

Rosebud

Design by Anna Johanna



A delicate hat decorated with beads and cables to give you that extra bling.

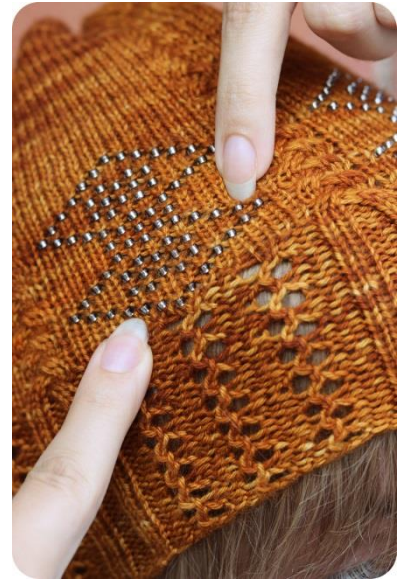
Yarn: Uncommon Thread Silky Merino Fingering, or any fingering weight yarn
(400 m/100 g)

Needles: 3.0 mm

Gauge: 6 sts x 9 rnds = 2 x 2 cm in st st

Other: 450 seed beads in size o/8 and a size 0.6 mm crochet hook for adding the beads

Size: S-M-L



You can find help for adding the beads for example here: <http://www.youtube.com/watch?v=t77pmmqCmr4>

Abbreviations

k	knit
p	purl
yo	yarn over
ssk	slip, slip, knit (slip 1 as if to knit, slip 1 as if to knit, slip the stitches back onto the left needle and k together tbl)
k2tog	k 2 together
C2R	right leaning cable (Slip next 2 sts on a cable needle and hold on back of work, k2, k2 from cable needle.)
C2L	left leaning cable (Slip next 2 sts on a cable needle and hold in front of work, k2, k2 from cable needle.)
szkp	slip 2 sts as if to knit them together, k1, pass the slipped sts over. 2 sts decreased.



CO 120 sts and join in the round. Knit repeating the 4 rounds of the rib chart until the piece measures 8 cm from the cast-on edge. Make sure to end after you have knitted round 1 or 3.

Size S, next round: *k2, p2, k8, ssk, k6*, repeat 5 more times.

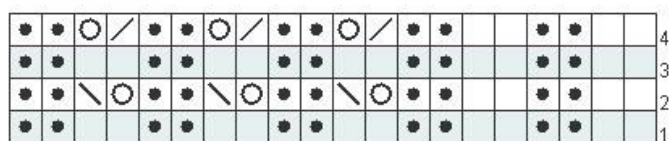
Size M, next round: *k2, p2, k9, m1, k7*, repeat 5 more times.

Size L, next round: *k2, p2, k5 [m1, k4] x2, m1, k3* repeat 5 more times.

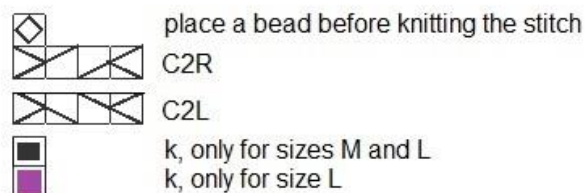
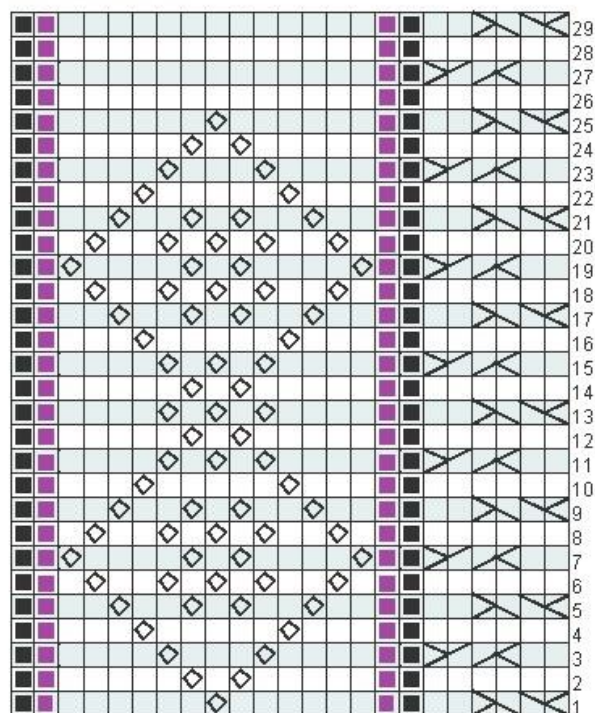
Start the bead chart. The beads are added one at a time according to the chart. Slip the crochet hook through the bead. Using the hook, take the stitch through the bead and place the stitch back on the left needle. After you have added all the beads, repeat rounds 26–29.

When the piece measures 24 cm from the cast-on edge, start the decrease chart of your chosen hat size. The decreases are worked between the cables. Continue the cables as you have done so far. Once you have completed the decrease chart, cut the yarn, leaving a 15 cm tail. Thread the yarn through the stitches twice and pull. Weave in the ends. Enjoy your new crown!

Rib chart



Bead chart



Decrease chart

