

SIZED TO
2X

Pine Meadow

DESIGN BY **SANDI PROSSER**

A play of colorwork and ribbing come together to create this autumnal buttoned cardigan.

1 2 3 4 5 6 INTERMEDIATE

Sizes

Woman's small (medium, large, X-large, 2X-large)

Instructions are given for smallest size, with larger sizes in parentheses. When only 1 number is given, it applies to all sizes.

Finished Measurements

Chest: 37½ (41, 44¾, 49, 53) inches, buttoned

Length: 19¾ (20¼, 20¾, 21¼, 21¾) inches

Materials

- Cascade Yarns Venezia Sport Solids and Multis (sport weight; 70% merino wool/30% mulberry silk; 307 yds/100g per hank): 5 (5, 6, 6, 7) hanks ginger #160 (MC) and 2 (2, 3, 3, 3) hanks garden #210 (CC)
- Size 5 (3.75mm) straight and 32-inch circular needles or size needed to obtain gauge
- Size F/5 (3.75mm) crochet hook for button loops
- Stitch markers
- Stitch holders or waste yarn
- 2 (1⅝-inch) buttons



**Designer's
TIP**

Stranded colorwork patterns look best when blocked.

To ensure a great finished product, be sure to use a natural fiber.

Gauge

27 sts and 28 rows = 4 inches/10cm in St st over Color Pat Chart.

To save time, take time to check gauge.

Special Abbreviation

Make 1 Purlwise (M1P): Insert LH needle from front to back under horizontal strand between last st worked and next st on LH needle; purl through back of resulting loop.

Pattern Stitch

2x2 Rib (multiple of 4 sts + 2)

Row 1 (RS): *K2, p2; rep from * to last 2 sts, k2.

Row 2: *P2, k2; rep from * to last 2 sts, p2.
Rep Rows 1 and 2 for pat.

Pattern Note

Work decreases as follows: K1, k2tog at beginning of right-side rows and ssk, k1 at end of row. P1, ssp at beginning of wrong-side rows and p2tog, p1 at end.

Back

With MC, cast on 134 (150, 162, 178, 194) sts.

Work in 2x2 Rib until back measures 4 inches, ending with a WS row.

Next row (RS): Continuing in pat, work 8 (7, 8, 9, 14) sts, *work 2 sts tog (k2tog if 2nd st is a knit st, p2tog if 2nd st is a purl st), work 12 (11, 12, 11, 10) sts; rep from * to end—125 (139, 151, 165, 179) sts.

Purl 1 row.

Work Color Pat Chart, beg and ending as indicated for your size.

Work even until back measures 12 inches, ending with a WS row.

Shape Armholes

Bind off 6 sts at beg of next 2 rows—113 (127, 139, 153, 167) sts.

Work even until armholes measure 7 (7½, 8, 8½, 9) inches, ending with a WS row.

Shape Shoulders

Bind off 10 (12, 14, 16, 17) sts at beg of next 2 rows, then 11 (13, 14, 16, 18) sts at beg of next 4 rows.

Place rem 49 (51, 55, 57, 61) sts on holder or waste yarn.

Left Front

With MC, cast on 59 (67, 73, 81, 89) sts.

Row 1 (RS): *K2, p2; rep from * to last 3 (3, 1, 1, 1) st(s), knit to end.

Row 2: P3 (3, 1, 1, 1), *k2, p2; rep from * to end.

Work even until left front measures 4 inches, ending with a WS row.

Next row (RS): Continuing in pat, work 12 (10, 7, 12, 9) sts, *work 2 sts tog (k2tog if 2nd st is a knit st, p2tog if 2nd st is a purl st), work 9 (7, 9, 9, 8) sts; rep from * to last 3 (3, 0, 3, 0) sts, knit to end—55 (61, 67, 75, 81) sts.

Purl 1 row.

Work Color Pat Chart, beg and ending as indicated for your size.

Work even until left front measures 12 inches, ending with a WS row.

Shape Armhole

Next row (RS): Bind off 6 sts, work to end—49 (55, 61, 69, 75) sts.

Work even until armhole measures 5 (5½, 6, 6½, 7) inches, ending with a RS row.

Shape Neck

Next row (WS): Bind off 9 (9, 10, 12, 13) sts, work to end—40 (46, 51, 57, 62) sts.

Dec 1 st at neck edge on next row, then [every row] 4 times, then [every RS row] 3 (3, 4, 4, 4) times—32 (38, 42, 48, 53) sts.

Work even until armhole measures 7 (7½, 8, 8½, 9) inches, ending with a WS row.

Shape Shoulder

Bind off 10 (12, 14, 16, 17) sts at armhole edge once, then 11 (13, 14, 16, 18) sts twice.

Right Front

With MC, cast on 59 (67, 73, 81, 89) sts.

Row 1 (RS): K3 (3, 1, 1, 1), *p2, k2; rep from * to end.

Row 2: *P2, k2; rep from * to last 3 (3, 1, 1, 1) st(s), purl to end.

Work even until right front measures 4 inches, ending with a WS row.



Next row (RS): Continuing in pat, work 12 (10, 7, 12, 9) sts, *work 2 sts tog (k2tog if 2nd st is a knit st, p2tog if 2nd st is a purl st), work 9 (7, 9, 9, 8) sts; rep from * to last 3 (3, 0, 3, 0) sts, knit to end—55 (61, 67, 75, 81) sts.

Purl 1 row.

Work Color Pat Chart, beg and ending as indicated for your size.

Work even until right front measures 12 inches, ending with a RS row.

Shape Armhole

Next row (WS): Bind off 6 sts, work to end—49 (55, 61, 69, 75) sts.

Work even until armhole measures 5 (5½, 6, 6½, 7) inches, ending with a WS row.

Shape Neck

Next row (RS): Bind off 9 (9, 10, 12, 13) sts, work to end—40 (46, 51, 57, 62) sts.

Work 1 row even.

Dec 1 st at neck edge on next 5 rows, then [every RS row] 3 (3, 4, 4, 4) times—32 (38, 42, 48, 53) sts.

Work even until armhole measures 7 (7½, 8, 8½, 9) inches, ending with a RS row.

Shape Shoulder

Bind off 10 (12, 14, 16, 17) sts at armhole edge once, then 11 (13, 14, 16, 18) sts twice.

Sleeves

With MC, cast on 98 (106, 114, 122, 130) sts.

Work in 2x2 Rib until piece measures 4 inches, ending with a RS row.

Next row (WS): Continuing in pat, work 4 (4, 5, 3, 4) sts, *work 2 sts tog (k2tog if 2nd st is a knit st, p2tog if 2nd st is a purl st), work 20 (22, 15, 17, 13) sts; rep from * to last 6 (6, 7, 5, 6) sts, work 2 sts tog, work to end—93 (101, 107, 115, 121) sts.

Work Sleeve Color Pat Chart, beg and ending as indicated for your size.

Work even until sleeve measures 11 (11½, 11½, 12½, 12½) inches, ending with a RS row. Place markers at beg and end of row.

Work 7 rows even.

Shape Cap

Bind off 7 (7, 8, 9, 9) sts at beg of next 10 rows.

Bind off rem 23 (31, 27, 25, 31) sts.

Finishing

Block pieces to measurements. Sew shoulder seams.

Left Front Band

With RS facing, with circular needle and MC, and beg at neck edge, pick up and knit 132 (136, 140, 144, 148) sts along left front edge.

Row 1 (WS): Sl 1 kwise wyib, *p2, k2; rep from * to last 3 sts, p3.

Row 2: K3, *p2, k2; rep from * to last st, k1.

Work even until band measures 2½ inches, ending with a WS row.

Bind off all sts in pat.

Right Front Band

Mark position of 2 buttons on right front, the first 2 inches below beg of neck shaping and the last 5 inches below the first.

With RS facing, circular needle and MC, and beg at lower right front edge, pick up and knit 132 (136, 140, 144, 148) sts along right front edge.

Row 1 (WS): P3, *k2, p2; rep from * to last st, p1.

Row 2: Sl 1 pwise wyif, *k2, p2; rep from * to last 3 sts, k3.

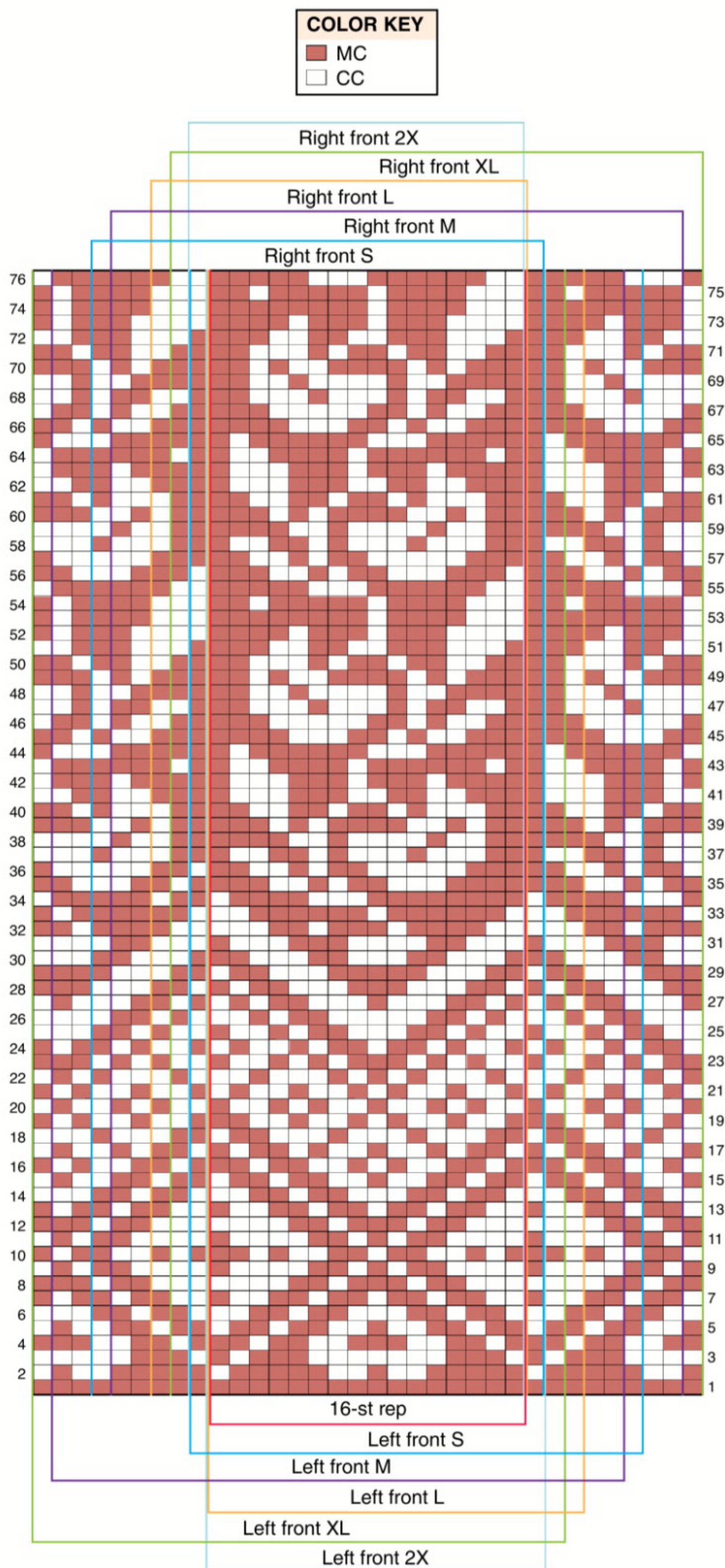
Work even until band measures 2½ inches, ending with a WS row.

Note: If not familiar with chain st (ch), refer to Crochet Class on page 112.

Bind-off row (RS): Bind off in pat to first button marker, place st from RH needle onto crochet hook and ch 11, place loop back onto RH needle and bind off in pat to next marker, place st from RH needle onto crochet hook and ch 11, place loop back onto RH needle and bind off rem sts.

Collar

With RS facing, with circular needle and MC, and beg at right front band, pick up and knit 21 sts along top of right front band, 31 (31, 33, 34, 35) sts along right front neck edge to shoulder, knit across 49 (51, 55, 57, 61) sts from back neck holder and inc 0 (1, 1, 0, 0) st(s)



LEFT & RIGHT FRONT COLOR PAT CHART

Note: Starting at Row 1, beg knitting at color line for size being worked and end at 2nd color line after 16-st rep.

at center back neck, pick up and knit 31 (31, 33, 34, 35) sts along left front neck edge, then 21 sts along top edge of left front band—153 (156, 164, 167, 173) sts.

Row 1 (WS): Sl 1 pwise wyif, [k2, p2] 13 (13, 14, 14, 14) times, k2, p1, [k2, p1] 14 (15, 15, 16, 18) times, k2, [p2, k2] 13 (13, 14, 14, 14) times, p1.

Row 2: Sl 1 kwise wyib, [p2, k2] 13 (13, 14, 14, 14) times, p2, [k1, p2] 14 (15, 15, 16, 18) times, k1, p2, [k2, p2] 13 (13, 14, 14, 14) times, k1.

Work even until collar measures 2¼ inches, ending with a WS row.

Inc row (RS): Sl 1 pwise wyif, [k2, p2] 13 (13, 14, 14, 14) times, k2, p1, M1P, [k2, p1, M1P] 14 (15, 15, 16, 18) times, k2, [p2, k2] 13 (13, 14, 14, 14) times, p1—168 (172, 180, 184, 192) sts.

Next row: Sl 1 kwise wyib, *p2, k2; rep from * to last 3 sts, p2, k1.

Next row: Sl 1 pwise wyif, *k2, p2; rep from * to last 3 sts, k2, p1.

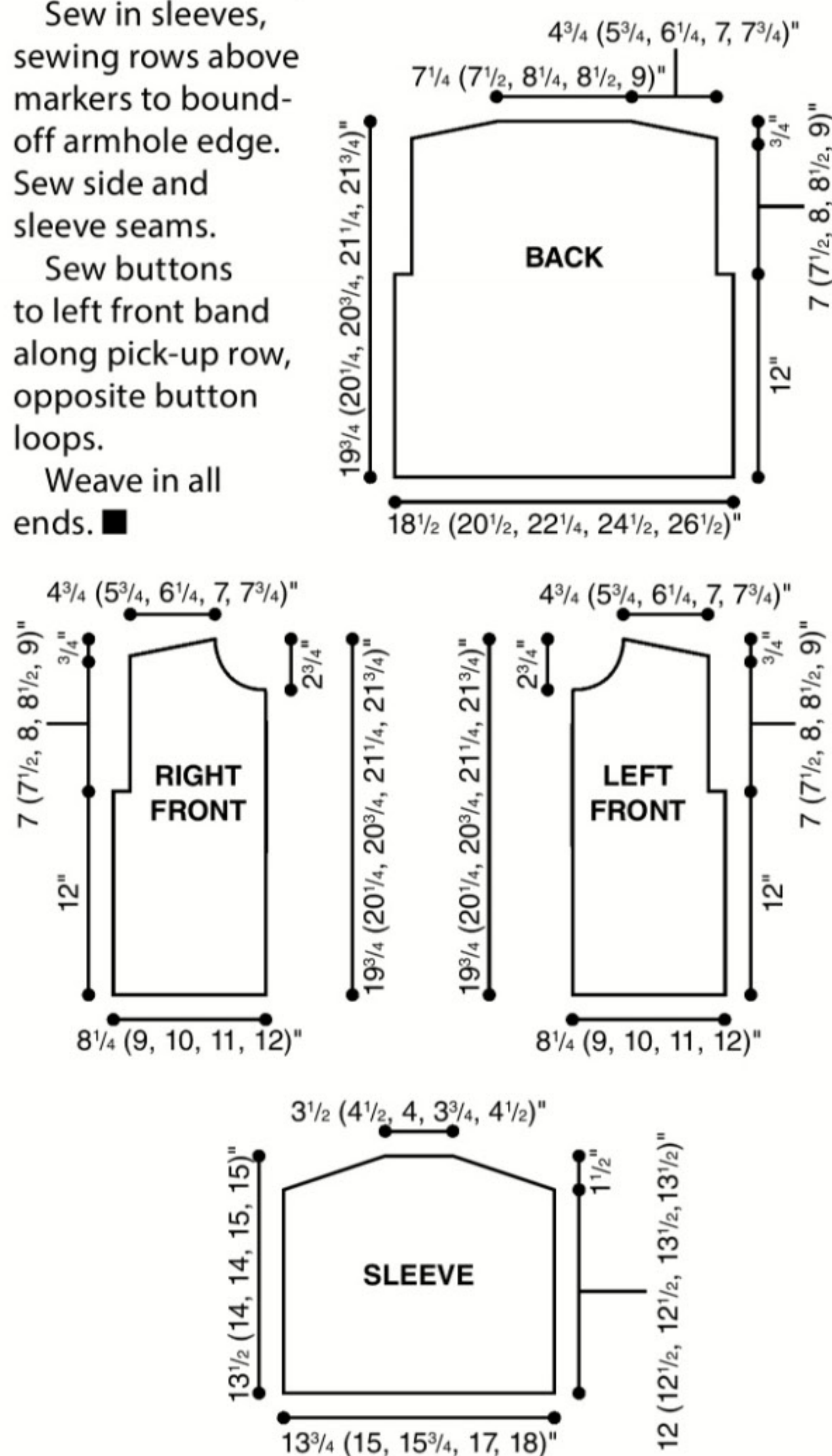
Work even until collar measures 5 inches, ending with a WS row.

Bind off all sts in pat.

Sew in sleeves, sewing rows above markers to bound-off armhole edge. Sew side and sleeve seams.

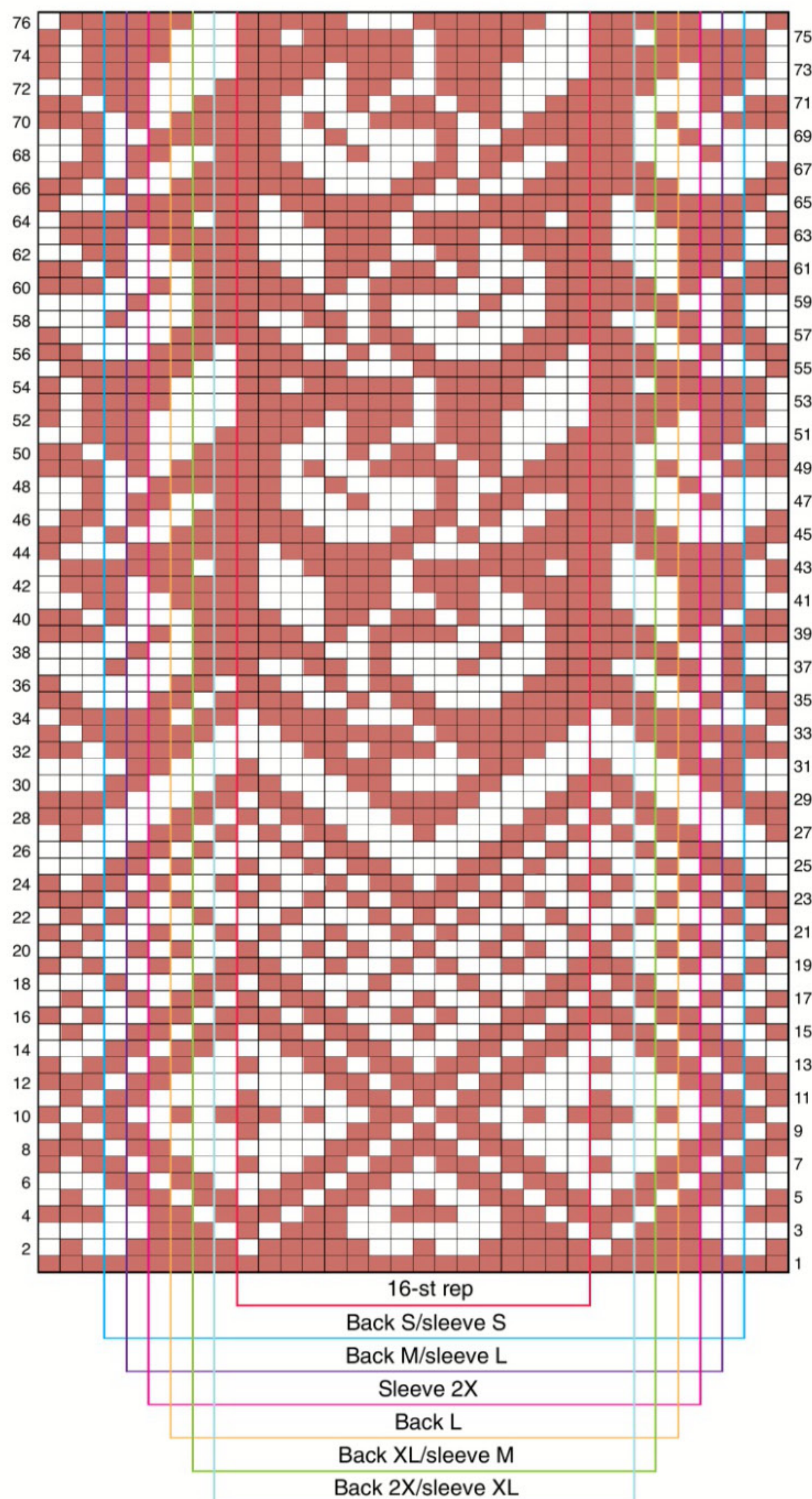
Sew buttons to left front band along pick-up row, opposite button loops.

Weave in all ends. ■



COLOR KEY

MC
CC



BACK & SLEEVE COLOR PAT CHART

Note: Starting at Row 1, beg knitting at color line for size being worked and end at 2nd color line after 16-st rep.