



COLOR THEORY: STRANDED
COLORWORK & FAIR ISLE

Phoenix VEST

Design by **SANDI PROSSER**

Show off the beautiful wrong side of this stranded colorwork masterpiece by allowing the front lapels to drape open.

1 2 3 4 **5** 6 MODERATELY CHALLENGING

Sizes

Woman's small (medium, large, X-large, 2X-large)

Instructions are given for smallest size, with larger sizes in parentheses. When only 1 number is given, it applies to all sizes.

Finished Measurements

Width: Approx 44 (48, 51, 53, 55) inches (including edgings)

Length: 30 (30, 31, 31, 32) inches (including edgings)

Materials

- Plymouth Yarn DK Merino Superwash (DK weight; 100% superwash merino wool; 130 yds/50g per skein): 7 (8, 8, 9, 9) skeins black #1050 (A)
- Plymouth Yarn Johanne (DK weight; 40% wool/30% mohair/30% acrylic; 327 yds/100g per skein) 3 skeins teaberry #0013 (B)
- Size 4 (3.5mm) 16- and 32-inch circular needles
- Size 6 (4mm) 32-inch circular needle or size needed to obtain gauge
- Spare circular needles for holders
- Stitch marker



Gauge

24 sts and 27 rows = 4 inches/10cm in 2-color stranded St st with larger needle, blocked.

To save time, take time to check gauge.

Special Abbreviation

Make 1 (M1): Insert LH needle from front to back under horizontal strand between last st worked and next st on LH needle; knit through back of resulting loop.

Pattern Stitches

Refer to charts provided to work Colorwork pats for left and right halves.

Pattern Notes

Pattern is worked back and forth in rows. A circular needle is used to accommodate the large number of stitches. Do not join.



Vest is worked in 2 pieces from the bottom up; the seam is at center back. Work edge stitches in garter stitch. For a neater top edge, top edging is worked after both pieces are completed.

Left Half

With smaller 32-inch circular needle and A, cast on 128 (142, 149, 156, 163) sts. Do not join.

Knit 6 rows, ending with a WS row. Change to larger needle.

Set-up row (RS): K1 (edge st), work charted 7-st Left Half Colorwork pat to last st, k1 (edge st).

Maintaining edge sts in garter st, work even until piece measures 15 inches, ending with a WS row.

Division row (RS): Work 41 (46, 49, 50, 52) sts, then transfer them to a spare circular needle for left back; bind off 6 sts for underarm, work to end of row—81 (90, 94, 100, 105) left front sts rem.

Left Front

Shape Armhole

Working edge sts in garter st, work 13 rows even.

Inc row (RS): K1, work in pat to last st, M1, k1—1 st inc.

Working new sts into established Colorwork pat, rep Inc row [every 14 rows] twice—84 (93, 97, 103, 108) sts.

Work even until armhole measures 8 (8, 9, 9, 10) inches, ending with a WS row.

Cut yarn and transfer sts to spare circular needle. Cut A and B.

Left Back

Using larger needle and A and B, work next WS pat row across left back sts on spare needle.

Working edge sts in garter st, work 12 rows even.

Inc row (RS): K1, M1, work in pat to last st, k1—1 st inc.

Working new sts into established Colorwork pat, rep Inc row [every 14 rows] twice—44 (49, 52, 53, 55) sts.

Work even until armhole measures same as for left front, ending with same pat row.

Joining row (RS): Work in established pat across left back sts and then across left front sts on spare needle—128 (142, 149, 156, 163) sts.

Work even until piece measures 6½ inches from Joining row, ending with a WS row.

Transfer all sts to spare circular needle. Cut A and B.

Right Half

Work as for left half to armhole, but work Right Half Colorwork pat.

Division row (RS): Work 81 (90, 94, 100, 105) sts, then transfer them to a spare circular needle for right front; bind off 6 sts for underarm, work to end of row—41 (46, 49, 50, 52) right back sts rem.

Right Back

Work as for left front—44 (49, 52, 53, 55) sts after armhole shaping is complete.

Right Front

Work as for left back—84 (93, 97, 103, 108) sts after armhole shaping is complete.

Complete right half as for left, but leave sts on working needle; cut B, but not A.

Finishing

Sew center back seam.

Top Edging

Joining row (RS): Using smaller 32-inch needle and A, knit across right half sts and then across left half sts on spare needle; do not join—256 (284, 298, 312, 326) sts.

Knit 6 rows.

Loosely bind off all sts kwise.

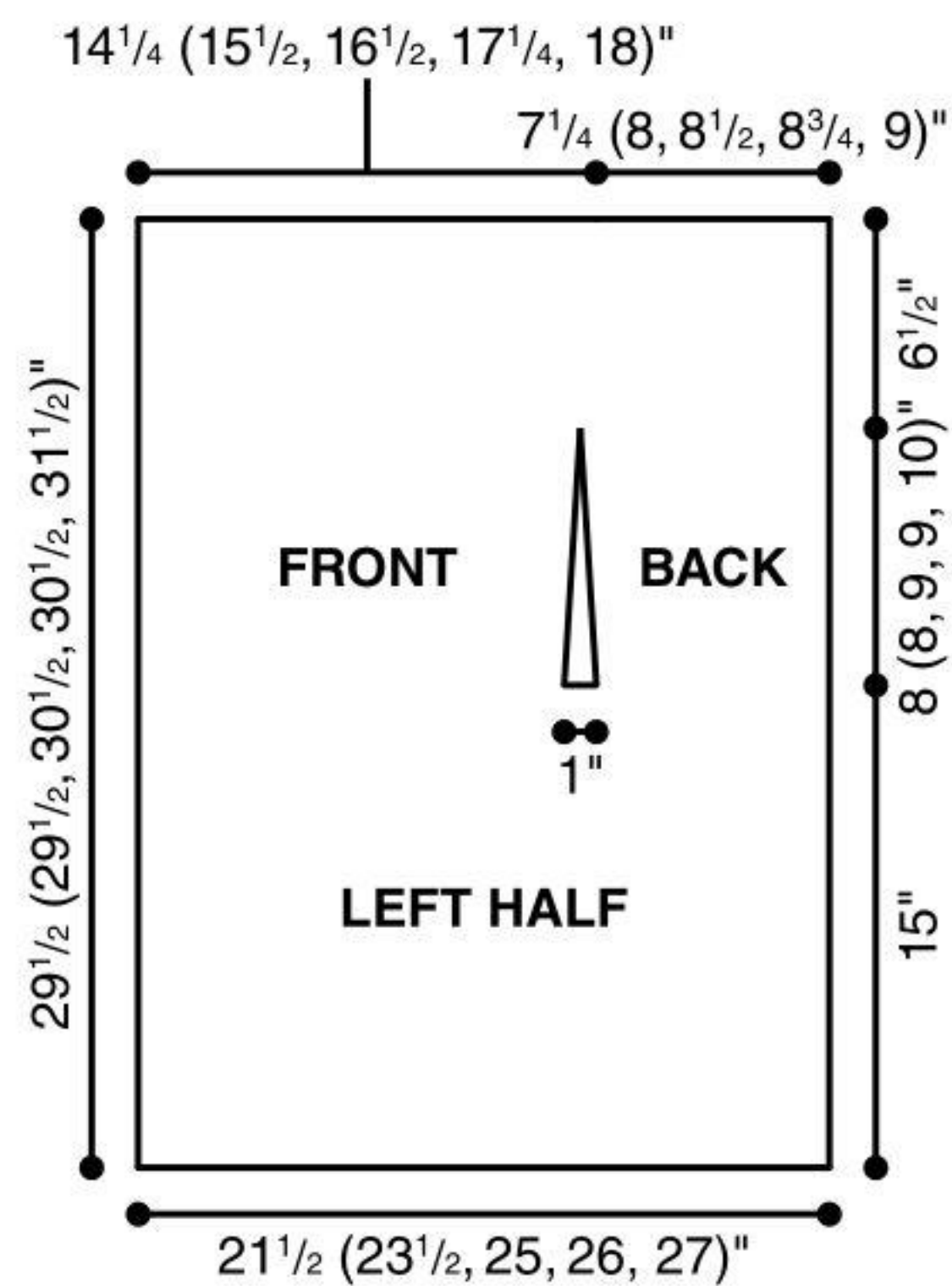


Left Front Edging

With RS facing and using smaller 32-inch needle and A, pick up and knit 180 (180, 186, 186, 192) sts evenly along left front edge; do not join.

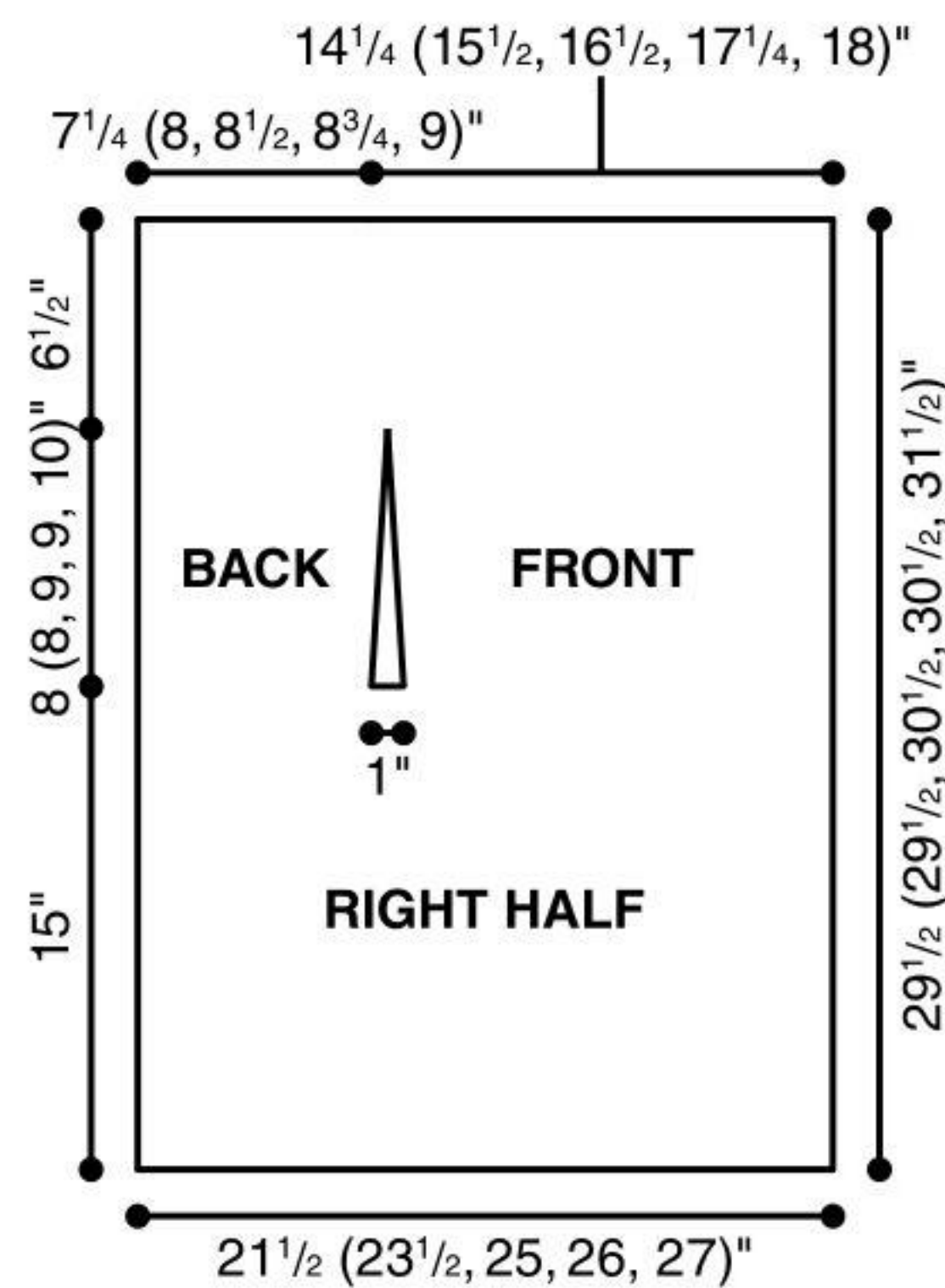
Knit 6 rows.

Loosely bind off all sts kwise.



Right Front Edging

With RS facing and using smaller 32-inch needle and A, pick up and knit 180 (180, 186, 186, 192) sts evenly along right front edge. Loosely bind off all sts kwise.



Armhole Edging

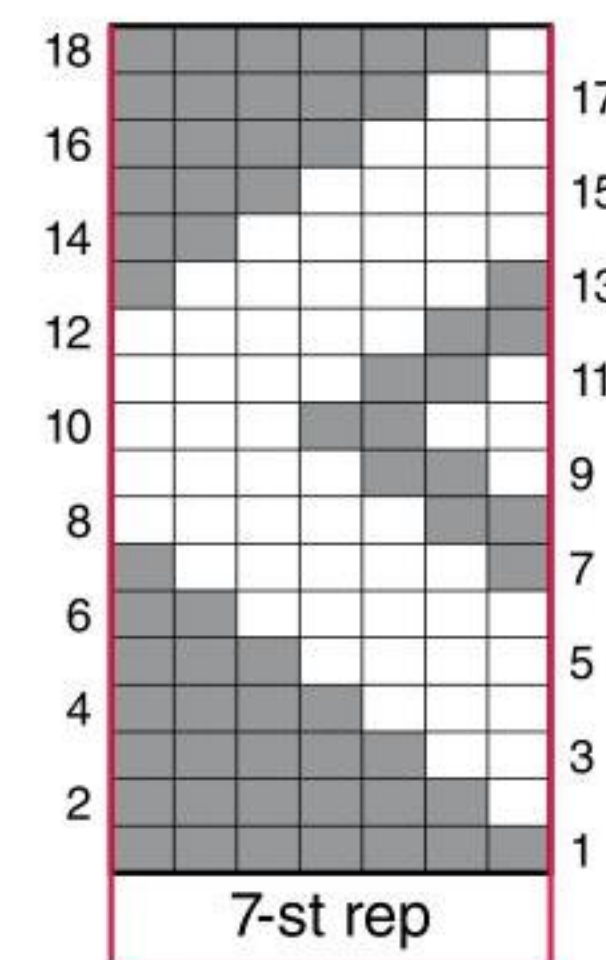
With RS facing and using smaller 16-inch needle and A, pick up and knit 134 (134, 146, 146, 152) sts evenly around armhole opening; pm for beg of rnd and join.

[Purl 1 rnd, knit 1 rnd] twice.

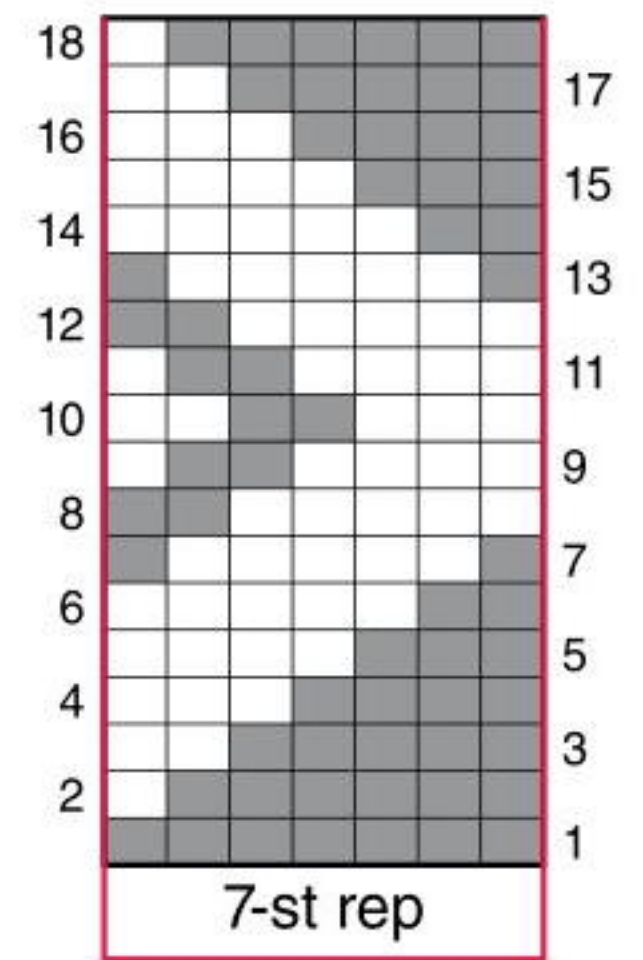
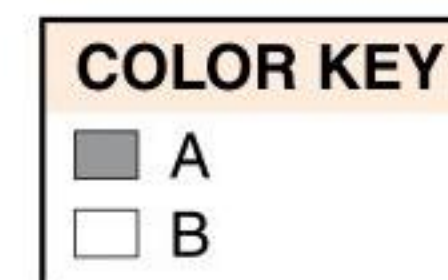
Loosely bind off all sts pwise.

Weave in all ends.

Block to measurements. ●



LEFT HALF
COLORWORK
CHART



RIGHT HALF
COLORWORK
CHART