

# PACIFIC KNIT CO.

## Arctic Doodle Cowl Infinity

ADVENTUROUS BEGINNER



**THE ARCTIC DOODLE INFINITY COWL** This pattern is worked in the round as a tube, from side to side. Beginning with a provisional cast on, the design-your-own stranded colorwork is then knit to desired finished circumference. Then the two ends are grafted together for a seamless infinity cowl, with or without a twist.

This is a [Doodle Series Pattern](#), which means it includes micro charts intended to be used as mix-and-match colorwork motifs throughout the project. This “arctic doodle” is inspired by snowbound arctic animals in a winter wonderland! Or you can substitute ANY other Doodle charts!

*Jamie, Pacific Knit Co.*

## SIZE(S)

Adult Small (Medium, Large)\*

*\*Available in standard or twisted orientation.*

## MEASUREMENTS

- Height: 10 in [25 cm]
- Circumference: 22 (26, 30) in [56 (66, 76) cm]

## YARN

Any DK, light worsted, or sport weight yarn.

Sample uses [Moonglow Yarn Co.](#) Merino DK base, 100% Superwash Merino, 100 g skeins, 231 yards [211 m]; Colors: Arctic Doodle Kit

Yardage listed in total yards per size due to the customizable nature of this pattern.

- 650 (750, 860) yards [595 (685, 785) meters]
- Approx. (2) 100g skeins main color and (5-6) 20g skeins accent colors

## NEEDLES

US 5/3.75 mm or size needed to obtain gauge  
24 in [60 cm] circular needles

## GAUGE

24 sts and 24 rounds per 4 in [10 cm] in colorwork

## NOTIONS

5 stitch markers (one in different color)  
Spare circular needle for grafting of same size or smaller  
Waste yarn and crochet hook for provisional cast on  
Scissors & Tapestry needle

## ABBREVIATIONS

BOR	Beginning of Round
CC	Contrast Color, or “accent color”
MC	Main Color, or “background color”
ST(S)	Stitches

## GENERAL NOTES

**Special techniques** include stranded colorwork in the round, provisional cast on, and grafting.

The sample is a size medium. The design changes MC/CC with each chart, and has been seamed without a twist.

Check out [#ArcticDoodleCowl](#) for more inspiration!

**24 Doodle Motifs** included are polar bears, penguins, walrus, narwhal, ice bergs, snow-covered trees, snowflakes, and more!

### Charts are provided in both Standard and Inverted.

Select the chart based on the contrast between your chosen yarns, as listed below.

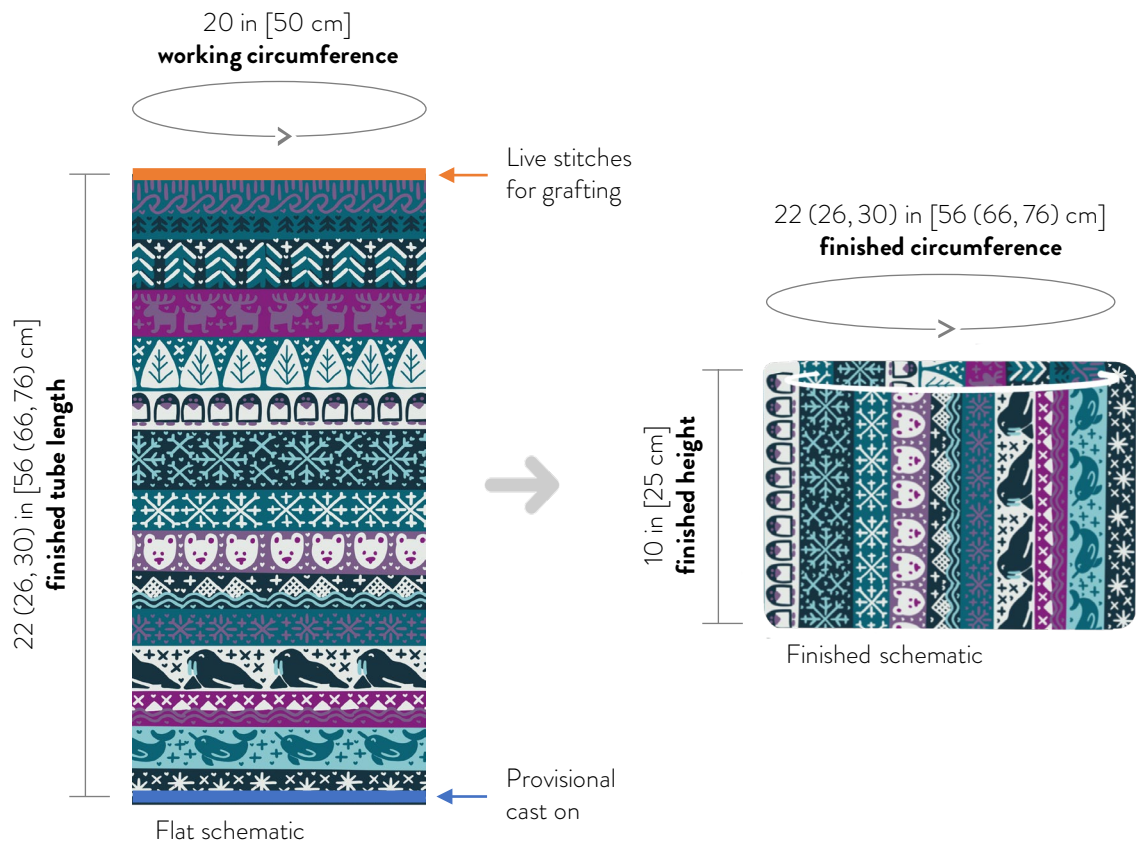
- Standard works well with a darker MC
- Inverted works well with a lighter MC

This pattern is uniquely designed to use up scrap yarn, leftovers, yarn advents, or any other small batches of colorways in your stash. The yarn used is a suggestion from the Designer. Alternative yarns are encouraged.

The majority of these charts are designed to require little need to catch floats. Weave in your ends as you go using [this](#) method.

## ADDITIONAL SUPPORT INFORMATION

- See [How to Doodle With Yarn](#) (pg. 6) for more information on the art of “doodle” patterns, [Pre-made Doodle Charts](#) (pg. 7) to re-create the sample, and [My Doodle Chart](#) (pg. 8) for a blank master chart.
- See [Blank Doodle Charts](#) (pg. 15) to create your own.
- See [Special Techniques](#) (pg. 3) for video links to any non-standard techniques used in this pattern, as well as links to general colorwork knitting tips.
- See [Modifications](#) (pg. 4) for more information about additional customizations, including adjusting width, height, yarn weights, and/or ribbing options.
- See [Finishing Instructions](#) (pg. 16) and [Grafting Diagrams](#) (pg. 17) for more detailed information, including photos and diagrams, on these techniques.



## PROVISIONAL CAST ON

This method uses waste yarn to hold cast on stitches until we are ready to graft the edges together.

Provisional Cast on – Crochet Chain (Purl Soho):  
<https://www.purlsoho.com/create/provisional-cast-on-video/>

## GRAFTING / SEAMING

This stitch allows for the grafting of a cast on edge to the live edge, so that the finished item can be joined seamlessly in the round.

How to Graft an Infinity Cowl (Pacific Knit Co.):  
[https://www.instagram.com/reel/CrO5KHWvbpz/?utm\\_source=ig\\_web\\_copy\\_link](https://www.instagram.com/reel/CrO5KHWvbpz/?utm_source=ig_web_copy_link)

Kitchener Stitch (Purl Soho):  
<https://www.youtube.com/watch?v=-nIWKvrGp-4>

## COLORWORK TIPS & TRICKS

Catching MC Floats (Pacific Knit Co.):  
[https://www.instagram.com/reel/CWfLBU7tFLd/?utm\\_source=ig\\_web\\_copy\\_link](https://www.instagram.com/reel/CWfLBU7tFLd/?utm_source=ig_web_copy_link)

Catching CC Floats (Pacific Knit Co.):  
[https://www.instagram.com/reel/CW9Z5ZPJpQO/?utm\\_source=ig\\_web\\_copy\\_link](https://www.instagram.com/reel/CW9Z5ZPJpQO/?utm_source=ig_web_copy_link)

Weaving in Ends as you Go (Pacific Knit Co.):  
[https://www.instagram.com/reel/Ce2j60mJrK4/?utm\\_source=ig\\_web\\_copy\\_link](https://www.instagram.com/reel/Ce2j60mJrK4/?utm_source=ig_web_copy_link)

Arranging Your Doodle Charts (Pacific Knit Co.):  
[https://www.instagram.com/reel/CnZ199Fpzhh/?utm\\_source=ig\\_web\\_copy\\_link](https://www.instagram.com/reel/CnZ199Fpzhh/?utm_source=ig_web_copy_link)

Blog: How to Doodle with Yarn (Pacific Knit Co.):  
<https://www.pacificknitco.com/post/how-to-doodle-with-yarn>



Modifications will affect the estimated yardage.

ADJUSTING THE HEIGHT

The height of the infinity cowl is determined by the working circumference, as the finished cowl will be turned on its side once grafted together.

Because the cowl is double thick, the finished height equates to half of the working circumference.

To adjust the working circumference, cast on for **more or less repeats of 24 sts.**

Based on your gauge, use the following formula:

(Cast on # of stitches ÷ gauge)  
= working circumference

(Working circumference ÷ 2) = finished height

Example for DK:

(120 sts ÷ 6 sts/in) = 20 in working circumference  
= 10 in finished height

**Taller:** (144 sts ÷ 6 sts/in) = 24 in → 12 in height  
- or -

**Shorter:** (96 sts ÷ 6 sts/in) = 16 in → 8 in height

Work remaining pattern as written after casting on your new number of stitches.

ADJUSTING THE CIRCUMFERENCE

While written for three sizes (circumferences), the infinity cowl is flexible to any finished circumference.

To adjust the finished circumference, cast on as written, and simply continue working main colorwork charts until reaching the the desired finished circumference.

Double Length Infinity Cowl

To make a double length infinity cowl (i.e. wraps twice around your neck), work the colorwork section twice as long as listed for the desired size. Note that this will also double the recommended yardage per size.

ALTERNATIVE YARN WEIGHTS

While this pattern is written for DK weight yarn, I encourage you to adapt it for alternative yarn weights!

Based on your gauge with selected yarn, determine your desired working height, similar to the “Adjusting the Height” instructions, and cast on a **multiple of 24 sts** that is closest to your gauge.

(Cast on # of stitches ÷ gauge)  
= working circumference

(Working circumference ÷ 2) = finished height

Example for Fingering Weight (7 sts/in):

24 st chart x 6 repeats = 144 sts cast on  
144 sts ÷ 7 sts/in = 20.5 in circumference  
20.5 in ÷ 2 = 10.25 finished height

Example for Worsted Weight (5 sts/in):

24 sts x 4 repeats = 96 sts cast on  
96 sts ÷ 5 = 19.2 in circumference  
19.2 ÷ 2 = 9.6 in finished height

Work remaining pattern as written after casting on your new number of stitches.

YARN WEIGHT SUBSTITUTION CHART

Use the following chart for quick calculations based on your desired gauge and height.

Note that alternative yarn weight options will result in changes to the estimated total yardage for the project.

Gauge per Inch	Number of Cast on sts	Approx. Finished Height
5	96 sts	9.6 in [24 cm]
5.5	120 sts	10.9 in [27.5 cm]
6	120 sts	10 in [25 cm]
6.5	144 sts	11 cm [28 cm]
7	144 sts	10.25 in [26 cm]

## CAST ON

Using main color (MC), provisionally cast on 120 sts, with scrap yarn and crochet hook ([Special Techniques](#) pg. 3), or preferred method. Join to work in the round being careful not to twist sts. Place marker for BOR.

Knit 1 round in MC, placing markers every 24 sts.

## MAIN DOODLE COLORWORK

*NOTE: Join new MC/CC colors at the beginning of each new chart, and break them when the chart is completed or carry up the inside, if desired. Weave in ends as you go.*

Select your first colorwork Doodle chart, choosing either Standard or Inverted based on your color contrast, and work the chart, repeating it around the working circumference and slipping markers as you come to them. After completing the first chart, work the next selected chart in the same manner.

Continue working colorwork charts until the tube of the cowl measures approx. 22 (26, 30) in [56 (66, 76) cm], or approximately 132, 156, 180 rounds, or desired length (i.e. finished circumference).

*NOTE: To make a double length infinity cowl, work this section twice as long as listed for your desired size.*

Break all yarns, except yarn to use for grafting. Break yarn for grafting with approx. 5x the working circumference of live stitches.

## FINISHING

See [Finishing Instructions](#) (pg. 16) and [Grafting Diagrams](#) (pg. 17) for detailed information & photos.

Place live sts on waste yarn and block to [flat schematic](#) (pg. 3). Weave in all ends prior to grafting ends together.

After blocking, place live sts on working needle. Remove provisional cast on and place cast on sts on spare needle. Arrange cowl like a “donut,” aligning cast on sts and live sts, with both working needles held parallel in left hand.

Place yarn tail on tapestry needle and graft the two ends of the cowl together using preferred method. Weave in any remaining ends.



See [How to Doodle with Yarn](#) (pg. 6) for more information about selecting and working Doodle charts.



Your unique “doodle” pattern is created by combining micro charts together in different arrangements.

**All of the charts work together**, so get creative with how to use them. Use some or all of the charts, repeat the same chart, or try different color combinations.

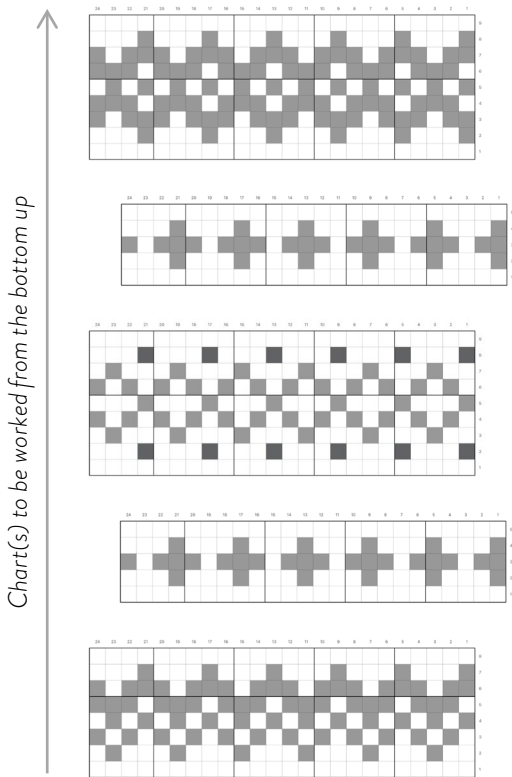
Any charts within the [Doodle Pattern Series](#) also work with this pattern, including chart expansion packs!

**Shift the charts as necessary** (see example) to align each consecutive chart as desired. Some Doodle patterns work well with motifs offset from the previous one.

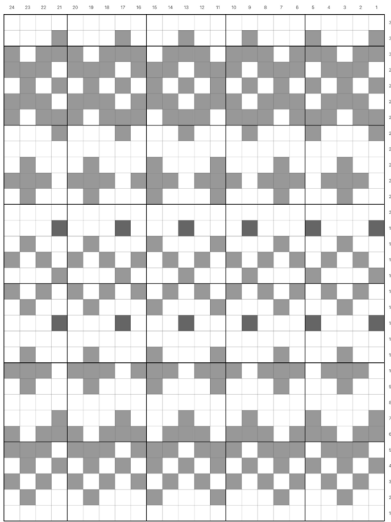
Knit this pattern again and again, because every time it will be something completely different!

SEQUENCING CHARTS

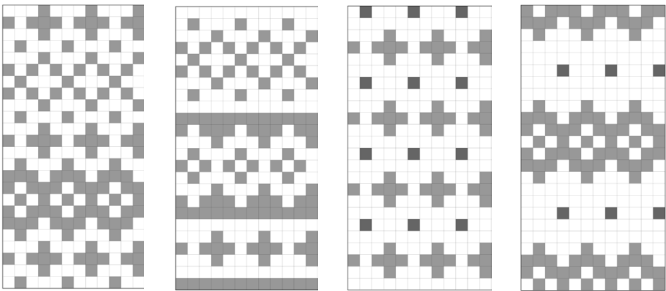
Individual charts in sequence



Assembled charts read as “one colorwork chart”



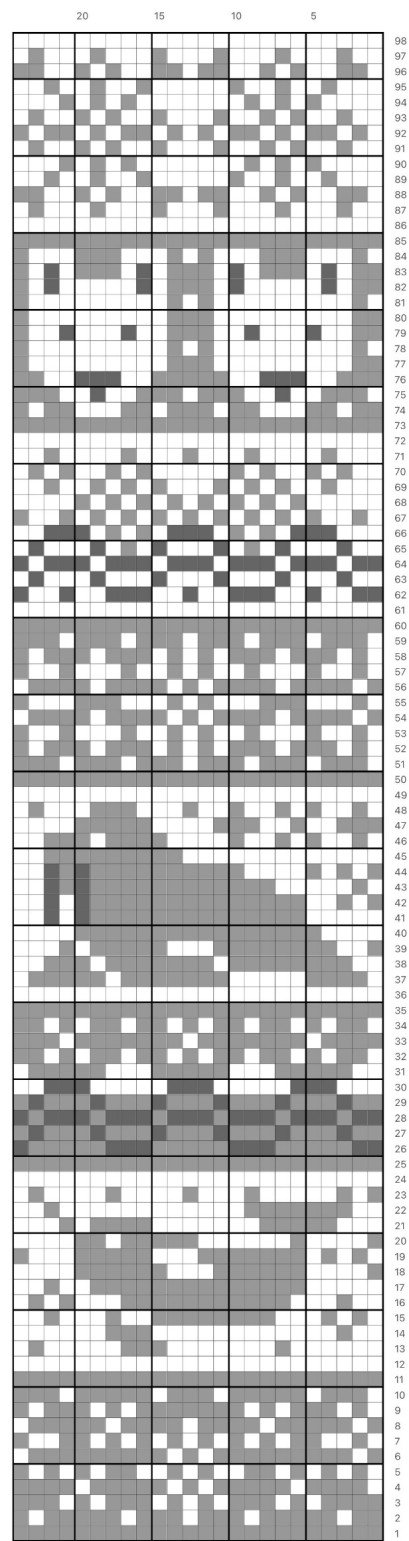
Variations on Patterns



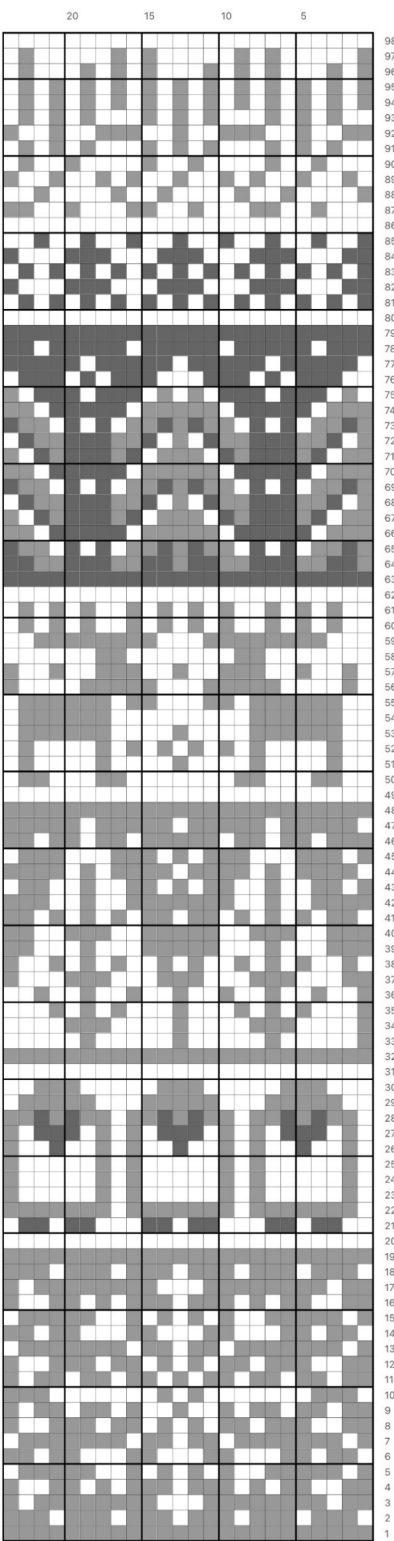
TIPS FOR DOODLES:

- If helpful, print and cut out charts to rearrange, draw your charts on graph paper or [My Doodle Chart](#) (pg. 8), or check out the Doodle Card Deck options on [www.pacificknitco.com](http://www.pacificknitco.com)
- Try using a single main color and/or single contrast color throughout for a minimalist look, or create the a stash buster by changing yarns with every chart repeat
- Use the Black and White filter on your phone to ensure your color choices have enough contrast
- Alternate dark and light in the MC and/or CC in consecutive charts for visual balance
- Always hold the CC dominant for each chart

Don't know where to start? You can simply work your Doodle like the sample knit and follow the pre-made chart below!






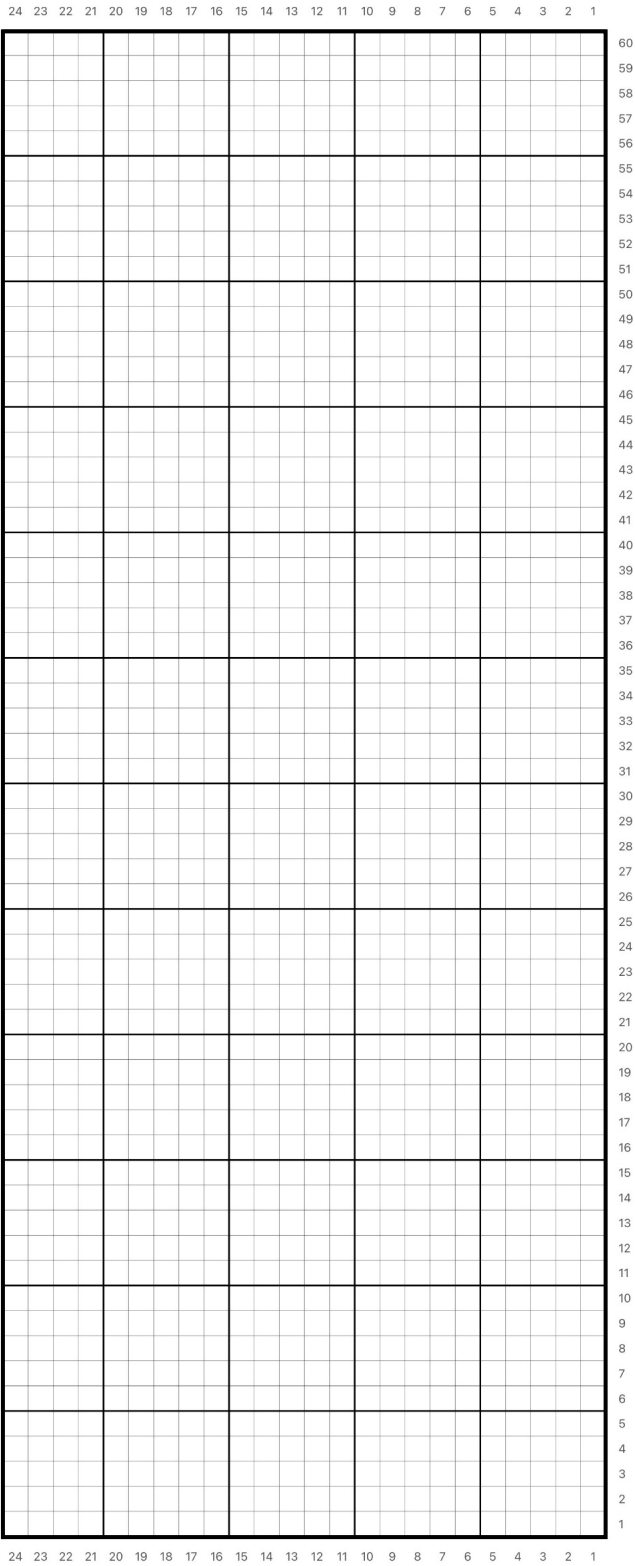
Sample Chart 1



Sample Chart 2

Chart Key

-  Knit in **dark**er color
-  Knit in **light**er color
-  Knit in **accent** color



Are you ready to start designing your own chart?

This blank master chart enables you to **re-draw all of your selected Doodle charts in order** and with your preferred contrast/colors!

**PRO TIP: Print and cut out your Doodle Charts and re-arrange on this master chart – they are the same scale so they work together!**

Follow the guidelines on [How to Doodle with Yarn](#) (pg. 6). Remember, you can shift charts left or right, if necessary, add or eliminate MC rounds between charts, repeat charts, or even design your own motifs!

This **chart is set up for 60 rounds of colorwork**, or approx. 10 in [25 cm] height with gauge at 6 sts x 6 rounds per 1 in [2.5 cm]. Create as many charts as necessary to reach desired finished height.

Use your actual palette colors in **My Chart Key** below to better visualize your final design.

My Chart Key

☐

\_\_\_\_\_

☐

\_\_\_\_\_

☐

\_\_\_\_\_

☐

\_\_\_\_\_

☐

\_\_\_\_\_

☐

\_\_\_\_\_

☐

\_\_\_\_\_

☐

\_\_\_\_\_

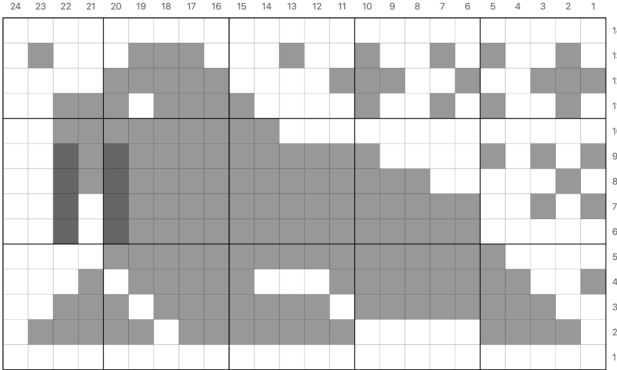
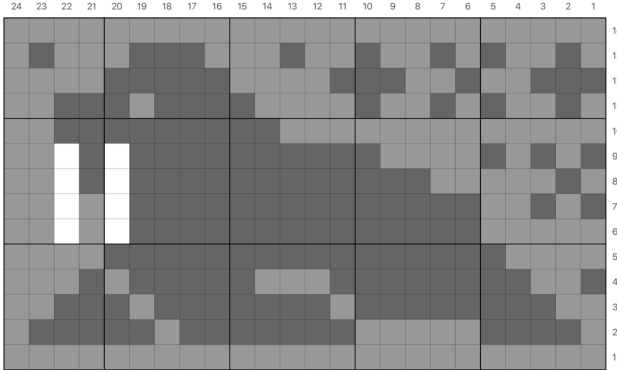
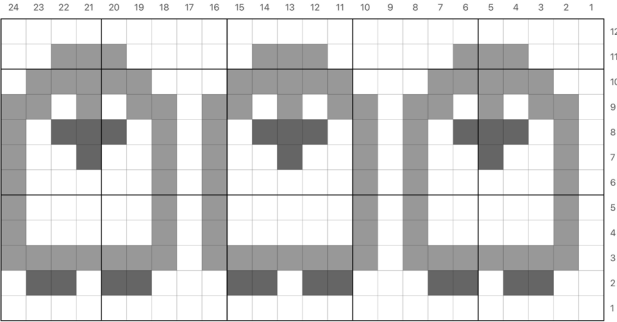
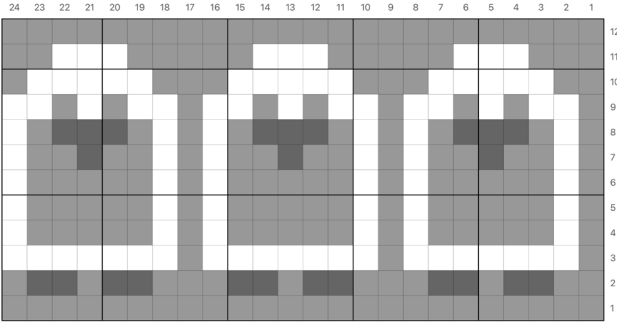
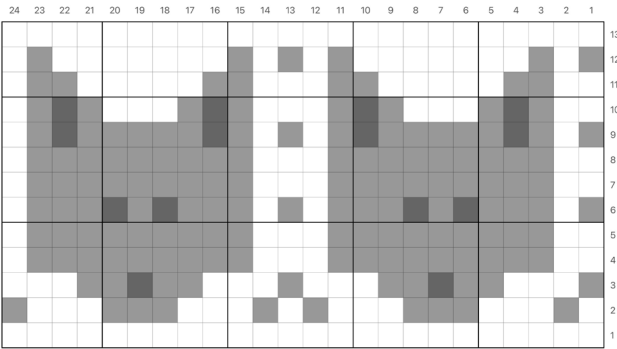
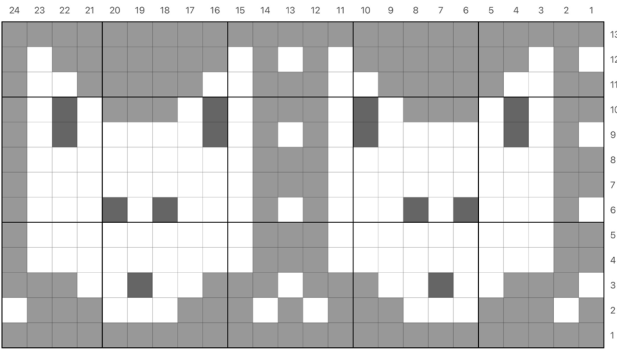
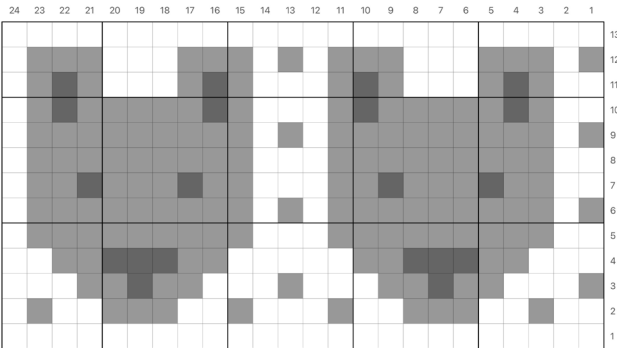
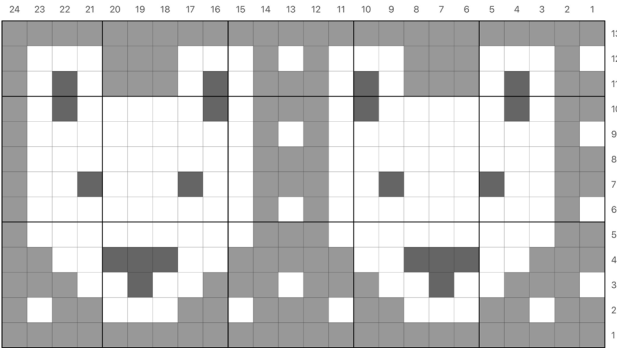
☐

\_\_\_\_\_



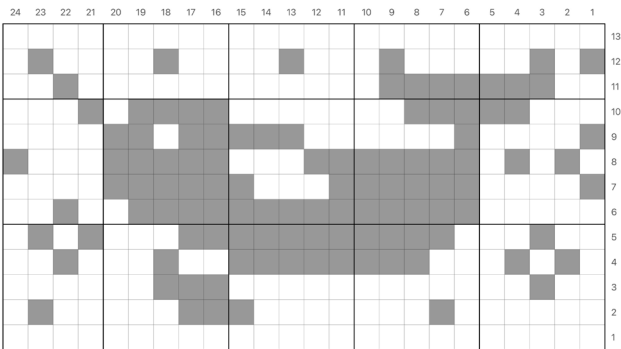
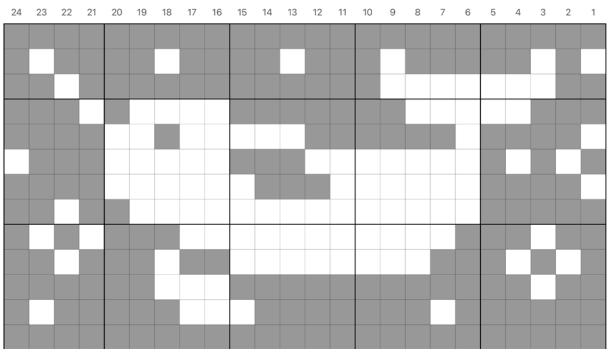
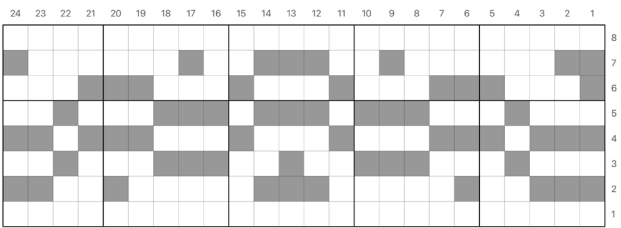
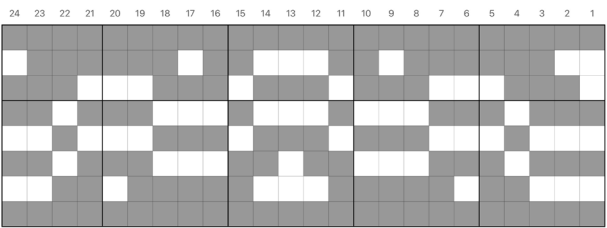
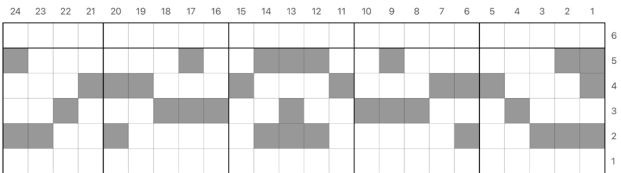
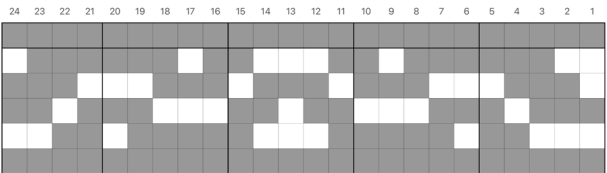
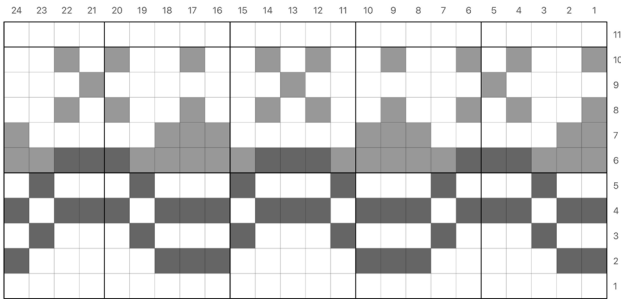
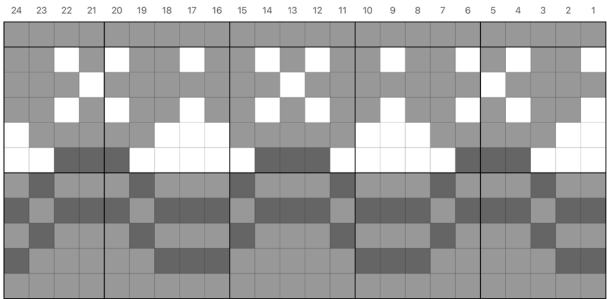
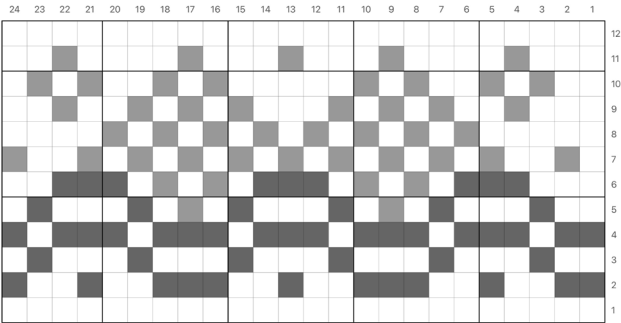
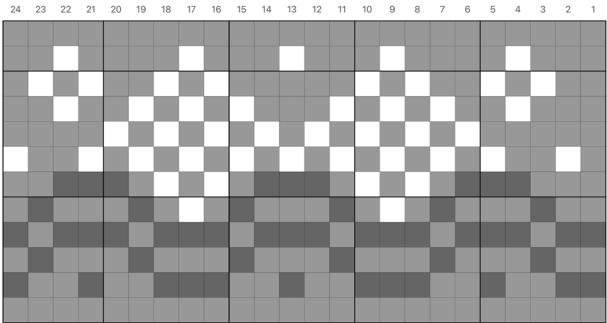
Each Doodle micro chart is 24-sts wide, and can be used standard (darker MC) or inverted (lighter MC) contrast.

Chart Key  Knit in **darker** color  Knit in **lighter** color  Knit in **accent** color



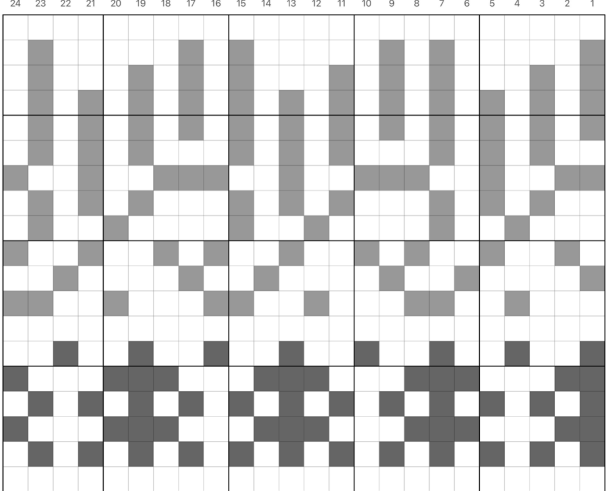
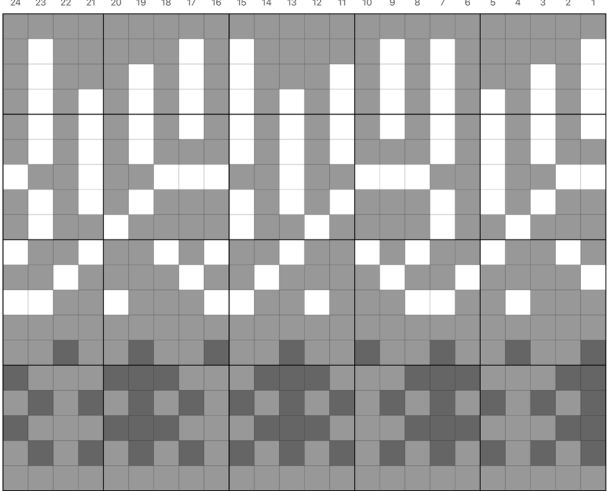
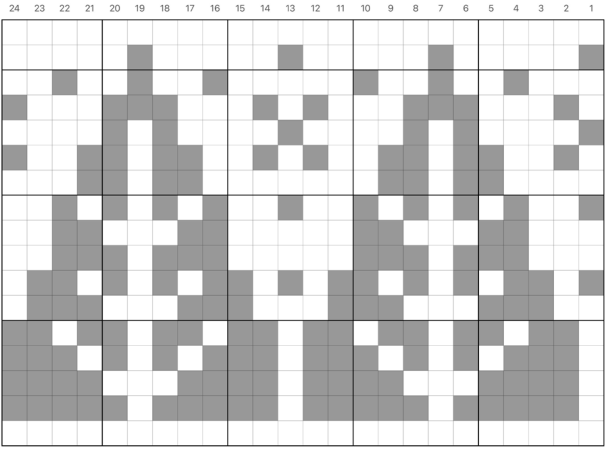
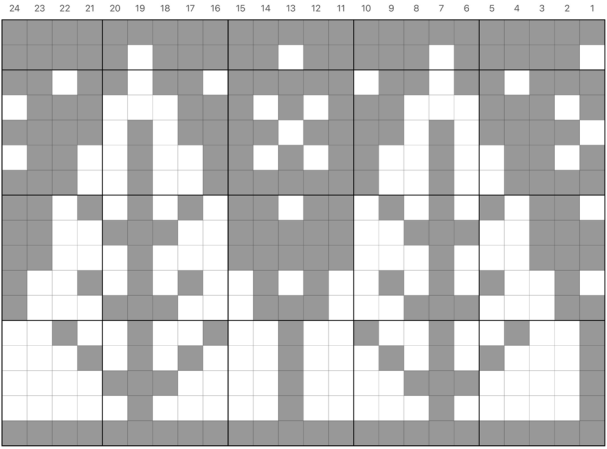
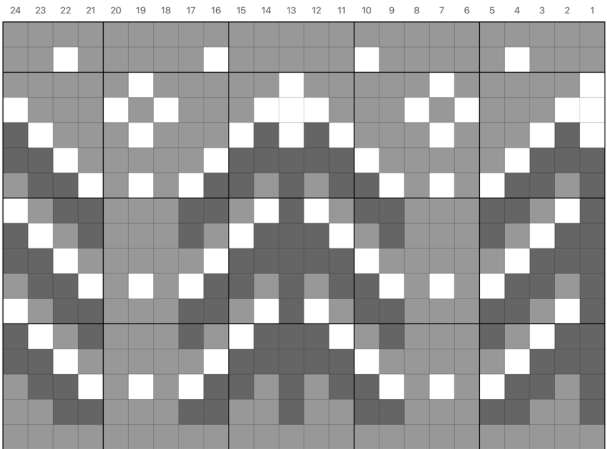
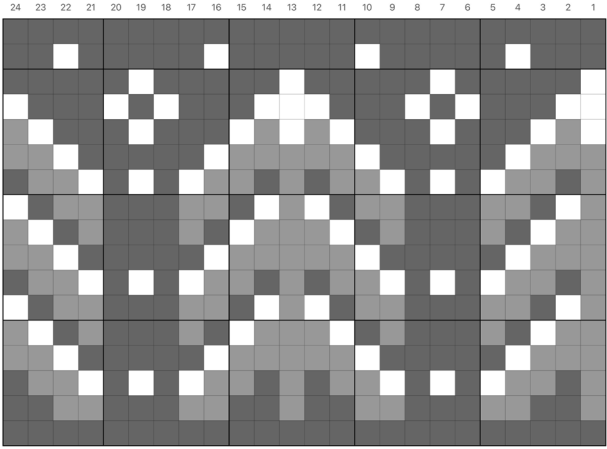
Each Doodle micro chart is 24-sts wide, and can be used standard (darker MC) or inverted (lighter MC) contrast.

Chart Key    Knit in **darker** color    Knit in **lighter** color    Knit in **accent** color



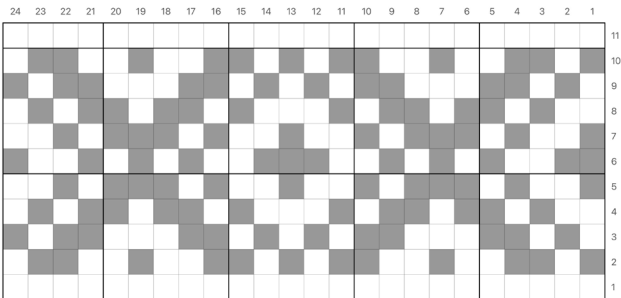
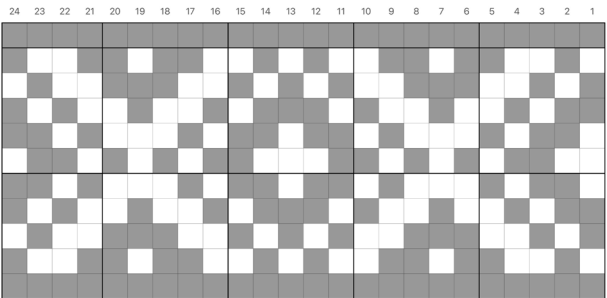
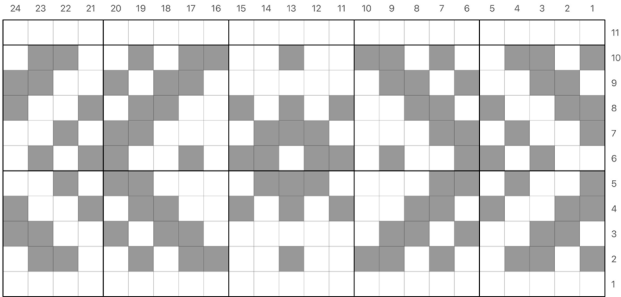
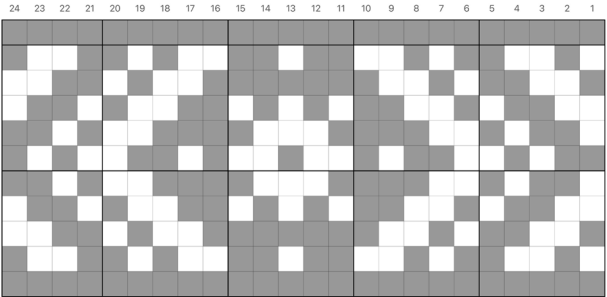
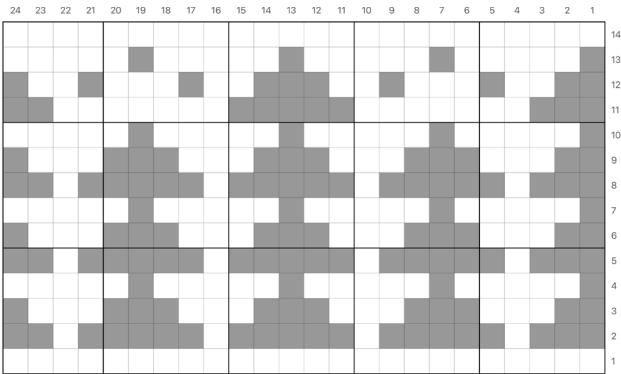
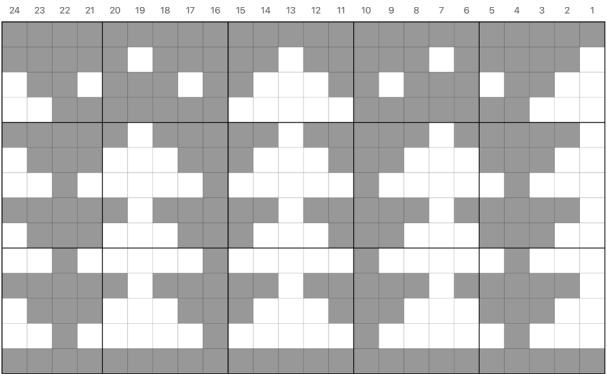
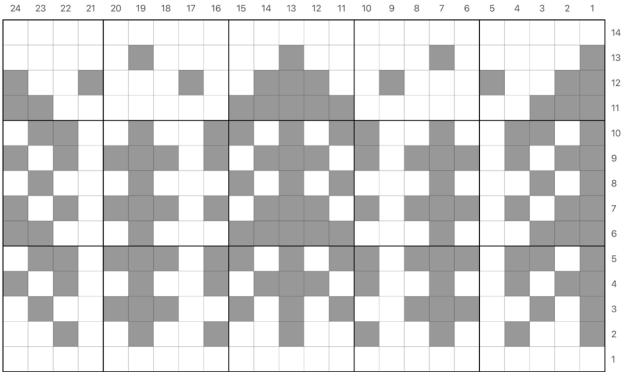
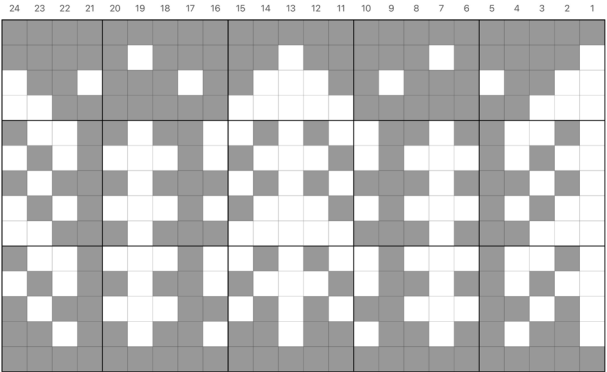
Each Doodle micro chart is 24-sts wide, and can be used standard (darker MC) or inverted (lighter MC) contrast.

Chart Key  Knit in **darker** color  Knit in **lighter** color  Knit in **accent** color



Each Doodle micro chart is 24-sts wide, and can be used standard (darker MC) or inverted (lighter MC) contrast.

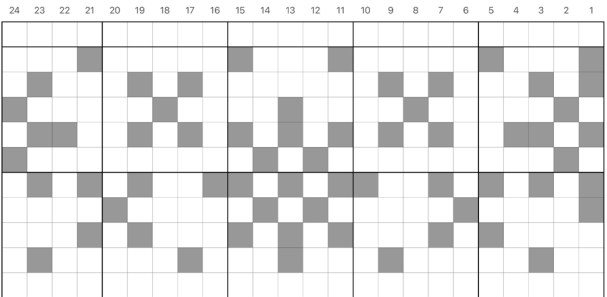
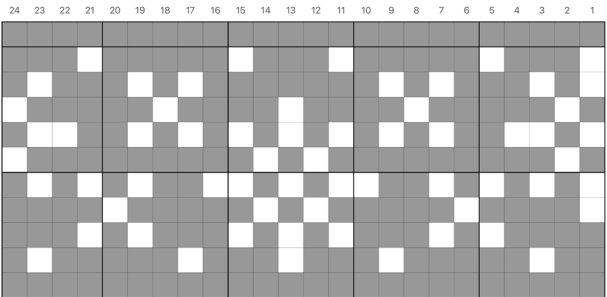
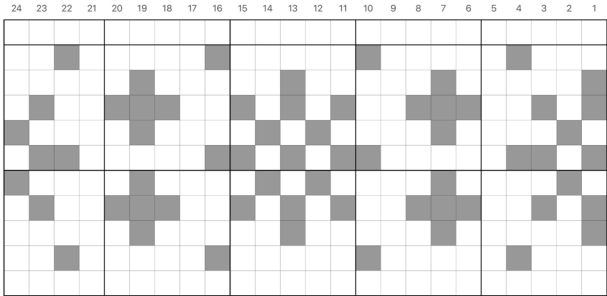
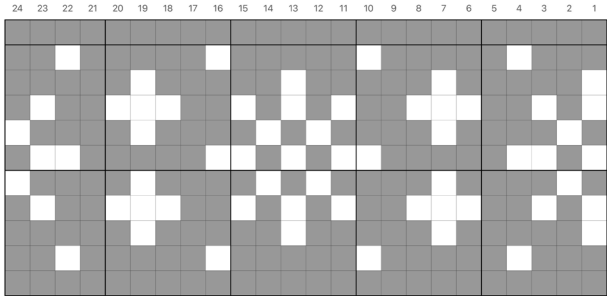
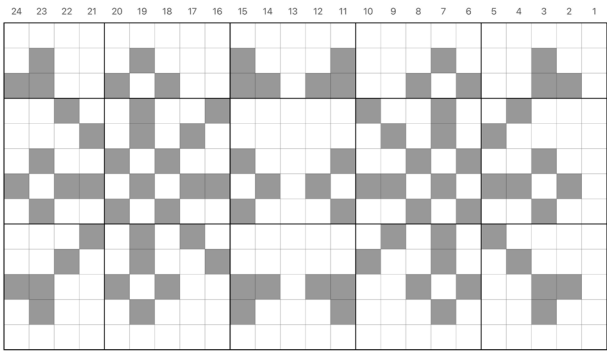
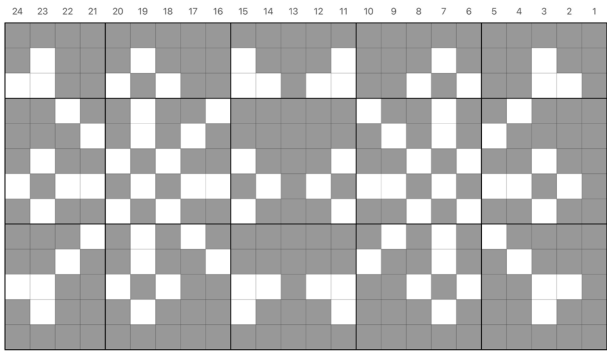
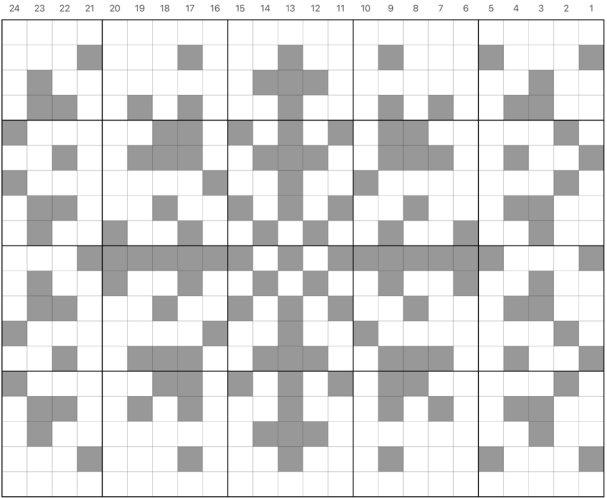
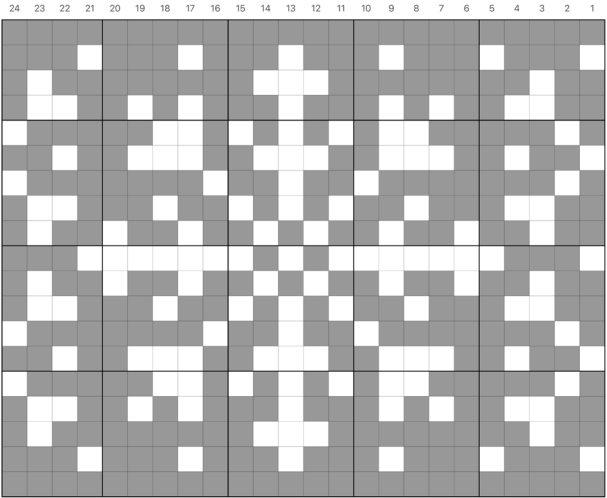
Chart Key  Knit in **darker** color     Knit in **lighter** color     Knit in **accent** color





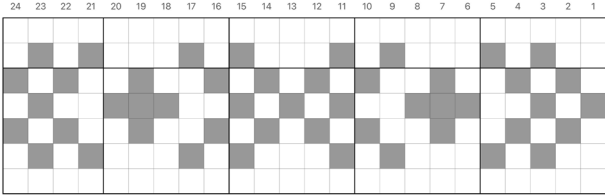
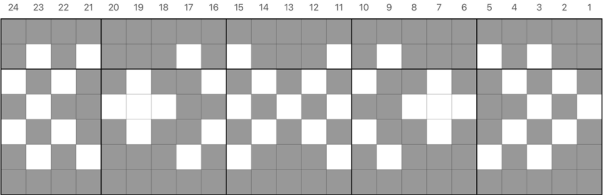
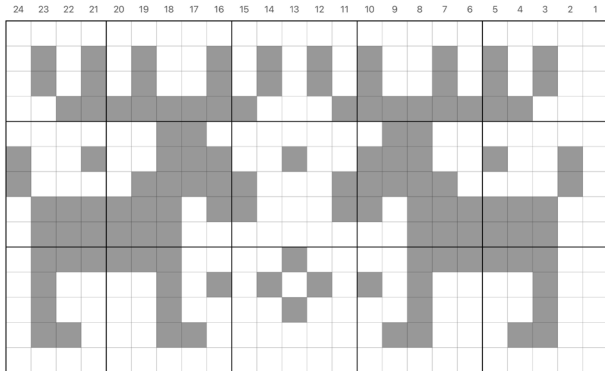
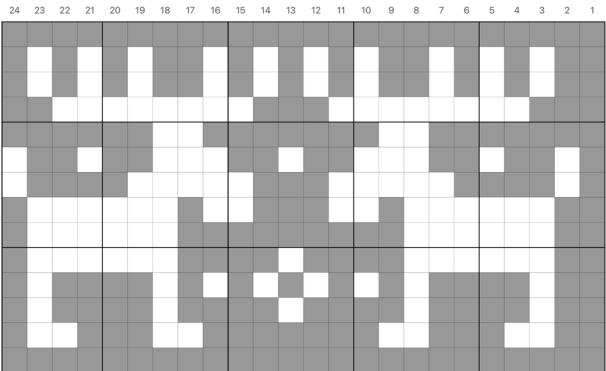
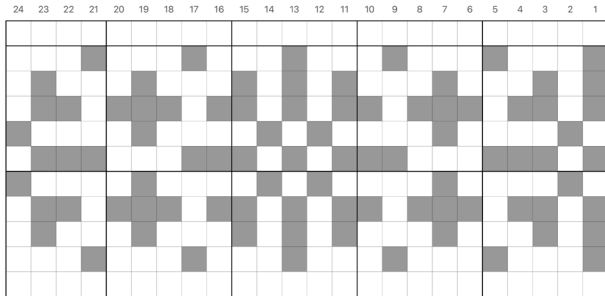
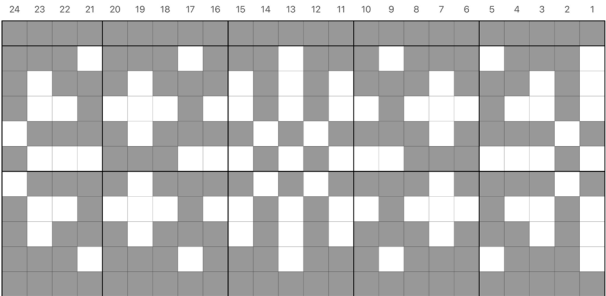
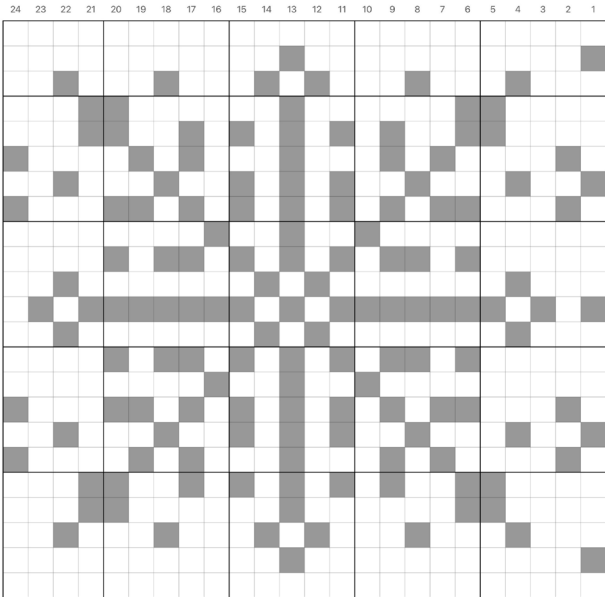
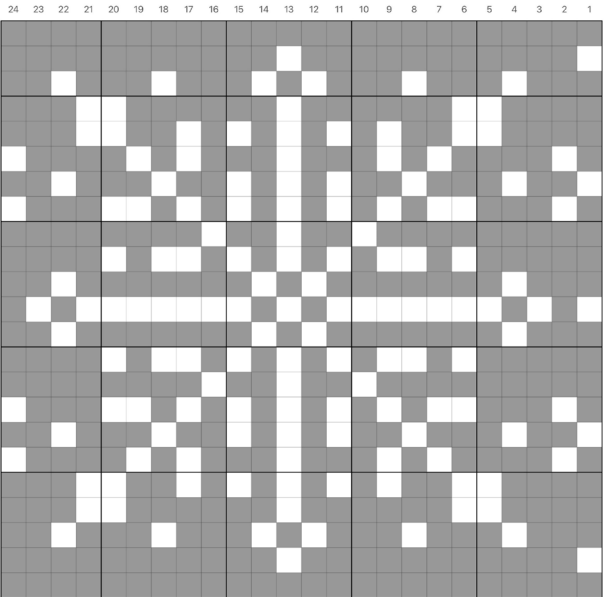
Each Doodle micro chart is 24-sts wide, and can be used standard (darker MC) or inverted (lighter MC) contrast.

Chart Key  Knit in **darker** color     Knit in **lighter** color     Knit in **accent** color



Each Doodle micro chart is 24-sts wide, and can be used standard (darker MC) or inverted (lighter MC) contrast.

Chart Key    Knit in **darker** color    Knit in **lighter** color    Knit in **accent** color



Use these blank charts to **create your own doodles** to use within this pattern, or any other Doodle pattern! **Each chart is 24-stitches wide**, so they all work together. Charts can be as tall or short as you like!

Chart Key 

Knit in **darker** color

Knit in **lighter** color

24 23 22 21 20 19 18 17 16 15 14 13 12 11 10 9 8 7 6 5 4 3 2 1

6  
5  
4  
3  
2  
1

24 23 22 21 20 19 18 17 16 15 14 13 12 11 10 9 8 7 6 5 4 3 2 1

8  
7  
6  
5  
4  
3  
2  
1

24 23 22 21 20 19 18 17 16 15 14 13 12 11 10 9 8 7 6 5 4 3 2 1

10  
9  
8  
7  
6  
5  
4  
3  
2  
1

24 23 22 21 20 19 18 17 16 15 14 13 12 11 10 9 8 7 6 5 4 3 2 1

12  
11  
10  
9  
8  
7  
6  
5  
4  
3  
2  
1

24 23 22 21 20 19 18 17 16 15 14 13 12 11 10 9 8 7 6 5 4 3 2 1

15  
14  
13  
12  
11  
10  
9  
8  
7  
6  
5  
4  
3  
2  
1

24 23 22 21 20 19 18 17 16 15 14 13 12 11 10 9 8 7 6 5 4 3 2 1

8  
7  
6  
5  
4  
3  
2  
1

24 23 22 21 20 19 18 17 16 15 14 13 12 11 10 9 8 7 6 5 4 3 2 1

10  
9  
8  
7  
6  
5  
4  
3  
2  
1

24 23 22 21 20 19 18 17 16 15 14 13 12 11 10 9 8 7 6 5 4 3 2 1

12  
11  
10  
9  
8  
7  
6  
5  
4  
3  
2  
1

24 23 22 21 20 19 18 17 16 15 14 13 12 11 10 9 8 7 6 5 4 3 2 1

15  
14  
13  
12  
11  
10  
9  
8  
7  
6  
5  
4  
3  
2  
1

Pacific Knit Co. © 2023 | www.pacificknitco.com | #ArcticDoodleCowl

Page 15

## BLOCKING

Place live sts on waste yarn and block the cowl to the [flat schematic](#) (pg. 3).

NOTE: My personal preference is to block my infinity cowls prior to seaming because it provides a smoother edge for grafting and dries more quickly with less bulk.

## SET UP

Place the live sts back onto the working needle. [Remove the provisional waste yarn](#), and place cast on stitches onto a spare needle.

Arrange the tube of the cowl in the shape of a “donut”, similar to the finished shape of the cowl. The two ends of the cowl will be grafted seamlessly in the round.

See [Grafting Diagrams](#) (pg. 17) for more information about the desired orientation of the finished tube, with or without a twist in the finished object.

Ensure that you are using the left needle from the live edge, and the opposite needle from the cast on edge (i.e. needles you are working from should be parallel to each other, with both held in your left hand).

## GRAFTING

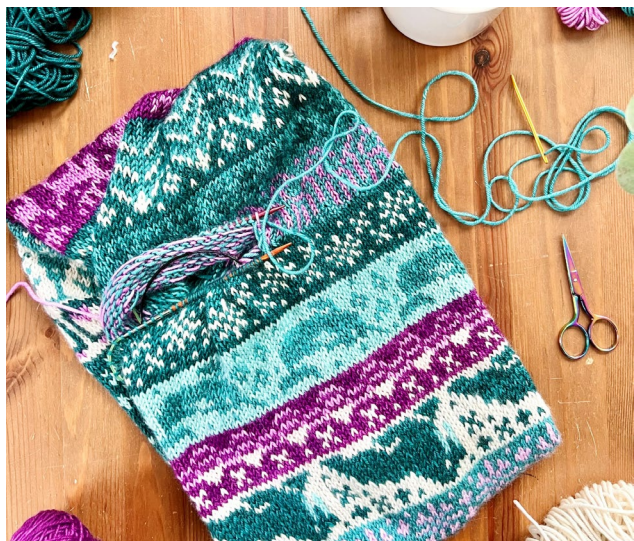
Place the length of yarn for grafting on a tapestry needle, and with wrong sides of fabric facing each other, use the Kitchener Stitch to graft the live stitches and cast on stitches together using the instructions below:

**Set up:** Thread the yarn tail through a tapestry needle. Insert purlwise through 1<sup>st</sup> st in front, leave on. Insert knitwise through 1<sup>st</sup> st in back, leave on.

Pull yarn all the way through for each step.

1. Insert tapestry needle knitwise into first stitch on front needle. Remove from needle.
2. Insert tapestry needle purlwise into second stitch on the front needle. Do not remove from needle.
3. Insert tapestry needle purlwise into first stitch on back needle. Remove from needle.
4. Insert tapestry needle knitwise into second stitch on back needle. Do not remove from needle.

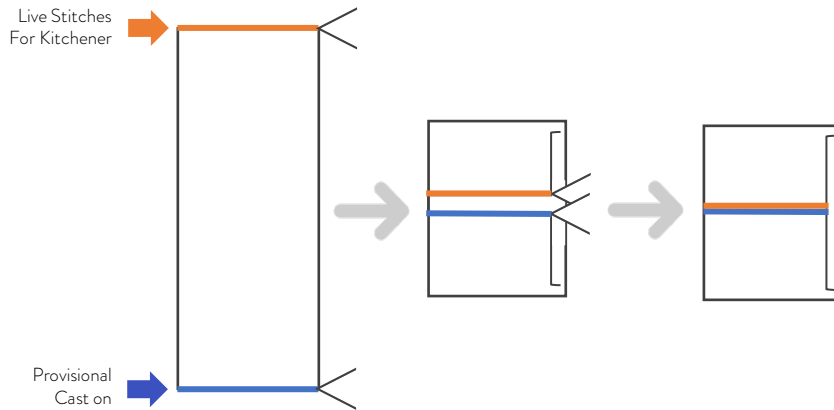
Rep steps 1-4 until all sts have been grafted together.





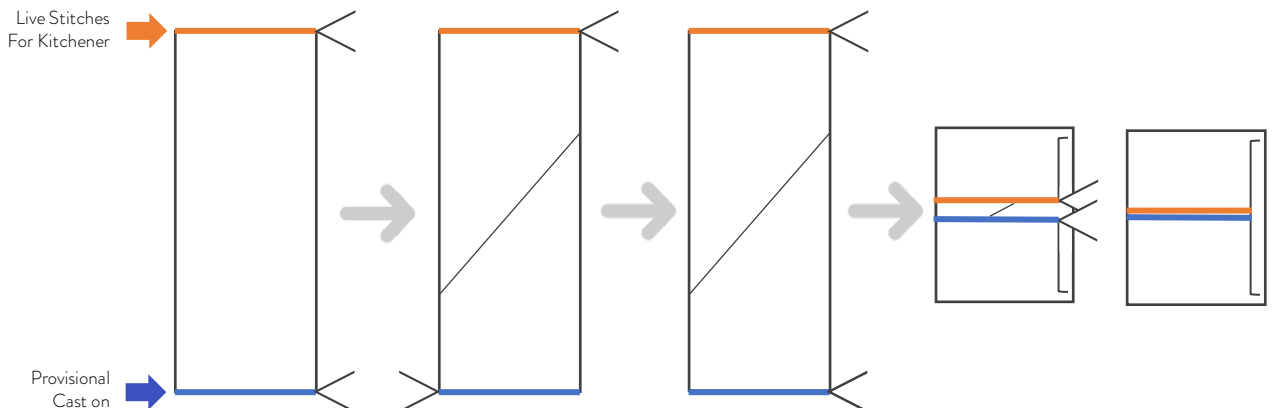
## BASIC INFINITY COWL (NO TWIST)

- **Step 1:** Lay the tube of the cowl on a flat surface, with provisional cast on edge at the bottom, and the live sts at the top. Both sets of needles should both be facing towards the right, as shown.
- **Step 2:** Fold the top down and fold the bottom up, both towards the centerline of the tube to create a donut shape.
- **Step 3:** With both working needles (front and back) in your left hand, begin grafting together (pg. 16).



## TWISTED INFINITY COWL

- **Step 1:** Lay the tube of the cowl on a flat surface, with provisional cast on edge at the bottom, and the live sts at the top. Both sets of needles should both be facing towards the right, as shown.
- **Step 2:** Twist the cowl across the middle, so provisional cast on needles now face in the opposite direction. Then shift half of the stitches on cast on edge, so that both sets of needles are both facing to the right again (without removing the twist in the body of the cowl). Ensure that your charts aligns with your shifted BOR location.
- **Step 3:** Fold the top down and fold the bottom up, both towards the centerline of the tube to create a donut shape.
- **Step 4:** With both working needles (front and back) in your left hand, begin grafting together (pg. 16).



**Pacific Knit Co.** reconnects you with the creative process of knitting by using modular colorwork charts, engaging geometric repeats, and easy-to-follow customization options.

Many knitters want to adjust a pattern, but struggle with modifications or find the whole process intimidating.

My patterns are designed to help you **customize your project within a structure** so you eliminate the guesswork, while building valuable skills you can use again and again.

- **Modular or mix-and-match charts**
- **Alternate yarn weights and/or gauges**
- **Flexible sizing (height and circumference)**
- **Pattern modifications built right in**

When I first started knitting, I spent hours learning how to alter a pattern (and do the math!) to create exactly what I wanted. Now I want to encourage adventurous beginners to take on a new challenge within a structure.

Each pattern offered by Pacific Knit Co. provides you with **opportunities for customization in colorwork and construction, built right in**, so you don't have to struggle - just choose exactly the right option for you!

Be sure to tag me **@pacificknitco** in your progress and finished object posts! I love to see how knitters work up my designs and what colors they choose for their palettes.

*NOTE: This pattern is for personal use. Items made from this pattern may not be sold without express permission from the designer.*



**Please email me for pattern support, questions, or general information.**



[www.pacificknitco.com](http://www.pacificknitco.com)



[PacificKnitCo](#)



[@pacificknitco](#)



[jamie@pacificknitco.com](mailto:jamie@pacificknitco.com)

