

ISSUE 17

NORO

KNITTING MAGAZINE

COLORFUL
FALL NEWS!

31 STANDOUT
STYLES

HATS

TRENDY NEUTRALS

COWLS

QUICK KNITS
YOU'LL LOVE

MITERS

STEP-BY-STEP
TUTORIAL

How-to photos

U.S. \$9.99
CAN \$10.99
EUR €7.99
GBP £5.99

\$9.99US \$10.99CAN



54>

0 74470 01784 4

Display until 10/10/20

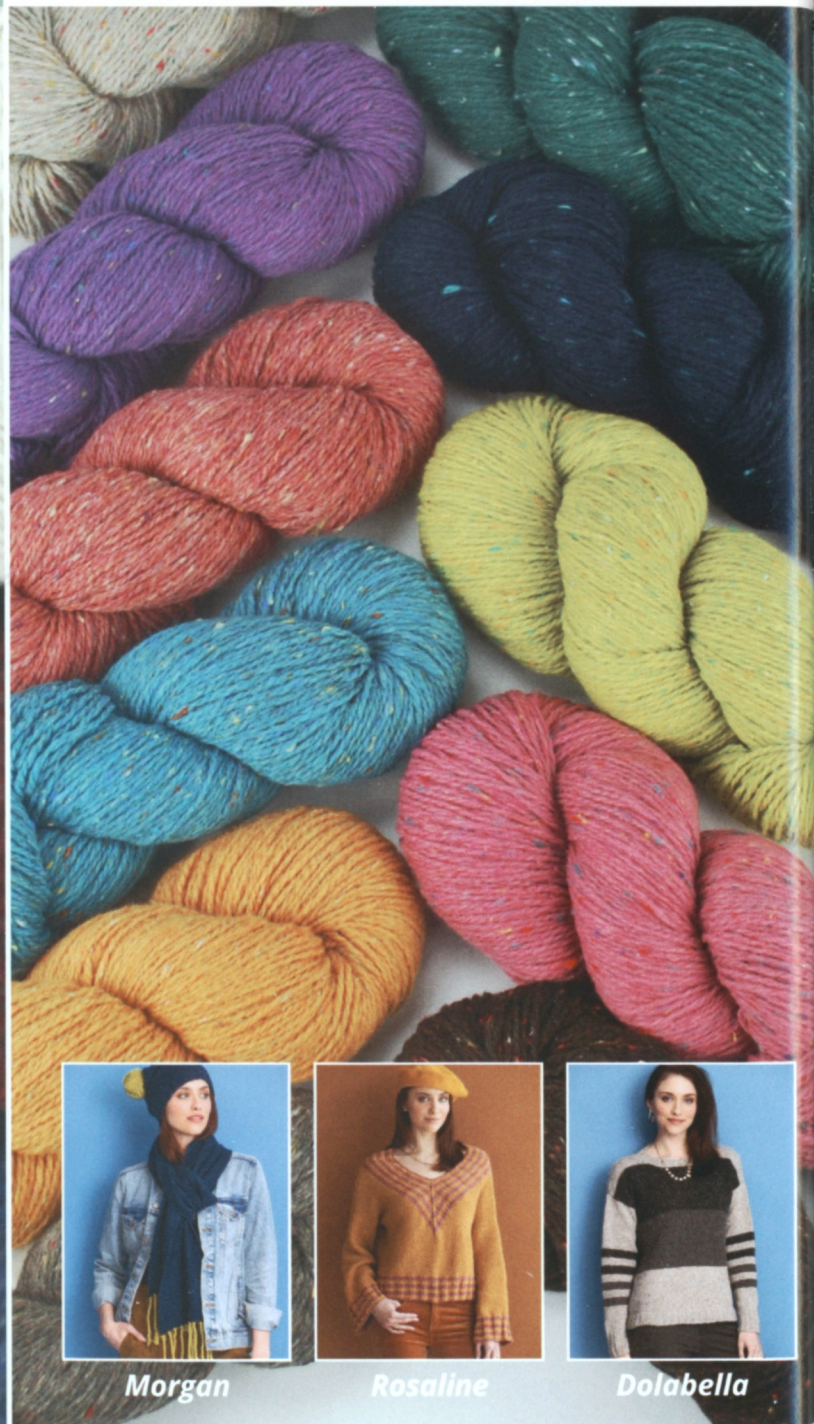


QUEENSLAND
COLLECTION

RECYCLED TWEED

e
Ella Rae

ECO TWEED



Constance



Charmaine



Zara



Morgan



Rosaline



Dolabella

FIND A RETAILER NEAR YOU: [knittingfever.com/store-locator](https://www.knittingfever.com/store-locator)

For more information about these and other great yarns, please visit us:

KNITTINGFEVER.COM



fall/winter
2020

Welcome to

NORO

It's that time of year again. Knitters retreat inside with the tools of their trade, creating treasures to warm themselves and loved ones when they venture out. Cuddle up and choose from tops to remind you of spring greenery, luscious wraps and cowls, hats with intricate stitchwork, sweaters that have the last word in comfort and style, or something soft for the home. New yarns will have you looking to the outdoors for inspiration, and new books will have you dreaming in Japanese, honing your skills with stitch dictionaries, and taking a break for a crocheted menagerie. It's time to focus on your stitches and colors that sing. So head indoors, but make sure you keep the curtains open.



NORO fall/winter 2020

In This Issue

Features

4 YARN UPDATE

Meet Miyabi and Okunoshima, new blends you'll want to know.

6 SISTER BRANDS

New offerings from Araucania, Jody Long, Mirasol, and more.

8 BOOKS

Japanese knitting, a crochet stitch dictionary, and cute crochet wild critters.

54 THE YARNS

What we used.

90 STOCKISTS

Fashion

10 GREEN LIGHT

Verdant tops evoke a spirit of newness and discovery.

18 TACTILE CHROMATICS

Saturated hues and innovative texture cry out to be touched.

26 COME AROUND

Chill in the air? Reach for a lush wrap with eminent drapeability.

32 COOL, CALM, AND COLLECTED

Cables, twisted ribbing, honeycomb: Nothing ties a look together like a hat with fresh details and subtle shading.

38 CONVIVIAL COWLS

Petal-hued cowls frame the face like a bouquet of flowers.

42 ORNATE ORNAMENTATION

Gild your home with pillows and blankets that draw the eye.

48 SOFT SEASON

Eight sweaters hit the sweet spot where comfort meets fashion.

56 PATTERN INSTRUCTIONS

On the Cover

Rich blues, forest green, and violet mesmerize in this asymmetric mitered-square cardigan, knit in Noro Ito colorway #21.

Photograph by Jack Deutsch.
Styled by Jessica Saal.
Hair and makeup styled by Elena Lyakir.

NORO
KNITTING MAGAZINE

Editor in Chief

CARLA SCOTT

Creative Director

JOE VIOR

Copy Chief

DONNA L. NG

Editorial

Associate Editor MOLLY POHLIG

Yarn Editor MATTHEW SCHRANK

Technical Editor LORETTA DACHMAN

Contributing Pattern Editors RENEE LORION

MARI LYNN PATRICK

Advertising

To discuss advertising opportunities,
contact Jessica Denecke at jessica@knittingfever.com

Soho Publishing Company

President ART JOINNIDES

Chairman JAY STEIN

Chief Executive Officer CARRIE KILMER

Publisher DAVID JOINNIDES

Controller ELAINE MOWBRAY

HOW TO REACH US
general inquiries:

www.noromagazine.com

pattern inquiries:

Corrections are posted at www.noromagazine.com

Manufactured and printed in the United States of America

Vol. 9, No. 2 (July 2020).

Noro Magazine is published two times a year.

Published by Soho Publishing, LLC, 104 West 27th Street, 3rd floor,
New York, NY 10001.

Copyright © 2020 by Knitting Fever, Inc. (KFI), P.O. Box 336,
315 Bayview Avenue, Amityville, NY 11701. All rights reserved.

No part of this magazine may be copied or reproduced by any means
without written permission of the publisher. The foregoing does not
apply to limited copies (up to 3) for purely personal, non-commercial,
non-distributive uses such as enlargement or marking.

IMPORTANT NOTICE: Single copies \$9.99 in U.S.A., \$10.99* in Canada.
*Recommended price.

LYKKE
— MAKE HAPPY —

GROVE

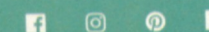
NEW! BAMBOO NEEDLES



Available in 3.5 and 5-inch gift sets, both in two finishes:
a natural beige jute canvas and a chartreuse green
textured basketweave effect.

FIND A RETAILER NEAR YOU:
knittingfever.com/store-locator

lykkecrafts.com
knittingfever.com



NORO fall/winter 2020
YARN UPDATE

THE NATURAL WORLD

By Molly Pohlig

Getting back to basics is pure luxury with all-natural fibers and colors inspired by the great outdoors.

OKUNOSHIMA (shown left in colorway #3)
Okunoshima is a small Japanese island known for its large population of wild rabbits, which you'll keep in mind when you're wrapped in this heavenly blend of natural fibers.

35% silk, 28% wool, 20% angora,
17% mohair; 241yds/100g
Yarn Weight: 4

MIYABI (shown right in colorway #9)
Named for the traditional Japanese aesthetic ideal of elegance and refinement, Miyabi is a loosely plied wool with a healthy dose of cashmere, making it ideal for chilly walks in next-to-the-skin winter accessories.

65% wool, 35% cashmere; 273yds/100g
Yarn Weight: 4



OKUNOSHIMA



MIYABI

PHOTOGRAPH BY MARCUS TULLIS

ON SALE
NOW

TIMELESS NORO KNIT BLANKETS

25
COLORFUL
& COZY
THROWS

COZY AND COLORFUL

25 new and favorite blanket
patterns from Noro will keep your home
bright and warm all year long.

FLEXIBOUND • ISBN: 978-1-64021-046-2



sixth&spring books

BUNDLE UP

6 NORO

Wool, alpaca, and merino blends stand up to the elements. By Molly Pohl



ARAUCANIA Painted Suri (96% Suri alpaca, 4% polyamide; 285yds/100g) is a name to remember, with a fluffier mien than most alpaca blends.



ARAUCANIA Huasco Sock Kettle Dye (75% superwash merino wool, 25% nylon [recycled]; 439yds/100g) takes a fan favorite and changes the dye process, resulting in saturated, uniform colors across the palette.

NORO fall/winter 2020



QUEENSLAND Recycled Tweed (40% recycled wool, 40% recycled polyester, 20% recycled acrylic; 382 yds/100g) has everything you love about a reliable, tweedy yarn—made of 100% recycled materials.



JUNIPER MOON FARM Celestina (60% virgin cashmere, 26% extrafine merino wool, 14% nylon; 186yds/50g) has a unique braided effect that will result in an intricate, one-of-a-kind fabric.



JODY LONG Andeano (85% wool, 15% alpaca; 175yds/200g) is a bulky-weight beauty with a loose and easy twist.



ELLA RAE Kid Fur (56% superfine alpaca, 25% mohair, 19% polyester; 82yds/50g) is here for fun and fluffy trims and dreamy sweaters.



JUNIPER MOON FARM Beatrix (54% extrafine merino wool, 30% angora, 16% nylon; 109yds/50g) combines sturdy wool and supersoft angora for the next-to-skin wearability you want for wintry accessories.



JODY LONG Glam Haze (53% alpaca, 22% mohair, 14% polyester, 11% metallic fiber; 109yds/50g) has it all—softness, stretch, and sparkle.



ELLA RAE Eco Tweed (75% merino, 25% polyamide; 328yds/100g) gives organic wool a boost, turning this speckled tweed more pliable.

MIRASOL Phullu (42% baby alpaca, 42% extrafine merino wool, 16% polyamide; 274yds/100g) has a hazy quality and a tubelike construction for cold-weather accessories.



NORO 7



Crochet Every Way Stitch Dictionary: 125 Essential Stitches to Crochet in Three Ways
By Dora Ohrenstein (Abrams Books; \$34.95)
Sometimes you flip back and forth through a stitch dictionary, unsure if it's a necessary addition to your craft bookshelf. Not so in the case of this gorgeous offering from crochet maven Ohrenstein; this is a must-have, especially if you are interested in the shaping of crochet designs. The patterns are divided into six chapters: Closed Stitches; Mesh, Filet, and Easy Lace; Textured Stitches; Shells; Classic Lace; and Ripples and Waves. Photographs and diagrams accompany each stitch, with notes and explanations about how its particular pattern repeats work. Then Ohrenstein demonstrates its use as a basic pattern, for edge shaping, and for internal shaping. The explanations here are clinical, and you'll soon be using this stitchwork to create your own expertly shaped designs. Bonus: Each chapter follows its own color themes, so the elegant swatches will also be giving you ideas for your crochet palette.



Japanese Knitting: Patterns for Sweaters, Scarves and More
By Michiyo, Translated by Gayle Roehm (Tuttle Publishing; \$16.99)
If you have ever longed for the garments in a book of Japanese knitting, only to find yourself stymied by your lack of Japanese and charts that resemble plans for top-secret engineering projects, this is the book for you. Knitter and translator Roehm has taken 23 pieces (both knitted and crocheted) by popular Japanese knitwear designer michiyo and, for the very first time, translated them for an English-reading audience. It's exactly what you've been craving: a clean, refined Japanese style that doesn't sacrifice intricate stitchwork. Whether you go for the modern angles of a contemporary tennis pullover, the crocheted colorwork of a short-sleeve cardigan, a convertible crocheted vest/stole, or an elegant, simple shawl, you won't be disappointed. Roehm's notes are immensely helpful, and her dictionary of knitting symbols will be helpful both with this book and your future forays into Japanese knitting.



Keiko Okamoto's Japanese Knitting Stitches: A Stitch Dictionary with 150 Amazing Patterns
By Keiko Okamoto, Translated and Introduced by Gayle Roehm (Tuttle Publishing; \$18.99)
There has perhaps never been a better time to nerd out and stare at stitches. Roehm is at it again, this time translating 150 stitch patterns by one of Japan's most well-known designers, Keiko Okamoto. Expect the unexpected in this dictionary: along with a number of classic stitches to get your needles into, there is much for the more adventurous knitter to explore, combining not only colors, but various textures in a single stitch pattern. Your imagination is your only limitation, but if you're having trouble getting from the pattern to the finished garment, instructions are included for seven whimsical projects, including three-dimensional arm warmers, a Fair Isle basket cover, and a showstopping black-and-white Nordic coat. Roehm's stitch symbol translations are again a lifesaver, and familiarizing yourself with them is going to open up a whole new world of knitting.



Cute Crocheted Wild Animals
By Emma Varnam (GMC Books; \$19.95)
Think less "Wild Kingdom" and more "the sweetest, cuddliest wild animals you've ever seen." Varnam is adept at the adorable, and here she turns her hand and her hook to create five pairs of cuddly toys: zebras, monkeys, pandas, lions, and elephants. There's also an extensive wardrobe to create that can be worn by any of the species (all ten toys are similarly sized), from tops, trousers, and pajamas to swimwear, shoes, and accessories (the inner tube and hammock would be first on our list). New to crochet? Varnam includes a helpful index for hooking newbies, with clear instructions and drawings to explain the ABCs of basic crochet stitchwork. Bottom line? You're going to have trouble making only one of these little darlings, and we bet you'll end up with the whole menagerie.

FALL/WINTER 2020



CHANGE IS COMING

The green, brown, and gold of Tsuido colorway #8 are flecked with bright moments of an almost acidic yellow, calling to mind bright sunlight dappling a lush forest scene. Jeannie Chin's shawl-collar cardigan is similarly lush, with set-in sleeves, exaggerated ribbing at the bottom hem, and a cozy, oversized silhouette just meant for long walks on fall days.

PHOTOGRAPHS BY JACK DEUTSCH.
STYLED BY JESSICA SAAL.
HAIR AND MAKEUP STYLED
BY ELENA LYAKIR



1



Verdant tops get the go-ahead for this season, evoking a spirit of newness and discovery.

GREEN LIGHT

When spring seems a distant dream,
conjure the **fantasy** with its colors.



2

Rosemary Drysdale's turtleneck does double duty: Wear it on its own when there's a slight chill in the air, or under a blazer when the weather gets more serious. Tabi colorway #6 adds blue, gray, and purple to green, striping across a stockinette body and ribbed neck, hem, and cuffs.





Banish winter blues with a palette picked from bouquets and buds, April showers and May flowers.



Hints of green settle into a calm background of blue and gray in Miyabi colorway #12. This classic, slim-fit V-neck vest, designed by Bea Naretto, hits the body at hip level, and the set-in armholes, hem, and V-neck are all edged with ribbing.



Okunoshima colorway #4's candy-store pastels of green, pink, and puce will brighten your days until spring rolls around again, with stripes that utilize just one color at a time. Kennita Tully's pullover presents a fresh, modern silhouette with a relaxed fit, a high-low hem, and three-quarter-length sleeves.



TACTILE CHROMATICS

Can you touch color? When saturated hues combine with innovative texture, the answer is yes.

The rich dark blue, forest green, and violet of Ito colorway #21 provides a fascinating medium for garter-stitch sleeves and a showstopping body of mitered squares. This asymmetric closureless cardigan begins with a long I-cord, from which the first row of squares are picked up and knit. Raglan armholes intensify the angular effect, following the diagonal lines of the body. Turn the page for a how-to.

PHOTOGRAPHS BY JACK DEUTSCH
STYLED BY JESSICA SAAL
HAIR AND MAKEUP STYLED BY ELENA LYAKIR



Seamless sides and mitered squares have you scratching your head? We're here to show you how.



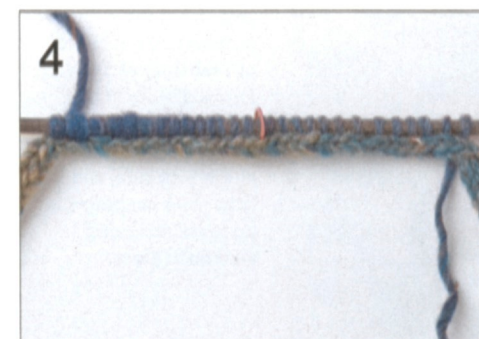
The lower edge of this jacket begins with a simple 3-st I-cord. Using double-pointed needles, k3, but do *not* turn the work.



Slide the sts back to the other end of the needle to work the next row from the right side. Bring the yarn behind the work and knit the 3 sts.



After working a length of I-cord, pick up and knit sts along the edge, inserting the needle through 2 loops, as shown, and knit a stitch onto the needle.



Stitches are picked up along the I-cord edge to work the first mitered square. Be sure to pick up in a straight line, picking up in the same 2 loops.



Shown here are two completed mitered squares along the first row.



When coming back to work the second row of miters, pick up sts along one side of the first square, then pick up 1 st in the I-cord edge, as shown.



Then pick up sts along the opposite side of the second square, ready to work the next mitered square.



Shown here is the completed miter.



This mitered-square cardigan will turn heads whether you're coming or going. Shown, knitting with Lykke's Driftwood needles.





Feel your best self in bold stripes and touchable knits.

Left: A straightforward raglan pullover becomes so much more in the hands of Katharine Hunt. Kanzashi colorway #6 does its work in stripes of cerise, oceanic blue, and pea green, accentuating the nubby texture. Rolled edges and a slight mock turtleneck make this a bold yet casual look.

Right: Mari Lynn Patrick turns the staid cardigan into a work of art, employing the luscious purples and minty blue of Tsubame colorway #11 for maximum impact. Eye-catching slip stitches, raglan sleeves, a hook-and-eye closure, and long, sleek shaping add up to an intriguing statement piece.





**Nuances
of texture
become
palpable**
in a vibrant
wash of
color.

Annabelle Speer's raglan crewneck artfully combines two colorways of Bachi: bright and punchy purple, red, and yellow #3 for the body, and its slightly subtler, sun-faded echo in #6 for the sleeves. Seed-stitch stripes alternate with stockinette, resulting in striking textural changes from stripe to stripe.



The inspiration for Faina Goberstein's generously sized wrap derived from nature, but it's perfect for cozy days at home. Staghorn-inspired cables run the length of the piece in opposite directions, with brioche stitch in between for the body and at the cables' edges. The deep, earthy tones of Miyabi colorway #18 are another call to nature, with stripes that run perpendicular to the cables.

9

COME AROUND

These days call out for **lush, oversize knits** with eminent drapeability.



PHOTOGRAPHS
BY JACK DEUTSCH.
STYLED BY JESSICA SAAL.
HAIR AND MAKEUP STYLED
BY ELENA LYAKIR.

One shoulder, two shoulders,
wrapped around the neck: **elegance**
and **flair** in every iteration.



This page: Cathy Payson's rectangular wrap is knit in the pastel blues and lilacs of Okunoshima colorway #3. A hypnotic pattern of diamond cables traverses a highly textured background, and the edges continue the texture with garter stitch borders.

Opposite: In love with oceanic blue? The stunning ultramarine of Tsuido colorway #1 is flecked with whitecaps here and there, elevating Fatimah Hinds's easy cable shawl into a colorful masterpiece. The rectangular piece is knit sideways in garter stitch, with a bold cable running along one side.





12

This dramatically textured **wrapped cable stitch** is easy to learn and fun to knit. We'll show you how.



To work the 4-st wrap, stitches are slipped back and forth while wrapping the main color yarn three times around the four slipped stitches.



Shown here, working the third wrap: With the main color (MC) in front, slip the four stitches on the right-hand needle back to the left-hand needle.



To complete the 4-st wrap, bring the MC to the back of the work and knit the four slipped stitches.



To keep the yarns from getting tangled when changing colors, always bring the MC *over* the contrasting color (CC).

Opposite page and right: Andi Smith's generously sized cable scarf is all about a windy walk on the dunes: the vivid maritime blues and sea greens of Silk Garden Sock colorway #S8 and Silk Garden Sock Solo #S32 summon thoughts of all things nautical, with the undulating cables reminiscent of winding paths through the dunes. An innovative four-stitch wrap pattern gives cables a modern charm. We used Lykke Driftwood needles for this tutorial.



Then always bring the CC *under* the MC. If you continue alternating the colors in this way, the yarns will never become twisted.



When working a 3-st right purl cross (RPC), slip 1 CC st to the cable needle and hold it to *back* of work. Then k2 MC sts, and p the st from the cn.



When working a 3-st left purl cross (LPC), slip 2 MC sts to cn and hold it to *front* of work, as shown. Then p1 CC st, and k the 2 sts from the cn.



Shown here is the wrong side of the scarf.



COOL, CALM, AND COLLECTED

When it comes to accessories,
nothing **ties a look together** like a
subtly shaded, **richly textured** hat.



13

The hazy purples and rustic
browns of Tabi colorway #5
stripe horizontally across this
elegant beanie. Anastasia
Blaes has created a visually
arresting pattern of twisted
ribbing running vertically from
brim to crown, with eyelets
interspersed at intervals
between the geometric cables.

14

A gray, cabled hat is a winter wardrobe staple if there ever was one, and Christy Kay Morse's version elevates it to a statement accessory. Taido colorway #7 is a moody gray with white flecks, the perfect complement to Morse's vertical zigzag cables laid over a garter stitch background.

15

No matter your wintry vestments, cables in **dappled grays** and neutrals are the appropriate finishing touch.

Matthew Schrank's in-the-round design is worked in the frosty grays, light blue, and muted purple of Okunoshima #2. Ribbing at the brim segues effortlessly into the twisting cables that wind their way up to the hat's crown.



16



Honeycombs look right at home in honeyed shades of Miyabi colorway #9. Cheryl Toy's hat takes apian inspiration to a new level, topping off these gorgeous cables and golden-hued stripes with an ebullient pompom.

CONVIVIAL COWLS

Petal-hued cowls frame the face like a bouquet of flowers.



Waves of mauve, lavender, and clay, courtesy of Okunoshima colorway #7, merge in a series of graceful texture and eyelet patterns. Knit in the round and punctuated with rows of garter stitch, Vanessa Ewing's infinity scarf can be worn unlooped for a casual air, or around the neck for coziness.

18

Shaina Billow's two-color cowl is a one-stop fashion statement, combining the deep blues and purples of Bachi colorway #7 with the nubby bouclé grays of Kanzashi colorway #1. A slip-stitch brick pattern is used throughout, and the cowl's generous height will keep your neck covered without the bulk of a double loop.

19

Bandana fans can continue to wear their favorite accessory on cooler days: Rosann Fleischauer's cowl is knit sideways from end to end, and seamed together at the back in finishing. Its colorway #16's puce, pink, and earth tones (with pops of blue) stripe vertically across the triangular cowl.

ORNATE ORNAMENTATION

Gild your home with rich textures,
deep colors, and patterns
that draw the eye.

PHOTOGRAPHS BY JACK DEUTSCH
STYLED BY JESSICA SAAL
HAIR AND MAKEUP STYLED BY ELENA LYAKIR

Bonnie Franz's afghan is a texture-lover's dream, utilizing a bouclé yarn (Kanzashi) and a bulky yarn (Bachi) in the violets, blues, and greens of their respective colorway #7s. Squares are made individually, with Kanzashi worked in stockinette and Bachi worked in a broken rib stitch. Bachi is used to seam the squares in finishing with a garter-stitch edging.



Vibrant patterns and daring colorways give home decor a bohemian elegance.



Opposite: The traditional log cabin design gets a modern twist in Sabine Tulp's hands. The center panel is worked first, with stripes of variegated Silk Garden colorway #471 alternating with Silk Garden Solo colorway #17. The pattern is echoed in the left and right panels that are picked up from the center panel. A wide seed-stitch border in Silk Garden Solo colorway #31 finishes this contemporary take.

This page, above and at left: Think chevrons are old hat? Think again. Matthew Schrank's innovative pillow design integrates intarsia stripes of different lengths, employing Kureyon colorways #188 (purple, green, and black) and #343 (beige, blue, and brown). This cover is knit in one piece, with colors reversed for the front and back.

A large staghorn-inspired center cable ensures that Audrey Drysdale's colorful pillow will grab any room's attention. Bachi colorway #5 is a moody rainbow striping horizontally behind the cables, and the cover is made up of three pieces: front and two backs, seamed with an opening left at the back for easy removal.

At right: We used Lykke Driftwood needles to demonstrate the stitches.

The central staghorn cable provides dramatic flair but is simple to knit.



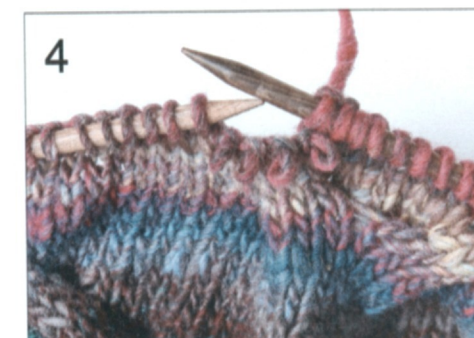
8-st RC (with a cable needle): Slip 4 sts to cn and hold these sts to the back of the work, as shown.



Knit the next 4 sts on the left-hand needle, making sure that the working yarn is in front of the sts on the cn, as shown.



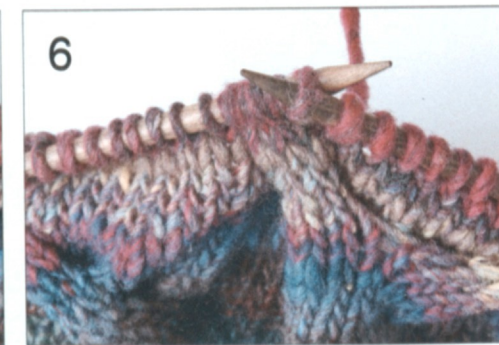
To complete the 8-st RC, knit the 4 sts directly from the cable needle, as shown.



8-st LC (without a cable needle): Slip the next 4 sts off the left-hand needle and let them fall to the front of the work, as shown.



Slip 4 sts from left-hand needle to right-hand needle, then slip the sts lying at the front to the left-hand needle, one at a time, as shown.



Return the 4 slipped sts from the right-hand needle back to the left-hand needle and knit these 8 twisted stitches.

SOFT SEASON



These sweaters are designed to wrap you up in **comfort and ease**, while keeping you on the **fashion forefront**.

Opposite: Lilac and lavender stripe against bursts of minty green and tangerine in Bachi colorway #11, highlighting the overall block pattern of alternating eyelet and stockinette. Garter-stitch borders edge the loose-fitting, drop-shoulder cardigan. The collar is knit separately in garter stitch and sewn on in finishing.

Above left: Make your statement in the delightful pink of Tsuido colorway #4. Two rectangles form the front and back, with a five-stitch band of seed stitch that slants across a stockinette background. A narrow band of seed stitch at the edges gives a hint of shaping. There is no finishing along the wide, casual boatneck.

Above right: Ito colorway #30 is a rainy-day rainbow in blue, purple, green, gray, and a hint of rose in this directional piece featuring a slanted rib pattern with short rows at the side seams. After the shoulder seams are sewn, sleeves are picked up and knit along the armhole edges and worked down to the deep ribbed cuffs.

Wide silhouettes, relaxed fits, and hems that hit just below a crop are your best accessory when layering is on the rise.

27



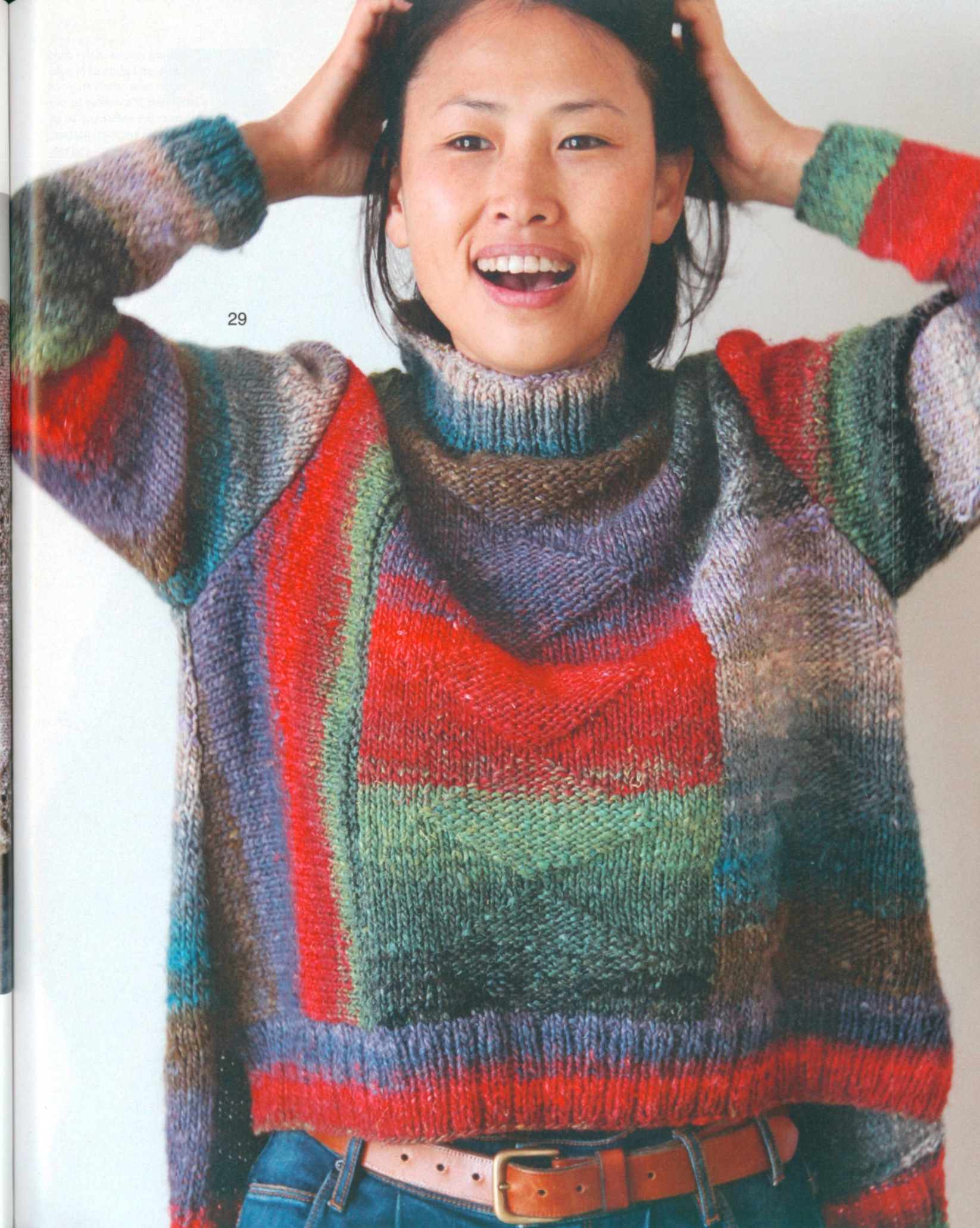
Above left: Snuggling up is easy in the earthy brown and gray of Kureyon colorway #450. Simple stockinette is dotted here and there with clusters of two-stitch right and left cables, and the silhouette is ever-so-slightly shaped, increasing from the lower edge to the bust. Set-in sleeves and rolled stockinette stitches at the edges make it an effortless choice for everyday wear.

28



Above right: Horizontal panels of arrow-shaped lace grace the bust and hem of this angular pullover, with vertical stripes in the pretty pastels of Okunoshima colorway #2. The construction is largely the same as #26, but the side seams here are straight rather than shaped. The top lace panel is narrower than the one below, and a narrow lace band adorns the cuffs of the stockinette sleeves.

29



Opposite: The rich tones of Silk Garden colorway #503 are knit in numerous directions in this visually arresting turtleneck. From the lower ribbed edge, the back's right and center panels are worked up to the shoulder before stitches are picked up and knit for the left side. The slightly shorter front is worked from left to right; stockinette-and-purl diamonds on a stockinette background add texture.

Left: Slanting stripes of the mint green, ochre, and plum of Miyabi colorway #1 take center stage in this collared vest. It's worked in two pieces from the bottom up in an overall textured knit-purl pattern, with a center back seam and two slanted slits for armholes. Short rows shape the lower edges, and all of the outer edges are self-finished.

Right: The nubby texture of Kanzashi, in seascape-shaded colorway #13, transforms the simple stockinette body of this hooded vest knit in one piece from the bottom up. Narrow garter stitch lines the lower edge, with a three-stitch garter selvage at the outer edges and armholes.

30



31



The YARNS

Shown here are the yarns from the Noro Collection used in this issue. Included is relevant information regarding these yarns, including, when possible, an explanation of the meaning of the yarn name.



Silk Garden Sock

(2)



Tabi

(3)



Kureyon

(4)



Okunoshima

(4)



Silk Garden Sock Solo

(2)



Ito

(4)



Miyabi

(4)



Silk Garden

(4)



Silk Garden Solo

(4)



Tsubame

(4)



Tsuido

(4)



Bachi

(5)



Kanzashi

(5)

Bachi 7oz/200g; 262yds/240m: Loosely twisted, this all-wool yarn—named for the straight wooden knitting-needle-like sticks used to play Japanese taiko drums—sports a hazy halo that lends a soft quality to the gradient shades (100% wool).

Ito 7oz/200g; 437yds/400m: Neon-bright strands combine with nature-inspired hues in this woolly two-ply (100% wool). Watch the rainbow unfold as you knit with Noro's stash staple: Ito is, after all, the Japanese word for yarn.

Kanzashi 5.3oz/150g; 229yds/210m: Named for the highly ornamental headpieces worn with traditional Japanese dress, this bouclé yarn (30% mohair, 30% silk, 23% wool, 14% rayon, 3% nylon) is the ultimate attention-getter.

Kureyon 1.75oz/50g; 110yds/100m: Originating with the Western "crayon," the name couldn't be more fitting: With almost as many color combinations as a 120-color box, Kureyon (100% wool) is a true Noro classic.

Miyabi 3.5oz/100g; 273yds/250m: Its name comes from a Japanese aesthetic ideal of grace, elegance, and refinement, and cashmere-blend Miyabi is perfect for shawls, hats, tops, and more (65% wool, 35% cashmere).

Okunoshima 3.5oz/100g; 241yds/220m: Okunoshima is a small island best known as "Rabbit Island" for its plentiful, furry wild denizens, making it an apt name for this soft yarn (35% silk, 28% wool, 20% angora, 17% mohair).

Silk Garden 1.75oz/50g; 110yds/100m: Luxurious silk, mohair, and lamb's wool combine

in a veritable garden of fibers (45% silk, 45% mohair, 10% lamb's wool). Loosely plied strands take dyes differently, adding a rustic touch to the elegant silken sheen.

Silk Garden Solo 1.75oz/50g; 110yds/100m: Silk Garden's solid cousin features the same fiber content (45% silk, 45% mohair, 10% lamb's wool), this time in jewel and neutral tones, some flecked with tiny bursts of color.

Silk Garden Sock 3.5oz/100g; 328yds/300m: The fast-stripping colorways of Silk Garden's littlest sister add depth to lace and fine-weight garments. A generous strand of nylon strengthens socks (40% wool, 25% silk, 25% nylon, 10% mohair).

Silk Garden Sock Solo 3.5oz/100g; 328yds/300m: Silk Garden Sock's solid cousin features the same fiber content (40% wool, 25% silk, 25% nylon, 10% mohair) in jewel and neutral tones, some flecked with tiny bursts of color.

Tabi 5.25oz/150g; 410yds/375m: It's named after the traditional *tabi* socks with a split toe, worn with sandals, but this DK-weight yarn (65% wool, 35% polyamide) can do so much—socks, shawls, hats, mittens, sweaters, and more.

Tsubame 7oz/200g; 656yds/600m: Named for the swallow, a symbol of fidelity and good luck, this loosely plied silk blend (50% silk, 25% wool, 25% polyamide) adds wool for strength and polyamide for the perfect hand.

Tsuido 7oz/200g; 350yds/320m: Japanese for "tweed," Tsuido is a nubby, bulky-weight, semisolid yarn (100% wool) scattered with pleasing pops of color.

1 Shawl Collar Jacket



Sized for Small (Medium, Large, 1X, 2X, 3X). Shown in size Small on pages 9 and 10.

●●●○ INTERMEDIATE

Finished Measurements

- Bust 34 (38, 42, 46, 50, 54)"/86.5 (96.5, 106.5, 117, 127, 137)cm
- Length 25 (25½, 26½, 27, 28, 28½)"/63.5 (64.5, 67.5, 68.5, 71, 72)cm
- Upper arm 13 (14, 15, 16, 17, 18)"/33 (35.5, 38, 40.5, 43, 45.5)cm

Materials

- 4 (4, 5, 5, 6, 6) cakes of Noro/KFI *Tsuido* in #8
- One pair each sizes 9 and 10 (5.5 and 6mm) needles OR SIZE TO OBTAIN GAUGE
- One size 9 (5.5mm) circular needle, 32"/80cm long
- Six 1"/25mm buttons
- Stitch holders

Gauge

15 sts and 22.5 rows to 4"/10cm over St st using size 10 (6mm) needles..
TAKE TIME TO CHECK GAUGE.

Back

With larger needles cast on 77 (85, 93, 99, 107, 115) sts. Work in k1, p1 rib for 7½"/19cm, end with a RS row. Knit next row on WS for garter st ridge. Cont in St st (k on RS, p on WS) and work even for 2 (2, 4, 4, 6, 6) rows, end with a WS row.

Shape sides

Next (dec) row (RS) K1, ssk, k to last 3 sts, k2tog, k1—2 sts dec'd.

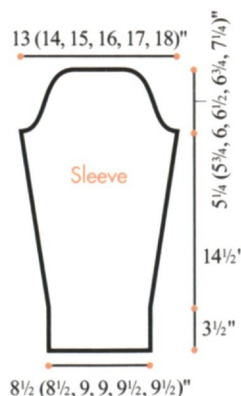
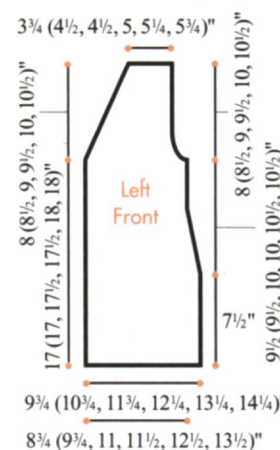
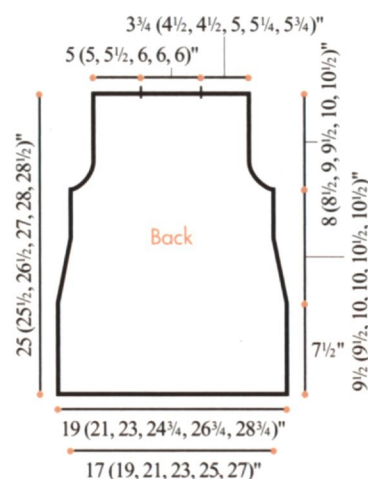
Rep dec row every 6th row 5 times more—65 (73, 81, 87, 95, 103) sts.

Work even until piece measures 17 (17, 17½, 17½, 18, 18)"/43 (43, 44.5, 44.5, 45.5, 45.5)cm from beg, end with a WS row.

Shape armholes

Bind off 4 (5, 6, 6, 6, 7) sts at beg of next 2 rows, then 2 (2, 2, 2, 3, 3) sts at beg of next 2 rows.

Next (dec) row (RS) K1, ssk, k to last 3 sts, k2tog,



k1—2 sts dec'd.

Purl next row.

Rep last 2 rows 2 (3, 4, 5, 6, 7) times more—47 (51, 55, 59, 63, 67) sts.

Work even until armhole measures 8 (8½, 9, 9½, 10, 10½)"/20.5 (21.5, 23, 24, 25.5, 26.5)cm, end with a WS row.

Bind off.

Pocket linings (make 2)

With smaller needles, cast on 18 (18, 20, 20, 22, 22) sts.

Work in St st for 5½"/14cm, end with a WS row. Place sts on holder.

Left Front

With larger needles, cast on 39 (43, 47, 49, 53, 57) sts.

Work in k1, p1 rib for 7½"/19cm, end with a RS row. Knit next row on WS for garter st ridge.

Join pocket lining

Next row (RS) K12 (14, 15, 16, 17, 19), place next 18 (18, 20, 20, 22, 22) sts on holder for pocket ribbing, k18 (18, 20, 20, 22, 22) sts from pocket lining holder, k9 (11, 12, 13, 14, 16).

Beg with a purl row, cont in St st for 1 (1, 3, 3, 5, 5) rows, end with a WS row.

Shape side

Next (dec) row (RS) K1, ssk, k to end—1 st dec'd. Rep dec row every 6th row 5 times more—33 (37, 41, 43, 47, 51) sts.

Work even until piece measures same length as back to underarm, end with a WS row.

Shape neck and armhole

Dec 1 st from neck edge (end of RS row) on next row, then every 4th row 8 (7, 9, 8, 7, 6) times more, then every 6th 1 (2, 1, 2, 3, 4) times, AT SAME TIME, shape armhole at side edge same as back.

When all shaping has been completed, work even on 14 (16, 17, 18, 20, 22) sts until piece measures same length as back to shoulder, end with a WS row. Bind off.

Right Front

Work as for left front to join pocket lining.

Join pocket lining

Next row (RS) K9 (11, 12, 13, 14, 16), place next 18 (18, 20, 20, 22, 22) sts on holder for pocket ribbing, k18 (18, 20, 20, 22, 22) sts from pocket lining holder, k12 (14, 15, 16, 17, 19).

Beg with a purl row, cont in St st for 1 (1, 3, 3, 5, 5) rows, end with a WS row.

Shape side

Next (dec) row (RS) K to last 3 sts, k2tog, k1—1 st dec'd.

Rep dec row every 6th row 5 times more—33 (37, 41, 43, 47, 51) sts.

Cont same as left front, reversing armhole shaping (binding off at beg of WS rows and dec at end of RS rows) and neck shaping (dec at beg of RS rows).

Sleeves

With larger needles, cast on 35 (35, 37, 37, 39, 39) sts. Work in k1, p1 rib for 3½"/9cm, end with a RS row. Knit next row on WS for garter st ridge. Cont in St st and inc 1 st each side every 4th row 0 (0, 1, 7, 9, 15) times, every 6th row 0 (8, 9, 5, 4, 0) times, every 8th row 7 (1, 0, 0, 0, 0) times—49 (53, 57, 61, 65, 69) sts.

Work even until piece measures 18"/45.5cm from beg, end with a WS row.

Shape cap

Bind off 4 (5, 6, 6, 6, 7) sts at beg of next 2 rows, 2 (2, 2, 2, 3, 3) sts at beg of next 2 rows.

Next (dec) row (RS) K1, ssk, k to last 3 sts, k2tog, k1—2 sts dec'd.

Rep dec row every other row 1 (2, 3, 4, 5, 6) times more, every 4th row 5 times. Bind off 3 sts at beg of next 2 rows. Bind off rem 17 (17, 17, 19, 19, 19) sts.

Finishing

Block pieces to measurements. Sew shoulder seams.

Pocket ribbing

With RS facing and smaller needles, place 18 (18, 20, 20, 22, 22) sts on holder to LH needle. Join yarn and work in rib pat as established for 4 rows. Bind off loosely in rib pat.

Sew pocket lining in place on WS. Sew side edges of pocket ribbing in place on RS.

Buttonband

With RS facing and larger needles, pick up and k67 (69, 73, 75, 79, 81) sts evenly spaced along left front edge.

Work in k1, p1 rib for 7 rows.

Bind off loosely in rib.

Place markers for 6 buttons along band, with the first 1"/2.5cm from lower edge, the last ¾"/2cm below neck edge and the others spaced evenly between.

Buttonhole band

With RS facing and larger needles, pick up and k67 (69, 73, 75, 79, 81) sts evenly spaced along right front edge.

Work in k1, p1 rib for 3 rows.

Next (buttonhole) row (RS) *Work rib to marker, bind off next 2 sts; rep from * 5 times more, work

to end.

Next row Work in rib, casting on 2 sts over bound-off sts. Work 2 rows more.

Bind off loosely in rib pat.

Shawl collar

With RS facing and larger needles, pick up and k4 sts across top edge of buttonhole band, 35 (37, 39, 41, 43, 45) sts along right front edge to shoulder seam, 19 (19, 21, 21, 23, 23) sts along back neck edge to shoulder seam, 35 (37, 39, 41, 43, 45) sts along left front edge to buttonband, then 4 sts across top edge of buttonband—97 (101, 107, 111, 117, 121) sts.

Work in k1, p1 rib for 1 row. Cont in rib pat, AT SAME TIME, dec 1 st each side every row 30 (31, 32, 33, 34, 35) times.

Bind off rem 37 (39, 43, 45, 49, 51) sts loosely in rib pat.

Set in sleeves. Sew side and sleeve seams. Sew on buttons. ■

2 Turtleneck Pullover



Sized for Small (Medium, Large, 1X, 2X, 3X). Shown in size Small on pages 12 and 13.

●●●○ INTERMEDIATE

Finished Measurements

- Bust 36 (40, 44, 48, 52, 56)"/91.5 (101.5, 111.5, 122, 132, 142)cm
- Length 22 (22½, 22¾, 23½, 24, 24½)"/55.5 (57.5, 58, 59.5, 61, 62)cm
- Upper arm 15½ (16, 16½, 17½, 18, 19)"/39 (41, 42, 44, 46, 48)cm

Materials

- 3 (3, 4, 4, 5, 5) cakes of Noro/KFI *Tabi* in #6
- One pair size 8 (5mm) needles, 32"/80cm long OR SIZE TO OBTAIN GAUGE
- Size 8 (5mm) circular needle, 16"/40cm long
- Stitch markers
- Stitch holders

Gauge

16 sts and 24 rows to 4"/10cm over St st using size 8 (5mm) needles.

TAKE TIME TO CHECK GAUGE.

Back

Cast on 72 (80, 88, 96, 104, 112) sts.

Beg k1, p1 rib

Row 1 (RS) *K1, p1; rep from * to end.

Rep last row for k1, p1 rib for 3 rows more.

Work in St st (k on RS, p on WS) until piece measures 14¼ (14½, 14½, 14¾, 15, 15)"/36 (37, 37, 37.5, 38, 38)cm from beg, end with a WS row.

Shape armhole

Bind off 8 (10, 11, 13, 15, 16) sts at beg of next 2 rows—56 (60, 66, 70, 74, 80) sts.

Cont in St st until armhole measures 6¾ (7, 7¼, 7¾, 8, 8½)"/17 (18, 18.5, 19.5, 20.5, 21.5)cm, end with a WS row.

Shape neck

Next row (RS) Work 20 (21, 24, 25, 27, 29) sts, join 2nd ball of yarn and bind off center 16 (18, 18, 20, 20, 22) sts, work to end.

Working both sides at once, bind off 5 sts from each neck edge once, then dec 1 st at each neck edge every other row twice.

Work even, if necessary, until armhole measures 7¾ (8, 8¼, 8¾, 9, 9½)"/19.5 (20.5, 21, 22, 23, 24)cm.

Place rem 13 (14, 17, 18, 20, 22) sts each side on holders for shoulders.

FRONT

Work as for back until armhole measures 4¾ (5, 5¼, 5¾, 6, 6½)"/12 (13, 13.5, 14.5, 15.5, 16.5)cm, end with a WS row.

Shape neck

Next row (RS) Work 23 (24, 27, 28, 30, 32) sts, join 2nd ball of yarn and bind off center 10 (12, 12, 14, 14, 16) sts, work to end.

Working both sides at once, bind off 3 sts from each neck edge once, 2 sts twice, then dec 1 st at each neck edge every other row 3 times.

Work even until armhole measures 7¾ (8, 8¼, 8¾, 9, 9½)"/19.5 (20.5, 21, 22, 23, 24)cm.

Place rem 13 (14, 17, 18, 20, 22) sts each side

2) Back has shirt tail hem and is longer than front.

Back

With larger needle cast on 80 (88, 96, 104, 112, 120) sts.

Purl 1 row.

Shirt tail hem

Working in St st and stripe pat, cast on 2 sts at beg of next 2 rows—84 (92, 100, 108, 116, 124) sts.

Inc row (RS) K2, M1, k to last 2 sts M1, k2—2 sts inc'd.

Cont in St st and stripe pat, and rep inc row every other row twice more—90 (98, 106, 114, 122, 130) sts.

Purl 1 row.

Place markers each side of this row.

Beg body section and A-line shaping

Beg with a RS row, work in St st and stripe pat for 10 rows.

Dec row (RS) K2, ssk, k to last 4 sts, k2tog, k2—2 sts dec'd.

Cont in St st and stripe pat, and rep dec row every 10th row 5 times more—78 (86, 94, 102, 110, 118) sts.

Work even in St st and stripe pat until piece

measures 13½"/34.5cm from marked row, end with a WS row.

Armhole shaping

Bind off 5 (6, 6, 7, 8, 9) sts at beg of next 2 rows.

Dec row (RS) K2, ssk, k to last 4 sts, k2tog, k2—2 sts dec'd.

Rep dec row every other row 2 (4, 6, 8, 10, 11) times, then every 4th row twice more—58 (60, 64, 66, 68, 72) sts.

Work even in St st and stripe pat until armhole measures 7½ (8, 8½, 9, 9½, 10)"/19 (20.5, 21.5, 23, 24, 25.5)cm, end with a WS row.

Shoulder shaping

Bind off 5 (5, 6, 6, 6, 7) sts at beg of next 4 rows, 5 (6, 5, 6, 6, 6) sts at beg of next 2 rows.

Bind off rem 28 (28, 30, 30, 32, 32) sts for back neck.

Front

With larger needle cast on 90 (98, 106, 114, 122, 130) sts.

Purl 1 row.

Beg body section and A-line shaping

Beg with a RS row, work in St st and stripe pat for 10 rows.

Dec row (RS) K2, ssk, k to last 4 sts, k2tog, k2—2 sts dec'd.

Cont in St st and stripe pat, and rep dec row every 10th row 5 times more—78 (86, 94, 102, 110, 118) sts.

Work even in St st and stripe pat until piece measures 13½"/34.5cm from beg, end with a WS row.

Armhole shaping

Bind off 5 (6, 6, 7, 8, 9) sts at beg of next 2 rows.

Dec row (RS) K2, ssk, k to last 4 sts, k2tog, k2—2 sts dec'd.

Rep dec row every other row 2 (4, 6, 8, 10, 11) times, then every 4th row twice more—58 (60, 64, 66, 68, 72) sts.

Work even in St st and stripe pat until armhole measures 6½ (7, 7½, 8, 8½, 9)"/16.5 (18, 19, 20.5, 21.5, 23)cm, end with a WS row.

Neck and shoulder shaping

Next row (RS) Work 18 (19, 20, 21, 21, 23) sts in pat, join 2nd skein of yarn and bind off center 22 (22, 24, 24, 26, 26) sts, work to end.

Working both sides at once, dec 1 st at each neck edge every other row 3 times, AT THE SAME TIME, when armhole measures 7½ (8, 8½, 9, 9½, 10)"/19 (20.5, 21.5, 23, 24, 25.5)cm, end with a WS row and bind off 5 (5, 6, 6, 6, 7) sts from

each shoulder edge twice, then 5 (6, 5, 6, 6, 6) sts once.

Sleeves

With larger needle cast on 32 (32, 34, 36, 36, 38) sts.

Purl 1 row on WS.

Beg shaping

Working in St st and stripe pat, work as foll:

Inc row (RS) K2, M1, k to last 2 sts M1, k2—2 sts inc'd.

Cont in St st and stripe pat, rep inc row every other row 0 (0, 0, 2, 5, 6) times, then every 4th row 10 (12, 13, 12, 11, 11) times more—54 (58, 62, 66, 70, 74) sts.

Work even in St st and stripe pat until piece measures 10 (10½, 11, 11½, 12, 12½)"/25.5 (26.5, 28, 29, 30.5, 31.5)cm from beg, end with a WS row.

Cap shaping

Bind off 5 (6, 6, 7, 8, 9) sts at beg of next 2 rows.

Dec row (RS) K2, ssk, k to last 4 sts, k2tog, k2—2 sts dec'd.

Cont in St st and stripe pat, rep dec row every other row 12 (13, 14, 17, 18, 19) times, then every row 5 (5, 5, 3, 3, 3) times more.

Bind off rem 8 (8, 10, 10, 10, 10) sts.

Finishing

Block to measurements. Sew shoulder seams. Set in sleeves. Sew side and sleeve seams.

Lower edge trim

With RS facing and longer, smaller needle, pick up and k 8 sts along right side edge of back shirt tail hem, 8 sts along left side edge of back shirt tail hem, 88 (96, 104, 112, 120, 128) sts along front cast-on edge—188 (204, 220, 236, 252, 268) sts.

Bind off all sts on foll round.

Neckband

With RS facing and shorter, smaller needle, pick up and k 28 (28, 30, 30, 32, 32) sts along back neck edge, 7 sts along shaped left front neck edge, 22 (22, 24, 24, 26, 26) sts along center front neck edge, 7 sts along shaped right front neck edge—64 (64, 68, 68, 72, 72) sts.

Bind off all sts on foll round. ■

5 Mitered Jacket



Sized for Small/Medium (Large, 1X, 2X). Shown in size Small/Medium on pages 18 and 19.

●●●●● COMPLEX

Finished Measurements

- Bust 40 (44, 48, 52)"/101.5 (111.5, 122, 132)cm
- Length 21 (23, 25, 27)"/53.5 (58.5, 63.5, 68.5)cm
- Upper arm 19 (20, 22, 23)"/48 (50.5, 56, 58.5)cm

Materials

- 3 (4, 4, 5) cakes of Noro/KFI Ito in #21
- One pair size 8 (5mm) needles OR SIZE TO OBTAIN GAUGE
- Size 8 (5mm) circular needle, 16"/40cm long
- One size 8 (5mm) circular needle, 32"/80cm long
- Two size 8 (5mm) dpn (double-pointed needles)
- Approx 1yd/1m of worsted weight scrap yarn
- Stitch markers
- Stitch holder or large safety pin

Gauge

15 sts and 28 rows to 4"/10cm over garter st using size 8 (5mm) needles.

TAKE TIME TO CHECK GAUGE.

Mitered Square

Row 1 (WS) Sl first st, purl to end.

Row 2 Sl first st, k to 2 sts before marker, ssk, sl marker, k1, k2tog, k to last st, p last st.

Row 3 Sl first st, knit to 1 st before marker, p1, sl marker, k to last st, p last st.

Row 4 Rep row 2.

Rep rows 1–4 until 3 sts rem.

Last row (RS) S2KP, fasten off last and cut yarn.

I-Cord

With dpn, cast on 3 sts.

***Next row (RS)** K3. Slide sts to other end of needle to work next row from RS.

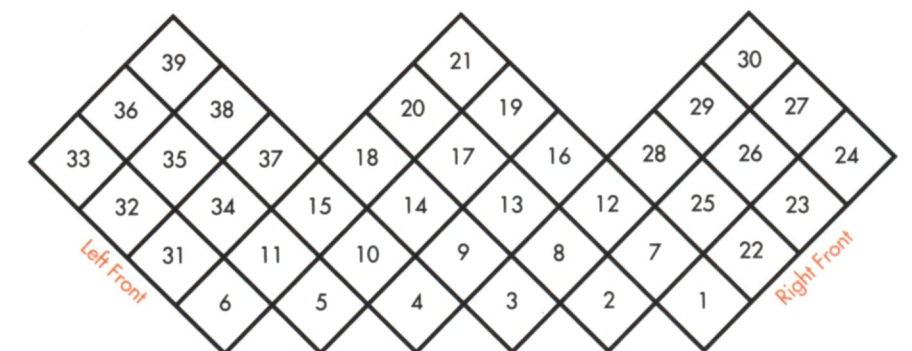
Rep from * until cord is desired length.

Attached I-Cord

With dpn, cast on 3 sts. **Next row (RS)** K3, *with left tip of RH needle, go under both legs of edge st and pull up a loop. Check that tension is even and that loop is next to other sts. Slide sts to other end of needle, k2, k2tog; rep from * until cord is desired length.

Back

Foundation I-cord Using scrap yarn and dpn, cast on 3 sts. Knit 4 rows. Cut scrap yarn. Change to main yarn. Following I-cord directions, work approx 3 feet/2.75 meters of I-cord. Remove sts from needle and place on safety pin. When more I-cord is needed, remove safety pin, place sts on dpn and cont making I-cord.



Square 1

From the cast-on edge, count 45 (57, 63, 69) rows in the I-cord. Beg in row 46 (58, 64, 70), use the straight needle to pick up and knit 14 (18, 20, 22) sts. Place marker. Pick up and knit 15 (19, 21, 23) more sts. When you pick up the sts, be sure to go under both legs of the I-cord st and to follow the same column of sts along the length of the I-cord. Follow Mitered Square directions.

Squares 2 through 6

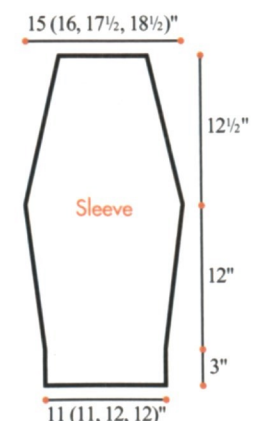
Leave 1 st in I-cord between square just completed and beginning of pick up for this square. Pick up and knit as for Square 1. Work Mitered Square.

Square 7

With RS facing, pick up and knit 14 (18, 20, 22) sts down left side of Square 1. Go under both legs of edge sts as you pick up. Place marker. Pick up and knit 1 st in I-cord. Pick up and knit 14 (18, 20, 22) sts up right side of Square 2. Work Mitered Square.

Squares 8 through 11

Work as for Square 7, working between Squares already worked, until row is complete. Work in ends as you go.



Square 12

With RS facing, pick up and knit 14 (18, 20, 22) sts down left side of Square 7. Go under both legs of edge sts as you pick up. Place marker. Pick up and knit 1 st in center st of Square 2. Pick up and knit 14 (18, 20, 22) sts up right side of Square 8. Work Mitered Square.

Squares 13–21

Cont working Mitered squares in this way until row is complete. Work rem rows in this way until Back section is complete.

Right Front Square 22

With RS facing, count 15 (19, 21, 23) rows in I-cord going to the right of Square 1. Pick up and knit 14 (18, 20, 22) sts in I-cord. Place marker, pick up and knit 1 st in I-cord. Pick up and knit 14 (18, 20, 22) sts along left edge of Square 1. Work Mitered Square. Work Squares 23 and 24 in this way, beg to pick up sts 15 (19, 21, 23) sts to the right of the Square last worked.

Squares 25–30

Work same as Square 12.

Left Front Square 31

Pick up and knit 14 (18, 20, 22) sts down left side of Square 6. Place marker. Pick up and knit 15 (19, 21, 23) sts in I-cord. Work Mitered Square. Work Squares 32 and 33 in this way.

Squares 34–39

Work same as Square 12.

SLEEVES

Cast on 10 sts for cuff. *Sl first st, k to last st, p last st; rep from * for 68 (68, 72, 72) rows. Bind off.

I-cord trim

With dpn, work Attached I-cord to work trim on one long edge of cuff. With RS facing, turn cuff and work Attached I-cord along other long edge.

Lower sleeve

With RS facing, pick up and knit 34 (34, 36, 36) sts in one I-cord edge, working as you did for the first row of Mitered Squares. Work even in garter st for 4 rows, slipping first st and purling last st as before.

Work 7 (7, 5, 3) more rows of garter st.

Inc row K2, M1, knit to last 2 sts, M1, k2—2 sts inc'd.

Rep inc row every 8th (8th, 6th, 6th) row 8 (6, 9, 6) times more, then every 4th row 2 (6, 5, 10) times—56 (60, 66, 70) sts.

Work even until piece measures 15"/38cm from beg, end with a WS row. Place a marker each side of last row.

Cap shaping

Work 8 (2, 0, 0) rows even.

Dec row (RS) Sl 1, k1, ssk, k to last 4 sts, k2tog, k1, p1—2 sts dec'd.

Rep dec row every 8th (8th, 6th, 6th) row 5 (2, 15, 11) times, then every 6th (6th, 0, 4th) row 7 (12, 0, 6) times—30 (30, 34, 34) sts.

Bind off.

FINISHING

Block to measurements. Sew sleeve seams.

Joining left sleeve to body

Position sleeve on top of body section. Align edge sts. With circular needle, pull up a loop going under both legs of the sleeve edge stitch and both legs of the body edge stitch. Continue pulling up loops, working down the body section and up the left front section. Adjust tension of loops if necessary. Cut yarn.

Begin I-cord at top of left front section. With dpn, cast on 3 sts. Knit across. *Slide sts to other end of needle. Knit 2 sts, knit the next st tog with the first loop on the circular needle. * Rep between *'s until all loops have been worked. Knit 3. Bind off.

Joining right sleeve to body

Position sleeve on top of right front section. Align edge sts. Pull up loops as for left sleeve joining. Cut yarn. Begin working I-cord at top of Body section. Work as for left sleeve joining.

Body I-cord trim

Beg at lower corner of right front, work Attached I-cord trim. When you come to the top of the sleeves, pick up loops evenly, then continue down the left front. Bind off.

Band

With circular needle, pick up and knit 1 st in each row of I-cord as you did for the first row of squares. *Slip first st, k to last st, p last st. * Rep between *'s for 9 more rows. Leave sts on circular needle.

I-cord edging

Remove scrap yarn from first length of I-cord and transfer sts to dpn. Work Attached I-cord across edge of band in the same way as for the cuff. Work 2 rows of unattached I-cord to go around the corner of the band. *Slide sts to opposite end of needle. Knit 2 sts. Knit next st tog with loop from circular needle. * Rep between *'s until all loops have been worked. Work 2 rows of unattached I-cord to go around the corner of the band. Cont across to meet

the other end of the foundation I-cord. Join ends. ■

6 Raglan Pullover



Sized for Small (Medium, Large, 1X, 2X, 3X). Shown in size Small on page 22.

●●●○ INTERMEDIATE

Finished Measurements

- Bust 34 (38, 42, 47, 51½, 56½)/86.5 (96.5, 106.5, 119.5, 130.5, 143.5)cm
- Length 22 (22½, 23, 23½, 24½, 25½)/56 (57.5, 58.5, 60, 62.5, 65)cm
- Upper arm 13 (14¼, 14¾, 15½, 16, 17¼)/33 (36, 37.5, 39.5, 40.5, 44)cm

Materials

- 5 (5, 6, 6, 7, 8) cakes of Noro/KFI Kanzashi in #6
- Small amount of smooth DK weight yarn for seaming
- One pair each sizes 9 and 10 (5.5 and 6mm) needles OR SIZE TO OBTAIN GAUGE
- One each sizes 9 and 10 (5.5 and 6mm) circular needles, 16"/40cm long
- Stitch markers

Gauge

13 sts and 20 rows to 4"/10cm over St st using size 9 (5.5mm) needles.

TAKE TIME TO CHECK GAUGE.

Notes

- 1) If desired, begin front and back at same place in color sequence to match stripes at side seam. The same technique can be used to make matching sleeves. When joining second ball at front neck, join the same color to match sides of front neck.

- 2) A smooth DK weight yarn can be used for easier seaming.

Back

With larger needles, cast on 56 (64, 68, 76, 84, 92) sts.

Row 1 (RS) K1, *p2, k2; rep from * to last 3 sts, p2, k1.

Row 2 P1, *k2, p2; rep from * to last 3 sts, k2, p1. Rep last 2 rows once more, dec 0 (2, 0, 0, 0, 0) sts on last row—56 (62, 68, 76, 84, 92) sts.

Change to smaller needles and work in St st (k on RS, p on WS) until piece measures 12"/30.5cm from beg, end with a WS row.

Raglan armhole shaping

Bind off 4 (4, 4, 5, 5, 7) sts at beg of next 2 rows—48 (54, 60, 66, 74, 78) sts.

Work 2 rows even.

Dec row (RS) K1, ssk, k to last 3 sts, k2tog, k1—2 sts dec'd.

Rep dec row every 4th row 6 (5, 4, 2, 0, 0) times, then every other row 4 (8, 12, 17, 23, 25) times more—26 sts.

Work 3 (1, 1, 1, 1, 1) row(s) even.

With larger needle, bind off.

Front

Work as for back to armhole shaping.

Raglan armhole shaping

Bind off 4 (4, 4, 5, 5, 7) sts at beg of next 2 rows—48 (54, 60, 66, 74, 78) sts.

Work 2 rows even.

Dec row (RS) K1, ssk, k to last 3 sts, k2tog, k1—2 sts dec'd.

Rep dec row every 4th row 6 (6, 4, 2, 0, 0) times more, then every other row 0 (3, 8, 13, 19, 21) times—34 sts.

Work 1 row even. Mark center 10 sts.

Neck shaping

Next row (RS) K1, ssk, k to center marked sts, join 2nd ball of yarn and bind off center 10 (12, 12, 12, 12) sts, k to last 3 sts, k2tog, k1—11 sts rem each side.

Working both sides at once, dec 1 st at each raglan edge every other row 3 times more, AT SAME TIME, dec 1 st at each neck edge every row 5 times, then every other row once—2 sts rem each side.

Work 2 rows even.

With larger needle, bind off rem sts each side.

Sleeves

With larger needles, cast on 32 (32, 32, 34, 34, 34) sts. Work 4 rows in St st.

Dec row (RS) K6, ssk, k to last 8 sts, k2tog, k6—30 (30, 30, 32, 32, 32) sts.

Change to smaller needles.

Work 11 rows in St st.

Inc row (RS) K1, M1, k to last st, M1, k1—2 sts inc'd.

Cont in St, st, rep inc row every 12th (10th, 8th, 8th, 8th, 6th) row 5 (7, 8, 8, 9, 11) times more—42 (46, 48, 50, 52, 56) sts.

Work even in St st until piece measures 19"/48cm from beg (with cuff unrolled).

Raglan shaping

Bind off 4 (4, 4, 5, 5, 7) sts at beg of next 2 rows—34 (38, 40, 40, 42, 42) sts.

Work 2 rows even.

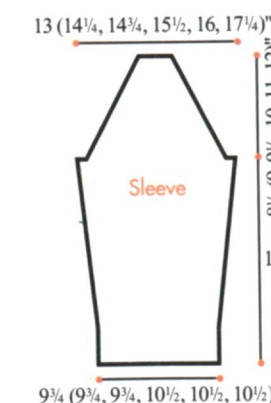
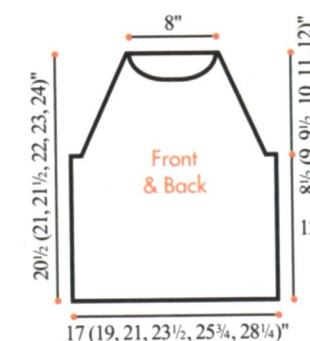
Dec row (RS) K1, ssk, k to last 3 sts, k2tog, k1—2 sts dec'd.

Rep dec row every 4th row 6 (5, 6, 7, 8, 10) times, then every other row 5 (8, 8, 7, 7, 5) times—10 sts.

Work 1 row even. With larger needle, bind off.

Finishing

With smooth DK weight yarn, sew raglan sleeve



caps into raglan armholes. Sew side and sleeve seams.

Neckband

With smaller circular needle and RS facing, beg at right back raglan seam, pick up and k 24 sts across back neck, 11 sts across left sleeve, 32 sts across front neck, 11 sts across right sleeve—78 sts. Join and place marker for beg of rnd. Knit 3 rnds.

Change to larger circular needle and cont in St st (knit every rnd) until edging measures 2"/5cm from pick up rnd.

Bind off. ■

7 Raglan Cardigan



Sized for Small (Medium, Large, X-Large, XX-Large). Shown in size Small on page 23.

●●●● COMPLEX

Finished Measurements

- Bust (closed) 38 (40, 42, 44, 46½)/96.5 (101.5, 106.5, 111.5, 118)cm
- Length 28½ (28¾, 29¼, 30, 30½)/72.5 (73, 74.5, 76, 77.5)cm
- Upper arm 14 (14¾, 15½, 16¾, 17¾)/35.5 (37.5, 39.5, 42.5, 45)cm

Materials

- 3 (3, 3, 4, 4) cakes of Noro/KFI Tsubame in #11
- One pair each sizes 6, 7 and 8 (4, 4.5 and 5mm) needles OR SIZES TO OBTAIN GAUGES
- One each sizes 6, 7 and 8 (4, 4.5 and 5mm) circular needles, each approx 29"/74cm long
- One extra large covered hook and edge closure

- Stitch holders
- Stitch markers

Gauges

- 21 sts and 28 rows = 4"/10cm over St st using size 7 (4.5mm) needles;
- 21 sts and 40 rows = 4"/10cm over slip st pat using ball A and ball B and size 8 (5mm) needles.

TAKE TIME TO CHECK GAUGES.

Notes

- 1) When working slip st pat stripes, use 8 (5mm) needles and work with a strand from one ball (A) for 2 rows then a strand from a 2nd ball (B) for 2 rows. This gives variation to colors in the striping.
- 2) When working St st sections, use size 7 (4.5mm) needles and work from one ball only, either ball A or B, for desired color.
- 3) Pieces are made flat to the raglan armholes, then joined to work the raglan shaping in one piece to the end of the neck.

Back

With size 6 (4mm) needles and ball A, cast on 119 (123, 127, 135, 143) sts.

Row 1 (RS) K1, *p1, k1; rep from * to end.

Row 2 P1, *k1, p1; rep from * to end.

Rep these 2 rows for 9 rows more.

Dec row (WS) [Rib 14 (14, 15, 16, 17), k2tog] 7 times, rib 7 (11, 8, 9, 10)—112 (116, 120, 128, 136) sts.

Beg pattern stitch

Change to size 7 (4.5mm) needles.

Row 1 (RS) Knit.

Row 2 (WS) Purl.

Rows 3–16 Rep (rows 1 and 2) 7 times.

Dec row 17 (RS) K1, k2tog, k to last 3 sts, SKP, k1—110 (114, 118, 126, 134) sts.

Row 18 Purl.

Change to size 8 (5mm) needles.

Row 19 (RS) With color A, k1, *sl 2 purlwise wyif, k2; rep from *, end k1.

Row 20 With color A, p1, *p2, sl 2 purlwise wyib; rep from *, end p1.

Row 21 With color B, rep row 19.

Row 22 With color B, rep row 20.

Rows 23–46 Rep (rows 19–22) 6 times more.

Rows 47 and 48 Rep rows 19 and 20.

Row 49 (RS) With B, k1, k2tog, k to last 3 sts, SKP, k1—2 sts dec'd.

Row 50 (WS) With B, purl.

Change to size 7 (4.5mm) needles and cut B yarn.

Rep rows 3–50 twice more—100 (104, 108, 116, 124) sts.

Note After this, work in pat st foll rows 3–50 but do not work the dec rows.

Work even until piece measures approx 19"/48cm from beg.

Shape raglan armhole

Bind off 5 (5, 5, 6, 6) sts at beg of next 2 rows—90 (94, 98, 104, 112) sts.

Sl sts to size 7 (4.5mm) circular needle in order to hold in place for working the raglan shaping when other pieces are completed.

Note Make the sleeves next.

Left Sleeve

With size 6 (4mm) needles, cast on 51 (55, 59, 63, 69) sts.

Work in k1, p1 rib for 41 rows.

Inc row (WS) [Pfb, p4] 10 (10, 10, 12, 12) times, pfb, p0 (4, 8, 2, 8)—62 (66, 70, 76, 82) sts.

Piece measures approx 5½"/14cm from beg.

Beg pattern stitch

Change to size 7 (4.5mm) needles.

Then, work rows 1–48 of pat st as on back (do not work the dec rows) for 6 rows.

Inc 1 st each side of next row, then rep inc row every 8th row once, every 14th row twice, every 8th row twice more—74 (78, 82, 88, 94) sts.

Work even until piece measures approx 17½"/44.5cm from beg, ending on the same pat st row as on the back at the armhole.

Shape raglan cap

Bind off 5 (5, 5, 6, 6) sts at beg of next 2 rows—64 (68, 72, 76, 82) sts.

Sl sts to size 7 (4.5mm) circular needle in left sleeve position with the sts on back.

Right Sleeve

Work as for left sleeve and sl the sts to other end of size 7 (4.5mm) circular needle in right sleeve position with the sts on back.

Pocket Lining (make 2)

With size 7 (4.5mm) needles, cast on 36 sts. Work in St st for 5½"/14cm or 38 rows. Leave these sts on hold.

Left Front

With size 6 (4mm) needles, cast on 55 (57, 59, 63, 67) sts.

Work in k1, p1 rib for 11 rows.

Dec row (WS) Work in rib dec'ing 3 sts evenly spaced—52 (54, 56, 60, 64) sts.

Beg pattern stitch

Change to size 7 (4.5mm) needles.

Rows 1–16 Work in St st.

Dec row 17 (RS) K1, k2tog, k to end—51 (53, 55, 59, 63) sts.

Row 18 Purl.

Change to size 8 (5mm) needles.

Row 19 (RS) With color A, k1, *sl 2 purlwise wyif, k2; rep from *, end k2 (0, 2, 2, 2).

Row 20 (WS) With color A, p2 (0, 2, 2, 2), *p2, sl 2 purlwise wyib; rep from *, end p1.

Row 21 With color B, rep row 19.

Row 22 With color B, rep row 20.

Rows 23–46 Rep (rows 19–22) 6 times more.

Rows 47 and 48 Rep rows 19 and 20.

Change to size 7 (4.5mm) needles and cut B yarn.

Join pocket lining

Next row (RS) K1, k2tog, k6 (8, 8, 12, 14), place next 36 sts on a st holder (or strand of waste yarn) and k36 sts of pocket lining sts on holder, k6 (6, 8, 8, 10)—50 (52, 54, 58, 62) sts.

Cont to work as established in the 48—row pat st, AT THE SAME TIME, work only 3 more side seam dec's—47 (49, 51, 55, 59) sts.

When piece measures approx 18"/45.5cm from beg and there are 20 rows (instead of 30 rows) in the sl st section, work neck shaping as foll:

Shape v-neck

Dec row (RS) Work to last 3 sts, k2tog, k1.

Pm to mark this row for beg of v-neck shaping.

Rep this dec row every other row 4 times more—42 (44, 46, 50, 54) sts.

Work 1 row even.

Shape raglan armhole

Change to size 7 (4.5mm) needles.

Next row (RS) Bind off 5 (5, 5, 6, 6) sts, work to end. Purl 1 row.

Sl the 37 (39, 41, 44, 48) sts to the end of the circular needle in place to work the left front.

Pocket Trims

With smaller needles, join yarn to the sts on hold to work first row from the RS.

Row 1 P1, [pfb, p4] 7 times—43 sts.

Work in k1, p1 rib for 5 rows.

Last row K1, *p2tog, rib 4, rep from * 6 times more—36 sts. Bind off.

Right Front

Cast on and work rib as for left front.

Beg pattern stitch

Change to size 7 (4.5mm) needles.

Rows 1–16 Work in St st.

Dec row 17 (RS) K to last 3 sts, SKP, k1—51 (53,

55, 59, 63) sts.

Row 18 Purl.

Change to size 8 (5mm) needles.

Row 19 (RS) With color A, k2 (0, 2, 2, 2), *sl 2 purlwise wyif, k2; rep from *, end k1.

Row 20 With color A, p1, *p2, sl 2 purlwise wyib; rep from *, end p2 (0, 2, 2, 2).

Row 21 With color B, rep row 19.

Row 22 With color B, rep row 20.

Rows 23–46 Rep (rows 19–22) 6 times more.

Rows 47 and 48 Rep rows 19 and 20.

Change to size 7 (4.5mm) needles and cut B yarn.

Join pocket lining

Next row (RS) K6 (6, 8, 8, 10), place next 36 sts on at st holder (or strand of waste yarn) and k36 of pocket lining sts on holder, k6 (8, 8, 12, 14), SKP, k1—50 (52, 54, 58, 62) sts.

Cont to work as established in the 48—row pat st, AT THE SAME TIME, work only 3 more side seam dec's—47 (49, 51, 55, 59) sts.

When piece measures approx 18"/45.5cm from beg and there are 20 rows (instead of 30 rows) in the sl st section, work neck shaping as foll:

Shape v-neck

Dec row (RS) K1, SKP, work to end.

Pm to mark this row for beg of v-neck shaping.

Rep this dec row every other row 4 times more—42 (44, 46, 50, 54) sts.

Work 1 row even.

Shape raglan armhole

Change to size 7 (4.5mm) needles.

Next row (RS) Work even.

Next row (WS) Bind off 5 (5, 5, 6, 6) sts, work to

end of row.

Sl the 37 (39, 41, 44, 48) sts to beg of the sts on circular needle in place to work the yoke on all sts.

Shape Raglan Yoke

Setup row (WS) P36 (38, 40, 43, 47), k1 (for left front), pm; k1, p62 (66, 70, 74, 80), k1 (for left sleeve), pm; k1, p88 (92, 96, 102, 110), k1 (for back), pm; k1, p62 (66, 70, 74, 80), k1 (for right sleeve), pm; k1, p36 (38, 40, 43, 47). There are 292 (308, 324, 344, 372) total sts.

Dec row 1 (RS) K1, SKP (neck dec), *k to 3 sts before the 2 purl sts, k2tog, k1, p2, k1, SKP*; rep between *'s 3 times more, then k to the last 3 sts, k2tog (neck dec), k1—10 sts dec'd.

Row 2 *P to the 2 knit sts, k2; rep from * 3 times more, p to end.

Row 3 (RS) *K to the 2 purl sts, p2; rep from * 3 times more, k to end.

Row 4 Rep row 2.

Rep (rows 1–4) 8 times more.

There are 19 (21, 23, 26, 30) sts in each front, 46 (50, 54, 58, 64) sts in each sleeve, 72 (76, 80, 86, 94) sts in back AND a total of 202 (218, 234, 254, 282) sts.

Dec row 5 (RS) K1, *k the right front sts to the 2 purl sts, p2, k the sleeve sts to the 2 purl sts, p2, then on back, k1, SKP, k to 3 sts before the 2 purl sts, k2tog, k1, p2, k the sleeve sts to the 2 purl sts, p2, k the left front sts to end—2 sts dec'd in the back only.

Row 6 Rep row 2.

Row 7 Rep dec row 1—10 sts dec'd.

Row 8 Rep row 2.

Rep (rows 5–8) 7 (8, 9, 11, 13) times more.

Then work rows 5 and 6 once more—104 (108, 112, 108, 112) sts rem.

Dec row 1 (RS) K1, SK2P, k (if necessary) to the first p2, then p2, k1, SKP, work the 4 placed dec's as before, (except for size XL do not work these 4 dec's), then k to 3 sts before the last p2, k2tog, k1, p2, k if necessary, then k3tog, k1—94 (98, 102, 102, 102) sts.

Row 2 Work even.

Dec row 3 K1, SK2P, p1, work dec as before at each of the (6) sleeve and back placed dec's as established, end p1, k3tog, k1—84 (88, 92, 92, 92) sts.

Row 4 Work even.

Dec row 5 K1, SK2P, [work to 3 sts before the (p2), then k2tog, k1, p2, k1, SKP] twice, work to the last 4 sts, k3tog, k1—76 (80, 84, 84, 84) sts.

Row 6 Work even.

Row 7 Bind off 4 sts, cont to work dec's as before at each of the back armholes and back sleeve edges as before—8 sts dec'd total.

Row 8 Bind off 4 sts, work to end.

Rows 9–12 Rep (rows 8 and 9) twice—40 (44, 48, 48, 48) sts.

Leave sts on hold for working the finishing.

Finishing

Sew side and sleeve seams.

From the RS, with size 6 (4mm) circular needle, pick up and k10 sts along the right front band, 83 sts to the v-neck marker, pm, 76 (81, 84, 89, 92) sts to the back neck, then knit the sts on hold, dec'ing 5 (7, 7, 7, 7) sts evenly spaced, for 35 (37, 41, 41, 41) sts, pick up and k76 (81, 84, 89, 92) sts to the neck marker, pm, 83 sts to the lower band, and 10 sts in the ribbed border—373 (385, 395, 405, 411) sts.

Row 1 (WS) P1, *k1, p1; rep from * to end.

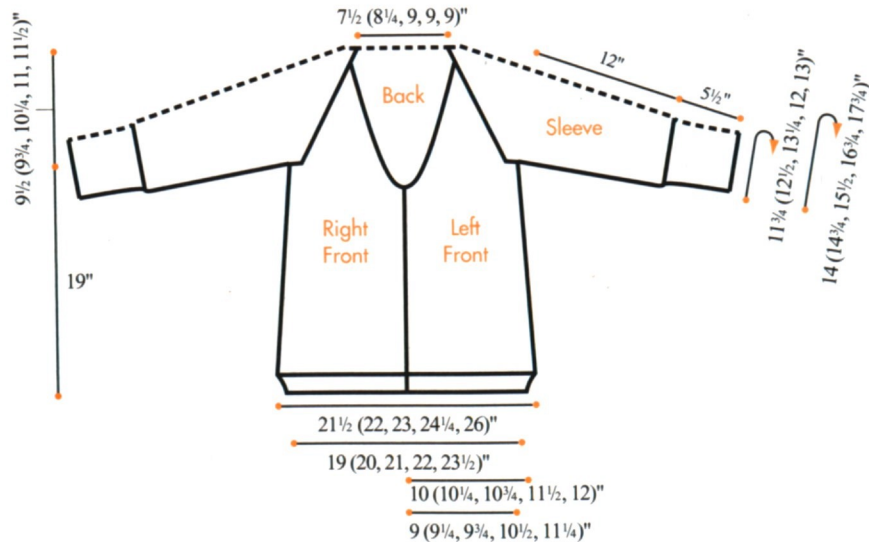
Row 2 (RS) Rib to neck marker, sl marker, inc 1 st in rib, rib to 1 st before next marker, inc 1 st, sl marker, rib to end.

Rows 3–10 Rep (rows 1 and 2) 4 times.

Row 11 Rep row 1.

Bind off in rib.

Sew on the hook and edge closure at beg of the



v-neck edge. ■

8 Raglan Pullover



Sized for Small (Medium, Large, X-large, 1X, 2X). Shown in size Small on pages 24 and 25.

●●●○ INTERMEDIATE

Finished Measurements

- Bust 38 (41, 44, 47, 50½, 54)"/96.5 (104, 111.5, 119, 128, 137)cm
- Length 24 (24½, 25, 25¼, 25½, 25½)"/61 (62.5, 63.5, 64.5, 65, 65)cm
- Upper arm 15 (16½, 18, 19, 20½, 22)"/38 (42, 43, 48, 52, 56)cm

Materials

- 2 (2, 3, 3, 3, 4) cakes of Noro Bachi in #3 (A)
- 1 (1, 1, 2, 2, 2) cakes in #6 (B)
- One pair size 15 (10mm) needles OR SIZE TO OBTAIN GAUGE
- One size 15 (10mm) circular needle, 16"/40cm long
- Stitch markers
- Stitch holders or waste yarn

Gauge

10 sts and 18 rows to 4"/10cm over stripe pat using size 15 (10mm) needles. TAKE TIME TO CHECK GAUGE.

Stripe Pattern

Rows 1, 3 and 5 Knit.
Rows 2, 4 and 6 Purl.
Row 7 K1, *p1, k1; rep from * to end.
Row 8 K the purl and p the k sts.
Rep these 8 rows for stripe pat (rows 7 and 8 are in

seed st).

Note

The front and back of the pullover are worked in stripe pat using color A, the sleeves are worked using color B.

Back

With color A, cast on 47 (51, 55, 59, 63, 67) sts. Work in seed st (rep rows 7 and 8 of pat st) for 4 rows.

Then, beg with row 1, work the 8-row stripe pat until piece measures 14½ (14½, 14½, 14, 14, 13½)"/37 (37, 37, 35.5, 35.5, 34)cm from beg, end with a WS row.

Raglan armhole shaping

Dec row 1 (RS) K2, k2tog, work in pat to last 4 sts, end SKP, k2—2 sts dec'd.

Row 2 P2, work in pat to last 2 sts, end p2.

Row 3 K2, work in pat to last 2 sts, end k2.

Row 4 Rep row 2.

Rep (these 4 rows) 3 (2, 1, 2, 1, 0) time more—39 (45, 51, 53, 59, 65) sts.

Next row Rep dec row 1.

Next row Rep row 2.

Rep (the last 2 rows) 10 (13, 16, 19, 22) times more—17 (17, 17, 19, 19, 19) sts.

Sl these sts to a st holder or strand of waste yarn.

Front

Work same as back, including the raglan armhole shaping, until there are 29 (29, 29, 31, 31, 31) sts. On the last WS row, pm to mark the center 9 (9, 9, 11, 11, 11) sts.

Neck and armhole shaping

Dec row 1 (RS) K2, k2tog, work in pat to the center marked sts, sl these center 9 (9, 9, 11, 11, 11) sts to a st holder (or strand of waste yarn), join a 2nd ball of yarn and work to the last 4 sts, end SKP, k2. Working both sides at once with separate balls of yarn, work as foll:

Row 2 (WS) P2, work to end of first side; on 2nd side, work to last 2 sts, p2.

Row 3 K2, k2tog, work to last 2 sts of first side, k2tog; on 2nd side, SKP, work to last 4 sts, SKP, k2.

Row 4 Rep row 2.

Row 5 Rep row 3—5 sts rem each side.

Row 6 Rep row 2.

Last row K2, p3tog; on 2nd side, p3tog, k2—3 sts rem each side. Sl these sts to small st holders.

Sleeves

With color B, cast on 29 (31, 33, 33, 35, 37) sts. Work in seed st (rep rows 7 and 8 of pat st) for 4

rows.

Then, beg with row 1, work the 8-row stripe pat st for 12 (10, 8, 8, 6, 6) rows more. Inc 1 st each side of next row, then every 12th (10th, 8th, 8th, 6th, 6th) row 3 (4, 5, 6, 7, 8) times more—37 (41, 45, 47, 51, 55) sts. Work even until piece measures approx 12½ (12½, 12½, 13, 13, 13½)"/32 (32, 32, 33, 33, 34)cm from beg.

Raglan cap shaping

Work same as for back raglan armhole shaping—7 sts rem. Sl sts to a st holder.

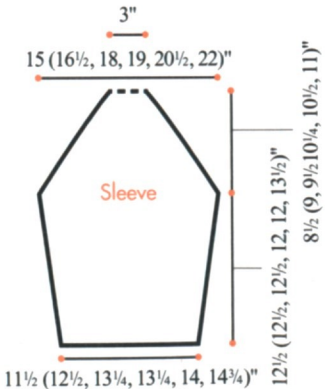
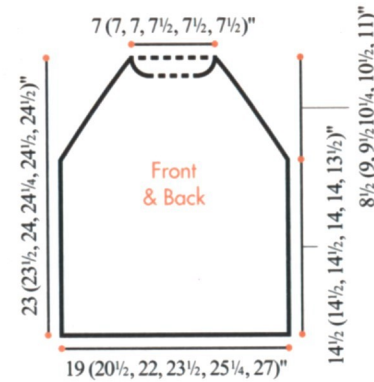
Finishing

Sew raglan sleeve caps into raglan armholes.

Neckband

Place sts on circular needle in position to work the neck band and join color A at 1 st before the right back neck edge.

Rnd 1 K2tog (1 st from sleeve with 1 st from the back neck edge), work in seed st to 1 st before the end of the back neck, k2tog (or p2tog in pat) the last back neck st with 1 st from the sleeve, work in seed st to last st of sleeve, k2tog (or p2tog in pat) the last sleeve st with 1 st from the front neck, work 2 sts in



seed st then pick up and k7 sts for the shaped front neck, work 9 (9, 9, 11, 11, 11) front neck sts in seed st, pick up and k7 sts from shaped front neck edge, work 2 sts in seed st, k2tog the last front neck st with 1 st from sleeve, work in seed st to end—50 (50, 50, 54, 54, 54) sts. Join to work in ends and pm to mark beg of ends.

Next rnd K the purl and p the knit sts.

Rep this rnd for seed st for 3 rnds more.

Bind off in pat.

Sew side and sleeve seams. ■

9 Brioche Shawl



Shown on pages 26 and 27.

●●●○ INTERMEDIATE

Finished Measurements

Approx 24 x 60"/61 x 152.5cm

Materials

- 5 hanks of Noro/KFI Miyabi in #18
- One size 10 (6mm) circular needle, 32"/80cm long OR SIZE TO OBTAIN GAUGE
- Cable needle (cn)
- Stitch markers

Gauge

16 sts and 27 rows to 4"/10cm over ripple brioche using size 10 (6mm) needles. TAKE TIME TO CHECK GAUGE.

Stitches Used

Brk (brioche knit st) K the stitch that was slipped in the previous rnd together with its yo.
Sl1yo (slip 1, yo) Bring the yarn forward between the needles, slip 1 purlwise, bring the yarn to the

back over the needle to create a yarn over. (Slipped stitches and accompanying yarn over are treated as a single stitch in stitch counts.)

Tbl through back loop.

8-st RC Slip 4 sts to cn and hold to back, [sl1yo, brk1] twice, then work sts from cn as foll: [sl1yo, brk1] twice.

8-st LC Slip 4 sts to cn and hold to front, [sl1yo, brk1] twice, then work sts from cn as foll: [sl1yo, brk1] twice.

Basic Brioche

(over an even number of sts)

Set-up row K1, *sl1yo, k1; rep from * to last st, k1.

Next row K1, *sl1yo, brk1; rep from * to last st, k1. Rep last row for basic brioche.

Ripple Brioche

Set-up row K1, *sl1yo, k1; rep from * to last st, k1.

Next row K1, *sl1yo, brk1 tbl; rep from * to last st, k1.

Rep last row for ripple brioche.

Notes

- 1) To make wider stripes of similar colors, alternate pulling yarn from the inside of one skein and the outside of the next one.
- 2) Circular needle is used to accommodate large number of sts, do not join.

Chart 1

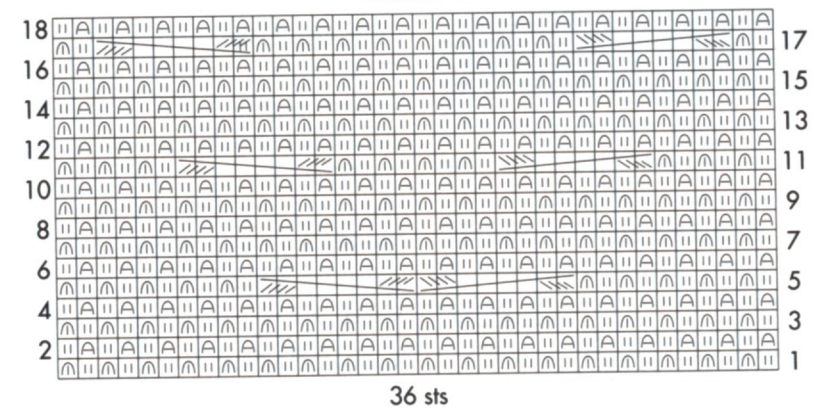
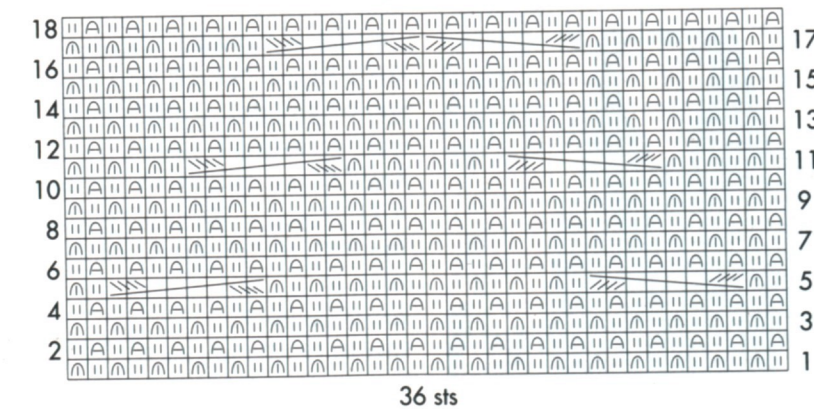


Chart 2



Stitch Key

- sl1yo
- brk1 on RS
- brk1 on WS
- 8-st RC
- 8-st LC

Shawl

Cast on 110 sts. Knit 3 rows.

Set up row (RS) K1, [sl1yo, k1] 4 times, place marker (pm), [sl1yo, k1] 18 times, pm, [sl1yo, k1] 10 times, pm, [sl1yo, k1] 18 times, pm, [sl1yo, k1] 4 times, k1.

Row 2 Sl 1, [sl1yo, brk1 tbl] 4 times, sl marker, [sl1yo, brk1] 18 times, sl marker, [sl1yo, brk1 tbl] 10 times, sl marker, [sl1yo, brk1] 18 times, sl marker, [sl1yo, brk1 tbl] 4 times, k1.

Rows 3 and 4 Rep row 1.

Beg charts

Note Beg charts on row 5 for first repeat.

Row 5 (RS) K1, [sl1yo, brk1 tbl] 4 times, sl marker, work row 5 of chart 1 over 36 sts, sl marker, [sl1yo, brk1 tbl] 10 times, sl marker, work row 5 of chart 2 over 36 sts, sl marker, [sl1yo, brk1 tbl] 4 times, k1. Cont in pat as established, working charts between markers and working in ripple brioche over rem sts, through row 18 of charts, then rep rows 1–18 of charts until piece measures approx 59"/150cm from beg, end with a row 18 of charts.

Next row Sl 1, [sl1yo, brk1 tbl] 4 times, sl marker, [sl1yo, brk1] 18 times, sl marker, [sl1yo, brk1 tbl] 10 times, sl marker, [sl1yo, brk1] 18 times, sl marker, [sl1yo, brk1 tbl] 4 times, k1.

Rep last row 3 times more. Knit 3 rows.

Bind off knitwise.

Finishing

Block to measurements, stretching shawl lengthwise to set cables. ■

10 Cabled Wrap



Shown on page 28.

●●●○ INTERMEDIATE

Finished Measurements

Approx 22 x 48"/56 x 122cm

Materials

- 5 cakes of Noro/KFI Okunoshima in #3
- One size 10 (6mm) circular needle, 32"/80cm long OR SIZE TO OBTAIN GAUGE
- Cable needle (cn)

Gauges

- 16 sts and 24 rows to 4"/10cm over St st using size 10 (6mm) needles.
- 19 sts and 22 rows to 4"/10cm over cable pat using size 10 (6mm) needles.

TAKE TIME TO CHECK GAUGES.

Stitches Used

LT (left twist) Insert needle into second st on LH needle through back loop, do not drop from needle, k first st and let both drop from needle.

3-st RC Sl 1 st to cn, hold to back, k2, k1 from cn.

3-st LC Sl 2 sts to cn, hold to front, k1, k2 from cn.

3-st RPC Sl 1 st to cn, hold to back, k2, p1 from cn.

3-st LPC Sl 2 sts to cn, hold to front, p1, k2 from cn.

4-st LC Sl 2 sts to cn, hold to front, k2, k2 from cn.

Cable Pattern

(multiple of 12 sts plus 4)

Row 1 (WS) *[K1, p2] twice, k4, p2; rep from * to last 4 sts, k1, p2, k1.

Row 2 (RS) P1, LT, p1, *k8, p1, LT, p1; rep from * to end.

Row 3 Rep row 1.

Row 4 P1, LT, p1, *3-st LPC, k2, 3-st RPC, p1, LT, p1; rep from * to end.

Row 5 K1, p2, *k2, p2; rep from * to last st, k1.

Row 6 P1, LT, *p2, 3-st LPC, 3-st RPC, p2, LT; rep from * to last st, p1.

Row 7 K1, p2, *k3, p4, k3, p2; rep from * to last st, k1.

Row 8 P1, LT, *p3, 4-st LC, p3, LT; rep from * to last st, p1.

Row 9 Rep row 7.

Row 10 P1, LT, *p2, 3-st RC, 3-st LC, p2, LT; rep from * to last st, p1.

Row 11 Rep row 5.

Row 12 P1, LT, p1, *3-st RC, k2, 3-st LC, p1, LT, p1; rep from * to end.

Row 13 Rep row 1.

Row 14 Rep row 2.

Rep rows 1–14 for cable pat.

Notes

1) Cable pat may be worked from text or chart.

2) Circular needle is used to accommodate larger number of sts, do not join.

Wrap

Cast on 100 sts.

Work in garter st (k every row) for 1"/2.5cm.

Next row (inc RS) K2, M1, [k5, M1] 19 times, k3—120 sts.

Beg cable pat

Row 1 (WS) K4 (garter st edge sts), work in cable pat to last 4 sts, k4 (garter st edge sts).

Row 2 (RS) K4, work in cable pat as established to last 4 sts, k4.

Cont in pats as established, working 4 sts in garter st each side, until piece measures approx 47"/119.5cm from beg, end with a RS row.

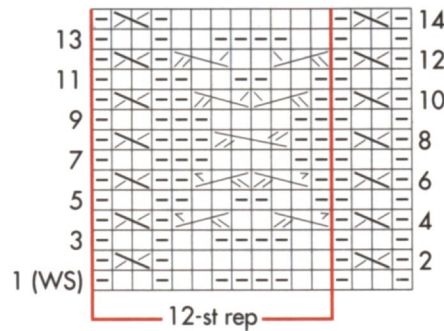
Next row (dec WS) K1, k2tog, [k4, k2tog] 19 times, k3—100 sts.

Work in garter st for 1"/2.5cm.

Bind off knitwise.

Finishing

Block to measurements. ■



Stitch Key

- k on RS, p on WS
- p on RS, k on WS
- LT
- 3-st RC
- 3-st LC
- 3-st RPC
- 3-st LPC
- 4-st LC

11 Simple Cabled Shawl



Shown on page 29.

●●●○ INTERMEDIATE

Finished Measurements

Approx 16 x 83"/40.5 x 210.5cm

Materials

- 2 cakes Noro/KFI Tsuido in #1
- Size 10 (6mm) circular needle, 24"/60cm long OR SIZE TO OBTAIN GAUGE
- Stitch markers
- Cable needle (cn)

Gauge

14 sts and 18 rows to 4"/10cm over garter st using size 10 (6mm) needles.

TAKE TIME TO CHECK GAUGE.

Stitches Used

6-st RC Sl 4 sts to cn, hold to back, k2, k4 from cn.

Notes

1) Shawl is worked flat with center cable.

2) Slip all sts purlwise.

Shawl

Cast on 14 sts.

Knit 2 rows.

Row 1 (RS) K3, place marker (pm), p1, k6, p1, pm, k3.

Row 2 (WS) Sl 1, k to marker, sl marker, k1, p6, k1, sl marker, k to end.

Row 3 Sl 1, k to marker, yo, sl marker, p1, k6, p1, sl marker, k to end—15 sts.

Row 4 Sl 1, k to marker, sl marker, k1, p6, k1, sl marker, k to end.

Beg shaping section 1

Row 1 (RS) Sl 1, k to marker, sl marker, p1, k6, p1, sl marker, k to end.

Rows 2, 4 and 6 (WS) Sl 1, k to marker, sl marker, k1, p6, k1, sl marker, k to end.

Row 3 Sl 1, k to marker, yo, sl marker, p1, 6-st RC, p1, sl marker, k to end—1 st inc'd.

Row 5 Sl 1, k to marker, sl marker, p1, k6, p1, sl marker, k to end.

Row 7 Sl 1, k to marker, yo, sl marker, p1, k6, p1, sl marker, k to end—1 st inc'd.

Row 8 Rep row 2.

Rep rows 1–8 for 21 times more—59 sts.

Beg center section

Row 1 (RS) Sl 1, k to marker, sl marker, p1, k6, p1, sl marker, k to end.

Rows 2, 4 and 6 (WS) Sl 1, k to marker, sl marker, k1, p6, k1, sl marker, k to end.

Row 3 Sl 1, k to 2 sts before marker, k2tog, yo, sl marker, p1, 6-st RC, p1, sl marker, k to end.

Row 5 Sl 1, k to marker, sl marker, p1, k6, p1, sl marker, k to end.

Row 7 Sl 1, k to 2 sts before marker, k2tog, yo, sl marker, p1, k6, p1, sl marker, k to end.

Row 8 Rep row 2.

Rep rows 1–8 twice more.

Beg shaping section 2

Row 1 (RS) Sl 1, k to marker, sl marker, p1, k6, p1, sl marker, k to end.

Rows 2, 4 and 6 (WS) Sl 1, k to marker, sl marker, k1, p6, k1, sl marker, k to end.

Row 3 Sl 1, k to 3 sts before marker, SK2P, yo, sl marker, p1, 6-st RC, p1, sl marker, k to end—1 st dec'd.

Row 5 Sl 1, k to marker, sl marker, p1, k6, p1, sl marker, k to end.

Row 7 Sl 1, k to 3 sts before marker, SK2P, yo, sl marker, p1, k6, p1, sl marker, k to end—1 st dec'd.

Row 8 Rep row 2.

Rep rows 1–8 for 21 times more—15 sts.

Bind off.

Finishing

Block to measurements. ■

12 Two-Color Cabled Scarf



Shown on page 30.

●●●● COMPLEX

Finished Measurements

11 x 67"/28 x 170cm

Materials

- 2 balls of Noro/KFI Silk Garden Sock Solo in #S32 (MC)
- 2 balls of Noro/KFI Silk Garden Sock in #S8 (CC)
- One pair each sizes 5 (3.75mm) needles OR SIZE TO OBTAIN GAUGE
- Cable needle

Gauge

20 sts and 30 rows to 4"/10cm over cable pattern size 5 (4.75mm) needles.

TAKE TIME TO CHECK GAUGE.

Notes

1) On RS rows, all knit sts are worked with MC and purl sts are worked with CC; on WS rows, all knit sts are worked with CC, and all purl sts are worked with MC.

2) Carry yarns at the back or WS of work.

3) When changing colors, twist yarns on WS to avoid holes in work. To keep colors from tangling, always bring MC over CC and CC under MC.

4) See How-to's on page 31.

Stitches Used

3-st LPC Slip 2 sts to cn, hold to *front*, with CC, p1, then with MC, k2 from cn.

3-st RPC Slip 1 st to cn, hold to *back*, with MC, k2, then with CC, p1 from cn.

4-st wrap (worked with MC) [Wyib, slip next 4 sts to RH needle, wyif, slip same 4 sts back to LH needle] three times, with MC, knit these 4 sts.

Scarf

With CC, cast on 69 sts.

Set-up rows

Row 1 (RS) [With CC p3, with MC k4, with CC p3, with MC k2, with CC p1, with MC k2, with CC p3, with MC k4] 3 times, with CC p3.

Row 2 [With CC k3, with MC p4, with CC k3, with MC p2, with CC k1, with MC p2, with CC k3, with MC p4] 3 times, with CC k3.

Rows 3 and 4 Rep rows 1 and 2.

Beg cable pattern

Row 1 (RS) With CC p1, [with CC p1, 3-st RPC, 3-st LPC, with CC p2, with MC k2, with CC p1, with MC k2, with CC p2, 3-st RPC, 3-st LPC] 3 times, with CC p2.

Row 2 (and all WS rows) K the knit sts and p the purl sts matching colors.

Row 3 With CC p1, [with CC p1, with MC k2, with CC p2, 3-st LPC, 3-st RPC, with CC p1, 3-st LPC, 3-st RPC, with CC p2, with MC k2] 3 times, with CC p2.

Row 5 With CC p1, [with CC p1, with MC k2, with CC p3, 4-st wrap, with CC p3, 4-st wrap, with CC p3, with MC k2] 3 times, with CC p2.

Row 7 With CC p1, [with CC p1, with MC k2, with CC p2, 3-st RPC, 3-st LPC, with CC p1, 3-st RPC, 3-st LPC, with CC p2, with MC k2] 3 times, with CC p2.

Row 9 With CC p1, [with CC p1, 3-st LPC, 3-st RPC, with CC p2, with MC k2, with CC p1, with MC k2, with CC p2, 3-st LPC, 3-st RPC] 3 times, with CC p2.

Row 11 With CC p1, [with CC p2, 4-st wrap, with CC p3, with MC k2, with CC p1, with MC k2, with CC p3, 4-st wrap, with CC p1] 3 times, with CC p2.

Row 12 Rep row 2.
Rep rows 1–12 for Cable Pat until scarf measures 67"/170cm, ending with a pat row 12. Work Set-up rows 1–4 once more. Bind off in pat with CC.

Finishing

Weave in ends, and wet block, slightly stretching your scarf as you lay it flat to dry. ■

13 Alternating Rib Hat



Sized for adult woman. Shown on page 33.

●●●○ INTERMEDIATE

Finished Measurements

• Head circumference 20"/51cm*

*Note The head circumference is measured with the hat when worn, that is slightly stretched.

• Length 8½"/21.5cm

Materials

- 1 cake of Noro/KFI *Tabi* in #5
- One set (5) size 6 (4mm) dpn, OR SIZE TO OBTAIN GAUGE
- Cable needle (cn)
- Clip-on stitch marker

Gauge

24 sts and 30 rnds to 4"/10cm over alternating rib pat using size 6 (4mm) dpn.
TAKE TIME TO CHECK GAUGE.

Stitches Used

2-st LPT Sl 1 st to cn, hold to *front*, p1, k1 from cn.

2-st RPT Sl 1 st to cn, hold to *back*, k1, p1 from cn.

ssk tbl Slip next two sts knitwise, one at a time, to right-hand needle. Insert tip of left-hand needle into backs of these sts from left to right and knit them together to twist the st and decrease one stitch.

Alternating Rib Pattern

(worked in rnds over a multiple of 12 sts)

Rnd 1 *P1, k1 tbl, p1, k1tbl, 2-st RPT, p1, 2-st LPT, k1tbl, p1, k1tbl; rep from * around.

Rnd 2 *P1, k1tbl, p1, 2-st RPT, p3, 2-st LPT, p1,

k1tbl; rep from * around.

Rnd 3 *P1, k1tbl, p1, k1tbl, p5, k1tbl, p1, k1tbl; rep from * around.

Rnd 4 *P1, k1tbl, p1, k1tbl, p2, yo, p2tog, p1, k1tbl, p1, k1tbl; rep from * around.

Rnds 5–7 Rep rnd 3.

Rnd 8 *P1, k1tbl, p1, (k1tbl) 7 times, p1, k1tbl; rep from * around.

Rnd 9 *P1, 2-st LPT, k1tbl, p1, k1tbl, p1, k1tbl, p1, k1tbl, 2-st RPT; rep from * around.

Rnd 10 *P2, 2-st LPT, p1, k1tbl, p1, k1tbl, p1, 2-st RPT, p1; rep from * around.

Rnd 11 *P3, k1tbl, p1, k1tbl, p1, k1tbl, p1, k1tbl, p2; rep from * around.

Rnd 12 *Yo, p2tog, p1, k1tbl, p1, k1tbl, p1, k1tbl, p1, k1tbl, p2; rep from * around.

Rnds 13–15 Rep rnd 11.

Rnd 16 *(K1tbl) 4 times, p1, k1tbl, p1, k1tbl, p1, (k1tbl) 3 times; rep from * around.

Rep rnds 1–16 for alternating rib pat.

Hat

Cast on 108 sts and divide evenly over 4 dpn with 27 sts on each needle, taking care not to twist sts on needles. Place a clip-on st marker for beg of rnd.

Rnd 1 *P1, k1tbl; rep from * around.

Rep last rnd until piece measures 1½"/4cm from beg. Then, work the 16–rnd alternating rib pat until piece measures 6½"/16.5cm from beg, end with rnd 16 of pat.

Shape crown

Rnd 1 Work rnd 1 of alternating rib pat.

Dec rnd 2 *P1, k1tbl, p1, k2tog tbl, p3, ssk tbl, p1, k1tbl; rep from * around—90 sts.

Rnd 3 *P1, k1tbl, p1, k1tbl, p1, yo, p2tog, k1tbl, p1, k1tbl; rep from * around.

Rnds 4 and 5 *P1, k1tbl, p1, k1tbl, p3, k1tbl, p1, k1tbl; rep from * around.

Rnd 6 *P1, k1tbl, p1, (k1tbl) 5 times, p1, k1tbl; rep from * around.

Rnd 7 *P1, 2-st LPT, k1tbl, p1, k1tbl, p1, k1tbl, 2-st RPT; rep from * around.

Dec rnd 8 *P2, ssk tbl, p1, k1tbl, p1, k2tog tbl, p1; rep from * around—72 sts.

Rnd 9 *Yo, p2tog, k1tbl, p1, k1tbl, p1, k1tbl, p1; rep from * around.

Rnds 10 and 11 *P2, k1tbl, p1, k1tbl, p1, k1tbl, p1; rep from * around.

Dec rnd 12 *P1, k2tog tbl, p1, k1tbl, p1, ssk tbl; rep from * around—54 sts.

Dec rnd 13 Sl the first 2 sts, *p1, k1tbl, p1, SK2P; rep from * around, ending SK2P (using the first 2

slipped sts)—36 sts.

Dec rnd 14 *P1, SK2P; rep from * around—18 sts.

Dec rnd 15 *SK2P; rep from * around—6 sts.

Cut yarn leaving a long end for sewing. Draw through sts on needle once, then draw through sts a 2nd time and pull up tightly to fasten-off the top. ■

14 Zig Zag Cable Hat



Sized for adult woman. Shown on page 34.

●●●○ INTERMEDIATE

Finished Measurements

• Head circumference 22"/56cm

• Length 8"/20.5cm

Materials

- 1 cake of Noro/KFI *Tsuido* in #7
- One size 8 (5mm) circular needle, 16"/40cm long, OR SIZE TO OBTAIN GAUGE
- One set (4) size 8 (5mm) double-pointed needles (dpn)
- Cable needle (cn)
- Stitch marker

Gauge

19 sts and 25 rnds to 4"/10cm over zig zag cable pat using size 8 (5mm) needle.
TAKE TIME TO CHECK GAUGE.

Stitches Used

3-st RPT Sl 1 st to cn and hold to *back*, k2, then p1 from cn.

3-st LPT Sl 2 sts to cn and hold to *front*, p1, then k2 from cn.

German Twisted Cast-on

Measure out a long end of yarn for the number of sts

required for the cast-on and make a slip knot.

Hold the needle in place as for the long-tail cast-on method.

Place the needle under both strands of yarn around your thumb and underneath the strand around the front of your thumb forming an eyelet.

Bring the needle back behind the yarn on your index finger and through the thumb eyelet loop.

Release the loop and tighten the st. Rep until the required number of sts are cast on.

Hat

With circular needle, cast on 108 sts using the German twisted cast-on method. Join to work in rnds, taking care not to twist sts and pm for beg of rnd.

Note

As the pattern will "zig zag" to either side of the beg of rnd marker, sl the marker to a new position, when necessary, to keep it to the right of the first k2. After the last pat rnd of the rep, the marker will eventually move back to the original position.

Set-up rnd *K2, p4; rep from * around, sl marker.

Rnd 1 K2, *p3, 3-st RPT; rep from * to last 3 sts, sl 1 st to cn, sl marker.

Rnd 2 K2, p1 from cn, p3, *k2, p4; rep from * around end sl marker.

Rnds 3, 5 and 7 Rep rnd 1.

Rnds 4, 6 and 8 Rep rnd 2.

Rnd 9 *3-st LPT, p3; rep from * around, end remove marker, p1 and place new marker.

Rnd 10 *K2, p4; rep from * around, sl marker.

Rnds 11, 13 and 15 Rep rnd 9.

Rnds 12, 14 and 16 Rep rnd 10.

Then, rep rnds 1–16 once more.

Shape crown

Note When there are too few sts to fit comfortably on the circular needle, change to dpn and divide sts evenly over 3 dpn.

Dec rnd 1 *K2, p1, p2tog, p1; rep from * around—90 sts.

Rnd 2 *K2, p3; rep from * around.

Dec rnd 3 *K2, p2tog, p1; rep from * around—72 sts.

Rnd 4 *K2, p2; rep from * around.

Dec rnd 5 *K2, p2tog; rep from * around—54 sts.

Rnd 6 *K2, p1; rep from * around.

Dec rnd 7 *K2tog, p1; rep from * around—36 sts.

Rnd 8 *K1, p1; rep from * around.

Dec rnd 9 *Ssk; rep from * around—18 sts.

Rnd 10 Knit.

Rnd 11 *Ssk; rep from * around—9 sts.

Rnd 12 Knit.

Cut yarn leaving a long end and draw through sts on needle once, then draw through a 2nd time to close the top. ■

15 Cabled Hat



Sized for adult woman. Shown on page 35.

●●●○ INTERMEDIATE

Finished Measurements

• Head circumference 19½"/49.5cm

• Length 9¼"/23.5cm

Materials

- 1 cake of Noro/KFI *Okunoshima* in #2
- One each sizes 7 and 8 (4.5 and 5mm) circular needles, 16"/40cm long OR SIZE TO OBTAIN GAUGE
- Stitch marker
- Cable needle (cn)

Gauge

22 sts and 24 rows to 4"/10cm over Cable Pat using size 8 (5mm) needles.
TAKE TIME TO CHECK GAUGE.

Stitches Used

3-st RPC Sl 1 st to cn, hold to *back*, k2, p1 from cn.

3-st LPC Sl 2 sts to cn, hold to *front*, p1, k2 from cn.

4-st RC Sl 2 sts to cn, hold to *back*, k2, k2 from cn.

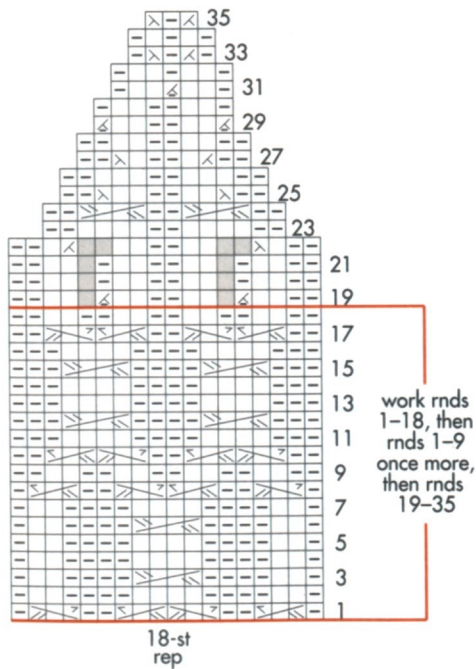
Cable Pattern

(over a multiple of 18 sts, dec'd to 3 sts)

Rnd 1 *P1, 3-st RPC, p2, 3-st LPC, 3-st RPC, p2, 3-st LPC, p1; rep from * around.

Rnd 2 *P1, k2, p4, k4, p4, k2, p1; rep from * around.

Rnd 3 *P1, k2, p4, 4-st RC, p4, k2, p1; rep from * around.
Rnd 4 *P1, k2, p4, k4, p4, k2, p1; rep from * around.
Rnd 5 *P1, k2, p4, k4, p4, k2, p1; rep from * around.
Rnd 6 *P1, k2, p4, 4-st RC, p4, k2, p1; rep from * around.
Rnd 7 *P1, k2, p4, k4, p4, k2, p1; rep from * around.
Rnd 8 *P1, 3-st LPC, p2, 3-st RPC, 3-st LPC, p2, 3-st RPC, p1.
Rnd 9 *P2, k2] 4 times, p2; rep from * around.
Rnd 10 *P2, 3-st LPC, 3-st RPC, p2, 3-st LPC, 3-st RPC, p2; rep from * around.
Rnd 11 *P3, k4, p4, k4, p3; rep from * around.
Rnd 12 *P3, 4-st RC, p4, 4-st RC, p3; rep from * around.
Rnd 13 *P3, k4, p4, k4, p3; rep from * around.
Rnd 14 *P3, k4, p4, k4, p3; rep from * around.
Rnd 15 *P3, 4-st RC, p4, 4-st RC, p3; rep from * around.
Rnd 16 *P3, k4, p4, k4, p3; rep from * around.



- Stitch Key
- | | |
|--------------------|-----------|
| □ k on RS, p on WS | 3-st RPC |
| □ p on RS, k on WS | 3-st LPC |
| ⊠ k2tog | 4-st RC |
| ⊠ ssk | no stitch |
| ⊠ p2tog | |

Rnd 17 *P2, 3-st RPC, 3-st LPC, p2, 3-st RPC, 3-st LPC, p2; rep from * around.
Rnd 18 *P2, k2] 4 times, p2; rep from * around.
Rnd 19 *P2, k2, p2tog, k2, p2, k2, p2tog, k2, p2; rep from * around—16 st rep.
Rnd 20 *P2, k2, p1, k2, p2, k2, p1, k2, p2; rep from * around.
Rnd 21 *P2, k2, p1, k2, p2, k2, p1, k2, p2; rep from * around.
Rnd 22 *P2, k1, ssk, k2, p2, k2, k2tog, k1, p2; rep from * around—14 st rep.
Rnd 23 *P2, k4, p2, k4, p2; rep from * around.
Rnd 24 *P2, 4-st RC, p2, 4-st RC, p2; rep from * around.
Rnd 25 *P2, ssk, k2, p2, k2, ssk, p2; rep from * around—12 st rep.
Rnd 26 *P2, k3, p2, k3, p2; rep from * around.
Rnd 27 *P2, k2tog, k1, p2, k1, ssk, p2; rep from * around—10 st rep.
Rnd 28 *P2, k2] twice, p2; rep from * around.
Rnd 29 *P2tog, k2, p2, k2, p2tog; rep from * around—8 st rep.
Rnd 30 *P1, k2, p2, k2, p1; rep from * around.
Rnd 31 *P1, k2, p2tog, k2, p1; rep from * around—7 st rep.
Rnd 32 *P1, k2, p1, k2, p1; rep from * around.
Rnd 33 *P1, k2tog, p1, ssk, p1; rep from * around—5 st rep.
Rnd 34 *P1, k1, p1, k1, p1; rep from * around.
Rnd 35 *K2tog, p1, ssk; rep from * around—3 st rep.

Note
Cable Pattern may be worked from text or chart.

Hat
With smaller needle, cast on 78 sts. Join, taking care not to twist sts, and place marker for beg of rnd.
Rnd 1 *P1, k2] 4 times, p1; rep from * around.
Rep rnd 1 for 11 rnds more.
Inc rnd *P1, M1 p-st, k2] 4 times, p1, M1 p-st; rep from * around—108 sts.
Change to larger needle.
Beg cable pat
Work rnds 1–18 of cable pat once, then work rnds 1–9 once more, then work rnds 19–35—18 sts.
Cut yarn and pull through rem sts, draw up and secure.

Finishing
Block lightly to measurements. ■

16 Twist Stitch Hat



Sized for adult woman. Shown on pages 36 and 37.

- INTERMEDIATE
- Finished Measurements**
- Head circumference 19½"/49.5cm
 - Length 9"/23cm
- Materials**
- 2 hanks of Noro/KFI Miyabi #9
 - One set (5) size 7 (4.5mm) double pointed needles (dpn) OR SIZE TO OBTAIN GAUGE
 - Clip-on st marker
 - 2"/5cm pompom marker (optional)

Gauge
24 sts and 29 rows = 4"/10cm over chart 1, unstretched, using size 7 (4.5mm) dpn.
TAKE TIME TO CHECK GAUGE.

Stitches Used
S2KP Sl 2 sts tog as for a k2tog to RH needle, k next st, then pass the 2 slipped sts over the k st, one at a time.
RT K2tog leaving the sts on LH needle, then k the first st again and sl both sts off needle.
LT Pass behind the first st on LH needle and k into the back loop of 2nd st, then k into the front loop of first st and let both sts fall from needle.

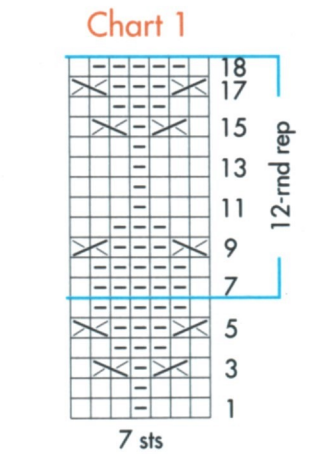
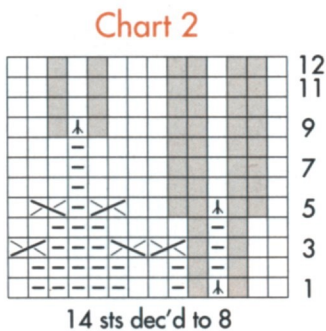
Note
The head circumference is measured with the hat when worn, that is, slightly stretched.

Hat
Using dpn, cast on 112 sts and divide evenly onto 4 dpn with 28 sts on each dpn. Join, taking care not

to twist sts on needles. Place a clip-on st marker to mark beg of rnds.
Rnd 1 *P1, [k2, p1] twice; rep from * around.
Rep this rnd for rib pat until piece measures 2"/5cm from beg.

Beg Chart 1
Rnd 1 Work the 7-st rep of chart 1 for 16 reps.
Cont to foll chart 1 through rnd 6, then rep rnds 7–18 twice.

Piece measures approx 6"/15cm from beg.
Beg Chart 2
Work rnds 1–12 of chart 2 once—64 sts.
Shape crown
Dec rnd 1 K4, S2KP, *k5, S2KP; rep from *, end k1—48 sts.
Knit 3 rnds.
Dec rnd 2 *K3, S2KP; rep from * around—32 sts.
Knit 3 rnds.
Dec rnd 3 Sl 1, *k1, S2KP; rep from * to last 2 sts,



- Stitch Key
- | | |
|--------|-------------|
| □ knit | ⊠ RT |
| □ purl | ⊠ LT |
| ⊠ S2KP | ■ no stitch |

end sl 2, remove marker, k1 and pass the 2 sl sts over—16 sts.
Knit 1 rnd.
Last rnd *K2tog; rep from * around—8 sts.
Cut yarn leaving a long end for sewing. Draw through sts on needle once, then draw through sts a 2nd time and pull up tightly to fasten off the top.
Make a pompom and fasten to the top of hat with the long end. ■

17 Lace Cowl



Shown on pages 38 and 39.

- INTERMEDIATE
- Finished Measurements**
- Circumference 56"/142cm
 - Width 9"/23cm
- Materials**
- 2 cakes of Noro/KFI Okunoshima in #7
 - One size 9 (5.5mm) circular needle, 32"/40cm long OR SIZE TO OBTAIN GAUGE
 - Stitch marker
 - Cable needle (cn)

Gauges
• 16 sts and 22 rnds to 4"/10cm over St st using size 9 (5.5mm) needles.
• 16 sts and 18 rnds to 4"/10cm over Lace Pat using size 9 (5.5mm) needles.
TAKE TIME TO CHECK GAUGES.

Lace Pattern
(multiple of 16 sts)
Rnds 1 and 2 Purl.
Rnds 3 and 4 Knit.

Rnd 5 *K3tog, k3, [yo, k1] 4 times, k2, SK2P, k1; rep from * around.
Rnds 6, 8, 10, and 12 Knit.
Rnd 7 *K3tog, k2, yo, k1, yo, k3, yo, k1, yo, k2, SK2P, k1; rep from * around.
Rnd 9 *K3tog, k1, yo, k1, yo, k5, yo, k1, yo, k1, SK2P, k1; rep from * around.
Rnd 11 *K3tog, yo, k1, yo, k7, yo, k1, yo, SK2P, k1; rep from * around.
Rnds 13–20 Rep rnds 5–12.
Rnds 21 and 22 Purl.
Rnds 23–28 Knit.
Rep rnds 1–28 for lace pat.

Cowl
Cast on 224 sts. Join, taking care not to twist sts. Place marker for beg of rnd.
Work rnds 1–28 of lace pat once, then work rnds 1–12 once more.
Purl 1 rnd.
Bind off all sts purlwise.

Finishing
Block to measurements. ■

18 Two-Color Cowl



Shown on page 40.

- INTERMEDIATE
- Finished Measurements**
- Circumference 26"/66cm
 - Width 12"/30.5cm
- Materials**
- 1 cake of Noro/KFI Bachi in #7 (MC)
 - 1 cake of Noro/KFI Kanzashi in #01 (CC)

- One size 13 (9mm) circular needle, 24"/60cm long, OR SIZE TO OBTAIN GAUGE
- Stitch marker

Gauge

10 sts and 18 rnds to 4"/10cm over slip st pat using size 13 (9mm) needle.
TAKE TIME TO CHECK GAUGE.

Slip Stitch Pattern

(over an even number of sts)
Rnds 1 and 2 With MC, knit.
Rnd 3 With CC, *sl 1 wyib, k1; rep from * around.
Rnd 4 With CC, *sl 1 wyib, p1; rep from * around.
Rnds 5 and 6 With MC, knit.
Rnd 7 With CC, *k1, sl 1 wyib; rep from * around.
Rnd 8 With CC, *p1, sl 1 wyib; rep from * around.
Rep rnds 1–8 for slip st pat.

Cowl

With MC, cast on 66 sts. Join, taking care not to twist the sts. Place marker for beg of rnd.

Beg slip st pat

Work rnds 1–8 of slip st pat 6 times. Work rnds 1–6 once more. Bind off knitwise.

Finishing

Block to measurements. ■

19 Sideways Cowl



Shown in on page 41.

●●○○ EASY

Finished Measurements

- Width 25"/63.5cm
- Length at center 11½"/29cm

Materials

- 1 cake of Noro/KFI Ito in #16
- One pair size 8 (5mm) needles OR SIZE TO OBTAIN GAUGE
- Spare size 8 (5mm) needle
- Size K/10.5 (6.5mm) crochet hook and scrap yarn for provisional cast-on
- Stitch markers

Gauge

16 sts and 22 rows to 4"/10cm over St st using size 8 (5mm) needles.
TAKE TIME TO CHECK GAUGE.

Provisional Cast On

Using scrap yarn and crochet hook, ch the number of sts to cast on plus a few extra. Cut a tail and pull the tail through the last chain. With knitting needle and yarn, pick up and knit the stated number of sts through the "purl bumps" on the back of the chain. To remove scrap yarn chain, when instructed, pull out the tail from last crochet stitch. Gently and slowly pull on the tail to unravel the crochet stitches, carefully placing each released knit stitch on a needle.

3-Needle Bind-Off

- 1) Hold right sides of pieces together on two needles. Insert third needle knitwise into first st of each needle, and wrap yarn knitwise.
- 2) Knit these two sts together, and slip them off the needles. *Knit the next two sts together in the same manner.
- 3) Slip first st on 3rd needle over 2nd st and off needle. Rep from * in step 2 across row until all sts are bound off.

Stitches Used

M1L Insert LH needle from front to back under the strand between last st worked and next st on LH needle. K into the back loop to twist the st—1 st inc'd.

Notes

- 1) Slip all sts purlwise.
- 2) Garter stitch borders are folded to WS and sewn down in finishing.

Cowl

Cast on 17 sts using provisional cast-on, leaving a long tail.

Row 1 (RS) Sl 1, k2, place marker (pm), k11, pm, k3.

Row 2 (WS) Sl 1, k2, sl marker, p11, sl marker, k3.

Row 3 (inc RS) Sl 1, k2, sl marker, k to marker, M1L, sl marker, k3—1 st inc'd.

Row 4 (WS) Sl 1, k2, sl marker, p to marker, sl marker, k3.

Rep rows 3 and 4 for 33 times more—51 sts.

Next row (dec RS) Sl 1, k2, sl marker, k to 2 sts before marker, k2tog tbl, sl marker, k3—1 st dec'd.

Next row (WS) Sl 1, k2, sl marker, p to marker, sl marker, k3.

Rep last 2 rows for 33 times more—17 sts.

Carefully remove provisional cast-on and place sts on spare needle. Join cast-on row to last row using 3-needle bind-off, leaving a long tail.

Fold garter stitch borders to WS and tack in place using the tails. Block to measurements. ■

20 Textured Blanket



Shown on pages 42 and 43.

●●●○ INTERMEDIATE

Finished Measurements

Approx 30" x 40"/76cm x 102cm

Materials

- 2 cakes of Noro/KFI Kanzashi in #07 (A)
- 2 cakes of Noro/KFI Bachi in #07 (B)
- One pair size 10½ (6.5mm) needles OR SIZE TO OBTAIN GAUGE
- One size 10½ (6.5mm) circular needle 36"/91cm long

Gauge

11 sts and 17 rows to 4"/10cm over St st and broken rib using size 10½ (6.5mm) needles.

TAKE TIME TO CHECK YOUR GAUGE.

Broken Rib

(over an even number of sts)

Row 1 (RS) Sl 1, knit to end.

Row 2 Sl 1, *k1, p1; rep from * to last st, k1.

Rep rows 1 and 2 for broken rib.

Blanket

Block 1 (make 10)

With A, cast on 20 sts. Work in St st (k on RS, p on WS) for 34 rows.

Bind off loosely.

Block 2 (make 10)

With B, cast on 20 sts. Work in broken rib pat for 34 rows.

Bind off all sts.

Finishing

Block individual sections to same size. Sew blocks together in 4 rows of 5 blocks, alternating blocks 1 and 2 and occasionally using the reverse side of blocks for added textural interest.

Side borders

With RS facing, circular needle and B, pick up and k120 sts along longer side edge. Knit 3 rows. Bind off all sts. Rep on opposite edge.

Lower and top borders

With RS facing, circular needle and B, pick up and k84 sts along shorter edge, including side borders. Knit 3 rows. Bind off all sts. Repeat on opposite edge. Block entire piece lightly to neaten seams. ■

21 Block Afghan



Shown on page 44.

●●●○ INTERMEDIATE

Finished Measurements

Approx 48 x 36"/122 x 91.5cm

Materials

- 3 balls of Noro/KFI Silk Garden Solo in #17 (A)
- 5 balls Noro/KFI Silk Garden in #471 (B)
- 4 balls of Noro/KFI Silk Garden Solo in #31 (C)
- One size 10 (6mm) circular needle, 32"/80cm OR SIZE TO OBTAIN GAUGE

Gauge

16 sts and 20 rows to 4"/10cm over St st using size 10 (6mm) needles.

TAKE TIME TO CHECK YOUR GAUGE.

Seed Stitch

Row 1 (WS) *K1, p1; rep from * to end.

Row 2 K the purl sts and p the knit sts.

Rep row 2 for seed st.

Note

Circular needle is used to accommodate the large number of sts. Do not join.

Section 1

With A, cast on 48 sts. Work in St st (k on RS, p on WS) for 10"/25.5cm (50 rows). Cut A, join B.

With B, work in St st for 10"/25.5cm (50 rows). Cut B, join A.

With A, work in St st for 10"/25.5cm (50 rows). Cut A.

Bind off.

Section 2

Turn strip 90 degrees. With RS facing and B, pick up and k approx 40 sts along side of each stripe of 50 rows for a total of 120 sts.

Beg with a WS row, work in St st for 5"/12.5cm (20 rows, including the pick up row). Cut B, join A.

With A, work in St st for 5"/12.5cm (20 rows). Cut A, join B.

With B, work in St st for 5"/12.5cm (20 rows). Cut B, join.

Border

With C, knit next row on RS. Work in seed st for 4"/10cm, end with a WS row. Bind off sts in pat.

Section 3

Work as for Section 2 along other side of Section 1.

Side borders

With RS facing and C, pick up and k sts evenly along one long side edge (approx 4 sts for every 5 rows). Work in seed st for 4"/10cm, end with a WS row. Bind off sts in pat.

Work in same way along other side edge.

Finishing

Block to measurements. ■

22 Zig Zag Pillow



Shown on page 45.

●●○○ EASY

Finished Measurements

Approx 16 x 16"/40.5 x 40.5cm

Materials

- 1 ball of Noro/KFI Kureyon each in #188 (A) and #343 (B)
- One pair size 8 (5mm) needles OR SIZE TO OBTAIN GAUGE
- 16"/40cm square pillow form

Gauge

18 sts and 20 rows to 4"/10cm over Chevron st using size 8 (5mm) needles.

TAKE TIME TO CHECK YOUR GAUGE.

Chevron Stitch

(multiple of 16 sts plus 9)

Row 1 *K1, M1, k6, S2KP, k6, M1; rep from * to last 9 sts, k1, M1, k6, k2tog.

Row 2 Purl.

Rep rows 1 and 2 for chevron stitch.

Note

Pillow cover is worked as one piece and seamed on 3 edges.

Pillow

With A, cast on 73 sts.

Row 1 (RS) Knit.

Row 2 Purl.

Beg Chevron Stitch

Rows 3–16 With A, work 14 rows in chevron stitch.

Row 17 With A, k1, M1, k6, change to B, slip 2, k1 with B, pass the two slipped stitches over the knit stitch, cont with B in chevron stitch to end.

Row 18 Purl, keeping colors as established and twisting yarns at join to prevent gap.

Rows 19–26 Rep rows 17 and 18 four times.

Rows 27–36 With A only, cont in chevron stitch for 10 rows.

Row 37 With A, [k1, M1, k6, S2KP, k6, M1] twice, k1, M1, k6, change to B, slip 2, k1 with B, pass the two slipped stitches over the knit stitch, cont with B in chevron stitch to end.

Row 38 Purl, keeping colors as established and twisting yarns at join to prevent gap.

Rows 39–46 Rep rows 37 and 38 four times.

Rows 47–56 With A only, cont in chevron stitch for 10 rows.

Row 57 With A, k1, M1, k6, S2KP, k6, M1, k1, M1, k6, change to B, slip 2, k1 with B, pass the two slipped stitches over the knit stitch, cont with B in chevron stitch to end.

Row 58 Purl, keeping colors as established and twisting yarns at join to prevent gap.

Rows 59–66 Rep rows 57 and 58 four times.

Row 67–82 With A only, cont in chevron stitch for 16 rows.

Row 83–98 With B only, cont in chevron stitch for 16 rows.

Row 99 With B, k1, M1, k6, change to A, slip 2, k1 with A, pass the two slipped stitches over the knit stitch, cont with A in chevron stitch to end.

Row 100 Purl, keeping colors as established and twisting yarns at join to prevent gap.

Rows 101–108 Rep rows 99 and 100 four times.

Rows 109–118 With B only, cont in chevron stitch for 10 rows.

Row 119 With B, [k1, M1, k6, S2KP, k6, M1] twice, k1, M1, k6, change to A, slip 2, k1 with A, pass the two slipped stitches over the knit stitch, cont with A in chevron stitch to end.

Row 120 Purl, keeping colors as established and twisting yarns at join to prevent gap.

Rows 121–128 Rep rows 119 and 120 four times.

Row 129–138 With B only, cont in chevron stitch for 10 rows.

Row 139 With B, k1, M1, k6, S2KP, k6, M1, k1, M1, k6, change to A, slip 2, k1 with A, pass the two slipped stitches over the knit stitch, cont with A

in chevron stitch to end.

Row 140 Purl, keeping colors as established and twisting yarns at join to prevent gap.

Row 141–148 Rep rows 139 and 140 four times.

Row 149–162 With B only, cont in chevron stitch for 14 rows.

Row 163 With B, knit. With B, bind off.

Finishing

Block lightly to measurements. Fold pillow cover in half and sew side seams. Insert pillow form and sew remaining edges closed. ■

23 Cabled Pillow



Shown on pages 46 and 47.

●●●○ INTERMEDIATE

Finished Measurements

Approx 22 x 22"/56 x 56cm

Materials

- 3 cakes of Noro/KFI Bachi in #5
- One pair size 10.5 (6.5mm) needles OR SIZE TO OBTAIN GAUGE
- One 22"/56cm square pillow form
- Cable needle (cn)

Gauge

13 sts and 17 rows to 4"/10cm over Irish Moss Pat using size 10.5 (6.5mm) needles.
TAKE TIME TO CHECK GAUGE.

Stitches Used

8-st RC Sl 4 sts to cn and hold to back of work, k4, k4 from cn.

8-st LC Sl 4 sts to cn and hold to front of work, k4, k4 from cn.

Irish Moss Pat

(over an odd number of sts)

Row 1 (RS) *K1, p1; rep from * to last st, k1.

Row 2 (WS) *P1, k1; rep from * to last st, p1.

Row 3 *P1, k1; rep from * to last st, p1.

Row 4 *K1, p1; rep from * to last st, k1.

Rep rows 1–4 for Irish Moss Pat.

Note

Back is worked in two halves that overlap to form an opening for pillow form.

Back Half (make 2)

Cast on 73 sts. Work in Irish Moss Pat until piece measures 13½"/34.5cm from beg, end with a WS row. Bind off in pat.

Front

Cast on 73 sts.

Set up row (inc WS) [K1, p1] twice, [p8, M1 p-st] 7 times, p10, k1, p1, k1—80 sts.

Beg cable pat

Row 1 (RS) [K1, p1] twice, 8-st RC, k20, 8-st RC, 8-st LC, k20, 8-st LC, [p1, k1] twice.

Row 2 and all WS rows K the knit sts and p the purl sts.

Row 3 [P1, k1] twice, k to last 4 sts, [k1, p1] twice.

Row 5 [K1, p1] twice, k24, 8-st RC, k8, 8-st LC, k24, [p1, k1] twice.

Row 7 Rep row 3.

Row 9 [K1, p1] twice, k20, 8-st RC, k16, 8-st LC, k20, [p1, k1] twice.

Row 11 Rep row 3.

Row 13 [K1, p1] twice, k16, 8-st RC, k24, 8-st LC, k16, [p1, k1] twice.

Row 15 Rep row 3.

Row 17 [K1, p1] twice, k12, 8-st RC, k32, 8-st LC, k12, [p1, k1] twice.

Row 19 Rep row 3.

Row 21 [K1, p1] twice, k8, 8-st RC, k12, 8-st RC, 8-st LC, k12, 8-st LC, k8, [p1, k1] twice.

Row 23 Rep row 3.

Row 25 [K1, p1] twice, k4, 8-st RC, k12, 8-st RC, k8, 8-st LC, k12, 8-st LC, k4, [p1, k1] twice.

Row 27 Rep row 3.

Row 29 [K1, p1] twice, 8-st RC, k12, 8-st RC, k16, 8-st LC, k12, 8-st LC, [p1, k1] twice.

Row 31 Rep row 3.

Row 32 Rep row 2.

Rep rows 13–32 until piece measures approx 22"/56cm from beg, end with a RS row.

Next row (dec WS) Work pat over 4 sts, [p7, p2tog] 7 times, p9, work pat over last 4 sts—73 sts. Bind off in pat.

Finishing

Block front to 22"/56cm square. Block back halves and overlap to measure 22"/56m square, pin overlapped edges in place.

Sew front to back, working through all 3 layers of fabric along overlapped back edges. Insert pillow form through back opening. ■

24 Collared Cardigan



Sized for Small (Medium, Large, 1X). Shown in size Small on page 48.

●●●○ INTERMEDIATE

Finished Measurements

- Bust (closed) 42 (45, 48, 52)"/106.5 (114, 122, 132)cm
- Length 27½ (28, 28½, 29)"/70 (71, 72.5, 73.5)cm
- Upper arm 16 (17, 18, 19)"/41 (43, 46, 48)cm

Materials

- 3 (4, 4, 5) cakes of Noro/KFI Bachi in #11
- One pair each sizes 10 and 10½ (6 and 6.5mm) needles OR SIZE TO OBTAIN GAUGE
- Five 7/8-inch/22mm buttons
- Clip-on stitch markers

Gauge

11 sts and 16 rows = 4"/10cm over chart pat using larger needles.
TAKE TIME TO CHECK GAUGE.

Back

With smaller needles, cast on 62 (66, 70, 76) sts. Knit 6 rows.

Change to larger needles.

Beg chart pattern

Row 1 (RS) Beg with st 1 (1, 2, 1), work to end of the rep line, then work the 10-st rep 5 (5, 6, 6) times more, work 2 (6, 1, 6) sts after rep.

Cont to work in chart pat as established, working rows 1–16 once.

Dec row (RS) K2tog, cont in pat to last 2 sts, k2tog—2 sts dec'd.

Rep dec row every 30th row once more—58 (62, 66, 72) sts. Work even until piece measures approx 17"/43cm from beg and there are 68 rows worked in the chart pat.

Pm each side of the last row worked to mark the beg of the armholes. Work even for 32 (34, 36, 38) rows from the markers to measure 8 (8½, 9, 9½)"/20.5 (21.5, 23, 24)cm for the armholes. Pm to mark the center 14 (14, 14, 16) sts on the last WS row.

Neck and shoulder shap

Row 1 (RS) Bind off 4 (4, 5, 5) sts, work to the marked sts, join a 2nd ball of yarn and bind off center 14 (14, 14, 16) sts, work to end.

Row 2 (WS) Bind off 4 (4, 5, 5) sts, work to last 2 sts on first side, p2tog; on 2nd side, p2tog, work to end.

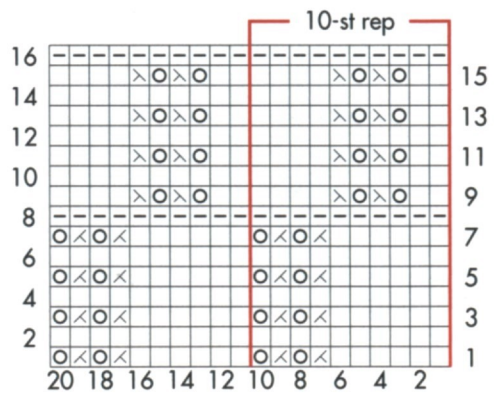
Row 3 Bind off 4 (4, 5, 5) sts, work to end of first side; on 2nd side, work to end.

Row 4 Rep row 2.

Row 5 Bind off 4 (4, 5, 5) sts, work to end of first side; on 2nd side, work to end.

Row 6 Rep row 5.

Row 7 Bind off 4 (5, 5, 6) sts, work to end of first side; on 2nd side, work to end.



- Stitch Key**
- k on RS, p on WS
 - p on RS, k on WS
 - ⊗ yo
 - ⊠ k2tog
 - ⊡ SKP

Row 8 Rep row 7.

Row 9 Bind off 4 (5, 4, 6) sts; on 2nd side, work to end.

Row 10 Bind off 4 (5, 4, 6) sts.

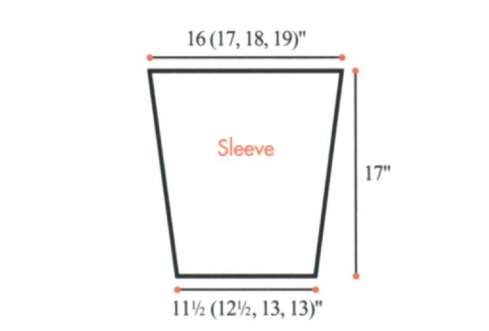
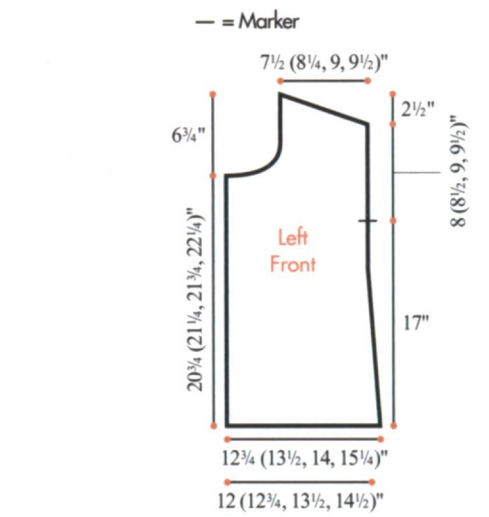
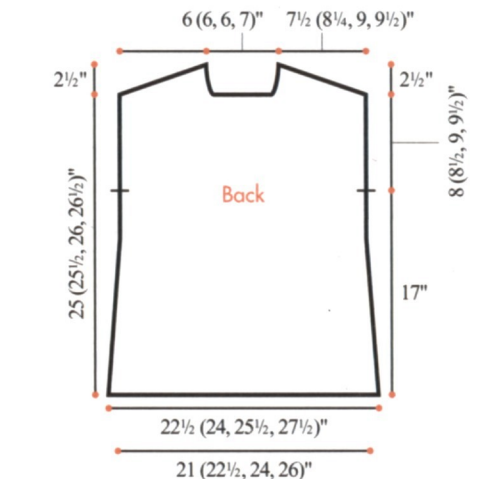
Left Front

With smaller needles, cast on 35 (37, 39, 42) sts. Knit 6 rows.

Change to larger needles.

Beg chart pattern

Row 1 (RS) K1 (1, 0, 2), then beg with st 1 (1, 2, 1), work to the rep line, then work the 10-st rep



Bind off 3 sts at beg of next 2 rows.
Dec row (RS) K1, k2tog, work in pat to last 3 sts, end SKP, k1—2 sts dec'd.
Rep this dec row every other row 7 (8, 9, 10, 11, 12, 13) times more—36 sts. Purl 1 row. Bind off.

Finishing

Sew shoulder seams.
Neckband
With RS facing and circular needle, pick up and k 3 sts from shaped back neck edge, k20 (22, 22, 22, 24, 24, 24) sts from holder, pick up and k3 sts from shaped back neck edge, pick up and k10 sts from shaped front neck edge, k8 (10, 10, 10, 12, 12, 12) sts from holder, pick up and k10 sts from shaped front neck edge—54 (58, 58, 58, 62, 62, 62) sts. Join to work in rnds and pm for beg of rnd. Purl 1 rnd, knit 1 rnd.
Rep last 2 rnds for 8 rnds more.
Bind off loosely purlwise.
Set in sleeves. Sew side and sleeve seams with the lower 1"/2.5cm of each seam being sewn so that it is on the WS for the edge that rolls to the RS. ■

28 Sideways Knit Pullover



Sized for Small (Medium, large, 1X, 2X, 3X). Shown in size Small on page 50.

●●●○ INTERMEDIATE

Finished Measurements

- Bust 47 (49, 52, 54, 57, 60)"/119 (124.5, 132, 137, 144.5, 152)cm
- Length 23½ (24, 24½, 25, 25½, 26)"/59.5 (61, 62, 63.5, 65, 66)cm
- Upper arm 13½ (14½, 15½, 16½,

17½, 18½)"/34 (37, 39.5, 42, 44.5, 47)cm

Materials

- 5 (5, 6, 6, 6, 7) cakes of Noro/KFI Okunoshima in #2
- One pair each sizes 6 and 7 (4 and 4.5mm) needles OR SIZE TO OBTAIN GAUGE
- One 6 (4mm) circular needle, 16"/40cm long
- Stitch markers

Gauges

- 16 sts and 24 rows = 4"/10cm over St st using larger needles.
 - 21 sts and 24 rows = 4"/10cm over chart chevron lace pats using larger needles.
- TAKE TIME TO CHECK GAUGES.

Note

Back is worked from the right side seam across to the opposite side seam; front is worked from the left side seam across to the opposite side seam (see schematic drawing). Then, after sewing the shoulder seams, sleeves are picked up along the armhole edges and worked downwards to the cuff edges.

Pattern A

(worked over 15 sts)

- Row 1 (RS)** K7, yo, k1, yo, k7.
 - Row 2 (WS)** P2tog, p13, p2tog tbl.
 - Row 3 (RS)** P7, yo, k1, yo, p7.
 - Row 4** Rep row 2.
- Rep these 4 rows for pattern A.

Pattern B

(worked over 21 sts)

- Row 1 (RS)** K10, yo, k1, yo, k10.
 - Row 2 (WS)** P2tog, p19, p2tog tbl.
 - Row 3** P10, yo, k1, yo, p10.
 - Row 4** Rep row 2.
- Rep these 4 rows for pattern B.

Back

Beg at the right side seam with larger needles, cast on 91 (93, 95, 97, 99, 101) sts.

Beg Pats

- Row 1 (RS)** K26 (28, 30, 32, 34, 36) (for St st), pm, work row 1 of pattern A over 15 sts, pm, k26 (for St st), pm, work pattern B over 21 sts, k3 (for St st).
- Row 2 (WS)** P3, work row 2 of pat B, p26, work row 2 of pat A, p26 (28, 30, 32, 34, 36). Cont in St st and Pats A and B as established, and work as foll:
- Right shoulder shaping**
- Next row (RS)** K1, kfb (for shoulder inc), work as

established to end of row.
Note This inc will be worked at the shoulder edge (for selected sizes) sometimes on RS rows and sometimes on WS rows.

When working the inc on a WS row, work as foll: Work to the last 3 sts, pfb, p2.
Cont to work the shoulder inc every 8th (9th, 10th, 11th, 12th, 13th) row 4 times more—96 (98, 100, 102, 104, 106) sts. Work even until there are 42 (46, 50, 54, 58, 62) rows worked from beg.

Neck shaping

- Dec row 1 (RS)** K1, k2tog, work in pat to end.
 - Row 2** Work even.
- Rep the last 2 rows once more—94 (96, 98, 100, 102, 104) sts.

Work even for 48 rows.

Inc row (RS) K1, kfb, work in pat to end.

Next row Work even.

Rep the last 2 rows once more—96 (98, 100, 102, 104, 106) sts.

Left shoulder shaping

- Work even for 4 rows.
- Dec row (RS)** K1, k2tog (for shoulder dec), work in pat to end. Note that when this row is worked on the WS, work p2tog, p1 at end of row.
- Rep this dec row every 8th (9th, 10th, 11th, 12th, 13th) row 4 times more—91 (93, 95, 97, 99, 101) sts.
- Work even until same number of rows as first side.
- Bind off.

Front

Beg at the left side seam, work as for back up to the neck shaping.

Neck shaping

- Dec row 1 (RS)** K1, k2tog, work in pat to end.
 - Row 2** Work even.
- Rep the last 2 rows 4 times more—86 (88, 90, 92, 94, 96) sts.

Work even for 36 rows.

Inc row (RS) K1, kfb, work in pat to end.

Next row Work even.

Rep the last 2 rows 4 times more—91 (93, 95, 97, 99, 101) sts. Work the left shoulder shaping and complete as for the back.

Pre-finishing

Sew the shoulder seams.

Neckband

With RS facing and circular needle, pick up and k 42 sts from back neck edge, 10 sts from shaped front neck edge, 32 sts across center front, 10 sts from shaped front neck edge—94 sts. Join to work

in rnds and pm to mark beg of rnds.
Rnd 1 *K1, p1; rep from * around.
Rep this rnd for 5 rnds more.
Bind off in rib.

Sleeves

With larger needles, from the RS, picking up sts along one armhole edge in the St st section at the top of the sweater, pick up and k 54 (58, 62, 66, 70, 74) sts.

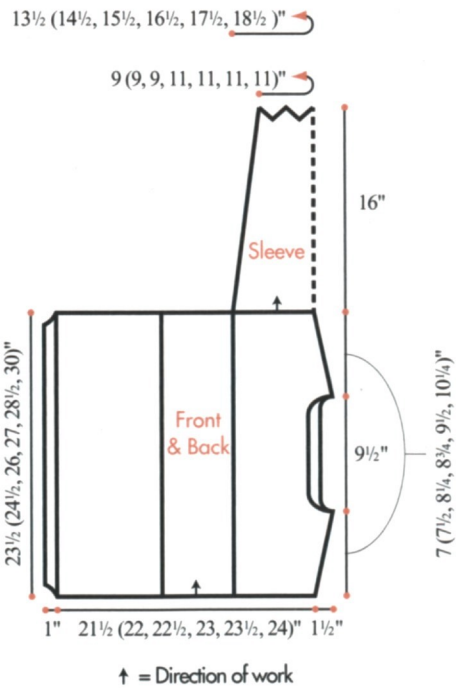
Beg with a (WS) purl row, work in St st for 9 rows.

- Dec row (RS)** K1, k2tog, k to last 3 sts, end SKP, k1.
- Rep dec row every 10th (8th, 8th, 8th, 8th, 6th) row 8 (10, 5, 10, 5, 14) times more, then every 6th row 0 (0, 7, 0, 7, 0) times more—36 (36, 36, 44, 44, 44, 44) sts.

Work even until piece measures 16"/41cm from beg.

Cuff detail

- Change to smaller needles.
- Row 1 (RS)** [P7, yo, k1, yo] 4 (4, 4, 5, 5, 5) times, end p4—44 (44, 44, 54, 54, 54) sts.
- Row 2 (WS)** P2tog, p5, [p2tog, p3] 6 (6, 6, 8, 8, 8) times, p2tog, p5—36 (36, 36, 44, 44, 44) sts.
- Row 3 (RS)** [K7, yo, k1, yo] 4 (4, 4, 5, 5, 5) times, end k4.
- Row 4** Rep row 2.



Knit 4 rows. Bind off.
Lower back trim
With RS facing and smaller needles, pick up and k 105 (109, 115, 121, 127, 133) sts evenly along lower back edge.
Row 1 (WS) K1, *p1, k1; rep from * to end.
Row 2 (RS) P1, *k1, p1; rep from * to end.
Rep these 2 rows for 4 rows more.
Bind off in rib.
Work the lower back trim in same way.

Finishing

Sew side and sleeve seams. Lightly block finished piece to measurements. ■

29 High-Low Pullover



Sized for one size, to fit Small to X-Large. Shown on page 51.

●●●● COMPLEX

Finished Measurements

- Bust 39½"/100cm
- Length 24"/61cm
- Upper arm 15"/38cm

Materials

- 9 balls of Noro/KFI Silk Garden in #503
- One pair each sizes 6 and 7 (4 and 4.5mm) needles OR SIZE TO OBTAIN GAUGE
- One size 6 (4mm) circular needle, 24"/60cm long
- Stitch markers

Gauge

16 sts and 24 rows to 4"/10cm over St st using larger needles.

TAKE TIME TO CHECK GAUGE.

Notes

1. For the construction of the sweater, foll the schematic diagrams and read the following:
After working the lower edge rib border, the back of pullover is worked with the right side composing the center neck panel to the shoulder edge. Then, the left side of back is constructed by picking up and knitting sts along the side edge of the center panel and working in rows with armhole and angled side seam shaping with rows at end to fit into the 31 sts bound-off from the rib border. The front is worked in a similar way, only with the left side comprising the center neck panel to the shoulder edge and the right side constructed by picking up and knitting sts along the side edge of the center panel.
2. To add color dimension to the vertical knitted segments, one ball is designated as "color A" and a 2nd ball (used from a different point of the color) as "color B."
3. Back is longer than front and side seams are joined leaving the designated inches/cm free for the side slits.

Back

- With smaller needles, cast on 94 sts.
- Row 1 (RS)** K2, *p2, k2; rep from * to end.
- Row 2** K the knit and p the purl sts.
- Rows 3–13** Rep row 2.
- Next row (WS)** Bind off 31 sts, work in rib to end—63 sts. Change to larger needles.

Beg body pattern

- Row 1 (RS)** With color A, k10, pm, work row 1 of chart pattern over 19 sts, pm, k5, change to color B and k5, pm, work row 1 of chart pattern over 19 sts, pm, k5. Note that the first 34 sts will be worked using color A and the last 29 sts using color B to end of the piece.
 - Row 2** With color B, p5, work row 2 of chart pat over 19 sts, p5; with color A, p5, work row 2 of chart pat over 19 sts, p10.**
- Work the last 2 rows as set up for 16 rows more.
- Dec row (RS)** K1, k2tog (side seam dec), work in pats as set up to end.
 - Rep dec row every 8th row 6 times more—56 sts.
 - Work even until there are a total of 78 rows worked above the ribbed border and piece measures approx 15½"/39cm from beg.
 - Shape right armhole**
 - Row 1 (RS)** Bind off 4 sts, work in pats to end.
 - Row 2 (WS)** Work pat to the last 2 sts, p2tog.

Row 3 (RS) K2tog, work to end.
Rows 4 and 6 Rep row 2.
Rows 5 and 7 Rep row 3.
Row 8 Rep row 2—45 sts.
Work even for 38 rows more.
Armhole measures approx 7½"/19cm.
Shape right shoulder
Row 1 (RS) Bind off 4 sts, work in pat to end.
Row 2 Work even.
Rows 3 and 4 Rep rows 1 and 2.
Row 5 Bind off 3 sts, work in pat to end.
Row 6 Work even.
Row 7 Bind off 3 sts, k2tog work in pat to the last 2 sts, end k2tog.
Bind off rem 29 sts.

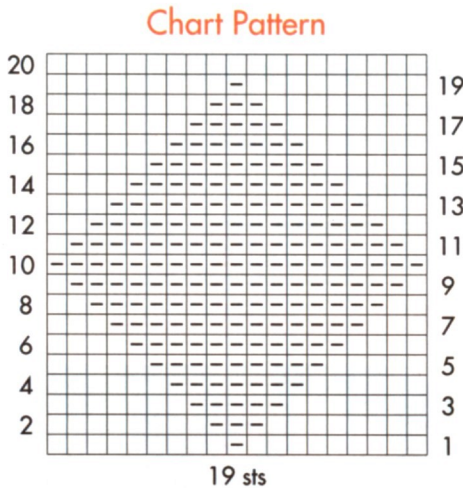
Left Back

Beg at the neck edge from the RS, pick up and k 87 sts along the center edge of the right back.
Beg with a WS row, knit 3 rows.
Row 1 K2tog, k to end.
Row 2 Purl.
Row 3 Knit.
Row 4 Purl.
Rep the last 4 rows 3 times more—83 sts.
Row 17 (RS) Bind off 21 sts, k to end—62 sts.
Row 18 (WS) Purl to the last 2 sts, p2tog.
Row 19 (RS) K2tog, k to end.
Rows 20–27 Rep (rows 18 and 19) 4 times more—52 sts.
Rows 28–31 Work even.
Short row 32 P to the last 12 sts, w&t.
Short row 33 K to end.
Short row 34 P to 8 sts before the previous wrapped st, w&t.
Short row 35 K to end.
Short rows 36–41 Rep (short rows 34 and 35) 3 times more.
Bind off all 52 sts closing up the wraps.

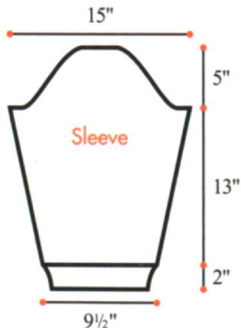
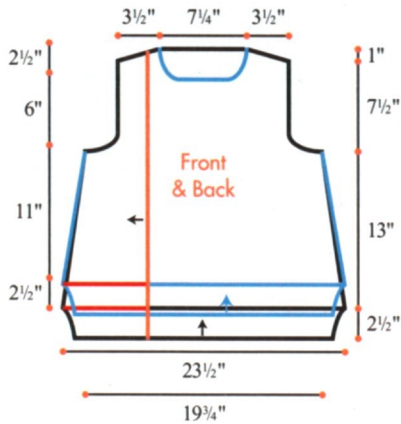
Front

Work as for back up to **.
Dec row (RS) K1, k2tog (side seam dec), work in pats as established to end.
Rep dec row every 8th row 6 times more—56 sts.
Work even until there are a total of 62 rows worked above the ribbed border and piece measures approx 13"/33cm from beg.
Shape left armhole
Work same as for right armhole shaping on the back—45 sts. Work even until armhole measures approx 6"/15cm.

Shape neck
Row 1 (RS) Work 20 sts, turn and sl rem 25 sts to a spare needle.
Row 2 (WS) P2tog, p to end.



Stitch Key
□ k on RS, p on WS
▣ p on RS, k on WS



↑ = Direction of work
▬ = Indicates stitches bound off
▬ = Indicates front
▬ = Indicates pick-up line

Cont to dec 1 st at the neck edge on the next 5 rows—14 sts. Work even for 3 rows.
Shape left shoulder
Row 1 (RS) Bind off 4 sts, k to end.
Row 2 Work even.
Rows 3 and 4 Rep rows 1 and 2.
Row 5 Bind off 3 sts, k to end.
Row 6 Work even.
Bind off rem 3 sts.
Shape right neck
Rejoin yarn from the RS to the rem 25 sts on hold and bind off 16 sts.
Then, cont to shape the right neck edge dec'ing 1 st at neck edge every row 7 times.
Bind off rem 2 sts.
Then, complete the front as for the back.

Sleeves

With smaller needles, cast on 38 sts.
Row 1 (RS) K2, *p2, k2; rep from * to end.
Cont in k2, p2 rib for 9 rows more.
Change to larger needles.
Knit 1 row, purl 1 row.
Inc row (RS) K1, M1, k to last 2 sts, M1, k1—2 sts inc'd.
Rep inc row every 8th row 10 times more—60 sts.
Work even until piece measures approx 15"/38cm from beg.
Shape cap
Bind off 4 sts at beg of next 2 rows. Then, bind off 2 sts at beg of next 10 rows.
Dec 1 st each side of next row then every other row 9 times more—12 sts. Bind off.

Finishing

Sew the ends of the left back and right front segments in place to the matching 31-st bound off section of the rib border. Sew shoulder seams. Set in sleeves. Sew sleeve seams. Sew the side seams leaving the rib edges unsewn for the side slit detail.
Neckband
With RS facing and circular needle, pick up and k32 sts from back neck edge, 44 sts from front neck edge—76 sts. Join to work in ends and pm to mark beg of rnds.
Work in k2, p2 rib for 14 rnds.
Bind off in rib.

30 Collared Vest



Sized for Small (Medium, Large). Shown in size Small on page 52.

●●●●● COMPLEX

Finished Measurements

- Bust (wrapped) 38 (40, 42)"/96.5 (101.5, 106.5)cm
- Lower edge 45 (47, 48½)"/114 (119, 123)cm
- Length (at center back) 22 (22½, 23¼)"/56 (57, 59)cm

Materials

- 3 (3, 3) hanks of Noro/KFI Miyabi in #01
- One pair size 6 (4mm) needles OR SIZE TO OBTAIN GAUGE
- Stitch holders or waste yarn

Gauge

18 sts and 26 rows to 4"/10cm over chart A or B using size 6 (4mm) needles.
TAKE TIME TO CHECK GAUGE.

Notes

Short Row Wrap & Turn (w&t)

- on RS row (on WS row)
1. Wyib (wyif), sl next st purlwise.
 2. Move yarn between the needles to the front (back).
 3. Sl the same st back to LH needle. Turn work. One st is wrapped.
 4. When working the wrapped st, insert RH needle under the wrap and work it tog with the corresponding st on needle

Note

Vest is made in two pieces with a center back seam

and has two slanted slits for armholes (see schematic).

Left Back and Front

With size 6 (4mm) needles, cast on 101 (105, 109) sts.
Setup row (WS) Knit.
Beg chart A
Short row 1 (RS) [P2, k2] 11 (12, 13) times, w&t.
Short row 2 and all WS rows K the knit and p the purl sts.
Short row 3 [K1, p2, k1] 13 (14, 15) times, w&t.
Short row 5 [K2, p2] 15 (16, 17) times, w&t.
Short row 7 [P1, k2, p1] 17 (18, 19) times, w&t.
Short row 8 K the knit and p the purl sts.
The pat st has been set up over the last 8 rows.
Cont to foll chart A as established and work as foll:
Short row 9 (RS) Work 72 (76, 80) sts (or to 4 sts past the previous wrapped st), w&t.
Short row 10 (WS) K the knit and p the purl sts.
Work the last 2 rows (always working 4 more sts past the previous wrapped st) 7 times more.
Next row Work to end of entire row on all 101 (105, 109) sts. This ends the short row shaping.

Beg body

Row 1 (WS) Work in pat across row on all sts.
Dec row 2 (RS) Work pat to the last 2 sts, k2tog.
Rows 3, 4 and 5 Work even in pat.
Dec row 6 (RS) Work pat to last 2 sts, k2tog.
Rep the (last 6 rows) 6 times more. Then work rows 1–3 once more—86 (90, 94) sts.
Divide for armhole opening - Inside edge
Next row (RS) Work 44 (46, 48) sts in pat, turn leaving rem sts unworked. Then, work on these inside edge sts as foll:
Row 1 (WS) Work even in pat.
Dec row 2 Work to last 2 sts, k2tog—1 st dec'd.
Rows 3, 4 and 5 Work even in pat.
Dec row 6 Work to last 2 sts, k2tog—1 st dec'd.
Rep (the last 6 rows) 7 (8, 9) times more—28 sts.

Work 1 row even for a total of 50 (56, 62) rows in this segment of the armhole opening. Cut yarn and sl these sts to a st holder for working later.

Outside edge

Rejoin yarn from the RS to the 42 (44, 46) sts on hold to work the outside edge as foll:
Row 1 (RS) Work even in pat.
Inc/dec row 2 (WS) Dec 1 st in pat (over the first 2 sts), work to last 2 sts, inc 1 st, work last st. Note that 1 st has been dec'd at the neck edge paired with 1 st inc'd at the armhole edge.
Rows 3, 4 and 5 Work even in pat.
Inc/dec row 6 (WS) Dec 1 st in pat over the first 2 sts, work to last 2 sts, inc 1 st, work last st.
Rep (the last 6 rows) 7 (8, 9) times more—44 (46, 48) sts rem. There should be same number of rows in this segment to match the first segment.
Close the armhole opening
Rejoin yarn from the RS to the inside edge sts and work as foll:
Row 1 (RS) Work 28 sts in pat st, pm, work the 44 (46, 48) sts from outside edge—72 (74, 76) sts.
Row 2 Work even in pat on all sts.

Chart A

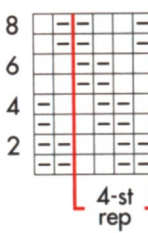
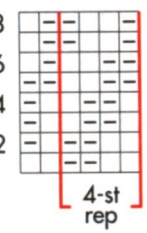
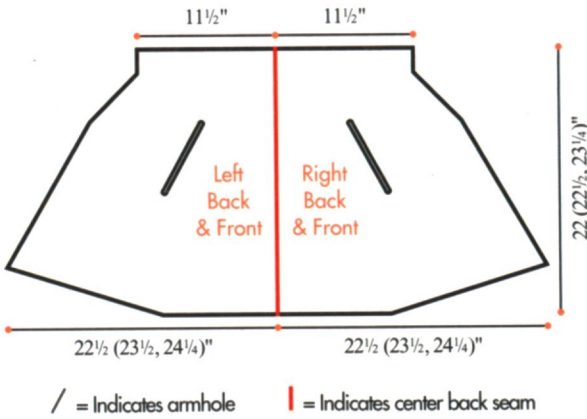


Chart B



Stitch Key
□ k on RS, p on WS
▣ p on RS, k on WS



Dec row 3 (RS) Work pat to 2 sts before marker, SKP, sl marker, k2tog, work to end.
Rep (the last 2 rows) 9 (10, 11) times more—52 sts.
Work even on these 52 sts for 15 rows. Bind off.

Right Back and Front

With size 6 (4mm) needles, cast on 101 (105, 109) sts.

Setup row (WS) Knit, cut yarn.

Beg chart B

Row 1 (RS) Sl the first 57 sts to a spare needle, reattach the yarn to the last 44 (48, 52) sts and [k2, p2] 11 (12, 13) times (row 1 of chart B).

Short row 2 (WS) K the knit and p the purl sts, then work 8 more sts in pat st, w&t.

Short row 3 and all RS rows Work in pat st to end.

Short row 4 (WS) Rep short row 2.

Short row 6 (WS) Rep short row 2.

Short row 8 (WS) K the knit and p the purl sts, then work 4 more sts in pat st, w&t.

Next row (RS) Work in pat st to end.

Cont to work in this way (as for left back and front, only with the short row shaping reversing the RS and WS rows), for 7 times more.

Last row (WS) Work to end of entire row on all 101 (105, 109) sts. This ends the short-row shaping.

Beg body

Dec row 1 (RS) SKP, work in pat to end.

Rows 2, 3 and 4 Work even in pat.

Dec row 5 (RS) Rep dec row 1.

Row 6 Work even in pat.

Rep (the last 6 rows) 6 times more. Then work rows 1 and 2 once more—86 (90, 94) sts.

Note Pm (from the RS) to mark the last 42 (44, 46) sts to designate the inside and outside edges.

Divide for armhole opening - outside edge

Inc/dec row 1 (RS) Dec 1 st in pat over first 2 sts, work to last 2 sts before the marker, inc 1 st, work 1 st and turn. Note that 1 st has been dec'd at neck edge paired with 1 st inc'd at the armhole edge and the inside edge sts have been placed on hold.

Rows 2, 3 and 4 Work even in pat.

Row 5 Rep inc/dec row 1.

Row 6 Work even in pat.

Rep the last 6 rows 7 (8, 9) times more—44 (46, 48) sts.

Inside edge

Rejoin yarn to work row from the RS.

Dec row 1 (RS) SKP, work in pat to end.

Rows 2, 3 and 4 Work even in pat.

Dec row 5 (RS) SKP, work in pat to end.

Rep the last 6 rows 7 (8, 9) times more—28 sts. There should be same number of rows in this segment to match the first segment.

Close the armhole opening

Row 1 (RS) Work the 44 (46, 48) sts from outside edge, pm, work 28 sts from inside edge—72 (74, 76) sts.

Row 2 (WS) Work even in pat on all sts.

Dec row 3 (RS) Work in pat to 2 sts before marker, SKP, sl marker, k2tog, work to end.

Rep the last 2 rows 9 (10, 11) times more—52 sts. Work even for 15 rows on these 52 sts. Bind off.

Finishing

Join the 2 pieces tog at the center back, with the last 15 rows at the neck edge joined so that seam shows on WS (for the collar turnback). Block lightly to measurements. ■

31 Triangle Vest



Sized for Small/Medium (Large, X-Large). Shown in size Small/Medium on page 53.

●●○○ EASY

Finished Measurements

- Width at lower edge 49 (52, 55½)/124.5 (132, 141)cm
- Width between armhole openings 14½ (16, 17½)/37 (40.5, 44.5)cm
- Length (at center back) 27 (29, 31)/68.5 (73.5, 78.5)cm*

*Note The finished length figures into the approx 3"/7.5cm that folds into the neck when worn.

Materials

- 2 (3, 3) cakes of Noro/KFI Kanzashi in #13
- One pair size 9 (5.5mm) needles OR SIZE TO OBTAIN GAUGE
- Size 9 (5.5mm) circular needle, 24"/60cm long (optional)
- Stitch holders

Gauge

10 sts and 19 rows = 4"/10cm over St st using size 9 (5.5mm) needles.

TAKE TIME TO CHECK GAUGE.

Note

Vest is made in one piece from lower edge to the neck with vertical slits that form the armholes. Use the circular needle to cast on the larger number of sts at the lower edge, if desired.

Vest

Beg at the lower edge, cast on 122 (130, 138) sts. Knit 3 rows.

Next row (WS) K3, p to last 3 sts, end k3.

Dec row 1 (RS) K3, k2tog, k to last 5 sts, end SKP, k3—2 sts dec'd.

Row 2 (WS) K3, p to last 3 sts, end k3.

Row 3 Knit.

Row 4 Rep row 2.

Rep last 4 rows 9 times more—102 (110, 118) sts.

Armhole openings—Right section

Next row (RS) K33 (35, 37), turn leaving rem sts on hold to be worked later.

Row 1 (WS) K3, p to the last 3 sts, end k3.

Dec row 2 (RS) K3, k2tog, k to end.

Row 3 Rep row 1.

Row 4 (RS) Knit.

Rep these last 4 rows 9 times more—23 (25, 27) sts. Leave these sts on hold to be worked later and cut yarn.

Center section

Rejoin yarn from the RS to work the next sts as foll:

Next row (RS) K36 (40, 44), turn, leaving rem sts on hold to be worked later.

Row 1 (WS) K3, p to last 3 sts, end k3.

Row 2 (RS) Knit.

Row 3 Rep row 1.

Row 4 Knit.

Rep last 4 rows 9 times more. Leave these 36 (40, 44) sts on hold to be worked later and cut yarn.

Left section

Rejoin yarn from the RS to work the next sts as foll:

Next row (RS) K33 (35, 37), turn.

Row 1 (WS) K3, p to last 3 sts, end k3.

Dec row 2 (RS) K2, k to last 5 sts, end SKP, k3.

Row 3 Rep row 1.

Row 4 (RS) Knit.

Rep last 4 rows 9 times more—23 (25, 27) sts.

Join armhole openings

Next row (WS) K3, p17 (19, 21), k2, k2tog (working the last st from the left section tog with 1 st from the center section), then k2, p30 (34, 38), k2, k2tog (working the last st from the center section tog with 1 st from the right section), k2, p17 (19, 21), k3—80 (88, 96) sts.

Row 1 (WS) K3, p to the last 3 sts, end k3.

Dec row 2 (RS) K3, k2tog, k to the last 5 sts, end SKP, k3—2 sts dec'd.

Rep the last 2 rows 29 (33, 37) times more—20 sts.

Next row (WS) K3, p to last 3 sts, end k3.

Shape top

Row 1 (RS) K3, k2tog, k3 (k2tog) twice, k3, k2tog, k3—16 sts.

Row 2 K3, p to the last 3 sts, end k3.

Row 3 K6, (k2tog) twice, k6—14 sts.

Row 4 Rep row 2.

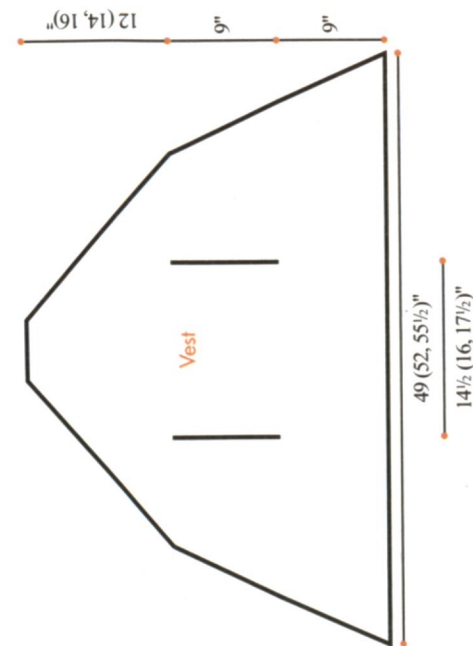
Row 5 K5, (k2tog) twice, k5—12 sts.

Row 6 Rep row 2.

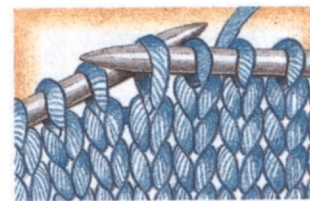
Bind off rem 12 sts.

Finishing

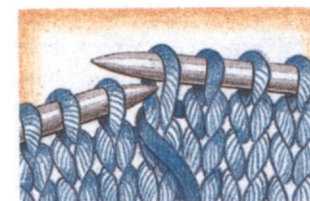
Block lightly to measurements. ■



short row w&t (knit side)



1. To prevent holes in the piece and create a smooth transition, wrap a knit stitch as follows: With the yarn in back, slip the next stitch purlwise.



2. Move the yarn between the needles to the front of the work.



3. Slip the same stitch back to the left needle. Turn the work, bringing the yarn to the purl side between the needles. One stitch is wrapped.



4. When you have completed all the short rows, you must hide the wraps. Work to just before the wrapped stitch. Insert the right needle under the wrap and knitwise into the wrapped stitch. Knit them together.

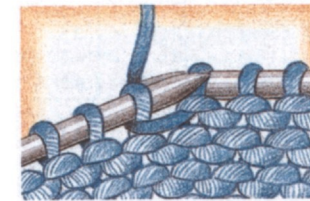
short row w&t (purl side)



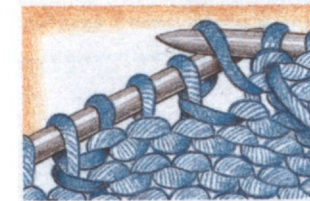
1. To prevent holes in the piece and create a smooth transition, wrap a purl stitch as follows: With the yarn at the front, slip the next stitch purlwise.



2. Move the yarn between the needles to the back of the work.



3. Slip the same stitch back to the left needle. Turn the work, bringing the yarn back to the purl side between the needles. One stitch is wrapped.



4. After working the short rows, you must hide the wraps. Work to just before the wrapped stitch. Insert the right needle from behind into the back loop of the wrap. Place it on the left needle, as shown. Purl it together with the stitch on the left needle.

STANDARDS & GUIDELINES FOR CROCHET AND KNITTING

STANDARD YARN WEIGHT

Categories of yarn, gauge ranges, and recommended needle and hook sizes

Yarn Weight Symbol & Category	0 Lace	1 Super Fine	2 Fine	3 Light	4 Medium	5 Bulky	6 Super Bulky	7 Jumbo
Type of Yarns in Category	Fingering 10-count crochet thread	Sock, Fingering, Baby	Sport, Baby	DK, Light Worsted	Worsted, Afghan, Aran	Chunky, Craft, Rug	Super Bulky, Roving	Jumbo, Roving
Knit Gauge Range* in Stockinette Stitch to 4 inches	33–40** sts	27–32 sts	23–26 sts	21–24 sts	16–20 sts	12–15 sts	7–11 sts	6 sts and fewer
Recommended Needle in Metric Size Range	1.5–2.25 mm	2.25–3.25 mm	3.25–3.75 mm	3.75–4.5 mm	4.5–5.5 mm	5.5–8 mm	8–12.75 mm	12.75 mm and larger
Recommended Needle U.S. Size Range	000–1	1 to 3	3 to 5	5 to 7	7 to 9	9 to 11	11 to 17	17 and larger
Crochet Gauge* Ranges in Single Crochet to 4 inch	32–42 double crochets**	21–32 sts	16–20 sts	12–17 sts	11–14 sts	8–11 sts	6–9 sts	5 sts and fewer
Recommended Hook in Metric Size Range	Steel*** 1.6–1.4 mm	2.25–3.5 mm	3.5–4.5 mm	4.5–5.5 mm	5.5–6.5 mm	6.5–9 mm	9–16 mm	16 mm and larger
Recommended Hook U.S. Size Range	Steel*** 6, 7, 8 Regular hook B–1	B–1 to E–4	E–4 to 7	7 to I–9	I–9 to K–10 1/2	K–10 1/2 to M–13	M–13 to Q	Q and larger

* GUIDELINES ONLY: The above reflect the most commonly used gauges and needle or hook sizes for specific yarn categories.

** Lace weight yarns are usually knitted or crocheted on larger needles and hooks to create lacy, openwork patterns. Accordingly, a gauge range is difficult to determine. Always follow the gauge stated in your pattern.

*** Steel crochet hooks are sized differently from regular hooks—the higher the number, the smaller the hook, which is the reverse of regular hook sizing

This Standards & Guidelines booklet and downloadable symbol artwork are available at: YarnStandards.com

GAUGE

Knitting gauge—the number of stitches and rows per inch—determines the size of the garment you are making. Every knitting pattern states the gauge, or “tension,” on which the sizing is based. For successful results, it is essential to test your knitting against this measurement before you start a project. Make a test swatch at least 4”/–10cm square, using the yarn and needle size called for in the pattern. Then measure your swatch using a ruler or a knit gauge tool. If the number of stitches and rows does not match the pattern’s gauge, you must change your needle size. An easy rule to follow is: TO GET FEWER STITCHES TO THE INCH/CM, USE A LARGER NEEDLE; TO GET MORE STITCHES TO THE INCH/CM, USE A SMALLER NEEDLE. Try different needle sizes until you get the proper stitch and row gauge.

GLOSSARY

bind off

To finish off an edge and keep stitches from unraveling by lifting the first stitch over the second, the second over the third, etc. (U.K.: cast off)

bind off in ribbing

Maintain the rib pattern as you bind off (knit the knit stitches; purl the purl stitches). (U.K.: cast off in ribbing)

cast on

Form a foundation row by making specified number of loops on the knitting needle.

decrease

Reduce the number of stitches in a row (i.e., knit 2 together; purl 2 together).

increase

Add to the number of stitches in a row (i.e., knit in front and back of stitch).

knitwise
Insert the needle into the stitch as if you were going to knit it.

make one

Insert tip of LH needle from front to back under the strand between the last stitch worked and the next stitch on the needle. Knit into the back loop to increase one stitch.

make one purl stitch

With the needle tip, lift the strand between the last stitch worked and the next stitch on left-hand needle and purl it. One purl stitch has been added.

no stitch

On some charts, “no stitch” is indicated with shaded spaces where stitches have been decreased or not yet made. In such cases, work

the stitches of the chart, skipping over the “no stitch” spaces.

place markers

Loop a piece of contrasting yarn or a purchased stitch marker onto the needle.

pick up and knit

(purl) Knit (or purl) into the loops along an edge.

purlwise:

Insert the needle into the stitch as if you were going to purl it.

selvage stitch

Edge stitch that helps make seaming easier.

skip

Skip specified number of stitches of the previous row and work into next stitch. (U.K.: miss)

slip, slip, knit

Slip next two sts knitwise, one at a time, to right-hand needle. Insert tip of left-hand needle into fronts of these sts from left to right and knit them together to decrease one stitch.

slip stitch

In knitting, pass a stitch from the left-hand to the right-hand needle as if to purl without working it. In crochet, insert hook through loop or edge, yarn over and pull through loop on hook. (U.K.: abbreviation—ss or sc)

work even

Continue in specified pattern without increasing or decreasing. (U.K.: work straight)

yarn over

In knitting, make a new stitch by placing the yarn over the right-hand needle. (U.K.: yfwd, yon, yrn) In crochet, wind yarn around hook. (U.K.: yoh or yrh)

SKILL LEVELS FOR KNITTING

Basic

Projects using basic stitches. May include basic increases and decreases

Easy

Projects may include simple stitches, color work and/or shaping.

Intermediate

Projects may include involved stitch patterns, color work and/or shaping.

Complex

Projects may include complex stitches, color work and/or shaping, using a variety of techniques and stitches simultaneously.

KNITTING NEEDLES

US

0

1

2

3

4

5

6

7

8

9

10

10½

11

13

15

17

19

35

METRIC

2mm

2.25mm

2.75mm

3.25mm

3.5mm

3.75mm

4mm

4.5mm

5mm

5.5mm

6mm

6.5mm

8mm

9mm

10mm

12.75mm

15mm

19

CROCHET HOOKS

US

B/1

C/2

D/3

E/4

F/5

G/6

7

H/8

I/9

J/10

K/101/2

L/11

M/13

N/15

METRIC

2.25mm

2.75mm

3.25mm

3.5mm

3.75mm

4mm

4.5mm

5mm

5.5mm

6mm

6.5mm

8mm

9mm

10mm

KNITTING ABBREVIATIONS

approx

approximately

beg

begin(ning)

CC

contrasting color

cm

centimeter(s)

cn

cable needle

cont

continue(ing)

dec

decrease(ing)

dpn

double pointed needle(s)

fol

follow(s)(ing)

g

gram(s)

inc

increase(ing)

k

knit

kfb

knit into front and back of stitch

LH

left-hand

m

meter(s)

mm

millimeter(s)

MC

main color

M1

make one (see glossary)

M1 p-st

make one purl stitch (see glossary)

oz

ounce(s)

p

purl

pat(s)

pattern(s)

pm

place marker

psso

pass slip stitch(es) over

rem

remain(s)(ing)

rep

repeat

rev

reverse stockinette stitch

RH

right-hand

RS

right side

rnd(s)

round(s)

SKP

slip 1, knit 1, pass slip stitch over

SK2P

slip 1, knit 2 stitches together, pass slip stitch over k2tog

S2KP

slip 2 stitches together knitwise, knit 1, pass slip stitches over knit 1

CROCHET ABBREVIATIONS

BP

back post

BPdc

back post double

BPsc

back post single

BPtr

back post treble

ch

chain(s)

ch-

refers to chain or space previously made (i.e., ch-1 space)

ch-sp

chain space previously made

dc double

crochet (U.K.: tr—treble)

dc2tog

double crochet 2 stitches together

dtr

double treble (U.K.: trtr—triple treble)

FP

front post

FPdc

front post double

FPsc

front post single

crochet

FPtr

front post

grp(s)

group(s)

hdc

half double

lp(s)

loop(s)

sc

single

sc2tog

single

sk

skip(ped)

sl st

slip

sp(s)

space(s)

t-ch

turning chain

tr treble

(U.K.: dtr—double

trtr

triple

trtr

triple

trtr

triple

trtr

triple

trtr

triple

trtr

triple

trtr

triple

trtr

triple

trtr

triple

trtr

triple

trtr

triple

trtr

triple

trtr

triple

trtr

triple