

ISSUE 9

# NORC

KNITTING MAGAZINE

FREE Pattern Download!  
See page 2

## 34 **COLOR TRENDS** BRIGHT & BEAUTIFUL KNITS

**VERY BERRY**  
COZY BASICS  
IN PINK,  
PLUM & PURPLE

**CLEVER COLOR**  
SCARVES & WRAPS  
IN SOLIDS AND MULTIS

**FAST AND FUN**  
6-SKEIN, QUICK-KNIT  
CHUNKY BLANKETS

U.S. \$8.99  
CAN. \$9.99\*

\*Recommended Price



Display until 12/27/16

# AT HOME

CREATE STUNNING ONE-OF-A-KIND PILLOWS

# In This Issue

NORO FALL/WINTER 2016

## Features

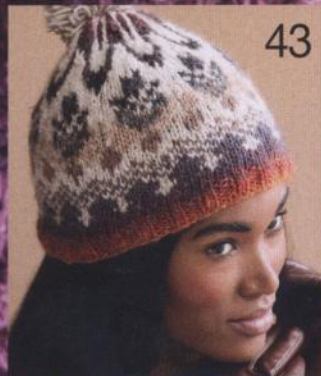
- 6 YARN UPDATE**  
Two new Noro yarns deliver softness and versatility.
- 8 PRODUCTS**  
Pattern booklets and handcrafted needles; “green” tools and accessories; eight new yarns from Noro’s sister brands.
- 12 BOOKS**  
Shawls, wraps, cables and stash-busters galore.
- 14 OVER THE RAINBOW**  
Wet-felt artist Tonya Utkina uses Rainbow Rolls to best effect.
- 16 STITCH HAPPY**  
Ongoing research shows that knitting is good for body and soul.  
By Leslie Petrovski
- 18 THRUMMING ALONG**  
Little puffs of color add interest to a pair of classic mittens.
- 64 THE YARNS**  
What we used.
- 95 STOCKISTS**

## Fashion

- 22 PERFECT PAIRINGS**  
Combining variegated and solid-color yarns creates accessories with major impact.
- 32 PILLOW TALK**  
Noro’s spectacular colorways put a home-dec basic front and center.
- 38 TOP HATS**  
Your favorite style + neutral Noro yarns = best hat ever!
- 44 MIXED BERRIES**  
Pinks and purples lend richness to the season’s top looks.
- 52 HOOKED ON COLOR**  
Unorthodox shapes and unconventional colors push the boundaries of crochet.
- 60 KNIT THREE COZY BLANKETS...**  
using only six skeins each.
- 66 PATTERN INSTRUCTIONS**

### FREE PATTERN!

Visit [www.noromagazine.com](http://www.noromagazine.com) between September 1 and December 31, 2016 (midnight EST), to download a free pattern of your choice from issues 1 through 7 of Noro Magazine. Enter coupon code FALLNoro in the shopping cart.



COVER PHOTOGRAPH BY JACK DEUTSCH. HAIR AND MAKEUP STYLED BY ELENA LYAKIR

# NORO

WELCOME  
TO

## fall/winter 2016

Create a new space filled with comfort and color

...and take it with you wherever you go. That's what Noro has in mind for Fall and Winter 2016: to surround you with a world completely unique and continually inspiring. As color trends look to nature's most magical tones, the yarns themselves explore new possibilities with lofty weights and the not-quite solids that only Noro can create. They come to life in sweet sweaters, fresh housewares and breathtaking accessories that calm and cheer both at home and away. Ranging from simple to stimulating, these thirty-five designs prove that knitting and crocheting Noro is not just a pastime: It's a lifestyle.



# NORO

KNITTING MAGAZINE

**Editorial Director**  
TRISHA MALCOLM

**Creative Director**  
JOE VIOR

**Executive Editor**  
CARLA SCOTT

**Managing Editor**  
LESLIE A. BARBER

## Editorial

Associate Editor MOLLY POHLIG  
Yarn Coordinator MATTHEW SCHRANK  
Technical Editor LORETTA DACHMAN  
Fashion Stylist JOSEFINA GARCIA  
Copywriter CHRISTINA BEHNKE  
Contributing Patterns Editors RENEE LORION,  
MARI LYNN PATRICK

## Advertising

To discuss advertising opportunities,  
call (516) 546-3600.

## SoHo Publishing Company

President ART JOINNIDES  
Chairman JAY H. STEIN  
Publisher DAVID JOINNIDES  
Controller ELAINE MOWBRAY

## HOW TO REACH US

**editorial comments:**  
e-mail [noromag@sohopublishing.com](mailto:noromag@sohopublishing.com)

**pattern inquiries:**  
Corrections are posted at [www.noromagazine.com](http://www.noromagazine.com)

Manufactured and printed in the United States of America  
Vol. 5, No. 2 (September 2016).

Noro Magazine is published two times a year.

Editorial offices: 161 Avenue of the Americas, Suite 1301, New York, NY 10013.

Published by SoHo Publishing Co., LLC, 161 Avenue of the Americas,  
Suite 1301, New York, NY 10013.

Copyright © 2016 by Knitting Fever, Inc. (KFI), P.O. Box 336, 315 Bayview  
Avenue, Amityville, NY 11701. All rights reserved.

No part of this magazine may be copied or reproduced by any means  
without written permission of the publisher. The foregoing does not  
apply to limited copies (up to 3) for purely personal, non-commercial,  
non-distributive uses such as enlargement or marking.

IMPORTANT NOTICE: Single copies \$8.99 in U.S.A.; \$9.99\* in Canada.

\*Recommended price.

# Celebrate NORO!

## NORO SILK GARDEN

### THE 20TH ANNIVERSARY COLLECTION

30 luxurious styles that  
celebrate the vibrant  
colors of NORO's  
SILK GARDEN yarn

Hardcover • ISBN: 978-1-942021-90-2 • 8½" x 10" • 144 pages • \$24.95



Also in bookstores:

**NORO LACE: 30** striking  
lace designs that highlight  
the beauty of **Noro** yarns

Hardcover • ISBN: 978-1-936096-85-5  
8½" x 10" • 144 pages • \$24.95

sixth&spring  books  
[www.sixthandspring.com](http://www.sixthandspring.com)



NORO  
fall/winter 2016  
YARN  
UPDATE

# NOR-OH!

Noro's newest  
yarns deliver  
both softness and  
versatility.

*By Leslie Petrovski*

◀ **HAKONE**

You want that cardigan, and you want it now! So step away from your size 3s, pick up those U.S. size 10.5 fatties and secure enough Hakone to get it done. Offering Mr. Noro's signature razzle-dazzle stripes in a wool single soft enough for neckwear, this quick knitter is sure to become a much-stashed Noro favorite. Available in eight colors.

100% wool;  
109yds/100g.  
Yarn weight: 5

◀ **TENNEN**

Aptly named ("tennen" means "natural"), this dream trifecta of wool, alpaca and silk—wool for meat-and-potatoes loft and memory; alpaca for softness; silk for that touch of glimmer in the sun—comes in eight subtle neutrals and unspools into an almost-300-yard nimbus of a hank. Surely there's a worsted-gauge sweater pattern in your queue that could benefit from such a natural beauty.

50% wool/25%  
silk/25% alpaca;  
273yds/100g.  
Yarn weight: 4

NORO fall/winter 2016

# DOUBLE DUTY

Form or function? That question is moot when useful items boast unique looks. By Molly Pohlig



1. Basic straight needles are anything but when handcrafted from German beechwood and topped with splashy colors, like these beauties from Knit Affair. [www.myknitaffair.com](http://www.myknitaffair.com) 2. Cozy, intricate accessories and sweaters abound in *Falkland Aran* and *Lhasa* from Debbie Bliss, while Noro's *Akita 3* collection has twelve cabled, striped concoctions. [www.knittingfever.com](http://www.knittingfever.com) 3. Japanese washi tapes from Cute Tape aren't just gorgeous gift-wrap accents; they are handy for knitting as well: Keep your place in a chart with a strip under the line you're working on. [www.cutetape.com](http://www.cutetape.com) 4. Whether you need a bobbin for a yard of yarn or a needle gauge on the go, Succaplokki's recycled knitting supplies get the job done as they bring a smile to your face. [www.etsy.com/shop/succaplokki](http://www.etsy.com/shop/succaplokki) 5. Debbie Bliss keeps your lap and workspace tidy with an apron and tea towel featuring a tape measure, knitting abbreviations and needle sizes. [www.debbieblisshome.com](http://www.debbieblisshome.com) 6. Sturdy canvas, drawstring, pockets and grommets keep your project in its place in Fringe Supply Co.'s minimalist Field Bag. [www.fringesupplyco.com](http://www.fringesupplyco.com)



1



3

Chunky yarns in a mixed palette of bright autumnal hues and wintry neutrals are just the thing to keep you knitting from one season to the next.

By Molly Pohlig

## MADE IN THE SHADE



2



4

**1. Elsebeth Lavold Misty Wool** (230yds/100g). The hint of lighter, linen-like hemp in a mostly wool blend results in a nubby, flecked fiber. Available in 16 earthy tones.

**2. Araucania Lujoso** (164yds/100g). Softness abounds in this cushiony mix of baby alpaca, extrafine merino wool and mulberry silk. In 16 deep-dyed colors.

**3. Queensland Collection Oxley** (328yds/100g). If it's warmth you're after, look no further. A 50/50 combo of wool and yak will keep you cozy in 16 shades that include both soothing neutrals and autumnal brights.

**4. Juniper Moon Farm Stargazer** (218yds/100g). The 12 shades of this llama and silk blend are perfectly suited to cozy cardigans and winding scarves.



5

**5. Ella Rae Huenique** (175yds/100g). Kaleidoscopic colors wind their way through this wool/acrylic mix. Each of the 12 colorways is a stunner and will knit up into standout winter accessories.



7



6

**6. Debbie Bliss Pure Bliss Lhasa** (109yds/50g). You'll be hard-pressed to find a yarn softer than this heavenly blend of yak and cashmere. The 12 colors, mostly neutrals, are mixed with a few berry shades.

**7. Mirasol Umiña** (247yds/100g). Cozy, cozy, cozy. The 16 jewel-like colors of 50% baby alpaca and 50% extrafine merino can be worked up quickly into cowls, hats, mittens and more.

**8. Louisa Harding Pitturissimo** (164yds/100g). It makes perfect sense that the 8 colorways of this yarn are named for artists and writers: Each variegated skein (75% wool/25% viscose) can be transformed into a gallery-worthy work of art.



8



PHOTOGRAPHS BY JACK DEUTSCH

By Leslie Petrovski



## Cozy Stash-Busting Knits

By Jen Lucas (Martingale & Co.; \$24.99)

Silk Garden Lite: Check. Balls of Taiyo: Got 'em. Whether you're a Silk Garden hoarder, a Kureyon collector or stash every new Noro release, this book has patterns—organized in sections according to yarn weight—to help you gobble up those skeins. You'll find here twenty-two pieces for DK, worsted/Aran and bulky/super-bulky projects. Of particular note: Timberline, an unfussy shawl requiring 600 yards of worsted-weight yarn, which wraps the shoulders like a hug; Aran-weight Garnett, a simple lace shawl as cozy as your favorite lapghan (only 360 yards); and cute-as-can-be one-ball-wonder Malmesbury, a DK-weight headband that fastens in the back with a button. All patterns here are showcased in solid colors. We can only imagine the spectacle Noro yarns will create.



## Cable Left, Cable Right

By Judith Durant (Storey Publishing; \$16.95)

First there's the brilliant spiral binding and 6 x 7-inch size—perfect for knitting-bag stashing. Then there's the Rosetta Stone section, which illuminates hieroglyphics like 2/2LC and those labyrinthine charts, plus detailed how-to-cable photo illustrations (with and without cable needles) and tips for nailing pretty twists every time—rationale enough to justify the cover price. Add almost a century's worth of stitch patterns, including two-color and beaded cables, and thoughts on incorporating cables into pattern designs and you have a handy reference to consult for everyday knitting or for when you decide to DIY your own Aran knit.

PHOTOGRAPHS BY JACK DEUTSCH



## Continuous Crochet

By Kristin Omdahl (Interweave/F+W; \$22.99)

No one wants to be breaking yarn, especially when it comes to crochet. Seriously, where do you hide the ends? And who wants lumpy seams in a lace garment? Omdahl has uncovered techniques that allow for continuous happy hooking while joining on the fly. To wit: The dazzling cover sweater (the Bruges lace Tigress) comes together in strips that spiral around the body and are joined as you go, while the floral-motif Isle of Capri pullover features square and triangular motifs that are attached on one or two sides, depending. There are twenty-one projects in all: some quickies (hats, cowls) as well as more involved skill builders (hairpin-lace shawl, anyone?) to boost your crochet mettle. Dig that hook into something colorful and see what going seamless is all about.



## Shawls and Wraps 2

(Sixth&Spring Books; \$24.95)

Seven years after *Vogue Knitting's* first collection debuted comes this second assemblage of shawls and wraps straight from the magazine's vaults. With access to the crème de la crème of design talent, the editors don't disappoint. There are diaphanous lace numbers both beaded and not (we're mad for Anniken Allis's beaded crescent shawl). Shawls to warm (like the plaid fringe wrap) and stoles to show off (the tulip lace wrap). Some are double-knit (the Chrysler building homage), while others make a statement with stitches (the fringed chevron shawl, perfect for a Noro yarn sub). Make no mistake, many of these show-stoppers represent a commitment of time and talent. But, oh, what an FO you'll have when you're done.

NORO  
fall/winter 2016  
HEALTH

# STITCH HAPPY

Research shows that  
knitting is good  
for the ol' noggin.

By Leslie Petrovski

**I**n 2004, anticipating long hours in the hospital following her daughter's spinal fusion, Kathy Duffy learned to knit. When she started showing up for work at Philadelphia's Interim House wearing chic FOs, clients began asking her to knit for them. Like any smart knitter, the then-therapist demurred, saying, "I won't knit for you, but I'll teach you how."

Before long, knitting became a "thing" at the longstanding drug and alcohol treatment program, with clients teaching each other and even their therapists. "Knitting fostered a new language and dialogue, and the staff got involved," explains Interim House program director Kathy Wellbank. "It leveled the playing field. They'd teach us things, we'd teach them things. It built self-esteem."

These days, attendance at Friday afternoon knitting is required at the all-women facility. Duffy and a core group of volunteers who have been with the program since the beginning help new residents and outpatients learn the moves. All in all, Duffy and Wellbank estimate, Interim House has taught some 2,000 women to knit. "Clients aren't required to knit," Wellbank says. "They are there to socialize and observe something new. But eventually they all want to learn."

In 2007, Duffy's article "Knitting Through Recovery One Stitch at a Time: Knitting as an Experiential Teaching Method for Affect Management in Group Therapy" appeared in the *Journal of Groups in Addiction & Recovery*. In it, she outlines many of knitting's psychological benefits: the calming nature of repetitive movements, the potential for creative expression, the way it fosters friendships and community, and the sense of purpose it can create. "By having their knitting available throughout the day," Duffy wrote, "clients can learn to recognize their emotions and use this technique to self-soothe rather than engage in other unhealthy behaviors. It provides clients something tangible through which to transfer the material they are learning into actual practice, and it instills hope that they can manage their addiction."

Who among us with any semblance of a Noro stash

hasn't experienced the salubrious effects of knitting? Whether we're making chemo caps, learning brioche, laughing with our knitting group or keeping our hands busy at a hospital bedside, knitting makes life better—and, increasingly, there's data to prove it.

From Yonas Geda's 2011 groundbreaking article in *The Journal of Neuropsychiatry and Clinical Neurosciences*, which demonstrated that people who read books, play games or craft have a decreased risk of mild cognitive impairment, to a study published this year in the *Clinical Journal of Oncology Nursing*, which shows that after learning to knit, even the most stressed-out nurse's burnout scores improve, knitting is being shown to be not only an enjoyable hobby, but therapeutic.

One of the more evangelical proponents of knitting for health is Betsan Corkhill, founder of Stitchlinks, a global support network and advocacy organization promulgating the concept of "therapeutic knitting." A former physiotherapist, Corkhill published a paper in 2013 in the *British Journal of Occupational Therapy* that revealed the results of an online survey in which the majority of the 3,500 knitters responding reported a significant relationship between knitting frequency and feeling calm and happy. Respondents who knit the most often said that knitting positively affected their cognitive functioning, helping them to sort through problems or think more easily. And those who knit with others were more likely to feel calmer, happier, more excited or useful than those who knit alone.

Unlike the knitting many of us do with a much-to-be-desired finished object top of mind, therapeutic knitting



## KNITTING AND ARTHRITIS

Research shows that knitting is good for the mind, but is it also good for our digits? Lucie Brosseau, a professor and researcher at the University of Ottawa's School of Rehabilitation Sciences, is conducting a pilot study with arthritic members of the Pace Setters, a senior walking and social group that knits blankets for kids at the Children's Hospital of Eastern Ontario.

Brosseau hypothesizes that knitting will help the Pace Setters with pain and stiffness related to osteoarthritis. For six weeks, participants are to log the number of hours they knit, their morning pain and stiffness levels, as well as the amount of pain and stiffness they experience before and after knitting. Inspired by a friend of her mother's who knit to relieve arthritis pain, Brosseau hopes to expand the study if initial results show benefits.

takes the focus off the finished object with the goal of getting your mind into the flow of the movement.

"It's a very useful tool," Corkhill says. "It's not just for people who are unwell; it's an important tool for maintaining well-being and dealing with our stress levels on a daily basis." In her subsequent book, *Knit for Health and Wellness*, Corkhill delves deeply into the health and wellness benefits of the craft by showing how it can be the answer to, well, just about everything.

What makes knitting so special, says Corkhill, who has run a knitting group at the Royal United Hospital's pain clinic in Bath, England, for ten years, is that it can be done alone or in a group, involves both hands and has a strong tactile component. Addressing everything from chronic pain and stress to anxiety and depression, knitting, she says, is a moveable intervention. "It's very difficult to teach people with chronic pain to meditate, because symptoms encroach," she says. "But if you give them an activity that allows them to get into a meditative state, you enable a wider population to enjoy the benefits of meditation."

Austin-based writer and wedding officiant Spike Gillespie, whose meditation practice pulled her out of a deep depression in 2013, once fired a therapist who wouldn't let her knit during sessions, among other reasons. In her book *Sit. Stay. Heal: How Meditation Changed My Mind, Grew My Heart and Saved My Ass*, Gillespie wrote, "She announced that knitting was not okay while we talked and did not give a rat's ass that it calmed me."

"Knitting is such a constant," Gillespie says now. "It's many things to me. It's mindless and mindful. I knit for myself, for others, for Facebook friends, to be of service, to keep my

hands busy, to replace bad addictions with less-bad addictions. We are all looking to control the chaos. Knitting is a chance to have some control over something."

When depression struck London-based food writer and China TV presenter James McIntosh last year, he could hardly make himself get out of bed. Bored with television and at his wit's end, he stumbled on a ball of yarn in his flat, grabbed two chopsticks and YouTube'd "how to knit." Something clicked. After knitting three sweaters, he launched his Global Knitting Party ([www.globalknittingparty.com](http://www.globalknittingparty.com)), a 15,000-mile journey through London, Germany, China and Belfast, blogging and knitting with the goal of raising money for his partner's charity, the Dr. Thomas Ernst Clinic in Kenya, which helps nomadic people access basic healthcare.

"Knitting has helped to calm my very busy head," he wrote via email. "It's allowed me to create garments that look great on me and my partner, but more importantly, it gave me a purpose during my ten-month depression. Getting out of depression is all about taking small steps. And creating a jumper—that was a big step slowly done. I was unable to leave my home until I gained confidence again, which happened [as a result of] knitting."

Though his partner is a three-hour-a-day meditator, McIntosh said it took knitting to help him learn to be present. "Ironically, I've been knitting on TV in China, teaching mindfulness to the Chinese. Knitting is a hobby for me that helps with my health, and in my spare time I knit, so why not do it on my TV shows?"

More and more organizations like Interim House are using knitting as a tool in their wellness armamentaria. Knitting Behind Bars teaches prisoners in the Pre-Release Unit at Jessup Correctional Institution in Maryland to knit. Yarn Alive, a knitting group in Shichigahama, Japan, has knit together since the devastating 2011 earthquake and tsunami. And Project Knitwell provides knitting lessons to people experiencing stressful life events. Founded by Carol Caparosa, whose infant daughter was born with congenital heart defects, Project Knitwell was inspired by Caparosa's long hours knitting in the hospital. Years later, Caparosa returned to that same pediatric intensive care unit to teach parents and older children to knit. Her work turned out to be contagious.

Today Project Knitwell volunteers bring their expertise and free knitting kits with them to Washington, D.C.-area hospitals, where they teach patients, family members and hospital staff members to knit. (Project Knitwell collaborated with the oncology nurses who participated in the "compassion fatigue" study.) Programs are also offered throughout the community at places such as Borromeo Housing, Inc. (an education and housing program for homeless young mothers), the Smith Center for Healing and the Arts, Pregnancy and Infant Loss and many others.

Project Knitwell's current executive director, Michelle Maynard, knit socks through her husband's five-and-a-half-year battle with cancer and is rolling out a memorial fundraiser, Matt's Sox Initiative, in cooperation with North Light Fibers. She sees a growing need for Project Knitwell's services. "We're expanding because there is demand for what we have to offer," she explains. "We see the difference it makes with parents and their level of stress and tension."

Interim House has experienced similar benefits. Since implementing the weekly knitting program, Kathy Wellbank says they've seen almost no aggressive behavior from their clients. "It's calmed down the community. It keeps them occupied doing something positive instead of creating drama." And, adds Kathy Duffy, "We all know how addictive knitting is."



Winter accessories  
with a difference:  
**Colorful puffs**  
of roving **thrummed**  
into classic mittens  
will keep your  
hands toasty (and  
fashionable) all  
winter long.

32

# Thrumming Along

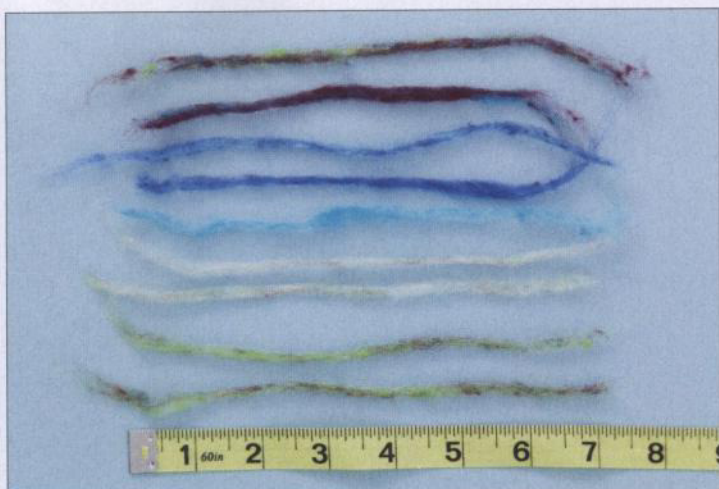
## CHERYL MURRAY

Warm and cozy mittens are knit in the round using turquoise A La Mode #17. The thrum stitches are blue, green and turquoise puffs of Rainbow Roll #1009, which are knit into the stockinette fabric. The light and soft nature of this roving yarn provides the perfect insulation for the windy, wintry days ahead.

PHOTOGRAPHS BY JACK DEUTSCH;  
HAIR AND MAKEUP STYLED BY  
ELENA LYAKIR

# Thrumming, Step by Step

Once you master the basics, embellishing these mittens is a breeze.



Before you begin to knit, you must prepare the thrumming strands. Tear the Rainbow Roll roving into strips that measure approximately 7"/18cm long.



Bring both ends of the strips together, overlapping slightly, to form a circle. Each mitten requires about 150 thrums. Make batches of thrums before knitting to speed up your work.



Pinch the circle in the middle, as shown, and twist the strands together to form a bowtie. Dampen your fingers with water to help keep the strands in place.



To work a thrum stitch, work to thrum st as indicated on the chart. Insert RH needle into next stitch; wrap thrum around the needle as shown.



Holding both ends of thrum in your left hand, wrap working yarn around the RH needle as for knitting a stitch. Working yarn should lie to the left of the thrum.



Pull both thrum and working yarn through the stitch on the LH needle, as shown, then drop stitch from LH needle to complete the knit stitch.



On the next round, knit the thrum and yarn together through back loops to lock thrum in place. Pull down gently on thrums to neaten them on the right side.



A finished mitten, shown from the wrong side.

FALL/WINTER 2016



COLOR  
YOUR  
WORLD

# Perfect Pairings



See Noro's colors  
in a **new light**.  
Juxtaposing solid  
shades against  
kaleidoscopic  
colorways unveils  
**unexpected  
facets** within each  
hue, creating  
accessories with  
**maximum impact**.

PHOTOGRAPHS BY JACK DEUTSCH. HAIR AND MAKEUP STYLED BY ELENA LYAKIR



MARI TOBITA

Vivid panes of blue, lilac, yellow and teal peek through a neutral gray grid, softly illuminating a fitted cowl with a look reminiscent of stained glass. Worked throughout in brick stitch, the pattern alternates stockinette panels knit in Kureyon colorway #359 with garter bands and slip-stitch insets in A La Mode #3 Raindance. Knit in the round, the cowl features decrease shaping at the yoke that forms a chic funnel-neck collar. Self-finished edges streamline the look.

# Perfect Pairings





#### WEI WILKINS

Knit in deep blue hues, a medley of two-color patterns—among them, hound's tooth, chevron, pinstripe and garter mosaic—recalls the look of oriental indigo patchwork. Solid sapphire Silk Garden Solo #3 Royal anchors the blue, cerulean, jade and ocher shades of Silk Garden colorway #373 and the brown, blue and deep rose hues of #279. The poncho is constructed from six long panels, each consisting of seven pattern blocks; midway through the centermost panels, the blocks narrow, creating the open-front silhouette.

2

# Perfect Pairings



3



JACQUELINE VAN DILLEN  
Knit in a simple two-color  
slip-stitch pattern, a dotted  
scarf flaunts the cool navy,  
purple, turquoise and brown  
spectrum of Silk Garden  
Lite colorway #2088. A  
coordinating solid shade,  
Silk Garden Lite Solo #2003  
Violet, offers fluctuating  
degrees of contrast, lending  
a subtle sense of motion  
to the overall patterning.  
The side edgings are knit  
intarsia-style using Silk  
Garden Lite Solo, creating  
a border continuous with  
the garter-stitch bands that  
are worked at each end.

## Perfect Pairings

SANDI PROSSER

Crisp chevrons run the length of a generous scarf, forming gentle scallops at each end. Narrow navy-shaded stripes in *A La Mode* #4 Blackberry Wine serve as striking contrast to Taiyo colorway #23, a bright blue, green and mocha rainbow highlighted with bursts of pink, orange and citron. Slip-stitch selvages form tidy edges at the sides, while narrow bands of garter stitch trim the ends. The easy-to-memorize pattern makes this a streamlined and relaxing knit.

4



# Perfect Pairings

5

## SIAN PRICE-WHITE

Double-knit patterning—worked in fine-weight yarns to create a cowl that's warm yet lightweight—explores the interplay between Silk Garden Sock colorway #8 royal, purple and green and Silk Garden Sock Solo #3 Royal. On one side, the solid shade frames an auroral color-scape; on the reverse, solid-color blocks float against a dynamic variegated backdrop. It's knit from a provisional cast-on and joined smoothly with Kitchener stitch. Modified selvage edges create a clean look.

EDNA HART

A dazzling shade of turquoise launches a hippie-chic staple, the fringed poncho, into 2016. Worked in graduated stripes, A La Mode #17 Feyway is complemented by the subdued color shifts of green, red and turquoise in Kureopatora colorway #1025. Knit in garter stitch with the wrong side facing—which helps to delineate the eyelet bands that separate each stripe—the poncho is worked seamlessly from the top down and edged with flirty multicolor fringe in Kureopatora.

NORO HOME

# PillowTalk

## Create a conversation piece.

Knit in unconventional ways, Noro's spectacular shades can make a home-décor basic the center of the room. It's that simple. What a way to **make a statement.**



PHOTOGRAPHS BY JACK DEUTSCH

IRINA POLUDNENKO

Fluctuating over a garter-block pillow, shades of saffron, orange, coral and grape in Silk Garden Lite colorway #2125 juxtapose the fuchsia, black and aqua tones of colorway #2087. A quartet of mitered triangles form each square, playing up the color contrast in alternating striped and solid panels. After the squares have been assembled for the front and back, stitches are picked up around each piece's outer edge and joined with a three-needle bind-off.

7





8

DENISE CURRAN

Simple yet striking in two-row garter stripes, this pillow alternates skeins of Kureopatora to create coordinated contrast among the saturated green, lime, red and violet shades of colorway #1019. At the front, short rows form slanted panels that are divided by four-row bands; at the back, the stripes are horizontal. The pieces are seamed in finishing.



9

**THERESE CHYNOWETH**  
Alpine Fair Isle motifs form a pastoral colorscape in shades of fresh green, gold and taupe. Worked in the round from a provisional cast-on, the pillow is knit using Silk Garden colorway #359 (for the background) and #426 (for the Fair Isle motifs). To create the double-rib opening on the back, place half of the stitches on hold as you cast on additional stitches, completing the round. Toggle closures offer a rugged finishing touch. (The pillow front is shown in the inset photo at right.)



10



# WEI WILKINS

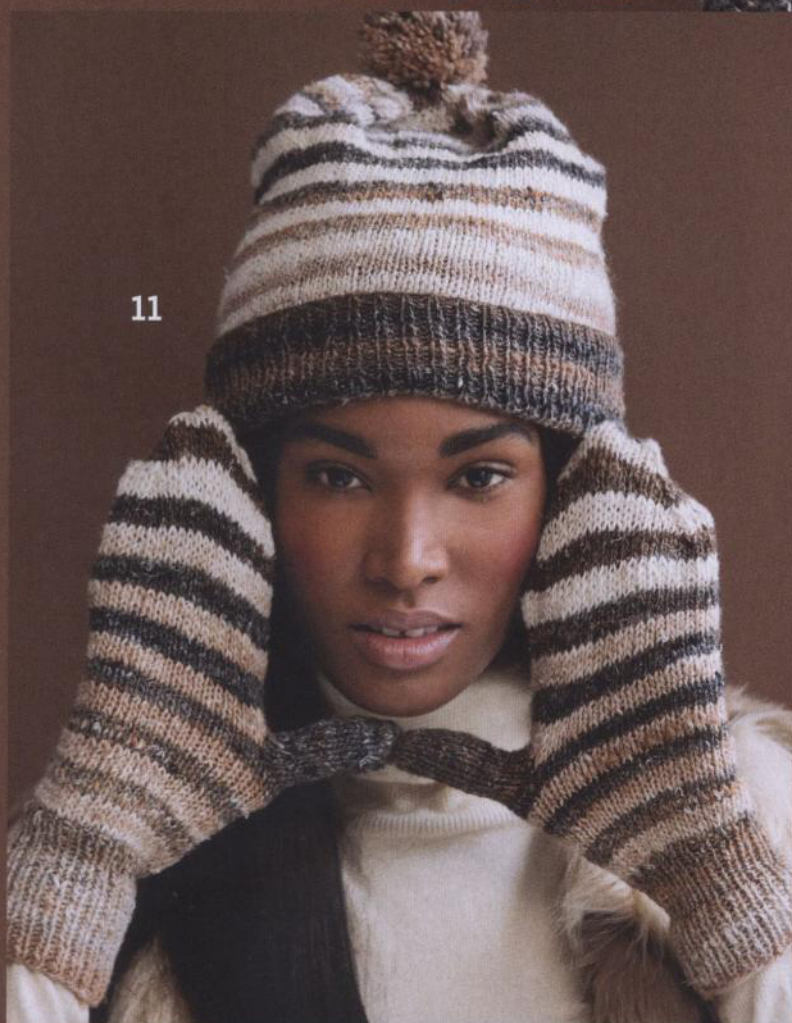
Inspired by the Chinese art of calligraphy, the block motifs worked throughout a mosaic-knit pillow signal good fortune; a starry sequence of waffle-stitch dots forms the backdrop. Knit in textured garter stitch, the reds and rusts of Silk Garden colorway #84 subtly shift against deep blue Silk Garden Solo #03 Royal. The loop button closures feature knitted covers for a polished look.

THE  
SEASON'S

# Top Hats

Winter white is so last year. Get **on trend** and knit your next hat in **goes-with-everything** natural neutrals.

11



PHOTOGRAPHS BY JACK DEUTSCH. STYLED BY ELENA LYAKIR

# The Striped Watch Cap & Mittens

YOKO HATTA

Mod stripes get a boho-chic makeover in two neutral colorways of Silk Garden Sock—deep taupe and black #267 and bright cream, tan and gray #269. The lightweight yarn lends extra slouch to the hat while creating a close fit for the matching mittens. Each piece is worked seamlessly from a snug single-rib border, with wide stockinette stripes forming the body. The hat is shaped at the top, forming a flat crown, and trimmed with a pompom.



## Top Hats

LISA CRAIG

Simple textures look bold and beautiful in chunky Hakone colorway #11 Green Mile, a marled blend of brown, gray and hunter green hues. Knit in the round, the beanie features a twisted single-rib border that flows into the main basketweave pattern of twisted-rib and reverse-stockinette blocks. The crown shaping forms a wide point, allowing for a trendy soft-slouch look. Fold the brim up to create a closer watch-cap fit.

12

## The Chunky Beanie

DEVIN COLE

Warm, earthy tones are a natural fit for a toasty trapper. The crown is worked in multiple pieces, isolating the brown, wine and sand shades of Silk Garden colorway #364: A stockinette panel forms the center, while sturdy seed stitch maintains the hat's shape at the side panels. Solid-shaded Silk Garden Solo, in coordinating colorway #13 Sienna, highlights the classic cable-and-bobble patterns at the front and earflaps, which feature pompom-tipped I-cord ties.

13

# The Earth-Toned Trapper

# Top Hats

YOKO HATTA

Score street-style points in a cabled cap: The rich texture, soft pointed shape and neon pastel shading offer a trifecta of trendy looks. Tipped with lime-green. A La Mode #8 Fusion and continuing in Silk Garden Solo colorway #1 natural, soft brown and pink, the deep cuffed brim is worked in double ribbing. Plush bobbles and horseshoe cables encircle the body of the hat through the shaped crown, which is topped with a bright pompom in A La Mode.

14

## The Cabled Cap

A close-up portrait of a woman with dark hair, wearing a textured knit hat with a large pom-pom and brown leather gloves. The hat features a Fair Isle pattern with dark, light, and burnt orange colors. She is looking slightly to the side with a soft expression. The background is a plain, light-colored wall.

AUDREY DRYSDALE

Set against a pale white-and-natural backdrop in Silk Garden colorway #269, bold Fair Isle motifs seem to smolder in colorway #349 burnt orange, wine, black and taupe. Starting with the darker shade, the fitted hat is knit seamlessly from the narrow double-rib brim and worked in cozy stranded colorwork patterning. Rounded crown shaping is worked into the topmost motif. A fluffy pom-pom, made in the lighter shade, balances the look.

15

# The Fair Isle Topper

# Mixed Berries



16

Brighten winter knits with a **soft spectrum** inspired by the prettiest colors in nature: **pink and purple**. These sweet solid shades lend **unexpected richness** to the season's top looks.

#### JACQUELINE VAN DILLEN

Graceful color, gorgeous drape: Van Dillen's rectangular shawl is knit on the bias in Silk Garden Solo colorways #17 Lavender, #10 Pink, #1 Natural and #2 Light Grey. The broad colorblocks showcase the soft nuances of each shade in a bold stripe sequence. Knit in fluid stockinette stitch, the shawl is worked with increase shaping from a two-stitch cast-on, forming one corner. Decreases shape the opposite end after the body has been completed.

PHOTOGRAPHS BY JACK DEUTSCH. HAIR AND MAKEUP STYLED BY ELENA LYAKIR



# Mixed Berries



**LAURA ZUKAITE**  
Pretty in Silk Garden Solo colorway #10 Pink, Zukaite's open-front vest is designed for a flowing fit: The fronts taper from the double-rib hemline, creating the draped silhouette. Single ribbing trims the armholes at the deep shaped shoulders. The Fair Isle front bands are knit using #2 Light Grey, with highlights in #18 Grapevine. They can be worn with the stranded side facing, as shown, or folded back to form a shawl collar for a more traditional look.

17

**MARI TOBITA**  
Abstract geometric pattern-  
ing, worked intarsia-style in  
stockinette stitch, elevates  
Tobita's oversized pullover to  
artful proportions. The front  
and back are knit in a har-  
monized, contrasting trio of  
Silk Garden Solo colorways:  
#2 Light Grey, #7 Red and  
#10 Pink. Featuring deep  
drop shoulders and a sleek  
bateau neckline, the  
poncho-like fit is offset by  
narrower sleeves worked  
in solid gray. Garter-stitch  
bands border the collar,  
cuffs and hem.



18

# Mixed Berries

**COURTNEY CEDARHOLM**  
Clean, simple lines allow a vivid hue to shine. Cedarholm's textured tee, knit in A La Mode colorway #16 Lavish Lavender, is worked in one piece from cuff to cuff, with cast-on and bound-off stitches shaping the body and sleeves. At the piece's center, an inset is knit using scrap yarn; the stitches are released onto a circular needle and bound off in finishing to create the mirrored deep-V neckline. Garter ridges add interest while forming self-finished edges.

19



YOKO HATTA

Representing an original approach to colorblocking, Hatta's cabled raglan pullover and scarf pair the tweedy tones of Silk Garden Solo with a rich array of traditional cable patterns. Colorways #8 Plum—used at the sweater's upper half—and #18 Grapevine create a subtle duotone effect, while the scarf, knit in #17 Laverder, adds bright contrast. Edged with double ribbing, the scarf features the same small cable motifs that flank the sweater's central diamond cable.

# Mixed Berries

CATHY PAYSON  
Payson keeps it simple, setting the spotlight on her textured cardigan's opulent royal colors. Knit in Silk Garden Solo colorway #17 Lavender—and bordered in a deeper shade of #8 Plum—it features a relaxed boyfriend-style fit with a classic round neckline. The background of stockinette stitch is punctuated by ridged eyelet bands, adding interest to an otherwise uncomplicated knit. Garter-stitch edgings complement the allover texture.

21

A woman with long, dark, wavy hair is shown from the waist up, leaning forward and looking down. She is wearing a long-sleeved, cream-colored knit tunic with vertical ribbing. The tunic features a pinkish-red trim along the neckline, the cuffs, and the hem. There are two small, rectangular patch pockets on the lower front, also with pinkish-red trim. She is wearing bright pink leggings. The background is a textured, greyish-blue wall.

**LAURA ZUKAITE**  
Channels of single ribbing run the length of Zukaite's slim boat-neck tunic, offering functional embellishment that complements the sporty side vents and raglan yoke. A La Mode colorway #1 Cottontail, a wear-with-anything neutral, shows off the patterning to best effect. Subtle blush detail appears at the collar and inset pockets, where the single-rib trims are tipped with tubular applied I-cord in #11 Delicate Rose. I-cord at the lower edge completes the look.

NORO CROCHET



# Hooked on Color

Unorthodox shapes  
and unconventional colors  
push the boundaries  
of crochet.

MARGIE KIEPER

Taking a cue from condo knitting, Kieper's infinity scarf stripes super-bulky Rainbow Roll colorway #1011 pink, purple and orange and fine-weight Silk Garden Sock Solo #7 Red—with opulent results. The simple pattern of double-crochet clusters, worked in two rows at a time across the right and wrong sides, flaunts the sumptuous interplay of color, loft and texture. The ends are crocheted together. A tasseled chain cinches the scarf, creating a fabulous finish.

## Hooked on Color



### CRISTINA MERSHON

Mershon's striking duster vest belies a wonderfully simple construction. Crocheted in Kureopatora colorway #1001, a high-contrast blend of black, silver, blue and seashell pink, it's worked sideways in one piece with slip stitches and crochet chains forming the armholes. The allover pattern of shell-stitch mesh alternates rows of single and double crochet, creating a structured fabric with plenty of drape. The top edge folds over naturally to form the shawl collar.

CRISTINA MERSHON

Crocheted side to side in two pieces, Mershon's poncho—cloud-light yet toasty warm in Rainbow Roll—gets added drape from the main pattern of single-crochet mesh. Bands of single-crochet ribbing form the deep lower border, transforming colorway #1015 navy, taupe and pink into sleek vertical stripes. The extra-plush turtleneck is worked separately in single-crochet rib and sewn to the neckline in finishing, while the sides are left open for ease of movement.



## Hooked on Color

26

**NIRMAL KAUR KHALSA**  
Marled shades of coral, silver, ocher and mauve glide across Khalsa's chunky scarf composed of mitered squares. Quick and easy to crochet in bulky-weight Hakone, each block is worked in extended single crochet with double decreases forming the diagonal center spine. The pattern alternates larger and smaller squares, which offsets the sequence in colorway #8 Shakespere in Love for a dynamic look. To customize the length, simply add or subtract squares.



#### DONNA CHILDS

As engaging to style as it is to crochet, Childs's spiral shawl is worked in wedges formed by single, half-double and double crochet stitches. The sawtooth edge is shaped with short rows that are offset at the beginning of the row by chain-stitch extensions; the technique creates the narrow crescent shape. A narrow single-crochet band reinforces the top edge. Silk Garden Lite colorway #2093 adds drama with bright flashes of turquoise, pink and orange against dark gray.

## Hooked on Color

### MARGIE KIEPER

Classic granny triangles play up all the angles of Silk Garden Sock colorway #415—a bright mélange of peach, pink, purple, green and copper—in Kieper's trapezoidal shawl. To form the versatile shape, six small and three large triangles are crocheted from the center out and assembled in finishing. The fine-weight gauge offers gorgeous drape when the shawl is worn about the shoulders and just the right amount of slouch when it's looped into an oversize bandana.



28


NORO **HOME**

# KNIT THREE **COZY** BLANKETS

WITH ONLY

6

SKEINS  
each!



The bold bands of lime, olive and jade in colorway #332 might catch this easy-to-knit blanket some envious glances. It's knit in a simple pattern of wide garter and stockinette blocks, with a garter-stitch border knit in as the blanket is worked. The first stitch of every row is slipped to create a trim edge.

All three blanket designs by  
RACHEL MAURER.

29

Super-bulky **Kureyon Air** makes a trio of blankets super-quick to knit. The only difference is stitch pattern and color, so **mix and match** to suit your style!

## THREE COZY BLANKETS

30

A cuddly blanket can help beat the blues, especially when it sports plenty of cool color and sleek texture. Knit in colorway #40—a mix of blue, aqua, purple, emerald and wine—it's worked in narrow alternating bands of garter stitch and k1, p3 ribbing. A knit-in border of garter stitch keeps the edges neat.

Hot pink shades meet a super-warm blanket. An overall pattern of slip-stitch ribbing creates lots of toasty texture as it marbles the bright fuchsia, orange, yellow and indigo tones of colorway #102.

Like the other styles, it features a wide garter-stitch border with a tidy slip-stitch edge worked on every row.

## The YARNS

Shown here are yarns from the Noro Collection used in this issue. Included is relevant information regarding these yarns, including, when possible, an explanation of the meaning of the yarn name.



Silk Garden Sock

(2)



Silk Garden Sock Solo

(2)



Silk Garden Lite

(3)



Silk Garden Lite Solo

(3)



A La Mode

(4)



Kureopatora

(4)



Kureyon

(4)



Silk Garden

(4)



Silk Garden Solo

(4)



Taiyo

(4)



Hakone

(5)



Kureyon Air

(6)



Rainbow Roll

(6)

**A La Mode**, 1.75oz/50g; 109yds/100m. Chic and stylish, this loosely plied yarn blends perfectly with Noro's dashing multis. 65% wool, 25% mohair, 10% polyamide.

**Hakone**, 3.5oz/100g; 109yds/100m. Famous for its hot springs, natural beauty and the view of nearby Mt. Fuji, Hakone is one of Japan's most popular destinations. Likewise, this namesake yarn is destined to become one of Mr. Noro's most sought-after. 100% wool. 8 colorways.

**Kureopatora**, 3.5oz/100g; 295yds/270m. Japanese for "Cleopatra," this lofty 100% wool yarn, with its bright, lively colorways, has a presence as striking and unforgettable as its namesake.

**Kureyon**, 1.75oz/50g; 110yds/100m. Originating with the Western "crayon," the name couldn't be more fitting: With almost as many color combinations as a 120-color box of Crayolas, this 100% wool is a true Noro classic.

**Kureyon Air**, 3.5oz/100g; 109yds/100m. This super-bulky quick-knitting single-ply creates a fabric that's toasty warm but not too heavy. 100% wool; 14 colorways.

**Rainbow Roll**, 3.5oz/100g; 300yds/274m. Constructed of a single sliver—the roving Noro spins into yarn—this gauzy cloud of soft, spongy wool has been dyed with continuous color shifts. 100% wool (roving).

**Silk Garden**, 1.75oz/50g; 110yds/100m. 45% silk, 45% kid mohair and 10% lamb's wool combine in a veritable garden of fibers. Loosely plied silk strands take dyes differently, adding a rustic touch to the elegant silken sheen.

**Silk Garden Lite**, 1.75oz/50g; 137yds/125m. Lending seasonal versatility to Noro's classic silk blend, this DK weight (which has the same 45% silk, 45% kid mohair and 10% lamb's wool content as Silk Garden) shines in an array of vibrant jewel tones.

**Silk Garden Lite Solo**, 1.75oz/50g; 137yds/125m. The distinguished Silk Garden family continues to grow with the addition of this all-season solid, a super-saturated, tonal single-ply. 45% silk, 45% mohair, 10% wool.

**Silk Garden Sock**, 3.5oz/100g; 328yds/300m. The fast-stripping colorways of Silk Garden's little sister add depth to lace and fine-weight garments. A generous strand of nylon strengthens socks. 40% wool, 25% silk, 25% nylon, 10% mohair.

**Silk Garden Sock Solo**, 3.5oz/100g; 328yds/300m. Like its monochromatic big brother, this solid counterpart to Silk Garden Sock features flecked jewel tones and neutrals in a 40% wool/25% silk/25% nylon/10% mohair blend.

**Silk Garden Solo**, 1.75oz/50g; 110yds/100m. Silk Garden's solid cousin features the same fiber content—45% silk, 45% mohair, 10% lamb's wool—in jewel and neutral tones, some flecked with tiny bursts of color.

**Taiyo**, 3.5oz/100g; 220yds/200m. Named for the sun, Taiyo can also refer to a cheery personality; its name reflects the line's super-bright colorways. Cotton (40%) is spun with 30% silk, 15% wool and 15% nylon for strength.

## 1 Brick Stitch Cowl



Shown on pages 22 and 23.

●●○○ EASY

### Finished Measurements

- Width at lower edge 51"/129.5cm
- Length (from lower edge to top of funnel neck) 16"/40.5cm

### Materials

- 3 balls of Noro/KFI A La Mode in #3 (A)
- 3 skeins of Noro/KFI Kureyon in #359 (B)
- One size 8 (5mm) circular needles, each 24"/60cm and 32"/40 long OR SIZE TO OBTAIN GAUGE
- Stitch marker

### Gauges

- 18 sts and 27 rnds = 4"/10cm over St st using size 8 (5mm) needle.
- 17 sts and 35 rnds = 4"/10cm over brick st pat using size 8 (5mm) needle.

TAKE TIME TO CHECK GAUGES.

### Brick Stitch Pattern

(multiple of 12 sts)

Rnds 1 and 3 With A, knit.

Rnds 2 and 4 With A, purl.

Rnds 5–8 With B, \*sl 3 wyib, k9; rep from \* around.

Rnds 9 and 11 With A, knit.

Rnds 10 and 12 With A, purl.

Rnds 13–16 With B, k6, \*sl 3 wyib, k9; rep from \* to last 6 sts, sl 3 wyib, k3.

Rep rnds 1–16 for brick st pat.

### Body

With longer circular needle and A, cast on 216 sts. Join, taking care not to twist sts, and place marker (pm) for beg of rnd.

Work rnds 1–16 of brick st pat 3 times.

#### Shape shoulder

Rnd 1 (dec) With A, k4, \*k2tog, k10; rep from \* to last 8 sts, k2tog, k6—198 sts.

Rnds 2 and 4 With A, purl.

Rnd 3 With A, knit.

Rnds 5–8 With B, \*sl 3 wyib, k8; rep from \* around.

Rnds 9 and 11 With A, knit.

Rnds 10 and 12 With A, purl.

Rnds 13–16 With B, k5, \*sl 3 wyib, k8; rep from \* to last 6 sts, sl 3 wyib, k3.

Rnd 17 (dec) With A, \*k3, k2tog, k6; rep from \* around—180 sts.

Rnds 18 and 20 With A, purl.

Rnd 19 With A, knit.

Rnds 21–24 With B, k5, \*sl 3 wyib, k7; rep from \* to last 5 sts, sl 3 wyib, k2.

Rnd 25 (dec) With A, \*k8, k2tog; rep from \* around—162 sts.

Rnds 26 and 28 With A, purl.

Rnd 27 With A, knit.

Rnds 29–32 With B, \*sl 3 wyib, k6; rep from \* around.

Rnd 33 (dec) With A, \*k7, k2tog; rep from \* around—144 sts.

Rnd 34 With A, purl.

Rnd 35 (dec) With A, k4, \*k2tog, k6; rep from \* to last 4 sts, k2tog, k2—126 sts.

Rnd 36 With A, purl.

Rnds 37–40 With B, k4, \*sl 2 wyib, k5; rep from \* to last 3 sts, sl 2 wyib, k1.

Rnd 41 (dec) With A, \*k2tog, k5; rep from \* around—108 sts.

Rnd 42 With A, purl.

Rnd 43 (dec) With A, k2, \*k2tog, k4; rep from \* to last 4 sts, k2tog, k2 around—90 sts.

Rnd 44 With A, purl.

Rnds 45–48 With B, \*sl 1 wyib, k4; rep from \* around.

### Funnel Collar

Rnd 1 With A, knit.

Rnds 2 and 4 With A, purl.

Rnd 3 (inc) With A, \*kfb, k4; rep from \* around—108 sts.

Rnds 5–8 With B, \*sl 2 wyib, k4; rep from \* to last

3 sts, sl 2 wyib, k1.

Rnds 9 and 11 With A, knit.

Rnds 10 and 12 With A, purl.

Rnds 13–16 With B, \*sl 2 wyib, k4; rep from around.

Rnds 17 and 19 With A, knit.

Rnds 18 and 20 With A, purl.

Rep rnds 5–20 once more, then rows 5–12 once.

Bind off all sts purlwise. ■

## 2 Patchwork Poncho



Shown on pages 24 and 25.

●●●● EXPERIENCED

### Finished Measurements

- Width at lower edge of back 41"/104cm
- Length 26"/66cm

### Materials

- 6 balls of Noro/KFI Silk Garden Solo in #3 (A)
- 8 balls of Noro/KFI Silk Garden in #373 (B)
- 3 balls of Noro/KFI Silk Garden in #279 (C)
- One pair size 8 (5mm) needles OR SIZE TO OBTAIN GAUGE
- Size E-4 (3.5mm) crochet hook

### Gauges

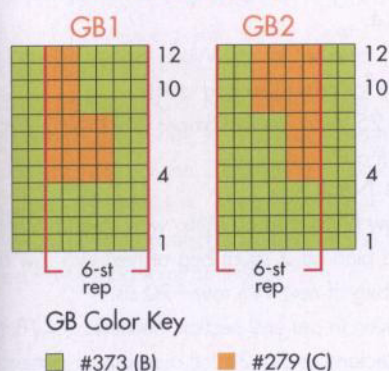
- 16 sts and 25 rows = 4"/10cm over St st and Silk Garden using size 8 (5mm) needles.
- 20 sts = 4"/10cm over most pattern stitches using size 8 (5mm) needles.

TAKE TIME TO CHECK GAUGES.

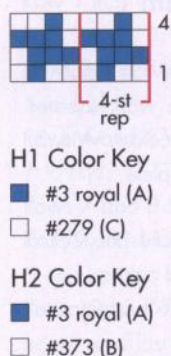
### NOTES

- 1) Poncho is worked in 6 strips. Each strip begins at the lower edge of the back and is worked to the

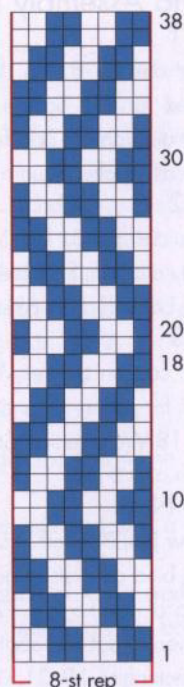
## Gold Bricks (GB)



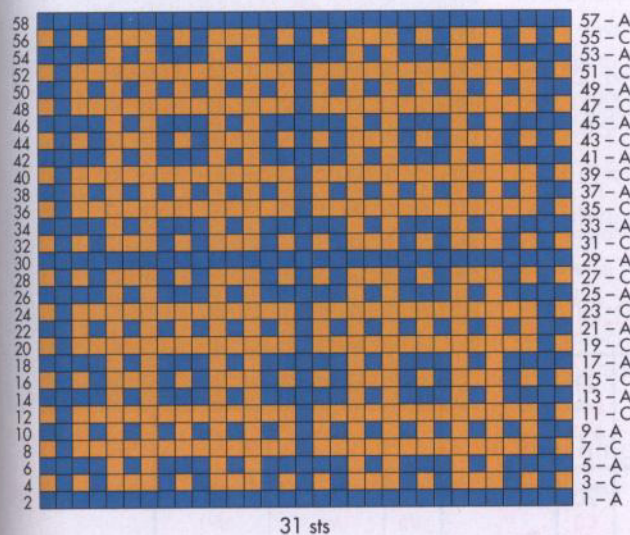
## Houndstooth (H1, H2)



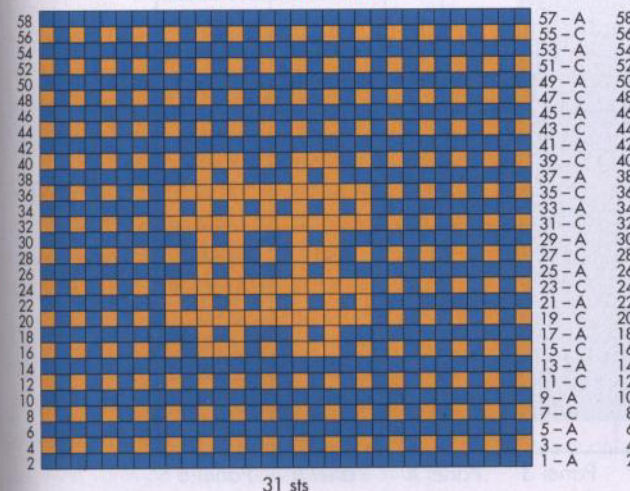
## Chevron (C1, C2, C3, C4)



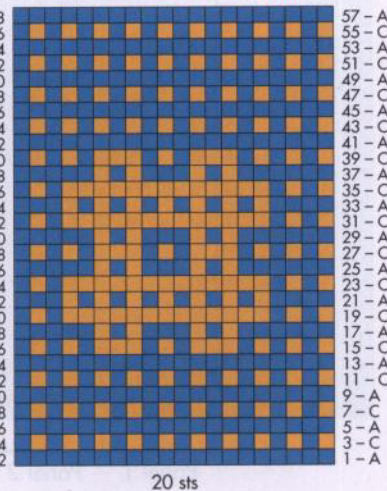
## Mosaic Chart 1 (M1)



## Mosaic Chart 2 (M2)



## Mosaic Chart 3 (M3)



lower edge of the front. After all panels are worked, they are crocheted tog with slip st to form the poncho.

- 2) Follow assembly diagram for working each square. Follow the written or charted instructions for each pattern and color scheme.
- 3) There are a total of 34 squares. Each square is 32 sts, except for the mosaic squares which are 31 sts. Each square measures approx 7 x 7" / 18 x 18cm.
- 4) There are a total of 6 rectangles that are worked at the front edges. Each rectangle is 20 sts and measures approx 4" / 10cm wide.

## STITCH GLOSSARY

### Vertical Stripes (VS)

(square over 32 sts)

**Setup row (WS)** With A, purl.

**Row 1 (RS)** K2 A, \*k2 B, k1 A; rep from \* to end.

**Row 2** \*P1 A, p2 B; rep from \* to last 2 sts, p2 A. Rep rows 1 and 2 until piece measures approx 7" / 18cm, end with a RS row.

With A, purl next row on WS.

### Woven 2-Color Pattern

(square over 32 sts; rectangle over 20 sts)

**Note:** If working the 2-color pat with *Silk Garden* only, wind 2 separate balls from one ball and be sure that each ball begins with a different color to achieve the tweed look.

**W1 Square/Rectangle** color 1 = A; color 2 = B

**W2 Square/Rectangle** color 1 = B; color 2 = B

**Row 1 (RS)** \*K1 color 1, k1 color 2; rep from \* to end.

**Row 2 (WS)** \*P1 color 1, p1 color 2; rep from \* to end.

Rep rows 1 and 2 for 7" / 18cm, end with a RS row.

### Chevrons

(square over 32 sts; rectangle over 20 sts)

**Setup row (WS)** With A, purl.

#### Beg Chevron Chart

**Note:** Chevron chart is worked in St st. Work the colors as described below and in the color key.

For square, work 8-st rep of chart 4 times.

For rectangle, work 8-st rep twice, then the first 4 sts of rep once more.

For both, work rows 1-38 or until section measures 7" / 18cm. Work colors as foll:

**C1 Square** A and B

**C2 Square** A and C

**C3 Rectangle** A and B

## C4 Small Patch A and B

**Note:** The small patch is worked separately and sewn onto square after garment is complete as foll:  
With A, cast on 16 sts.

**Setup row (WS)** With A, purl.

Work 8-st rep of Chevron Chart twice. Work rows 1–18 of chart, then bind off with A.

## Hounds Tooth

(square over 32 sts; rectangle over 20 sts)

**Setup row (WS)** With A, purl.

### Beg Houndstooth Chart

**Note:** Houndstooth chart is worked in St st. Work the colors as described below and in the color key.  
For square, work 4-st rep of chart 8 times.

For rectangle, work 4-st rep 5 times.

For both, rep rows 1–4 until section measures 7"/18cm. Work colors as foll:

H1 Square A and C

H2 Rectangle A and B

## Mosaic Patterns

There are three mosaic pats. Charts M1 and M2 are worked over 31 sts and 58 rows; Chart M3 is worked over 19 sts and 58 rows. If the section before a mosaic pat has 32 sts, dec 1 st on first row of mosaic chart and inc 1 st on last row of mosaic chart if the foll sections has 32 sts.

### Notes for all 3 charts

- 1) Use colors A and C.
- 2) Charts are worked in garter st (k ever row). The letters at the RH side of the chart represent the color you knit and also corresponds to the first and last st of the row. The other color is slipped on those rows.
- 3) When slipping sts, slip them wyib on RS rows and wyif on WS rows. Therefore, the yarn is always carried on the WS of the work.

## Solid (S-A)

With A only, work 32 sts in St st. This is used only once for Square #10.

## Gold Bricks (GB1 and GB 2)

Squares are worked with colors B and C over 32 sts and 40 rows.

### Beg GB Chart 1

**Row 1 (RS)** Work 6-st rep 5 times, work last 2 sts of chart.

Rep rows 1–12 three times, then work rows 1–4 once more.

### Beg GB Chart 2

**Row 1 (RS)** Work first 2 sts of chart, work 6-st rep 5 times.

Rep rows 1–12 three times, then work rows 1–4 once more.

## Poncho Assembly Diagram

### Panel 1

With A, cast on 32 sts. Work Chevron Chart as described for C-1 Square. Cont to work squares 2–7 foll diagram for pattern sts and colors. With B, bind off all sts after Square 7 is complete.

### Panel 2

With B, cast on 32 sts. Work squares 8–15 foll assembly diagram for pattern sts and colors.

With A, bind off all sts after Square 14 is complete.

### Panel 3

With A, cast on 32 sts. Work squares 15–17 foll diagram for pattern sts and colors.

**Square 18** Work Vertical Stripes (VS) for 3½"/9cm, end with a WS row.

### Shape Neck

**Next row (RS)** Bind off 9 sts, work to end. Cont in pat and bind off 2 sts at beg of next RS row and 1 st at beg of next RS row—20 sts.

Work even in pat until section measures 7"/18cm.

Work Rectangles 19–21 foll diagram for pattern sts

and colors.

With A, bind off after Square 21 is complete.

### Panel 4

With B, cast on 32 sts. Work squares 22–24 foll diagram for pattern sts and colors.

**Square 25** Work Vertical Stripes (VS) for 3½"/9cm, end with a RS row.

### Shape Neck

**Next row (WS)** Bind off 9 sts, work to end. Cont in pat and bind off 2 sts at beg of next WS row and 1 st at beg of next WS row—20 sts.

Work even in pat until section measures 7"/18cm. Work Rectangles 26–28 foll diagram for pattern sts and colors.

With A, bind off after Square 28 is complete.

### Panel 5

With A, cast on 31 sts. Work squares 29–35 foll diagram for pattern sts and colors.

With A, bind off all sts after Square 35 is complete.

### Panel 6

With A, cast on 32 sts. Work squares 36–42 foll diagram for pattern sts and colors.

With A, bind off all sts after Square 42 is complete.

## ASSEMBLY DIAGRAM

7 GB1 B+C	14 W1 A+B	21 W1 A+B	28 M3 A+C	35 C1 A+B	42 VS A+B
6 W1 A+B	13 H1 A+C	20 C3 A+B	27 W2 B+B	34 M1 A+C	41 W1 A+B
5 C1 A+B	12 VS A+B	19 M3 A+C	26 H2 A+B	33 W1 A+B	40 H1 A+C
4 W2 B+B	11 H1 A+C	18 VS A+B	25 VS A+B	32 W2 B+B C4 A+B	39 C2 A+C
3 M2 A+C	10 S-A	17 M1 A+C	24 W1 A+B	31 GB2 B+C	38 W2 B+B
2 W1 A+B	9 GB2 B+C	16 W2 B+B	23 C1 A+B	30 VS A+B	37 H1 A+C
1 C1 A+B	8 W2 B+B	15 H1 A+C	22 W2 B+B	29 M1 A+C	36 W1 A+B

Panel 1

Panel 2

Panel 3

Panel 4

Panel 5

Panel 6

## Finishing

With WS facing, crochet hook and A, crochet the 6 panels of patches tog with slip st. Sew C4 Small Patch in center of Square 32.

With RS facing, crochet hook and A, beg at lower edge of back at a corner, work sc evenly around entire outside edges of poncho. Block to measurements.

Fold piece at shoulders. Mark side edges approx 9"/23cm down from each shoulder. With A from RS sew a few sts tog form armholes. ■

## 3 Dot Stitch Scarf



Shown on pages 26 and 27.

●●○○ EASY

## Finished Measurements

8½ x 81"/22 x 206cm

## Materials

- 2 balls of Noro/KFI *Silk Garden Lite Solo* in #2003 (A)
- 3 balls of Noro/KFI *Silk Garden Lite* in #2088 (B)
- 2 small bobbins
- One pair each sizes 8 and 9 (5 and 5.5mm) needles OR SIZE TO OBTAIN GAUGE

## Gauge

18 sts and 32 rows = 4"/10cm over dot stitch pattern using larger needles.

TAKE TIME TO CHECK GAUGE.

## Note

The first and last 3 sts of every row are worked in garter st (k every row) with A. Wind 2 small bobbins of A to work each set of 3 sts. When changing colors, twist yarns on WS to prevent holes in work.

## Dot Stitch Pattern

(multiple of 4 sts plus 3)

Row 1 (RS) With A, knit.

Row 2 With A, purl.

Rows 3 and 5 With B, k3, \*sl 1 wyib, k3; rep from \* to end.

Rows 4 and 6 With B, p3, \*sl 1 wyif, p3; rep from \* to end.

Rows 7 and 8 Rep rows 1 and 2.

Rnds 9 and 11 With B, k1, \*sl 1 wyib, k3; rep from \* end last rep k1 instead of k3.

Rnds 10 and 12 With B, p1, \*sl 1 wyib, p3; rep from \* end last rep p1 instead of p3.

Rep rows 1–12 for dot st pat.

## Scarf

With smaller needles and A, cast on 41 sts.

Knit 6 rows.

Change to larger needles and beg with a row 3, work in dot st pat as foll:

Row 3 (RS) With small bobbin of A, k3, work row 3 of Dot St Pat to last 3 sts, with 2nd small bobbin of A, k2.

Cont in pat as established, keeping first and last 3 sts in garter st with A, through row 12, then cont to rep rows 1–12 until piece measures 80½"/204.5cm, or desired length, ending with a pat row 6 or 12.

Change to smaller needles and with A, knit 6 rows. Bind off.

## Finishing

Block piece lightly. ■

## 4 Chevron Striped Scarf



Shown on pages 28 and 29.

●●○○ EASY

## Finished Measurements

13 x 66"/33 x 167.5cm

## Materials

- 2 balls of Noro/KFI *Taiyo* in #23 (MC)
- 2 balls of Noro/KFI *La Mode* in #4 (CC)
- One pair size 9 (5.5mm) needles OR SIZE TO OBTAIN GAUGE

## Gauge

20 sts and 20 rows = 4"/10cm over chevron st using size 9 (5.5mm) needles.

TAKE TIME TO CHECK GAUGE.

## Stitch Glossary

**M1R** Insert LH needle from back to front under the strand between last st worked and next st on LH needle. K into the front loop to twist the st.

**M1L** Insert LH needle from front to back under the strand between last st worked and next st on LH needle. K into the back loop to twist the st.

## Chevron Stitch

(multiple of 12 sts plus 1)

Rows 1, 3 and 5 (RS) With MC, \*k1, M1L, k4, S2KP, k4, M1R; rep from \* to last st, k1.

Rows 2, 4 and 6 With MC, purl.

Row 7 With CC, \*k1, M1L, k4, S2KP, k4, M1R; rep from \* to last st, k1.

Row 8 With CC, purl.

Rep Rows 1–8 for Chevron St.

## Scarf

With MC, cast on 65 sts.

Rows 1 and 2 Sl 1 purlwise wyif, k1, purl to last 2 sts, k2.

## Begin Chevron Stitch

Row 1 (RS) With MC, sl 1 purlwise wyif, k1, work row 1 of chevron pat to last 2 sts; with MC, k2.

Row 2 With MC, sl 1 purlwise wyif, k1, work row 2 of chevron pat to last 2 sts; with MC, k2.

Cont in pat as established until piece measures approx 65½"/166.5cm from beg, end with row 7 of chevron pat.

Next row (WS) With MC, sl 1 purlwise wyif, knit to end.

Bind off all sts purlwise.

## Finishing

Block lightly to measurements. ■

## 5 Double-Knit Cowl



Shown on page 30.

●●●● EXPERIENCED

### Finished Measurements

- Circumference approx 38"/96.5cm
- Width 9"/23cm

### Materials

- 1 ball of Noro/KFI Silk Garden Sock Solo in #3 (A)
- 1 ball of Noro/KFI Silk Garden Sock in #8 (B)
- One size 6 (4mm) circular needle OR SIZE TO OBTAIN GAUGE
- Scrap yarn for provisional cast on.

### Gauge

22 sts and 32 rows = 4"/10cm over double-knit St st and chart pat using size 8 (5mm) needles.

TAKE TIME TO CHECK GAUGE.

### Provisional Cast On

Using scrap yarn and crochet hook, ch the number of sts to cast on plus a few extra. Cut a tail and pull the tail through the last chain. With knitting needle and yarn, pick up and knit the stated number of sts through the "purl bumps" on the back of the chain. To remove scrap yarn chain, when instructed, pull out the tail from the last crochet stitch. Gently and slowly pull on the tail to unravel the crochet stitches, carefully placing each released knit stitch on a needle.

### Notes

- 1) Each square on chart represents 4 sts and 6 rows.
- 2) Read RS rows from right to left and WS rows from left to right.

3) One strand of each color is worked across each row. When moving yarn from back to front between needles, always carry both strands of yarn tog.

4) For ease in keeping track of rows, place a marker or safety pin to mark the RS rows. While the double-knit stitch is reversible, the pattern below describes the pattern as RS and WS rows.

### Double-Knit Stockinette Stitch

Cast on twice the number of sts for the desired width.

**Row 1 (RS knit with front sts)** Using designated color on chart, \*k1, sl 1 wyif; rep from \* to end. Slide sts to other end of needle to work next row from RS.

**Row 2 (RS purl with back sts)** Using designated color on chart, \*sl 1 wyib, p1; rep from \* to end. Turn work.

**Row 3 (WS purl with front sts)** Using designated color on chart, \*sl 1 wyib, p1; rep from \* to end. Slide sts to other end of needle to work next row from WS.

**Row 4 (WS knit with back sts)** Using designated color on chart, \*k1, sl 1 wyif; rep from \* to end. Turn work.

Rep rows 1–4 for double-knit St st.

### Cowl

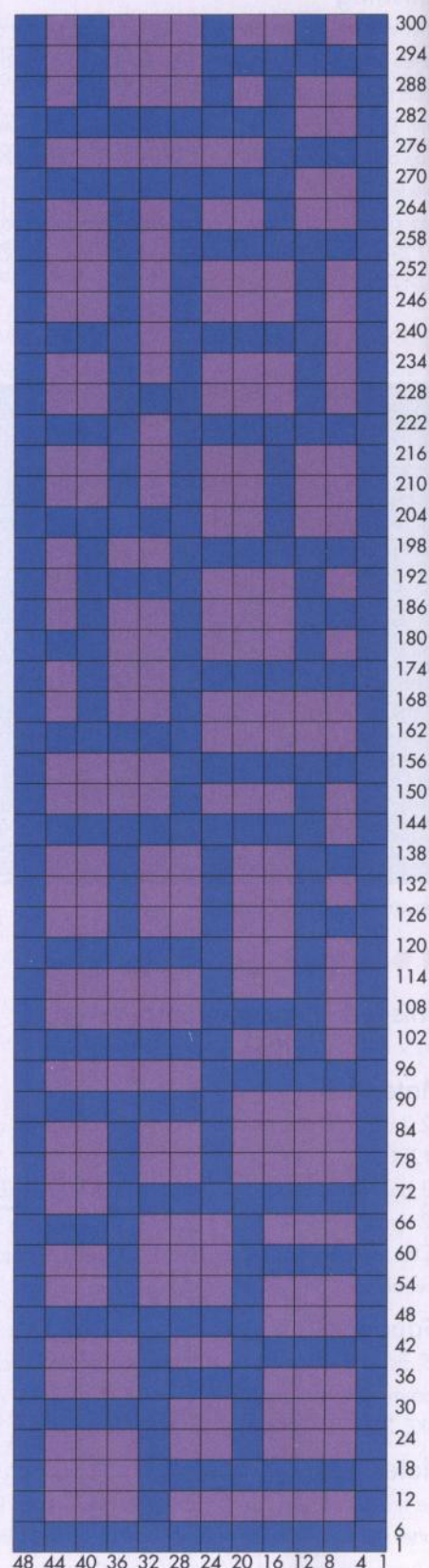
With B, cast on 96 sts using provisional cast on. Work in double-knit St st and chart pat as foll:

#### Beg chart

**Rows 1–6** With A, rep rows 1–4 of double-knit St st once, then rows 1 and 2 once more.

**Row 7 (WS purl with front sts)** [Bring both A and B strands to back and sl 1 st, p1 A] 4 times, [bring both A and B strands to back and sl 1 st, bring both A and B strands to front and p1 B] 12 times, [bring both A and B strands to back and sl 1 st, bring both A and B strands to front and p1 A] 4 times, [bring both A and B strands to back and sl 1 st, bring both A and B strands to front and p1 B] 24 times, [bring both A and B strands to back and sl 1 st, bring both A and B strands to front and p1 A] 4 times. Slide sts to other end of needle to work next row from WS.

**Row 8 (WS knit with back sts)** [k1 A, bring both A and B strands to front and sl 1 st, bring both A and B to back] 4 times, [k1 B, bring both A and B strands to front and sl 1 st, bring both A and B to back] 12 times, [k1 A, bring both A and B strands to front and sl 1 st, bring both A and B to back] 4 times, [k1 B, bring both A and B strands to front and sl 1 st, bring both A and B to back] 24 times, [k1



Color Key ■ #3 (A) ■ #8 (B)

A, bring both A and B strands to front and sl 1 st, bring both A and B to back] 4 times. Turn work.

**Row 9 (RS knit with front sts)** [K1 A, bring both A and B strands to front and sl 1, bring both A and B to back] 4 times, [k1 B, bring both A and B strands to front and sl 1, bring both A and B to back] 24 times, [k1 A, bring both A and B strands to front and sl 1, bring both A and B to back] 4 times, [k1 B, bring both A and B strands to front and sl 1, bring both A and B to back] 12 times, [k1 A, bring both A and B strands to front and sl 1, bring both A and B to back] 4 times. Slide sts to other end of needle to work next row from RS.

**Row 10 (RS purl with back sts)** [Bring both A and B strands to back and sl 1 st, bring both A and B strand to front and p1 A] 4 times, [bring both A and B strands to back and sl 1 st, bring both A and B strand to front and p1 B] 24 times, [bring both A and B strands at back and sl 1 st, bring both A and B strands to front and p1 A] 4 times, [bring both A and B strands to back and sl 1 st, bring both A and B strands to front and p1 B] 12 times, [bring both A and B strands to back and sl 1 st, bring both A and B strands to front and p1 A] 4 times. Turn work. Cont to work double-knit St st and chart pat as established through chart row 300.

## Finishing

With front sts on one needle and back sts on other needle, join sts tog with Kitchener st. ■

## 6 Fringed Cowl



Sized for Small (Medium, Large) and shown in size Small on page 31.



## Finished Measurements

- Width around top (neck) edge 28"/71cm
- Width around lower edge 50 (54, 58)"/127 (137, 147)cm
- Length (before fringe) 14½"/37cm

## Materials

- 3 (4, 4) balls of Noro/KFI *A la Mode* in #17 (A)
- 2 balls of Noro/KFI *Kureopatora* in #1025 (B)
- One size 10 (6mm) circular needle each 24"/60cm and 32"/80cm long, OR SIZE TO OBTAIN GAUGE
- Stitch marker
- Crochet hook for attaching fringe

## Gauge

16 sts and 28 rnds = 4"/10cm over garter st and *A la Mode* using size 10 (6mm) needle.

TAKE TIME TO CHECK GAUGE.

## Notes

- 1) Poncho is worked in the round from the top down.
- 2) The WS of the garment is facing you while knitting. Be sure to weave in the ends on the WS and turn inside out before attaching fringe.
- 3) When changing colors, carry yarn not in use along join to avoid cutting and reattaching colors.

## Poncho

With shorter circular needle and A, cast on 96 sts. Join, taking care not to twist sts and place marker for beg of rnd.

Knit 1 rnd, purl 1 rnd. Cont in garter st and eyelet pats as foll:

**Rnd 1 (WS)** With A, \*yo, k2tog; rep from \* around.

**Rnds 2 and 4 (WS)** With A, purl.

**Rnd 3** With A, knit.

**Rnd 5** With B, \*yo, k2tog; rep from \* around.

**Rnds 6 and 8** With B, purl.

**Rnd 7** With B, knit.

**Rnd 9** With A, \*yo, k2tog; rep from \* around.

**Rnds 10 and 12** With A, purl.

**Rnd 11** With A, knit.

**Inc rnd 13** With A, k1, [k2, M1] 46 times, k3—142 sts.

**Note:** Change to longer circular needle when sts no longer fit comfortably on the shorter needle.

**Rnd 14** With A, purl.

**Rnd 15** With B, \*yo, k2tog; rep from \* around.

**Rnds 16 and 18** With B, purl.

**Rnd 17** With B, knit.

**Inc rnd 19** With B, k5, [M1, k4] 34 times, k1—176 sts.

**Rnd 20** With B, purl.

**Rnd 21** With A, \*yo, k2tog; rep from \* around.

**Rnds 22, 24, 26 and 28** With A, purl.

**Rnds 23 and 25** With A, knit.

**Rnd 27** For size *Small* only: With A, knit;

For sizes (*Medium, Large*): With A, knit and inc [14, 28] sts evenly around—(190, 204) sts.

**Rnd 29** With B, \*yo, k2tog; rep from \* around.

**Rnds 30, 32, 34 and 36** With B, purl.

**Rnds 31, 33 and 35** With B, knit.

**Rnd 37** With A, \*yo, k2tog; rep from \* around.

**Rnds 38, 40, 42, 44 and 46** With A, purl.

**Rnds 39, 41, 43 and 45** With A, knit.

**Rnd 47** With B, \*yo, k2tog; rep from \* around.

**Rnds 48, 50, 52, 54 and 56** With B, purl.

**Rnds 49, 51, 53 and 55** With B, knit.

**Rnd 57** With A, \*yo, k2tog; rep from \* around.

**Rnds 58, 60, 62, 64, 66 and 68** With A, purl.

**Rnds 59, 61, 63, 65 and 67** With A, knit.

**Rnd 69** With B, \*yo, k2tog; rep from \* around.

**Rnds 70, 72, 74, 76, 78 and 80** With B, purl.

**Rnds 71, 73, 75, 77 and 79** With B, knit.

**Rnd 81** With A, \*yo, k2tog; rep from \* around.

**Rnds 82, 84, 86, 88, 90, 92 and 94** With A, purl.

**Rnds 83, 85, 87, 89, 91 and 93** With A, knit.

**Rnd 95** With A, \*yo, k2tog; rep from \* around.

**Rnd 96** With A, purl.

Bind off.

## Finishing

Block to lightly to measurements. Turn poncho to right side.

## Fringe

Cut 6 lengths of B each approx 16"/40.5cm long for each fringe. With 6 strands held tog, fold fringe in half and using crochet hook, pull loop through an eyelet along bound-off edge. Pull ends of strands through loop. Attach fringe in every other eyelet along lower edge of poncho. Trim evenly. ■



## 7 Directional Pillow Cover



Shown on pages 32 and 33.

●●●○ INTERMEDIATE

### Finished Measurements

Approx 20 x 20"/51 x 51cm

### Materials

- 5 hanks of Noro/KFI *Silk Garden Lite* each in #2125 (A) and #2087 (B)
- One pair size 4 (3.5mm) needles, OR SIZE TO OBTAIN GAUGE
- Spare size 4 (3.5mm) needle for 3-needle bind-off
- 20"/51cm square pillow form

### Gauge

- 22 sts and 40 rows = 4"/10cm over garter st using size 4 (3.5mm) needles.
- One square = approx 6¾"/17cm square

TAKE TIME TO CHECK GAUGE.

### 3-Needle Bind-Off

- 1) Hold right sides of pieces together on two needles. Insert third needle knitwise into first st of each needle, and wrap yarn knitwise.
- 2) Knit these two sts together, and slip them off the needles. \*Knit the next two sts together in the same manner.
- 3) Slip first st on 3rd needle over 2nd st and off needle. Rep from \* in step 2 across row until all sts are bound off.

### Note

Pillow cover is created by working 9 separate squares for each side and seaming them together. Each square is formed by 4 triangles.

### Stripe Pattern

Working in garter st, work 6 rows A, 6 rows B. Rep these 12 rows for stripe pat.

### Square (make 18)

#### Triangle 1

With A, cast on 3 sts. Knit 1 row. Beg stripe pattern and work as foll:

**Next row (inc RS)** K to last 2 sts, kfb, k1—1 st inc'd.

**Next row (WS)** Knit.

Cont in stripe pattern, rep last 2 rows 15 times more—19 sts.

**Next row (dec RS)** K to last 3 sts, k2tog, k1—1 st dec'd.

**Next row (WS)** Knit.

Rep last 2 rows 14 times, then rep RS row once more—3 sts.

**Next row (WS)** K3tog—1 st left on needle. Cut A.

#### Triangle 2

**Next row** With RS facing and B, k1, turn and pick up and k 27 sts along left shaped edge (red line on diagram) of Triangle 1—28 sts. Knit 1 row on WS.

**Next row (dec RS)** K1, ssk, k to end—1 st dec'd.

**Next row (WS)** Knit.

Rep last 2 rows 23 times more, then rep RS row once more—3 sts.

**Next row (WS)** K3tog—1 st on needle. Do not cut B.

#### Triangle 3

**Next row** With RS facing and A, pick up and k 27 sts along left straight edge (red line on diagram) of Triangle 2—28 sts. Knit 1 row. Beg stripe pat and work as foll:

**Next row (dec RS)** K1, ssk, k to end—1 st dec'd.

**Next row (WS)** Knit.

Rep last 2 rows 23 times more, then rep RS row once more—3 sts.

**Next row (WS)** K3tog—1 st left on needle. Cut B.

#### Triangle 4

**Next row** With RS facing and A, pick up and k 27 sts along left straight edge (red line on diagram) of Triangle 3—28 sts. Knit 1 row.

**Next row (dec RS)** K1, ssk, k to end—1 st dec'd.

**Next row (WS)** Knit.

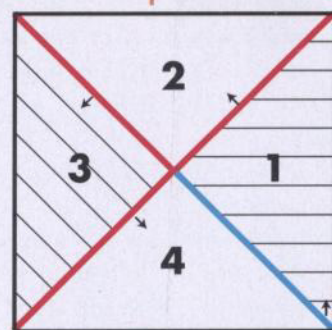
Rep last 2 rows 23 times more, then rep RS row once more—3 sts.

**Next row (WS)** K3tog. Fasten off last st. Cut yarn leaving long tail. Using tail, seam Triangle 4 to Triangle 1 (blue line on diagram).

### Finishing

Block squares to measurements. Arrange squares in 3 rows of 3 for each side and seam together.

## Square



approx 6¾"

↑ = Direction of work    — = Seamed edge  
— = Picked-up edge

With RS facing and either color, pick up and k 114 sts along one edge of front. Repeat for back, join edges using 3-needle bind-off. Repeat for rem 3 edges, inserting form before final edge is joined. ■

## 8 Short Row Pillow Cover



Shown on page 34 and 35.

●●●○ INTERMEDIATE

### Finished Measurements

Approx 20 x 20"/51 x 51cm

### Materials

- 5 skeins of Noro/KFI *Kureopatora* in #1019
- One size 8 (5mm) circular needles, 24"/60cm long, OR SIZE TO OBTAIN GAUGE
- 20"/51cm square pillow form

### Gauge

16 sts and 32 rows = 4"/10cm over garter st using

size 8 (5mm) needles.

TAKE TIME TO CHECK GAUGE.

## Short Row Wrap & Turn (w&t)

on RS row (on WS row)

- 1) Wyib (wyif), sl next st purlwise.
- 2) Move yarn between the needles to the front (back).
- 3) Sl the same st back to LH needle. Turn work. One st is wrapped.
- 4) When working the wrapped st, insert RH needle under the wrap and work it tog with the corresponding st on needle.

## Notes

- 1) Two skeins in the same colorway are used to create the stripes. One is designated A and the other B. Be sure to start A and B at different points in the color repeat for contrasting stripes.
- 2) Back is rotated 90 degrees and sewn to front so that front stripes are horizontal and back stripes are vertical.

## Front

With A, cast on 76 sts. Knit 2 rows.

**\*Next row (RS)** With B, k74, w&t,

**Next row (WS)** K to end.

**Next 2 rows** With A, k to 2 sts before previously wrapped st, w&t, k to end.

**Next 2 rows** With B, k to 2 sts before previously wrapped st, w&t, k to end.

Rep last 4 rows until there are 2 sts left in row.

Choose desired color, either A or B, for diagonal stripe and knit 4 rows over all sts, picking up wraps. Cut yarn. Join A ready to work a WS row.

**Next row (WS)** With A, p2, w&t.

**Next row (RS)** With A, k2.

**Next 2 rows** With B, p to 2 sts beyond previously wrapped st, w&t, p to end.

**Next 2 rows** With A, p to 2 sts beyond previously wrapped st, w&t, p to end.

Rep last 2 rows until a full row over all 76 sts is worked, ending with a WS row.\*



Rep from \* to \* once more. Bind off.

## Back

With A, cast on 76 sts. \*Knit 2 rows with A, 2 rows with B; rep from \* until piece measures same as width of front. Bind off.

## Finishing

Rotate back so that stripes are vertical.

Sew 3 sides of front to back. Insert pillow form and sew 4th side. ■

## 9 Fair Isle Pillow Cover



Shown on page 36.



## Finished Measurements

Approx 19 x 19"/48.5 x 48.5cm

**Note** Cover will stretch to fit 20"/51cm square form.

## Materials

- 4 skeins of Noro/KFI Silk Garden in #359 (MC)
- 2 skeins of Noro/KFI Silk Garden in #426 (CC)
- One each size 6 (4mm) circular needles, 16 and 32"/40 and 80cm long OR SIZE TO OBTAIN GAUGE
- Stitch holder or waste yarn
- 20"/51cm square pillow form
- Four 6"/15cm toggle button and loop pairs (sample used Mibo Sew On Faux Leather Tab Closures in Brown)

## Gauge

18 sts and 24 rnds = 4"/10cm over St st using size 6 (4mm) needles.

TAKE TIME TO CHECK GAUGE.

## Provisional Cast On

Using scrap yarn and crochet hook, ch the number of sts to cast on plus a few extra. Cut a tail and pull the tail through the last chain. With knitting needle and yarn, pick up and knit the stated number of sts through the "purl bumps" on the back of the chain. To remove scrap yarn chain, when instructed, pull out the tail from the last crochet stitch. Gently and slowly pull on the tail to unravel the crochet stitches, carefully placing each released knit stitch on a needle.

## 3-Needle Bind-Off

- 1) Hold right sides of pieces together on two needles. Insert third needle knitwise into first st of each needle, and wrap yarn knitwise.
- 2) Knit these two sts together, and slip them off the needles. \*Knit the next two sts together in the same manner.
- 3) Slip first st on 3rd needle over 2nd st and off needle. Rep from \* in step 2 across row until all sts are bound off.

## Notes

- 1) Pillow is worked in the round to the back opening, then half of the sts are placed on hold. Additional sts are cast on for the remaining half. Top and bottom seams are closed using 3-needle bind-off.
- 2) Carry color not in use loosely up side of work, twisting colors every few rounds.
- 3) When changing colors, twist yarns on WS to prevent holes in work.

## Pillow Cover

With longer circular needle and MC, cast on 168 sts using a provisional cast-on. Join, taking care not to twist sts, and place marker (pm) for beg of rnd. Knit 5 rnds.

### Beg chart 1

Work rnds 1–3 of chart 1.

With MC, knit 6 rnds.

### Beg chart 2

Rnd 1 Work 12-st rep 14 times around.

Cont to work chart 2 in this way through rnd 25.

With MC, knit 6 rnds.

### Beg chart 1

Work rnds 1–3 of chart 1.

With MC, knit 6 rnds.

### Beg chart 3

Rnd 1 Work 12-st rep 14 times around.

Cont to work chart 3 in this way through rnd 11.

With MC, knit 6 rnds.

## Beg chart 1

Work rnds 1–3 of chart 1.

With MC, knit 1 rnd. Cut MC.

## Separate for back opening

With MC and shorter circular needle, cast on 86 sts for overflap.

**Next rnd** Slip first 84 sts of rnd to st holder or waste yarn, then working over 86 sts on shorter circular needle, work as foll: k2, [p2, k2] 21 times, k84 sts to end of rnd—170 sts.

Work 7 rnds more, working in rib over 86 sts as established and St st over rem 84 sts.

**Next (dec) md** K15, k2tog, k54, k2tog, k to end of rnd—168 sts.

## Beg chart 1

Work rnds 1–3 of chart 1.

With MC, knit 6 rnds.

## Beg chart 3

**Rnd 1** Work 12-st rep 14 times around.

Cont to work chart 3 in this way through rnd 11.

With MC, knit 6 rnds.

## Beg chart 1

Work rnds 1–3 of chart 1. Cut CC.

With MC, knit 5 rnds.

Turn work inside out. Slip first 84 sts to shorter circular needle. Join edge using 3-needle bind-off.

## Ribbed underflap

Place 84 sts from waste yarn or st holder on shorter circular needle ready to work a WS row. Working back and forth, work as foll:

**Row 1 (WS)** P1, \*k2, p2; rep from \* to last 3 sts, k2, p1.

**Row 2** K1, \*p2, k2; rep from \* to last 3 sts, p2, k1.

Rep last 2 rows twice more, then rep WS row once more. Bind off in rib.

## Finishing

Carefully remove provisional cast-on and place first 84 sts on one circular needle and rem 84 sts on 2nd circular needle. Join edge using 3-needle bind-off. Overlap ribbed flaps and sew side edges.

Sew toggles approx 3"/7.5cm from ribbed edges, with one approx 3½"/9cm from each edge and the rem two spaced evenly between. ■

## Materials

- 4 skeins of Noro/KFI Silk Garden Solo in #3 (A)
- 4 skeins of Noro/KFI Silk Garden in #84 (B)
- One pair each sizes 8 and 9 (5 and 5.5mm) needles, OR SIZE TO OBTAIN GAUGE
- One size D/3 (3.25mm) crochet hook
- Four 7/8"/22mm buttons
- 20"/51cm square pillow form
- Stitch markers

## Gauge

16 sts and 32 rows = 4"/10cm over waffle pat using smaller needles.

TAKE TIME TO CHECK GAUGE.

## Notes

- 1) One row of the chart represents 2 rows of knitting. Read the RS rows from right to left and the WS rows from left to right. Only one color is worked over 2 rows, slipping the other color.
- 2) Chart is worked in garter st (knit every row). The letters at the RH side of the chart represent the color you will be knitting and also corresponds with the first and last st of the row. The other color will be slipped on those 2 rows.
- 3) When slipping sts, slip them wyib on RS rows and wyif on WS rows. Therefore, the yarn is always carried on the WS of the work.

## Waffle Pattern

(over an even number of sts)

**Rows 1 and 2** With A, knit.

**Row 3** With B, \*k1, sl 1 wyib; rep from \* to end.

**Row 4** With B, \*k1, sl 1 wyif; rep from \* to end.

Rep rows 1–4 for waffle pat.

## Cover

With smaller needles and B, cast on 79 sts. Knit 10 rows. Change to larger needles.

Work rows 1–4 of waffle pat 6 times, then work rows 1 and 2 once more.

## Beg chart

**Row 1 (RS)** With B, [k1, sl 1 wyib] 6 times, place marker (pm), work 25 sts of chart, pm, [sl 1 wyib, k1] twice, sl 1 wyib, pm, work 25 sts of chart, pm, [sl 1 wyib, k1] 6 times.

Cont as established, working waffle pat on either side and between chart reps, until 58 rows of chart have been worked.

Work in waffle pat for 42 rows.

Work 58 rows of chart as before.

Work in waffle pat for 10 rows.

Work 58 rows of chart as before.

Chart 3

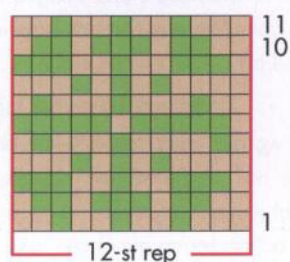


Chart 2

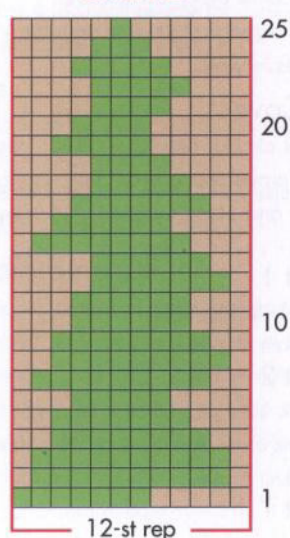
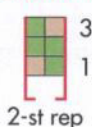


Chart 1



## Color Key

- #359 (MC)
- #426 (CC)

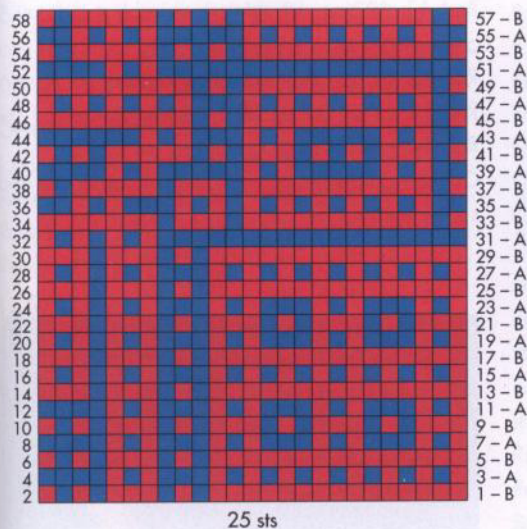
## 10 Mosaic Pillow Cover



Shown on page 37.

## Finished Measurements

Approx 20 x 20"/51 x 51cm (buttoned)



25 sts



Color Key  
 ■ #3 (A)  
 ■ #84 (B)

Work in waffle pat for 42 rows.

Work 58 rows of chart as before.

Work in waffle pat for 4 rows. With A, bind off.

**Button covers** (make 4)

With larger needles and B, cast on 6 sts. Knit 1 row, purl 1 row.

**Inc row (RS)** K1, M1, k to last st, M1, k1—2 sts inc'd. Purl 1 row.

Rep last 2 rows once more—10 sts.

Knit 1 row, purl 1 row.

**Dec row (RS)** K1, k2tog, k to last 3 sts, ssk, k1—2 sts dec'd. Purl 1 row.

Rep last 2 rows once more—6 sts. Bind off. Cut B, leaving a long tail.

Thread tail around edge of button cover. Place button in middle of cover and pull tail to draw in edges, use tail to sew edges in place.

## Finishing

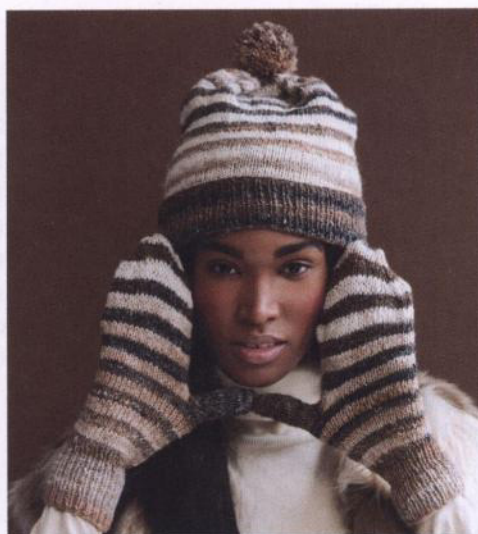
Block cover lightly to measurements. Fold cover so that cast-on and bound-off edges come together at center back and overlap approx 4"/10cm with bound-off edge on top. With crochet hook and A, slip st side seams, working through all thicknesses at overlap.

Place marker for 4 buttons as foll: counting up 4"/10cm from cast-on edge, place first and last button approx 3½"/9cm in from each side edge and the other 2 spaced evenly between. Sew on buttons at markers.

## Button Loops

With crochet hook and A, ch16, then work a sl st in each ch. Fasten off, leaving long tail for sewing. Form a button loop and use tail to secure to bound-off edge opposite first button. Work 3 more loops in same way. ■

## 11 Striped Slouch Hat and Mittens



Sized for Adult and shown on pages 38 and 39.

●●○○ EASY

## Finished Measurements

### Hat

- Head circumference 18½"/47cm
- Length 11½"/29cm (with ribbed brim folded in half)

### Mittens

- Hand circumference 7½"/19cm
- Length 10½"/26.5cm

## Materials

- 1 ball each of Noro/KFI *Silk Garden Sock* in #267 (A) and 269 (B)
- One each size 3 and 4 (3.25 and 3.5mm) circu-

lar needles, 16"/40cm long, OR SIZE TO OBTAIN GAUGE

- One set (5) each size 3 and 4 (3.25 and 3.5mm) double-pointed needles (dpn), OR SIZE TO OBTAIN GAUGE

- Scrap yarn for mittens
- Stitch marker

## Gauge

24 sts and 32 rnds = 4"/10cm over St st using larger needles.

TAKE TIME TO CHECK GAUGE.

## Stripe Pattern

Work in St st (k every rnd) as foll: \*4 rows A, 4 rows B; rep from \* (8 rows) for stripe pat.

## Hat

With smaller circular needle and B, cast on 110 sts. Join, taking care not to twist sts and place marker for beg of rnd. Work in k1, p1 rib for 4½"/11.5cm. Change to larger circular needle and work in St st and stripe pat until piece measures 11"/28cm from beg, end with a WS row. Cont in stripe pat as foll:

### Shape top

**Next rnd** [K2tog, k9] 10 times—100 sts.

**Next rnd** [K8, k2tog] 10 times—90 sts.

**Note:** Change to dpn when sts no longer fit comfortably on circular needle.

Cont in this way to dec 10 sts evenly on every rnd until 10 sts rem. Cut yarn and draw through rem sts. Pull sts tog tightly and secure.

## Finishing

With B, make a 2"/5cm pompom and sew to top of hat.

## Right Mitten

With smaller dpn and B, cast on 44 sts. Divide sts evenly over 4 needles (11 sts per needle). Join, taking care not to twist sts and place marker for beg of rnd. Work in k1, p1 rib for 3"/7.5cm. Change to larger dpn and work in St st and stripe pat for 24 rnds—piece measures 6"/15.5cm from beg. Cont in stripe pat as foll:

### Thumb opening

**Next rnd** K next 5 sts with scrap yarn, sl 5 sts just worked back to LH needle, with working yarn, k same 5 sts, k to end of rnd.

Cont in pat for 23 rnds more, ending with 4 rnds B.

### Shape top

**Next rnd** [K1, ssk, k17, k2tog] twice—4 sts dec'd. Knit 1 rnd.

**Next rnd** [K1, ssk, k15, k2tog] twice. Knit 1 rnd.

**Next rnd** [K1, ssk, k13, k2tog] twice.

Knit 1 rnd. Cont in this way to dec 4 sts every other rnd 4 times more—16 sts.

**Next rnd** [K1, ssk, k3, k2tog] twice.

**Next rnd** [K1, ssk, k1, k2tog] twice.

**Next rnd** [K1, k3tog] twice. Cut yarn and draw through rem 4 sts. Pull sts tog and secure.

## Thumb

With RS facing larger dpn, pick up the right legs of the 5 sts directly under scrap yarn. Turn piece upside down. With a second dpn, pick up right legs of sts directly above scrap yarn—5 sts on each needle. Join B and work as foll:

**Rnd 1** With first needle, k4, with next needle k1, pick up and k 1 st at gap, k2 from 2nd needle, with next needle k3, pick up and k 2 sts from gap. There are 4 sts on needles 1 and 2 and 5 sts on needle 3—13 sts in total.

Cont in St st with B only for 2¾"/7cm.

**Last rnd** K1, [k2tog] 6 times. Cut yarn and draw through rem 7 sts. Pull tog and secure.

## Left Mitten

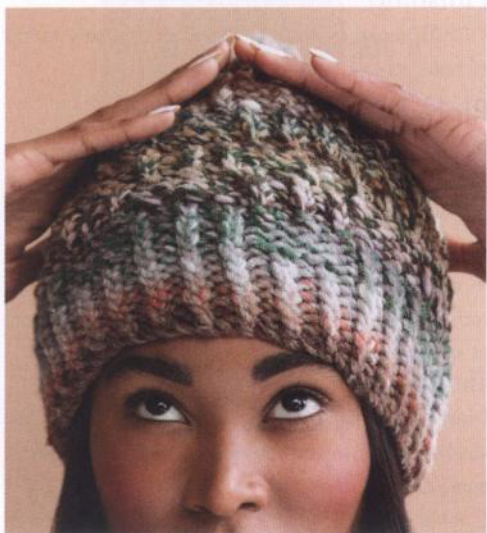
Work as for right mitten to thumb opening.

### Thumb opening

**Next rnd** K17, k next 5 sts with scrap yarn, sl 5 sts just worked back to LH needle, with working yarn, k same 5 sts, k to end of rnd.

Complete as for right mitten. ■

## 12 Basketweave Beanie



Sized for Adult and shown on page 40.

●●●○ INTERMEDIATE

## Finished Measurements

- Head circumference 18½"/47cm
- Length 11½"/29cm

## Materials

- 1 skein of Noro/KFI *Hakone* in #11
- One set (5) double-pointed needles (dpn) each sizes 10½ and 11 (7 and 8mm) needles, OR SIZE TO OBTAIN GAUGE

## Gauge

13 sts and 16 rnds = 4"/10cm over basketweave pat using larger needles.

TAKE TIME TO CHECK GAUGE.

## Basketweave Pattern

(multiple of 10 sts)

**Rnds 1–4** \* [K1 tbl, p1] 3 times, p4; rep from \* around.

**Rnds 5–8** \* P5, [k1 tbl, p1] 2 times, k1 tbl; rep from \* around.

Rep rnds 1–8 for basketweave pat.

## Hat

With smaller needles cast on 60 sts.

Divide sts evenly over 4 needles (15 sts per needle). Join, taking care not to twist sts on needles, pm for beg of rnd.

**Rnd 1** \* K1 tbl, p1; rep from \* around.

Rep last rnd 7 times more.

Change to larger needles.

Work rnds 1–8 of basketweave pat twice, then work rnds 1–4 once more.

### Shape top

**Rnd 1** P3, p2tog, \*[k1 tbl, p1] 3 times, p2, p2tog; rep from \* to last 5 sts, [k1 tbl, p1] 2 times, k1 tbl—54 sts.

**Rnd 2** P4, \*[k1 tbl, p1] 3 times, p3; rep from \* to last 5 sts, [k1 tbl, p1] 2 times, k1 tbl.

**Rnd 3** P2, p2tog, \*[k1 tbl, p1] 3 times, p1, p2tog; rep from \* to last 5 sts, [k1 tbl, p1] 2 times, k1 tbl—48 sts.

**Rnd 4** P3, \*[k1 tbl, p1] 3 times, p2; rep from \* to last 5 sts, [k1 tbl, p1] 2 times, k1 tbl.

**Rnd 5** \* K1 tbl, p1, k1 tbl, p3, p2tog; rep from \* around—42 sts.

**Rnd 6** \* K1 tbl, p1, k1 tbl, p4; rep from \* around.

**Rnd 7** \* K1 tbl, p1, k1 tbl, p2, p2tog; rep from \* around—36 sts.

**Rnd 8** \* K1 tbl, p1, k1 tbl, p3; rep from \* around.

**Rnd 9** \* P1, p2tog, k1 tbl, p1, k1 tbl; rep from \* around—30 sts.

**Rnd 10** \* P2, k1 tbl, p1, k1 tbl; rep from \* around.

**Rnd 11** \* P2tog, k1 tbl, p1, k1 tbl; rep from \* around—24 sts.

**Rnd 12** \* P1, k1 tbl; rep from \* around.

**Rnd 13** K1 tbl, [k2tog tbl] 11 times, k1 tbl—13 sts.

**Rnd 14** – K1, [k2tog] 6 times—7 sts.

Cut yarn, draw through rem sts, pull tog tightly and secure end. ■

## 13 Trapper Hat



Sized for Adult and shown on page 41.

●●●○ INTERMEDIATE

## Finished Measurements

- Head circumference approx 22"/56cm
- Length approx 8"/20.5cm (without earflap)

## Materials

- 2 balls of Noro/KFI *Silk Garden* in #364 (A)
- 2 balls of Noro/KFI *Silk Garden Solo* in #13 (B)
- One pair size 7 (4.5mm) needles, OR SIZE TO OBTAIN GAUGE
- Two size 7 (4.5mm) double-pointed needle (dpn) for I-cord
- Cable needle (cn)

## Gauge

18 sts and 24 rows = 4"/10cm over St st using size 7 (4.5mm) needles.

TAKE TIME TO CHECK GAUGE.

## Stitch Glossary

**Make Bobble (MB)** (K1, yo, k1) in st, turn work. P3, turn work. K3, turn work. P3, turn work. Sl 1, k2tog, pssos.

**5-St RPC** Sl 2 sts to cn, hold to back, k3, p2 from cn.

**5-St LPC** Sl 3 sts to cn, hold to front, p2, k3 from cn.

6-St LC Sl 3 sts to cn, hold to front, k3, k3 from cn.  
 6-St RPC Sl 3 sts to cn, hold to back, k3, p3 from cn.  
 6-St LPC Sl 3 sts to cn, hold to front, p3, k3 from cn.

## Seed Stitch

(over an even number of sts)

Row 1 \*K1, p1; rep from\* to end.

Row 2 \*P1, k1; rep from\* to end.

Rep rows 1 and 2 for seed st.

## Left Side

Beg with earflap and B, cast on 16 sts.

Note: Flap can be worked from earflap chart or written instructions.

Row 1 Knit.

Row 2 Purl.

Row 3 Cast on 3 sts, k2, p6, 6-st LC, p5.

Row 4 Cast on 3 sts, p2, k6, p6, k6, p2.

Row 5 [Kfb] twice, p4 5-st RPC, 5-st LPC, p4, [kfb] twice—26 sts.

Row 6 P2, k6, p3, k4, p3, k6, p2.

Row 7 K2, p4, 5-st RPC, p4, 5-st LPC, p4, k2.

Row 8 P2, k4, p3, k8, p3, p4, p2.

Row 9 K2, p2, 5-st RPC, p8, 5-st LPC, p2, k2.

Row 10 P2, k2, p3, k5, kfb, k6, p3, k2, p2—27 sts.

Row 11 K2, p2, k3, p6, MB, p6, k3, p2, k2.

Row 12 P2, k2, p3, k5, k2tog, k6, p3, k2, p2—26 sts.

Row 13 K2, p2, 5-st LPC, p8, 5-st RPC, p2, k2.

Row 14 and all rem WS rows K the knit sts and p the purl sts.

Row 15 K2, p4, 5-st LPC, p4, 5-st RPC, p4, k2.

Row 17 K2, p6, 5-st LPC, 5-st RPC, p6, k2.

Row 19 K2, p2, MB, p5, 6-st LC, p5, MB, p2, k2.

Row 21 K2, p6, 5-st RPC, 5-st LPC, p6, k2.

Rows 23–34 Rep rows 7–18.

Row 35 Rep row 19, omitting bobbles.

Row 36 K the knit sts and p the purl sts.

Cut yarn and change to A and work in seed st over

all sts as foll:

Row 1 (RS) Work 4 sts, k2tog, work 3 sts, k2tog, work 4 sts, k2tog, work 3 sts, k2tog, work 4 sts—22 sts.

Row 2 Cast on 3 sts, work to end—25 sts.

Row 3 Work to last 2 sts, [kfb] twice—27 sts.

Row 4 Work even in seed st.

Row 5 [Kfb] twice, work to end—29 sts.

Row 6 Cast on 3 sts, work to end—32 sts.

Row 7 Work to last 2 sts, [kfb] twice—34 sts.

Row 8 Work even in seed st.

Row 9 [Kfb] twice, work to last 2 sts, [kfb] twice—38 sts.

Rows 10 and 11 Work even in seed st.

Rows 12 and 13 [Kfb] twice, work to end—42 sts.

Row 14 Work even in seed st.

Row 15 [K2tog] twice, work to end—40 sts.

Row 16 Bind off 3 sts, work to end—37 sts.

Row 17 [K2tog] twice, work to last 4 sts, [k2tog] twice—33 sts.

Row 18 Work even in seed st.

Row 19 Work to last 4 sts, [k2tog] twice—31 sts.

Row 20 Work even in seed st.

Rows 21 and 22 Bind off 3 sts, work to end—25 sts.

Rows 23 and 24 Work even in seed st.

Row 25 [K2tog] twice, work to last 4 sts, [k2tog] twice—21 sts.

Row 26 Work to last 2 sts, k2tog—20 sts.

Rows 27 and 28 Work to last 4 sts, [k2tog] twice—16 sts.

Rows 29–31 [K2tog] twice, work to end—10 sts.

Row 32 Work even in seed st.

Bind off.

## Right Side

Beg with earflap and B, cast on 16 sts. Work rows 1–36 as for left side.

Cut yarn and change to A and work in seed st over all sts as foll:

Row 1 Cast on 3 sts, work 4 sts, k2tog, work 3 sts, k2tog, work 4 sts, k2tog, work 3 sts, k2tog, work 4 sts—25 sts.

Row 2 Work even in seed st.

Row 3 [Kfb] twice, work to end—27 sts.

Row 4 Work even in seed st.

Row 5 Cast on 3 sts, work to last 4 sts, [kfb] twice—32 sts.

Row 6 Work even in seed st.

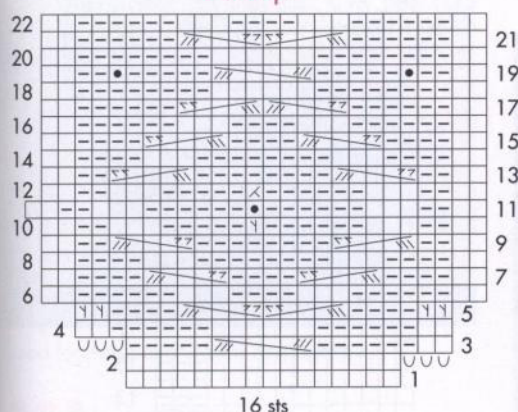
Row 7 [Kfb] twice, work to end—34 sts.

Row 8 Work even in seed st.

Row 9 [Kfb] twice, work to last 2 sts, [kfb] twice—38 sts.

Rows 10 and 11 Work even in seed st.

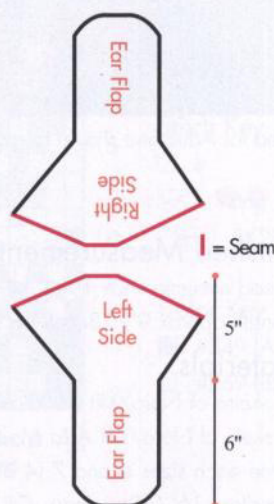
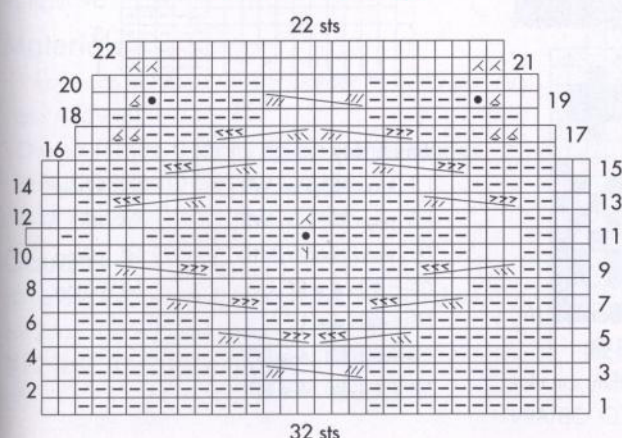
## Earflap



## Stitch Key

k on RS, p on WS	cast on 1 st
p on RS, k on WS	bind off 1 st
make bobble (MB)	kfb
5-st RPC	k2tog
5-st LPC	p2tog on RS
6-st LC	
6-st RPC	
6-st LPC	

## Center Front Flap



**Rows 12 and 13** Work to last 2 sts, [kfb] twice—42 sts.  
**Row 14** Work even in seed st.  
**Row 15** Work to last 4 sts, [k2tog] twice—40 sts.  
**Row 16** [K2tog] 3 times, work to end—37 sts.  
**Row 17** [K2tog] twice, work to last 4 sts, [k2tog] twice—33 sts.  
**Row 18** Work even in seed st.  
**Row 19** [K2tog] twice, work to end—31 sts.  
**Rows 20 and 21** Bind off 3 sts, work to end—25 sts.  
**Rows 22–24** Work even in seed st.  
**Row 25** [K2tog] twice, work to last 4 sts, [k2tog] twice—21 sts.  
**Row 26** K2tog, work to end—20 sts.  
**Rows 27 and 28** [K2tog] twice, work to end—16 sts.  
**Rows 29–31** Work to last 4 sts, [k2tog] twice—10 sts.  
**Row 32** Work even in seed st. Bind off.

## Center Panel

With A, cast on 11 sts. Beg with a p (WS) row, work in St st for 23 rows. Cont in St st as foll:  
**Next row (RS)** Kfb, work to last st, kfb—13 sts.  
 Work even for 47 rows.  
**Next row** K2tog, work to last 2 sts, k2tog.  
 Work even for 24 rows. Bind off.

## Pre Finishing

Block pieces lightly. Sew sides of center panel along top edges of left and right side pieces (red line on schematic).

## Center Front Flap

With WS facing and B, beg approx 1½"/4cm from right earflap and end approx 1½"/4cm from the left earflap, pick up and k 32 sts along front of hat.

**Note:** Center front flap can be worked from center front flap chart or written instructions.

**Row 1 (RS)** K2, p11, k6, p11, k2.  
**Row 2 and all WS rows, except rows 10 and 12** K the knit sts and p the purl sts. 2, k11, p6, k11, p2.  
**Row 3** K2, p11, 6-st LC, p11, k2.  
**Row 5** K2, p8, 6-st RPC, 6-st LPC, p8, k2.  
**Row 7** K2, p5, 6-st RPC, p6, 6-st LPC, p5, k2.  
**Row 9** K2, p2, 6-st RPC, p12, 6-st LPC, p3, k2.  
**Row 10 (WS)** P2, k2, p3, k8, M1, k9, p3, k2, p2.  
**Row 11** K2, p2, k3, p9, MB, p9, k3, p2, k2.  
**Row 12 (WS)** P2, k2, p3, k8, k2tog, k9, p3, k2, p2.  
**Row 13** K2, p2, 6-st LPC, p12, 6-st RPC, p2, k2.  
**Row 15** K2, p5, 6-st LPC, p6, 6-st RPC, p5, k2.  
**Row 17** K2, [p2tog] twice, p4, 6-st LPC, 6-st RPC, p4, [p2tog] twice, k2—28 sts.  
**Row 19** K2, p2tog, MB, p6, 6-st LC, p6, MB, p2tog, k2—26 sts.

**Row 21** [K2tog] twice, knit to last 4 sts, [k2tog] twice—22 sts.

**Row 22** Purl.

Bind off, leaving a long tail, cut yarn. Use tail to sew the top of the flap to the hat.

## Back band

With RS facing and A, pick up and k 30 sts along the back of the hat between the ear flaps. Work in k2, p2 rib for 6 rows. Bind off. Sew sides of the band to the ear flap next to it.

## Finishing

At the center cast-on edge of each ear flap, with RS facing, dpn and A, pick up and k 4 sts. Work I-cord as foll: \*Knit one row. Without turning work, slide the sts back to the opposite end of needle to work next row from RS. Pull yarn tightly from the end of the row. Rep from \* until cord measures 7½"/19cm. Bind off.

With A, make two 2½"/6.5cm pompoms and sew to ends of I-cord. ■

## 14 Cabled Cap



Sized for Adult and shown on page 42.

● ● ● ○ INTERMEDIATE

## Finished Measurements

- Head circumference 19½"/49.5cm
- Length approx 9"/23cm (with brim folded up)

## Materials

- 2 skeins of Noro/KFI Silk Garden Solo in #1 (A)
- 1 skein of Noro/KFI A La Mode in #8 (B)
- One each sizes 6 and 7 (4 and 4.5mm) circular needles, 16"/40cm long, OR SIZE TO OBTAIN GAUGE

- One set (5) size 7 (4.5mm) double-pointed needles (dpn)
- Cable needle (cn)

## Gauge

21 sts and 24 rows = 4"/10cm over chart pat using larger needles.

TAKE TIME TO CHECK GAUGE.

## Stitch Glossary

**Make Bobble (MB)** (K1, yo, k1) in st, turn work. P3, turn work. K3, turn work. P3, turn work. Sl 1, k2tog, pssso—Bobble complete.

**4-St RC** Sl 2 sts to cn, hold to back, k2, k2 from cn.

**4-St LC** Sl 2 sts to cn, hold to front, k2, k2 from cn.

**6-St RC** Sl 3 sts to cn, hold to back, k3, k3 from cn.

**6-St LC** Sl 3 sts to cn, hold to front, k3, k3 from cn.

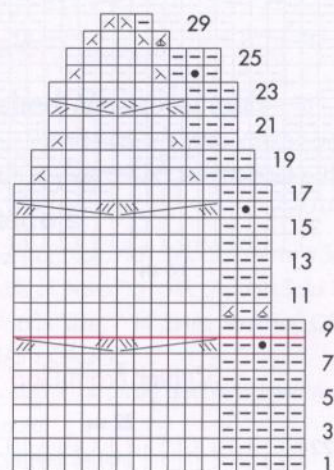
## Hat

With smaller circular needle and B, cast on 96 sts.

**Next 3 rds** \*K2, p2; rep from \* around.

Cut B, join A and cont in k2, p2 rib until piece measures 5"/12.5cm from beg, inc 6 sts evenly on last rnd—102 sts.

Change to larger circular needle.



17 sts

## Stitch Key

□ k on RS, p on WS	⊠ k2tog
□ p on RS, k on WS	⊠ ssk
■ make bobble (MB)	⊠ p2tog
⊠ 4-st RC	⊠ p3tog
⊠ 4-st LC	
⊠ 6-st RC	
⊠ 6-st LC	

## Beg chart pat

Rnd 1 Work 17-st rep of chart rnd 1 six times.

Cont in chart pat as established, rep rnds 1–8 a total of 4 times (32 rnds in chart pat).

## Shape top

**Note:** Change to dpn when sts no longer fit comfortably on circular needle.

Work rnds 9–29 of chart—18 sts rem.

Cut yarn and draw through rem sts, pull tog tightly and secure.

## Finishing

With B, make a 2"/5cm pompon and attach to top of hat. ■

## 15 Fair Isle Hat



Sized for Adult and shown on page 43.

●●●○ INTERMEDIATE

## Finished Measurements

- Head circumference 19½"/49.5cm
- Length 9"/23cm

## Materials

- 1 ball each of Noro/KFI Silk Garden in #349 (A) and #269 (B)
- One set (4) size 8 (5mm) double-pointed needles (dpn), OR SIZE TO OBTAIN GAUGE
- Stitch marker

## Gauge

20 sts and 24 rows = 4"/10cm over St st and chart pat using size 8 (5mm) needles.

TAKE TIME TO CHECK GAUGE.

## Hat

With A, cast on 92 sts. Divide sts onto 3 needles (30, 30, 32) sts. Join, taking care not to twist sts and place marker for beg of rnd.

Rnds 1–6 \*K2, p2; rep from \* around.

Rnd 7 Knit.

Rnd 8 Knit, inc 4 sts evenly around—96 sts.

## Beg chart pat

Rnd 1 Work 12-st rep of rnd 1 of chart 8 times.

Cont in chart pat as established through rnd 39—32 sts rem. Cut B.

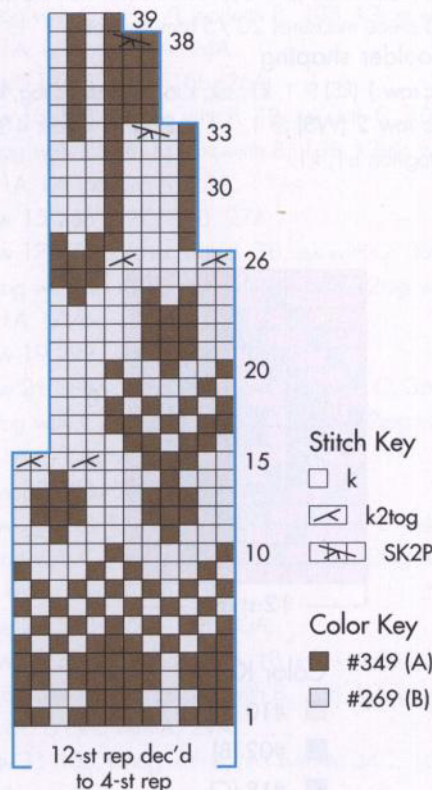
**Note:** If necessary, cut color A and rejoin to section of color change that will contrast more clearly with color B for chart clarity.

Next 2 rnds With A, [k2tog] around.

Cut yarn, leaving a long end. Draw end tightly through rem 8 sts and secure.

## Finishing

With B make a 2"/5cm pompon and attach to top of hat. ■



## 16 Striped shawl



Shown on pages 44 and 45.

●●○○ EASY

## Finished Measurements

Approx 22 x 80"/56 x 203cm

## Materials

- 2 hanks of Noro/KFI Silk Garden Solo each in #17 (A), #10 (B), #1 (C) and #2 (D)
- One pair size 7 (4.5mm) needles, OR SIZE TO OBTAIN GAUGE

## Gauge

20 sts and 24 rows = 4"/10cm over St st using size 7 (4.5mm) needles.

TAKE TIME TO CHECK GAUGE.

## Shawl

With A, cast on 1 st. (P1, k1) into st—2 sts.

Row 1 (K1, p1) in first st, p1—3 sts.

Row 2 (P1, k1) in first st, k2—4 sts.

Row 3 (K1, p1) in first st, p to end—1 st inc'd.

Row 4 (P1, k1) in first st, k to end—1 st inc'd.

Rep last 2 rows 25 times more—56 sts. Cut A and join B. With B, rep last 2 rows 26 times, then rep row 3 once more—109 sts. Cut B and join C.

Next row With C, (p1, k1) in first st, k to end—1 st inc'd.

Next row P2tog, p to end—1 st dec'd.

Rep last 2 rows 26 times more. Cut C and join D.

With D, rep last 2 rows 27 times. Cut D and join A.

With A, rep last 2 rows 27 times. Cut A and join B.

With B, rep last 2 rows 27 times. Cut B and join C.

Next row With C, SKP, k to end—1 st dec'd.

Next row P2tog, p to end—1 st dec'd.

Rep last 2 rows 26 times more—55 sts. Cut C and join D. With D, rep last 2 rows until 1 st rem. Fasten off last st. ■

## 17 Drapey Vest



Sized for Small, Medium, Large and shown in size Small on page 46.

●●●○ INTERMEDIATE

### Finished Measurements

- Bust (wrapped and closed) 36 (38½, 40½)"/91.5 (98, 103)cm
- Length 24 (24¼, 24¾)"/61 (61.5, 63)cm

### Materials

- 9 (10, 11) balls of Noro Silk Garden Solo in #10 (A)
- 1 ball each in #02 (B) and #18 (C)
- One pair size 7 (4.5mm) needles, OR SIZE TO OBTAIN GAUGE
- One size 7 (4.5mm) circular needle, 29"/74cm long
- One size D/3 (3.25mm) crochet hook
- Stitch markers

### Gauge

15 sts and 22 rows = 4"/10cm over St st using size 7 (4.5mm) needles.

TAKE TIME TO CHECK GAUGE.

### Note

One selvage st is worked at each seam edge and is not figured into the finished measurements. Make the fronts first to ensure the correct length of the back. The Fair Isle patterned front bands are designed so that the VWS of the Fair Isle pattern appears on the RS.

### Right Front

With straight needles and A, cast on 84 (88, 92) sts.

Row 1 (WS) Sl 1, p1, \*k2, p2; rep from \*, end k2.

Rows 2 and 3 Rep row 1.

Then, work the slant dec'ing as foll:

Row 1 (RS) Sl 1, k1, ssk, k to end.

Row 2 (WS) Sl 1, purl to the last st, k1.

Rep last 2 rows until 22 (24, 26) sts rem. Work 4 (2, 0) rows even. Bind off.

### Left Front

With straight needles and A, cast on 84 (88, 92) sts.

Row 1 (WS) Sl 1, p1, \*k2, p2; rep from \*, end k2.

Rows 2 and 3 Rep row 1.

Then, work the slant dec'ing as foll:

Row 1 (RS) K to the last 4 sts, k2tog, k2.

Row 2 (WS) Sl 1, purl to the last st, k1.

Rep last 2 rows until 22 (24, 26) sts rem. Work 4 (2, 0) rows even. Bind off.

### Back

With straight needles and A, cast on 70 (74, 78) sts.

Row 1 (WS) Sl 1, p1, \*k2, p2; rep from \* to end.

Row 2 (RS) Sl 1, k1, \*p2, k2; rep from \* to end.

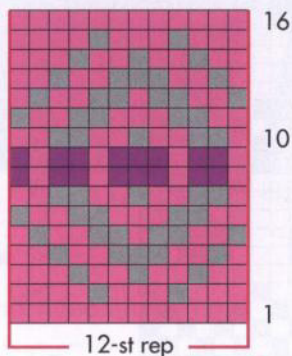
Row 3 Rep row 1.

Then, beg with a (RS) knit row, work even in St st until piece is 22 (24, 26) rows shorter than the front and piece measures 20"/51cm from beg.

### Shoulder shaping

Dec row 1 (RS) Sl 1, k1, ssk, k to last 4 sts, k2tog, k2.

Dec row 2 (WS) Sl 1, p1, p2tog, p to last 4 sts, p2tog tbl, p1, k1.



### Color Key

- #10 (A)
- #02 (B)
- #18 (C)

Rep last 2 rows 10 (11, 12) times more—26 sts. Bind off.

### Finishing

Block pieces to measurements.

Sew the straight front shoulders to the sloped back shoulders. Place markers at 8"/20.5cm from the lower edge on fronts and back at the armhole edge.

### Armhole trims

With RS facing, straight needles and A, pick up and k 72 sts evenly around armhole edge. Work in k1, p1 rib for 2"/5cm. Bind off in rib. Sew side and sleeve trim seams.

### Front border

From the RS, with circular needle and A, pick up and k 266 (266, 278) sts along the right front, back neck and left front edges. Knit 1 row, purl 1 row.

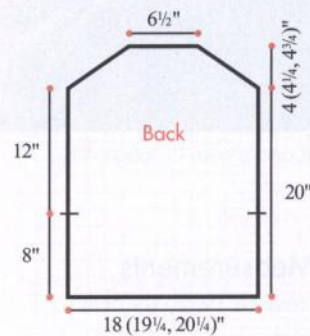
### Beg chart pat

Row 1 (RS of pat, WS of body) Sl 1, work 12-st rep 22 (22, 23) times, end k1.

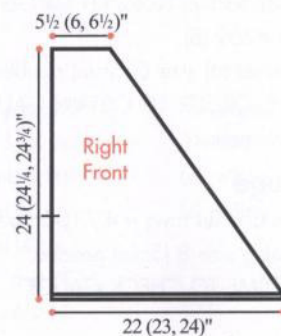
Rows 2–16 Work foll chart rows 2–16.

Knit 1 row with A. Bind off.

With crochet hook and A, from the RS, work an edge of sc evenly along the outer edge of border. Block the border to lie flat. ■



— = Marker



## 18 Intarsia Sweater



One size fits most and shown on page 47.

●●●● EXPERIENCED

### Finished Measurements

- Bust 54"/137cm
- Length 23"/58.5cm
- Upper arm 13"/33cm

### Materials

- 6 skeins of Noro/KFI Silk Garden Solo in #2 (A)
- 4 skeins of Noro/KFI Silk Garden Solo in #7 (B)
- 2 skeins of Noro/KFI Silk Garden Solo in #10 (C)
- One pair size 8 (5mm) needles, OR SIZE TO OBTAIN GAUGE
- One size 8 (5mm) circular needle, 16"/40cm long
- Locking stitch markers
- Tapestry needle

### Gauge

16 sts and 23 rows = 4"/10cm over St st using size 8 (5mm) needle.

TAKE TIME TO CHECK GAUGE.

### Stitches Used

**Right Lifted increase (R/L inc)** Lift the st below the first st on the left needle and knit

**Left Lifted increase (L/L inc)** Lift the 2nd st below the just worked st on right needle and knit

### Notes

1. Body of sweater is worked in St st (k on RS, p on WS). Knit the first and last st of every row for a selvage st. The selvage sts are not counted in the finished measurements.

2. When changing colors, twist yarns on WS to prevent holes in work. Use a separate ball of yarn for each block of color. Do not carry yarns across back of work.

### Notes on Shifting Colors

1. When moving yarn to the right on RS rows, work to 2 sts before color change, k2tog, with new color k1, L/L inc, work to end.
2. When moving yarn to the left on RS rows, work to 1 st before color change, R/L inc, k1, with new color ssk, work to end.

### Back

With A, cast on 113 sts. Work in garter st (k every row) for 6 rows. Cont in St st and garter st selvage in colors as foll:

**Row 1 (RS)** Knit across row as foll: 25B, 48C, 16B, 24A.

**Row 2 and all (WS) rows** Matching colors from row before, k1 (selvage st), p to last st, k1 (selvage st). Rep last 2 rows once more.

**Row 5** 24B, R/L inc with B, 1B, ssk with C, 44C, k2tog with C, 1B, L/L inc with B, 13B, k2tog with B, 1A, L/L inc with A, 23A.

**Row 7** 26B, 46C, 16B, 25A.

**Row 9** 25B, R/L inc with B, 1B, ssk with C, 42C, k2tog with C, 1B, L/L inc with B, 13B, k2tog with B, 1A, L/L inc with A, 24A.

**Row 11** 27B, 44C, 16B, 26A.

**Row 13** 26B, R/L inc with B, 1B, ssk with C, 40C, k2tog with C, 1B, L/L inc with B, 13B, k2tog with B, 1A, L/L inc with A, 25A.

**Row 15** 28B, 42C, 16B, 27A.

**Row 17** 27B, R/L inc with B, 1B, ssk with C, 38C, k2tog with C, 1B, L/L inc with B, 13B, k2tog with B, 1A, L/L inc with A, 26A.

**Row 19** 29B, 40C, 16B, 28A.

**Row 21** 28B, R/L inc with B, 1B, ssk with C, 36C, k2tog with C, 1B, L/L inc with B, 13B, k2tog with B, 1A, L/L inc with A, 27A.

**Row 23** 30B, 38C, 16B, 29A.

**Row 25** 29B, R/L inc with B, 1B, ssk with C, 34C, k2tog with C, 1B, L/L inc with B, 13B, k2tog with B, 1A, L/L inc with A, 28A.

**Row 27** 31B, 36C, 16B, 30A.

**Row 29** 30B, R/L inc with B, 1B, ssk with C, 32C, k2tog with C, 1B, L/L inc with B, 13B, k2tog with B, 1A, L/L inc with A, 29A.

**Row 31** 30B, k2tog with B, M1 with A, 34C, 16B, 31A.

**Row 33** 29B, k2tog with B, R/L inc with A, 1A, L/L

inc with A, ssk with C, 30C, k2tog with C, 1B, L/L inc with B, 13B, k2tog with B, 1A, L/L inc with A, 30A.

**Row 35** 30B, 3A, 32C, 16B, 32A.

**Row 37** 28B, k2tog with B, 1A, L/L inc with A, 1A, R/L inc with A, 1A, ssk with C, 28C, k2tog with C, 1B, L/L inc with B, 13B, k2tog with B, 1A, L/L inc with A, 31A.

**Row 39** 29B, 5A, 30C, 16B, 33A.

**Row 41** 27B, k2tog with B, 1A, L/L inc with A, 3A, R/L inc with A, 1A, ssk with C, 26C, k2tog with C, 1B, L/L inc with B, 13B, k2tog with B, 1A, L/L inc with A, 32A.

**Row 43** 28B, 7A, 28C, 16B, 34A.

**Row 45** 26B, k2tog with B, 1A, L/L inc with A, 5A, R/L inc with A, 1A, ssk with C, 24C, k2tog with C, 1B, L/L inc with B, 13B, k2tog with B, 1A, L/L inc with A, 33A.

**Row 47** 27B, 9A, 26C, 16B, 35A.

**Row 49** 25B, k2tog with B, 1A, L/L inc with A, 7A, R/L inc with A, 1A, ssk with C, 22C, k2tog with C, 1B, L/L inc with B, 13B, k2tog with B, 1A, L/L inc with A, 34A.

**Row 51** 26B, 11A, 24C, 16B, 36A.

**Row 53** 24B, k2tog with B, 1A, L/L inc with A, 9A, R/L inc with A, 1A, ssk with C, 20C, k2tog with C, 1B, L/L inc with B, 13B, k2tog with B, 1A, L/L inc with A, 35A.

**Row 55** 25B, 13A, 22C, 16B, 37A.

**Row 57** 23B, k2tog with B, 1A, L/L inc with A, 11A, R/L inc with A, 1A, ssk with C, 18C, k2tog with C, 1B, L/L inc with B, 15B, 37A.

**Row 61** 22B, k2tog with B, 1A, L/L inc with A, 13A, R/L inc with A, 1A, ssk with C, 16C, k2tog with C, 1B, L/L inc with B, 16B, 37A.

**Row 63** 23B, 17A, 18C, 18B, 37A.

**Row 65** 21B, k2tog with B, 1A, L/L inc with A, 15A, R/L inc with A, 1A, ssk with C, 14C, k2tog with C, 1B, L/L inc with B, 17B, 37A.

**Row 67** 22B, 19A, 16C, 19B, 37A.

**Row 69** 20B, k2tog with B, 1A, L/L inc with A, 17A, R/L inc with A, 1A, ssk with C, 12C, k2tog with C, 1B, L/L inc with B, 18B, 37A.

**Row 71** 21B, 21A, 14C, 19B, R/L inc with B, 1B, ssk with A, 35A.

**Row 73** 19B, k2tog with B, 1A, L/L inc with A, 19A, R/L inc with A, 1A, ssk with C, 10C, k2tog with C, 1B, L/L inc with B, 19B, R/L inc with B, 1B, ssk with A, 34A.

**Row 75** 20B, 23A, 12C, 22B, R/L inc with B, 1B, ssk with A, 33A.

**Row 77** 18B, k2tog with B, 1A, L/L inc with A, 21A, R/L inc with A, 1A, ssk with C, 8C, k2tog with C, 1B, L/L inc with B, 22B, R/L inc with B, 1B, ssk with A, 32A.

**Row 79** 18B, R/L inc with B, 1B, ssk with A, 21A, k2tog with A, 1C, L/L inc with C, 9C, 25B, R/L inc with B, 1B, ssk with A, 31A.

**Row 81** 20B, 23A, 9C, k2tog with C, 1B, L/L inc with B, 25B, R/L inc with B, 1B, ssk with A, 30A.

**Row 83** 19B, R/L inc with B, 1B, ssk with A, 19A, k2tog with A, 1C, L/L inc with C, 9C, 28B, R/L inc with B, 1B, ssk with A, 29A.

**Row 85** 21B, 21A, 9C, k2tog with C, 1B, L/L inc with B, 28B, R/L inc with B, 1B, ssk with A, 28A.

**Row 87** 20B, R/L inc with B, 1B, ssk with A, 17A, k2tog with A, 1C, L/L inc with C, 9C, 31B, R/L inc with B, 1B, ssk with A, 27A.

Place locking stitch marker at the end of each side of row 87 to mark beg of armholes.

**Row 89** 22B, 19A, 9C, k2tog with C, 1B, L/L inc with B, 31B, R/L inc with B, 1B, ssk with A, 26A.

**Row 91** 21B, R/L inc with B, 1B, ssk with A, 15A, k2tog with A, 1C, L/L inc with C, 9C, 34B, R/L inc with B, 1B, ssk with A, 25A.

**Row 93** 23B, 17A, 9C, k2tog with C, 1B, L/L inc with B, 34B, R/L inc with B, 1B, ssk with A, 24A.

**Row 95** 22B, R/L inc with B, 1B, ssk with A, 13A, k2tog with A, 1C, L/L inc with C, 9C, 37B, R/L inc with B, 1B, ssk with A, 23A.

**Row 97** 24B, 15A, 9C, k2tog with C, 1B, L/L inc with B, 37B, R/L inc with B, 1B, ssk with A, 22A.

**Row 99** 23B, R/L inc with B, 1B, ssk with A, 11A, k2tog with A, 1C, L/L inc with C, 9C, 40B, R/L inc with B, 1B, ssk with A, 21A.

**Row 101** 25B, 13A, 9C, k2tog with C, 1B, L/L inc with B, 40B, R/L inc with B, 1B, ssk with A, 20A.

**Row 103** 24B, R/L inc with B, 1B, ssk with A, 9A, k2tog with A, 1C, L/L inc with C, 9C, 43B, R/L inc with B, 1B, ssk with A, 19A.

**Row 105** 26B, 11A, 9C, k2tog with C, 1B, L/L inc with B, 43B, R/L inc with B, 1B, ssk with A, 18A.

**Row 107** 25B, R/L inc with B, 1B, ssk with A, 7A, k2tog with A, 1C, L/L inc with C, 9C, 46B, R/L inc with B, 1B, ssk with A, 17A.

**Row 109** 27B, 9A, 9C, k2tog with C, 1B, L/L inc with B, 46B, R/L inc with B, 1B, ssk with A, 16A.

**Row 111** 26B, R/L inc with B, 1B, ssk with A, 5A, k2tog with A, 1C, L/L inc with C, 9C, 49B, R/L inc with B, 1B, ssk with A, 15A.

**Row 113** 28B, 7A, 9C, k2tog with C, 1B, L/L inc with B, 49B, R/L inc with B, 1B, ssk with A, 14A.

**Row 115** 27B, R/L inc with B, 1B, ssk with A, 3A, k2tog with A, 1C, L/L inc with C, 9C, 52B, R/L inc with B, 1B, ssk with A, 13A.

**Row 117** 29B, 5A, 9C, k2tog with C, 1B, L/L inc with B, 52B, R/L inc with B, 1B, ssk with A, 12A.

**Row 119** 28B, R/L inc with B, 1B, ssk with A, 1A, k2tog with A, 1C, L/L inc with C, 9C, 55B, R/L inc with B, 1B, ssk with A, 11A.

**Row 121** 30B, 3A, 9C, k2tog with C, 1B, L/L inc with B, 55B, R/L inc with B, 1B, ssk with A, 10A.

**Row 123** 29B, R/L inc with B, 1B, S2KP with A, 1C, L/L inc with C, 9C, 58B, R/L inc with B, 1B, ssk with A, 9A.

**Row 125** 30B, ssk with B, 1C, L/L inc with C, 8C, k2tog with C, 1B, L/L inc with B, 58B, R/L inc with B, 1B, ssk with A, 8A.

## Shoulder and neck shaping

**Row 127** Bind off 8 sts with B, 22B, 11C, 63B, R/L inc with B, 1B, ssk with A, 6A.

**Row 128 (WS)** Bind off 8 sts with A, purl to end matching colors—97 sts.

**Row 129** Bind off 8 sts with B, 12B, k2tog with B, 1C, L/L inc with C, 8C, k2tog with C, 1B, L/L inc with B, 1B, bind off 25 sts with B (for center back neck), 35B.

## Right shoulder and neck

Cont with B only on last 36 sts, shaping shoulder and neck as foll:

Bind off from shoulder edge (beg of VWS rows), 8 sts twice and 7 sts twice, AT THE SAME TIME, bind off from neck edge (beg of RS rows) 4 sts once and 2 sts once.

## Left shoulder

With WS facing, join new yarn at end of center neck bind-off and work rem 28 sts as foll:

**Row 130** Bind off 4 sts with B, 9C, 14B.

**Row 131** Bind off 8 sts with B, 5B, 10C.

**Row 132** Bind off 2 sts with C, 7C, 6B.

**Row 133** Bind off 7 sts with B, 6C.

**Row 134** 7B.

**Row 135** Bind off 7 sts with B.

## Front

Work same as Back through row 118.

## Neck and shoulder shaping

**Next row (RS)** **Row 119** 28B, R/L inc with B, ssk with A, 1A, k2tog with A, L/L inc with C, 10C, 3B, join bind off 19 sts with B, 33B, R/L inc with B, ssk with A, 11A.

## Right shoulder

**Row 120** 1A, p11A, p35B.

**Row 121** Bind off 4 sts with B, 30B, R/L inc with B, ssk with A, 10A.

**Row 122** 1A, p10A, p32B.

**Row 123** Bind off 2 sts with B, 29B, R/L inc with B, ssk with A, 9A.

**Row 124** 1A, p9A, p31B.

**Row 125** Bind off 1 st with B, 28B, R/L inc with B, ssk with A, 8A.

**Row 126** 1A, p8A, p31B.

**Row 127** Bind off 1 st with B, 27B, R/L inc with B, ssk with A, 7A.

**Row 128** Bind off 8 sts with A, p30B—31 sts.

Cont with B only, and cont to dec 1 st at neck edge (beg of RS row) every 4th row once more, and cont to bind off from shoulder edge (beg of VWS rows) 8 sts twice more and 7 sts twice.

## Left shoulder

With WS facing, join new yarn at end of center neck bind off.

**Row 120** Bind off 2 sts with B, bind off 2 sts with C, p9C, p3A, p30B.

**Row 121** 30B, 3A, 10C.

**Row 122** Bind off 2 sts with C, p7C, p3A, p30B.

**Row 123** 29B, R/L inc with B, 1B, S2KP with A, 1C, L/L inc with C, 7C.

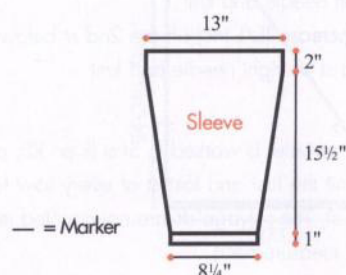
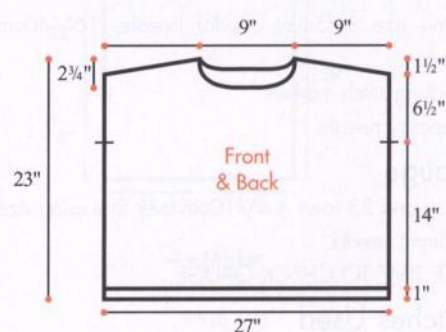
**Row 124** Bind off 1 st with C, 7C, 1A, 31B.

**Row 125** 30B, ssk with B, 1C, L/L inc with C, 7C.

**Row 126** Bind off 1 st with C, 7C, 31B.

**Row 127** Bind off 8 sts with B, 22B, 8C.

**Row 128** 8C, 23B.



Row 129 Bind off 8 sts with B, 12B, k2tog with B, 1C, L/L inc with C, 7C.

Row 130 Bind off 1 st with C, 7C, 14B.

Row 131 Bind off 8 sts with B, 5B, 8C.

Row 132 8C, 6B.

Row 133 Bind off 7 sts with B, 6C.

Row 134 7C.

Row 135 Bind off 7 sts with C.

## Sleeves

With A, cast on 35 sts. Work in garter st (k every row) for 6 rows.

## Sleeve shaping

Work in St st 10 rows.

Inc Row (RS) K2, L/L inc, k to last 2 sts, R/L inc, k2.

Rep inc row every 10th row 4 times, every 8th row 5 times. (55 sts)

Work even 11 rows.

Bind off rem 55 sts. Place Locking stitch marker at center top of each sleeve to match the shoulder seam.

## Finishing

Block pieces to finished measurements.

Sew shoulder seams.

## Neckband

With RS facing, using circular needle 16"/40cm long and A, pick up and k 35 sts along back neck edge, 45 sts along front neck edge. [Purl 1 rnd, knit 1 rnd] twice, purl 1 rnd. Bind off purlwise.

Sew sleeve to body, then sew side and sleeve seam.

Block gently on seams. ■

## 19 Textured Tee



Sized for Small, Medium/Large, X-Large and shown in size Medium on page 48.



## Finished Measurements

- Bust 39 (44, 49)"/99 (111.5, 124.5)cm
- Length 22 (23, 24)"/56 (58.5, 61)cm
- Upper arm 16 (18, 19¾)"/40.5 (45.5, 50)cm

## Materials

- 8 (9, 11) balls of Noro A La Mode in #16
- One size 7 (4.5mm) circular needle, 29"/74cm long OR SIZE TO OBTAIN GAUGE
- One spare size 6 (4mm) needle for binding off at the neck
- Contrast color waste yarn

## Gauge

17 sts and 26 rows = 4"/10cm over St st and ridge pat using size 7 (4.5mm) needle.

TAKE TIME TO CHECK GAUGE.

## Notes

1. The sweater is worked from sleeve cuff edge across to sleeve cuff edge in one piece with no shaping. Stitches that form the straight neck opening are knit using waste yarn. These same live sts (after removing the waste yarn) are slipped to a circular needle in the finishing and bound off forming the slit neck opening. Back and front are identical.
2. A circular needle is used to accommodate the large number of sts. Do not join.

## Body

Beg at sleeve cuff edge with circular needle, cast on 68 (76, 84) sts. Beg with a (RS) knit row, work in St st (k on RS, p on WS) for 5 rows.

Next row (WS) Knit.

Next 2 rows Knit.

\*Beg with a (RS) knit row, work in St st for 13 (15, 17) rows.

Next row (WS) Knit.

Next 2 rows Knit.\*

Rep between \*'s once more.

## Beg body

Next row (RS) Cast on 60 sts, k to end.

Next row (WS) Cast on 60 sts, p to end—188 (196, 204) sts.

Work in St st for 11 (13, 15) rows more.

\*\*Next row (WS) Knit.

Next 2 rows Knit.

Beg with a (RS) knit row, work in St st for 13 (15, 17) rows.\*\*

Rep between \*\*'s twice more.

Next row (WS) Knit.

## Body center

Note On the next RS row, sts for the neck (front and back) will be knit using the waste yarn. Then, piece will be completed with working yarn and with the ridge rows and side seam in reverse to the first side. The neck opening will not be worked until the finishing.

Next row (RS) K 62 (66, 70) and cut yarn; then using waste yarn, k the next 64 sts, rejoin the working yarn and k 62 (66, 70).

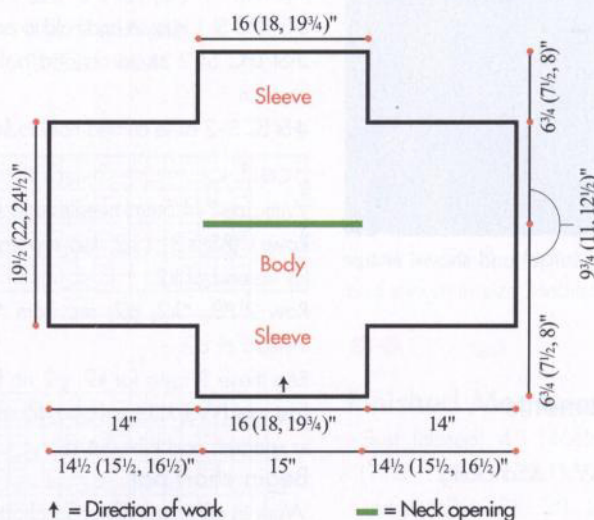
With working yarn, purl 2 rows.

\*\*\*Beg with a (WS) purl row, work in St st for 13 (15, 17) rows.

Next row (RS) Purl.

Next 2 rows Purl.\*\*\*

Rep between \*\*\*'s twice more.



Beg with a (VWS) purl row, work in St st for 11 (13, 15) rows.

**Next row (RS)** Bind off 60 sts, k to end.

**Next row (WS)** Bind off 60 sts, p to end—68 (76, 84) sts.

**Next row (RS)** Purl.

**Next 2 rows** Purl..

Then, rep between \*\*\*'s twice. Then, beg with a (VWS) purl row, work in St st for 5 rows. Bind off.

## Finishing

Carefully remove the waste yarn and transfer the 64 sts from the top set of free loops to one end of the circular needle and the 64 sts from the lower set of free loops to the other end of the circular needle. Rejoin yarn and pick up and k 2 sts from the center of the neckline, then using size 6 (4mm) needles, tightly bind off 1 st, then tightly bind off the next 64 sts, pick up and k2 sts in the center of the neckline, bind off these sts and bind off rem 64 sts. Finish the edge neatly at the center of the 2 neckline edges. Sew side and sleeve seams. Block lightly on the VWS to measurements. ■

## 20 Colorblock Aran Pullover and Scarf



Sized for Small (Medium, Large) and shown in size Small on page 49.

● ● ● ● EXPERIENCED

## Finished Measurements

### Scarf

• 9½"/24cm wide by 65"/165cm long

### Pullover

• Bust 39 (42, 46)"/99 (106.5, 117)cm

- Length 24¾ (26, 27¼)"/63 (66, 69)cm
- Upper arm 14 (15¾, 17½)"/35.5 (40, 44.5)cm

## Materials

### For Scarf

- 5 skeins of Noro/KFI Silk Garden Solo in #17
- One pair size 7 (4.5mm) needles OR SIZE TO OBTAIN GAUGE
- Cable needle (cn)

### For Pullover

- 5 (6, 7) skeins of Noro/KFI Silk Garden Solo in #18 (A)
- 6 (7, 8) skeins in #8 (B)
- One pair each sizes 6 and 8 (4 and 5mm) needles, OR SIZE TO OBTAIN GAUGE
- Cable needle (cn)
- Stitch markers

## Gauges

### For Scarf

- 23 sts and 24 rows = 4"/10cm over chart pat using size 7 (4.5mm) needles.

### For Pullover

- 22 sts and 26 rows = 4"/10cm over chart B or C pat using size 8 (5mm) needles.
- 18 sts and 26 rows = 4"/10cm over chart A pat using size 8 (5mm) needles.

TAKE TIME TO CHECK GAUGES.

## Stitches Used

**2-St RT K2tog** leaving sts on LH needle; then insert RH needle between the 2 sts just k2tog and k the first st again; then sl st both sts for needle tog.

**2-St RPT (tbl)** Sl 1 st to cn and hold to back, k1tbl, p1 from cn.

**2-St LPT (tbl)** Sl 1 st to cn and hold to front, p1, k1tbl from cn.

**3-St RPC** Sl 1 st to cn and hold to back, k2, p1 from cn.

**3-St LPC** Sl 2 sts to cn and hold to front, p1, k2 from cn.

**4-St LC** Sl 2 sts to cn and hold to front, k2, k2 from cn.

## Scarf

With size 7 (4.5mm) needles and #17, cast on 52 sts.

**Row 1 (RS)** K3, \*p2, k2; rep from \*, end last rep, k3 instead of k2.

**Row 2** P3, \*k2, p2; rep from \*, end last rep p3 instead of p2.

Rep these 2 rows for k2, p2 rib for 5 rows more.

**Last row (WS)** K3, purl next 46 sts inc'ing 2 sts evenly spaced, end k3—54 sts.

### Begin chart pat

Work in chart pat foll scarf chart for 42 reps of the 8-row rep.

**Next row (RS)** K3, [k22, k2tog] twice, k3—52 sts. Then work in k2, p2 rib as for beg edge for 7 rows. Bind off in rib.

## Pullover

### Back

With smaller needles and A, cast on 90 (98, 106) sts.

**Row 1 (RS)** K2, \*p2, k2; rep from \* to end.

**Row 2 (WS)** P2, \*k2, p2 rep from \* to end.

Rep these 2 rows for k2, p2 rib for 17 rows more.

**Inc row (WS)** Purl, inc'ing 12 sts evenly spaced across—102 (110, 118) sts.

Change to larger needles.

### Begin chart pat

**Row 1 (RS)** Work 10 (14, 18) sts foll chart A, place marker (pm), work 32 sts foll chart B, work 18 sts foll chart C, then work sts 2–32 of chart B, p1 (st 33 of chart C), pm, work 10 (14, 18) sts foll chart A.

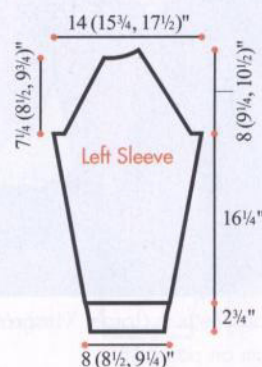
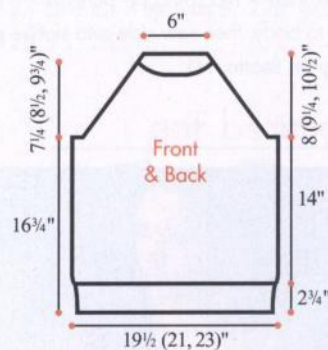
There are 82 sts between the 2 markers foll charts B and C as established with the 10 (14, 18) sts on each outside edge foll chart A.

Work even until piece measures 13½"/34cm from beg, ending with row 16 of the 3rd chart C rep.

Change to B and cont until piece measures 16¾"/42.5cm from beg.

### Raglan armhole shaping

Bind off 4 sts at beg of next 2 rows, 3 sts at beg of



next 2 rows, 2 sts at beg of next 2 rows.

[Dec 1 st each side of next RS row. Work 1 row even] 1 (5, 9) times—82 sts.

Dec 1 st each side of the next 2 rows.

Work 1 row even.

Dec 1 st each side of next row—76 sts.

**\*\*Interior dec row 1 (RS)** Work first 8 sts, p2tog, work to last 10 sts, p2tog tbl, work last 8 sts.

**Interior dec row 2 (WS)** With first 8 sts, SKP, work to last 10 sts, k2tog, work last 8 sts.

Row 3 Work even.

Row 4 Rep interior dec row 2.

Row 5 Work even.

Row 6 Work even.

Rows 7 and 8 Rep interior dec rows 1 and 2.

Rows 9 and 10 Work even\*\*.

Rep between \*\*'s 3 times more, only on the last rep, dec 1 st each side of the last WS row—34 sts.

Bind off.

## Front

Work same as back, including armhole shaping, until there are 50 sts. Mark center 16 sts on the last WS row.

## Neck shaping

At this point, the interior armhole dec's will cont to take place on RS rows only and on the next 5 RS

rows and AT SAME TIME, on the next RS row, bind off center 16 sts between markers and cont to shape neck working both sides at once and binding off 3 sts from each neck edge once and 2 sts once. Bind off rem 2 sts each side.

## Left Sleeve

With smaller needles and A, cast on 38 (42, 46) sts. Work in k2, p2 rib for 2¾"/7cm, end with a RS row.

**Next row (WS)** Purl, inc'ing 7 sts evenly spaced across—45 (49, 53) sts.

Change to larger needles.

## Begin chart pat

**Row 1 (RS)** Work 6 (8, 10) sts foll chart A, pm, work sts 1–33 foll chart B, pm, work 6 (8, 10) sts foll chart A.

Cont to work in this way foll charts for 5 rows more.

**Note** Read before cont to knit.

Inc 1 st each side of next row (in chart A pat) and rep this inc every 8th row 11 (2, 0) times more then every 6th row 0 (11, 15) times—69 (77, 85) sts, AT SAME TIME, when piece measures 10½"/26.5cm from beg, change to B and work until piece measures 19"/48cm from beg.

## Raglan cap shaping

Bind off 4 sts at beg of next 2 rows.

Dec 1 st each side of next row then every other row

22 (26, 30) times more—15 sts.

## Top of cap shaping

**Next row (WS)** Bind off 8 sts, work to end.

Cont to shape top binding off 3 sts from beg of next WS row and 2 sts at beg of last WS row AT SAME TIME, work beg of row dec's twice more.

## Right Sleeve

Work same as for left sleeve to the top of cap shaping, ending with a WS row.

## Top of cap shaping

**Next row (RS)** Bind off 8 sts, work to end.

Cont to shape top binding off 3 sts from beg of next RS row and 2 sts at beg of last RS row, AT SAME TIME, work end of row dec's twice more.

## Finishing

Block pieces to measurements.

Sew raglan sleeves into raglan armholes. Sew side and sleeve seams.

## Neckband

With RS facing, circular needle and B, pick up and k 80 sts evenly around neck edge. Join to work in rnds and pm to mark beg of rnd. Work in rnds of k2, p2 rib for 8 rnds. Bind off in rib. ■

# 21 Oversized Cardigan

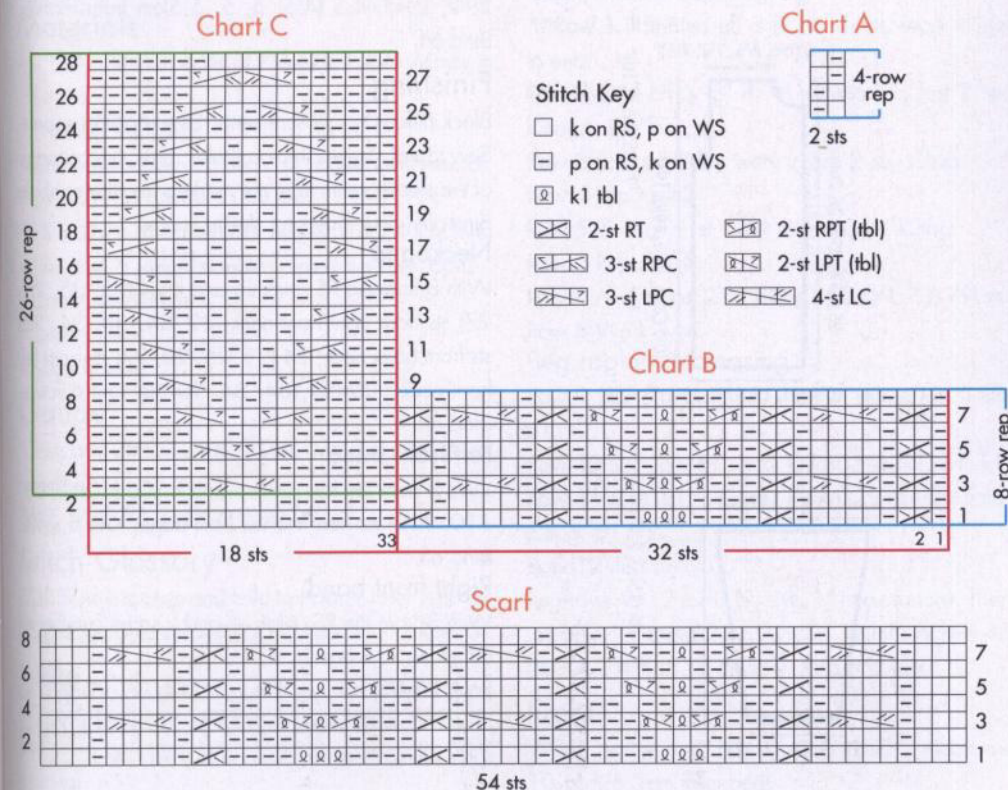


Sized for Small, Medium, Large, X-large, XX-large and shown in size Medium on page 50.

●●○○ EASY

## Finished Measurements

- Bust (closed) 45 (46½, 49½, 52, 55)"/114 (118, 125.5, 132, 139.5)cm
- Length 27½ (28, 28½, 29)"/70 (71, 71, 72.5, 73.5)cm



- Upper arm 14 (15, 17, 18, 20)"/36 (38, 43, 46, 51)cm

## Materials

- 12 (12, 14, 15, 16) balls of Noro *Silk Garden Solo* in #17 (A)
- 1 (1, 2, 2, 2) balls in #8 (B)
- One pair size 7 (4.5mm) needles, OR SIZE TO OBTAIN GAUGE
- Stitch markers
- Seven 7/8-inch (22mm) buttons

## Gauge

17 sts and 27 rows = 4"/10cm over eyelet ridges pat after blocking, using size 7 (4.5mm) needles. TAKE TIME TO CHECK GAUGE.

## Garter Stitch

Knit every row.

## Eyelet Ridges Pattern

(over an odd number of sts)

Row 1 (RS) Knit.

Row 2 P1, k to last st, p1.

Row 3 K1, \*k2tog, yo; rep from \* to last 2 sts, k2.

Row 4 P1, k to last st, p1.

Row 5 Knit.

Row 6 Purl.

Rows 7–14 Rep rows 5 and 6 four times.

Rep rows 1–14 for eyelet ridges pat.

## Note

The k1 selvage sts worked at each end of row are not figured into the finished measurements.

## Back

With B, cast on 97 (101, 107, 113, 119) sts.

Knit 6 rows.

Change to A and work in eyelet ridges pat until piece measures 20½ (20½, 19½, 19½, 19)"/52 (52, 49.5, 49.5, 48)cm from beg.

## Armhole shaping

Bind off 7 (7, 8, 9, 10) sts at beg of next 2 rows—83 (87, 91, 95, 99) sts.

Work even until armhole measures 7 (7½, 8½, 9, 10)"/18 (19, 21.5, 23, 25.5)cm.

Bind off all sts.

## Left Front

With B, cast on 47 (49, 53, 55, 59) sts.

Knit 6 rows.

Change to A and work in eyelet ridges pat until piece measures 20½ (20½, 19½, 19½, 19)"/52 (52, 49.5, 49.5, 48)cm from beg.

## Armhole shaping

Next row (RS) Bind off 7 (7, 8, 9, 10) sts, work to end of row—40 (42, 45, 46, 49) sts.

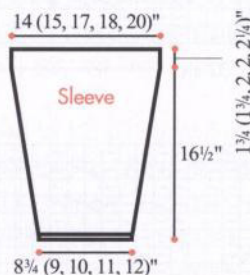
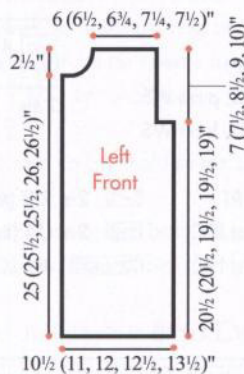
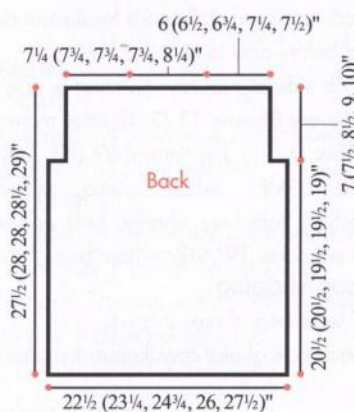
Work even until armhole measures 4½ (5, 6, 6½, 7½)"/11.5 (12.5, 15, 16.5, 19)cm, end with a RS row.

## Neck shaping

Next row (WS) Bind off 4 (5, 6, 5, 6) sts, work to end.

Cont to shape neck binding off 4 sts from neck edge once, 3 sts once, 2 sts once then 1 st 1 (1, 1, 1, 2) times—26 (27, 29, 31, 32) sts.

Work even until armhole measures same as back. Bind off.



## Right Front

Work same as left front until piece measures 20½ (20½, 19½, 19½, 19)"/52 (52, 49.5, 49.5, 48)cm from beg, end with a RS row.

## Armhole shaping

Next row (WS) Bind off 7 (7, 8, 9, 10) sts, work to end of row—40 (42, 45, 46, 49) sts.

Work even until armhole measures 4½ (5, 6, 6½, 7½)"/11.5 (12.5, 15, 16.5, 19)cm, end with a WS row.

## Neck shaping

Next row (RS) Bind off 4 (5, 6, 5, 6) sts, work to end. Cont to shape neck binding off 4 sts from neck edge once, 3 sts once, 2 sts once then 1 st 1 (1, 1, 1, 2) times—26 (27, 29, 31, 32) sts. Work even until armhole measures same as back. Bind off.

## Sleeves

With B, cast on 39 (41, 45, 49, 53) sts. Knit 4 rows. Change to A and work in eyelet ridges pat for 6 rows. Cont in eyelet ridges pat (working inc sts into pat) as foll:

Inc row (RS) K1, M1, work to last st, M1, k1.

Rep inc row every 10th (0, 6th, 6th, 6th) row 5 (0, 7, 7, 16) times more then every 8th row 5 (12, 7, 7, 0) times more—61 (67, 75, 79, 87) sts. Work even until piece measures 16½"/42cm from beg. Pm each side of last row. Work even for 1¾ (1¾, 2, 2, 2¼)"/4.5 (4.5, 5, 5, 5.5)cm from marker. Bind off.

## Finishing

Block pieces to measurements. Sew shoulder seams. Sew top of sleeves into armholes. Sew the top edge of the sleeve seam from the markers into the armhole bind-offs. Sew side and sleeve seams.

## Neckband

With B from the RS, pick up and k 24 (25, 25, 27) sts from right front neck, 32 (34, 34, 36) sts from back neck, 24 (25, 25, 27) sts from left front neck—80 (84, 84, 90) sts. Knit 4 rows. Bind off.

## Left front band

With B from the RS, pick up and k 106 (108, 108, 110, 112) sts from the left front edge. Knit 5 rows. Bind off.

## Right front band

With B from the RS, pick up and k same number of sts as left front band.

Row 1 (WS) K4, yo, k2tog, \*k14, yo, k2tog; rep from \* 5 times more, end k4 (6, 6, 8, 10). Knit 4 rows more. Bind off. Sew on buttons. ■

## 22 Pocket Tunic Pullover



Sized for Small, Medium, Large, X-Large and shown in size Small on page 51.

● ● ● ○ INTERMEDIATE

### Finished Measurements

- Bust 36 (39, 41, 44)"/91.5 (99, 104, 111.5)cm
- Length 30½ (31½, 32½, 33½)"/77.5 (80, 82.5, 85)cm
- Upper arm 12¼ (13, 14½, 15½)"/31 (33, 37, 39.5)cm

### Materials

- 9 (10, 12, 13) balls of Noro/KFI A *La Mode* in #1 (A)
- 1 ball in #11 (B)
- One pair each sizes 6 and 7 (4 and 4.5mm) needles, OR SIZE TO OBTAIN GAUGE
- One size 6 (4mm) circular needle, 16"/40cm long
- Two size 6 (4mm) double-pointed needles (dpn)
- Cable needle (cn)
- Stitch marker
- Stitch holders

### Gauge

18 sts and 26 rows = 4"/10cm over St st using larger needles.

TAKE TIME TO CHECK GAUGE.

### Stitch Glossary

C2R Sl next st to cn and hold to *back*, k1, k1 from cn.  
C2L Sl next st to cn and hold to *front*, k1, k1 from cn.

### Note

All contrast trims worked in the contrast B color are knit using an I-cord that is joined to the pieces while knitting.

### Back

With larger needles and A, cast on 81 (87, 93, 99) sts.

**Row 1 (WS)** Sl 1, [p1, k1] twice, p29 (32, 35, 38), k1, [p1, k1] 6 times, p29 (32, 35, 38), [k1, p1] twice, k1.

**Row 2 (RS)** Sl 1, [k1, p1] twice, k29 (32, 35, 38), p1, [k1, p1] 6 times, k29 (32, 35, 38), [p1, k1] twice, k1.

Rep the last 2 rows until piece measures 5"/12.5cm from beg, end with a WS row.

#### Frame the slit

**Row 1 (RS)** Sl 1, k1, p1, k1, C2R, k to the center 13 sts, rib 13, k to the last 6 sts, C2L, k1, p1, k2.

**Row 2** Sl 1, work as established to end.

**Row 3** Sl 1, k1, p1, C2R, work as established to the last 5 sts, C2L, p1, k2.

**Rows 4, 6 and 8** Rep row 2.

**Row 5** Sl 1, k1, C2R, work as established to the last 4 sts, C2L, k2.

**Row 7** Sl 1, C2R, work as established to the last 3 sts, C2L, k1.

**Row 9** Sl 1, work as established to end.

This ends the side slit.

Cont to work as established, working sl 1 st at beg of every row, the center 13 sts in rib and rem sts in St st, until piece measures 24"/61cm from beg.

#### Raglan armhole shaping

**\*\*Row 1 (RS)** Bind off 3 (3, 4, 4) sts, work in pat to end.

**Row 2** Bind off 3 (3, 4, 4) sts, work to last 2 sts, k2tog.

**Row 3** Bind off 2 sts, work to last 2 sts, k2tog.

**Row 4** Rep row 3.

**Row 5** Bind off 1 st, work to last 2 sts, k2tog.

**Row 6** Rep row 5.

**Row 7** Work to last 2 sts, k2tog—63 (69, 73, 79) sts.

**Row 8** Work even.

#### Beg raglan decreasing

**Row 9 (RS)** Sl 1, k1, p1, work in pat to last 3 sts, p1, k2.

**Row 10** Sl 1, p1, k1, work to last 3 sts, k1, p1, k1.

**Row 11** Sl 1, k1, p1, ssk, work in pat to last 5 sts, k2tog, p1, k2.

**Row 12** Rep row 10. \*\*

Rep rows 9–12 for 8 (9, 10, 11) times more. Then rep rows 11 and 12 for 0 (1, 2, 3) times more—45 (47, 47, 49) sts. Sl these sts to a st holder.

### Front

Work same as back until piece measures 10½"/26.5cm from beg.

### Beg pocket openings

**Row 1 (RS)** Sl 1, k9 (12, 15, 18), bind off 21 sts, k the next 2 sts, rib 13, k3, bind off 21 sts, k to end.

**Row 2** Sl 1, p9 (12, 15, 18), cast on 21 sts, p3, rib 13, p3; cast on 21 sts, p9 (12, 15, 18), k1.

Then, complete as for back.

### Sleeves

With smaller needles and A, cast on 35 (39, 43, 47) sts.

**Row 1 (WS)** Sl 1, \*p1, k1; rep from \* to end.

**Row 2 (RS)** Sl 1, \*k1, p1; rep from \* to end.

Rep these 2 rows for k1, p1 rib for 2"/5cm, end with a RS row. Change to larger needles.

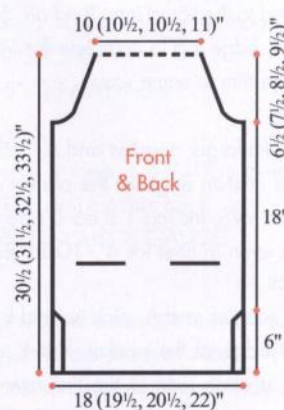
#### Beg patterns

**Row 1 (WS)** Sl 1, [p1, k1] 4 (5, 6, 7) times, p17, [k1, p1] 4 (5, 6, 7) times, k1.

**Row 2 (RS)** Sl 1, [k1, p1] 4 (5, 6, 7) times, k17, [p1, k1] 4 (5, 6, 7) times, k1.

Rep these 2 rows for 3 rows more.

**Inc row (RS)** Sl 1, M1 (in k or p to keep in rib pat), work to last st, M1 (in k or p to keep in rib pat), k1. Rep inc row every 10th (10th, 8th, 8th) row 9 (9, 10, 10) times more—55 (59, 65, 69) sts. Work even until piece measures 17½"/44.5cm from beg.



## Raglan cap shaping

Rep between \*\*s on back—35 (39, 43, 47) sts. Then, rep rows 9–12 for 7 (8, 9, 10) times more—21 (23, 25, 27) sts. Work 4 rows even. Then rep rows 11 and 12 for 0 (1, 2, 3) times more—21 sts. Sl these sts to a holder.

## Finishing

Block pieces to measurements. Sew the raglan sleeve caps into raglan armholes. Sew the side and sleeve seams.

## Neckband

With RS facing, circular needle and A, sl the 45 (45, 47, 47, 49) sts from back to circular needle, 21 sts from one sleeve to circular needle, 45 (45, 47, 47, 49) sts of front to circular needle—132 (136, 136, 140) sts. Join to work in rnds and place marker for beg of rnd.

**Rnd 1** Work in k1, p1 rib, dec'ing 1 st at each of the 4 raglan seams—128 (132, 132, 136) sts. Cont in k1, p1 rib for 1"/2.5cm. Bind off in rib.

## Contrast trim

With dpn and B, cast on 3 sts, then at end of these sts, beg at the raglan seam, \*pick up and k1 st in the neckband; slide sts to beg of needle and bring yarn around from the back to knit next row from the RS; k2, k2tog; rep from \* for trim until all sts from the neck are joined to the I-cord trim. Bind off. Sew bind-off and cast-on edge tog to complete the trim. Work the lower edge trim in same way.

## Pocket linings

From the RS with larger needles and A, pick up and k21 sts in the cast-on edge of the pocket opening. Purl first row on WS, inc'ing 1 st each side of row—23 sts. Work even in St st for 4"/10cm. Bind off.

## Pocket trims

With smaller needles and A, pick up and k 21 sts in the bound-off edge of the pocket. Work in k1, p1 rib inc'ing 1 st each side of the first row—23 sts. Work 5 rows more in rib. Bind off in rib. Then work the contrast I-cord trim as for previous edges to trim the top of the pockets. Sew the pocket linings in place on the WS. Sew the pocket trims in place to the front. ■

## 23 Infinity Scarf



Shown on pages 52 and 53.

●●●○ INTERMEDIATE

## Finished Measurements

- Width 8½"/21.5cm
- Circumference 48"/122cm

## Materials

- 1 roll of Noro/KFI *Rainbow Roll* in #1011 (A)
- 1 skein of Noro/KFI *Silk Garden Sock Solo* in #7 (B)
- One size H/8 (5mm) crochet hook OR SIZE TO OBTAIN GAUGE
- Stitch marker

## Gauge

4½ dc clusters by 4½ dc cluster rows = 4"/10cm over pat st using size H/8 (5mm) crochet hook. TAKE TIME TO CHECK GAUGE.

## Note

When crocheting with the *Rainbow Roll* roving, work loosely and do not put a lot of tension on the yarn, in order to avoid breakage.

## Stitch Glossary

**Sc cluster stitch** Insert hook in designated st and draw up lp, yo, insert hook in same st and draw up a lp, yo, draw up another loop, yo and draw through all 6 lps on hook.

## Scarf

With A, ch 30.

**Row 1** Dc in 3rd ch from hook, and in each ch to end—29 sts. Do not turn. Slide last A st off hook (this will be picked up again on Row 3).

**Row 2** Join B to beg of row, with B, work sl st between first 2 dc, ch 1, work sc cluster in same st as sl st, \*ch 2, skip 3 dc, work sc cluster between last skipped dc and next dc; rep from \* to last dc, ch 2, work sc cluster between previous 3-dc cluster and last dc, ch 3, draw up 4"/10cm of yarn in last loop and remove hook.

**Row 3** Picking up last A st with hook, turn and work 2 sc over the last ch-3 of B, ch 1, \*work 3 dc in ch-2 sp of B; rep from \* to end of row, dc in last dc in A from row 1. Do not turn. Slide last st of A off hook.

**Row 4** At beg of row, pick up last B st and tighten lp, work sc cluster in ch-1 sp in A, \*ch 2, skip 3 dc, work sc cluster between last skipped dc and next dc; rep from \* to last dc of row, ch 2, work sc cluster between previous 3-dc cluster and last dc, ch 3, draw up 4"/10cm of yarn in last loop.

**Row 5** Picking up last A st with hook, turn and work 2 sc over the last ch-3 in B, ch 1, \*work 3 dc in ch-2 sp of B; rep from \* to end of row, dc in last ch in A. Do not turn. Slide last st of A off hook.

Rep rows 4 and 5 for pat st until piece measures 48"/122cm, ending with a pat row 5.

**Joining row (WS)** Pick up beg row upside down and last row and hold together. Work row 4 loosely into both the last row and the bottom of the first row, omitting last ch3. Fasten off.

## Tie

With 2 strands B held tog, chain approx 20"/51cm. Fasten off.

## Tassels

(make 2)

Cut a piece of cardboard approx 5½"/14cm wide. Wrap A approx 180 times around a piece of cardboard.

Cut a strand of B and insert it between the cardboard and wrapped yarn and tie it at the top leaving an end to attach to the tie.

Cut the lower edge of the bundled yarn to free the wrapped strands.

With 1 strand B, ch approx 5½"/14cm. Fasten off.

Tie chain around the upper quarter of the fibers. Trim the strands. Attach a tassel to each end of the tie. Wrap tie around scarf and tie. ■



## 24 Duster Vest



Sized Small, Medium, Large and shown in size Small on page 54.

●●○○ EASY

### Finished Measurements

- Bust 41 (44, 47)"/104 (111.5, 119)cm
- Length (while wearing) approx 28 1/4 (28 1/2, 29)"/72 (72.5, 73.5)cm

### Materials

- 6 (7, 8) balls of Noro/KFI Kureopatora in #1001
- One size 1/9 (5.5mm) crochet hook OR SIZE TO OBTAIN GAUGE
- Stitch marker

### Gauge

12 sts and 9 rows = 4"/10cm over pat st using size 1/9 (5.5mm) crochet hook.

TAKE TIME TO CHECK GAUGE.

### Note

Vest is worked sideways in one piece.

### Pattern Stitch

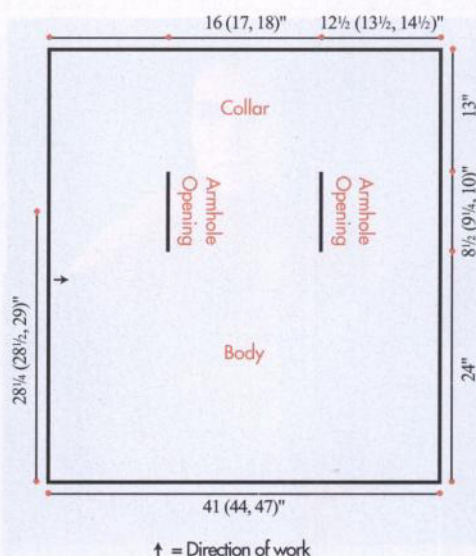
(over an odd number of sts)

**Row 1** Dc in 4th ch from hook and in each ch to end. Ch 1, turn.

**Row 2** Sc in first dc, ch 2, skip next dc, sc in space between last skipped st and next dc, \*ch 2, skip next 2 dc, sc in space between last skipped st and next dc; rep from \* end ch 2, sc in top of beg ch 3. Ch 3, turn.

**Row 3** Work 2 dc in each ch-2 sp across to last ch-2 sp, dc in last ch-2 sp, dc in last sc. Ch 1, turn.

Rep rows 2 and 3 for pat st.



### Vest

Ch 141 (143, 145). Work in pat st as foll:

**Row 1** Dc in 4th ch from hook, and in each ch to end—139 (141, 143) sts. Ch 1, turn.

**Rows 2–27** Rep rows 2 and 3.

**Row 28** Sc in first dc, ch 2, skip next dc, sc in space between last skipped st and next dc, [ch 2, skip next 2 dc, sc in space between last skipped st and next dc] 35 times, ch 38 (41, 44) for armhole opening, skip next 13 (14, 15) 2-dc groups, work sc between last skipped st and next dc, cont in pat to end. Ch 3, turn.

**Row 29** Rep row 3, working across 38 (41, 44) ch as foll: [skip 1 ch, dc in each of next 2 ch] 12 (13, 14) times, skip last 2 ch, work in pat to end. Ch 1, turn.

**Rows 30–63 (30–65, 30–67)** Rep rows 2 and 3.

**Rows 64 and 65 (66 and 67, 68 and 69)** Rep rows 28 and 29.

**Rows 66–92 (68–94, 70–96)** Rep rows 2 and 3.

Fasten off. ■



## 25 Poncho



Sized for one size fits most and shown on page 55.

●●○○ EASY

### Finished Measurements

- Width across back or front 31"/78.5cm
- Length 28"/71cm

### Materials

- 5 rolls of Noro/KFI Rainbow Roll in #1015
- One size J/10 (6mm) crochet hook OR SIZE TO OBTAIN GAUGE
- Two 1 1/2"/38mm buttons

### Gauge

15 sts and 13 rows = 4"/10cm over pat st using size 1/9 (5.5mm) crochet hook.

TAKE TIME TO CHECK GAUGE.

### Note

Poncho is worked sideways in two squares that are sewn tog at the top shoulder seams. A button is sew through both thicknesses at each side seam to form the armhole opening.

### Back

Ch 105.

**Row 1 (RS)** Sc in 2nd ch from hook, and in next 19 ch, \*ch 2, skip 2 ch, sc in next ch; rep from \* to end. Ch 1, turn.

**Row 2** \*Sc in next sc, ch 2, skip next ch-2 sp; rep from \* to last 20 sc (these sts are worked in the pat st), working through *back loops only* sc in each sc to end (these 20 sts form the lower edge). Ch 1, turn.

**Row 3** Working through *back loops only* sc in first 20 sc, \*ch 2, skip next ch-2 sp, sc in next sc; rep

from \* to end. Ch 1, turn.

Rows 4–100 Rep rows 2 and 3. Fasten off.

## Front

Work same as back.

## Finishing

Sew front and back tog at the shoulders, leaving the center 12"/30.5cm unsewn for neck opening.

## Turtleneck

With RS facing, join yarn at one shoulder seam and ch 41, turn.

Row 1 Sc in 2nd ch from hook and in each ch to end, sl st in next st on neck edge to join turtleneck to sweater. Ch 1, turn.

Row 2 Working through back loops only sc in each sc. Ch 1, turn.

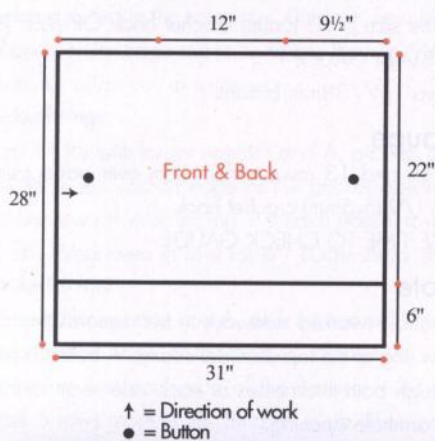
Row 3 Working through back loops only sc in each sc, sl st in next st on neck edge. Ch 1, turn.

Rep rows 2 and 3, working evenly around entire neck opening.

Join the last row to foundation ch with sc.

Fasten off.

Sew one button, working through both front and back pieces, at each side edge (see schematic for placement, or where desired) to form the armhole opening. ■



## 26 Mitered Square Scarf



Shown on page 56.



## Finished Measurements

- Width 9"/23cm
- Length 66"/167.5cm

## Materials

- 4 hanks of Noro/KFI Hakone in #8
- One each sizes L-11 and M/N-13 (8 and 10mm) crochet hooks OR SIZE TO OBTAIN GAUGE

## Gauge

One large square = 9"/23cm using larger hook. TAKE TIME TO CHECK GAUGE.

## Stitch Glossary

**Extended single crochet (esc)** Insert hook in indicated st, yo and draw up a lp, yo, draw through 1 lp, yo, draw through 2 lps.

**Corner (worked across 3 sts)** Insert hook in next st, yo and draw up a lp, yo, draw through 1 lp, skip 1 st, insert hook in next st, yo and draw up a lp, yo, draw through 1 lp, yo, draw through 3 lps.

## 1st Large Square

With larger hook, ch 34.

Row 1 Esc in 2nd ch from hook and next 14 ch, work corner, esc in last 15 ch—31 sts. Ch 1, turn.

Row 2 Esc in first 14 sts, work corner, esc in last 14 sts—29 sts. Ch 1, turn.

**Note** Ch 1, turn at end of every row unless otherwise noted.

Row 3 Esc in 13 sts, corner, esc in 13 sts—27 sts.

Row 4 Esc in 12 sts, corner, esc in 12 sts—25 sts.

Row 5 Esc in 11 sts, corner, esc in 11 sts—23 sts.

Row 6 Esc in 10 sts, corner, esc in 10 sts—21 sts.

Row 7 Esc in 9 sts, corner, esc in 9 sts—19 sts.

Row 8 Esc in 8 sts, corner, esc in 8 sts—17 sts.

Row 9 Esc in 7 sts, corner, esc in 7 sts—15 sts.

Row 10 Esc in 6 sts, corner, esc in 6 sts—13 sts.

Row 11 Esc in 5 sts, corner, esc in 5 sts—11 sts.

Row 12 Esc in 4 sts, corner, esc in 4 sts—9 sts.

Row 13 Esc in 3 sts, corner, esc in 3 sts—7 sts.

Row 14 Esc in 2 sts, corner, esc in 2 sts—5 sts.

Row 15 Esc in 1 st, corner, esc in 1 st—3 sts.

Row 16 Work corner, do not turn—1 st. Mark this as RS.

## 2nd Large Square

Row 1 Ch 1, work 16 esc down left side of previous square, with larger hook, ch 18, turn—34 sts.

Row 2 With smaller hook esc in back loop of 2nd and next 14 ch, work corner, esc in next 15 sts—31 sts. Ch 1, turn.

Rows 3–17 Rep rows 2–16 of 1st large square.

## 1st Small Square

Row 1 With RS facing, work 16 esc down left side of previous square, with larger hook ch 10, turn.

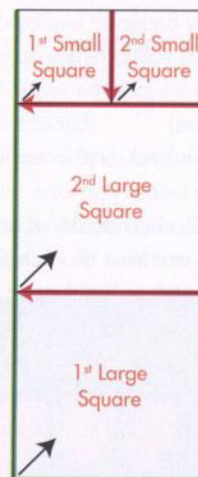
Row 2 With smaller hook esc in back bump of 2nd and next 6 ch, work corner using last 2 ch and next st, esc in next 7 sts—15 sts. Ch 1, turn.

Row 3–9 Rep rows 10–16 of 1st large square, but turn after last row and do not mark as RS.

## 2nd Small Square

Row 1 Ch 1, with smaller hook, work 7 esc down side of 1st Small Square, work corner working first st into side of Small Square and last st into next st at top to last (Large) Square, work 7 esc across top of

## PLACEMENT DIAGRAM



last (Large) Square—15 sts. Ch 1, turn.

**Row 2–8** Rep rows 3–9 of 1st Small Square, but do not turn after last row.

Repeat 2nd Large Square twice.

Repeat 1st and 2nd Small Squares once.

Repeat 2nd Large Square twice. Fasten off. ■

## 27 Spiral Shawl



Shown on page 57.

●●○○ EASY

### Finished Measurements

- Width 6"/15.5cm
- Length 66"/167.5cm

### Materials

- 3 balls of Noro/KFI Silk Garden Lite in #2093
- One size H-8 (5mm) crochet hooks OR SIZE TO OBTAIN GAUGE

### Gauge

15 dc and 8 rows = 4"/10cm using size H-8 (5mm) hook.

TAKE TIME TO CHECK GAUGE.

### Shawl

Ch 27.

**Row 1** Sc in 2nd ch from hook and next 6 ch, hdc in next 9 ch, dc in next 9 ch, 2 dc in last ch—27 sts. Ch 6, turn.

**Row 2** Sl st in 3rd ch from hook (picot made)—this turning ch and picot counts as 1 dc with picot—dc in same st (1 inc), skip 3 ch, dc in next 9 sts, hdc in next 9 sts, sc in next 8 sts—28 sts. Ch 4, turn.

**Row 3** Sc in 2nd ch from hook and in next 2 ch, sc in next 4 sts, hdc in next 9 sts, dc in next 9 sts, 2 dc

in next st, leave last 5 sts unworked. Ch 6, turn.

Rep rows 2 and 3 until 60 picot points have been made, ending with a row 2 and do not ch and turn at end of last row, but work 2 more sc in last st.

Rotate piece and work sc evenly along straight edge Ch 1, turn. Sc to last 3 sts, sl st in each of next 2 sts. Fasten off. ■

## 28 Trapezoidal Shawl



Shown on pages 58 and 59.

●●○○ EASY

### Finished Measurements

- Width 80"/203cm
- Length 18"/46cm

### Materials

- 4 balls of Noro/KFI Silk Garden Sock in #415
- One size G-6 (4mm) crochet hook OR SIZE TO OBTAIN GAUGE

### Gauge

4½ dc clusters and 8 rows = 4"/10cm using size G-6 (4mm) hook.

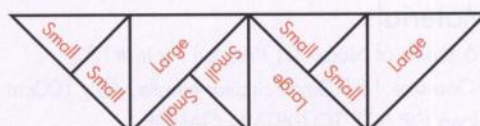
TAKE TIME TO CHECK GAUGE.

### Large Triangle

**Set-up row** Ch 6, join with sl st to first ch, ch 4.

**Row 1** Working into the ch-6 loop, 3 dc, ch 3, 3 dc, ch 1, 1 dc. Ch 4, turn.

**Row 2** Work 3 dc in ch-1 sp, ch 1, (3 dc, ch 3, 3



dc) in ch-3 sp, ch 1, (3 dc, ch 1, 1 dc) in last ch sp. Ch 4, turn.

**Row 3** \*3 dc in next ch-1 sp, ch 1; rep from \* to center ch-3 sp, (3 dc, ch 3, 3 dc) in ch-3 sp, \*ch 1, 3 dc in next ch-1 sp; rep from \* to ch-4 sp at end of row, ch 1, (3 dc, ch 1, 1 dc) in ch-4 sp. Ch 4, turn.

**Rows 4–19** Rep row 3. Fasten off.

### Small Triangle

Work rows 1–3 same as large triangle.

**Rows 4–14** Rep row 3. Fasten off.

### Shawl

Make six small triangles and three large triangles. Join triangles tog foll diagram. Orientation of last row worked identifies RS/WS of triangle. On WS, sl st triangles together through one thread of each piece, going through back loop of dc for short edges of triangles and side edge of stitches on long edge of triangles.

### Finishing

Block final piece to measurements. ■

## 29 Garter and Stockinette Stitch Blanket



Shown on page 61.

●●○○ EASY

### Finished Measurements

Approx 36 x 48"/91 x 122cm

### Materials

- 6 skeins of Noro/KFI Kureyon Air in #332
- One size 15 (10mm) circular needle, 40"/100cm long OR SIZE TO OBTAIN GAUGE

### Gauge

8 sts and 12 rows = 4"/10cm over St st using size 15 (10mm) needle.

TAKE TIME TO CHECK GAUGE.

## NOTES

- 1) Slip all stitches purlwise with yarn held in front.
- 2) Circular needle is used to accommodate the large number of sts. Do not join.

## Pattern Stitch

- Row 1 (RS) Sl 1 wyif, k to end.  
 Row 2 Sl 1 wyif, k16, p11, k15, p11, k17.  
 Rows 3–6 Rep rows 1 and 2 twice.  
 Row 7 Sl 1 wyif, k to end.  
 Row 8 Sl 1 wyif, k2, p12, k15, p11, k15, p12, k3.  
 Rows 9–12 Repeat rows 7 and 8 twice.  
 Rep rows 1–12 for pat st.

## Blanket

Cast on of 71 sts.

## Border

Rows 1–4 Sl 1 wyif, k to end.

## Beg Pat St

Rep rows 1–12 of pat st 12 times. Work rows 1–6 once more. Work rows 1–4 of border. Bind off. ■

## 30 Garter and Rib Blanket



Shown on page 62.

●●○○○ EASY

## Finished Measurements

Approx 36 x 48"/91 x 122cm

## Materials

- 6 skeins of Noro/KFI Kureyon Air in #40
- One size 15 (10mm) circular needle, 40"/100cm long OR SIZE TO OBTAIN GAUGE

## Gauge

8 sts and 12 rows = 4"/10cm over St st using size

15 (10mm) needle.

TAKE TIME TO CHECK GAUGE.

## NOTES

- 1) Slip all stitches purlwise with yarn held in front.
- 2) Circular needle is used to accommodate the large number of sts. Do not join.

## Pattern Stitch

(multiple of 4 sts plus 3)

- Row 1 (RS) Sl 1 wyif, k to end.  
 Row 2 Sl 1 wyif, k2, p to last 3 sts, k3.  
 Row 3 Sl 1 wyif, k2, \*k1, p3; rep from \* to last 4 sts, k4.  
 Row 4 Sl 1 wyif, k2, \*p1, k3; rep from \* to end.  
 Rep rows 1–4 for pat st.

## Blanket

Cast on of 71 sts.

## Border

Rows 1–4 Sl 1 wyif, k to end.

## Beg Pat St

Rep rows 1–4 of pat st until piece measures approx. 46½"/118cm from beg. Work rows 1–4 of border. Bind off. ■

## 31 Slip Stitch Rib Blanket



Shown on page 63.

●●○○○ EASY

## Finished Measurements

Approx 36 x 48"/91 x 122cm

## Materials

- 6 skeins of Noro/KFI Kureyon Air in #102
- One size 15 (10mm) circular needle, 40"/100cm long OR SIZE TO OBTAIN GAUGE

## Gauge

Approx 8 sts and 12 rows = 4"/10cm over St st using size 15 (10mm) needle.

TAKE TIME TO CHECK GAUGE.

## NOTES

- 1) Slip all stitches purlwise with yarn held in front.
- 2) Circular needle is used to accommodate the large number of sts. Do not join.

## Slip Stitch Rib

(multiple of 4 sts plus 3)

- Row 1 (RS) Sl 1 wyif, k2, \*sl 1 wyif, p1, k1, p1; rep from \* to last 4 sts, sl 1 wyif, k3.  
 Rows 2 and 4 Sl 1 wyif, k2, \*p1, k1; rep from \* to last 4 sts, p1, k3.  
 Row 3 Sl 1 wyif, k2, \*k1, p1, sl 1 wyif, p1; rep from \* to last 4 sts, k4.  
 Rep rows 1–4 for sl st rib.

## Blanket

Cast on of 79 sts.

## Border

Rows 1–4 Sl 1 wyif, k to end.

## Beg Pat St

Set Up Row 1 (RS) Sl 1 wyif, k2, \*k1, p1; rep from \* to last 4 sts, k4.  
 Set Up Row 2 Sl 1 wyif, k2, \*p1, k1; rep from \* to last 4 sts, p1, k3.  
 Rep rows 1–4 of sl st rib until piece measures approx. 46½"/118cm from beg, end with a WS row.  
 Work rows 1–4 of border. Bind off. ■

## 32 Thrummed Mittens



Sized for Woman's Medium/Large and shown on page 18.

- Hand circumference 8½"/21.5cm
- Length 10"/25.5cm

- 2 skeins of Noro/KFI *A La Mode* in #17 (MC)
- 1 roll of Noro/KFI *Rainbow Roll* in #1009 (CC)
- One set (5) size 6 (4mm) double-pointed needles (dpn) OR SIZE TO OBTAIN GAUGE
- Stitch markers
- Stitch holder
- Tapestry needle

18 sts and 24 rnds = 4"/10cm over thrummed St st  
 foll chart using size 6 (4mm) needles.  
**TAKE TIME TO CHECK GAUGE.**

**Thrum Stitch** Insert RH needle into next st knitwise. Wrap thrum around right needle tip, then wrap working yarn around needle as usual to knit. Pull both thrum and working yarn through st on LH needle. Drop old st from LH needle. On the following row, the thrum and working yarn are knit together through the back loop.

- 1) See Thrumming Workshop on page 19 for more information on the Thrumming method.
- 2) If you want the colors of the thrums to match on each mitten, work both mittens at the same time on separate sets of needles. Work the first thrummed row of Mitten #1, then work the first thrummed row of Mitten #2 using the next batch of thrums in the color sequence. Continue alternating mittens for each thrummed row.

With MC, Cast on 40 sts.  
Divide sts evenly on over 4 dpn (10 sts each needle). Join, being careful not to twist sts and place marker (pm) for beg of rnd.  
**Rnd 1** \*K2, p2; rep from \* around.  
Rep rnd 1 for k2, p2 rib until piece measures 3'/7.5cm from beg.

Rnd 1 K1, pm, knit to end.  
 Rnd 2 M1, k1, M1, slip marker, k to end.  
 Rnd 3 K1, thrum st in CC, k1, sl marker, \*k1, thrum  
 st in CC, k2; rep from \* around.

Cut yarn, leaving a tail. Thread tail through rem sts, draw tog and secure end.

Make a 2nd mitten in same way. ■








- ☐ k on RS, p on WS
- ☐ k1 tbl
- ☒ thru st in CC
- ☐ M1

A 32x32 grid representing a chessboard. The squares are numbered 1 through 32 along the right edge. A knight's tour path is highlighted in red, starting at square 1 (bottom-left) and visiting every square exactly once, ending at square 32 (top-right). The path is a single continuous line of red squares.

## STANDARDS & GUIDELINES FOR CROCHET AND KNITTING

### STANDARD YARN WEIGHT

Categories of yarn, gauge ranges, and recommended needle and hook sizes

Yarn Weight Symbol & Category Names	 0 Lace	 1 Super Fine	 2 Fine	 3 Light	 4 Medium	 5 Bulky	 6 Super Bulky
Type of Yarns in Category	Fingering 10 count crochet thread	Sock, Fingering, Baby	Sport, Baby	DK, Light Worsted	Worsted, Afghan, Aran	Chunky, Craft, Rug	Bulky, Roving
Knit Gauge Range* in Stockinette Stitch to 4 inches	33–40** sts	27–32 sts	23–26 sts	21–24 sts	16–20 sts	12–15 sts	6–11 sts
Recommended Needle in Metric Size Range	1.5–2.25 mm	2.25–3.25 mm	3.25–3.75 mm	3.75–4.5 mm	4.5–5.5 mm	5.5–8 mm	8 mm and larger
Recommended Needle U.S. Size Range	000 to 1	1 to 3	3 to 5	5 to 7	7 to 9	9 to 11	11 and larger
Crochet Gauge* Ranges in Single Crochet to 4 inch	32–42 double crochets**	21–32 sts	16–20 sts	12–17 sts	11–14 sts	8–11 sts	5–9 sts
Recommended Hook in Metric Size Range	Steel*** 1.6–1.4mm Regular hook 2.25 mm	2.25–3.5 mm	3.5–4.5 mm	4.5–5.5 mm	5.5–6.5 mm	6.5–9 mm	9 mm and larger
Recommended Hook U.S. Size Range	Steel*** 6, 7, 8 Regular hook B–1	B–1 to E–4	E–4 to 7	7 to I–9	I–9 to K–10½	K–10½ to M–13	M–13 and larger

\* GUIDELINES ONLY: The above reflect the most commonly used gauges and needle or hook sizes for specific yarn categories.

\*\* Lace weight yarns are usually knitted or crocheted on larger needles and hooks to create lacy, openwork patterns. Accordingly, a gauge range is difficult to determine. Always follow the gauge stated in your pattern.

\*\*\* Steel crochet hooks are sized differently from regular hooks—the higher the number, the smaller the hook, which is the reverse of regular hook sizing.

This Standards & Guidelines booklet and downloadable symbol artwork are available at: [YarnStandards.com](http://YarnStandards.com)

## GAUGE

**Knitting gauge**—the number of stitches and rows per inch—determines the size of the garment you are making. Every knitting pattern states the gauge, or “tension,” on which the sizing is based. For successful results, it is essential to test your knitting against this measurement before you start a project. Make a test swatch at least 4”/10cm square, using the yarn and needle size called for in the pattern. Then measure your swatch using a ruler or a knit gauge tool. If the number of stitches and rows does not match the pattern’s gauge, you must change your needle size. An easy rule to follow is: TO GET FEWER STITCHES TO THE INCH/CM, USE A LARGER NEEDLE; TO GET MORE STITCHES TO THE INCH/CM, USE A SMALLER NEEDLE. Try different needle sizes until you get the proper stitch and row gauge.

## GLOSSARY

### bind off

To finish off an edge and keep stitches from unraveling by lifting the first stitch over the second, the second over the third, etc. (U.K.: cast off)

### bind off in ribbing

Maintain the rib pattern as you bind off (knit the knit stitches; purl the purl stitches). (U.K.: cast off in ribbing)

### cast on

Form a foundation row by making specified number of loops on the knitting needle.

### decrease

Reduce the number of stitches in a row (i.e., knit 2 together; purl 2 together).

### increase

Add to the number of stitches in a row (i.e., knit in front and back of stitch).

### knitwise

Insert the needle into the stitch as if you were going to knit it.

### make one

Insert tip of LH needle from front to back under the strand between the last stitch worked and the next stitch on the needle. Knit into the back loop to increase one stitch.

### make one purl stitch

With the needle tip, lift the strand between the last stitch worked and the next stitch on left-hand needle and purl it. One purl stitch has been added.

### no stitch

On some charts, “no stitch” is indicated with shaded spaces where stitches have been decreased or not yet made. In such cases, work the stitches of the chart,

skipping over the “no stitch” spaces.

### place markers

Loop a piece of contrasting yarn or a purchased stitch marker onto the needle.

### pick up and knit (purl)

Knit (or purl) into the loops along an edge.

### purlwise:

Insert the needle into the stitch as if you were going to purl it.

### selvage stitch

Edge stitch that helps make seaming easier.

### skip

Skip specified number of stitches of the previous row and work into next stitch. (U.K.: miss)

### slip, slip, knit

Slip next two sts knitwise, one at a time, to right-hand needle. Insert tip of left-hand needle into fronts of these sts from left to right and knit them together to decrease one stitch.

### slip stitch

In knitting, pass a stitch from the left-hand to the right-hand needle as if to purl without working it. In crochet, insert hook through loop or edge, yarn over and pull through loop on hook. (U.K.: abbreviation—ss or sc)

### work even

Continue in specified pattern without increasing or decreasing. (U.K.: work straight)

### yarn over

In knitting, make a new stitch by placing the yarn over the right-hand needle. (U.K.: yfwd, yon, yrn) In crochet, wind yarn around hook. (U.K.: yoh or yrh)

# STOCKISTS

## UNITED STATES ALASKA

**The Quilt Tree**  
341 E Benson Blvd  
Suite 5  
Anchorage, AK 99503  
(907) 561-4115  
www.quilttree.com

**Hive on the Creek**  
716 Totem Way #1  
Ketchikan, AK 99901  
(907) 225-9161

**ARIZONA**  
**Purl in the Pines, LLC**  
2544 North 4th Street  
Flagstaff, AZ 86004  
(928) 774-9334  
www.purlinthepines.com

**Birdhouse Yarns**  
2540 East 6th Street  
Tucson, AZ 85716  
(520) 305-4187  
www.birdhouseyarns.com

**ARKANSAS**  
**The Rabbit's Lair**  
116 South First Street  
Rogers, AR 72756  
(479) 636-3385 www.therabbitslair.com

**CALIFORNIA**  
**Ball & Skein & More**  
4210 Bridge Street, Unit 6  
Cambria, CA 93428  
(805) 927-3280  
www.cambriayarn.com

**The Black Sheep**  
1060 South Coast Hwy 101  
Encinitas, CA 92024  
(760) 436-9973  
www.theblacksheep.biz

**Common Threads**  
191 N. El Camino Real #201  
Encinitas, CA 92024  
(760) 436-6119  
www.fiberartshop.com

**Janna's Needle Art**  
1085 E Herndon Ave  
Suite 104  
Fresno, CA 93720  
(559) 227-6333

**Purls of Joy**  
461 Healdsburg Avenue  
Healdsburg, CA 95448  
(707) 433-JOYS  
www.purlofjoy.com

**Uncommon Threads**  
293 State Street  
Los Altos, CA 94022  
(650) 941-1815  
uncommonthreadsyarn.com

**Lofty Lou's Yarn Shop**  
585 Main Street  
Placerville, CA 95667  
(530) 642-2270  
www.knit.us

**Atelier Marin**  
217 San Anselmo Avenue  
San Anselmo, CA 94960  
(415) 256-9618  
www.atelieryarns.com

**ImagiKnit**  
3897 18th Street  
San Francisco, CA 94114  
(415) 621-6642  
www.imagiknit.com

**Pincushion Sew & Craft**  
2254 Union Street  
San Francisco, CA 94123  
(415) 254-1403  
www.pincushionsewandcraft.com

**Eva's Needlework**  
1321 E. Thousand Oaks Blvd.  
Thousand Oaks, CA 91362  
(805) 379-0722  
www.evasneedlework.com

**Stitch Café**  
12443 Magnolia Blvd.  
Valley Village, CA 91607  
(818) 980-1234  
www.stitchcafe.com

**Velona Needlecraft**  
22435 La Palma Ave., Ste A  
Yorba Linda, CA 92887  
(714) 692-2286  
www.velona.com

**COLORADO**  
**I Love Knitting**  
600 S. Holly Street, Unit 102  
Denver, CO 80246  
(303) 399-5648  
www.iloveknittingdenver.com

**LambShoppe**  
3512 East 12th Avenue  
Denver, CO 80246  
(303) 322-2223  
www.thelambshoppe.com

**Yarn Durango**  
755 East 2nd Avenue  
Durango, CO 81301  
(970) 259-9827  
www.yarndurango.com

**Wooden Spools**  
2805 S. Broadway  
Englewood, CO 80113  
(303) 761-9231  
www.woodenspools.com

**Lambspun**  
1101 E Lincoln Avenue  
Fort Collins, CO 80526  
(970) 484-1998  
www.lambspun.com

**CONNECTICUT**  
**Village Wool LLC**  
2279 Main Street  
Glastonbury, CT 06033  
(860) 633-0898  
www.villagewoolyarnshop.com

**Woolworks Ltd.**  
154 Main Street  
Putnam, CT 06260  
(860) 963-1228  
woolworksyarnofputnam.com

**The Yarn Barn**  
1666 Litchfield Turnpike  
Woodbridge, CT 06525  
(203) 389-5117  
www.theyarnbarn.com

**DELAWARE**  
**Sea Needles**  
780 Garfield Parkway  
Bethany Beach, DE 19930  
(302) 539-0574  
www.seaneedlesbethany.com

**FLORIDA**  
**Knit and Stitch Inc.**  
15 Stone Street  
Cocoa, FL 32922  
(321) 632-4579  
www.knitandstitchboutique.com

**Criativity**  
720 9th Avenue SW  
Largo, FL 33770  
(727) 584-4191

**Sip & Knit**  
9400 S. Hwy 17-92 #1016  
Maitland, FL 32751  
(407) 622-5648  
www.sipandknit.com

**GEORGIA**  
**The Frayed Knot**  
6 West State Street  
Savannah, GA 31401  
(912) 233-1240  
thefrayed-knot.myshopify.com

**Eat.Sleep.Knit**  
6400 Highlands Pkwy, Ste 1  
Smyrna, GA 30082  
(770) 432-9277  
www.eatsleepknit.com

**IDAHO**  
**Knit-n-Crochet**  
600 West Kathleen Ave. #30  
Coeur d'Alene, ID 83815  
(208) 676-9276  
www.knit-n-crochet.com

**Alpaca Direct**  
1016 West Hayden Avenue  
Hayden, ID 83835  
(888) 306-0111  
www.alpacadirect.com

**ILLINOIS**  
**Fiber Wild!**  
304 S. Main Street  
Galena, IL 61036  
(815) 777-3550  
www.fiberwild.com

**Mosaic Yarn Studio**  
109 W. Prospect Avenue  
Mount Prospect, IL 60056  
(847) 390-1013  
www.mosaicyarnstudio.com

**Three Bags Full**  
1927 Cherry Lane  
Northbrook, IL 60062  
(847) 291-9933  
threebagsfullknittingstudio.com

**INDIANA**  
**Knit Stop**  
3941 East 82nd Street  
Indianapolis, IN 46240  
(317) 595-5648  
www.knit-stop.com

**Sheepskeins**  
1109 Highway 662 W  
Newburgh, IN 47630  
(812) 842-0200

**The Black Sheep**  
1095 Conner Street  
Noblesville, IN 46060  
(317) 900-7117  
www.theblacksheepnyarn.com

**IOWA**  
**Knitting Next Door**  
704 SW 3rd Street  
Ankeny, IA 50023  
(515) 963-0396  
www.knittingnextdoor.com

**KANSAS**  
**Unwind**  
121 S. 4th Street, Ste 106  
Manhattan, KS 66502  
(785) 320-7334  
www.unwindmhc.com

**A New Twist Yarn Shop**  
607 W. Douglas Avenue  
Wichita, KS 67213  
(316) 262-9276  
www.anewtwist.org

**KENTUCKY**  
**The Stitch Niche**  
180 Moore Drive #B  
Lexington, KY 40503  
(859) 277-2604  
www.thestitchnicheky.com

**LOUISIANA**  
**The Quarter Stitch**  
629 Chartres Street  
New Orleans, LA 70130  
(504) 522-4451

**MAINE**  
**Halcyon Yarn**  
12 School Street  
Bath, ME 04530  
(207) 442-7909  
www.halcyonyarn.com

**The Cashmere Goat**  
20 Bayview Street  
Camden, ME 04843  
(207) 236-7236  
thecashmeregoatknit.com

**Mother of Purl Yarn Shop**  
541 US Route 1, Suite 11  
Freeport, ME 04032  
(207) 869-5280  
www.motherofpurllyarn.com

**MARYLAND**  
**Vulcan's Rest Fibers**  
106 George Street  
Chesapeake City, MD 21915  
(410) 885-2890  
www.vulcansrest.com

**A Knit and Sew Studio at Woolstock**  
4830 Butler Road  
Glyndon, MD 21071  
(410) 517-1020  
www.woolstock.com

**Crazy for Ewe**  
22715 Washington Street  
Leonardtown, MD 20650  
(301) 475-2744  
www.crazyforewe.com

**Black Sheep Yarn Shop**  
9612 Deereco Road  
Lutherville-Timonium, MD 21093  
(410) 628-9276  
www.blacksheepnyarnshop.com

**Salty Yarns**  
8th Street and Boardwalk  
Ocean City, MD 21842  
(410) 289-4667  
www.saltyyarns.com

**So Original**  
3493 Olney-Laytonsville Road  
Olney, MD 20832  
(301) 774-7970  
www.sooriginal.com

**MASSACHUSETTS**  
**Webs-America's Yarn Store**  
75 Service Center Road  
Northampton, MA 01061

(800) FOR-WEBS  
www.yarn.com

**Island Yarn Company**  
85 River Street  
Waltham, MA 02453  
(781) 894-1802  
islandyarncompany.com

**MICHIGAN**  
**A Piece of Ewe**  
602 Saginaw Street  
Bay City, MI 48708  
(989) 892-6400

**Yarn Garden**  
111 W. Lawrence Avenue  
Charlotte, MI 48813  
(517) 541-9323  
www.yargardenmichigan.com

**Artisan Knitworks**  
23616 Farmington Road  
Farmington, MI 48336  
(248) 427-0804  
www.artisanknitworks.com

**Michigan Fine Yarns**  
37519 Ann Arbor Road  
Livonia, MI 48150  
(734) 462-2800  
www.miknitboutique.com

**Ewe-Nique Knits**  
515 S. Lafayette Ave., Ste D  
Royal Oak, MI 48067  
(248) 584-3001  
www.ewe-niqueknits.com

**MINNESOTA**  
**Hugga Bugga Yarns**  
20225 Chesterfield Way  
Farmington, MN 55024  
(612) 308-1714  
www.huggabugga.com

**3 Kittens Needle Arts**  
750 Main Street, Ste. 112  
Mendota Heights, MN 55118  
(651) 457-4969  
www.3kittensneedlearts.com

**Hank and Purl's**  
1623 North Broadway  
River Center Plaza  
Rochester, MN 55906  
(507) 226-8045  
www.hankandpurls.com

**MISSOURI**  
**Knitorious**  
3268 Watson Road  
St. Louis, MO 63139  
(314) 646-8276  
www.knitorious.com

**MONTANA**  
**Yarn Scout**  
1203 N. Rouse, Ste 3C  
Bozeman, MT 59715  
(406) 577-2088  
www.yarnscout.com

**NEBRASKA**  
**Yarn Charm**  
4640 Bair Avenue, Ste 214  
Lincoln, NE 68504  
(402) 858-6300  
www.yarncharm.com

**Personal Threads Boutique**  
8600 Cass Street  
Omaha, NE 68114  
(402) 391-7733  
www.personalthreads.com

(continued on page 96)

## NEVADA

**Jimmy Beans Wool**  
5000 Smithridge Dr., #A11  
Reno, NV 89502  
(775) 827-YARN  
www.jimmybeanswool.com

## NEW HAMPSHIRE

**The Elegant Ewe**  
75 South Main St, Unit 1  
Concord, NH 03301  
(603) 226-0066  
www.elegantewe.com

## The Fiber Studio

161 Foster Hill Road  
Henniker, NH 03242  
(603) 428-7830  
www.fiberstudio.com

## HodgePodge Yarns & Fibers

59 Belknap Avenue  
Newport, NH 03773  
(603) 863-1470  
www.hdgpdg.wordpress.com

## NEW JERSEY

**The Yarn Attic**  
406 Route 206  
Hillsborough, NJ 08844  
(908) 864-5311  
www.theyarnattic.com

## Pins and Needles

8 Chambers Street  
Princeton, NJ 08542  
(609) 921-9075

## Close Knit

300 Franklin Avenue  
Wyckoff, NJ 07481  
(201) 891-3319  
www.closeknityarns.com

## NEW YORK

**Infinite Yarns**  
34 Hempstead Turnpike,  
Store 3B  
Farmingdale, NY 11735  
(516) 293-0010  
www.infiniteyarns.com

## Annie & Co.

1763 2nd Avenue  
New York, NY 10128  
(212) 289-2944  
www.annieandco.com

## Downtown Yarns

45 Avenue A  
New York, NY 10009  
(212) 995-5991  
www.downtownyarns.com

## The Stitchery

49 East Central Avenue  
Pearl River, NY 10965  
(845) 735-4534

## The Yarn Source

7 Schoen Place  
Pittsford, NY 14534  
(585) 334-5350  
www.theyarnsource.com

## NORTH CAROLINA

**Purl's Yarn Emporium**  
10 Wall Street  
Asheville, NC 28801  
828-253-2750  
www.purlsyarnemporium.com

## Black Mountain Yarn Shop

203-A West State Street  
Black Mountain, NC 28711

(828) 669-7570

blackmountainyarnshop.com

## OHIO

**Hank: A Yarn Boutique**  
2651 Observatory Avenue  
Cincinnati, OH 45208  
(513) 386-9869  
www.hankyarn.com

## Silk Road Textiles, LLC

6106 Hamilton Avenue  
Cincinnati, OH 45224  
(513) 541-3700  
www.silkroadcincinnati.com

## OKLAHOMA

**David's Yarn**  
16526 N. Pennsylvania Ave.  
Edmond, OK 73012  
(405) 562-1839  
www.davidsyarn.com

## The Gourmet Yarn Company

2915 West Britton Road  
Oklahoma City, OK 73120  
(405) 286-3737  
www.gourmetyarnco.com

## Loops

2042 Ullica Square  
Tulsa, OK 74114  
(918) 742-9276  
www.loopsknitting.com

## OREGON

**The Web\*sters, Inc.**  
11 North Main Street  
Ashland, OR 97520  
(800) 482-9801  
www.yarnatwebsters.com

## Oregon Knitting Company

309 NE Baker Street  
McMinnville, OR 97128  
(971) 261-9608  
www.oregonknittingco.com

## Close Knit

2140 NE Alberta Street  
Portland, OR 97211  
(503) 288-4568  
www.closeknitportland.com

## Northwest Wools

3524 SW Troy Street  
Portland, OR 97219  
(503) 244-5024  
www.northwestwools.com

## PENNSYLVANIA

**The Knitter's Edge**  
1601 West Broad Street  
Bethlehem, PA 18018  
(610) 419-9276  
www.theknittersedge.com

## Little Owls Knit Shop

2138 Market Street  
Camp Hill, PA 17011  
(717) 737-6700  
www.littleowlsknitshop.com

## The Yarn Basket

150 Falling Spring Road  
Chambersburg, PA 17202  
(717) 263-3236  
www.yarnbasketpa.com

## Yarn at Olga's

107 East 2nd Street  
Coudersport, PA 16915  
(814) 260-9966  
www.OlgaSnyder.com

## Mountain Knits & Pearls

114 Washington St., Ste 100  
East Stroudsburg, PA 18301  
(570) 424-7770  
www.mtnknitspearls.com

## Stitch Your Art Out

235 East Pine Grove Road  
Pine Grove Mills, PA 16868  
(814) 238-4151  
www.stitchyourartout.com

## Loop

1914 South Street  
Philadelphia, PA 19146  
(215) 893-9939  
www.loopyarn.com

## RHODE ISLAND

**The Mermaid's Purl**  
1 West Main Street  
North Kingstown, RI 02852  
(401) 268-3899  
www.themermaidspurl.com

## Yarnia

285 Main Street, Suite 1  
Woonsocket, RI 02895  
(401) 762-0671  
www.yarnia.net

## TENNESSEE

**Bliss Yarns**  
127 Franklin Road, Ste 140  
Brentwood, TN 37027  
(615) 370-8717  
www.blissyarns.com

## Ewe & Company

407 North Main Street  
Kingston Springs, TN 37082  
(615) 952-0110

## Yarn Haven

464 N. Cedar Bluff Road  
Knoxville, TN 37923  
(865) 694-9900  
www.theyarnhaven.com

## Haus of Yarn

265 White Bridge Pike  
Nashville, TN 37209  
(615) 354-1007  
www.hausofyarn.com

## TEXAS

**Hill Country Weavers**  
1701 S. Congress Avenue  
Austin, TX 78704  
(512) 707-7396  
www.hillcountryweavers.com

## Linnie Darling

www.linniedarling.com

## Nan's Needleworks

The Lakeside Building #205  
100 Bunny Run Lane  
Horseshoe Bay, TX 78657  
(830) 598-4560  
www.NansNeedleworks.com

## Yarnbow

1310 Ranch Road 620 South  
Lakeway, TX 78734  
(512) 666-1310  
www.yarnbow.com

## Yarnorama

130 Gonzales Street  
Paige, TX 78659  
(512) 253-0100  
www.yarnorama.com

## The Social Knitwork

26511 Keith Street

Spring, TX 77373

(281) 630-4144  
www.thesocialknitworkats.com

## iPurl

3335 College Park Drive  
Suite 450  
The Woodlands, TX 77384  
(936) 242-1031  
www.iPurl.us

## VERMONT

**Northeast Fiber Arts Center**  
7531 Williston Road  
Williston, VT 05495  
(802) 288-8081  
www.northeastfiberarts.com

## VIRGINIA

**Fibre Space**  
1219 King Street  
Alexandria, VA 22314  
(703) 664-0344  
www.fibrespace.com

## The Yarn Barn

7151 Horseshoe Drive  
Burke, VA 22015  
(703) 978-2220  
www.theyarnbarnonline.com

## Carolan Farm Wool Shop

7151 Horseshoe Drive  
Chincoteague Island, VA 23336  
(800) 985-7083  
www.carolanfarm.com

## The Yarn Barn

5077 Andersonville Road  
Dillwyn, VA 23936  
(434) 983-1965  
www.yarnbarn.com

## Got Yarn

Richmond, VA 23233  
(804) 303-9345  
www.GotYarn.com

## Yarn Explosion

5227 Airport Road NW  
Roanoke, VA 24012  
(540) 206-2638  
www.yarnexplosion.com

## Uniquities

421-D Church Street NE  
Vienna, VA 22180  
(703) 242-0520  
www.uniquitiesyarnshop.com

## WASHINGTON

**Twisted Fine Yarn & Wool**  
210 East Woodin Avenue  
Chelan, WA 98816  
(509) 888-0285  
twistedyarnandwool.com

## Serial Knitters Yarn Shop

8427 122nd Avenue NE  
Kirkland, WA 98033  
(425) 242-0086  
www.serialknitters.com

## WildFibers

706 South 1st Street  
Mt. Vernon, WA 98273  
(360) 336-5202  
www.wildfibers.net

## The Fiber Gallery

8212 Greenwood Ave North  
Seattle, WA 98103  
(206) 706-4197  
www.fibergallery.com

## Little Knits

3221 California Ave. SW  
Seattle, WA 98116  
(877) 245-8701  
www.littleknits.com

## Pacific Fabrics & Crafts

2230 4th Avenue South  
Seattle, WA 98134  
(206) 628-6237  
www.pacificfabrics.com

## The Weaving Works

4717 Brooklyn Ave. NE  
Seattle, WA 98105  
(206) 524-1221  
www.weavingworks.com

## Paradise Fibers

225 W. Indiana Avenue  
Spokane, WA 99205  
(888) 320-7746  
www.paradisefibers.com

## WISCONSIN

## Needles 'N Pins

W9034 County Road A  
Delavan, WI 53115  
(608) 883-9922  
needlesnpinsyarnshoppe.com

## The Knitting Kook

6858 N Santa Monica Blvd.  
Fox Point, WI 53217  
(414) 540-4080  
www.theknittingkook.com

## Grafton Yarn Store

1300 14th Avenue  
Grafton, WI 53024  
(262) 377-0344  
www.graftonyarnstore.com

## The Wool and Cotton Co.

5626 Broad Street  
Greendale, WI 53129  
(414) 235-4746  
www.woolandcottonco.com

## Spin

108 S. Madison Avenue  
Sturgeon Bay, WI 54235  
(920) 746-7746  
www.spinofdoorcounty.com

## The Sow's Ear

125 South Main Street  
Verona, WI 53593  
(608) 848-2755  
www.knitandsip.com

## INTERNATIONAL

**Love Knitting**  
www.loveknitting.com

## NORO DISTRIBUTORS:

## AUSTRALIA

**Knitting Fever**  
www.knittingfever.com

## CANADA

**Knitting Fever**  
www.knittingfever.com

## GERMANY

**Designer Yarns GmbH**  
www.designeryarns.de

## UNITED KINGDOM

**Designer Yarns**  
www.designeryarns.uk.com

## UNITED STATES

**Knitting Fever**  
www.knittingfever.com