

ISSUE 6

NORC

FREE!
PATTERN
DOWNLOAD
See page 2

KNITTING MAGAZINE

GET CREATIVE WITH COLOR!

RIPPLE EFFECT: CHEVRONS MAKE A SPLASH

- SHORE THING:
BEACH KNITS
- **DARE TO BARE
TOPS & TANKS**
- LUXE BABY BLANKETS

PLUS
ENTRELAC IS EASY
Learn step by step

\$8.99 52>



0 74808 01505 4

U.S. \$8.99
CAN. \$9.99*
*Recommended Price

Display until 9/2/15



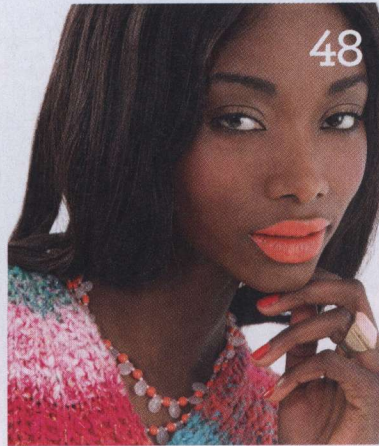
FEATURES

- 6 YARN UPDATE**
Two new yarns and a pencil roving created for hand knitters.
- 10 NEW PRODUCTS**
Tools for the Lunar New Year, quick-to-knit pattern booklets and more.
- 12 THE GRACE OF LACE**
Noro's undulating colorways and airy openwork stitches are a match made in fiber heaven.
- 16 THE MANY FACES OF ANNETTE FITTON**
The designer gives face time to double knitting. By Carol Sulcoski
- 20 SEEING NORO IN A NEW WAY**
Not just for knitting: Noro yarns inform fiber artist Suzanne di Francia's InterLace accessories. By Daryl Brower
- 66 THE YARNS**
What we used.
- 96 STOCKISTS**

FASHION

- 25 A BRAND NEW LIGHT**
These lacy looks are a shore thing.
- 34 ON TREND, IN STYLE**
Scarves, cowls, hats, bags: Hot accessories for spring and beyond.
- 44 DIAMOND HUES: A SPECTRUM REVEALED**
The entrelac technique shines a spotlight on Noro's rainbow hues.
- 48 BACK TO BASICS**
Classic shapes that are all about comfort and color.
- 52 IT'S CHEVRON SEASON**
Summer-ready looks that do the wave with retro flair.
- 64 SUGAR & SPICE**
Heirloom blankets to perk up a nursery.
- 68 PATTERN INSTRUCTIONS**

FREE PATTERN! Visit www.noromagazine.com between June 1 and December 31, 2015, to download a free pattern of your choice from issues 1 through 4 of *Noro Magazine*. Enter coupon code **NORO6FREE** in the shopping cart.





WELCOME TO NORO

It's seems like serendipity:

The top color trends for spring 2015 fit Noro yarns to a tee. Jewel-like pinks, blues, greens and purples exist side by side with warmer yellows, reds and oranges. The pale pastels on the cooler end of the color spectrum mix and match with nature-made neutrals. Fashion is taking its cues from the natural world as well: graceful openwork lace and rippling chevron patterns mimic undulating ocean waves; entrelac designs evoke the shifting light of summer sunsets; textural, tactile accessories are worthy of the earth goddess herself. What's not to love?

spring/summer 2015

NORO

KNITTING MAGAZINE

Editorial Director

TRISHA MALCOLM

Creative Director

JOE VIOR

Executive Editor

CARLA SCOTT

Fashion Editor

KRISTINA MCGOWAN

Managing Editor

LESLIE A. BARBER

Editorial

Associate Editor/Copywriter CHRISTINA BEHNKE

Yarn Editor VANESSA PUTT

Fashion Stylist JOANNA RADOW

Technical Editor LORETTA DACHMAN

Contributing Patterns Editors RENEE LORION,

MARI LYNN PATRICK

Art and Production

Senior Graphic Designer ALICIA MACKIN

Advertising

Advertising Sales JESSICA DENECKE
(516) 492-4475; jessica.dbsales@gmail.com

SoHo Publishing Company

President ART JOINNIDES

Chairman JAY H. STEIN

Publisher DAVID JOINNIDES

Controller ELAINE MOWBRAY

HOW TO REACH US

editorial comments:

e-mail noromag@sohopublishing.com

pattern inquiries:

Corrections are posted at www.noromagazine.com

Manufactured and printed in the United States of America

Vol. 4, No. 1 (June 2015). *Noro Magazine* is published two times a year.

Editorial offices: 161 Sixth Avenue, Suite 1301, New York, NY 10013.

Published by SoHo Publishing Co., LLC, 161 Avenue of the Americas,

Suite 1301, New York, NY 10013.

Copyright © 2015 by Knitting Fever, Inc. (KFI), P.O. Box 336, 315 Bayview Avenue, Amityville, NY 11701. All rights reserved.

No part of this magazine may be copied or reproduced by any means without written permission of the publisher. The foregoing does not apply to limited copies (up to 3) for purely personal, non-commercial, non-distributive uses such as enlargement or marking.

IMPORTANT NOTICE: Single copies \$9.99 in U.S.A.; \$9.99* in Canada.

*Recommended price.

Prestige Yarns

for

NORO

KnitPro

Debbie Bliss

LANA GATTO

Eki Riva

ARAUCANÍA

Ella rae



Prestige yarns Pty Ltd

www.prestigeyarns.com.au


P.O. Box 339, Woonona NSW 2517 Australia

ph 61 (0)2 4285 6669

IMAGIKNIT
San Francisco

Inspiration at
your fingertips.

Visit us online at
www.Imagiknit.com

 WORLDWIDE SHIPPING

Contact:

415-621-6642

info@imagiknit.com



COLOR SPLASH

By Leslie Petrovski

Tokonatsu

Bid *konnichiwa* to the company's baby on the block, Tokonatsu, a soft-as-a-kitten tweedy solid ideal for cardis, shrugs and other warm-weather necessities.

40% cotton/30% silk/30% viscose;
136yds/50g.
Yarn weight: 4

Rich saturated color informs the newest additions to the Noro yarn collection.



Taiyo

Think of Taiyo as the rosé of the Noro family: Lighter and cooler than other varietals but also crisp, with just enough complexity to keep things interesting. Available in 8 dazzling new colorways.

40% cotton/30% silk/15% wool/15% nylon;
220yds/100g.
Yarn weight: 4



Silk Garden Sock Solo

With Silk Garden Sock Solo, you can go all mix-and-matchy with the original by stubbing out solid heels and toes, adding monochromatic stripes or opting for dramatic color-blocks. Choose from 8 sophisticated new colors.

40% wool/25% silk/25% polyamide/10% mohair;
328yds/100g.
Yarn weight: 3



Noro's latest
innovation will
unwind your
expectations.

By Christina Behnke

COLOR WHEEL

Noro is a name synonymous with yarn. Yet the newest member of the family, Rainbow Roll (100g), is about to change all that. Constructed of a single sliver—the roving Noro spins into yarn—this gauzy cloud of soft, spongy 100% wool has been dyed with continuous color shifts. All manipulation ends there—and from there, creativity emerges. Gently knit or crochet it at a bulky gauge. The strand picks up a modicum of twist as it revolves around the roll, adding strength as you stitch. Or augment that twist by spinning it. Before your eyes, the color deepens, the runs extending and shifting ever more seamlessly. Inspired by color, freehand fiber art that's all your own: The sliver is your medium, a felting needle your artist's tool. Or weave it, as shown, to reveal a singular spectrum that shifts in every direction. The choice is yours.

NORO spring/summer 2015

HERD INSTINCT

Whether you honor the ram, sheep or goat of the Chinese zodiac, celebrate this Lunar Year in style. *By Christina Behnke*



1



2



3



4



5

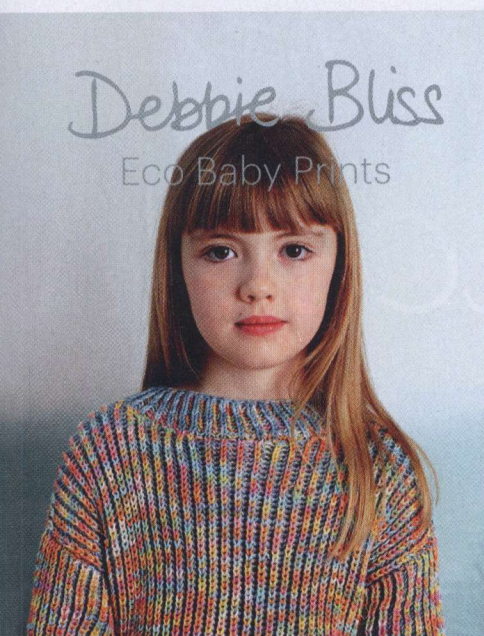


6

1. Oregon illustrator Michael Arciniega captures quiet ovine dignity in Lantern Moon's Portrait Sheep Series blank-inside greeting cards. Set of 5. www.lanternmoon.com
 2. Handcrafted in ceramic by Jennie the Potter, the Elizabeth Zimmermann Signature Necklace from Schoolhouse Press immortalizes a sheep doodled by EZ herself. www.schoolhousepress.com
 3. Ring in the Year of the Ram with GloriaPatre Spin N Knit's Chinese Zodiac stitch markers, in bronze and Czech glass. Set of 5 (top) or 7. www.etsy.com/shop/GloriaPatreSpinNKnit
 4. Inspired by a trip to Peru, JUL Designs' Inca Collection shawl sticks (shown in Mountain Sheep) are hand-cast in white bronze by Fair Trade artisans. www.juldesigns.com
 5. *Hanami II* continues Noro's summery booklet series with draped layering pieces; *Jewels* by Claudia Wersing showcases elegant looks in tweedy Tokonatsu; *Romance* pairs bold Kureopatora with Jenny Watson's detailed basics. www.knittingfever.com
 6. Love + Leche's namesake lotion (top) and goat milk soap bars use a beneficial blend of all-natural calendula, beeswax and oils. Assorted scents available. www.loveandleche.com

PRECIOUS GEMS

Spring yarns from Noro's sister brands make accessories and children's clothes into a little something special.



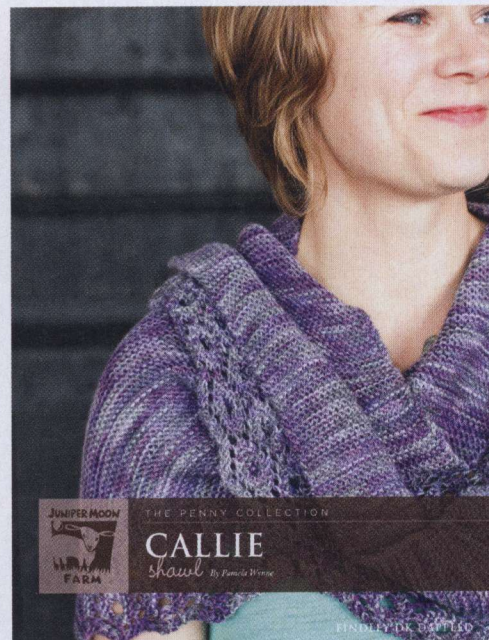
With two new variegated cotton yarns—**Eco Baby Prints** and woventape **Delphi**—**Debbie Bliss** has declared 2015 the summer of color. *The Eco Baby Prints* collection (left) features eleven fun basics for big kids and tiny tots. *Delphi* showcases its namesake (right) in twelve easy-wear layering looks.



Louisa Harding waxes romantic with two new tie-in collections. The *Cassia Children's Collection: Twelve Handknitting Patterns for Children Aged 1 to 5 Years* (left) features vintage-esque designs in soft wool-blend **Cassia**. In **Azalea**, fourteen lacy looks are simply dreamy in this sleek freckled cotton (right).



New to **Ella Rae**'s pattern collection, the Hetty top (left) is a wear-with-anything essential; the space-dyed look of **Lace Merino DK** emblazons any outfit. New **Phoenix DK Prints** puts a splashy spin on the machine-washable mercerized cotton, making designs like the Bunty dress (right) even more kid-friendly.



Designer Pamela Wynne joins **Juniper Moon Farm** to create an elegant spring collection. The exquisite colors of **Findley DK Dappled**—new to the merino/silk Findley family—complement the lacy **Callie** shawl (left). The textured **Easy Springtime** scarf is featherlight in new cotton chainette **Neve** (right).

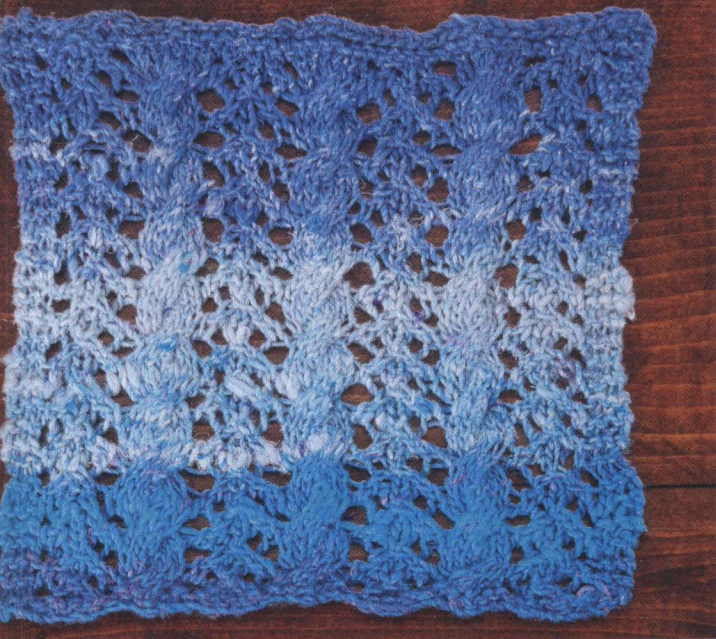


The Grace of Lace

Lace designs, simply by creating a pattern from negative space, can transform yarn into the most intricate

and elegant of fabrics known to the needlearts. Couple this capacity with the coveted shifting colorways in the Noro range of yarns and watch the magic unfold.

The six lace patterns shown on these pages are from Vogue Knitting Stitchionary Volume 5: Lace Knitting (Sixth&Spring Books).



Corkscrews

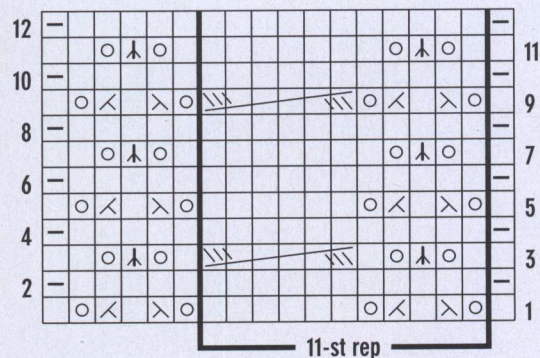
Pattern #142, page 147 (shown above)

Yarn: Noro Taiyo Sock color #S3

Needles: Size 2 (2.75mm)

(multiple of 11 sts plus 7)

6-st RC: Sl 3 st to cn and hold to *back*, k3, k3 from cn.



STITCH KEY

□ K on RS, p on WS

▬ K on WS

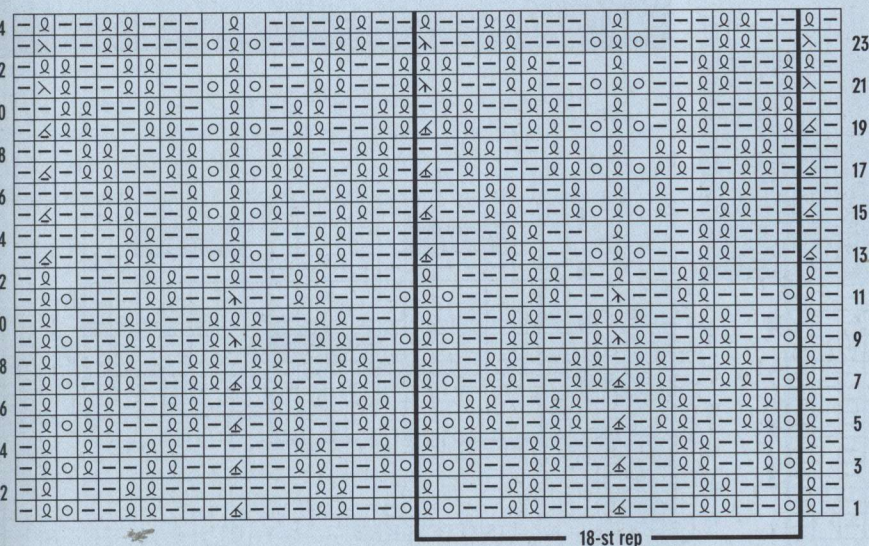
○ Yo

⋈ K2tog

⋈ SKP

⋈ S2KP

⋈ 6-st RC



STITCH KEY

□ K on RS, p on WS

▬ P on RS, k on WS

○ Yo

⋈ K2tog tbl

⋈ P2tog

⋈ K3tog tbl

⋈ P3tog

⋈ K1 tbl on RS, p1 tbl on WS



Flames

Pattern #105, pages 100–101 (shown above)

Yarn: Noro Taiyo Sock color #S3

Needles: Size 2 (2.75mm)

(multiple of 18 sts plus 3)

Sea Foam

Pattern #8, page 14 (shown below)

Yarn: Noro Taiyo Sock color #S3

Needles: Size 2 (2.75mm)
(multiple of 10 sts plus 8)



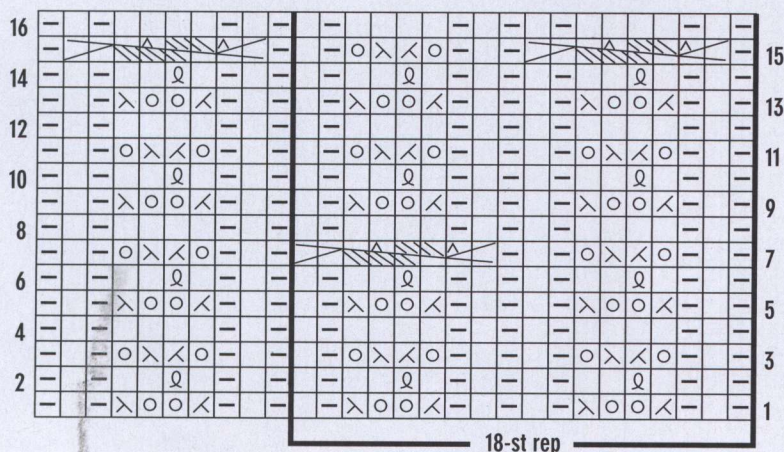
Medallions

Pattern #110, pages 106–107 (shown above)

Yarn: Noro Taiyo Sock color #S3

Needles: Size 2 (2.75mm)
(multiple of 18 sts plus 10)

8-st Cable: Sl 1 st to cn and hold to *front*, sl next 6 sts to 2nd cn and hold to *back*, k1 from LH needle, then [p1, k4, p1] from 2nd cn, then k1 from first cn.



STITCH KEY

□ K on RS, p on WS

▬ P on RS, k on WS

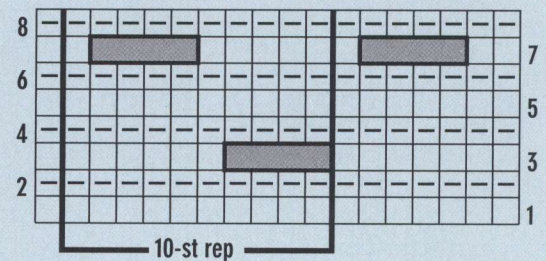
○ Yo

⋈ K2tog

⋈ Ssk

⊗ P1 tbl

⋈ 8-st cable



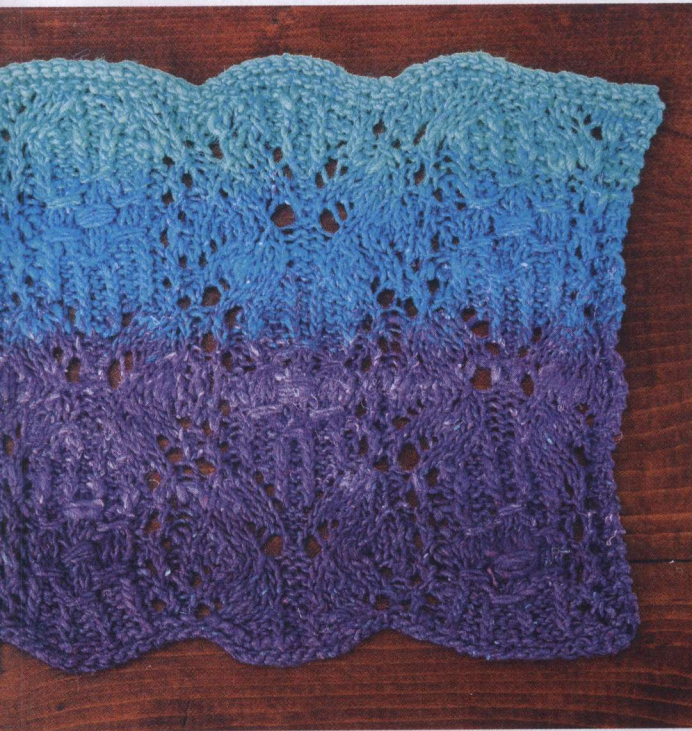
STITCH KEY

□ K on RS

▬ K on WS

▬ [Yo] twice, k1, [yo] 3 times, k1, [yo] 4 time, k1, [yo] 3 times, k1, [yo] twice

Note On WS rows above yarn overs, drop yos off LH needle without working them.



Bubble 'N Squeak

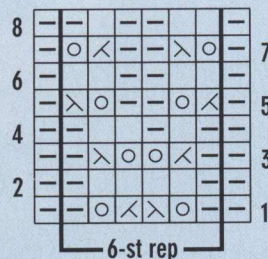
Pattern #26, page 23 (shown left)

Yarn: Noro Taiyo Sock color #S3

Needles: Size 2 (2.75mm)

(multiple of 6 sts plus 2)

STITCH KEY



- K on RS, p on WS
- P on RS, k on WS
- Yo
- K2tog
- Ssk

Butterflies Are Free

Pattern #120, pages 122–123 (shown right)

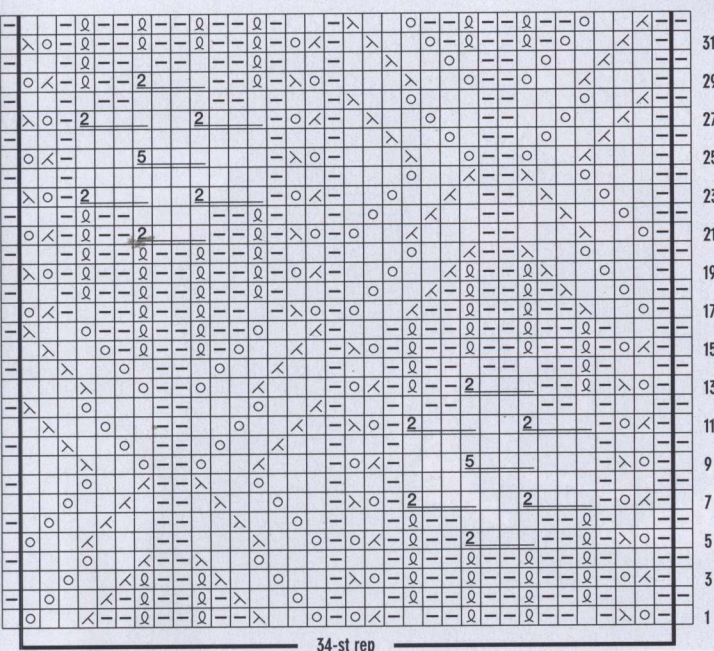
Yarn: Noro Taiyo Sock color #S3

Needles: Size 2 (2.75mm)

(multiple of 34 sts plus 2)

Wrap 4 sts twice: K4, then sl these 4 sts to a cn, wrap yarn around sts counterclockwise twice, then leaving yarn at back, return sts to RH needle.

Wrap 4 sts 5 times: Work as above, wrapping yarn 5 times.



Butterflies Are Free

STITCH KEY

- K on RS, p on WS
- P on RS, k on WS
- Yo
- k2tog on RS, p2tog on WS
- Ssk on RS, ssp on WS
- K1 tbl on RS, p1 tbl on WS

Wrap 4 sts twice

Wrap 4 sts 5 times



The Many Faces of ANNETTE FITTON

By Carol J. Sulcoski

Photographs by Marina Isaksen Sellstad



Melbourne, Australia, textile artist Annette Fitton has many faces: industrial engineer, stay-at-home mom, dollmaker, yarn bomber. She runs a design business called Nini & Wink, creating everything from life-size pigs bedecked in Estonian lace to handsewn corduroy dolls to double-knit scarves awash in color. But the faces for which she is perhaps best known are the knitted visages she creates in beautiful Noro yarns.



Fitton's path to the fiber arts was the result of serendipity as much as anything: She began her career as an industrial designer, graduating from the University of Canberra. In the early 1980s, she worked with American architects to design Canberra's new Parliament House, studied furniture joinery in Sweden, and was an architectural model maker in London before switching her focus to full-time mothering, often volunteering for various schools and community organizations.

Fitton learned how to knit at the early age of 4 (her mother was an avid knitter, spinner, weaver and seamstress) but didn't consider the marketability of her creations until her 17-year-old son, in that charming way teenagers have, suggested that she "get a life." Fitton had received many compliments on her knitting and sewing projects throughout the years and was intrigued by the idea of making soft toys. Envisioning "an up-to-date version of the classic rag doll," as she describes it, Fitton rummaged through her fabric stash, finding an orange corduroy fabric that would make perfect hair; she used other corduroy fabric in various shades for the skin. After her first six dolls sold quickly, Fitton made more: "Dolly needed a little sister, then a baby brother, a cat, hen and more." Fitton still makes soft dolls—"my aim is to make baby-friendly, machine-washable dolls from predominantly recycled corduroy and denim and to make them as simply as possible to keep their cost to a minimum"—but sells them only once a year at a makers' market.

The next step in Fitton's textile career—becoming a yarn bomber—was also fortuitous. A local gallery put out a call for crafters to make knitted and crocheted food to be displayed at an exhibition. "Making a meal for the banquet sounded like it would be fun, so I crocheted three plates of food, cutlery, napkins and a cup of hot chocolate," says Fitton. Through the connections she made at the gallery, Fitton joined a yarn-bombing group, creating large and small displays for public and private installations—tree cozies, playground equipment and street signs, even a yarn-bombed toilet and sink for the Royal Melbourne Show. Fitton's yarn bombing brought her to the attention of *Vogue Knitting*, who asked her to display examples of her work at the VK LIVE event in New York City in January. She calls it "the highlight of my yarn-bombing experience to date." And it is through her yarn bombing that Fitton's fascination with faces resurfaced.

Meanwhile, she had continued to knit for herself, her family and her friends. Her interest in wearable art was first piqued in the early 1980s, when she bought a sweater kit created by Australian designer Jenny Kee. "I taught myself how to knit intarsia," Fitton explains, "and designed and knit several cardigans with detailed intarsia pictures on their backs. The cardigans I knit for my young family were experiments with color in the form of stripes and texture." Fitton wanted to develop a style of knitting that didn't have an obvious right or wrong side; ironically, contacts she made while

(continued on page 18)

The Many Faces of ANNETTE FITTON

creating street art—items that adorn inanimate objects—led her to consider how knitting and crochet could be integrated into pieces of art that people could wear. Fitton's friend Loani Prior, the "Queen of Tea Cozies," introduced her to double knitting, a technique in which two fabrics are knitted simultaneously so that the work has no wrong side.

Fitton was fascinated: "Double knitting produces fabric with two good sides, fabric twice the thickness of regular knitting, and is perfect for scarves and blankets." When Fitton began creating her own double-knit designs, it seemed only natural to once again incorporate faces, which she used time and again in her yarn-bombing creations. "Faces



color and drape. Fitton agrees: "To be wearable, fibers should be light, washable and comfortable on the skin." Noro yarns, with their natural fibers, tactile textures and morphing colors, fit the bill perfectly. Says Fitton, "I really like the philosophy behind the production of Noro yarn and seeing, on the Internet, how the factory operates. Knitting with Noro is a delightful experience, especially the

way the beautiful colors unexpectedly appear on the needles. The finished product, with its strength and variety of graduating colors, is magic."

What's next for this talented Aussie? This spring Fitton is collaborating with five other textile artists to create a yarn-bombing project for a gallery in Prahran, Melbourne; she's using Australian-grown alpaca to create a



have a universal attraction," she says. "I want my knitting to have the same cheeky sense of fun my dolls have."

Fitton discovered the joys of working with Noro yarn around the time she began experimenting with double knitting. "Yarn bombers generally rely on cheap, colorful acrylic yarn to look good and survive for a month or so stretched tightly around a column, tree or pole, just as street artists like using acrylic paint rather than oil pastels. I had admired Noro yarns only from a distance until Loani [Prior] urged me to knit with them." Prior extolled the benefits of using high-quality yarn in one's work, given its superior texture,

three-dimensional piece for a summer show at the Royal Melbourne; and she's challenged herself to create one doll per day in November to be ready for the annual makers' market she attends. Of course, Fitton plans to further indulge her fascination with double knitting: "My adventure continues with the design and production of prototypes aimed at inspiring other knitters to rise to the challenge of double-knitting scarves, wraps and blankets, using the best quality yarns available."

Look for a "face" pattern designed by Annette Fitton in an upcoming issue of *Noro Magazine*.

NORO spring/summer 2015

SUZANNE DI FRANCIA

Seeing
Noro

in a
New
Way

By Daryl Brower

In the hands of Alaska-based textile artist Suzanne di Francia, scraps of silk, lace and Noro yarns are transformed into one-of-a-kind works of wearable art.

*Dancing Yoyo's
infinity scarf*



*Spirals and Loop-d-
Loops scarf*

*Triangle Motifs
headband*

*For more on
Suzanne di Francia,
turn to page 22.*

PHOTOGRAPH BY JACK DEUTSCH

SUZANNE DI FRANCIA

Seeing Noro in a New Way

From the knitting and macramé she explored as a child to the painting and pottery she did in her 20s, making things has always been at the center of fiber artist Suzanne di Francia's universe. It runs in the family. Her mother taught her to knit at a young age, and a trip to Italy when she just 9 years old opened her eyes to the "beautiful way Italians create life," something that inspires her to this day.

"My Aunt Franca, who lives on the Isle of Capri, designed and made couture clothing for French haute houses," di Francia explains, "and my mother's knitwear designs were an inspiration to me from early childhood." No creative slouch herself, di Francia was sewing her own clothes in sixth grade; by the time she was 15, she had a business designing and selling custom T-shirts. Explorations in paint and clay followed. "I tried all sorts of mediums," she says. Marketing jobs paid the bills until 1987, when she settled down in San Francisco and began designing a bridal accessories line. She soon had a long list of clients, including an up-and-coming lingerie chain called Victoria's Secret. She spent the next fourteen years designing a private-label line for the chain, first working on her tabletop sewing machine and gradually expanding to a full-on manufacturing business. "It was an amazing experience," di Francia says.

The work for Victoria's Secret was lucrative but stressful. As the years rolled along, it became difficult to compete with offshore suppliers, and di Francia found herself "working harder for less." And it wasn't just a shrinking profit margin that was causing the stress. "I felt as though I was losing touch with the process," she says. "When you are mass-producing something, the natural flow of creativity becomes less flexible."

Recognizing that she was close to creative burnout, di Francia did what she calls a "complete 180" and turned her attention back to smaller accounts, smaller collections and private clients. "It was freeing," she says. "I was back to getting to know my customers and creating on a more intimate level."

She also started playing with new techniques that incorporated the scraps of lace and silk that ended up on the production floor when she was turning out her line for Victoria's Secret. "I couldn't throw anything away," she says. So she started dyeing the pieces and turning them into collages, using them to create wearable ornaments.

Taken with felting, she went to the School of Hatmaking in Zurich, learning the old-world techniques of hand-blocking felt hats.

She returned to Alaska, her home since 1989—she'd accompanied a friend on a back-country ski trip and by the end of the weekend had signed a lease on an apartment in Anchorage—and began designing exquisite millinery pieces, trimming them with handmade silk tulle flowers. She sold the pieces at artisan markets and craft fairs throughout the state, reveling in the opportunity to once again explore different art mediums and techniques. The small market there meant she had to constantly develop new pieces and diversify her collections. Gloves, brooches, scarves and hair accessories were added to the mix, and

di Francia soon found herself experimenting with embroidery, hand weaving, beading and different fibers. It all evolved organically. "I just found my creative flow," she says. "And it kept growing."

In 2012 di Francia was surfing the web in search of fibers for her dyeing experiments when she came across the Noro yarn collection. "I immediately felt an affinity with it," she says. "The colors were just so incredible. So I ordered a few skeins." When they arrived, di Francia was overwhelmed. "I got this instinctive energy flow from the yarn," she says. "It was like falling in love." She spent several days just looking at the yarn, afraid to touch it. "I kept thinking, 'It's just so nice. What if I ruin it?' I finally gave myself permission to 'destroy' just one skein."

She didn't ruin it. Instead she came up with a novel way to use the fibers. Di Francia doesn't knit with Noro. Instead, she creates gorgeous fabrics with it using a technique she calls InterLace. She lays the yarns out on self-adhesive, water-soluble stabilizer. She then interweaves yarn strands under and over each other, creating intricate patterns. The yarns are stitched in place and the stabilizer is washed away.

The results are stunning. "Once I started, I couldn't stop," she says. "The colors, the textures all just came together." She found that people were fascinated with the way the pieces were made. "They wanted to know about the process," she says. "And I thought, Why not share it?"

Di Francia spent the better part of a year fine-tuning her technique and translating it into kits that allow others to give the InterLace technique a try. The kits—Style I-151: Spirals & Loop-loops (scarf), in ten Silk Garden colorways; I-153: Triangle Motifs and I-159 Color Fusion Motifs (headbands), in eight Janome and twelve Silk Garden Lite colorways, respectively; and I-155 Dancing Yoyo's (infinity scarf), in twelve Silk Garden Lite colorways—which are hitting the market as this issue goes to press, include Noro yarns, stabilizer and a template that provides a starting point for the fiber design. "They're not paint-by-numbers kits," di Francia explains. "They're a creative starting point for something that will become a one-of-a-kind wearable work of art."

She points out that the process of creating is as rewarding as the finished product itself. Working with the yarns is like color therapy, she says: "The way in which the fibers are spun to blend the colors together is over-the-top amazing." Di Francia hopes that her kits—she plans to introduce one new design per month—will inspire others to tap into their own creative energy. "There's just something so wonderful and exciting when creativity flows naturally," she says. "There's so much benefit in that energy. And I want to help nurture it."

Learn more about the artist and the kits at www.diFranciaFiberArt.com; you can also find her on Facebook at [diFranciaFiberArt](https://www.facebook.com/diFranciaFiberArt). The InterLace Yarn Kit Designs are currently available for purchase at www.etsy.com/shop/diFranciaFiberArt.



SPRING / SUMMER 2015

A Brand New Light



*Escape to
a place
where the
sun's rays
reveal a
fresh and
beautiful
spectrum.
Escape to
Noro.*

Inspired by the breathtaking beauty of nature, Noro color looks right at home on a beach holiday. Savor the ocean breezes in these lacy looks.

Seaside





TABETHA HEDRICK

When the sun's rays blaze, pull Hedrick's lacy crop top over your sundress or bathing suit. Pleating at the set-in sleeve caps and overall pinecone-lace patterning provide embellishment without overshadowing the jubilant carnival colors of Taiyo Sport colorway #6. A petite ruffle worked at the buttoned back placket forms a charming counterpoint to the naturally scalloped edges.

1

VALENTINA DEVINE

Worked in two pieces from sleeve to sleeve, Devine's lace tee expands Noro's horizons by rendering Taiyo Sock colorway #S8 in flattering vertical stripes. The gauzy lace pattern, which drapes languidly to create a smooth line at the drop shoulders, is worked from a one-row repeat. A narrow I-cord drawstring, evenly threaded through yarn-over spaces, cinches the waist.

2

3

DORA OHRENSTEIN
Ohrenstein's crocheted openwork top takes you everywhere in style: Wear it off the shoulder for a breezy boho-chic look, or pull up the ballet neckline to create a trim, pretty silhouette. It's worked in the round from the top down. Double-crochet clusters and fan stitches isolate the iris, apricot and periwinkle shades of Noro Taiyo Sock colorway #S48 in a crisp, graphic way.

Sea Change

CATHY CARRON
Charming and cool, Carron's drop-stitch yoke top is knit in the round from the top down. Worked among the drop-stitch bands, garter ridges lend texture while echoing the borders at the sleeves and hem. Fully fashioned shaping creates a close fit throughout the stockinette body. It's knit in Noro Tokonatsu colorway #6, a soft tweedy shade of oceanic blue.

4

ONNIE FRANZ

With multiple ways to wear thanks to its generous 58-inch circumference, Franz's lace cowl keeps breezes at bay well past sunset. Knit in the round using Noro Shibou's cotton, wool and silk blend, it's soft and light against your shoulders. The wavy lace pattern highlights the mottled jade, orange and violet hues of colorway #5. Garter-stitch borders smooth the edges.



MARI LYNN PATRICK
Replete with netlike double yarn overs and worked in Noro Taiyo, Patrick's lace-pattern top can be knit in time for a last-minute getaway. Whether you layer it over a cami or a bikini top, the ribbed U neckline and cap sleeves lend it a charming rustic air just right for touring seaside villages. Yellow, amber, orchid and viridian colorway #25 recalls an aquatic sunset.

6

MARI LYNN PATRICK

Composed of lacy crochet circles, Patrick's afghan evokes a seascape of sand dollars, sun, seagrass and tide pools in Noro Taiyo Sport colorway #10. Half-circle motifs smooth the top and bottom edges. The pieces are crocheted separately and joined together in finishing, making this an ideal project to tote in your beach bag. Two rounds of crochet border the outer edge.

7



NORO Accessories

On
In Trend,
Style!



We're sharing the
top trends for
Spring 2015 in an
accessories
collection that's
so now. Styles
come and go,
but Noro is
perennially
beautiful.

8

HALLEH TEHRANIFAR

This season, even the most ladylike looks have a bit of flower-child flounce. Tehranifar's fluted scarf is worked in two halves, starting with the eyelet-and-rib end panels. Stitches for the broken-rib body are picked up and knit from the smooth side edges and then joined at the scarf center. I-cord trims the sides. It's knit in the vivid sorbet shades of Noro Taiyo colorway #28.

Early



9

ANN KLIMPERT

Embrace your inner earth goddess with Klimpert's striking shawl, which is knit in one piece in Noro Silk Garden Lite colorway #2083. The muted coral, peach, olive and evergreen tones harmonize nicely with the contrasting textures that subtly punctuate the shawl's length. Lace ladder-and-twist stitch forms the center; bands of garter stitch and k3, p3 rib border either end.



On Trend,
In Style!

Romantic

10

VANESSA PUTT

This page: Clean and simple yet unabashedly feminine, eyelet lace at the lower edge of Putt's shawl complement the sensual palette of hot pink, purple, scarlet and gray throughout Noro Silk Garden Lite colorway #2093. Constructed using decreases and short rows—and knit at a looser-than-usual gauge for added drape—the crescent shape lends itself to a variety of styling options.

HOLLI YEOH

Opposite: Summer's essence comes to life in Yeoh's scarf, knit in Noro's soft, silken tweed Kibou. The allover diagonal eyelet pattern creates a subtle wave effect, while at the same time, garter ridges appear to segment the expressionistic lavender, lime and chartreuse shades of colorway #11. Double yarn overs perforate the wide garter-stitch border at either side.



11

On Trend, *In Style!*

CATHY CARRON

Enjoy the zen of knitting Carron's tote: Dimples and swirls—rendered in cable and spiral rib patterning using the sandy shades of Noro Silk Garden Sock colorway #S269—evoke a calming rock garden. It's worked up from the base, with an inverse cabling pattern forming a ruched shape at the top. The ribbed shoulder straps extend from the body and are joined at the center with a three-needle bind-off.

12

MARI LYNN PATRICK
the beauty of simplicity:
rick's cowl is worked
one long rectangle,
beginning and ending
h a band of twisted rib
ch. Twisting the work
ore sewing the ends
ether forms a Möbius,
ich flaunts the distinct
ys that the copper,
l and rose tones of
ro Taiyo colorway #25
late and blend on the
nt versus the wrong
e.

13

Minimalist



On Trend,
In Style!



14

MARI LYNN PATRICK
Taiyo Sport, in colorway #11's shades of rust with hints of magenta and powder blue, creates a lightweight lacy tam just right for transitioning temperatures. Purl ridges throughout the simple eyelet pattern echo the narrow garter-stitch edge. It's knit in the round, with decreases forming a square motif at the crown.



15



MARI LYNN PATRICK
Hippie chic goes haute
in Patrick's skullcap. It's
knit in multiple direc-
tions using the high-
contrast charcoal, white,
aqua and citrine shades
of Noro Taiyo Sport color-
way #1. The horizontally
knit brim is worked first
in a wavy lace pattern
and joined. Stitches for
the mesh-patterned
crown are picked up and
knit in the round from
one edge; decreases
shape the crown.



NORO Entrelac

16

Diamond Hues

A Spectrum Revealed

Designer Rosemary Drysdale demonstrates how no technique puts Noro's rainbow on display quite like entrelac knitting.

Opposite: Drysdale's pillow covers are sure to light up any room. The rapid shifts in Noro Silk Garden Lite's colorways—shown in gold, emerald, azure and pink #2082 (left) and royal, periwinkle and green #2092—create a kaleidoscopic effect from the simplest of entrelac patterns. The back panels are worked in stockinette.

This page: For her scarf, Drysdale returns to basic stockinette entrelac stitch, adding minimal detail: panels worked in ridge stitch embellish the center-most column of diamonds. Worked in this technique, the navy, green, aquamarine and lavender shades of Noro Shiraito colorway #30 develop a watercolor-esque aspect.

PHOTOGRAPHS BY JACK
DEUTSCH. HAIR AND MAKEUP
STYLED BY ELENA LYAKIR

17

An entrelac panel, worked in embossed leaf stitch, is the center-piece of Drysdale's poncho; like the turtle-neck, it's knit in Noro Silk Garden Sock's purple, green and blue colorway #S354. The olive-shaded back and outer front panels are knit separately in Silk Garden Solo colorway #4. The ribbed borders are worked after the pieces have been seamed.

18

Entrelac How-Tos

New to entrelac? We demystify the technique by showing you a few of the steps from each piece of the puzzle.

1



After working all of the *base triangles* (shown here are three sets of 8-stitch triangles), the triangles will look like the photo above. The shapes appear to be wrong, with the points curled up, but they will even out as you continue the next few steps.

2



Next is the *right-hand corner triangle*. Increase 1 stitch at the beginning of the row, then decrease 1 st using ssk as follows: Slip 2 sts knitwise, one at a time, to right-hand needle, insert left-hand needle into fronts of these two slipped stitches and knit them together as shown.

3



Picking up sts for the *RS rectangle* comes next. Using needle with 8 sts from the previous RH corner triangle, insert needle from front to back into edge st of next base triangle, as shown. Wrap the yarn around the needle and pull it through to make a knit stitch.

4



Decrease stitches on the *LH corner triangle* by working p2tog at the beginning of every wrong-side row as follows: Insert the RH needle purlwise into the first 2 stitches, as shown, wrap the yarn around the needle and purl them together to decrease 1 stitch.

5



The *WS rectangles* are the next to be worked. Pick up and purl sts along the previous LH corner triangle as follows: Insert the RH needle from back to front into edge st of the previous triangle. Wrap the yarn around the needle and pull it through to make a purl stitch.

6



Continuing with the *WS rectangle*, on the wrong-side rows, you are always purling the last stitch of picked-up stitches together with the next st on the LH needle, until all the stitches from the previous RS rectangle have been used up.

7



Continue to repeat the four main sections as follows: RH corner triangle, RS rectangles, LH corner triangle, WS rectangles, for the desired length, always ending with a LH corner triangle, as shown. Finish off with the end triangles.

8



If you find picking up and purling stitches with the needle awkward, here is an alternate method using a crochet hook. Choose a hook that's close to the size of the knitting needle used for the project. Insert the hook back to front into the edge stitch, as shown.

9



Wrap the yarn around the hook, draw up a loop and place this loop on the needle, as shown.

MARGEAU SOBOTI

Proportion is key to the sultry yet sweet attitude of Soboti's cropped tank. It fits snugly at the torso thanks to the deep ribbed hem; a band of eyelet rosettes placed just below the bust creates a curvy silhouette. The deep square neckline is mirrored at the back. Narrow ribbed trims are picked up and knit from the neck and armholes. Tweedy Noro Tokonatsu, in solid orange colorway #16, mellows the look.

19

Back to Basics

Now is the time to strip away extraneous elements. Form, comfort and color are all that remain—and this summer, they're all you need.

PHOTOGRAPHS BY JACK DEUTSCH. HAIR AND MAKEUP STYLED BY ELENA LYAKIR

20



KAREN KING

Go California casual in King's lace-up shell. The notched cross-tie neckline—created by lacing a skinny leather cord through eyelets worked into the neck trim—is a fitting bohemian accent to the warm mélange of tan, jonquil and coral pink in Noro Kibou colorway #1. Worked in stockinette stitch with fully fashioned side shaping, it boasts a smooth and flattering fit. K2, p2 ribbing borders the edges.

21

**COURTNEY
CEDARHOLM**

High-texture fisherman's rib makes a fine pairing for rustic Noro Taiyo, in bright pink and green colorway #60; Cedarholm uses the stitch throughout her crossover vest to graphic effect. It's knit from the top down in pieces, with increases shaping the layered neckline, and worked in the round from the underarm. Wear it now over cutoffs or floaty skirts; take it into fall with crisp collared shirts and slim pants.



22

LISA ROBERTS

Clever construction forms Roberts's racer-back top: After the I-cord neck straps have been joined, the separate back strap is folded over the seam and sewn in place. The deep band of ribbing at the lower edge—which streamlines the close, cropped silhouette—flows into the cable-and-rib pattern at the bodice. With its purple, gray and yellow palette, Taiyo Sock colorway #S30 complements the sporty look.

Signature NORO

It's Chevron Season

*A sun-dappled pool,
a glimmering lake,
a breaking wave...*

*Summer is most
refreshing wherever
there's a little ripple.*

*Come on in: The
color's fine!*

23

MARJORIE MITCHELL

Soft stripes in cooling tones of violet, blue, ice and wine cascade down into gently waving feather-and-fan stitch at the lower portion of Mitchell's sleeveless top. The shallow V neck complements the serene patterning. Knit in Noro Taiyo Sock colorway #S3, it's worked in the round to the armholes. Short-row shaping at the shoulders ensures a smooth fit.

*As gentle breezes
temper the air, so
do certain patterns
form the subtlest
of chevrons.*



SAHRA JADE KNOTT
just a suggestion of
chevron patterning—
eyelet chevron panels
at the lower edges—
all the embellishment
Knott's classic round-
neck pullover needs.
The stockinette bodice
and upper set-in sleeves
spotlight the yarn's
dramatic orchid, blue,
awn and charcoal
tones; knit in Noro Taiyo
Sport colorway #9,
it's an ideal weight for
three-season wear.



24

Chevron Season

LORNA MISER

With its relaxed shape and sultry neckline, Miser's vest pairs equally well with sundresses and capris. Knit in a lacy chevron pattern with periodic garter rows, the lower section is worked in one piece, the jade, peach and lime shades of Taiyo Sport colorway #3 forming a vibrant array of narrow stripes. Separating the work for the yoke creates placid colorblocks.

25





**JACQUELINE
VAN DILLEN**

Replete with retro flair, van Dillen's pullover is deceptively simple to knit. Minimal feather-and-fan patterning produces the wavy stripes, which look crisp and graphic in a trio of solid Noro Tokonatsu colors—tweedy beige #101, bright teal #8 and navy #5. Shallow armholes lend a trim fit to the drop shoulders. Ribbed three-quarter sleeves finish the casual look.

26

27

TALITHA KUOMI
Light and lacy yet elegantly plush, Kuomi's fringed scarf is evening-appropriate in the amethyst, emerald and sapphire tones of Noro Silk Garden Sock colorway #S8. The zigzag eyelet pattern used throughout creates a chevron effect without disturbing the color sequence, which works up in narrow stripes thanks to the double-sided tubular construction.



LORI STEINBERG
Opposite: Knit side to side, Steinberg's ridged chevron mitts add a charming touch to any outfit—and adapt to any style in a variety of Noro Silk Garden Sock colorways. Shown here, clockwise from top right: camel, beige and ochre #S359; ultramarine, indigo and mint #S373; and turquoise, magenta, orange and ebony #S211. Single crochet neatly trims the edges.

Chevron Season

29

CRISTINA MERSHON
This page: Even your simplest summer outfits will pack a punch when you top them off with Mershon's crocheted cowl. For added texture, the single-crochet chevron pattern is worked into the back loop. Saturated colors—compliments of cobalt, stone and umber Noro Kureopatora colorway #15, with salmon accents in Tokonatsu #17—lend a sporty vintage vibe.

Undulating textures meet
fluctuating colors,
creating decidedly dynamic
accessories.



30

Chevron Season

LORI STEINBERG

Steinberg's welted chevron cowl integrates the bold tropical colors of Noro Kibou colorway #8 directly into its design. The turquoise-shaded sections, including those placed at either edge, are knit in reverse stockinette. The accompanying coral- and sand-shaded sections are worked in a simple chevron pattern, which gives the cowl its gently serrated shape.



A photograph of a baby's bed. A large, colorful crocheted blanket with wavy stripes of pink, yellow, and green is draped over the bed. A stuffed bunny with pink ears and a pink bow is sitting on the left side of the blanket, holding a small, ornate gift box. The bed has a dark metal headboard and a patterned pillow. The background wall is covered in floral wallpaper.

NORO Baby Sugar & Spice *...and Everything Nice!*

31

ANABELLE SPEER

opposite: Dainty traveling lace traverses Speer's baby blanket, lending an undulating quality to the chocolate, rose and lemon shades of colorway #18. The top and bottom moss-stitch borders are knit into the body of the blanket, while the side borders are picked up and knit in moss stitch.

this page: Little hands will love the delightful textures of Speer's rhoghorn-cable and basket-rib-stitch baby blanket. Worked with ribbed borders at the top and bottom, the main body is knit in one piece using cinnamon, lime and turquoise colorway #26. The ribbed side borders are picked up and knit.

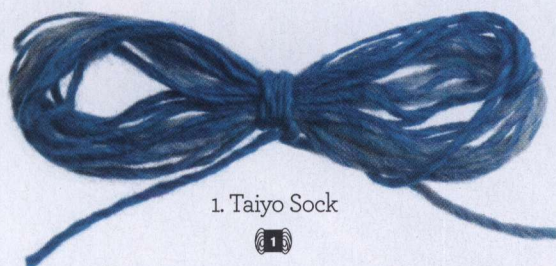
PHOTOGRAPHS BY JACK
UTSCH



Welcome baby with a warm embrace of
jubilant color—and create an heirloom with
the soft cashmere touch of Noro Shiraïto.

The YARNS

Shown here are yarns used in this issue. Included is relevant information regarding these yarns, along with an explanation of the meaning of many of the yarn names.



1. Taiyo Sock



4. Taiyo Sport



2. Shiraito



5. Kibou



3. Silk Garden Sock



6. Silk Garden Lite





7. Kureopatora



8. Silk Garden Solo



9. Taiyo



10. Tokonatsu



1. Taiyo Sock, 3.5oz/100g; 462yds/422m. Taiyo's little sister ups the cotton, nylon and wool content (50% cotton, 17% wool, 17% nylon, 16% silk) for a fabric that breathes and wicks moisture away.

2. Shiraito, 1.75oz/50g; 198yds/181m. Named for the protected Shiraito Falls near Mount Fuji, this sumptuous 45% cashmere, 45% angora, 10% wool blend is spun into a widely varied thick-and-thin weight that undulates like falling water.

3. Silk Garden Sock, 3.5oz/100g; 328yds/300m. The fast-stripping colorways of Silk Garden's littlest sister add depth to lace and fine-weight garments. A generous strand of nylon strengthens socks. 40% wool, 25% silk, 25% nylon, 10% mohair.

4. Taiyo Sport, 3.5oz/100g; 352yds/320m. The newest addition to the Taiyo family boasts a fiber content as durable as its siblings', with bright, cheerful colors that reflect the rest of the Taiyo line. 60% cotton, 15% silk, 15% wool, 10% nylon.

5. Kibou, 3.5oz/100g; 297yds/271m. Loosely translated, Kibou means "filled with hope"—a lovely sentiment for this cool-to-the-touch single that gleams in the sunlight and knits up into soft, blended stripes. 54% cotton, 34% wool, 12% silk.

6. Silk Garden Lite, 1.75oz/50g; 137yds/125m. Lending seasonal versatility to Noro's classic silk blend, this DK weight (which has the same 45% silk, 45% kid mohair and 10% lamb's wool content as Silk Garden) shines in an array of vibrant jewel tones.

7. Kureopatora, 3.5oz/100g; 295yds/270m. Japanese for "Cleopatra," this lofty 100% wool yarn, with its bright, lively colorways, has a presence as striking and unforgettable as its namesake.

8. Silk Garden Solo, 1.75oz/50g; 110yds/101m. Silk Garden's solid cousin features the same fiber content—45% silk, 45% mohair, 10% wool—in jewel and neutral tones, some flecked with tiny bursts of color.

9. Taiyo, 3.5oz/100g; 220yds/201m. Named for the sun, Taiyo can also refer to a cheery personality; its name reflects the line's super-bright colorways. Cotton (40%) is spun with 30% silk, 15% wool and 15% nylon for strength.

10. Tokonatsu, 1.75oz/50g; 136yds/124m. Rustic yet kitten-soft, this tweedy worsted-weight single-ply comes in solid tones shot through with subtle hints of contrasting color. 40% cotton, 30% silk, 30% viscose.

1 Lacy Crop Top



Sized for Small (Medium, Large, X-Large) and shown in size Small on page 27.

● ● ● ○ INTERMEDIATE

Finished Measurements

- Bust 34 (37, 40, 42½)"/86.5 (94, 101.5, 108)cm
- Length 13 (13½, 14, 14½)"/33 (34.5, 35.5, 37)cm
- Upper arm 11 (12½, 12½, 14)"/28 (31.5, 31.5, 35.5)cm

Materials

- 2 (3, 3, 3) skeins of Noro/KFI *Taiyo Sport* in #6
- One pair size 5 (3.75mm) needles, OR SIZE TO OBTAIN GAUGE
- Eight ½"/13mm shank buttons

Gauge

22 sts and 32 rows = 4"/10cm over chart pat, after blocking, using size 5 (3.75mm) needles.
TAKE TIME TO CHECK GAUGE.

Notes

- 1) When working chart pat, work row 1 once, then cont to rep rows 2–17 for pat.
- 2) When decreasing into chart pat, only work a decrease if there is a corresponding yarn over, and vice versa. Otherwise, work sts in St st.

Back

Cast on 93 (101, 109, 117) sts.

Row 1 (WS) Work chart pat to rep line, work 8-st rep 10 (11, 12, 13) times, work to end of chart. Cont to work chart in this way until piece measures

5½"/14cm from beg, end with a WS row.

Shape armhole

Bind off 4 (4, 4, 6) sts at beg of next 2 rows.

Dec row (RS) K1, ssk, work in pat as established to last 3 sts, k2tog, k1—2 sts dec'd.

Rep dec row every other row 3 (4, 5, 5) times more—77 (83, 89, 93) sts. Work even, if necessary, until armhole measures 1½ (2, 2½, 3)"/4 (5, 6.5, 7.5)cm, end with a WS row.

Divide for back opening

Next row (RS) Work 35 (38, 41, 43) sts in pat, turn, leaving rem sts on hold. Cont on right back sts only as foll:

Next row (WS) Cast on 4 sts for buttonband, k1 (garter st selvage st), p3 (St st button band sts), work in pat to end.

Next row Work in pat to last 4 sts, k4.

Work even in pats as established until armhole measures 7 (7½, 8, 8½)"/18 (19, 20.5, 21.5)cm, end with a WS row.

Right shoulder and neck shaping

Row 1 (RS) Bind off 5 (6, 7, 7) sts, work to end.

Row 2 (WS) Bind off 10 (10, 11, 11) sts, work to end.

Row 3 Bind off 6 (7, 7, 8) sts, work to end.

Row 4 Bind off 6 (6, 7, 7) sts, work to end.

Bind off rem 12 (13, 13, 14) sts.

Left back

Join yarn to 42 (45, 48, 50) sts on hold for left back ready to work a RS row.

Row 1 (buttonhole RS) K1, k2tog, yo, work to end.

Rows 2, 4, and 8 (WS) Work to last st, k1.

Rows 3, 5, 7 and 9 K3, work to end.

Row 6 (buttonhole WS) Work to last 3 sts, yo, p2tog, k1.

Row 10 Work to last st, k1.

Rep rows 1–10 three times more, then work even in pats until armhole measures 7 (7½, 8, 8½)"/18 (19, 20.5, 21.5)cm, end with a WS row.

Left shoulder and neck shaping

Row 1 (RS) Bind off 10 (10, 11, 11) sts, work to end.

Row 2 (WS) Bind off 5 (6, 7, 7) sts, work to end.

Row 3 Bind off 8 sts, work to end.

Row 4 Bind off 6 (7, 7, 8) sts, work to end.

Row 5 Bind off 7 (7, 8, 8) sts, work to end.

Bind off rem 6 (7, 7, 8) sts.

Front

Work as for back to armhole. Work armhole shaping as for back—77 (83, 89, 93) sts. Work even until armhole measures 6¾ (7¼, 7¾, 8¼)"/17 (18.5, 19.5, 21)cm, end with a WS row.

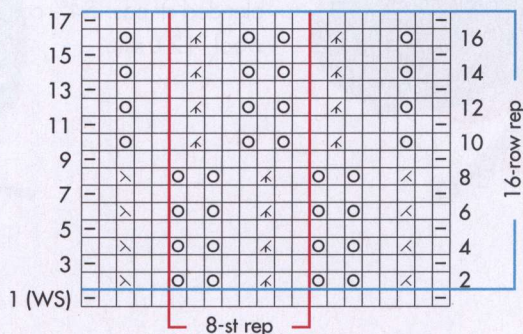
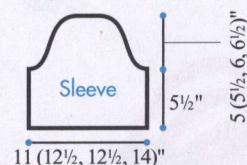
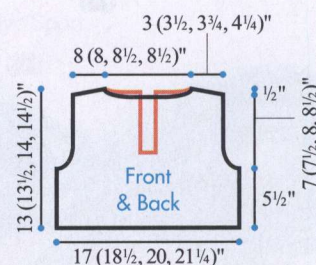
Neck and shoulder shaping

Next row (RS) Work 27 (30, 31, 33) sts in pat, join 2nd ball of yarn and bind off center 23 (23, 27, 27) sts, work to end. Work 1 WS row.

Bind off 5 (6, 7, 7) sts from each shoulder edge once, then 6 (7, 7, 8) sts twice, AT THE SAME TIME, bind off 3 sts at each neck edge twice, then 4 sts once.

Sleeves

Cast on 61 (69, 69, 77) sts.



Stitch Key

- k on RS, p on WS
- ▢ p on RS, k on WS
- ⊙ yo
- ⊗ k2tog
- ⊘ ssk
- ⊕ k3tog

Row 1 (WS) Work chart pat to rep line, work 8-st rep 6 (7, 7 8) times, work to end of chart. Cont to work chart in this way until piece measures 5½"/14cm from beg, end with a WS row.

Shape cap

Bind off 4 (4, 4, 6) sts at beg of next 2 rows—53 (61, 61, 65) sts. Cont in pat until cap measures 3½ (4, 4½, 5)"/9 (10, 11.5, 12.5)cm from bind-off rows, end with a WS row.

Dec row (RS) K1, ssk, work in pat as established to last 3 sts, k2tog, k1—2 sts dec'd.

Rep dec row every other row 4 times more—43 (51, 51, 55) sts. Work 1 WS row.

Next row (RS) K1, [k2tog] 21 (25, 25, 27) times—22 (26, 26, 28) sts.

Next row (WS) [K2tog] 11 (13, 13, 14) times.

Bind off rem 11 (13, 13, 14) sts.

Finishing

Block pieces lightly to measurements. Sew shoulder seams. Set in sleeves. Sew side and sleeve seams.

Neck edging

With RS facing, beg at left back neck edge, pick up and k evenly along neck edge, picking up 1 st in every bound-off st and 3 sts for every 4 rows along shaped edges. Bind off knitwise on WS.

Buttonhole band ruffle

With RS facing, beg at lower edge of divided left back opening, pick up and k 3 sts for every 4 rows along left back edge to neck edge. Purl 1 row on WS.

Next row (RS) *Kfb; rep from * to end. Purl 1 row on WS. Bind off knitwise.

Sew buttons to right back buttonband to correspond to buttonholes. ■

2 Lace Tee



Sized for Small (Medium, Large, X-Large, XX-Large) and shown in size Medium on page 28q



Finished Measurements

- Bust 32 (36, 40, 44, 48)"/81 (91.5, 101.5, 111.5, 122)cm
- Length 21½ (22½, 23½, 24, 24½)"/54.5 (57, 59.5, 61, 62)cm
- Upper arm 14 (15, 16, 17, 18)"/35.5 (38, 40.5, 43, 45.5)cm

Note Bust measurements are given for unstretched fabric, fabric will stretch slightly when worn.

Materials

- 2 (2, 2, 3, 3) skeins of Noro/KFI *Taiyo Sock* in #S8
- One size 10 (6mm) circular needle, 32"/80cm long OR SIZE TO OBTAIN GAUGE
- Two size 3 (3.25mm) double-pointed needles (dpn) for I-cord drawstring
- Size D/3 (3.25mm) crochet hook

Gauge

16 sts and 24 rows = 4"/10cm over pattern stitch, unstretched, using size 10 (6mm) needle.

TAKE TIME TO CHECK GAUGE.

Pattern Stitch

(over an even number of sts)

Row 1 P1, *yo, p2tog; rep from * to last st, p1.

Rep row 1 for pattern stitch.

Notes

- 1) Tee is worked sideways from sleeve to sleeve.
- 2) Circular needle is used to accommodate large number of sts. Do not join.
- 3) A larger size needle than recommended on the ball band is used to create and open, airy fabric.

Back

Cast on 28 (30, 32, 34, 36) sts for lower edge of right sleeve.

Work in pattern stitch until sleeve measures 4 (4, 4½, 5, 5½)"/10 (10, 11.5, 12.5, 14)cm, end with a WS row.

Next row (RS) Cast on 58 (60, 62, 62, 62) sts for side seam, work in pat to end—86 (90, 94, 96, 98) sts.

Cont in pattern stitch over all sts until piece measures 16 (18, 20, 22, 24)"/40.5 (45.5, 51, 56, 61)cm from side seam cast-on row, end with a WS row.

Next row (RS) Bind off 58 (60, 62, 62, 62) sts, work in pat to end—28 (30, 32, 34, 36) sts.

Cont in pattern stitch until sleeve measures 4 (4, 4½, 5, 5½)"/10 (10, 11.5, 12.5, 14) from bind-off row.

Bind off rem sts.

Front

Work same as for back.

Finishing

With RS together, using crochet hook, slip stitch shoulder seams tog 7 (8, 9½, 11, 12½)"/18 (20.5, 24, 28, 31.5)cm from each shoulder edge, leaving approx 10"/25.5cm unseamed for neck opening. Slip stitch side and underarm seams.

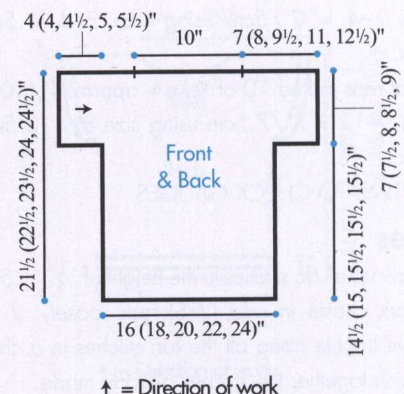
Neck and lower edging

With RS facing and crochet hook, work a rnd of single crochet evenly around neck opening.

Repeat along lower edging of shell.

Drawstring

With dpn, cast on 3 sts and work I-cord as foll: *Knit one row. Without turning work, slide the sts back to the opposite end of needle to work next row from RS. Pull yarn tightly from the end of the row. Rep from * until I-cord measures approx 36 (40, 44, 48, 52)"/91.5 (101.5, 111.5, 122, 132)cm long. Using photo as guide, pull drawstring evenly through yarn over spaces approx 8"/20.5cm from lower edge. Knot ends of drawstring and tie. ■



3 Crochet Openwork Top



Sized for Small (Medium, Large) and shown in size Small on page 29.

●●●○ INTERMEDIATE

Finished Measurements

- Bust approx 34 (38, 42)"/86 (96.5, 106.5)cm
- Length approx 23½ (23½, 25½)"/59.5 (59.5, 65)cm
- Upper arm approx 14 (14, 16)"/35.5 (35.5, 40.5)cm

Materials

- 3 (4, 5) balls of Noro/KFI Taiyo Sock in S48
- Size E/4 (3.5mm) crochet hook, OR SIZE TO OBTAIN GAUGE

Gauges

- 2 pat reps in Rnd 2 of Yoke = approx 2¾"/7cm; Rnds 1–4 = 2"/5cm using size E/4 (3.5mm) hook.
- 2 pat reps in Rnd 10 of Yoke = approx 4"/10cm; Rnds 9–12 = 3"/7.5cm using size E/4 (3.5mm) hook.

TAKE TIME TO CHECK GAUGES.

Notes

- 1) Draw up all dc stitches to the height of ½"/1.5cm.
- 2) Work chains in odd (WS) rnds loosely. If you have trouble fitting all the fan stitches in a ch-sp, squish together the stitches already made.
- 3) Garment is worked in the round, from the top down, turning at the end of every rnd.

Yoke

Ch 144 (156, 168), sl st to first ch to form a ring, being careful not to twist the sts.

Rnd 1 (WS) Ch 3 (counts as first dc here and throughout), dc in next ch, *ch 3, sk 2 ch, dc in each of next 4 ch; rep from * around, end last rep, dc in last 2 ch, sl st in top of beg ch-3—24 (26, 28) ch-3 sps reps. Turn.

Rnd 2 (RS) Sl st to next ch-3 sp, work (ch 3, 2 dc, ch 3, 3 dc) in ch-3 sp, *(3 dc, ch 3, 3 dc) in next ch-3 sp; rep from * around, end sl st in top of beg ch-3. Turn.

Inc rnd 3 (WS) Ch 3, dc in same st as sl st, *ch 4, work 4 dc in next ch-3 sp; rep from * around, end ch 4, 2 dc in last dc, sl st in top of beg ch-3—25 (27, 29) ch-4 sps. Turn.

Rnd 4 Sl st in next ch-4 sp, (ch 3, 3 dc, ch 3, 4 dc) in ch-4 sp, *(4 dc, ch 3, 4 dc) in next ch-4 sp; rep from * around, sl st in top of beg ch-3. Turn.

Inc rnd 5 Ch 3, dc in same st as sl st, *ch 5, 4 dc in next ch-3 sp; rep from * around, end ch 5, 2 dc in last dc, sl st in top of beg ch-3—26 (28, 30) ch-5 sps. Turn.

Rnd 6 Sl st to next ch-5 sp, (ch 3, 4 dc, ch 3, 5 dc) in ch-5 sp, *(5 dc, ch 3, 5 dc) in next ch-5 sp; rep from * around, end sl st in top of beg ch-3. Turn.

Inc rnd 7 Ch 3, dc in same st as sl st, *ch 6, 4 dc in next ch-3 sp, rep from * around, end ch 6, 2 dc in last dc, sl st in top of beg ch-3—27 (29, 31) ch-6 sps. Turn.

Rnd 8 Sl st to next ch-6 sp, (ch 3, 5 dc, ch 3, 6 dc) in ch-6 sp, *(6 dc, ch 3, 6 dc) in next ch-6 sp; rep from * around, end sl st in top of beg ch-3. Turn.

Inc rnd 9 Ch 3, dc in same st as sl st, ch 7, 4 dc in next ch-3 sp; rep from * around, end ch 7, 2 dc in last dc, sl st in top of beg ch-3—28 (30, 32) ch-7 sps. Turn.

Rnd 10 Sl st to next ch-7 sp, (ch 3, 6 dc, ch 3, 7 dc) in ch-7 sp, *(7 dc, ch 3, 7 dc) in next ch-7 sp; rep from * around, end sl st in top of beg ch-3. Turn.

Rnds 11–16 (11–16, 11–20) Rep rnds 9 and 10 for 3 (3, 5) times more, therefore adding one ch-7 sp on each WS rnd and ending with 31 (33, 37) ch-7 sps at end of rnd 16 (16, 20).

Body

Rnd 1 (WS) Sl st to next ch-3 sp, ch 3, 3 dc in ch-3 sp, [ch 7, 4 dc in next ch-3 sp] 3 (4, 5) times, ch 7, (2 dc, tr) in next ch-3 sp, pm in tr just made, sk 6 (6, 7) ch-3 sp (first sleeve sts), (tr, 2 dc) in next ch-3 sp, pm in tr just made, [ch 7, 4 dc in next ch-3 sp] 7 (8, 9) times, ch 7, (2 dc, tr) in next ch-3 sp, pm in tr just made, sk 6 (6, 7) ch-3 sp (2nd sleeve sts), (tr, 2 dc) in next ch-3 sp, pm in tr just made, [ch 7, 4 dc in next ch-3 sp] 4 (5, 6) times, ch 7, sl st in top

of beg ch-3—17 (19, 21) ch-7 sps. Turn.

Note: There are 8 (9, 10) pat reps on Front, 9 (10, 11) pat reps on Back. Markers will be used later for joining yarn for sleeves.

Rnd 2 (Ch 3, 6 dc, ch 3, 7 dc) in ch-7 sp, *(7 dc, ch 3, 7 dc) in next ch-7 sp; rep from * around, end sl st in top of beg ch-3, sl st over next 7 dc, sl st in next ch-3 sp, turn.

Rnd 3 Ch 3, 3 dc in same ch-3 sp, *ch 7, 4 dc in next ch-3 sp; rep from * around, end ch 7, sl st in top of beg ch-3. Turn.

Rep rnds 2 and 3 to work even in pat until 14 rnds or approx 10½"/26.5cm, have been worked in Body. Fasten off.

Right Sleeve

With WS facing, join yarn at first marker on right half of body and work sleeve between 2 markers as foll:

Rnd 1 Ch 3, 3 dc in same sp as joining, *ch 7, 4 dc in next ch-3 sp, rep from * around, ch-7, sl st in top of beg ch 3—7 (7, 8) ch-7 sps. Turn.

Rep rnds 2 and 3 as for Body to work even in pat for 6 rnds. Sleeve measures approx 5"/12.5cm. Fasten off.

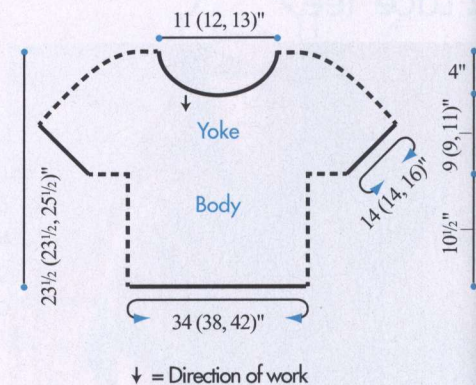
Left Sleeve

With WS facing, join yarn between 2 markers on left half of Body.

Work same as for Right Sleeve.

Finishing

Block piece to measurements.



Neck trim

Note: If a smaller neck opening is desired, work fewer sc around neck to pull in the edge.

With RS facing, locate end of rnd 1 at the center of a group of 4 dc. Join yarn in base ch of 3rd st of this 4 dc group, ch 1, sc in base ch of same st, sc in base ch of next st, *2 sc in ch-3 sp, sc in base ch of next 4 sts, rep from * around, sc in base ch of last 2 sts, sl st to first sc. Fasten off. ■

4 Drop Stitch Yoke Top



Sized for Small (Medium, Large, X-large) and shown in size Small on page 30.

●●○○ EASY

Finished Measurements

- Bust 33 (37, 41½, 45)"/84 (94, 104.5, 114)cm
- Length 20 (21½, 23½, 24½)"/51 (54.5, 59.5, 62)cm

Materials

- 4 (5, 6, 7) skeins of Noro/KFI Tokonatsu in #6
- Size 7 (4.5mm) circular needles, 16 and 29"/40 and 74cm long OR SIZE TO OBTAIN GAUGE
- One set (5) size 7 (4.5mm) double-pointed needles (dpn)
- Stitch markers
- Stitch holders

Gauge

19 sts and 28 rnds = 4"/10cm over St st using size 7 (4.5mm) needle.

TAKE TIME TO CHECK GAUGE.

Stitches Used

K1wrap3 Knit next st, wrapping yarn 3 times around RH needle.

Garter Stitch in Rnds *Knit 1 rnd, purl 1 rnd; rep from * for garter st in rnds.

Stockinette Stitch in Rnds Knit every rnd.

Note

Top is worked in one piece from the top down.

Yoke

With shorter circular needle, cast on 90 (94, 98, 102) sts. Join, taking care not to twist sts and place marker (pm) for beg of rnd.

Beg with a knit rnd, work 5 rnds in garter st.

Beg pattern stitch

Note Change to larger circular needle when sts no longer fit comfortably on shorter needle.

Rnd 1 Knit.

Rnd 2 *K1wrap3; rep from * around.

Rnd 3 Knit, dropping extra wraps.

Rnd 4 Knit. **Rnd 5** Purl.

Rnd 6 (inc) *K1, kfb; rep from * around—135 (141, 147, 153) sts.

Rnd 7 Purl.

Rnds 8–12 Rep rnds 1–5.

Rnd 13 (inc) *K2, kfb; rep from * around—180 (188, 196, 204) sts.

Rnd 14 Purl.

Rnds 15–19 Rep rnds 1–5.

Rnd 20 (inc) *K3, kfb; rep from * around—225 (235, 245, 255) sts.

Rnd 21 Purl.

Rnds 22–26 Rep rnds 1–5.

Rnd 27 (inc) *K8 (5, 4, 4), kfb; rep from * around, end k 0 (1, 0, 0)—250 (274, 294, 306) sts.

Rnd 28 Purl.

Rnds 29–33 Rep rnds 1–5.

For Size Medium only

Beg with a knit rnd, work 4 rnds in garter st.

For Sizes Large and X-large only

Rnd 34 *K48 (13), kfb; rep from * around, end k 0 (12)—300 (327) sts.

Rnd 35 Purl.

Rnds 36–40 Rep rnds 1–5.

Beg with a knit rnd, work 4 (8) rnds in garter st.

For all Sizes—Divide Body and Sleeves

Next rnd K83 (93, 103, 111) for front, place side marker, place next 47 (49, 52, 57) sts on st holder or scrap yarn for sleeve, k73 (83, 93, 102) for

back, place next 47 (49, 52, 57) sts on st holder or scrap yarn for sleeve—156 (176, 196, 213) sts for body.

Work in St st for 2 (2½, 3, 3)"/5 (6.5, 7.5, 7.5)cm.

Beg waist shaping

Dec rnd [K2tog, k to 2 sts before marker, ssk, sl marker] twice—4 sts dec'd.

Cont in St st, rep dec rnd every 5th rnd twice more—144 (164, 184, 201) sts.

Work even in St st for 3½ (3½, 4, 4)"/9 (9, 10, 10)cm from last dec rnd.

Inc rnd [Kfb, k to 1 st before marker, kfb, sl marker] twice—4 sts inc'd.

Rep inc rnd every 5th rnd twice more—156 (176, 196, 213) sts.

Work in St st until body measures 11 (12, 13, 13)"/28 (30.5, 33, 33)cm from underarm.

Beg with a purl rnd, work 8 rnds in garter st. Bind off purlwise.

Sleeves

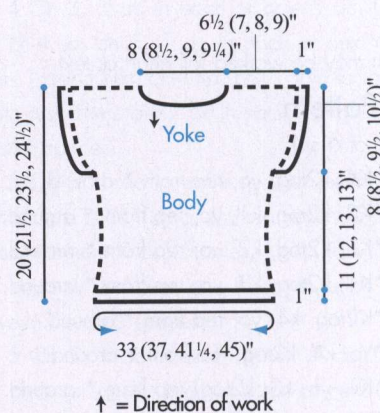
Place 47 (49, 52, 57) sleeve sts on dpn. Join yarn at underarm and pm for beg of rnd.

Beg with a purl rnd, work 8 rnds in garter st.

Bind off purlwise.

Finishing

Sew underarm seams. ■



5 Lace Cowl



Shown on page 31.

●●○○ EASY

Finished Measurements

- Circumference 58"/147cm
- Length 9"/23cm

Materials

- 2 skeins of Noro/KFI Kibou in #5
- Size 9 (5.5mm) circular needle, 40"/100cm long, OR SIZE TO OBTAIN GAUGE
- Stitch marker

Gauge

18 sts and 20 rnds = 4"/10cm over Lace Pat using size 9 (5.5mm) needle.

TAKE TIME TO CHECK GAUGE.

Note

Lace Pat may be worked foll chart or text.

Lace Pattern

(multiple of 6 sts)

- Rnd 1 *K4, k2tog, yo; rep from * around.
 Rnd 2 *K3, k2tog, k1, yo; rep from * around.
 Rnd 3 *K2, k2tog, k2, yo; rep from * around.
 Rnd 4 *K1, k2tog, k3, yo; rep from * around.
 Rnd 5 *K2tog, k4, yo; rep from * around.
 Rnd 6 *Yo, k4, k2tog; rep from * around.
 Rnd 7 *K1, yo, k3, k2tog; rep from * around.
 Rnd 8 *K2, yo, k2, k2tog; rep from * around.
 Rnd 9 *K3, yo, k1, k2tog; rep from * around.
 Rnd 10 *K4, yo, k2tog; rep from * around.

Rep rnds 1–10 for Lace Pat.

Cowl

Cast on 258 sts. Join, taking care not to twist sts,



Stitch Key

- k
- ⊗ k2tog
- yo

and place marker for beg of rnd. [Knit 1 rnd, purl 1 rnd] 3 times.

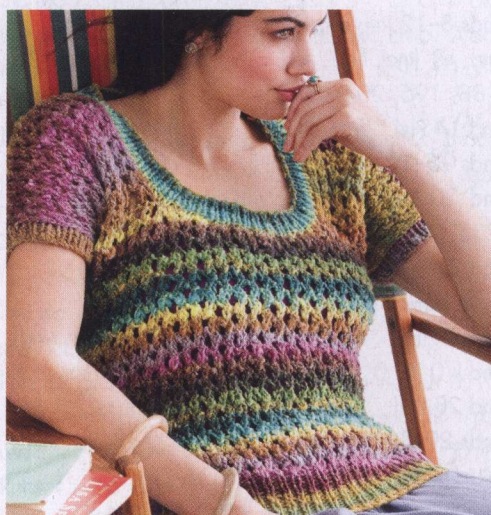
Work 10 rnds of Lace Pat 4 times.

[Knit 1 rnd, purl 1 rnd] 3 times. Bind off.

Finishing

Block lightly to measurements. ■

6 Lace Pattern Top



Sized for Small (Medium, Large, X-Large, 1X, 2X) and shown in size Medium on page 32.

●●●● EXPERIENCED

Finished Measurements

- Bust 41 (43½, 46, 48, 50, 52½)/104 (110.5, 117, 122, 127, 133.5)cm
- Length 24 (24, 24¾, 24¾, 25½, 26¼)/61 (61, 63, 63, 65, 67)cm
- Upper arm 12 (12, 13½, 13½, 15, 16½)/30.5 (30.5, 34, 34, 38, 42)cm

Materials

- 4 (4, 5, 5, 6, 6) skeins in Noro Taiyo in #25
- One pair each sizes 7 and 9 (4.5 and 5.5mm) needles OR SIZE TO OBTAIN GAUGE
- One each sizes 6 and 7 (4 and 4.5mm) circular needle, 24"/60cm long
- Removable clip-on markers

Gauge

14 sts and 20 rows = 4"/10cm over lace pat st using size 9 (5.5mm) needles.

TAKE TIME TO CHECK GAUGE.

Sloped bind-off

To shape the shoulders and neck, always slip the last st on the row preceding the bind-off row. Then to work the first bind off st, pass the first st over the 2nd st on LH needle, then bind off rem sts in the regular way.

Lace Pattern Stitch

(over a multiple of 4 sts)

Row 1 (RS) K4, *yo twice, k4; rep from * to end.

Row 2 P2, *p2tog, (p1, k1) into the double yo, p2tog; rep from *, end p2.

Row 3 K2, yo, *k4, yo twice; rep from *, end k4, yo, k2.

Row 4 P3, *(p2tog) twice, (p1, k1) into the double yo; rep from *, end (p2tog) twice, p3.

Rep rows 1–4 for lace pat st.

Note that only on WS rows 2 and 4, the original st count is maintained.

Back

With smaller straight needles, cast on 71 (75, 79, 83, 87, 91) sts.

Work in k1, p1 rib for 3"/7.5cm, inc 1 st at center of the last WS row—72 (76, 80, 84, 88, 92) sts. Change to larger straight needles and work in lace pat st until piece measures 16"/40.5cm from beg, end with a pat row 4.

Inc for sleeves

Next row (RS) Cast on 4 sts, work pat row 1 to end.

Next row (WS) Yo needle twice, cast on 4 sts using backwards cast-on, then work pat row 2 to end—80 (84, 88, 92, 96, 100) sts.

Cont in pat st for 30 (30, 34, 34, 38, 42) rows more—armhole edge measures approx 6 (6, 6¾, 6¾, 7½, 8¼)/15 (15, 17, 17, 19, 21)cm, end with a pat row 4.

Shoulder shaping

Note Use the sloped bind-off method to shape the shoulders.

Row 1 (RS) Bind off 4 sts, k3 more sts, *yo twice,

k4*; rep between *'s to the last 4 sts, end k3, sl 1 (note that the last double yo is eliminated).

Row 2 (WS) Bind off 4 sts, p1 more st, *p2tog, (p1, k1) into the double yo, p2tog*; rep between *'s, and p1, sl 1.

Row 3 Bind off 4 sts, k1 more st, yo, *k4, yo twice*; rep between *'s to the last 10 sts, end k4, yo, k5, sl 1.

Row 4 Bind off 4 sts, p2 more sts, *[p2tog] twice, (p1, k1) into the double yo*; rep between *'s to the last 7 sts, end (p2tog) twice, p2, sl 1—64 (68, 72, 76, 80, 84) sts.

Rows 5–8 Rep rows 1–4 once more—48 (52, 56, 60, 64, 68) sts.

On the last WS row, place 2 removable slip-on markers to mark center 16 (20, 24, 20, 24, 20) sts.

Back neck shaping

Row 9 (RS) Bind off 4 (4, 4, 8, 8, 8) sts, k3 more sts, *yo twice, k4*; rep between *'s to the marked sts, join a 2nd ball of yarn and bind off center 16 (20, 24, 20, 24, 20) sts; 2nd side: K3 more sts, *yo twice, k4*; rep between *'s to the last 4 (4, 4, 8, 8, 8) sts, do not work the double yo, end k4 (4, 4, 8, 8, 8).

Row 10 *First side:* Bind off 4 (4, 4, 8, 8, 8) sts, p3 more sts, *(p1, k1) into the double yo, (p2tog) twice*; rep between *'s to end of the sts; *2nd side:* bind off 4 sts, *(p2tog) twice, (p1, k1) into the double yo*; rep between *'s, end p2tog, p1, sl 1. **Next row** *First side:* Bind off 8 (8, 8, 8, 8, 12) sts; *2nd side* Bind off 4 sts, k to end.

On the next WS row, bind off rem 8 (8, 8, 8, 8, 12) sts for left shoulder.

Front

Work same as back until piece measures approx 15½ (15½, 17, 17, 17½, 18)"/39.5 (39.5, 43, 43, 44.5, 45.5)cm from beg. On the last WS row, pm to mark the center 8 (12, 16, 12, 16, 12) sts.

Note that on the Small and Medium sizes only, the inc for sleeves has not been worked yet.

Neck shaping

On the next RS row, work to the center marked sts, join a 2nd ball of yarn and bind off center 8 (12, 16, 12, 16, 12) sts, work to end.

Cont to work both sides at once (and inc for sleeves on the Small and Medium sizes as on back), bind off 4 sts from each neck edge twice. Work even on the 28 (28, 28, 32, 32, 36) sts each side until piece measures same as back to the shoulder shaping.

Work the shoulder shaping as on back.

Finishing

Sew shoulder seams.

Sleeve trims

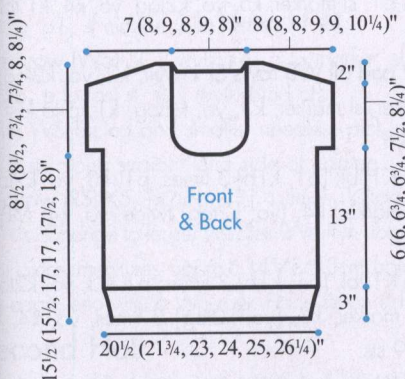
With RS facing and smaller straight needles, pick up and k 49 (49, 55, 55, 61, 73) sts evenly along sleeve edge. Work in k1, p1 rib for 4 rows. Bind off firmly in rib.

Sew side seams.

Neckband

With RS facing and larger circular needle, pick up and k 26 (30, 34, 30, 34, 30) sts along back neck edge, 90 sts along front neck edge—116 (120, 124, 120, 124, 120) sts. Join and pm to mark beg of rnds. Work in k1, p1 rib for 4 rnds. Change to smaller circular needle and work 2 rnds more. Bind off firmly in rib. ■

7 Crochet Circles Afghan



Shown on page 33.

● ● ● ○ INTERMEDIATE

Finished Measurements

54" x 66"/137cm x 167.5cm

Materials

- 9 skeins of Noro/KFI Taiyo Sport in #10
- One each sizes F/5 and G/6 (3.75 and 4mm) crochet hooks OR SIZE TO OBTAIN GAUGE

Gauge

One circle motif = 7"/18cm across using size G/6 (4mm) crochet hook.

TAKE TIME TO CHECK GAUGE.

Circle Motif

(make 83)

With larger hook, ch 6, join with sl st to first ch to form ring.

Rnd 1 Ch 3 (counts as 1 dc on this and every rnd), 1 dc in ring, ch 2, [2 dc in ring, ch 2] 5 times, join to top of ch-3 with sl st.

Rnd 2 Ch 3, 1 dc in same sp with joining and next next dc, [1 dc in next ch-2 sp, ch 3, 1 dc in same ch-2 sp, 1 dc in each of next 2 dc] 5 times, 1 dc in next ch-2 sp, ch 3, join to top of ch-3 with sl st. There are 4 dc in each triangle between the ch-3 spaces.

Rnd 3 Ch 3, 1 dc in same sp with joining and in each of next 3 dc, [1 dc in next ch-3 space, ch 4, 1 dc in same ch-3 sp, 1 dc in each of next 4 dc] 5 times, 1 dc in next ch-3 sp, ch 4, join to top of ch-3 with sl st. There are 6 dc in each triangle between the ch-4 spaces.

Rnd 4 Ch 3, 1 dc in each of next 5 dc, [1 dc in next ch-4 sp, ch 5, 1 dc in each of next 6 dc] 5 times, 1 dc in next ch-4 sp, ch 5, join to top of ch-3 with sl st. There are 7 dc in each triangle between the ch-5 spaces.

Rnd 5 Ch 3, 1 dc in same sp with joining and in each of next 6 dc, [ch 6, 1 dc in next ch-5 sp, 1 dc in each of next 7 dc] 5 times, ch 6, join to top of ch-3 with sl st. There are 8 dc in each triangle between the ch-6 spaces.

Rnd 6 Ch 3, 1 dc in each of next 7 dc, [1 dc in next ch-6 sp, ch 7, 1 dc in each of next 8 dc] 5 times, ch 7, join to top of ch-3 with sl st. There are 9 dc in each triangle between ch-7 spaces. Cut yarn leaving a long end for seaming.

1/2-Motifs

(worked back & forth in rows—make 10)

Ch 4, join with sl st to first ch to form a ring.

Row 1 Ch 3, 1 dc in ring, [ch 2, 2 dc in ring] twice, turn.

Row 2 Ch 3, 1 dc in each of first 2 dc, 1 dc in next ch-2 sp, ch 3, 1 dc in same ch-2 sp, 1 dc in each of next 2 dc, 1 dc in next ch-2 sp, ch 3, 1 dc in same ch-2 sp, dc in next dc, 2 dc in top of ch-3, turn.

Row 3 Ch 3, 1 dc in each of first 4 dc, 1 dc in next ch-3 sp, ch 4, 1 dc in same ch-3 sp, 1 dc in each of next 4 dc, 1 dc in next ch-3 sp, ch 4, 1 dc in same ch-3 sp, 1 dc in each of next 2 dc, 2 dc in next dc, 1 dc in top of ch-3, turn.

Row 4 Ch 3, skip first st, 1 dc in next 5 dc, 1 dc in next ch-4 sp, ch 5, 1 dc in next 6 dc, 1 dc in next ch-4 sp, ch 5, 1 dc in next 4 dc, 2 dc in next dc, 1 dc in top of ch-3, turn.

Row 5 Ch 3, skip first st, dc in next 6 dc, dc in next ch-5 sp, ch 6, dc in next 7 dc, dc in next ch-5 sp, ch 6, dc in next 5 dc, 2 dc in next dc, 1 dc in top of ch-3, turn.

Row 6 Ch 3, skip first st, dc in next 7 dc, dc in next ch-6 sp, ch 7, dc in next 8 dc, dc in next ch-6 sp, ch 7, dc in next 6 dc, 2 dc in next dc, dc in top ch-3. Fasten off leaving a long end for seaming.

Finishing

Follow the diagram, assemble the afghan in alternating strips of (8 circles and 7 circles) 5 times, then 8 circles on last strip. Use the 1/2-motifs as fillers along the

side edges. To join, from the WS with 9 dc matched to the corresponding 9 dc and with the long end threaded onto a tapestry needle, and matching the outside loops (leaving the inside loops free), whip stitch tog, reinforcing at the beg and the end of the joining. After assembling the circles, place the 1/2-motifs along the side edges to straighten out the edge and seam from the WS along 3 edges in same way. Sew in all ends neatly on the WS. Then, to trim the afghan, from the RS, with size F/5 (3.75 mm) hook, join in one 1/2-motif edge and *work 25 sc along the 1/2-motif, then ch 4, 1 sc in ch-7 loop, ch 4, 1 sc in between 2 dc, [ch 1, 1 sc in between 2 dc] 7 times, ch 4, 1 sc in ch-7 loop, ch 4; rep from * along the side edge, then cont around the lower motif using the same technique up to the joining of 2 circle motifs; then ch 4, sc in the joining, ch 4, then cont around entire afghan. Join and turn to work from the WS.

Rnd 2 (WS) *[Ch 3, sc in the ch-4 loop] twice, then ch 3, [skip 2 sc, sc in next ch-space] 3 times; rep from * to the ch-4 loop before the joining of 2 circles, work 1 sc in each of next 2 ch-4 loops (to close the joining gap); then cont to work in this way up to the 1/2-motif, working into back loops only, work 1 hdc in each of the 25 sc, then cont around the entire afghan in same way. Join and fasten off. Steam block lightly from the WS. ■

8 Fluted Scarf



Shown on pages 34 and 35.

● ● ○ ○ EASY

Finished Measurements

Approx 8 1/2 x 68"/21.5 x 172.5cm

Materials

- 3 skeins of Noro/KFI Taiyo in #28
- One pair each sizes 8 and 9 (5 and 5.5mm) needles, OR SIZE TO OBTAIN GAUGE
- Two size 8 (5mm) double-pointed needle (dpn)
- Stitch markers
- Stitch holder

Gauge

13 sts and 24 rows = 4"/10cm over ribbing pattern using size 9 (5.5mm) needles.

TAKE TIME TO CHECK GAUGE.

3-Needle Bind-Off

1. Hold right sides of pieces together on two needles. Insert third needle knitwise into first st of each needle, and wrap yarn knitwise.
2. Knit these two sts together, and slip them off the needles. *Knit the next two sts together in the same manner.
3. Slip first st on 3rd needle over 2nd st and off needle. Rep from * in step 2 across row until all sts are bound off.

Note

Edging is worked first, then scarf sts are picked up along side of edging. Scarf is worked in 2 halves and joined at center with 3-needle bind-off.

Stitches Used

K1b Knit 1 in the row below.

MB (make bobble) K into the front, back, front, back and front of next st, slide these 5 sts back to LH needle, bring working yarn behind sts and k5, sl 4 sts one at a time over last st worked, sl rem st back to LH needle and k1 tbl.

Border Pattern

(begins over 26 sts, stitch count varies)

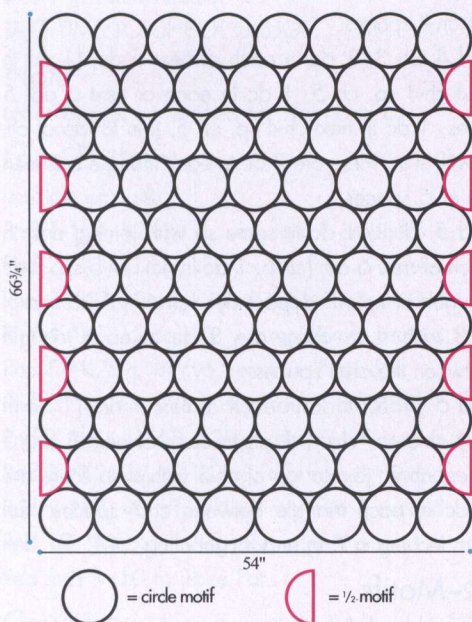
Row 1 (RS) K1 tbl, [p1, k1b] 3 times, p1, k3, yo, k2tog, p1, sl marker, k5, yo, k2tog, yo, k4, k1 tbl—27 sts.

Row 2 and all WS rows Sl 1 wyif, k2, yo, k2tog, p to marker, sl marker, k3, yo, k2tog, k1, p to last st, sl 1 wyif.

Row 3 K1 tbl, [p1, k1b] 3 times, p1, k3, yo, k2tog, p1, sl marker, k4, [yo, k2tog] twice, yo, k4, MB—28 sts.

Row 5 K1 tbl, [p1, k1b] 3 times, p1, k3, yo, k2tog, p1, sl marker, k3, [yo, k2tog] 3 times, yo, k4, k1 tbl—29 sts.

Row 7 K1 tbl, [p1, k1b] 3 times, p1, k3, yo, k2tog, p1, sl marker, k2, [yo, k2tog] 4 times, yo, k4, MB—30 sts.



Row 9 K1 tbl, [p1, k1b] 3 times, p1, k3, yo, k2tog, p1, sl marker, k1, [yo, k2tog] 5 times, yo, k4, k1 tbl—31 sts.

Row 11 K1 tbl, [p1, k1b] 3 times, p1, k3, yo, k2tog, p1, sl marker, k1, [k2tog, yo] 5 times, k2tog, k3, MB—30 sts.

Row 13 K1 tbl, [p1, k1b] 3 times, p1, k3, yo, k2tog, p1, sl marker, k2, [k2tog, yo] 4 times, k2tog, k3, k1 tbl—29 sts.

Row 15 K1 tbl, [p1, k1b] 3 times, p1, k3, yo, k2tog, p1, sl marker, k3, [k2tog, yo] 3 times, k2tog, k3, MB—28 sts.

Row 17 K1 tbl, [p1, k1b] 3 times, p1, k3, yo, k2tog, p1, sl marker, k4, [k2tog, yo] twice, k2tog, k3, k1 tbl—27 sts.

Row 19 K1 tbl, [p1, k1b] 3 times, p1, k3, yo, k2tog, p1, sl marker, k5, k2tog, yo, k2tog, k3, MB—26 sts.

Row 20 Rep row 2.

Rep rows 1–20 for border pat.

Ribbing Pattern

(multiple of 2 sts plus 1)

Row 1 (WS) Sl 1 wyif, p to last st, k1 tbl.

Row 2 (RS) Sl 1 wyif, p1, *k1b, p1; rep from * to last st, k1 tbl.

Rep rows 1 and 2 for ribbing pat.

First Half

With smaller needles, cast on 26 sts.

Row 1 (RS) K to last st, k1 tbl.

Row 2 (WS) Sl 1 wyif, k4, p7, place marker (pm) k6, p to last st, sl 1 wyif.

Beg border pattern

Work rows 1–20 of border pattern twice, then work rows 1–19 once more.

Next row (WS) Sl 1 wyif, k4, p to marker, sl marker, k3, yo, k2tog, k1, p to last st, sl 1 wyif.

Next row (RS) K1 tbl, [p1, k1] 3 times, p1, k3, yo, k2tog, p1, sl marker, k to last st, k1 tbl.

Next row (WS) Sl 1 wyif, k4, p to marker, sl marker, k6, p to last st, sl 1 wyif. Bind off.

With WS facing and smaller needles, pick up and k 32 sts along straight long side of edging.

Dec row (RS) K5, [k2tog, k3] 4 times, k2tog, k5—27 sts. Change to larger needles. Work in ribbing pat until piece measures approx 34"/86.5cm from bobble edge, end with a WS row. Place sts on st holder.

Second Half

Work as for first half. Join at center with 3-needle bind-off, using smaller needles.

I-cord Edging

With dpn, cast on 3 sts. Beg just above bobble edge, k3, pick up and k 1 st in scarf edge, *without turning, slide sts back to the opposite end of needle to work next row from RS. Pull yarn tightly from end of the row, k2, k2tog tbl, pick up and k 1 st in scarf edge; rep from * along scarf edge, picking up approx 3 sts for every 4 rows to just before bobble edge. Work last row as foll: [k2tog tbl] twice. Pull yarn through last 2 sts and fasten off. Block lightly to measurements. ■

9 Textured Shawl



Shown on pages 36 and 37.

●●○○ EASY

Finished Measurements

Approx 16½ x 76"/42 x 193cm

Materials

- 6 balls of Noro/KFI Silk Garden Lite in #2083
- One pair size 7 (4.5mm) needles, OR SIZE TO OBTAIN GAUGE

Gauge

18 sts and 26 rows = 4"/10cm over St st using size 7 (4.5mm) needles.

TAKE TIME TO CHECK GAUGE.

Lace Ladder Stitch

(multiple of 7 sts plus 8)

Row 1 (RS) K2, *k2tog, yo twice, ssk, k3; rep from * to last 6 sts, k2tog, yo twice, ssk, k2.

Row 2 K2, *k1, (k1 tbl, k1) into double yo, k1, p3; rep from * to last 6 sts, k1, (k1 tbl, k1) into double yo, k3.

Row 3 K2, *k2tog, yo twice, ssk, knit into the 3rd

st on the LH needle, then k into the 2nd st, then k into the first st, let all 3 sts drop from needle tog; rep from * to last 6 sts, k2tog, yo twice, ssk, k2.

Row 4 Rep row 2.

Rep rows 1–4 for lace ladder stitch.

Shawl

Cast on 75 sts.

Row 1 (RS) K3, *k3, p3; rep from * to last 6 sts, k6.

Row 2 (WS) K3, *p3, k3; rep from * to end.

Rep rows 1 and 2 for ribbing for 5"/12.5cm.

Knit 14 rows.

Next row (RS) K3, k2tog, k20, k2tog, k21, k2tog, k20, k2tog, k3—71 sts. Knit 1 WS row.

Work in lace ladder stitch until piece measures approx 69"/175cm from beg, end with a row 4.

Next row (RS) Knit.

Next row (WS) K3, kfb, k20, kfb, k21, kfb, k20, kfb, k3—75 sts.

Knit 15 rows, end with a RS row. Beg with a WS row, work in k3, p3 ribbing with 3 sts garter st each side as for beg of shawl for 5"/12.5cm, end with a RS row. Bind off.

Block lightly to measurements. ■

10 Crescent-Shape Shawl



Shown on page 38.

●●○○ EASY

Finished Measurements

- Width along top edge 57"/144.5cm
- Length 15"/38cm

Materials

- 3 balls of Noro/KFI Silk Garden Lite in #2093
- Size 10 (6mm) circular needle, 40"/100cm long OR SIZE TO OBTAIN GAUGE

12 Spiral Rib Tote



Shown on page 40.

●●○○ EASY

Finished Measurements

- Width 18½"/47cm
- Length (excluding handle) 15"/38cm

Materials

- 2 skeins of Noro/KFI *Silk Garden Sock* in #S269
- Size 6 (4mm) circular needle, 29"/74cm long, OR SIZE TO OBTAIN GAUGE
- Three size 6 (4mm) double-pointed needles
- Cable needle (cn)
- Stitch marker

Gauge

22 sts and 28 rnds = 4"/10cm over k5, p5 spiral using size 6 (4mm) needles.

TAKE TIME TO CHECK GAUGE.

3-Needle Bind-Off

1. Hold right sides of pieces together on two needles. Insert third needle knitwise into first st of each needle, and wrap yarn knitwise.
2. Knit these two sts together, and slip them off the needles. *Knit the next two sts together in the same manner.
3. Slip first st on 3rd needle over 2nd st and off needle. Rep from * in step 2 across row until all sts are bound off.

Stitches Used

- 4-st RPC Sl 2 sts to cn, hold to back, k2, p2 from cn.
- 4-st LPC Sl 2 sts to cn, hold to front, p2, k2 from cn.

Tote

With circular needle, cast on 200 sts. Join, taking care not to twist sts and place marker (pm) for beg of rnd.

Rnd 1 Knit.

Rnd 2 *K5, p5; rep from * around.

Rnd 3 Kfb, k3, *p5, k5; rep from *, disregarding beg of rnd marker (do not remove), cont to work in a spiral until piece measures approx 11"/28cm from beg, end with a p5 before original beg of rnd marker—201 sts.

Next rnd *K2tog, k3, p2tog, p3; rep from * to last 11 sts, k2tog, k3, p2tog, p2, p2tog—160 sts.

Next rnd K the knit sts and p the purl sts to last 2 sts, sl last 2 sts.

Beg inverse cable pattern

Remove marker, slip the last 2 sts from previous rnd to LH needle, replace beg of rnd marker.

Rnd 1 *4-st RPC, 4-st LPC; rep from * around.

Rnds 2–8 *K2, p4, k2; rep from * around.

Rnd 9 *4-st LPC, 4-st RPC; rep from * around.

Rnds 10–17 *P2, k4, p2; rep from * around.

Rep rnds 1–13 once more.

Next rnd Work 20 sts in pat (k the knit sts and p the purl sts), bind off next 40 sts, work in pat until 40 sts from bind-off and place these 40 sts on dpn, bind off next 40 sts, work rem sts in pat, remove marker, work next 20 sts.

Turn and work back and forth over 40 sts for strap as foll:

Row 1 K2tog, work in pat to end—1 st dec'd.

Rep last row 9 times more—30 sts.

Row 11 (dec) *K2tog, p2tog; rep from * to last 2 sts, k2tog—15 sts.

Row 12 Sl 1, work in k1, p1 rib as established.

Rep last row until strap measures approx 22"/56cm from dec row. Leave sts on hold on dpn.

Rejoin yarn to 40 sts on hold for opposite strap.

Work rows 1–12 as for first strap—15 sts.

Join to end of first strap using 3-needle bind-off.

Sew bottom seam. ■

13 Möbius Cowl



Shown on page 41.

●●○○ EASY

Finished Measurements

- Circumference 36"/91.5cm
- Width 12¼"/31cm

Materials

- 2 skeins of Noro/KFI *Taiyo* in #25
- One pair each sizes 8 and 9 (5 and 5.5 mm) needles OR SIZE TO OBTAIN GAUGE
- Tapestry needle

Gauge

16 sts and 21 rows = 4"/10 cm over St st using larger needles.

TAKE TIME TO CHECK GAUGE.

Cowl

With smaller needles, cast on 49 sts.

Row 1 (RS) P1, *k1tbl, p1; rep from * to end.

Row 2 K1, *p1, k1; rep from * to end.

Rep these 2 rows for twisted rib for 18 rows more or until piece measures 4"/10cm from beg. Change to larger needles and cont in St st (k on RS, p on VWS) until piece measures 32"/81cm from beg. Change to smaller needles and rep rows 1 and 2 (for twisted rib) for 4"/10cm more. Do not bind off. Cut yarn leaving a long tail for sewing, then twist the scarf so that the VWS of last row meets the RS of the cast-on edge (for "mobius" twist). Thread tail onto tapestry needle and pull end through the first st on needle, then *insert needle through the corresponding cast-on st from front to back to front and pull up tightly to seam tog, pull through next st on needle; rep from * until all sts from needle are joined to the cast-on edge. ■

14 Lacy Tam



Sized for adult woman and shown on page 42.

●●●○ INTERMEDIATE

Finished Measurements

- Head circumference (above band) 21"/53cm (band edge) 19"/48cm
- Depth 8½"/21.5cm

Materials

- 1 skein of Noro/KFI Taiyo Sport in #11
- One each sizes 3 and 4 (3.25 and 3.5mm) circular needle, each 16"/40cm long
- One set (5) size 4 (3.5mm) double-pointed needles (dpn) OR SIZE TO OBTAIN GAUGE
- Stitch marker

Gauge

24 sts and 32 rnds = 4"/10cm over lace pat st using larger circular needles.
TAKE TIME TO CHECK GAUGE.

Stitches Used

S2KP Sl 2 sts tog knitwise, then k the next st and pass 2 sl sts over the k st once at a time.

Lace Pattern Stitch

(over multiple of 6 sts)

Rnd 1 Knit.

Rnd 2 Knit.

Rnd 3 *K3, yo, S2KP, yo; rep from * around.

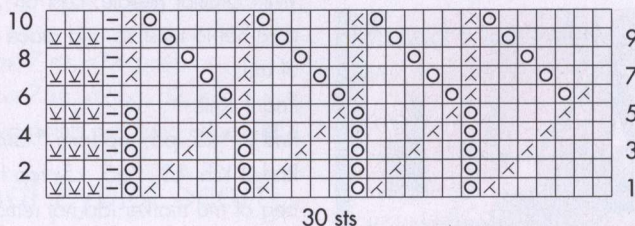
Rnd 4 Purl.

Rep rnds 1–4 for lace pat st.

Note

When working the lace pat st on the dpn, there will be a yo at the end of each of the 4 dpn on pat rnd 3. Take care to preserve this yo for the next pat rnd.

CHART FOR PATTERN #15



Tam

Beg at the lower edge with smaller circular needle, cast on 105 sts. Join and pm to mark beg of rnds. K 1 rnd, p 1 rnd (for garter st) for a total of 10 rnds or until piece measures 1"/2.5cm from beg.

Next rnd [Kfb, k6] 15 times—120 sts.

Beg lace pattern

Change to larger circular needle and work the 6-st rep of lace pat (20 reps) until piece measures 5"/12.5cm from beg, end with rnd 3 of 8th rep of lace pat st. Divide sts onto 4 dpn as foll:

Next rnd Needle 1 P30; Needle 2 P30; Needle 3 P30; Needle 4 P30.

Dec rnd 1 Needle 1 SK2P, k to end of needle; Needles 2, 3 and 4 Rep needle 1—8 sts dec'd and 28 sts on each dpn.

Work 3 rnds even.

Dec rnd 2 Needle 1 K16, SK2P, k to end of needle; Needles 2, 3 and 4 Rep needle 1—8 sts dec'd and 26 sts on each dpn.

Work 3 rnds even.

Dec rnd 3 Needle 1 K4, SK2P, k to end of needle; Needles 2, 3 and 4 Rep needle 1—8 sts dec'd and 24 sts on each dpn.

Work 3 rnds even.

Dec rnd 4 Needle 1 K18, SK2P, k to end of needle; Needles 2, 3 and 4 Rep needle 1—8 sts dec'd and 22 sts on each dpn.

Work 3 rnds even.

Dec rnd 5 Needle 1 K8, SK2P, k to end of needle; Needles 2, 3 and 4 Rep needle 1—8 sts dec'd and 20 sts on each dpn.

Knit 1 rnd.

Next (openwork) rnd Needle 1 [K1, yo, S2KP, yo] 5 times; Needles 2, 3 and 4 Rep needle 1.

Purl 1 rnd.

Dec rnd 6 Needle 1 K2tog, k to last 2 sts, SKP; Needles 2, 3 and 4 Rep needle 1—8 sts dec'd and 18 sts on each dpn.

Dec rnd 7 Rep dec rnd 6—16 sts on each dpn.

Next (openwork) rnd Needle 1 [K1, yo, S2KP, yo] 4 times; Needle 2, 3 and 4 Rep needle 1.

Stitch Key

□ k on RS, p on WS

▢ p on RS, k on WS

⊠ k2tog on RS, p2tog on WS

⊙ yo

⊞ slip 1 wyib

Purl 1 rnd.

Dec rnd 8 Rep dec rnd 6—14 sts on each dpn.

Dec rnd 9 Rep dec rnd 6—12 sts on each dpn.

Next (openwork) rnd Work as previous openwork rnd only rep brackets 3 times on each dpn.

Purl 1 rnd.

Dec rnds 10 and 11 Rep dec rnd 6 on each rnd—8 sts on each dpn on dec rnd 11.

Next (openwork) rnd Work as previous openwork rnd only rep brackets twice on each dpn.

Purl 1 rnd.

Dec rnds 12 and 13 Rep dec rnd 6 on each rnd—4 sts on each dpn on dec rnd 13.

Cut yarn leaving a long tail. Pull through all 16 sts once and draw up tightly to close top, then draw through sts once more to secure. ■

15 Multi-Directional Cap



Sized for adult woman and shown on page 43.

●●●○ INTERMEDIATE

Finished Measurements

- Head circumference 20"/51cm
- Depth 9½"/24cm

Materials

- 1 skein of Noro/KFI *Taiyo Sport* in #1
- One pair size 5 (3.75mm) needles OR SIZE TO OBTAIN GAUGE
- One size 5 (3.75mm) circular needle, 16"/40cm long
- Six size 5 (3.75mm) double-pointed needles (dpn)
- Stitch marker
- Tapestry needle

Gauge

26 sts and 30 rows = 4"/10cm over lace pat foll chart for band using size 5 (3.75mm) needles.

TAKE TIME TO CHECK GAUGE.

Crown Lace Pattern

(over multiple of 4 sts)

- Rnd 1 Knit.
- Rnd 2 *Yo, k2tog, k2; rep from * around.
- Rnd 3 Knit.
- Rnd 4 *K2, yo, k2tog; rep from * around.
- Rep rnds 1–4 for crown lace pat.

Band

With straight needles, beg at center back edge, cast on 30 sts. Working back and forth in rows foll lace chart, work in chart pat until there are 15 reps of the 10-row chart pat and piece measures 20"/51 from beg along the right (upper) band edge and 18"/45.5cm from beg along the left (lower) band edge. Cut yarn leaving a long tail for seaming. To join the band to form a circle, work as foll: with yarn on tapestry needle, draw up through first st on needle, *insert needle from front to back to front around the corresponding st on the cast-on edge, pull up to tighten the joining, draw through next st on needle; rep from * until all sts from needle are joined to the cast-on edge.

Crown

With circular needle and working from the RS, pick up and k 120 sts along upper edge of band. Join and pm to mark beg of rnd. Work rnds 1–4 of the crown lace pat.

Divide onto 5 dpn as foll:

Next rnd K24 on needle 1; k24 on needles 2, 3, 4 and 5.

**Dec rnd 1 Needle 1 K2tog, k2, *yo, k2tog, k2; rep from * to end of needle; Needles 2, 3, 4 and

5 Rep needle 1.

Dec rnd 2 Needle 1 K2tog, k to end of needle; Needles 2, 3, 4 and 5 Rep needle 1.

Dec rnd 3 Needle 1 K2tog, *k2, yo, k2tog; rep from * to end of needle; Needles 2, 3, 4 and 5 Rep needle 1.

Dec rnd 4 Rep dec rnd 2.

Next 4 rnds Beg with rnd 2 of pat, work even in crown lace pat **.

Rep between **'s twice more. There are 12 sts on each of the 5 dpn.

Next 8 rnds Rep (dec rnds 1–4) twice. There are 4 sts on each of the 5 dpns.

Last rnd Needle 1 K2tog, k2; Needles 2, 3, 4 and 5 Rep needle 1. There are 15 sts.

Cut yarn leaving a long tail. Pull through sts on needle once, then pull through sts once again and tighten to close the top. Fasten off. ■

16 Entrelac Pillow Covers



Shown on page 44.



Finished Measurements

Approx 17 x 17"/43 x 43cm

Materials

- 4 balls of Noro/KFI *Silk Garden Lite* in #2082 or #2092
- One pair size 6 (4mm) needles, OR SIZE TO OBTAIN GAUGE
- 18 x 18"/46 x 46cm pillow form

Gauge

- 16 sts and 24 rows = 4"/10cm over St st using size 6 (4mm) needles.

- 2 base triangles = 5"/12.5cm using size 6 (4mm) needle.

TAKE TIME TO CHECK GAUGE.

FRONT

Cast on 56 sts.

Base Triangles

*Row 1 (WS) P2, turn.

Row 2 (RS) K2, turn.

Row 3 P3, turn.

Row 4 K3, turn.

Row 5 P4, turn.

Row 6 K4, turn.

Row 7 P5, turn.

Row 8 K5, turn.

Row 9 P6, turn.

Row 10 K6, turn.

Row 11 P7, turn.

Row 12 K7, turn.

Row 13 P8, do *not* turn.

Rep from * 6 times more—7 triangles made. Turn at end of last row.

**RH Corner Triangle

Row 1 (RS) K2, turn.

Row 2 (WS) P2, turn.

Row 3 Inc in first st by knitting into front and back of st, ssk, turn.

Row 4 P3 turn.

Row 5 Inc in first st, k1, ssk, turn.

Row 6 P4, turn.

Row 7 Inc in first st, k2, ssk, turn.

Row 8 P5, turn.

Row 9 Inc in first st, k3, ssk, turn.

Row 10 P6, turn.

Row 11 Inc in first st, k4, ssk, turn.

Row 12 P7, turn.

Row 13 Inc in first st, k5, ssk, do *not* turn.

The RH corner triangle is complete. Leave 8 sts on RH needle.

RS Rectangles

*Pick up row (RS) Pick up and k 8 sts evenly along edge of next triangle/rectangle, turn.

Row 1 (WS) P8, turn.

Row 2 K7, SKP (with last st of rectangle and first st of next triangle, turn.

Rows 3–16 Rep rows 1 and 2 seven times. Do *not* turn at end of last row.

Rep from * (at Pick-up row) 5 times more—6 RH Rectangles made.

LH Corner Triangle

Pick up row (RS) Pick up and k 8 sts along edge of last triangle/rectangle, turn.

Row 1 P2tog, p6, turn.

Row 2 K7, turn.

Row 3 P2tog, p5, turn.

Row 4 K6, turn.

Row 5 P2tog, p4, turn.

Row 6 K5, turn.

Row 7 P2tog, p3, turn.

Row 8 K4, turn.

Row 9 P2tog, p2, turn.

Row 10 K3, turn.

Row 11 P2tog, p1, turn.

Row 12 K2, turn.

Row 13 P2tog, do *not* turn—1 st rem on RH needle.

WS Rectangles

Pick up row (WS) Pick up and p 7 sts evenly along edge of triangle just worked, turn.

*Row 1 (RS) K8, turn.

Row 2 P7, p2tog (with last st of rectangle and first st of next triangle/rectangle), turn.

Rows 3-16 Rep rows 1 and 2 seven times. Do *not* turn at end of last row.

Next row (WS) Pick up and p 8 sts evenly along edge of next RS rectangle.

Rep from * 6 times more—7 WS rectangles have been made. Turn.

Rep from ** (at RH Corner Triangle) until 7 LH Corner Triangles have been worked and ending with a LH Corner Triangle complete.

Do *not* turn and end of last row—1 st rem.

End Triangles

***Pick up row (WS)** Pick up and p 7 sts evenly along edge of triangle just worked—8 sts on RH needle. Turn.

Row 1 (RS) K8, turn.

Row 2 P2tog, p5, p2tog, turn.

Row 3 K7, turn.

Row 4 P2tog, p4, p2tog, turn.

Row 5 K6, turn.

Row 6 P2tog, p3, p2tog, turn.

Row 7 K5, turn.

Row 8 P2tog, p2, p2tog, turn.

Row 9 K4, turn.

Row 10 P2tog, p1, p2tog, turn.

Row 11 K3, turn.

Row 12 P2tog, p2tog, turn.

Row 13 K2, turn.

Row 14 P2tog, p2tog, pass 1st st over 2nd st—1 st

rem on RH needle.

Rep from * across row, picking up sts along edge of rectangle instead of triangle. Fasten off rem st.

Back

Cast on 72 sts. Work in St st until same length as Front. Bind off sts loosely.

Finishing

Block lightly to measurements. Sew Front and Back tog along 3 sides. Insert pillow form then sew rem side. ■

17 Entrelac Scarf



Shown on page 45.

● ● ● ○ INTERMEDIATE

Finished Measurements

8 x 48"/20.5 x 122cm

Materials

- 3 hanks of Noro/KFI *Shiraito* in #30
- One pair size 3 (3.25mm) needles, OR SIZE TO OBTAIN GAUGE

Gauge

- 24 sts and 32 rows = 4"/10cm over St st using size 3 (3.25mm) needles.
- 4 base triangles = 8"/20.5cm using size 3 (3.25mm) needle.

TAKE TIME TO CHECK GAUGE.

Stitches Used

SSP Slip 2 sts knitwise, one at a time, to right-hand needle. Insert tip of left-hand needle into back of these sts, from left to right, and purl them together.

Ridge Stitch

Row 1 (RS) Knit.

Row 2 Purl.

Ridge Row 3 Purl.

Row 4 Purl.

Rep Rows 1-4 for Ridge St.

Scarf

Cast on 32 sts.

Base Triangles

*Row 1 (WS) P2, turn.

Row 2 (RS) K2, turn.

Row 3 P3, turn.

Row 4 K3, turn.

Row 5 P4, turn.

Row 6 K4, turn.

Row 7 P5, turn.

Row 8 K5, turn.

Row 9 P6, turn.

Row 10 K6, turn.

Row 11 P7, turn.

Row 12 K7, turn.

Row 13 P8, do *not* turn.

Rep from * 3 times more—4 triangles made. Turn at end of last row.

**RH Corner Triangle

Row 1 (RS) K2, turn.

Row 2 (WS) P2, turn.

Row 3 Inc in first st by knitting into front and back of st, ssk, turn.

Row 4 P3, turn.

Row 5 Inc in first st, k1, ssk, turn.

Row 6 P4, turn.

Row 7 Inc in first st, k2, ssk, turn.

Row 8 P5, turn.

Row 9 Inc in first st, k3, ssk, turn.

Row 10 P6, turn.

Row 11 Inc in first st, k4, ssk, turn.

Row 12 P7, turn.

Row 13 Inc in first st, k5, ssk, do *not* turn.

The RH corner triangle is complete. Leave 8 sts on RH needle.

RS Rectangles

First rectangle

Pick up row (RS) Pick up and k 8 sts evenly along edge of next triangle, turn.

Row 1 (WS) P8, turn.

Row 2 K7, SKP (with last st of rectangle and first st of next triangle, turn.

Rows 3-16 Rep rows 1 and 2 seven times. Do *not* turn at end of last row.

Second rectangle

Pick up row (RS) Pick up and k 8 sts evenly along

edge of next rectangle, turn.

Row 1 (WS) P8 (this is row 2 of ridge pat), turn.

Row 2 P7, ssp (with last st of rectangle and first st of next rectangle), turn.

Rows 3-16 Rep rows 1 and 2 seven times, keeping in ridge pat as established and working SKP dec on knit rows and ssp dec on purl rows. Do not turn at end of last row.

Third Rectangle

Work same as First Rectangle, picking up along rectangle instead of triangle RS rectangles have been worked.

LH Corner Triangle

Pick up row (RS) Pick up and k 8 sts along edge of last triangle/rectangle, turn.

Row 1 P2tog, p6, turn.

Row 2 K7, turn.

Row 3 P2tog, p5, turn.

Row 4 K6, turn.

Row 5 P2tog, p4, turn.

Row 6 K5, turn.

Row 7 P2tog, p3, turn.

Row 8 K4, turn.

Row 9 P2tog, p2, turn.

Row 10 K3, turn.

Row 11 P2tog, p1, turn.

Row 12 K2, turn.

Row 13 P2tog, do not turn—1 st rem on RH needle.

WS Rectangles

Pick up row (WS) Pick up and p 7 sts evenly along edge of triangle just worked, turn.

*Row 1 (RS) K8, turn.

Row 2 P7, p2tog (with last st of rectangle and first st of next triangle/rectangle), turn.

Rows 3-16 Rep rows 1 and 2 seven times. Do not turn at end of last row.

Next row (WS) Pick up and p 8 sts evenly along edge of next RS rectangle.

Rep from * across row—4 WS rectangles have been worked. Turn.

Rep from ** (at RH Corner Triangle) until 27 LH Corner Triangles have been worked and ending with a LH Corner Triangle complete.

Do not turn and end of last row—1 st rem.

End Triangles

*Pick up row (WS) Pick up and p 7 sts evenly along edge of triangle just worked—8 sts on RH needle. Turn.

Row 1 (RS) K8, turn.

Row 2 P2tog, p5, p2tog, turn.

Row 3 K7, turn.

Row 4 P2tog, p4, p2tog, turn.

Row 5 K6, turn.

Row 6 P2tog, p3, p2tog, turn.

Row 7 K5, turn.

Row 8 P2tog, p2, p2tog, turn.

Row 9 K4, turn.

Row 10 P2tog, p1, p2tog, turn.

Row 11 K3, turn.

Row 12 P2tog, p2tog, turn.

Row 13 K2, turn.

Row 14 P2tog, p2tog, pass 1st st over 2nd st—1 st rem on RH needle.

Rep from * across row, picking up sts along edge of rectangle instead of triangle. Fasten off rem st. ■

18 Entrelac Poncho



One size fits all. Shown on page 46.

● ● ● ○ INTERMEDIATE

Finished Measurements

- Width 33"/84cm
- Length 23½"/59.5cm

Materials

- 8 skeins of Noro/KFI Silk Garden Solo in #4 (A)
- 1 skein of Noro/KFI Silk Garden Sock in #S354 (B)
- One pair each sizes 4 and 8 (3.5 and 5mm) needles, OR SIZE TO OBTAIN GAUGE
- One size 8 (5mm) circular needle 32"/80cm long
- One each sizes 5 and 6 (3.75 and 4mm) circular needles 16"/40cm long
- Stitch holder and stitch marker

Gauges

- 15 sts and 22 rows = 4"/10cm over St st using size 8 (5mm) needles and A.

- Center Front Panel (3 base triangles) = approx 7½"/19cm wide using size 4 (3.5mm) needles and B.

TAKE TIME TO CHECK GAUGES.

Note

The Center Front Panel and turtleneck are worked with color B. All rem pieces and edges are worked with color A.

Center Front Panel

With size 4 (3.5mm) needles and B, cast on 27 sts.

Base Triangles

Base Triangles

*Row 1 (WS) P2, turn.

Row 2 (RS) K2, turn.

Row 3 P3, turn.

Row 4 K3, turn.

Row 5 P4, turn.

Row 6 K4, turn.

Row 7 P5, turn.

Row 8 K5, turn.

Row 9 P6, turn.

Row 10 K6, turn.

Row 11 P7, turn.

Row 12 K7, turn.

Row 13 P8, turn.

Row 14 K8, turn.

Row 15 P9, do not turn.

Rep from * twice more—3 triangles made. Turn at end of last row.

**RH Corner Triangle

Row 1 (RS) K2, turn.

Row 2 (WS) P2, turn.

Row 3 Inc in first st by knitting into front and back of st, ssk, turn.

Row 4 P3, turn.

Row 5 Inc in first st, k1, ssk, turn.

Row 6 P4, turn.

Row 7 Inc in first st, k2, ssk, turn.

Row 8 P5, turn.

Row 9 Inc in first st, k3, ssk, turn.

Row 10 P6, turn.

Row 11 Inc in first st, k4, ssk, turn.

Row 12 P7, turn.

Row 13 Inc in first st, k5, ssk, turn.

Row 14 P8, turn.

Row 15 Inc in first st, k6, ssk, do not turn.

The RH corner triangle is complete. Leave 9 sts on RH needle

RS Rectangles

***Pick up row (RS)** Pick up and k 9 sts evenly along edge of next triangle/rectangle, turn.

Row 1 (WS) K9, turn.

Row 2 P4, yo, k1, yo, p3, p2tog (with last st of rectangle and first st of next triangle/rectangle), turn.

Row 3 K4, p3, k4, turn.

Row 4 P4, k1, yo, k1, yo, k1, p3, p2tog, turn.

Row 5 K4, p5, k4, turn.

Row 6 P4, k2, yo, k1, yo, k2, p3, p2tog, turn.

Row 7 K4, p7, k4, turn.

Row 8 P4, k3, yo, k1, yo, k3, p3, p2tog, turn.

Row 9 K4, p9, k4, turn.

Row 10 P4, ssk, k5, k2tog, p3, p2tog, turn.

Row 11 K4, p7, k4, turn.

Row 12 P4, ssk, k3, k2tog, p3, p2tog, turn.

Row 13 K4, p5, k4, turn.

Row 14 P4, ssk, k1, k2tog, p3, p2tog, turn.

Row 15 K4, p3, k4, turn.

Row 16 P4, SK2P, p3, p2tog, turn.

Row 17 K9, turn.

Row 18 P8, p2tog, do *not* turn.

Rep from * across row—2 RS rectangles have been worked.

LH Corner Triangle

Pick up row (RS) Pick up and k 9 sts along edge of last triangle/rectangle, turn.

Row 1 P2tog, p7, turn.

Row 2 K8, turn.

Row 3 P2tog, p6, turn.

Row 4 K7, turn.

Row 5 P2tog, p5, turn.

Row 6 K6, turn.

Row 7 P2tog, p4, turn.

Row 8 K5, turn.

Row 9 P2tog, p3, turn.

Row 10 K4, turn.

Row 11 P2tog, p2, turn.

Row 12 K3, turn.

Row 13 P2tog, p1, turn.

Row 14 K2, turn.

Row 15 P2tog, do *not* turn—1 st rem on RH needle.

WS Rectangles

Pick up row (WS) Pick up and p 8 sts evenly along edge of triangle just worked, turn—9 sts on RH needle.

***Row 1 (RS)** P4, yo, k1, yo, p4, turn.

Row 2 K4, p3, k3, k2tog (with last st of rectangle and first st of next triangle/rectangle), turn.

Row 3 P4, k1, yo, k1, yo, k1, p4.

Row 4 K4, p5, k3, k2tog.

Row 5 P4, k2, yo, k1, yo, k2, p4.

Row 6 K4, p7, k3, k2tog.

Row 7 P4, k3, yo, k1, yo, k3, p4.

Row 8 K4, p9, k3, k2tog.

Row 9 P4, ssk, k5, k2tog, p4.

Row 10 K4, p7, k3, k2tog.

Row 11 P4, ssk, k3, k2tog, p4.

Row 12 K4, p5, k3, k2tog.

Row 13 P4, ssk, k1, k2tog, p4.

Row 14 K4, p3, k3, k2tog.

Row 15 P4, SK2P, p4.

Row 16 K8, k2tog.

Row 17 P9.

Row 18 K8, k2tog, do *not* turn.

Next row (WS) Pick up and p 9 sts evenly along edge of next RS rectangle.

Rep from * across row—3 WS rectangles have been worked. Turn.

****Work a RH corner triangle.**

Work a row of RS Rectangles. Do *not* turn.

Work a LH corner triangle.

Work a row of WS Rectangles.

Rep from ** until 7 LH Corner Triangles have been worked—1 st rem on the needle. Do *not* turn.

End Triangles

***Pick up row (WS)** Pick up and p 8 sts evenly along edge of triangle just worked—9 sts on RH needle. Turn.

Row 1 (RS) K9, turn.

Row 2 P2tog, p6, p2tog, turn.

Row 3 K8, turn.

Row 4 P2tog, p5, p2tog, turn.

Row 5 K7, turn.

Row 6 P2tog, p4, p2tog, turn.

Row 7 K6, turn.

Row 8 P2tog, p3, p2tog, turn.

Row 9 K5, turn.

Row 10 P2tog, p2, p2tog, turn.

Row 11 K4, turn.

Row 12 P2tog, p1, p2tog, turn.

Row 13 K3, turn.

Row 14 P2tog, p2tog, turn.

Row 15 K2, turn.

Row 16 P2tog, p2tog, pass 1st st over 2nd st—1 st rem on RH needle.

Rep from * across row, picking up sts along edge of rectangle instead of triangle. Fasten off rem st.

Left Front Strip

With size 8 (5mm) needles and A, cast on 42 sts. Work in St st for approx 20"/50.5cm, or until piece

measures the same length as the Center Front Panel. Bind off sts.

Right Front Strip

Work same as for Left Front Strip.

Back

With size 8 (5mm) needles and A, cast on 118 sts.

Work in St st until same length as Front Strips.

Bind off 42 sts at beg of next 2 rows for shoulders.

Place rem 34 sts on a holder for back neck.

Finishing

Block pieces to measurements.

Sew Center Front Panel between 2 Front Strips. Sew shoulder seams.

Side rib section

With RS facing, size 8 (5mm) circular needle and A, pick up and k 146 sts along side edge.

Next row (WS) P2, *k2, p2; rep from * to end.

Next row (RS) K2, *p2, k2; rep from * to end.

Rep last 2 rows for k2, p2 rib for 8 rows more. Bind off loosely in rib.

Lower edge rib for back

With RS facing, size 8 (5mm) circular needle and A, pick up and k 128 sts along edge cast-on edge of back, including sides of rib section.

Next row (WS) P3, *k2, p2; rep from *, end last rep p3.

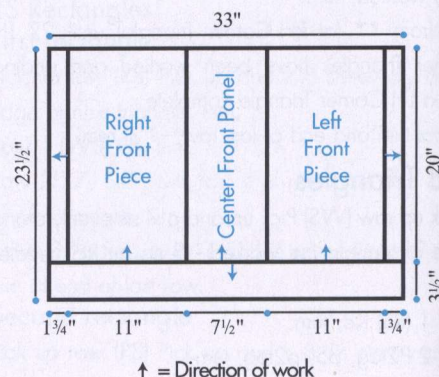
Next row (RS) K3, *p2, k2; rep from *, end last rep k3. Rep last 2 rows for k2, p2 rib for 18 rows more. Bind off loosely in rib.

Lower edge rib for front

Work as for Back rib.

Turtleneck

With RS facing, size 5 (3.75mm) circular needle and B, pick up and k 80 sts evenly around neck edge. Join to work in rnds and place marker for beg of rnd. Work in k2, p2 rib for 4"/10cm. Change to size 6 (4mm) circular needle work in k2, p2 rib for 5"/12.5cm more. Bind off loosely in rib. ■



19 Cropped Tank



Sized for XX-Small (X-Small, Small, Medium/Large) and shown in size XX-Small on page 48.

●●○○ EASY

Finished Measurements

- Bust 23½ (27, 30, 33½)"/59.5 (68.5, 76, 85)cm
- Length 15 (15½, 16, 16¾)"/38 (39.5, 40.5, 42.5)cm

Materials

- 3 (4, 4, 5) skeins of Noro Tokonatsu in #16
- One pair each sizes 6 and 7 (4 and 4.5mm) needles OR SIZE TO OBTAIN GAUGE
- One size 6 (4mm) circular needle, 24"/60cm long

Gauge

19 sts and 26 rows = 4"/10cm over St st using larger needles.

TAKE TIME TO CHECK GAUGE.

Eyelet Pattern Band

(over a multiple of 8 sts)

Row 1 (RS) Knit.

Row 2 and all WS rows Purl.

Row 3 K3, *yo, ssk, k6; rep from *, end last rep k3 instead of k6.

Row 5 K1, *k2tog, yo, k1, yo, ssk, k3; rep from *, end last rep k2 instead of k3.

Row 7 Rep row 3.

Row 8 Purl.

These 8 rows form the Eyelet Pat Band.

Back

With smaller needles, cast on 57 (65, 73, 81) sts.

Work in k1, p1 rib for 4"/10cm, end with a RS row. Change to larger needles. Purl next row on WS, and dec 1 st at end of row—56 (64, 72, 80) sts.

Eyelet Pat Band

Work rows 1–8 of Eyelet Pat Band.

Cont in St st (k on RS, p on WS) until piece measures 8 (8¼, 8½, 8¾)"/20.5 (21, 21.5, 22)cm from beg.

Armhole shaping

Bind off 2 (3, 4, 5) sts at beg of next 2 rows.

Dec 1 st each side every other row 2 (3, 4, 5) times—48 (52, 56, 60) sts. Work even until armhole measures 2 (2¼, 2½, 3)"/5 (6, 6.5, 7.5)cm.

Neck shaping

Next row (RS) K12 (14, 16, 18), join a 2nd ball of yarn and bind off center 24 sts, k to end.

Working both sides at once, bind off 3 (4, 4, 5) sts from each neck edge once, 2 (2, 3, 3) sts once then dec 1 st each side every RS row 1 (2, 2, 3) times—6 (6, 7, 7) sts each side. Work even until armhole measures 7 (7¼, 7½, 8)"/18 (18.5, 19, 20.5)cm. Bind off sts each side for shoulder straps.

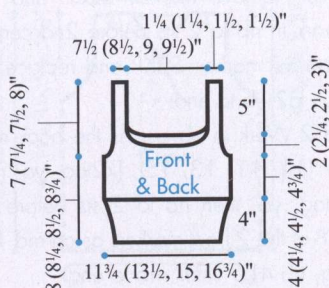
FRONT

Work as for back until armhole shaping is complete, end with a WS row. Armhole measures approx 1 (1¼, 1½, 1¾)"/2.5 (3, 4, 5) cm.

Neck shaping

Next row (RS) K16 (18, 20, 22), join a 2nd ball of yarn and bind off center 16 sts, k to end.

Working both sides at once, bind off 4 (5, 5, 6) sts from each neck edge once, 3 sts once, 2 sts 1 (1, 2, 2) times, then dec 1 st each side every RS row 1 (2, 1, 2) times—6 (6, 7, 7) sts rem each side. Work even until armhole measures 7 (7¼, 7½, 8)"/18 (18.5, 19, 20.5)cm. Bind off sts each side for shoulder straps.



Finishing

Sew right shoulder seam.

Neckband

With RS facing and circular needle, pick up and k 100 (104, 106, 110) sts evenly around front neck edge and 83 (87, 89, 93) sts evenly around back neck edge—183 (191, 195, 203) sts. Work in k1, p1 rib for 2 rows. Bind off in rib.

Sew left shoulder and neckband seam.

Armhole trim

With RS facing and smaller needles, pick up and k (69, 71, 77) sts evenly around each armhole edge. Work in k1, p1 rib for 2 rows. Bind off in rib.

Sew side seams, including armhole trim. ■

20 Lace-Up Shell



Sized for Small (Medium, Large, X-Large, XX-Large) and shown in size Small on page 49.

●●●○ INTERMEDIATE

Finished Measurements

- Bust 33 (34½, 36, 39½, 41)"/84 (87.5, 91.5, 100, 104)cm
- Length 24 (24½, 24½, 25, 25½)"/61 (62, 62, 63.5, 65)cm

Materials

- 2 (2, 3, 3, 3) skeins of Noro Kibou in #1
- One pair size 7 (4.5mm) needles OR SIZE TO OBTAIN GAUGE
- One size 7 (4.5mm) circular needle, 16"/40cm long
- Removeable stitch markers
- Approx 2yd/2m of ⅛"/3mm wide leather lacing

Gauge

19 sts and 26 rows 4"/10cm over St st using size 7 (4.5mm) needles.

TAKE TIME TO CHECK GAUGE.

Note

Work 1 st in garter st (knit every row) at each seam edge for selvage st. These sts are not figured into the finished measurements.

Back

Cast on 80 (84, 88, 96, 100) sts. Work in k2, p2 rib for 4 rows.

Cont in St st (k on RS, p on WS) until piece measures 2"/5cm from beg, end with a WS row.

Dec row (RS) K1, SKP, k to the last 3 sts, k2tog, k1. Rep dec row every 8th row twice more, then every 6th row twice—70 (74, 78, 86, 90) sts.

Work even until piece measures 9"/23cm from beg.

Inc row (RS) K1, M1, k to the last st, M1, k1.

Rep inc row every 8th row twice more then every 6th row twice—80 (84, 88, 96, 100) sts.

Work even until piece measures 14½"/37cm from beg.

Armhole shaping

Bind off 3 (4, 4, 5, 5) sts at beg of next 2 rows, then bind off 2 sts at beg of next 4 (4, 4, 6, 6) rows.

Dec row (RS) K1, SKP, k to the last 3 sts, k2tog, k1. Rep dec row every other row 1 (1, 2, 1, 1) times more—62 (64, 66, 70, 74) sts.

Work even until armhole measures 8½ (9, 9, 9½, 10)"/21.5 (23, 23, 24, 25.5)cm.

Shoulder shaping

Bind off 4 (4, 4, 5, 5) sts at beg of next 6 (4, 2, 8, 4) rows, 5 (5, 5, 0, 6) sts at beg of next 2 (4, 6, 0, 4) rows.

Bind off rem 28 (28, 28, 30, 30) sts for back neck.

Front

Work as for back through the armhole shaping.

Neck shaping

Next row (RS) K25 (26, 27, 28, 30), join a 2nd ball of yarn and bind off center 12 (12, 12, 14, 14) sts, k to end.

Working both sides at once, work even for 3 rows.

Neck dec row (RS) K to the last 3 sts of first side, k2tog, k1; on 2nd side k1, SKP, k to end.

Rep the neck dec row every 4th row 7 times more—17 (18, 19, 20, 22) sts rem each side.

Work even until armhole measures same as back.

Shoulder shaping

Bind off 4 (4, 4, 5, 5) sts from each shoulder edge 3 (2, 1, 4, 2) times, 5 (5, 5, 0, 6) sts 1 (2, 3, 0, 2) times.

Finishing

Sew shoulder seams.

Armhole bands

With RS facing, pick up and k 78 (82, 82, 86, 90) sts evenly around each armhole edge.

Work in k2, p2 rib for 3 rows.

Bind off in rib.

Sew side seams, including armhole bands.

Neckband

With RS facing and circular needle, pick up and k 28 (28, 28, 30, 30) sts along back neck edge, 38 (40, 40, 42, 44) sts along left front neck edge, pm, 12 (12, 12, 14, 14) sts along center front bound-off edge, pm, 38 (40, 40, 42, 44) sts along right front neck edge—116 (120, 120, 128, 132) sts. Join and pm for beg of rnd.

Rnd 1 Work in k2, p2 rib to 2 sts before first center front marker, remove marker, S2KP and replace marker, work in rib to 2 sts before 2nd center front marker, remove marker, S2KP and replace marker, work in k2, p2 rib to end.

Eyelet rnd 2 Work in rib across the back neck sts, then rib 9 (11, 11, 13, 15), [k2tog, yo, rib 4] 4 times, k2tog, yo, then rib to 2 sts before marker, work S2KP at the 2 front markers as on rnd 1, rib 1, [yo, k2tog, rib 4] 5 times, rib to end.

Rnd 3 Rep rnd 1.

Bind off in rib. Thread the leather lacing through the eyelets as shown in photo. ■

21 Crossover Vest



Sized for Small (Medium, Large, X-Large, XX-Large) and shown in size Medium on page 50.

● ● ● ● EXPERIENCED

Finished Measurements

- Bust 36½ (38½, 41¼, 42½, 45)"/92.5 (98, 104.5, 108, 114)cm
- Length 22¼ (22¼, 22¾, 23¼, 23¼)"/56.5 (56.5, 58, 59, 59)cm

Materials

- 3 (3, 4, 4, 5) skeins of Noro Taiyo in #60
- One pair size 8 (5mm) needles OR SIZE TO OBTAIN GAUGE
- One size 8 (5mm) circular needle, 29"/74cm long
- Stitch markers
- Stitch holders or waste yarn

Gauge

13 sts and 28 rows/rnds = 4"/10cm over fisherman's rib pat using size 8 (5mm) needles.

TAKE TIME TO CHECK GAUGE.

Fisherman's Rib Pattern

(worked in rows over an odd number of sts)

Set-up row (RS) Knit.

Row 1 (WS) Purl.

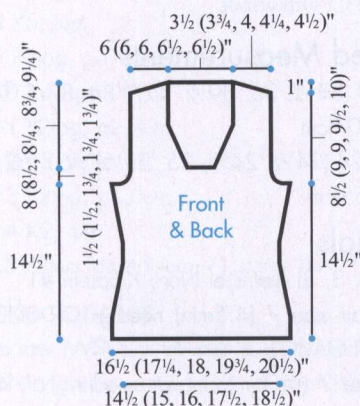
Row 2 P1, *k1B (k1 st in the row below the st on needle), p1; rep from * to end.

Rep rows 2 and 3 for fisherman's rib pat worked in rows.

Fisherman's Rib Pattern

(worked in rnds over an even number of sts)

Rnd 1 Knit.



Rnd 2 *P1, K1B; rep from * around.

Rep rnds 1 and 2 for fisherman's rib pat worked in rnds.

Note

Vest is worked from the shoulder edge down to the hem with the bodice worked in 3 segments, then joined at the underarm to work the body in rnds.

Right Front

Beg at the shoulder, cast on 4 (6, 8, 8, 10) sts.

Row 1 (WS) Purl.

Row 2 (RS) Cast on 7 sts, k to end—11 (13, 15, 15, 17) sts.

Row 3 Purl.

Row 4 Work row 2 of Fisherman's rib pat.

Row 5 Purl.

Neck inc row 6 (RS) Work in rib to the last 2 sts, pm, M1, rib to end.

Row 7 Purl.

Note Read before cont to knit.

Neck inc row 8 Work in rib to the marker, sl marker, M1 p-st, rib to end—13 (15, 17, 17, 19) sts.

Cont to shape neck by alternating neck inc rows 6 and 8 every 4th row 12 (12, 13, 14, 14) times more, AT SAME TIME, when there are 27 (27, 31, 35, 35) rows from beg—armhole measures approx 4 (4, 4½, 5, 5)"/10 (10, 11.5, 12.5, 12.5)cm, shape the armhole edge as foll:

Armhole inc row 1 (RS) Work 2 sts, pm, M1 p-st, work to end of row, working inc at neck edge if necessary. Work 3 rows even.

Armhole inc row 2 (RS) Work 2 sts, sl marker, M1, work to end of row working inc at neck edge if necessary. Work 3 rows even.

Cont in this way to alternate armhole inc rows 1 and 2 every 4th row twice more, then every 2nd row 6 times. AT SAME TIME, cont neck incs as established. After all shaping is complete, there are 10 armhole increases and 14 (14, 15, 16, 16) neck increases for a total of 35 (37, 40, 41, 43) sts. Lay piece aside.

Left Front

Beg at the shoulder, cast on 4 (6, 8, 8, 10) sts.

Row 1 (RS) Knit.

Row 2 (WS) Cast on 7 sts, purl to end—11 (13, 15, 15, 17) sts.

Row 3 Work row 2 of Fisherman's rib pat.

Row 4 Purl.

Neck inc row 5 (RS) K2, M1, pm, work in rib to end of row.

Row 6 Purl.

Neck inc row 7 Rib to marker, M1 p-st, sl marker, work to end of row. Then, cont to shape neck by alternating neck inc rows 5 and 7 only cont to work the inc's every 4th row 12 (12, 13, 14, 14) times more, when there are 27 (27, 31, 35, 35) rows from beg—armhole measures approx 4 (4, 4½, 5, 5)"/10 (10, 11.5, 12.5, 12.5)cm, shape the armhole as foll:

Armhole inc row 1 (RS) Work to the last 2 sts, working the inc at the neck edge if necessary, M1, pm, work 2 sts.

Work 3 rows even.

Armhole inc row 2 (RS) Work to the armhole marker, working the inc at the neck edge if necessary, M1 p-st, sl marker work 2 sts.

Work 3 rows even.

Cont in this way to alternate armhole inc rows 1 and 2 every 4th row twice more, then every 2nd row 6 times. AT SAME TIME, cont neck incs as established. After all shaping is complete, there are 10 armhole increases and 14 (14, 15, 16, 16) neck increases for a total of 35 (37, 40, 41, 43) sts. Lay piece aside.

Back

Cast on 4 (6, 8, 8, 10) sts for the right shoulder.

Row 1 (WS) Purl.

Row 2 (RS) Cast on 7 sts, k to end—11 (13, 15, 15, 17) sts.

Lay piece aside.

Then, cast on 4 (6, 8, 8, 10) sts for the left shoulder.

Row 1 (RS) Knit.

Row 2 (WS) Cast on 7 sts, p to end—11 (13, 15, 15, 17) sts.

Then cast on 17 (17, 17, 19, 19) sts at end of nee-

dle for the neck and cut yarn.

Join the shoulders

Next row (WS) Purl the right shoulder sts, p the cast-on neck sts, purl the left shoulder sts—39 (43, 47, 49, 53) sts.

Beg with row 2, work in Fisherman's rib pat until there are 27 (27, 31, 35, 35) rows along the armhole edge. Then shape the armhole as foll:

Armhole inc row (RS) Work 2 sts, pm, M1 p-st, work to the last 2 sts, M1 p-st, pm, work 2 sts.

Cont to inc at the armhole edges (alternating M1 and M1 p-st sts) every 6th row once, every 4th row 3 times then every 2nd row 3 times—55 (59, 63, 65, 69) sts, end with a WS row.

Body

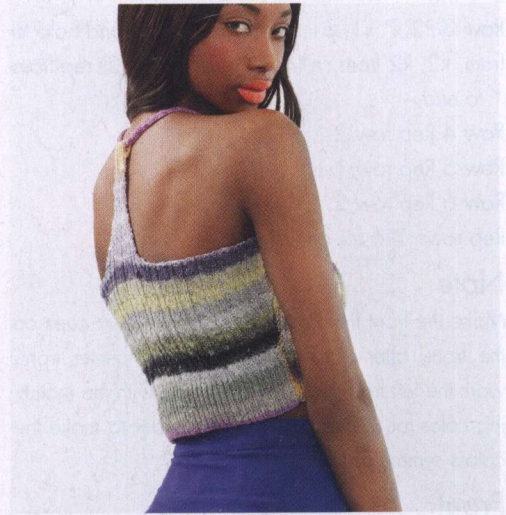
Change to circular needle.

Next row (RS) Return to the 2 front pieces and working across the right front sts first, work in rib to the last 13 (13, 15, 15, 15) sts, then with the left front sts behind these sts on a needle with the tips parallel, work 1 st from front needle tog with 1 st from back needle 13 (13, 15, 15, 15) times, work to end of left front, cast on 3 sts for underarm, work across the 55 (59, 63, 65, 69) sts of back, cast on 3 sts for underarm, join and pm to mark the beg of rnd. There are 118 (126, 134, 138, 146) sts. Join to work in rnds, placing marker for beg of rnd. Work in Fisherman's rib pat in rnds for 14"/35.5cm. Bind off.

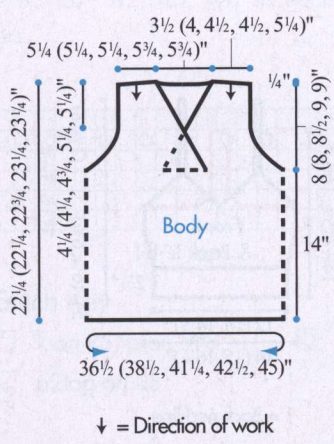
Finishing

Sew shoulder seams. Block lightly, if desired. ■

22 Racer Back Top



Sized for Small (Medium, Large) and shown in size Small on page 51.



●●●○ INTERMEDIATE

Finished Measurements

- Bust 28 (30, 32½)/71 (76, 82.5)cm
- Length (from center back with strap folded) 14½ (15½, 16½)/37 (39.5, 42)cm

Materials

- 2 (2, 3) skeins of Noro Taiyo Sock in #S30
- One pair size 2 (2.75mm) needles OR SIZE TO OBTAIN GAUGE
- Two size 2 (2.75mm) dpn for I-cord strap
- Cable needle (cn)
- Small stitch holder or safety pin

Gauge

34 sts and 36 rows = 4"/10cm over cable pat using size 2 (2.75mm) needles.
TAKE TIME TO CHECK GAUGE.

3-Needle Bind-Off

1. Hold right sides of pieces together on two needles. Insert third needle knitwise into first st of each needle, and wrap yarn knitwise.
2. Knit these two sts together, and slip them off the needles. *Knit the next two sts together in the same manner.
3. Slip first st on 3rd needle over 2nd st and off needle. Rep from * in step 2 across row until all sts are bound off.

Cable Pattern

(over a multiple of 10 sts plus 2)

Row 1 (RS) P2, *k1, p1, k4, p1, k1, p2; rep from * to end.

Row 2 *K2, p1, k1, p4, k1, p1; rep from *, end k2.

Row 3 P2, * k1, p1, sl next 2 sts to cn and hold to front, k2, k2 from cn (4-st LC), p1, k1, p2; rep from * to end.

Row 4 Rep row 2.

Row 5 Rep row 1.

Row 6 Rep row 2.

Rep rows 1–6 for cable pat.

Note

Make the front first. When working the two cups on the front, after dividing the sts at the center front, work the left front cup first. Then beg with the matching color for the right front cup in order to make the colors symmetrical.

Front

Cast on 98 (106, 114) sts. Work in k1, p1 rib for

2¾"/7cm, inc 4 (6, 8) sts evenly across the last WS row—102 (112, 122) sts.

Beg cable pat

Work in cable pat for 4 (6, 8) rows.

Inc 1 st each side on next row and rep inc every 4th row 7 times more (working inc sts into cable pat)—118 (128, 138) sts.

Work even until piece measures 8½ (9, 9½)/21.5 (23, 24)cm from beg, dec 0 (2, 0) sts on last WS row—118 (126, 138) sts.

Armhole shaping

Note The armhole shaping will take place simultaneously with the neck shaping to form the cups

Left Front Cup

Row 1 (RS) Work 59 (63, 69) sts in pat, turn, leaving rem sts on hold for the right front cup.

Dec row 1 (WS) P2tog, work to the last 2 sts, p2tog.

Dec row 2 (RS) K2tog, work to the last 2 sts, k2tog. Rep the last 2 rows until there are 5 sts, end with a WS row.

I-cord strap

Sl the 5 sts to a dpn to work next row from the RS.

***Row 1 (RS)** Knit. Without turning work, slide the sts back to the opposite end of needle to work next row from RS. Pull yarn tightly from the end of the row. Rep from * until I-cord measures 7 (7½, 8)/18 (19, 20.5)cm.

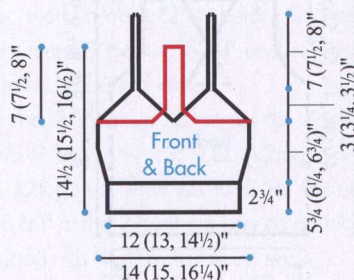
Sl sts to a small st holder or safety pin

Right Front Cup

Rejoin yarn at the center front from the RS.

Row 1 (RS) Pick up 1 st from the center left cup edge and work this st tog with first st of the right front cup (to tighten the joining at the center front), then work to end of row.

Dec row 1 (WS) P2tog, work in pat to the last 2 sts, p2tog.



I = Back neckline

Dec row 2 (RS) K2tog, work in pat to the last 2 sts, k2tog.

Rep these 2 rows until 5 sts rem.

Work the I-cord strap as for the left front cup.

Using the 3-needle bind-off, join the 2 straps tog to close the strap.

Back

Work as for front until piece measures 8½ (9, 9½)/21.5 (23, 24)cm from beg.

Armhole shaping

Bind off 42 (47, 52) sts at beg of next 2 rows—34 sts.

Dec row 1 (RS) K2tog, work to last 2 sts, k2tog.

Dec row 2 (WS) P2tog, work to last 2 sts, p2tog.

Work dec row 1 on next RS row, then every other row (working WS rows even) until 14 (12, 14) sts.

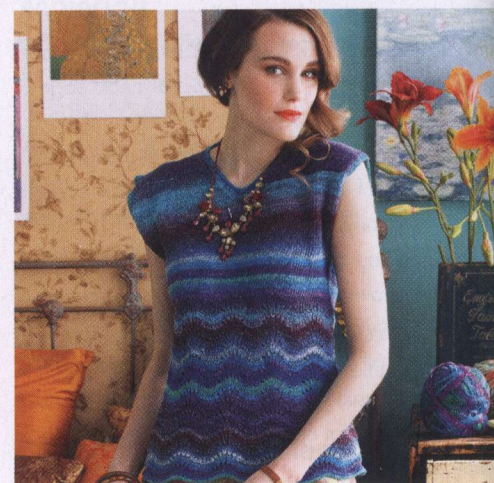
Work even on these sts until armhole measures 7 (7½, 8)/18 (19, 20.5)cm from the first armhole bind-off for the center back strap.

Bind off rem sts.

Finishing

Sew side seams. Fold the top 1"/2.5cm of center back strap over the I-cord strap and firmly seam in place. ■

23 Sleeveless Top



Sized for Small (Medium, Large, X-Large, XX-Large) and shown in size Small on pages 52 and 53.

●●●○ EASY

Finished Measurements

- Bust 34 (38, 42, 45, 48)/86.5 (96.5, 106.5, 114, 122)cm
- Length 23½ (24, 24½, 24½)/59.5 (61, 61, 62, 62)cm

Materials

- 2 (3, 3, 3, 3) skeins of Noro/KFI *Taiyo Sock* in #S3
- One each sizes 5 and 6 (3.75 and 4mm) circular needles, 32"/80cm long OR SIZE TO OBTAIN GAUGE
- Size 4 (3.5mm) circular needle, 16"/40cm long
- Stitch markers
- Stitch holders

Gauges

- 24 sts and 32 rnds = 4"/10cm over lace pat using size 6 (4mm) needle.
 - 24 sts and 36 rnds/rows = 4"/10cm over St st using size 5 (3.75mm) needle.
- TAKE TIME TO CHECK GAUGES.

Short Row Wrap & Turn (w&t)

on RS row (on WS row)

- 1) Wyib (wyif), sl next st purlwise.
- 2) Move yarn between the needles to the front (back).
- 3) Sl the same st back to LH needle. Turn work. One st is wrapped.
- 4) When working the wrapped st, insert RH needle under the wrap and work it tog with the corresponding st on needle.

3-Needle Bind-Off

1. Hold right sides of pieces together on two needles. Insert third needle knitwise into first st of each needle, and wrap yarn knitwise.
2. Knit these two sts together, and slip them off the needles. *Knit the next two sts together in the same manner.
3. Slip first st on 3rd needle over 2nd st and off needle. Rep from * in step 2 across row until all sts are bound off.

Lace Pattern

(over multiple of 18 sts)

Rnds 1–4 Knit.

Rnd 5 * [P2tog] 3 times, [k1, yo] 6 times, [p2tog] 3 times; rep from * around.

Rnd 6 Knit.

Rep rnds 1–6 for chevron pat.

Notes

- 1) Body is worked in the round to the underarm, then front and back are worked back and forth in rows to the shoulder.
- 2) Lace pat may be worked from chart or text.

Body

With size 5 (3.75mm) needle, cast on 216 (234, 252, 270, 288) sts. Join, taking care not to twist sts, and place marker (pm) for beg of rnd. [Knit 1 rnd, purl 1 rnd] twice.

Change to size 6 (4mm) needle.

Beg lace pat

Rnd 1 Work 18-st rep of lace pat 12 (13, 14, 15, 16) times around.

Cont to work lace pat in this way until rnds 1–6 of lace pat have been worked 15 times.

Change to size 5 (3.75mm) needle.

For size Small only

Dec rnd [K2tog, k16] 12 times—204 sts.

For size Medium only

Dec rnd [K2tog, k37] 6 times—228 sts.

For all sizes

Work in St st (k every rnd) until piece measures 15"/38cm from beg—204 (228, 252, 270, 288) sts.

Divide for armholes

Next rnd K102 (114, 126, 135, 144) sts for back, turn, leaving rem sts on hold for front.

Cont in St st (k on RS, p on WS) over back sts until armhole measures 8 (8½, 8½, 9, 9)"/20.5 (21.5, 21.5, 23, 23)cm, end with a RS row.

Short row shoulder shaping

Short row 1 Purl to last 11 (12, 14, 15, 16) sts, w&t.

Short row 2 K to last 11 (12, 14, 15, 16) sts, w&t.

Short row 3 P to last 22 (24, 28, 30, 32) sts, w&t.

Short row 4 K to last 22 (24, 28, 30, 32) sts, w&t.

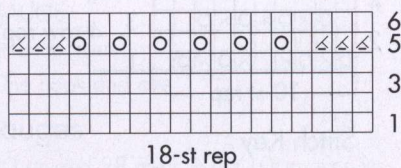
Short row 5 P to last 33 (37, 42, 45, 49) sts, w&t.

Short row 6 K to last 33 (37, 42, 45, 49) sts, w&t.

Short row 6 Purl to end of row, picking up wraps.

Next row K33 (37, 42, 45, 49), bind off center 36 (40, 42, 45, 46) sts, k to end, picking up wraps.

Place 33 (37, 42, 45, 49) sts each side on st holders.



Stitch Key

□ k on RS, p on WS

◻ yo

◻ p2tog on RS

Front

Rejoin yarn to sts on hold for front ready to work a RS row.

Work in St st until armhole measures 4"/10cm, end with a WS row.

Front neck shaping

Next row (RS) K50 (56, 62, 66, 71) sts and place on st holder for left front, bind off 2 (2, 2, 3, 2) sts, k to end.

Working on right front sts only, work as foll:

Next row (WS) Purl.

Next row (RS) K2, ssk, k to end—1 st dec'd.

Rep last 2 rows 16 (18, 19, 20, 21) times more—33 (37, 42, 45, 49) sts.

Work even, if necessary, until armhole measures 8 (8½, 8½, 9, 9)"/20.5 (21.5, 21.5, 23, 23)cm, end with a WS row.

Short row shoulder shaping

Short row 1 (RS) K to last 11 (12, 14, 15, 16) sts, w&t, p to end of row.

Short row 2 K to last 22 (24, 28, 30, 32) sts, w&t, p to end of row.

Next row K to end, picking up wraps.

Place sts on st holder for right shoulder.

Left Front

Note For matching fronts, rejoin yarn at same point in color sequence as right front.

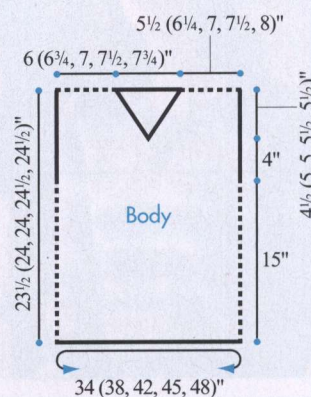
Rejoin yarn to sts on hold for left front ready to work a WS row.

Next row (WS) Purl.

Next row (RS) K to last 4 sts, k2tog, k2—1 st dec'd.

Rep last 2 rows 16 (18, 19, 20, 21) times more—33 (37, 42, 45, 49) sts.

Work even, if necessary, until armhole measures 8 (8½, 8½, 9, 9)"/20.5 (21.5, 21.5, 23, 23)cm, end with a RS row.



Short row shoulder shaping

Short row 1 (WS) P to last 11 (12, 14, 15, 16) sts, w&t, k to end of row.

Short row 2 P to last 22 (24, 28, 30, 32) sts, w&t, k to end of row.

Next row P to end, picking up wraps. Place sts on st holder for left shoulder.

Finishing

Join shoulders using 3-needle bind-off.

Neckband

With RS facing and size 4 (3.5mm) circular needle, beg at right shoulder seam, pick up and k 1 st at seam, 36 (40, 42, 45, 46) sts along back neck edge, 1 st at seam, 26 (29, 29, 32, 32) sts along left front neck edge, pm, 2 (2, 2, 3, 2) sts along center front bound-off sts, 26 (29, 29, 32, 32) sts along right front neck edge—98 (102, 104, 114, 114) sts. Join and pm for beg of rnd.

Rnd 1 P to marker before center sts, sl marker, p2tog (p2tog, p2tog, p3tog, p2tog), p to end.

Rnd 2 K to 1 st before marker, S2KP removing marker, slip dec'd st back to LH needle and replace marker before dec'd st, slip st back to RH needle, k to end.

Rnd 3 Purl.

Rnd 4 Rep rnd 2.

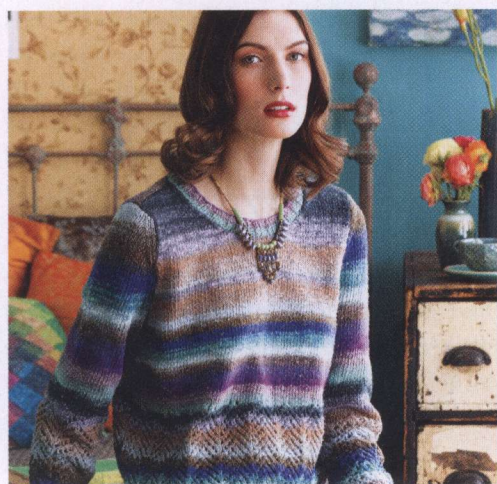
Bind off purlwise.

Armhole edging

With RS facing and size 4 (3.5mm) circular needle, beg at underarm, pick up and k 96 (102, 102, 108, 108) sts evenly around armhole edge. [P 1 rnd, k 1 rnd] twice. Bind off purlwise.

Block lightly to measurements. ■

24 Round-Neck Pullover



Sized for Small (Medium, Large, X-Large, XX-Large) and shown in size Small on pages 54 and 55.



Finished Measurements

- Bust 37 (41, 45, 48, 52)"/94 (104, 114, 122, 132)cm
- Length 21½ (22, 22½, 23, 23½)"/54.5 (56, 57, 58.5, 59.5)cm
- Upper arm 12 (13, 13¾, 14½, 15½)"/30.5 (33, 35, 37, 39.5)cm

Materials

- 4 (4, 4, 5, 5) skeins of Noro/KFI Taiyo Sport in #9
- One pair each sizes 5 and 6 (3.75 and 4mm) needles, OR SIZE TO OBTAIN GAUGE
- Size 5 (3.75mm) circular needle, 16"/40cm long
- Stitch marker

Gauge

22 sts and 32 rows = 4"/10cm over St st and chart pat using larger needles.

TAKE TIME TO CHECK GAUGE.

Back

With smaller needles, cast on 86 (94, 102, 114, 122) sts.

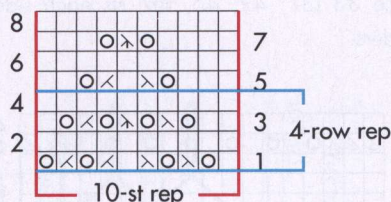
Row 1 (RS) K2, *p2, k2; rep from * to end.

Cont in k2, p2 rib as established for 17 rows more, end with a WS row. Change to larger needles.

Inc row (RS) K5 (2, 1, 12, 11), M1, [K5, M1] 16 (18, 20, 18, 20) times, k1 (2, 1, 12, 11)—103 (113, 123, 133, 143) sts. Purl 1 row.

Beg Chart

Row 1 (RS) K1, work 10-st chart rep 10 (11, 12, 13, 14) times, k2.



Stitch Key

- k on RS, p on WS
- ⊗ yo
- ⊗ k2tog
- ⊗ ssk
- ⊗ SK2P

Row 2 P2, work chart as established to last st, p1. Cont to work chart in this way through row 4, then rep rows 1–4 ten times more, then work rows 5–8 once.

Work in St st (k on RS, p on WS) until piece measures 14"/35.5cm from beg, end with a WS row.

Shape armhole

Bind off 8 sts at beg of next 2 rows.

Dec row (RS) K2, ssk, k to last 4 sts, k2tog, k2—2 sts dec'd.

Rep dec row every other row 5 (8, 10, 12, 15) times more—75 (79, 85, 91, 95) sts.

Work even in St st until armhole measures 6¼ (6¾, 7¼, 7¾, 8¼)"/16 (17, 18.5, 19.5, 21)cm, end with a WS row.

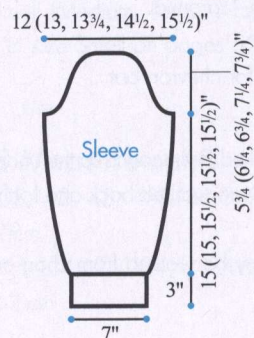
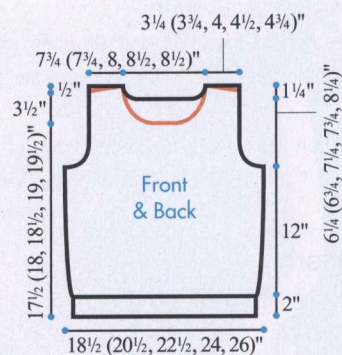
Shape back neck

Next row (RS) K1, M1, k 19 (21, 23, 25, 27), join 2nd ball of yarn and bind off center 35 (35, 37, 39, 39) sts, k to last st, M1, k1.

Working both sides at once, bind off 1 st at each neck edge 4 times, AT SAME TIME, inc 1 st at each shoulder edge every 4th row once more—18 (20, 22, 24, 26) sts rem each side. Bind off sts each side for shoulders.

Front

Work as for back until armhole measures 3½ (4, 4½, 5, 5½)"/9 (10, 11.5, 12.5, 14)cm, end with a WS row.



Next row (RS) K32 (34, 36, 38, 40) sts, join 2nd ball of yarn and bind off center 11 (11, 13, 15, 15) sts, k to end.

Working both sides at once, bind off 3 sts from each neck edge once, 2 sts twice, then dec 1 st at each neck edge every other row 6 times, then every 4th row 3 times, **AT SAME TIME**, when armhole measures $6\frac{1}{4}$ ($6\frac{3}{4}$, $7\frac{1}{4}$, $7\frac{3}{4}$, $8\frac{1}{4}$)/16 (17, 18.5, 19.5, 21)cm, inc 1 st at each shoulder edge on next row, then every 4th row once more—18 (20, 22, 24, 26) sts rem each side. Work 1 WS row.

Shape shoulder

Bind off 6 (7, 7, 8, 9) sts at each shoulder edge twice, 6 (6, 8, 8, 8) sts once.

Sleeves

With smaller needle, cast on 42 (42, 46, 46, 46) sts. Work in k2, p2 rib as for back for 3"/7.5cm, end with a WS row.

Inc row (RS) K1 (1, 5, 5, 5), [M1, k4 (4, 6, 6, 6)] 10 (10, 6, 6, 6) times, M1, k1 (1, 5, 5, 5)—53 sts. Purl 1 row.

Beg Chart

Note Read before cont to knit. Shaping and chart begin simultaneously. When chart is complete, remainder of sleeve is worked in St st.

Row 1 (RS) K1, work 10-st chart rep 5 times, k2.

Row 2 P2, work chart as established to last st, p1.

Cont to work chart in this way through row 4, then rep rows 1–4 for 14 times more, then work rows 5–8 once, then work in St st, **AT SAME TIME**, inc 1 st each side every 16th (12th, 10th, 8th, 6th) row 7 (9, 11, 13, 16) times—67 (71, 75, 79, 85) sts when all shaping is completed. Cont in St st until piece measures 18 (18, 18½, 18½, 18½)/45.5 (45.5, 47, 47, 47)cm from beg, end with a WS row.

Cap Shaping

Bind off 8 sts at beg of next 2 rows.

Dec row (RS) K2, ssk, k to last 4 sts, k2tog, k2—2 sts dec'd.

Rep dec row every other row 4 (6, 8, 8, 10) times, then every 4th row 4 times, then every other row 7 (7, 7, 9, 9) times. Bind off 2 sts at beg of next 4 rows. Bind off rem 11 (11, 11, 11, 13) sts.

Finishing

Sew shoulder seams (note that front shoulders are angled and back shoulders are straight). Set in sleeves. Sew sleeve and side seams.

Neckband

With RS facing and circular needle, beg at shoulder

seam, pick up and k 108 (108, 112, 116, 116) sts evenly around neck edge. Join and place marker for beg of rnd.

Rnd 1 *K2, p2; rep from * around.

Rep rnd 1 for k2, p2 rib for 5 rnds more.

Bind off in pat. ■

25 Chevron Pattern Vest



Sized for Small (Medium, Large, X-Large, XX-Large) and shown in size Small on pages 56 and 57.

● ● ● ○ INTERMEDIATE

Finished Measurements

- Bust $35\frac{1}{4}$ (40, $45\frac{3}{4}$, $48\frac{1}{2}$, 51)"/89.5 (101.5, 116, 123)cm
- Hip 40 ($45\frac{1}{2}$, 48, 51, $53\frac{1}{2}$)/101.5 (115.5, 122, 123, 136)cm
- Length 26 (27, 28, 29, 30)"/66 (68.5, 71, 73.5, 76)cm

Materials

- 3 (3, 4, 4, 5) skeins of Noro/KFI Taiyo Sport in #3
- One size 6 (4mm) circular needle, 29"/74cm long OR SIZE TO OBTAIN GAUGE
- Stitch markers
- One hook and eye

Gauges

- 20 sts and 28 rows = 4"/10cm over St st using size 6 (4mm) needle;
- 30 sts = $5\frac{1}{2}$ "/14cm and 22 rows = 4"/10cm over chevron pat using size 6 (4mm) needle.

TAKE TIME TO CHECK GAUGES.

Chevron Pattern

(over a multiple of 15 sts)

Row 1 and all RS rows *K2tog, k5, yo, k1, yo, k5, ssk; rep from * to end.

Row 2, 4 and 6 Purl.

Row 8 Knit.

Repeat rows 1–8 for chevron pat.

NOTES

1) Vest is worked in one piece up to underarms, then divided for fronts and back.

2) Work first and last 4 sts every row in garter st. Work all decreases inside of these 4 sts.

3-Needle Bind-Off

1. Hold right sides of pieces together on two needles. Insert third needle knitwise into first st of each needle, and wrap yarn knitwise.

2. Knit these two sts together, and slip them off the needles. *Knit the next two sts together in the same manner.

3. Slip first st on 3rd needle over 2nd st and off needle. Rep from * in step 2 across row until all sts are bound off.

Lower Body

Cast on 218 (248, 263, 278, 293) sts. Knit 2 rows.

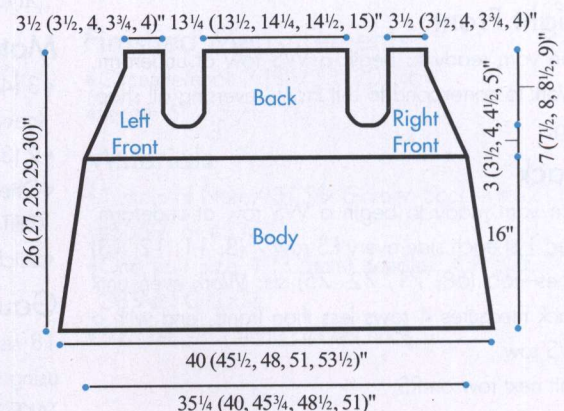
Beg Chevron Pat

Row 1 (RS) K4, work 15-st rep of chevron pat 14 (16, 17, 18, 19) times, k4.

Row 2 K4, purl to last 4 sts, k4.

Cont in pats as established until 8 rows of chevron pat have been worked 10 times, then work rows 1–6 once more—piece measures approx 16"/40.5cm from beg.

Decrease row for Small and Medium only (RS) K4, *k5, [k2tog] 3 times, k4; rep from * to last 4 sts, k4—176 (200) sts.



Decrease row for Large, X-Large and XX-Large only
(RS) K4, *k5, k2tog, k1, k2tog, k5; rep from * to last 4 sts, k4—229 (242, 255) sts.

Cont for all sizes as foll: Knit 3 rows over all sts.

Upper Body

Neck dec row (RS) K4, SKP, k to last 6 sts, k2tog, k4.

Cont to dec 1 st at neck edges as established every 4th row 14 (15, 16, 17, 17) times more.

AT SAME TIME, when Upper Body measures 2½ (3, 3½, 4, 4½)"/6.5 (7.5, 9, 10, 11.5)cm, end with a WS row and work as foll:

Mark center 72 (76, 85, 88, 93) sts for back, count 16 (24, 28, 32, 34) sts either side of center sts and place markers.

Next row (RS) Knit, working neck decs if necessary.

Next row (WS) K4, p to first marker, sl marker (sm), k16 (24, 28, 32, 34) sts, sm, p to next marker, sm, k16 (24, 28, 32, 34) sts, sm, p to last 4 sts, k4.

Rep last 2 rows once more.

Divide for Fronts and Back

Next row (RS) Knit to marker, working neck decs if necessary, remove marker k4, place these sts on a holder for Right Front, bind off 8 (16, 20, 24, 26) sts for armhole, knit to next marker, remove marker, knit to next marker, remove marker, k4 and place these 80 (84, 93, 96, 101) sts on a holder for Back, bind off 8 (16, 20, 24, 26) sts for armhole, knit to last marker, remove marker, k to end working neck decs if necessary. Cont on these left front sts only as foll:

Left Front

Next row and all WS rows K4, purl to last 4 sts, k4. Cont neck decs as established, AT THE SAME TIME, dec 1 st at armhole (end of RS rows and inside of 4-st garter edge), every RS row 7 (8, 11, 12, 13) times—18 (18, 20, 19, 20) sts. Work even until armhole measures 7 (7½, 8, 8½, 9)"/18 (19, 20.5, 21.5, 23)cm from bind-off. Place sts on holder for shoulder.

Right Front

Join yarn ready to begin a WS row at underarm. Work to correspond to Left Front, reversing all shaping.

Back

Join yarn ready to begin a WS row at underarm. Dec 1 st each side every RS row 7 (8, 11, 12, 13) times—66 (68, 71, 72, 75) sts. Work even until back measures 4 rows less than fronts, end with a WS row.

Knit next row on RS.

Next row (WS) Work 14 (14, 16, 15, 16) sts, k38 (40, 39, 42, 43) for back neck edging, work to end.

Rep last 2 rows once more.

Next row (RS) K18 (18, 20, 19, 20) sts for shoulder, place on holder, bind off center 30 (32, 31, 34, 35) sts, k to end, place rem 18 (18, 20, 19, 20) sts on holder for shoulder.

Finishing

Block pieces lightly to measurements.

Join shoulders using 3 needle bind off.

Sew hook and eye to fronts at first neck dec. ■

26 Wavy Stripes Pullover



Sized for Small/Medium (Large/1X, 2X/3X) and shown in size Small/Medium on page 58.

●●○○ EASY

Finished Measurements

- Bust 40 (48, 56)"/101.5 (122, 142)cm
- Length 22 (23, 24)"/56 (58.5, 61)cm
- Upper arm (slightly stretched) 15 (16, 17)"/38 (40.5, 43)cm

Materials

- 3 (4, 5) skeins of Noro/KFI *Tokonatsu* in each #5 (navy A) and #101 (beige B)
- 2 (3, 3) hanks in #8 (teal C)
- One pair size 6 (4mm) needles, OR SIZE TO OBTAIN GAUGE
- Stitch markers

Gauge

18 sts and 26 rows = 4"/10cm over chevron pat using size 6 (4mm) needle.

TAKE TIME TO CHECK GAUGE.

Chevron Pattern

(over multiple of 18 sts)

Rows 1 and 3 (RS) Knit.

Rows 2 and 4 Purl.

Row 5 *[P2tog] 3 times, [k1, yo] 6 times, [p2tog] 3 times; rep from * to end.

Row 6 Purl.

Rep rows 1–6 for chevron pat.

Stripe Pattern

Working in chevron pat, work 18 rows in B, 6 rows in C, 6 rows in A, 6 rows in C.

Rep these 36 rows for stripe pattern.

Note

Chevron pattern may be worked following text or chart. Stripes begin with different colors for each size so that all sizes will end with B at shoulder.

Back

With A, cast on 94 (110, 130) sts.

Row 1 (RS) K2, *p2, k2; rep from * to end.

Row 2 (WS) *P2, k2; rep from *, end p2.

Rep rows 1 and 2 for k2, p2 rib for 8 rows more, end with a WS row and dec 2 (0, 2) sts on last row—92 (110, 128) sts.

Beg chevron pat

Note Use color indicated for size.

Row 1 (RS) With C (A, C), k1 (selvage st), work 18-st pattern rep 5 (6, 7) times, k1 (selvage st).

Row 2 (WS) With C (A, C), p1, work chart as established to last st, p1.

For size Small/Medium

Cont to work pat in this way through row 6.

For size Large/1X

Cont to work pat in this way through row 6, then work 6 rows in pat with C.

For size 2X/3X

Cont to work pat in this way through row 6, then work 6 rows in pat with A, 6 rows with C.

For all sizes, beg stripe pat

Cont in pat, working selvage sts in St st, work 36 rows of stripe pat 3 times, then work rows 1–18 once more.

With B, knit 1 row, purl 1 row.

Next row (RS) With B, purl.

With B, bind off knitwise on WS.

Front

Work same as for back.

Sleeves

With A, cast on 50 (54, 58) sts.

Work in rib as for back for 10 rows. Inc 1 st each side on next row, then every 6th row 7 times more—

66 (70, 74) sts. Work even until piece measures 12"/30.5cm from beg, end with a WS row. Bind off in pat.

Finishing

Sew first and last 5½ (7½, 9½)"/14 (19, 24)cm at top of back and front tog for shoulder seams, leaving 9"/23cm unseamed for neck opening.

Place markers at front and back side edges 7½ (8, 8½)"/19 (20.5, 21.5)cm down from shoulder seams on front and back.

Sew tops of sleeves between markers, stretching slightly to fit.

Sew sleeve and side seams.

Block lightly to measurements. ■

27 Fringed Scarf



Shown on page 59.

●●○○ EASY

Finished Measurements

Approx 8 x 62"/20.5 x 157.5cm (excluding fringe)

Materials

- 3 skeins of Noro/KFI Silk Garden Sock in #S8
- Size 9 (5.5mm) circular needle, 16"/40cm long OR SIZE TO OBTAIN GAUGE
- Stitch markers

Gauge

22 sts and 19 rnds = 4"/10cm over lacy chevron pat using size 9 (5.5mm) needle. TAKE TIME TO CHECK GAUGE.

Lacy Chevron

(multiple of 8 sts)

Rnds 1 and 2 *Ssk, [k1, yo] twice, k1, k2tog, k1; rep from * around.

Rnd 3 *Yo, ssk, k3, k2tog, yo, k1; rep from * around.

Rnd 4 *K1, yo, ssk, k1, k2tog, yo, k2; rep from * around.

Rnd 5 *K2, yo, S2KP, yo, k3; rep from * around. Rep rnds 1–5 for lacy chevron pat.

Scarf

Cast on 88 sts. Join, taking care not to twist sts, and place marker for beg of rnd. Purl 1 rnd, knit 1 rnd.

Beg lacy chevron pat

Note Pattern can be worked foll text or chart.

Work rnds 1–5 of lacy chevron pat 59 times.

Knit 1 rnd. Bind off purlwise.

Block lightly to measurements.

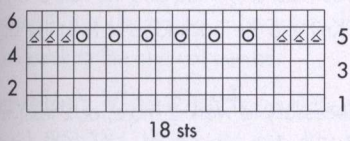
Fringe

Cut approx 200 pieces of yarn each 23"/58.5cm long. Holding 3 strands together, fold fringe in half and pull loop through 2 rnds from edge. Pull ends of strands through loop. Attach 33 fringe evenly spaced along each short edge. Trim even. ■



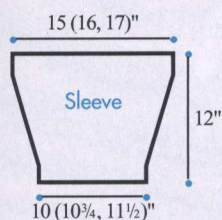
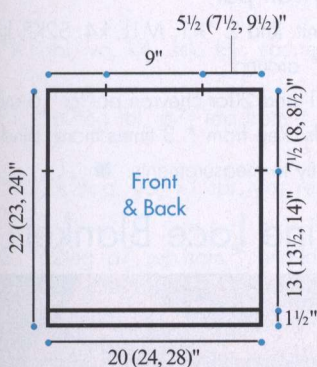
Stitch Key

- | | |
|---------|--------|
| □ k | ⊗ ssk |
| ⊙ yo | ⊠ S2KP |
| ⊞ k2tog | |



Stitch Key

- | |
|--------------------|
| □ k on RS, p on WS |
| ⊞ p2tog on RS |
| ⊙ yo |



28 Chevron Mitts



Size for women's Small/Medium and large/X-large and shown in size Small/Medium on page 60.

●●○○ EASY

Finished Measurements

- Circumference 7 (8)"/18 (20.5)cm
- Length 6"/15cm

Materials

- 1 skein of Noro/KFI Silk Garden Sock in #S211, #S359, or #S373
- One pair size 4 (3.5mm) needles, OR SIZE TO OBTAIN GAUGE
- Size D-3 (3.25mm) crochet hook

Gauge

22 sts and 34 rows = 4"/10cm over St st using size 4 (3.5mm) needles.

TAKE TIME TO CHECK GAUGE.

Chevron Pattern

(multiple of 13 sts plus 1)

Note To work stripes in the chevron pat, divide the skein of yarn into 2 separate balls (A and B). Beg each ball with distinctly different colors to achieve the most contrast in the stripes.

Row 1 (WS) With A, purl.

Row 2 (RS) With A, k1, *yo, k4, [k2tog] twice, k4, yo, k1; rep from * to end.

Row 3 With A, knit.

Row 4 With A, rep row 2.

Rows 5–8 With B, rep rows 1–4.

Rep rows 1–8 for chevron pat.

Mitt

With A, cast on 40 sts.

Work rows 1–8 of chevron pat 7 (8) times, then rep rows 1–3 once more.

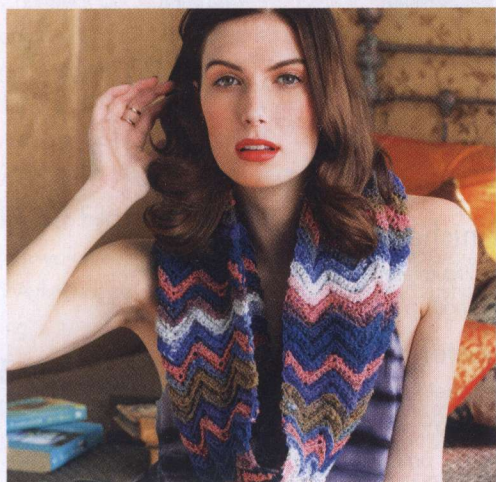
Bind off in pat.

Sew cast-on and bound-off edges tog, leaving center chevron unseamed for thumb opening.

Aligning mitt so that peak of unseamed chevron is on back side of hand, with either A or B, work a row of sc evenly around upper edge of wrist.

With either A or B, work 3 rnds of sc evenly around lower edge of mitt. ■

29 Crocheted Chevron Cowl



Shown on page 61.

●●○○ EASY

Finished Measurements

- Circumference Approx 36"/91.5cm
- Depth 15½"/39.5cm

Materials

- 2 skeins of Noro/KFI Kureopatora in #1015 (A)
- 1 skein of Noro/KFI Tokonatsu in #17 (B)
- Size F/5 (3.75mm) hook, OR SIZE TO OBTAIN GAUGE

Gauge

24 sts and 12 rows = 4"/10cm over Chevron Pat using size F/5 (3.5mm) hook.

TAKE TIME TO CHECK GAUGE.

Chevron Pattern

Ch a multiple of 13 plus 2. **Row 1** 2 sc in 2nd ch from hook, *sc in next 5 ch, skip 2 ch, sc in next 5 ch, 3 sc in next ch; rep from *, end last rep with 2 sc (instead of 3) in last ch. Ch 1, turn. **Row 2** Working through back lps only, 2 sc in first sc, *sc in next 5 sc, skip 2 sc, sc in next 5 sc, 3 sc in next sc; rep from *, end last rep 2 sc (instead of 3) in last sc. Ch 1, turn. Rep Row 2 for Chevron Pat.

Stripe Pattern

*2 rows B, 8 rows A; rep from * (10 rows) for Stripe Pat.

Cowl

With B, ch 93. Work in Chevron and Stripe Pats until 10 rows of Stripe Pat have been worked 11 times. Do not fasten off.

Finishing

Fold piece in half so that foundation ch meets last row. Working through both thicknesses, sc 2 edges tog. ■

30 Weltd Chevron Cowl



Shown on pages 62 and 63.

●●○○ EASY

Finished Measurements

- Circumference 22"/56cm
- Length 12"/30.5cm

Materials

- 1 skein of Noro/KFI Kibou in #8
- Size 7 (4.5mm) circular needle, 16"/40cm long, OR SIZE TO OBTAIN GAUGE
- Stitch marker

Gauge

20 sts and 26 rnds = 4"/10cm over chevron pat using size 7 (4.5mm) needle.

TAKE TIME TO CHECK GAUGE.

Stitches Used

M1R Insert LH from back to front under the strand between last st worked and the next st on the LH needle. Knit into the front loop to twist the st.

M1L Insert LH needle from front to back under the strand between last st worked and the next st on the LH needle. Knit into the back loop to twist the st.

Note

It may be necessary to work 2 more, or 2 less, rnds of chevron pat between purl rnds to maintain turquoise color pat on purl rnds.

Cowl

Beg at the start of a turquoise section of color repeat, cast on 108 sts. Join, taking care not to twist sts, and place marker for beg of rnd. Purl 4 rnds.

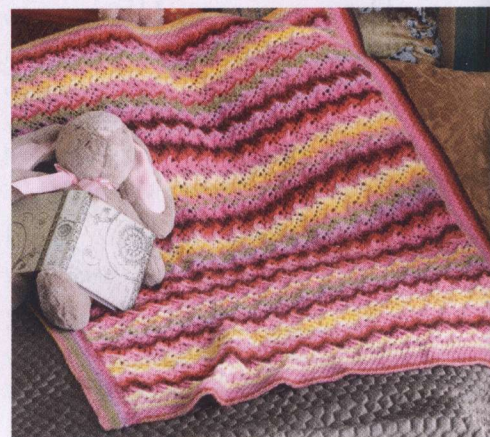
Beg chevron pat

*Rnd 1 Knit. Rnd 2 *K1, M1L, k4, S2KP, k4, M1R; rep from * around.

Rep rnds 1 and 2 for chevron pat for 16 rnds more, purl 4 rnds. Rep from * 3 times more. Bind off.

Block lightly to measurements. ■

31 Vine Lace Blanket



Shown on page 64q



Finished Measurements

30 x 37"/76 x 94cm

Materials

- 6 hanks of Noro/KFI *Shiraito* in #18
- One size 5 (3.75mm) circular needle, 40"/100cm long, OR SIZE TO OBTAIN GAUGE

Gauge

20 sts and 32 rows = 4"/10cm over Traveling Vine Stitch using size 5 (3.75mm) needle.

TAKE TIME TO CHECK GAUGE.

NOTES

- 1) Circular needle is used to accommodate the large number of sts. Do *not* join. Work back and forth in rows.
- 2) When working the Traveling Vine St, on every RS row 1 st is increased in each rep. On every WS row, 1 st is decreased in each rep, bringing the sts back to the original number.

Traveling Vine Stitch (multiple of 8 sts)

Row 1 (RS) *Yo, k1 tbl, yo, ssk, k5; rep from * to end.

Row 2 P4, *p2tog tbl, p7; rep from *, end last rep p3.

Row 3 *Yo, k1 tbl, yo, k2, ssk, k3; rep from * to end.

Row 4 P2, *p2tog tbl, p7; rep from *, end last rep p5.

Row 5 *K1 tbl, yo, k4, ssk, k1, yo; rep from * to end.

Row 6 P1, *p2tog tbl, p7; rep from *, end last rep p6.

Row 7 *K5, k2tog, yo, k1 tbl, yo; rep from * to end.

Row 8 P3, *p2tog, p7; rep from *, end last rep p4.

Row 9 *K3, k2tog, k2, yo, k1 tbl, yo; rep from * to end.

Row 10 P5, p2tog, *p7, p2tog; rep from *, end p2.

Row 11 *Yo, k1, k2tog, k4, yo, k1 tbl; rep from * to end.

Row 12 P6, p2tog, *p7, p2tog; rep from *, end p1.

Rep rows 1–12 for Traveling Vine St.

Moss Stitch (over an even number of sts)

Rows 1 and 2 *K1, p1; rep from * to end.

Rows 3 and 4 *P1, k1; rep from * to end.

Rep rows 1–4 for Moss St.

Blanket

Cast on 146 sts. Work in Moss St for 1¾"/4.5cm.

Next row (RS) K1 (selvage st), work Row 1 of Traveling Vine St, working 8-st rep 18 times, end k1 (selvage st).

Next row P1 (selvage st), work Row 2 of Traveling Vine St to last stitch, end p1 (selvage st).

Cont in pats as established, keeping first and last st in St st for selvage sts, until piece measures 35¼"/89.5cm from beg, end with a WS row.

Work in Moss St over all sts for 1¾"/4.5cm.

Bind off in pat.

Finishing

With RS facing, pick up and k 174 sts evenly along one long edge of blanket. Work Moss Stitch for 1¾"/4.5cm. Bind off in pat. Rep on opposite edge.

Sew in ends. Block piece to measurements. ■

32 Cable and Rib Blanket



Shown on page 65.



Finished Measurements

32 x 36"/81 x 91.5cm

Materials

- 7 hanks of Noro/KFI *Shiraito* in #26
- One pair size 5 (3.75mm) needles, OR SIZE TO OBTAIN GAUGE
- One size 5 (3.75mm) circular needle, 40"/100cm long
- Cable needle (cn)
- Stitch markers

Gauges

- 25 sts and 27 rows = 4"/10cm over Basket Rib Stitch using size 5 (3.75mm) needles;

- 20 sts = 2½"/6.5cm over Cable Panel using size 5 (3.75mm) needles.

TAKE TIME TO CHECK GAUGES.

Stitches Used

4-st Back Cross (BC) Sl 2 sts to cn and hold to back, k2, k2 from cn.

4-st Front Cross (FC) Sl 2 sts to cn and hold to front, k2, k2 from cn.

Basket Rib (multiple of 4 sts plus 1)

Row 1 (RS) K1, *p1, k1; rep from * to end.

Row 2 K2, *p1, k3; rep from *, end p1, k2.

Row 3 P2, *k1, p3; rep from *, end k1, p2.

Row 4 P1, *k1, p1; rep from * to end.

Row 5 K1, *p3, k1; rep from * to end.

Row 6 P1, *k3, p1; rep from * to end.

Rep Rows 1–6 for Basket Rib.

Cable Panel (panel of 20 sts)

Rows 1, 3 and 5 (WS) K2, p16, k2.

Row 2 P2, 4-st FC, k8, 4-st BC, p2.

Row 4 P2, k2, 4-st FC, k4, 4-st BC, k2, p2.

Row 6 P2, k4, 4-st FC, 4-st BC, k4, p2.

Rep rows 1–6 for Cable Panel.

Blanket

Cast on 206 sts.

Row 1 (RS) K2, *p2, k2; rep from * to end.

Row 2 P2, *k2, p2; rep from * to end.

Rep last 2 rows for K2, P2 Rib for 4 rows more—a total of 6 rows—and on last rib row, dec 1 st—205 sts.

Beg Pats

Row 1 (RS) [Work Row 1 of Basket Rib Pat over 25 sts, place marker (pm), p2, k16, p2, pm] 4 times, work Row 1 of Basket Rib Pat over last 25 sts.

Row 2 (WS) [Work Row 2 of Basket Rib Pat over 25 sts, slip marker (sm), work Row 1 of Cable Panel over 20 sts, sm] 4 times, work Row 2 of Basket Rib Pat over last 25 sts.

Cont in pats as established until piece measures approx 35"/89cm from beg, inc 1 st on last WS row—206 sts.

Work K2, P2 Rib for 6 rows.

Bind off in rib.

FINISHING

With RS facing and circular needle, pick up and k 214 sts along one long edge of blanket.

Next row (WS) P2, *k2, p2; rep from * to end.

Cont in k2, p2 rib as established for 5 rows more.








Bind off in rib.

Repeat for opposite edge. Sew in ends. ■

STANDARDS & GUIDELINES FOR CROCHET AND KNITTING

STANDARD YARN WEIGHT

Categories of yarn, gauge ranges, and recommended needle and hook sizes

Yarn Weight Symbol & Category Names	 0 Lace	 1 Super Fine	 2 Fine	 3 Light	 4 Medium	 5 Bulky	 6 Super Bulky
Type of Yarns in Category	Fingering 10 count crochet thread	Sock, Fingering, Baby	Sport, Baby	DK, Light Worsted	Worsted, Afghan, Aran	Chunky, Craft, Rug	Bulky, Roving
Knit Gauge Range* in Stockinette Stitch to 4 inches	33–40** sts	27–32 sts	23–26 sts	21–24 sts	16–20 sts	12–15 sts	6–11 sts
Recommended Needle in Metric Size Range	1.5–2.25 mm	2.25–3.25 mm	3.25–3.75 mm	3.75–4.5 mm	4.5–5.5 mm	5.5–8 mm	8 mm and larger
Recommended Needle U.S. Size Range	000 to 1	1 to 3	3 to 5	5 to 7	7 to 9	9 to 11	11 and larger
Crochet Gauge* Ranges in Single Crochet to 4 inch	32–42 double crochets**	21–32 sts	16–20 sts	12–17 sts	11–14 sts	8–11 sts	5–9 sts
Recommended Hook in Metric Size Range	Steel*** 1.6–1.4mm Regular hook 2.25 mm	2.25–3.5 mm	3.5–4.5 mm	4.5–5.5 mm	5.5–6.5 mm	6.5–9 mm	9 mm and larger
Recommended Hook U.S. Size Range	Steel*** 6, 7, 8 Regular hook B–1	B–1 to E–4	E–4 to 7	7 to I–9	I–9 to K–10½	K–10½ to M–13	M–13 and larger

* GUIDELINES ONLY: The above reflect the most commonly used gauges and needle or hook sizes for specific yarn categories.

** Lace weight yarns are usually knitted or crocheted on larger needles and hooks to create lacy, openwork patterns. Accordingly, a gauge range is difficult to determine. Always follow the gauge stated in your pattern.

*** Steel crochet hooks are sized differently from regular hooks—the higher the number, the smaller the hook, which is the reverse of regular hook sizing.

This Standards & Guidelines booklet and downloadable symbol artwork are available at: YarnStandards.com

GLOSSARY

bind off

To finish off an edge and keep stitches from unraveling by lifting the first stitch over the second, the second over the third, etc. (U.K.: cast off)

bind off in ribbing

Maintain the rib pattern as you bind off (knit the knit stitches; purl the purl stitches). (U.K.: cast off in ribbing)

cast on

Form a foundation row by making specified number of loops on the knitting needle.

decrease

Reduce the number of stitches in a row (i.e., knit 2 together; purl 2 together).

increase

Add to the number of stitches in a row (i.e., knit in front and back of stitch).

knitwise

Insert the needle into the stitch as if you were going to knit it.

make one

Insert tip of LH needle from front to back under the strand between the last stitch worked and the next stitch on the needle. Knit into the back loop to increase one stitch.

make one purl stitch

With the needle tip, lift the strand between the last stitch worked and the next stitch on left-hand needle and purl it. One purl stitch has been added.

no stitch

On some charts, "no stitch" is indicated with shaded spaces where stitches have been decreased or not yet made. In such cases, work the stitches of the chart,

skipping over the "no stitch" spaces.

place markers

Loop a piece of contrasting yarn or a purchased stitch marker onto the needle.

pick up and knit

(purl) Knit (or purl) into the loops along an edge.

purlwise:

Insert the needle into the stitch as if you were going to purl it.

selvage stitch

Edge stitch that helps make seaming easier.

skip

Skip specified number of stitches of the previous row and work into next stitch. (U.K.: miss)

slip, slip, knit

Slip next two sts knitwise, one at a time, to right-hand needle. Insert tip of left-hand needle into fronts of these sts from left to right and knit them together to decrease one stitch.

slip stitch

In knitting, pass a stitch from the left-hand to the right-hand needle as if to purl without working it. In crochet, insert hook through loop or edge, yarn over and pull through loop on hook. (U.K.: abbreviation—ss or sc)

work even

Continue in specified pattern without increasing or decreasing. (U.K.: work straight)

yarn over

In knitting, make a new stitch by placing the yarn over the right-hand needle. (U.K.: yfwd, yon, yrn) In crochet, wind yarn around hook. (U.K.: yoh or yrh)

GAUGE

Knitting gauge—the number of stitches and rows per inch—determines the size of the garment you are making. Every knitting pattern states the gauge, or "tension," on which the sizing is based. For successful results, it is essential to test your knitting against this measurement before you start a project. Make a test swatch at least 4"/10cm square, using the yarn and needle size called for in the pattern. Then measure your swatch using a ruler or a knit gauge tool. If the number of stitches and rows does not match the pattern's gauge, you must change your needle size. An easy rule to follow is: TO GET FEWER STITCHES TO THE INCH/CM, USE A LARGER NEEDLE; TO GET MORE STITCHES TO THE INCH/CM, USE A SMALLER NEEDLE. Try different needle sizes until you get the proper stitch and row gauge.

SKILL LEVELS FOR KNITTING

●●●● Beginner

Ideal first project

●●●● Easy

EASY listed under a pattern number indicates basic stitches, minimal shaping and simple finishing.

●●●● Intermediate

For knitters with some experience. More intricate stitches, shaping and finishing.

●●●● Experienced

For knitters able to work patterns with complicated shaping and finishing.

KNITTING NEEDLES

US	METRIC
0	2mm
1	2.25mm
2	2.75mm
3	3.25mm
4	3.5mm
5	3.75mm
6	4mm
7	4.5mm
8	5mm
9	5.5mm
10	6mm
10½	6.5mm
11	8mm
13	9mm
15	10mm
17	12.75mm
19	15mm
35	19

CROCHET HOOKS

US	METRIC
B/1	2.25mm
C/2	2.75mm
D/3	3.25mm
E/4	3.5mm
F/5	3.75mm
G/6	4mm
7	4.5mm
H/8	5mm
I/9	5.5mm
J/10	6mm
K/10½	6.5mm
L/11	8mm
M/13	9mm
N/15	10mm

CROCHET ABBREVIATIONS

BP back post	crochet
BPdc back post double crochet	FPtr front post treble crochet
BPsc back post single crochet	grp(s) group(s)
BPtr back post treble crochet	hdc half double crochet (U.K.: htr—half treble)
ch chain(s)	lp(s) loop(s)
ch- refers to chain or space previously made (i.e., ch-1 space)	sc single crochet (U.K.: dc—double crochet)
ch-sp chain space previously made	sc2tog single crochet 2 stitches together
dc double crochet (U.K.: tr—treble)	sk skip(ped)
dc2tog double crochet 2 stitches together	sl st slip stitch (U.K.: sc—single crochet)
dtr double treble (U.K.: trtr—triple treble)	sp(s) space(s)
FP front post	t-ch turning chain
FPdc front post double crochet	tr treble (U.K.: dtr—double treble)
FPsc front post single	trtr triple treble (U.K.: qtr—quadruple treble)

KNITTING ABBREVIATIONS

approx approximately	g gram(s)	M1 p-st make one purl stitch (see glossary)	RH right-hand	sl st slip stitch	wyif with yarn in front
beg begin(ning)	inc increase(ing)	oz ounce(s)	RS right side	ssk slip, slip, knit (see glossary)	yd yard(s)
CC contrasting color	k knit	p purl	rnd(s) round(s)	st(s) stitch(es)	yo yarn over (hook or needle)
cm centimeter(s)	kfb knit into front and back of stitch	pat(s) pattern(s)	SKP slip 1, knit 1, pass slip stitch over	St st stockinette stitch	* repeat directions following * as many times as indicated
cn cable needle	LH left-hand	pm place marker	SK2P slip 1, knit 2 stitches together, pass slip stitch over k2tog	tbl through back loop	[] repeat directions inside brackets as many times as indicated
cont continue(ing)	m meter(s)	psso pass slip stitch(es) over	S2KP slip 2 stitches together knitwise, knit 1, pass slip stitches over knit 1	tog together	
dec decrease(ing)	mm millimeter(s)	rem remain(s)(ing)		WS wrong side(s)	
dpn double pointed needle(s)	MC main color	rep repeat		wyib with yarn in back	
fol follow(s)(ing)	M1 make one (see glossary)	rev reverse stockinette stitch			

STOCKISTS

INTERNATIONAL

Love Knitting
www.loveknitting.com

UNITED STATES ARIZONA

Purl in the Pines, LLC
2544 North 4th Street
Flagstaff, AZ 86004
(928) 774-9334
www.purlinthepines.com

ARKANSAS

The Rabbit's Lair
116 South First Street
Rogers, AR 72756
(479) 636-3385 www.therabbitslair.com

CALIFORNIA

Ball & Skein & More
4210 Bridge Street, Unit 6
Cambria, CA 93428
(805) 927-3280
www.cambriayarn.com

The Black Sheep

1060 South Coast Hwy 101
Encinitas, CA 92024
(760) 436-9973
www.theblacksheep.biz

ImagiKnit

3897 18th Street
San Francisco, CA 94114
(415) 621-6642
www.imagiknit.com

Pincushion Sew & Craft

2254 Union Street
San Francisco, CA 94123
(415) 254-1403
www.pincushionsewandcraft.com

Eva's Needlework

1321 E. Thousand Oaks Blvd.
Thousand Oaks, CA 91362
(805) 379-0722
www.evasneedlework.com

Stitch Café

12443 Magnolia Blvd.
Valley Village, CA 91607
(818) 980-1234
www.stitchcafe.com

Velona Needlecraft

22435 La Palma Ave., Ste A
Yorba Linda, CA 92887
(714) 692-2286
www.velona.com

COLORADO

I Love Knitting
600 S. Holly Street, Unit 102
Denver, CO 80246
(303) 399-5648
www.iloveknittingdenver.com

LambShoppe

3512 East 12th Avenue
Denver, CO 80246
(303) 322-2223
www.thelambshoppe.com

Wooden Spools

2805 S. Broadway
Englewood, CO 80113
(303) 761-9231
www.woodenspools.com

CONNECTICUT

Village Wool LLC
2279 Main Street
Glastonbury, CT 06033
(860) 633-0898
www.villagewoolyarnshop.com

The Yarn Barn

1666 Litchfield Turnpike
Woodbridge, CT 06525
(203) 389-5117
www.theyarnbarn.com

FLORIDA

Knit and Stitch Inc.
15 Stone Street
Cocoa, FL 32922
(321) 632-4579
www.knitandstitchboutique.com

GEORGIA

Eat.Sleep.Knit
6400 Highlands Pkwy
Suite 1
Smyrna, GA 30082
(770) 432-9277
www.eatsleepknit.com

IDAHO

Alpaca Direct
1016 West Hayden Avenue
Hayden, ID 83835
(208) 209-7079;
(888) 306-0111
www.alpacadirect.com

ILLINOIS

Fiber Wild!
304 S. Main Street
Galena, IL 61036
(815) 777-3550
www.fiberwild.com

LOUISIANA

The Quarter Stitch
629 Chartres Street
New Orleans, LA 70130
(504) 522-4451

MAINE

Halcyon Yarn
12 School Street
Bath, ME 04530
(207) 442-7909
www.halcyonyarn.com

Mother of Purl Yarn Shop

541 US Route 1
Suite 11
Freeport, ME 04032
(207) 869-5280
www.motherofpurl yarn.com

MARYLAND

A Knit and Sew Studio at Woolstock
4830 Butler Road
Glyndon, MD 21071
(410) 517-1020
www.woolstock.com

Crazy for Ewe

22715 Washington Street
Leonardtown, MD 20650
(301) 475-2744
www.crazyforewe.com

So Original

3493 Olney-Laytonville Road
Olney, MD 20832
(301) 774-7970
www.sooriginal.com

MASSACHUSETTS

Webs-America's Yarn Store
75 Service Center Road
Northampton, MA 01061
(800) FOR-WEBS
www.yarn.com

MICHIGAN

A Piece of Ewe
602 Saginaw Street
Bay City, MI 48708
(989) 892-6400

Yarn Garden

111 W. Lawrence Avenue
Charlotte, MI 48813
(517) 541-9323
www.yargardenmichigan.com

Ewe-Nique Knits

515 S. Lafayette Ave., Ste D
Royal Oak, MI 48067
(248) 584-3001
www.ewe-niqueknits.com

MINNESOTA

Hugga Bugga Yarns
20225 Chesterfield Way
Farmington, MN 55024
(612) 308-1714
www.huggabugga.com

MONTANA

Yarn Scout
1203 N. Rouse, Ste 3C
Bozeman, MT 59715
(406) 577-2088
www.yarnscout.com

NEBRASKA

Yarn Charm
4640 Bair Avenue, Ste 214
Lincoln, NE 68504
(402) 858-6300
www.yarncharm.com

Personal Threads Boutique

8600 Cass Street
Omaha, NE 68114
(402) 391-7733
www.yarncharm.com

NEVADA

Jimmy Beans Wool
5000 Smithridge Dr., #A11
Reno, NV 89502
(775) 827-YARN
www.jimmybeanswool.com

NEW JERSEY

Close Knit
300 Franklin Avenue
Wyckoff, NJ 07481
(201) 891-3319
www.closeknityarns.com

NEW YORK

Annie & Co.
1763 2nd Avenue
New York, NY 10128
(212) 289-2944
www.annieandco.com

The Yarne Source

7 Schoen Place
Pittsford, NY 14534
(585) 334-5350
www.theyarnsource.com

NORTH CAROLINA

Black Mountain Yarn Shop
203-A West State Street
Black Mountain, NC 28711
(828) 669-7570
blackmountainyarnshop.com

OHIO

Hank: A Yarn Boutique
2651 Observatory Avenue
Cincinnati, OH 45208
(513) 386-9869
www.hankyarn.com

Silk Road Textiles, LLC

6106 Hamilton Avenue
Cincinnati, OH 45224
(513) 541-3700
www.silkroadcincinnati.com

OKLAHOMA

Loops
2042 Utica Square
Tulsa, OK 74114
(918) 742-9276
www.loopsknitting.com

OREGON

The Web•sters, Inc.
11 N. Main Street
Ashland, OR 97520
(800) 482-9801
www.yarnatwebsters.com

PENNSYLVANIA

Little Owls Knit Shop
2138 Market Street
Camp Hill, PA 17011
(717) 737-6700
www.littleowlsknitshop.com

The Yarn Basket

150 Falling Spring Road
Chambersburg, PA 17202
(717) 263-3236
www.yarnbasketpa.com

Mountain Knits & Pearls

114 Washington St., Ste 100
East Stroudsburg, PA 18301
(570) 424-7770
www.mtnknitspearls.com

TENNESSEE

Yarn Haven
464 N. Cedar Bluff Road
Knoxville, TN 37923
(865) 694-9900
www.theyarnhaven.com

TEXAS

Hill Country Weavers
1701 S. Congress Avenue
Austin, TX 78704
(512) 707-7396
www.hillcountryweavers.com

Linnie Darling

www.linniedarling.com

Nan's Needleworks

The Lakeside Building #205
100 Bunny Run Lane
Horseshoe Bay, TX 78657
(830) 598-4560
www.NansNeedleworks.com

Yarnbow

1310 Ranch Road 620 South
Lakeway, TX 78734
(512) 666-1310
www.yarnbow.com

The Social Knitwork

26511 Keith Street
Spring, TX 77373
(281) 630-4144
www.thesocialknitworkots.com

iPurl

3335 College Park Drive
Suite 450
The Woodlands, TX 77384
(936) 242-1031
www.iPurl.us

VIRGINIA

Fibre Space
1219 King Street
Alexandria, VA 22314
(703) 664-0344
www.fibrespace.com

The Yarn Barn

9413-C Old Burke Lake Rd.
Burke, VA 22015
(703) 978-2220
www.theyarnbarnonline.com

Carodan Farm Wool Shop

7151 Horseshoe Drive
Chincoteague Island, VA 23336
(800) 985-7083
www.carodanfarm.com

The Yarn Barn

5077 Andersonville Road
Dillwyn, VA 23936
(434) 983-1965
www.yarnbarn.com

Got Yarn

Richmond, VA 23233
(804) 303-9345
www.GotYarn.com

WASHINGTON

Serial Knitters Yarn Shop
8427 122nd Avenue NE
Kirkland, WA 98033
(425) 242-0086
www.serialknitters.com

Little Knits

3221 California Ave. SW
Seattle, WA 98116
(877) 245-8701
www.littleknits.com

The Weaving Works

4717 Brooklyn Ave. NE
Seattle, WA 98105
(206) 524-1221
www.weavingworks.com

Paradise Fibers

225 W. Indiana Avenue
Spokane, WA 99205
(888) 320-7746
www.paradisefibers.com

NORO DISTRIBUTORS:

AUSTRALIA
Prestige Yarns Pty Ltd.
www.prestigeyarns.com

CANADA

Diamond Yarn
www.diamondyarn.com

GERMANY

Designer Yarns GmbH
www.designeryarns.de

UNITED KINGDOM

Designer Yarns
www.designeryarns.uk.com

UNITED STATES

Knitting Fever
www.knittingfever.com