

# Mystical Mosaic VEST

Design by **KATHARINE HUNT**

Using a simple mosaic technique, this vest is knitted all in one piece to the armholes. Four bright colors are knit in zigzag bands over a contrasting base of black.

1 2 3 4 5 6 INTERMEDIATE

## Sizes

Woman's small (medium, large, X-large)

Instructions are given for smallest size, with larger sizes in parentheses. When only 1 number is given, it applies to all sizes.

## Finished Measurements

**Chest:** 37¼ (40¾, 44, 47¼) inches

**Length to shoulders:** 19¾ (20¾, 21¾, 22¾) inches

## Materials

- DK weight yarn (100% mercerized cotton; 249 yds/125g per skein): 2 skeins black (A); 1 skein each green (B), yellow (C) peach (D) and raspberry (E)
- Size 4 (3.5mm) 24-inch circular needle
- Size 6 (4mm) 29-inch circular needle or size needed to obtain gauge
- Stitch markers, 1 in CC for beg of rnd



MODERN MOSAIC



## Gauge

24 sts and 37 rows = 4 inches/10cm  
with larger needle in Mosaic Pat.  
To save time, take time to check gauge.

## Special Abbreviations

**Wrap and Turn (W&T):** Bring yarn to RS of work between needles, slip next st pwise to RH needle, bring yarn around this st to WS, slip st back to LH needle, turn work to begin working back in the other direction.

**Decrease 2 (Dec 2):** When working Seed St, dec 2 sts in pat over 5 sts by working 2 sts tog in pat, working 1 st in pat, working 2 sts tog in pat. This maintains the pat.

## Pattern Stitch

**Seed St** (worked flat; odd number of sts)

**Row 1:** K1, \*p1, k1; rep from \* across.  
Rep Row 1 for pat.

**Seed St** (worked in the round; even number of sts)

**Rnd 1:** \*K1, p1; rep from \* around.

**Pat rnd:** Knit the purl sts and purl the knit sts.

Rep Pat rnd for pat.

**Mosaic Pat** (multiple of 10 sts + 2)  
See Chart.

## Stripe Sequence

When working Mosaic Pat, \*work  
14 rows with A and B, 14 rows with  
A and C, 14 rows with A and D,  
14 rows with A and E; rep from \*.

## Pattern Notes

This vest is worked in one piece from the bottom up.

When working the Mosaic Pattern, always slip stitches purlwise with yarn held to the wrong side.

On the chart, the black squares represent A throughout; the white squares represent colors B, C, D and E on successive color bands.

Each row on the chart represents a right-side and a wrong-side row. Always work the first and last stitch of each row in the color of the row.

While shaping around the armholes and neckline, work all decreases after/before the edge stitch.  
Bind off all stitches with smaller needle.

## Body

With smaller needle and A, cast on 212 (232, 252, 272) sts,  
Work 5 rows in Seed St, beg and ending with a WS row.

Change to larger needle and work Mosaic Pat and Stripe Sequence following chart until body measures 11½ (12, 12½, 13) inches, ending with a WS row.

## Divide for Back & Fronts

**Next row (RS):** Work 38 (43, 45, 46) right front sts, bind off 24 (26, 30, 36) underarm sts, work 88 (94, 102, 108) back sts, bind off 24 (26, 30, 36) underarm sts, work 38 (43, 45, 46) left front sts; cut yarn.

Transfer front sts to separate pieces of waste yarn.

## Back

**Row 1 (WS):** Rejoin same color yarn as for previous row yarn and work across in pat.

**Dec row (RS):** K1, k2tog, work to last 3 sts, ssk, k1—86 (92, 100, 106) sts. Maintaining pat, rep Dec row [every RS row] 4 (4, 5, 5) times—78 (84, 90, 96) sts.

Work even until armholes measure 8¼ (8¾, 9¼, 9¾) inches, ending with a WS row.

## Shoulders

**Row 1 (RS):** Work to last 7 (7, 8, 9) sts, W&T.

**Row 2:** Work to last 7 (7, 8, 9) sts, W&T.

**Row 3:** Work to last 14 (14, 16, 18) sts, W&T.

**Row 4:** Work to last 14 (14, 16, 18) sts, W&T.

**Row 5:** Work to last 20 (22, 24, 26) sts, W&T.

**Row 6:** Work to last 20 (22, 24, 26) sts. Cut yarn; turn work and slide sts to other end of needle.

With smaller needle and A, bind off all sts.

## Left Front

Transfer left front sts back to needle.

**Row 1 (WS):** Rejoin same color yarn as for previous row yarn and work across in pat.

**Dec row (RS):** Join 2nd color; k1, k2tog, work to end of row—37 (41, 44, 45) sts.

Maintaining pat, rep Dec row [every RS row] 4 (4, 5, 5) times, ending with a WS row—33 (38, 39, 40) sts.

## Neck

**Dec row (RS):** Work to last 3 sts, ssk, k1—32 (37, 38, 39) sts.

Rep Dec row [every 4 rows] 9 (12, 11, 10) times, then [every other row] 3 times—20 (22, 24, 26) sts.

Work even until armhole measures same as back, ending with a RS row.

## Shoulders

**Row 1 (WS):** Work to last 7 (7, 8, 9) sts, W&T.

**Row 2 (RS):** Work to neck edge.

**Row 3:** Work to last 14 (14, 16, 18) sts, W&T.

**Row 4:** Work to neck edge.

With smaller needle and A, bind off all sts.

## Right Front

Transfer right front sts back to needle.

**Row 1 (WS):** Rejoin same color yarn as for previous row yarn and work across in pat.

**Dec row (RS):** Join 2nd color, work to last 3 sts, ssk, k1—37 (41, 44, 45) sts. Maintaining pat, rep Dec row [every RS row] 4 (4, 5, 5) times, ending with a WS row—33 (38, 39, 40) sts.

## Neck

**Dec row (RS):** K1, k2tog, work to end—32 (37, 38, 39) sts.

Rep Dec row [every 4 rows] 9 (12, 11, 10) times, then [every other row] 3 times—20 (22, 24, 26) sts.

Work even until armhole measures same as back, ending with a WS row.

## Shoulders

**Row 1 (RS):** Work to last 7 (7, 8, 9) sts, W&T.

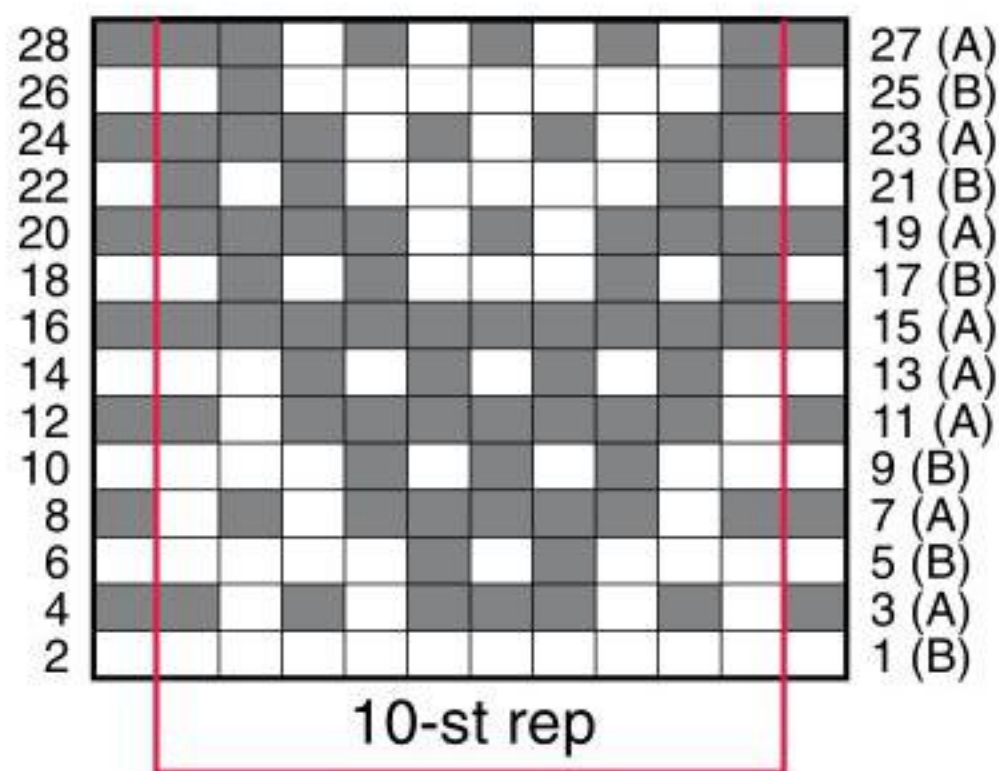
**Row 2:** Work to neck edge.



**Row 3:** Work to last 14 (14, 16, 18) sts, W&T.  
**Row 4:** Work to neck edge.  
 With smaller needle and A, bind off all sts.

**Finishing**  
 Block to finished measurements.  
 Sew shoulder seams.

**Armhole Bands**  
 With RS facing, using smaller needle and A, beg at center underarm, pick up and knit 70 (73, 76, 79) sts to shoulder, pm, pick up and knit 70 (73, 76, 79) sts to center underarm—140 (146, 152, 158) sts; pm for beg of rnd and join.  
 Work 3 rnds in Seed St.  
**Dec rnd:** Work 10 sts in pat, \*Dec 2 over next 5 sts, work 15 sts, Dec 2, work in pat to 2 sts before shoulder, Dec 2, work in pat to last 25 sts, Dec 2, work 5 sts, Dec 2, work to end of rnd—130 (136, 142, 148) sts.  
 Work 1 rnd in established pat.  
 With smaller needle, bind off in pat.



MOSAIC PAT CHART

**STITCH & COLOR KEY**

On B rows:

RS: K with B (C, D or E)

WS: P with B (C, D or E)

On A rows: Slip

On A rows:

RS: K with A

WS: P with A

On B rows: Slip

**Notes:** Each row of chart represents a RS and a WS row. Always work first and last sts (edge sts) in color of row; do all decs after/before edge sts. Work B rows in Stripe pat, working 1 full rep in B, then 1 full rep in C, 1 full rep in D and then 1 full rep in E.

**Front Bands**  
 With RS facing, using smaller circular needle and A, \*pick up and knit approx 147 (155, 161, 169) sts evenly from bottom front of right front to center back neck.

Work 5 rows Seed St.  
 With smaller needle, bind off in pat.  
 Rep on left front, working from center back neck to bottom front.  
 Sew bands at center back neck. ●

