

maLabrigo

BOOK 10
RIOS



Malabrigo ♦ Rios





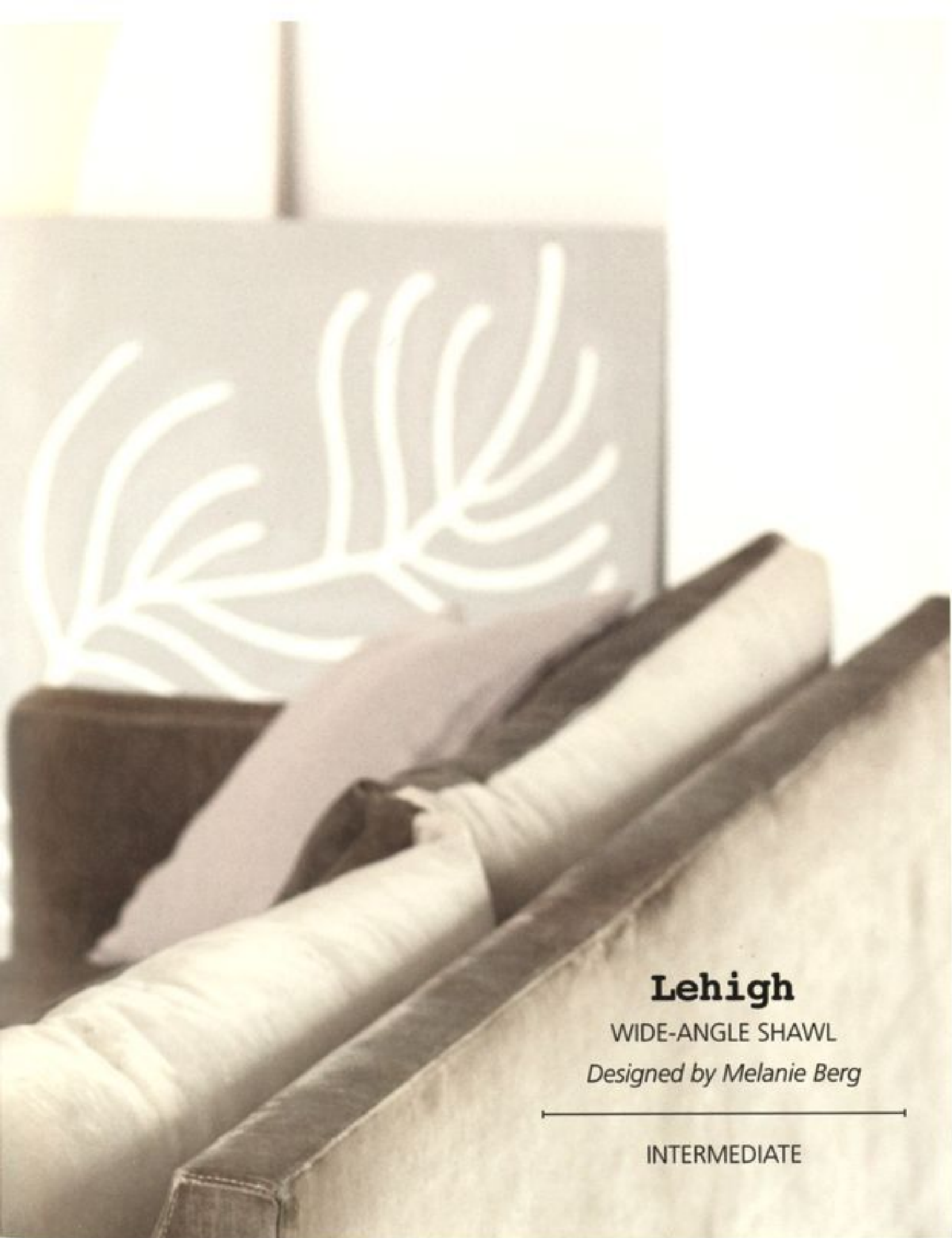
A single moment
can hold many histories.

A single setting
can lead to many worlds.

A single color
can reveal many hues.

AND A SINGLE STRAND OF MALABRIGO *RIOS* CARRIES INFINITE POTENTIAL. Take a skein of Rios off the shelf and realize at first touch that this yarn is so much more than the sum of its parts. The softest superwash Uruguayan merino, spun in a perfectly balanced twist of four smooth plies and dyed with the finest nuances of color, is alone remarkable. And yet somewhere within—at the essence of wool, air and light—lives a modicum of magic. The confidence of craftsmanship is priceless. The power to inspire is infinite. With Malabrigo as your medium, any place is a place to create. ♦





Lehigh

WIDE-ANGLE SHAWL

Designed by Melanie Berg

INTERMEDIATE

YARN

Rios by Malabrigo, 3 ½ oz/100g hanks,
each approx 210yd/192m (superwash merino wool)

- 4 hanks in #43 Plomo (A)
- 2 hanks in #806 Arco Iris (B)

NEEDLES

- One size 7 (4.5mm) circular needle, 40"/100cm long
OR SIZE TO OBTAIN GAUGE
- Size F (3.75mm) crochet hook

NOTIONS

- Clip-on stitch marker
- Tapestry needle

MEASUREMENTS

Width at top edge 104"/264cm

Depth at center 21"/53cm

GAUGE

16 sts and 40 rows = 4"/10cm over garter st
and placed bud pattern using size 7 (4.5mm) needle.
TAKE TIME TO CHECK YOUR GAUGE.

NOTES

1. Shawl is worked from the triangle point, with increases worked each side on every row up to the top edge.
2. A yo is worked at beg of each row, right after the first k1, but then is dropped at the end of the foll row. This yo is to provide stretch to the edge only and is not an increase. (When the st counts are given, do not figure the yo as a stitch.)
3. Use the clip-on st marker to mark the RS of the work so that you can remain oriented for the RS when knitting the pattern.
4. Read before beg to knit.

PATTERN STITCHES

GARTER STITCH

Knit every row.

BUD PATTERN

[Insert crochet hook into the front of st 5 rows below the 3rd st on LH needle, place yarn on hook and draw







up a long loop; sl this long loop onto RH needle, then k the next st on needle] 6 times, taking all 6 loops from the same st below. Work this bud pattern as indicated throughout the pattern. On the foll row, these added sts will be dec'd by k2tog 6 times to return to the original st count.

SHAWL

With A, cast on 6 sts.

SET-UP ROW (WS) K1, yo, kfb, k2, kfb, k1—2 sts inc'd.

PATTERN ROW 1 With A, k1, yo, kfb, k to the last 2 sts, kfb, drop the yo, k1—2 sts inc'd.

NEXT 27 ROWS Rep pattern row 1—64 sts.

BEGIN STRIPE AND PLACED BUD PATTERN

****ROW 1 (RS)** With B, k1, yo, kfb, k to the last 2 sts, kfb, drop the yo, k1.

ROW 2 Rep row 1.

ROWS 3–8 With A, rep (the last 2 rows) 3 times more—80 sts.

ROW 9 With B, k1, yo, kfb, k3, *k4, work 1 bud pattern, k4; rep from * to last 5 sts, end k3, kfb, drop the yo, k1.

ROW 10 With B, k1, yo, kfb, k4, *k4, [k2tog] 6 times, k4; rep from * to last 6 sts, end k4, kfb, drop the yo, k1.

ROWS 11–16 With A, (rep row 2) 6 times—96 sts.

ROW 17 With B, k1, yo, kfb, k4, *k4, work 1 bud pattern, k4; rep from * to last 6 sts, end k4, kfb, drop the yo, k1.

ROW 18 With B, k1, yo, kfb, k5, *k4, [k2tog] 6 times, k4; rep from * to last 7 sts, end k5, kfb, drop the yo, k1.

ROWS 19–24 With A, (rep row 2) 6 times—112 sts.

ROW 25 With B, k1, yo, kfb, k5, *k4, work 1 bud pattern, k4; rep from * to last 7 sts, end k5, kfb, drop the yo, k1.

ROW 26 With B, k1, yo, kfb, k6, *k4, [k2tog] 6 times, k4; rep from * to last 8 sts, end k6, kfb, drop the yo, k1—116 sts.

NEXT 16 ROWS With A, rep pattern row 1—148 sts.

NEXT 26 ROWS Rep rows 1–26 between **'s—200 sts.

NEXT 16 ROWS With A, rep pattern row 1—232 sts.

NEXT 26 ROWS Rep rows 1–26 between **'s—284 sts.

NEXT 16 ROWS With A, rep pattern row 1—316 sts.

NEXT 26 ROWS Rep rows 1–26 between **'s—368 sts.

NEXT 16 ROWS With A, rep pattern row 1—400 sts.

NEXT 10 ROWS Rep rows 1–10 from ** up to end of row 10—420 sts.

NEXT 4 ROWS With A, rep pattern row 1—428 sts.

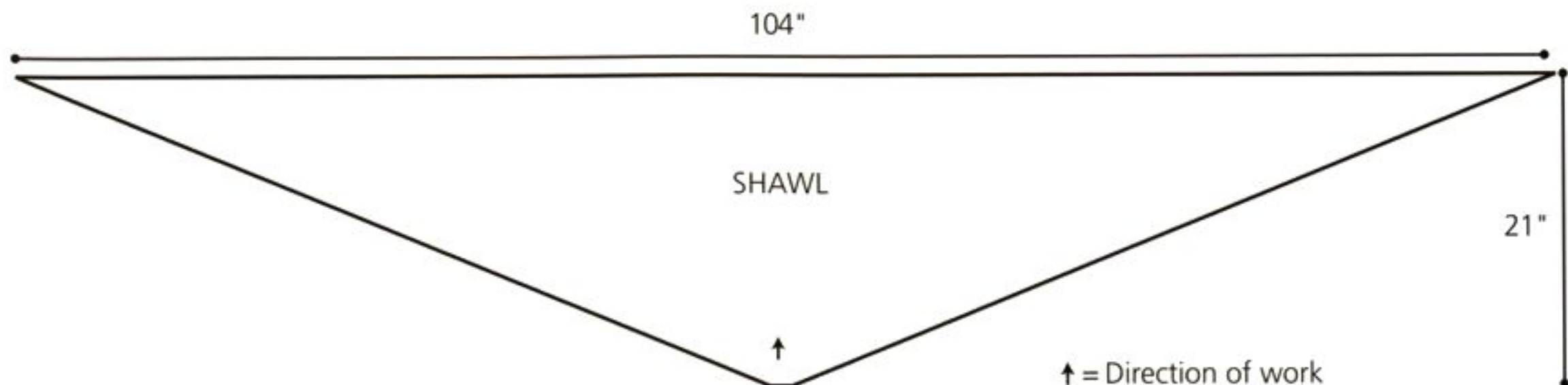
BIND-OFF ROW (RS) K1, *k1, sl 2 sts back to LH needle and k2tog tbl; rep from * to end until all sts are bound off. Pull yarn through last st and fasten off.

FINISHING

Using tapestry needle, weave in ends on the WS. Steam-block the finished shawl to measurements.

TASSEL

Cut a piece of cardboard to 6"/15cm long and 3"/7.5cm wide. Wind B approx 40 times around the length of the cardboard. Using a 15"/38cm length of B, pull through the top of the cardboard's wound yarn and tie tightly at the center to secure. Cut the ends of the opposite wound yarn to free the tassel ends. Then with a 2nd 15"/38cm length of B, tie at approx 1"/2.5cm from the tied top to form the tassel top. Tie and fasten the ends of the tie into the tassel ends. Use the top tie to fix the tassel to the tip of the shawl. Trim ends of tassel evenly. ♦



Silicon Alley

TEXTURED STRIPED PULLOVER

Designed by Rosemary Drysdale

INTERMEDIATE

SIZED FOR X-SMALL, SMALL, MEDIUM,
LARGE, X-LARGE, XX-LARGE AND
SHOWN IN SIZE X-SMALL

YARN

Rios by Malabrigo, 3 ½ oz/100g hanks,
each approx 210yd/192m (superwash merino wool)

- 2 (3, 3, 3, 4, 4) hanks in #195 Black (B)
- 2 hanks each in #872 Purpuras (A)
and #43 Plomo (C)

NEEDLES

- One pair each sizes 7 and 8 (4.5 and 5mm) needles
OR SIZE TO OBTAIN GAUGE
- One size 7 (4.5 mm) circular needle, 16"/40cm long

NOTIONS

- Stitch holders
- Tapestry needle

MEASUREMENTS

Bust 32 ½ (35, 37, 40, 42, 44 ½)" / 82.5

(89, 94, 101.5, 106.5, 113)cm

Length 22 (22 ½, 23, 23 ½, 24, 24 ½)" / 56

(57, 58.5, 59.5, 61, 62)cm

Upper arm 11 ½ (12 ¼, 13 ½, 14 ¼, 15 ½, 16 ¼)" / 29

(31, 34, 36, 39.5, 41)cm

GAUGE

20 sts and 34 rows = 4"/10cm over mosaic band
stripe pattern using larger needles.

TAKE TIME TO CHECK YOUR GAUGE.

MOSAIC BAND STRIPE PATTERN

(Over an odd number of sts)

ROW 1 (WS) With A, knit.

ROW 2 (RS) With B, k1 *sl 1 wyib, k1; rep from * to end.

ROW 3 With B, k1, *sl 1 wyif, k1; rep from * to end.

ROW 4 With A, knit.





ROW 5 With A, knit.

ROW 6 With B, k2, *sl 1 wyib, k1; rep from *, end k2 instead of k1.

ROW 7 With B, k2, *sl 1 wyif, k1; rep from *, end last rep k2 instead of k1.

ROW 8 With A, knit.

ROWS 9–16 Rep rows 1–8 once more.

ROW 17 With A, knit.

ROW 18 With B, knit.

ROW 19 With B, purl.

ROW 20 With C, knit.

ROW 21 (WS) With C, knit.

ROWS 22 AND 23 Rep rows 2 and 3.

ROWS 24 AND 25 With C, knit.

ROWS 26 AND 27 Rep rows 6 and 7.

ROW 28 With C, knit.

ROWS 29–36 Rep rows 21–28 once more.

ROW 37 With C, knit.

ROW 38 With B, knit.

ROW 39 With B, purl.

ROW 40 With A, knit.

Rep rows 1–40 for mosaic band stripe pattern.

THREE-NEEDLE BIND OFF

Sl sts to be joined on 2 parallel needles with needles pointing in the same direction. From the WS, k1 st from front and back needle tog then bind off.

BACK

With smaller needles and A, cast on 81 (87, 93, 99, 105, 111) sts.

Change to B and knit 4 rows. Change to larger needles.

NEXT ROW (RS) With A, knit.

Then beg with row 1, work in mosaic band stripe pat, rep rows 1–40 until piece measures 15"/38cm from beg.

SHAPE ARMHOLE

Bind off 4 (4, 5, 5, 6, 6) sts at beg of next 2 rows. Dec 1 st each side of next row, then every other row 2 (4, 4, 5, 6, 8) times more—67 (69, 73, 77, 79, 81) sts. Work even until armhole measures 7 (7½, 8, 8½, 9, 9½)" / 18 (19, 20.5, 21.5, 23, 24)cm.

Leave sts on hold.

FRONT

Work same as back until armhole measures 5 (5½, 6, 6½, 7, 7½)" / 12.5 (14, 15, 14, 16.5, 18, 19)cm.

SHAPE NECK

NEXT ROW (RS) Work 23 (24, 26, 28, 28, 29) sts, sl center 21 (21, 21, 21, 23, 23) sts to a st holder for neck, join a 2nd ball of yarn and work rem 23 (24, 26, 28, 28, 29) sts. Working both sides at once, cont to shape neck binding off 4 sts from each neck edge once, 3 sts once, then 2 sts once—14 (15, 17, 19, 19, 20) sts rem each side. Work even until armhole measures same as back.

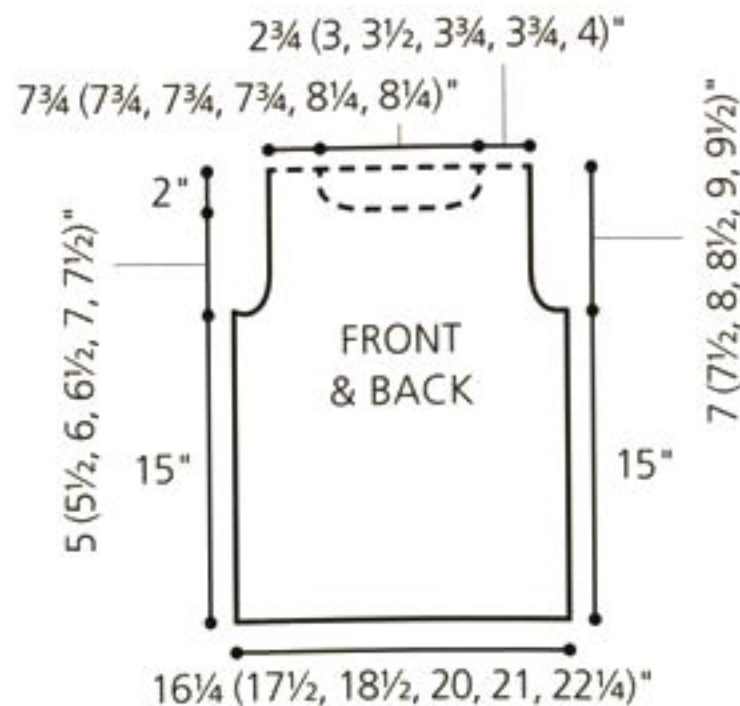
JOIN SHOULDERS

Using 3-needle bind-off method, join the 14 (15, 17, 19, 19, 20) sts from each front shoulder to the corresponding back shoulders. Leave the rem 39 (39, 39, 39, 41, 41) back neck sts on holder.

SLEEVES

With smaller needles and A, cast on 45 (49, 53, 57, 61, 65) sts. Change to B and knit 4 rows. Change to larger needles.

NEXT ROW (RS) With A, knit. Then, beg with row 1,



work in mosaic band stripe pat, rep rows 1–40, AT SAME TIME, inc 1 st each side on next row then every 14th row twice, every 12th row 3 (3, 4, 4, 5, 5) times—57 (61, 67, 71, 77, 81) sts. Work even until piece measures 12"/30.5cm from beg, ending on same color pat row as the back or front.

SHAPE CAP

Bind off 4 (4, 5, 5, 6, 6) sts at beg of next 2 rows.

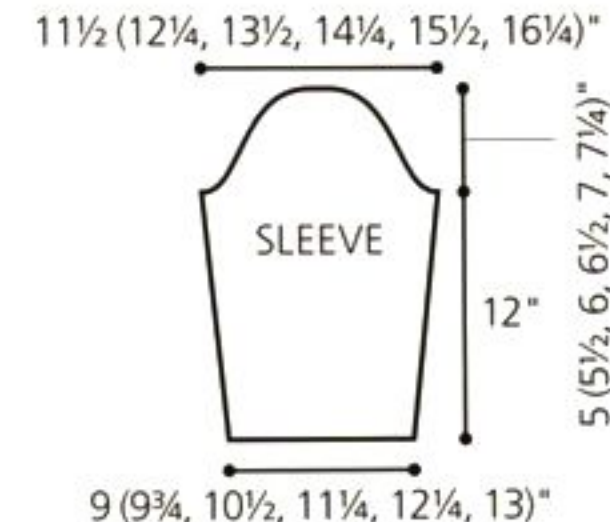
Dec 1 st each side every other row 3 times, then every 4th row twice, every other row 12 (14, 16, 18, 20, 22) times—15 sts. Bind off 2 sts at beg of next 2 rows. Bind off rem 11 sts.

FINISHING

Block pieces lightly to measurements. Set in sleeves. Sew side and sleeve seams.

NECKBAND

With RS facing, circular needle and B, pick up and k 101 (101, 101, 101, 105, 105) sts evenly around neck edge. Join to work in rnds and pm to mark beg of rnd. Knit 1 rnd, purl 1 rnd, knit 1 rnd. Cut B. Bind off knitwise with A. Using tapestry needle, weave in ends on the WS. ♦





ГИЛАНА

High Line

ASYMMETRICAL TRIANGLE SCARF

Designed by Justyna Lorkowska

EXPERIENCED

YARN

Rios by Malabrigo, 3 ½ oz/100g hanks,
each approx 210yd/192m (superwash merino wool)
• 2 hanks each in #122 Niebla (A) and
#611 Ravelry Red (B)

NEEDLES

• One size 8 (5mm) circular needle, 32"/80cm long
OR SIZE TO OBTAIN GAUGE

NOTIONS

• Tapestry needle

MEASUREMENTS

• Width at longest edge 75"/190.5cm
• Depth at point 27"/68.5cm

GAUGE

16 sts and 32 rows = 4"/10cm over garter st
using size 8 (5mm) needle.
TAKE TIME TO CHECK YOUR GAUGE.

SHORT-ROW WRAP & TURN (W&T)

on RS row (on WS row)

1. Wyib (wyif), sl next st purlwise.
2. Move yarn between the needles to the front (back).
3. Sl the same st back to LH needle. Turn work.
One st is wrapped.
4. When working the wrapped st, insert RH needle
under the wrap and work it tog with the
corresponding st on needle.

NOTES

- 1) Refer to the diagram to clarify the direction of work
that makes up the various triangles knit using both angled
edges and short-row shaping to fit into the previous shape.
- 2) Pay close attention to the "row" or "short row" repeats
when referring to previous section for the subsequent
repeats.

SCARF

FIRST SECTION

TRIANGLE 1

With A, cast on 3 sts.

ROW 1 (RS) K1, kfb, k1—4 sts.

ROW 2 (WS) K2, kfb, k1—5 sts.

ROW 3 K1, kfb, k to end—1 st inc'd.

ROW 4 K to last 2 sts, kfb, k1—1 st inc'd.

ROWS 5–20 Rep (rows 3 and 4) 8 times—23 sts.

STRIPE (1)

STRIPE ROW 1 (RS) With B, k1, kfb, k to end—1 st inc'd.

STRIPE ROW 2 (WS) With B, k to last 2 sts, kfb,
k1—1 st inc'd.

STRIPE ROW 3 (RS) With A, k1, kfb, k to end—1 st inc'd.

STRIPE ROW 4 (WS) With A, k to last 2 sts, kfb,
k1—1 st inc'd.

STRIPE ROWS 5–12 Rep (stripe rows 1–4) twice
more—35 sts.

Cut A.

TRIANGLE 2

With B, rep stripe rows 1 and 2. Then, cont with B
only as foll:

Begin short-row shaping

SHORT ROW 1 (RS) K1, kfb, k1, w&t—1 st inc'd.

SHORT ROW 2 (WS) K to last 2 sts, kfb, k1—1 st inc'd.

SHORT ROW 3 (RS) K1, kfb, k to the last wrapped st,
close up the wrap, then k1, w&t—1 st inc'd.

SHORT ROW 4 (WS) K to the last 2 sts,
kfb, k1—1 st inc'd.

NEXT 30 SHORT ROWS Rep (short rows 3 and 4) 15
times more—71 sts and 1 st rem unworked.

TRIANGLE 3

NEXT ROW (RS) With A, rep stripe row 3—72 sts.

Then, cont with A only as foll:

SHORT ROW 5 (WS) K2, w&t.

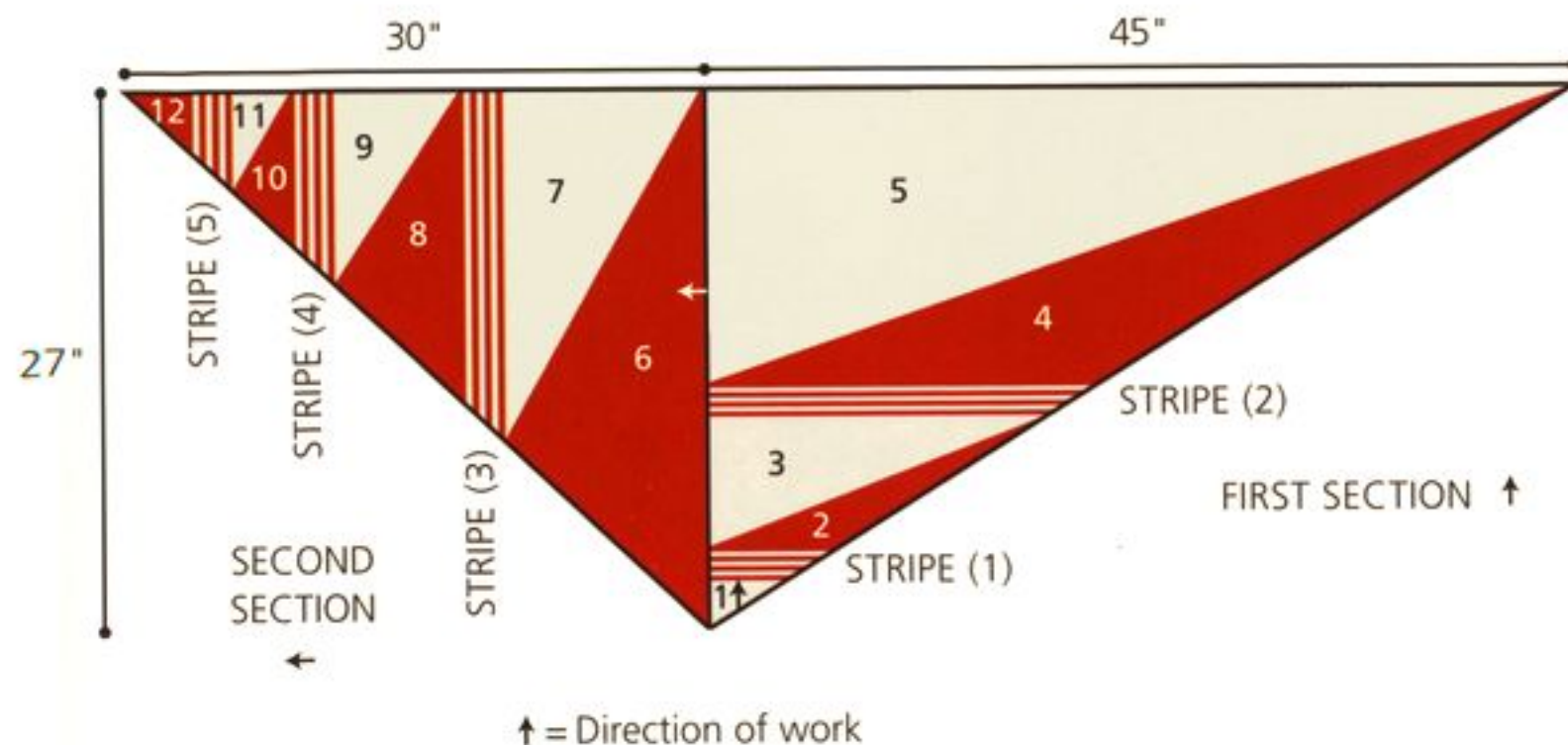
SHORT ROW 6 (RS) K to end.

SHORT ROW 7 (WS) K to the last wrapped st, close up
the wrap, then k2, w&t.

SHORT ROW 8 (RS) K to end.

WINTER





NEXT 42 SHORT ROWS Rep (short rows 7 and 8)

21 times more—3 sts rem unworked.

NEXT ROW Rep stripe row 4—73 sts.

STRIPE (2)

STRIPE ROWS 1–12 Work as for stripe 1—85 sts. Cut A.

TRIANGLE 4

With B, rep stripe rows 1 and 2—87 sts.

Then, cont with B only as foll:

Begin short-row shaping

SHORT ROWS 1 AND 2 Rep short rows 1 and 2 from Triangle 2—89 sts.

NEXT 82 SHORT ROWS Rep (short rows 3 and 4) 41 times more—171 sts and 1 st rem unworked. Cut B.

TRIANGLE 5

With A, rep stripe row 3—172 sts.

SHORT ROWS 1 AND 2 Rep short rows 5 and 6 once from Triangle 3.

NEXT 112 SHORT ROWS Rep (short rows 7 and 8) 56 times more—1 st rem unworked. Bind off all 172 sts. Cut A.

SECOND SECTION

TRIANGLE 6

Foll the diagram for direction of work and working from the RS, with B, pick up and k 108 sts along the shorter straight edge of the first section (picking up 1 st in every 2 rows).

SHORT ROW 9 (WS) Ssk, k to last 3 sts, w&t—1 st dec'd.

SHORT ROW 10 (RS) K to end.

SHORT ROW 11 (WS) Ssk, k to 2 sts before the previous wrapped st, w&t—1 st dec'd.

NEXT 66 SHORT ROWS Rep (short rows 10 and 11) 33 times more.

Rep short row 10 once more.

SHORT ROW 12 (WS) Ssk, then k to end closing up all the wraps while knitting—72 sts. Cut B.

TRIANGLE 7

Cont with A only as foll:

ROW 1 (RS) With A, knit to end.

ROW 2 (WS) With A, ssk, k to end—1 st dec'd.

Begin short-row shaping

SHORT ROW 13 (RS) K2, w&t.

SHORT ROW 14 (WS) Knit to end.

SHORT ROW 15 (RS) K to the last wrapped st, close up the wrap on the wrapped st, k1 more st, w&t.

NEXT 64 SHORT ROWS Rep (short rows 14 and 15) 32 times more—2 sts rem unworked. Rep short row 14 once more.

NEXT 2 ROWS Rep rows 1 and 2 (from this triangle 7 section) working across all sts—70 sts rem.

STRIPE (3)

NOTE At this point, for reference, the stripe rows will be numbered as stripe rows 1–4 (second section).

STRIPE ROW 1 (SECOND SECTION—RS)

With B, knit to end.

STRIPE ROW 2 (SECOND SECTION—WS)

With B, ssk, knit to end.

STRIPE ROW 3 (SECOND SECTION—RS)

With A, knit to end.

STRIPE ROW 4 (SECOND SECTION—WS)

With A, ssk, knit to end.

STRIPE ROWS 5–12 (SECOND SECTION)

Rep (stripe rows 1–4) twice more—64 sts. Cut A.

TRIANGLE 8

Cont with B only as foll:

NEXT ROW (RS) With B, knit to end.

SHORT ROW 16 (WS) Ssk, k to last 3 sts, w&t—1 st dec'd.

SHORT ROW 17 (RS) Knit to end.

SHORT ROW 18 (WS) Ssk, k to 2 sts before the previous wrapped st, w&t—1 st dec'd.

NEXT 36 SHORT ROWS Rep (short rows 17 and 18) 18 times more. Then rep short row 17 once more—44 sts.

NEXT ROW (WS) Ssk, then k to end closing up all the wraps while knitting—43 sts. Cut B.

TRIANGLE 9

Cont with A only as foll:

ROWS 1 AND 2 Rep rows 1 and 2 of triangle 7—42 sts. Begin short-row shaping

SHORT ROWS 13–15 Rep short rows 13–15 of triangle 7

NEXT 36 SHORT ROWS Rep (short rows 14 and 15) 18 times more—1 st rem unworked.

NEXT 2 ROWS Rep rows 1 and 2 of triangle 7—41 sts.

STRIPE (4)

Work same as stripe 3—35 sts.

TRIANGLE 10

Cont with B only as foll:

NEXT ROW (RS) With B, knit to end.

NEXT 3 SHORT ROWS Rep short rows 16–18 of triangle 8.

NEXT 18 SHORT ROWS Rep (short rows 17 and 18) 9 times more. Work short row 17 once more—24 sts.

NEXT ROW (WS) Ssk, then k to end closing up all the warps while knitting—23 sts. Cut B.

TRIANGLE 11

Cont with A only as foll:

NEXT 2 ROWS Rep rows 1 and 2 of triangle 7—22 sts.

NEXT 3 SHORT ROWS Rep short rows 13–15 of triangle 7.

NEXT 16 SHORT ROWS Rep (short rows 14 and 15) 8 times more—1 st rem unworked.

NEXT 2 ROWS Rep rows 1 and 2 of triangle 7—21 sts.

STRIPE (5)

Work same as stripe 3—15 sts. Cut A.

TRIANGLE 12

Cont with B only as foll:

ROW 1 (RS) With B, knit to end.

ROW 2 (WS) With B, ssk, knit to end—1 st dec'd.

ROWS 3–24 REP THE LAST (ROWS 1 AND 2)

11 times more—3 sts rem. Bind off.

FINISHING

Using tapestry needle, weave in ends on the WS.

Lay piece flat and lightly steam-block with steam iron on the WS. (Do not press, hover the iron over the piece and lightly steam-block.) ♦





Gallery Row
SWEATER - CARDIGAN
by Courtney Cedarholm





SIZED FOR SMALL/MEDIUM, LARGE/X-LARGE
AND SHOWN IN SIZE SMALL/MEDIUM

YARN

Rios by Malabrigo, 3 ½ oz/100g hanks,
each approx 210yd/192m (superwash merino wool)

- 2 hanks each in #850 Archangel (A), #416 Indiecita (B),
#872 Purpuris (C) and #863 Zarzamora (D)

NEEDLES

- One pair size 8 (5mm) needles
- OR SIZE TO OBTAIN GAUGE

NOTIONS

- Cable needle (cn)
- Clip-on stitch markers
- Stitch markers
- Tapestry needle

MEASUREMENTS

Across back at underarm 17 (18)"/43 (45.5)cm

Back length approx 31 ½ (32 ½)"/80 (82.5)cm

Armhole opening 14 (15)"/35.5 (38)cm

GAUGES

- 17 sts and 29 rows = 4"/10cm over ridge
pattern st using size 8 (5mm) needles;
- One 13-st cable panel = 1 ¾"/4.5cm wide
using size 8 (5mm) needles.

TAKE TIME TO CHECK YOUR GAUGES.

STITCH GLOSSARY

8-ST RC Sl 4 sts to cn and hold to *back*, k4, k4 from cn.

8-ST LC Sl 4 sts to cn and hold to *front*, k4, k4 from cn.

NOTE Wrap is worked in one long rectangle. After completing the knitting, clip-on st markers are placed at the intervals along the left-hand edge, as illustrated in the diagram. Then, seaming takes place as described in the finishing by matching the markers to complete the garment.

WRAP

With A, cast on 80 (88) sts.

ROW 1 (RS) Work row 1 of chart 1 over 13 sts, pm, k 54 (62), pm, work row 1 of chart 2 over 13 sts.

ROW 2 (WS) Work row 2 of chart 2 over 13 sts, sl marker, p54 (62), sl marker, work row 2 of chart 1 over 13 sts.

ROWS 3 AND 5 Work of chart 1 over 13 sts, sl marker, k54 (62), sl marker, work chart 2 over 13 sts.

ROW 4 Work chart 2 over 13 sts, sl marker, p54 (62), sl marker, work row chart 1 over 13 sts.

ROW 6 (WS) Work chart 2 over 13 sts, sl marker, k54 (62), sl marker, work chart 1 over 13 sts.

*Rep these 6 rows for the ridge pat over center 54 (62) sts AND cont to foll charts over 13 sts each side, repeating chart rows 1–8, until 4"/10cm in color A is worked from beg; end with a WS row.

Then work 2 rows color B, 4 rows color A, 2 rows color B, 2 rows color A, 4 rows color B, 2 rows color A, then 4"/10cm with color B.

Work 2 rows color C, 4 rows color B, 2 rows color C, 2 rows color B, 4 rows color C, 2 rows color B, then 4"/10 cm with color C.

Work 2 rows color D, 4 rows color C, 2 rows color D, 2 rows color C, 4 rows color D, 2 rows color C, then 4"/10cm with color D.

Work 2 rows color A, 4 rows color D, 2 rows color A, 2 rows color D, 4 rows color A, 2 rows color D*.

Rep between *'s for the color stripes until piece measures 94 (98)"/238.5 (249)cm from beg. Bind off.

FINISHING

Placing all markers along the left hand edge of the piece from the RS (see diagram), pm A1 at 16"/40.5cm from beg; then pm B1 at 8 1/2 (9)"/21.5 (23)cm from the last marker; marker B2 at 14 (15)"/35.5 (38) cm from the last marker; marker A2 at 8 1/2 (9)"/21.5 (23)cm from the last marker; marker C1 at 8 1/2 (9)"/21.5 (23)cm from the last marker; marker C2 at 14 (15)"/35.5 (38) cm from the last marker; marker A3 at 8 1/2 (9)"/21.5 (23)cm from the last marker.

The last 16"/40.5 cm remains after the last placed marker.

Place wrap flat and join markers as foll:

Fold edges so markers A1 and A3 meet, sew 16"/40.5cm seam from markers to cast-on/bind-off edges for center back.

Bring marker A2 to top of center back seam and pin in place, this forms the center point of the Y shape.

Bring B1 and B2 together (length between these points forms armhole opening), sew 8 1/2 (9)"/21.5 (23) cm seam from this point to center of Y.

Repeat for rem armhole, bringing C1 and C2 together and seaming from markers to center of Y. ♦



Stitch Key

□ k on RS, p on WS

▣ p on RS, k on WS

▨ 8-st RC

▩ 8-st LC

CHART 2

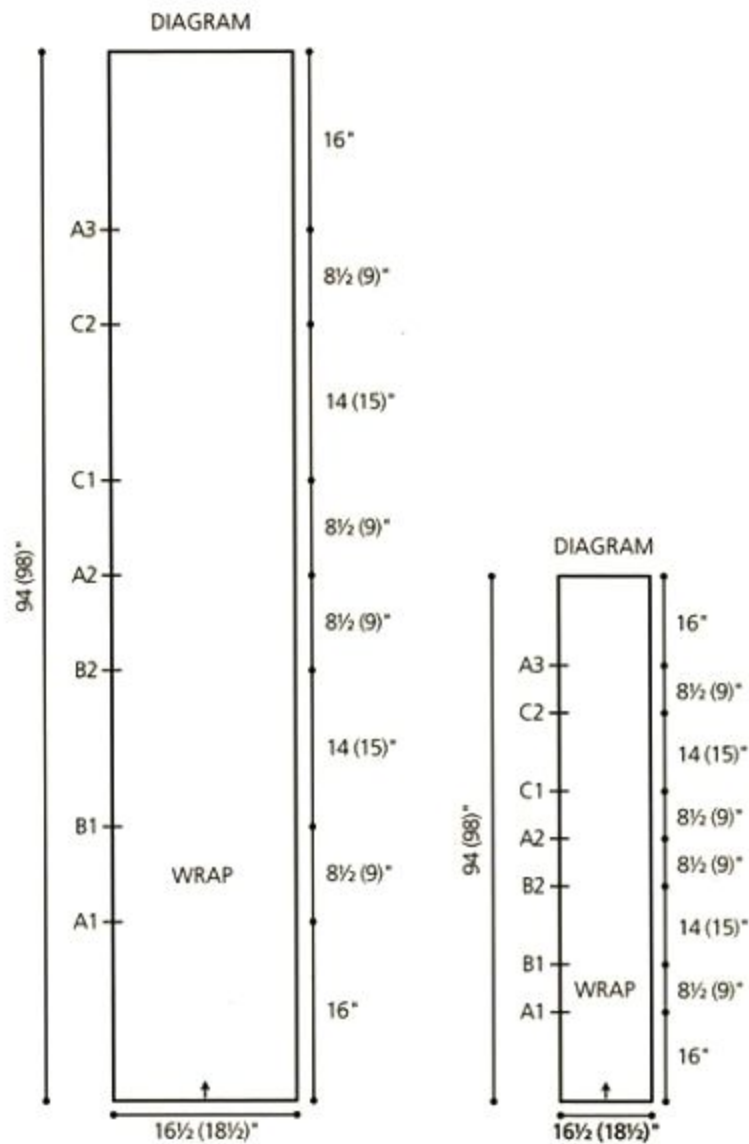


13 sts

CHART 1

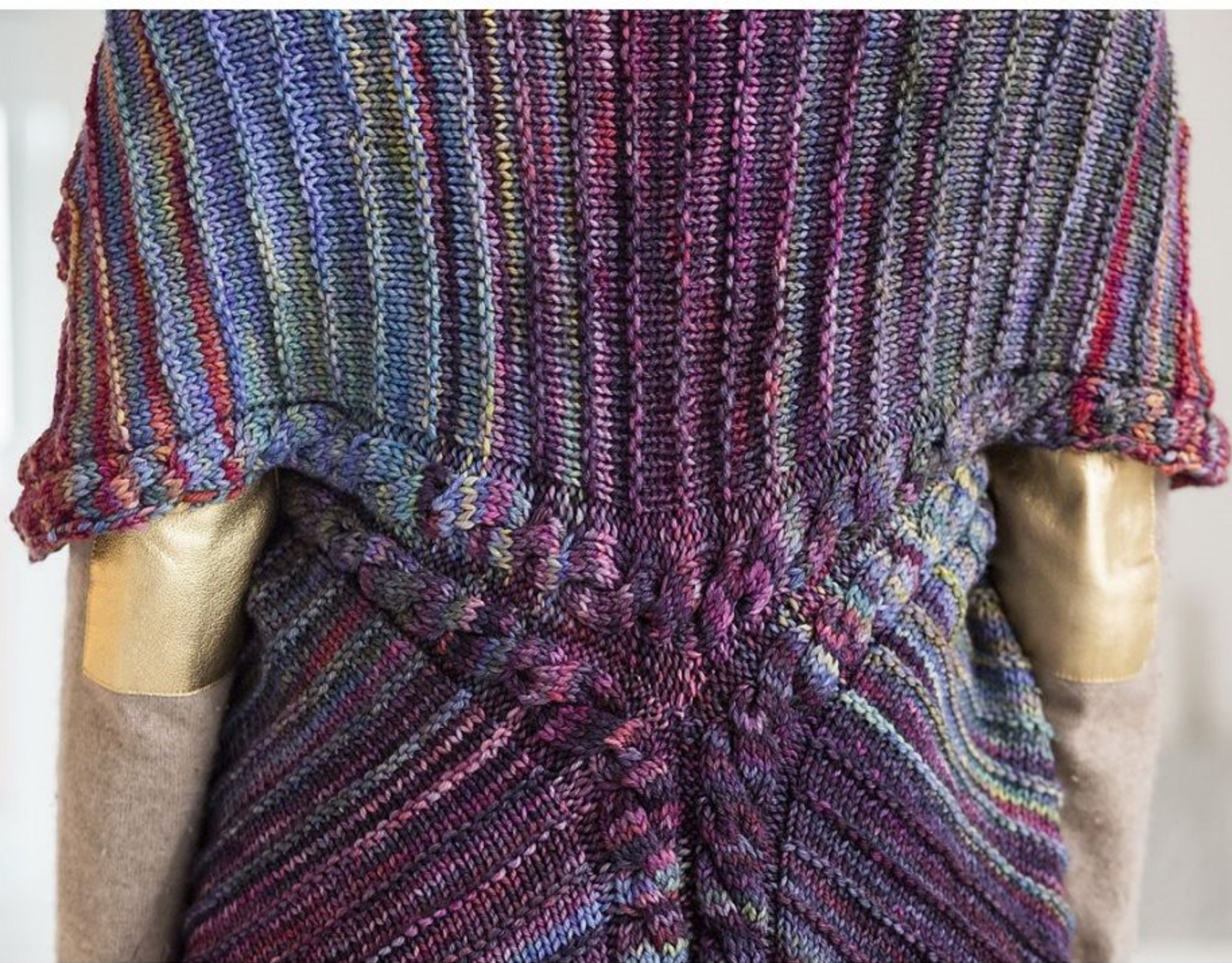


13 sts



↑ = Direction of work — = Marker





Pier 63

MULTIPATTERNED COWL

Designed by Lisa Craig

EASY

YARN

Rios by Malabrigo, 3 ½ oz/100g hanks, each approx 210yd/192m (superwash merino wool)

- 1 hank each in #138 Ivy (A) and #416 Indiecita (B)

NEEDLES

- One size 6 (4mm) circular needle, 24"/60cm long
- OR SIZE TO OBTAIN GAUGE

NOTIONS

- Stitch marker
- Tapestry needle

MEASUREMENTS

Width at lower edge 28"/71cm

Width at top edge 24 ½"/62cm

Depth 9"/23cm

GAUGES

- 22 sts and 32 rnds = 4"/10cm over St st using size 6 (4mm) needle;
 - 20 sts and 37 rnds = 4"/10cm over garter st eyelet pat using size 6 (4mm) needle.
- TAKE TIME TO CHECK YOUR GAUGES.

NOTE Cowl is worked in rounds beg at the lower edge and ending at the top edge. Due to the slight change in gauge for the three different stitch-pattern bands, the cowl will be slightly wider at the top edge. If you prefer, wear it in the opposite direction for a drapery fit.

COWL

With circular needle and A, beg at the top edge (see schematic), cast on 140 sts. Join to work in rnds, taking care not to twist sts on needle and pm to mark beg of rnds.
Knit 2 rnds.

BEGIN LACE RIB PATTERN

RND 1 *K1, yo, k2tog, p4, SKP, yo, k1; rep from * around.

RND 2 *K3, p4, k3; rep from * around.

RNDS 3 AND 5 Rep rnd 1.

RNDS 4 AND 6 Rep rnd 2.

RND 7 *P2, SKP, yo, k2, yo, k2tog, p2; rep from * around.

RND 8 *P2, k6, p2; rep from * around.

RNDS 9 AND 11 Rep rnd 7.

RNDS 10 AND 12 Rep rnd 8.

Rep rnds 1–12 once more.

BEGIN STOCKINETTE-STITCH BAND

RNDS 1 AND 2 With B, knit.

RNDS 3 AND 4 With A, knit.

RNDS 5-24 Rep (rnds 1–4) 5 times more. Cut A.

BEGIN GARTER-STITCH EYELET PATTERN

RND 1 With B, knit.

RND 2 With B, purl.

RND 3 Rep rnd 1.

RND 4 Rep rnd 2.

RND 5 *K2tog, yo; rep from * around.

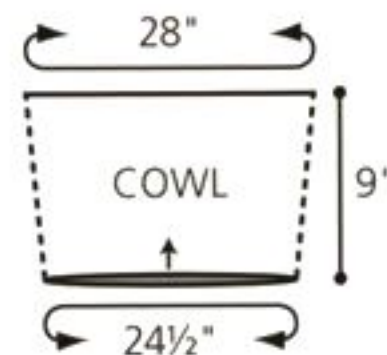
RND 6 Purl.

RNDS 7-24 Rep (rnds 1–6) 3 times more.

RNDS 25-28 Rep rnds 1–4 once. Bind off knitwise.


FINISHING

Using tapestry needle, weave in ends on the WS. Steam-block lightly to measurements. ♦



↑ = Direction of work





London Terrace

WAVE-LACE CARDIGAN

Designed by Pat Olski

EXPERIENCED

SIZED FOR SMALL/MEDIUM, LARGE,
X-LARGE/XX-LARGE AND SHOWN
IN SIZE SMALL/MEDIUM

YARN

Rios by Malabrigo, 3 ½ oz/100g hanks,
each approx 210yd/192m (superwash merino wool)
• 5 (6, 6) hanks in #57 English Rose (A)
• 1 hank in #131 Sand Bank (B)

NEEDLES

• One size 6 (4mm) circular needle, 24"/60cm long
OR SIZE TO OBTAIN GAUGE
• One set (5) size 6 (4mm) double-pointed needles (dpn)

NOTIONS

• Eight ¾"/19mm buttons
• Matching thread
• Stitch markers
• Stitch holders
• Tapestry needle

MEASUREMENTS

Bust (buttoned) 36 (41, 46 ½)"/91.5 (104, 118)cm
Length 23 ¼ (24 ¼, 25 ¼)"/59 (61.5, 64)cm
Upper arm 11 ½ (13, 14)"/29 (33, 35.5)cm

GAUGES

• 21 sts and 31 rows = 4"/10cm over wave lace
pattern chart using size 6 (4mm) needle;
• 21 sts and 29 rows/rnds = 4"/10cm over St st
using size 6 (4mm) dpn.

TAKE TIME TO CHECK YOUR GAUGES.

NOTES ON CONSTRUCTION

1. Cardigan body is worked in one piece back and forth
in rows on the circular needle with the contrast-color rib
borders knit while working the body chart pat. The two
sleeves are worked from the cuff edge in rounds of St st
on the dpn, then completed in rows while working the
cap shaping.

2. The sleeve is worked in rnds on the dpn; however
the schematic shows the sleeve pictured flat for
practical purposes.

3. Divide color B into 2 equal balls.

BODY

With B, cast on 9 sts (for band); then with A, cast on 183
(211, 239) sts; with 2nd ball of B, cast on 9 sts (for band).
There are a total of 201 (229, 257) sts.

ROW 1 (RS) With B, k1, [p1, k1] 4 times; with A, p1,
*k1, p1; rep from * to the last 9 sts; with B, [k1, p1] 4
times, sl 1 wyib.

ROW 2 (WS) With B, p1, [k1, p1] 4 times; with A,
k1, *p1, k1; rep from * to last 9 sts; with B, [p1, k1] 4
times, sl 1 wyif.

Rep these 2 rows for k1, p1 rib border for 6 rows more or
until piece measures 1"/2.5cm from beg.

BEGIN CHART PATTERN

ROW 1 (RS) With B, work 9 sts in established rib; with A,
working row 1 of wave-lace pattern chart, work sts 1-15
once, then work the 14-st rep for 11 (13, 15) times more,
work sts 16-29 of chart; with B, work 9 sts in established
rib. Cont to foll chart in this way, with the color B rib bands
as established, for 1 row more.

BUTTONHOLE ROW (RS) [K1, p1] twice, k1, yo, k2tog
(for buttonhole), p1, k1, then work in pats as established
to end. Rep the buttonhole row every 14th row 7 times
more, AT SAME TIME as the 8th (or last buttonhole) row,
beg the neck shaping (working dec st into pat) as foll:

SHAPE V-NECK

DEC ROW (RS) Work the buttonhole and the 9-st color B
rib, then with A, dec 1 st (for neck), work to the last
2 sts in A, dec 1 st (for neck), work the 9-st color B rib.
Rep the neck decrease row [every 2nd row once, every
4th row once] 11 12 (13) times, then every 0 (2nd, 0) row
0 (once, 0) more, AT SAME TIME, when piece measures
16"/40.5cm from beg, on the last WS row, first place
markers to mark the center 91 (105, 119) sts, then shape
armhole as foll:

SEPARATE FOR ARMHOLES

NEXT ROW (RS) Work to 4 sts before the first marker

bind off next 8 sts removing the marker, work to 4 sts
before the next marker, bind off 8 sts removing the marker,
work to end. Leave the 83 (97, 111) sts for the back on
hold and the right front sts on hold.

LEFT FRONT

NEXT ROW (WS) Work even.

Cont to work the established neck shaping, AT SAME
TIME, cont to shape armhole binding off 2 sts from
armhole edge 1 (2, 4) times, then dec 1 st at armhole
edge every RS row 3 (5, 6) times. When all neck dec's are
completed, work even on rem 23 (26, 27) sts until armhole
measures 7 ¼ (8 ¼, 9 ¼)"/18.5 (21, 23.5) cm.
Leave sts on hold.

RIGHT FRONT

Rejoin A at the armhole on the WS to work the right front
sts and work as for left front, reversing the shaping. Leave
the 23 (26, 27) sts on hold.

BACK

Rejoin A at the armhole on the WS and cont to work the
armhole shaping by binding off 2 sts at beg of the next
2 (4, 8) rows then dec 1 st each side every RS row 3 (5, 6)
times—73 (79, 83) sts. Work even until armhole measures
7 ¼ (8 ¼, 9 ¼)"/18.5 (21, 23.5) cm.

NEXT ROW (RS) Work 14 (17, 18) sts and place on hold,
bind off next 45 (45, 47) sts, leave rem 14 (17, 18) sts
on hold.

SLEEVES

Beg at the cuff edge with dpn and B, cast on 44 (52, 56)
sts. Divide sts evenly onto 4 needles with 11 (13, 14) sts on
each needle. Join to work in rnds, taking care not to twist
sts on needles.

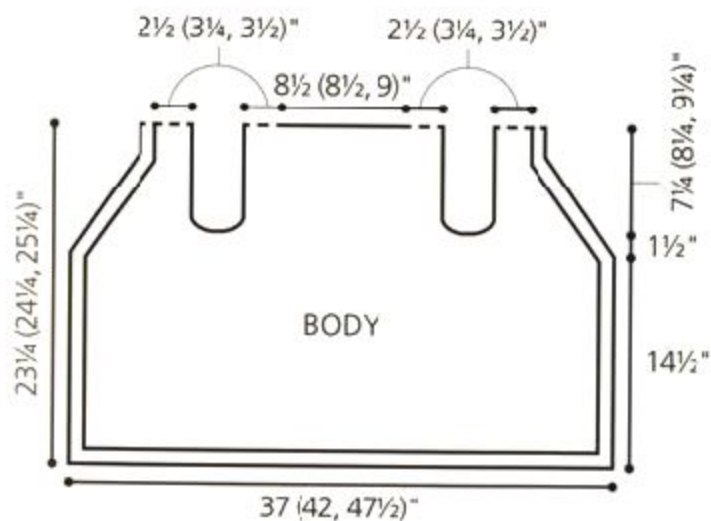
RND 1 *K1, p1; rep from * around.

Cont in k1, p1 rib for 9 rnds more. Change to A.
Eyelet rnd With A, [k2tog, yo] 22 (26, 28) times.
Knit 11 rnds.

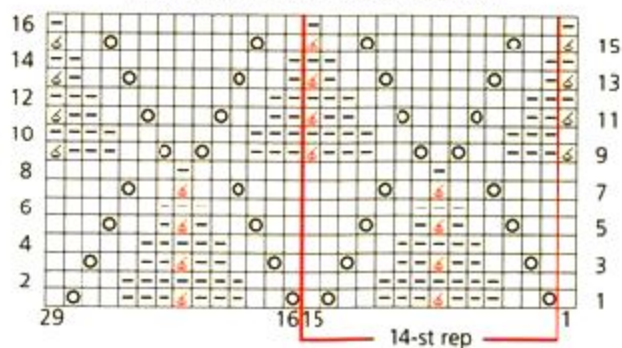
INC RND K1, M1, k to last st of rnd, M1, k1.

Rep inc rnd every 12th rnd 7 (7, 8) times more—60
(68, 74) sts. Work even in St st until piece measures
17 ½"/44.5cm from beg.





WAVE LACE PATTERN CHART



Stitch Key

- ☐ k on RS, p on WS
- ☐ p on RS, k on WS
- ☐ yo
- ☐ p2tog
- ☐ p3tog

SHAPE CAP

NOTE At this point, piece will be worked back and forth in St st in rows (knit RS rows, purl WS rows). Change to circular needle to make working in rows easier. Bind off 4 sts at beg of next 2 rows, 2 sts at beg of next 2 rows. Work 2 rows even.

DEC ROW (RS) K2, skk, k to the last 4 sts, k2tog, k2. Rep dec row every 4th row twice, every 2nd row 6 (10, 13) times. Then dec 1 st each side every row (work the WS row dec as p2, p2tog at beg and p2tog tbl, p2 at end) on the next 3 rows. Bind off 2 sts at beg of next 2 rows. Bind off 3 sts at beg of next 2 rows. Bind off rem 14 sts.

FINISHING

Using 3-needle bind-off method, join the 14 (17, 18) shoulder sts tog on the WS. Center the tops of the sleeve caps at the shoulder and sew the sleeve caps into the armholes. Using tapestry needle, weave in ends on the WS. Pm to mark the center back neck. Sl the 9 sts of one front band to dpn and cont in rin to center back neck marker. Work other band in same way. Using 3-needle bind-off method, join the bands tog at the center back neck, first adjusting if necessary to fit. Sew the bands to back neck edge. Steam-block finished piece lightly on the WS. Using sewing thread, sew on buttons opposite buttonholes. ♦







Greenway

BRIOCHE-RIB COWL

Designed by Emily Whitted

EXPERIENCED

YARN

Rios by Malabrigo, 3 ½ oz/100g hanks, each approx 210yd/192m (superwash merino wool)

- 1 hank each in #128 Fresco y Seco (Light Color—LC) and #52 Paris Night (Dark Color—DC)

NEEDLES

- Size 8 (5 mm) needle circular needle 40"/100cm long, OR SIZE TO OBTAIN GAUGE

NOTIONS

- Tapestry needle

MEASUREMENTS

Width around approx 48"/122cm

Depth 6 ½"/16.5cm

GAUGE

19 sts and 21 rnds = 4"/10 cm over brioche rib pattern using size 8 (5 mm) needles.

TAKE TIME TO CHECK YOUR GAUGES

NOTES

- 1) Pattern is reversible and can be worn on either side.
- 2) Two rows of knitting counts as one row in brioche pat.

STITCH GLOSSARY

DC = dark color

DS = dark side of the work. The knit columns on this side are in the dark color.

LC = light color

LS = light side of the work. The knit columns on this side are in the light color.

BRK1 = brioche knit st: Knit the next st on LH needle tog with the yo.

BRKYOBK = brk1 in next st but leave st on needle, yo, brk1 into same st, then drop from LH needle—2 sts inc'd.
BRSL DEC = slip next brk1 st knitwise to RH needle, k next 2 sts tog (the brk1 st and "purl" st), pass the slipped brk1 st over the k2tog—2 sts dec'd.

BRP1 = brioche purl st: Purl the next st on LH needle tog with the yo.

SL1YO = slip 1, yarn over: bring the working yarn to front, slip 1 purlwise, bring the yarn around the needle to the back to work the next st and create a yarn over.

COWL

With DC, loosely cast on 227 sts.

BEG BRIOCHE PATTERN

SET UP ROW With LC, p1, *sl1yo, p1; rep from * to end. Do not turn, slide sts to other end of needle.

SET UP ROW With DC, sl 1 wyib, *brk1, sl1yo; rep from * to last 2 sts, brk1, sl 1 wyib. Turn.

ROW 1 LS, LC K1, sl1yo, *brkyobrk, sl1yo, brsl dec, sl1yo; rep from * to last st, k1. Do not turn, slide sts to other end of needle.

ROW 1 LS, DC Sl 1 wyib, brp1, *sl1yo, p1, [sl1yo, brp1] twice; rep from * to last st, sl 1 wyib. Turn.

ROW 2 DS LC AND ALL FOLL DS LC rows P1, *sl1yo, brp1; rep from * to last 2 sts, sl1yo, p1. Do not turn, slide sts to other end of needle.

ROW 2 DS DC AND ALL FOLL DS DC rows Sl 1 wyib, *brk1, sl1yo; rep from * to last 2 sts, brk1, sl 1 wyib. Turn.

ROW 3 LS LC K1, sl1yo, *brk1, sl1yo; rep from * to last st, k1. Do not turn, slide sts to other end of needle.

ROW 3 LS DC Sl 1 wyib, brp1, *sl1yo, brp1; rep from * to last st, sl 1 wyib. Turn.

ROW 4 Rep row 2 DS LC. Rep rows 1–4 for brioche pat 7 times more. With DC, purl 1 row, knit 1 row, purl 1 row. Bind off loosely knitwise.

LOWER EDGING

With WS facing and DC, pick up and p227 sts along cast-on edge. Knit 1 row, purl 1 row. Bind off loosely knitwise.

FINISHING

Sew short ends together with light-side pattern facing using a mattress stitch. ♦





Cushman

RAGLAN PULLOVER WITH POCKETS

Designed by Isabell Kraemer

INTERMEDIATE

SIZED FOR SMALL, MEDIUM, LARGE,
X-LARGE, XX-LARGE, XXX-LARGE AND
SHOWN IN SIZE SMALL

MEASUREMENTS

Bust 36 ½ (38 ½, 40, 42 ½, 44 ¼), 46"/92.5

(98, 101.5, 108, 111.5, 117)cm

Length 22 ½ (23, 23 ½, 24, 24 ¾, 25 ¼)"/57

(58.5, 59.5, 61, 63, 64)cm

Upper arm 11 ½ (12 ¼, 13, 14 ½, 15 ½, 16 ½)"/29

(31, 33, 37, 39.5, 42)cm

YARN

Rios by Malabrigo, 3 ½ oz/100g hanks,
each approx 210yd/192m (superwash merino wool)

- 5 (6, 6, 7, 8, 8) hanks in #120 Lotus

NEEDLES

- One each size 7 (4.5mm) circular needle, 24"/60cm and 32"/80cm long OR SIZE TO OBTAIN GAUGE
- One size 6 (4mm) circular needle, 24"/60cm long
- One set (5) size 7 (4.5mm) double-pointed needles (dpn)

NOTIONS

- Stitch markers
- Stitch holders
- Tapestry needle

GAUGE

19 sts and 27 rows/rnds = 4"/10cm over St st
using size 7 (4.5mm) needle.

TAKE TIME TO CHECK YOUR GAUGE.

NOTES ON CONSTRUCTION

Pullover is worked from the back neck edge or top down,
first back and forth to drop the front neck down slightly
from the back neck, then in rnds to the lower edge of
the both the body and sleeves.

STITCH GLOSSARY

M1R Insert LH needle from back to front under the strand
between last st worked and next st on LH needle, then k
into front loop to M1R.

M1L Insert LH needle from front to back under the strand
between last st worked and next st on LH needle, then k
into back loop to M1L.

PULLOVER

Beg at the neck edge with 24"/60cm long size 7 (4.5mm)
circular needle, cast on 56 (56, 56, 56, 58, 60) sts. Do not
join, but work back and forth as foll:

SET-UP ROW (WS) P2 (right front), pm; k1, p9 (9, 9, 9,
10, 11), k1 (right sleeve), pm; p30 (back), pm; k1 p9
(9, 9, 9, 10, 11), k1 (left sleeve), pm; p2 (left front).
Inc row 1 (RS) *K to 1 st before marker, M1R, k1, sl
marker, p1, k1, M1L, k to 2 sts before next marker, M1R,
k1, p1, sl marker, k1, M1L; rep from * once more, k to
end—8 sts inc'd.

NEXT ROW AND ALL WS ROWS

K the knit and p the purl sts.

INC ROW 2 (RS) *K to marker, sl marker; rep from * once,
k1, M1L, k to 1 st before marker, M1R, k1, sl marker, k to
end—2 sts inc'd.

INC ROW 3 (RS) *K to 1 st before marker, M1R, k1, sl
marker, p1, k1, M1L, k to 2 sts before marker, M1R, k1,
p1, sl marker, k1, M1L; rep from * once more, k to end—8
sts inc'd.

INC ROW 4 (RS) *K to 1 st before marker, M1R, k1, sl
marker, p1, k to 1 st before marker, p1, sl marker, k1, M1L;
rep from * once more, k to end—4 sts inc'd.

INC ROW 5 (RS) Rep inc row 1.

INC ROW 6 (RS) Rep inc row 4.

BEGIN FRONT NECK INCREASES

INC ROW 7 (RS) K1, M1L, *k to 1 st before marker, M1R,
k1, sl marker, p1, k1, M1L, k to 2 sts before marker, M1R,
k1, p1, sl marker, k1, M1L; rep from * once more, k to 1 st
before last st, M1R, k1—10 sts inc'd.

INC ROW 8 (RS) K1, M1L, *k to 1 st before marker, M1R,
k1, sl marker, p1, k to 1 st before marker, p1, sl marker,
k1, M1L; rep from * once more, k to 1 st before last st,
M1R, k1—6 sts inc'd.



INC ROW 9 (RS) Rep inc row 7.

INC ROW 10 (RS) Rep inc row 8.

Join to work in rnds

NEXT ROW (WS) Cast on 20 sts (for center front neck), p these sts then work even to end—142 (142, 142, 142, 144, 146) sts. At end of this row, join to beg working in rnds of St st (k every rnd) with the p-st detail at center raglan seam and pm to mark beg of rnds.

NEXT RND Work even.

INC RND 1 *K to 1 st before marker, M1R, k1, sl marker, p1, k1, M1L, k to 2 sts before next marker, M1R, k1, p1, sl marker, k1, M1L; rep from * once more, k to end—8 sts inc'd.

NEXT RND Work even.

INC RND 2 *K to 1 st before marker, M1R, k1, sl marker, p1, k to 1 st before marker, p1, sl marker, k1, M1L; rep from * once more, k to end—4 sts inc'd.

NEXT RND Work even.

INC RND 3 Rep inc rnd 1.

NEXT RND Work even.

INC RND 4 Rep inc rnd 2.

NEXT RND Work even.

INC RND 5 Rep rnd 1.

Rep the last 2 rnds 10 (12, 14, 16, 18, 20) times more. There are 254 (270, 286, 302, 320, 338) sts with 80 (84, 88, 92, 96, 100) sts in each the front and in back and 47 (51, 55, 59, 64, 69) sts in each sleeve (Note that the p1 st that frames the raglans on each seam is counted in the sleeve sts).

NEXT RND Work even.

Divide for body and sleeves

NEXT RND K to marker, remove marker, place the 47 (51, 55, 59, 64, 69) sts on a st holder for sleeve, remove marker, cast on 4 (4, 4, 5, 5, 5) sts for underarm, pm, cast on 3 (3, 3, 4, 4, 4) sts for underarm, k to marker, remove marker, place the 47 (51, 55, 59, 64, 69) sts on a st holder

for sleeve, remove marker, cast on 3 (3, 3, 4, 4, 4) sts for underarm, pm, cast on 4 (4, 4, 5, 5, 5) sts for underarm, k to end removing the beg of rnd marker, then k to the next marker (this is the new beg of rnd marker).

There are 174 (182, 190, 202, 210, 218) sts in the body with 88 (92, 96, 102, 106, 110) sts in the front and 86 (90, 94, 100, 104, 108) sts in the back.

BODY

NEXT RND *P1, k to marker, sl marker; rep from * once more. Rep last rnd until piece measures 6"/15cm from the underarm.

INC RND *P1, k1, M1L, k to 1 st before marker, M1R, k1, sl marker; rep from * once more—4 sts inc'd. Rep inc rnd every 18th rnd once more—182 (190, 198, 210, 218, 226) sts. Work even until piece measures 10 1/4"/26 cm from the underarm.

BEGIN POCKETS

NEXT RND P1, k5, *pm, place next 25 sts on hold (for pocket lining), cast on 25 sts to replace these sts (for outer pocket), pm*, k to 30 sts before next marker, rep between *'s once, k to marker, sl marker, p1, k to end.

NEXT RND P1, *k to pocket marker, sl marker, p the 25 pocket sts, sl marker; rep from * once more, k to marker, sl marker, p1, k to end.

NEXT RND *P1, k to side seam marker, sl marker; rep from * once more.

Rep the last rnd until piece measures 13 1/4"/33.5cm from the underarm.

BEGIN RIB BORDER

Next rnd P1, *work in k1, p1 rib to 1 st before pocket marker, k1, sl marker, k to the next pocket marker, sl marker; rep from * once more, work in rib to 1 st before the end, end k1. Rep the last rnd until piece measures 15 1/4"/38.5 cm from the underarm. Do not cut yarn. Leave sts on hold on the needle.

POCKET LININGS

Transfer 1 set of pocket lining sts from the holder to one dpn. Work back and forth in St st on these 25 sts for

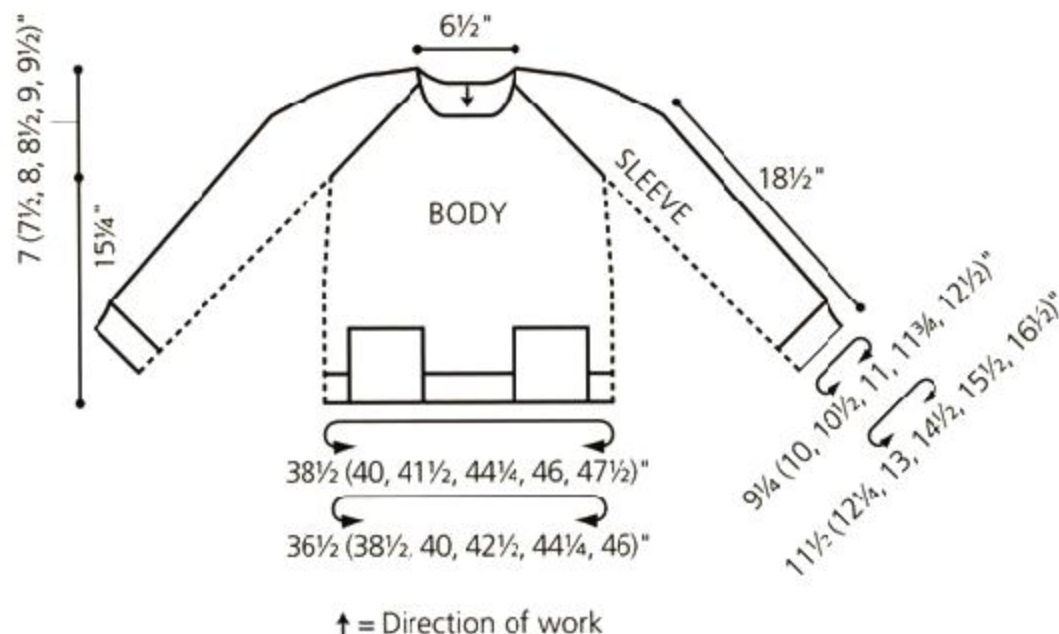


3"/7.5 cm. Work other lining in same way. Then return to the sts on the circular needle and with the pocket lining sts at the back, join the linings to the pockets as foll:

RND 1 P1, *[Rib to pocket marker, remove marker and k next pocket st tog with 1 st of lining] 25 times; rep from * once, rib to end.

RND 2 *K to the pocket sts, p25; rep from * once more, k to end.

Bind off all sts knitwise.



SLEEVES

Transfer the 47 (51, 55, 59, 64, 69) sts from one sleeve to dpn. Then beg at the underarm, pick up and k4 (4, 4, 5, 5, 5) sts in the bound-off sts, then pick up and 3 (3, 3, 4, 4, 4) sts then k the sts from the sleeve for a total of 54 (58, 62, 68, 73, 78) sts. Divide sts onto 4 dpn.

RND 1 K to last st, p1.

Rep this rnd for $3\frac{3}{4}"$ /9.5 cm.

DEC RND K1, k2tog, k to last 4 sts, ssk, k1, p1.

Rep dec rnd every 16th rnd 4 (4, 4, 5, 5, 5) times more—44 (48, 52, 56, 61, 66) sts. Work even until sleeve measures $16\frac{1}{2}"$ /42cm from the underarm.

NEXT RND Dec 0 (0, 2, 4, 5, 6) sts evenly spaced—44 (48, 50, 52, 56, 60) sts.

Then, work in k1, p1 nb for $2\frac{1}{2}"$ /5cm. Knit 1 rnd. Bind off knitwise.

FINISHING

With smaller circular needle, beg at the right back raglan seam, pick up and k 106 (106, 106, 106, 108, 110) sts evenly around neck edge. Join and pm to mark beg of rnds. Purl 1 rnd. Bind off knitwise.

Sew the pocket linings in place on the WS.

Using tapestry needle, weave in ends on the WS. Using a wet towel and steam iron, lightly steam the finished piece to schematic measurements. ♦





Chelsea Market

BLACKBERRY-STITCH WRISTRS

Designed by Christina Behnke

EASY

SIZED FOR X-SMALL/SMALL, MEDIUM/LARGE
AND SHOWN IN SIZE X-SMALL/SMALL

YARN

Rios by Malabrigo, 3 1/2oz/100g hanks,
each approx 210yd/192m (superwash merino wool)

- 1 hank in #121 Marte

NEEDLES

- One set (4) size 6 (4mm) double-pointed needles (dpn)
OR SIZE TO OBTAIN GAUGE

NOTE Wristers are knit at a tighter gauge than
recommended for this yarn.

NOTIONS

- Waste yarn
- Stitch markers
- Tapestry needle

MEASUREMENTS

Width around hand 6 1/2 (8)"/16.5 (20.5)cm

Length 8 1/2"/21.5cm

GAUGE

20 sts and 30 rnds = 4"/10 cm over St st
using size 5 (3.75 mm) dpn.

TAKE TIME TO CHECK YOUR GAUGE

BLACKBERRY STITCH

(Worked in rnds over a multiple of sts)

RND 1 *P3, (k1, yo, k1) into next; rep from * to marker,

RND 2 *K3tog, p3; rep from * to marker,

RND 3 *(K1, yo, k1) into next st, p3; rep from * to marker,









RND 4 *P3, k3tog; rep from * to marker.

Rep rnds 1–4 for blackberry st worked in rnds on needle 3.

STOCKINETTE STITCH

(Worked in rnds)

Knit every rnd.

STITCH GLOSSARY

M1R Insert LH needle from back to front under the strand between last st worked and next st on LH needle, then k into front loop to M1R.

M1L Insert LH needle from front to back under the strand between last st worked and next st on LH needle, then k into back loop to M1L.

RIGHT WRISTER

Cast on 32 (40) sts divided into 3 dpn with 8 (10) sts on needle 1, 8 (10) sts on needle 2 and 16 (20) sts on needle 3. Needles 1 and 2 are the palm of hand and needle 3 is the back of hand. Join to work in rnds, taking care not to twist sts on needles.

RND 1 *P3, k1; rep from * around.

Rep rnd 1 for k1, p3 rib for 1 1/2.5cm.

BEGIN PATTERNS

RND 1 Needle 1 Knit; Needle 2 Knit; Needle 3 Work rnd 1 of blackberry stitch.

RNDS 2–4 Work as for rnd 1, foll rnds 2–4 of blackberry stitch on needle 3.

Rep the last 4 rnds until piece measures 4"/10cm from beg, ending with pat rnd 4.

BEGIN THUMB GUSSET

INC RND 1 Work to the end of rnd, place another marker, M1L, sl end of rnd marker—1 st inc'd. The M1L is the new last st of rnd.

RNDS 2 AND 3 Work in pat to marker, sl marker (sm), k to end of rnd, sm.

INC RND 4 Work in pat to marker, sm, M1L, k to end of rnd, M1R, sm—2 sts inc'd. The M1R is the new last st of rnd.

Rep rnds 2–4 until there are 13 sts between markers and a total of 45 (53) sts. Work 1 rnd even after the last inc rnd 4.

SEPARATE FOR THUMB

NEXT RND Work in pat to marker, remove marker and sl the 13 sts to strand of waste yarn for thumb, then cast on 1 st to replace these sts—33 (41) sts.

NEXT RND Work in pat to the last st of rnd, k1. Rep the last rnd until piece measures 8"/20.5cm from beg, ending with pat rnd 4.

NEXT DEC RND *P3, k1; rep from *, end p3, ssk—32 (40) sts.

Cont in k1, p3 rib for 3 rnds more. Bind off in rib.

THUMB

Sl 13 sts from waste yarn to 3 dpn. Join yarn at the inside base of thumb and pick up 1 st in this joining—14 sts.

Divide sts with 5 sts on 2 dpn and 4 sts on 1 dpn.

Knit 4 rnds. Then, work 4 rnds in k1, p1 rib. Bind off in rib.

LEFT WRISTER

Cast on 32 (40) sts divided onto 3 dpn with 16 (20) sts on needle 1 and 8 (10) sts on needles 2 and 3. Needle 1 is the back of the hand and needles 2 and 3 are the palm of the hand. Work in k1, p3 rib for 1 1/2.5cm.


BEGIN PATTERNS

RND 1 Needle 1 Work rnd 1 of blackberry stitch; Needle 2 Knit; Needle 3 Knit.

RNDS 2–4 Work as for rnd 1, foll rnds 2–4 of blackberry stitch on needle 1. Then, work as for right wrister only with the pattern stitches reversed.

FINISHING

Using tapestry needle, weave in ends on the WS. Lightly steam-block the finished wristers to knitted measurements. ♦



Empire

CABLE-SLEEVE PULLOVER

Designed by Justyna Lorkowska

INTERMEDIATE

SIZED FOR SMALL, MEDIUM, LARGE,
X-LARGE, XX-LARGE, XXX-LARGE
AND SHOWN IN SIZE SMALL.

YARN

Rios by Malabrigo, 3 ½oz/100g hanks,
each approx 210yd/192m (superwash merino wool)
• 5 (6, 6, 7, 7, 8) hanks in #872 Purpuras

NEEDLES

• One each sizes 5 and 7 (3.75 and 4.5mm) circular needle,
24"/60cm long OR SIZE TO OBTAIN GAUGE
• One set (5) each sizes 5 and 7 (3.75 and 4.5mm)
double-pointed needles (dpn)

NOTIONS

- Stitch markers
- Cable needle (cn)
- Waste yarn
- Tapestry needle

MEASUREMENTS

Bust 35 ¾ (37 ½, 39 ½, 41 ½, 43 ¼, 45)" / 91
(95, 100, 105.5, 110, 114)cm
Length 23 (23 ½, 24, 24 ½, 25, 25 ½)" / 58.5
(59.5, 61, 62, 63.5, 64.5)cm
Upper arm 11 (12, 13, 13 ¾, 14 ½, 15 ¼)" / 28
(30.5, 33, 35, 37, 39)cm

GAUGE

17 sts and 32 rows/rnds = 4"/10cm over garter st
worked in rnds using larger circular needle.
TAKE TIME TO CHECK YOUR GAUGE.

STITCH GLOSSARY

GARTER STITCH

(Worked in rnds)

Knit 1 rnd, purl 1 rnd.

Rep these 2 rnds for garter st worked in rnds.

CABLE PANEL

(Worked in rnds over 12 sts)

RNDS 1 AND 2 Knit.

CABLE RND 3 Sl 4 sts to cn and hold to *front*, k4,
k4 from cn (8-st LC), k4.

RNDS 4–10 Knit.

CABLE RND 11 K4, sl 4 sts to cn and hold to *back*, k4,
k4 from cn (8-st RC).

RNDS 12–16 Knit.

Rep rnds 1–16 for cable panel.

SHORT-ROW WRAP & TURN (W&T)

on RS row (on WS row)

1. Wyib (wyif), sl next st purlwise.
2. Move yarn between the needles to the front (back).
3. Sl the same st back to LH needle. Turn work.
One st is wrapped.
4. When working the wrapped st, insert RH needle
under the wrap and work it tog with the corresponding
st on needle.

M1R Insert LH needle from back to front under the strand
between last st worked and next st on LH needle, then k
into front loop to M1R.

M1L Insert LH needle from front to back under the strand
between last st worked and next st on LH needle, then k
into back loop to M1L.

NOTE

Pullover is worked from the neck down.

YOKE

Beg at the neck edge with smaller circular needle,
cast on 100 sts. Join to work in rnds, taking care not to
twist sts on needle and pm to mark beg of rnd.
Work 10 rnds in garter st.

Change to larger circular needle.

SET-UP RND K12, pm, k38, pm, k12, pm, k38.

NEXT RND K12, sl marker, p to next marker, sl marker,
k12, sl marker, p to end.

INC RND 1 *K12, sl marker, k2, [M1R, k5] 3 times, M1R,
k4, [M1R, k5] 3 times, M1R, k2, sl marker; rep from * once
more—116 sts.

BEGIN SHORT ROW SHAPING

NOTE Sts are worked back and forth in rows across the
back neck sts only to make the back neck higher than the
front neck.

SHORT ROW 1 (RS) K12, sl marker, p to marker, sl
marker, k12, sl marker, p30, w & t.

SHORT ROW 2 (WS) P14, w & t.

SHORT ROW 3 (RS) P to the last wrapped st, close up the
wrap, then p2, w & t.

SHORT ROW 4 (WS) P to the last wrapped st, close up
the wrap, then p2, w & t.

SHORT ROWS 5–10 Rep (short rows 3 and 4)
3 times more.

NEXT ROW (RS) P to beg of rnd marker.

Resume working in rnds

NEXT RND Work cable rnd 3 over 12 sts, sl marker,
k to marker, sl marker, work cable rnd 11 over 12 sts,
sl marker, k to end.

NEXT RND *K12, sl marker, p to marker, sl marker; rep
from * once more.

Work 2 rnds even with the cable pats as set up
(note that the first cable is started on cable rnd 3 and the
2nd on cable 11).

INC RND 2 * Work 12-st cable panel, sl marker, k1, [M1R,
k4] 5 times, M1R, k3, [M1R, k4] 5 times, M1R, k2, sl
marker; rep from * once more—140 sts. Work 5 rnds even
in pat as established.

INC RND 3 * Work 12-st cable panel, sl marker, k2, [M1R,
k5] 5 times, M1R, k4, [M1R, k5] 5 times, M1R, k2, sl
marker; rep from * once more—164 sts. Work 5 rnds even
in pat as established.



INC RND 4 * Work 12-st cable panel, sl marker, k2, [M1R, k5] 3 times, [M1R, k4] 9 times, [M1R, k5] 3 times, M1R, k2, sl marker; rep from * once more—196 sts. Work 7 rnds even in pat as established.

INC RND 5 * Work 12-st cable panel, sl marker, k2, [M1R, k6] 3 times, [M1R, k5] 9 times, [M1R, k6] 3 times, M1R, k3, sl marker; rep from * once more—228 sts. Work 7 rnds even in pat as established.

BEGIN RAGLAN SHAPING

SET-UP RND Work 12-st cable panel, sl marker, k17, place new raglan marker, k68, place new raglan marker, k17, sl marker, work 12-st cable panel, sl marker, k17, place new raglan marker, k68, place new raglan marker, k17.

NEXT RND Work even in pat as established.

RAGLAN INC RND *Work 12-st cable panel, sl marker, k to 1 st before raglan marker, M1R, k1, sl marker, M1L, k to 1 st before raglan marker, M1R, k1, sl marker, M1L, k to cable panel marker, sl marker; rep from * once more—8 sts inc'd at the 4 raglan markers.

NEXT RND Work even in pat as established.

Rep the last 2 rnds 1 (3, 5, 7, 9, 11) times more. There are 72 (76, 80, 84, 88, 92) sts in each the front and the back and 50 (54, 58, 62, 66, 70) sts in each sleeve AND a total of 244 (260, 276, 292, 308, 324) sts.

DIVIDE FOR BODY AND SLEEVES

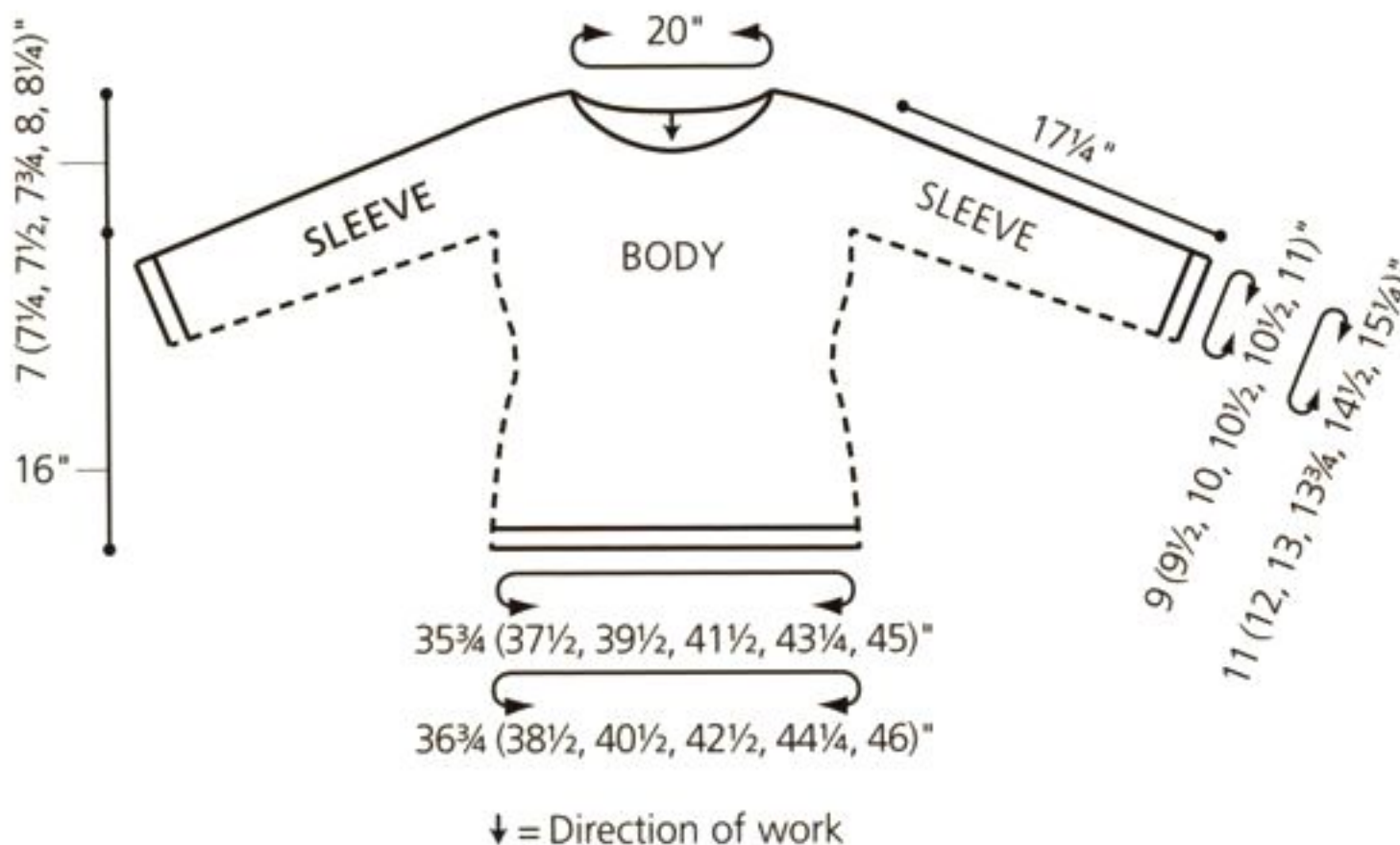
Cut yarn and removing the raglan markers, sl the 50 (54, 58, 62, 66, 70) sts for sleeve to a strand of waste yarn, then cast on 2 sts for underarm, pm, cast on 2 sts, k across the front sts, sl the next 50 (54, 58, 62, 66, 70) sts for sleeve to a strand of waste yarn, cast on 2 sts for underarm, pm, cast on 2 sts and k rem sts for back, pm—152 (160, 168, 176, 184, 192) sts. Join to work in rnds for the body.

RND 1 *K1, p to 1 st before marker, k1, sl marker; rep from * once more.

RND 2 Knit.

Rep these 2 rnds for body pat until piece measures 3"/7.5 cm from the underarm.

DEC RND *K1, k2tog, k to 3 sts before marker, ssk, k1, sl marker; rep from * once more—4 sts dec'd. Work 15 rnds even. Rep dec rnd—144 (152, 160, 168, 176, 184) sts. Work even for 1 3/4"/4.5 cm.



INC RND *K1, M1L, k to 1 st before marker, M1R, k1, sl marker; rep from * once more—4 sts inc'd.

Rep inc rnd every 12th rnd twice more—156 (164, 172, 180, 188, 196) sts. Work even until piece measures 15"/38cm from the underarm.

Change to smaller circular needle. Work in garter st on all st for 10 rnds. Bind off.

SLEEVES

Sl the 50 (54, 58, 62, 66, 70) sts from one sleeve to larger dpn. Join yarn at the center of the underarm and pick up and k3 sts in the cast-on sts, work the 50 (54, 58, 62, 66, 70) sts in pat, pick up and k3 sts in the rem cast-on sts—56 (60, 64, 68, 72, 76) sts. Divide sts onto 4 dpn with 14 (15, 16, 17, 18, 19) sts on each of the 4 dpn.

RND 1 K1, p to the 12-st cable panel, work 12-st cable panel, p to the last st, k1.

RND 2 K to the 12-st cable panel, work the 12-st cable panel, k to end.

Rep the last 2 rnds until sleeve measures 2"/5cm from the underarm.

DEC RND K1, k2tog, work in pat to the last 3 sts, ssk, k1—2 sts dec'd.

Rep dec rnd every 12th (12th, 10th, 10th, 8th, 8th) rnd 8 (9, 10, 11, 13, 14) times more—38 (40, 42, 44, 46) sts. Work even until sleeve measures 16 1/4"/41cm from the underarm.

Change to smaller dpn. Work in garter st on all sts for 10 rnds. Bind off.

Work other sleeve in same way.


FINISHING

Block finished piece to measurements. Using tapestry needle, weave in ends on the WS.









Hudson Yards

WINDOWPANE HAT

Designed by Talitha Kuomi

EASY

ONE SIZE FITS MOST

YARN

Rios by Malabrigo, 3 ½ oz/100g hanks,
each approx 210yd/192m (superwash merino wool)

- 1 hank each in #52 Paris Night (A) and #138 Ivy (B)

NEEDLES

- One each size 5 and 7 (3.75 and 4.5mm) circular needle, each 16"/40cm long OR SIZE TO OBTAIN GAUGE
- One set (5) size 7 (4.5mm) double-pointed needles (dpn)

NOTIONS

- Stitch marker
- Tapestry needle

MEASUREMENTS

Brim circumference 19"/48cm

Depth 8"/20.5cm

GAUGE

20 sts and 26 rnds = 4"/10cm over
stranded color pat using size 7 (4.5mm) needle.
TAKE TIME TO CHECK YOUR GAUGE

NOTE Hat is featured in both colorways using Paris Night as color A with Ivy as color B and Ivy as color A with Paris Night as color B.

HAT

Beg at the lower edge with circular needle and A, cast on 96 sts. Join to work in rnds, taking care not to twist sts on needle and pm to mark beg of rnds.

RND 1 *P1, k3; rep from * around.

Rep rnd 1 until piece measures 1 ¼"/3cm from beg.

BEGIN COLOR PATTERN

RND 1 *With A, k1; with B, k3; rep from * around.

RNDS 2-8 Rep rnd 1.

RNDS 9-11 With A only, knit all sts.

RNDS 12-18 Rep rnd 1.

RNDS 19-21 With A only, knit all sts.

RNDS 22–27 Rep rnd 1.

RNDS 28–30 With A only, knit all sts.

RNDS 31–35 Rep rnd 1.

RNDS 36 AND 37 With A only, knit all sts.

CROWN SHAPING

Cont with dpn as foll:

RND 38 With A, k24 on each of the 4 dpn.

DEC RND 39 *With A, k1; with B, k3; with A, k1; with B, k1, k2tog*; rep between *'s twice more on needle 1, then rep between *'s 3 times on each of needles 2, 3 and 4—12 sts dec'd and 84 sts.

RND 40 *With A, k1; with B, k3; with A, k1; with B, k2*; rep between *'s around.

DEC RND 41 *With A, k1; with B, k3; with A, k1; with B, ssk*; rep between *'s around—12 sts dec'd and 72 sts.
Rnd 42 *With A, k1; with B, k3; with A, k1; with B, k1*; rep between *'s around.

DEC RND 43 *With A, k1; with B, k3; with A, ssk*; rep between *'s around—12 sts dec'd and 60 sts.

RNDS 44 AND 45 With A, knit.

DEC RND 46 With A, k4, k2tog, *k3, k2tog*; rep between *'s around to the last 4 sts, end k3, then sl the first st from rnd to the RH needle and k2tog those last 2 sts—12 sts dec'd around 48 sts.

DEC RND 47 *With B, k1, k2tog; with A, k1*; rep between *'s around—12 sts dec'd and 36 sts.

RND 48 *With B, k2; with A, k1*; rep between *'s around.

DEC RND 49 *With B, ssk; with A, k1*; rep between *'s around—12 sts dec'd and 24 sts.

RND 50 *With B, k1; with A, k1*; rep between *'s around.

DEC RND 51 With A, k2tog around—12 sts rem.

RND 52 With A, knit.

Cut yarn leaving a long end.

FINISHING

Pull end through rem sts on dpn, then pull through sts once again and tighten to secure the top. Using tapestry needle, weave in ends on the WS. Lay finished hat on a wet terry-cloth towel; steam lightly with iron on both sides. Leave hat to dry. ♦







Waterfront

TEXTURED RIB COWL

Designed by Jennifer Dassau

EASY







YARN

Rios by Malabrigo, 3½ oz/100g hanks,
each approx 210yd/192m (superwash merino wool)
• 2 hanks in #27 Bobby Blue

NEEDLES

• One size 8 (5 mm) circular needle, 24"/60cm long
OR SIZE TO OBTAIN GAUGE

NOTIONS

- Stitch marker
- Tapestry needle

MEASUREMENTS

Width around 28½"/72.5cm
Depth 11½"/29cm

GAUGES

- 18 sts and 22 rnds = 4"/10cm over elongated broken rib pattern
 - 17 sts and 24 rnds = 4"/10cm over k1, p1 rib pattern, using size 8 (5mm) needle, after light blocking.
- TAKE TIME TO CHECK GAUGES

NOTE Pattern is reversible and can be worn on either side.

K1, P1 RIB PATTERN

(Worked in rnds over an even number of sts)

RND 1 *K1, p1; rep from * around.
Rep rnd 1 for k1, p1 rib pattern.

SLIP STITCH PATTERN

(Worked in rnds over an even number of sts)

RND 1 Knit.

RND 2 Purl.

RND 3 *K1, sl 1 st wyif; rep from * around.

RNDS 4, 5 AND 6 Rep rnd 3.
Rep rnds 1–6 for slip stitch pattern.

BROKEN RIB PATTERN

(Worked in rnds over an even number of sts)

RND 1 Knit.

RND 2 *K1, p1; rep from * around.
Rep rnds 1 and 2 for broken rib pattern.

ELONGATED BROKEN RIB PATTERN

(Worked in rnds over an even number of sts)

RND 1 Knit.

RND 2 *K1, p1; rep from * around.

RND 3 Rep rnd 2.

Rep rnds 1–3 for elongated broken rib pattern.

COWL

Beg at the lower edge with circular needle, cast on 128 sts.
Join to work in rnds, taking care not to twist sts on needle
and pm to mark beg of rnds.

Work in k1, p1 rib pattern for 10 rnds.

Work rnds 1–6 of slip stitch pattern 3 times (18 rnds total).
Knit 1 rnd.

Work rnds 1 and 2 of broken rib pattern 3 times
(6 rnds total).

Work rnds 1–6 of slip-stitch pattern 3 times
(18 rnds in total).

Knit 1 rnd.

Work rnds 1–3 of elongated broken rib pattern 3 times
(9 rnds in total).

Work rnds 1–6 of slip stitch pattern 3 times (18 rnds total).
Knit 1 rnd.

Work rnds 1 and 2 of broken rib pattern 3 times
(6 rnds total).

Work rnds 1–6 of slip stitch pattern 3 times
(18 rnds in total).

Knit 1 rnd, purl 1 rnd.

Work in k1, p1 rib pattern for 8 rnds.
Bind off knitwise.

FINISHING

Using tapestry needle, weave in ends on the WS.

Lay the finished piece on a wet terry-cloth towel; steam
lightly to measurements. Leave cowl to dry. Wear on
either side, as desired. ♦





Clement

LACE-EDGED SHAWL

Designed by Brenda Castiel

INTERMEDIATE

YARN

Rios by Malabrigo, 3.5oz/100g hanks,
each approx 210yd/192m (superwash merino wool)

- 1 hank each in #850 Archangel (A) and #121 Marte (B)

NEEDLES

- One pair size 9 (5.5mm) needles,
OR SIZE TO OBTAIN GAUGE

MEASUREMENTS

Width 43"/109cm

Length at center 17"/43cm

GAUGE

16 sts and 22 rows = 4"/10cm over St st
using size 9 (5.5mm) needles.

TAKE TIME TO CHECK YOUR GAUGE.

STITCH GLOSSARY

MAKE 7 ([K1, yo] 3 times, k1) into next st—7 sts
made from 1 st.

JOINING ST Insert LH needle into a st from edge and k1,
pass 2nd st on RH needle over picked-up st.

SHAWL

FIRST HALF

With A, cast on 3 sts.

ROW 1 (INC RS) Kfb, k to end— st inc'd.

ROW 2 (WS) Knit.

Rep last 2 rows twice more—6 sts.

ROW 7 Kfb, k to last 5 sts, k2tog, yo, k3—7 sts.

ROW 8 Knit.

ROW 9 Sl 1, kfb, k to last 5 sts, k2tog, yo, k3—1 st inc'd.

ROW 10 Knit.

ROWS 11-14 Rep rows 9 and 10 twice more—10 sts.

ROW 15 (RS) Sl 1, kfb, k1, yo, k2tog, k to last 5 sts, k2tog, yo, k3—1 st inc'd.

ROW 16 Sl 1, k2, p to last 4 sts, k4.

Rep last 2 rows 7 times more—18 sts.

ROW 31 (RS) Sl 1, k1, k2tog, yo, k to last 3 sts, yo, k3—19 sts.

ROW 32 Sl 1, k2, purl to last 4 sts, k4.

ROW 33 Sl 1, k1, k2tog, yo, k to last 3 sts, yo, k3—1 st inc'd.

ROW 34 Rep row 32.

Rep last 2 rows 34 times—54 sts.

CENTER

ROW 1 (RS) Sl 1, k1, k2tog, yo, k to last 5 sts, k2tog, yo, k3.

ROW 2 Sl 1, k to end.

Rep rows 1 and 2 eleven times more.

SECOND HALF

ROW 1 (RS) Sl 1, k1, k2tog, yo, k to last 6 sts, k3tog, yo, k3—1 st dec'd.

ROW 2 Sl 1, k2, purl to last 4 sts, k4.

Rep rows 1 and 2 for 43 times more—10 sts.

ROW 89 (RS) Sl 1, k2, [k2tog] twice, yo, k3—9 sts.

ROW 90 AND ALL WS ROWS Knit.

ROW 91 Sl 1, k1, [k2tog] twice, yo, k3—8 sts.

ROW 93 Sl 1, [k2tog] twice, yo, k3—7 sts.

ROW 95 [K2tog] twice, yo, k3—6 sts.

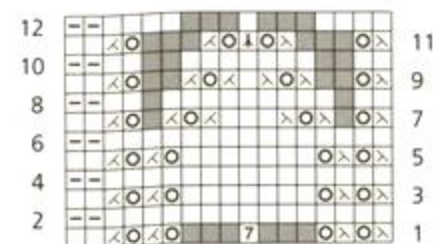
ROW 97 K1, k2tog, k3—5 sts.

ROW 99 K1, k2tog, k2—4 sts.

ROW 101 K2tog, k2—3 sts.

ROW 102 Knit.

Bind off.



11 sts inc'd to 17 sts, dec'd to 11 sts

Stitch Key

□ k on RS, p on WS

▢ p on RS, k on WS

⊗ k2tog

⊠ ssk

Ⓜ S2KP

⑦ make 7

⊙ yo

■ no stitch

LACE EDGING

With B, cast on 2 sts.

With WS of shawl facing, working along straight edge, beg at top of shawl, work as foll:

SET-UP ROW (WS) Kfb, k to last st, sl last st to RH needle, insert LH needle into a st from edge and k1, pass 2nd st on RH needle over picked-up st (called joining st)—3 sts.

ROW 1 (RS) Knit.

ROW 2 Kfb, k to last st, work joining st—1 st inc'd.

Rep last 2 rows twice more—6 sts.

ROW 7 Knit.

ROW 8 (WS) Kfb, k to last 4 sts, k2tog, yo, k1, work joining st—1 st inc'd.

Rep last 2 rows 4 times more—11 sts. Knit 2 rows.

BEG CHART

ROW 1 (RS) Work row 1 of chart.

ROW 2 Work chart to last st, work joining st.

Cont in chart as established through row 12, then rep rows 1–12 for 15 times more, joining to shawl edge at end of WS rows.

NEXT ROW (RS) Knit.

NEXT ROW K1, k2tog, k to last 4 sts, k2tog, yo, k1, sl last st to RH needle, with LH needle, pick up a st from edge, sl last st back to LH needle, knit tog with picked up st—1 st dec'd.

Rep last 2 rows 4 times—6 sts.

NEXT ROW Knit.

NEXT ROW K1, k2tog, k to last st, sl last st to RH needle, with LH needle, pick up a st from edge, sl last st back to LH needle, knit tog with picked up st—1 st dec'd.

Rep last 2 rows 3 times more—2 sts. Bind off.

Block lightly to measurements. ♦







Reuben

BOXY CARDIGAN

Designed by Mari Lynn Patrick

EASY

SIZED FOR SMALL, MEDIUM, LARGE, X-LARGE, XX-LARGE, 1X AND SHOWN IN SIZE MEDIUM.

YARN

Rios by Malabrigo, 3½ oz/100g hanks, each approx 210yd/192m (superwash merino wool)

- 3 (3, 4, 4, 4, 5) hanks each in #138 Ivy (A) and #27 Bobby Blue (B)

NEEDLES

- One pair size 8 (5mm) needles
- OR SIZE TO OBTAIN GAUGE
- One size 8 (5mm) circular needle, 24"/60cm long
- Two size 8 (5mm) double-pointed needles (dpn)

NOTIONS

- Stitch markers
- Stitch holders
- Two sets of size 3 sew-on snap closures
- Tapestry needle

MEASUREMENTS

Bust (closed) 47 (49, 50½, 52, 54, 55½)"/119 (124.5, 128, 132, 137, 141)cm
Length 22 (22½, 23, 23, 23, 23½)"/56 (57, 58.5, 58.5, 58.5, 59.5)cm
Width at upper arm 11 (12, 13, 14, 15, 17)"/28 (30, 33, 36, 38, 43)cm

GAUGES

- 20 sts and 40 rows = 4"/10cm over slip stitch border pat using size 8 (5mm) needles;
- 19 sts and 28 rows = 4"/10cm over textured striped pat using size 8 (5mm) needles.

TAKE TIME TO CHECK YOUR GAUGES.

SLIP-STITCH BORDER PATTERNS

(Over an even number of sts)

ROW 1 (WS) With A, k1 (selvage st), *k1, sl 1 purlwise wyib; rep from *, end k1 (selvage st).

ROW 2 (RS) With A, knit.

ROW 3 With B, k1 (selvage st), *sl 1 purlwise wyib, k1; rep from *, end k1 (selvage st).

ROW 4 With B, knit.

Rep rows 1–4 for slip stitch border pat.

TEXTURED STRIPE PATTERN STITCH

(Over a multiple of 4 sts plus 2)

ROWS 1 AND 3 (RS) With B, knit.

ROWS 2 AND 4 With B, purl.

ROW 5 With A, k3, *sl 2 wyif, k2; rep from *, end sl 2 wyif, k1.

ROW 6 With A, k1, *sl 2 wyif, k2; rep from *, end k1.

ROWS 7–10 With B, rep rows 1–4.

ROW 11 With A, knit.

ROW 12 With A, purl.

ROW 13 With B, rep row 5.

ROW 14 With B, rep row 6.

ROW 15 With A, knit.

ROW 16 With A, purl.

ROW 17 With B, knit.

ROW 18 With B, purl.

ROW 19 With A, rep row 6.

ROW 20 With A, rep row 5.

ROW 21 With B, knit.

ROW 22 With B, purl.

ROWS 23–44 Work as for rows 1–22, only change colors from A to B or B to A in every row.

Rep rows 1–44 for textured stripe pat st.

SLOPED BIND-OFF

When working a sloped bind-off, bind off sts on the first row in the usual way. Then, on the row preceding each consecutive bind-off row, sl the last st (wyib on RS rows, wyif on WS rows). On the next bind-off row, sl the first st over the 2nd st to bind off the first st, then bind off rem sts in the usual way.

BACK

With A, cast on 110 (114, 118, 122, 126, 130) sts.

Work in the slip-stitch border pat for 25 rows.

(The last row is row 1 of the pat in A).

With B, knit next RS row inc 4 sts evenly spaced—114 (118, 122, 126, 130, 134) sts.

Cont in textured stripe pat st until piece measures

14 (14, 14, 13 ½, 13, 12 ½)"/35.5 (35.5, 35.5, 34, 33, 32) cm from beg.

BEGIN SLEEVE OPENING

Cont in established pat st, cast-on 4 sts at beg of next 2 rows—122 (126, 130, 134, 138, 142) sts. Work even until the sleeve opening measures 5 ½ (6, 6 ½, 7, 7 ½, 8 ½)"/14 (15, 16.5, 18, 19, 21.5) cm.

SHAPE SHOULDERS

Using the sloped bind-off method, bind off 4 sts at beg of the next 14 rows—66 (70, 74, 78, 82, 86) sts. On the last WS row, using clip-on st markers, pm to mark the center 22 (22, 22, 22, 24, 24) sts.

SHAPE NECK AND SHOULDERS

NEXT ROW (RS) Bind off 4 sts, work to the center marked sts, join a 2nd ball of yarn and bind off center marked sts, work to end. Cont to work both sides with separate ball of yarn.

NEXT ROW (WS) Bind off 4 sts, work to end of first side; on 2nd side, bind off 5 sts from right neck edge, work to end of 2nd side. Working both sides at once, cont to bind off 6 (7, 8, 9, 10, 11) sts from each shoulder edge once, then 7 (8, 9, 10, 10, 11) sts once, AT SAME TIME, bind off 5 sts from the left neck edge on the first RS bind-off row.

LEFT FRONT

With A, cast on 64 (64, 68, 68, 72, 76) sts. Work in the slip-stitch border pat for 25 rows.

NEXT ROW (RS) With B, k54 (54, 58, 58, 62, 66) sts, then sl the last 10 sts to a st holder. Cont in textured stripe pat st until piece measures same as back to sleeve opening.

BEGIN SLEEVE OPENING

NEXT ROW (RS) Cast on 4 sts, work to end—58 (58, 62, 62, 66, 70) sts. Work even until the sleeve opening measures 4 ¼ (4 ¾, 5 ¼, 5 ¾, 6 ¼, 7 ¼)"/10.5 (12, 13.5, 14.5, 16, 18.5)cm, end with a RS row.

SHAPE NECK

NEXT ROW (WS) Bind off 3 (3, 3, 3, 3, 4) sts, work to end. Cont to shape neck binding off 2 (0, 2, 0, 3, 4) sts from neck edge once more then dec 1 st every row on the next 6 rows, dec 1 st every other row on the next 2 RS rows, AT SAME TIME, when sleeve opening measures same as back, bind off 4 sts from the armhole edge (beg of RS rows) 8 times, then bind off 6 (7, 8, 9, 10, 11) sts once, 7 (8, 9, 10, 10, 11) sts once.

RIGHT FRONT

Cast on and work as for left front for 25 rows.

NEXT ROW (RS) Sl the first 10 sts to a st holder then join B and k to end on the 54 (54, 58, 58, 62, 66) sts. Work as for left front reversing all shaping.

FINISHING

Sew shoulder seams.

SLEEVE OPENING TRIMS

With RS facing and B, pick up and k 51 (56, 61, 65, 70, 79) sts evenly around sleeve opening. Knit 1 row, purl 1 row. Bind off knitwise. Leaving border trims free (for side slits), sew the side seams and underarm sleeve openings. Use extra reinforcement at the top of the slits to secure.

RIGHT CENTER FRONT BAND

With RS facing, circular needle and B, pick up and k 60 (62, 64, 64, 64, 67) sts along the center front edge. Sl the 10 sts from holder at lower edge to dpn.

JOINING ROW 1 (WS) K to the last st on the circular needle, then p the last st on needle tog with 1 st from the dpn, turn. **ROW 2 (RS)** Sl 1 wyib, k to end. Rep these 2 rows until all sts are joined. Bind off knitwise.

LEFT FRONT CENTER BAND

Pick up and k sts as for right front center band.

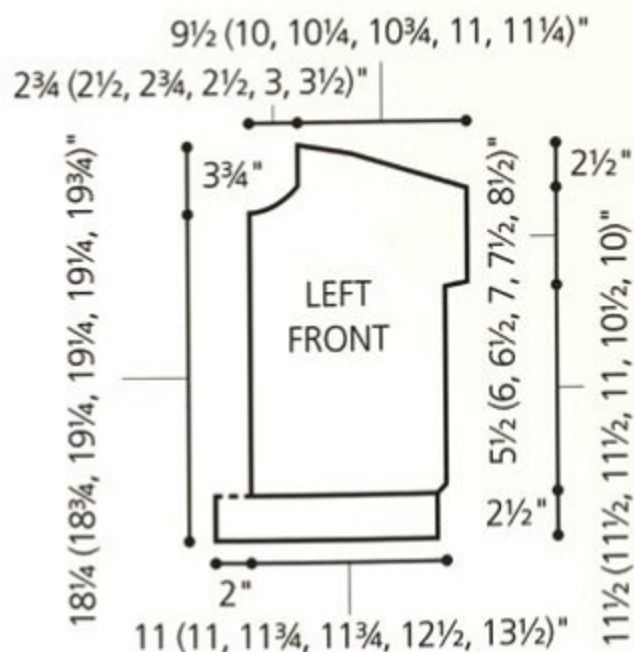
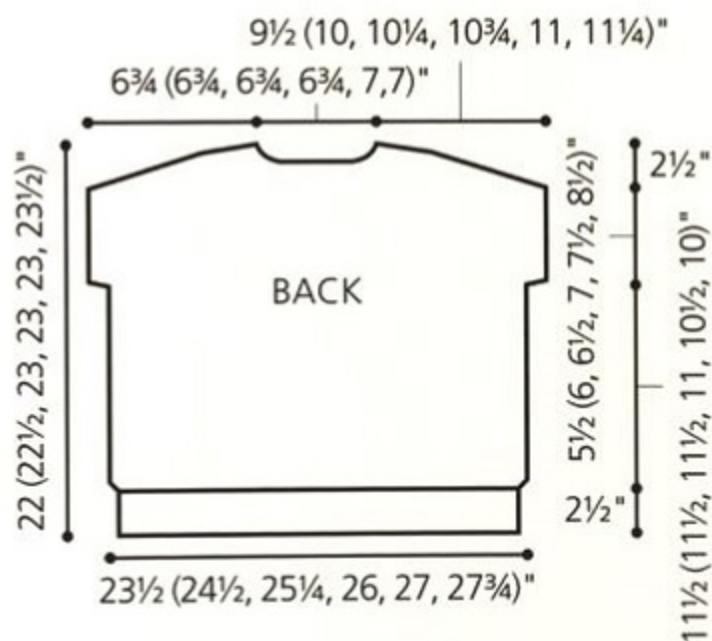
ROW 1 (WS) Knit.

JOINING ROW 2 (RS) K to the last st on the circular needle, then SKP this st tog with 1 st from the dpn, turn.

ROW 3 (WS) Sl 1 purlwise wyif, k to end. Rep these 2 rows until all sts are joined. Bind off knitwise.

NECKBAND

With RS facing and B, pick up and 10 sts from top of right front band, 23 (22, 23, 22, 24, 26) sts from shaped front neck edge, 35 (35, 35, 35, 37, 37) sts from back neck edge, 23 (22, 23, 22, 24, 26) sts from shaped front neck edge, 10 sts from the top of left front band—101 (99, 101, 99, 105, 109) sts. Knit 1 row, purl 1 row, knit 1 row. Bind off purlwise. Using tapestry needle, weave in ends on WS. Lightly steam block the finished piece on the WS. Sew 2 sets of snaps to the inside neck edge at top of front bands, overlapping right front neck edge over the left. ♦





Abbreviations

KNIT ABBREVIATIONS

approx approximately
beg begin(ning)
CC contrast color
cn cable needle
cm centimeter(s)
cont continue(ing)
dec decrease(ing)
dpn double-pointed needle(s)
fol follow(s)(ing)
g gram(s)
inc increase(ing)
k knit
k2tog knit two stitches together
k3tog knit three stitches together
kfb knit into front and back of stitch
LH left-hand
M1 make one (see Glossary)
MC main color
m meter(s)
mm millimeter(s)
oz ounce(s)
p purl
p2tog purl two stitches together
pat(s) pattern(s)
pm place marker
rem remain(s)(ing)
rep repeat
RH right-hand

rnd(s) round(s)
RS right side
SKP see Glossary
sl slip
sl st slip stitch
sm slip marker
ssk slip, slip, knit (see Glossary)
st(s) stitch(es)
St st stockinette stitch (see Glossary)
tbl through back loop
tog together
WS wrong side
wyib with yarn in back
wyif with yarn in front
yd(s) yard(s)
yo yarn over
 * repeat directions following * as many times as indicated
 [] repeat directions inside brackets as many times as indicated

CROCHET ABBREVIATIONS

ch chain
sl st slip stitch
sc single crochet
hdc half-double crochet
dc double crochet
tr treble crochet

Knitting Needles

U.S.	METRIC
0	2mm
1	2.25mm
2	2.75mm
3	3.25mm
4	3.5mm
5	3.75mm
6	4mm
7	4.5mm
8	5mm
9	5.5mm
10	6mm
10½	6.5mm
11	8mm
13	9mm
15	10mm
17	12.75mm
19	15mm
35	19mm

***Note** The needle sizes used in this book vary, based on the design and desired drape of the fabric. They may be different than the suggested needle size on the ball band. To achieve the look of the pictured garment, always make a gauge swatch and change the needle size to obtain the gauge given at the beginning of the instructions.



Distributors

USA

Malabrigo
www.malabrigoyarn.com

Europe

Malabrigo
www.malabrigoyarn.com

Canada

Diamond Yarn
www.diamonyarn.com

Finland

Lankatalo Priima
www.lankatalopriima.com

Russia

Primar Hobby, LLC
www.vk.com/malabrigo

Sweden

Hamilton Designs
www.corneliahamilton.com

Big Sellers

Hana Trading Co.

42-472 Ihyeondong
 Seogu, Daegu
 Korea

Gosyo Co. Ltd.

20 Nishikanemaru, Kita gata-cho
 Ichicomiya City, Aichi Pref.
 Japan 493-8001

Glossary

Garner stitch Knit every row.

For circular knitting: Alternate knit one round, purl one round.

Make one Insert tip of LH needle from front to back under the strand between the last stitch worked and the next stitch on the needle. Knit into the back loop to

increase one stitch.

SKP slip 1, knit 1, pass slip stitch over knit 1—1 st dec'd.

SK2P slip 1, knit 2 stitches together, pass slip stitch over k2tog—2 sts dec'd.

ssk Slip next two sts knitwise, one at a time, to right-hand needle. Insert tip of

left-hand needle into fronts of these sts from left to right and knit them together—1 st dec'd.

St st Knit right-side rows and purl wrong-side rows. For circular knitting: Knit all rounds.

CREDITS Photographer: ROSE CALLAHAN Hair and Makeup: ELENA LYAKIR Creative Director: DIANE LAMPHRON Technical Editors: CARLA SCOTT, MARI LYNN PATRICK, LORETTA DACHMAN Fashion Stylist: JOSEFINA GARCIA Yarn Coordinator: MATTHEW SCHRANK



