



LIGHTWOOD COWL

by Jenn Steingass

Share on Instagram: [#lightwoodcowl](#) [#knitlovewool](#)

Directions

This easy loop cowl is knit in the round in a tube. The floats are hidden inside so no need to catch them! The colorwork chart is easy and fun yet engaging and easy to memorize. The cowl begins with a provisional cast on and the 2 live edges are grafted together with kitchener to form a continuous loop.

Size

One Size

Finished Measurements

10" / 25.5 cm wide x 30" / 76.5 cm long.

(Note: knitted tube is approximately 20" / 51 cm in circumference and is 10" / 25.5 cm wide when measured flat. Once ends of cowl have been joined together in the last step, it measures 16" / 40.5 cm long when measured flat.

Yarn

2 skeins of Magpie Fibers Swanky Sock, 80% Superwash Merino, 10% Cashmere, 10% Nylon, fingering weight. 400 yds / 115 g per skein. Colorway: Follow You into the Dark

Spincycle Yarns Dyed in the Wool, 100% Superwash US Wool, sport weight. 200 yds / 183 m per skein.

1 skein in colorway Stay Out of the Forest

1 skein in colorway Rusted Rainbow

Or Fingering or sport weight wool or wool blend yarn:

Approx. 550 yds / 503 m of Main Color (MC)

Approx. 280 yds / 256 m of Coordinating Color (CC)

Needles

Size US 4 / 3.5 mm 16" / 40 cm circular needle. **Note:** you will need a second needle of the same size for the last step, to finish the cowl.

Gauge

30 sts and 26 rows = 4" / 10 cm

Notions

1 stitch marker, crochet hook, fingering weight waste yarn, tapestry needle.

Abbreviations and Techniques

BO: Bind Off

BOR: Beginning of Round

CC: Coordinating Color

CO: Cast On

MC: Main Color

RND: Round

STS: Stitches

DIRECTIONS

Starting with a provisional cast on, this cowl is knit in the round, lengthwise, and in a tube while following an easy to knit stranded colorwork chart. Once the desired length of the cowl has been reached, the two ends of the cowl are grafted together with kitchener stitch.

Setup

Using fingering or sport weight waste yarn, cast on 152 sts with crochet provisional cast on. See tutorial here: <https://www.youtube.com/watch?v=Nnu1kk8dUj0> If you don't have a crochet hook, I suggest the COWYAK method – see tutorial [here](#).

Place BOR marker. Join MC and knit 1 rnd even.

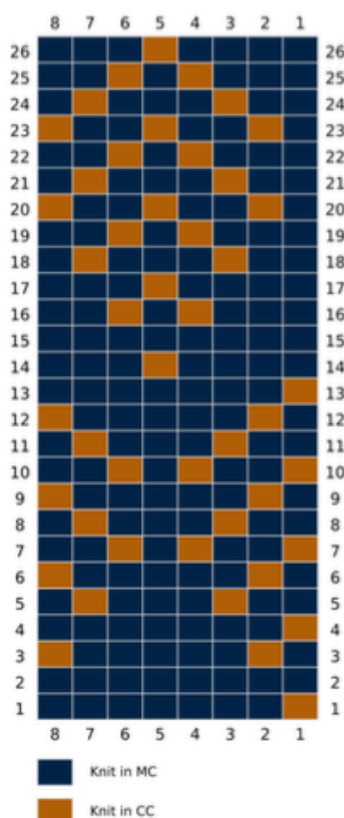


Stranded Colorwork Tips:

- Work chart from right to left and bottom to top.
- Join CC on stitch 1 of chart.
- No need to catch your floats! The floats (strands of coordinating color yarn) will all be hidden inside the cowl since this piece is knit in the round and in a tube.
- For optimal color dominance, hold CC strand to the left, and MC strand to the right, making sure your CC strand runs underneath the MC strand when looking at the wrong side of your work.

Work colorwork chart, repeating sts 1-8 of this chart 19 times per rnd. Once you have completed rnd 26 of chart, begin again at rnd 1. Continue knitting the entire chart from bottom to top 6 more times. Work the chart one more time but end after completing rnd 13. You should have 15 rows of individual tree/feather motifs and the cowl should measure about 30" / 76 cm, approx 195 rnds.

How to add length, if desired: keep continuing rnds 1-26 of chart, until cowl is approx 2" / 5 cm shorter than desired final length, then knit rnds 1-13 of chart one more time.



Break CC and knit 1 rnd even in MC.

Unzip provisional cast on and thread waste yarn through live stitches with tapestry needle. Thread waste yarn through the other end of cowl that you just finished knitting. Leave a strand of MC at least 80" long for grafting ends together.

For best results, block cowl before grafting edges together. Lay flat to dry – I suggest pointing a fan at your cowl so it dries faster!

FINISHING

Once dry, transfer live stitches of each end of cowl to a set of 16" / 40 cm circular needles in the same size that you used to knit the cowl. Graft right sides of cowl together using kitchener stitch. Your needles should be pointed to the right and your strand of MC for grafting should be coming from the back needle. Tutorial for kitchener stitch [here](#).

If desired, wet block your cowl one more time. I suggest pointing a fan at your cowl because it will be thick!

I hope you enjoy!

