

L A I N E



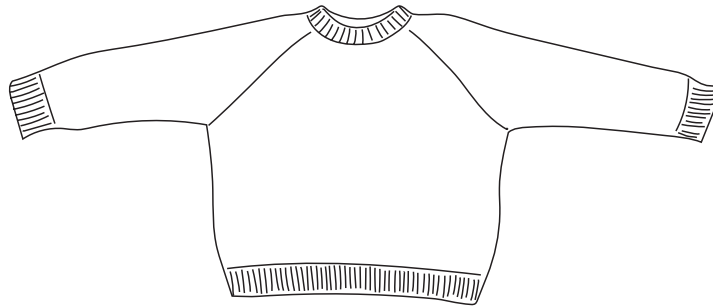
LENTO

It always starts with the yarn: something in it, be it colour or texture, that evokes an idea in my mind which I shape into a pattern – most often a sweater.

Lento reminds me of homey landscapes: pine forests, cottage docks and sand roads.

LENTO

1 2 3 4



Sizes

1 (2, 3, 4, 5) (6, 7, 8, 9)

Recommended ease: approx. 5" / 12.5 cm of positive ease.

Finished measurements

Bust circumference: 38.5 (42.75, 45.25, 48, 50.75) (55.5, 59.75, 63.5, 67.25)" / 96 (107, 113, 120, 127) (139, 149, 159, 168) cm.

Upper arm circumference: 15 (16.5, 17, 18.75, 19.75) (20.75, 22.5, 23, 24)" / 37 (41, 43, 47, 49) (52, 56, 57, 60) cm.

Length from underarm to hem: 10.5" / 26.5 cm or desired length.

Sleeve length from underarm: 14.5" / 36.5 cm or desired length.

Materials

Yarn: 2 (2, 3, 3, 3) (3, 3, 4, 4) skeins of Merino Singles by La Bien Aimée (100% merino, 400 yds / 366 m – 100 g), colourway: Jonna (green), Amege (blue).

3 (3, 3, 3, 4) (4, 4, 4, 5) skeins of Kumo by La Bien Aimée (74% suri alpaca, 26% silk,

328 yds / 300 m – 50 g), colourway: Jonna (green), Winterfell (blue).

Or approx. 703 (800, 852, 912, 976) (1067, 1163, 1220, 1302) yds / 643 (732, 779, 835, 893) (976, 1064, 1116, 1192) m of fingering weight yarn. And 732 (833, 887, 950, 1016) (1111, 1211, 1270, 1356) yds / 670 (762, 811, 869, 929) (1016, 1107, 1162, 1240) m of lace weight yarn.

Needles: US 6 / 4 mm circular needles for ribbing, US 10 / 6 mm circular needles for Stockinette Stitch. An extra circular needle for the provisional cast-on in the neckline.

Notions: 5 stitch markers, tapestry needle, scrap yarn.

Gauge

15 sts x 21 rows to 4" / 10 cm on 6 mm needles in St St, after blocking.

Notes

The sweater is knitted with both yarns held together.

LENTO

1 2 3 4



Directions

Lento is knitted from the top down in the round with raglan increases. The yoke is shaped with short rows. After the yoke is completed, the work is divided into the body and sleeves, which are then knitted separately in the round.

Neckline

Using US 6 / 4 mm needles, a piece of scrap yarn and using the Provisional Cast-On Method, CO 74 (78, 82, 90, 92) (94, 98, 100, 102) sts with both yarns held together.

Set-up row (RS): K all sts and join to work in the rnd. Place BOR m.

Rnd 1: *K1, p1*, rep *-* to BOR.
Work rnd 1, 17 more times (= a total of 18 rnds).

Unravel the Provisional Cast-On and place the stitches onto another circular needle of the same or smaller size. Place the top and bottom edge of the neckline ribbing next to each other.

Using US 10 / 6 mm needles, knit the stitches from the front and back needles together. At the same time, place markers for the raglan increases as follows: k13 (14, 15, 16, 17) (17, 17, 18, 18), PM, k10 (10, 10, 12, 12) (12, 14, 14, 14), PM, k27 (29, 31, 33, 34) (35, 35, 36, 37), PM, k10 (10, 10, 12, 12) (12, 14, 14, 14), PM, k14 (15, 16, 17, 17) (18, 18, 18, 19).

You are now at the BOR marker.

LENTO

1 2 3 4



Yoke

Short row 1: *K to 1 st bef m, kfb, SM, k1, kfb*, rep *-* once more, k2, turn.

Short row 2: MDS, p to BOR, *p to 2 sts bef m, pfb, p1, SM, pfb*, rep *-* once more, p2, turn.

Short row 3: MDS, k to BOR, *k to 1 st bef m, kfb, SM, k1, kfb*, rep *-* once more, k to DS, k DS, k2, turn.

Short row 4: MDS, p to BOR, *p to 2 sts bef m, pfb, p1, SM, pfb*, rep *-* once more, p to DS, p DS, p2, turn.

Work short rows 3–4 twice more.

MDS, then, k to BOR. You have now worked the short rows and will continue knitting in the round.

Next rnd (inc rnd): *K to 1 st bef m, kfb, SM, k1, kfb*, rep *-* 3 more times. K to BOR.

Next rnd (no inc's): K.

Work these two rounds 16 (18, 19, 19, 20) (19, 18, 16, 16) more times. You now have 242 (262, 274, 282, 292) (286, 282, 268, 270) sts [front and back: 69 (75, 79, 81, 84) (83, 81, 78, 79) sts each, sleeves: 52 (56, 58, 60, 62) (60, 60, 56, 56) sts each].

Sizes 6, 7, 8 and 9 only

Next rnd (inc rnd): *K to 1 st bef m, kfb, SM, k1, kfb*, rep *-* 3 more times. K to BOR.

Next rnd (body inc's): *K to 1 st bef m, kfb, SM, k to m, SM, k1, kfb*, rep *-* once more. K to BOR.

Work these two rounds – (–, –, –, –) (1, 3, 5, 6) more time(s). You now have – (–, –, –, –) (310, 330, 340, 354) sts [front and back: – (–, –, –, –) (91, 97, 102, 107) sts each, sleeves: – (–, –, –, –) (64, 68, 68, 70) sts each].

Separating the body and sleeves

K to next m, RM, place all sts between the removed m and the next m on a piece of scrap yarn and RM. CO 3 (5, 6, 9, 11) (13, 15, 17, 19) underarm sts. Rep *-* once more, k to BOR.

144 (160, 170, 180, 190) (208, 224, 238, 252) sts for body.

LENTO

4
3
2
1

Body

Work in Stockinette Stitch (knit all sts) until the body measures approx. 8.25" / 21 cm, or 2.25" / 5.5 cm less than desired length.

Change to smaller needles and begin hem ribbing: K1, p1.

Work ribbing for a total of 14 rnds and loosely bind off in pattern.

Sleeves

Place the 52 (56, 58, 60, 62) (64, 68, 68, 70) sleeve sts from scrap yarn onto US10 / 6 mm needles. Starting from the center of the sts casted on in the underarm, pick up and k 2 (3, 3, 5, 6) (7, 8, 9, 10) sts. K

the 52 (56, 58, 60, 62) (64, 68, 68, 70) sts on the needle. Pick up and k 2 (3, 3, 5, 6) (7, 8, 9, 10) more sts from the underarm. Place marker for BOR.

(Note! In some sizes the underarm cast on stitch count doesn't match the stitches picked up. You always pick an even number so that the stitch count works with the cuff ribbing.)

56 (62, 64, 70, 74) (78, 84, 86, 90) sts.

Rnd 1: K.

Dec rnd: K1, k2tog, k to 3 sts bef m, ssk, k1.

Work 4 (4, 4, 4, 4) (3, 3, 3, 3) rnds in Stockinette Stitch and then work another decrease round. Rep *—* 6 (6, 7, 8, 10)

(11, 13, 14, 15) more times. 42 (48, 48, 52, 52) (54, 56, 56, 58) sts.

Work in Stockinette Stitch (knit all sts) without decreases, until the sleeve measures approx. 12.25" / 31 cm, or 2.25" / 5.5 cm less than desired length.

Change to smaller needles and begin cuff ribbing: K1, p1.

Work ribbing for a total of 14 rnds and loosely bind off in pattern.

Finishing

Weave in ends. Block or steam the sweater to measurements.

Abbreviations

bef Before

BOR Beginning of the round

CO Cast on

DS Double stitch

inc('d) Increase('d) / increasing

k Knit

k2tog Knit 2 stitches together (1 stitch decreased)

kDS Knit double stitch: Knit both legs together

kfb Knit into the front of the stitch without dropping it from the needle, then knit into the back of the same stitch, then drop it from the needle (1 stitch increased)

m Marker

MDS Make double stitch: Slip the next stitch with yarn in front. Bring the yarn over the right needle to the back and pull on the slipped stitch until it looks like a double stitch (two legs)

p Purl

pDS Purl double stitch: Purl both legs together

pfb Purl into the front of the stitch without dropping it from the needle, then purl into

the back of the same stitch, then drop it from the needle (1 stitch increased)

PM Place marker

Rep Repeat

RS Right side

rnd(s) Round(s)

SM Slip marker

ssk Slip, slip, knit: Slip 2 stitches one at a time as if to knit, knit them together through back loops (1 stitch decreased)

St St Stockinette Stitch

WS Wrong side