

Knitted Scarf "Venice" © 2014 Tashashu Gordon

Abbreviations:

BO = bind off
CO = cast on
k = knit
p = purl
rep = repeat
sl1k = slip a stitch knit-wise
st(s) = stitch (es)
RS = right side
WS = wrong side
w&t = wrap and turn

Yarn: AHHA 16 (100g – 530m) or

It's possible to use yarn of different colors and thickness. This is a great project to use up odds and ends of yarn. You can also use this scarf's stitch pattern to knit different items. It's possible to use two or several colors of yarn.

Needles: circular needle 2mm.

Size: width / length - optional

Construction note:

Selvedge stitches: The first stitch of every row is always slipped, the last purl.

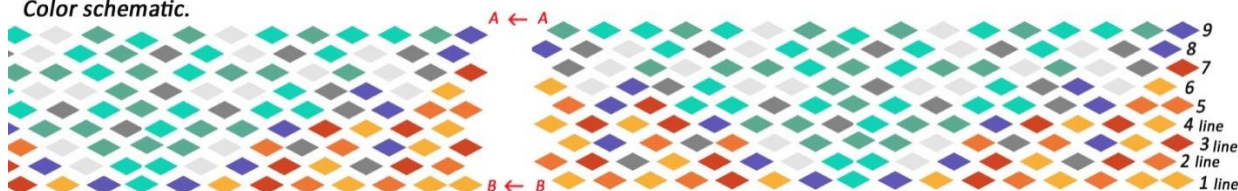
Turning: I used "wrap and turn" (knit the indicated number of sts, wrap working yarn around next stitch, turn and knit back in the opposite direction), but any other short-row turn works just as well.

I recommend you to begin with knitting one leaf from the yarn that you will use lately. Measure it's length and width. This will enable you to find out the quantity of leaves you need to cast on stitches for. Sample leaf knit scheme without repeats (32 sts+2sts).

It's possible to cast on stitches for the whole length of the scarf. But this pattern contains many turns and probably it won't be comfortable to knit it with too many stitches. That's why I advice you to knit the scarf from two or three pieces. Connect the "A" to "A" and "B" to "B" and then seamed. (see Color Schematic)



Color schematic.



Row-by row description:

The first line of the leaves:

Color "A" - CO 512 sts (a multiple of 32 sts+2sts) or optionally, but keep the multiplicity of 32sts + 2sts.

Row 1 (RS): sl1k; * k30, w&t/ k28, w&t/ k26, w&t/ k24, w&t/ **color change "B"**- k22, w&t/ k20, w&t/ k18, w&t/ k16, w&t/ k14, w&t/ k12, w&t/ k10, w&t/ k8, w&t/ k7, w&t/ k8, w&t/ k10, w&t/ k12, w&t/ k14, w&t/ k16, w&t/ k18, w&t/ k20, w&t/ **color change "A"**- k22, w&t/ k24, w&t/ k26, w&t/ k28, w&t/ k31*- (see photos 1,2,3); **without turning!**, rep from * to * 15 more time; k1, CO 16sts (see photo 4).

Row 2 (WS): purl one row.

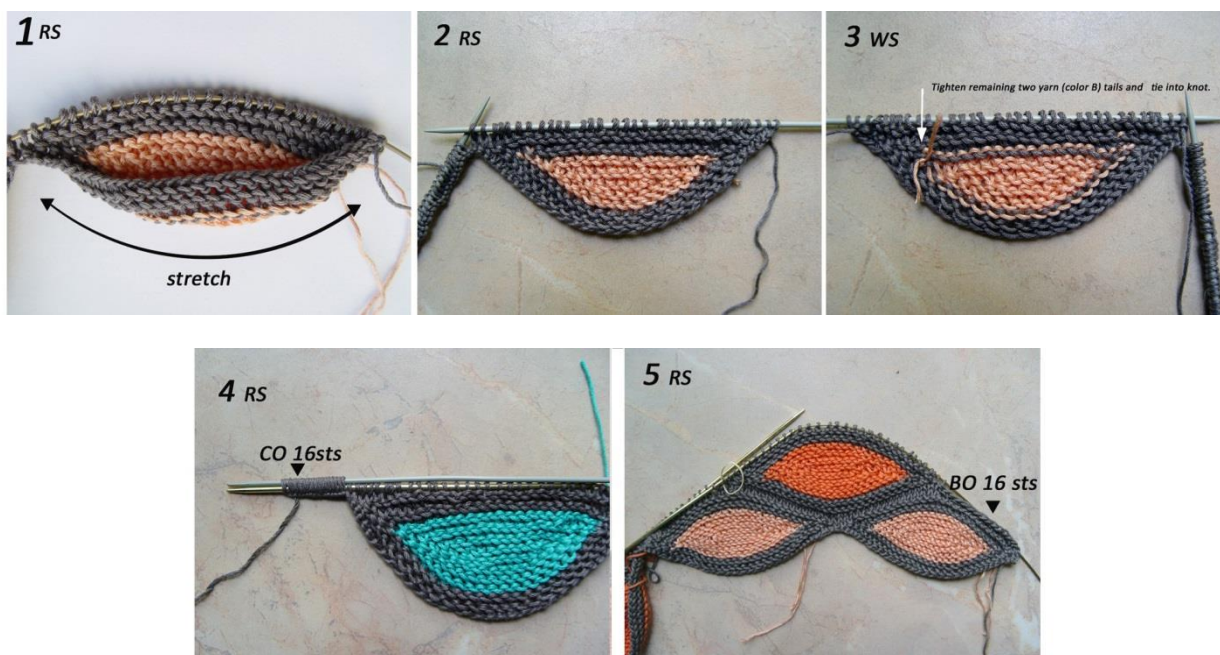
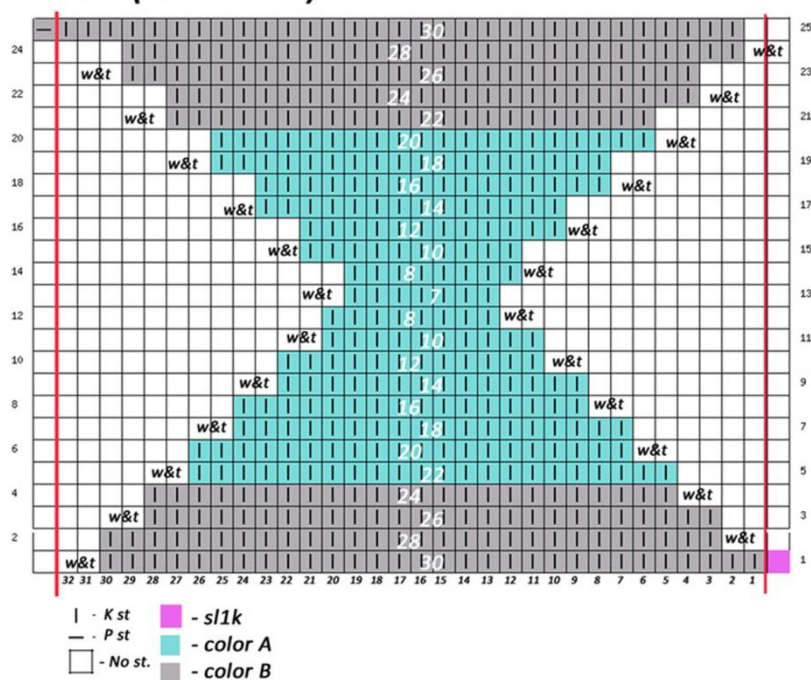
The second line of the leaves:

Row 3 (RS): BO 16sts (now 1 st on right needle) ; * k30, w&t/ k28, w&t/ k26, w&t/ k24, w&t/ **color change "B"**- k22, w&t/ k20, w&t/ k18, w&t/ k16, w&t/ k14, w&t/ k12, w&t/ k10, w&t/ k8, w&t/ k7, w&t/ k8, w&t/ k10, w&t/ k12, w&t/ k14, w&t/ k16, w&t/ k18, w&t/ k20, w&t/ **color change "A"**- k22, w&t/ k24, w&t/ k26, w&t/ k28, w&t/ k31*; (see photo 5) without turning!, rep from * to * 15 more time; p1.

Row 4 (WS): BO 16sts (now 1 st on right needle); purl one row; **without turning!**, CO 16sts.
3, 5, 7, 9 lines similar to knit 1 line; 4, 6, 8 lines similar to knit 2 line. BO all sts.

Knitted Scarf "Venice" © 2014 Tashashu Gordon

Chart (motif leaf) 32 sts.



Thank you and happy Knitting!