

## Knitted shawl "Blue Willow"



**Size:** one size (240cm x 65cm)

**Yarn:** Zitron Filigran Lace№1 Color 2509 (100 g / 600 m) 120 g. (yarn A)

Zitron Filigran Lace№1 Color 80 (100 g / 600 m) 140 g. (yarn B)

**Needles:** 2 mm.

**Crochet hook:** (for stalk leaf) 2mm.

**Notions:** 20 markers

## Construction:

The direction of knitting is shown with

black arrows in the schematic.

Selvedge stitches: The first stitch of every row is always slipped, the last purl.

Turning: I used "wrap and turn" (knit the indicated number of sts, wrap working yarn around next stitch, turn and knit back in the opposite direction), but any other short-row turn works just as well.

## Abbreviations:

**k** knit

**p** purl

**st(s)** stitch(es)

**RS** right side

**WS** wrong side

**yo** yarn over

**selv st** Selvedge stitches

**CO** Cast On

**k2tog** knit 2 stitches together. This is a decrease stitch done by knit the next 2 stitches together.

**BO** Bind Off

**pm** place marker

**sm** slip marker

**rep** repeat

## Row-by row descriptions for the different motifs

### Motif "Big leaf" – repeat 8

Cast on 50 sts.

Row 1: 1selv st, p 46, wrap and turn.

Row 2: k22, wrap and turn.

Row 3: k17, wrap and turn.

Row 4: k20, wrap and turn.

Row 5: k17, wrap and turn.

Row 6: k20, wrap and turn.

Row 7: k17, wrap and turn.

Row 8: k20, wrap and turn.

Row 9: k17, wrap and turn.

Row 10: k20, wrap and turn.

Row 11: k17, wrap and turn.

Row 12: k21, wrap and turn.

Row 13: k17, wrap and turn.

Row 14: k21, wrap and turn.

Row 15: k22, wrap and turn.

Row 16: k17, wrap and turn.

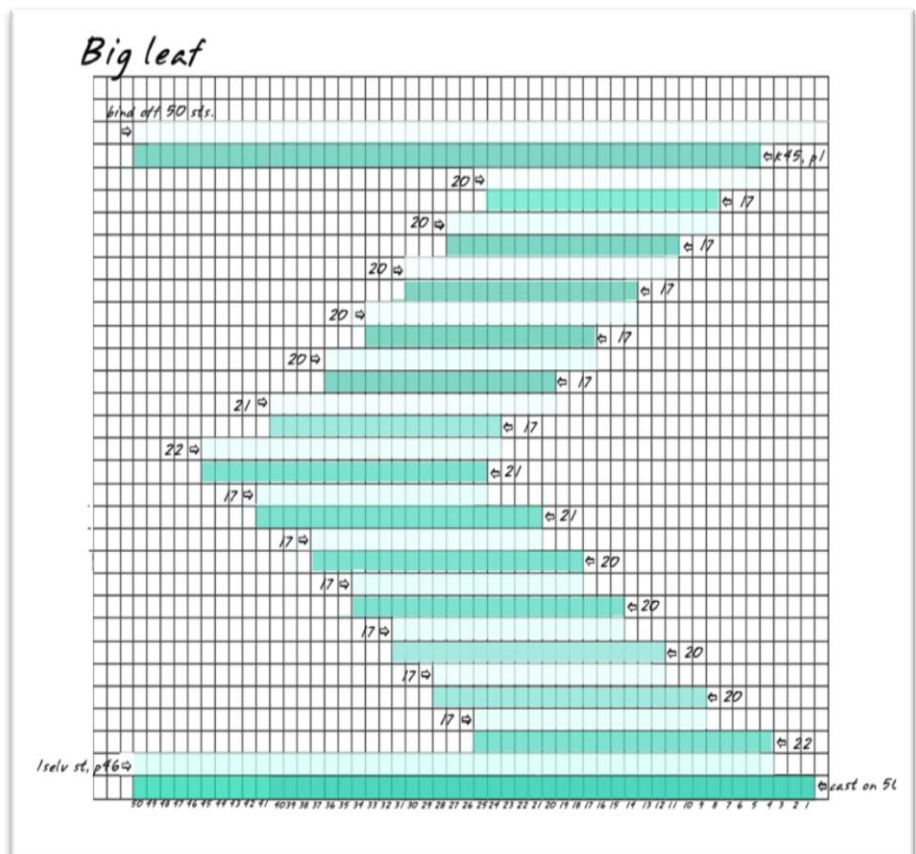
Row 17: k21, wrap and turn.

Row 18: k17, wrap and turn.

Row 19: k20, wrap and turn.

Row 20: k17, wrap and turn.

Row 21: k20, wrap and turn.



Row 22: k17, wrap and turn.

Row 23: k20, wrap and turn.

Row 24: k17, wrap and turn.

Row 25: k20, wrap and turn.

Row 26: k17, wrap and turn.

Row 27: k20, wrap and turn.

Row 28: k45, p1

Bind off 50 sts.

### Motif "Medium leaf" - rep 15

Cast on 40.

Row 1: 1 selv st, p35, wrap and turn.

Row 2: k16, wrap and turn.

Row 3: k13, wrap and turn.

Row 4: k15, wrap and turn.

Row 5: k13, wrap and turn.

Row 6: k15, wrap and turn.

Row 7: k13, wrap and turn.

Row 8: k16, wrap and turn.

Row 9: k13, wrap and turn.

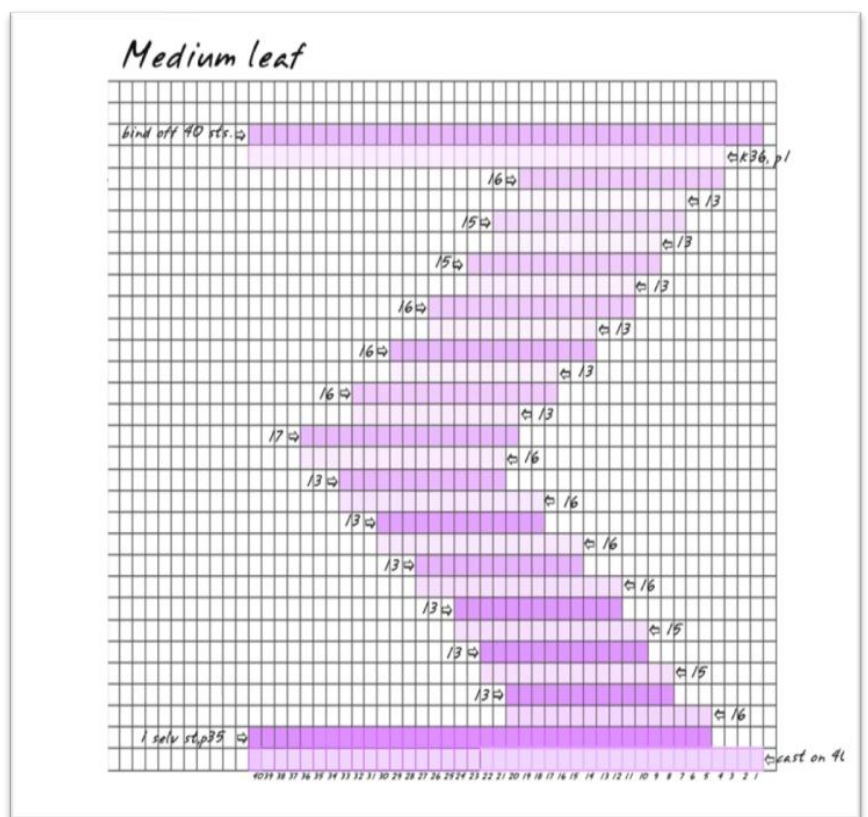
Row 10: k16, wrap and turn.

Row 11: k13, wrap and turn.

Row 12: k16, wrap and turn.

Row 13: k13, wrap and turn.

Row 14: k16, wrap and turn.



Row 15: k17, wrap and turn.

Row 16: k13, wrap and turn.

Row 17: k16, wrap and turn.

Row 18: k13, wrap and turn.

Row 19: k16, wrap and turn.

Row 20: k13, wrap and turn.

Row 21: k16, wrap and turn.

Row 22: k13, wrap and turn.

Row 23: k15, wrap and turn.

Row 24: k13, wrap and turn.

Row 25: k15, wrap and turn.

Row 26: k13, wrap and turn.

Row 27: k16, wrap and turn.

Row 28: k36, p1

Bind off 40 sts.

### Motif "Small leaf" - rep 11

Cast on 30.

Row 1: 1 selv st, p26, wrap and turn.

Row 2: k12, wrap and turn.

Row 3: k7, wrap and turn.

Row 4: k10, wrap and turn.

Row 5: k7, wrap and turn.

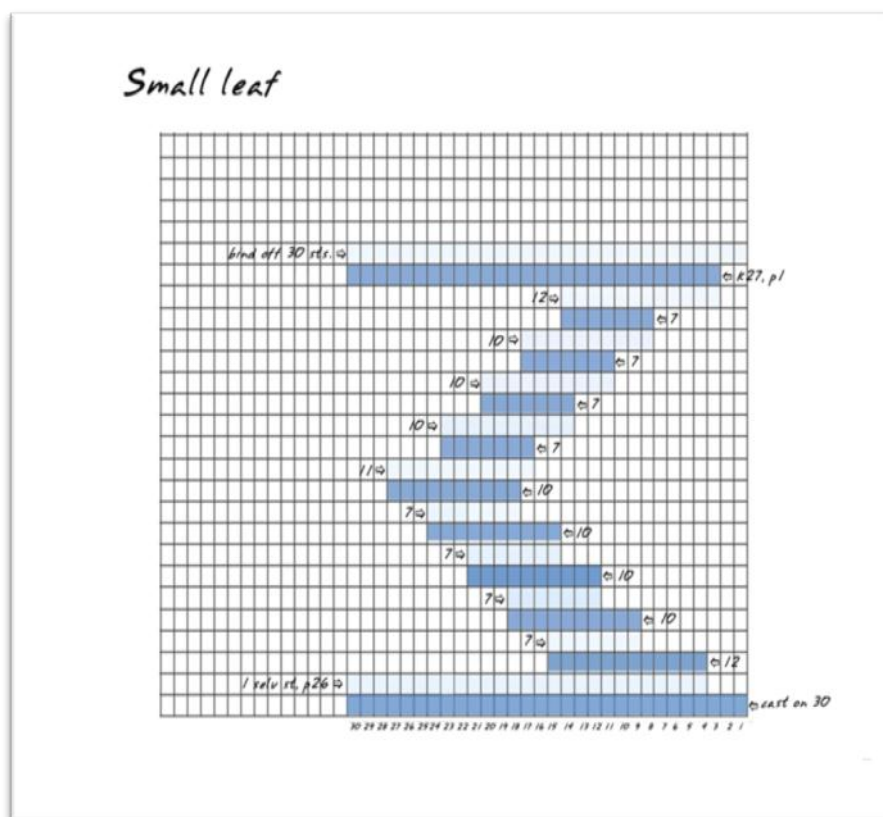
Row 6: k10, wrap and turn.

Row 7: k7, wrap and turn.

Row 8: k10, wrap and turn.

Row 9: k7, wrap and turn.

Row 10: k10, wrap and turn.





Row 11: k11, wrap and turn.

Row 12: k7, wrap and turn.

Row 13: k10, wrap and turn.

Row 14: k7, wrap and turn.

Row 15: k10, wrap and turn.

Row 16: k7, wrap and turn.

Row 17: k10, wrap and turn.

Row 18: k7, wrap and turn.

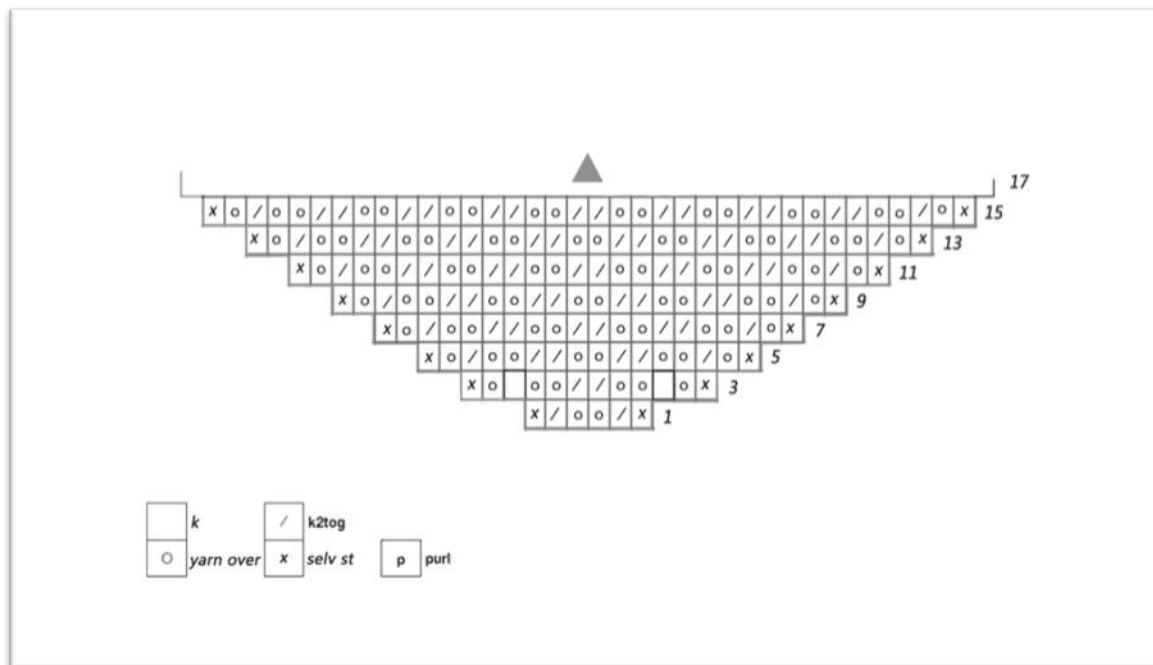
Row 19: k12, wrap and turn.

Row 20: k27, p1

Bind off 30 sts.

### Instructions:

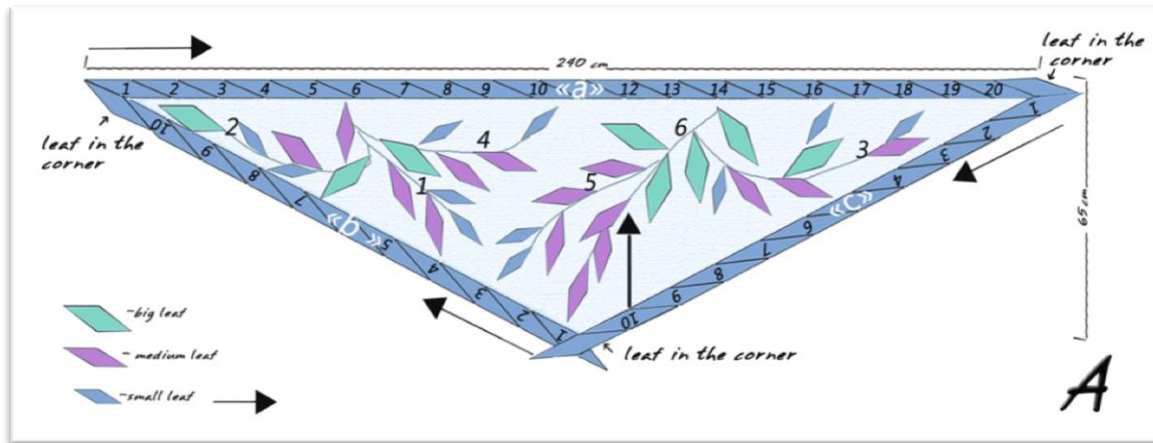
CO 6 sts (yarn A). Work according to chart. Only odd numbered row numbers are shown. In even numbered rows, always make a yarn-over at the beginning of the row, after the selvedge stitch, and another one at the end of the row, before the selvedge stitch. In all even numbered rows, purl all stitches, and [p, k] into the double yarn-over from the previous row. Continue in this manner until there are 400 sts on your needles.



Next row (WS row): purl all sts.

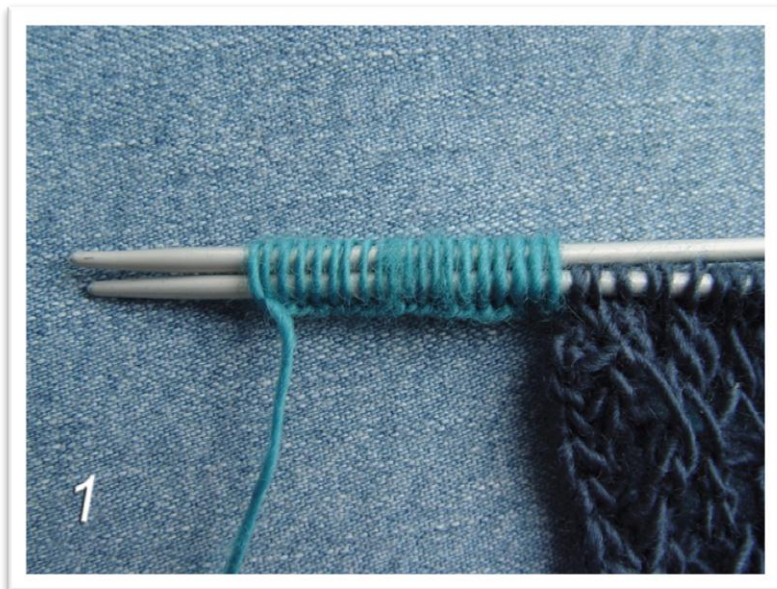
Next row (RS row): knit all sts, placing markers after every 20sts .

### Chart A:



Beginning at upper left corner of shawl and in **yarn B**, continue working the edging over these 400 sts. Start with outmost left 1 leaf (at edge "a"- see Chart A).

In addition to the 400 sts on the first needle, cast on another 20, using the backwards loop cast on method (see photo 1).



The first corner leaf border **Row 1:** 1 selv st, p39, remove marker, wrap and turn.

**Row 2:** k20, wrap and turn.

**Row 3:** k13, wrap and turn.

**Row 4:** k15, wrap and turn.

**Row 5:** k13, wrap and turn.

**Row 6:** k15, wrap and turn.

**Row 7:** k13, wrap and turn.

**Row 8:** k16, wrap and turn.

**Row 9:** k13, wrap and turn.

**Row 10:** k16, wrap and turn.

**Row 11:** k13, wrap and turn.

**Row 12:** k16, wrap and turn.

**Row 13:** k13, wrap and turn.

**Row 14:** k16, wrap and turn.

**Row 15:** k17, wrap and turn.

**Row 16:** k13, wrap and turn.

**Row 17:** k16, wrap and turn.

**Row 18:** k13, wrap and turn.

**Row 19:** k16, wrap and turn.

**Row 20:** k13, wrap and turn.

**Row 21:** k16, wrap and turn.

**Row 22:** k13, wrap and turn.

**Row 23:** k15, wrap and turn.

**Row 24:** k13, wrap and turn.

**Row 25:** k15, wrap and turn.

**Row 26:** k13, wrap and turn.

**Row 27:** k15, wrap and turn.

**Row 28:** k35, p1.

**Row 29:** bind off 26 sts, WITHOUT TURNING (now you have 1 sts on right needle), p33, remove marker, **(see photo2)** wrap and turn.





2 – 19 Leaves corners. Rep with Row 30– on Row 59

**Row 30:** k34, the 6 cast on stitches (see photo 3).

**Row 31:** 1selv st, p38, wrap and turn.

**Row 32:** k20, wrap and turn.

**Row 33:** k13, wrap and turn.

**Row 34:** k15, wrap and turn.

**Row 35:** k13, wrap and turn.

**Row 36:** k15, wrap and turn.

**Row 37:** k13, wrap and turn.

**Row 38:** k16, wrap and turn.

**Row 39:** k13, wrap and turn.

**Row 40:** k16, wrap and turn.

**Row 41:** k13, wrap and turn.

**Row 42:** k16, wrap and turn.

**Row 43:** k13, wrap and turn.

**Row 44:** k16, wrap and turn.

**Row 45:** k17, wrap and turn.

**Row 46:** k13, wrap and turn.

**Row 47:** k16, wrap and turn.

**Row 48:** k13, wrap and turn.

**Row 49:** k16, wrap and turn.

**Row 50:** k13, wrap and turn.

**Row 51:** k16, wrap and turn.

**Row 52:** k13, wrap and turn.

**Row 53:** k15, wrap and turn.

**Row 54:** k13, wrap and turn.

**Row 55:** k15, wrap and turn.

**Row 56:** k13, wrap and turn.

**Row 57:** k15, wrap and turn.

**Row 58:** k34, p1

**Row 59:** bind off 26sts, WITHOUT TURNING (now you have 1sts on right needle), p33, remove marker, wrap and turn.



Twentieth angular leaf border .

**Next** – repeat with **Row 30** – on **Row 58**

**Next** – **Row 59**. 26bind off, WITHOUT TURNING (now you have 1 sts on right needle), p13, cast on another 20, using the backwards loop cast on method.

Continue- right corner leaf.

**Next** – 1 selv st, p33, cast on another 6.

**Next** – repeat with **Row 31** – on **Row58**

**Next** – **Row59**. Bind off 40 sts.

Work sides "**b**" and "**c**" (see **Chart A**) of the border analogically.

Right side facing, pick up and knit 200 sts from the selvedge sts at a rate of 2 p/u from ea. selv st (one through front loop, another in back loop). In addition to the 200 sts on the first needle, cast on another 20, using the backwards loop cast on method.

Seam the sides of the corner leaves with a tapestry needle.

With crochet hook, crochet 6 chains for stems : 1x 32 cm, 2x 37 cm, 3x 43 cm, 4x 44 cm, 5x 45 cm, 6x69 cm. Place stems and leaves on shawl as shown in schematic (see **Chart A**), pin in place to prevent shifting, and sew on using tapestry needle and color A yarn (see photo 4).

