

knitscene®

26 projects
to
explore

Knits for the
Great Outdoors

Femme
Fatale Knits

Rocker Girl Styles

PLUS

Bead it UP!

Yarn weights revealed

knitscene.com

7.99 US/9.99 CAN

75 >



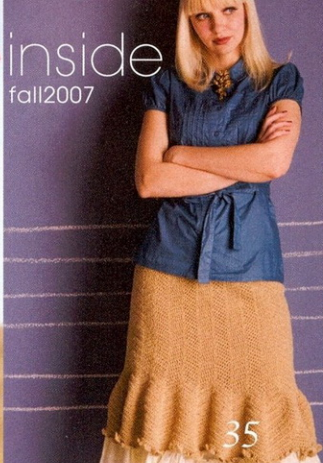
0 74820 87321 2

please display until
September 24, 2007





17



35



40

knitstyle

16 the great wide open

prairie kimono
edna hart
empire-waist tunic

16

cactus blossom pullover
kate jackson
color-work yoke

17

flutter sleeve tunic
stefanie japel
lacy layering piece

18

fiery mōbius
sharon shoji
mahair halo vest

19

acidic seed stitch bag
kate jackson
big texture bag

20

highlands zip jacket
robin shroyer
take on tradition for him

21

canyon flowers scarf
cecily keim
crochet skinny scarf

22

shaggy earflap hat
lisa shroyer
loopy lid

22

picot posey mittens
kate gilbert
surprising striped mittens

22

road to golden pullover
lisa shroyer
raglan fair isle

23

28 femme fatale

unexpected red capelet
nguyen le
racy menswear-inspired accessory

28

hero pullover
ann budd
knit-and-purl standout

29

teardrop scarves
celeste culpepper
beaded basic lace

30

hideout coat
katie himmelberg
essential sweater coat

31

two-over-two vest
jennifer l. appleby
feminine fitted waistcoat

32

ingenue blouse
phoenix bess
wickedly alluring pullover

33

fishtail tunic
emma-davida catmur
slimming allover lace

34

art deco beret
kathy veeza
sumptuous embellished tam

34

herringbone skirt
elissa sugishita
fitted and flirty crochet

35

40 rebellious streak

breton girl
kat coyle
fitted nautical stripes

40

flaming tote
regina rioux gonzalez
appliqué crochet

41

seaweed sweater
kat coyle
loose intarsia top

42

ribby retro socks
chrissy gardiner
campy calf-highs

43

roundabout vest
katie himmelberg
circles worked in stripes

44

cinchy hat and strip scarf
cathy carron
drawstring hat and scarf

45

knitlife

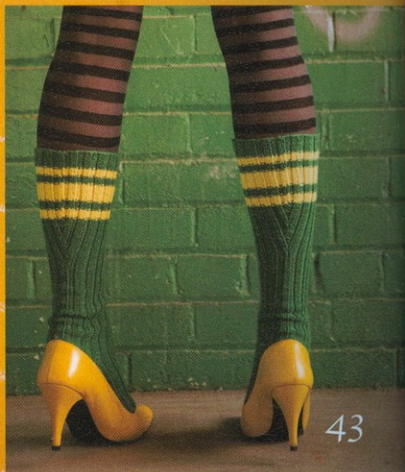
12 one cool knitter—
kate jackson
twenty-five-year-old shop owner and designer

14 in person—
3 designers in this issue
kate gilbert, jen appleby, stefanie japel

26 bead it UP!
kathy veeza
add beads to your knits

knit departments

editorial	4
check it	7
cool new products	
see it	10
knitspotting on the street: france, california, and georgia	
click it	24
two bonus projects on the web	
it's worth it	38
understanding yarn weights by clara parkes	
know it	46
glossary of stitches	
make it	52
project instructions	
take it or bead it	96
cool beads and where to find them	



43

ksweb

Find more patterns, pictures, and articles on the web!

knitscene.com

kscover

on the cover: prairie kimono
by edna hart, featured on
page 16.



photography by Joe Hancock
hair and makeup by Kathy MacKay
photostyling by Katie Himmelberg
special thanks to Pam Ballmann for assisting
with the shoot and to Sprung Construction of
Denver, Colorado, for use of their space for
photography.



34

editornote

welcome to knitscene

Natural beauty is always in style. When we started to plan this issue of *knitscene*, we wanted to see yarns and stitches that worked naturally, but unexpectedly, in fresh shapes and versatile styles. The "Great Wide Open" (pages 16–23) was photographed in the breathtaking foothills of the Rocky Mountains—what could be more natural? These garments show the best of fall outerwear: simple designs that use the natural aspects of yarn to create great sweaters and accessories—like the cover project. The Prairie Kimono is an easy, quick knit that uses two weights of yarn to a functional and fashionable end. In "Femme Fatale" (pages 28–35), the projects demonstrate the power of drape and fit. Bamboo, alpaca, silk, and heavenly wools are knitted to maximize drape, that most natural and desirable quality in handknits. And in "Rebellious Streak" (pages 40–45), individual style and its natural expression are celebrated with funky projects that are easily customized. Choose different colors and change the whole feel of the Ribby Retro Socks (page 43) or the Breton Girl (page 40). Whether you're looking for a Bohemian pullover, a fitted feminine skirt, or your first project (check out the Stripy Scarf, page 45), we've offered some natural choices for you in this spirit-filled issue of *knitscene*.

—Lisa, Katie, and Kit (editors and art director)



knitscene

a special issue

editorial

editor Lisa Shroyer
style editor Katie Himmelberg
managing editor Laura Rintala
technical editors Karen Frisa,
Tricia Kennedy, Susan
Maurer, Nancy Shroyer
copy editors Ayleen Stellhorn,
Liz McGehee

creative services

art director Kit Kinsef
production director Trish Faubion
production coordinator Dean Howes
production editor Nancy Arndt
photography Joe Hancock
(unless otherwise noted)
illustrations Gayle Ford,
Katie Himmelberg

publishing

publisher Marilyn Murphy
display advertising manager
Tiffany Zerges
senior ad traffic manager
Teresa Warren
classified advertising
Corina McClanahan
marketing manager
Annie Hartman Bakken
integrated media manager
Bruce Hallmark
consumer marketing director
Bob Kaslik
circulation manager
Joal Smith

projects and information are
for inspiration and personal use
only. *Knitscene* does not recom-
mend, approve, or endorse any
of the advertisers, products,
services or views advertised in
knitscene.

Nor does *knitscene* evaluate the
advertisers' claims in any way. You
should, therefore, use your own
judgment in evaluating the adver-
tisers, products, services, and
views advertised in *knitscene*.

Interweave Knits (ISSN 1088-
3622) is published quarterly by
Interweave Press LLC, 201 E.
Fourth St., Loveland, CO 80537-
5655. (970) 669-7672. USPS
#017-249. Periodicals postage
paid Loveland, CO 80538 and
additional mailing offices. All
contents of this issue of *knitscene*
are © 2007 by Interweave Press
LLC. All rights reserved. Projects
and information are for inspi-
ration and personal use only.
Reproduction in whole or in part
is prohibited, except by permis-
sion of the publisher.

visit the *knitscene* website at
knitscene.com

for advertising information, call
Tiffany Zerges at (877) 669-7455,
e-mail tiffanyz@interweave.com,
or visit interweave.com. For sales
information, call (800) 272-2193
or e-mail sales@interweave.com.

for retail sales of magazines and
Interweave Press books contact
Kerry Flint (800) 272-2193 ext.
673 or kerryf@interweave.com.

for editorial inquiries, call
(800) 272-2193, e-mail knitscene@interweave.com,
or write to 201
E. Fourth Street, Loveland, CO
80537-5655.

Interweave Press Fibergroup
magazines, *Cloth, Paper, Scissors* •
Fiberarts • *Handwoven* • *Interweave*
Crochet • *Interweave Knits* • *PieceWork*
• *Quilting Arts* • *Spin-Off*

Interweave Press LLC
201 East Fourth Street
Loveland, Colorado 80537
(970) 669-7672



An Aspire Media company



1 Create your own custom colorway with Hello Yarn's Dye Kit. Nearly everything you need to dye with acid dyes is included; you just supply the vinegar. Color wizard Adrian Bizilia includes five pages of instructions and tips on how she achieves such rich hues in her roving and yarn. Several yarn weights from chunky to sport are available (shown here in worsted). Find the kits at www.helloyarn.com

2 Crafted from tagua nut, these colorful buttons from On the Surface are a natural and durable alternative to plastic. Tagua nut, also known as vegetable ivory, is grown primarily in the rainforests of Colombia and Ecuador. The size and shape of the Slices vary, and they are available in 24 saturated colors. See them at www.onsurface.com

3 Reel in a one-of-a-kind, recycled bag from Lantern Moon. Made in Cambodia, these Fish Messenger Bags (also offered in a tote style) are crafted from colorful, used, fish-feed bags. The outside is durable and waterproof, and the inside is lined with a heavy canvas. Your knitting project will stay safe and dry, and don't worry: It won't smell like it's been out to sea! Check it out at www.lanternmoon.com

4 A great bag with a great cause—each unique Mielie Tote is handmade in South Africa from mostly recycled materials. Fully lined and sturdy, these bags from Be Sweet Products are perfect for knitters-on-the-go. The wide bottom and sturdy sides allow the bag to stand open on its own, so you can knit right out of it while your yarn stays protected. Shown in Flower Field. Find a retailer near you at www.besweetproducts.com

5 Want center-pull balls, but find that a ball winder eats up too much of your yarn-buying budget? Try a nøstepinne, a traditional Norwegian tool! Almost straight from nature, these nøstepinnes are carefully hand finished by Eva Joan Henderson and come with instructions on winding your own center-pull balls. Available at www.thebellwether.com

cool
gear
for fall!
5 staff picks



photos by ann swanson

knowit

ssk

Slip two stitches individually knitwise (1). Insert tip of left needle into front of these two slipped stitches and use right needle to knit them together through their back loops (2). (Some knitters like to slip the second stitch purlwise to make a more prominent decrease line.)

**ssp**

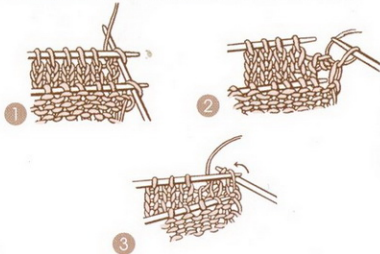
Holding yarn in front, slip two stitches knitwise one at a time onto right needle (1). Return the two stitches to the left needle and purl them together through their back loops (2).

**p2tog decrease**

Purl 2 stitches together as if they are a single stitch—2 stitches reduced to 1.

three-needle bind-off

Place stitches to be joined onto two separate needles. Hold the needles so that right sides of knitting face together. *Insert a third needle into first stitch on each of the other two needles (1) and knit them together as 1 stitch (2); knit the next stitch on each needle together in the same way; then pass the first stitch over the second (3). Repeat from * until 1 stitch remains on third needle. Cut yarn and pull tail through last stitch.

**whipstitch**

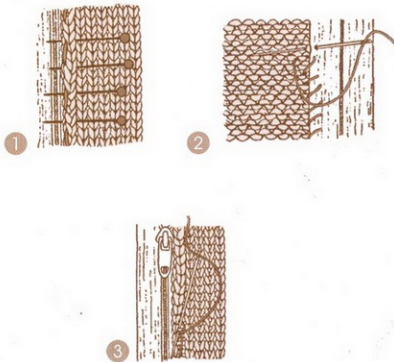
With right side of work facing and working 1 stitch from the edge, bring threaded yarn needle out from back to front around edge of knitted piece. Wrap the edge and insert the needle from the back to the front again.

yarnover (yo)

After knitting the stitch before the yarnover, bring the yarn forward between the needle tips. When you knit the next stitch, bring the yarn up and over the right-hand needle to the back of the work again, ready to knit the next stitch (1). The strand that travels over the top of the needle is the yarnover, and it counts as one stitch.

**zipper**

With right side facing and zipper closed, pin zipper to fronts so front edges cover the zipper teeth. With contrasting thread and right side facing, baste zipper in place close to teeth (1). Turn work over and with matching sewing thread and needle, stitch outer edges of zipper to wrong side of fronts (2), being careful to follow a single column of sts in the knitting to keep zipper straight. Turn work back to right side facing and, with matching sewing thread, sew knitted fabric close to teeth (3). Remove basting.



knowit

crochet

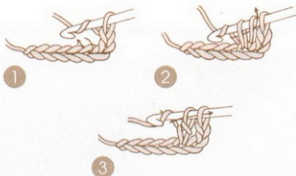
crochet chain (ch)

Make a slipknot on hook. *Yarn over hook and draw it through loop of slipknot. Repeat from *, drawing yarn through the last loop formed.



double crochet (dc)

*Yarn over hook, insert hook into a stitch (1), yarn over hook and draw a loop through stitch, yarn over hook and draw it through 2 loops (2), yarn over hook and draw it through remaining 2 loops (3). Repeat from *.



fasten off (in crochet)

Leaving tail, break yarn and thread the end through stitch on hook and pull tightly.

half double crochet (hdc)

*Yarn over hook, insert hook into a stitch, yarn over hook and draw a loop through stitch (3 loops on hook), yarn over hook (1) and draw it through all the loops on the hook (2). Repeat from *.



single crochet (sc)

*Insert hook into a stitch, yarn over hook and draw a loop through stitch, yarn over hook (1) and draw it through both loops on hook (2). Repeat from *.



sc2tog decrease

Insert hook in next stitch, yarn over hook and draw loop through stitch (2 loops on hook). Insert hook in next stitch, yarn over hook and draw loop through stitch (3 loops on hook), yarn over hook and draw loop through all 3 loops on hook—1 stitch decreased.

slip stitch (sl st) in crochet

Insert hook into stitch, yarn over hook and draw loop through stitch and loop on hook.



one cool knitter: Kate Jackson

25-year-old shop owner
and designer

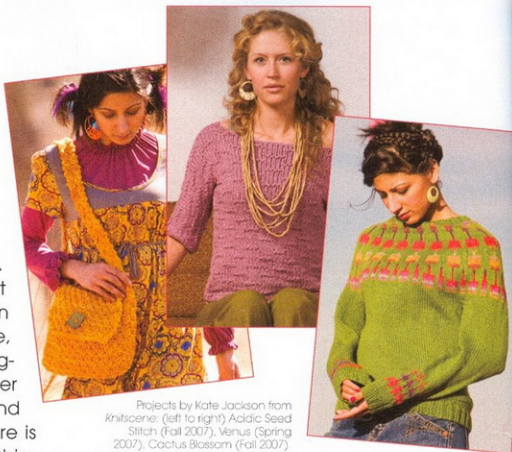
Kate Jackson grabs life by the (yarn) balls. The young entrepreneur graduated from Kent State with a BS in Fashion Design in 2005, then took a job managing an upstart yarn store, which expanded rapidly and moved to a larger location within its first year. When the owner of the shop relocated, Kate and her husband bought the business. Knitting on the Square is located in historic downtown Chardon, Ohio. Kate teaches classes at the shop and designs knitwear. She plans to launch her pattern line, Kate Jackson Knits, in Fall 2008. Check out her projects in this issue (pages 17 and 20) and her shop website at www.knittingonthesquare.com.

How and when did you learn to knit?

My high school librarian, Susan Jambor, got me interested in knitting when I saw the beautiful things she made. I graduated before she had time to teach me, so she gave me a beginner's book and a kit with yarn and needles as a graduation gift. I taught myself to knit that summer!

What are your main goals in designing knitwear?

I usually strive to design pieces that have a definite sense of style but that are not too difficult or unapproachable for other knitters to make themselves. My goal is to get a striking final effect from minimal effort. I like to use techniques that will show off the unique qualities of the specific yarn.



Do teaching classes and helping customers in your shop influence the way you design?

Teaching and helping customers constantly reminds me that knitters have different levels of knitting knowledge and expertise. When I'm writing a pattern, I know that many abbreviations and techniques that I take for granted need to be spelled out. I also get a glimpse of the types of things many knitters appreciate, such as minimal seaming, limited purling, and a pattern that doesn't need to be referred to every row of the project.

How does your background in fashion design give you a unique perspective?

Designing patterns for handknitting is a unique form of design; it bridges a gap between the creative and the logical. I use my background in fashion design for the creative aspects—from trending and choosing yarns to designing the shape and fit of the garment itself. Then I use my knitting logic to actually write a pattern—shaping a piece of fabric stitch by stitch and row by row. ☐



Photos courtesy of Kate Jackson

prairie kimono

edna hart

●●○○○ page 16

Sizes 34 (36, 40, 45, 48)" bust

Yarn Black Forest Naturwolle

Tweed (100% wool; 110 yd

(101 m)/100 g):

• #5 orange (MC), 4 (4, 5, 5,

6) skeins

GGH Soft Kid (70% mohair,

25% nylon, 5% wool; 151 yd

(138 m)/25 g):

• #69 yellow (CC), 2 (2, 3, 3, 3)

balls

Yarns distributed by Muench

Yarns

Gauge 9 sts and 13 rows = 4"

in patt with MC on size 11

needle; 11 sts and 29 rows = 4"

in St st with CC tripled on size 9

needle

Tools

• Size 9 (5.5 mm): 24" circular

needle

• Size 11 (8 mm): 29" circular needle

• Size 13 (9 mm): straight needle

• Yarn needle

• Markers (m)



Black Forest
Naturwolle Tweed



GGH Soft Kid

see glossary for terms you don't know

Stitches

K3W: [K1, wrapping yarn around right needle tip 2 times before dropping st off left needle] 3 times. On next row, work into one loop only of double sts.

TOP

With size 11 needle and MC, CO 40 (43, 47, 53, 57) sts.

Row 1 (WS) P5 (5, 4, 4, 3), *K3W (see Stitches), p3; rep from * to last 5 (8, 7, 7, 6) sts, p5 ([K3W, p5], [K3W, p4], [K3W, p4], [K3W, p3]).

Row 2 (RS) K8 (5, 4, 4, 3), *p3, k3; rep from * to last 8 (8, 7, 7, 6) sts, p3, k5 (5, 4, 4, 3).

Rep last 2 rows until piece measures 13 (13, 13, 13½, 13½)" from CO. **Neck:** Work 13 (14, 16, 19, 20) sts in patt, join new yarn, BO next 14 (15, 15, 15, 17) sts, work 13 (14, 16, 19, 20) sts in patt. Work each side separately and inc 1 st at each neck edge every 3rd (3rd, 4th, 4th 5th) row 5 times, working new sts in St st—18 (19, 21, 24, 25) sts each side. Work even in patt until front measures 13 (13, 13, 13½, 13½)" from neck BO. BO all sts.

BOTTOM (MAKE 2)

With size 11 needle and MC, CO 35 (39, 43, 49, 53) sts.

Row 1 (WS) P1 (3, 2, 2, 1), *K3W, p3; rep from * to last 4 (6, 5, 5, 4) sts, K3W, p1 (3, 2, 2, 1).

Row 2 (RS) K1 (3, 2, 2, 1), *p3, k3; rep from * to last 4 (6, 5, 5, 4) sts, p3, k1 (3, 2, 2, 1).

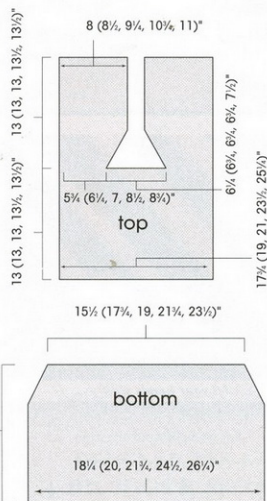
Cont in patt and inc 1 st each end of needle every WS row 3 times, working new sts in St st—41 (45, 49, 55, 59) sts. Work even in patt until piece measures 11½" from CO. BO all sts.

FINISHING

Wet-block pieces to schematic measurements.

Armbands: Fold top in half so BO and CO edges meet. With CC doubled and smallest needle, pick up and knit 1 st per row around entire side opening (armhole opening); do not join. Beg with a purl row, work back and forth in St st for 6 rows. Knit 1 WS row. Work 6 more rows in St st. BO all sts loosely. Rep for second armhole. Tack facings to WS of armholes.

Neckband: With CC doubled and smallest needle, beg at bottom of right-front neck, pick up and knit 107 (107, 109, 109, 111) sts around



neckline, ending at bottom of left-front neck. Do not join.

Next row P46 (46, 47, 47, 48), M1, p15, M1, p46 (46, 47, 47, 48)—109 (109, 111, 111, 113) sts. Work 5 rows in St st. Knit 1 WS row. Work 6 more rows in St st. BO all sts loosely. Tack facing to WS of neck. Sew top side seams at underarm, 2" up from bottom edges. Sew bottom pieces tog at side seams. With CC tripled and smallest needle, pick up and knit 1 st in each st around top edge of bottom (CO edge). Join for working in the rnd. Work 9 rnds in St st. Change to size 11 needle and knit 1 more rnd. With largest needle, BO all sts loosely. Sew top edge of waistband to bottom edge of top, overlapping trim at base of V-neck and easing top in to fit. Weave in ends. □

cactus blossom

kate jackson

●●●○ page 17

Sizes 34½ (37¼, 40, 42½, 48½)" bust

Yarn Plymouth Galway Worsted (100% wool; 210 yd (192 m)/100 g):

- #130 green (MC), 3 (4, 4, 5, 6) skeins

Plymouth Boku (95% wool, 5% silk; 99 yd (90 m)/50 g):

- #2 pink/blue variegated (CC), 2 (2, 2, 3, 3) skeins

Gauge 16 sts and 24 rows = 4" in St st with MC on larger needles

Tools

- Size 4 (3.5 mm): 24" circular needle and double-pointed (dpn)
- Size 8 (5 mm): 24" circular needle and dpn
- Yarn needle
- Markers (m)
- Stitch holders

see glossary for terms you don't know

BODY

With MC and smaller circular needle, CO 136 (148, 160, 168, 192) sts. Place marker (pm) and join for working in the rnd, being careful not to twist sts.

Rnd 1 *K2, p2; rep from * to end.

Rep Rnd 1 until piece measures 1½" from CO. Change to larger circular needle and beg working in St st (knit every rnd), inc 2 (1, 0, 3, 1) st(s) evenly spaced on first St st rnd—138 (149, 160, 171, 193) sts. Work even in St st until piece measures 12 (12½, 13, 13½, 13¾)" from CO, ending last rnd 6 (7, 7, 7, 8) sts before m. Set aside.



Plymouth Galway Worsted

Plymouth Boku

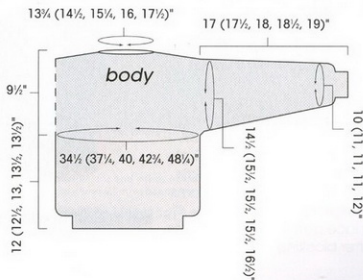
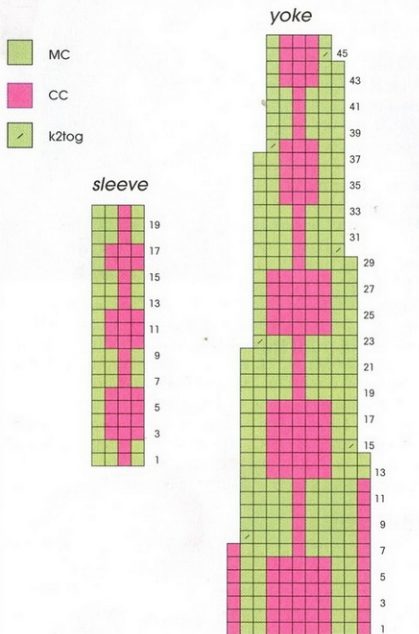
2

SLEEVES

With MC and smaller dpn, CO 36 (40, 40, 40, 44) sts. Pm and join for working in the rnd.

Rnd 1 *K2, p2; rep from * to end.

Rep Rnd 1 until piece measures 1½" from CO. Change to larger dpn and knit 2 rnds. **Inc rnd** K2, M1, knit to last 2 sts, M1, k2. Knit 2 rnds. Rep Inc rnd—40 (44, 44, 44, 48) sts. Work Rnds 1–20 of Sleeve chart. Drop CC. Cont with MC



2

cactus blossom kate jackson

A seamless yoke is freshened up when a variegated yarn is used as the contrast in a basic Fair Isle pattern. Start knitting with the shaded yarn at any color segment and watch it blossom.

Yarn Plymouth Galway Worsted and Plymouth Boku. Instructions page 53



3

flutter sleeve stefanie japel

Stephanie Japel designed this tunic to be worn big and loose over a contrasting color cami. It is knitted in two pieces—each piece starts at the sleeve and is worked to the center. The live stitches of the pieces are grafted together with Kitchener stitch.

Yarn Lily Chin Signature Collection Greenwich Village, distributed by CNS Yarns. Instructions page 54

**firefly möbius shari**

A wide rectangle is twisted and sewn to the back Möbius vest. To wear, long, twisted front of head and fluff the folds.

Yarn Lorna's Loops Instructions



4

firefly möbius sharon shoji

A wide rectangle is twisted once and sewn to the back of this Möbius vest. To wear, loop the long, twisted front over your head and fluff the folds in front.

Yarn Lorna's Laces Heaven.

Instructions page 56

only, work Inc rnd on next rnd and then every foll 7th rnd 8 times—58 (62, 62, 62, 66) sts. Work even in St st until sleeve measures 17 (17½, 18, 18½, 19)" from CO, ending last rnd 6 (7, 7, 7, 8) sts before m. Place next 12 (14, 14, 14, 16) sts on a holder, removing m.

YOKE

With RS of body facing, place next 12 (14, 14, 14, 16) sts of body on holder (removing beg-of-rnd m), pm for new beg of rnd. With circular needle holding body sts, k46 (48, 48, 48, 50) sts of one sleeve, k57 (61, 66, 71, 81) sts of body, place next 12 (14, 14, 14, 16) body sts on holder, k46 (48, 48, 48, 50) sts of second sleeve, knit rem 57 (60, 66, 72, 80) sts of body—206 (217, 228, 239, 261) sts total. Knit 3 rnds. **Dec rnd** *Ssk, k10, ssk, k20, k2tog, k10, k2tog, k57 (61, 66, 71, 81) sts of body; rep from * once more—198 (209, 220, 231, 253) sts rem. Work Rnds 1–46 of Yoke chart, changing to dpn when necessary—90 (95, 100, 105, 115) sts rem once chart is complete. Drop CC and knit 1 rnd with MC. **Dec rnd** *K3, k2tog; rep from * around—72 (76, 80, 84, 92) sts rem. Change to smaller dpn and work 4 rnds in 2x2 rib. BO all sts.

FINISHING

Graft underarm sts tog with Kitchener st. Weave in ends and block according to yarn label instructions. □

flutter sleeve

stefanie japel

●●●○ page 18

Sizes To fit 34–36 (40–42, 46–48, 52–54)" bust with generous ease

Yarn Lily Chin Signature Collection Greenwich Village (60% nylon, 22% acrylic, 18% mohair; 138 yd (126 m)/50 g):
• #5579 blue, 4 (4, 5, 5) balls
Yarn distributed by CNS Yarns
Gauge 9 sts and 14 rows = 4" in lace patt on larger needles after blocking



Lily Chin Signature
Collection Greenwich
Village

3

Tools

- Size 13 (9 mm): 32" circular needle
- Size 8 (5 mm): 24" circular needle
- Stitch holder
- Marker (m)
- Yarn needle

see glossary for terms you don't know

Notes

This garment is made in two pieces. Each piece starts at the sleeve lower edge and is worked to the center of the body. The front stitches are shaped for the V-neck, then bound off. Center-back stitches of the first piece are placed on a holder until the second piece is finished; the pieces are then grafted together using Kitchener stitch.

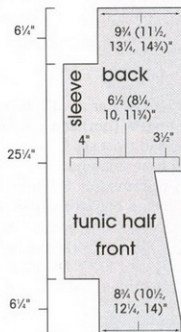
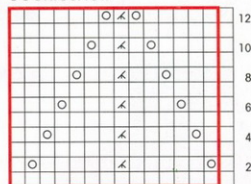
The lace pattern is worked in garter stitch, knitting every row while in pattern.

TUNIC HALF (MAKE 2)

With larger circular needle, CO 57 sts. Do not join. Work Rows 1–12 of Lace chart (see Notes above). At end of last row, CO 14 sts using the backward-loop method—71 sts. Work 1 row in patt. **Next row** CO 14 sts using the knitted method, work in patt to end—85 sts. Work Rows 3–12 of chart, then work Rows 1–12 once (once, twice, twice), then work Row 1 (Rows 1–7, Row 1, Rows 1–7) again. **Next row** Work 42 sts in patt, place rem 43 sts on holder for back.

- k (RS and WS rows)
○ yo
◁ k3tog
□ pattern repeat

cockleshell





5

acidic seed stitch kate jackson

An easy double-seed-stitch bag is worked in the round from the bottom up. On size 13 needles, three skeins of this bulky yarn go fast. Make it your own with a one-of-a-kind button.

Yarn Blue Sky Alpacas Bulky Hand Dyes. Instructions page 58



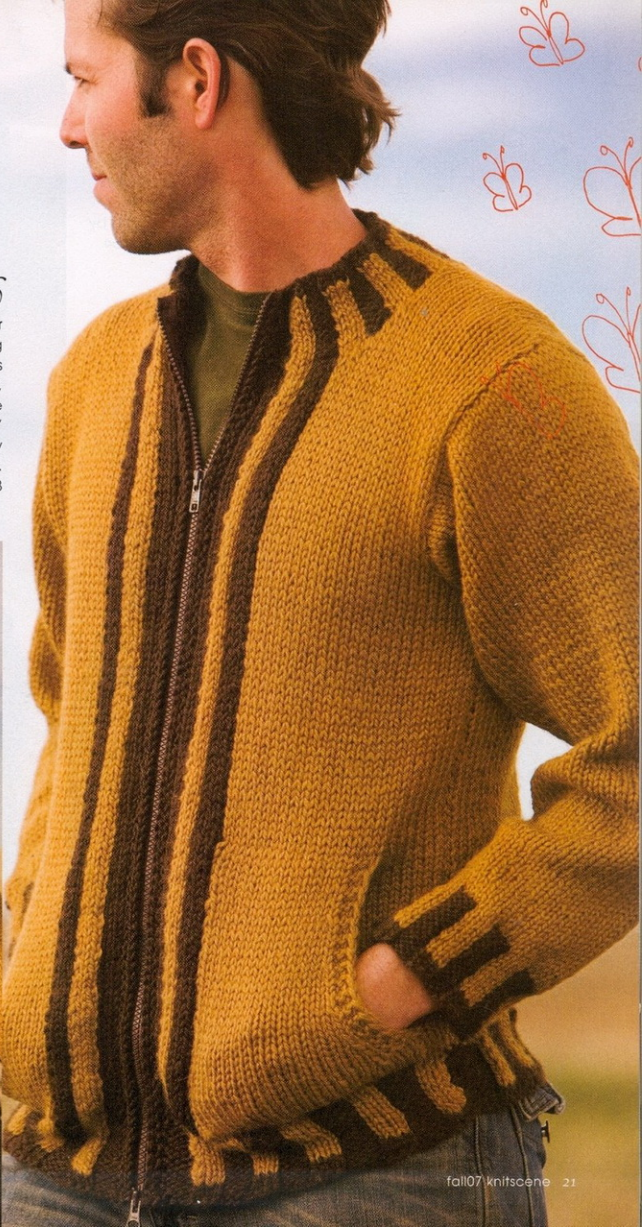
6

highlands zip robin shroyer

A boxy man's cardigan takes its styling from varsity letterman jackets. The stripes are worked in easy stranded knitting, while the unique side-entry pockets are anything but "grandpa."

Yarn Naturally Alpine 14-Ply, distributed by Fiber Trends.

Instructions page 58



7

canyon flowers cecily keim

A handpainted-style yarn shades from pink to mauve to purple and back in this easy crocheted scarf.

Yarn Garnstudio Inka, distributed by Aurora Yarns. Instructions page 64



8

shaggy earflap hat lisa shroyer

Knit a tube, add some earflaps and trim, and you have a funky, girly earflap hat.

Yarn GGH Savanna Color and GGH Tibet, distributed by Muench Yarns.

Instructions page 64

9

road to golden lisa shroyer

If you've learned the mechanics of stranded color work, then this sweater makes a great first Fair Isle project. In a worsted-weight yarn, it works up much quicker than a traditional Fair Isle sweater;

there are no color runs more than five stitches long; and no steeks are required!

Yarn Halcyon Yarns Botanica.

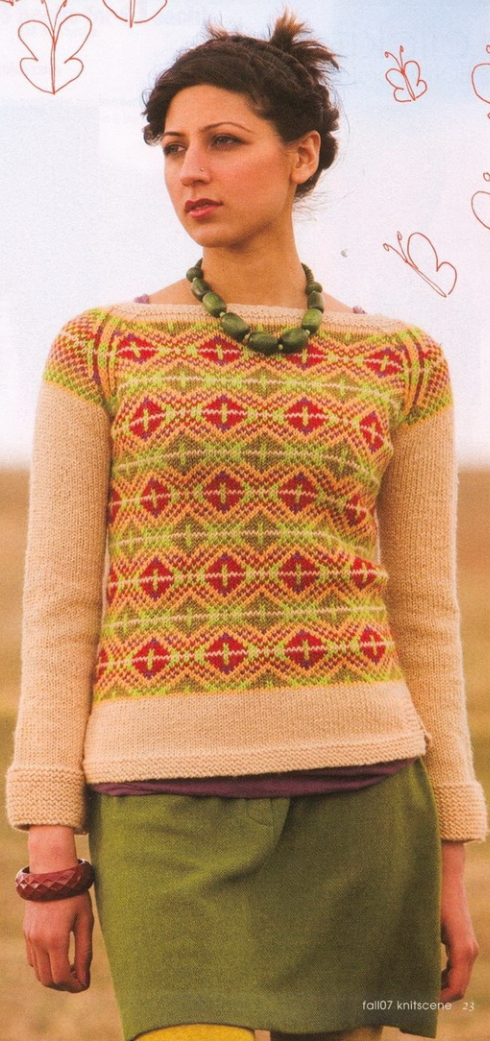
Instructions page 66

10

picot posey mittens kate gilbert

Keep your fingers toasty in these simple-to-knit mittens. The fun stripe sequence shakes up an otherwise straightforward project.

Yarn Mission Falls 1824 Wool, distributed by CNS Yarns. Instructions page 71





intricate stag bag

norah gaughan

A panel of Fair Isle is surrounded by two-color chevron and trimmed with twisted cord.

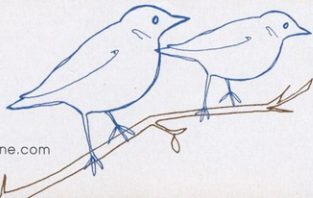
Yarn Berroco Ultra Alpaca Light (50% superfine alpaca, 50% peruvian wool; 144 yd (132 m)/50 g): #4204 dark chocolate (MC); and #4249 fennel (CC), 2 skeins each.

notting hill vest

kathy zimmerman

Alternate cable repeats and crosses in a syncopated trelliswork for this classic men's vest.

Yarn Knit Picks Shamrock (100% wool; 82 yd (75 m)/50 g): #23966 Kelley, 8 (9, 9, 10, 11) balls.



find complete instructions for these
2 bonus projects online,

knitscene.com



Femme Fatale

11

unexpected red nguyen le

Whimsical and daring, this capelet is worked in an alpaca yarn that has a gold thread running through it—a bit of unexpected glam. A dashing velvet ribbon ties at the throat like a man's tie . . . or in a bow if you're in a gentler mood.

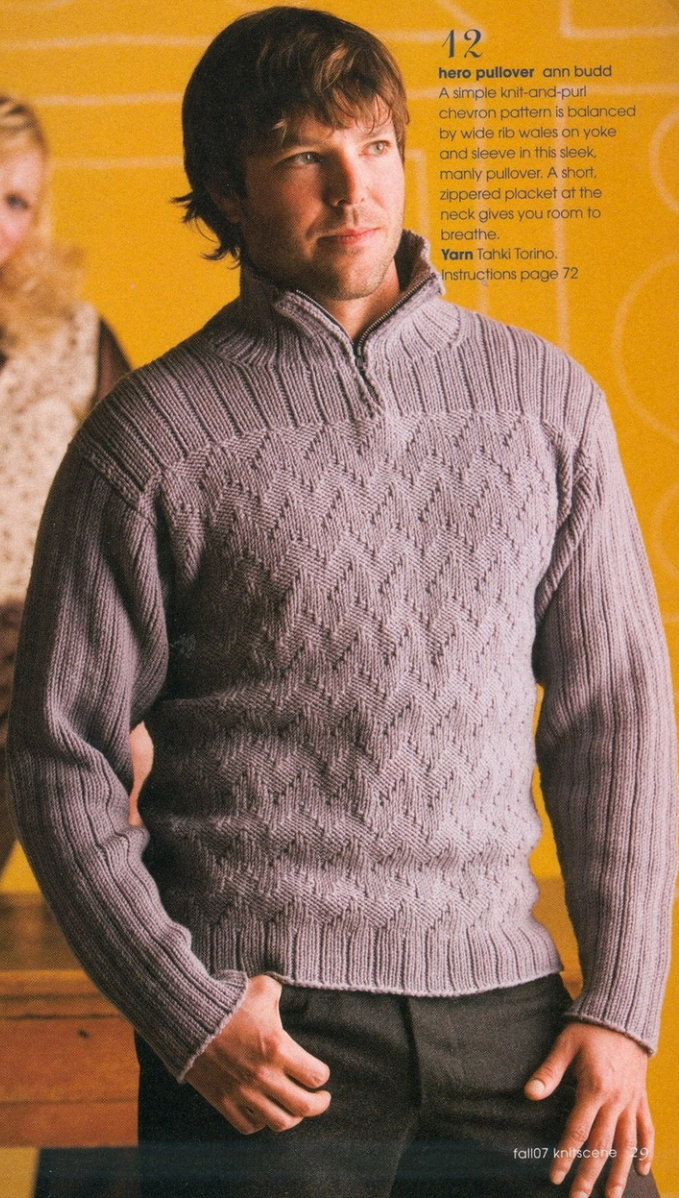
Yarn Nashua Handknits Ivy, distributed by Westminister Fibers. Instructions page 72

12

hero pullover ann budd

A simple knit-and-purl chevron pattern is balanced by wide rib wales on yoke and sleeve in this sleek, manly pullover. A short, zippered placket at the neck gives you room to breathe.

Yarn Tahki Torino.
Instructions page 72



43

teardrop scarves
celeste culpepper

Two basic lace scarves are worked sideways—in long rows—and shaping at each short end creates a scalloped edge, which is tipped with glass beads. The yarn's flowing elegance belies the easy patterning. Learn about beaded knitting on page 26.

Yarn Jade Sapphire Lacey Lamb. Instructions page 74



14

hideout coat katie himmelberg

Trench coats have a timeless appeal, but this oversize, knitted trench just begs for vintage accessories. It may look like an intimidating project, but the bulky yarn is worked on big needles in simple stockinette, and there are no buttonholes!

Yarn Rowan Big Wool, distributed by Westminister Fibers.
Instructions page 75



15

two-over-two vest

jennifer l. appleby

A cable-and-rib pattern draws in the waist of this sweet brief vest. No shaping and minimal seaming make this layering piece an easy knit.

Yarn Classic Elite Premiere.
Instructions page 76





16

ingenue blouse phoenix bess

Unique construction creates a versatile fit in this dolman-esque pullover. The top is worked in two identical pieces, starting at the neck edge and worked to the cuff. The tops are gathered and sewn into the ribbed body tube.

Yarn Classic Elite Wool Bam Boo.
Instructions page 77

k1f&b increase

Knit into next stitch and leave it on the needle; then knit through the back loop of the same stitch—1 stitch increased to 2.

k2tog decrease

Knit 2 stitches together as if they are a single stitch—2 stitches reduced to 1.

kitchener stitch

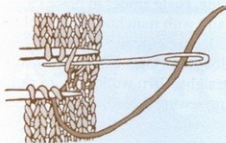
(1) Bring threaded needle through front stitch as if to purl and leave stitch on needle.

(2) Bring threaded needle through back stitch as if to knit and leave stitch on needle.

(3) Bring threaded needle through first front stitch as if to knit and slip this stitch off needle.

(4) Bring threaded needle through next front stitch as if to purl and leave stitch on needle.

(5) Bring threaded needle through first back stitch as if to purl (as illustrated), slip this stitch off, bring needle through next back stitch as if to knit, leave this stitch on needle. Repeat Steps 3–5 until no stitches remain on needles.

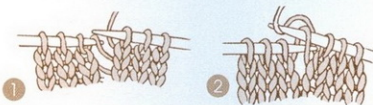
**knitted cast-on**

Place slipknot on left needle if there are no established stitches. *With right needle, knit into first stitch (or slipknot) on left needle and place new stitch onto left needle. Repeat from *, always knitting into last stitch made.

raised (M1) increases

Left Slant (M1L) and Standard M1

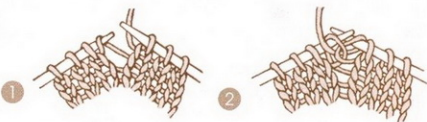
With left needle tip, lift strand between needles from front to back (1). Knit lifted loop through the back (2).

**Right Slant (M1R)**

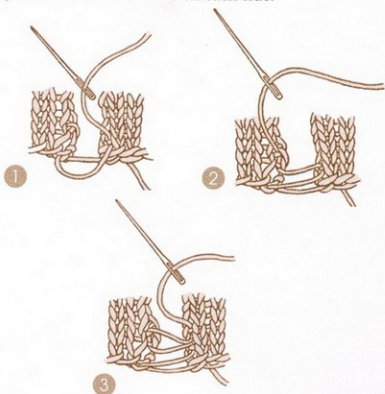
With left needle tip, lift strand between needles from back to front (1). Knit lifted loop through the front (2).

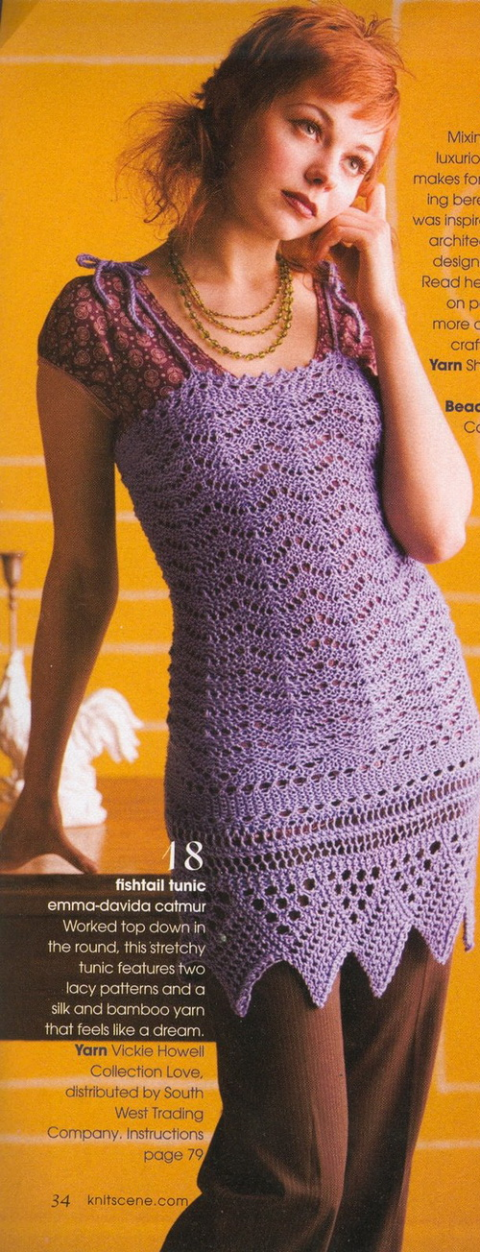
**Purlwise (M1P)**

With left needle tip, lift strand between needles, from back to front (1). Purl lifted loop (2).

**invisible vertical seam (mattress stitch)**

(Also called ladder stitch.) With the right side of the knitting facing you, use a threaded needle to pick up one bar between the first two stitches on one piece (1), then the corresponding bar plus the bar above it on the other piece (2). *Pick up the next two bars on the first piece, then the next two bars on the other (3). Repeat from * to the end of the seam, finishing by picking up the last bar (or pair of bars) at the top of the first piece. To reduce bulk, pick up the bars in the center of the edge stitches instead of between the last two stitches. To prevent a half-row displacement at the seam, be sure to start the seam by picking up just one bar on the first side, then alternate two bars on each side.





18

fishtail tunic

emma-davida catmur

Worked top down in the round, this stretchy tunic features two lacy patterns and a silk and bamboo yarn that feels like a dream.

Yarn Vickie Howell Collection Love, distributed by South West Trading Company. Instructions page 79

17

art deco beret

kathy veeza

Mixing beads and a luxurious shaded yarn makes for an eye-catching beret. The designer was inspired by Art Deco architecture when she designed the pattern. Read her superb article on page 26 to learn more about this cross-crafting technique.

Yarn Sheep Shop Yarn Sheep 3.

Beads Helby Import Company. Size 6. Instructions page 78



19

herringbone skirt

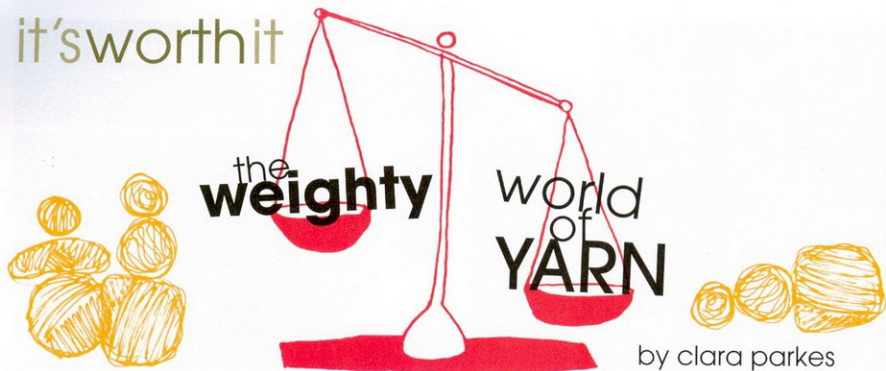
elissa sugishita

A simple pattern repeat, worked all-over in this crocheted knee-length skirt, makes a structured statement. A miniature ruffle on the very edge says "sweet" without being sappy.

Yarn Elsebeth Lavold Silky Wool, distributed by Knitting Fever. Instructions page 80



it's worth it



Knitting has its own lingo. Not only do we speak in acronyms (“My WIP is an FO!”), but we use odd and somewhat archaic terms like worsted, fingering, and DK to describe yarn types. They refer to the weight, or thickness, of a yarn, which determines its gauge and ideal applications. Let’s walk through all the yarn weights, from the cobweb-thin to the big and bulky, and translate them into terms you can remember the next time you’re at your local yarn store.

What follows are approximations and averages based on an imaginary world where everything is knit in perfect squares of cohesive stockinette. But we don’t always knit this way. Sometimes we knit lace patterns out of yarns that *aren’t* laceweight. Sometimes we knit socks out of yarns that are thicker or finer than traditional sock-weight yarns. Sometimes we may knit an item out of three strands of superfine yarn that, when knit together, produce an entirely different gauge. The weights simply create a general framework; the exceptions are yours to discover.

We start with the finest of the fine, those yarns that could double as sewing thread or dental floss—almost. You’ll see them called superfine, fingering, baby, laceweight, cobweb, or sock. Technically this weight of yarn is reserved for lace, socks, heirloom baby items, or perhaps an intricate color-work pair of mittens or a hat. When knitting a standard stockinette fabric from this weight of yarn, you’d use U.S. size 1–3 needles at a gauge of twenty-seven to thirty-two stitches per four inches. But many times you’ll use superfine yarns for open-work lace that’s knit on much larger needles. It’ll look strange and jumbled as you work, but when you finish and wash the lace, you’ll be able to expand it to almost twice its size.

Next up we have fine and sportweight yarns. These yarns are fine enough for socks, mittens, some lace, and delicate

baby clothes, but they’re also suitable for lightweight sweaters. Fine/sportweight yarns knit up at twenty-three to twenty-six stitches per four inches on U.S. size 3–5 needles.

Moving along in the thickness scale, we reach a transitional category of yarns that aren’t fine enough to be sportweight but are slightly finer than the next category. These yarns go by the terms DK (which stands for double-knitting) or light worsted and tend to knit up at twenty-one to twenty-four stitches per four inches on U.S. size 5–7 needles.

Our next category, worsted-weight or medium-weight yarn, is a favorite general-purpose yarn weight for all sorts of projects. It’s also the source of some confusion because the term worsted has two very different definitions depending on its context. In terms of yarn weight, worsted or medium yarn knits up at sixteen to twenty stitches per four inches on U.S. size 7–9 needles.

But in terms of yarn itself, the term worsted also refers to *any* yarn—regardless of weight—whose fibers have been combed and closely aligned prior to spinning. Worsted-spun yarns tend to be smooth and lustrous, with excellent stitch definition. On the other end of the spectrum we have woolen-spun yarns, whose fibers stay jumbled prior to spinning. Woolen-spun yarns tend to produce a loftier, fuzzier fabric



with a greater variety of needle sizes—the yarn simply expands or contracts to fill whatever space you give it.

Now we reach those bulkier instant-gratification yarns that let you knit up an entire sweater in one weekend. Termed bulky or chunky, and sometimes referred to as rug yarns, these thick yarns knit up at a speedy twelve to fifteen stitches per four inches on U.S. size 9–11 needles. Bulky or chunky yarns are great for quick-knitting items of all sorts—scarves, hats, bags, and even sweaters. But keep in mind that these yarns produce a bulky fabric with extremely obvious stitches. Lace, cables, and other patterned stitches tend to get blown out of proportion in bulky yarns, although some designers use this effect to their advantage.

And finally, we reach the bulkiest of the bulky, super bulky or super chunky, also sometimes referred to as polar or roving. These yarns are best suited for bulky outerwear, such as jackets and coats, and although you can also use them for quick-knitting afghans and scarves. Super-bulky yarns knit up at six to eleven stitches per four inches on needles ranging from U.S. size 11 to baseball bats and beyond.

You'll notice that I often used the word "weight" in conjunction with these terms—worsted weight, medium weight, fingering weight, etc. Today, when we talk about a yarn in terms of weight, we're often referring to its thickness. This odd word use harks back to the days when patterns specified yarn requirements in terms of *weight* rather than yards, and when most skeins weighed the same. But that approach didn't take into account the fiber content or the way the yarn was spun. Also, yarns with natural fibers weigh less or more depending on the

amount of moisture in the environment, since those fibers readily absorb whatever ambient moisture is in the air.

But weight can be a good point of comparison if you're checking out two different yarns in the same class and want a better idea of how they differ. Simply compare the actual weight and yardage of each skein. You may be surprised. I found two bulky yarns that looked relatively similar and both came in fifty-gram skeins. The first, made of pure wool, had eighty yards per skein; the second, a blend of wool and lighter fibers, had 120 yards—or 50 percent more yarn. Knit the same garment out of each yarn and the first will weigh 50 percent more because you're using twice as much yarn.

The more you use this language, the more familiar it will become. In the meantime, make a cheat sheet of all the weights, gauges, and needle sizes. When you're at a crowded new LYS, fall in love with a shawl pattern, and are told that it uses fingering-weight yarn, you can quickly glance at your notes and find—with total confidence—all the info for your ideal yarn. ☐

Clara Parkes explores new and unusual yarns each week in her online magazine, *Knitter's Review*, and in her soon-to-be published book, *The Knitter's Book of Yarn: The Ultimate Guide to Choosing, Using, and Enjoying Yarn* (Potter Craft, December 2007).

ONLINE RESOURCE

The Craft Yarn Council of America also offers valuable information about yarn types: find this and more online at www.yarnstandards.com.



ReBELLIOUS StREaK



20

breton girl kat coyle

A dramatically shaped waistline makes for an hourglass fit in this mod nautical pullover. Worked in a stretchy acrylic, it's great for all seasons.

Yarn Elle Stretch DK, distributed by Unicorn Books. Instructions page 82



21

flaming tote regina rioux gonzalez

Say it loud with single crochet! Engineered panels joined with contrasting trim create the bowling-bag-inspired shape. Set it ablaze with shapely appliqué.

Yarn Valley





23

ribby retro socks chrissy gardiner

These ribbed socks feature bold stripes and calf shaping. In a sportweight yarn, the knitting goes faster than with standard sock yarn.

Yarn Louet Gems Sport Weight.
Instructions page 88

24

roundabout vest katie himmelberg

Worked in a self-stripping yarn, two circles are knitted from the center out. Gussets join the circles under the arms and go up and over the shoulders to make cap sleeves.

Yarn Schoeller + Stahl Limbo Color, distributed by Skacel. Instructions page 89





25

cinchy hat cathy carron

This basic striped hat is worked from the top down. Weave a ribbon through two columns of eyelets in back and then cinch and tie for a unique, ruched look.

Yarn Reynolds Signature, distributed by JCA. Instructions page 90

26

stripy scarf cathy carron

This super-easy striped scarf is worked in long rows horizontally, with garter edges to keep it from rolling. One ball of each of the seven colors is enough to make this scarf and the matching hat!

Yarn Reynolds Signature, distributed by JCA. Instructions page 90

knowit

level of difficulty:

- ○ ○ ○ I've learned the basic stitches
- ● ○ ○ I'm ready to move past scarves
- ● ● ○ I'm feeling pretty confident
- ● ● ● I'm ready for a challenge

learnit • abbreviations

beg	beginning; begin; begins
BO	bind off
CO	cast on
dec	decrease(s); decreasing
g	gram(s)
inc	Increase(s); increasing
k	knit
knw	knitwise
lp	loop(s)
m	marker(s)
mm	millimeter(s)
p	purl
pm	place marker
pss	pass slipped stitch over
p2ss	pass two slipped stitches over
pw	purlwise
rem	remain(s); remaining
rep	repeat; repeating
rev St st	reverse stockinette stitch
rnd(s)	round(s)
RS	right side
sk	skip
sl	slip
sp	space
st(s)	stitch(es)
St st	stockinette stitch
tbl	through back loop
tog	together
WS	wrong side
*	repeat starting point (i.e., repeat from *)
()	alternate measurements and/or instructions
[]	instructions that are to be worked as a group a specified number of times

knitting gauge

To check gauge, cast on 30 to 40 stitches using recommended needle size. Work in pattern stitch until piece measures at least 4" from cast-on edge. Remove swatch from needles or bind off loosely and lay swatch on flat surface. Place a ruler over swatch and count number of stitches across and number of rows down (including fractions of stitches and rows) in 4". Repeat two or three times on different areas of swatch to confirm measurements. If you have more stitches and rows than called for in instructions, use larger needles; if you have fewer, use smaller needles. Repeat until gauge is correct.

reading charts

Unless otherwise indicated, read charts from the bottom up. On right-side rows, read charts from right to left. On wrong-side rows, read charts from left to right. When knitting in the round, read charts from right to left for all rounds.

knitting

backward-loop cast-on

*Loop working yarn and place on needle backward so that it doesn't unwind. Repeat from * for desired number of stitches.



i-cord

With double-pointed needle, cast on desired number of stitches. *Without turning the needle, slide the stitches to other end of the needle, pull the yarn around the back, and knit the stitches as usual; repeat from * for desired length.

join for working in the rnd

To work in the round, you need to use a circular needle or double-pointed needles. After all stitches have been cast-on, hold needle tips together, creating a circle. Make sure your stitches do not twist around the needle(s); you should be able to see the tops of the stitches all the way around and the cast-on should not spiral over the needle(s). Pick up the yarn from the end of the cast-on (now on your right-hand side) and begin working stitches from the left needle tip. There will be a slight gap at this join, but after a few rows of knitting, the gap will close up. In most patterns, the join is the beginning and end of rounds.

firefly mobius

sharon shoji

●●●○ page 19

Sizes To fit 34–38 (40–44, 46–50)" bust

Yarn Lorna's Laces Heaven (90% kid mohair, 10% nylon; 975 yd (887 m)/198 g):
• firefly, 1 skein

Gauge 12 sts and 20 rows = 4" in St st after blocking

Tools

- Size 10 (6 mm) needles
- Markers (m)
- Safety pins
- Stitch holders
- Yarn needle
- Size G/7 (4.5 mm) crochet hook



Lorna's Laces Heaven

4

see glossary for terms you don't know

Stitches

3×2 Rib:

Row 1 (RS) K3, *p2, k3; rep from * to end.

Row 2 (WS) P3, *k2, p3; rep from * to end.

BACK

Loosely CO 53 (63, 73) sts. Work in 3×2 rib (see Stitches) for 2½". Inc 1 st on next row—54 (64, 74) sts. Work even in St st (knit on RS; purl on WS) until piece measures 14 (14, 16)" from CO. **Armholes:** (RS) BO 4 sts and knit to end.

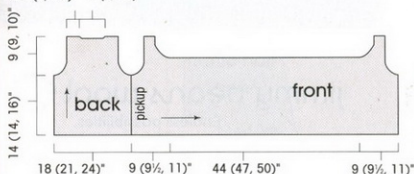
Next row (WS) BO 4 sts, purl to last 2 sts, p2tog. **Next row (RS)** Sl 1, BO 2 sts, knit to last 2 sts, k2tog. **Next row (WS)** Sl 1, BO 2 sts and purl to end. Dec 1 st each end of next 2 RS rows—36 (46, 56) sts rem. Work even in St st until armholes measure 9 (9, 10)", ending with a WS row.

Right shoulder: (RS) K8 (10, 12), turn, p2tog, p6 (8, 10), place rem 7 (9, 11) right-most sts on holder. BO center 20 (26, 32) sts—8 (10, 12) sts rem. **Left shoulder:** K8 (10, 12), turn, p6 (8, 10), p2tog. Place 7 (9, 11) sts on holder.

FRONT

With RS of back facing, beg at lower rib edge and ending at armhole, pick up and knit 44 (44, 50) sts along right-

2½ (3, 3½)" 7 (9, 11)"



V-neck:

Row 1 BO 5 sts, work in patt to end—37 sts rem.

Row 2 Work in patt.

Row 3 BO 8 sts, work in patt to end—29 sts rem.

Row 4 Work in patt.

Row 5 BO 8 sts, work in patt to end—21 sts rem.

Row 6 Work in patt.

Row 7 BO 10 sts, work in patt to end—11 sts rem.

Row 8 Work in patt.

BO all sts. **Back:** Rejoin yarn at neck edge. Beg with Row 2 (8, 2, 8) of chart, work 11 more rows in patt. Place sts of first tunic half on holder. When second tunic half is finished, leave sts on needle.

FINISHING

Place sts from first tunic half onto other end of larger circular needle. With yarn needle, graft pieces tog using Kitchener st. Sew sleeve and side seams. **Neckline:** With RS facing and smaller needle, pick up and knit 156 sts around neckline. Work in k2, p2 rib for 2". BO all sts in rib. Cross rib at base of V-neck and sew in place. **Lower edge:** With RS facing and smaller needle, pick up and knit 180 (212, 244, 276) sts around lower edge. Place marker (pm) and join for working in the rnd. Work in k2, p2 rib for 3". BO all sts in rib. Weave in loose ends. Block lightly to open up lace. □

hand edge of back. Work in St st, slipping the first st of every row, as foll: Counting first WS row as Row 1, work 5 rows even. At end of next and foll 4th (RS) rows, inc 1 st. At end of next 2 RS rows, inc 1 st—48 (48, 54) sts. **Next row** (WS) Loosely CO 22 (22, 26) sts at beg of row using the knitted method, purl to end. Work 11 (15, 19) rows even. **Next row** (WS) Loosely BO 3 sts, purl to end. **Neck:** Dec 1 st at neck edge (end of RS rows; beg of WS rows) every row until 60

(60, 66) sts rem, then every RS row only until 56 (56, 62) sts rem. Place a safety pin at neck edge to mark right neck shaping. **Center:** Cont in St st, slipping first st of every row, and work even for 44 (47, 50)", ending with a WS row. Place a safety pin at neck edge to mark left neck shaping. Inc 1 st at neck edge every RS row until there are 60 (60, 66) sts; then, beg with next RS row, inc 1 st at neck edge every row until there are 67 (67, 77) sts. **Next WS row** Loosely CO 3 sts with the knitted method, purl to end—70 (70, 80) sts. Work 11 (15, 19) rows even. **Next row** (WS) Loosely BO 22 (22, 26) sts—48 (48, 54) sts rem. Dec 1 st at armhole edge (end of RS rows) on next 3 RS rows. Work 3 rows even. **Next row** (RS) Dec 1 st at armhole edge. Work 5 rows even. BO all sts loosely.

FINISHING

Block pieces to schematic measurements. Sew live right-shoulder sts of back to right-front shoulder. With RS of front facing, give the front a full twist toward you (left shoulder comes toward you and around until RS is facing again). Sew live left-shoulder sts of back to front shoulder. Sew left side seam. With crochet hook and RS facing, evenly work 1 row of sc around each armhole. On neck edge, with RS facing, evenly work 1 row of sc from safety pin at right neck edge, along back neck to safety pin at left neck edge. Weave in ends. To wear, pull vest over head normally, then loop the long, twisted front over your head and fluff the folds. ☐

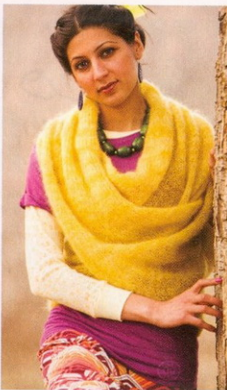
acidic seed stitch

kate jackson

●●○○○ page 20

Size 12" wide, 9" high, and 3" deep

Yarn Blue Sky Alpacas Bulky Hand Dyes (50% wool, 50%



alpaca; 45 yd (41 m)/100 g):

- #1016 bright gold, 3 skeins
- Gauge** 9 sts and 12 rows = 4" in double seed st

Tools

- Size 13 (9 mm): 24" circular needle
- One 1½" button
- Marker (m)
- Yarn needle
- Stitch holder

see glossary for terms you don't know

Stitches

Double Seed Stitch: (even number of sts; worked the same in rows or rnds)

Rows 1 and 2 *K1, p1; rep from * to end.

Rows 3 and 4 *P1, k1; rep from * to end.

BAG

Bottom: CO 22 sts. Work 8 rows in double seed st—piece should measure about 3" from CO. **Sides:** Beg at corner where yarn is attached, pick up and knit 4 sts along short side of bottom, then 22 sts along CO edge, then 4 sts along the rem short side—52 sts. Place marker (pm) and join for working in the rnd. Work 22 rnds in double seed st, ending with Row 2 of patt—bag should measure about 7½" from pickup row. **Next rnd** [Work 22 sts in patt, p2tog, k2tog] twice—48 sts rem. Work 3 rnds even. **Next rnd** P1, BO 20 sts in patt, p1, k1, p1—4 sts on right-hand needle. Place rem 24 sts on holder. Turn and work 4 sts only for strap. Work strap sts in patt for 32". Graft strap to the opposite 4 sts with Kitchener st, leaving the center 20 sts for flap. With RS facing, rejoin yarn to flap sts and work in patt for 12 rows. Make buttonhole as foll: **Next row** Work 9 sts in patt, BO 2 sts, work in patt to end. **Next row** Work 9 sts in patt, use the backward-loop method to CO 2 sts, work in patt to end. Work 4 rows in patt and dec 1 st each end of needle every RS row—16 sts rem. BO all sts. Weave a piece of yarn along the length of the strap to strengthen it and prevent stretching. Sew the button onto the main body of the bag, lining it up with the buttonhole. Weave in all loose ends. ☐



Blue Sky Alpacas
Bulky Hand Dyes

highlands zip

robin shroyer

●●●○○ page 21

Sizes 35½ (39, 42½, 47, 50½)" chest, zipped

Yarn Naturally Alpine 14-Ply (100% wool, 240 yd (220 m)/200 g):

- #3012 mustard (MC), 4 (4, 5, 5, 6) skeins
- #3000 dark brown (CC), 1 (1, 1, 1, 2) skein(s)

Yarn distributed by Fiber Trends

Gauge 14 sts and 20 rows = 4" in St st on larger needles

Tools

- Size 8 (5 mm): 24" circular needles
- Size 10 (6 mm): 3 straight needles
- 24 (26, 26, 30, 30)" separating zipper to fit opening and to match CC yarn
- Yarn needle
- Sewing needle and thread

see glossary for terms you don't know



6

Notes

Because separating zippers do not come in as many colors as yarn, it is wise to purchase the zipper before picking out the yarn.

When working corrugated ribbing, be careful to loosely strand the yarn not in use across the back. Always carry the same color in the dominant position.

BACK

With CC and smaller needle, CO 61 (67, 73, 79, 85) sts. Do not join.

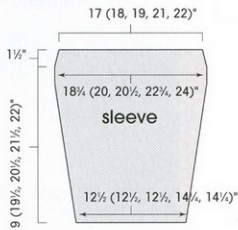
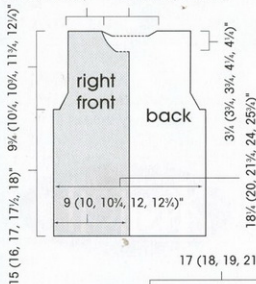
Row 1 (RS) P2, k3, *p3, k3; rep from * to last 2 sts, p2.

Row 2 (WS) K2, p3, *k3, p3; rep from * to last 2 sts, k2.

Row 3 Join MC, p2 with CC, k3 with MC, *p3 with CC, k3 with MC; rep from * to last 2 sts, p2 with CC.

Naturally Alpine 14-Ply

3 1/4" (4", 4 1/4", 5", 6 1/4") 6 1/4" (6 1/4", 7 1/4", 8", 8 1/4")



Row 4 K2 with CC, p3 with MC, *k3 with CC, p3 with MC; rep from * to last 2 sts, k2 with CC.

Rep Rows 3 and 4 three more times, then rep Row 3 once more. **Next row (RS)** Cont in patt, inc 3 (3, 3, 5, 5) sts evenly spaced, working incs in CC sections—64 (70, 76, 84, 90) sts. Drop CC. Change to larger needles and work in St st (knit on RS; purl on WS) with MC only until piece measures 15 (16, 17, 17 1/2, 18)" from CO. **Armholes:** BO 4 sts at beg of next 2 rows. Dec 1 st each end of needle on next 3 RS rows—50 (56, 62, 70, 76) sts rem.

Work even in St st until armholes measure 9 (9 1/2, 10, 11, 11 1/2)", ending with a WS row. **Neck:** K15 (17, 19, 22, 24), sl next 20 (22, 24, 26, 28) sts to a holder, join new yarn and k15 (17, 19, 22, 24). Working each side separately, dec 1 st at each neck edge on next 2 rows—13 (15, 17, 20, 22) sts rem. Work 1 row even. Place sts on holders.

LEFT FRONT

With CC and smaller needle, CO 32 (32, 38, 38, 44) sts. Do not join.

Row 1 (RS) P2, k3, *p3, k3; rep from * to last 3 sts, p3.

Row 2 (WS) *K3, p3; rep from * to last 2 sts, k2.

Row 3 Join MC, p2 with CC, k3 with MC, *p3 with CC, k3 with MC; rep from * to last 3 sts, p3 with CC.

Row 4 *K3 with CC, p3 with MC; rep from * to last 2 sts, k2 with CC.

Rep Rows 3 and 4 three more times, then rep Row 3 once more. **Next row (RS)** Inc 0 (3, 0, 4, 1) st(s) evenly spaced, working incs in CC sections—32 (35, 38, 42, 45) sts. Break off CC and change to larger needles.

Row 1 (RS) With MC, knit to last 9 sts, join CC, k3 with CC, k3 with MC, k3 with CC.



Row 2 (WS) P3 with CC, p3 with MC, p3 with CC, drop CC, purl to end with MC.

Rep last 2 rows for a total of 36 (38, 40, 40, 40) rows. Set aside. **Pocket:** Using spare size 10 needle and MC, beg on 3rd (4th, 4th, 4th, 7th) st from side edge, working into the 2nd row of MC above ribbing, *insert needle tip into st, going under the bar, wrap the yarn around the spare needle and pull up a st; rep from * across row until there are 21 (23, 26, 30, 30) sts on needle, ending in last MC st before CC stripe. Cont with pocket sts only as foll: Turn and purl 1 row. Work 4 more rows in St st.

Row 1 (RS) K3, ssk, knit to end.

Rows 2, 4, and 6 (WS) Purl to last 3 sts, k2, bring yarn to front, sl 1 pwise.

Rows 3 and 5 Knit.

Rep last 6 rows 4 (4, 5, 5, 5) more times—16 (18, 20, 24, 24) sts rem. Rep Rows 5 and 6 until 36 (38, 40, 40, 40) pocket rows total have been worked—pocket should measure same length as front. Break yarn, leaving a 12" tail. **Join pocket to front:** K2 (3, 3, 3, 6) sts of front, hold pocket needle parallel to front needle and *work 1 st from each needle tog as k2tog; rep from * until all pocket sts are joined, work last 9 sts of row in patt—32 (35, 38, 42, 45) sts on needle. Cont even in patt until front measures 15 (16, 17, 17½, 18)" from CO, ending with a WS row. **Armhole:** (RS) BO 4 sts, work in patt to end. Dec 1 st at armhole edge on the next 3 RS rows—25 (28, 31, 35, 38) sts rem. Work even in St st until armhole measures 6½ (6½, 7, 7½, 8)", ending with a RS row. **Neck:** (WS) Work 9 sts in patt, place sts just worked on a holder, break off CC, purl to end with MC. **Next row** (RS) Work to last 2 sts, k2tog. Dec 1 st at neck edge on RS rows in this manner 2 (3, 4, 5, 6) more times—13 (15, 17, 20, 22) sts rem. Work even until front measures same as back. Place sts on holder.

RIGHT FRONT

With CC smaller needle, CO 32 (32, 38, 38, 44) sts. Do not join.

Row 1 (RS) *P3, k3; rep from * to last 2 sts, p2.

Row 2 (WS) K2, *p3, k3; rep from * to end.

Row 3 Join MC, *p3 with CC, k3 with MC; rep from * to last 2 sts, p2 with CC.

Row 4 K2 with CC, *p3 with MC, k3 with CC; rep from * to end.

Rep Rows 3 and 4 three more times, then rep Row 3 once more. **Next row** (RS) Inc 0 (3, 0, 4, 1) st(s) evenly spaced, working incs in CC sections—32 (35, 38, 42, 45) sts. Change to larger needles.

Row 1 (RS) K3 with CC, k3 with MC, k3 with CC, knit to end with MC.

Row 2 (WS) With MC, purl to last 9 sts, p3 with CC, p3 with MC, p3 with CC.

Rep last 2 rows for a total of 36 (38, 40, 40, 40) rows. Set aside. **Pocket:** With spare size 10 needle and MC, beg in

10th st from opening edge (first MC st after stripe), and working into the 2nd row of MC above ribbing, *insert needle tip into st, going under the bar, wrap the yarn around the needle and pull up a st; rep from * across row until there are 21 (23, 26, 30, 29) sts on needle, ending 2 (3, 3, 3, 6) sts before end of row on front. Cont with pocket sts only as foll: Turn and purl 1 row. Work 4 more rows in St st.

Row 1 (RS) Knit to last 5 sts, k2tog, k2, bring yarn to front, sl 1 pwise.

Rows 2, 4, and 6 (WS) K3, purl to end.

Rows 3 and 5 Knit to last st, bring yarn to front, sl 1 pwise.

Rep last 6 rows 4 (4, 5, 5, 5) more times—16 (18, 20, 24, 24) sts rem. Rep Rows 5 and 6 only until 36 (38, 40, 40, 40) pocket rows total have been worked—pocket should measure same length as front. Break yarn, leaving a 12" tail. **Join pocket to front:** Work 9 sts of front in patt, hold pocket needle parallel to front needle and *work 1 st from each needle tog as k2tog; rep from * until all pocket sts are joined, then knit to end. Cont in patt until front measures 15 (16, 17, 17½, 18)" from CO, ending with a RS row.

Armhole: (WS) BO 4 sts, work in patt to end. Dec 1 st at armhole edge on the next 3 RS rows—25 (28, 31, 35, 38) sts rem. Work even in St st until armhole measures 6½ (6½, 7, 7½, 8)", ending with a WS row. **Neck:** (RS) Work 9 sts in patt, place sts just worked on a holder, break off CC, knit to end with MC. Purl 1 row. **Next row** (RS) Ssk, work to end. Dec 1 st at neck edge on RS rows in this manner 2 (3, 4, 5, 6) more times—13 (15, 17, 20, 22) sts rem. Work even until front measures same as back. Place sts on holder.

SLEEVES

With CC and smaller needle, CO 43 (43, 43, 49, 49) sts. Do not join.

Row 1 (RS) P2, k3, *p3, k3; rep from * to last 2 sts, p2.

Row 2 (WS) K2, p3, *k3, p3; rep from * to last 2 sts, k2.

Row 3 Join MC, p2 with CC, k3 with MC, *p3 with CC, k3 with MC; rep from * to last 2 sts, p2 with CC.

Row 4 K2 with CC, p3 with MC, *k3 with CC, p3 with MC; rep from * to last 2 sts, k2 with CC.

Rep Rows 3 and 4 three more times, then rep Row 3 once more. **Next row** (RS) Inc 1 st in a CC section—44 (44, 44, 50, 50) sts. Drop CC. Change to larger needles and work in St st with MC and inc 1 st each end of needle every 6 (5, 5, 5, 5)th row 11 (13, 14, 15, 17) times—66 (70, 72, 80, 84) sts. Work even until sleeve measures 19 (19½, 20½, 21½, 22)" from CO, ending with a WS row. Dec 1 st each end of needle on next 3 RS rows—60 (64, 66, 74, 78) sts rem. Loosely BO all sts.

FINISHING

With WS of fronts facing, gently pull on the yarn stranded across the stripes. This tightens up the stripe sts, for a

flatter appearance. Block pieces to measurements. Join shoulders with three-needle BO. **Neck:** With smaller circular needle and working ribbing as foll: [p3, k3; rep from * to last 3 sts, p3], work collar: work 9 sts from right-front holder, pick up and knit/purl (in patt) 13 (15, 15, 16, 16) sts along right-front edge, 2 (2, 1, 2, 2) st(s) along back neck edge, work 20 (22, 24, 26, 28) from back neck holder and, **AT THE SAME TIME**, inc 1 (inc 1, inc 1, inc 1, dec 1) at center of back neck sts, pick up and knit/purl 2 (2, 1, 2, 2) st(s) from back neck edge, 13 (15, 15, 16, 16) sts along left-front edge, then work 9 sts from left-front holder—69 (75, 75, 81, 81) sts total. Do not join.

Row 1 (WS) *K3 with CC, p3 with MC; rep from * to last 3 sts, k3 with CC.

Row 2 (RS) P3 with CC, k3 with MC; rep from * to last 3 sts, p3 with CC.

Work in ribbing for 8 more rows. Drop MC and work 2 more rows in ribbing with CC only. BO sts, leaving last st rem. **Left-front edge:** Place rem st on larger needles. Turn, pick up and knit 86 (90, 94, 98, 102) sts along front edge. Knit 1 WS row. BO all sts. Rep for right front, picking up sts from hem to neck edge. With MC and mattress st, join open pocket edge to front along the edge of the CC stripe. Sew 1" at bottom of pocket entrance closed. Sew sleeves into armholes. Sew side and sleeve seams. Weave in ends. Sew zipper in by hand using backstitch. At bottom of zipper, there is a thick woven section through which a hand sewing needle will not pass; use a dab of fabric glue to secure this to the sweater edge. ☐

canyon flowers scarf

cecily keim
●○○○ page 22

Size About 72" long
Yarn Garnstudio Inka (72% acrylic, 28% wool; 109 yd (100 m)/100 g):

- #3 orange/red/purple/brown, 1 skein

Yarn distributed by Aurora Yarns
Gauge Circle = 2 1/2" in diameter

Tools

- Size P (15 mm) crochet hook
- Yarn needle



Garnstudio Inka

see glossary for terms you don't know

Notes

The scarf consists of circles worked one after another. The circles lay on top of each other like layers of disks.

All stitches are worked in the fourth chain from the hook; the remaining three chains at the beginning of the round count as another double crochet. Slip-stitch in the top of this part of the chain to join.

SCARF

*Ch 4, 10 dc in 4th ch from hook, sl st in 4th ch of beg ch-4 to join; rep from * until scarf measures about 72" or desired length. Fasten off. Weave in loose ends. ☐

shaggy earflap

lisa shroyer

●●●○ page 22

Size 20" head circumference

Yarn GGH Savanna Color (43% alpaca, 23% linen, 19% wool, 15% nylon; 88 yd (81 m)/50 g):

- #105 green multi (MC), 2 balls

GGH Tibet (91% wool, 9% nylon; 47 yd (43 m)/50 g):

- #4 pink multi (CC), 1 ball

Yarns distributed by Muench Yarns
Gauge 16 sts and 20 rnds = 4" in St st in the rnd, with MC on smaller needles

Tools

- Size 8 (5 mm) double-pointed needles (dpn)
- Cotton yarn in similar color to MC
- Size 11 (8 mm) dpn
- Pom-pom maker
- Yarn needle



GGH Tibet

see glossary for terms you don't know

HAT

With smaller dpn and MC, CO 80 sts. Join for working in the rnd. Knit every rnd until piece measures 9 1/2" from CO, or desired total length. **Note:** Once sts are gathered, the length of the fabric will be shortened. Thread cotton yarn on yarn needle and draw through all sts 2 times. Pull tight to gather, knot ends, and weave in ends on WS.

Earflaps: Place hat on head and mark placement of earflaps (they should fall slightly closer to each other on the back of the head than they are to each other in the front). With smaller dpn, MC, and RS of hat facing, over placement of one earflap, pick up and knit 16 sts along CO edge, picking up 1 st for each CO st. Work 3 rows in St st (knit on RS; purl on WS). **Dec row (RS)** Sl first st, knit across, dec 1 st at edge nearest back of head. Earflaps are only shaped on the edge nearest the back and are not shaped on the edge near the face. **Next row (WS)** Sl first

st, purl across. Rep last 2 rows until 6 sts rem, ending with a RS row. BO all sts twice. Rep for second earflap. **Brim:** With larger dpn, CC, RS of hat facing, and beg at corner of CO edge and earflap pickup on front of hat, pick up and knit 13 sts, ending at corner of CO edge and second earflap. Turn and purl 1 row.

Dec row (RS) K1, k2tog, knit to last 3 sts, k2tog, k1. **Next row (WS)** Purl. Rep last 2 rows until 7 sts rem, ending with a RS row. BO all sts. **Hot edging:** With larger dpn, CC, and beg at brim pickup, pick up and purl 2 sts in edge, *BO 1 st, pick up and purl 1 st in edge; rep from * around all edges of MC, including earflap edges, ending at opposite side of brim. Fasten off last st.

FINISHING

Turn up brim and tack to hat front. Make a pom-pom with CC and sew to top of hat. Weave in ends. ☐



Tools

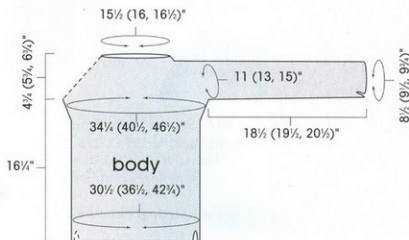
- Size 7 (4.5 mm): 24" and 16" circular needles
- Size 6 (4 mm): straight and double-pointed needles (dpn)
- Markers (m)
- Waste yarn
- Size 7 (4.5 mm) crochet hook (optional)
- Yarn needle

see glossary for terms you don't know

Notes

Sweater can be worn with generous ease for a comfy fit, or with little ease, as photographed, for a tailored look.

The MC sections of sleeves are worked on smaller needles than the Fair Isle section of sleeves, to prevent flaring when changing from solid-color stockinette to stranded knitting.



road to golden

lisa shroyer

●●●●● page 23

Sizes 34 1/2 (40, 46 1/2)\" bust circumference

Yarn Halcyon Yarns Botanica (100% wool; 160 yd (146 m)/114 g):

- #49 beige (MC), 4 (5, 6) skeins
- #43 gold, 1 (1, 2) skein(s)
- #47 olive, 1 skein
- #35 bright green, 1 skein
- #17 purple, 1 skein
- #10 red, 1 skein

Gauge 21 sts and 24 rnds = 4\" in Fair Isle patt on larger needle; 19 sts and 28 rnds = 4\" in St st with MC on larger

needle; 20 sts and 30 rnds = 4\" in St st with MC on smaller needles (worked on sleeves)



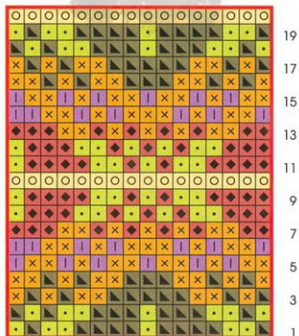
Halcyon Yarns Botanica

9



	beige (MC)		background color (olive, purple, or red)
	gold		foreground color (MC, gold, or bright green)
	olive		M1 using gold
	bright green		M1 using olive
	purple		M1 using purple
	red		pattern repeat

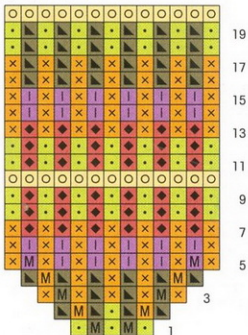
fair isle



sleeve



gusset



If you have a low bustline, you can work the Gusset chart during the third repeat of the Fair Isle pattern on the body, instead of during the fourth repeat. Once you begin the fourth repeat, work the gussets in established stripe pattern and in colors as established on body patterning. You may need more yarn if you choose to do this.

LOWER BODY (MAKE 2)

With longer circular needle and MC, CO 80 (96, 112) sts. Work 10 rows in garter st (knit every row), ending with a WS row. **Next row (RS)** Knit. **Next row (WS)** K5, purl to last 5 sts, k5. Rep last 2 rows 5 more times.

BODY

Join lower body pieces: Cont with longer circular needle, MC, and with RS of lower-body pieces facing, knit across one piece for front, then across the next piece for back, ending 5 sts before end of second piece. Place marker (pm), p5, and join for working in the rnd—160 (192, 224) sts total. M denotes beg of rnd, which falls at the right edge of the bottom vent, not at the center of the bottom vent. **Next rnd** (beg 5 sts past beg-of-rnd m) P5, k70 (86, 102) (to beg of next bottom vent), p10 (5 sts over each garter column), knit to m. Work 3 rnds in St st (knit every rnd). Join gold and knit 1 rnd. Work Rnds 1–20 of Fair Isle chart 3 times, ending last rnd 2 sts before m—piece measures about 13" from CO. Pm for new beg of rnd. **Next rnd** Work Rnd 4 of Gusset chart over 3 sts, removing old beg-of-rnd m, pm, work in Fair Isle patt over 77 (93, 109) sts, pm, work Gusset chart over next 3 sts, pm, work 77 (93, 109) sts in Fair Isle patt. Cont Fair Isle sections in patt, work through Rnd 20 of Gusset chart—180 (212, 244) sts: 154 (186, 218) sts for body and 13 sts under each arm for gussets. Place center 11 sts of each gusset onto waste yarn, leaving 2 outer sts of gusset on needle—these outer sts will become part of body, while the center 11 sts will be grafted to the sleeve at the underarm. Set body aside.

SLEEVES

With smaller straight needles and MC, CO 43 (47, 49) sts. Work 24 rows in garter st, ending with a WS row. Change to dpn, pm, and join for working in the rnd. Knit 1 rnd. **Next rnd** P5, knit to last 5 sts, p5. Rep last 2 rnds once more. Work even in St st until piece measures 8 (7, 6)" from CO. **Inc rnd** K1, M1, knit to last st, M1, k1—2 sts inc'd. Cont in St st, rep Inc rnd every 3 (2, 2)" 2 (4, 1) more time(s), then every 1" 0 (0, 11) times, then every 6th rnd 3 (4, 0) times—55 (65, 75) sts. Work even in St st until piece measures 18½ (19½, 20½)" from CO. **Next rnd** Place first 6 sts on waste yarn, join gold and knit to last 5 sts, place last 5 sts on same waste yarn—44 (54, 64) sts rem.

YOKE

With RS of body facing, beg at gap for left sleeve, join sleeve so that held underarm sts of sleeve correspond with held

unexpected red

nguyen le

●●○○○ page 28

Sizes 87 (98)" circumference at lower edge and 11½ (13)" high

Yarn Nashua Handknits Ivy (50% alpaca, 45% merino, 5% estrellina: 137 yd (125 m)/50 g):

• #2070 red, 3 (4) balls

Yarn distributed by Westminster Fibers

Gauge 18 sts and 26 rows = 4" in St st on larger needle

Tools

- Size 8 (5 mm); 29" circular needle
- Size 6 (4 mm); 29" circular needle
- Markers (m)
- Yarn needle
- Sewing needle
- Red thread
- ¾ yd 1½" wide dark-brown velvet ribbon



Nashua Handknits Ivy

11

see glossary for terms you don't know

CAPELET

With larger needle, CO 118 (134) sts. Do not join.

Rows 1 (WS) and 2 (RS) Knit.

Row 3 (WS) Purl.

Row 4 (RS) *K2tog; rep from * to end—59 (67) sts rem.

Row 5 Change to smaller needle, *p1, k1; rep from * to last st, p1.

Rows 6–19 Work even in rib.

Row 20 (RS) Change to larger needle, k4 (garter edge), *M1, place marker (pm), k4 (k5); rep from * 4 more times, M1, pm, k11 (k9), **pm, M1, k4 (k5); rep from ** 4 more times, pm, M1, k4 (garter edge).

Row 21 and all WS rows K4, purl to last 4 sts, k4.

Maintain 4 garter edge sts each end and cont in St st, working M1 before the first 6 m, and M1 after the last 6 m on every RS row 8 more times, then on every other RS row 8 (10) times—263 (295) sts. Stop working garter edges and work all sts in St st as foll:

Size small only:

Row 70 (RS) Removing m as you go, *k2, M1; rep from * to last 3 sts, k3—393 sts.

Rows 71–75 Work in St st.

Row 76 (RS) Purl.

Row 77 BO all sts kwise.

Size large only:

Row 80 (RS) Removing m as you go, *k2, M1; rep from * to last 3 sts, k3—441 sts.

Rows 81–85 Work in St st.

Row 86 (RS) Purl.

Row 87 BO all sts kwise.

FINISHING

Weave in ends. **Right ribbon:** Cut a piece of ribbon 7¼ (8¾)" long. **Left ribbon:** Cut a piece of ribbon 15¼ (17¼)" long. With sewing needle and thread, sew ribbon to the ribbed collar, with ¼" of ribbon to WS of collar. Trim tips of ribbon to form points. Tie ribbon like a man's tie or in a bow. □

hero pullover

ann budd

●●●○○ page 29

Sizes 40 (44, 47, 51)" chest circumference

Yarn Tahki Torino (100% merino: 94 yd (85 m)/50 g):

- #109 gray, 17 (19, 21, 23) balls

Gauge 18 sts and 26 rows = 4" in chevron patt on larger needles

Tools

- Size 9 (5.5 mm) needles
- Size 8 (5 mm); straight and 16" circular needles
- Yarn needle
- Removable markers (m)
- 7" metal zipper
- Sewing needle and thread
- Size G/6 (4.25 mm) crochet hook
- Stitch holders



Tahki Torino

12

see glossary for terms you don't know

BACK

With smaller needles, CO 91 (99, 107, 115) sts. **Set-up row (WS)** K1 (edge st; knit every row), *p1, k3; rep from * to last 2 sts, p1, k1 (edge st; knit every row). Working garter edge sts, cont in rib until piece measures 2 (2, 2½, 2½)" from CO, ending with a WS row. Change to larger needles and cont in rib until piece measures 14 (14½, 15, 15)" from CO, ending with a WS row. **Armholes:** Keeping in patt, BO 6 (8, 10, 10) sts at beg of next 2 rows—79 (83, 87, 95) sts rem. Work even until armholes measure 10 (10½, 11, 11½)", ending with a WS row. **Shoulders:** BO 8 (9, 9, 10) sts at beg of next 4 rows, then 8 (8, 8, 9) sts at beg of foll 2 rows—31 (31, 35, 37) sts rem. BO all sts.

FRONT

With smaller needles, CO 91 (99, 107, 115) sts. **Set-up row (WS)** K1 (edge st; knit every row), *p1, k3; rep from * to last 2 sts, p1, k1 (edge st; knit every row). Working garter edge sts, cont in rib until piece measures 2 (2, 2½, 2½)" from CO, ending with a WS row. Change to larger needles and, keeping garter edge sts at each end, rep Rows 1–16 of Chevron chart until piece measures 14 (14½, 15,

underarm sts of body and knit first st of sleeve with bright green, k1 with olive, work Sleeve chart to last 2 sts of sleeve, k1 with olive, k1 with bright green, pm, knit first st of front with bright green, work in established Fair Isle patt to last st of front, k1 with bright green, pm, knit first st of right sleeve with bright green, k1 with olive, work Sleeve chart to last 2 sts of sleeve, k1 with olive, k1 with bright green, pm, knit first st of back with bright green, work in established Fair Isle patt to last st of back, k1 with bright green, pm for beg of rnd—202 (244, 286) sts total. There are now 4 m placed around yoke. Cont in the rnd and cont in Fair Isle patt, working sleeves according to Sleeve chart in colors as established in patt on body, and beg decs as foll: **Dec rnd** *K1 with foreground color (MC, gold, or bright green), k1 with background color (olive, purple, or red), ssk, work in patt to 4 sts before next m, k2tog, k1 with background color, k1 with foreground color, sl m; rep from * 3 more times—8 sts dec'd. Cont in patt, rep Dec rnd every rnd 8 (12, 16) more times, ending with Row 10 (14, 18) of Fair Isle chart—130 (140, 150) sts rem. Cont in patt, rep Dec rnd every other rnd 7 (8, 9) times and, **AT THE SAME TIME**, end with Row 19 of Fair Isle chart (do not work Row 20); then work 1 rnd with gold, then cont in St st with MC only until decs are complete—74 (76, 78) sts rem. Work 6 rnds in garter st (purl 1 rnd, knit 1 rnd). BO all sts pwis.

FINISHING

If neckline tends to sag, work 1 row of sc, then 1 row of sl st, around neck edge with crochet hook and MC. Fasten off. With MC, graft underarm sts using Kitchener st. Weave in loose ends. Block aggressively to measurements. ☐

picot posey mittens

kate gilbert

●●●●● page 22

Size 8" hand circumference and 8½" from cuff to fingertip

Yarn Mission Falls 1824 Wool

(100% wool; 85 yd

(78 m)/50 g):

• #026 zinnia (red, A), 1 ball

• #028 pistachio (green, B),

1 ball

• #025 mallow (purple, C), 1 ball

• #0533 squash (orange, D), 1 ball

Yarn distributed by CNS Yarns

Gauge 20 sts and 29 rows = 4"

In St st

Tools

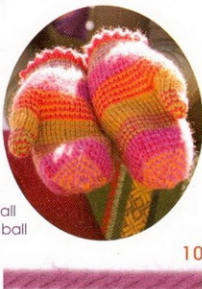
• Size 7 (4.5 mm): double-

pointed needles (dpn)

• Yarn needle

• Markers (m)

• Scrap yarn



10

Mission Falls 1824 Wool

see glossary for terms you don't know

MITTEN

Picot edge: With A, CO 40 sts. Join for working in the rnd.

Rnds 1–2 Knit.

Rnd 3 *Yo, k2tog; rep from * around.

Rnds 4–5 Knit.

Rnd 6 Join B. Fold hem up to WS and join hem by *working 1 st from the main needle tog with 1 st picked up from CO edge as k2tog; rep from * across row, fusing CO to WS of fabric.

Cuff: Alternating C and B every rnd, work as foll:

Rnds 7–15 Knit.

Gusset: Join A. Alternating A and C every rnd, work as foll:

Rnd 16 K14, M1R, place marker (pm), k12, pm, M1L, knit to end—42 sts.

Work 2 rnds even.

Rnd 19 Knit to m, M1R, k12, M1L, knit to end—44 sts.

Work 2 rnds even, then rep Rnd 19, then work 2 more

rnds even—46 sts. Break off C. Join D. Alternating D

and A every rnd, work as foll: [Work inc rnd, then 2 rnds

even] 3 times—52 sts. Break off A. Join B. **Hand:** Alternating B and D every rnd, work as foll:

Rnd 34 Knit to m, transfer 12 thumb sts to scrap yarn, use the backward-loop method to CO 2 sts, knit to end—42 sts on needles.

Rnd 35 K19, ssk, k2tog, knit to end—40 sts rem.

Work 7 rnds even. Break off D. Join A. Alternating A and

B every rnd, work as foll: Work 9 rnds even. Break off B.

Join C. Alternating A and C every rnd: Work 5 rnds even.

Rnd 57 [K8, k2tog] 4 times—36 sts rem.

Rnd 58 Work even.

Rnd 59 [K7, k2tog] 4 times—32 sts rem.

Rnd 60 Work even.

Join D. Alternating C and D every rnd, work as foll: Cont

as established, dec every other rnd 3 more times—20 sts

rem. Dec every rnd 5 times—4 sts rem. Break yarn.

Thread D tail through rem sts. Pull tight. **Thumb:** Transfer

thumb sts to 3 dpn. With B, pick up and knit 2 sts in the

2 sts that were CO when joining for the hand, then knit

all thumb sts—14 sts. **Next rnd** With D, knit the first

thumb st tog with the adjacent picked up st, knit to last

2 sts, ssk (the last thumb st and rem picked up st)—12

sts rem. Alternating B and D: Work 7 rnds even.

Break D. Join A. Alternating A and B: Work 6 rnds even.

Next rnd [K2, k2tog] 3 times—9 sts rem. **Next rnd**

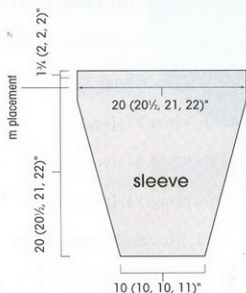
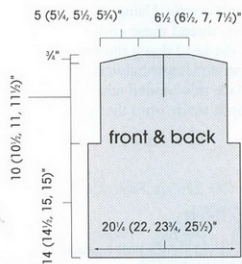
[K1, k2tog] 3 times—6 sts rem. **Next rnd** [K2tog]

3 times—3 sts rem. Break yarn. Thread A tail through

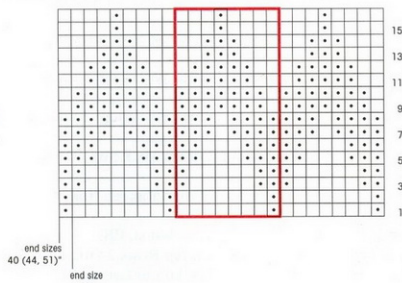
rem sts. Pull tight.

FINISHING

Weave in ends. ☐



chevron chart



15") from CO, ending with a WS row. **Armholes:** BO 6 (8, 10, 10) sts at beg of next 2 rows—79 (83, 87, 95) sts rem. Work even in patt until armholes measure about 5 1/4", ending with Row 8 of chart. **Neck slit:** (RS) Change to k3, p1 rib as before, positioning the p1 sts at the peak and valley of each zigzag and, **AT THE SAME TIME**, work across 39 (41, 43, 47) sts, join new yarn, and BO 1 st, work to end in rib—39 (41, 43, 47) sts each side. Working each side separately, cont in rib until armholes measure 7 1/2" (8, 8 1/2, 8 3/4)". At each neck edge, BO 8 (8, 8, 10) sts once, then 3 sts once, then 2 sts 1 (1, 2, 1) time(s), then dec 1 st every RS row 2 (2, 2, 3) times—24 (26, 26, 29) sts rem each side. Cont in rib until armholes measure same as back to shoulder. **Shoulders:** At each armhole edge, BO 8 (9, 9, 10) sts 2 times, then BO rem 8 (8, 8, 9) sts.

SLEEVES

With smaller needles, CO 47 (47, 47, 51) sts. **Set-up row** (WS) K1 (edge st; knit every row), k2, *p1, k3; rep from * to last 4 sts, p1, k2, k1 (edge st; knit every row). Working edges in garter st, cont in rib until piece measures 2 (2, 2 1/2, 2 1/2) from CO, ending with a WS row. Change to larger needles and, beg with next RS row, inc 1 st each end of needle (inside selvedge sts) every 4th row 12 (14, 15, 15) times, then every foll 6th row 10 (10, 11, 11) times, working new sts into patt—91 (95, 99, 103) sts. Work even until piece measures 20 (20 1/2, 21, 22)" from CO, ending with a WS row. Mark each end of last row with a removable marker (m) for armhole placement. Work even until piece measures 1 1/4 (2, 2, 2 1/4) from m. BO all sts in patt.

FINISHING

Block pieces to measurements. Weave in loose ends. Sew shoulder seams. Sew sleeve tops into armholes, matching m to underarm inset area. Sew sleeve and side seams. **Collar:** With smaller circular needle, RS facing, and beg at right-front neck edge, pick up and knit 28 (28, 30, 31) sts along right-front neck, 31 (31, 35, 37) sts across back neck, and 28 (28, 30, 31) sts along left-front neck—87 (87, 95, 99) sts total. Working each edge st in garter st, work center 85 (85, 93, 97) sts in rib until collar measures 3 1/4", ending with a WS row. BO all sts in patt. **Zipper:** Sew



Femme

in zipper (see Glossary), leaving edge st on each side of the front slit free for crochet edging. **Crochet edging:** Work sl st along edge st on each side of front slit, working from bottom to top. **Zipper facing:** (make 2) With smaller needles, CO 5 sts. Working each edge st in garter st, work center 3 sts in St st until piece measures 8" from CO. BO all sts. With sewing needle and thread, sew zipper facing to cover zipper tape on WS of front. Block again, if desired. ☐

teardrop scarves

celeste culpepper

●●●○ page 30

Sizes Blue scarf: 8½" wide and 51" long, after blocking; Pink scarf: 8½" wide and 72" long, after blocking.

Yarn Jade Sapphire Lacey Lamb (100% lambs wool; 825 yd (755 m)/60 g):

- #309 slate blue, 1 skein, or
- #202 soft pink, 1 skein

Gauge 19 sts and 47 rows = 4" in patt, after blocking

Tools

- Size 3 (3.25 mm): 32" circular needle
- 93 beads per scarf—Blue scarf: 4x6 mm Tear Drops in Pearl; Pink scarf: 3.44 mm White Pearl AB Drops; beads shown from www.earthfaire.com
- Dental floss threader
- Yarn needle



Jade Sapphire Lacey Lamb

13

see glossary for terms you don't know

Notes

This pattern utilizes a dental floss threader to place beads during knitting. See page 26 for other beaded knitting techniques that also work for these scarves. Stitch count changes throughout rows, creating the scalloped look on the scarf ends.

Work a yarnover at the beginning of a row by bringing the yarn over the top of the right needle before working the stitch on the left needle.

Stitches

Place bead (PB) using a dental floss threader:

Dental floss threaders can be purchased at most drug stores. The bright blue threaders, which look like tiny tennis racquets without the inside strings, come in a package of 10 to 20 threaders. Take a dental floss threader and pull on each side of its loop. The threader will separate into one long strand. Cut both ends of the threader so you

have a 6" length, shaped like the letter U. Thread it through the stitch as if to knit, bring both ends of the threader together, and remove this threaded stitch from your left-hand needle. Using the two ends of the threader held together, thread these ends through the hole in the bead. Push the bead down the threader and over the stitch. The stitch is now between the bead and the threader. Place this beaded stitch on the left-hand needle and then slip it pwise onto the right-hand needle without working it.

SCARF

Blue scarf: CO 226 sts. **Pink scarf:** CO 326 sts. Do not join.

Row 1 Knit.

Row 2 Yo, k2tog, k1, yo, knit to end.

Row 3 Yo, k2tog, k1, yo, knit to last st, PB (see Stitches).

Rows 4 and 5 Yo, k2tog, k1, yo, k2tog, yo, knit to last st, PB.

Rows 6 and 7 Yo, k2tog, k1, [yo, k2tog] 2 times, yo, knit to last st, PB.

Row 8 Yo, k2tog, k1, [yo, k2tog] 3 times, yo, k2, *yo, k2tog; rep from * to last 9 sts, k8, PB.

Row 9 Yo, k2tog, k1, [yo, k2tog] 3 times, yo, knit to last st, PB.

Rows 10 and 11 Yo, k2tog, k1, [yo, k2tog] 4 times, yo, knit to last st, PB.

Rows 12 and 13 Yo, k2tog, k1, [yo, k2tog] 5 times, yo, knit to last st, PB.

Rows 14 and 15 Yo, k2tog, k1, [yo, k2tog] 6 times, yo, knit to last st, PB.

Row 16 Yo, k2tog, k1, [yo, k2tog] 7 times, yo, *k2tog, yo; rep from * to last st, PB.

Row 17 Yo, k2tog, k1, [yo, k2tog] 7 times, yo, knit to last st, PB.

Rows 18 and 19 Yo, [k2tog] 2 times, [yo, k2tog] 7 times, knit to last st, PB.

Rows 20 and 21 Yo, [k2tog] 2 times, [yo, k2tog] 6 times, knit to last st, PB.

Rows 22 and 23 Yo, [k2tog] 2 times, [yo, k2tog] 5 times, knit to last st, PB.

Row 24 Yo, [k2tog] 2 times, [yo, k2tog] 4 times, k1, *yo, k2tog; rep from * to last st, PB.

Row 25 Yo, [k2tog] 2 times, [yo, k2tog] 4 times, knit to last st, PB.

Rows 26 and 27 Yo, [k2tog] 2 times, [yo, k2tog] 3 times, knit to last st, PB.

Rows 28 and 29 Yo, [k2tog] 2 times, [yo, k2tog] 2 times, knit to last st, PB.

Rows 30 and 31 Yo, [k2tog] 2 times, yo, k2tog, knit to last st, PB.

Row 32 Yo, [k2tog] 2 times, k1, *yo, k2tog; rep from * to last st, PB.

Row 33 Yo, [k2tog] 2 times, knit to last st, PB.

Rep Rows 2–33 once more, then rep Rows 2–30 once more. **Next row** [K2tog] 3 times, knit to last st, PB.

BO row [K2tog] 2 times, sl resulting 2 sts back to left needle, BO very loosely to last 2 sts, k2tog, BO rem st. Cut yarn, leaving a 12" tail. Weave tail in thoroughly.

FINISHING

Soak scarf in warm water and a gentle wool wash. Wrap in towel and squeeze out excess water. Lay flat and pin to finished size.

hideout coat

katie himmelberg

●●●○ Page 31

Sizes 42 (46, 50, 53)" bust, closed

Yarn Rowan Big Wool (100% merino; 87 yd (80 m)/100 g): #018 latte, 12 (13, 15, 16) balls
Yarn distributed by Westminister Fibers

Gauge 9 sts and 14 rows = 4" in St st

Tools

- Size 15 (10 mm) needles, plus spare needle
- Size N/15 (10 mm) crochet hook
- Stitch holders
- DK weight yarn in matching color
- Markers (m)
- Yarn needle
- Five 1½" buttons
- Five large hook and eyes or snaps

see glossary for terms you don't know

Note

Instead of working buttonholes, buttons are sewn to the top layer and hook and eyes are used as the functioning closure.

BACK

CO 56 (60, 64, 68) sts. Knit 4 rows. **Next row** (WS) Purl. **Next row** (RS) Knit. Cont in St st until piece measures 17", ending with a WS row.

Row 1 (dec row) K1, ssk, knit to last 3 sts, k2tog, k1.

Rows 2, 4, and 6 (WS) Purl.

Rows 3 and 5 (RS) Knit.

Rep Row 1–6 two more times—50 (54, 58, 62) sts rem.

Armholes: BO 3 sts at beg of next 2 rows.

Row 1 (dec row) K1, ssk, knit to last 3 sts, k2tog, k1.

Row 2 (WS) Purl.

Rep Rows 1 and 2 two more times—38 (42, 46, 50) sts rem.

Work even in St st until armholes measure 9 (9½, 10½, 11½)". **Next row** (RS) K9 (10, 11, 12), join new yarn, BO 20 (22, 24, 26) sts, k9 (10,

11, 12). Working each side separately, purl 1 WS row. At each armhole edge, BO 4 (5, 6, 7) sts. Work 1 row even, then BO rem 5 sts.

RIGHT FRONT

CO 30 (32, 34, 36) sts. Knit 4 rows. **Next row** (WS) Purl to last 2 sts, k2. **Next row** (RS) Knit. Rep last 2 rows until piece measures 17", ending with a WS row.

Row 1 (dec row) Knit to last 3 sts, k2tog, k1.

Row 2 (WS) Purl to last 2 sts, k2.

Row 3 (RS) Knit.

Rows 4, 5, and 6 Work even in patt.

Rep Rows 1–6 two more times. Knit 1 RS row. **Note:** Neck and armhole shaping occur at the same time. Read directions carefully all the way through. **Armhole:** (WS) BO 3 sts at beg of row.

Row 1 (dec row) Knit to last 3 sts, k2tog, k1.

Row 2 (WS) Work even in patt.

Rep last 2 rows 2 more times. **AT THE SAME TIME:**

Neck: (RS; worked on first Row 1 of armhole shaping)

K2, M1P, p1, place marker (pm), knit to end.

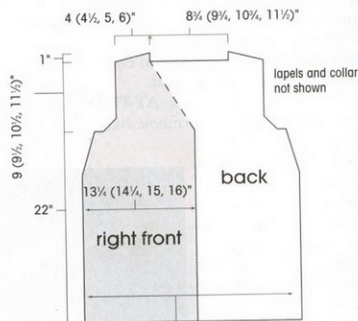
Row 1 (WS) Work even in patt.



14



Rowan Big Wool



24½ (26½, 28½, 30)\"/>

8 (9½, 12½, 14½)\"/>

13½ (15, 17½, 19½)\"/>

13½ (14½, 15, 16)\"/>

Row 2 (RS) K2, M1P, purl to m, remove m, p1, pm. Rep last 2 rows 7 (8, 10, 12) more times. **Next row (WS)** Work even in patt. **Next row (RS)** K2, M1P, work to m, remove m, work even in patt to end. Work 3 rows even in patt. Rep last 4 rows once more—32 (35, 39, 43) sts. Work 1 WS row even in patt. **Next row (RS)** BO 21 (23, 27, 31) sts, work to end. Work 1 WS row even; do not turn. Use backward-loop method to CO 21 (23, 27, 31) sts. Work 1 row even. **Next row (WS)** BO 4 (5, 6, 7) sts, work to end. Work 1 RS row even. BO 5 sts at beg of next WS row—23 (25, 28, 31) sts rem. **Collar:** Cont in patt on rem sts until piece measures about 7½ (8½, 9½, 10½)" from lapel split. Place sts on waste yarn or holder.

LEFT FRONT

CO 30 (32, 34, 36) sts. Knit 4 rows. **Next row (WS)** K2, purl to end. **Next row (RS)** Knit. Rep last 2 rows until piece measures 17", ending with a WS row.

Row 1 (dec row) K1, ssk, knit to end.

Row 2 (WS) K2, purl to end.

Row 3 (RS) Knit.

Rows 4, 5, and 6 Work even in patt.

Rep Rows 1–6 two more times. **Note:** Neck and armhole shaping occur at the same time. Read directions carefully all the way through. **Armhole:** (RS) BO 3 sts at beg of row. Work 1 WS row even.

Row 1 (dec row) K1, ssk, knit to end.

Row 2 (WS) Work even in patt.

Rep last 2 rows 2 more times. **AT THE SAME TIME:**

Neck: (RS; same row as armhole BO row) Knit to last 3 sts, pm, p1, M1P, k2.

Row 1 (WS) Work even in patt.

Row 2 (RS) Knit to 1 st before m, sl next st, remove m, place slipped st back on left needle, pm, purl to last 2 sts, M1P, k2.

Rep last 2 rows 7 (8, 10, 12) more times. **Next**

row (WS) Work even in patt. **Next row (RS)**

Knit to m, remove m, work even in patt to last 2 sts, M1P, k1. Work 3 rows even in patt. Rep last 4 rows once more—32 (35, 39, 43) sts. **Next**

row (WS) BO 21 (23, 27, 31) sts, work to end. Work 1 RS row even; do not turn. Use backward-loop method to CO 21 (23, 27, 31) sts. Work 1

row even. **Next row (RS)** BO 4 (5, 6, 7) sts, work to end. Work 1 RS row even. BO 5 sts at beg of next RS row—23 (25, 28, 31) sts rem. **Collar:** Cont in patt on rem sts until piece measures about 7½ (8½, 9½, 10½)" from lapel split. Place sts on waste yarn or holder.

SLEEVES

CO 30 (32, 34, 36) sts. Knit 4 rows. Work 10 rows in St st.

Size 42" only:

Work even until piece measures 20" from CO.

Size 46" only:

Cont in St st and inc 1 st each end of needle when piece measures 14" from CO—34 sts. Work even until piece measures 20" from CO.

Sizes 50 (53)" only:

Cont in St st and inc 1 st each end of needle every 10 (8) rows until there are 40 (44) sts. Work even until piece measures 20" from CO.

All Sizes:

Shape sleeve top: BO 3 sts at beg of next 2 rows. Dec row (RS) K1, ssk, knit to last 3 sts, k2tog, k1. Work 1 row even. Rep last 2 rows 2 more times—18 (22, 28, 32) sts rem. BO all sts.

FINISHING

Sew shoulder seams. Place held collar sts on needles. Holding RS tog, use the three-needle method to BO all sts. Sew collar to back-neck opening. Work 1 row of sc around lapel split (BO and CO edges of lapel). Sew lapel edgings tog for about 5", or as desired. Using mattress st, sew fronts to back at side seams and sew sleeve seams. Set in sleeves. Block lightly using steam. Mark button placement along right front, beg just below lapel, and ending about 7" from bottom of front. Sew buttons on securely. Sew hook-and-eye closures below buttons to close as desired. ☐

two-over-two vest

jennifer l. appleby

●●○○ page 32

Sizes 33½ (37½, 40½, 44½, 48½)
bust

Yarn Classic Elite Premiere
(50% Pima cotton, 50% Tencel;
108 yd (99 m)/50 g):

- #5287 almost green, 4 (5, 5, 6, 6) skeins

Gauge 28 sts and 32 rows = 4"
in cable and-rib patt; 20 sts and
34 rows = 4" in garter st

Tools

- Size 6 (4 mm) needles
- Spare needle
- Cable needle (cn)



- Stitch holders
- Yarn needle

see glossary for terms you don't know

Stitches

2/2RC: Place next 2 sts on cn and hold in back, k2, k2 from cn.

Cable and Rib Pattern:

Row 1 (RS) P1, k2, p2, k4, *p2, k2, p2, k4; rep from * to last 5 sts, p2, k2, p1.

Row 2 (WS) K1, p2, k2, p4, *k2, p2, k2, p4; rep from * to last 5 sts, k2, p2, k1.

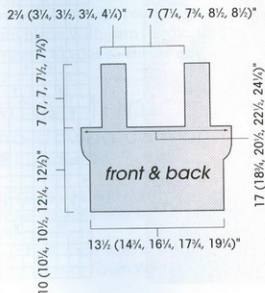
Rows 3 and 4 Rep Rows 1 and 2.

Row 5 P1, k2, p2, 2/2RC, *p2, k2, p2, 2/2RC; rep from * to last 5 sts, p2, k2, p1.

Row 6 Rep Row 2.
Rep Rows 1–6 for patt.

BODY (MAKE 2)

CO 94 (104, 114, 124, 134) sts. Work in cable and rib patt for 6 (6, 6, 7½, 7½)"; ending with Row 6 of patt. Bust: Knit next row, dec 1 st at center of each cable—85 (94, 103, 112, 121) sts rem. Work in garter st (knit every row) until bust area measures 4 (4½, 4½, 4½, 5)"; ending with a WS row. **Armholes and neck:** BO 11 (13, 15, 16, 18) sts, k14 (16, 17, 19, 21) and place these sts just worked on a holder, BO 35 (36, 39, 42, 43) sts, k14 (16, 17, 19, 21), BO 11 (13, 15, 16, 18) sts. **Straps:** With WS facing, rejoin yarn to 14 (16, 17, 19, 21) sts on needle and work in garter st



until strap measures 7 (7, 7, 7½, 7½)"; ending with a WS row. Leave sts on a holder. Place other strap sts on needle and, with WS facing, join yarn and work as for first strap.

FINISHING

Join pieces at shoulders using three-needle BO. Sew side seams. Weave in loose ends. □

ingenue blouse

phoenix bess

●●○○○ page 33

Sizes To fit 30 (34, 38, 42, 46)" bust

Yarn Classic Elite Wool Bam Boo (50% wool, 50% bamboo; 118 yd (108 m)/50 g):

- #1660 treasure, 11 (11, 12, 13, 15) skeins

Gauge 23 sts and 31 rows = 4" in St st on size 6 needle worked in the rnd; about 11½ sts = 1" in ribbing, relaxed

Tools

- Size 4 (3.5 mm): 16" circular needle
- Size 5 (3.75 mm): 16" circular needle
- Size 6 (4 mm): 16" and 24" circular needles
- Yarn needle
- Stitch markers (m)
- ½" wide black ribbon



Classic Elite Wool Bam Boo

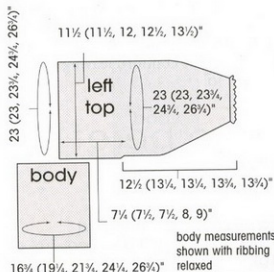
see glossary for terms you don't know

Stitches

Seed Stitch: (even number of sts)

Row 1 *K1, p1; rep from * to end.

Row 2 *P1, k1; rep from * to end.





Seed Stitch: (odd number of sts)

Rows 1 and 2 *K1, p1; rep from * to last st, k1.

BODY

With size 5 needle, CO 188 (216, 244, 272, 300) sts very loosely. Join for working in the rnd. Work in 2x2 rib for 3". Change to smallest needle and cont in rib for 7 (7, 8, 8, 9)" more. BO all sts loosely.

TOP (MAKE 2)

With largest circular needle, CO 132 (132,

137, 143, 154) sts very loosely. Work 1" in seed st. Work 6 1/4 (6 1/4, 6 1/4, 7, 8)" in St st. Join for working in the rnd. Work in St st (knit all rnds) for 11 1/4 (12, 12, 12 1/2, 12 1/2)" more.

Dec Rnd 1 *K5, k2tog; rep from * to last 6 (6, 4, 3, 0) sts, k6 (6, 4, 3, 0)—114 (114, 118, 120, 132) sts rem.

Knit 1 rnd even.

Dec Rnd 2 *K2tog; rep from * to end of rnd—57 (57, 59, 60, 66) sts rem.

Knit 1 rnd. **Eyelet rnd** *Yo, k2tog; rep from * to end.

Knit 1 rnd. **Ruffle:** *K1, k1f&b; rep from * to end—85 (85, 88, 90, 99) sts. Rep last rnd 2 more times. Purl 1 rnd. BO all sts.

FINISHING

Lay two top pieces with ruffled ends pointing away from each other and flat edges touching. Thread yarn needle with yarn and sew tops tog 6" up from bottom edge (back seam). Sew front seam tog for 3" up from bottom edge but do not cut yarn. Try on garment and determine desired depth of front V-neck and place a marker at desired point. Remove top and finish seaming front. Join tops to body: Lay top and body flat and pin top to bottom, easing top to fit. Sew in place. Weave in ends and lightly steam to block. Thread ribbon through eyelet holes in sleeves and adjust for comfort, leaving enough ribbon to tie into a bow. □

art deco beret

kathy veeza

●●○○ page 34

Size 20" band circumference, stretched

Yarn Sheep Shop Yarn Sheep 3 (70% wool, 30% silk; 325 yd (297 m)/100 g):

• #A109 lavender, 1 skein

Gauge 23 sts and 34 rnds = 4" in St st in the rnd on larger needle

Tools

- Size 2 (2.75 mm): double-pointed needles (dpn)
- Size 4 (3.5 mm): 24" circular needle and dpn
- 528 size 6/0 seed beads
- Marker (m)
- Yarn needle
- Smooth waste yarn in similar weight as main yarn
- Thin elastic

see glossary for terms you don't know



17

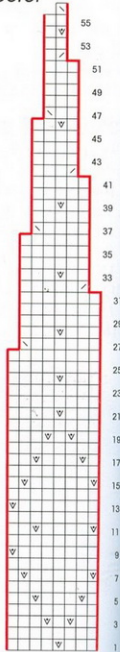
Sheep Shop Sheep 3

Stitches

S1B1: Sl 1 with yarn in front (wyf), slide 1 bead up yarn and in front of the slipped st, bring yarn to back of work to prepare for knitting the next st.

- knit
 / k2tog
 \ ssk
 ▽ S1B1 (see Stitches)
 □ pattern repeat

beret



Notes

Since only some of the rounds are beaded, use two separate balls of yarn, or both ends of a center-pull ball. Pre-string one end or strand with all the beads and use it during rounds that require beading; leave the other end plain and use it for all other rounds. The end or strand that isn't in use can be carried up at the beginning of the round. See page 26 for more info on beaded knitting.

BERET

Before you begin, string all beads onto the yarn. As you knit, gently move them toward the other end of the ball as needed. If you're using two separate balls of yarn, join the beaded ball when you begin the chart. **Brim:** With smaller dpn and waste yarn, CO 44 sts. Distribute sts evenly on 4 dpn (11 sts each needle), place marker (pm), and join for working in the rnd, being careful not to twist sts.

Change to main yarn and work as foll:

Rnd 1 *K1, yo; rep from * to end—88 sts.

Be careful not to drop yos worked on last rnd.

Rnd 2 *Sl 1 with yarn in front (wyf), k1; rep from * to end.

Rnd 3 *P1, sl 1 with yarn in back (wyb); rep from * to end.

Next rnd *P1, k1; rep from * to end. Work in rib as established until piece measures $\frac{3}{4}$ " from CO. **Sides and crown:**

Change to larger dpn. Knit 1 rnd. **Next rnd** K1f&b into each st around—176 sts. Work even in St st until piece measures $\frac{3}{4}$ " from end of rib. Remove waste yarn from CO—sts will now stretch to fit circular needle. Change to circular needle. Work Rows 1–56 of Beret chart placing beads and dec as shown and changing to dpn when necessary. After Rnd 56—22 sts rem. Knit 2 rnds. **Next**

rnd *K2tog; rep from * 10 more times—11 sts rem. Knit 1 rnd. **Next rnd** *K2tog; rep from * to last st, k1—6 sts rem. Knit 1 rnd. **Nub:** Change to smaller dpn and cont in St st until nub measures $\frac{1}{8}$ " long. Cut yarn, leaving an 8" tail. Thread tail through rem sts, gather sts, and pull tail to inside of work.

FINISHING

Weave in loose ends. Rinse in wool wash. Fold at Rnd 16 of chart, shape into a circle, and lay flat to dry. When dry, make sure all beads are centered and nudge off-center ones into place. With yarn needle, thread a length of thin elastic near CO edge to ensure a snug fit. ☐

fishtail tunic

emma-dauida catmur

●●●○ page 34

Sizes 32 (34, 36, 38, 40)" bust/hip, stretched to fit

Yarn Vickie Howell Collection Love (70% bamboo, 30% silk; 99 yd (90 m)/50 g):

• #252 Ennis & Jack, 8 (8, 9, 9, 10) skeins

Yarn distributed by South West Trading Company

Gauge 16 sts and 16 rows = 4" in fish-tail lace; 24 rows = 4" in lace border

Tools

- Size 7 (4.5 mm): straight needles, 32" circular needle, and double-pointed needles (dpn)
- Markers (m)
- Yarn needle



see glossary for terms you don't know

Notes

The lace pattern gives this

garment a lot of stretch. It will stretch to the finished measurements above. As it stretches in width, it will pull up in length. The relaxed gauge in pattern is about six stitches per inch; hence the measurements that are shown on the schematic.

Each row of the lace border pattern begins with a k2tog wyb. This creates a simultaneous yarnover and decrease. The loop created by this technique is useful for seaming the border to the body. To work the k2tog, hold the yarn in front of the right needle, insert the right needle into the stitches on the left needle, wrap the yarn over the top of the needles and complete the K2tog as normal. When working the p2tog, hold the yarn in back of the right needle until the needles are positioned, then wrap the yarn over the needles to the front to complete the stitch.

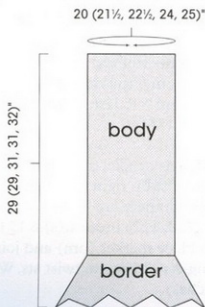
Stitches

Fishtail Lace: (multiple of 10 sts + 1)

Rnd 1 K1, *yo, k3, sl 1, k2tog, pssso, k3, yo, k1; rep from * to end.

Rnds 2, 4, 6, and 8 Purl.

Rnd 3 K1, *k1, yo, k2, sl 1, k2tog, pssso, k2, yo, k2; rep from * to end.



18

Vickie Howell
Collection Love

Rnd 5 K1, *k2, yo, k1, sl 1, k2tog, pssso, k1, yo, k3; rep from * to end.

Rnd 7 K1, *k3, yo, sl 1, k2tog, pssso, yo, k4; rep from * to end.

Lace Border: (worked over 23 sts)

Row 1 (RS) K2tog with yarn in front (wyf), k2, yo, p2tog, k2, yo 2 times (to be counted as 2 sts on next row), p3tog, k2, [yo, p2tog] 4 times, yo, k2—24 sts on needle.

Row 2 (WS) P2tog with yarn in back (wyb), k13, p1 (last 2 sts have been worked into double yo from previous row; this happens again on Rows 6, 10, and 14), k4, yo, p2tog, k2.

Row 3 K2tog wyf, k2, yo, p2tog, k4, p2tog, k2, [yo, p2tog] 4 times, yo, k1, k1 through back loop (tbl).

Row 4 P2tog wyb, k18, yo, p2tog, k2.

Row 5 K2tog wyf, k2, yo, p2tog, k2, yo 2 times, p2tog, yo 2 times, p2tog, k1, [yo, p2tog] 4 times, yo, k1, k1 tbl—26 sts.

Row 6 P2tog wyb, k12, p1, k2, p1, k4, yo, p2tog, k2.

Row 7 K2tog wyf, k2, yo, p2tog, k10, [yo, p2tog] 4 times, yo, k1, k1 tbl—27 sts.

Row 8 P2tog wyb, k21, yo, p2tog, k2—27 sts.

Row 9 K3tog wyf, k2, yo, p2tog, k2, yo 2 times, p2tog, *yo 2 times, p3tog; rep from * once, k1, [yo, p2tog] 4 times, yo, k1, k1 tbl—29 sts.

Row 10 P2tog wyb, k12, [p1, k2] 2 times, p1, k4, yo, p2tog, k2.

Row 11 K2tog wyf, k2, yo, p2tog, k13, [yo, p2tog] 4 times, yo, k1, k1 tbl—30 sts.

Row 12 P2tog wyb, k24, yo, p2tog, k2.

Row 13 K2tog wyf, k2, yo, p2tog, k2, yo 2 times, p2tog, *yo 2 times, p3tog; rep from * twice, k1, [yo, p2tog] 4 times, yo, k1, k1 tbl—32 sts.

Row 14 P2tog wyb, k12, [p1, k2] 3 times, p1, k4, yo, p2tog, k2—32 sts.

Row 15 K2tog wyf, k2, yo, p2tog, k16, [yo, p2tog] 4 times, yo, k1, k1 tbl—33 sts.

Row 16 P2tog wyb, k27, yo, p2tog, k2.

Row 17 K2tog wyf, k2, yo, p2tog, k26, k1 tbl.

Row 18 BO 10 sts very loosely, knit to last 4 sts, yo, p2tog, k2—23 sts rem.

Seed Stitch: (odd number of sts)

Rnd 1 *K1, p1; rep from * to last st, k1.

Rnd 2 *P1, k1; rep from * to last st, p1.

BODY

Picot CO: With circular needle, using the knitted method, *CO 5 sts, BO 2 sts, sl st on right needle back to left needle; rep from * until there are 40 (43, 47, 50, 53) picots, then CO 1 (2, 0, 1, 2) more st(s)—121 (131, 141, 151, 161) sts total. Place marker (pm) and join for working in the rnd, being careful not to twist sts. Work 4 rnds in seed st (see Stitches).

Rnd 5 *K2tog, yo; rep from * to last st, k1.

Rnds 6–9 Work in seed st.

Work Rnds 1–8 of fish-tail lace (see Stitches) 17 (17, 18, 18, 19) times.

Work 4 (4, 5, 5, 6) rnds in seed st. **Next rnd**

*K2tog, yo; rep from * to last st, k1. Work 13 (13, 14, 14, 15) rnds in seed st. **Next rnd**

*K2tog, yo; rep from * to last st, k1. Work 4 (4, 5, 5, 6) rnds in seed st.

Very loosely, BO all sts.

Note: Use a larger needle to BO if necessary.

LACE BORDER

With straight needles, CO 23 sts. Work Rows

1–18 of lace border patt (see Stitches) 11 (12, 12, 13, 14) times. Very loosely, BO all sts. Cut yarn, leaving an 18" tail.

FINISHING

Sew straight selvedge of lace border to body BO, easing to fit and matching tension as much as possible. Sew CO and BO ends of border tog. **Straps:** With dpn, make four 11" I-cords. With body lying flat, sew straps 3½–4" in from side edges. Weave in loose ends. □

herringbone skirt

elissa sugishita

●●●○ Page 35

Sizes 28½ (32½, 36½) waist circumference and 36 (41, 46) hip circumference

Yarn Elsebeth Lavold Silky Wool (65% wool, 35% silk; 191 yd (175 m)/50 g):

• #41 mustard, 7 (8, 9) balls
Yarn distributed by Knitting Fever

Gauge 20 dc and 12 rows = 4"; 22 sts and 10½ rows = 4" in patt

Tools

- Size E/4 (3.5 mm) crochet hook
- Yarn needle
- 1½ yd of 1" wide elastic
- Sewing needle and thread



Note

Skirt is made in two pieces from the waist down.

Stitches

Dc3tog: Yo, insert hook in next st and draw up a loop, yo and draw through 2 loops, [yo, insert hook in foll st and draw up a loop, yo and draw through 2 loops] 2 times, yo and draw through all loops on hook—3 sts dec'd to 1.

SKIRT (MAKE 2)

Waistband: Ch 73 (83, 93). Dc in 4th ch from hook and in each ch across, turn—71 (81, 91) dc. Work even in dc until piece measures 2½". **Body:** **Set-up row** Ch 3 (counts as dc), dc in each of next 3 sts, *hdc in each of next 3 sts, dc in each of next 7 sts; rep from * 5 (6, 7) more times, hdc in each of next 3 sts, dc in each of next 4 sts, turn.

Row 1 (RS) Ch 3, dc in same st, dc in each of next 3 sts, *dc3tog (see Stitches), dc in each of next 3 sts, 3 dc in next st, dc in each of next 3 sts; rep from * 5 (6, 7) more times, dc3tog, dc in each of next 3 sts, 2 dc in last st, turn.

Row 2 Rep Row 1.

Row 3 (inc row) Ch 3, dc in same st, dc in each of next 3 sts, *dc3tog, dc in next st, 2 dc in next st, dc in next st, 3 dc in next st, dc in each of next 3 sts; rep from * 5 (6, 7) more times, dc3tog, dc in next st, 2 dc in next st, dc in next st, 2 dc in last st, turn—78 (89, 100) sts.

Row 4 Ch 3, dc in same st, dc in each of next 4 sts, *dc3tog, dc in each of next 3 sts, 3 dc in next st, dc in each of next 4 sts; rep from * 5 (6, 7) more times, dc3tog, dc in each of next 3 sts, 2 dc in last st, turn.

Row 5 (inc row) Ch 3, dc in same st, dc in next st, 2 dc in next st, dc in next st, *dc3tog, dc in each of next 4 sts, 3 dc in next st, dc in next st, 2 dc in next st, dc in next st; rep from * 5 (6, 7) more times, dc3tog, dc in each of next 4 sts, 2 dc in last st, turn—85 (97, 109) sts.

Row 6 Ch 3, dc in same st, dc in each of next 4 sts, *dc3tog, dc in each of next 4 sts, 3 dc in next st, dc in each of next 4 sts; rep from * 5 (6, 7) more times, dc3tog, dc in each of next 4 sts, 2 dc in last st, turn.

Rows 7–11 Rep Row 6.

Row 12 (inc row) Ch 3, dc in same st, dc in each of next 2 sts, 2 dc in next st, dc in next st, *dc3tog, dc in each of next 4 sts, 3 dc in next st, dc in each of next 2 sts, 2 dc in next st, dc in next st; rep from * 5 (6, 7) more times, dc3tog, dc in next 4 sts, 2 dc in last st, turn—92 (105, 118) sts.

Row 13 Ch 3, dc in same st, dc in each of next 4 sts, *dc3tog, dc in each of next 5 sts, 3 dc in next st, dc in each of next 4 sts; rep from * 5 (6, 7) more times, dc3tog, dc in each of next 5 sts, 2 dc in last st, turn.

Row 14 (inc row) Ch 3, dc in same st, dc in each of next 5 sts, *dc3tog, dc in next st, 2 dc in next st, dc in each of

next 2 sts, 3 dc in next st, dc in each of next 5 sts; rep from * 5 (6, 7) more times, dc3tog, dc in next st, 2 dc in next st, dc in each of next 2 sts, 2 dc in last st, turn—99 (113, 127) sts.

Row 15 Ch 3, dc in same st, dc in each of next 5 sts, *dc3tog, dc in each of next 5 sts, 3 dc in next st, dc in each of next 5 sts; rep from * 5 (6, 7) more times, dc3tog, dc in each of next 5 sts, 2 dc in last st, turn.

Rep Row 15 until piece measures 17" from beg, or 8" less than desired total length. **Flare:**

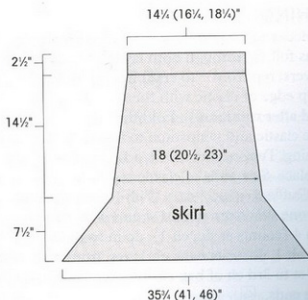
Row 1 (inc row) Ch 3, dc in same st, dc in each of next 2 sts, 2 dc in next st, dc in each of next 2 sts, *dc3tog, dc in each of next 2 sts, 2 dc in next st, dc in each of next 2 sts, 3 dc in next st, dc in each of next 2 sts, 3 dc in next st, dc in each of next 2 sts, 3 dc in next st, dc in each of next 2 sts, 2 dc in next st, dc in each of next 2 sts, 2 dc in last st, turn—113 (129, 145) sts.

Row 2 Ch 3, dc in same st, dc in each of next 6 sts, *dc3tog, dc in each of next 6 sts, 3 dc in next st, dc in each of next 6 sts; rep from * 5 (6, 7) more times, dc3tog, dc in each of next 6 sts, 2 dc in last st, turn.

Row 3 (inc row) Ch 3, dc in same st, dc in each of next 2 sts, [2 dc in next st] 2 times, dc in each of next 2 sts, *dc3tog, dc in each of next 2 sts, [2 dc in next st] 2 times, dc in each of next 2 sts, [2 dc in next st] 2 times, dc in each of next 2 sts; rep from * 5 (6, 7) more times, dc3tog, dc in each of next 2 sts, [2 dc in next st] 2 times, dc in each of next 2 sts, 2 dc in last st, turn—141 (161, 181) sts.

Row 4 Ch 3, dc in same st, dc in each of next 8 sts, *dc3tog, dc in each of next 8 sts, 3 dc in next st, dc in each of next 8 sts; rep from * 5 (6, 7) more times, dc3tog, dc in each of next 8 sts, 2 dc in last st, turn.

Row 5 (inc row) Ch 3, dc in same st, [dc in each of next 2 sts, 2 dc in next st] 2 times, dc in each of next 2 sts, *dc3tog, [dc in each of next 2 sts, 2 dc in next st] 2 times, dc in each of next 2 sts, 3 dc in next st, [dc in each of next



2 sts, 2 dc in next st] 2 times, dc in each of next 2 sts; rep from * 5 (6, 7) more times, dc3tog, [dc in each of next 2 sts, 2 dc in next st] 2 times, dc in each of next 2 sts, 2 dc in last st, turn—169 (193, 217) sts.

Row 6 Ch 3, dc in same st, dc in each of next 10 sts, *dc3tog, dc in each of next 10 sts, 3 dc in next st, dc in each of next 10 sts; rep from * 5 (6, 7) more times, dc3tog, dc in each of next 10 sts, 2 dc in last st, turn.

Row 7 (inc row) Ch 3, dc in same st, dc in next st, [dc in each of next 2 sts, 2 dc in next st] 2 times, dc in each of next 3 sts; rep from * 5 (6, 7) more times, dc3tog, dc in next st, [dc in each of next 2 sts, 2 dc in next st] 2 times, dc in next 3 sts, 2 dc in last st, turn—197 (225, 253) sts.

Row 8 Ch 3, dc in same st, dc in each of next 12 sts, *dc3tog, dc in each of next 12 sts, 3 dc in next st, dc in each of next 12 sts; rep from * 5 (6, 7) more times, dc3tog, dc in each of next 12 sts, 2 dc in last st, turn.

Rep Row 8 twelve more times or to desired length. Fasten off.

FINISHING

Block pieces according to yarn label. With RS tog, join side seams as foll: Sc through both layers, *ch 2, sc through both layers; rep from * to end of seam. With WS facing, align top edge of elastic with the row above set-up row (worked after waistband). Fold the top half of the dc rows over the elastic and whipstitch to inside of skirt, leaving a 1" opening. Try on skirt for fit, adjust elastic length, and pin in place. Sew ends of elastic tog. Whipstitch 1" opening closed. **Ruffled edge hem:** With RS facing, join yarn to hem at one side seam with sl st and work around hem as foll: Ch 4 (counts as dc, ch 1), dc in same st, ch 1, *dc in next st, ch 1, dc in same st, ch 1; rep from * all around hem, sl st to 3rd ch of beg ch-4 to join. Fasten off. Weave in loose ends. □



breton girl

kat coyle

●●●○ Page 40

Sizes 34 (37, 40, 43, 46)" bust

Yarn Elle Stretch DK (90% acrylic, 10% stretch polyester; 170 yd (155 m)/50 g):

- #014 cream (MC), 5 (6, 7, 8, 9) balls
- #056 navy (CC), 3 (3, 4, 4, 5) balls

Yarn distributed by Unicorn Books

Gauge 25 sts and 37 rows = 4" in St st with larger needle

Tools

- Size 4 (3.5 mm): 24" circular needle
- Size 5 (3.75 mm): 24" circular needle
- Waste yarn
- Removable markers (m)
- Stitch holders
- Yarn needle



20

Elle Stretch DK

see glossary for terms you don't know

Stitches

Stripe Sequence: With MC, work 8 rows in St st. With CC, work 2 rows in St st.

BODY (MAKE 2)

With smaller needle and CC, CO 118 (128, 138, 146, 156) sts and work 8 rows in St st. **Turning row** (RS) Purl. Change to larger needle and work 10 rows in St st. Work 10 rows of stripe sequence (see Stitches) 1 time. Work in stripe sequence and work as foll: **Waist: Dec row** (RS) K1, ssk, knit to last 3 sts, k2tog, k1. **Next row** (WS) Purl. Rep last 2 rows 6 (6, 4, 4, 1) more time(s). **Next row** (RS) Rep Dec row. Work 3 rows even. Rep last 4 rows 7 (7, 9, 9, 12) more times—88 (98, 108, 116, 126) sts rem; piece should measure about 7 (7, 7½, 7½, 8¼)" from turning row. **Bust: Inc row** (RS) K1, M1R, work to last st, M1L, k1.

Work 9 rows even. Rep last 10 rows 8 (5, 5, 3, 3) more times—106 (110, 120, 124, 134) sts.

Sizes 37 (40, 43, 46)" only:

Next row (RS) Rep Inc row. Work 11 rows even. Rep last 12 rows 2 (2, 4, 4) more times—116 (126, 134, 144) sts.

All sizes:

Work 2 rows even—piece should measure about 17 (17½, 18, 18½, 19)" from turning row. **Armholes:** BO 6 (8, 10, 11, 13) sts at beg of next 2 rows—94 (100, 106, 112, 118) sts rem. Work 54 (60, 64, 68, 74) rows even in St st. **Neck:** Work 18 (20, 22, 25, 27) sts in patt, slip 58 (60, 62, 62, 64) sts to holder, join new yarn and knit to end. Working

both sides separately in patt, work 9 rows in St st—armholes should measure about 7 (7¼, 8¼, 8½, 9¼)". BO all shoulder sts.

SLEEVES

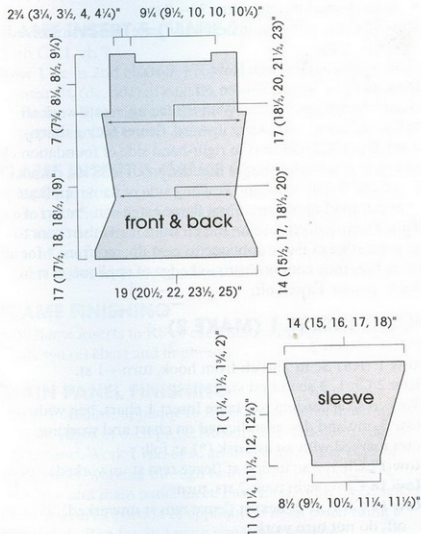
With smaller needle and CC, CO 54 (60, 66, 70, 72) sts and work 8 rows in St st. **Turning row (RS)** Purl. Change to larger needle and work 10 rows even in St st. Beg working stripe sequence and inc 1 st each end of needle on next RS row and every foll 4th row 6 (5, 4, 4, 9) times—68 (72, 76, 80, 92) sts. Inc 1 st each end of needle on every 6th row 10 (11, 12, 13, 10) times—88 (94, 100, 106, 112) sts. **Next row (WS)** Purl—piece should measure about 11 (11¼, 11½, 12, 12½)" from hem edge. Mark the first and last st of the next RS row for seaming. Work 10 (11, 14, 16, 18) more rows. BO all sts.

FINISHING

Block pieces to measurements, according to yarn label instructions. Sew shoulder seams. **Neckband:** With smaller needle, CC, and beg at right-back shoulder edge of neckline (beg at shoulder seam), pick up and knit 7 sts along open neck edge, knit held back sts, pick up and knit 12 sts along open neck edge, knit held front sts, pick up and knit 7 sts along rem open neck edge—142 (146, 150, 150, 154) sts total. Do not join; work back and forth in rows as foll:

Rows 1, 3, and 5 (WS) Purl.

Row 2 (RS) Knit.



Row 4 *K8, k2tog; rep from * to last 2 (6, 0, 0, 4) sts, knit to end—128 (132, 135, 135, 139) sts rem.

Row 6 (turning row) Purl.

Rows 7 and 9 Purl.

Row 8 *K9, M1; rep from * to last 2 (6, 0, 0, 4) sts, knit to end—142 (46, 150, 150, 154) sts.

Row 10 Knit.

Row 11 Purl.

Do not BO. Cut a tail three times the length of neck circumference and thread through yarn needle. Fold down neck and sew live sts one at a time to purl ridges of the first row of neck sts. Sew neckband seam. Sew sleeves into armholes. Sew side seams, starting 2" up from bottom of hem. Tack facings to WS. Sew sleeve seams, leaving hems open. Weave in ends. □

flaming tote

regina rioux gonzalez

●●●○ page 41

Size 7½" wide at base, 15" wide near top of bag, 14½" tall, and 9½" deep

Yarn Valley Yarns Berkshire (85% wool, 15% alpaca; 141 yd (129 m)/100 g):

- #21 red purple (MC), 6 balls
- #15 red (CC1), 2 balls
- #10 gold (CC2), 2 balls

Yarn distributed by WEBS

Gauge 14½" sc and 16 rows = 4"

Tools

- Size 7 (4.5 mm) crochet hook
- Markers (m)
- 22" red heavy-duty zipper
- Yarn needle
- Sewing needle
- Sewing thread
- Pins



21

Valley Yarns Berkshire

see glossary for terms you don't know

MAIN PANEL (MAKE 2)

With MC, ch 29.

Row 1 (RS) Sc in 2nd ch from hook and in each ch across, turn—28 sc.

Place marker (pm) in first and last st. **Inc row** Ch 1, 2 sc in first st, sc in each st to last st, 2 sc in last st, turn—2 sts inc'd. Rep Inc row every other row 2 more times, then work Inc row every 3rd row 3 times, then every 4th row 7 times—54 sc. Work 6 rows even.

Dec Row 1 Ch 1, sc2tog, sc in each st to last 2 sts, sc2tog, turn—2 sts dec'd.

Rep Dec Row 1 every other row 2 more times, then every row 3 times—42 sc rem.

Dec Row 2 Ch 1, [sc2tog] 2 times, sc in each st to last 4 sts, [sc2tog] 2 times, turn—4 sts dec'd.

Rep Dec Row 2 once more—34 sc rem. Fasten off. Pm in first and last st of last row. Main panel border: With RS facing, rotate panel so that foundation ch (bottom of panel) is at the top. Join CC1 with sl st to marked st on right-hand side. Work 28 sc along bottom of panel; do not fasten off or remove m. Rotate panel and work 59 sc along side (1 sc per row), rotate panel and work 34 sc along top of panel, rotate panel and work 59 sc along side (1 sc per row), sl st in beg sc to join. Fasten off.

FLAME APPLIQUÉ (MAKE 2)

Flame base: With CC2, ch 29.

Row 1 (RS) Sc in 2nd ch from hook and in each ch across, turn—28 sts.

Work in sc according to Flame Base chart, beg with Row 2, inc and dec as indicated on chart and working rows marked with an asterisk (*) as foll:

Row 21 Ch 1, sc in next 22 sts (leave rem sts unworked), turn.

Row 22 Ch 1, sc2tog, sc in next 20 sts, turn—21 sts.

Flame extension 1:

Row 23 Ch 1, 2 sc in first st, sc in next 7 sts, turn—9 sts.

Cont as charted through Row 29—6 sts.

Row 30 Ch 1, 2 sc in first st, sc in next 3 sts (leave rem sts unworked), turn—5 sts.

Cont as charted through Row 33—2 sts.

Row 34 Ch 1, sc2tog. Fasten off and turn work.

Flame extension 2:

Row 23 With RS facing, skip 2 sts to the left of flame extension 1 on Row 22 and attach CC2 in 3rd st, sc in next 10 sts, turn—10 sts.

Cont as charted through Row 37—12 sts.

Row 38 Ch 1, sc in next 7 sts (leave rem sts unworked), turn.

Row 39 Ch 1, sc2tog, sc in next 4 sts, 2 sc in last st, turn—7 sts.

Cont as charted through Row 46—2 sts.

Row 47 Ch 1, sc2tog. Fasten off and turn work.

Flame extension 3:

Row 38 With WS facing, skip 1 st to the left of flame extension 2 on Row 37 and attach CC2 in 2nd st, sc in next 4 sts, turn—4 sts.

Cont as charted through Row 40—2 sts.

Row 41 Ch 1, sc2tog. Fasten off; do not turn work.

Flame extension 4:

Row 21 With RS facing, skip 3 sts to the left of flame extension 2 on Row 20 and attach CC2 in 4th st, sc in next 6 sts, turn—6 sts.

Cont as charted through Row 33—8 sts.

Row 34 Ch 1, sc2tog, sc in next 4 sts (leave rem sts unworked), turn—5 sts.

Cont as charted through Row 37—2 sts.

Row 38 Ch 1, sc2tog. Fasten off.

Flame Appliqué Border: With RS facing, rotate work so that foundation ch is facing upward, flames facing downward. Join CC2 with sl st to right-hand side of foundation ch and work 1 row of sc across foundation ch—28 sts; do not fasten off. Rotate work and sc along side of flame appliqué (1 sc per row) to the tip of first flame extension, *at tip of flame extension, ch 2, sc in 2nd ch from hook, then cont to sc along edge of flame appliqué to next tip; rep from * for all flame tips, then cont in sc around edge of appliqué, sl st in beg sc to join. Fasten off.

FLAME INSERT 1 (MAKE 2)

With CC1, ch 2.

Row 1 (RS) Sc in 2nd ch from hook, turn—1 st.

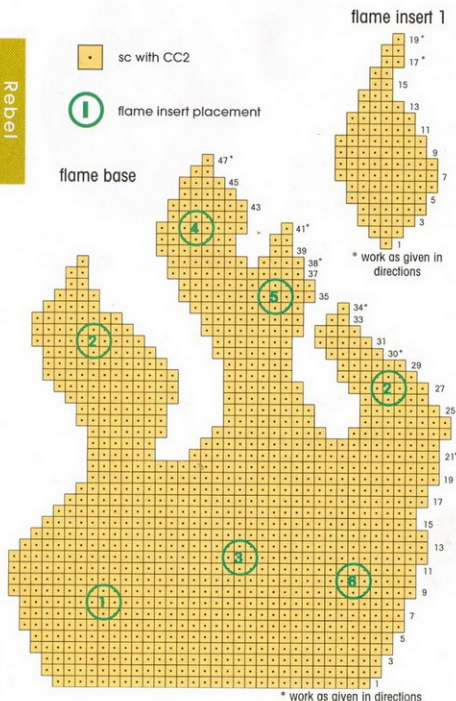
Row 2 Ch 1, 3 sc in first st, turn.

Work in sc according to Flame Insert 1 chart, beg with Row 3, inc and dec as indicated on chart and working rows marked with an asterisk (*) as foll:

Row 17 Ch 1, 2 sc in first st (leave rem st unworked), turn.

Row 18 Ch 1, sc in next 2 sts, turn.

Row 19 Ch 1, sc in next st (leave rem st unworked). Fasten off; do not turn work.



Flame insert 1 border: With CC1, work as for flame appliqué border. Fasten off, leaving enough yarn attached to sew insert to flame appliqué.

FLAME INSERT 2 (MAKE 4)

With CC1, ch 11.

Row 1 Sc in 2nd ch from hook, hdc in next st, 3 dc in next st, hdc in next 2 sts, sc in next 2 sts, sl st in next 3 sts. Fasten off, leaving enough yarn attached to sew insert to flame appliqué. (No border needed.)

FLAME INSERT 3 (MAKE 2)

Work as for flame insert 1 through Row 16.

Row 17 Ch 1, sc2tog. Fasten off; do not turn.

Top and bottom insert extensions and border:

Row 1 With CC1, ch 8, join with sl st to bottom of insert, sc along side of insert to upper edge (1 sc per row), ch 5, sl st in 2nd ch from hook, sc in next ch, hdc in next ch, dc in next ch, sc along opposite side of insert to lower edge, 2 dc in each of first 2 ch, hdc in next 3 ch, sc in next 2 ch, sl st in last ch. Fasten off, leaving a long enough tail to sew insert to flame appliqué.

FLAME INSERT 4 (MAKE 2)

With CC1, ch 8.

Row 1 Sc in 2nd ch from hook, hdc in next ch, 3 dc in next ch, hdc in next 2 ch, sc in next ch, sl st in last ch. Fasten off, leaving a long enough tail to sew insert to flame appliqué. (No border needed.)

FLAME INSERT 5 (MAKE 2)

With CC1, ch 7.

Row 1 Sc in 2nd ch from hook, hdc in next ch, (hdc, dc) in next ch, (dc, hdc) in next ch, hdc in next ch, sl st in last ch. Fasten off, leaving a long enough tail to sew insert to flame appliqué. (No border needed.)

FLAME INSERT 6 (MAKE 2)

With CC1, ch 19.

Row 1 Sl st in 2nd ch from hook, sc in next 2 sts, hdc in next 3 sts, 2 dc in next 3 sts, hdc in next 4 sts, sc in next 3 sts, sl st in next 2 sts. Fasten off, leaving a long enough tail to sew insert to flame appliqué. (No border needed.)

FLAME FINISHING

Sew flame inserts to RS of each flame appliqué, positioning as shown on chart and in photo.

MAIN PANEL FINISHING

Pin WS of flame appliqué to RS of main panel, matching bottom edges of each piece. Attach CC1 at bottom edge of main panel. Work 1 rnd of sc around entire outer edge of main panel, working through both layers where edges of appliqué and main panel meet. Fasten off. With CC2, sew rem unsecured portion of appliqué to main panel using a whipstitch. Rep for 2nd main panel and appliqué.

BOTTOM PANEL (MAKE 2)

With MC, ch 35.

Row 1 (RS) Sc in 2nd ch from hook and in each ch across, turn—34 sts.

Work even in sc for 6 more rows. **Dec row** Ch 1, sc2tog, sc in each st to last 2 sts, sc2tog, turn—2 sts dec'd. Rep Dec row every 7th row 3 more times—26 sts rem. Pm in first and last st of last row. Work even for 30 rows. Pm in first and last st of last row. **Inc row** Ch 1, 2 sc in first st, sc in each st to last st, 2 sc in last st, turn—2 sts inc'd. Rep Inc row every 7th row 3 more times—34 sts. Work 7 rows even. Fasten off. **Join bottom panels:** With WS tog and working through both layers, sc in each st of first row of panel—34 sts. (RS of this row is the RS of the joined bottom panel.) Fasten off. With RS facing, rep for last row of panel.

TOP PANEL (MAKE 2)

With MC, ch 17.

Row 1 Sc in 2nd ch from hook and in each ch across, turn—16 sts.

Work 1 row even.

Dec Row 1 Ch 1, sc in each st to last 2 sts, sc2tog, turn—1 st dec'd.

Work 2 rows even.

Dec Row 2 Ch 1, sc2tog, sc in each st across, turn—1 st dec'd.

Work 2 rows even. Rep the last 6 rows 3 more times; then work Dec Row 1 once more—7 sts rem. Work 3 rows even. Pm in first and last st of last row. Work 2 rows even. Pm in first and last st of last row. Work 2 rows even.

Inc Row 1 Ch 1, 2 sc in first st, sc in each st across, turn—1 st inc'd.

Work 2 rows even.

Inc Row 2 Ch 1, sc in each st to last st, 2 sc in last st, turn—1 st inc'd.

Work 2 rows even. Rep last 6 rows 3 more times, then work Inc Row 1 again—16 sts. Work 2 rows even. Fasten off.

TOP PANEL STRAIGHT EDGE BORDER

Place top panels side by side, straight edges tog, to determine RS of each panel piece. With RS facing and MC, sc in each row along straight edge of one panel—92 sts. Fasten off. Rep for other panel.

JOIN TOP PANELS TO BOTTOM PANEL

With WS tog, place top panel pieces (straight edges about ½" apart) over bottom panel, aligning short ends. Pin short ends tog. (Top panels will be slightly longer than bottom panel.) With MC and working through both layers, sc in each st across short edge—34 sts. Rep for other short edge.

TOP/BOTTOM PANEL OUTSIDE BORDERS

With RS facing and MC, beg at seam joining top and bottom panels and keeping m in place, work 88 sc along

bottom panel and 92 sc along top panel, sl st in beg sc to join—180 sts total. With CC1, sc in each sc around, sl st in beg sc to join. Fasten off. Rep for other edge of top and bottom panels.

TOP/BOTTOM PANEL SIDE PIPING

With RS of top panel facing, attach CC1 in front post of st immediately to the right of the seam that joins top panels to bottom panel. Sc in this st, then sc through front loop only of 34 sts of seam that joins top panels to bottom panel, then sc in the front post of the st immediately to the left of sts just worked, turn; working through rem loop of seam, sc in each sc across, sl st in beg sc to join, turn—70 sts. Ch 1, working through back loop of near st and front loop of far st, sc sts of previous rnd tog—35 sts. Fasten off. Rep for other seam.

STRAPS (MAKE 2 FINISHED STRAPS)

Strap body: With CC1, ch 81.

Row 1 Sc in 2nd ch from hook and in each ch across, turn—80 sts.

Work even in sc for 2 rows. Fasten off. Work 2nd strap body as for first but do not fasten off; turn work. **Strap border:** With WS tog and working through both layers, join strap bodies as foll: Work 80 sc across long side of strap body, rotate work, 6 dc into middle of short side of strap body, rotate work, 80 sc along rem long side of strap body, rotate work, 6 dc into middle of short side of strap body, sl st in beg sc to join. Fasten off.

BAG CONSTRUCTION

With WS tog, pin main panels to top/bottom panel using m as a guide. Match m on bottom of main panels to m on bottom panel of bag; match m on top of main panels to m on top panels of bag. Pin seams. With CC1 and beg at bottom edge of bag, sl st through back loop of each main-panel st and front loop of each top/bottom-panel st around bag to join panels, sl st in beg sl st to join. Fasten off. Rep for other side of bag. Position a strap on one main panel in a U shape and pin in place. With CC1, sew strap to panel. Rep for other strap on other side of bag. Pin zipper to inside of top panel of bag and sew in place using sewing needle and thread. Weave in ends. ☐

seaweed sweater

kat coyle

●●●●● Page 42

Sizes 38 (42, 46, 50, 54)" bust

Yarn Filatura di Crosa Baby Kid Extra (80% kid mohair; 20% nylon; 268 yd [245 m]/25 g):

- #480 apple green (MC), 3 (3, 4, 4, 4) balls
- #497 chrome green (CC1), 2 (3, 3, 3, 3) balls
- #498 yellow (CC2), 1 (2, 2, 2, 2) ball(s)

Yarn distributed by Tahki Stacy Charles

Gauge 16 sts and 18 rows = 4" in St st with MC on largest needles after blocking;

14 sts and 19 rows = 4" in St st with 2 strands of CC1 and 1 strand of CC2 held tog on largest needles after blocking

Tools

- Size 8 (5 mm): 24" circular needle
- Size 9 (5.5 mm): straight needles
- Size 10 (6 mm): straight needles
- Markers (m)
- Removable markers (m)
- Bobbins
- Yarn needle



22

Filatura di Crosa Baby
Kid Extra

see glossary for terms you
don't know

Notes

CC1 is used doubled **AND** held together with CC2 throughout for the ribbed, intarsia, and armband sections.

Stitches are decreased when working in contrasting colors and increased when returning to main color. Rows are used instead of measurements because the row gauge changes after blocking.

BACK

With middle-size needles and 2 strands of CC1 and 1 strand of CC2 held tog, CO 76 (84, 92, 100, 108) sts. Work in 2x2 rib for 10 rows. Change to largest needles and 1 strand of MC and work 46 rows in St st (knit on RS; purl on WS). **Next row (RS)** Beg working Seaweed chart, working with 2 strands of CC1 and 1 strand of CC2 held tog as indicated. Work through Row 78 (78, 80, 82, 84) of chart—69 (77, 83, 92, 98) sts rem. **Armholes:** BO 5 (6, 6, 7, 9) sts at beg of next 2 rows as shown on chart—59 (65, 72, 78, 82) sts rem. Work to end of rib—116 (118, 122, 126, 132) rows completed after rib; 66 (72, 78, 84, 88) sts. Mark center 24 (26, 30, 32, 34) sts for back neck. BO all sts.

FRONT

Work as for back through Row 58 (60, 64, 68, 74) of chart—70 (78, 85, 94, 99) sts rem. **Neck:** (RS) Work 37 (41, 45, 49, 47) sts in patt, join new yarn, BO center 2 sts, work in patt to end. Working each side separately according to chart, dec 1 st at each neck edge every foll 4th (4th, 2nd, 2nd, 2nd) row 7 (10, 2, 4, 6) times, then every foll 6th (6th, 4th, 4th, 4th) row 4 (2, 12, 11, 10) times and, **AT THE SAME TIME**, beg on Row 79 (79, 81, 83, 85) of chart, shape armholes as for back—21 (23, 24, 26, 27) sts rem each side when all shaping is complete. Work 5 rows even in patt. BO all sts.

SLEEVES

With middle-size needles and 2 strands of CC1 and 1 strand of CC2 held tog, CO 36 (36, 40, 40, 44) sts. Work in 2x2 rib for 10 rows. Change to largest needles and MC. Work 2 rows in St st. **Inc row** (RS) K1, M1R, work to last st, M1L, k1—2 sts inc'd. **Next row** (WS) Purl. Work 2 rows even in St st. Rep last 4 rows 2 (7, 7, 9, 9) more times—42 (52, 56, 60, 64) sts. Work 2 rows even. [Rep Inc row, then work 5 rows even] 7 (4, 4, 3, 3)

times—56 (60, 64, 66, 70) sts. Rep Inc row, then work 3 rows even—58 (62, 66, 68, 72) sts. Cut MC. **Armband:** Join 2 strands of CC1 and 1 strand of CC2 held tog. **Next row** (RS) K4 (5, 4, 5, 3), k2tog, [k5 (5, 6, 6, 6), k2tog] 7 (7, 7, 7, 8) times, k3 (6, 4, 5, 3)—50 (54, 58, 60, 63) sts rem. **Next row** (WS) Purl. [Rep Inc row, then work 5 rows even] 2 times—54 (58, 62, 64, 67) sts. **Next row** (RS) Rep Inc row—56 (60, 64, 66, 69) sts. **Next row** (WS) Purl. Cut CC1 and CC2. Join MC. **Next row** (RS)

□ with MC, k on RS, p on WS

• with 2 strands of CC1 and 1 strand of CC2 held tog, k on RS, p on WS

✓ with 2 strands of CC1 and 1 strand of CC2 held tog, k2tog

M with MC, M1

■ no stitch

size 38"

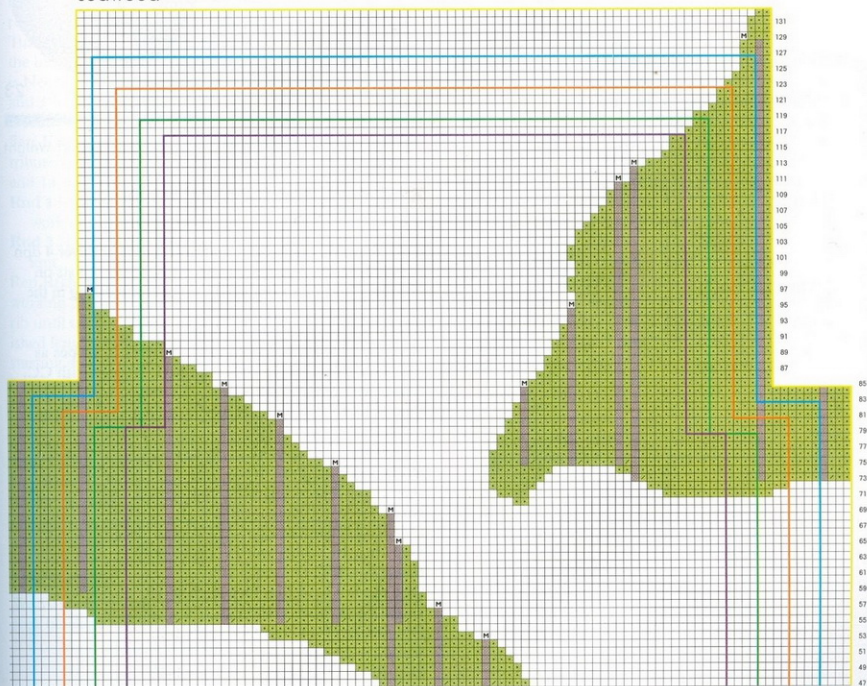
size 42"

size 46"

size 50"

size 54"

seaweed



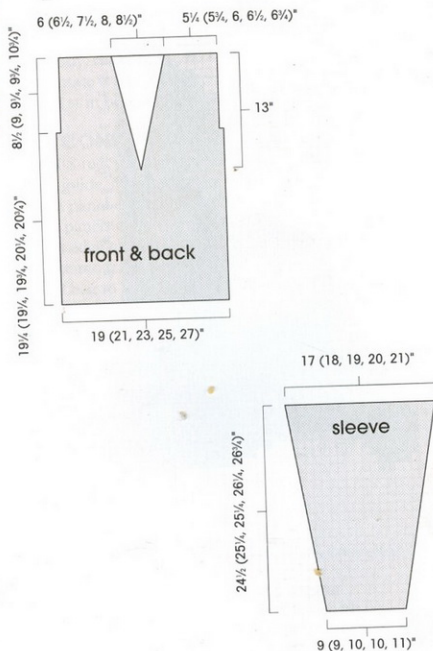
K4 (5, 4, 5, 2), M1, [k7 (7, 8, 8, 8), M1] 7 (7, 7, 7, 8) times, k3 (6, 4, 5, 3)—64 (68, 72, 74, 78) sts. Work 3 rows in St st. [Work (original) Inc row, then work 5 rows even] 1 (1, 1, 2, 2) time(s)—66 (70, 74, 78, 82) sts. **Next row** (RS) Work Inc row—68 (72, 76, 80, 84) sts. Work 7 (7, 7, 1, 1) row(s) in St st. **Next row** (RS) Work in St st and mark the first and last st for armhole seaming. Work 5 (7, 9, 9, 11) rows in St st. BO all sts.

FINISHING

Sew shoulder seams. **Neckband:** With 2 strands of CC1 and 1 strand of CC2 held tog and smallest needle, beg at left shoulder edge with RS facing, pick up and knit 58 sts along left-front neckline, place marker (pm) at V-neck base, pick up and knit 58 sts along right-front neckline, 22 (26, 30, 30, 34) sts along back neck, pm and join for working in the rnd—138 (142, 146, 146, 150) sts total.

Rnd 1 *K2, p2; rep from * to 2 sts before first m, k2, slip marker (sl m), k2, p2, cont in rib to end.

Rnd 2 *K2, p2; rep from * to 2 sts before first m, ssk, sl m, k2tog, work in rib to end.



Rnd 3 *K2, p2; rep from * to 5 sts before first m, k2, p1, ssk, sl m, k2tog, p1, work in rib to end.
Rnd 4 *K2, p2; rep from * to 4 sts before first m, k2, ssk, sl m, k2tog, work in rib to end.
Rnd 5 *K2, p2; rep from * to 3 sts before first m, k1, ssk, sl m, k2tog, k1, p2, work in rib to end.
 BO all sts in patt. Weave in loose ends. Block to measurements. Sew sleeves into armholes, matching m to beg of underarm BO. Sew side and sleeve seams. □

ribby retro socks

chrissey gardiner

●●●●○ page 43

Size 8" foot circumference; 14" long from top of heel flap to cuff edge

Yarn Louet Gems Sport Weight (100% merino; 225 yd (205 m)/100 g):

- #80-2173-2 shamrock (MC), 2 skeins
- #80-2053-9 goldilocks (CC), 1 skein

Gauge 7 sts and 10 rows = 1" in St st in the rnd

Tools

- Size 2 (3 mm): double-pointed needles (dpn)
- Yarn needle



Louet Gems Sport Weight

see glossary for terms you don't know

SOCK

Cuff: With MC, CO 72 sts and distribute them over 4 dpn as foll: 22 sts on Needle 1, 14 sts on Needle 2, 14 sts on Needle 3, and 22 sts on Needle 4. Join for working in the rnd.

Rnd 1 K1, p2, *k2, p2; rep from * to last st, k1.

Work 10 rnds in rib. Cont in rib and work in stripes as foll: 5 rnds with CC, 5 rnds with MC, 10 rnds with CC, 5 rnds with MC, 5 rnds with CC, 1 rnd with MC. **Leg:**

Dec Rnd 1 Cont with MC, work in rib to last 2 sts on Needle 4, ssp.

Dec Rnd 2 P2tog, work in rib to end.

Rnds 3-4 Work even in rib.

Dec Rnds 5-6 Rep Dec Rnds 1-2.

Rnds 7-8 Work even in rib.

Dec Rnd 9 Work in rib to last 2 sts on Needle 4, ssk.

Dec Rnd 10 K2tog, work in rib to end.

Rnds 11-12 Work even in rib.

Dec Rnds 13-14 Rep Dec Rnds 9-10.

Rnds 15-16 Work even in rib.

Dec Rnds 17-18 Rep Dec Rnds 1-2.

Rnds 19-20 Work even in rib.

Dec Rnds 21-22 Rep Dec Rnds 1-2.

Rnds 23–24 Work even in rib.

Dec Rnds 25–26 Rep Dec Rnds 9–10.

Rnds 27–28 Work even in rib.

Dec Rnds 29–30 Rep Dec Rnds 9–10.

There are now 14 sts on each of four needles—56 sts rem.

Work even in rib with MC until leg measures 14" from CO (or desired length to top of heel flap), ending with Needle 3. **Heel flap:** The heel flap will be worked back and forth on 28 sts.

Row 1 (RS) *Sl 1, k1; rep from * across all sts on Needles 3 and 1, working them onto a single needle (heel needle), turn. Heel is worked on these sts only.

Row 2 (WS) Sl 1, purl to end.

Row 3 *Sl 1, k1; rep from * to end.

Rep Rows 2 and 3 thirteen more times, then rep Row 2 once more—14 slipped sts on each side of heel flap. Turn heel:

Row 1 (RS) K16, ssk, k1, turn.

Row 2 (WS) Sl 1, p5, p2tog, p1, turn.

Row 3 Sl 1, knit to last st before gap, ssk, k1, turn.

Row 4 Sl 1, purl to last st before gap, p2tog, p1, turn.

Rep Rows 3 and 4 until all sts have been worked—16 sts rem on heel needle, ending with a WS row. **Gusset:** (RS) Turn and knit across all heel sts. Working up the side of the heel flap, pick up and knit 14 sts along selvedge—this is Needle 1 again. Work instep sections on Needles 2 and 3 in rib as established. Using empty needle (now Needle 4), pick up and knit 14 sts down other side of heel flap. K8 from Needle 1 onto Needle 4. Sts are again distributed over 4 needles with 22 sts on Needles 1 and 4, and 14 sts on Needles 2 and 3.

Rnd 1 Needle 1: knit to last 3 sts, k2tog, k1; Needles 2 and 3: work in rib; Needle 4: k1, ssk, knit to end.

Rnd 2 Needle 1: knit; Needles 2 and 3: work in rib; Needle 4: knit.

Rep Rnds 1–2 seven more times—56 sts rem. **Foot:** Cont working Needles 1 and 4 in St st and Needles 2 and 3 in rib until until foot measures 7", or 2" less than desired finished length, ending with Needle 3. With CC, work 1 rnd, starting with Needle 4 and ending with Needle 3. Change back to MC. **Toe:**

Rnd 1 Needle 4: k1, ssk, knit to end of needle; Needle 1: knit to last 3 sts, k2tog, k1; Needle 2: k1, ssk, knit to end of needle; Needle 3: knit to last 3 sts, k2tog, k1.

Rnd 2 Knit all sts.

Rep Rnds 1–2 seven more times—6 sts rem on each needle. Rep Rnd 1 only 5 times—1 st rem on each needle. Cut yarn, leaving a 6–8" tail. Pull yarn through rem sts and pull tight to close toe. Fasten off.

FINISHING

Weave in ends. Dampen socks and lay flat to block or use sock blockers. □

roundabout vest

katie himmelberg

●●○○ page 44

Sizes 32 (36, 40, 44)" bust

Yarn Schoeller + Stahl Limbo
Color (100% superwash wool; 137 yd (125 m)/50 g)

• #2574 red white and blue,
7 (9, 11, 13) skeins

Yarn distributed by Skacel

Gauge 26 sts and 32 rows = 4"
in St st

Tools

- Size 6 (4 mm): 16", 24", and 32" circular needles; double-pointed needles (dpn)
- 8 markers (m), one in contrasting color
- Yarn needle



24

Schoeller + Stahl Limbo
Color

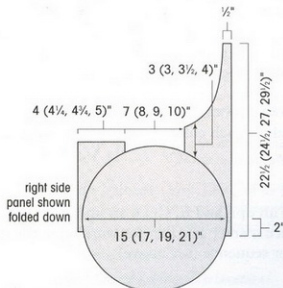
see glossary for terms you don't know

CIRCLE (MAKE 2)

With dpn, CO 8 sts. Distribute sts evenly on 4 dpn. **Next row** Join for working in the rnd and work as foll: *K1, M1, place marker (pm); rep from * around—16 sts, 8 m placed; last m placed is contrasting m. Knit 1 rnd. **Inc rnd** *Knit to m, M1, sl m; rep from * around. Rep last 2 rnds until there are 28 (32, 36, 40) sts between m, changing to circular needles when necessary. Knit 1 rnd. *Rep Inc rnd. Purl 1 rnd. Rep from * 3 more times—32 (36, 40, 44) sts between m. BO all sts loosely.

SIDE PANELS (MAKE 2)

With any circular needle, CO 3 sts. Do not join. **Next row** (WS) Purl. **Next row** (RS) K1, M1, knit to end. Rep last 2 rows 6 more times—10 sts. **Next row** (WS) Purl. **Next row** (RS) Knit. **Next row** Purl. **Next row** K1, M1, knit to end. Rep last 4 rows 15 (17, 19, 21) more times—



26 (28, 30, 32) sts. Work even in St st for 3 (3, 3½, 4)", ending with a WS row. **Next row (RS)** K1, ssk, knit to end. **Next row (WS)** Purl. **Next row** Knit. **Next row** Purl. Rep last 4 rows 15 (17, 19, 21) more times—10 sts. **Next row** K1, ssk, knit to end. **Next row** Purl. Rep last 2 rows 6 more times—3 sts rem. BO all sts.

FINISHING

Fold side panels in half widthwise, matching CO and BO ends. Sew side straight edges tog, adjusting armhole opening to achieve desired fit. Sew shaped sides to body circles, beg about 2" below center of circle (see schematic page 89). Use CO tail to close holes at CO of circles. Weave in loose ends. Block lightly. ☐

cinchy hat

cathy carron
●●○○○ page 45

Sizes 20 (22)" head circumference
Yarn Reynolds Signature (80% acrylic, 20% wool; 220 yd [201 m]/100 g):

- #43 light olive (A), 1 ball
- #66 maroon (B), 1 ball
- #44 dark green (C), 1 ball
- #56 light blue (D), 1 ball
- #68 red (E), 1 ball
- #55 medium blue (F), 1 ball
- #71 mustard (G), 1 ball

Yarn distributed by JCA
Gauge 20 sts and 26 rows = 4" in St st

Tools

- Size 6 (4 mm): double-pointed needles (dpn) and 16" circular needle
- Marker (m)
- Yarn needle
- 1½ yds of ½" wide ribbon



25

Reynolds Signature

see glossary for terms you don't know

Note

You will have enough yarn left over from the hat to make the matching striped scarf.

Hat Color Sequence

Work 6 rnds in each color as foll: E, D, G, B, A, F, C, E, D, A, B, G, C.

HAT

Crown: With dpn and E, CO 6 sts and divide between 3 dpn. Place marker and join for working in the rnd. Work in hat color sequence (see above).

Rnd 1 and all odd rnds Knit.

Rnd 2 *K1, M1; rep from * around—12 sts.

Rnd 4 *K2, M1; rep from * around—18 sts.

Rnd 6 *K3, M1; rep from * around—24 sts.

Cont in this manner, maintaining color sequence, adding 1 knit st before each M1 every other rnd until there are 15 (16) sts between each M1—96 (102) sts total. Knit 1 rnd. Change to circular needle. **Next rnd** K3, yo, k2tog, work to last 4 sts, yo, k2tog, k2. Knit 5 rnds. Rep last 6 rnds 7 more times. **Brim:** With F, knit 1 rnd; purl 1 rnd. Rep last 2 rnds 1 more time. Knit 1 rnd. BO all sts.

FINISHING

Weave in ends. Lace ribbon through eyelets as foll: With RS facing and beg at bottom, weave ribbon in and out, up one side then across and down the other side. Even out ribbon ends, pull taut, and tie in a bow. ☐

stripy scarf

cathy carron
●○○○○ Page 45

Size 11" wide and 60" long
Yarn Reynolds Signature (80% acrylic, 20% wool; 220 yd [201 m]/100 g):

- #43 light olive (A), 1 ball
- #66 maroon (B), 1 ball
- #44 dark green (C), 1 ball
- #56 light blue (D), 1 ball
- #68 red (E), 1 ball
- #55 medium blue (F), 1 ball
- #71 mustard (G), 1 ball

Gauge 20 sts and 26 rows = 4" in St st

Tools

- Size 6 (4 mm): 32" circular needle
- Yarn needle



26

Reynolds Signature

see glossary for terms you don't know

SCARF

With A, CO 300 sts. Cont with A, knit 8 rows. With B, cont as foll:

***Row 1 (RS)** Knit.

Row 2 (WS) Sl 1, k5, purl to last 6 sts, k6.

Rep last 2 rows 3 more times*. With C, rep from * to * once. Work 5 more reps, changing colors on Row 1 in the foll order: D, E, F, G, B. With E, knit 8 rows even. BO all sts.

FINISHING

Weave in ends. Block scarf. ☐

*Swatching is an excellent way to practice and to play! Swatch with different beads, different yarns, different patterns, and the different techniques discussed on **page 26**.*



Beads shown here:

Size 6/0 seed beads with fingering and sportweight yarns, size 4 mm drops with laceweight yarn, and glass pony beads with worsted-weight yarn.

All beads distributed by Helby Beads/The Beadsmith; for wholesale information, visit www.helby.com.