

# KATHMANDU SWEATER



LINKA<sup>TM</sup>  
NEUMANN





The Kathmandu sweater is inspired by the Hippie era in the 60's and 70's. Kathmandu was a popular destination for many hippies in so-called "hippie trails" at this time. The sweater is knitted in the round, from the bottom up, and should have a positive ease of about 10–15 cm.

Happy knitting!





**Yarn and Colours**

Vidde 69321, 69303, 69300, 69301  
Varde 662130



**Yarn and Colours**

Vidde 69314, 69303, 69336, 69335, 69308



**Yarn and Colours**

Luna 421, 427

Vidde 329, 69334, 69301, 69325



**Yarn and Colours**

Luna 421, 427

Vidde 69330, 69302, 69303



**Yarn and Colours**  
Varde 662105, 662134  
Vidde 69300  
Luna 421, 422

Photo: Ylva Støre Myhre (@ylveej)

## Sizes

XS (S) M (L) XL (XXL) XXXL

## Gauge

10 cm on needle 5 mm= 18 stitches

4 in on needle US 8= 18 stitches

## Yarn

Luna, Vidde or/and Varde from  
Hillesvåg yarns

## The amount of yarn you need

(for high neck you need 50 grams more of the main colour)

Main colour: 350 (400) 450 (500) 550 (600) 650 g

Pattern colour 1: 100 (100) 100 (150) 150 (150) 150 g

Pattern colour 2: 50 (50) 50 (50) 100 (100) 100 g

Pattern colour 3: 100 (100) 150 (150) 200 (200) g

Pattern colour 4: 50 (50) 50 (50) 100 (100) 100 g

## Needles

Double pointed needles 3,5 and 5 mm (US 4 and 8)

Circular needle 40 cm (16 in) 3,5 and 5 mm (US 4 and 8)

Circular needle 80 cm (32 in) 3,5 and 5 mm (US 4 and 8)

## Measurements

Sleeves (from underarm to cuff): 47 cm /18,5 in

Around the body of the sweater: 88 (97) 106 (115) 124 (133) 142 cm / 34,6 (38,2) 41,7 (45,3) 48,8 (52,4) 55,9 in

The length of the body: 42 cm/ 16,5 in

## Yarn alternatives

- Lettlopi
- Heavy Merino from Knitting for Olive
- Hamelton 1, Loch Lomond Bio GOTS, Hamelton Tweed 1 from BC yarn
- Charmis Varm
- Vintage Wool and Wild Wool from Erika Knight
- Filcolana Peruvian Highland Wool
- Mondial sublime

## The Body

Cast on 152 (168) 184 (200) 216 (232) 248 stitches in the main colour on circular needle size 3,5 mm /US 4 and join in the round. Knit 5 cm/2 in rib (1 knit stitch, 1 purl stitch. Repeat). Change to circular needle size 5 mm/US 8 (from here you knit stockinette stitches) and increase 8 stitches evenly= 160 (176) 192 (208) 224 (240) 256 stitches. Place a marker at the beginning of the round, and a second marker after 80 (88) 96 (104) 112 (120) 128 stitches = front and back piece. *Knit 3 rounds in the main colour* before you knit chart A. Repeat chart A until the body measures 29 cm/11,4 in (end chart A on round nr 9, 18, 27 or 36). Knit chart B. Chart B measures 13 cm/5,1 in, so if you want a shorter or longer body you have to adjust the length before you start to knit chart B (every flower row in chart A measures 4,5 cm/1,77 in). Put 10 (13) 15 (14) 14 (14) 14 stitches from each side of the body (the marker will be in the middle of these stitches) on stitch holders. Knit the sleeves.

## Sleeves

Cast on 40 (40) 42 (44) 44 (46) 46 stitches with main colour, on double pointed needles size 3,5 mm/US 4, and join in the round. Knit 7 cm/ 2,75 in rib (1 knit stitch, 1 purl stitch. Repeat). Change to needle size 5 mm/ US 8 (from here you knit stockinette stitches) and increase evenly to= 50 (52) 54 (54) 56 (58) 60 stitches. Knit 3 rounds in the main colour before you knit chart A (repeat). Place a marker around the first stitch of the round (under the sleeve) and increase 1 stitch on each side of this stitch every 2 cm / 0,8 in until the total number of stitches is 68 (74) 78 (80) 84 (88) 92 stitches. Remember that new stitches also is a part of the colourwork (the pattern will not end with a full flower under the sleeves). Knit until the sleeve measures 34 cm/13,4 in (end chart A on round nr 9, 18, 27 or 36). Knit chart B. Chart B measures 13 cm/ 5,1 in so if you want a shorter og longer sleeve you have to adjust the length before you start to knit chart B (every flower row in chart A measures 4,5 cm/ 1,77 in). Put 10 (13) 15 (14) 14 (14) 14 stitches (the marker will be in the middle of these stitches) on a stitch holder. Knit one more sleeve in the same way.

## The yoke

Knit the sleeves over to the same needle as the body: sleeve, front piece, sleeve, back piece. Put a marker on the first assembly (this is the beginning of the round). You should now have a total of 256 (272) 288 (312) 336 (360) 384 stitches. Knit chart C and decrease as shown in the chart. Knit the neck.

**Short neck:** Decrease evenly to 88 (90) 92 (94) 98 (100) 104 stitches. Knit 2 cm/ 0,8 in rib (1 knit stitch, 1 purl stitch. Repeat) in main colour on needle 3,5 mm/ US 4. Change to desired contrast colour and knit 1 round with knit stitches before you bind off in pattern.

**High neck:** Decrease evenly to 84 (84) 88 (88) 92 (92) 96 stitches. Knit 20 cm/ 7,9 in rib (2 knit stitches, 2 purl stitches. Repeat) and bind off in pattern.

## Final Assembly

Sew in the loose threads, sew or knit together the holes under the arms. Put the sweater in a cold bath. Let it dry lying down flat on a towel. It is important that the sweater is drying flat to prevent stretching of the sweater.



3	3	3	1	1	3	3	3	3	3	3	1	1	3	3	3	26
3	3	3	1	1	3	3	3	3	3	3	1	1	3	3	3	25
3	1	1	4	4	1	1	3	3	1	1	4	4	1	1	3	24
3	1	1	4	4	1	1	3	3	1	1	4	4	1	1	3	23
3	3	3	1	1	3	3	3	3	3	1	1	3	3	3	3	22
3	3	3	1	1	3	3	3	3	3	1	1	3	3	3	3	21
3	3	3	3	3	3	3	3	3	3	3	3	3	3	3	3	20
3	b		3	b		3	b		3	b		3	b		3	19
3	b		3	b		3	b		3	b		3	b		3	18
3	b		3	b		3	b		3	b		3	b		3	17
b	b	b	b	b	b	b	b	b	b	b	b	b	b	b	b	16
1	b	b	b	b	b	b	b	1	b	b	b	b	b	b	b	15
b	1	b	b	b	b	b	1	1	1	b	b	b	b	b	1	14
1	b	b	1	1	1	b	1	1	1	b	1	1	1	b	b	13
b	b	b	1	1	1	1	b	b	b	1	1	1	1	b	b	12
b	3	b	1	1	1	b	3	3	3	b	1	1	1	b	3	11
3	b	b	b	1	b	3	3	3	3	3	b	1	b	b	b	10
b	b	1	1	b	3	3	3	3	3	3	3	b	1	1	b	9
b	1	1	1	b	3	3	3	3	3	3	3	b	1	1	1	8
b	b	1	1	b	3	3	3	3	3	3	3	b	1	1	b	7
3	b	b	b	1	b	3	3	3	3	3	b	1	b	b	b	6
b	3	b	1	1	1	b	3	3	3	3	b	1	1	1	b	5
b	b	b	1	1	1	1	b	b	b	1	1	1	1	b	b	4
1	b	b	1	1	1	b	1	1	1	b	1	1	1	b	b	3
b	1	b	b	b	b	b	1	1	1	b	b	b	b	b	1	2
1	b	b	b	b	b	b	1	b	b	b	b	b	b	b	b	1
16	15	14	13	12	11	10	9	8	7	6	5	4	3	2	1	



Mid front of the body and sleeves

## Chart B

Chart B measures 13 cm/ 5,1 in so if you want a shorter og longer sleeve, or body, you have to adjust the length before you start to knit chart B (every flower row in chart A measures 4,5 cm/ 1,77 inches.)

b	b	b	b	b	b	b	b	b	b	b	b	b	b	b	b	36
b	b	b	b	b	b	b	b	b	b	b	b	b	b	b	b	35
b	b	b	b	b	b	b	b	b	b	b	b	b	b	b	b	34
1	b	b	b	b	b	b	1	1	b	b	b	b	b	b	1	33
1	b	b	b	b	b	b	1	1	b	b	b	b	b	b	1	32
2	1	1	b	b	1	1	2	2	1	1	b	b	1	1	2	31
2	1	1	b	b	1	1	2	2	1	1	b	b	1	1	2	30
1	b	b	b	b	b	b	1	1	b	b	b	b	b	b	1	29
1	b	b	b	b	b	b	1	1	b	b	b	b	b	b	1	28
b	b	b	b	b	b	b	b	b	b	b	b	b	b	b	b	27
b	b	b	b	b	b	b	b	b	b	b	b	b	b	b	b	26
b	b	b	b	b	b	b	b	b	b	b	b	b	b	b	b	25
b	b	b	4	4	b	b	b	b	b	b	4	4	b	b	b	24
b	b	b	4	4	b	b	b	b	b	b	4	4	b	b	b	23
b	4	4	1	1	4	4	b	b	4	4	1	1	4	4	b	22
b	4	4	1	1	4	4	b	b	4	4	1	1	4	4	b	21
b	b	b	4	4	b	b	b	b	b	b	4	4	b	b	b	20
b	b	b	4	4	b	b	b	b	b	b	4	4	b	b	b	19
b	b	b	b	b	b	b	b	b	b	b	b	b	b	b	b	18
b	b	b	b	b	b	b	b	b	b	b	b	b	b	b	b	17
b	b	b	b	b	b	b	b	b	b	b	b	b	b	b	b	16
2	b	b	b	b	b	b	2	2	b	b	b	b	b	b	2	15
2	b	b	b	b	b	b	2	2	b	b	b	b	b	b	2	14
4	2	2	b	b	2	2	4	4	2	2	b	b	2	2	4	13
4	2	2	b	b	2	2	4	4	2	2	b	b	2	2	4	12
2	b	b	b	b	b	b	2	2	b	b	b	b	b	b	2	11
2	b	b	b	b	b	b	2	2	b	b	b	b	b	b	2	10
b	b	b	b	b	b	b	b	b	b	b	b	b	b	b	b	9
b	b	b	b	b	b	b	b	b	b	b	b	b	b	b	b	8
b	b	b	b	b	b	b	b	b	b	b	b	b	b	b	b	7
b	b	b	3	3	b	b	b	b	b	b	3	3	b	b	b	6
b	b	b	3	3	b	b	b	b	b	b	3	3	b	b	b	5
b	3	3	1	1	3	3	b	b	3	3	1	1	3	3	b	4
b	3	3	1	1	3	3	b	b	3	3	1	1	3	3	b	3
b	b	b	3	3	b	b	b	b	b	b	3	3	b	b	b	2
b	b	b	3	3	b	b	b	b	b	b	3	3	b	b	b	1
16	15	14	13	12	11	10	9	8	7	6	5	4	3	2	1	



Mid front of the body and sleeves

## Chart A

End chart A on round nr 9, 18, 27 or 36.

N.B.; Remember to always check your gauge on stranded knitting. It is common to knit a little tighter with multiple colours so it's possible you have to change your needle size when knitting the charts in order to maintain the knitting gauge of 18 stitches on 10 cm.

# Chart C

VV = knit two stitches together.

V = 1 stitch.

					b	b	b		b	52
					b	b	b		b	51
					3	b	3		b	50
					3	3	3		3	49
					V	3	4	3	V	48
					3	4	2	4	3	47
					1	3	4	3	1	46
					1	1	3	1	1	45
					1	1	3	1	1	44
					3	1	3	1	3	43
					V	V	3	3	3	42
					b	b	b	3	b	41
					1	b	b	3	b	40
					3	1	b	3	V	39
					1	b	b	3	b	38
					b	b	b	3	b	37
					b	b	3	3	3	36
					V	V	3	3	4	35
					b	b	b	3	3	34
					b	b	b	3	b	33
					b	2	b	3	b	32
					b	b	b	3	3	31
					b	b	3	3	1	30
					V	V	b	3	1	29
					b	b	3	1	1	28
					b	b	3	1	3	27
					b	b	3	1	3	26
					b	b	3	1	3	25
					b	b	3	1	3	24
					b	b	3	3	1	23
					b	b	b	3	3	22
					b	b	b	3	3	21
					V	V	b	b	3	20
					b	b	b	b	3	19
					b	b	b	b	3	18
					b	3	b	b	3	17
					3	4	3	b	4	16
					b	3	b	b	3	15
10	7	8	7	6	5	4	3	2	1	

← See under "neck" in the pattern and decrease the given number of stitches.

← Change to needle 3,5 mm/ US 4

← Decrease as shown= 96 (104) 112 (120) 128 (136) 144 stitches

← Skip for size XS (S) M (L) XL

← Decrease as shown= 120 (130) 140 (150) 160 (170) 180 stitches

← Decrease as shown= 144 (156) 168 (180) 192 (204) 216 stitches

← Skip for size XS (S) M (L)

← Decrease as shown= 168 (182) 196 (210) 224 (238) 252 stitches

← Skip for size XS (S) M (L) XL

← Decrease as shown= 192 (208) 224 (240) 256 (272) 288 stitches

← Skip for size XS (S) M (L) XL

← Skip for size XS (S)

← Decrease as shown= 216 (234) 252 (270) 288 (306) 324 stitches

← Skip for size XS (S) M (L) XL



Mid front

b	b	b	b	b	b	b	b	b	14
b	b	b	b	b	b	b	b	b	13
b	b	2	2	b	b	b	b	b	12
b	b	2	2	b	b	b	b	b	11
2	2	4	4	2	2	b	b	b	10
2	2	4	4	2	2	b	b	b	9
b	b	2	2	b	b	b	b	b	8
b	b	2	2	b	b	b	b	b	7
b	b	b	b	b	b	b	b	b	6
b	b	b	b	b	b	b	b	b	5
3	b	3	b	3	b	3	b	3	4
3	b	3	b	3	b	3	b	3	3
3	b	3	b	3	b	3	b	3	2
3	3	3	3	3	3	3	3	3	1
8	7	6	5	4	3	2	1		

← Decrease 16 (12) 8 (12) 16 (20) 24 stitches evenly= 240 (260) 280 (300) 320 (340) 360 stitches

← Skip for size XS (S) M

← Skip for size XS

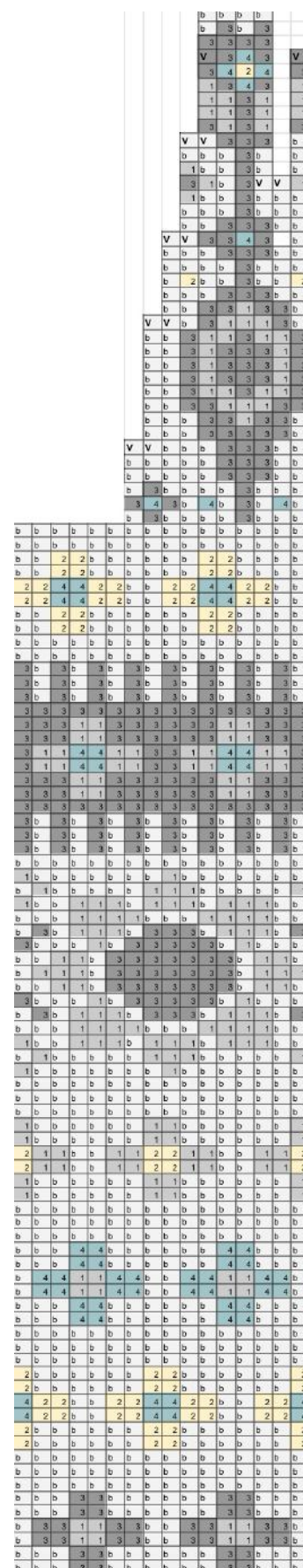
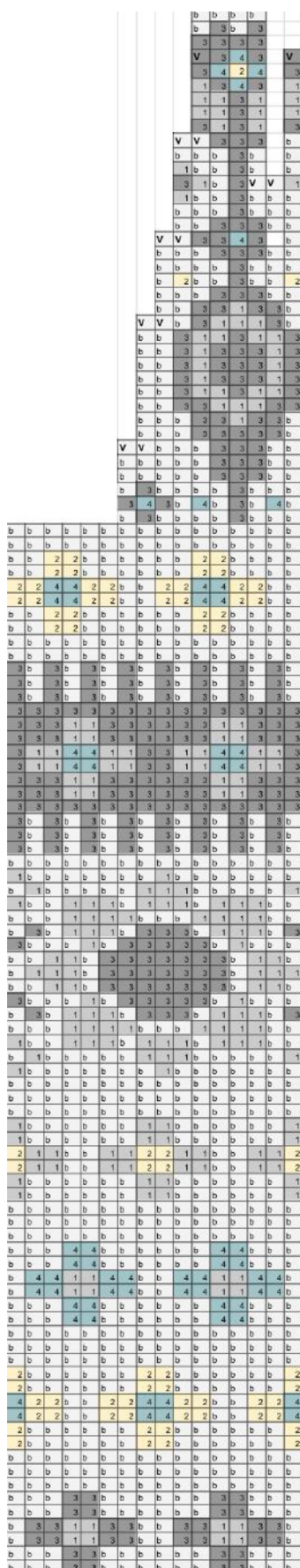
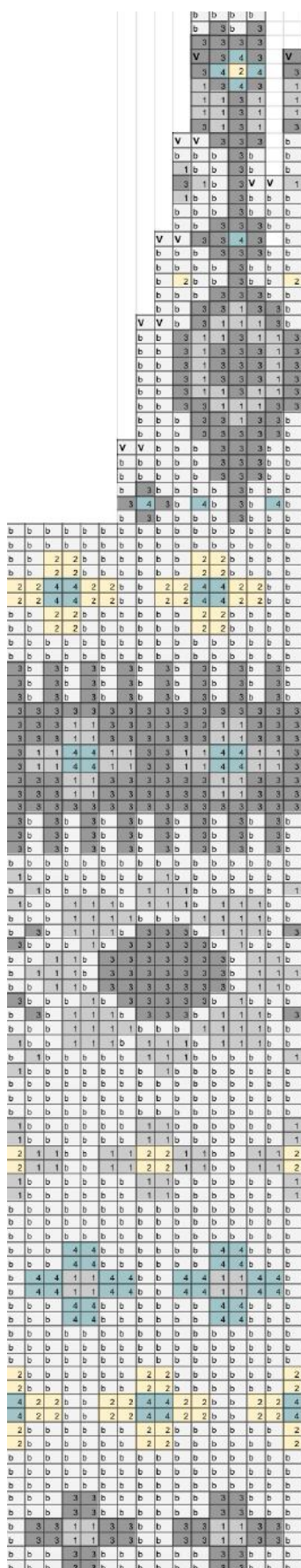
← 256 (272) 288 (312) 336 (360) 384 stitches



Mid front

If you need help with your knitting you can read [this blog post](#) about how to knit the Wilderness Sweater.

Make your own version by colouring the chart





Thank you very much for buying this pattern. Happy knitting! Best regards Linka Neumann.

If you knit for sale as a private person, you have permission to do so when you buy a royalty fee:  
<https://linkaneumann.com/shop/royalty-salg-av-handstrikkede-plagg/>

If you need help on how to knit you sweater you can follow this blogg post on how to knit the Wilderness Sweater:  
<https://linkaneumann.com/hvordan-strikke-villmarksgensereren-for-nybegynnere-d/>

Not to be shared, sold or copied without agreement with Linka Neumann.





