





Exclusive

*Amanda Crawford*

# Katerina Shawl

Stay warm and elegant on chilly summer evenings with this gorgeous shawl in a soft silk blend

THIS BEAUTIFUL WRAP, designed by Amanda Crawford, was inspired by chilly summer nights. “The wrap drapes and envelops you in the soft texture of the beautiful silk blend Manos yarn,” says Amanda. “The colour reminded me of the beach, with its soft beigey pinks and sand tones with just a hint of green.”

The shawl is knitted in two pieces, then grafted together along the centre. It features three lovely lace patterns, blending a chevron edging with a leaf-like design and a more delicate stitch on the main body of the shawl.

“I like working in lace, putting different patterns together, and I think the three

stitches I chose complement each other well and flow easily,” Amanda says.

“The garter stitch chevron edge can be made as long as you want before going into the main pattern. There are two eyelet borders that you could put ribbon through and slightly gather so that the chevrons fall into pleats, if you wanted a different look from your wrap.”

Manos del Uruguay’s Silk Blend, a double-knit weight yarn, which comes from South America, is a delightful mix of silk and extra fine merino. It comes in a range of variegated colours, from the subtle blend used to here to brighter, bolder hues. ►

“THE WRAP DRAPES AND ENVELOPS YOU IN THE SOFT, SILKY TEXTURE OF THE MANOS YARN, AND THE COLOUR IS REMINISCENT OF THE BEACH”





*Amanda Crawford*  
**Katerina Shawl**

## SIZE

Finished measurements  
200cm x 75cm (79in x 29½in)  
(approximate, depending on tension)

## YARN

**Manos del Uruguay** Silk Blend  
(30% silk, 70% superfine merino,  
DK weight, 100g/270m balls)  
5 skeins in shade Virgo (9254)

## NEEDLES

1 pair 5mm (size 6/US 8) knitting needles

## TENSION

16 sts x 28 rows over main lace pattern to  
10cm (4in) using 5mm needles

## ABBREVIATIONS

**tbl:** through back of loops

**Sl1:** slip one

**psso:** pass slip stitch over

**yfwd:** yarn forward

**yrn:** yarn round needle

## Note:

The wrap is made in two pieces and  
then grafted together.

**I** Manos del Uruguay Silk Blend now comes  
in 12 variegated shades as well as 12 solid  
colours. It is a vibrantly coloured yarn, with  
a glossy sheen, that is a delight to use.

Using 5mm needles cast on 127 sts.  
Knit 1 row.

## LACE PATTERN 1

(as shown in Chart A)

**Row 1 (RS):** K1, \*yfwd, K5, P3tog, K5,  
yfwd, K1; rep from \* to end.

**Row 2:** K14, \*P1, K13; rep from \* to last st,  
K1.

Rep last 2 rows 17 more times.

**Row 37 (RS):** K1, \*yfwd, K2tog tbl, yfwd,  
K3, P3tog, K3, yfwd, K2tog, yfwd, K1;  
rep from \* to end.

**Row 38:** K1, P3, \*K7, P7; rep from \* to last  
11 sts, K7, P3, K1.

**Row 39:** K1, \*yfwd, K1, K2tog tbl, yfwd,  
K2, P3tog, K2, yfwd, K2tog, K1, yfwd, K1;  
rep from \* to end.

**Row 40:** K1, P4, \*K5, P9; rep from \* to last  
10 sts, K5, P4, K1.

**Row 41:** K1, \*yfwd, K2, K2tog tbl, yfwd,  
K1, P3tog, K1, yfwd, K2tog, K2, yfwd, K1;  
rep from \* to end.

**Row 42:** K1, P5, \*K3, P11; rep from \* to last  
9 sts, K3, P5, K1.

**Row 43:** K1, \*yfwd, K3, K2tog tbl, yfwd,  
P3tog, yfwd, K2tog, K3, yfwd, K1; rep  
from \* to end.

**Row 44, 46, 48, 50 and 52:** K1, P to last st,  
K1.

**Row 45:** K1, yfwd, K2tog tbl, K1, K2tog,  
yfwd, \*K3, yfwd, K2tog tbl, K7, K2tog,  
yfwd; rep from \* to last 9 sts, K3, yfwd,  
K2tog tbl, K1, K2tog, yfwd, K1.

**Row 47:** K1, yfwd, K2tog tbl, K2tog, yfwd,

\*K5, yfwd, K2tog tbl, K5, K2tog, yfwd;  
rep from \* to last 10 sts, K5, yfwd, K2tog  
tbl, K2tog, yfwd, K1.

**Row 49:** K1, yfwd, K3tog, yfwd, \*K7,  
yfwd, K2tog tbl, K3, K2tog, yfwd; rep  
from \* to last 11 sts, K7, yfwd, K3tog,  
yfwd, K1.

**Row 51:** K1, yfwd, K2tog tbl, \*K9, yfwd,  
K2tog tbl, K1, K2tog, yfwd; rep from \* to  
last 12 sts, K9, K2tog, K1.

**Row 53:** K1, yfwd, K2tog tbl, K5, \*K5,  
yfwd, sl1, K2tog, psso, yfwd, K6; rep from  
\* to last 7 sts, K4, K2tog, yfwd, K1.

**Row 54 (WS):** K1, yfwd, K2tog, K to last  
3 sts, K2tog tbl, yfwd, K1.

## LACE PATTERN 2

(as shown in Chart B)

**Row 1 (RS):** P1, \*yrn, P2tog; rep from \* to  
end.

**Row 2:** K1, yfwd, K2tog, K to last 3 sts,  
K2tog tbl, yfwd, K1.

**Row 3:** K1, yfwd, K2tog tbl, K to last 3 sts,  
K2tog, yfwd, K1.

**Row 4, 6, 8, 10, 12, 14:** K1, P to last st, K1.

**Row 5:** K1, yfwd, K2tog tbl, K3, yfwd,  
K2tog tbl, \*K4, yfwd, K2tog tbl; rep from  
\* to last 5 sts, K2, K2tog, yfwd, K1.

**Row 7:** K1, yfwd, K2tog tbl, K1, \*K2tog,  
yfwd, K1, yfwd, K2tog tbl, K1; rep from  
\* to last 3 sts, K2tog, yfwd, K1.

**Row 9:** K1, yfwd, K2tog tbl, K2tog, yfwd,  
\*K3, yfwd, sl1, K2tog, psso, yfwd; rep  
from \* to last 8 sts, K3, yfwd, K2tog tbl,  
K2tog, yfwd, K1.

**Row 11:** K1, yfwd, K2tog tbl, K2, \*yfwd,

sl1, K2tog, psso, yfwd, K3; rep from to last  
8 sts, yfwd, sl1, K2tog, psso, yfwd, K2,  
K2tog, yfwd, K1.

**Row 13:** As row 5.

**Row 15:** K1, yfwd, K2tog tbl, K to last  
3 sts, K2tog, yfwd, K1.

**Row 16:** K1, yfwd, K2tog, K to last 3 sts,  
K2tog tbl, yfwd, K1.

**Row 17:** As row 1.

**Row 18:** K1, yfwd, K2tog, K to last 3 sts,  
K2tog tbl, yfwd, K1.

## MAIN LACE PATTERN

There is no chart for this section.

(Note: due to increases on row 1 you will  
have more than 127 sts on row 2, but on  
row 3 you will dec back down to 127 sts.)

**Row 1 (RS):** K2, \*yfwd, K3, yfwd, K1;  
rep from \* to last st, K1.

**Row 2:** P.

**Row 3:** \*K3, sl1, K2tog, psso; rep from \* to  
last 3 sts, K3.

**Row 4:** P.

Cont in main lace patt as set until work  
meas 100cm (39in). Leave sts on a spare  
needle and work a second, identical piece.

## MAKING UP

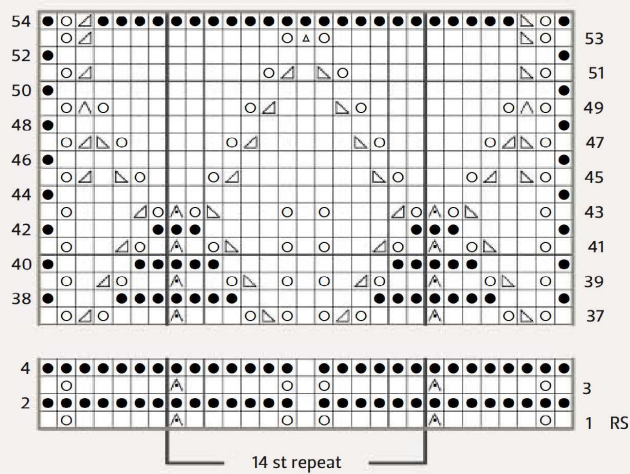
Carefully press your work following  
instructions on the ball band.

With RS facing, graft work together,  
keeping seam flat and even. Alternatively,  
you can cast off the work and sew the  
pieces together using mattress stitch. ☺

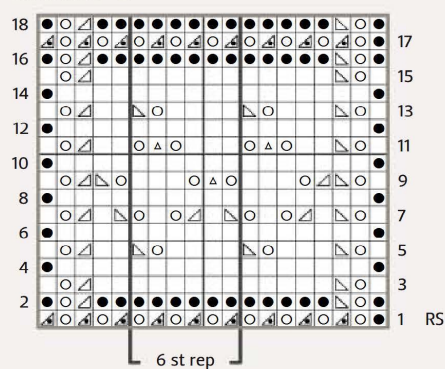


# Katerina Shawl

## CHART A

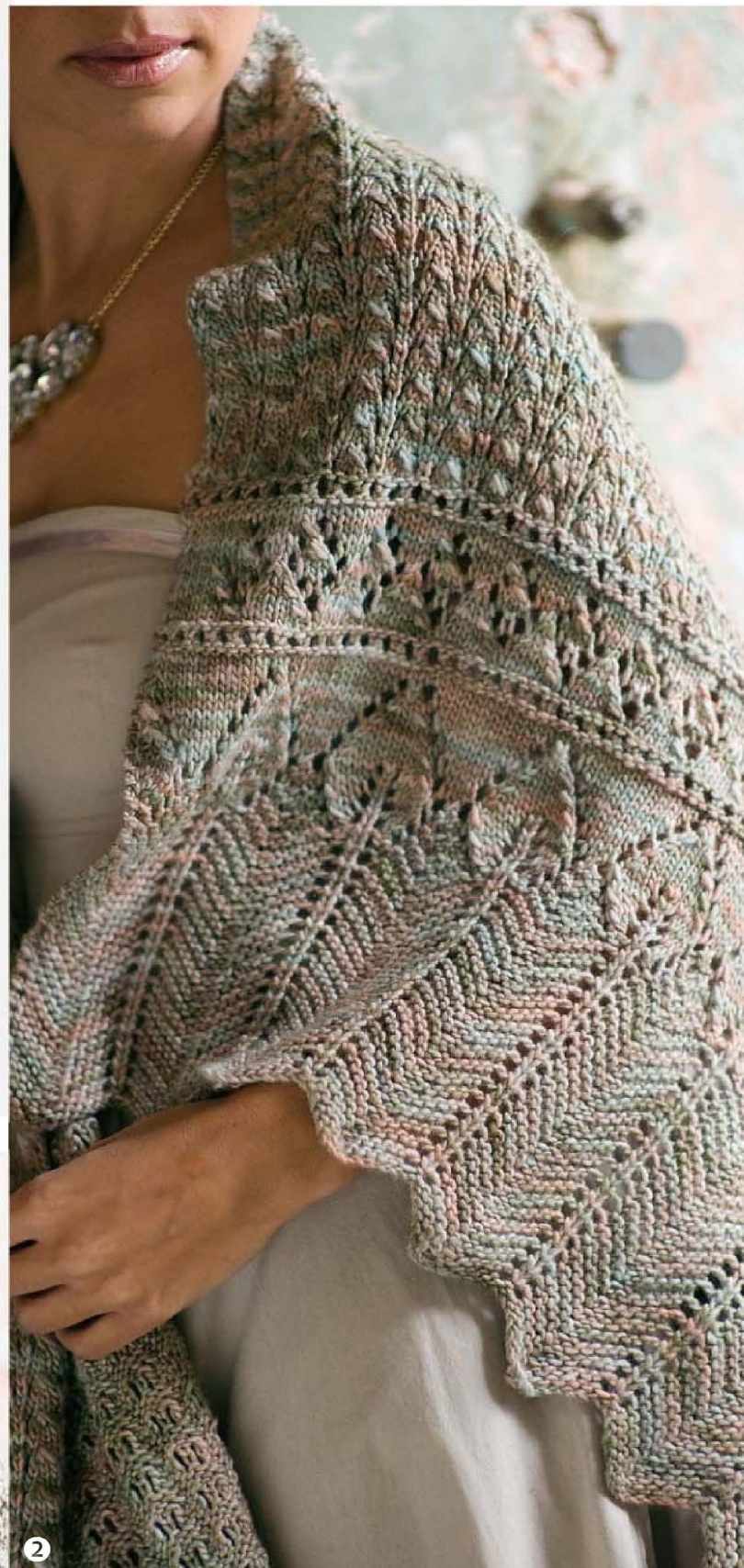


## CHART B



## KEY

□ K RS, P WS	△ P2tog
● P RS, K WS	△ K3tog
○ yfwd, yrn	△ P3tog
△ K2tog	△ Sl1, K2tog, pssso
△ K2tog tbl	



## In detail Describing the techniques

- 1 The main lace panel uses a stitch pattern with increases on row 1 and decreases on row 3. Your stitch count should return to 127 after row 3 each time.
- 2 The garter stitch chevron pattern merges smoothly into the pretty leaf motif.

