

Mirage Herringbone Cowl



Back view



The Mirage Herringbone Cowl blends simplicity with striking visual intrigue. This mosaic-knit cowl is worked side to side, then seamed at the back for a clean finish. Its classic herringbone pattern gets an unexpected twist as the colors reverse at the center, creating a stunning optical illusion. The interplay of light and dark shades draws the eye, giving the illusion of depth and movement.

Perfect for knitters looking for a project that is both meditative and bold, this cowl adds sophistication to any outfit. Choose your favorite contrasting colors to make the mirage come to life!

Size:

- Height: in front approx. 16" / 40 cm and in back 6" / 15 cm
- Circumference: 22" / 55 cm

Yarn: DK weight

Color A: 200 yds / 183 m

Color B: 200 yds / 183 m

Sample shown in:

Lanna Grossa Alta Moda Cashmere 16 fine (10% polyamide, 10% cashmere, 80% virgin wool) 350 yds per 50 g

Color A 042 200 yds

Color B 013 200 yds

**Needles:**

US 6/ 4 mm

Gauge:

26 sts and 45 rows = 4" / 10 cm, in color work after blocking

Notions:

- Stitch markers (optional)
- Blocking tools
- Tapestry needle (for weaving in ends)

Abbreviations

CO	Cast on
sl3wyif	Slip 3 sts purlwise with yarn in front
SSK	Slip knitwise, slip knitwise, knit through the back loop
ST(S)	Stitch(es)
wyib	With yarn in back
wyif	With yarn in front

Instructions

Cowl is worked flat starting in the center of the back and working in increases to create the triangle point, then decreased until you return to the original number of stitches you cast on. The cast on and bind off edges are then seamed to complete the cowl.

Using color A, CO 39 sts using long tail cast on method.

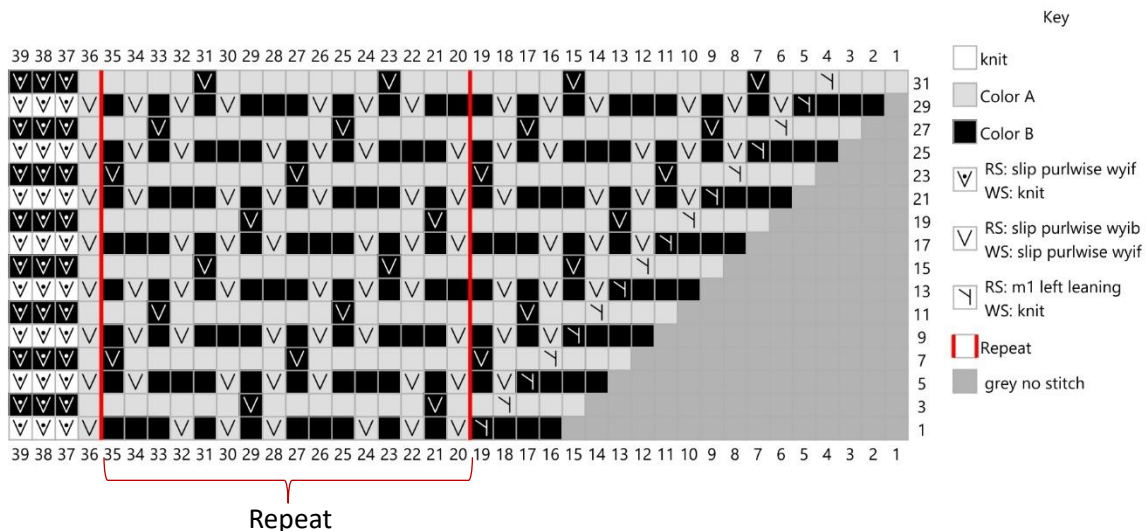
Set up row: Knit to the last 3 stitches, sl3wyif. This is the I-cord edge. Every row begins with knit 3, and ends with sl3wyif. Move to Increase chart.

Increase Chart

Chart shows right side rows only. On wrong side rows, knit the knits and slip the slips with the yarn in front, except for the I-Cord edges.

Each row begins with knit 3 and ends with sl3wyif (right side and wrong side) to create the I-cord edge. You may want to place a marker after the 1st 3 sts and before the last 3 sts.

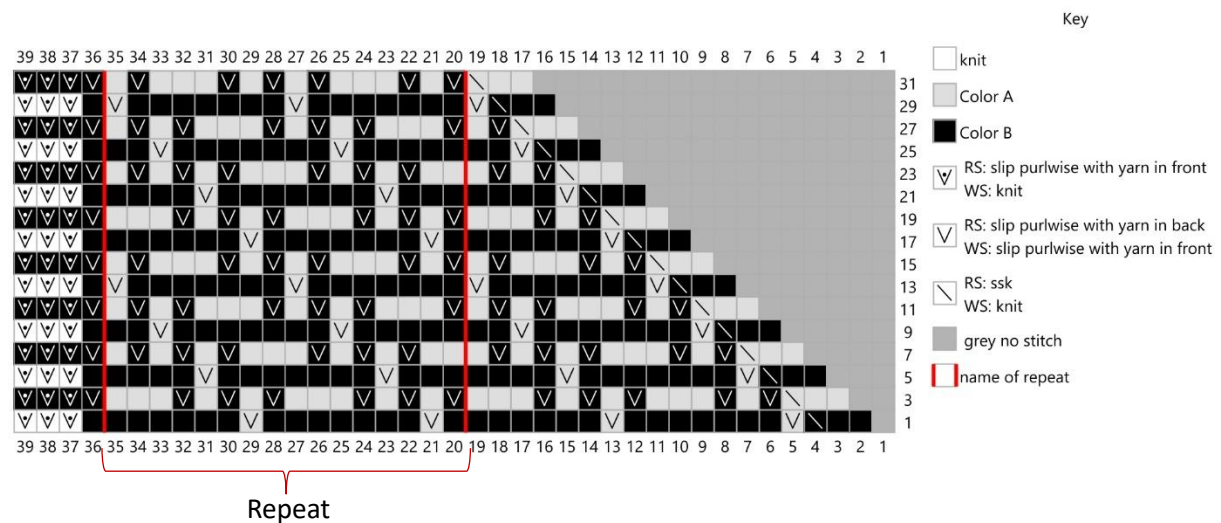
Work chart a total of four times (103 sts). then move to Decrease chart.



Decrease Chart

Note: Once you start the decreases, you will need to remove the first edge marker. Going forward, the 3rd I-Cord st on right side rows becomes part of the ssk (decrease). On the wrong side rows, you will continue to sl3wyif.

Work chart four times, then move to Bind off and Seaming.

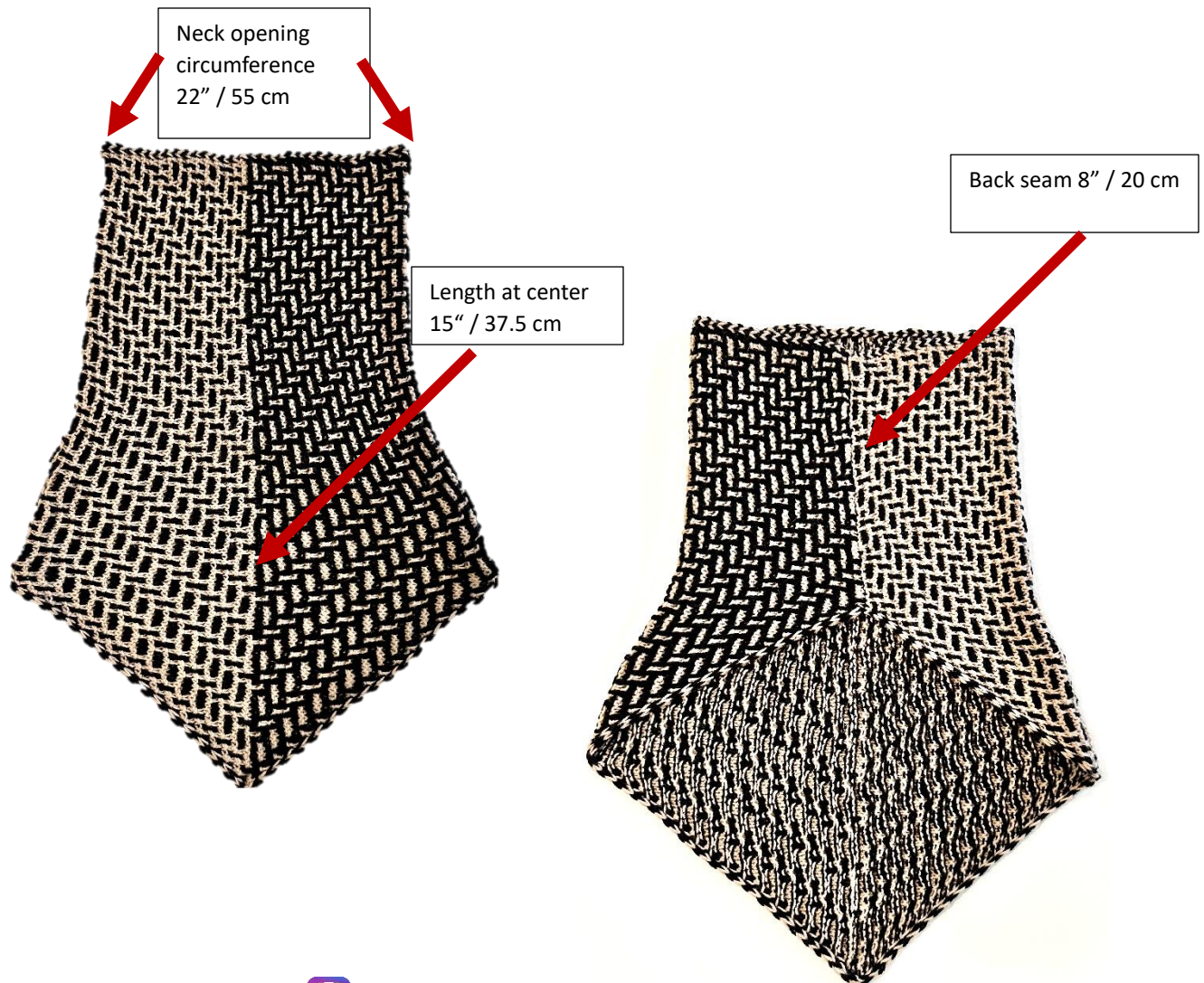


Bind off and Seaming

Cut color A. Using color B, knit 1 row, then bind off as desired. Leave a long enough tail to seam the edges, sew cast on edge and bind off edge together using a whip stitch, cut yarn.

Tip: Be mindful to align the pattern as you sew the edges together to create a seamless looking design.

Weave in all ends and block to measurements and shape pictured below.



Follow [marci_knitdesigner](#) on  to see new releases.