

HALIBUT COWL

BY CAITLIN HUNTER



BOYLAND
KNITWORKS

HALIBUT COWL



MATERIALS

Yarn:

Kelbourne Woolens Scout (100% wool)
274 yds [250 m] – 100 g or other DK weight yarn.

MC: Charcoal Heather

CC: Grey Heather

Needles:

Main: US 6 [4 mm]

Ribbing: US 5 [3.75 mm]

Notions: Stitch Markers

GAUGE

20 sts and 28 rounds = 4" [10 cm] in colorwork and stockinette on main gauge needles.

Note- You should always knit your swatch the same way that the pattern is knit—in this case, in the round. Block your swatch as you will your finished garment and allow it to dry fully before measuring.

Size

Circumference: 25" [63.5 cm]

Height: 9.5" [24 cm]

Yardage: *Please note that yardage is estimated, and can vary between knitters.*

MC : 135 yards [123.5 m]

CC: 85 yards [78 m]

HALIBUT COWL

DIRECTIONS

With the ribbing needles and MC, CO 124 sts using your preferred cast-on method. Sample uses Long Tail Cast-On. Join in the round and PM to indicate BOR, taking care not to twist sts.

Ribbing

Round 1: *K1, p1; repeat from * to BOR.

Repeat Round 1 until work measures 1" [2.5 cm] from cast on edge.

Switch to main gauge needles.

K 1 round.

Chart

Begin working chart as shown on page 3. Work through all rounds of chart. Break CC.

Switch to ribbing needles.

Ribbing

Round 1: *K1, p1; repeat from * to BOR.

Repeat Round 1 until ribbing measures 1" [2.5 cm].

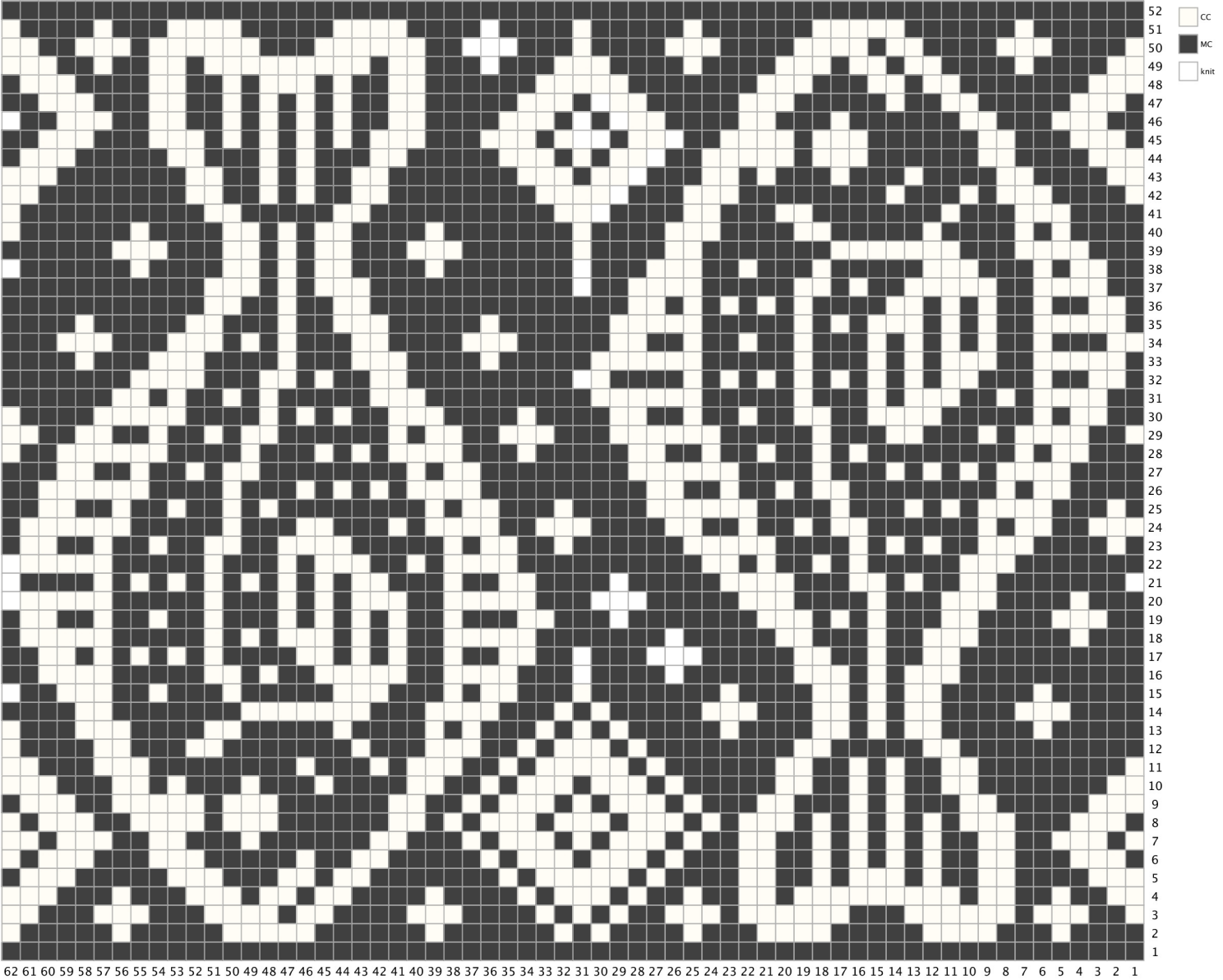
Finishing

Bind off in pattern using a stretchy bind off method, sample uses Jeny's surprisingly stretchy bind off. Weave in ends and block.



HALIBUT COWL

CHART



HALIBUT COWL

ABBREVIATIONS

BOR	beginning of round
CC	Contrast Color
CO	Cast on
K	knit
k2tog	knit 2 together
MC	Main Color
P	purl
ssk	slip, slip, knit
st(s)	stitch(es)

For pattern support, please visit my Ravelry Group, Boyland Knitworks. You can contact the designer at boylandknitworks@gmail.com.

Find more designs by Caitlin Hunter at www.boylandknitworks.com

On Ravelry as: [boylandknitworks](#)

Follow me on Instagram: [boylandknitworks](#)

Share your finished objects and see others on social media with the tags [#boylandknitworks](#) and [#halibutcowl](#)

Thank you for supporting independent design!

