



# GRID GAMBIT

COWL

---

by Samantha Guerin



# GRID GAMBIT

## Construction

Grid Gambit is a cowl worked flat beginning at one corner, shaped with increases and decreases, and seamed after blocking. The cowl features an all-over mosaic pattern, built-in I-Cord edges and an I-Cord bind off.

## Needles

One 24" / 60 cm circular needle or longer, US 7 / 4.5 mm or size needed to get gauge

## Yarn: Sample One (shown on cover)

### Main Color

#### NEWBURGH YARN CO. 'HUDSON DK 4-PLY'

100% Superwash Merino  
(246 yds / 225 m per 100 g)

Shown in colorway *Adirondack Haze*

1 skein

### Contrast Color

#### SPORT TO DK WEIGHT HANDSPUN YARN, FIBER DYED BY HELLO YARN

100% Corriedale  
(200 yds / 183 m per 110 g)

Shown in colorway *All Bark, No Bite*

1 skein

To substitute the Contrast Color yarn used here, I recommend using a sport to DK weight yarn with marling or color transitions to create an effect similar to handspun, or use a similarly colored fingering weight yarn held double.

Alternatively, this could be a perfect project for mini skeins (either sport or DK held singly, or fingering weight held double), using a different color mini for each 12-row section. There are 19 of these sections and there are indications to change contrast color yarn in the "Bandana Body" section of the pattern.

## Yarn: Sample Two (shown on pg 4)

### Main Color

#### PLIES & HELLHOUNDS 'REVIVAL DK'

50% Kent Romney, 37.5% Blue Faced Leicester, 12.5% Brown Leicester  
(268 yds / 245 m per 100 g)

Shown in colorway *Old Growth*

1 skein

## Contrast Color

#### PLIES & HELLHOUNDS 'NECTAR'

60% Superwash Merino, 20% Yak, 20% Silk  
(400 yds / 365 m per 100 g)

\*Held double to achieve gauge

#### Assorted colors of mini skeins

See amounts below

Sample Two used the following amounts of **fingering weight yarn held double**:

**Sections 1-2:** 1 g / 4 yds / 4 m per section

**Section 3:** 2 g / 8 yds / 7.5 m

**Section 4:** 3 g / 12 yds / 11 m

**Sections 5-9:** 4 g / 16 yds / 15 m per section

**Sections 10-11:** 5 g / 20 yds / 18.5 m per section

**Sections 12-18:** 6 g / 24 yds / 22 m per section

**Section 19 & Bind Off:** 7 g / 28 yds / 26 m

If substituting mini skeins with a sport or DK weight yarn, yardage will be half of what is listed above.

## Gauge

19 sts and 25 rows = 4" / 10 cm in Stockinette Stitch, worked flat, unblocked

### Note about Gauge

This pattern uses nearly all of the listed yardage of main color yarn. To conserve your yarn for the cowl, knit a gauge swatch without cutting the yarn and measure the swatch unblocked. When you have gauge, rip back the swatch and cast on.

## Notions

Tapestry needle, blocking materials

## Techniques

Long-tail cast on, slipping stitches, built-in I-Cord, I-Cord bind off, seaming

## Tutorial

#### Mattress stitch

<https://tinyurl.com/mrzup8sk>

## Abbreviations

CC	Contrast color
k	Knit
K2tog	Knit two stitches together; 1 stitch decreased
M1L	<b>Make one left-leaning increase:</b> With left needle, pick up the strand between the stitch you knit and the one you're about to knit, bringing the needle from front to back, then knit into the back of the stitch; 1 stitch increased
M1R	<b>Make one right-leaning increase:</b> With left needle, pick up the strand between the stitch you knit and the one you're about to knit, bringing the needle from back to front, then knit into the front of the stitch; 1 stitch increased
MC	Main color
p	Purl
rep	Repeat
RS	Right side
Sl	Slip stitch, purlwise unless otherwise indicated
st(s)	Stitch(es)
Tbl	Through the back loop of the stitch
WS	Wrong side
Wyib	With yarn in back
Wyif	With yarn in front

## Instructions

With MC yarn and Long-Tail method, cast on 7 sts.

### Set-up Rows, worked in MC yarn

**Row 1 (WS):** K4, sl 3 wyif.

**Row 2 (RS):** K3, MIR, k1, MIL, sl 3 wyif. 9 sts.

**Row 3 (WS):** K3, p3, sl 3 wyif.

### Bandana Body

**Note:** Carry non-working yarn up the I-Cord edge for all charts, bringing the working yarn straight up to begin a new row.

Work Rows 1-60 of Chart A using either charted (pg 9) or written (pg 5) instructions. 69 sts.

If using minis or scraps for CC: Switch to a new CC on Rows 13, 25, 37, and 49, marked with asterisks.

Work Rows 1-50 of Chart B using either charted (pg 10) or written (pgs 5-6) instructions. 94 sts.

If using minis or scraps for CC: Switch to a new CC on Rows 1, 13, 25, 37, and 49, marked with asterisks.

Work Rows 1-56 of Chart C using either charted (pg 11) or written (pgs 6-7) instructions. 122 sts.

If using minis or scraps for CC: Switch to a new CC on Rows 11, 23, 35, and 47, marked with asterisks.

Work Rows 1-62 of Chart D using either charted (pg 12) or written (pgs 7-8) instructions. 91 sts.

If using minis or scraps for CC: Switch to a new CC on Rows 3, 15, 27, 39, and 51, marked with asterisks.

Do not cut either yarn, both will be used for bind off. Proceed to Two Color I-Cord Bind Off.

### Two Color I-Cord Bind Off

\*With MC, k2, k2tog tbl, sl 3 sts back to left needle, using CC, k2, k2tog tbl, sl 3 sts back to left needle, rep from \* to last 3 sts, keeping final 3 sts on the right needle. Pass the first 2 sts over the top of the last st and off the needle. Pull yarn through the remaining loop. Break both yarns.

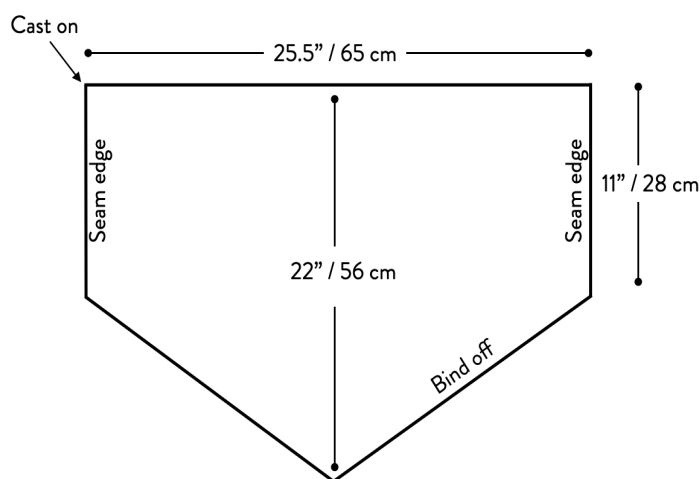
### Finishing

Weave in any ends. Soak in warm water with a few drops of wool wash for about 20 minutes. Carefully squeeze out as much water as possible with your hands. Lay the cowl on a towel and roll them up together. Press on the towel with your hands (or feet!) to squeeze out additional water. Lay the cowl flat to dry and pin out to the dimensions shown in the schematic.

To seam your dry, blocked cowl, line up the two edges labeled “seam edge” in the schematic. Using a length of either MC or CC yarn, seam these edges together with RS facing using the mattress stitch.



## Construction & Schematic



## Chart A Written Instructions

**Row 1 (RS CC):** K1, M1R, k5, M1L, sl 3 wyif. 11 sts.

**Row 2 (WS CC):** K9, p2.

**Row 3 (MC):** K1, M1R, k to last 3 sts, M1L, sl 3 wyif. 2 sts inc.

**Row 4 (MC):** K3, p to end of row.

**Row 5 (CC):** K1, M1R, k9, M1L, sl 3 wyif. 15 sts.

**Row 6 (CC):** K13, p2.

**Rows 7-8 (MC):** Rep Rows 3-4. 17 sts.

**Row 9 (CC):** K1, M1R, k3, sl 1 wyib, k7, sl 1 wyib, k1, M1L, sl 3 wyif. 19 sts.

**Row 10 (CC):** K5, sl 1 wyif, k7, sl 1 wyif, k3, p2.

**Rows 11-12 (MC):** Rep Rows 3-4. 21 sts.

**Row 13 (\*CC):** K1, M1R, k6, (sl 1 wyib, k1) 3 times, sl 1 wyib, k4, M1L, sl 3 wyif. 23 sts.

**Row 14 (CC):** K8, (sl 1 wyif, k1) 3 times, sl 1 wyif, k6, p2.

**Rows 15-16 (MC):** Rep Rows 3-4. 25 sts.

**Row 17 (CC):** K1, M1R, k8, (sl 1 wyib, k1) 3 times, sl 1 wyib, k6, M1L, sl 3 wyif. 27 sts.

**Row 18 (CC):** K10, (sl 1 wyif, k1) 3 times, sl 1 wyif, k8, p2.

**Rows 19-20 (MC):** Rep Rows 3-4. 29 sts.

**Row 21 (CC):** K1, M1R, k2, sl 1 wyib, k7, (sl 1 wyib, k1) 3 times, sl 1 wyib, k7, sl 1 wyib, M1L, sl 3 wyif. 31 sts.

**Row 22 (CC):** K4, sl 1 wyif, k7, (sl 1 wyif, k1) 3 times, sl 1 wyif, k7, sl 1 wyif, k2, p2.

**Rows 23-24 (MC):** Rep Rows 3-4. 33 sts.

**Row 25 (\*CC):** K1, M1R, k5, (sl 1 wyib, k1) 3 times, sl 1 wyib, k7, (sl 1 wyib, k1) 3 times, sl 1 wyib, k3, M1L, sl 3 wyif. 35 sts.

**Row 26 (CC):** K7, (sl 1 wyif, k1) 3 times, sl 1 wyif, k7, (sl 1 wyif, k1) 3 times, sl 1 wyif, k5, p2.

**Rows 27-28 (MC):** Rep Rows 3-4. 37 sts.

**Row 29 (CC):** K1, M1R, k7, (sl 1 wyib, k1) 3 times, sl 1 wyib, k7, (sl 1 wyib, k1) 3 times, sl 1 wyib, k5, M1L, sl 3 wyif. 39 sts.

**Row 30 (CC):** K9, (sl 1 wyif, k1) 3 times, sl 1 wyif, k7, (sl 1 wyif, k1) 3 times, sl 1 wyif, k7, p2.

**Rows 31-32 (MC):** Rep Rows 3-4. 41 sts.

**Row 33 (CC):** K1, M1R, k9, \*(sl 1 wyib, k1) 3 times, sl 1 wyib, k7, rep from \* to last 3 sts, M1L, sl 3 wyif. 43 sts.

**Row 34 (CC):** K11, (sl 1 wyif, k1) 3 times, sl 1 wyif, k7, (sl 1 wyif, k1) 3 times, sl 1 wyif, k9, p2.

**Rows 35-36 (MC):** Rep Rows 3-4. 45 sts.

**Row 37 (\*CC):** K1, M1R, k4, \*(sl 1 wyib, k1) 3 times, sl 1 wyib, k7, rep from \* to last 12 sts, (sl 1 wyib, k1) 3 times, sl 1 wyib, k2, M1L, sl 3 wyif. 47 sts.

**Row 38 (CC):** K6, \*(sl 1 wyif, k1) 3 times, sl 1 wyif, k7, rep from \* to last 13 sts, (sl 1 wyif, k1) 3 times, sl 1 wyif, k4, p2.

**Rows 39-40 (MC):** Rep Rows 3-4. 49 sts.

**Row 41 (CC):** K1, M1R, k6, \*(sl 1 wyib, k1) 3 times, sl 1 wyib, k7, rep from \* to last 14 sts, (sl 1 wyib, k1) 3 times, sl 1 wyib, k4, M1L, sl 3 wyif. 51 sts.

**Row 42 (CC):** K8, \*(sl 1 wyif, k1) 3 times, sl 1 wyif, k7, rep from \* to last 15 sts, (sl 1 wyif, k1) 3 times, sl 1 wyif, k6, p2.

**Rows 43-44 (MC):** Rep Rows 3-4. 53 sts.

**Row 45 (CC):** K1, M1R, k8, \*(sl 1 wyib, k1) 3 times, sl 1 wyib, k7, rep from \* to last 16 sts, (sl 1 wyib, k1) 3 times, sl 1 wyib, k6, M1L, sl 3 wyif. 55 sts.

**Row 46 (CC):** K10, \*(sl 1 wyif, k1) 3 times, sl 1 wyif, k7, rep from \* to last 17 sts, (sl 1 wyif, k1) 3 times, sl 1 wyif, k8, p2.

**Rows 47-48 (MC):** Rep Rows 3-4. 57 sts.

**Row 49 (\*CC):** K1, M1R, k3, \*(sl 1 wyib, k1) 3 times, sl 1 wyib, k7, rep from \* to last 11 sts, (sl 1 wyib, k1) 3 times, sl 1 wyib, k1, M1L, sl 3 wyif. 59 sts.

**Row 50 (CC):** K5, \*(sl 1 wyif, k1) 3 times, sl 1 wyif, k7, rep from \* to last 12 sts, (sl 1 wyif, k1) 3 times, sl 1 wyif, k3, p2.

**Rows 51-52 (MC):** Rep Rows 3-4. 61 sts.

**Row 53 (CC):** K1, M1R, k5, \*(sl 1 wyib, k1) 3 times, sl 1 wyib, k7, rep from \* to last 13 sts, (sl 1 wyib, k1) 3 times, sl 1 wyib, k3, M1L, sl 3 wyif. 63 sts.

**Row 54 (CC):** \*K7, (sl 1 wyif, k1) 3 times, sl 1 wyif, rep from \* to last 7 sts, k5, p2.

**Rows 55-56 (MC):** Rep Rows 3-4. 65 sts.

**Row 57 (CC):** K1, M1R, k7, \*(sl 1 wyib, k1) 3 times, sl 1 wyib, k7, rep from \* to last 15 sts, (sl 1 wyib, k1) 3 times, sl 1 wyib, k5, M1L, sl 3 wyif. 67 sts.

**Row 58 (CC):** K9, \*(sl 1 wyif, k1) 3 times, sl 1 wyif, k7, rep from \* to last 2 sts, p2.

**Rows 59-60 (MC):** Rep Rows 3-4. 69 sts.

## Chart B Written Instructions

**Note:** When repeating rows for Chart B, work the rows mentioned in Chart B.

**Row 1 (\*CC):** K3, \*(sl 1 wyib, k1) 3 times, sl 1 wyib, k7, rep from \* to last 10 sts, (sl 1 wyib, k1) 3 times, sl 1 wyib, M1L, sl 3 wyif. 70 sts.

**Row 2 (CC):** K4, (sl 1 wyif, k1) 3 times, sl 1 wyif, \*k7, (sl 1 wyif, k1) 3 times, sl 1 wyif, rep from \* to last 3 sts, sl 3 wyif.

**Row 3 (MC):** K to last 3 sts, M1L, sl 3 wyif. 1 st inc.

**Row 4 (MC):** K3, p to last 3 sts, sl 3 wyif.

**Row 5 (CC):** K3, \*(sl 1 wyib, k1) 3 times, sl 1 wyib, k7, rep from \* to last 12 sts, (sl 1 wyib, k1) 3 times, sl 1 wyib, k2, M1L, sl 3 wyif. 72 sts.

**Row 6 (CC):** K6, (sl 1 wyif, k1) 3 times, sl 1 wyif, \*k7, (sl 1 wyif, k1) 3 times, sl 1 wyif, rep from \* to last 3 sts, sl 3 wyif.

**Rows 7-8 (MC):** Rep Rows 3-4. 73 sts.

**Row 9 (CC):** K3, \*(sl 1 wyib, k1) 3 times, sl 1 wyib, k7, rep from \* to last 14 sts, (sl 1 wyib, k1) 3 times, sl 1 wyib, k4, M1L, sl 3 wyif. 74 sts.

**Row 10 (CC):** K8, (sl 1 wyif, k1) 3 times, sl 1 wyif, \*k7, (sl 1 wyif, k1) 3 times, sl 1 wyif, rep from \* to last 3 sts, sl 3 wyif.

**Rows 11-12 (MC):** Rep Rows 3-4. 75 sts.

**Row 13 (\*CC):** K3, \*k7, (sl 1 wyib, k1) 3 times, sl 1 wyib, rep from \* to last 16 sts, k7, (sl 1 wyib, k1) 3 times, M1L, sl 3 wyif. 76 sts.

**Row 14 (CC):** K5, (sl 1 wyif, k1) 2 times, sl 1 wyif, k7, \*(sl 1 wyif, k1) 3 times, sl 1 wyif, k7, rep from \* to last 3 sts, sl 3 wyif.

**Rows 15-16 (MC):** Rep Rows 3-4. 77 sts.

**Row 17 (CC):** K3, \*k7, (sl 1 wyib, k1) 3 times, sl 1 wyib, rep from \* to last 4 sts, k1, M1L, sl 3 wyif. 78 sts.

**Row 18 (CC):** K5, \*(sl 1 wyif, k1) 3 times, sl 1 wyif, k7, rep from \* to last 3 sts, sl 3 wyif.

**Rows 19-20 (MC):** Rep Rows 3-4. 79 sts.

**Row 21 (CC):** K3, \*k7, (sl 1 wyib, k1) 3 times, sl 1 wyib, rep from \* to last 6 sts, k3, M1L, sl 3 wyif. 80 sts.

**Row 22 (CC):** K7, \*(sl 1 wyif, k1) 3 times, sl 1 wyif, k7, rep from \* to last 3 sts, sl 3 wyif.

**Rows 23-24 (MC):** Rep Rows 3-4. 81 sts.

**Row 25 (\*CC):** K3, \*(sl 1 wyib, k1) 3 times, sl 1 wyib, k7, rep from \* to last 8 sts, (sl 1 wyib, k1) 2 times, sl 1 wyib, M1L, sl 3 wyif. 82 sts

**Row 26 (CC):** K4, (sl 1 wyif, k1) 2 times, sl 1 wyif, \*k7, (sl 1 wyif, k1) 3 times, sl 1 wyif, rep from \* to last 3 sts, sl 3 wyif.

**Rows 27-28 (MC):** Rep Rows 3-4. 83 sts.

**Row 29 (CC):** K3, \*(sl 1 wyib, k1) 3 times, sl 1 wyib, k7, rep from \* to last 10 sts, (sl 1 wyib, k1) 3 times, sl 1 wyib, M1L, sl 3 wyif. 84 sts.

**Row 30 (CC):** K4, (sl 1 wyif, k1) 3 times, sl 1 wyif, \*k7, (sl 1 wyif, k1) 3 times, sl 1 wyif, rep from \* to last 3 sts, sl 3 wyif.

**Rows 31-32 (MC):** Rep Rows 3-4. 85 sts.

**Row 33 (CC):** K3, \*(sl 1 wyib, k1) 3 times, sl 1 wyib, k7, rep from \* to last 12 sts, (sl 1 wyib, k1) 3 times, sl 1 wyib, k2, M1L, sl 3 wyif. 86 sts.

**Row 34 (CC):** K6, (sl 1 wyif, k1) 3 times, sl 1 wyif, \*k7, (sl 1 wyif, k1) 3 times, sl 1 wyif, rep from \* to last 3 sts, sl 3 wyif.

**Rows 35-36 (MC):** Rep Rows 3-4. 87 sts.

**Row 37 (\*CC):** K3, \*k7, (sl 1 wyib, k1) 3 times, sl 1 wyib, rep from \* to last 14 sts, k7, (sl 1 wyib, k1) 2 times, M1L, sl 3 wyif. 88 sts.

**Row 38 (CC):** K5, sl 1 wyif, k1, sl 1 wyif, k7, \*(sl 1 wyif, k1) 3 times, sl 1 wyif, k7, rep from \* to last 3 sts, sl 3 wyif.

**Rows 39-40 (MC):** Rep Rows 3-4. 89 sts.

**Row 41 (CC):** K3, \*k7, (sl 1 wyib, k1) 3 times, sl 1 wyib, rep from \* to last 16 sts, k7, (sl 1 wyib, k1) 2 times, sl 1 wyib, k1,

M1L, sl 3 wyif. 90 sts.

**Row 42 (CC):** K5, (sl 1 wyif, k1) 2 times, sl 1 wyif, k7, \*(sl 1 wyif, k1) 3 times, sl 1 wyif, k7, rep from \* to last 3 sts, sl 3 wyif.

**Rows 43-44 (MC):** Rep Rows 3-4. 91 sts.

**Row 45 (CC):** K3, \*k7, (sl 1 wyib, k1) 3 times, sl 1 wyib, rep from \* to last 4 sts, k1, M1L, sl 3 wyif. 92 sts.

**Row 46 (CC):** K5, \*(sl 1 wyif, k1) 3 times, sl 1 wyif, k7, rep from \* to last 3 sts, sl 3 wyif.

**Rows 47-48 (MC):** Rep Rows 3-4. 93 sts.

**Row 49 (\*CC):** K3, \*(sl 1 wyib, k1) 3 times, sl 1 wyib, k7, rep from \* to last 6 sts, sl 1 wyib, k1, sl 1 wyib, M1L, sl 3 wyif. 94 sts.

**Row 50 (CC):** K4, sl 1 wyif, k1, sl 1 wyif, \*k7, (sl 1 wyif, k1) 3 times, sl 1 wyif, rep from \* to last 3 sts, sl 3 wyif.

## Chart C Written Instructions

**Note:** When repeating rows for Chart C, work the rows mentioned in Chart C.

**Row 1 (MC):** K to last 3 sts, M1L, sl 3 wyif. 1 st inc.

**Row 2 (MC):** K3, p to last 3 sts, sl 3 wyif.

**Row 3 (CC):** K3, \*(sl 1 wyib, k1) 3 times, sl 1 wyib, k7, rep from \* to last 8 sts, (sl 1 wyib, k1) 2 times, sl 1 wyib, M1L, sl 3 wyif. 96 sts.

**Row 4 (CC):** K4, (sl 1 wyif, k1) 2 times, sl 1 wyif, \*k7, (sl 1 wyif, k1) 3 times, sl 1 wyif, rep from \* to last 3 sts, sl 3 wyif.

**Rows 5-6 (MC):** Rep Rows 1-2. 97 sts.

**Row 7 (CC):** K3, \*(sl 1 wyib, k1) 3 times, sl 1 wyib, k7, rep from \* to last 10 sts, (sl 1 wyib, k1) 3 times, sl 1 wyib, M1L, sl 3 wyif. 98 sts.

**Row 8 (CC):** K4, (sl 1 wyif, k1) 3 times, sl 1 wyif, \*k7, (sl 1 wyif, k1) 3 times, sl 1 wyif, rep from \* to last 3 sts, sl 3 wyif.

**Rows 9-10 (MC):** Rep Rows 1-2. 99 sts.

**Row 11 (\*CC):** K3, \*k7, (sl 1 wyib, k1) 3 times, sl 1 wyib, rep from \* to last 12 sts, k7, sl 1 wyib, k1, M1L, sl 3 wyif. 100 sts.

**Row 12 (CC):** K5, sl 1 wyif, k7, \*(sl 1 wyif, k1) 3 times, sl 1 wyif, k7, rep from \* to last 3 sts, sl 3 wyif.

**Rows 13-14 (MC):** Rep Rows 1-2. 101 sts.

**Row 15 (CC):** K3, \*k7, (sl 1 wyib, k1) 3 times, sl 1 wyib, rep from \* to last 14 sts, k7, (sl 1 wyib, k1) 2 times, M1L, sl 3 wyif. 102 sts.

**Row 16 (CC):** K5, sl 1 wyif, k1, sl 1 wyif, k7, \*(sl 1 wyif, k1) 3 times, sl 1 wyif, k7, rep from \* to last 3 sts, sl 3 wyif.

**Rows 17-18 (MC):** Rep Rows 1-2. 103 sts.

**Row 19 (CC):** K3, \*k7, (sl 1 wyib, k1) 3 times, sl 1 wyib, rep from \* to last 16 sts, k7, (sl 1 wyib, k1) 3 times, M1L, sl 3 wyif. 104 sts.



**Row 20 (CC):** K5, (sl 1 wyif, k1) 2 times, sl 1 wyif, k7, \*(sl 1 wyif, k1) 3 times, sl 1 wyif, k7, rep from \* to last 3 sts, sl 3 wyif.

**Rows 21-22 (MC):** Rep Rows 1-2. 105 sts.

**Row 23 (\*CC):** K3, \*(sl 1 wyib, k1) 3 times, sl 1 wyib, k7, rep from \* to last 4 sts, sl 1 wyib, M1L, sl 3 wyif. 106 sts.

**Row 24 (CC):** K4, sl 1 wyif, \*k7, (sl 1 wyif, k1) 3 times, sl 1 wyif, rep from \* to last 3 sts, sl 3 wyif.

**Rows 25-26 (MC):** Rep Rows 1-2. 107 sts.

**Row 27 (CC):** K3, \*(sl 1 wyib, k1) 3 times, sl 1 wyib, k7, rep from \* to last 6 sts, sl 1 wyib, k1, sl 1 wyib, M1L, sl 3 wyif. 108 sts.

**Row 28 (CC):** K4, sl 1 wyif, k1, sl 1 wyif, \*k7, (sl 1 wyif, k1) 3 times, sl 1 wyif, rep from \* to last 3 sts, sl 3 wyif.

**Rows 29-30 (MC):** Rep Rows 1-2. 109 sts.

**Row 31 (CC):** K3, \*(sl 1 wyib, k1) 3 times, sl 1 wyib, k7, rep from \* to last 8 sts, (sl 1 wyib, k1) 2 times, sl 1 wyib, M1L, sl 3 wyif. 110 sts.

**Row 32 (CC):** K4, (sl 1 wyif, k1) 2 times, sl 1 wyif, \*k7, (sl 1 wyif, k1) 3 times, sl 1 wyif, rep from \* to last 3 sts, sl 3 wyif.

**Rows 33-34 (MC):** Rep Rows 1-2. 111 sts.

**Row 35 (\*CC):** K3, \*k7, (sl 1 wyib, k1) 3 times, sl 1 wyib, rep from \* to last 10 sts, k7, M1L, sl 3 wyif. 112 sts.

**Row 36 (CC):** K11, \*(sl 1 wyif, k1) 3 times, sl 1 wyif, k7, rep from \* to last 3 sts, sl 3 wyif.

**Rows 37-38 (MC):** Rep Rows 1-2. 113 sts.

**Row 39 (CC):** K3, \*k7, (sl 1 wyib, k1) 3 times, sl 1 wyib, rep from \* to last 12 sts, k7, sl 1 wyib, k1, M1L, sl 3 wyif. 114 sts.

**Row 40 (CC):** K5, sl 1 wyif, k7, \*(sl 1 wyif, k1) 3 times, sl 1 wyif, k7, rep from \* to last 3 sts, sl 3 wyif.

**Rows 41-42 (MC):** Rep Rows 1-2. 115 sts.

**Row 43 (CC):** K3, \*k7, (sl 1 wyib, k1) 3 times, sl 1 wyib, rep from \* to last 14 sts, k7, (sl 1 wyib, k1) 2 times, M1L, sl 3 wyif. 116 sts.

**Row 44 (CC):** K5, sl 1 wyif, k1, sl 1 wyif, k7, \*(sl 1 wyif, k1) 3 times, sl 1 wyif, k7, rep from \* to last 3 sts, sl 3 wyif.

**Rows 45-46 (MC):** Rep Rows 1-2. 117 sts.

**Row 47 (\*CC):** K3, \*(sl 1 wyib, k1) 3 times, sl 1 wyib, k7, rep from \* to last 16 sts, (sl 1 wyib, k1) 3 times, sl 1 wyib, k6, M1L, sl 3 wyif. 118 sts.

**Row 48 (CC):** K3, \*k7, (sl 1 wyif, k1) 3 times, sl 1 wyif, rep from \* to last 3 sts, sl 3 wyif.

**Rows 49-50 (MC):** Rep Rows 1-2. 119 sts.

**Row 51 (CC):** K3, \*(sl 1 wyib, k1) 3 times, sl 1 wyib, k7, rep from \* to last 4 sts, sl 1 wyib, M1L, sl 3 wyif. 120 sts.

**Row 52 (CC):** K4, sl 1 wyif, \*k7, (sl 1 wyif, k1) 3 times, sl 1 wyif, rep from \* to last 3 sts, sl 3 wyif.

**Rows 53-54 (MC):** Rep Rows 1-2. 121 sts.

**Row 55 (CC):** K3, \*(sl 1 wyib, k1) 3 times, sl 1 wyib, k7, rep from \* to last 6 sts, sl 1 wyib, k1, sl 1 wyib, M1L, sl 3 wyif. 122 sts.

**Row 56 (CC):** K4, sl 1 wyif, k1, sl 1 wyif, \*k7, (sl 1 wyif, k1) 3 times, sl 1 wyif, rep from \* to last 3 sts, sl 3 wyif.

## Chart D Written Instructions

**Note:** When repeating rows for Chart D, work the rows mentioned in Chart D.

**Row 1 (MC):** K to last 3 sts, k2tog, k1. 1 st dec.

**Row 2 (MC):** P to last 3 sts, sl 3 wyif.

**Row 3 (\*CC):** K3, \*k7, (sl 1 wyib, k1) 3 times, sl 1 wyib, rep from \* to last 6 sts, k3, k2tog, k1. 120 sts.

**Row 4 (CC):** P2, k3, \*(sl 1 wyif, k1) 3 times, sl 1 wyif, k7, rep from \* to last 3 sts, sl 3 wyif.

**Rows 5-6 (MC):** Rep Rows 1-2. 119 sts.

**Row 7 (CC):** K3, \*k7, (sl 1 wyib, k1) 3 times, sl 1 wyib, rep from \* to last 4 sts, k1, k2tog, k1. 118 sts.

**Row 8 (CC):** P2, k1, \*(sl 1 wyif, k1) 3 times, sl 1 wyif, k7, rep from \* to last 3 sts, sl 3 wyif.

**Rows 9-10 (MC):** Rep Rows 1-2. 117 sts.

**Row 11 (CC):** K3, \*k7, (sl 1 wyib, k1) 3 times, sl 1 wyib, rep from \* to last 16 sts, k7, (sl 1 wyib, k1) 3 times, k2tog, k1. 116 sts.

**Row 12 (CC):** P2, k1, (sl 1 wyif, k1) 2 times, sl 1 wyif, k7, \*(sl 1 wyif, k1) 3 times, sl 1 wyif, k7, rep from \* to last 3 sts, sl 3 wyif.

**Rows 13-14 (MC):** Rep Rows 1-2. 115 sts.

**Row 15 (\*CC):** K3, \*(sl 1 wyib, k1) 3 times, sl 1 wyib, k7, rep from \* to last 14 sts, (sl 1 wyib, k1) 3 times, sl 1 wyib, k4, k2tog, k1. 114 sts.

**Row 16 (CC):** P2, k4, (sl 1 wyif, k1) 3 times, sl 1 wyif, \*k7, (sl 1 wyif, k1) 3 times, sl 1 wyif, rep from \* to last 3 sts, sl 3 wyif.

**Rows 17-18 (MC):** Rep Rows 1-2. 113 sts.

**Row 19 (CC):** K3, \*(sl 1 wyib, k1) 3 times, sl 1 wyib, k7, rep from \* to last 12 sts, (sl 1 wyib, k1) 3 times, sl 1 wyib, k2, k2tog, k1. 112 sts.

**Row 20 (CC):** P2, k2, (sl 1 wyif, k1) 3 times, sl 1 wyif, \*k7, (sl 1 wyif, k1) 3 times, sl 1 wyif, rep from \* to last 3 sts, sl 3 wyif.

**Rows 21-22 (MC):** Rep Rows 1-2. 111 sts.

**Row 23 (CC):** K3, \*(sl 1 wyib, k1) 3 times, sl 1 wyib, k7, rep from \* to last 10 sts, (sl 1 wyib, k1) 3 times, sl 1 wyib, k2tog, k1. 110 sts.

**Row 24 (CC):** P2, (sl 1 wyif, k1) 3 times, sl 1 wyif, \*k7, (sl 1 wyif, k1) 3 times, sl 1 wyif, rep from \* to last 3 sts, sl 3 wyif.



**Rows 25-26 (MC):** Rep Rows 1-2. 109 sts.

**Row 27 (\*CC):** K3, \*k7, (sl 1 wyib, k1) 3 times, sl 1 wyib, rep from \* to last 8 sts, k5, k2tog, k1. 108 sts.

**Row 28 (CC):** P2, k5, \*(sl 1 wyif, k1) 3 times, sl 1 wyif, k7, rep from \* to last 3 sts, sl 3 wyif.

**Rows 29-30 (MC):** Rep Rows 1-2. 107 sts.

**Row 31 (CC):** K3, \*k7, (sl 1 wyib, k1) 3 times, sl 1 wyib, rep from \* to last 6 sts, k3, k2tog, k1. 106 sts.

**Row 32 (CC):** P2, k3, \*(sl 1 wyif, k1) 3 times, sl 1 wyif, k7, rep from \* to last 3 sts, sl 3 wyif.

**Rows 33-34 (MC):** Rep Rows 1-2. 105 sts.

**Row 35 (CC):** K3, \*k7, (sl 1 wyib, k1) 3 times, sl 1 wyib, rep from \* to last 4 sts, k1, k2tog, k1. 104 sts.

**Row 36 (CC):** P2, k1, \*(sl 1 wyif, k1) 3 times, sl 1 wyif, k7, rep from \* to last 3 sts, sl 3 wyif.

**Rows 37-38 (MC):** Rep Rows 1-2. 103 sts.

**Row 39 (\*CC):** K3, \*(sl 1 wyib, k1) 3 times, sl 1 wyib, k7, rep from \* to last 16 sts, (sl 1 wyib, k1) 3 times, sl 1 wyib, k6, k2tog, k1. 102 sts.

**Row 40 (CC):** P2, k6, (sl 1 wyif, k1) 3 times, sl 1 wyif, \*k7, (sl 1 wyif, k1) 3 times, sl 1 wyif, rep from \* to last 3 sts, sl 3 wyif.

**Rows 41-42 (MC):** Rep Rows 1-2. 101 sts.

**Row 43 (CC):** K3, \*(sl 1 wyib, k1) 3 times, sl 1 wyib, k7, rep from \* to last 14 sts, (sl 1 wyib, k1) 3 times, sl 1 wyib, k4, k2tog, k1. 100 sts.

**Row 44 (CC):** P2, k4, (sl 1 wyif, k1) 3 times, sl 1 wyif, \*k7, (sl 1 wyif, k1) 3 times, sl 1 wyif, rep from \* to last 3 sts, sl 3 wyif.

**Rows 45-46 (MC):** Rep Rows 1-2. 99 sts.

**Row 47 (CC):** K3, \*(sl 1 wyib, k1) 3 times, sl 1 wyib, k7, rep from \* to last 12 sts, (sl 1 wyib, k1) 3 times, sl 1 wyib, k2, k2tog, k1. 98 sts.

**Row 48 (CC):** P2, k2, (sl 1 wyif, k1) 3 times, sl 1 wyif, \*k7, (sl 1 wyif, k1) 3 times, sl 1 wyif, rep from \* to last 3 sts, sl 3 wyif.

**Rows 49-50 (MC):** Rep Rows 1-2. 97 sts.

**Row 51 (\*CC):** K3, \*k7, (sl 1 wyib, k1) 3 times, sl 1 wyib, rep from \* to last 10 sts, k7, k2tog, k1. 96 sts.

**Row 52 (CC):** P2, k7, \*(sl 1 wyif, k1) 3 times, sl 1 wyif, k7, rep from \* to last 3 sts, sl 3 wyif.

**Rows 53-54 (MC):** Rep Rows 1-2. 95 sts.

**Row 55 (CC):** K3, \*k7, (sl 1 wyib, k1) 3 times, sl 1 wyib, rep from \* to last 8 sts, k5, k2tog, k1. 94 sts.

**Row 56 (CC):** P2, k5, \*(sl 1 wyif, k1) 3 times, sl 1 wyif, k7, rep from \* to last 3 sts, sl 3 wyif.

**Rows 57-58 (MC):** Rep Rows 1-2. 93 sts.

**Row 59 (CC):** K3, \*k7, (sl 1 wyib, k1) 3 times, sl 1 wyib, rep from \* to last 6 sts, k3, k2tog, k1. 92 sts.

**Row 60 (CC):** P2, k3, \*(sl 1 wyif, k1) 3 times, sl 1 wyif, k7, rep from \* to last 3 sts, sl 3 wyif.

**Rows 61-62 (MC):** Rep Rows 1-2. 91 sts.

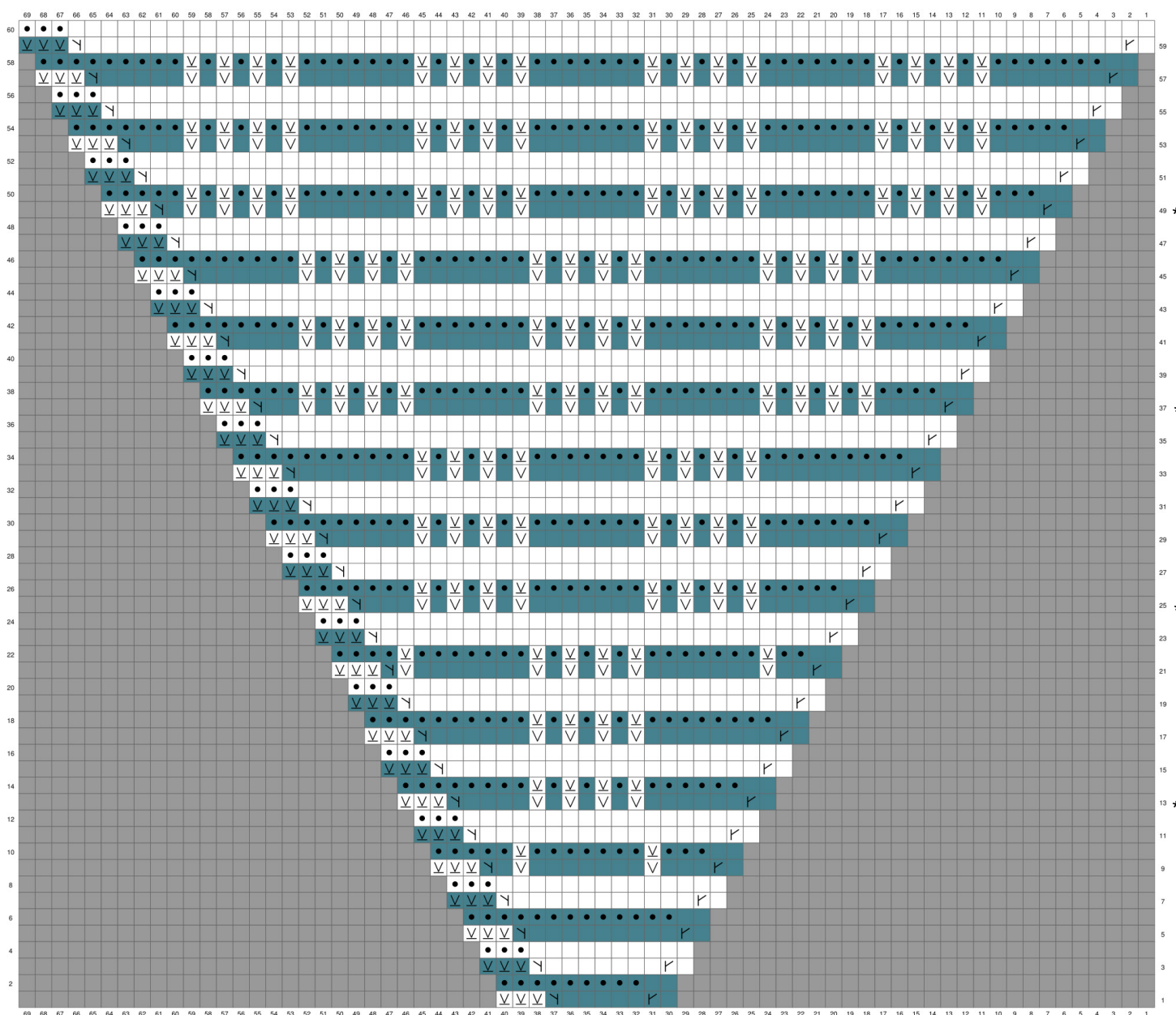




If using minis or scraps for CC, rows where a new CC will begin are marked with an \*.

### Chart Key

Main Color		Contrast Color	
	RS: K WS: P		RS: K WS: P
	RS: P WS: K		RS: P WS: K
	SI 1 wyif		SI 1 wyif
	SI 1 wyib		M1L
	M1L		M1R
	M1R		K2tog
	K2tog		No stitch



## Chart B

Charts are worked from bottom to top. RS rows are worked from right to left, WS rows are worked from left to right.

Stitch repeats are outlined in red. As the stitch count increases, additional repeats will be worked across the width of the cowl.

If using minis or scraps for CC, rows where a new CC will begin are marked with an \*.

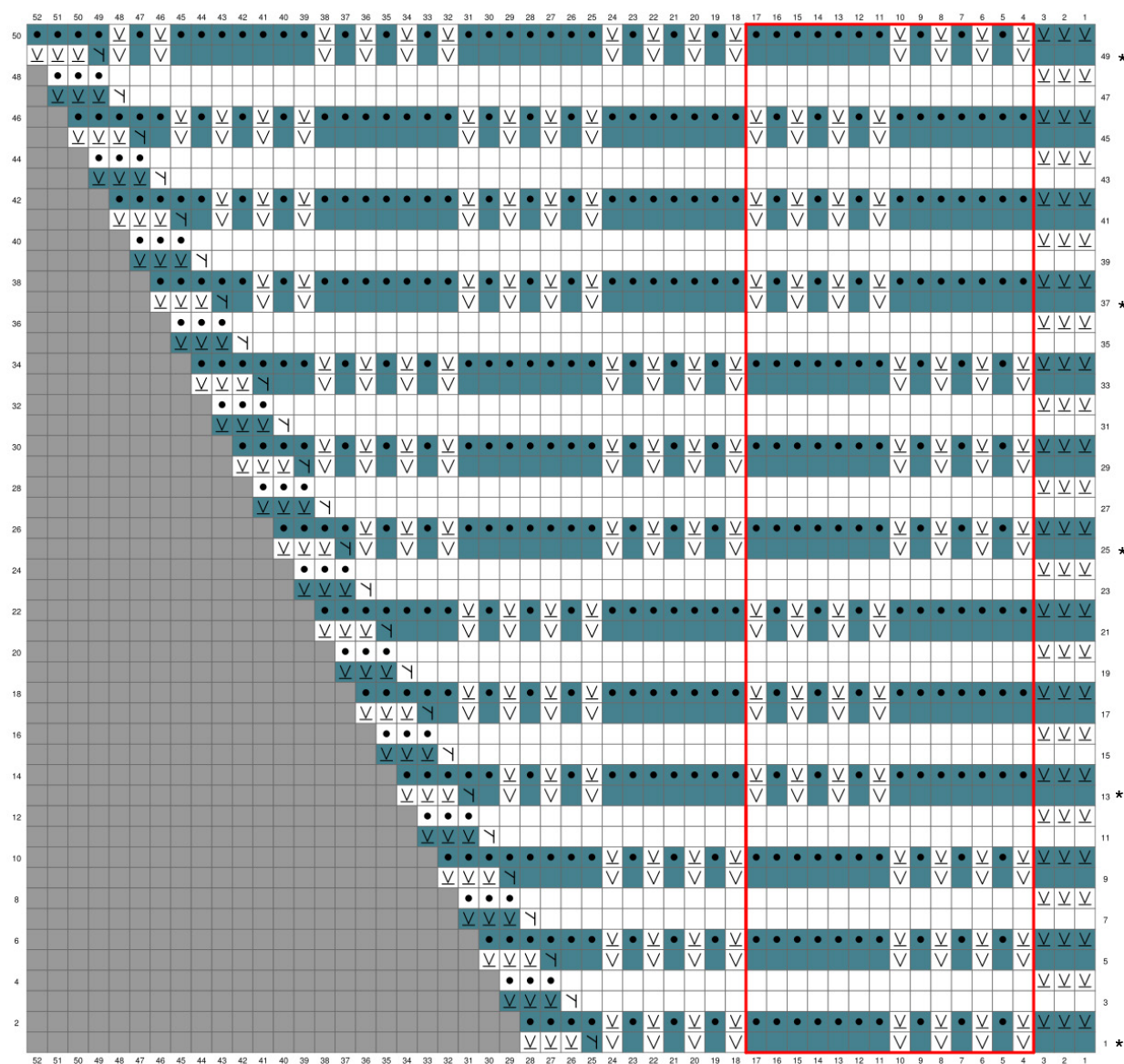
## Chart Key

### Main Color

	RS: K WS: P
	RS: P WS: K
	Sl 1 wyif
	Sl 1 wyib
	M1L
	M1R
	K2tog

### Contrast Color

	RS: K WS: P
	RS: P WS: K
	Sl 1 wyif
	M1L
	M1R
	K2tog
	No stitch





## Chart C

Charts are worked from bottom to top. RS rows are worked from right to left, WS rows are worked from left to right.

Stitch repeats are outlined in red. As the stitch count increases, additional repeats will be worked across the width of the cowl.

If using minis or scraps for CC, rows where a new CC will begin are marked with an \*.

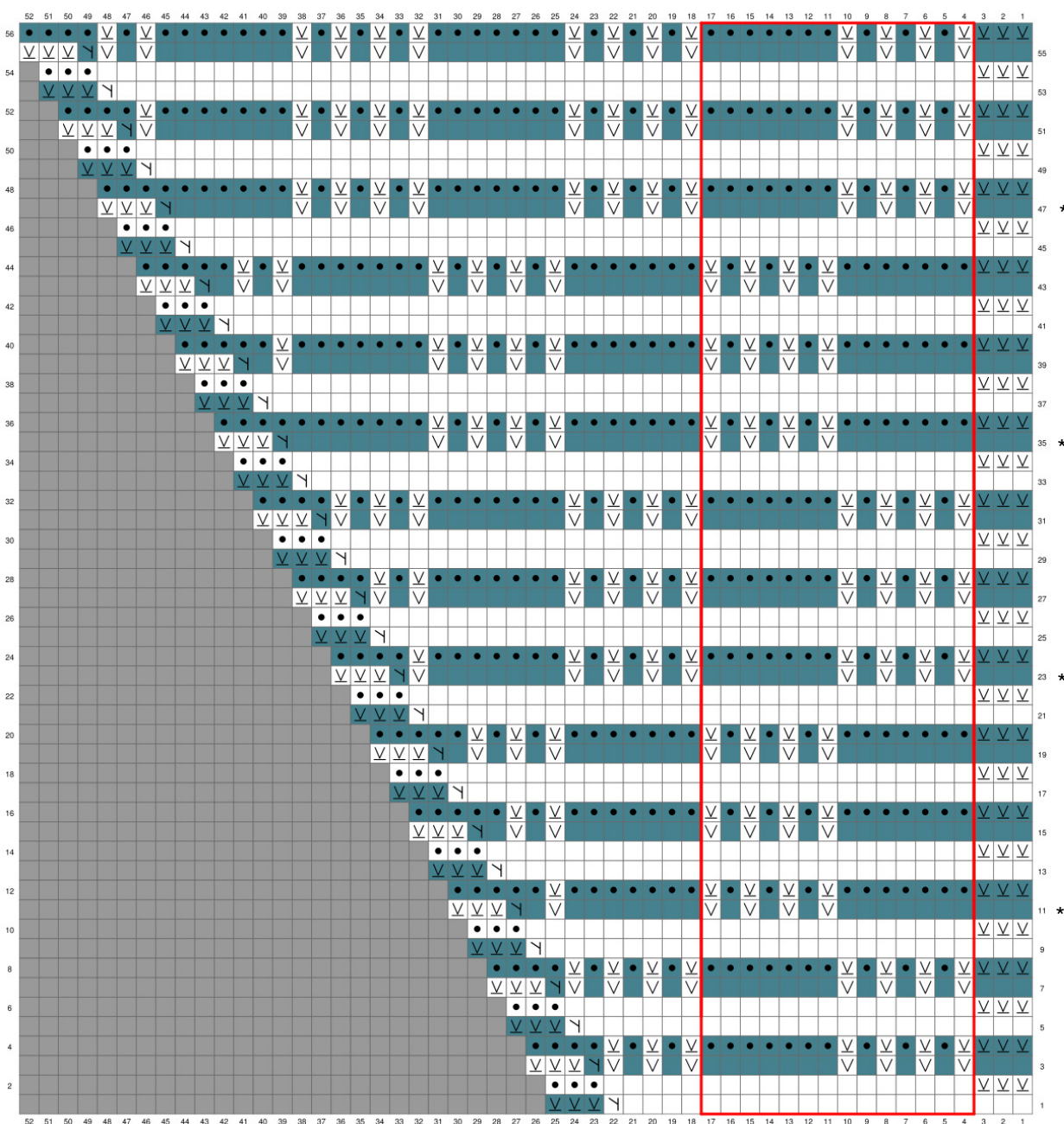
## Chart Key

### Main Color

	RS: K WS: P
	RS: P WS: K
	Sl 1 wyif
	Sl 1 wyib
	M1L
	M1R
	K2tog

### Contrast Color

	RS: K WS: P
	RS: P WS: K
	Sl 1 wyif
	M1L
	M1R
	K2tog
	No stitch



## Chart D

Charts are worked from bottom to top. RS rows are worked from right to left, WS rows are worked from left to right.

Stitch repeats are outlined in red. As the stitch count decreases, fewer repeats will be worked across the width of the cowl.

If using minis or scraps for CC, rows where a new CC will begin are marked with an \*.

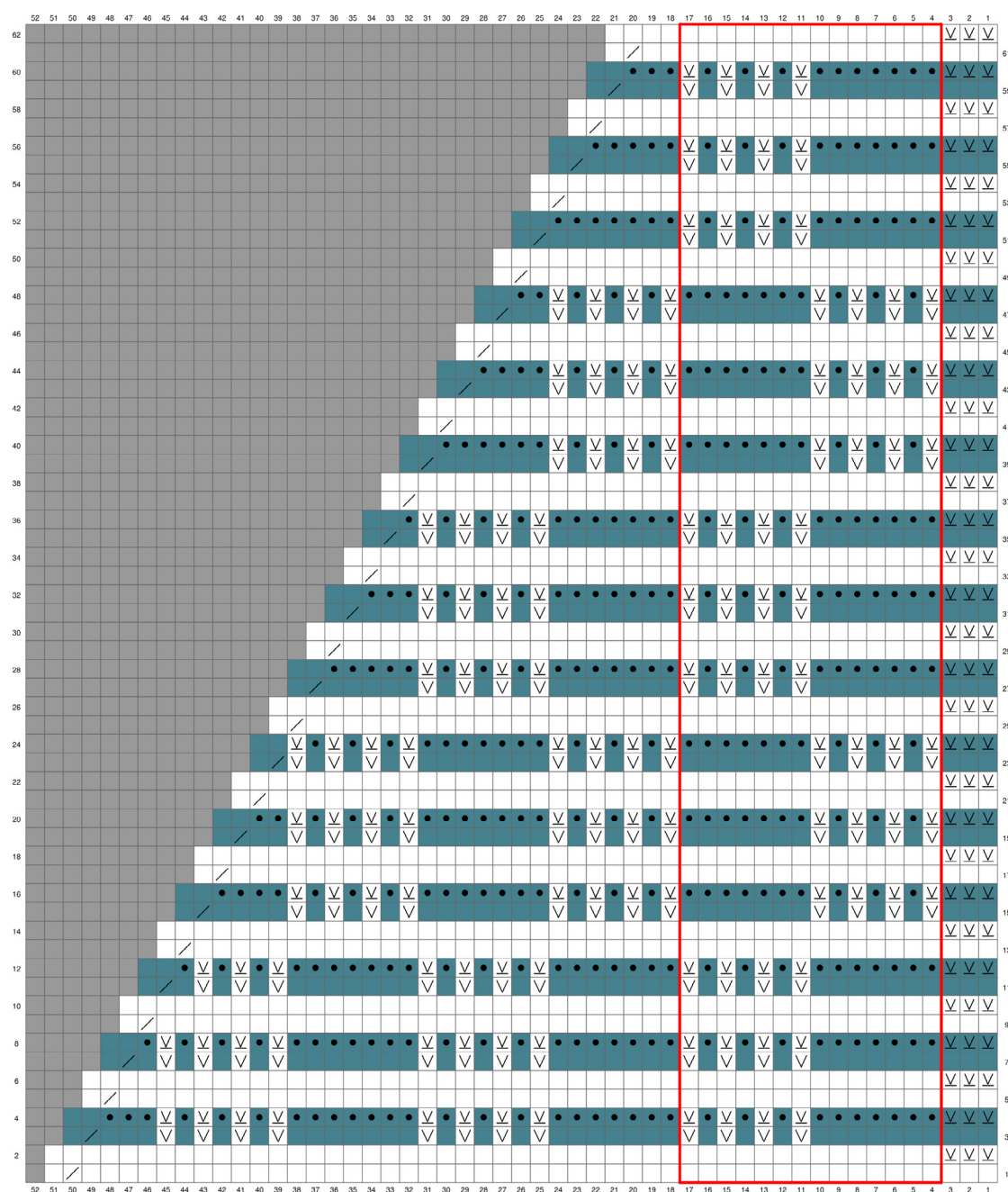
## Chart Key

### Main Color

	RS: K WS: P
	RS: P WS: K
	SI 1 wyif
	SI 1 wyib
	M1L
	M1R
	K2tog

### Contrast Color

	RS: K WS: P
	RS: P WS: K
	SI 1 wyif
	M1L
	M1R
	K2tog
	No stitch





SAMANTHA  
GUERIN DESIGN

## CONTACT & SUPPORT

---



[SamanthaGuerinDesign.com](https://SamanthaGuerinDesign.com)



[@Samantha\\_guerin\\_design](https://www.instagram.com/Samantha_guerin_design)

**ravelry**

[SamanthaGuerin](https://www.ravelry.com/designers/samanthaguerin)



[Samanthaguerindesign@gmail.com](mailto:Samanthaguerindesign@gmail.com)

---

For this project, use the hashtags

#samanthaguerindesigns

#gridgambitcowl



### More patterns to enjoy



SALTY AIR SWEATER



MOONTOWER



FALL FROLIC