

BROOKLYN TWEED



GLASTONBURY

Stranded Colorwork Pullover

DESIGNED BY
Sophie Ochera
Caen, France

PATTERN VERSION
1.0
Released 04.19.2023

GLASTONBURY

A straightforward checkerboard morphs into shifting op-art bands, leading you on a fantastical journey of light and shadow. Decide where your path will take you: from an optional tubular cast-on to a straight or tapered unisex fit, bounded by tidy twisted-rib hems. The road goes ever on, but your sweater needn't — follow our map to adjust sleeve and body length without disrupting the colorwork pattern.



Construction Notes



- The body and sleeves are worked circularly from the bottom up and joined at the underarms, then the yoke is worked in the round to the neckline. The neckline is shaped using Short Rows: Wrap & Turn Method (see Special Techniques) before the collar is worked.
- Two body shapes are provided: Straight (Version I) and Tapered (Version II). Version II has a slightly longer body length than Version I.

This pattern may be printed and used for personal, non-commercial use only and may not be reproduced, sold, or distributed. All images, text, and illustration © Brooklyn Tweed 2023. Class use and/or translations are allowed only with the express written permission of Brooklyn Tweed. For questions, please contact us at info@brooklyntweed.com.

SPECS



Finished Dimensions

SIZES 1 (2, 3, 4) (5, 6, 7) (8, 9, 10, 11)

38½ (42¼, 46, 50) (53¾, 57½, 61½) (65¼, 69, 73, 76¾)"
[98 (107.5, 117, 127) (136.5, 146, 156) (165.5, 175.5, 185.5, 195)
cm] circumference at chest

Note how the sizes are segmented within the parentheses for ease of following instructions. Make a note of which position in which set of parentheses your chosen size falls before you begin.

Sunra (cover, right) is 6'2"/188 cm tall with a chest circumference of 38"/96.5 cm and is wearing Size 3, Version I with 8"/20 cm positive ease.

Cadence (cover, bottom left) is 5'8"/172.5 cm tall with a chest circumference of 38¼"/97 cm and is wearing Size 3, Version I with 7¾"/19.5 cm positive ease.



Gauge

25 stitches & 27 rounds = 4"/10 cm in stranded stockinette stitch with Size A needle, after blocking

SPECS *(continued)*

|| *Needles*

Size A (for Main Fabric)

One each 16"/40 cm and 32"/80 cm circular needle, and one set of Double Pointed Needles (DPNs)* in size needed to obtain gauge listed
Suggested Size: 3 mm (US 2½)

Size B (for Ribbing)

One each 16"/40 cm and 32"/80 cm circular needle, and one set of DPNs* one size smaller than Size A
Suggested Size: 2.75 mm (US 2)

Size C (Optional; for Tubular Cast On only)

One 32"/80 cm circular needle and one set of DPNs* one size smaller than Size B
Suggested Size: 2.5 mm (US 1½)

**32"/80 cm circular needle may be used instead of DPNs if using the Magic Loop method for working small circumferences in the round (e.g. sleeves).*



Additional Tools

Required: Stitch markers (including one in a unique style for BOR), stitch holders or waste yarn, blunt tapestry needle

Optional: T-pins

If working Tubular Cast On, you will also require smooth waste yarn (fingering weight cotton, silk, or bamboo yarn) and Size C needle.



Techniques

Required: Cast on of knitter's choice, stranded colorwork, increasing and decreasing in pattern, reading charts, Short Rows: Wrap & Turn Method, bind off of knitter's choice, Grafting

Optional: Tubular Cast On, Rib Cabled Cast On, Provisional Crochet Cast On

We provide pattern support!

Email us at support@brooklyntweed.com



Yarn

BROOKLYN TWEED LOFT —

100% American Targhee-Columbia Wool
(275 yards/251 meters per 50 grams)

5 (5, 5, 6) (6, 7, 7) (8, 8, 9, 9) skeins Main Color (MC);
4 (4, 5, 5) (5, 6, 6) (7, 7, 7, 8) skeins Contrast Color (CC)

MC: 1135 (1260, 1370, 1505) (1635, 1750, 1915) (2040, 2160, 2295, 2430) yards [1038 (1152, 1253, 1376) (1495, 1600, 1751) (1865, 1975, 2099, 2222) meters]

CC: 930 (1030, 1120, 1235) (1335, 1435, 1565) (1670, 1765, 1880, 1990) yards [850 (942, 1024, 1129) (1221, 1312, 1431) (1527, 1614, 1719, 1820) meters]

of fingering weight wool yarn

Photographed in colors *Cast Iron* (MC) & *Newsprint* (CC)

OR

BROOKLYN TWEED TONES LIGHT —

100% American Columbia Wool
(225 yards/206 meters per 50 grams)

6 (6, 7, 7) (8, 8, 9) (10, 10, 11, 11) skeins Main Color (MC); 5 (5, 5, 6) (6, 7, 7) (8, 8, 9, 9) skeins Contrast Color (CC)

MC: 1135 (1260, 1370, 1505) (1635, 1750, 1915) (2040, 2160, 2295, 2430) yards [1038 (1152, 1253, 1376) (1495, 1600, 1751) (1865, 1975, 2099, 2222) meters]

CC: 930 (1030, 1120, 1235) (1335, 1435, 1565) (1670, 1765, 1880, 1990) yards [850 (942, 1024, 1129) (1221, 1312, 1431) (1527, 1614, 1719, 1820) meters]

of fingering weight wool yarn

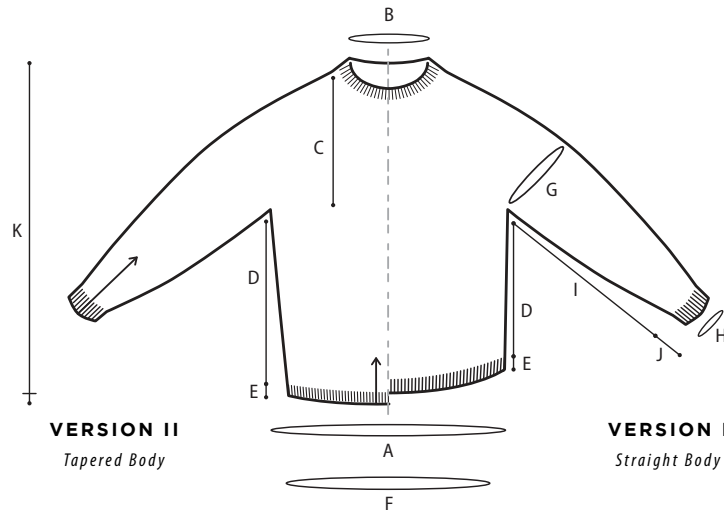
Photographed in colors *Granita Undertone* (MC) & *Goldfinch Undertone* (CC)

The underlined skein counts are near or exact to the listed yardage; consider adding an extra skein.

Note: The yarn quantities listed work for both Version I and Version II due to the longer body length of the tapered Version II.



SCHEMATIC



Sizes												
		1	2	3	4	5	6	7	8	9	10	11
A	Chest Circumference	38½	42¼	46	50	53¾	57½	61½	65¼	69	73	76¾
		98	107.5	117	127	136.5	146	156	165.5	175.5	185.5	195
B	Neck Circumference	14½	15¼	17¼	18¼	20¼	21	21	22½	21½	22½	24
		37	38.5	44	46.5	51.5	53.5	53.5	57	54.5	57	61
C	Yoke Depth	8	8¼	8¼	8¾	8¾	9¼	9¼	10	9¾	10¼	10¼
		20.5	21	21	22	22	23.5	23.5	25.5	25	26	26
D	Body Length, Underarm to Hem, Version I	17¾	17¾	17¾	17¾	17¾	17¾	17¾	17¾	17¾	17¾	17¾
		45	45	45	45	45	45	45	45	45	45	45
	Body Length, Underarm to Hem, Version II	18¾	18¾	18¾	18¾	18¾	18¾	18¾	18¾	18¾	18¾	18¾
		47.5	47.5	47.5	47.5	47.5	47.5	47.5	47.5	47.5	47.5	47.5
E	Hem Length	2	2	2	2	2	2	2	2	2	2	2
		5	5	5	5	5	5	5	5	5	5	5
F	Hem Circumference, Version II	34½	38½	42¼	46	50	53¾	57½	61½	65¼	69	73
		87.5	98	107.5	117	127	136.5	146	156	165.5	175.5	185.5
G	Sleeve Circumference at Upper Arm	13½	13½	15¼	15¼	17¼	17¼	19¼	19¼	21	21	23
		34.5	34.5	38.5	38.5	44	44	49	49	53.5	53.5	58.5
H	Cuff Circumference	9	9	9	10¼	11	11	12¾	12¾	13½	13¾	14¾
		23	23	23	26	28	28	32.5	32.5	34.5	35	37.5
I	Sleeve Length Underarm to Cuff	14¼	15½	15½	15½	15½	15½	16½	16½	16½	16½	16½
		36	39.5	39.5	39.5	39.5	39.5	42	42	42	42	42
J	Cuff Length	2	2	2	2	2	2	2	2	2	2	2
		5	5	5	5	5	5	5	5	5	5	5
K	Total Length, Version I	27¾	28	28	28½	28½	29	29	29¾	29½	30	30
		70.5	71	71	72.5	72.5	73.5	73.5	75.5	75.5	76	76
	Total Length, Version II	28¾	29	29	29½	29½	30	30	30¾	30½	31	31
		73	73.5	73.5	75	75	76	76	78	77.5	78.5	78.5

All measurements are listed in inches followed by centimeters.

DASHBOARD

Pattern Notes

- Both versions of the pattern use the same instructions for the sleeves and yoke. The sleeves are worked first, then the body for your chosen version, and then the sleeves and body are joined to work the yoke.
- Read all chart rounds from right to left.
- The charts for the body and sleeves are laid out so that the yoke pattern aligns exactly. Instructions are provided throughout the pattern for ways to maintain the correct pattern alignment while adding or removing length. Note: changing the length of the garment will change the amount of yarn needed.
- When joining stitches using Grafting (see Special Techniques), you may want to add tensile strength to your yarn by twisting it in the direction in which it was plied.

Stitch Pattern

1X1 TWISTED RIBBING

Even number of stitches; 1-round repeat

Round 1: *Knit 1-tbl, purl 1-tbl; repeat from * to end.

Repeat Round 1 for pattern.



ABBREVIATIONS

See Chart Legend for abbreviations not listed here.

BOR	Beginning of Round
DPN	Double Pointed Needle
K2tog	Knit 2 Together
Knit 1-tbl	Knit 1 through the back loop
L	Left
M1L	Make 1 Left
M1R	Make 1 Right
Purl 1-tbl	Purl 1 through the back loop
R	Right
RS	Right Side
WS	Wrong Side
W&T	Wrap & Turn

For full descriptions, visit Brooklyn Tweed's Abbreviations page:

brooklyntweed.com/pages/abbreviations

VIDEO TUTORIALS

- *Selecting Colors for Colorwork*
brooklyntweed.com/pages/how-to-knit-selecting-colors-for-colorwork-video-tutorial
- *Provisional Crochet Cast On*
brooklyntweed.com/pages/how-to-knit-provisional-crochet-cast-on-one
- *Rib Cabled Cast On*
brooklyntweed.com/pages/how-to-knit-rib-cabled-cast-on-video-tutorial

WEB TUTORIALS

- *Speed Swatching for Circular Knitting*
brooklyntweed.com/pages/swatching-101
- *Short Row Shaping 101*
<https://brooklyntweed.com/pages/short-row-shaping>
- *Blocking 101*
brooklyntweed.com/pages/blocking-101

Visit Brooklyn Tweed's Resources page for additional tutorials: brooklyntweed.com/pages/resources

PATTERN

1 | Sleeves

Cast on stitches using the cast on method of your choice. We recommend the 1x1 Tubular Cast On or Rib Cabled Cast On (see Special Techniques) for this pattern.

If using the 1x1 Tubular Cast On, work as follows: With Size C needle(s) in preferred style for small circumference knitting, waste yarn, and the Provisional Crochet Cast On (see Special Techniques), cast on 29 (29, 29, 33) (35, 35, 41) (41, 43, 44, 47) stitches.

Switch to MC for Foundation Row, then work Row/Rounds 1-4 as directed in Special Techniques; you will have 56 (56, 56, 64) (68, 68, 80) (80, 84, 86, 92) stitches after Round 2.

After Round 4 is complete, switch to Size B needle(s) and proceed to Work Ribbing.

If using the Rib Cabled Cast On or alternate cast on, work as follows: With Size B needle(s) in preferred style for small circumference knitting and MC, cast on 56 (56, 56, 64) (68, 68, 80) (80, 84, 86, 92) stitches. Place marker for BOR and join to work in the round, being careful not to twist your ring of stitches.

WORK RIBBING

Begin 1x1 Twisted Ribbing (see Stitch Pattern). Continue in pattern until piece measures 2⁷/₅ cm from cast-on edge.

Switch to Size A needle(s).

Setup Round: Knit 5 (5, 5, 4) (4, 4, 2) (2, 3, 7, 9), M1L, *knit 3 (3, 3, 8) (4, 4, 5) (5, 7, 8, 5), M1L; repeat from * 14 (14, 14, 6) (14, 14, 14) (14, 10, 8, 14) more times, knit to end. [72 (72, 72, 72) (84, 84, 96) (96, 96, 96, 108) stitches on needle(s)]



SHAPE SLEEVE

Join in CC and work Sleeve Chart for your size (see Charts starting on page 11), increasing stitches in pattern as indicated on the chart.

Note: In order for the pattern on the yoke to line up, it is vital that the final round worked on the sleeve matches the last round of your sleeve chart. If you need to add or remove additional length, you can either add or remove one full 14-round repeat (without increases) at the beginning or end of the sleeve, or you can add or remove one half repeat (7 rounds) at the beginning of the sleeve by starting the sleeve with the alternate color. For example, if the first square on your chart is MC and you want to add 7 rounds to your sleeve, start with CC and maintain the check pattern.

After all sleeve shaping is complete, you will have worked 6 (6, 12, 12) (12, 12, 12) (12, 18, 18, 18) increase rounds. You have 84 (84, 96, 96) (108, 108, 120) (120, 132, 132, 144) stitches on your needle(s).

Break yarns and transfer 6 stitches on either side of the BOR marker to stitch holder or waste yarn. [12 underarm stitches on hold]

Transfer remaining 72 (72, 84, 84) (96, 96, 108) (108, 120, 120, 132) stitches to a separate stitch holder or waste yarn and set aside.

Repeat for second sleeve.

2 | Body

Version I Only:

Cast on stitches using the cast on method of your choice. We recommend the 1x1 Tubular Cast On or the Rib Cabled Cast On for this pattern.

If using the 1x1 Tubular Cast On, work as follows: With Size C needle, waste yarn, and the Provisional Crochet Cast On, cast on 109 (120, 131, 142) (152, 163, 174) (185, 196, 207, 217) stitches.

Switch to MC for Foundation Row, then work Row/Rounds 1-4 as directed in Special Techniques; you will have 216 (238, 260, 282) (302, 324, 346) (368, 390, 412, 432) stitches after Round 2.

After Round 4 is complete, switch to longer Size B needle and proceed to Work Ribbing.

If using the Rib Cabled Cast On or alternate cast on, work as follows: With longer Size B needle and MC, cast on 216 (238, 260, 282) (302, 324, 346) (368, 390, 412, 432) stitches. Place marker for BOR and join to work in the round, being careful not to twist your ring of stitches.

WORK RIBBING

Begin 1x1 Twisted Ribbing. Continue in pattern until piece measures 2⁷/₅ cm from cast-on edge.

Switch to longer Size A needle.

Version I, Sizes 1-4 & 6-11 Only:

Setup Round: Knit 4 (6, 8, 10) (–, 4, 6) (8, 10, 12, 4), M1L, *knit 9, M1L; repeat from * 22 (24, 26, 28) (–, 34, 36) (38, 40, 42, 46) more times, knit to end. [240 (264, 288, 312) (–, 360, 384) (408, 432, 456, 480) stitches on needle]

Version I, Size 5 Only:

Setup Round: Knit 4, M1L, *[knit 9, M1L] 10 times, [knit 8, M1L] 1 time; repeat from * two more times, knit to end. [336 stitches on needle]

Version I, All Sizes Resume:

Join in CC and begin working Body Chart Version I (see page 14).

On first round, place side markers as follows:

Work in pattern for 66 (66, 78, 78) (90, 90, 102) (102, 114, 114, 126) stitches, place left side marker, work in pattern for 120 (132, 144, 156) (168, 180, 192) (204, 216, 228, 240) stitches, place right side marker, work remaining 54 (66, 66, 78) (78, 90, 90) (102, 102, 114, 114) stitches to BOR marker.

Note: The BOR marker is in the middle of the back, however it is not centered for all sizes. This allows the yoke charts to line up correctly; the off-center stitches will be adjusted at the end of the yoke as needed.

Continue in pattern as established, repeating Rounds 1-14 of Version I Body Chart until piece measures 19³/₄"/50 cm from cast-on edge, or desired length, ending with Round 6 of the chart.

Proceed to Yoke (Both Versions), next page.

Version II Only:

Cast on stitches using the cast on method of your choice. We recommend the 1x1 Tubular Cast On or the Rib Cabled Cast On for this pattern.

If using the 1x1 Tubular Cast On, work as follows: With Size C needle, waste yarn, and the Provisional Crochet Cast On, cast on 98 (109, 119, 130) (141, 152, 163) (174, 185, 194, 206) stitches.

Switch to MC for Foundation Row, then work Row/Rounds 1-4 as directed in Special Techniques; you will have 194 (216, 236, 258) (280, 302, 324) (346, 368, 386, 410) stitches after Round 2.

After Round 4 is complete, switch to longer Size B needle and proceed to Work Ribbing.

If using the Rib Cabled Cast On or alternate cast on, work as follows: With longer Size B needle and MC, cast on 194 (216, 236, 258) (280, 302, 324) (346, 368, 386, 410) stitches. Place marker for BOR and join to work in the round, being careful not to twist your ring of stitches.

Body, Version II (continued)

WORK RIBBING

Begin 1x1 Twisted Ribbing. Continue in pattern until piece measures 2 7/5 cm from cast-on edge.

Switch to longer Size A needle.

Setup Round: Knit 3 (4, 10, 13) (16, 3, 4) (6, 8, 13, 2), M1L, *knit 9 (9, 8, 8) (8, 9, 9) (9, 9, 8, 9), M1L; repeat from * 20 (22, 26, 28) (30, 32, 34) (36, 38, 44, 44) more times, knit to end. [216 (240, 264, 288) (312, 336, 360) (384, 408, 432, 456) stitches on needle]

Join in CC and begin working Body Chart Version II (see page 14).

On first round, place side markers as follows:

Work in pattern for 60 (60, 72, 72) (84, 84, 96) (96, 108, 108, 120) stitches, place left side marker, work in pattern for 108 (120, 132, 144) (156, 168, 180) (192, 204, 216, 228) stitches, place right side marker, work remaining 48 (60, 60, 72) (72, 84, 84) (96, 96, 108, 108) stitches to BOR marker.

Note: The BOR marker is in the middle of the back, however it is not centered for all sizes. This allows the yoke charts to line up correctly; the off-center stitches will be adjusted at the end of the yoke as needed.

Work all rounds of the chart, increasing stitches at each side marker as indicated on chart.

Note: In order for the pattern in the yoke to line up, it is vital that the final round worked on the body matches the last round of the body chart. If you need to add or remove additional length you can either add or remove one full 14-round repeat (without increases) at the beginning or end of the body, or you can add or remove one half repeat (7 rounds) at the beginning of the body by starting the body with the alternate color.

After all body shaping is complete, you will have worked 6 increase rounds. You have 240 (264, 288, 312) (336, 360, 384) (408, 432, 456, 480) stitches on your needle.

3 | Yoke (Both Versions)

The body and sleeves will now be joined and worked together. Transfer held sleeve stitches to spare needles (Size B needles may be used here).

Union Round: Continuing in pattern as established (working MC stitches in MC, and CC stitches in CC), work to 6 stitches before left side marker, transfer next 12 stitches to stitch holder or waste yarn for underarm, work across sleeve stitches for first sleeve, work across front body stitches to 6 stitches before right side marker, transfer next 12 stitches to stitch holder or waste yarn for underarm, work across sleeve stitches for second sleeve, work to end. [360 (384, 432, 456) (504, 528, 576) (600, 648, 672, 720) stitches on needle]



Yoke (*continued*)

SHAPE YOKE

Switch to shorter Size A when necessary to accommodate the number of stitches on the needle.

Work all rounds of Yoke Chart for your size (see Yoke Charts starting on page 15), decreasing stitches in pattern as indicated on the chart. Chart will be worked 30 (32, 36, 38) (42, 44, 48) (50, 27, 28, 30) times per round. Break CC after chart is complete.

After final round of your yoke chart, you will have worked 5 rounds with decreases and will have 90 (96, 108, 114) (126, 132, 144) (150, 135, 140, 150) stitches on your needle.

Sizes 1, 3, 5, 7, 9, & 11 Only:

Remove BOR marker, knit 1 stitch, replace BOR marker.

Sizes 7 & 8 Only:

Next Round: *Knit – (–, –, –) (–, –, 10) (13, –, –, –), k2tog; repeat from * to end. [– (–, –, –) (–, –, 132) (140, –, –, –) stitches remain]

Size 9 Only:

Next Round: Knit to last 2 stitches, k2tog. [134 stitches remain]

All Sizes Resume:

COLLAR

Switch to shorter Size B needle.

Work 1 round of 1x1 Twisted Ribbing.

The back of the neck is shaped with Short Rows: Wrap & Turn Method (see Special Techniques), centered over the BOR marker; slip the BOR marker as you come to it.

Short Row 1 (RS): Work as established for 20 (22, 26, 28) (30, 32, 36) (36, 32, 34, 38) stitches, W&T;

Short Row 2 (WS): Work as established to BOR marker, slip marker, work in pattern for 20 (22, 26, 28) (30, 32, 36) (36, 32, 34, 38) stitches, W&T;

Short Row 3: Work as established to 2 stitches past the wrapped stitch from the previous RS row, resolving the wrap, W&T;

Short Row 4: Work as established to 2 stitches past the wrapped stitch from the previous WS row, resolving the wrap, W&T;

Short Rows 5 & 6: Repeat Short Rows 3 & 4 one time.

Short Row 7: Work as established to BOR marker.

Next Round: Work as established across all stitches, resolving remaining wrapped stitches as you come to them.

Continue in 1x1 Twisted Ribbing as established for 12 more rounds.

Purl 1 round.

Break MC. With CC, continue in 1x1 Twisted Ribbing for 13 rounds.

Short Row 1 (RS): Work as established for 24 (26, 30, 32) (34, 36, 40) (40, 36, 38, 42) stitches, W&T;

Short Row 2 (WS): Work as established to BOR marker, slip marker, work in pattern for 24 (26, 30, 32) (34, 36, 40) (40, 36, 38, 42) stitches, W&T;

Short Row 3: Work as established to 2 stitches before the wrapped stitch from the previous RS row, W&T;

Short Row 4: Work as established to 2 stitches before the wrapped stitch from the previous WS row, W&T;

Short Rows 5 & 6: Repeat Short Rows 3 & 4 one time.

Short Row 7: Work as established to BOR marker.

Next Round: Work as established across all stitches, resolving remaining wrapped stitches as you come to them.

Bind off all stitches in pattern using your preferred stretchy bind off. Fold the collar in half on the purl round so that the MC half faces the RS and the CC half faces the WS. With a length of yarn threaded on a tapestry needle, sew the bound-off edge to the inside of the first round of the collar, taking care to work loosely so that neckline remains stretchy.

4 | *Finishing*

Transfer held underarm stitches from the body and sleeve for one side to needles. Join stitches using MC and Grafting (see Special Techniques).

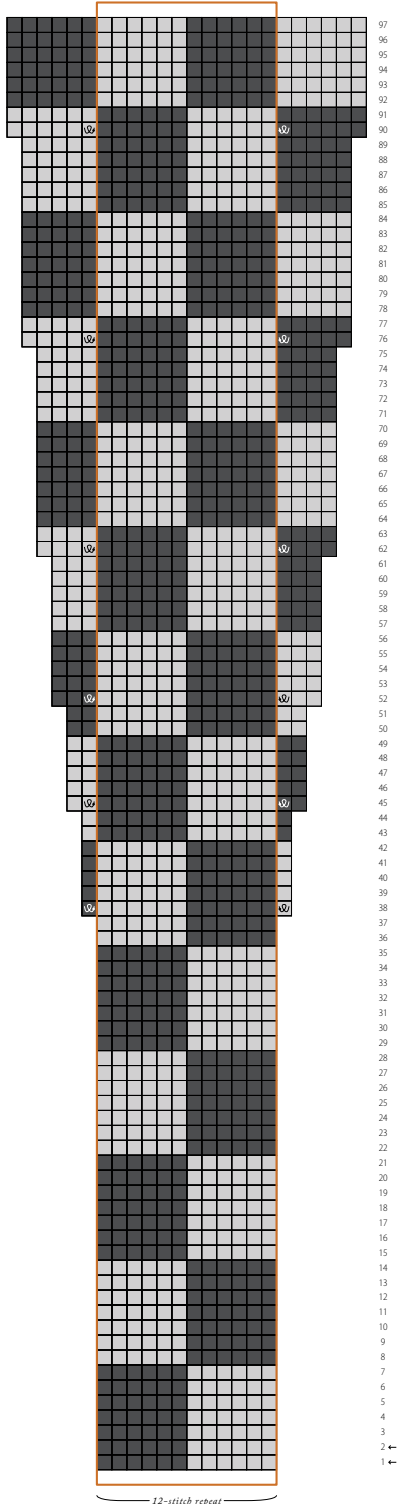
Repeat for other underarm.

Weave in all ends neatly on the WS. For a polished finish, we recommend wet-blocking to schematic measurements (see Dashboard for a how-to).

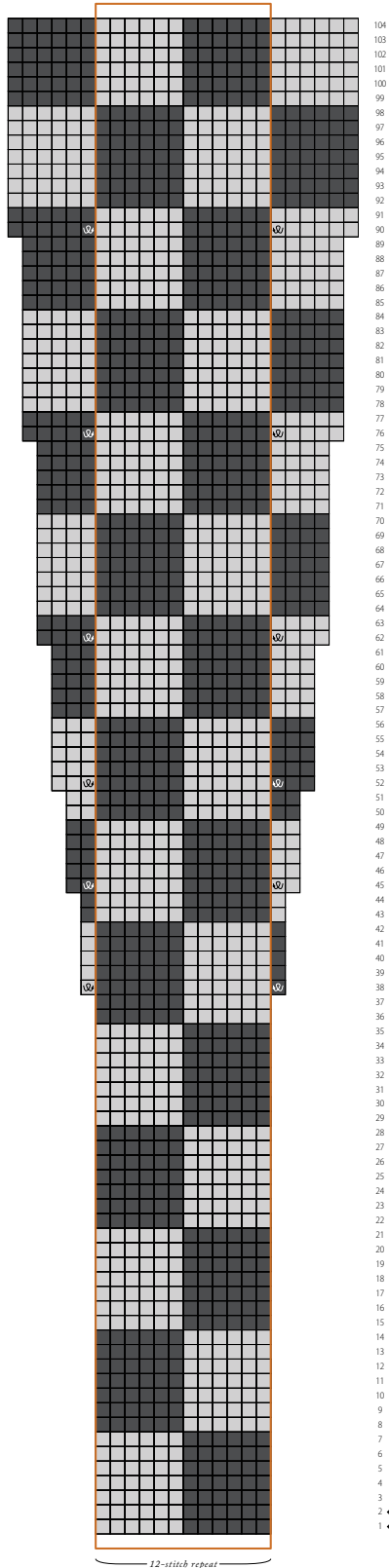


SLEEVE CHARTS

Size 1



Size 2



LEGEND



MC
Main Color



CC
Contrast Color



M1R

With L needle tip, pick up the running thread between stitch just worked and first stitch on L needle from back to front. Knit the running thread through the front loop (1 stitch increased)

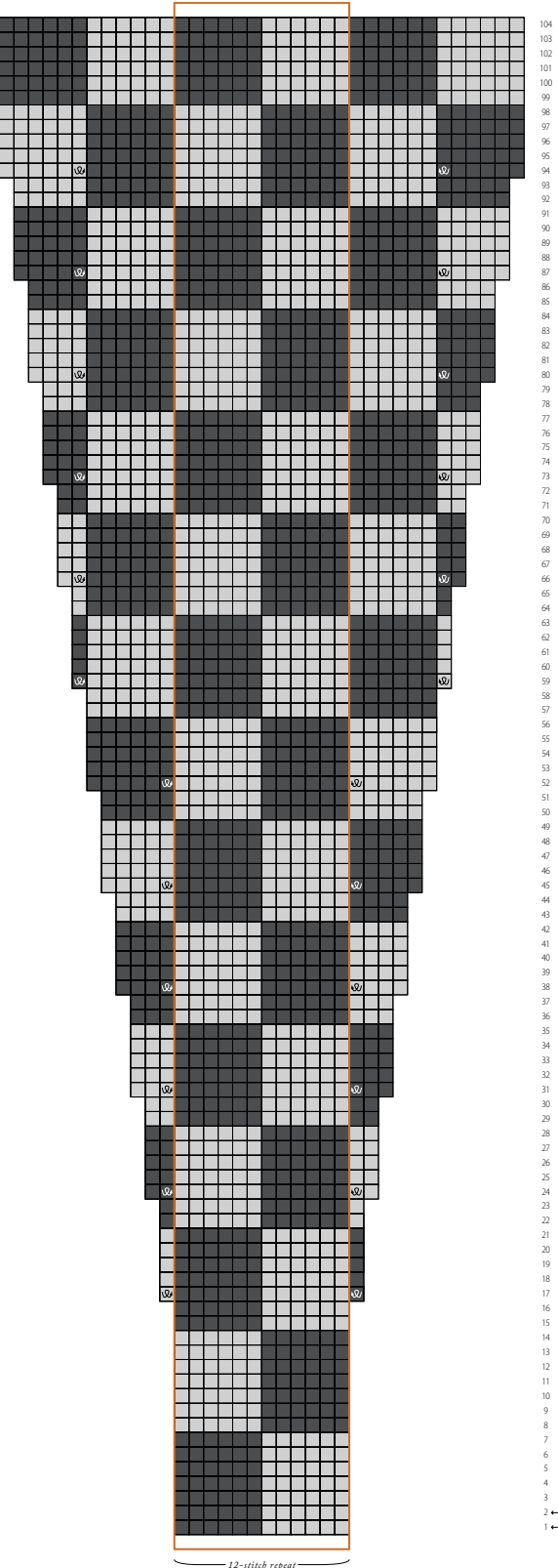


M1L

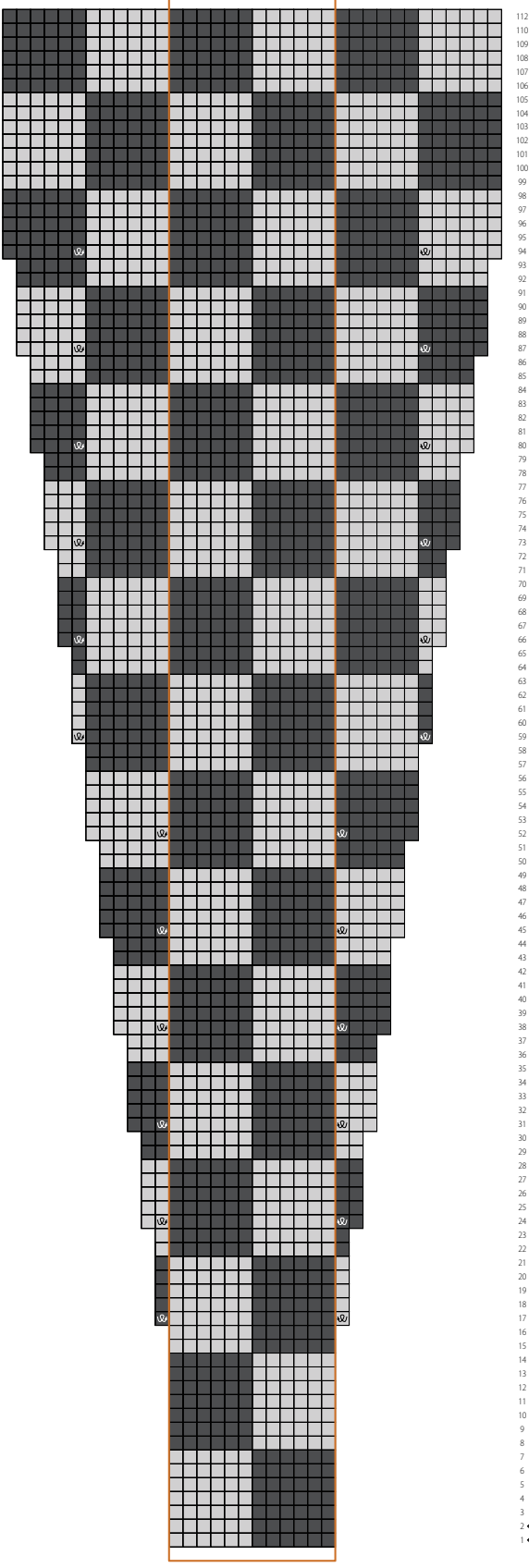
With L needle tip, pick up the running thread between stitch just worked and first stitch on L needle from front to back. Knit the running thread through the back loop (1 stitch increased)

SLEEVE CHARTS *(continued)*

Sizes 3, 4, 5, & 6

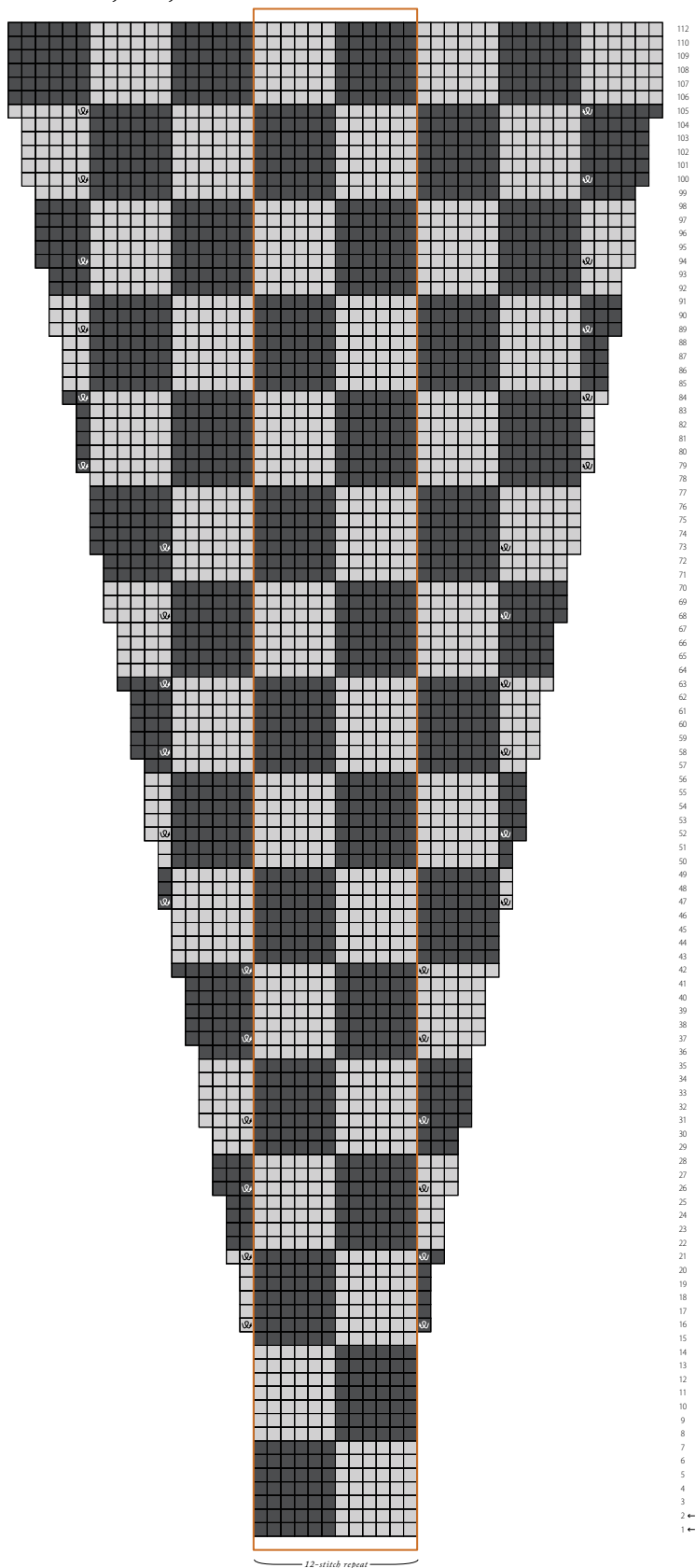


Sizes 7 & 8



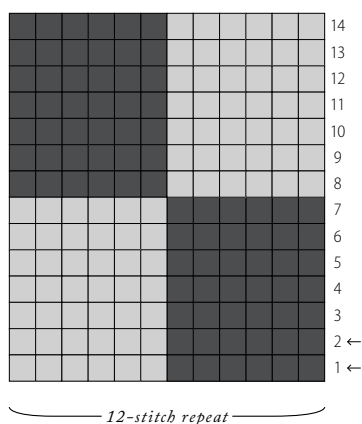
SLEEVE CHARTS *(continued)*

Sizes 9, 10, & 11



BODY CHARTS

Version I



LEGEND



MC
Main Color



CC
Contrast Color



M1R
With L needle tip, pick up the running thread between stitch just worked and first stitch on L needle from back to front. Knit the running thread through the front loop. (1 stitch increased)



M1L
With L needle tip, pick up the running thread between stitch just worked and first stitch on L needle from front to back. Knit the running thread through the back loop. (1 stitch increased)

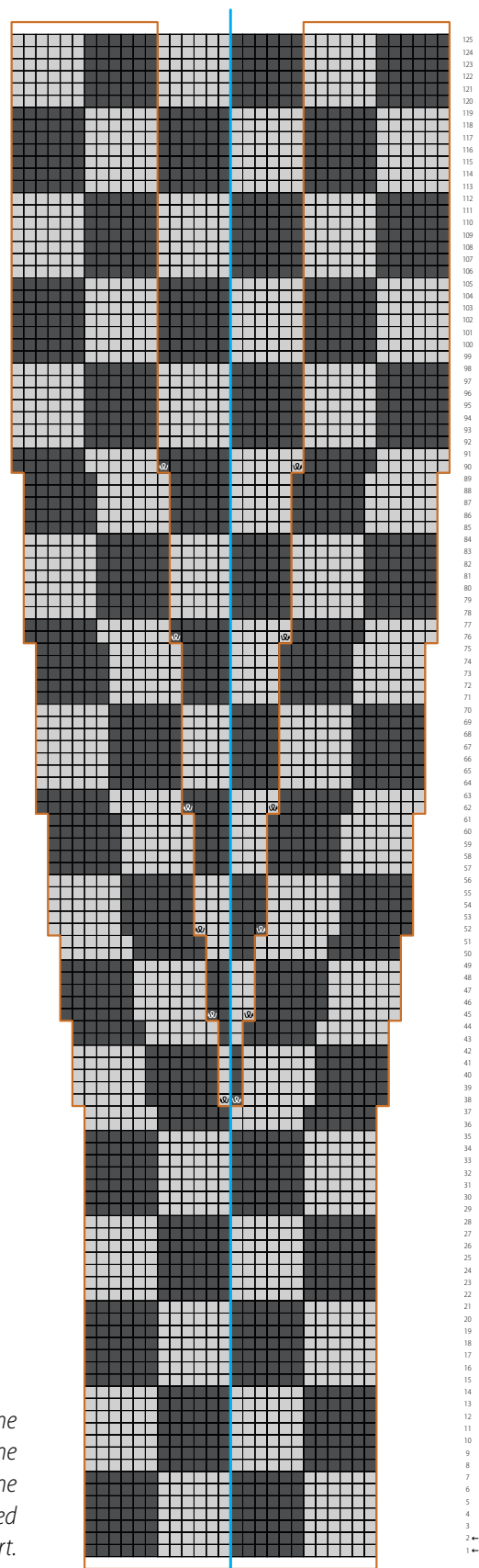


Repeat
Stitches within brackets create the pattern repeat.



Side Stitch Marker
Slip marker as you encounter it.

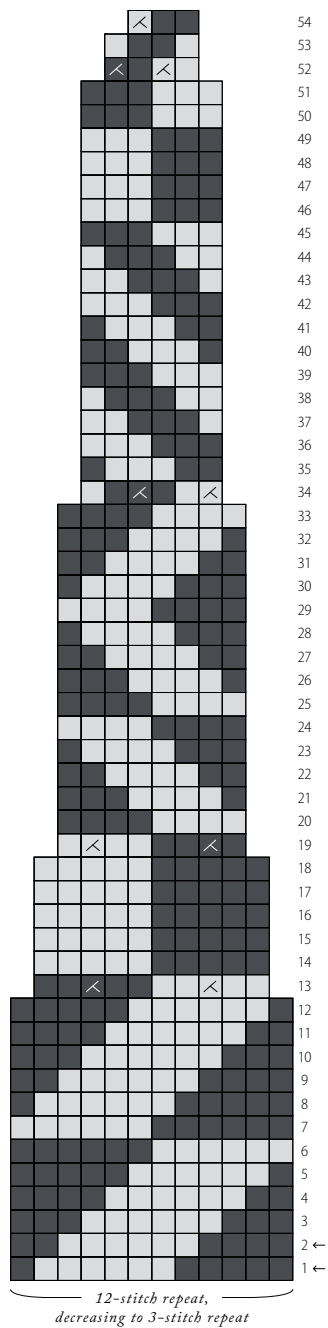
Version II



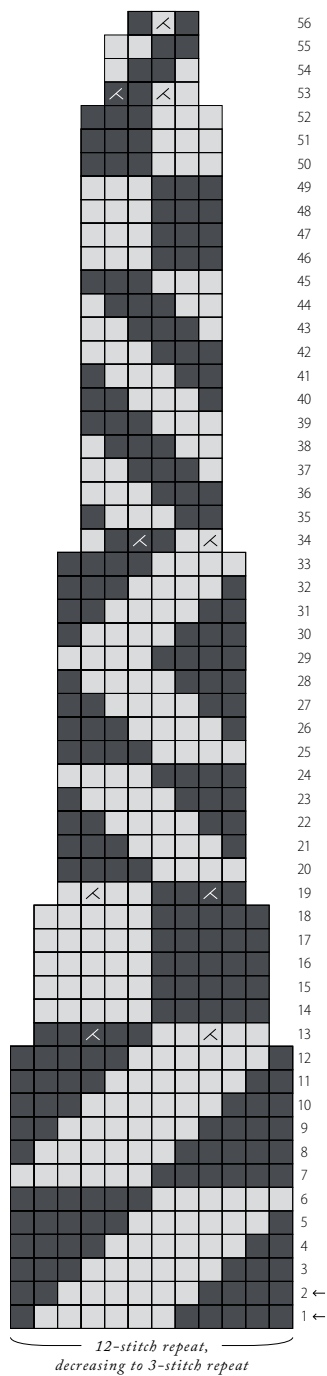
Note: Version II chart depicts stitches on each side of the side marker for both left and right sides. After slipping the first side marker, as you are working the front stitches, the final repeat before the second side marker will be worked from the first pattern repeat of the chart.

YOKE CHARTS


Size 1



Sizes 2 & 3

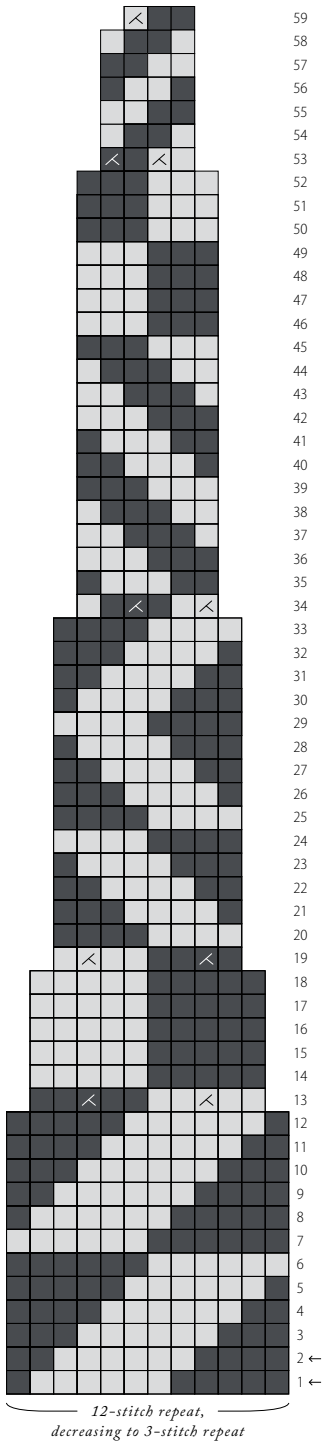


LEGEND

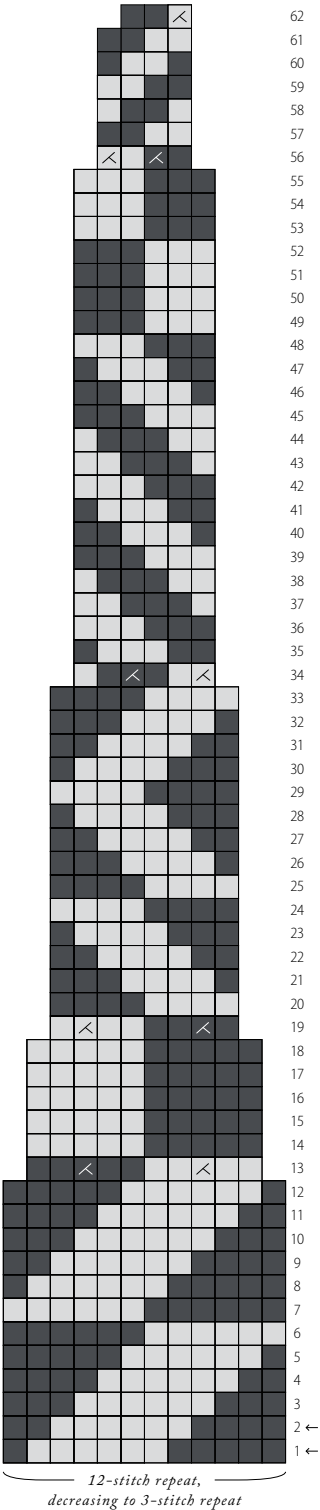
-  *MC*
Main Color
-  *CC*
Contrast Color
-  *K2tog*
Knit 2 stitches together.
(1 stitch decreased; leans right)

YOKE CHARTS *(continued)*

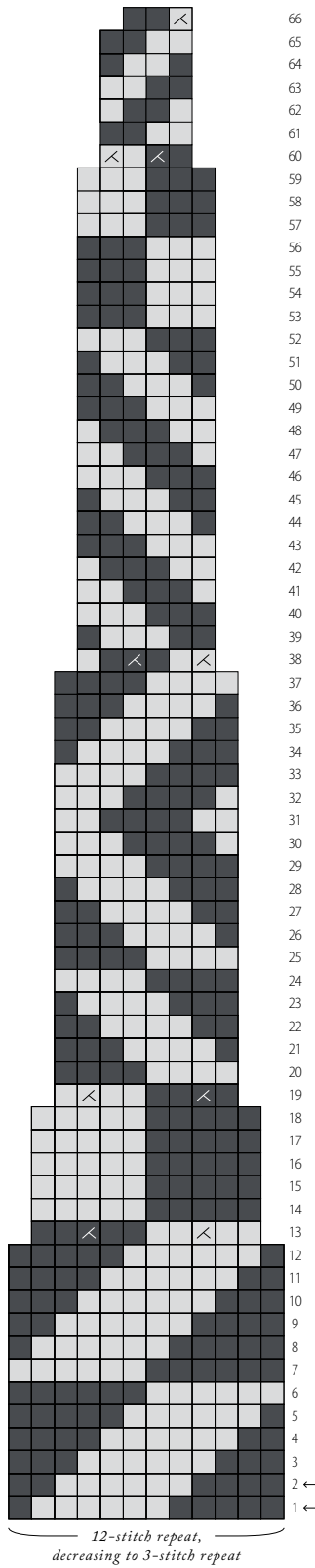
Sizes 4 & 5



Sizes 6 & 7



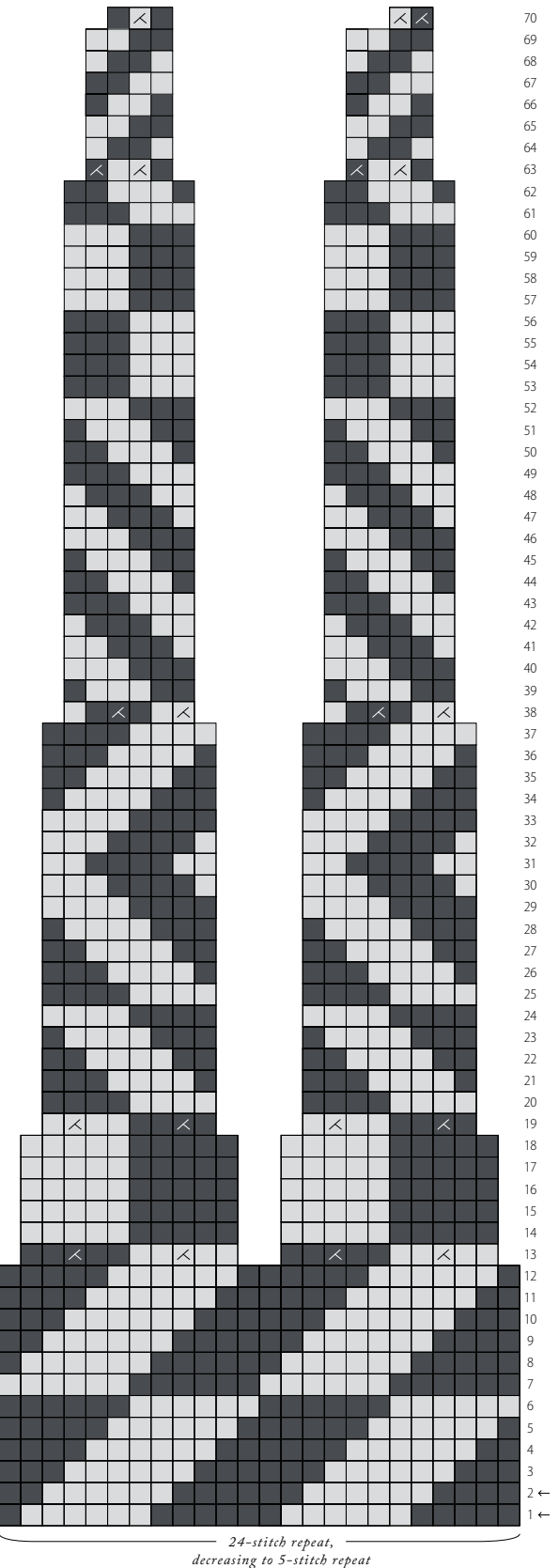
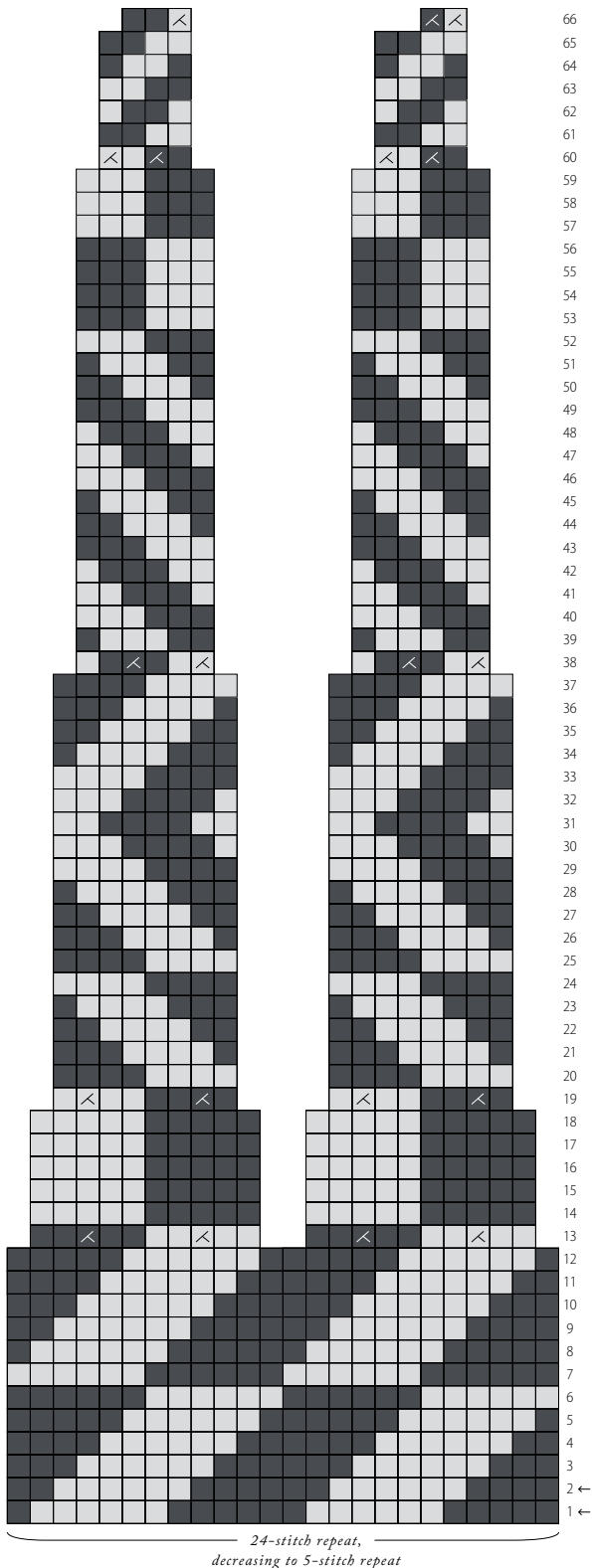
Size 8



YOKE CHARTS *(continued)*

Sizes 10 & 11

Size 9



SPECIAL TECHNIQUES

1x1 Tubular Cast On

Using Size C circular needle or needle(s) in preferred style for small-circumference circular knitting, waste yarn, and your preferred cast-on method, cast on with a relaxed tension the number of stitches directed for piece. Do not join.

Foundation Row (WS): With working yarn, purl all stitches. This row is worked directly into your waste yarn stitches.

Row 1 (Increase Row; RS): *Knit 1, insert your L needle tip from front to back under the running thread between the stitch you just worked and the next stitch on L needle, then purl this stitch (increasing one); repeat from * to last 2 stitches, knit 1, insert L needle tip from front to back under the running thread between the stitch you just worked and the next stitch on L needle, then purl the lifted running thread together with last stitch on L needle.

Join for working in the round, placing a unique marker for BOR.

Round 2 (Tubular Purl Round): *Slip 1 purlwise with yarn in back, purl 1; repeat from * to end.

Round 3 (Tubular Knit Round): *Knit 1, slip 1 purlwise with yarn in front; repeat from * to end.

Round 4: Repeat Round 2.

You may remove the waste yarn from your tubular edge at any time by carefully snipping it with scissors and unraveling it (or unzipping the crochet chain); however, it is recommended that you wait until you have worked 1–2"/2.5–5 cm of fabric before removing. Take care during this process to avoid accidentally cutting any of your working yarn. You may leave your waste yarn in your project through completion of knitting and blocking if you wish. If you choose to leave it in, the waste yarn will protect your tubular edge from being damaged or overstretched during knitting and blocking.

Provisional Crochet Cast On ►

For a visual demonstration, visit our video tutorial at BrooklynTweed.com/pages/resources.

With waste yarn and crochet hook, make a slip knot and place it on the crochet hook. Crochet 5 or 6 chains before picking up your knitting needle.

Holding the crochet hook in your right hand and the knitting needle in your left hand, bring the yarn behind the knitting needle, and with crochet hook held in front of knitting needle, catch the yarn with the crochet hook and draw the loop through the loop that you previously placed on the hook. There is now one loop on your crochet hook and one stitch on your knitting needle. *Bring yarn to back, behind the knitting needle, keeping the crochet hook in front of the knitting needle. Catch a loop of yarn with the hook and draw it through the loop on hook (one new stitch has been cast on to the knitting needle and one new chain made with hook); repeat from * until the desired number of stitches have been cast on to your needle. Note that as you work, the number of stitches will increase on your knitting needle, though you should never have more than one chain on your crochet hook. You now have the desired number of stitches on your needle and one chain on the crochet hook. Chain a few more stitches with the hook (do not catch the knitting needle when making these), then break the yarn leaving a 6"/15 cm tail and draw tail through last chain. Switch to the working yarn and begin piece as instructed in pattern.

When you are ready to remove the waste yarn, undo the chain where it was fastened off and carefully pull out the waste yarn, thus “unzipping” the chain.

SPECIAL TECHNIQUES *(continued)*

Rib Cabled Cast On ▶

This is a variation of Cabled Cast On for use with 1x1 Ribbing. If you hold the working yarn continental-style (in the left hand), be sure to bring the yarn around to the front for a purl stitch or around to the back for a knit stitch after placing the new stitch on L needle and before inserting the R needle between the stitches to make the next stitch. For a visual demonstration, visit our video tutorial at BrooklynTweed.com/pages/resources.

Make a slip knot on L needle to begin. Insert R needle purlwise into slip knot and purl a new stitch. Place new stitch on L needle. *Insert R needle from the front between the first and second stitch on the L needle, wrap strand of yarn around R needle as you would for a knit stitch and pull through, place this new loop onto L needle, insert R needle from behind the L needle between the first and second stitch on the L needle, wrap strand of yarn around R needle as you would for a purl stitch and pull through, place this new loop onto L needle; repeat from * until required number of stitches have been cast on, ending with a knit stitch if casting on an odd number of stitches.

After last stitch has been cast on: If last stitch cast on was a knit stitch, slip last stitch purlwise to R needle, bring working yarn to front between needles, return last stitch to L needle and pull working yarn snugly. If last stitch cast on was a purl stitch, slip last stitch purlwise to R needle, bring working yarn to back between needles, return last stitch to L needle and pull working yarn snugly. Repositioning the working yarn in this way creates a cleaner edge at the end of your cast-on row. If using this method to cast on stitches to a piece in progress, omit the slip knot and begin at *.

Method may be reversed by knitting into slip knot, then alternating purl and knit cast-on stitches.

Short Rows: Wrap & Turn Method

ON A RS ROW:

Slip next stitch to R needle, pass yarn from back to front, slip stitch back to L needle.

Turn to work WS row, passing yarn to front of work. When you work the next stitch, take care to pull yarn snugly.

ON A WS ROW:

Slip next stitch to R needle, pass yarn from front to back, slip stitch back to L needle.

Turn to work RS row, passing yarn to back of work.

WHEN YOU COME TO A WRAPPED STITCH IN SUBSEQUENT ROWS:

To hide a wrapped purl stitch on the RS: Slip the wrapped stitch to the R needle, insert the L needle into the wrap and put it on the R needle, slip stitch and wrap back to L needle and purl them together.

To hide a wrapped knit stitch on the RS: Insert the R needle into the wrap and then into the wrapped stitch and work them together.

To hide a wrapped knit stitch on the WS: Tilt the L needle downward and lift the back of the wrap onto the L needle, then knit the wrapped stitch and the wrap together.

To hide a wrapped purl stitch on the WS: Insert the R needle from behind, under the wrap, and then into the wrapped stitch, then purl them together.

SPECIAL TECHNIQUES *(continued)*

Grafting

Grafting is used to sew live stitches together in a way that mimics a row of knitting.

Pieces to be joined are live on needles, with right sides facing out and both needle tips pointing to the right. Use a length of yarn approximately four times the length of the finished seam, attached to the right edge of the fabric on the back needle (use the yarn the piece was knitted with, or attach a new length of yarn). Thread the yarn onto a blunt tapestry needle and follow the instructions below, working from right to left (note that you will work into each stitch two times):

Step 1: Insert tapestry needle into first stitch on front needle as if to purl; pull yarn through, but do not slip this stitch from needle.

Step 2: Insert tapestry needle into first stitch on back needle as if to knit; pull yarn through, but do not slip this stitch from needle.

Step 3: Insert tapestry needle into first stitch on front needle as if to knit, slipping this stitch off the needle. Insert tapestry needle into next stitch on front needle as if to purl and pull yarn through this stitch, tugging it gently.

Step 4: Insert tapestry needle into first stitch on back needle as if to purl, slipping this stitch off the needle. Insert tapestry needle into next stitch on back needle as if to knit and pull yarn through this stitch, tugging it gently.

Repeat steps 3 and 4 until a single stitch remains on each needle, adjusting the tension of the sewing yarn every few stitches so that it mimics the tension of the knitting. To finish, insert tapestry needle into final stitch on front needle as if to knit, slipping it off of the needle. Now, insert tapestry needle into final stitch on back needle as if to purl, slipping it off of the needle. Pull the yarn through and fasten off gently so as not to distort the stitches.

CONNECT WITH US



SHARE YOUR PROGRESS

Join our community!

*#GlastonburyPullover
#BTintheWild*



SIGN UP FOR OUR NEWSLETTER

*Be the first to learn of upcoming
sales and inspiring new releases!*

*[brooklyntweed.com/pages/
newsletter-sign-up](https://brooklyntweed.com/pages/newsletter-sign-up)*



JOIN OUR RAVELRY FAN CLUB

We love seeing your progress!

*[ravelry.com/groups/
brooklyn-tweed-fan-club](https://ravelry.com/groups/brooklyn-tweed-fan-club)*

RESOURCES

Resources you may find helpful:

- *Selecting a Sweater Size*
brooklyntweed.com/pages/selecting-a-sweater-size
- *Stranded Colorwork 101*
brooklyntweed.com/pages/stranded-colorwork-101
- *Color Dominance 101*
brooklyntweed.com/pages/how-to-knit-color-dominance-101-video-tutorial



SOPHIE OCHERA

Caen, France

Coming from a textile design background, Sophie loves to design highly decorative and colorful knitwear patterns that are inspired by textiles and folk costumes from around the world.

She has been designing textiles for the fashion industry since 2004, including prints, wovens, and knits. Specializing in colorwork and Fair Isle techniques, Sophie has recently begun writing knitting patterns for handknitters and finds the process hugely rewarding.

IG: [@sophieocheraknitwear](https://www.instagram.com/sophieocheraknitwear) | [#sophieocheraknitwear](https://www.instagram.com/sophieocheraknitwear)

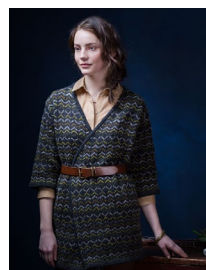
SUPPORT

We work hard to ensure our patterns are precise, thorough, and thoughtfully considered. If you get stuck, need help, or think you may have found an error in the pattern and want our technical team to check it out, please drop us a note at **support@brooklyntweed.com**.

YOU MIGHT ALSO LIKE



ARLECCHINO



TAPESTRY



COLLOMIA