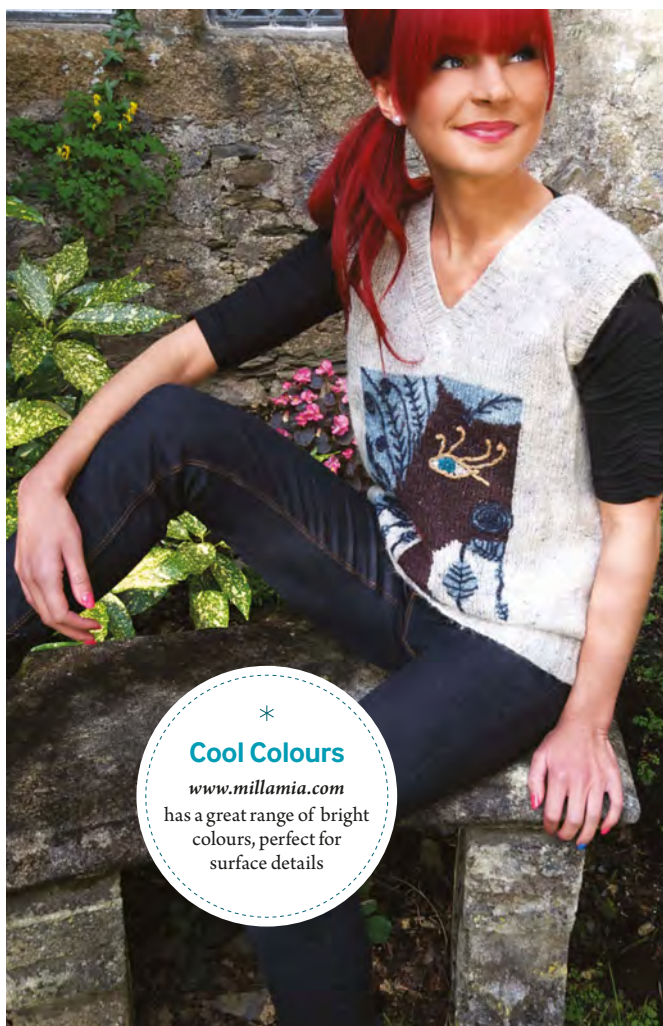


Glamour Tank

Who says Art is just for walls? Unleash your inner artist with intarsia and surface embroidery to make this unusual vest top



* Cool Colours

www.millamia.com

has a great range of bright colours, perfect for surface details



DESIGNER

Nicky Barfoot

A lifelong knitter, Nicky Barfoot is a visual artist who combines knitting with other artistic media such as drawing, painting, printing and photography. Her work questions conformity, gender and aesthetics, and blurs the boundaries

between high and low art, and between art and craft. Nicky has a City and Guilds (level 3) in Hand Knit Textiles and a Foundation Degree in Stitched Textiles. From her FdA degree show, Nicky's work was selected by the Embroiderers Guild for their 2012 Graduate Showcase at the Alexandra Palace Knitting and Stitching Show, where the Glamour Tank 1 was exhibited. More information on Nicky and her work can be found at www.nickybarfoot.wordpress.com.

“A woman's hair is her crowning glory! The Glamour series of tanks and sweaters is a light-hearted look at how western society defines femininity, presented in a modern update on the bold picture sweaters of the late 1970s/early 1980s.”

DIFFICULTY INTERMEDIATE

SKILLS USED

- Increasing & decreasing
- Colourwork (intarsia)
- Pick up & knit
- Knitting in rows & rounds
- Working from a chart
- Basic embroidery
- Seaming

YARN USED

Rowan, Felted Tweed DK

- 50% merino, 25% alpaca, 25% viscose
- 50g/175m/191yd

Main colour (MC):

Clay, shade 177

For the intarsia design:

CC1 Treacle, shade 145 (for the face)

CC2 Duck Egg, shade 173 (for the hair)

CC3 Rage, shade 150 (for the lips)

CC4 Watery, shade 152 (for the iris)

CC5 Gilt, shade 160 (for the eyelash embroidery)

CC6 Seafarer, shade 170 (for the hair embroidery)

EASE

- 8-13cm/3-5in positive ease

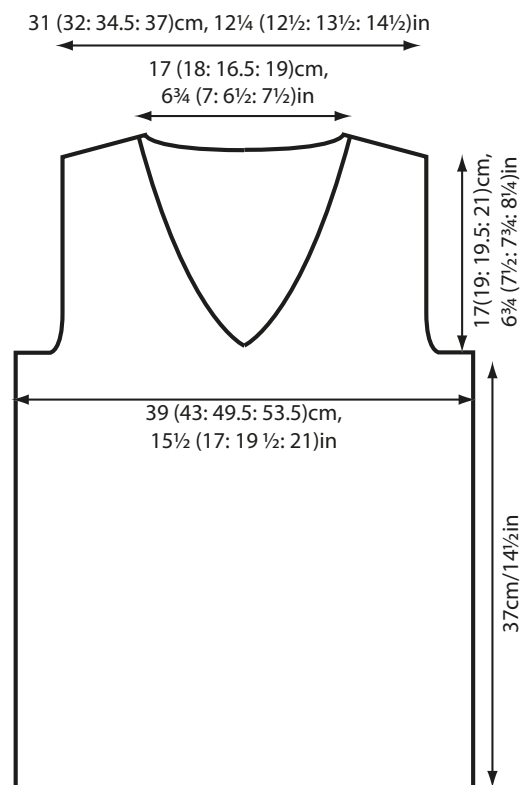
TENSION

- Work 20 sts and 29 rows in stocking stitch to measure 10x10cm/4x4in using 4mm (US 6) needles, or size required to obtain correct tension.

NOTIONS

- 3.25mm (US 3) circular needle, 40cm/16in
- 4mm (US 6) straight needles
- Stitch holder
- Stitch marker
- Tapestry needle
- Odds and ends (beads, buttons, etc) for embroidery and embellishment of intarsia chart

SCHEMATIC



PATTERN NOTES

To maintain the integrity of the chart, the pattern is limited to a smaller number of sizes than usually given in *Yarnwise*. However, if a larger size is desired, we recommend using larger needles and an aran weight yarn such as Rowan Felted Tweed Aran to obtain a gauge of 16 sts and 23 rows in 10x10cm/4x4in. With this gauge, follow instructions for the second, third, and fourth size to obtain a finished bust circumference of 110.5 (125.5: 136)cm or 43 1/2 (48 1/2: 53 1/2)in. If using aran yarn, it is recommended to work the Front first, as a larger chart will result in a longer minimum length before the armhole. Please note that the required metres/yards of yarn may be greater than given in the pattern.

Unless otherwise stated, the tank is worked completely in MC.

Intarsia Chart is worked in st st using colours as designated on chart. New colours are joined in at the appropriate point on the row and linked with the previous colour by twisting on the WS to avoid gaps.

BACK

Using 3.25mm (US 3) needles, cast on 78 (86: 98: 106) sts.

Row 1 (RS): K2, *p2, k2; rep from * to end.

Row 2: *P2, k2; rep from * to last 2 sts, p2.

Rep Rows 1-2 nine times more, inc 1 st at end of last

Finished bust	78	86.5	98.5	106.5	cm
	30¾	34	38¾	42	in
Length	56	58	58.5	60	cm
	22	22¾	23	23½	in
Main Colour (Clay)	3	3	4	4	balls
Total Metres	410	470	540	600	
Total Yards	448	514	591	656	
Hair (Duck Egg)	1				ball
Total Metres	35				m
Total Yards	39				yd
Face (Treacle)	1				ball
Total Metres	35				m
Total Yards	39				yd

Only very small amounts of other colours are used.

Cast
ON

CHART A



KEY

- CC2
- CC1
- MC
- CC3
- CC4



row. 20 rows total worked from cast on. 79 (87: 99: 107) sts

Change to 4mm (US 6) needles and, beg with a RS row, work in St st until back measures 37cm/14½in, ending after a WS row.

Shape armholes

Cast off 5 (5: 6: 6) sts at beginning of next 2 rows. 69 (77: 87: 95) sts

Dec 1 st at each end of next 2 (4: 5: 5) rows, then every RS row 1 (2: 3: 3) times, then every 4th row 1 (1: 2: 3) times. 61 (63: 67: 73) sts

Continue straight until armhole measures 17 (19: 19.5: 21)cm or 6¾ (7½: 7¾: 8¼)in, ending after a WS row.



Shape shoulders and back neck

Cast off 5 (5: 6: 6) sts at beginning of next 2 rows.
51 (53: 55: 61) sts.

Next row (RS): Cast off 5 (5: 6: 6) sts, knit until there are 8 (8: 9: 10) sts on RH needle and turn, leaving remaining sts of row on holder.

Working over these sts on needle only, cast off 4 sts at beginning of next WS row. 4 (4: 5: 6) sts rem

Cast off rem sts on next RS row.

With RS facing, rejoin yarn to remaining sts, cast off centre 25 (27: 25: 29) sts and knit to end.
Complete to match first side, reversing all shapings.

FRONT

Using 3.25mm (US 3) needles, cast on 78 (86: 98: 106) sts.

Row 1 (RS): K2, *p2, k2; rep from * to end.

Row 2: *P2, k2; rep from * to last 2 sts, p2.

Rep Rows 1-2 nine times more, inc 1 st at end of last row. 20 rows total worked from cast on.
79 (87: 99: 107) sts

Change to 4mm (US 6) needles and, beg with a RS row, work in st st for 4 rows.

Intarsia Chart Placement Row (RS): K18 (22: 28: 32), work Row 1 of Intarsia Chart over next 44 sts, k17 (21: 27: 31).

Next row (WS): P17 (21: 27: 31), work Row 2 of Intarsia Chart over next 44 sts, p18 (22: 28: 32).

Cont in est patt until Row 79 of Intarsia Chart is completed.

Continue in st st in MC until Front matches back to armhole shaping, ending after a WS row. With RS facing, place marker after first 39 (43: 49: 53) sts.

Note: Read ahead; armholes and neck are shaped at the same time.

Shape armholes

Cast off 5 (5: 6: 6) sts at beginning of next 2 rows. 69 (77: 87: 95) sts

Dec 1 st armhole edge(s) of next 2 (4: 5: 5) rows, then every RS row 1 (2: 3: 3) times, then every 4th row 1 (1: 2: 3) times.

Divide for left neck

AT THE SAME TIME, after Front measures 4 rows after beg of armhole, begin to shape neck as foll:

Next row (RS): Work to 4 sts before marker (including any armhole shaping), k2togtbl, k2, turn, leaving rem sts on holder.

Working all neck decreases as set by last row, dec 1



Stash It

ROWAN, FELTED
TWEED

is available at
www.hulucrafts.co.uk,
£5.95 for 50g

st at neck edge on every foll RS row 9 (9: 8: 9) times more, then every 4th row 6 (7: 7: 8) times more. 14 (14: 17: 18) sts rem

Continue straight until armhole measures 17(19: 19.5: 21)cm: 6¾ (7½: 7¾: 8¼)in, ending after a WS row.

Shape shoulder

Cast off 5 (5: 6: 6) sts at beg of next and foll RS row.

4 (4: 5: 6) sts rem

Work 1 row.

Cast off rem sts.

With RS facing, slip centre st onto a holder and rejoin yarn to rem sts, K2, k2tog, work to end (including any armhole shaping).

Complete to match first side, reversing all shapings.

FINISHING

Block and press according to instructions on ball band.
Weave in all ends.

Decorate the hair on the intarsia picture using simple embroidery sts, couching, beads, buttons



YARN REVIEW

Nicky says

"Rowan Felted Tweed DK is a wonderfully light and airy DK yarn. It blooms beautifully when washed and creates a lovely painterly effect when used for colourwork."

YARN ALTERNATIVES

- ◆ **SAVE**
New Lanark, Heather mixture DK
- ◆ **SPEND**
Knit Picks, City Tweed DK
- ◆ **SPOIL YOURSELF**
Bergere de France, Origin Alpaga

and anything else that takes your fancy. Add girly eyelashes, an earring (e.g. embroidery, a button, or perhaps a knitted flower if you want to go 3D). Put a necklace on her (e.g. french knots or beads). You could even make an i-cord in a contrasting colour and sew it in place. This is the fun bit; doodle with embroidery and make your tank really individual. However, do bear in mind that you will want to wash your tank so it is advisable to use the same yarn for the embroidery and any integral embellishments to avoid any puckering of the knitted fabric.

Once the decoration is complete, join both shoulder seams using mattress stitch.

Neckband

With RS facing and using 3.25mm (US 3) circular needle, starting at left shoulder seam, pick up and knit 52 (56: 60: 64) sts down left side of neck, knit 1 st from holder at centre front and mark this with a coloured thread, pick up and knit 52 (56: 60: 64) sts from right side of neck, then 34 (38: 34: 38) sts from back neck. Join to work in the round. 139 (151: 155: 167) sts

Rnd 1: *K2, p2; rep from * to 4 sts before marked st, k2, k2togtbl, knit marked st, k2tog, (k2, p2) to end.

Keeping rib correct, as set by Rnd 1, cont as folls:

Rnd 2: Rib to 2 sts before marked st, k2togtbl, knit marked st, k2tog, rib to end.

Rep round 2 seven more times.

Cast off in rib patt, continuing to decrease either side of marked st as set.

Armhole borders

With RS facing and using 3.25mm (US 3) needles, pick up and knit 94 (106: 114: 122) sts evenly around armhole.

Row 1: *K2, p2; rep from * to last 2 sts, k2.

Row 2: *P2, k2; rep from * to last 2 sts, p2.

Cont in set rib patt for 4 rows more.

Cast off on WS in rib.

Join side seams and weave in ends.

