

# Falling Leaves

DESIGN BY LOIS S. YOUNG

This classic sweater with raglan styling tells the story of autumn with an enhanced oak-leaf front panel and designer detail of a single motif on each sleeve.

SIZED TO  
**2X**





1 2 3 4 5 6 MODERATELY CHALLENGING

## Sizes

Woman's small (medium, large, X-large, 2X-large)

Instructions are given for smallest size, with larger sizes in parentheses. When only 1 number is given, it applies to all sizes.

## Finished Measurements

**Chest:** 34¾ (38½, 42¾, 47½, 49¾) inches

**Length:** 22¼ (24, 25¾, 27¼, 28¾) inches

## Materials

- Premier Yarns Deborah Norville Wool Naturals (worsted weight; 100% wool; 200 yds/100g per skein): 3 (3, 4, 4, 5) skeins oatmeal #2502 (MC) and 3 (3, 4, 4, 5) skeins chocolate #2505 (CC)
- Size 8 (5mm) 20-inch circular needle
- Size 10 (6mm) needles or size needed to obtain gauge
- Stitch markers



## Gauge

18 sts and 25 rows = 4 inches/10cm in St st with larger needles.  
28-st panel from Leaves Chart measures 5½ inches/14cm wide with larger needles.  
To save time, take time to check gauge.

### Designer's TIP

Row gauge is important for this piece. If you change the number of rows needed to complete the raglan yoke, be sure to make the same modification to the sleeve.

## Special Abbreviations

**Make 1 Left (M1L):** Insert LH needle from front to back under horizontal strand between last st worked and next st on LH needle; knit into back of resulting loop.

**Make 1 Right (M1R):** Insert LH needle from back to front under horizontal strand between last st worked and next st on LH needle; knit into front of resulting loop.

**Slip marker (sm):** Slip marker from LH to RH needle.

## Pattern Stitches

**Striped Rib** (in rows with even number of sts)

**Row 1 (RS):** With MC, \*k1, p1; rep from \* to end. Do not turn; slide sts to opposite end of needle, ready to work another RS row.

**Row 2 (RS):** With CC, \*k1, p1; rep from \* to end. Turn.

**Row 3 (WS):** With MC, \*k1, p1; rep from \* to end. Do not turn, slide sts to opposite end of needle.

**Row 4 (WS):** Rep Row 2.  
Rep Rows 1–4 for pat.

**Striped Rib** (in rnds with even number of sts)

**Rnd 1:** With MC, \*k1, p1; rep from \* to end.

**Rnd 2:** With CC, \*k1, p1; rep from \* to end.  
Rep Rnds 1 and 2 for pat.

## Pattern Notes

Waist shaping is worked on back only.

Work waist, raglan and neck decreases as follows: Ssk at beginning of right-side rows and k2tog at end of row.

Work increases as follows: K1, M1R at beginning of right-side rows and M1L, k1 at end of row.

Work charts using a combination of stranded stockinette stitch and intarsia.

## Back

With smaller needle and CC, cast on 80 (88, 98, 108, 114) sts.

Work 11 rows in Striped Rib. Cut CC.  
Change to larger needles.  
Continuing in MC, work 4 rows in St st

## Shape Waist

Dec 1 st each side on next row, then [every 4 rows] once more—76 (84, 94, 104, 110) sts.

Work 5 rows even.

Inc 1 st each side on next row, then [every 6 rows] once more—80 (88, 98, 108, 114) sts.

Work even until back measures 14 (15, 16, 17, 17½) inches, ending with a WS row.

## Shape Raglan

Bind off 8 (9, 11, 13, 13) sts at beg of next 2 rows—64 (70, 76, 82, 88) sts.

Work 6 rows even.

Dec 1 each side on next row, then [every RS row] 17 (19, 21, 23, 26) times.

Bind off rem 28 (30, 32, 34, 34) sts.

## Front

With smaller needle and CC, cast on 80 (88, 98, 108, 114) sts.

Work 11 rows in Striped Rib.  
Change to larger needles.

**Next row (RS):** With MC, k26 (30, 35, 40, 43), pm, work Leaves Chart over next 28 sts, pm, knit to end.

Working in pats as established, work even until piece measures 14 (15, 16, 17, 17½) inches, ending with a WS row. Pm on each side of center 20 sts.





### Shape Raglan & Neck

**Note:** Read next section before continuing as raglan and neck shaping occur simultaneously.

Bind off 8 (9, 11, 13, 13) sts at beg of next 2 rows—64 (70, 76, 82, 88) sts.

Work 6 rows even.

Dec 1 each side on next row, then [every RS row] 16 (18, 20, 22, 25) times.

At the same time, when 10 (11, 12, 13, 16) raglan decs have been worked [44 (48, 52, 56, 56) sts rem], continue to work raglan decs as established and work across to marker, join 2nd ball of yarn and bind off center neck sts, work to end.

Working both sides at once with separate balls of yarn, and continuing raglan decs, dec 1 st at each neck edge [every RS row] 4 (5, 6, 7, 7) times—1 st rem on each side when all shaping is complete.

Work 1 row even.

Fasten off.

### Right Sleeve

With smaller needle and CC, cast on 34 (36, 38, 40, 40) sts.

Work 16 rows in Striped Rib. Cut MC.

Change to larger needles.

Work 3 rows in St st, inc 4 sts evenly on first row—38 (40, 42, 44, 44) sts.

**Next row (WS):** P13 (14, 15, 16, 16), pm, p12, pm, purl to end.

### Shape Sleeve

**Note:** Read next section before continuing as sleeve shaping and chart motif occur simultaneously.

Continuing in St st, inc 1 st each side on next row, then [every 6 (4, 4, 4, 2) rows] 8 (1, 12, 19, 5) more time(s), then [every 8 (6, 6, 0, 4) rows] 2 (11, 4, 0, 17) times—60 (66, 76, 84, 90) sts.

At the same time, beg on first inc row, work to marker, sm, work Right Leaf Chart to marker, sm, work to end.

Work Rows 2–18 of chart; cut MC and work in CC across all sts.

When shaping is complete, work even until sleeve measures 16½ (17½, 18, 18½, 19) inches, ending with a WS row.

### Shape Cap

Bind off 8 (9, 11, 13, 13) sts at beg of next 2 rows—44 (48, 54, 58, 64) sts.

Work 6 rows even.





Dec 1 st each side [every RS row]  
17 (19, 21, 23, 26) times.  
Bind off rem 8 (8, 10, 10, 10) sts.

### Left Sleeve

Work same as for Right Sleeve, substituting Left Leaf Chart for Right Leaf Chart.

### Finishing

Block pieces to measurements. Sew raglan seams. Sew side and sleeve seams.

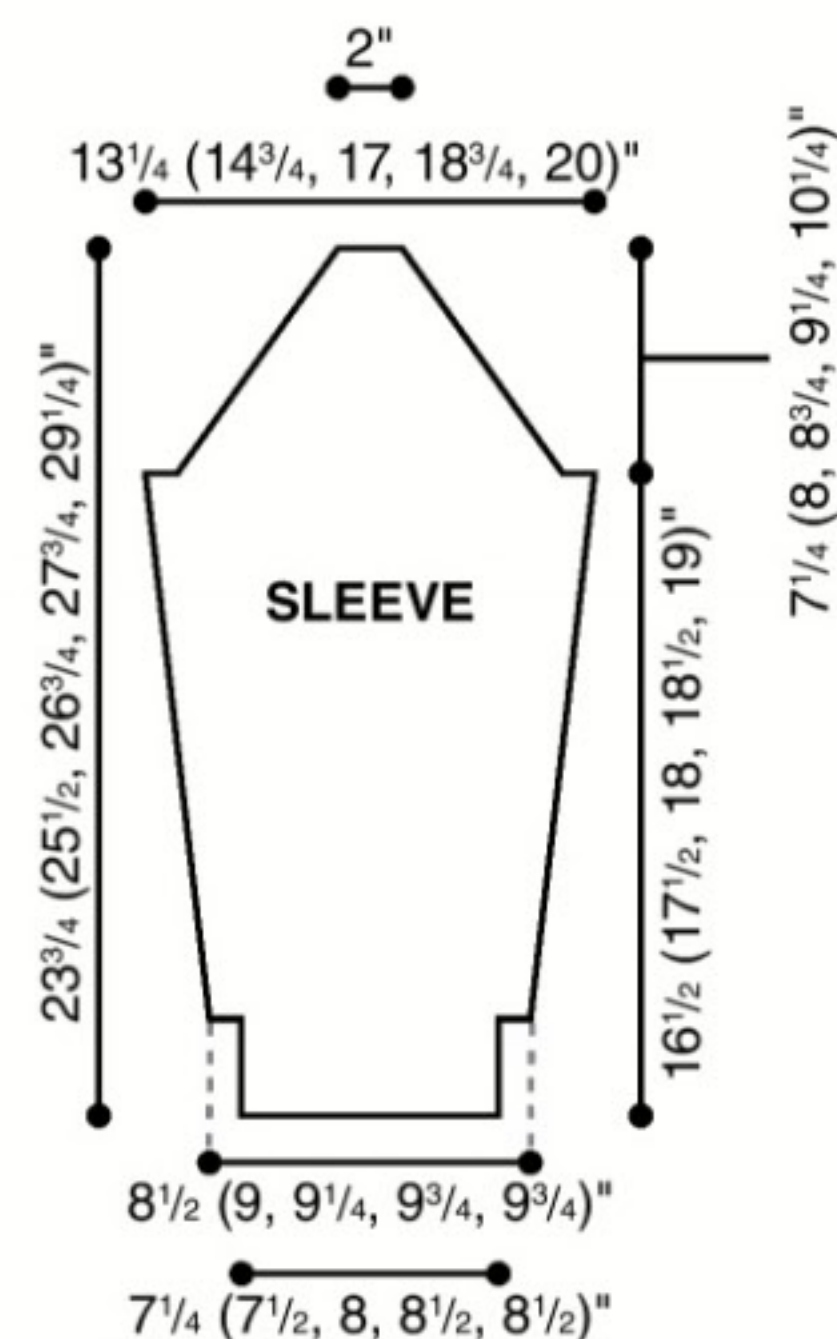
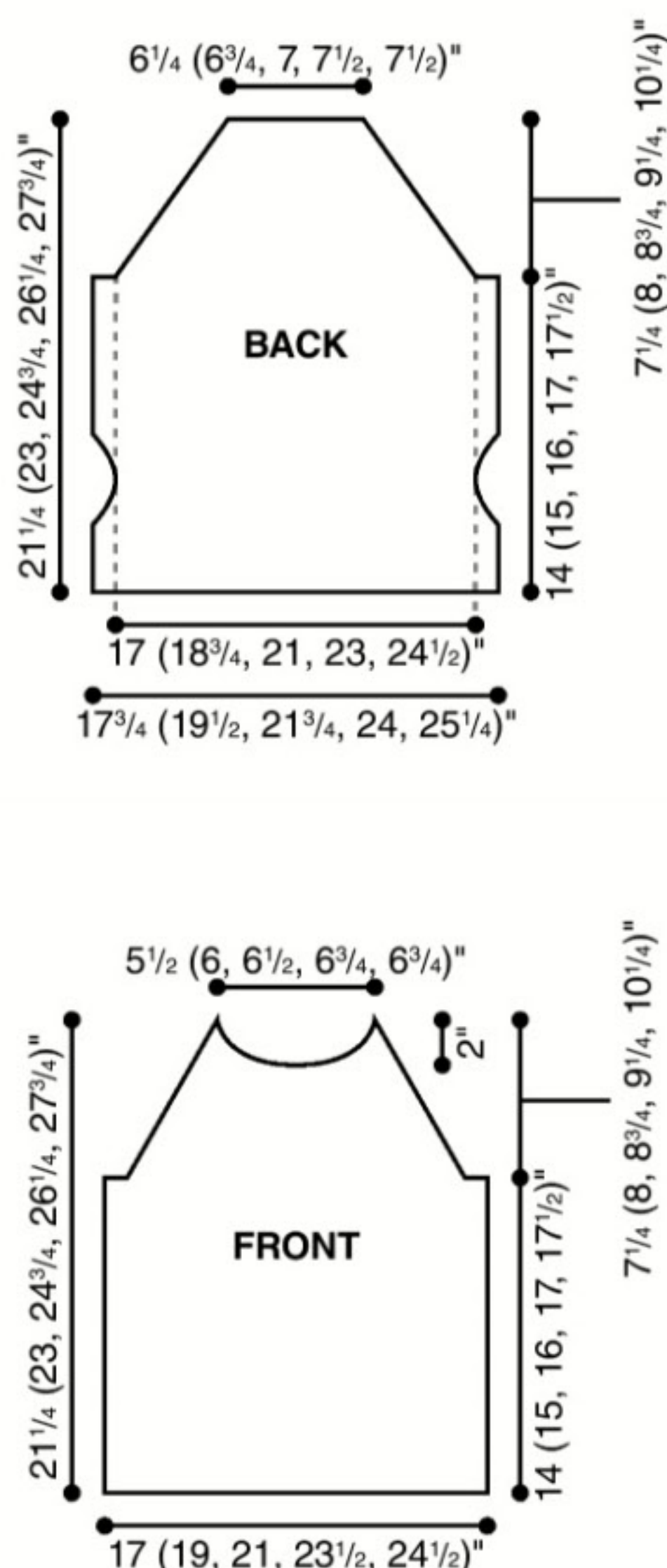
### Neckband

With smaller needle and CC, beg at right back seam, pick up and knit 28 (30, 32, 34, 34) sts across back neck edge, 8 (8, 10, 10, 10) sts across left sleeve, 38 (40, 42, 44, 44) sts along front neck edge, then 8 (8, 10, 10, 10) sts across right sleeve, pm and join to work in rnds—82 (86, 94, 98, 98) sts.

Work 6 rnds in Striped Rib.

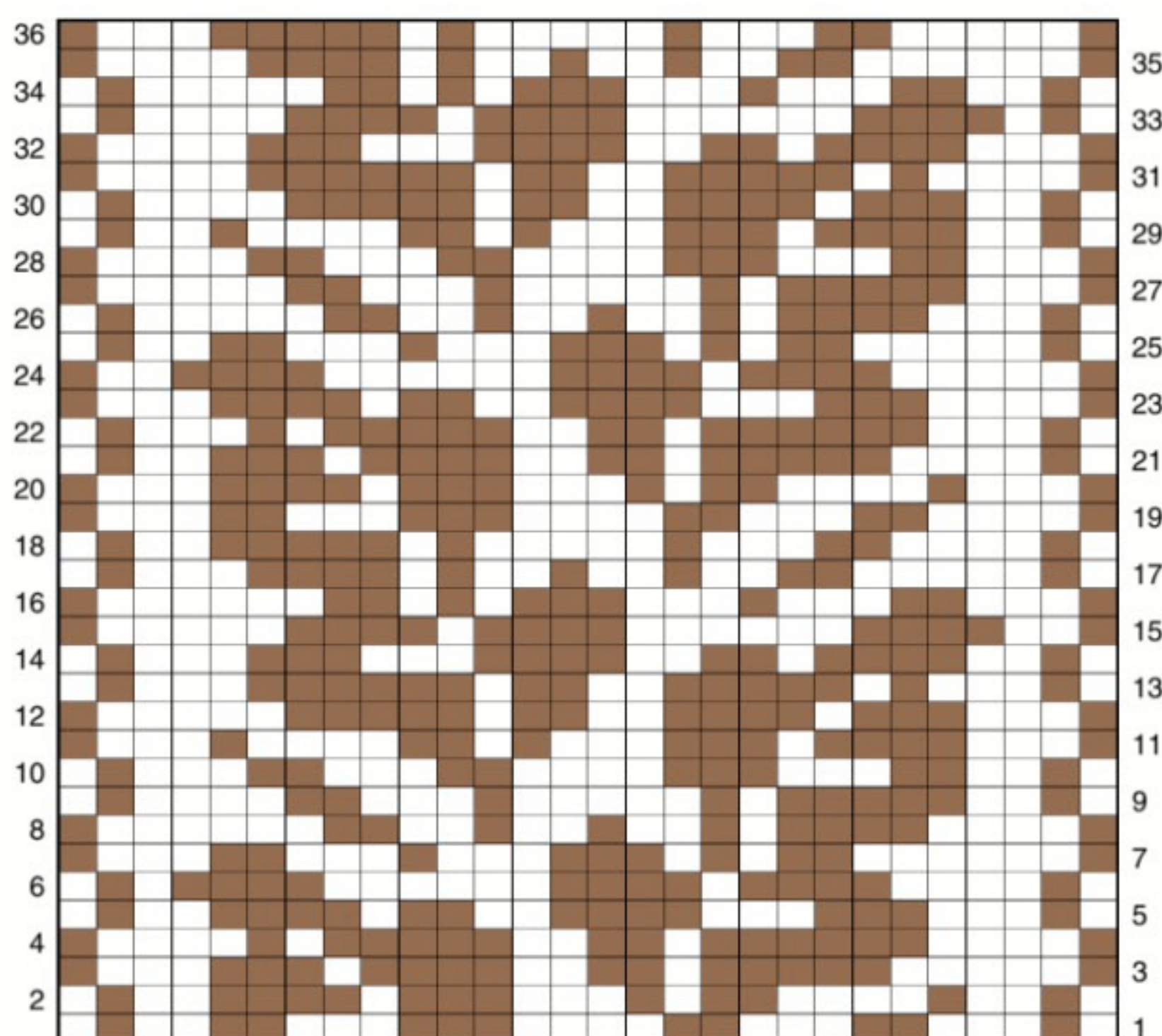
Using CC, bind off in rib.

Weave in all ends. ■

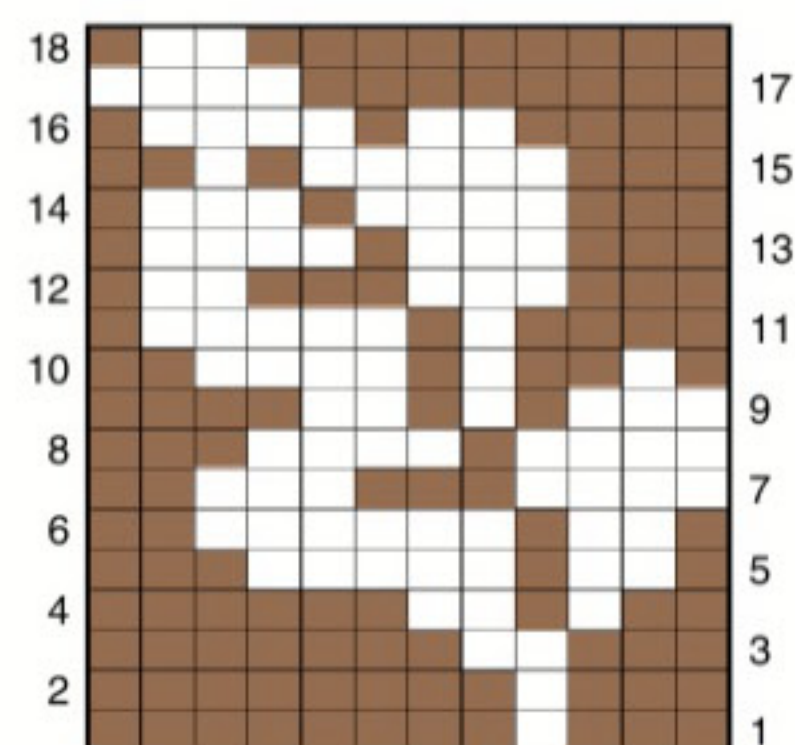


#### STITCH & COLOR KEY

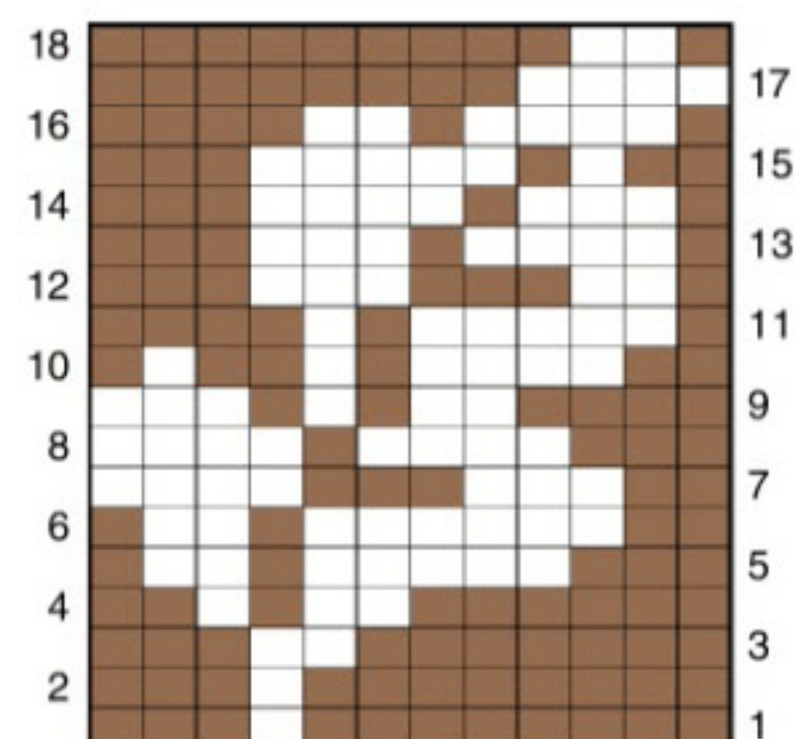
- MC—K on RS, p on WS
- CC—K on RS, p on WS



LEAVES CHART



LEFT LEAF CHART



RIGHT LEAF CHART