



MARTIN STOREY

easy  
fairisle  
knits

14 PROJECTS WITH  
A MODERN TWIST



*Easy Fairisle Knits*

First published in 2014 by  
Rowan Yarns/Coats Crafts UK  
Green Lane Mill  
Holmfirth  
HD9 2DX

Copyright © Berry & Co (Publishing) 2014

All rights reserved. No part of this publication  
may be recorded, stored in a retrieval system  
or transmitted in any form or by any means,  
electronic, electrostatic, magnetic tape,  
mechanical, photocopying, recording or  
otherwise, without the prior permission in  
writing from the publishers.

Created and produced by  
Berry & Co (Publishing) Ltd  
47 Crewys Road  
Childs Hill  
London NW2 2AU  
[www.berrypublishing.co.uk](http://www.berrypublishing.co.uk)

Designer: Anne Wilson  
Editor: Katie Hardwicke  
Pattern writer (and knitting): Penny Hill  
Pattern checker: Jill Gray  
Charts: Anne Wilson  
Stylist: Susan Berry  
Special photography (pages 5, 62-3, 64  
and back cover): Hazel Young

British Library Cataloguing in Publication Data  
A catalogue record of this book is available  
from the British Library.

ISBN 978-1-907544-87-3  
Printed in China

EDINBURGH LIBRARIES	
C0046891080	
Bertrams	18/08/2015
	£9.99
BH	TT825



# contents

introduction 4

## THE PROJECTS

little circles scarf 6, 34

little circles cushion 8, 35

paper dolls cushion 10, 36

simple spots cushion 12, 38

tree and ripple bag 14, 39

kitten and stripe scarf 16, 42

waves slipover 18, 44

plaid and diamond beanie 20, 48

plaid and diamond socks 22, 50

soft stripes gloves 24, 52

soft stripes beret 26, 54

nordic throw 28, 55

nordic cushion 30, 58

nordic garland 32, 60

useful information 62

acknowledgments 63

stockists 64





# introduction

When I was asked to create the designs for a book of patterns that made Fairisle both simple and contemporary, I jumped at the chance, because I love to work with colour and particularly enjoy the intricate but subtle effect you get when knitting with two colours in a row. In fact, I had fairly recently returned from a wonderful workshop in the Shetland Islands, which gave me lots of inspiration for this book.


Lots of people love the look of Fairisle patterns but assume it will be difficult to knit them. That is certainly true of some of the exquisite traditional Fairisle sweaters with lots of colour changes, but even a novice knitter would not find the patterns in this book hard to knit for three reasons: firstly the designs I have included are generally small; secondly the majority have no shaping (which can be harder to work in Fairisle); and thirdly they only employ two colours in a row, which is not hard to handle even for a novice knitter.

I have included quite a few cushions in the book, in part because I think the Fairisle patterns are a great addition to an otherwise plain sofa or chair, and also because once you get into the groove, they are very easy to work. You can then put several different patterned cushions together to great effect. The scarves are similarly easy to knit. Even the bag is not difficult because the Fairisle pattern is worked on a straight piece of knitting.

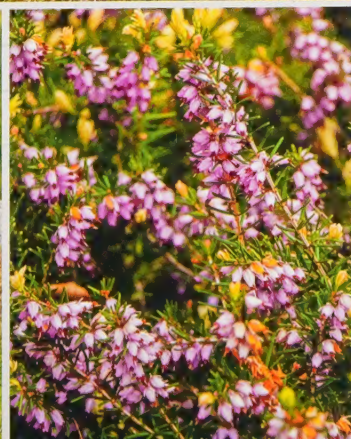
The socks, hats and slipover are a little more complicated but not much, because the Fairisle element is kept pretty simple and there is very little shaping to do at the points when the more complicated Fairisle pattern is involved. As an extra bit of fun, I have included a Nordic tree design for a cushion, throw and garland. The latter could be knitted quite easily even by a child!

I hope you have as much fun knitting the designs as I did creating them.

Martin X











# little circles scarf





# little circles cushion









paper dolls cushion









simple  
spots  
cushion









# tree and ripple bag













# kitten and stripe scarf





# waves slipover







# plaid and diamond beanie







plaid  
and  
diamond  
socks









soft stripes gloves...





...and soft stripes beret









# nordic throw





# nordic cushion











# nordic garland





# little circles scarf

## FINISHED SIZE

One size: 15cm/6in wide by 110cm/43½in long

## YARN

Rowan *Felted Tweed DK*

3 x 50g balls in Celadon 184 (A)

1 x 50g ball in each of Tawny 186 (B) and Mineral (C)

## NEEDLES

Pair each of 3.25mm (US 3) and 3.75mm (US 5) needles

## TENSION

23 sts and 32 rows to 10cm/4in square over St st using 3.75mm (US 5) needles, or size to obtain correct tension.

## ABBREVIATIONS

See page 63.

## NOTE

When working from Chart, odd numbered rows are knit rows and read from right to left. Even numbered rows are purl rows and read from left to right.

Use the Fairisle method, strand the yarn not in use across the wrong side of work, weaving them under and over the working yarn every 3 or 4 sts.

## TO MAKE (make 2 pieces)

Using 3.75mm (US 5) needles and A, cast on 72 sts.

Beg with a k row, work in St st and patt from Chart.

**Row 1** Using A, k to end.

**Row 2** Using A, p to end.

**Row 3** Work one st before patt rep, [work across 5-st patt rep] 14 times, work one st after patt rep.

**Row 4** Work one st before patt rep, [work across 5-st patt rep] 14 times, work one

st after patt rep.

Rows 3 and 4 set the Chart.

Work in patt to end of row 12.

**Rows 13 to 23** Rep rows 3 to 12 once, and row 3 again.

**Row 24** Using A, p to end.

**Row 25** Using A, k to end.

**Row 26** P2A, P[1C, 3A] to last 2 sts, 1C, 1A.

**Row 27** Using A, k to end.

**Row 28** Using A, p to end.

**Row 29** K[3A, 1C] to end.

Rows 24 to 29 form the spot patt.

Cont in spot patt until piece measures 55cm/21½in, ending with a plain row.

Leave sts on a spare needle.

## TO MAKE UP

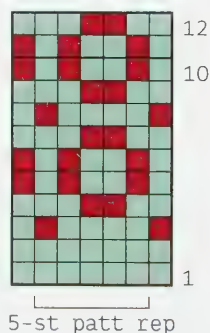
With needles pointing in the same direction, right sides together, using A cast off the sts of both pieces together. Join row ends of scarf together.

With seam running down centre of scarf, using 3.25mm (US 3) needles and C, working through both thicknesses pick up and k24 sts along one short end.

K 2 rows.

Cast off.

Work other end to match.



### KEY

■ Celadon 184 (A)  
■ Tawny 186 (B)

# little circles cushion

## FINISHED SIZE

38cm/15in by 38cm/15in to fit a 40cm/16in square cushion pad

## YARN

Rowan *Felted Tweed DK*

3 x 50g balls in Celadon 184 (A)

1 x 50g ball in each of Tawny 186 (B) and Mineral (C)

## NEEDLES

Pair of 3.75mm (US 5) knitting needles

## EXTRAS

40cm/16in cushion pad

## TENSION

23 sts and 32 rows to 10cm/4in square over St st using 3.75mm (US 5) needles, or size to obtain correct tension.

## ABBREVIATIONS

See page 63.

## NOTE

When working from Chart, odd numbered rows are knit rows and read from right to left. Even numbered rows are purl rows and read from left to right.

Use the Fairisle method, strand the yarn not in use across the wrong side of work weaving them under and over the working yarn every 3 or 4 sts.

## FRONT

Using 3.75mm (US 5) needles and A, cast on 92 sts.

**Row 1** Using A, k to end.

**Row 2** P2A, P[1C, 3A] to last 2 sts, 1C, 1A.

**Row 3** Using A, k to end.

**Row 4** Using A, p to end.

**Row 5** K[3A, 1C] to end.

**Row 6** Using A, p to end.

Rows 1 to 6 form the spot patt.

Work a further 43 rows, ending with row 1. Work in St st and patt from Chart on page 34.

**Row 50** Work one st before patt rep, [work across 5-st patt rep] 18 times, work one st after patt rep.

**Row 51** Work one st before patt rep, [work across 5-st patt rep] 18 times, work one st after patt rep.

Rows 50 and 51 set the Chart.

Work in patt to end of row 12, then rows 3 to 7.

**Rows 61 to 71** Rep rows 50 to 60 once, and row 50 again.

**Rows 72 to 120** Rep rows 1 to 6 eight times and row 1 again.

Using A, cast off.

## BACK

Using 3.75mm (US 5) needles and A, cast on 92 sts.

**Row 1** Using A, k to end.

**Row 2** P2A, P[1C, 3A] to last 2 sts, 1C, 1A.

**Row 3** Using A, k to end.

**Row 4** Using A, p to end.

**Row 5** K[3A, 1C] to end.

**Row 6** Using A, p to end.

Rows 1 to 6 form the spot patt.

**Rows 7 to 120** Rep rows 1 to 6 nineteen times more.

Using A, cast off.

## TO MAKE UP

With right sides together, sew back to front along three sides. Insert cushion pad, join rem side.



# paper dolls cushion

## FINISHED SIZE

38cm/15in by 38cm/15in to fit a 40cm/16in square cushion pad

## YARN

Rowan *Felted Tweed DK*

2 x 50g balls in Duck Egg 173 (A)

1 x 50g ball in each of Tawny 186 (B), Mineral 181 (C) and Hedgerow 187 (D)

## NEEDLES

Pair of 3.75mm (US 5) knitting needles

## EXTRAS

40cm/16in cushion pad

## TENSION

23 sts and 32 rows to 10cm/4in square over St st using 3.75mm (US 5) needles.

24 sts and 32 rows to 10cm/4in square over patt St St using 3.75mm (US 5) needles, or size to obtain correct tension.

## ABBREVIATIONS

See page 63.

## NOTE

When working from Chart, odd numbered rows are knit rows and read from right to left. Even numbered rows are purl rows and read from left to right.

Use the Fairisle method, strand the yarn not in use across the wrong side of work weaving them under and over the working yarn every 3 or 4 sts.

## FRONT

Using 3.75mm (US 5) needles and A, cast on 91 sts.

P 1 row.

Work in patt from Chart A.

**Row 1 (RS)** Work 2 sts before patt rep, then [work across 8-st patt rep] 11

times, work one st after patt rep.

**Row 2** Work one st before patt rep, [work across 8-st patt rep] 11 times, work 2 sts after patt rep.

These 2 rows set Chart A.

Work in patt to end of row 23.

Work in patt from Chart B.

**Row 1 (WS)** [Work across 7-st patt rep] 13 times.

**Row 2** [Work across 7-st patt rep] 13 times.

These 2 rows set Chart B.

Work in patt to end of row 9.

These 32 rows set the patt.

Work a further 87 rows, ending row 23 of Chart A.

Cast off.

## BACK

Using 3.75mm (US 5) needles and A, cast on 87 sts.

P 1 row.

Beg with a k row, work in St st and stripes of:

1 row A, 3 rows C, [3 rows A, 1 row B] 3 times, 3 rows A, = 15 rows.

3 rows C \*\*, [1 row A, 2 rows D] 3 times, 1 row A, = 10 rows.

These 32 rows form the stripe sequence, see photograph on page 37, left.

Work a further 86 rows, ending row at \*\*.

Work 1 row A.

Cast off.

## TO MAKE UP

With right sides together, sew back to front along three sides. Insert cushion pad, join rem side.

CHART A

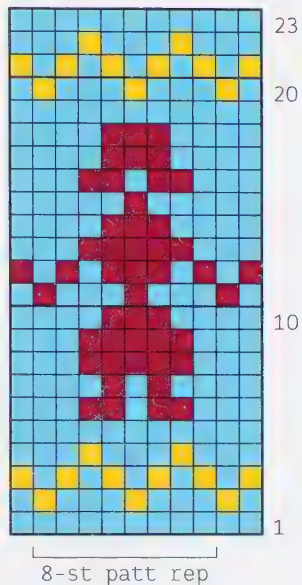
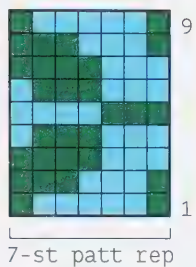


CHART B



KEY

- Duck Egg 173 (A)
- Tawny 186 (B)
- Mineral 181 (C)
- Hedgerow 187 (D)

Below The striped backs of the Paper Dolls Cushion (left) and the Simple Spots Cushion (right).





# simple spots cushion

## FINISHED SIZE

38cm/15in by 38cm/15in to fit a 40cm/16in square cushion pad

## YARN

Rowan *Felted Tweed DK*

1 x 50g ball in each of Frozen 185 (A), Cinnamon 175 (B), Avocado 161 (C), Tawny 186 (D) and Maritime 167 (E)

## NEEDLES

Pair of 3.75mm (US 5) knitting needles

## EXTRAS

40cm/16in cushion pad

## TENSION

23 sts and 32 rows to 10cm/4in square over St st using 3.75mm (US 5) needles.  
24 sts and 32 rows to 10cm/4in square over patt using 3.75mm (US 5) needles, or size to obtain correct tension.

## ABBREVIATIONS

See page 63.

## NOTE

When working from Chart, odd numbered rows are knit rows and read from right to left. Even numbered rows are purl rows and read from left to right.  
Use the Fairisle method, strand the yarn not in use across the wrong side of work weaving them under and over the working yarn every 3 or 4 sts.

## FRONT

Using 3.75mm (US 5) needles and A, cast on 91 sts.

P 1 row.

Work in patt.

**Row 1** Work 3 sts before patt rep, [work across 8-st patt rep] 11 times.

**Row 2** [Work across 8-st patt rep] 11

times, work 3 sts after patt rep.

These 2 rows set the Chart.

Work in patt to end of row 20.

These 20 rows set the patt.

Work a further 100 rows.

**Row 121** Using A, k to end.

Cast off.

## BACK

Using 3.75mm (US 5) needles and A, cast on 87 sts.

P 1 row.

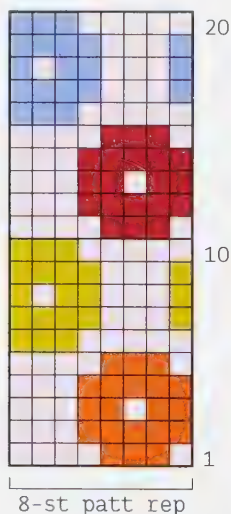
Beg with a k row, work in St st and stripes of [5 rows, B, 5 rows E, 5 rows D, 5 rows C] 6 times, see photograph on page 37, right.

**Row 121** Using A, k to end.

Cast off.

## TO MAKE UP

With right sides together, sew back to front along three sides. Insert cushion pad, join rem side.



## KEY

- Frozen 185 (A)
- Cinnamon 175 (B)
- Avocado 161 (C)
- Tawny 186 (D)
- Maritime 167 (E)

# tree and ripple bag

## FINISHED SIZE

Approx 30cm/11½in wide by 32cm/12½in deep

## YARN

Rowan *Felted Tweed DK*

2 x 50g balls in Clay 177 (A)

1 x 50g ball in each of Gilt 160 (B),

Celadon 184 (C), Damask 182 (D) and

Maritime 167 (E)

## NEEDLES

Pair each of 3.25mm (US 3) and 3.75mm (US 5) knitting needles

3.25mm (US 3) circular needle

Stitch holders

## EXTRAS

100cm/39in of 2.5cm/1in wide petersham ribbon

## TENSION

26 sts and 26 rows to 10cm/4in square patterned St st using 3.75mm (US 5) needles, or size to obtain correct tension.

## ABBREVIATIONS

See page 63.

## NOTE

When working from Chart, odd numbered rows are knit rows and read from right to left. Even numbered rows are purl rows and read from left to right.

Use the Fairisle method, strand the yarn not in use across the wrong side of work weaving them under and over the working yarn every 3 or 4 sts.

## BAG

### BACK AND FRONT (alike)

Using 3.75mm (US 5) needles and A, cast on 73 sts.

Work in patt from Chart A.

**Row 1** [Work across 12-st patt rep] 6 times, then work last st of Chart.

**Row 2** Work first st of Chart, then [work across 12-st patt rep] 6 times.

These 2 rows set the Chart.

Work in patt from Chart to end of row 20.

**Next row** K to end, inc one st at centre of row. 74 sts.

Work in patt from Chart B.

**Row 1** Work one st before patt rep, [work across 6-st patt rep] 12 times, then work one st after patt.

**Row 2** Work one st before patt rep, [work across 6-st patt rep] 12 times, then work one st after patt.

These 2 rows set the Chart.

Cont in patt to end of row 16, then rep rows 1 to 16 until piece measures approx 31cm/12in, ending on a p row in A.

Leave these sts on a holder.

### GUSSET (make 2)

Using 3.75mm (US 5) needles and A, cast on 19 sts.

Beg with a k row, work in St st until piece fits from halfway across cast-on edge, ending with a p row, inc one st at end of last row.

Mark each end of last row with a coloured thread.

Work in patt from Chart C.

**Row 1** K2A, work across 15 sts of Chart C, k2A.

**Row 2** P2A, work across 15 sts of Chart C, p2A.

These 2 rows set the Chart.

Work in patt from Chart to end of row 20.

**Next row** K to end, inc one st at centre of row. 20 sts.



Work in patt from Chart B.

**Row 1** Work one st before patt rep, [work across 6-st patt rep] 3 times, then work one st after patt.

**Row 2** Work one st before patt rep, [work across 6-st patt rep] 3 times, then work one st after patt.

These 2 rows set the Chart.

Cont in patt to end of row 16, then rep rows 1 to 16 until piece measures approx 31cm/12in from coloured threads, ending on a p row in A.

Leave these sts on a holder.

### HANDLES (make 2)

Using 3.75mm (US 5) needles and A, cast on 21 sts.

**Next row** K5, sl 1pw, k9, sl 1pw, k5.

### KEY

- Clay 177 (A)
- Gilt 160 (B)
- Celadon 184 (C)
- Damask 182 (D)
- Maritime 167 (E)

**Next row** P to end.

Rep the last 2 rows 64 times more.

Cast off.

### LINING

#### BACK AND FRONT (both alike)

Using 3.25mm (US 3) needles and A, cast on 74 sts.

Beg with a k row, cont in St st and stripes as folls:

[2 rows A, 2 rows C] 5 times, then [1 row A, 3 rows B, 1 row A, 3 rows D, 1 row A, 3 rows E, 1 row A, 3 rows C] until work measures same as main piece.

Leave these sts on a holder.

#### GUSSET (make 2)

Using 3.25mm (US 3) needles and A, cast on 18 sts.

Beg with a k row, work in St st until piece fits from halfway across cast-on edge, ending with a p row.

Beg with a k row, work in St st and stripes as folls:

[2 rows A, 2 rows C] 5 times, then [1 row A, 3 rows B, 1 row A, 3 rows D, 1 row A, 3 rows E, 1 row A, 3 rows C] until same

CHART A

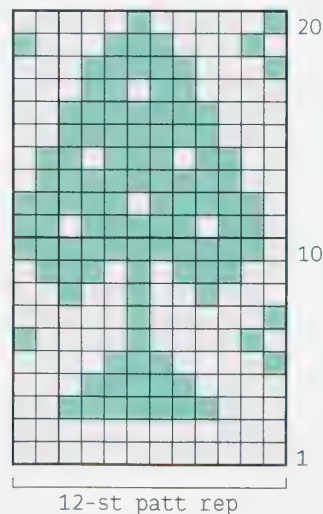


CHART B

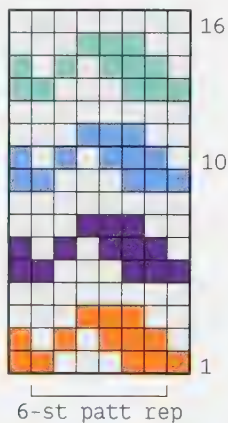
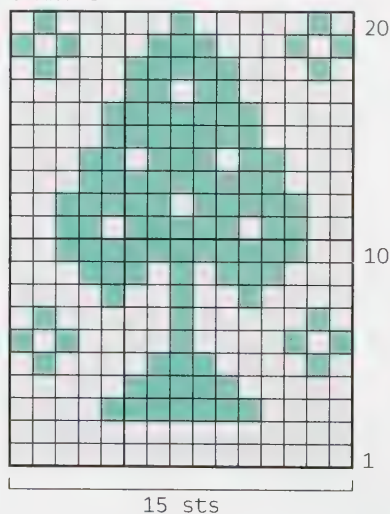


CHART C



number of 'stripes' have been worked as on main piece.  
Leave these sts on a holder.

#### TO MAKE UP

Join cast-on edges of gussets.

Sew row ends of gusset to row ends and cast-on edges of back and front. Make up lining in same way. With wrong sides together, place lining inside bag.

Using 3.25mm (US 3) needles and A, k together one st from bag and one st from lining all round top edge.

Work in rounds.

Next round P to end.

Next round K to end.

Rep the last 2 rounds twice more.

Cast off pwise.

Cut petersham ribbon in half. Place petersham ribbon along centre of wrong side of handle and slip stitch in place along knitted slipped sts. Bring row ends of handle together encasing petersham ribbon and sew row ends together to form seam. Sew handles in place to inside of bag. For extra stiffness in bottom of bag, cut a piece of cardboard to fit along the base.





# kitten and stripe scarf

## FINISHED SIZE

One size: approx 11cm/4½in wide by  
190cm/75in long

## YARN

Rowan *Felted Tweed DK*

2 x 50g balls in Scree 165 (A)

1 x 50g ball in each of Bilberry 151

(B), Avocado 161 (C), Ginger 154 (D) and  
Watery 152 (E)

## NEEDLES

Pair each of 3.25mm (US 3) and 3.75mm (US  
5) needles

## TENSION

23 sts and 32 rows to 10cm/4in square  
over St st using 3.75mm (US 5) needles,  
or size to obtain correct tension.

## ABBREVIATIONS

See page 63.

## NOTE

When working from Chart, odd numbered  
rows are knit rows and read from right  
to left. Even numbered rows are purl rows  
and read from left to right.

Use the Fairisle method, strand the yarn  
not in use across the wrong side of work  
weaving them under and over the working  
yarn every 3 or 4 sts.

## TO MAKE (make 2 pieces)

### FIRST PIECE

Using 3.25mm needles and B, cast on 58  
sts.

Beg with a k row, work in St st and  
stripes of 2 rows each B, A, C, A, D, A,  
E, A.

Change to 3.75mm (US 5) needles.

Work in patt from Chart.

**Row 1** K2A, [work across 7-st patt rep]  
8 times.

**Row 2** [Work across 7-st patt rep] 8  
times, p2A.

These 2 rows set Chart.

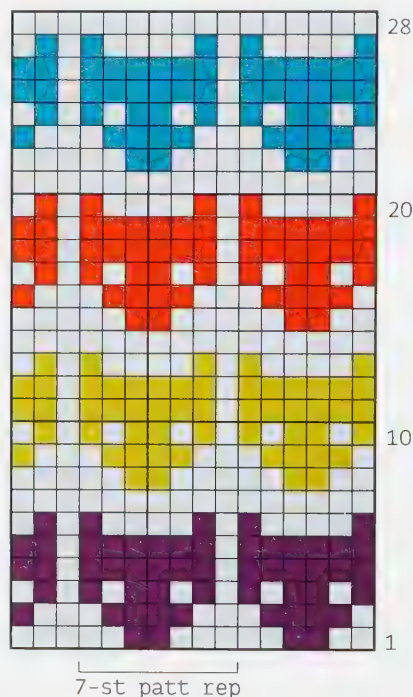
Work in patt to end of row 28.

Rep these 28 rows 7 times more, and rows  
1 to 27 once more.

Leave sts on a spare needle.

### SECOND PIECE

Using 3.25mm needles and B, cast on 58  
sts.



### KEY

- Scree 165 (A)
- Bilberry 151 (B)
- Avocado 161 (C)
- Ginger 154 (D)
- Watery 152 (E)

Beg with a k row, work in St st and stripes of 2 rows each B, A, C, A, D, A, E, A.

Change to 3.75mm (US 5) needles.

Work in patt from Chart.

**Row 1** K1A, [work across 7-st patt rep] 7 times, k1A.

**Row 2** P1A, [work across 7-st patt rep] 7 times, p1A.

These 2 rows set Chart.

Work in patt to end of row 28.

Rep these 28 rows 7 times more, and rows 1 to 20 again.

Leave sts on a spare needle.

#### TO MAKE UP

With needles pointing in the same direction, right sides together, using A cast off the sts of both pieces together.

Join row ends of scarf together.

Join cast-off edge and cast-on edge to form a tube.





# waves slipover

## FINISHED SIZE

### To fit bust

81-86	91-97	102-107	cm
32-34	36-38	40-42	in

## ACTUAL MEASUREMENTS

### Bust

90	100	110	cm
35½	39½	43½	in

### Length to shoulder

51	53	55	cm
20	21	21½	in

### Longer length to shoulder

56	58	60	cm
22	23	23½	in

## YARN

Rowan *Felted Tweed DK*

4(4:5) x 50g balls in Camel 157 (A)

1 x 50g ball in each of Ginger 154 (B)  
and Hedgerow 187 (C)

## NEEDLES

Pair each of 3.25mm (US 3) and 3.75mm (US 5) knitting needles

Stitch holders

## TENSION

30 sts and 28 rows to 10cm/4in square over patterned St st of Chart A using 3.75mm (US 5) needles, or size to obtain correct tension.

23 sts and 32 rows to 10cm/4in square over patterned St st of Chart B using 3.75mm (US 5) needles, or size to obtain correct tension.

## ABBREVIATIONS

See page 63.

## NOTE

When working from Chart, odd numbered rows are knit rows and read from right to left. Even numbered rows are purl rows and read from left to right.

Use the Fairisle method, strand the yarn not in use across the wrong side of work weaving them under and over the working yarn every 3 or 4 sts.

## BACK

Using 3.25mm (US 3) needles and A, cast on 103(115:127) sts.

**Row 1** K1, [p1, k1] to end.

**Row 2** P1, [k1, p1] to end.

Rep the last 2 rows 13 times more and row 1 again.

**Inc row** Rib 5(11:17), m1, [rib 3, m1] 31 times, rib 5(11:17).  
135(147:159) sts.

Change to 3.75mm (US 5) needles.

Cont in patt from Chart A.

**Row 1** Work 2 sts before patt rep, [work across 12-st patt rep] 11(12:13) times, work one st after patt rep.

**Row 2** Work one st before patt rep, [work across 12-st patt rep] 11(12:13) times, work 2 sts after patt rep.

These 2 rows set the Chart A.

Cont to work in patt from Chart A to end of row 29.

**Dec row** P4(10:16), p2tog, [p2, p2tog] 31 times, p5(11:17). 103(115:127) sts.  
Cont in patt from Chart B.

**Row 1** Work 4 sts before patt rep, [work across 12-st patt rep] 8(9:10) times, work 3 sts after patt rep.

**Row 2** Work 3 sts before patt rep, [work across 12-st patt rep] 8(9:10) times, work 4 sts after patt rep.

These 2 rows set Chart B.

Work in patt to end of row 6.

These 6 rows set the patt.

Work straight until back measures 31(32:33)cm/12(12½:13)in from cast-on edge, ending with a p row.

For longer length work 36(37:38)cm/14(14½:15)in from cast-on edge, ending with a p row.

## SHAPE ARMHOLES

Keeping patt correct:

Cast off 9(10:11) sts at beg of next 2 rows. 85(95:105) sts.

Next row K1, skpo, patt to last 3 sts, k2tog, k1.

Next row P1, p2tog, patt to last 3 sts, p2tog tbl, p1.

Rep the last 2 rows once more.

77(87:97) sts.

Next row K1, skpo, patt to last 3 sts, k2tog, k1.

Next row Patt to end.

Rep the last 2 rows 3(5:7) times more. 69(75:81) sts.

Next row K1, skpo, patt to last 3 sts, k2tog, k1.

Work 3 rows.

Next row K1, skpo, patt to last 3 sts, k2tog, k1. 65(71:77) sts.

Work straight until back measures 49(51:53)cm/19½(20:21)in from cast-on edge, ending with a p row.

For longer length work straight until back measures 54(56:58)cm/21½(22:23)in from cast-on edge, ending with a p row.

## SHAPE SHOULDERS AND BACK NECK

Cast off 5(6:7) sts at beg of next 2 rows.

Next row Cast off 5(6:7) sts, patt until there are 10 sts on the needle, turn and work on these sts for first side of neck.

Next row Cast off 4 sts, patt to end.

Cast off rem 6 sts.

With right side facing, slip centre 25(27:29) sts on a holder, rejoin yarn to rem sts, patt to end.

Next row Cast off 5(6:7) sts, patt to end.

Next row Cast off 4 sts, patt to end.

Cast off rem 6 sts.

## FRONT

Work as given for Back until front is 8 rows less than back to armhole shaping, ending with a p row.

## SHAPE FRONT NECK

Keeping patt correct:

Next row Patt 48(54:60), k2tog, k1, turn

CHART A

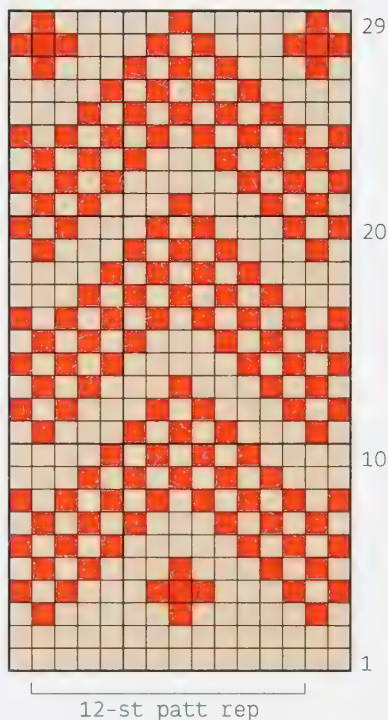
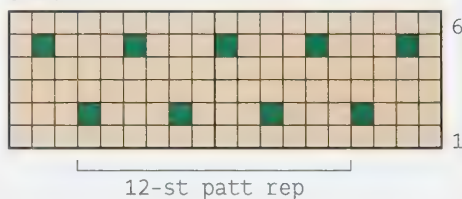


CHART B



## KEY

- Camel 157 (A)
- Ginger 154 (B)
- Hedgerow 187 (C)



and work on these sts.

Work 3 rows.

**Next row** Patt to last 3 sts, k2tog, k1.

Work 3 rows.

#### SHAPE ARMHOLE

**Next row** Cast off 9(10:11) sts, patt to last 3 sts, k2tog, k1. 39(44:49) sts.

**Next row** Patt to end.

**Next row** K1, skpo, patt to end.

**Next row** Patt to last 3 sts, p2tog tbl, p1.

**Next row** K1, skpo, patt to last 3 sts, k2tog, k1.

**Next row** Patt to last 3 sts, p2tog tbl, p1. 34(39:44) sts.

**Next row** K1, skpo, patt to end.

**Next row** Patt to end.

**Next row** K1, skpo, patt to last 3 sts, k2tog, k1.

**Next row** Patt to end.

Rep the last 4 rows 1(2:3) time(s) more. 28(30:32) sts.

**Next row** K1, skpo, patt to end.

**Next row** Patt to end.

**Next row** Patt to last 3 sts, k2tog, k1.

**Next row** Patt to end.

**Next row** K1, skpo, patt to end.

25(27:29) sts.

Keeping armhole edge straight, cont to dec at neck edge on every 2nd and 4th row until 16(18:20) sts rem.

Work straight until front measures the same as back to shoulder shaping, ending at armhole edge.

#### SHAPE SHOULDER

**Next row** Cast off 5(6:7) sts at beg of next and foll right side row.

Work 1 row.

Cast off rem 6 sts.

With right side facing, place centre st on a safety pin, rejoin yarn to rem sts, k1, skpo, patt to end.

Work 3 rows.

**Next row** K1, skpo, patt to end.

Rep the last 4 rows once more.

#### SHAPE ARMHOLE

**Next row** Cast off 9(10:11) sts, patt to

end. 39(44:49) sts.

**Next row** Patt to last 3 sts, k2tog, k1.

**Next row** P1, p2tog, patt to end.

**Next row** K1, skpo, patt to last 3 sts, k2tog, k1.

**Next row** P1, p2tog, patt to end.

34(39:44) sts.

**Next row** Patt to last 3 sts, k2tog, k1.

**Next row** Patt to end.

**Next row** K1, skpo, patt to last 3 sts, k2tog, k1.

**Next row** Patt to end.

Rep the last 4 rows 1(2:3) time(s) more. 28(30:32) sts.

**Next row** Patt to last 3 sts, k2tog, k1.

**Next row** Patt to end.

**Next row** K1, skpo, patt to end.

**Next row** Patt to end.

**Next row** Patt to last 3 sts, k2tog, k1. 25(27:29) sts.

Keeping armhole edge straight, cont to dec at neck edge on every 2nd and 4th row until 16(18:20) sts rem.

Work straight until front measures the same as back to shoulder shaping, ending at armhole edge.

#### SHAPE SHOULDER

**Next row** Cast off 5(6:7) sts at beg of next and foll wrong side row.

Work 1 row.

Cast off rem 6 sts.

#### NECKBAND

Join right shoulder seam.

With right side facing, using 3.25mm (US 3) needles and A, pick up and k56(58:60) sts down left side of front neck, k1 st from safety pin, pick up and k56(58:60) sts up right side of front neck, 8 sts down right side of back neck, k across 25(27:29) sts from back neck holder, pick up and k7 sts up left side of back neck. 153(159:165) sts.

**Next row** P1, [k1, p1] to end.

This row sets the rib.

**Next row** Rib 54(56:58), k2tog, k1, skpo, rib to end.

Rib 1 row.

**Next row** Rib 53(55:57),  
k2tog, k1, skpo, rib to  
end.

Rib 1 row.

**Next row** Rib 52(54:56),  
k2tog, k1, skpo, rib to  
end.

Rib 1 row.

Cast off in rib,  
decreasing on this row as  
before.

#### ARMBANDS (both alike)

Join shoulder seams. Join  
left shoulder and neckband  
seam.

With right side facing,  
using 3.25mm (US 3)  
needles and A, pick up and  
k123(129:135) sts evenly  
round armhole edge.

Work 7 rows rib as given  
for Back.

Cast off in rib.

#### TO MAKE UP

Join side and armband  
seams.





# plaid and diamond beanie

## FINISHED SIZE

To fit an average-sized man's head

## YARN

Rowan *Felted Tweed DK*

1 x 50g ball in each of Clay 177 (A),  
Carbon 159 (B) and Cinnamon 175 (C)

## NEEDLES

Pair each of 3.75mm (US 5) and 4mm  
(US 6) knitting needles

## TENSION

22 sts and 30 rows to 10cm/4in over St  
st using 4mm (US 6) needles, or size to  
obtain correct tension.

## ABBREVIATIONS

See page 63.

## NOTE

When working from Chart, odd numbered  
rows are knit rows and read from right  
to left. Even numbered rows are purl rows  
and read from left to right.

Use the Fairisle method, strand the yarn  
not in use across the wrong side of work  
weaving them under and over the working  
yarn every 3 or 4 sts.

## TO MAKE

Using 3.75mm (US 5) needles and A, cast  
on 138 sts.

**Rib row** [K1, p1] to end.

Rep the last row 9 times more.

Change to 4mm (US 6) needles and work in  
patt from Chart A.

**Row 1** Work first st of patt rep, then  
[work 34-st patt rep] 4 times, work one  
st after patt rep.

**Row 2** Work first st of patt rep, then  
[work 34-st patt rep] 4 times, work one  
st after patt rep.



CHART A

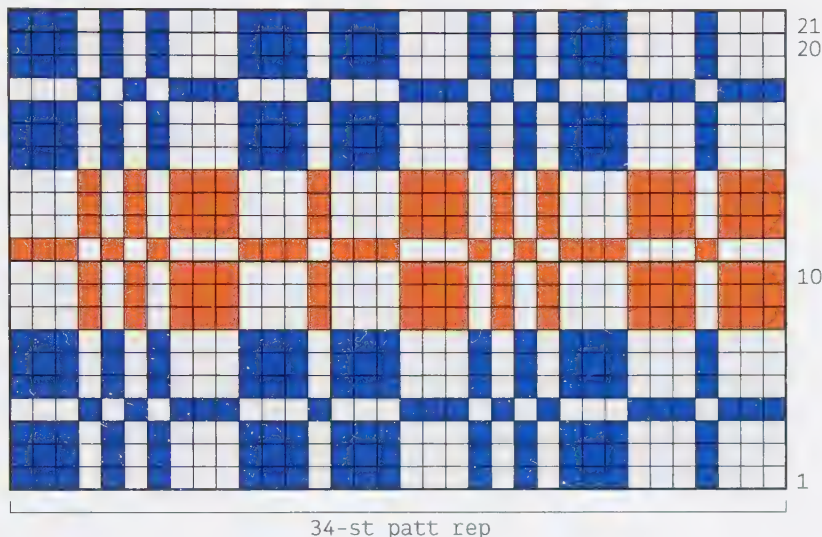
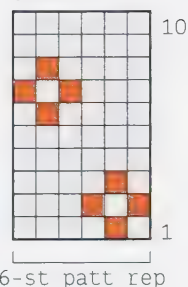


CHART B



## KEY

- Clay 177 (A)
- Carbon 159 (B)
- Cinnamon 175 (C)

These 2 rows set the patt.

Cont in patt to end of row 21.

**Row 22** Using A, p8, p2tog, [p6, p2tog] 15 times, p8. 122 sts.

Work in patt from Chart B.

**Row 1** Work first st of patt rep, then [work 6-st patt rep] 20 times, work one st after patt rep.

**Row 2** Work first st of patt rep, then [work 6-st patt rep] 20 times, work one st after patt rep.

Work from Chart until row 10.

These 10 rows set the patt.

Cont in patt until hat measures

16cm/6¼in, ending after a wrong side row.

Cont in A only.

#### SHAPE CROWN

**Row 1** K1, [skpo, k6] 15 times, k1. 107 sts.

**Row 2** P to end.

**Row 3** K1, [skpo, k5] 15 times, k1. 92 sts.

**Row 4** P to end.

**Row 5** K1, [skpo, k4] 15 times, k1. 77 sts.

**Row 6** P to end.

**Row 7** K1, [skpo, k3] 15 times, k1. 62 sts.

**Row 8** P to end.

**Row 9** K1, [skpo, k2] 15 times, k1. 47 sts.

**Row 10** P to end.

**Row 11** K1, [skpo, k1] 15 times, k1. 32 sts.

**Row 12** P to end.

**Row 13** K1, [skpo] 15 times, k1. 17 sts.

**Row 14** P to end.

**Row 15** K2, [skpo] 7 times, k1. 10 sts.

Leaving a long end, cut off yarn and thread through rem sts.

#### TO MAKE UP

Join back seam.



# plaid and diamond socks

## FINISHED SIZE

To fit shoe size UK 9-10/EUR 43-44/US 10-11

## YARN

Rowan *Felted Tweed DK*

2 x 50g balls in Clay 177 (A)

1 x 50g ball in each of Carbon 159 (B) and Cinnamon 175 (C)

## NEEDLES

Set of 4 double-pointed 3.75mm (US 5) knitting needles

## TENSION

23 sts and 32 rows to 10cm/4in square over St st using 3.75mm (US 5) needles, or size to obtain correct tension.

## ABBREVIATIONS

See page 63.

## NOTE

When working from Chart, all rows are knit rows and read from right to left.

Use the Fairisle method, strand the yarn not in use across the wrong side of work weaving them under and over the working yarn every 3 or 4 sts.

## SOCKS (make 2)

Using 3.75mm (US 5) needles and A, cast on 54 sts.

Arrange these sts on 3 needles and cont in rounds.

**Rib round** [K1, p1] to end.

Rib a further 8 rounds.

**Inc round** Rib 2, m1, [rib 4, m1] to end.  
68 sts

**Round 1** [Work 34-st patt rep 1st row of Chart A on page 49] twice.  
This round sets the Chart.

Cont in patt to end of round 21.

**Round 22** K to end, dec 2 sts evenly.  
66 sts.

Work in patt from Chart B on page 49.

**Round 1** [Work 6 st patt rep] 11 times.

Work from Chart until round 10.

These 10 rounds set patt.

Cont in patt until work measures

30cm/12in from cast-on edge, ending with a plain round.

Cont in A only.

Break off yarn.

Divide sts onto 3 needles as folls: slip first 18 sts onto first needle, next 15 sts onto second needle and next 15 sts onto 3rd needle, slip last 18 sts onto other end of first needle.

## SHAPE HEEL

With right side facing, join yarn to 36 sts on first needle.

Work on these 36 sts only.

Working backwards and forwards in rows, not rounds, work as folls:

Beg with a k row, work 20 rows St st.

**Next row** K26, skpo, turn.

**Next row** Sl 1, p16, p2tog, turn.

**Next row** Sl 1, k16, skpo, turn.

**Next row** Sl 1, p16, p2tog, turn.

Rep the last 2 rows 7 times more.

18 sts.

Break off yarn.

Reset sts on 3 needles as follows: slip first 9 sts of heel sts onto a safety-pin, place marker here to indicate beg of round. Join A to rem sts, with first needle k9, then pick up and 14 sts along side of heel, with second needle k30, with 3rd needle pick up and k14 sts along other side of heel, k9 from safety-pin.  
76 sts.

Cont in rounds.

K 1 round.

**Dec round** K23, k2tog, k26, k2tog tbl, k23. 74 sts.

K 1 round.

**Dec round** K22, k2tog, k26, k2tog tbl, k22. 72 sts.

K 1 round.

**Dec round** K21, k2tog, k26,  
k2tog tbl, k21. 70 sts.

K 1 round.

**Dec round** K20, k2tog, k26,  
k2tog tbl, k20. 68 sts.

K 1 round.

**Dec round** K19, k2tog, k26,  
k2tog tbl, k19. 66 sts.

K 1 round.

**Dec round** K18, k2tog, k26,  
k2tog tbl, k18. 64 sts.

K 1 round.

Cont in rounds of St  
st until sock measures  
21cm/8½in from back of  
heel.

#### SHAPE TOE

**Next round** K13, k2tog,  
k2, skpo, k26, k2tog, k2,  
skpo, k13. 60 sts.

**Next round** K to end.

**Next round** K12, k2tog,  
k2, skpo, k24, k2tog, k2,  
skpo, k12. 56 sts.

**Next round** K to end.

**Next round** K11, k2tog,  
k2, skpo, k22, k2tog, k2,  
skpo, k11. 52 sts.

**Next round** K to end.

Cont in rounds decreasing  
on every alt round as set  
until the foll round has  
been worked.

**Next round** K5, k2tog,  
k2, skpo, k10, k2tog, k2,  
skpo, k5. 28 sts.

Slip first 7 sts onto one  
needle, next 14 sts onto a  
second needle, then rem 7  
sts on end of first needle.  
Fold sock inside out and  
cast one st from each  
needle off together.





# soft stripe gloves

## FINISHED SIZE

To fit an average-sized woman's hand

## YARN

Rowan *Felted Tweed DK*

2 x 50g balls in Clay 177 (A)

1 x 50g ball in each of Gilt 160 (B),  
Seasalter 178 (C), Duck Egg 173 (D) and  
Celadon 184 (E)

## NEEDLES

Pair each of 3.25mm (US 3) and 3.75mm  
(US 5) knitting needles

## TENSION

23 sts and 32 rows to 10cm/4in square  
over St st using 3.75mm (US 5) needles,  
or size to obtain correct tension.

## ABBREVIATIONS

See page 63.

## NOTE

When working from Chart, odd numbered  
rows are knit rows and read from right  
to left. Even numbered rows are purl rows  
and read from left to right.

Use the Fairisle method, strand the yarn  
not in use across the wrong side of work  
weaving them under and over the working  
yarn every 3 or 4 sts.

## RIGHT GLOVE

**\*\*** Using 3.25mm (US 3) needles and A,  
cast on 52 sts.

**Rib row** [K1, p1] to end.

**\*** Rep the last row twice more, dec one st  
at centre of last row. 51 sts.

Change to 3.75mm needles and work in St  
st and patt from Chart.

**Row 1** Work 2 sts before patt rep, then  
[work 6-st patt rep] 8 times, work one st  
after patt rep.

**Row 2** Work one st before patt rep, then

[work 6-st patt rep] 8 times, work 2 sts  
after patt rep.

These 2 rows set the patt.

Cont in patt to end of row 17, dec one st  
at centre of last row. 50 sts.

**Row 18** Using A, p to end.

**Row 19** Using A, k to end.

**Row 20** Using A, k to end to mark hemline.  
Change to 3.25mm (US 3) needles.

Beg with a p row, cont in St st and  
stripes of 2 rows A, then 3 rows E and 3  
rows A.

Work a further 17 rows, ending with a p  
row.

Change to 3.75mm (US 5) needles.

Work a further 12 rows **\*\***.

## THUMB SHAPING

**Next row** K25, m1, k3, m1, k to end.

Work 3 rows.

**Next row** K25, m1, k5, m1, k to end.

Work 1 row.

**Next row** K25, m1, k7, m1, k to end.

Work 1 row.

**Next row** K25, m1, k9, m1, k to end.

Work 1 row. 58 sts.

Cont to inc as set on every right side  
row until there are 64 sts on needle.

Work 1 row.

## Divide for thumb

**Next row** K42, turn.

**Next row** P17, turn.

Cont in A only.

Work 16 rows in St st.

**Next row** K1, [k2tog] to end. 9 sts.

Break yarn, thread through rem sts, draw  
up tightly and join seam.

With RS facing, join yarn to base of  
thumb, k to end. 47 sts.

Work 15 rows.

Cont in A only.

**\*\*\* Divide for fingers**

## FIRST FINGER

**Next row** K30, turn and cast on 2 sts.

**Next row** P15, turn.

Work 20 rows in St st.

**Next row** K1, [k2tog] to end. 8 sts.

Break yarn, thread through rem sts, draw up tightly and join seam.

#### SECOND FINGER

With RS facing, join yarn to base of first finger, pick up and k2 sts from base of first finger, k6, turn, cast on 2 sts.

**Next row** P16, turn.

Work 24 rows in St st.

**Next row** [K2tog] to end. 8 sts.

Break yarn, thread through rem sts, draw up tightly and join seam.

#### THIRD FINGER

With RS facing, join yarn to base of second finger, pick up and k2 sts from base of second finger, k6, turn, cast on 2 sts.

**Next row** P16, turn.

Work 20 rows in St st.

**Next row** [K2tog] to end. 8 sts.

Break yarn, thread through rem sts, draw up tightly and join seam.

#### FOURTH FINGER

With RS facing, join yarn to base of third finger, pick up and k2 sts from base of third finger, k5, turn.

**Next row** P12.

Work 14 rows in St st.

**Next row** [K2tog] to end. 6 sts.

Break yarn thread through rem sts, draw up tightly and join seam.

#### LEFT GLOVE

Work as given for Right Glove from \*\* to

#### THUMB SHAPING

**Next row** K22, m1, k3, m1, k to end.

Work 3 rows.

**Next row** K22, m1, k5, m1, k to end.

Work 1 row.

**Next row** K22, m1, k7, m1, k to end.

Work 1 row.

**Next row** K22, m1, k9, m1, k to end.

Work 1 row.

Cont to inc as set on every right side row until there are 64 sts on needle.

Work 1 row.

**Divide for thumb**

**Next row** K39, turn.

**Next row** P17 sts, turn.

Cont in A only.

Work 16 rows in St st.

**Next row** K1, [k2tog] to end. 9 sts.

Break yarn, thread through rem sts, draw up tightly and join seam.

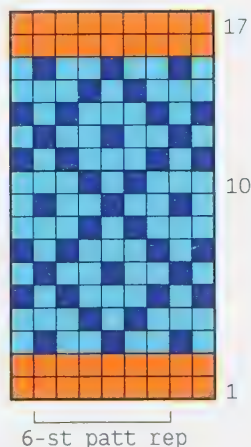
With RS facing, join yarn in correct colour to base of thumb, k to end.

47 sts.

Work 15 rows.

Cont in A only.

Complete as for Right Glove from \*\*\* to end.



#### KEY

- Gilt 160 (B)
- Seasalter 178 (C)
- Duck Egg 173 (D)



# soft stripe beret

## FINISHED SIZE

To fit an average-sized woman's head

## YARN

Rowan *Felted Tweed DK*

1 x 50g ball in each of Clay 177 (A),  
Gilt 160 (B) Seasalter 178 (C), Duck Egg  
173 (D) and Celadon 184 (E)

## NEEDLES

Pair each of 3.75mm (US 5) and 4mm  
(US 6) knitting needles

## TENSION

22 sts and 30 rows to 10cm/4in over  
patterned St st using 4mm (US 6) needles,  
or size to obtain correct tension.

## ABBREVIATIONS

See page 63.

## TO MAKE

Using 3.75mm (US 5) needles and A, cast  
on 111 sts.

**Rib row 1** K1, [p1, k1] to end.

**Rib row 2** P1, [k1, p1] to end.

Rep the last 2 rows twice more and the  
first row again.

**Inc row (WS)** Rib 3, [m1, rib 3] to end.  
147 sts.

Change to 4mm (US 6) needles and work in  
St st and patt from Chart on page 53.

**Row 1** Work 2 sts before patt rep, then  
[work 6-st patt rep] 24 times, work one  
st after patt rep.

**Row 2** Work first st before patt rep, then  
[work 6-st patt rep] 24 times, work 2 sts  
after patt rep.

These 2 rows set the patt.

Cont in patt to end of row 17.

Cont in St st and stripes of 3 rows A and  
3 rows E as folls:

**Row 18** Using A, p to end, dec one st at  
centre of row. 146 sts.

Work 30 rows.

## SHAPE CROWN

**Row 1** K1, [skpo, k10] 12 times, k1.  
134 sts.

**Row 2** P to end.

**Row 3** K1, [skpo, k9] 12 times, k1.  
122 sts.

**Row 4** P to end.

**Row 5** K1, [skpo, k8] 12 times, k1.  
110 sts.

**Row 6** P to end.

**Row 7** K1, [skpo, k7] 12 times, k1.  
98 sts.

**Row 8** P to end.

**Row 9** K1, [skpo, k6] 12 times, k1.  
86 sts.

**Row 10** P to end.

**Row 11** K1, [skpo, k5] 12 times, k1.  
74 sts.

**Row 12** P to end.

**Row 13** K1, [skpo, k4] 12 times, k1.  
62 sts.

**Row 14** P to end.

**Row 15** K1, [skpo, k3] 12 times, k1.  
50 sts.

**Row 16** P to end.

**Row 17** K1, [skpo, k2] 12 times, k1.  
38 sts.

**Row 18** P to end.

**Row 19** K1, [skpo, k1] 12 times, k1.  
26 sts.

**Row 20** P1, [p2tog] 12 times, p1. 14 sts.

**Row 21** K1, [skpo] 6 times, k1. 8 sts.  
Leaving a long end, cut off yarn and  
thread through rem sts.

## TO MAKE UP

Join seam.

# nordic throw

## FINISHED SIZE

Approx 79cm/31in by 107cm/42in

## YARN

Rowan *Felted Tweed DK*

Approx 500g of assorted colours, including Phantom 153 (A) for trunk. Each large square requires approx 12g of main colour (MC).

We used 2 x 50g balls of Mineral 181, for spots (CC) and edgings.

## NEEDLES

Pair each of 2.75mm (US 2) and 3.75mm (US 5) knitting needles  
3.25mm (US 3) circular needle

## TENSION

23 sts and 32 rows to 10cm/4in square over St st using 3.75mm (US 5) needles, or size to obtain correct tension.

## ABBREVIATIONS

See page 63.

## NOTE

When working from Chart, odd numbered rows are knit rows and read from right to left. Even numbered rows are purl rows and read from left to right.

Use the Fairisle method, strand the yarn not in use across the wrong side of work weaving them under and over the working yarn every 3 or 4 sts.

You will need to make 35 motifs for the Throw shown.

## PLAIN SQUARES

Leaving a long end of approx 30cm/12in, using 3.75mm (US 5) needles and colour of choice, cast on 37 sts.

Beg with a k row, work 44 rows in St st. Cast off.

## BIRD'S EYE SQUARE

Leaving a long end of approx 30cm/12in, using 3.75mm (US 5) needles and colour of choice (MC), cast on 37 sts.

**Row 1** K to end.

**Row 2** P to end.

**Row 3** K4MC, [1CC, 3MC] to last 5 sts, 1CC, 4MC.

**Row 4** P to end.

**Row 5** K to end.

**Row 6** P2MC, [1CC, 3MC] to last 3 sts, 1CC, 2MC.

These 6 rows form the patt.

Work a further 38 rows, ending row 2.

Leaving a long end of approx 30cm/12in, cast off.

## GARTER ST NORDIC TREE

### TRUNK

Leaving a long end of approx 20cm/8in, using 2.75mm (US 2) needles and A, cast on 5 sts.

K 10 rows.

Leave these sts on a spare needle.

### MAIN PART

Leaving a long end of approx 30cm/12in, using 2.75mm (US 2) needles and colour of choice (MC), cast on 15 sts.

**Row 1 (RS)** K5, with wrong side of trunk to right side of work, [k1tog with one st from trunk] 5 times, k5.

**Row 2** K to end.

**Row 3** Skpo, k to last 2 sts, k2tog. 13 sts.  
K 3 rows.

Rep the last 4 rows 5 times more. 3 sts.

K3tog and leaving a long end, fasten off.

## FAIRISLE NORDIC TREE

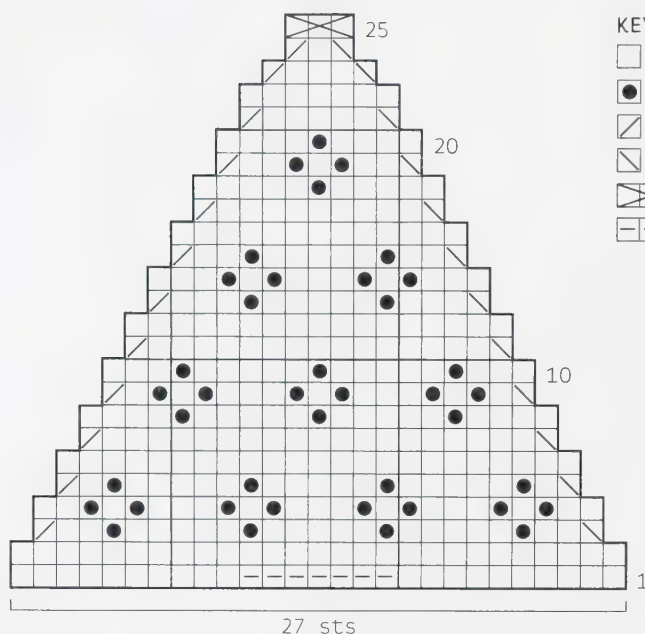
### TRUNK

Leaving a long end of approx 20cm/8in, using 2.75mm (US 2) needles and A, cast on 7 sts.

K 10 rows.

Leave these sts on a spare needle.





#### KEY

- K on RS, P on WS in MC
- K on RS, P on WS in CC
- ▧ k2tog on RS, p2tog on WS
- ▨ k2tog-tbl on RS, p2tog-tbl on WS
- ⊠ k3tog on RS
- graft on tree trunk

#### MAIN PART

We created different size trees by using either 2.75mm (US 2) needles or 3.75mm (US 5) needles.

Leaving a long end of approx 30cm/12in, using 2.75mm (US 2) or 3.75mm (US 5) needles and colour of choice (MC), cast on 27 sts.

**Row 1** K10, with right side of trunk to wrong side of cast on row, [k1tog with 1 st from trunk] 7 times, k10.

**Row 2** P to end.

Work in patt from row 3 of Chart, shaping as shown.

#### TOP EDGING

Sew trees to squares.

Join squares together to form a rectangle 5 squares wide by 7 squares deep and alternating motifs.

With right side facing, using 3.25mm (US 3) circular needle, pick up and k177 sts along cast-off edge.

**Next row** K to end.

**Next row** K1, m1, k to last st, m1, k1. 179 sts.

Rep the last 2 rows twice more. 183 sts. Cast off.

#### BOTTOM EDGING

With right side facing, using 3.25mm (US 3) circular needle, pick up and k177 sts along cast-on edge.

Work as given for top edging.

#### SIDE EDGINGS (both alike)

With right side facing, using circular needle, pick up and k196 sts along side edges.

**Next row** K to end.

**Next row** K1, m1, k to last st, m1, k1. 198 sts.

Rep the last 2 rows twice more. 202 sts. Cast off.

#### TO MAKE UP

Join corners of edgings.





# nordic cushion

## FINISHED SIZE

28cm/11in by 28cm/11in to fit a 30cm/12in square cushion pad.

## YARN

Rowan *Felted Tweed DK*

One x 50g ball in each of Avocado 161 (A) and Rage 150 (B)

Approx 20g of Mineral 181 (C)

Small amount of Phantom 153 (D) and

Seasalter 178 (E)

You will need approx 150g of assorted colours altogether

## NEEDLES

Pair each of 2.75mm (US 2) and 3.75mm (US 5) knitting needles

## EXTRAS

30cm/12in square cushion pad

## TENSION

23 sts and 32 rows to 10cm/4in square over St st using 3.75mm (US 5) needles, or size to obtain correct tension.

## ABBREVIATIONS

See page 63.

## NOTE

When working from Chart, odd numbered rows are knit rows and read from right to left. Even numbered rows are purl rows and read from left to right.

Use the Fairisle method, strand the yarn not in use across the wrong side of work weaving them under and over the working yarn every 3 or 4 sts.

## PLAIN SQUARE (make 2)

Leaving a long end of approx 30cm/12in, using 3.75mm (US 5) needles and A, cast on 37 sts.

Beg with a k row, work 44 rows in St st.

Leaving a long end of approx 30cm/12in, cast off.

## BIRD'S EYE SQUARE (make 2)

Leaving a long end of approx 30cm/12in, using 3.75mm (US 5) needles and B, cast on 37 sts.

**Row 1** Using B, k to end.

**Row 2** P to end.

**Row 3** K4B, [1C, 3B] to last 5 sts, 1C, 4B.

**Row 4** Using B, p to end.

**Row 5** K to end.

**Row 6** P2M, [1C, 3M] to last 3 sts, 1C, 2M.

These 6 rows form the patt.

Work a further 38 rows, ending row 2.

Leaving a long end of approx 30cm/12in, cast off.

## GARTER ST NORDIC TREE

(make 2)

### TRUNK

Leaving a long end of approx 20cm/8in, using 2.75mm (US 2) needles and D, cast on 5 sts.

K 10 rows.

Leave these sts on a spare needle.

### MAIN PART

Leaving a long end of approx 30cm/12in, using 2.75mm (US 2) needles and E, cast on 15 sts.

**Row 1 (RS)** K5, with right side of trunk to wrong side of cast-on row, [k1tog with one st from trunk] 5 times, k5.

**Row 2** K to end.

**Row 3** Skpo, k to last 2 sts, k2tog.

13 sts

K 3 rows.

Rep the last 4 rows 5 times more. 3 sts.

K3tog and leaving a long end, fasten off.

## FAIRISLE NORDIC TREE

(make 2)

### TRUNK

Leaving a long end of approx 20cm/8in, using 2.75mm (US 2) needles and D, cast on 7 sts.

K 10 rows.

Leave these sts on a spare needle.

### MAIN PART

Leaving a long end of approx 30cm/12in, using 2.75mm (US 2) needles and B, cast on 27 sts.

**Row 1** K10, with right side of trunk to wrong side of cast-on row, [k1tog with one st from trunk] 7 times, k10.

**Row 2** P to end.

Work in patt from row 3 of Chart, shaping as shown.

## BACK

Using 3.75mm (US 5) needles and colour of choice (we used B), cast on 71 sts.

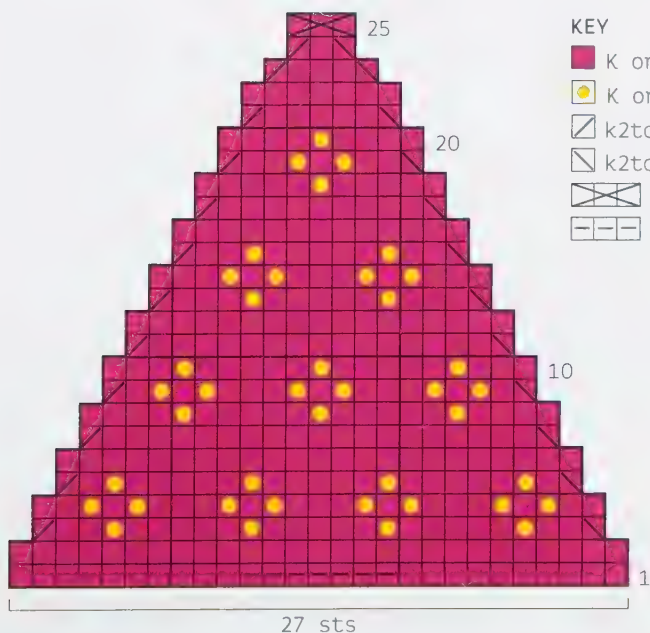
Work 88 rows in 4 row stripes in colours of choice.

Cast off.

## TO MAKE UP

Sew trees to squares. Join squares to form the front.

With right sides together, sew back to front along 3 sides. Insert cushion pad, join rem side.



### KEY

- K on RS, P on WS in Rage 150 (B)
- K on RS, P on WS in Mineral 181 (C)
- k2tog on RS, p2tog on WS
- k2tog-tbl on RS, p2tog-tbl on WS
- k3tog on RS
- graft on tree trunk



# nordic garland

## FINISHED SIZE

165cm/64in long

## YARN

Rowan *Felted Tweed DK*

Small amount of Phantom 153 (A) for trunk  
Oddments in an assortment of colours for  
tree (MC) and pattern (CC)

Approx 20g of one colour for i-cord

## NEEDLES

Two double-pointed 2.75mm (US 2) knitting  
needles

## EXTRAS

15 assorted buttons

## ABBREVIATIONS

See page 63.

## NOTE

When working from Chart, odd numbered  
rows are knit rows and read from right  
to left. Even numbered rows are purl rows  
and read from left to right.

Use the Fairisle method, strand the yarn  
not in use across the wrong side of work  
weaving them under and over the working  
yarn every 2 or 3 sts.

## GARTER ST NORDIC TREE

### TRUNK

Using 2.75mm (US 2) needles and A, cast  
on 5 sts.

K10 rows.

Leave these sts on a spare needle.

### MAIN PART

Using 2.75mm (US 2) needles, cast on  
15 sts.

**Row 1 (RS)** K5, with wrong side of trunk  
to right side of work, [k1tog with one st  
from trunk] 5 times, k5.

**Row 2** K to end.

**Row 3** Skpo, k to last 2 sts, k2tog.

13 sts.

K 3 rows.

Rep the last 4 rows 5 times more. 3 sts.

K3tog and leaving a long end, fasten off.

## FAIRISLE NORDIC TREE A

### TRUNK

Using 2.75mm (US 2) needles and A, cast  
on 5 sts.

K 10 rows.

Leave these sts on a spare needle.

### MAIN PART

Using 2.75mm (US 2) needles and MC, cast  
on 23 sts.

**Row 1 (RS)** K9, with wrong side of trunk  
to right side of work, [k1tog with one st  
from trunk] 5 times, k9.

**Row 2** P to end.

Work in patt from row 3 of Chart A,  
shaping as shown.

## FAIRISLE NORDIC TREE B

### TRUNK

Using 2.75mm (US 2) needles and A, cast  
on 7 sts.

K 10 rows.

Leave these sts on a spare needle.

### MAIN PART

Using 2.75mm (US 2) needles and MC, cast  
on 27 sts.

**Row 1 (RS)** K10, with wrong side of trunk  
to right side of work, [k1tog with one st  
from trunk] 7 times, k10.

**Row 2** P to end.

Work in patt from row 3 of Chart B,  
shaping as shown.

## I - CORD

Using 2.75mm (US 2) needles, cast on 4  
sts.

\*K4, do not turn, slide sts back to other  
end of needle, bring yarn tightly across  
back of work; rep from \* until i-cord  
measures 165cm/65in from beg. Cast off.

## TO MAKE UP

Arrange trees along i-cord 11cm/4½in  
apart and secure top of tree to i-cord  
with a button.

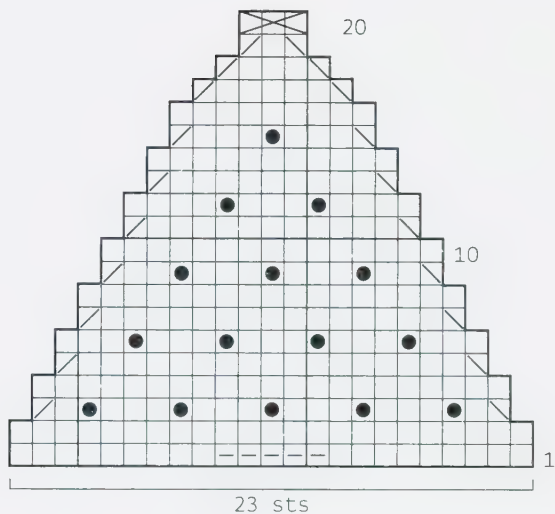


CHART A (Fairisle Nordic Tree A)

### KEY

- K on RS, P on WS in MC
- K on RS, P on WS in CC
- ▤ k2tog on RS, p2tog on WS
- ▥ k2tog-tbl on RS, p2tog-tbl on WS
- ▧ k3tog on RS
- ▨ graft on tree trunk

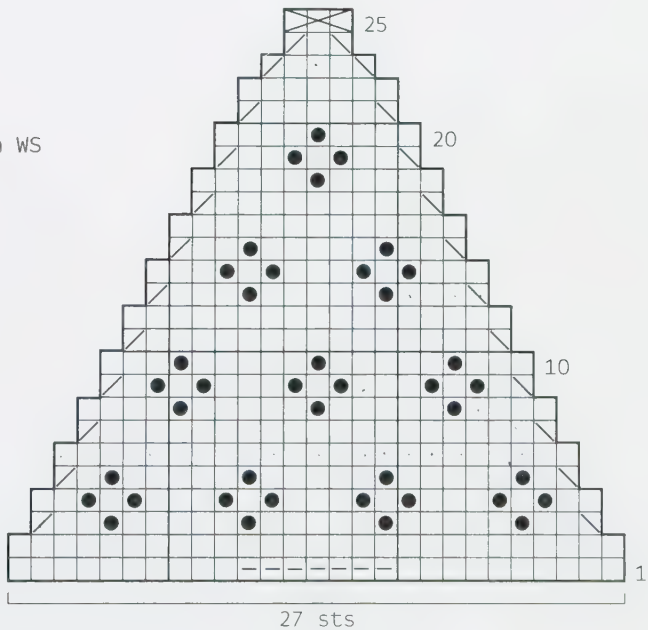


CHART B (Fairisle Nordic Tree B)

# useful information

## FAIRISLE

When you are working a pattern with two (or more) repeating colours in the same row, you need to strand the yarn not in use behind the stitches being worked. This needs to be done with care, loosely enough to ensure that the strands not in work do not tighten and pucker the front of the knitting. To do this you need to treat the yarns not in use (known as floating yarns) as if they were one yarn and spreads the stitches as you work to their correct width to keep them elastic. If your pattern demands that the stranded (floating) yarns are carried across more than three stitches, it is wise each time you change colours to weave the new yarn colour under and over the colour yarn you are working (over the first time, under the second time and so on). The alternating 'under and over' movement helps to prevent the floating yarns from tangling by keeping them caught at the back of the work. If you tend to knit colourwork too tightly, increase your needle size for the colourwork section. If you make a minor mistake using the Fairisle technique – say, just a single stitch – you can recreate it in the correct colour using the Swiss darning technique, in which you duplicate the stitch using a darning needle and the chosen colour.

## TENSION

To check your tension, knit a square in the pattern stitch and/or stocking stitch of perhaps 5–10 more stitches and 5–10 more rows than those given in the tension note. Press the finished square under a damp cloth and mark out the central 10cm/4in square with pins. If you have too many stitches to 10cm/4in, try again using thicker needles. If you

have too few stitches to 10cm/4in, try again using finer needles.

## CHART NOTES

Each square of the chart represents a stitch and each line of squares represents a row of knitting. When working from charts, read odd-numbered rows (K) from right to left and even numbered rows (P) from left to right, unless otherwise stated.

## FINISHING METHODS

### Pressing

Block out each piece of knitting by pinning it on a board to the correct measurements in the pattern. Then lightly press it according to the ball band instructions, omitting any ribbed areas. Take special care to press the edges as this makes sewing up easier and neater. Darn in all ends neatly along the selvedge edge or a colour join, as appropriate.

### Stitching seams

When you stitch the pieces together, remember to match any areas of colour and texture carefully where they meet. After all the seams are complete, press the seams and hems.

## ROWAN FELTED TWEED DK

A wool-alpaca-viscose mix (50 per cent merino wool, 25 per cent alpaca wool, 25 per cent viscose); 50g (approx 175m/191yd) per ball. Recommended tension: 22–24 sts and 30–32 rows to 10cm/4in in St st using 3.5–4mm (US size 5–6) knitting needles.



# acknowledgments

## ABBREVIATIONS

The knitting pattern abbreviations used in this book are as below.

alt	alternate
approx	approximately
beg	begin(s)(ning)
cm	centimetres
cont	continu(e)(ing)
CC	contrast colour
dec	decreas(e)(ing)
DPN	double-pointed needle
foll(s)	follow(s)(ing)
g	gram
in	inch(es)
inc	increas(e)(ing)
k	knit
k2tog	knit next 2 sts together
MC	main colour
mm	millimetres
m1	make one st by picking up horizontal loop before next st and knitting into back of it
p	purl
patt	pattern
p2tog	purl next 2 sts together
rem	remain(s)(ing)
rep	repeat
rev/St st	reverse stocking stitch
RS	right side
skpo	sl 1, k1, pass slipped stitch over
sl 1	slip one st
sl 1pw	slip one st purlwise
st(s)	stitch(es)
St st	stocking stitch (1 row knit, 1 row purl)
tbl	through back of loop(s)
tog	together
WS	wrong side
yd	yard(s)
[ ]/*	repeat instructions within square brackets or between asterisks

A big, big thank you to the following team of people: Steven and Susan for their great work on photography, art direction and styling; my niece, Harriet, for modelling so beautifully; Anne, for her gorgeous page layouts; our fabulous pattern writer, Penny Hill and her band of wonderful knitters; Frances, for the beautifully knitted swatches; Katie and Jill for their diligent editing and checking; and the entire Rowan team for their continuous support.

## PUBLISHERS' ACKNOWLEDGMENTS

All this was made easy by working with a consummate professional like Martin! Many, many thanks to him and to the 'team' for their similar professional ethic.



# stockists

U.K.  
Rowan, Green Lane Mill,  
Holmfirth,  
West Yorkshire HD9 2DX  
www.knitrowan.com

U.S.A.  
Westminster Fibers Inc,  
8 Shelter Drive, Greer  
South Carolina 29650  
www.westminsterfibers.com

AUSTRALIA  
Australian Country Spinners  
Pty Ltd,  
Melbourne, Victoria 3004  
tkohut@ausspinners.com.au

AUSTRIA  
Coats Harlander Ges GmbH  
1210 Vienna  
www.coatscrafts.at

BELGIUM  
See Germany

BULGARIA  
Coats Bulgaria  
BG-1784 Sofia  
www.coatsbulgaria.bg

CANADA  
Westminster Fibers Inc,  
Vaughan, Ontario L4H 3M8  
www.westminsterfibers.com

CHINA  
Coats Shanghai Ltd, Shanghai  
victor.li@coats.com

CYPRUS  
See Bulgaria

DENMARK  
Coats Expotex AB, Dalsjöfors  
info.dk@coats.com

FINLAND  
Coats Opti Crafts Oy, Kerava  
04200  
www.coatscrafts.fi

FRANCE  
www.coatscrafts.fr

GERMANY  
Coats GmbH, Kenzingen 79341  
www.coatsgmbh.de

GREECE  
See Bulgaria

HONG KONG  
East Unity Company Ltd,  
Chai Wan  
eastunityco@yahoo.com.hk

ICELAND  
Rowan At Storkurinn,  
Reykjavik 101  
www.storkurinn.is

ITALY  
Coats Cucirini srl, Milan  
20126  
www.coatscucirini.com

KOREA  
Coats Korea Co. Lt,  
Seoul 137-060  
www.coatskorea.co.kr

LEBANON  
y.knot, Saifi Village, Beirut  
y.knot@cyberia.net.lb

LITHUANIA & RUSSIA  
Coats Lietuva UAB,  
Vilnius 09310  
www.coatscrafts.lt

LUXEMBOURG  
See Germany

NEW ZEALAND  
ACS New Zealand,  
Christchurch  
64 3 323 6665

NORWAY  
Coats Knappehuset AS,  
Bergen 5873  
kundeservice@coats.com

PORTUGAL  
Coats & Clark,  
Vila Nova de Gaia 4400  
351 223 770700

SINGAPORE  
Golden Dragon Store,  
Singapore 058357  
gdsraft@hotmail.com

SOUTH AFRICA  
Arthur Bales Ltd,  
Johannesburg 2195  
arthurb@new.co.za

SPAIN  
Coats Fabra,  
Barcelona 08030  
www.coatscrafts.es

SWEDEN  
Coats Expotex AB  
kundtjanst@coats.com

SWITZERLAND  
Coats Stroppel AG,  
Untersiggenthal 5417  
www.coatscrafts.ch

TAIWAN  
Cactus Quality Co Ltd,  
Taiwan, R.O.C. 10084  
00886-2-23656527

THAILAND  
Global Wide Trading,  
Bangkok 10310  
global.wide@yahoo.com

For stockists in all other  
countries please contact  
Rowan for details

230B1  
HYCO JACKET  
TEL: 085501 2867025

EDINBURGH  
LIBRARIES

C0046891080

Bertrams

18/08/2015

£9.99

BH

TT825

STOREY MARTIN

Easy fairisle knits : 14 proje  
293798/00042 - 1 of 1



Give yourself a treat with Martin Storey's collection of contemporary simplified fairisle designs. Choose from hats, socks, scarves and cushions plus a slipover, bag, throw and garland - all with only two colours in a row.



£9.99

ISBN 978-1-907544-87-3



9 781907 544873

Rowan  
Green Lane Mill  
Holmfirth  
West Yorkshire HD9 2DX  
Tel: +44 (0)1484 681881  
[www.knitrowan.com](http://www.knitrowan.com)



KQ-197-438

