



# Droplets

DESIGN BY **FRANKLIN HABIT**

Fun and deliciously quirky, this hat is exactly what you yearn for when combining Fair Isle and amusement.

**1 2 3 4 5 6** MODERATELY CHALLENGING

## Finished Measurements

**Circumference:** 20 inches

**Height:** 8 inches

## Materials

- Lorna's Laces Shepherd Worsted (worsted weight; 100% superwash merino wool; 225 yds/4 oz per hank): 1 hank each berry #23NS (A) and Douglas fir #6NS (B)
- Size 5 (3.75mm) 16-inch circular needle
- Size 6 (4mm) 16-inch circular needle and double-point needles (set of 5) or size needed to obtain gauge
- Removable stitch marker



## Hat

With A and smaller needle, cast on 110 sts; pm for beg of rnd and join, being careful not to twist sts.

Work in Twisted Rib for 6 rnds.

Change to B. Knit 1 rnd. Work in Twisted Rib for 1 rnd. Cut B.

Change to A. Work in Twisted Rib for 6 rnds.

Change to larger needle, St st and Chart A; work Rnds 1–24. Cut B.

Continuing with A, knit 5 rnds.

Work Rnds 1–3 of Chart B. Cut A.

Continuing with B, knit 3 rnds, ending last rnd 1 st before marker; reposition marker to before last st to indicate new beg of rnd.

## Gauge

22 sts and 20 rnds = 4 inches/10cm in 2-color stranded St st with larger needle. To save time, take time to check gauge.

## Pattern Stitches

**Twisted Rib** (even number of sts)

**Rnd 1:** \*K1-tbl, p1; rep from \* to end.

Rep Rnd 1 for pat.

## Fair Isle

Color patterns are worked from charts.

## Pattern Notes

When working Fair Isle charts, do not carry yarn float more than 5 stitches across wrong side; loosely twist yarns on wrong side to catch long floats. The beginning-of-round marker is repositioned several times during crown shaping using a removable stitch marker will make it easier to reposition.



Draw tail through rem sts and pull firmly to close.

## Finishing

Block to measurements.

Fold cast-on edge to WS at stripe in B and sew cast-on edge to WS, being careful not to let sts show on RS.

Weave in all ends. ■

### COLOR KEY

■ A  
■ B

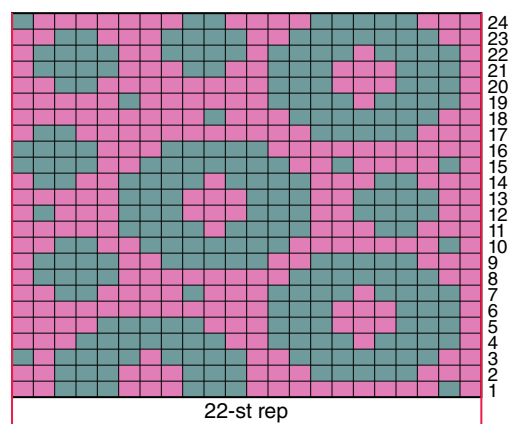


CHART A

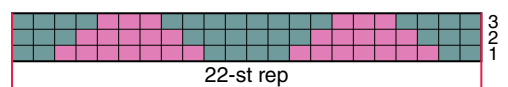


CHART B

## Shape Crown

**Note:** Change to dpns when sts no longer fit comfortably on circular needle.

**Rnd 1:** \*Sk2p, k19; rep from \* to end—100 sts.

**Rnd 2:** Knit.

**Rnd 3:** K9, \*sk2p, k17; rep from \* to last 11 sts, sk2p, k8—90 sts.

**Rnd 4:** Knit to last st; reposition marker to before last st.

**Rnd 5:** \*Sk2p, k15; rep from \* to end—80 sts.

**Rnd 6:** Knit.

**Rnd 7:** K7, \*sk2p, k13; rep from \* to last 9 sts, sk2p, k6—70 sts.

**Rnd 8:** Knit to last st; reposition marker to before last st.

**Rnd 9:** \*Sk2p, k11; rep from \* to end—60 sts.

**Rnd 10:** Knit.

**Rnd 11:** K5, \*sk2p, k9; rep from \* to last 7 sts, sk2p, k4—50 sts. Cut B.

**Rnd 12:** With A, knit to last st; reposition marker to before last st.

**Rnd 13:** \*Sk2p, k7; rep from \* to end—40 sts.

**Rnd 14:** Knit.

**Rnd 15:** K3, \*sk2p, k5; rep from \* to last 5 sts, sk2p, k2—30 sts.

**Rnd 16:** Knit to last st; reposition marker to before last st.

**Rnd 17:** \*Sk2p, k3; rep from \* to end—20 sts.

**Rnd 18:** Knit.

**Rnd 19:** K1, \*sk2p, k1; rep from \* to last 2 sts, remove marker, sk2p, pm—10 sts.

**Rnd 20:** \*K2tog; rep from \* to end—5 sts.

Cut yarn, leaving an 8-inch tail.