



The designer set out to design a sweater that any guy would want—the result was the *Cotswold Henley*, a rugged-looking sweater with a bit of sophistication in the fit and in such details as the tubular cast-ons and bind-offs. *Meghan Babin.*
VARN Briggs & Little Regal





COTSWOLD HENLEY

Meghan Babin

Finished Size 36 $\frac{1}{4}$ (40, 42 $\frac{3}{4}$, 47 $\frac{1}{2}$, 52 $\frac{1}{4}$)" chest circumference. Henley shown measures 42 $\frac{3}{4}$ ", modeled with 2 $\frac{3}{4}$ " of positive ease.

Yarn Briggs & Little Regal (100% wool; 272 yd [249 m]/4 oz [113 g]): forest brown, 5 (5, 6, 7, 7) skeins.

Needles Sizes 7 (4.5 mm) and 5 (3.75 mm): 24" and 16" circular (cir) and set of double-pointed (dnp). Adjust needle size if necessary to obtain the correct gauge.

Notions Markers (m); size G/6 (4 mm) crochet hook; waste yarn for provisional CO; cable needle (cn); stitch holders; tapestry needle; three 1 $\frac{1}{8}$ " buttons.

Gauge 17 sts and 28 rnds = 4" in Henley Rib patt on larger needle; 17 sts and 28 rnds = 4" in Garter Basketweave patt on larger needle.



NOTES

- The body of this pullover is worked in the round in one piece to the underarms, then the upper front and back are worked separately back and forth. Stitches for the sleeves are picked up around the armhole and the sleeves are worked in the round from the top down with a short-row sleeve cap.
- Slip stitches purlwise except where indicated otherwise.

Stitch Guide

Tubular BO for sleeves:

Rnd 1 K0 (0, 0, 1, 1), sl 1 (1, 1, 2, 2) wyf, *k2, sl 2 wyf; rep from * to last 3 (3, 3, 1, 1) st(s), k2 (2, 2, 1, 1), sl 1 (1, 1, 0, 0) wyf.

Rnd 2 Sl 0 (0, 0, 1, 1) wyb, p1 (1, 1, 2, 2), *sl 2 wyb, p2; rep from * to last 3 (3, 3, 1, 1) st(s), sl 2 (2, 2, 1, 1) wyb, p1 (1, 1, 0, 0).

Dividing rnd With 2 smaller cir needles held parallel, sl all sts as foll: sl 0 (0, 0, 1, 1) st to front needle, sl 1 (1, 1, 2, 2) st(s) to back needle, *sl 2 sts to front needle, sl 2 sts to back needle; rep from * to last 3 (3, 3, 1, 1) st(s), sl 2 (2, 2, 1, 1) st(s) to front needle, sl 1 (1, 1, 0, 0) st to back needle—same number of sts on each needle. Break yarn, leaving a tail 4 times length of finished edge. With tail threaded on a tapestry needle, graft sts using Kitchener st.

Tubular BO for collar and plackets:

Row 1 (RS) K1, *k2, sl 2 wyf; rep from * to last 3 sts, k3.

Row 2 (WS) Sl 1 wyb, *sl 2 wyf, k2; rep from * to last 3 sts, sl 2 wyf, sl 1 wyb.

Dividing row (RS) With 2 smaller cir needles held parallel, sl all sts as foll: sl 1 st to back needle, *sl 2 sts to front needle, sl 2 sts to back needle; rep from * to last 3 sts, sl 2 sts to front needle, sl 1 st to back needle—same number of sts on each needle. Break yarn, leaving a tail 4 times length of finished edge. With tail threaded on a tapestry needle, graft sts using Kitchener st.

BODY

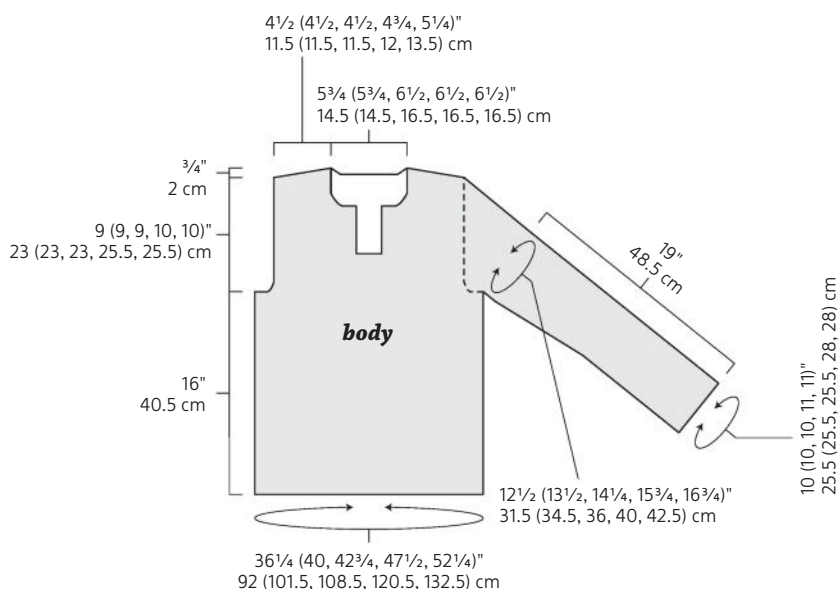
Tubular CO: With smaller, longer cir needle and using the crochet chain provisional method, CO 77 (85, 91, 101, 111) sts. Do not join.

Set-up row 1 (WS) Purl.

Set-up row 2 (RS) *K1, lift running thread between sts and purl; rep from * to last st, k2tog (last st of row and first st of row), transfer this st to left needle—152 (168, 180, 200, 220) sts.

Pm and join in the rnd.

Rnd 1 *Sl 1 wyb, p1; rep from * to end.





Rnd 2 *K1, sl 1 wyf; rep from * to end.

Rnds 3 and 4 Rep Rnds 1 and 2.

Set-up rnd Note: Working yarn is not used for this rnd. Wyb, *sl 1, sl 1 st onto cn and hold in back, sl 1, sl 1 st from cn to right needle, sl 1; rep from * to end.

Rnd 5 *Sl 2 wyb, p2; rep from * to end.

Rnd 6 *K2, sl 2 wyf; rep from * to end. Work in k2, p2 rib until piece measures 2" from CO. Change to larger, longer cir needle.

Set-up rnd *K19 (23, 26, 31, 36), pm, k38, pm, k19 (23, 26, 31, 36), M1P, pm; rep from * once more—154 (170, 182, 202, 222) sts.

Next rnd *Beg with st 2 (2, 1, 2, 1) and ending with st 2 of chart, work Henley Rib chart to m, work Garter Basketweave chart to m, beg with st 2 and ending with st 2 (2, 1, 2, 1) of chart, work Henley Rib chart to 1 st before m, p1; rep from * once more. Cont in patt, maintaining faux seam purl st before

m, until piece measures 16" from CO, ending with Row 4 of Henley Rib chart and Row 4 or Row 8 of Garter Basketweave chart, and ending 5 (6, 6, 7, 7) sts before end of rnd on last rnd. **Divide for front and back:** **Next rnd** BO 9 (11, 11, 13, 13) sts, work in patt to 5 (6, 6, 7, 7) sts before m, place 68 (74, 80, 88, 98) sts just worked on holder for front, BO 9 (11, 11, 13, 13) sts, work in patt to end—68 (74, 80, 88, 98) sts rem for back.

BACK

Shape armholes:

Row 1 (WS) P1, knit to m, work in patt to m, knit to last st, p1.

Row 2 (RS) K1, ssk, knit to m, work in patt to m, knit to last 3 sts, k2tog, k1—2 sts dec'd.

Rows 3 and 4 Rep Rows 1 and 2—64 (70, 76, 84, 94) sts rem.

Row 5 P1, beg with st 6 (5, 4, 4, 5) and ending with st 1 (2, 3, 3, 2), work next row of Garter Basketweave chart to last st (removing m), p1.

Row 6 K1, ssk, work in patt to last 3 sts, k2tog, k1—2 sts dec'd.

Row 7 P1, work in patt to last st, p1.

Rep last 2 rows 0 (3, 4, 0, 0) more times—62 (62, 66, 82, 92) sts rem.

Sizes 47½ (52¼)" only:

Dec row (RS) K1, ssk, work in patt to last 3 sts, k2tog, k1—2 sts dec'd. **Dec row** (WS) P1, p2tog, work in patt to last 3 sts, ssp, p1—2 sts dec'd. Rep last 2 rows 2 (4) more times, then work RS dec row 1 (0) time—68 (72) sts rem.

All sizes:

Work even until armhole measures 9 (9, 9, 10, 10)", ending with a WS row. **Shape shoulders and neck:**

Short-row 1 (RS) Work in patt to last 5 sts, wrap next st, turn.

Short-row 2 (WS) Work in patt to last 5 sts, wrap next st, turn.

Short-row 3 Work 18 (18, 18, 19, 21) sts in patt, join new yarn and BO 16 (16, 20, 20, 20) sts, work in patt to 5 sts before wrapped st, wrap next st, turn—46 (46, 46, 48, 52) sts rem: 23 (23, 23, 24, 26) sts for each shoulder.

Note: Left and right shoulders are worked separately at the same time; instructions for each shoulder are separated with a semicolon.

Short-row 4 (WS) Work in patt to 2 sts before left neck edge, ssp; p2tog, work in patt to 5 sts before wrapped st, wrap next st, turn—22 (22, 22, 23, 25) sts rem for each shoulder.

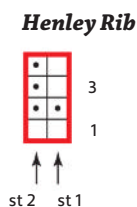
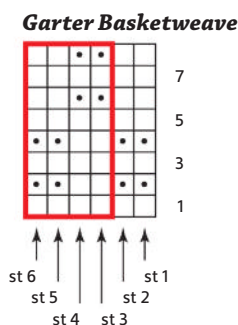
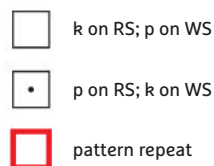
Short-row 5 (RS) Work in patt to 2 sts before right neck edge, k2tog; ssk, work in patt to 5 sts before wrapped st, wrap next st, turn—21 (21, 21, 22, 24) sts rem for each shoulder.

Short-row 6 Work in patt to 2 sts before left neck edge, ssp; p2tog, work in patt to 5 sts before wrapped st, wrap next st, turn—20 (20, 20, 21, 23) sts rem for each shoulder.

Short-row 7 Work in patt to 2 sts before right neck edge, k2tog; ssk, work in patt to end, working wraps tog with wrapped sts—19 (19, 19, 20, 22) sts rem for each shoulder.

Break yarn for left shoulder, leaving a 28" tail. Place left shoulder sts on holder.

Right shoulder: **Next row** (WS) Work to end, working wraps tog with wrapped sts. Break yarn, leaving a 28" tail. Place sts on holder.



FRONT

Return 68 (74, 80, 88, 98) held front sts to larger, longer cir needle and, with WS facing, rejoin yarn. Shape armholes as for back—62 (62, 66, 68, 72) sts rem.

Work even until armholes measure 3 (3, 3½, 4)", ending with a WS row. **Divide for placket:** **Next row** (RS) Work 27 (28, 29, 31, 32) sts in patt and place these sts on holder for left front, BO 8 (6, 8, 6, 8) sts, work in patt to end—27 (28, 29, 31, 32) sts rem for right front. **Right front:**

Next row (WS) Work in patt to last st, k1. Cont in patt, working neck edge st in garter st, until armhole measures 7 (7, 7, 8, 8)", ending with a WS row. **Shape neck:** At beg of RS rows, BO 2 (2, 4, 4, 4) sts 2 (2, 1, 1, 1) time(s), then BO 0 (0, 2, 2, 2) sts 0 (0, 2, 2, 2) times—23 (24, 21, 23, 24) sts rem. Work 1 WS row. **Dec row** (RS) K1, ssk or ssp to maintain patt, work in patt to end—1 st dec'd. Rep Dec row every RS row 3 (4, 1, 2, 1) more time(s)—19 (19, 19, 20, 22) sts rem. Work even until armhole measures 9 (9, 9, 10, 10)", ending with a WS row. Shape shoulder using short-rows as foll:

Short-row 1 (RS) Work in patt to last 5 sts, wrap next st, turn.

Short-row 2 (WS) Work in patt to end.

Short-row 3 Work to 5 sts before wrapped st, wrap next st, turn.

Short-row 4 Work to end.

Rep last 2 short-rows once more. **Next row** (RS) Work to end, working wraps tog with wrapped sts. Place sts on holder. **Left front:** Return 27 (28, 29, 31, 32) left front sts to larger needle. With WS facing, rejoin yarn. **Next row** (WS) K1, work in patt to end. Cont in patt, working neck edge st in garter st, until armhole measures 7 (7, 7, 8, 8)", ending with a RS row. **Shape neck:** At beg of WS rows, BO 2 (2, 4, 4, 4) sts 2 (2, 1, 1, 1) time(s), then BO 0 (0, 2, 2, 2) sts 0 (0, 2, 2, 2) times—23 (24, 21, 23, 24) sts rem.

Dec row (RS) Work in patt to last 3 sts,

k2tog or p2tog to maintain patt, k1—1 st dec'd. Rep Dec row every RS row 3 (4, 1, 2, 1) more time(s)—19 (19, 19, 20, 22) sts rem. Work even until armhole measures 9 (9, 9, 10, 10)", ending with a RS row. Shape shoulder using short-rows as foll:

Short-row 1 (WS) Work in patt to last 5 sts, wrap next st, turn.

Short-row 2 (RS) Work in patt to end.

Short-row 3 Work to 5 sts before wrapped st, wrap next st, turn.

Short-row 4 Work to end.

Rep last 2 short-rows once more. **Next row** (WS) Work to end, working wraps tog with wrapped sts. With RS tog and using tails from back, join shoulders using three-needle BO.

SLEEVES

With smaller 16" cir needle and RS facing, beg at center of underarm, pick up and knit 71 (71, 71, 79, 79) sts evenly spaced around armhole. Pm and join in the rnd. Change to larger 16" cir needle. Purl 1 rnd. Shape cap using short-rows as foll:

Short-row 1 (RS) K40 (40, 40, 44, 44), wrap next st, turn.

Short-row 2 (WS) Work Row 2 of Garter Basketweave chart over 10 sts, wrap next st, turn.

Working new sts into patt, cont as foll:

Short-row 3 Work in patt to wrapped st, work wrap tog with wrapped st, wrap next st, turn.

Short-row 4 Work in patt to wrapped st, work wrap tog with wrapped st, wrap next st, turn.

Rep last 2 short-rows 10 (14, 18, 20, 24) more times—19 (15, 11, 13, 9) unworked sts at beg of rnd, 20 (16, 12, 14, 10) unworked sts at end of rnd (including last wrapped st).

Short-row 5 (RS) Work to wrapped st, k2tog or p2tog to maintain patt while working wrap tog with wrapped st, wrap next st, turn—1 st dec'd.

Short-row 6 (WS) Work to wrapped st, ssk or ssp to maintain patt while working wrap tog with wrapped st, wrap next st, turn—1 st dec'd.

Rep last 2 short-rows 8 (6, 4, 5, 3) more times—53 (57, 61, 67, 71) sts rem; 1 unworked st at beg of rnd, 2 unworked sts at end of rnd. **Next row** (RS) Work in patt to last st, working wrap tog with wrapped st, p1. **Next rnd** Work in patt to last st, working rem wrap, p1. Work 7 rnds even. **Dec rnd** K2tog or p2tog to maintain patt, work in patt to last 3 sts, ssk or ssp to maintain patt, p1—51 (55, 59, 65, 69) sts rem.

Work 2 rnds even. **Next rnd** P16 (18, 20, 23, 25), pm, work 18 sts in patt, pm, purl to end. **Next rnd** Knit to m, work in patt to m, knit to last st, p1. **Next rnd** Purl to m, work in patt to m, purl to end. **Henley rib:** **Next rnd** Beg with st 1 (1, 1, 2, 2) and ending with st 2 of chart, work Row 3 of Henley Rib chart to m, work in patt to m, beg with st 2 and ending with st 2 (2, 2, 1, 1) of chart, work Row 3 of Henley Rib chart to end. Cont in patt, work 7 (1, 1, 0, 0) rnd(s) even. **Dec rnd** K2tog or p2tog to maintain patt, work to last 2 sts, ssk or ssp to maintain patt—2 sts dec'd. Rep Dec rnd every 14 (8, 8, 6, 5)th rnd 3 (5, 7, 8, 10) more times—43 (43, 43, 47, 47) sts rem. Work even until piece measures about 17" from underarm, ending with Row 8 of Garter Basketweave chart. **Dec rnd** K2tog, work to last 3 sts, sssk—40 (40, 40, 44, 44) sts rem. Change to smaller dpn. **Next rnd** K0 (0, 0, 1, 1), p1 (1, 1, 2, 2), *k2, p2; rep from * to last 3 (3, 3, 1, 1) st(s), k2 (2, 2, 1, 1), p1 (1, 1, 0, 0). Cont in rib for 12 more rnds. Using the tubular method (see Stitch Guide), BO all sts.

FINISHING

Collar: With smaller cir needle and RS facing, beg at right front neck edge, pick up and knit 64 (64, 68, 68, 68) sts evenly spaced around neck. Do not join. **Next row** (WS) K1, *p2, k2; rep from * to last 3 sts, p2, k1. **Next row** (RS) K1, *k2, p2; rep from * to last 3 sts, k3. Rep last 2 rows until piece measures 2" from pick-up row, ending with a WS row. Using the tubular method, BO all sts. **Button placket:** With smaller cir needle and RS facing, beg at bottom right edge of placket opening, pick up and knit 40 sts along placket and collar edge. **Next row** (WS) K1, *p2, k2; rep from * to last 3 sts, p2, k1. **Next row** (RS) K1, *k2, p2; rep from * to last 3 sts, k3. Rep last 2 rows until piece measures 1¼" from pick-up row, ending with a WS row. Using the tubular method, BO all sts. **Button-**

hole placket: With smaller cir needle and RS facing, beg at top edge of collar, pick up and knit 40 sts along collar and left placket opening.

Row 1 (WS) K1, *p2, k2; rep from * to last 3 sts, p2, k1.

Row 2 (RS) K1, *k2, p2; rep from * to last 3 sts, k3.

Rep last 2 rows once more, then work Row 1 again. **Buttonhole row** (RS) K3, p2, *work 6-st one-row buttonhole, p2, k2, p2; rep from * once more, work 6-st one-row buttonhole, p2, k3. Work Rows 1 and 2 two more times, then work Row 1 again. Using the tubular method, BO all sts.

Sew edge of button placket and buttonhole placket to BO sts at base of placket. Weave in ends. Block to measurements. Sew buttons to button placket opposite buttonholes.

After years of knitting original designs for herself and loved ones, **Meghan Babin** finally committed some of those designs to paper. As a yarn and fiber lover, Meghan naturally found working at the Cornwall Yarn Shop the best thing to do by day, and she designs knitwear by night.

