

Cosy Coco Hood



#COSYCOCOHOOD

The Cosy Coco Hood is the perfect accessory to keep both your head and neck warm on a cold day. The large decorative bow at the front adds a playful element to the design and the honeycomb stitch pattern is both quick and fun to knit. The hood has a set of snap buttons at the front of the neck which means you don't have to pull it over your head to wear it - no more getting your hair all messed up, yay! You can also wear the Cosy Coco Hood down as a neckwarmer to add a nice detail to your outfit.

The Cosy Coco Hood is worked from the top down on 4.5 mm/ US7 needles in a honeycomb motif in a DK weight yarn. The work starts by casting on stitches at the forehead and working the top of the head part flat. Stitches are picked up around the right and left edges of the top of the head part and worked flat until the neck. Lastly, stitches are picked up around the face to create a wide double knitted tie strap which is knitted on 3 mm/ US2.25 needles.

#knitwithkika

Cosy Coco Hood

SIZES:

Adult size.

FINISHED GARMENT MEASUREMENTS:

Neck circumference excluding double knitted placket: 57 cm / 22.5".

Neck circumference including double knitted placket: 59.5 cm / 23.5".

GAUGE:

19 sts x 25 rows = 10 x 10 cm / 4 x 4" on 4.5 mm/ US7 needles in Honeycomb stitch pattern holding 1 strand of mohair and 1 strand of merino together, after blocking

NEEDLES:

3 mm / US2.5 circular needles 60-80-100 cm / 24-32-40" for neck rib and double knitted tie strap, optional:
set of two 3 mm (US2.5) DPNs for double knitted strap.

4.5 mm / US7 circular needles 60-80-100 cm / 24-32-40".

NOTIONS:

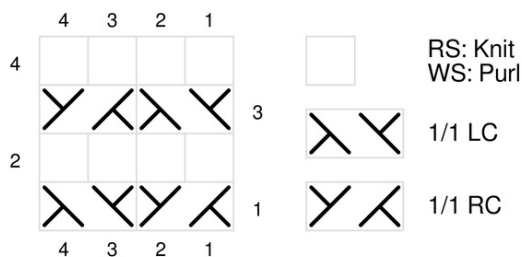
Set of 2 press buttons diameter 1 cm / 0.4", removable stitch markers, tapestry needle.

SUGGESTED YARN:

125 g Viking Garn Alpaca Storm (40% alpaca 40% merino, 20% nylon - 133 m / 145 yds / 50 g) in color 560 together with 40 g Knitting for Olive Soft Silk Mohair (70% mohair, 30% silk - 225 m / 246 yds / 25 g) in color Blood Orange.

The hood is worked holding 1 strand of merino and 1 strand of mohair together.

HONEYCOMB STITCH PATTERN



Cosy Coco Hood

TOP OF HEAD

Cast on 28 sts on 4.5 mm/ US7 60-80-100 cm / 24-32-40" circular needles with the Backwards Loop Cast-On method holding 1 strand of merino and 1 strand of mohair together. Place a removable stitch marker into the first stitch (this is where sts will be picked up for the hood later on).

Work 2 Setup Rows as follows:

Setup Row 1 (RS): Work Row 1 of Chart A (=k all sts).

Setup Row 2 (WS): Work Row 2 of Chart A (=p all sts).

Continue working according to Chart A as follows:

Row 3: Work Row 3 of Chart A: k2, *1/1LC, 1/1 RC* repeat to last 2 sts, k2.

Row 4: Work Row 4 of Chart A: p all sts.

Row 5: Work Row 5 of Chart A: k2, *1/1 RC, 1/1 LC* repeat to last 2 sts, k2.

Row 6: Work Row 6 of Chart A: p all sts.

Continue in this manner, always working the next row of Chart A until Rows 1-40 are finished.

Cut the yarn and leave the live stitches on the needle.

HOOD

Next, stitches are picked up and knitted along the right long side edge of the Top of Head part starting from the marker placed at the beginning at the cast-on edge (=Chart B), then the live stitches are worked (=Chart C), and the stitches are picked up along the left long side edge of the Top of Head part (=Chart D).

Work as follows:

Row 1 (RS): Join new yarn to the project and with the 4.5 mm/ US7 60-80-100 cm / 24-32-40" circular needle work Row 1 of Chart B as follows: pick up and knit 40 sts from the right edge of the top of the head part starting from the stitch marker placed in the beginning of the cast-on edge (you can remove the marker now). Then work Row 1 of Chart C across the top of head sts (sts number 41-68). Then continue and work Row 1 of Chart D as follows: pick up and knit 40 sts from the left edge of the top of the part.

There are 108 sts in total.

Row 2 (WS): Work Row 2 of Charts D, C and B: p all sts.

Row 3: Work Row 3 of Charts B, C and D: k2, *1/1 LC, 1/1 RC*, repeat to last 2 sts, k2.

Row 4: Work Row 4 of Charts D, C and B: p all sts.

Row 5: Work Row 5 of Charts B, C and D: k2, *1/1 RC, 1/1 LC*, repeat to last 2 sts, k2.

Row 6: Work Row 6 of Charts D, C and B: p all sts.

Repeat Rows 3-6 twelve more times, or until the hood measured from the pick-up edge is approx. 21.5 cm / 8.5".

Cosy Coco Hood

Next, the neckline is shaped by working increases along the edges of the hood. Continue working flat according to Chart E as follows:

Row 1 (RS): Work Row 1 of Chart E: k2, M1L, *1/1LC, 1/1 RC* repeat to last 2 sts, M1R, k2.

2 sts increased, there are 110 sts in total.

Row 2 (WS): Work Row 2 of Chart E: p all sts.

Row 3: Work Row 3 of Chart E: k2, M1L, k1, *1/1RC, 1/1 LC* repeat to last 3 sts, k1, M1R, k2.

2 sts increased, there are 112 sts in total.

Row 4 : Work Row 4 of Chart E: p all sts.

Row 5: Work Row 5 of Chart E: k2, M1L, 1/1 RC, *1/1LC, 1/1 RC* repeat to last 4 sts, 1/1 LC, M1R, k2.

2 sts increased, there are 114 sts in total.

Row 6: Work Row 6 of Chart E: p all sts.

Row 7: Work Row 7 of Chart E: k2, M1L, k1, 1/1 LC, *1/1RC, 1/1 LC* repeat to last 5 sts, 1/1 RC, k1, M1R, k2.

2 sts increased, there are 116 sts in total.

Row 8: Work Row 8 of Chart E: p all sts.

The Neckline shaping is now complete. Place removable stitch markers into the first and last stitch to mark where stitches will be picked up for the double knitted tie straps later.

Continue working the neck as follows:

Row 9: Work Row 9 of Chart E: k2, *1/1 LC, 1/1 RC* repeat to last 2 sts, k2.

Row 10: Work Row 10 of Chart E: p all sts.

Row 11: Work Row 11 of Chart E: k2, *1/1 RC, 1/1 LC* repeat to last 2 sts, k2.

Row 12: Work Row 12 of Chart E: p all sts.

Repeat Rows 9-12 once more.

Change to 3 mm / US 2.5 circular needles and work in rib flat as follows:

Row 1 (RS): K1, k2tog, *p1, k1* to last 3 sts, p1, k2. *1 st decreased, there are 115 sts in total.*

Row 2 (WS): P2, k1, *p1, k1* to last 2 sts, p2.

Row 3: K2, p1, *k1, p1* to last 2 sts, k2.

Row 4: P2, k1, *p1, k1* to last 2 sts, p2.

Repeat Rows 3-4 twice more.

Bind Off Using a stretchy bind off method as follows:

Tip! Bind off quite tightly as this bind-off method stretches quite a bit and will flare out unless worked quite tight, you can even switch to a smaller size needle for the bind-off.

Preparation step: K2, insert the left-hand needle into the 2 sts you just knit that are on the right needle and k2tog these sts. There's one stitch on the right-hand needle. *1 st bound off.*

Step 1: P1, insert the left-hand needle into the 2 sts that are on the right-hand needle and k2tog these sts. There's one stitch on the right-hand needle. *1 st bound off.*

Step 2: K1, insert the left-hand needle into the 2 sts that are on the right-hand needle and k2tog these sts. *1 st bound off.*

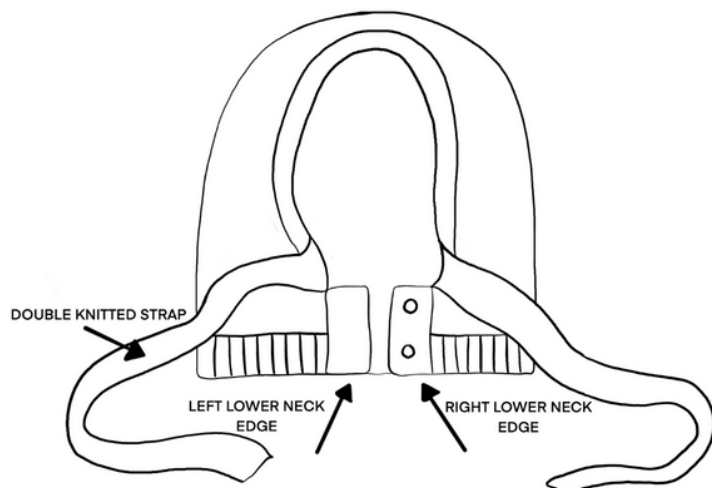
Repeat Steps 1-2 until there are 2 sts remaining on the left-hand needle, k2tog.

Cut yarn and pull through the last stitch.

Cosy Coco Hood

LOWER NECK EDGES

For the lower neck edges sts are picked up with a 3 mm / US 2.5 circular needle for a double knitted edge.



RIGHT LOWER NECK EDGE

Start by picking up and knitting sts as follows:

Pick up and knit 1 stitch for every row (picking up 14 sts in total) starting at the right side stitch marker placed after the neckline shaping (when looking at the hood from the front, RS facing you) from top to bottom with a 3 mm / US 2.5 circular needle. Cut the yarn.

Join in new yarn and work the double knitted placket. Start from the top of the right lower neck edge where the marker was placed after the neckline shaping.

Tip!

See a video tutorial on how pick up sts for the double knitted placket and how to cast on sts using the Italian Cast-On method in this video: <https://youtu.be/wWnzbEpEKMw?si=LbIAkejB0MBjvG2V&t=2855>

Or go to @Kutovakika YouTube: Darling Cardigan Knit Tutorial with Double Knitted Buttonband (Timestamp 47:35)

Work as follows:

Turn the work so you have the WS side facing you and cast on 13 new sts on the 3 mm / US 2.5 circular needle in addition to the picked up sts using the Italian Cast-On method (make the first and last st of the cast on sts purl sts). Turn work so that the RS side is facing you.

Row 1 (RS): *K1, sl1 wyif* repeat 6 times, k2tog-tbl (knit the last st of the 13 that you just cast on together with one stitch from the picked up sts through the back loops). Turn work.

Row 2 (WS): *Sl1 wyif, k1* repeat to last st, sl1 wyif. Turn work.

Repeat Rows 1-2 across all the picked up sts along the front edges and back neck until there is only 1 of the picked-up sts remaining (until there are only 14 sts remaining on the needle).

Bind off from the RS using the Italian Bind-Off method. When working the last 2 sts of the Italian Bind-Off, seam these 2 sts as if they were 1 st (as if you had knitted them together tbl).

Cosy Coco Hood

LEFT LOWER NECK EDGE

Start by picking up and knitting sts as follows:

Pick up and knit 1 stitch for every row (pick up 14 sts in total) starting at the bottom of the left side (when looking at the hood from the front, RS facing you) until the left side stitch marker that was placed after the neckline shaping, with a 3 mm / US 2.5 circular needle. Cut the yarn.

Join in new yarn and work the double knitted placket. Start from the bottom of the left lower neck edge.

Work as follows:

Turn the work so you have the WS side facing you and cast on 13 new sts on the 3 mm / US 2.5 circular needle in addition to the picked up sts using the Italian Cast-On method (make the first and last st of the cast on sts purl sts). Turn work so that the RS side is facing you.

Row 1 (RS): *K1, sl1 wyif* repeat 6 times, k2tog-tbl (knit the last st of the 13 that you just cast on together with one stitch from the picked up sts through the back loops). Turn work.

Row 2 (WS): *Sl1 wyif, k1* repeat to last st, sl1 wyif. Turn work.

Repeat Rows 1-2 across all the picked up sts along the front edges and back neck until there is only 1 of the picked-up sts remaining (until there are only 14 sts remaining on the needle).

Bind off from the RS using the Italian Bind-Off method. When working the last 2 sts of the Italian Bind-Off, seam these 2 sts as if they were 1 st (as if you had knitted them together tbl).

DOUBLE KNITTED RIBBON

Stitches are first picked up around the face opening with a 3 mm / US 2.5 circular needle.

Then new yarn is picked up and the left side of the ribbon band is worked separately in double knitting with 3 mm / US 2.5 DPNS and then attached to the hood to be worked along the face opening, and then right side ribbon band is continued to be worked with 3 mm / US 2.5 DPNS.

Start by picking up and knitting sts around the face opening as follows:

Starting at the seam between the Lower Left Neck Edge and the hood face opening (when looking at the hood from the front, RS facing you), pick up and knit 1 stitch for every row with a 3 mm / US 2.5 circular needle along the left side face opening, then pick up and knit 1 stitch for every stitch along the top of the head, and lastly pick up and knit 1 stitch for every row along the right side face opening edge until the seam between the hood and Lower Right Neck Edge.

Cut the yarn.

Note! The Lower Neck Edges are going to be overlapping when the press buttons are closed so sts aren't picked up along them.

Cosy Coco Hood

With new yarn, cast on 15 sts with the Italian Cast-On method (make the first and last st of the cast on sts purl sts) on 3 mm / US 2.5 DPNs and work as follows:

Row 1 (RS): K1, *sl1 wyif, k1* repeat to end. Turn work.

Row 2 (WS): Sl1 wyif, *k1, sl1 wyif* repeat to end. Turn work.

Repeat Rows 1-2 until the double knitted ribbon measures 52 cm / 20.5".

ATTACHING THE DOUBLE KNITTED RIBBON TO THE HOOD

Next, the double knitted ribbon is continued and attached to the hood on the left side (when looking at the hood from the front).

Work as follows:

Row 1 (RS): *K1, sl1 wyif* repeat 7 times, k2tog-tbl (knit the last st of the double knitted ribbon together with one stitch from the picked up sts through the back loops). Turn work.

Row 2 (WS): *Sl1 wyif, k1* repeat to last st, sl1 wyif. Turn work.

Repeat Rows 1-2 across all the picked up sts along the face opening until all of the picked up sts are worked.

Then continue working the right side double knitted ribbon as follows:

Row 1 (RS): K1, *sl1 wyif, k1* repeat to end. Turn work.

Row 2 (WS): Sl1 wyif, *k1, sl1 wyif* repeat to end. Turn work.

Repeat Rows 1-2 until the double knitted ribbon measures 52 cm / 20.5".

Bind off from the RS using the Italian Bind-Off method.

FINISHING

Weave in all ends on the wrong side of the hood. Soak the hood in cold to lukewarm water to help the Honeycomb stitch fabric to soften and open up. You can also gently stretch the double knitted ribbons for even more length if you desire. Lay flat to dry.

Spread out the bottom piece of the 2 press buttons evenly along the double knitted Lower Left Neck Edge and attach by hand sewing with the same yarn you worked the hood in. Then attach the other corresponding part of the 2 press buttons on the frontside of the other double knitted edge making sure the buttons on the front and back align with each other.

The Cosy Coco Hood is done and ready to wear!

Cosy Coco Hood

FINISHING

Weave in all ends on the wrong side of the hood. Soak the hood in cold to lukewarm water to help the Honeycomb stitch fabric to soften and open up. You can also gently stretch the double knitted ribbons for even more length if you desire. Lay flat to dry.

Spread out the bottom piece of the 2 press buttons evenly along the double knitted Lower Left Neck Edge and attach by hand sewing with the same yarn you worked the hood in. Then attach the other corresponding part of the 2 press buttons on the frontside of the other double knitted edge making sure the buttons on the front and back align with each other.

The Cosy Coco Hood is done and ready to wear!



Hope you enjoyed this pattern!

You can use the hashtag **#cosycocohood** and **#knitwithkika** when you post on Instagram so that we can admire your work :)

If you have any questions, please send them to support@kutovakika.com

Cosy Coco Hood

CHART C

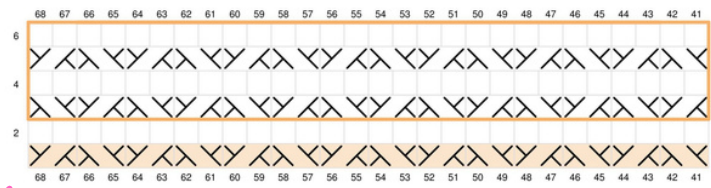


CHART D

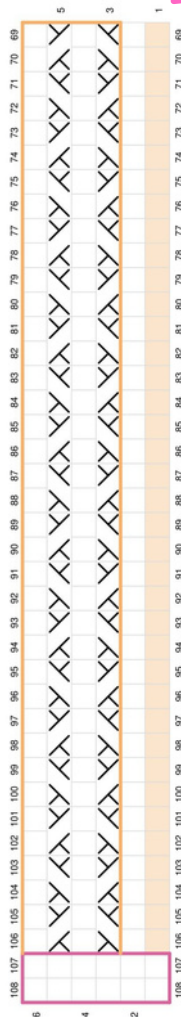


CHART A

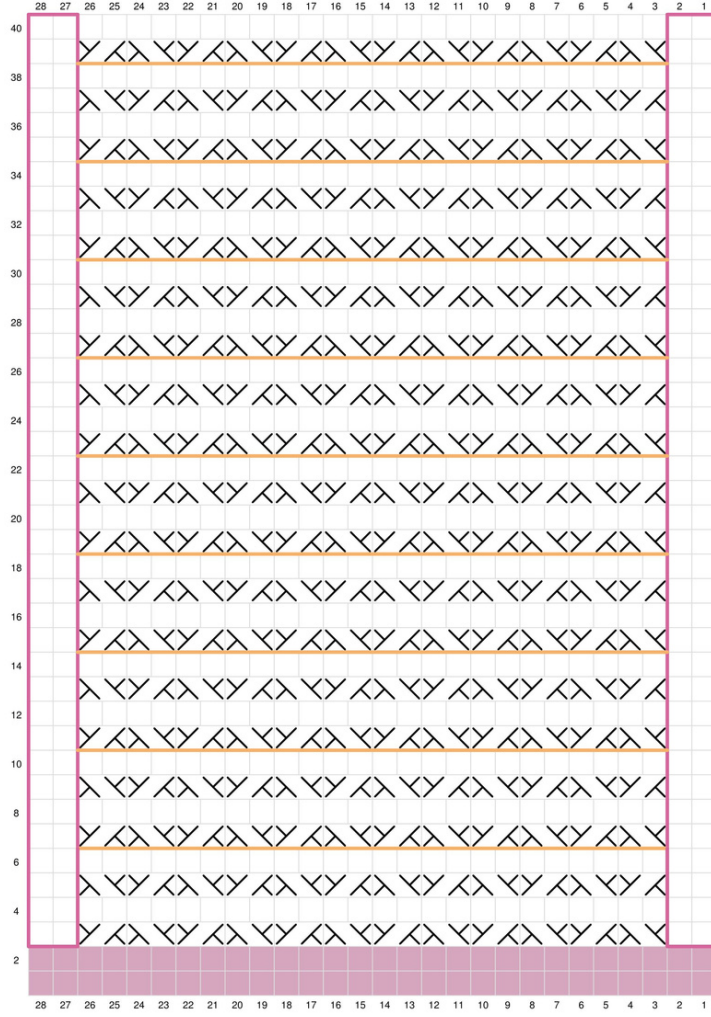
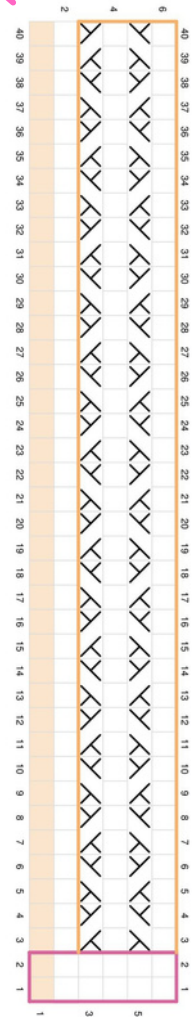


CHART B



Begin here

Join new yarn and
pick up stitches here

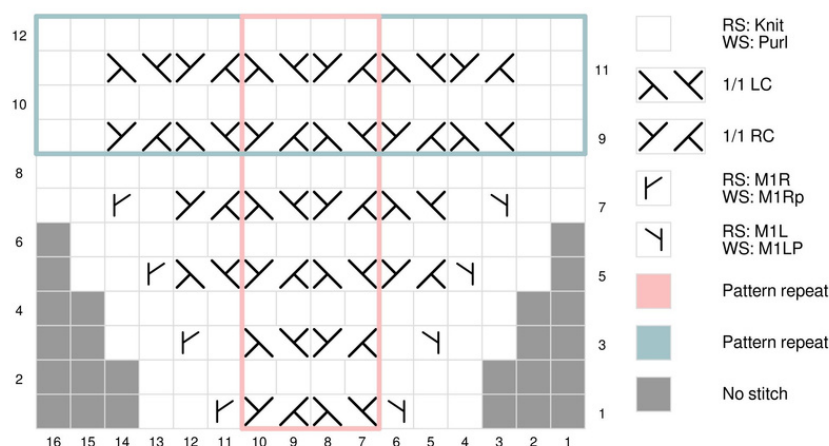
KEY

- Legend for the pattern symbols:

 - RS: Knit
 - WS: Purl
 - 1/1 LC
 - 1/1 RC
 - Edge stitches
 - Pattern repeat
 - SetUp Rows
 - Pick up and knit stitches
 - 1/1 RC
 - 1/1 LC

Cosy Coco Hood

CHART E



ABBREVIATIONS

1/1 LC = 1/1 left cross cable, worked with or without a cable needle or DPN.

Cable or DPN method: Transfer one stitch onto the cable needle or DPN and keep in front of work, knit the next stitch, then knit the stitch from the cable needle or DPN.

Without a cable needle or DPN: Worked over 2 sts: knit the second stitch from the left needle from the back of the work, then without dropping the second stitch, knit the first stitch of the left needle from the front. Drop the first and second stitch from the left needle at the same time. The stitches have been twisted.

1/1 RC = 1/1 right cross cable, worked with or without a cable needle or DPN.

Cable or DPN method: Transfer one stitch onto the cable needle or DPN and move to the back of work, knit the next stitch, then knit the stitch from the cable needle or DPN.

Without a cable needle or DPN: Worked over 2 sts: knit the second stitch from the left needle from the front, then without dropping the second stitch, knit the first stitch of the left needle from the front. Drop the first and second stitch from the left needle at the same time. The stitches have been twisted.

DPN = double pointed needle

K = knit

M1L = make 1 left (left-leaning increase), knit the strand between two sts by inserting the left needle from front to back and knit the stitch twisted (through the back loop). (*1 st increased*)

M1R = make 1 right (right-leaning increase), knit the strand between two stitches by inserting the left needle from back to front and knit the stitch (through the front loop). (*1 st increased*)

P = purl

rep = repeat

RS = right side

WS = wrong side

Sl1 wyif = slip one with yarn in front. Bring the yarn between the right and left needle to the front, slip the next stitch purlwise from the left to the right needle, and bring the yarn between the right and left needle to the back of the work.