



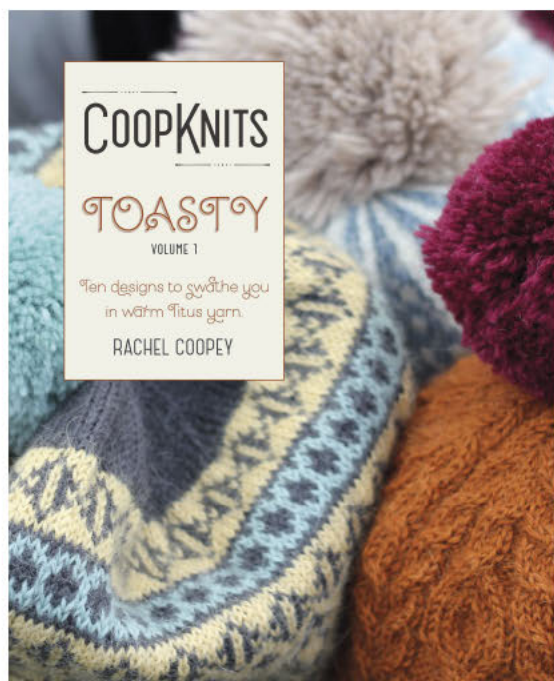
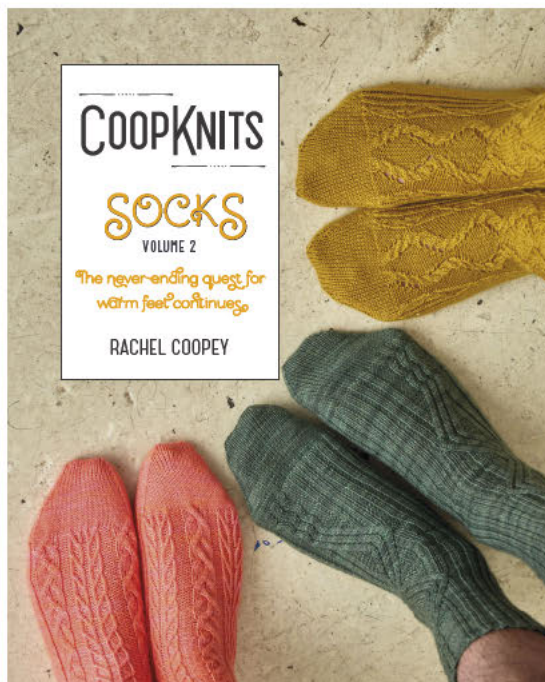
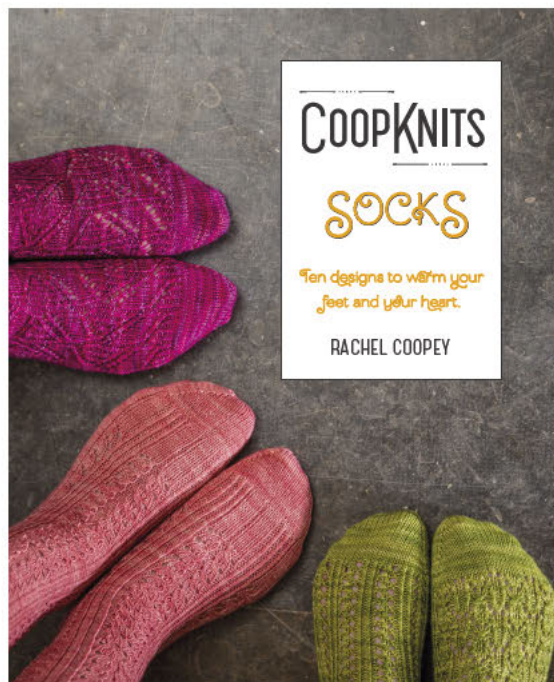
COOPKNITS

TOASTY

VOLUME 2

Nine accessories to keep
you wrapped in Titus yarn.

RACHEL COOPEY



ALSO FROM COOP KNITS:

Coop Knits Socks VOLUME 1

Ten sock designs to warm your feet and your heart.

Coop Knits Socks VOLUME 2

The never-ending quest for warm feet continues.

Coop Knits Toasty VOLUME 1

Ten accessory designs to swathe you in warm Titus yarn.

On sale at www.coopknits.co.uk and www.ravelry.com.

Coop Knits printed books come with a code allowing you to download a free digital copy in pdf format.

DIGITAL DOWNLOAD CODE

Thank you for buying Coop Knits Toasty Volume 2.

To download your free digital copy, in pdf format, use the code on the right. Choose 'Buy it now' or 'Add to cart' from

<http://www.ravelry.com/redeem/rachel-coopey-designs>,

then choose 'use a coupon code', enter the code and complete the checkout. Your code is valid for one download.



COOPKNITS

TOASTY

VOLUME 2

RACHEL COOPEY



16



22



26



32



36



40

44



48

54



Contents!

FEATURES

- 5 Introduction
- 6 Toasty VOLUME 2: Gallery
- 58 How to... **Long tail cast on**
- 59 How to... **Kitchener stitch**
- 60 Words of wisdom
- 61 A good yarn

PATTERNS

- 16 Kettlesing hat
- 22 Binsoe hat
- 26 Low Laithe hat
- 32 Hebden cowl
- 36 Hebden hat
- 40 Birstwith hat
- 44 Sawley hat
- 48 Hartwith hat
- 54 Padsid mittens



COOPKNITS

CREDITS

Publisher & Author:	Rachel Coopey
Technical Editor:	Jen Arnall-Culliford
Art & Production:	Nic Blackmore
Photography:	Jesse Wild
Assistant Technical Editor:	Jim Arnall-Culliford
Models:	Nez Sigorni Lee Wilding

Yarn support: Baa Ram Ewe Titus 4ply

COOPKNITS TOASTY VOLUME 2

First published in 2015 by Rachel Coopey

© Copyright Rachel Coopey 2015

All rights reserved

Images in this publication

© Jesse Wild 2015

ALL RIGHTS RESERVED

The entire contents of this book and the patterns therein are subject to copyright. The purchase of this book allows you to use it for personal, non-commercial purposes. Items produced using the instructions within this book are not licensed to be sold for profit.

No part of this book may be reproduced, stored in a retrieval system or transmitted in any form or by any means without prior written permission from the publisher.

Printed in the UK.

British Library Cataloguing in Publication Data:

A catalogue record for this book is available from the British Library. ISBN-978-0-9576216-3-3



Introduction

Here we are again with a second collection of accessories knitted with Titus yarn. I continue my love affair with both Yorkshire and Titus yarn, and working with Baa Ram Ewe has enabled me to make more trips to the beautiful hills and dales of the area. Every time I arrive, I take a moment to take a breath; as I breathe it out, a weight lifts. Everyone has places that instantly make them happier and Yorkshire is one of mine.

Since **Toasty Volume One** was published I have worn the Bedale hat I knitted for myself nearly every day – it's a rare luxury for me to have a hat that is not a sample and can be worn and stuffed into pockets and bags with joyful abandon, without trying to keep it pristine for display at events and shows. My Bedale hat in Titus yarn has handled all such abuse with poise and grace, and still looks like it came off the needles last week.

Titus remains one of my favourite yarns for knitting accessories and, after my first love (socks), hats are my favourite things to knit and wear. I love hats for many reasons; they keep me warm and dry, and can make a bad-hair day disappear. Hats are quick to knit and make great gifts. I am very much in the pro-pompom camp but you can, of course, leave the pompoms off any of the hats in this book (although I hope you don't).

Rachel_x

Kettlesing hat
page 16





Sawley hat
page 44

Binsoe hat
page 22



Low Laithe hat
page 26







Hebden hat
page 36
Hebden cowl
page 32
Padside mittens
page 54

Start with hat
page 48





Birstwith hat
page 40







oft blue columns of rib and tiny cables evolve into a decorative cabled crown pattern that tops off this comfortably slouchy hat.

Kettlesing!





Kettlesing

SIZES

Small (Medium, Large)

To fit head circumference: 53.5 (58.5, 63.5) cm [21 (23, 25) in]

Brim circumference: 49.5 (54, 58.5) cm [19½ (21¼, 23) in]

Hat body circumference: 56 (61, 66) cm [22 (24, 26) in]

Length from brim to crown: 24cm [9½in]

Designed to have 2.5-5cm [1-2in] of negative ease in the brim and 2.5-5cm [1-2in] positive ease in the body of the hat.

Baa Ram Ewe Titus 4ply (50% Wensleydale Longwool, 20% Bluefaced Leicester wool, 30% British alpaca; 320m [350yds] per 100g skein)
Aire 1 x 100g skein
Yarn for pompom (optional) shown in White Rose

NEEDLES & NOTIONS

2.5mm [UK 13-12/US 1.5] circular needle, 40cm [16in] long or 2.5mm [UK 13-12/US 1.5] set of five DPNs, or size needed to get correct tension in Brim pattern

2.75mm [UK 12/US 2] circular needle, 40cm [16in] long and 2.75mm [UK 12/US 2] set of five DPNs, or size needed to get correct tension in Body pattern

Cable needle

Stitch marker

Tapestry needle

TENSION

36 sts and 44 rounds = 10cm [4in] over Brim pattern using smaller needles

32 sts and 40 rounds = 10cm [4in] over Brim and Body patterns using larger needles

ABBREVIATIONS

DPNs	Double-pointed needles
k	Knit
k2tog	Knit next 2 stitches together (1 stitch decreased)
p	Purl
rem	Remain(s)/remaining
rep	Repeat(s)/repeating
ssk	Slip 2 stitches individually as if to knit, then knit those 2 stitches together through the back loops (1 stitch decreased)
st(s)	Stitch(es)
tbl	Through the back loops
WS	Wrong side
1/1 RC	Slip next st to cable needle and place at back of work, k1; then k1 from cable needle
1/1 LC	Slip next st to cable needle and place at front of work, k1; then k1 from cable needle
2/1 RC	Slip next st to cable needle and place at back of work, k2; then k1 from cable needle
2/1 LC	Slip next 2 sts to cable needle and place at front of work, k1; then k2 from cable needle
2/1 RPC	Slip next st to cable needle and place at back of work, k2; then p1 from cable needle
2/1 LPC	Slip next 2 sts to cable needle and place at front of work, p1; then k2 from cable needle

INSTRUCTIONS

BRIM

With smaller needles cast on 176 (192, 208) sts. Join to work in the round, being careful not to twist. Place marker for start of round.

The following instructions are also shown on chart A, where all rows are read from right to left and the chart is repeated 11 (12, 13) times across the round.

Rounds 1-3: [K1, p1, k1 tbl, p3, k4, p3, k1 tbl, p1, k1] 11 (12, 13) times.

Round 4: [K1, p1, k1 tbl, p3, 1/1 RC, 1/1 LC, p3, k1 tbl, p1, k1] 11 (12, 13) times.

Last 4 rounds set Brim pattern. Rep last 4 rounds a further 4 times (20 rounds).

BODY

Change to larger needles.

Rep last 4 rounds a further 9 times (36 rounds).

CROWN

While working crown decreases, change to DPNs when needed.

The following instructions (Body pattern) are also shown on chart B, where all rows are read from right to left and the chart is repeated 11 (12, 13) times across the round.



Charts



KEY








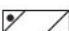

- | | |
|--|--|
| <input type="checkbox"/> knit |  1/1 RC: Slip next st to cable needle and place at back of work, k1; then k1 from cable needle |
| <input checked="" type="checkbox"/> purl |  1/1 LC: Slip next st to cable needle and place at front of work, k1; then k1 from cable needle |
|  k1 tbl |  2/1 RC: Slip next st to cable needle and place at back of work, k2; then k1 from cable needle |
|  ssk |  2/1 LC: Slip next 2 sts to cable needle and place at front of work, k1; then k2 from cable needle |
|  k2tog |  2/1 RPC: Slip next st to cable needle and place at back of work, k2; then p1 from cable needle |
| |  2/1 LPC: Slip next 2 sts to cable needle and place at front of work, p1; then k2 from cable needle |

CHART B

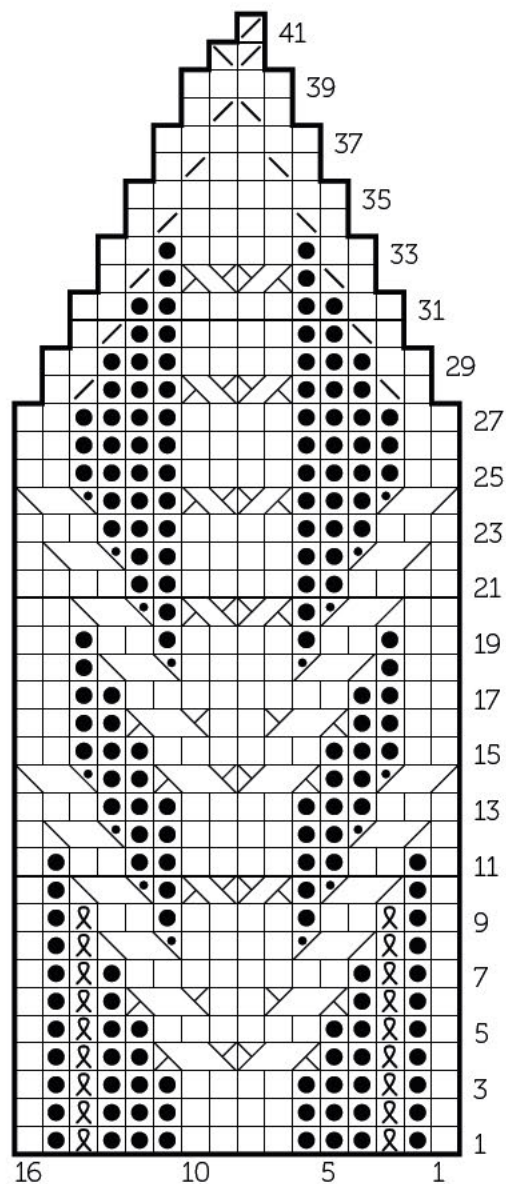
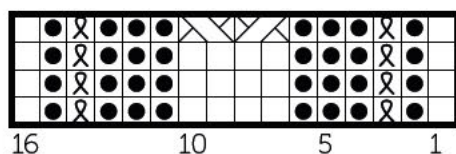


CHART A



Pattern continues:

Rounds 1-3: *K1, p1, k1 tbl, p3, k4, p3, k1 tbl, p1, k1; rep from * to end.
Round 4: *K1, p1, k1 tbl, p2, 2/1 RC, 2/1 LC, p2, k1 tbl, p1, k1; rep from * to end.
Round 5: *K1, p1, k1 tbl, p2, k6, p2, k1 tbl, p1, k1; rep from * to end.
Round 6: *K1, p1, k1 tbl, p1, 2/1 RC, k2, 2/1 LC, p1, k1 tbl, p1, k1; rep from * to end.
Round 7: *K1, p1, k1 tbl, p1, k8, p1, k1 tbl, p1, k1; rep from * to end.
Round 8: *K1, p1, k1 tbl, 2/1 RPC, k4, 2/1 LPC, k1 tbl, p1, k1; rep from * to end.
Round 9: *K1, p1, k1 tbl, k2, p1, k4, p1, k2, k1 tbl, p1, k1; rep from * to end.
Round 10: *K1, p1, 2/1 RPC, p1, 1/1 RC, 1/1 LC, p1, 2/1 LPC, p1, k1; rep from * to end.
Round 11: *K1, p1, k2, p2, k4, p2, k2, p1, k1; rep from * to end.
Round 12: *K1, 2/1 RPC, p2, k4, p2, 2/1 LPC, k1; rep from * to end.
Round 13: *K3, p3, k4, p3, k3; rep from * to end.
Round 14: *2/1 RPC, p2, 2/1 RC, 2/1 LC, p2, 2/1 LPC; rep from * to end.
Round 15: *K2, p3, k6, p3, k2; rep from * to end.
Round 16: *K2, p2, 2/1 RC, k2, 2/1 LC, p2, k2; rep from * to end.
Round 17: *K2, p2, k8, p2, k2; rep from * to end.
Round 18: *K2, p1, 2/1 RPC, k4, 2/1 LPC, p1, k2; rep from * to end.
Round 19: *[K2, p1] twice, k4, [p1, k2] twice; rep from * to end.
Round 20: *K2, 2/1 RPC, p1, 1/1 RC, 1/1 LC, p1, 2/1 LPC, k2; rep from * to end.
Round 21: *[K4, p2] twice, k4; rep from * to end.
Round 22: *K1, 2/1 RPC, p2, k4, p2, 2/1 LPC, k1; rep from * to end.
Round 23: *K3, p3, k4, p3, k3; rep from * to end.
Round 24: *2/1 RPC, p3, 1/1 RC, 1/1 LC, p3, 2/1 LPC; rep from * to end.
Rounds 25-27: *K2, p4, k4, p4, k2; rep from * to end.
Round 28: *K1, ssk, p3, 1/1 RC, 1/1 LC, p3, k2tog, k1; rep from * to end. 154 (168, 182) sts.



Round 29: *K2, p3, k4, p3, k2; rep from * to end.
Round 30: *K1, ssk, p2, k4, p2, k2tog, k1; rep from * to end. 132 (144, 156) sts.
Round 31: *K2, p2, k4, p2, k2; rep from * to end.
Round 32: *K1, ssk, p1, 1/1 RC, 1/1 LC, p1, k2tog, k1; rep from * to end. 110 (120, 130) sts.
Round 33: *K2, p1, k4, p1, k2; rep from * to end.
Round 34: *K1, ssk, k4, k2tog, k1; rep from * to end. 88 (96, 104) sts.
Round 35: Knit.
Round 36: *K1, ssk, k2, k2tog, k1; rep from * to end. 66 (72, 78) sts.
Round 37: Knit.

Round 38: *K1, ssk, k2tog, k1; rep from * to end. 44 (48, 52) sts.
Round 39: Knit.
Round 40: *K2tog, ssk; rep from * to end. 22 (24, 26) sts.
Round 41: *K2tog; rep from * to end. 11 (12, 13) sts.

FINISHING

Cut yarn, leaving a 15cm [6in] tail, draw the tail through the rem sts and fasten off to WS. Weave in ends. Soak the hat in tepid water for approx. 20 minutes. Then gently squeeze out excess water and leave to dry over a suitable hat form, such as a balloon.
Optional: Make pompom and attach firmly to crown.



「Bingsoe」



oathland, Bramley Baths and Parkin are the three building blocks for the tiled colourwork in this relaxed, slouchy hat



Bingde

SIZES

Small (Medium, Large)

To fit head circumference: 53.5 (57, 62) cm [21 (22½, 24½) in]

Brim circumference: 49.5 (54, 58.5) cm [19½ (20¼, 23) in]

Hat body circumference: 56 (61, 66) cm [22 (24, 26) in]

Length from brim to crown: 23.5cm [9¼in]

Designed to have 2.5-5cm [1-2in] of negative ease in the brim and 2.5-5cm [1-2in] positive ease in the body of the hat.

YARN

Baa Ram Ewe Titus 4ply (50% Wensleydale Longwool, 20% Bluefaced Leicester wool, 30% British alpaca; 320m [350yds] per 100g skein)

Yarn A: Goathland 1 x 100g skein

Yarn B: Bramley Baths 1 x 100g skein

Yarn C: Parkin 1 x 100g skein

NEEDLES & NOTIONS

2.5mm [UK 13-12/US 1.5] circular needle, 40cm [16in] long or 2.5mm [UK 13-12/US 1.5] set of five DPNs, or size needed to get correct tension in 2 x 2 Twisted Rib pattern

2.75mm [UK 12/US 2] circular needle, 40cm [16in] long and 2.75mm [UK 12/US 2] set of five DPNs, or size needed to get correct tension in Colourwork st st pattern

Stitch marker

Tapestry needle

TENSION

36 sts and 48 rounds = 10cm [4in] over 2 x 2

Twisted Rib pattern using smaller needles

32 sts and 40 rounds = 10cm [4in] over Colourwork st st using larger needles



KEY

- Using yarn A (Goathland); knit
- Using yarn B (Bramley Baths); knit
- Using yarn C (Parkin); knit
- Using yarn indicated; ssk
- Using yarn indicated; k2tog
- Using yarn indicated; CDD: Centred double decrease. Slip 2 sts together knitwise, k1, pass 2 slipped sts over

Binsoe

ABBREVIATIONS

- CDD** Slip 2 stitches together knitwise, knit 1, pass 2 slipped stitches over (2 stitches decreased)
- DPNs** Double-pointed needles
- k** Knit
- k2tog** Knit next 2 stitches together (1 stitch decreased)
- p** Purl
- rem** Remain(s)/remaining
- rep** Repeat(s)/repeating
- ssk** Slip 2 stitches individually as if to knit, then knit those 2 stitches together through the back loops (1 stitch decreased)
- st(s)** Stitch(es)
- st st** Stocking stitch [US Stockinette stitch]
- tbl** Through the back loops
- WS** Wrong side

INSTRUCTIONS

BRIM

With yarn A and smaller needles cast on 176 (192, 208) sts. Join to work in the round, being careful not to twist. Place marker for start of round.

Round 1: *k2 tbl, p2; rep from * to end. Last round sets 2 x 2 Twisted Rib pattern. Rep last round a further 19 times (20 rounds).

BODY

Change to larger needles. Work from chart as follows, using a stranded knitting technique, and joining in colours as required:

Round 1: Reading chart from right to left, [work 16 sts from row 1 of chart A] 11 (12, 13) times.

Last round sets chart A Colourwork st st pattern. Continue to work from chart A until it has been completed 3 times (42 rounds).

Round 43: Reading chart from right to left, [work 16 sts from row 1 of chart B] 11 (12, 13) times.

Last round sets chart B Colourwork st st pattern. Continue to work from chart B until row 7 has been completed (7 rounds).

CROWN

While working crown decreases, change to DPNs when needed.

Round 50: Reading chart from right to left, [work across row 1 of chart C] 11 (12, 13) times. Last round sets chart C Colourwork st st pattern. Continue to work from chart until all 26 rounds have been completed. 11 (12, 13) sts.

FINISHING

Cut yarn, leaving a 15cm [6in] tail, draw the tail through the rem sts and fasten off to WS. Weave in ends. Soak the hat in tepid water for approx. 20 minutes. Then gently squeeze out excess water and leave to dry over a suitable hat form, such as a balloon. Optional: Make pompom from rem yarn and attach firmly to crown.

CHART C

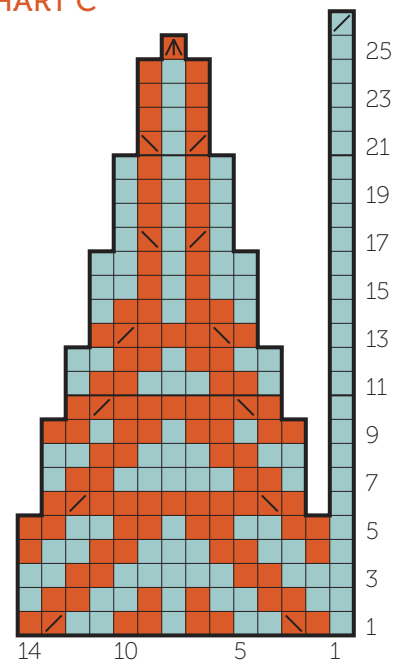


CHART B

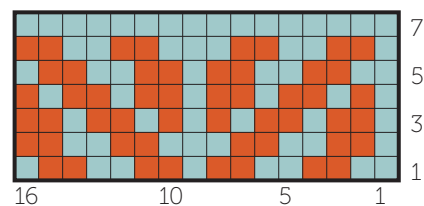
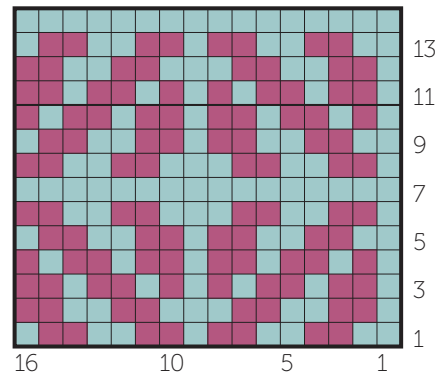


CHART A





even shades of Titus in repeating bands of simple motifs make this slouchy hat extra-toasty for autumn.

Low Laithe





Low Laithe

SIZES

Small (Medium, Large)

To fit head circumference: 53.5 (58.5, 63.5) cm [21 (23, 25) in]

Brim circumference: 49.5 (54, 58.5) cm [19½ (21¼, 23) in]

Hat body circumference: 56 (61, 66) cm [22 (24, 26) in]

Length from brim to crown: 22.5cm [8¾in]

Designed to have 2.5-5cm [1-2in] negative ease in the brim and 2.5-5cm [1-2in] positive ease in the body of the hat.

YARN

Baa Ram Ewe Titus 4ply (50% Wensleydale Longwool, 20% Bluefaced Leicester wool, 30% British alpaca; 32m [35yds] per 10g mini-skein)

Yarn A: Yorkstone 3 x 10g mini-skeins

Yarn B: Aire 1 x 10g mini-skein

Yarn C: Parkin 1 x 10g mini-skein

Yarn D: White Rose 1 x 10g mini-skein

Yarn E: Chevin 1 x 10g mini-skein

Yarn F: Coal 1 x 10g mini-skein

Yarn G: Filey 1 x 10g mini-skein

Yarn for pompom (optional) shown in Eccup.

NEEDLES & NOTIONS

2.5mm [UK 13-12/US 1.5] circular needle, 40cm [16in] long or 2.5mm [UK 13-12/US 1.5] set of five DPNs, or size needed to get correct tension in 2 x 2 Rib pattern

2.75mm [UK 12/US 2] circular needle, 40cm [16in] long and 2.75mm [UK 12/US 2] set of five DPNs, or size needed to get correct tension in Colourwork st st pattern

Stitch marker

Tapestry needle



TENSION

36 sts and 48 rounds = 10cm [4in] over 2 x 2 Rib pattern using smaller needles
32 sts and 40 rounds = 10cm [4in] over Colourwork st st pattern using larger needles

ABBREVIATIONS

DPNs	Double-pointed needles
k	Knit
k2tog	Knit next 2 stitches together (1 stitch decreased)
p	Purl
rem	Remain(s)/remaining
rep	Repeat(s)/repeating
ssk	Slip 2 stitches individually as if to knit, then knit those 2 stitches together through the back loops (1 stitch decreased)
st(s)	Stitch(es)
st st	Stocking stitch [US: Stockinette stitch]
WS	Wrong side

INSTRUCTIONS

BRIM

With yarn A and smaller needles, cast on 176 (192, 208) sts. Join to work in the round, being careful not to twist. Place marker for start of round.

Round 1: *K2, p2; rep from * to end. Last round sets 2 x 2 Rib pattern. Rep last round a further 15 times (16 rounds).

BODY

Change to larger needles. Work from chart as follows, using a stranded knitting technique, and joining in colours as required:

Round 1: Reading chart from right to left, [work 8 sts from row 1 of chart A] 22 (24, 26) times.
Last round sets Colourwork st st pattern. Continue to work from chart as set until chart row 23 is complete. Then work chart rows 1-23 once more (46 rounds).

CROWN

Change to yarn A and knit one round. The crown decreases are worked in yarn A only.

While working crown decreases, change to DPNs when needed.

The following instructions are also shown on chart B (where the chart is repeated a total of 11 (12, 13) times across each round).

Round 1: *P2, k2; rep from * to end.

Round 2: *[P2, k2] 3 times, p1, k2tog, k1; rep from * to end. 165 (180, 195) sts rem.

Round 3: *[P2, k2] 3 times, p1, k2; rep from * to end.

Round 4: *[P2, k2] 3 times, k2tog, k1; rep from * to end. 154 (168, 182) sts rem.

Round 5: *[P2, k2] twice, p2, k4; rep from * to end.

Round 6: *[P2, k2] twice, p2, k1, k2tog, k1; rep from * to end. 143 (156, 169) sts rem.

Round 7: *[P2, k2] twice, p2, k3; rep from * to end.

Charts



KEY

- ☐ knit
- ☒ purl
- ☒ ssk
- ☒ k2tog
- ☒ Using yarn B (Aire); knit
- ☒ Using yarn C (Parkin); knit
- ☒ Using yarn D (White Rose); knit
- ☒ Using yarn E (Chevin); knit
- ☒ Using yarn F (Coal); knit
- ☒ Using yarn G (Filey); knit

CHART B

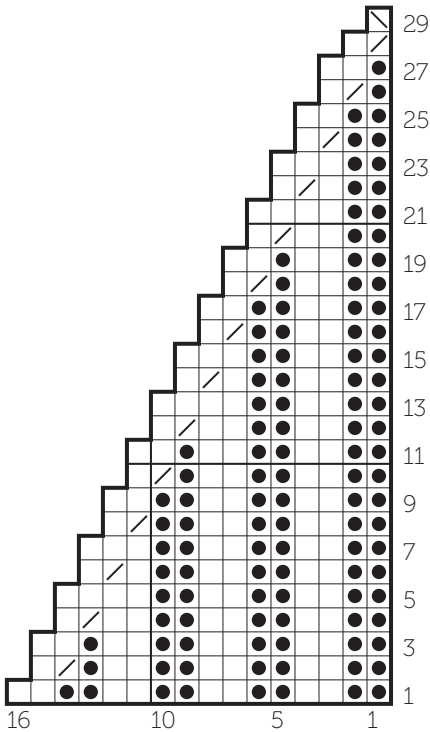
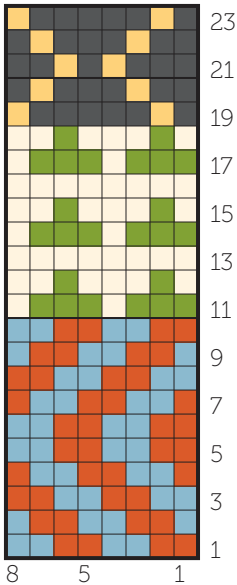


CHART A



Low Laithe

Pattern continues:

Round 8: *P2, k2] twice, p2, k2tog, k1; rep from * to end. 132 (144, 156) sts rem.

Round 9: *P2, k2; rep from * to end.

Round 10: *P2, k2] twice, p1, k2tog, k1; rep from * to end. 121 (132, 143) sts rem.

Round 11: *P2, k2] twice, p1, k2; rep from * to end.

Round 12: *P2, k2] twice, k2tog, k1; rep from * to end. 110 (120, 130) sts rem.

Round 13: *P2, k2, p2, k4; rep from * to end.

Round 14: *P2, k2, p2, k1, k2tog, k1; rep from * to end. 99 (108, 117) sts rem.

Round 15: *P2, k2, p2, k3; rep from * to end.

Round 16: *P2, k2, p2, k2tog, k1; rep from * to end. 88 (96, 104) sts rem.

Round 17: *P2, k2; rep from * to end.

Round 18: *P2, k2, p1, k2tog, k1; rep from * to end. 77 (84, 91) sts rem.

Round 19: *P2, k2, p1, k2; rep from * to end.

Round 20: *P2, k2, k2tog, k1; rep from * to end. 66 (72, 78) sts rem.

Round 21: *P2, k4; rep from * to end.

Round 22: *P2, k1, k2tog, k1. 55 (60, 65) sts rem.

Round 23: *P2, k3; rep from * to end.

Round 24: *P2, k2tog, k1; rep from * to end. 44 (48, 52) sts rem.

Round 25: *P2, k2; rep from * to end.

Round 26: *P1, k2tog, k1; rep from * to end. 33 (36, 39) sts rem.

Round 27: *P1, k2; rep from * to end.

Round 28: *K2tog, k1; rep from * to end. 22 (24, 26) sts rem.

Round 29: [Ssk] 11 (12, 13) times. 11 (12, 13) sts rem.

FINISHING

Cut yarn, leaving a 15cm [6in] tail, draw the tail through the rem sts and fasten off to WS. Weave in ends. Soak the hat in tepid water for approx. 20 minutes. Then gently squeeze out excess water and leave to dry over a suitable hat form, such as a balloon.

Optional: Make pompom and attach firmly to crown.





Hebden

Cowl!



The Hebden cowl uses four cool shades of Titus in two geometric patterns and is complemented by a nearly-matched hat (page 36).



Hebden Cowl

SIZE

One size only

Circumference: 127cm [50in]

Width: 19.5cm [7¾in]

YARN

Baa Ram Ewe Titus 4ply (50% Wensleydale Longwool, 20% Bluefaced Leicester wool, 30% British alpaca; 320m [350yds] per 100g skein)

Yarn A: Endeavour 1 x 100g skein

Yarn B: Crucible 1 x 100g skein

Yarn C: Coal 1 x 100g skein

Yarn D: Bramley Baths 1 x 100g skein

NEEDLES & NOTIONS

3mm [UK 11/US 2-3] circular needle, 40cm [16in] long or 3mm [UK 11/US 2-3] set of five DPNs, or size needed to get correct tension in Colourwork st st pattern

3-4mm [UK 11-8/US D/3-G/6] crochet hook for provisional cast-on

A small quantity of smooth waste yarn of approx. 4ply weight for provisional cast-on

TENSION

28 sts and 32 rounds = 10cm [4in] over Colourwork st st using 3mm needles

ABBREVIATIONS

DPNs	Double-pointed needles
k	Knit
st st	Stocking stitch [US Stockinette stitch]
st(s)	Stitch(es)

PATTERN NOTES

The garment is knitted in the round, beginning with a provisional cast-on. When the knitting is completed the provisional cast-on is removed and live stitches are then grafted to the cast-on stitches to make a continuous loop.

The mittens pictured here are Padside (page 54).

INSTRUCTIONS

COWL

Using a 3-4mm crochet hook and waste yarn, make a crochet chain 118 sts long. Using yarn A, pick up and knit 108 sts in the bumps on the rear of the crochet chain, leaving 5 sts free at each end. Join to work in the round being careful not to twist. Place marker for start for round.

Work from charts as follows, using a stranded knitting technique, and joining in colours as required:

Round 1: Reading chart from right to left, [work 6 sts from row 1 of chart A] 18 times.

Last round sets chart A Colourwork st st pattern. Continue to work from chart as set until chart A has been completed 4 times, then work row 1 once more (29 rounds).

Round 30: Reading chart from right to left, [work 6 sts from row 1 of chart B] 18 times.

Last round sets chart B Colourwork st st pattern. Continue to work from chart as set until chart B has been completed 3 times, then work row 1 once more (19 rounds).

Round 49: Reading chart from right to left, [work 6 sts from row 1 of chart C] 18 times.

Last round sets Colourwork st st pattern. Continue to work from chart as set until chart C has been completed 3 times (18 rounds).

Round 67: Reading chart from right to left, [work 6 sts from row 1 of chart A] 18 times.

Last round sets chart A Colourwork st st pattern. Continue to work from chart as set until chart A has been completed 5 times, then work row 1 once more (36 rounds).

Work rounds 30-102 a further 2 times.

Next round: Reading chart from right to left, [work 6 sts from row 1 of chart A] 18 times.

Last round sets chart A Colourwork st st pattern. Continue to work from chart as set until row 6 has been completed (6 rounds).

FINISHING

Weave in all ends. Carefully unzip the crochet chain at the cast-on edge, picking up the 108 sts revealed. Ensuring that the loop is not twisted, graft (Kitchener stitch) the cast-on stitches to the live stitches at the other end of the loop using yarn A. Weave in the ends, taking care to neaten the join if required. Soak the cowl in tepid water for approx 20 minutes. Then gently squeeze out excess water and leave to dry flat, having smoothed it in order to shape and even out the stitches.



Charts

KEY

- Using yarn A (Endeavour); knit
- Using yarn B (Crucible); knit
- Using yarn C (Coal); knit
- Using yarn D (Bramley Baths); knit

CHART C

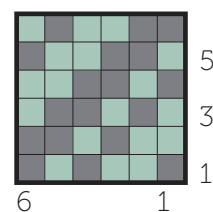


CHART B

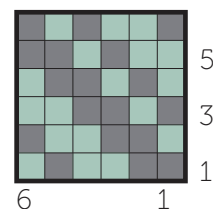
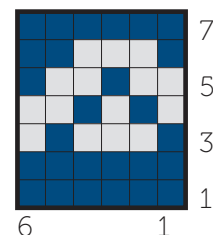


CHART A



Hebden

Hat

Using one of the geometric colourwork patterns from the Hebden cowl, this neat beanie uses subdued shades of blue.







Hebden Hat

SIZES

To fit head circumference: 53.5 (57, 61) cm [21 (22½, 24) in]

Brim circumference: 51 (54, 57.5) cm [20 (21¼, 22¾) in]

Hat body circumference: 57 (61, 65) cm [22½ (24, 25½) in]

Length from brim to crown: 18cm [7in]

Designed to have 2.5-5cm [1-2in] of negative ease in the brim and 2.5-5cm [1-2in] positive ease in the body of the hat.

YARN

Baa Ram Ewe Titus 4ply (50% Wensleydale Longwool, 20% Bluefaced Leicester wool, 30% British alpaca; 320m [350yds] per 100g skein)

Yarn A: Endeavour 1 x 100g skein

Yarn B: Crucible 1 x 100g skein

Yarn D: Bramley Baths 1 x 100g skein

Yarn for pompom (optional), shown in Coal

NEEDLES & NOTIONS

2.5mm [UK 13-12/US 1.5] circular needle, 40cm [16in] long or 2.5mm [UK 13-12/US 1.5] set of five DPNs, or size needed to get correct tension in 2 x 2 Rib pattern

2.75mm [UK 12/US 2] circular needle, 40cm [16in] long and 2.75mm [UK 12/US 2] set of five DPNs, or size needed to get correct tension in Colourwork st st pattern

Stitch marker

Tapestry needle

TENSION

36 sts and 48 rounds = 10cm [4in] over 2 x 2 Rib pattern using smaller needles

32 sts and 40 rounds = 10cm [4in] over Colourwork st st using larger needles

ABBREVIATIONS

DPNs	Double-pointed needles
st st	Stocking stitch [US Stockinette stitch]
st(s)	Stitch(es)
rem	Remain(s)/remaining
rep	Repeat(s)/repeating
k	Knit
p	Purl
k2tog	Knit next 2 stitches together (1 stitch decreased)
WS	Wrong side

INSTRUCTIONS

BRIM

With yarn D and smaller needles cast on 180 (192, 204) sts. Join to work in the round, being careful not to twist. Place marker for start of round.

Round 1: *K2, p2; rep from * to end. Last round sets 2 x 2 Rib pattern. Rep last round a further 17 times (18 rounds).

BODY

Change to larger needles. Work from chart as follows, using a stranded knitting technique, and joining in colours as required:

Round 1: Reading chart from right to left, [work 6 sts from row 1 of chart A] 30 (32, 34) times.

Last round sets Colourwork st st pattern. Continue to work from chart as set until chart A has been completed 5 times (35 rounds).

CROWN

While working crown decreases, change to DPNs when needed. Crown is worked in yarn A only.

Round 1: *K10, k2tog; rep from * to end. 165 (176, 187) sts rem.

Round 2: Knit.

Round 3: *K9, k2tog; rep from * to end. 150 (160, 170) sts rem.

Round 4: Knit.

Round 5: *K8, k2tog; rep from * to end. 135 (144, 153) sts rem.

Round 6: Knit.



Round 7: *K7, k2tog; rep from * to end. 120 (128, 136) sts rem.

Round 8: Knit.

Round 9: *K6, k2tog; rep from * to end. 105 (112, 119) sts rem.

Round 10: Knit.

Round 11: *K5, k2tog; rep from * to end. 90 (96, 102) sts rem.

Round 12: Knit.

Round 13: *K4, k2tog; rep from * to end. 75 (80, 85) sts rem.

Round 14: Knit.

Round 15: *K3, k2tog; rep from * to end. 60 (64, 68) sts rem.

Round 16: Knit.

Round 17: *K2, k2tog; rep from * to end. 45 (48, 51) sts rem.

Round 18: Knit.

Round 19: *K1, k2tog; rep from * to end. 30 (32, 34) sts rem.

Round 20: Knit.

Round 21: *K2tog; rep from * to end. 15 (16, 17) sts rem.

FINISHING

Cut yarn, leaving a 15cm [6in] tail, draw the tail through the rem sts and fasten off to WS. Weave in ends. Soak the hat in tepid water for approx. 20 minutes. Then gently squeeze out excess water and leave to dry over a suitable hat form, such as a balloon.

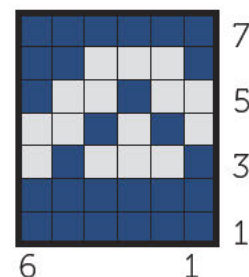
Optional: Make pompom and attach firmly to crown.

Chart

KEY

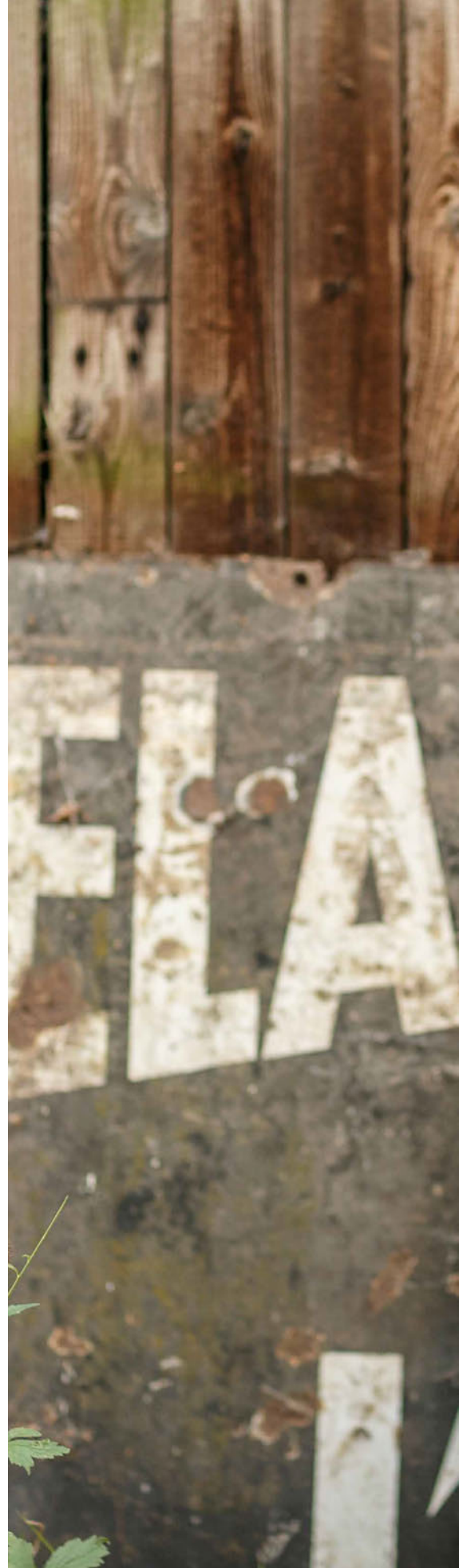
- Using yarn A (Endeavour); knit
- Using yarn B (Crucible); knit

CHART A



Birstwith

Three shades of Titus and three striking colourwork motifs combine to create this banded hat with a relaxed fit.







Birstwith

SIZES

Small (Medium, Large)

To fit head circumference: 53.5 (57, 61) cm [21 (22½, 24) in]

Brim circumference: 51 (54, 57.5) cm [20 (21¼, 22¾) in]

Hat body circumference: 57 (61, 65) cm [22½ (24, 25½) in]

Length from brim to crown: 24cm [9½in]

Designed to have 2.5-5cm [1-2in] of negative ease in the brim and 2.5-5cm [1-2in] positive ease in the body of the hat.

YARN

Baa Ram Ewe Titus 4ply (50% Wensleydale Longwool, 20% Bluefaced Leicester wool, 30% British alpaca; 320m [350yds] per 100g skein)

Yarn A: Parkin 1 x 100g skein

Yarn B: Eccup 1 x 100g skein

Yarn C: Yorkstone 1 x 100g skein

NEEDLES & NOTIONS

2.5mm [UK 13-12/US 1.5] circular needle, 40cm [16in] long or 2.5mm [UK 13-12/US 1.5] set of five DPNs, or size needed to get correct tension in 2 x 2 Rib pattern

2.75mm [UK 12/US 2] circular needle, 40cm [16in] long and 2.75mm [UK 12/US 2] set of five DPNs, or size needed to get correct tension in Colourwork st st pattern

Stitch marker

Tapestry needle

TENSION

36 sts and 48 rounds = 10cm [4in] over 2 x 2 Rib pattern using smaller needles

32 sts and 40 rounds = 10cm [4in] over Colourwork st st using larger needles

ABBREVIATIONS

DPNs	Double-pointed needles
k	Knit
k2tog	Knit next 2 stitches together (1 stitch decreased)
p	Purl
rem	Remain(s)/remaining
rep	Repeat(s)/repeating
st(s)	Stitch(es)
st st	Stocking stitch [US Stockinette stitch]
WS	Wrong side

INSTRUCTIONS

BRIM

With yarn A and smaller needles cast on 180 (192, 204) sts. Join to work in the round, being careful not to twist. Place marker for start of round.

Round 1: *K2, p2; rep from * to end. Last round sets 2 x 2 Rib pattern. Rep last round a further 15 times (16 rounds).

BODY

Change to larger needles. Work from chart as follows, using a stranded knitting technique, and joining in colours as required:

Round 1: Reading chart from right to left, [work 6 sts from row 1 of chart] 30 (32, 34) times.

Last round sets Colourwork st st pattern. Continue to work from chart as set until chart row 34 is complete. Then work chart rows 1-27 once more (61 rounds).

CROWN

While working crown decreases, change to DPNs when needed.

Round 1: Change to yarn A, *k10, k2tog; rep from * to end. 165 (176, 187) sts rem.

Round 2: Knit.

Round 3: Change to yarn B, *k9, k2tog; rep from * to end. 150 (160, 170) sts rem.

Round 4: Knit.

Round 5: Change to yarn A, *k8, k2tog; rep from * to end. 135 (144, 153) sts rem.

Round 6: Knit.

Round 7: Change to yarn B, *k7, k2tog; rep from * to end. 120 (128, 136) sts rem.

Round 8: Knit.

Round 9: Change to yarn A, *k6, k2tog; rep from * to end. 105 (112, 119) sts rem.

Round 10: Knit.

Round 11: Change to yarn B, *k5, k2tog; rep from * to end. 90 (96, 102) sts rem.

Round 12: Knit.

Round 13: Change to yarn A, *k4, k2tog; rep from * to end. 75 (80, 85) sts rem.

Round 14: Knit.

Round 15: Change to yarn B, *k3, k2tog; rep from * to end. 60 (64, 68) sts rem.

Round 16: Knit.

Round 17: Change to yarn A, *k2, k2tog; rep from * to end. 45 (48, 51) sts rem.

Round 18: Knit.

Round 19: Change to yarn B, *k1, k2tog; rep from * to end. 30 (32, 34) sts rem.

Round 20: Knit.

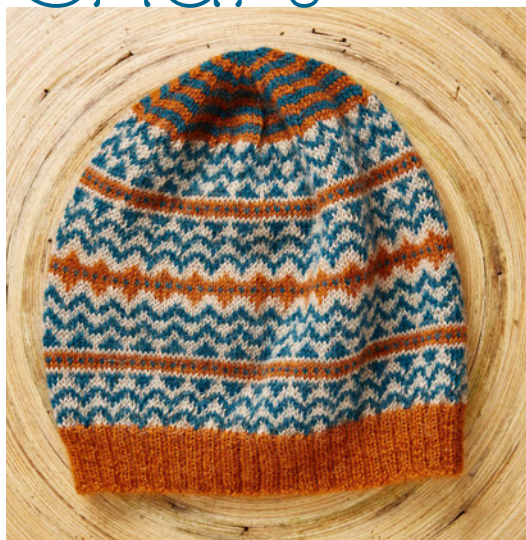
Round 21: *K2tog; rep from * to end. 15 (16, 17) sts rem.

FINISHING

Cut yarn, leaving a 15cm [6in] tail, draw the tail through the rem sts and fasten off to WS. Weave in ends. Soak the hat in tepid water for approx 20 minutes. Then gently squeeze out excess water and leave to dry over a suitable hat form, such as a balloon.

Optional: Make pompom from rem yarn and attach firmly to crown.

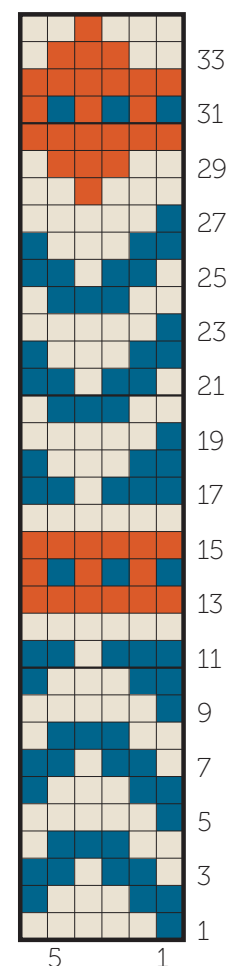
Chart



KEY

- Using yarn A (Parkin); knit
- Using yarn B (Eccup); knit
- Using yarn C (Yorkstone); knit

CHART A





「Sawley」



The delicate silver-grey background of this slouchy hat highlights jazzy motifs and a wonderful decreasing crown pattern.



Sawley

SIZES

Small (Medium, Large)

To fit head circumference: 53.5 (59.5, 66) cm [21 (23½, 26) in]

Brim circumference: 51 (56.5, 62) cm [20 (22¼, 24½) in]

Hat body circumference: 57 (63.5, 70) cm [22½ (25, 27½) in]

Length from brim to crown: 20.5cm [8in]

Designed to have 2.5-5cm [1-2in] of negative ease in the brim and 2.5-5cm [1-2in] positive ease in the body of the hat.

YARN

Baa Ram Ewe Titus 4ply (50% Wensleydale Longwool, 20% Bluefaced Leicester wool, 30% British alpaca; 320m [350yds] per 100g skein)

Yarn A: Crucible 1 x 100g skein

Yarn B: Endeavour 1 x 100g skein

Yarn C: Goathland 1 x 100g skein

Yarn for pompom (optional), shown in Eccup. (Or you could use the remaining yarn from any of the three colours used for the hat.)

NEEDLES & NOTIONS

2.5mm [UK 13-12/US 1.5] circular needle, 40cm [16in] long or 2.5mm [UK 13-12/US 1.5] set of five DPNs, or size needed to get correct tension in 3 x 2 Rib pattern

2.75mm [UK 12/US 2] circular needle, 40cm [16in] long and 2.75mm [UK 12/US 2] set of five DPNs, or size needed to get correct tension in Colourwork st st pattern

Stitch marker

Tapestry needle

TENSION

36 sts and 48 rounds = 10cm [4in] over 3 x 2 Rib pattern using smaller needles

32 sts and 40 rounds = 10cm [4in] over Colourwork st st using larger needles

ABBREVIATIONS

CDD	Centred double decrease. Slip 2 stitches together knit wise, knit 1, pass 2 slipped stitches over
DPNs	Double-pointed needles
k	Knit
k2tog	Knit next 2 stitches together (1 stitch decreased)
p	Purl
rem	Remain(s)/remaining
rep	Repeat(s)/repeating
ssk	Slip 2 stitches individually as if to knit, then knit those 2 stitches together through the back loops (1 stitch decreased)
st(s)	Stitch(es)
st st	Stocking stitch [US Stockinette stitch]
WS	Wrong side

INSTRUCTIONS

BRIM

With yarn A and smaller needles cast on 180 (200, 220) sts. Join to work in the round, being careful not to twist. Place marker for start of round.

Round 1: *K3, p2; rep from * to end. Last round sets 3 x 2 Rib pattern. Rep last round a further 17 times (18 rounds).

BODY

Change to larger needles. Work from chart A as follows, using a stranded knitting technique, and joining in colours as required:

Round 1: Reading chart A from right to left, [work 10 sts from row 1 of chart] 18 (20, 22) times.

Last round sets Colourwork st st pattern.

Continue to work from chart as set until chart has been completed 3 times (48 rounds).

CROWN

While working crown decreases, change to DPNs when needed.

Round 1: [Work 20 sts from row 1 of chart B] 9 (10, 11) times.

Last round sets chart B pattern. Continue to work from chart B as set until chart row 5 is complete. 144 (160, 176) sts.

Round 6: [Work across row 1 of chart C] 9 (10, 11) times.

Last round sets chart C pattern. Continue to work from chart C as set until chart row 5 is complete. 90 (100, 110) sts.

Round 11: [Work across row 1 of chart D] 9 (10, 11) times.

Last round sets chart D pattern. Continue to work from chart D as set until chart row 5 is complete. 36 (40, 44) sts.

Now use yarn A only.

Round 16: *CDD, k1; rep from * to end. 18 (20, 22) sts.

Round 17: Knit.

Round 18: *K2tog; rep from * to end. 9 (10, 11) sts.

FINISHING

Cut yarn, leaving a 15cm [6in] tail, draw the tail through the rem sts and fasten off to WS. Weave in ends. Soak the hat in tepid water for approx 20 minutes. Then gently squeeze out excess water and leave to dry over a suitable hat form, such as a balloon. Make a pompom and attach firmly to crown.

Charts

KEY







-  Using yarn A (Crucible); knit
-  Using yarn B (Endeavour); knit
-  Using yarn C (Goathland); knit
-  Using yarn indicated; ssk
-  Using yarn indicated; k2tog
-  Using yarn indicated; CDD: Centred double decrease. Slip 2 sts together knitwise, k1, pass 2 slipped sts over

CHART D

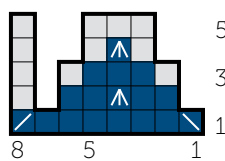


CHART C

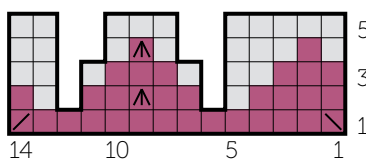


CHART B

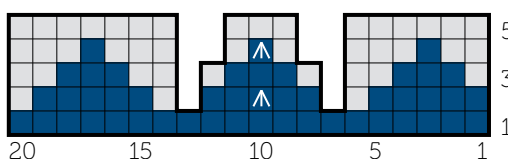
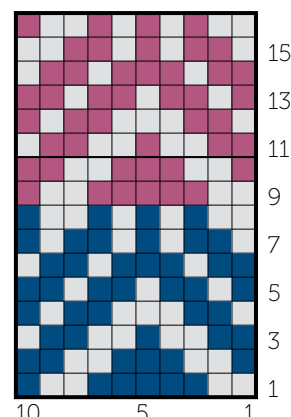


CHART A





Great columns of cables snake up the ribbing on this comfortable warm hat, with an optional pom-pom.

Hartwith





Hartwith

SIZES

Small (Medium, Large)

To fit head circumference: 53.5 (61, 66) cm [21 (24, 26) in]

Brim circumference: 49.5 (56.5, 63.5) cm [19½ (22¼, 25) in]

Hat body circumference: 55.5 (63.5, 71.5) cm [22 (25, 28) in]

Length from brim to crown: 23.5cm [9¼in]

Designed to have 2.5-5cm [1-2in] of negative ease in the brim and 2.5-5cm [1-2in] positive ease in the body of the hat.

Baa Ram Ewe Titus 4ply (50% Wensleydale Longwool, 20% Bluefaced Leicester wool, 30% British alpaca; 320m [350yds] per 100g skein)
Goatland 1 x 100g skein
Yarn for pompom (optional), shown in Bramley Baths.

NEEDLES & NOTIONS

2.5mm [UK 13-12/US 1.5] circular needle, 40cm [16in] long or 2.5mm [UK 13-12/US 1.5] set of five DPNs, or size needed to get correct tension in Brim pattern

2.75mm [UK 12/US 2] circular needle, 40cm [16in] long and 2.75mm [UK 12/US 2] set of five DPNs, or size needed to get correct tension in Body pattern
Cable needle

Stitch marker

Tapestry needle

TENSION

36 sts and 44 rounds = 10cm [4in] over Brim pattern using smaller needles

32 sts and 40 rounds = 10cm [4in] over Body pattern using larger needles

WRITTEN INSTRUCTIONS SEE OVER FOR CHARTED INSTRUCTIONS

BRIM

With smaller needles cast on 175 (200, 225) sts. Join to work in the round, being careful not to twist. Place marker for start of round.

Round 1: *P2, [k1 tbl, p1] 3 times, k1 tbl, [p2, k2] 4 times; rep from * to end.
Last round sets Brim pattern. Rep last round a further 23 times (24 rounds).

BODY

Change to larger needles.

Round 1: *P2, [k1 tbl, p1] 3 times, k1 tbl, p2, k2, p1, 2/1 RC, p2, 2/1 LC, p1, k2; rep from * to end.

Round 2: *P2, [k1 tbl, p1] 3 times, k1 tbl, p2, k2, p1, k3, p2, k3, p1, k2; rep from * to end.

Round 3: *P2, [k1 tbl, p1] 3 times, k1 tbl, p2, k2, 2/1 RC, k1, p2, k1, 2/1 LC, k2; rep from * to end.

Round 4: *P2, [k1 tbl, p1] 3 times, k1 tbl, p2, k6, p2, k6; rep from * to end.

Round 5: *P2, [k1 tbl, p1] 3 times, k1 tbl, p2, k1, 2/1 RC, k2, p2, k2, 2/1 LC, k1; rep from * to end.

Round 6: As round 4.

Round 7: *P2, [k1 tbl, p1] 3 times, k1 tbl, p2, 2/1 RC, k3, p2, k3, 2/1 LC; rep from * to end.

Round 8: As round 4.

Round 9: *P2, [k1 tbl, p1] 3 times, k1 tbl, p2, k3, 2/1 RC, p2, 2/1 LC, k3; rep from * to end.

Round 10: *P2, [k1 tbl, p1] 3 times, k1 tbl, p2, k6, p2, k6; rep from * to end.

Round 11: *P2, [k1 tbl, p1] 3 times, k1 tbl, p2, k2, 2/1 RC, k1, p2, k1, 2/1 LC, k2; rep from * to end.

Round 12: As round 10.

Round 13: *P2, [k1 tbl, p1] 3 times, k1 tbl, p2, k1, 2/1 RC, k2, p2, k2, 2/1 LC, k1; rep from * to end.

Round 14: As round 10.

Round 15: *P2, [k1 tbl, p1] 3 times, k1 tbl, p2, 2/1 RC, k3, p2, k3, 2/1 LC; rep from * to end.

Round 16: As round 10.

Rounds 17-56 are the Body pattern.

Round 17: *P2, k1 tbl, 1/1 RT, p1, 1/1 LT, k1 tbl, p2, 2/1 LC, k3, p2, k3, 2/1 RC; rep from * to end.

Round 18: *P2, k3 tbl, p1, k3 tbl, p2, k6, p2, k6; rep from * to end.

Round 19: *P2, 1/1 RPT, k1 tbl, p1, k1 tbl, 1/1 LPT, p2, k1, 2/1 LC, k2, p2, k2, 2/1 RC, k1; rep from * to end.

Round 20: *P2, [k1 tbl, p1] 3 times, k1 tbl, p2, k6, p2, k6; rep from * to end.

Round 21: *P2, k1 tbl, 1/1 RPT, p1, 1/1 LPT, k1 tbl, p2, k2, 2/1 LC, k1, p2, k1, 2/1 RC, k2; rep from * to end.

Round 22: *P2, k2 tbl, p3, k2 tbl, p2, k6, p2, k6; rep from * to end.

Round 23: *P2, 1/1 RPT, p3, 1/1 LPT, p2, k3, 2/1 LC, p2, 2/1 RC, k3; rep from * to end.

Round 24: *P2, k1 tbl, p5, k1 tbl, p2, k6, p2, k6; rep from * to end.

Round 25: *P2, 1/1 LT, p3, 1/1 RT, p2, 2/1 LC, k3, p2, k3, 2/1 RC; rep from * to end.

Round 26: *P2, k2 tbl, p3, k2 tbl, p2, k6, p2, k6; rep from * to end.

Round 27: *P2, k1 tbl, 1/1 LPT, p1, 1/1 RPT, k1 tbl, p2, k1, 2/1 LC, k2, p2, k2, 2/1 RC, k1; rep from * to end.

Round 28: *P2, [k1 tbl, p1] 3 times, k1 tbl, p2, k6, p2, k6; rep from * to end.

Round 29: *P2, 1/1 LT, k1 tbl, p1, k1 tbl, 1/1 RT, p2, k2, 2/1 LC, k1, p2, k1, 2/1 RC, k2; rep from * to end.

Round 30: *P2, k3 tbl, p1, k3 tbl, p2, k6, p2, k6; rep from * to end.

Round 31: *P2, k1 tbl, 1/1 LPT, p1, 1/1 RPT, k1 tbl, p2, k3, 2/1 LC, p2, 2/1 RC, k3; rep from * to end.

Round 32: *P2, [k1 tbl, p1] 3 times, k1 tbl, p2, k6, p2, k6; rep from * to end.

Round 33: *P2, k1 tbl, 1/1 RT, p1, 1/1 LT, k1 tbl, p2, k3, 2/1 RC, p2, 2/1 LC, k3; rep from * to end.

Round 34: *P2, k3 tbl, p1, k3 tbl, p2, k6, p2, k6; rep from * to end.

Round 35: *P2, 1/1 RPT, k1 tbl, p1, k1 tbl, 1/1 LPT, p2, k2, 2/1 RC, k1, p2, k1, 2/1 LC, k2; rep from * to end.

Round 36: *P2, [k1 tbl, p1] 3 times, k1 tbl, p2, k6, p2, k6; rep from * to end.

Round 37: *P2, k1 tbl, 1/1 RT, p1, 1/1 LT, k1 tbl, p2, k1, 2/1 RC, k2, p2, k2, 2/1 LC, k1; rep from * to end.

ABBREVIATIONS

CDD	Centred double decrease. Slip 2 stitches together knitwise, k1, pass 2 slipped stitches over
DPNs	Double-pointed needles
k	Knit
k2tog	Knit next 2 stitches together (1 stitch decreased)
p	Purl
rem	Remain(s)/remaining
rep	Repeat(s)/repeating
ssk	Slip 2 stitches individually as if to knit, then knit those 2 stitches together through the back loops (1 stitch decreased)
st(s)	Stitch(es)
tbl	Through the back loops
WS	Wrong side
1/1 LT	Slip next st to cable needle and place at front of work, k1 tbl; then k1 tbl from cable needle
1/1 RT	Slip next st to cable needle and place at back of work, k1 tbl; then k1 tbl from cable needle
1/1 LPT	Slip next st to cable needle and place at front of work, p1; then k1 tbl from cable needle
1/1 RPT	Slip next st to cable needle and place at back of work, k1 tbl; then p1 from cable needle
2/1 LC	Slip next 2 sts to cable needle and place at front of work, k1; then k2 from cable needle
2/1 RC	Slip next st to cable needle and place at back of work, k2; then k1 from cable needle

Charts



KEY

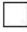

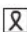

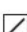

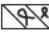
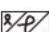
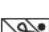
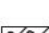


-  knit
-  purl
-  k1 tbl
-  ssk
-  k2tog
-  CDD: Centred double decrease.
Slip 2 sts together knitwise, k1, pass 2 slipped sts over
-  1/1 LT: Slip next st to cable needle and place at front of work, k1 tbl; then k1 tbl from cable needle
-  1/1 RT: Slip next st to cable needle and place at back of work, k1 tbl; then k1 tbl from cable needle
-  1/1 LPT: Slip next st to cable needle and place at front of work, p1; then k1 tbl from cable needle
-  1/1 RPT: Slip next st to cable needle and place at back of work, k1 tbl; then p1 from cable needle
-  2/1 LC: Slip next 2 sts to cable needle and place at front of work, k1; then k2 from cable needle
-  2/1 RC: Slip next st to cable needle and place at back of work, k2; then k1 from cable needle

CHART D

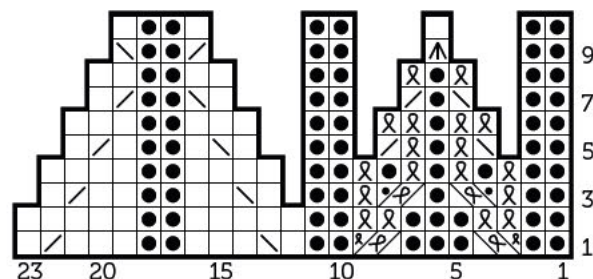


CHART B

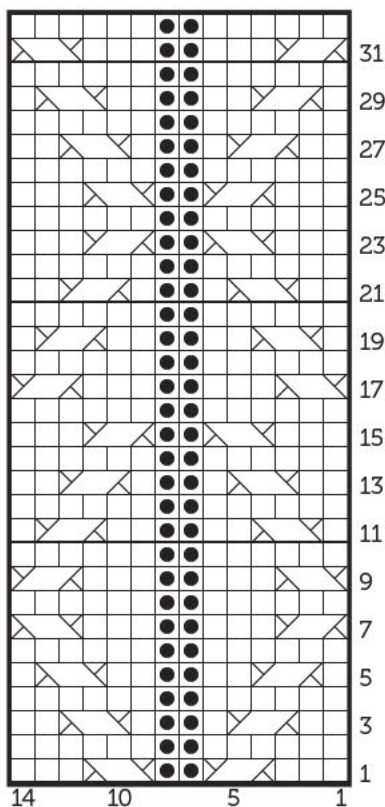


CHART C

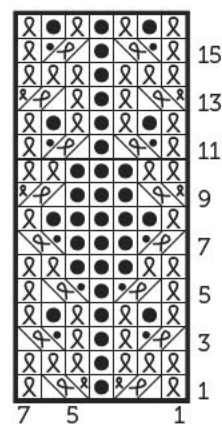
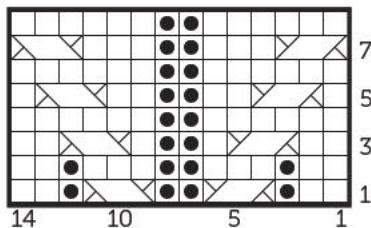


CHART A



Round 38: *P2, k2 tbl, p3, k2 tbl, p2, k6, p2, k6; rep from * to end.

Round 39: *P2, 1/1 RPT, p3, 1/1 LPT, p2, 2/1 RC, k3, p2, k3, 2/1 LC; rep from * to end.

Round 40: *P2, k1 tbl, p5, k1 tbl, p2, k6, p2, k6; rep from * to end.

Round 41: *P2, 1/1 LT, p3, 1/1 RT, p2, k3, 2/1 RC, p2, 2/1 LC, k3; rep from * to end.

Round 42: *P2, k2 tbl, p3, k2 tbl, p2, k6, p2, k6; rep from * to end.

Round 43: *P2, k1 tbl, 1/1 LPT, p1, 1/1 RPT, k1 tbl, p2, k2, 2/1 RC, k1, p2, k1, 2/1 LC, k2; rep from * to end.

Round 44: *P2, [k1 tbl, p1] 3 times, k1 tbl, p2, k6, p2, k6; rep from * to end.

Round 45: *P2, 1/1 LT, k1 tbl, p1, k1 tbl, 1/1 RT, p2, k1, 2/1 RC, k2, p2, k2, 2/1 LC, k1; rep from * to end.

Round 46: *P2, k3 tbl, p1, k3 tbl, p2, k6, p2, k6; rep from * to end.

Round 47: *P2, k1 tbl, 1/1 LPT, p1, 1/1 RPT, k1 tbl, p2, 2/1 RC, k3, p2, k3, 2/1 LC; rep from * to end.

Round 48: *P2, [k1 tbl, p1] 3 times, k1 tbl, p2, k6, p2, k6; rep from * to end.

Rounds 49-56: As rounds 17-24.

CROWN

While working crown decreases, change to DPNs when needed.

Round 1: *P2, 1/1 LT, p3, 1/1 RT, p2, k1, ssk, k3, p2, k3, k2tog, k1; rep from * to end. *161 (184, 207) sts.*

Round 2: *P2, k2 tbl, p3, k2 tbl, [p2, k5] twice; rep from * to end.

Round 3: *P2, k1 tbl, 1/1 LPT, p1, 1/1 RPT, k1 tbl, p2, k1, ssk, k2, p2, k2, k2tog, k1; rep from * to end. *147 (168, 189) sts.*

Round 4: *P2, [k1 tbl, p1] 3 times, k1 tbl, [p2, k4] twice; rep from * to end.

Round 5: *P2, ssk, k1 tbl, p1, k1 tbl, k2tog, p2, k1, ssk, k1, p2, k1, k2tog, k1; rep from * to end. *119 (136, 153) sts.*

Round 6: *P2, k2 tbl, p1, k2 tbl, [p2, k3] twice; rep from * to end.

Round 7: *P2, ssk, p1, k2tog, p2, k1, ssk, p2, k2tog, k1; rep from * to end. *91 (104, 117) sts.*

Round 8: *P2, k1 tbl, p1, k1 tbl, [p2, k2] twice; rep from * to end.

Round 9: *P2, CDD, p2, k2tog, p2, ssk; rep from * to end. *63 (72, 81) sts.*

Round 10: *P2, k1; rep from * to end.

Round 11: *P1, k2tog; rep from * to end. *42 (48, 54) sts.*

Round 12: *P1, k1; rep from * to end.

Round 13: *K2tog; rep from * to end. *21 (24, 27) sts.*

Round 14: Knit.

Round 15: [K2tog] 10 (12, 13) times, k1 (0, 1). *11 (12, 14) sts.*

FINISHING

Cut yarn, leaving a 15cm [6in] tail, draw the tail through the rem sts and fasten off to WS. Weave in ends. Soak the hat in tepid water for approx. 20 minutes. Then gently squeeze out excess water and leave to dry over a suitable hat form, such as a balloon.

Optional: Make pompom and attach firmly to crown.

CHARTED INSTRUCTIONS

SEE ABOVE FOR WRITTEN INSTRUCTIONS

BRIM

With smaller needles cast on 175 (200, 225) sts. Join to work in the round, being careful not to twist. Place marker for start of round.

Round 1: *P2, [k1 tbl, p1] 3 times, k1 tbl, [p2, k2] 4 times; rep from * to end.

Last round sets Brim pattern. Rep last round a further 23 times (24 rounds).

BODY

Change to larger needles. Work from chart as follows:

Round 1: *P2, [k1 tbl, p1] 3 times, k1 tbl, p2, reading chart from right to left, work 14 sts from row 1 of chart A; rep from * to end. Last round sets chart A and rib pattern. Continue to work from chart as set until chart A row 8 is complete (8 rounds).

Round 9: *P2, [k1 tbl, p1] 3 times, k1 tbl, p2, reading chart from right to left, work 14 sts from row 1 of chart B; rep from * to end.

Last round sets chart B and rib pattern. Continue to work from chart as set until chart B row 8 is complete (8 rounds).

Round 17: *P2, reading chart from right to left, work 7 sts from row 1 of chart C, p2, reading chart from right to left, work 14 sts from row 9 of chart B; rep from * to end. Last round sets Body pattern. Continue to work from charts as set until chart B row 32 is complete and rows 1-16 have been worked once more (40 rounds).

CROWN

While working crown decreases, change to DPNs when needed.

Round 1: *Work across row 1 of chart D; rep from * to end.

Last round sets Crown Shaping pattern. Continue to work from chart D as set until chart row 10 is complete. *63 (72, 81) sts.*

Round 11: *P1, k2tog; rep from * to end. *42 (48, 54) sts.*

Round 12: *P1, k1; rep from * to end.

Round 13: *K2tog; rep from * to end. *21 (24, 27) sts.*

Round 14: Knit.

Round 15: [K2tog] 10 (12, 13) times, k1 (0, 1). *11 (12, 14) sts.*

FINISHING

Cut yarn, leaving a 15cm [6in] tail, draw the tail through the rem sts and fasten off to WS. Weave in ends. Soak the hat in tepid water for approx. 20 minutes. Then gently squeeze out excess water and leave to dry over a suitable hat form, such as a balloon.

Optional: Make pompom and attach firmly to crown.





Padside



Simple garter ridges give these cosy mittens just a dash of texture. Quick to knit, they'll keep your hands toasty and snug.



Padside

SIZES

Small (Large)

To fit hand circumference: 19 (21.5) cm [7½ (8½) in]

Mitten circumference above thumb: 20.5 (23) cm [8 (9) in]

Length from cuff to fingertip: 25 (25.5) cm [10 (10¼) in]

YARN

Baa Ram Ewe Titus 4ply (50% Wensleydale Longwool, 20% Bluefaced Leicester wool, 30% British alpaca; 320m [350yds] per 100g skein)
Crucible 1 x 100g skein

NEEDLES & NOTIONS

2.5mm [UK 13-12/US 1.5] circular needle, 80cm [32in] long or 2.5mm [UK 13-12/US 1.5] set of five DPNs, or size needed to get correct tension

Stitch markers

Tapestry needle

TENSION

32 sts and 44 rounds = 10cm [4in] over Rib and

Textured stitch patterns using 2.5mm needles

ABBREVIATIONS

DPNs	Double-pointed needles
st(s)	Stitch(es)
rem	Remain(s)/remaining
rep	Repeat(s)/repeating
k	Knit
m1l	Make 1 left. Pick up the strand between stitches from front to back and knit through the back of this loop (1 stitch increased)
m1r	Make 1 right. Pick up the strand between stitches from back to front and knit this loop (1 stitch increased)
p	Purl
pm	Place marker
k2tog	Knit next 2 stitches together (1 stitch decreased)
slm	Slip marker

ssk Slip 2 stitches individually as if to knit, then knit those 2 stitches together through the back loops (1 stitch decreased)

tbl Through the back loop

yo Yarnover

INSTRUCTIONS

CUFF

Cast on 64 (72) sts. Join to work in the round, being careful not to twist. Place marker for start of round.

Rounds 1-12: *P2, k2; rep from * to end.
Rounds 13-24: *K2, p2; rep from * to end.
Rounds 25-36: *P2, k2; rep from * to end.

BODY

Round 1: P2, k2, p2, k to end of round.
Round 2: P2, k2, p to end of round.
Rounds 3 & 4: Rep rounds 1 & 2.
Rounds 5-8: As round 1.

THUMB GUSSET

Round 1: P2, k2, p2, k to end of round.
Round 2: P2, k1, pm, yo, pm, k1, p to end of round. 65 (73) sts.
Round 3: P2, k1, slm, k1 tbl, slm, k1, p2, k to end of round.
Round 4: P2, k1, slm, m1r, k to next marker, m1l, slm, k1, p to end of round. 2 sts inc.
Round 5: P2, k1, slm, k to next marker, slm, k1, p2, k to end of round.
Round 6: P2, k1, slm, m1r, k to next marker, m1l, slm, k1, p2, k to end of round. 2 sts inc.
Round 7: Work as round 5.
Round 8: Work as round 6. 2 sts inc.
Round 9: Work as round 5.
Round 10: Work as round 4. 2 sts inc.
Round 11: Work as round 5.
Rounds 12-19: Work as rounds 4-11. 8 sts inc; 81 (89) sts.
Rounds 20-25: Work as rounds 4-9. 6 sts inc; 87 (95) sts.
 There are 23 sts between markers.

Round 26: P2, k1, remove marker, put the next 23 sts on a piece of waste yarn,

remove marker, K1, p to end of round. 64 (72) sts and 23 thumb sts on waste yarn.

MITTEN BODY

Round 1: P2, k2, p2, k to end of round.
Round 2: P2, k2, p to end of round.
Rounds 3-7: P2, k2, p2, k to end of round.
Round 8: P2, k2, p to end of round.

Work these 8 rounds twice and rounds 1 and 2 once more (18 rounds).

Next round: P2, k2, p2, k to end of round. Rep a further 13 times (14 rounds).

Left mitten only (partial round): Remove marker, k2, p2, k2, pm. This is the new start of the round.

DECREASE SECTION

Round 1: K32 (36), pm, k32 (36).
Round 2: *K2, ssk, knit to 4 sts before marker, k2tog, k2, slm; rep from * once more. 4 sts dec.
Round 3: Knit.
 Rep last 2 rounds a further 9 (10) times. 40 (44) sts dec; 24 (28) sts rem.

Cut yarn, leaving a 45cm [18in] tail. Slip the two sets of sts between markers to separate needles and graft them together using Kitchener stitch.

THUMB

Return the 23 sts on waste yarn to your needles, k23, pick up and knit 2 sts where the thumb meets the palm of the mitten. Join to work in the round. Place marker for start of round. 25 sts.

Knit all sts until the thumb measures 6.5cm [2½in], or the desired length.

THUMB DECREASES

Round 1: *K2tog, rep from * until 1 st rem, k1. 13 sts.
Round 2: *K2tog, rep from * until 1 st rem, k1. 7 sts.

FINISHING

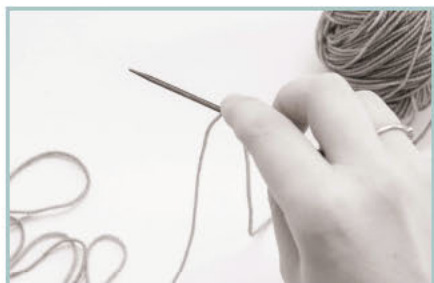
Cut yarn, leaving a 15cm [6in] tail, draw the tail through the rem sts and fasten off. Weave in ends. Soak the mittens in tepid water for approx. 20 minutes. Then gently squeeze out excess water and leave to dry flat, ensuring that the two thumbs are lying correctly.



How to...

LONG-TAIL CAST-ON

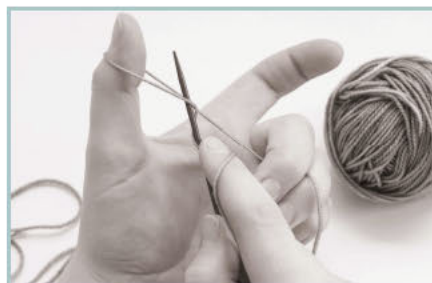
This cast-on method gives a firm but flexible edge that is perfect for hats and mittens.



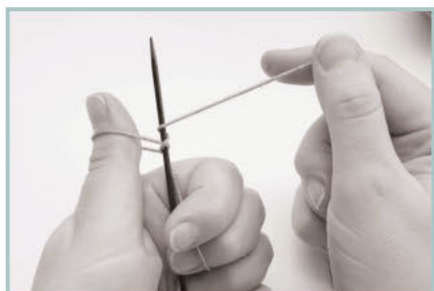
1. Measure approximately 1m [1yd] of yarn, place the yarn over the needle with the ball at the rear and the tail of the yarn towards you. Use your forefinger to hold the yarn on the needle.



2. Using the tail end of the yarn, make a loop of yarn around your thumb as shown.



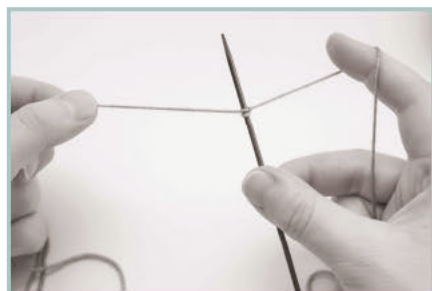
3. Put the needle tip into the loop.



4. Use your right hand to wrap the yarn from the ball side around the needle tip.



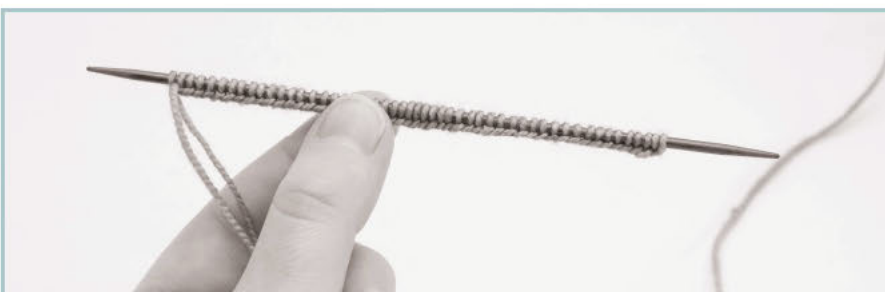
5. Use your thumb to lift the loop off the end of the needle, thus making the first (formed by holding the yarn over the needle) and second stitches.



6. Gently tighten both ends of the yarn (tail and ball sides).

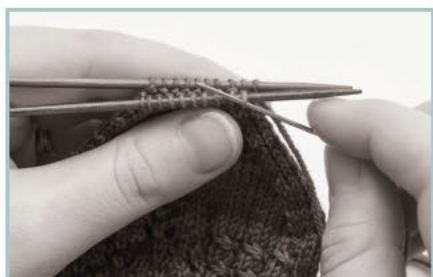
CONTINUE AS SET

Repeat steps 2 to 6 until you have cast on the desired number of stitches.

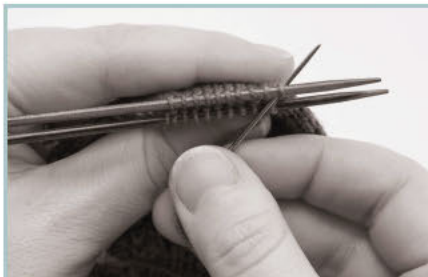


KITCHENER STITCH (GRAFTING)

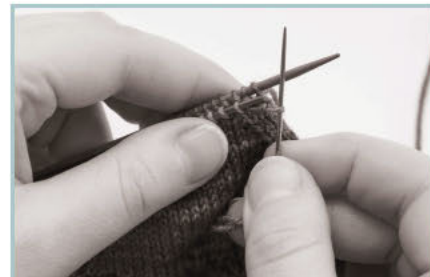
The mittens in this book use Kitchener stitch to close the top stitches. This tutorial shows you how, and gives tips on making the graft stitches neat and tidy.



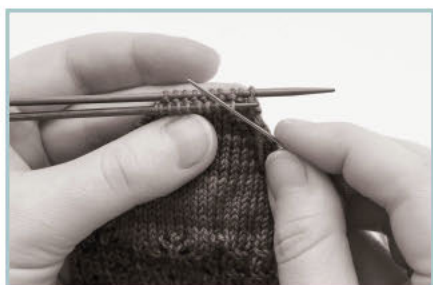
1. Holding needles parallel to each other, thread a tapestry needle with the yarn tail. Insert the tapestry needle into the first stitch on the DPN closest to you **as if to purl** and pull it through, leaving the stitch **on** the needle.



2. Insert the needle into the first stitch on the DPN furthest from you **as if to knit** and pull it through, leaving the stitch **on** the needle.



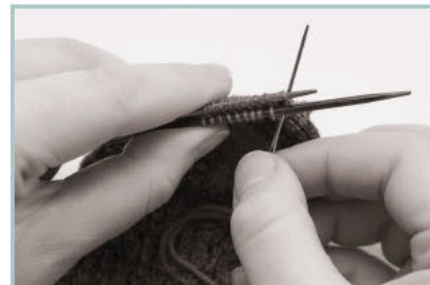
3. Insert the needle into the first stitch on the DPN closest to you **as if to knit** and pull it through, slipping the stitch **off** the needle.



4. Insert the needle into the first stitch on the DPN closest to you **as if to purl** and pull it through, leaving the stitch **on** the needle.



5. Insert the needle into the first stitch on the DPN furthest from you **as if to purl** and pull it through, slipping the stitch **off** the needle.

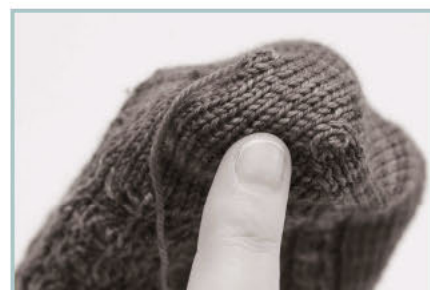


6. Insert the needle into the first stitch on the DPN furthest from you **as if to knit** and pull it through, leaving the stitch **on** the needle.

FINISHING

Repeat steps 3-6 until all the live stitches have been grafted together.

The grafted stitches will be looser than the knitted stitches around them. Use the tapestry needle to neaten them: starting at the first stitch to be grafted, pull each stitch until it matches the knitted stitches on the toe. Take the yarn to the inside of the work and weave in the end to finish.



Words of wisdom

USING CHARTS

Charts are a graphical representation of your knitting, with each square representing a stitch (or small group of stitches) and every row of squares representing a round of knitting. When knitting in the round, chart rows are read from right to left.

Full written instructions are provided for all of the non-colourwork charted designs in this book.

This article from Knitty.com is a helpful tutorial on knitting from charts: www.tinyurl.com/KnittingCharts

REPEATING INSTRUCTIONS

Where a pattern tells you to repeat from * a certain number more times, it means that you should work the instruction once, and then work it a further number of times as instructed. For example, *p1, k1 tbl; repeat from * 2 more times. This means that you repeat "p1, k1 tbl" three times in total (p1, k1 tbl, p1, k1 tbl, p1, k1 tbl).

SQUARE BRACKETS

Some patterns have instructions given within square brackets. After the bracket it will tell you how many times to work that instruction in total. For example, [k3, p1 tbl] 3 times. This would be worked as k3, p1 tbl, k3, p1 tbl, k3, p1 tbl.

TECHNIQUES REFERENCE SOURCES BOOKS

A good general knitting techniques book will be invaluable for helping you with some of the methods used in this book. We recommend **The Knitting Answer Book** by Margaret Radcliffe. ISBN 978-0715325759

ONLINE TUTORIALS

The internet is a great source of helpful tutorials and techniques videos. Here are some handy resources:

Knitting in the round is well-described in videos at KnittingHelp.com, which cover how to use double-pointed needles, two circular needles and the Magic Loop method www.tinyurl.com/KnittingInTheRound

The long-tail cast-on method shown on page 58 is shown in a video here:

<http://verypink.com/2010/03/13/video-long-tail-cast-on/>

An alternative long-tail cast-on style is shown in a video at KnittingHelp.com: www.tinyurl.com/CastOnMethods

Kitchener stitch (grafting) (shown on page 59) is also covered in this article from Knitty.com: www.tinyurl.com/KitchenerStitch

Stranded colourwork (sometimes called Fair Isle) is used for many of these designs. There is a useful video from KnitPicks at: www.tinyurl.com/StrandedColourwork

POMPOMS

The pompoms I made for the hats in this book weigh between 25-30g each. I used an 85mm diameter Clover Pompom maker (the blue one) available from many yarn shops and online retailers. I use a strong, difficult to break yarn to tie the pompom off, as this means it's less likely to snap as you pull it tight.

CARE INSTRUCTIONS

Take care to follow the washing instructions on your ball band.

PATTERN QUERIES

If you think there may be an error with any of the pattern instructions, please email coopknit@gmail.com

KEEP IN TOUCH

My blog and online shop are at www.coopknits.co.uk

The Coop Knits group on Ravelry is friendly and funny. Please do join the group and share pictures of your finished Coop Knits projects, or tell me about what you're working on now. I love to see what you have been making. www.ravelry.com/groups/coop-knits

On Twitter and Instagram I'm [@CoopKnits](https://twitter.com/CoopKnits) – don't forget to follow me to keep up-to-date with new pattern releases.

And finally...

Thank-you

...to Verity, Jo, Sigi, Nez, Jesse, Jen, Jim and Nic – thank you all for your help with this book.



A good yarn

BAA RAM EWE TITUS

Baa Ram Ewe Titus 4ply yarn is used for all of the accessories in Coop Knits Toasty VOLUME 2.

Titus is spun in Yorkshire from a blend of 50% Wensleydale, 20% Bluefaced Leicester and 30% British alpaca and uses 100% British fibre.

Each 100g skein measures 320m [350yds] and knits up as a heavy 4ply/light sport weight.

It is available in a selection of beautiful shades from www.baaramewe.co.uk.

www.coopknits.co.uk



COOPKNITS

TOASTY

VOLUME 2

RACHEL COOPEY

Nine unique accessory patterns for you to knit, designed by Rachel Coopey, in Baa Ram Ewe Titus yarn.

Coop Knits Toasty VOLUME 2, is a collection of original accessory designs. Each pattern has clear charts and full written instructions. Step-by-step photo tutorials are provided for techniques such as Long-tail Cast On and Kitchener Stitch.

A perfect selection of accessories that will fly off the needles to keep you toasty and warm.

RRP: £12.00

ISBN 978-0-9576216-3-3



9 780957 621633 >