

Fabulous festive JUMPER

With a decorative waistband and cuffs, this knit makes a great gift or is just what you need for your own winter wardrobe



Size		8-10	12-14	16-18	20-22	24-26
To fit chest	cm	81-86	91-97	102-107	112-117	122-127
Actual chest	cm	103.5	114.5	125.5	131	142
Full length	cm	55	57	59	61	63
Sleeve length	cm	45 for all sizes				

Turn the page for
full instructions ➔

Fabulous festive JUMPER

You will need

- * 3(4:4:4:5) x 100g balls West Yorkshire Spinners ColourLab DK (100% Wool) in Perfectly Plum 0362 (Yarn A); 1(1:1:2:2) x 100g balls in Deep Teal 0716 (Yarn B); 1 x 100g ball in Coral Crush 0361 (Yarn C); 1 x 100g ball in Citrus Yellow 0229 (Yarn D).
- * 3.25mm and 4mm circular needles, 80-100cm long, for Body. 3.25mm and 4mm DPNs or 40cm circular needles for Sleeves.
- * Stitch marker.
- * 2 stitch holders.

Tension

22 sts and 28 rows/rounds to 10cm stocking stitch using 4mm needles.

Abbreviations

Beg beginning; **cm** centimetre; **cont** continue; **dec** decrease; **DPNS** double pointed needles; **g** gram; **inc** increase; **K/k** knit; **k2tog** knit next 2 stitches together; **m1** make 1 (by picking up loop between last and next stitch and work into back of this loop); **P/p** purl; **PM/pm** place marker; **p2tog** purl next 2 stitches together; **rem** remaining; **rep** repeat; **RS** right side; **rnd** round; **ssk** slip 2 stitches knitwise, knit these 2 stitches together through back loops; **st** stitch; **st st** stocking stitch; **tog** together; **WS** wrong side; * repeat the instructions following the single asterisk as directed; [] work instructions within brackets as many times as directed or for a specific size.

Body

Using 3.25mm circular needle 80-100cm long and B, cast on 272(302:330:344:374) sts. Join to work in a round, being careful not to twist sts. PM to mark beg of rnd. **Rib rnd** (RS) *K1, p1; rep from * to end of round. Rep this rnd until body measures 5cm. **Dec rnd** K6(3:5:6:3), k2tog, [k4, k2tog] 43(49:53:55:61) times, k6(3:5:6:3). 228(252:276:288:312) sts. Change to 4mm circular needle, 80-100cm long, and work in st st (every rnd knit). Work rounds 1-75 of chart, repeating the

12 st rep 19(21:23:24:26) times around rnd.

Work in A only from now on.

Next 5 rounds knit to end of round.

Separate for armholes.

Next part round Cast off 3 sts, k108(120:132:138:150) not including st left from cast off, cast off 3 sts, pm, cast off 3 sts, pm, k108(120:132:138:150) not including st left from cast off, cast off 3 sts, pm.

Back

Working on first 108(120:132:138:150) sts, slip rem sts on to a holder for Front. Work back and forth in rows from now on. Rejoin A, cont in st st (RS knit, WS purl), until work measures 19(21:23:25:27) cm from beg of armhole shaping, ending after a WS row.

Shape shoulders

Cast off 10(11:13:14:15) sts at the beg of next 2 rows. Cast off 10(12:13:14:15) sts at the beg of next 2 rows. Cast off 10(12:14:14:16) sts at the beg of next 2 rows. 48(50:52:54:58) sts. Slip rem sts on to a holder for back neck.

Front

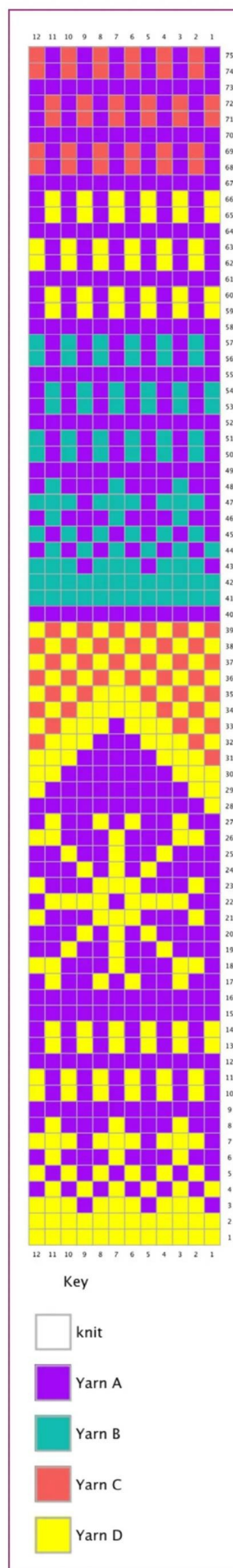
With RS facing, using 4mm needle, rejoin yarn to rem 108(120:132:138:150) sts left on holder for front, and k to end.

Work back and forth in rows from now on.

Cont in st st (RS knit, WS purl), until work measures 9(11:13:15:17)cm from beg of armhole shaping, ending after a WS row.

Shape front neck

Next row (RS) K42(47:52:54:58), turn, leaving the rem 66(73:80:84:92) sts on a holder.



Shape left front neck

Next row (WS) P2tog, p to end.

Next row (RS) K to last 2 sts, k2tog.

Rep last 2 rows once more.

Next row (WS) P2tog, p to end.

37(42:47:49:53) sts.

Next row (RS) K to last 2 sts, k2tog.

Next row (WS) P to end.

Rep last 2 rows 6 times more. 30(35:40:42:46) sts. Work 8 rows straight in st st.

Shape shoulder

Next row (RS) Cast off 10(11:13:14:15) sts, k to end.

Next row (WS) P to end.

Next row (RS) Cast off 10(12:13:14:15) sts, k to end. 10(12:14:14:16) sts.

Next row (WS) P to end. Cast off.

Shape right front neck

With RS facing, working on rem 66(73:80:84:92) sts, slip centre 24(26:28:30:34) sts on to a holder, k across rem 42(47:52:54:58) sts.

Next row (WS) P to last 2 sts, p2togtbl.

Next row (RS) Ssk, k to end.

Rep last 2 rows once more.

Next row (WS) P to last 2 sts, p2tog tbl. 37(42:47:49:53) sts.

Next row (RS) Ssk, k to end.

Next row (WS) P to end. Rep last 2 rows 6 times more. 30(35:40:42:46) sts. work 9 rows straight in st st.

Shape shoulder

Next row (WS) Cast off 10(11:13:14:15) sts, p to end.

Next row (RS) K to end.

Next row (WS) Cast off 10(12:13:14:15) sts, p to end. 10(12:14:14:16) sts.

Next row (RS) K to end. Cast off.



This jumper is knitted in the round, eliminating seams on the body and sleeves, making it super quick to sew up!

Sleeves (both alike)

Using 3.25mm DPNs or small circular and B, cast on 48(48:60:60:60) sts. Join to work in a round, being careful not to twist sts. PM to mark beg of rnd. Work in rib as set on back, until sleeve measures 4cm from cast on edge. Change to 4mm DPNs or small circular. Work rounds 41-75 of chart, repeating the 12 st rep 4(4:5:5:5) times around rnd. Work in A only and st st (knit every round) from now on.

Inc round K1, m1, k to last st, m1, k1. 50(50:62:62:62) sts.

Work 5(3:5:3:3) rounds straight in st st. Rep last 6(4:6:4:4) rounds a further 8(16:2:13:9) times. 66(82:66:88:80) sts.

Inc round K1, m1, k to last st, m1, k1. 68(84:68:90:82) sts.

Work 3(1:3:1:1) round(s) straight in st st. Rep last 4(2:4:2:2) rounds a further 3(0:12:6:14) times. 74(84:92:102:110) sts. Work 10 rounds straight in st st.

Shape sleeve top

Work back and forth in rows.

Cast off 10(11:13:14:15) sts at the beg of next 2 rows.

Cast off 10(12:13:14:16) sts at the beg of next 2 rows.

Cast off 11(12:13:15:16) sts at the beg of next 2 rows. 12(14:14:16:16) sts.

Cast off rem sts.

Neckband

Join both shoulder seams.

With RS facing, using 3.25mm DPNs or small circular and B, pick up and knit 28 sts evenly down left side of neck, knit across 24(26:28:30:34) sts left on holder, pick up and knit 28 sts evenly up right side of neck and knit across 48(50:52:54:58) sts left on holder. 128(132:136:140:148) sts.

Join to work in the round, pm to mark beg of round.

Work in rib as set on Back, until collar measures 3cm from pick-up edge.

Cast off in rib.

To make up

Insert sleeves in position by folding each sleeve in half and placing the fold to the shoulder seam; sew in position between armhole markers. Weave in ends. Pin your garment out to the size stated in the pattern, cover with a damp cloth and leave to dry.