

COLD HEARTS HAT



By Caitlin Hunter

BOYLAND
KNITWORKS

COLD HEARTS HAT

Knit in the round, this jaunty little hat features corrugated ribbing, sweet heart motifs and fun, slightly pointy shaping for when you're feeling particularly jaunty. It can also be pulled down around the ears for a standard beanie fit. The pattern is written for 3 sizes, child, and adult short and tall versions. There are also 2 versions of the charts with reversed colors for easier knitting.



MATERIALS

Yarn:

Blue/cream sample
The Farmer's Daughter Fibers Pishkun
100% Non-Superwash MT & WY Rambouillet
255 yards [142 m] /100g
Heavy DK/Light Worsted Weight

MC: PBR (blue)
CC: Elk Antler (beige)

Red/light grey sample

Ritual Dyes Elder
100% Rambouillet wool
190 yards [173 meters] 100 grams
worsted weight

MC: Bone (light grey)
CC: Jewelweed (coral red)

Needles:

Main: US 7 [4.5 mm] circular needle 16" [40 cm] length for the hat body.

Ribbing: US 6 [4.0 mm] circular needle, 16" [40 cm] length

Double pointed needles of the same sizes suitable for small circumference knitting for the crown decreases

Notions: Stitch Marker, darning needle, scissors, balloon or bowl for blocking

Gauge:

20 sts and 28 rounds = 4 inches [10 cm] in colorwork and stockinette on main gauge needles.

Note- You should always knit your swatch the same way that the pattern is knit—in this case, in the round. Block your swatch as you will your finished garment and allow it to dry fully before measuring.

Sizes: Child (Adult short, adult tall)

Circumference: 16 (20, 20)" [40.5 (51, 51) cm]

Height: 6.5, (8.25, 10)" [16.5 (21, 25.5) cm]

Yardage: Please note that yardage is estimated, and can vary between knitters.

MC : 70 (80, 100) yards [64 (73.5, 91.5) m]

CC : 65 (75, 95) yards [59.5 (68.5, 87) m]

COLD HEARTS HAT

DIRECTIONS

With ribbing needles MC, CO 80 (100, 100) sts using your preferred cast-on method. Sample uses Long Tail Cast-On. Join in the round and PM to indicate BOR, taking care not to twist sts.

Chart

Note- chart is shown in 2 versions, with MC and CC switched to make the chart easier to follow depending on if your project is using a lighter MC or a darker MC.

Begin working the chart for your size as shown on page 3 or 4. After completing ribbing (round 6 (9, 9), switch to main needles.

Work through all rounds of chart. Change to preferred needles for small circumference knitting when necessary.

Break both MC and CC, leaving about 12" [30.5 cm] tail of each yarn.

Finishing

Thread tapestry needle with both yarn tails, and thread through remaining sts twice, pulling tight to close crown of hat.

Weave in ends. Steam- or wet-block hat to finished measurements.

I like to soak my hats in cool water and wool wash, gently squeeze dry, and then allow to dry on a balloon that's been inflated to approximately the circumference of the wearer's head

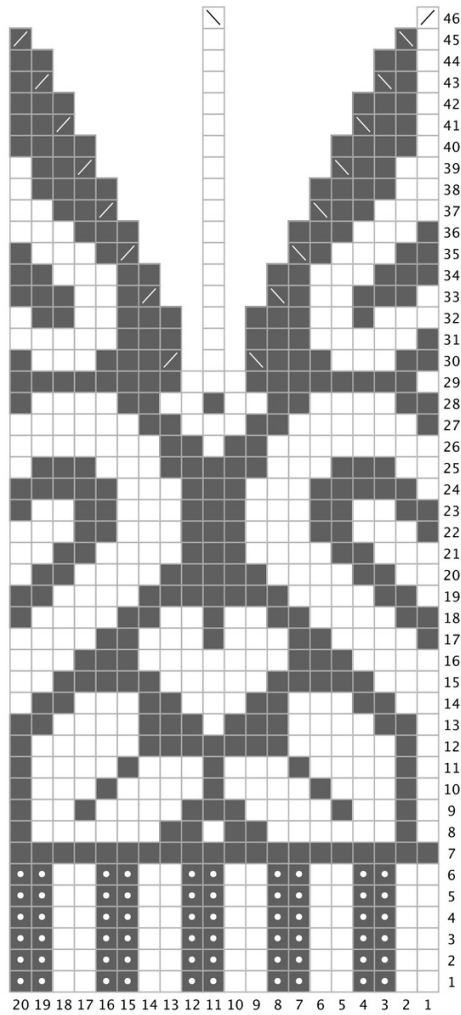
Attach braid or pompom to top your hat if you like! I made a braid using 8 strands of yarn (doubled) for the pictured braid.



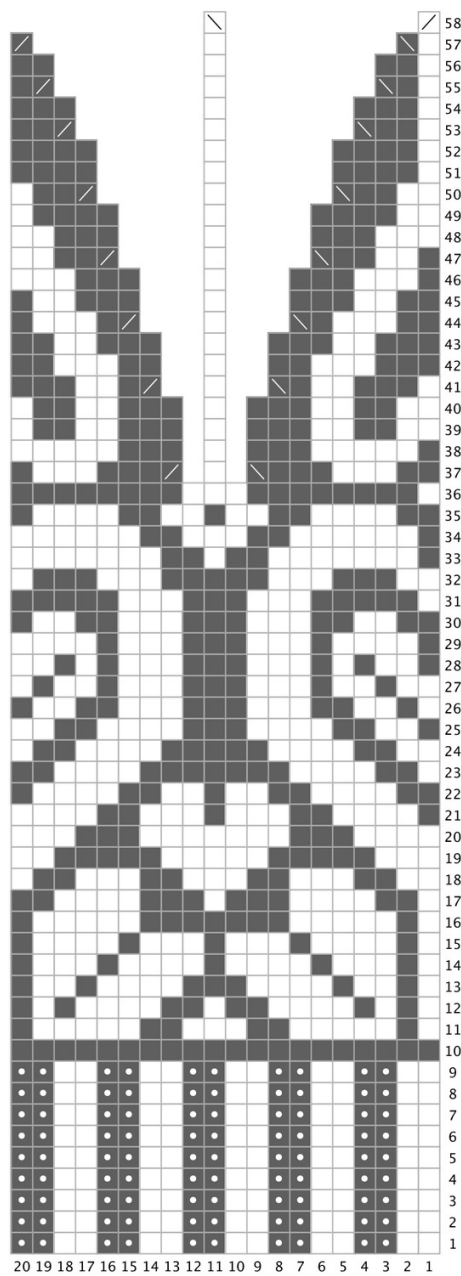
COLD HEARTS HAT

DARKER MC

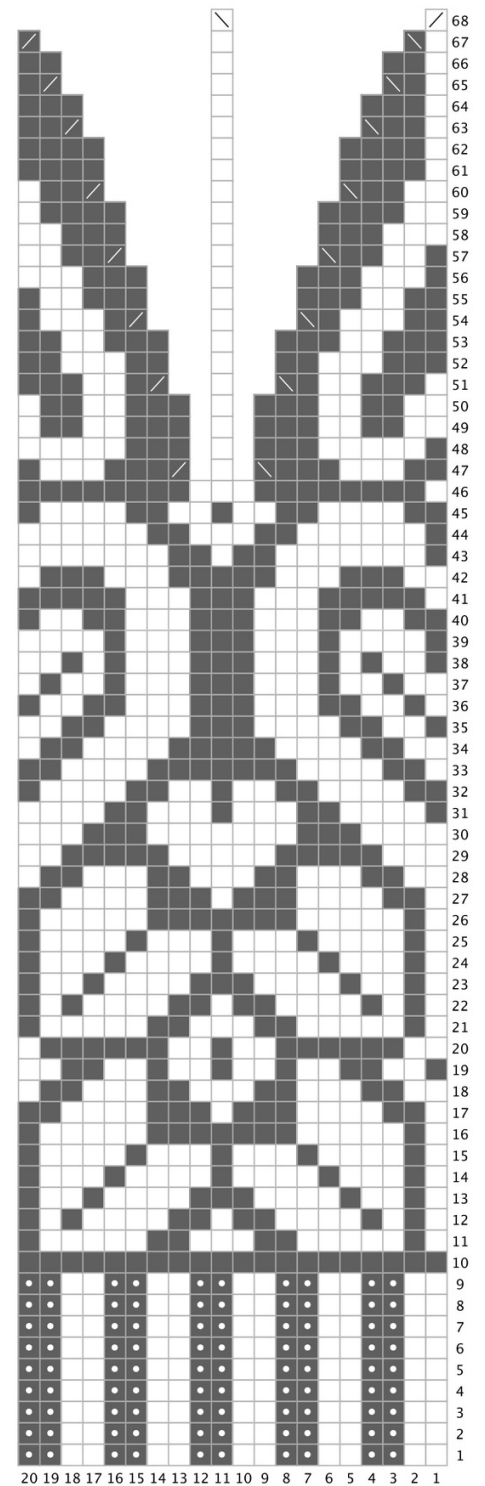
KIDS' CHART



SHORT CHART



TALL CHART



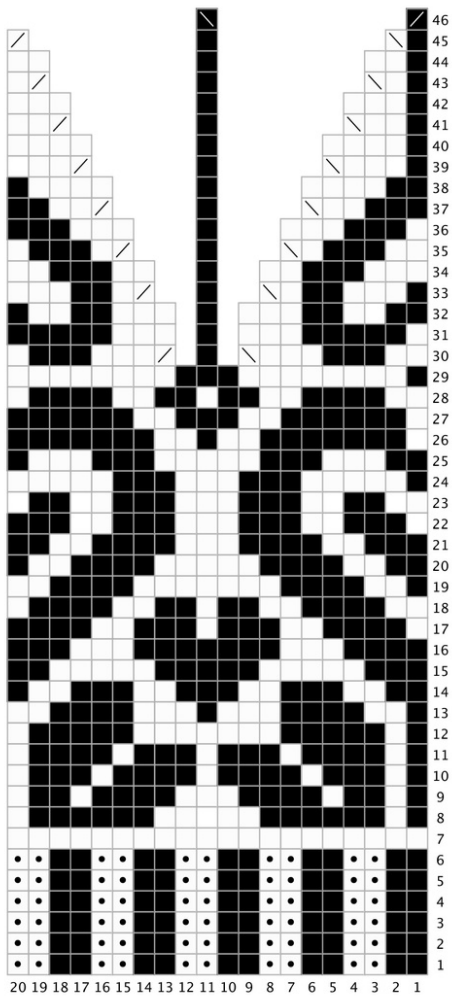
KEY

-  knit
-  k2tog
-  ssk
-  purl
-  MC
-  CC

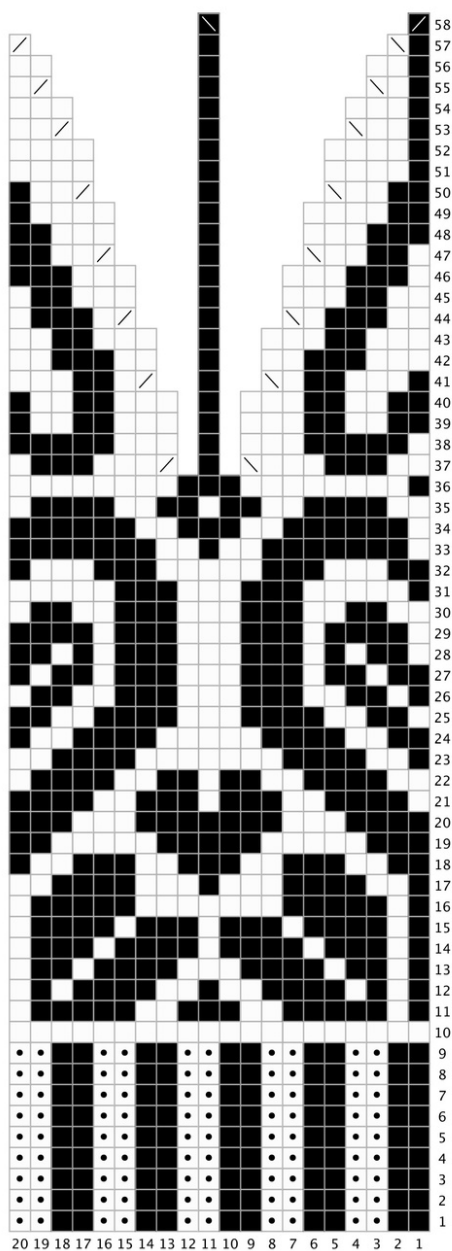
COLD HEARTS HAT

LIGHTER MC

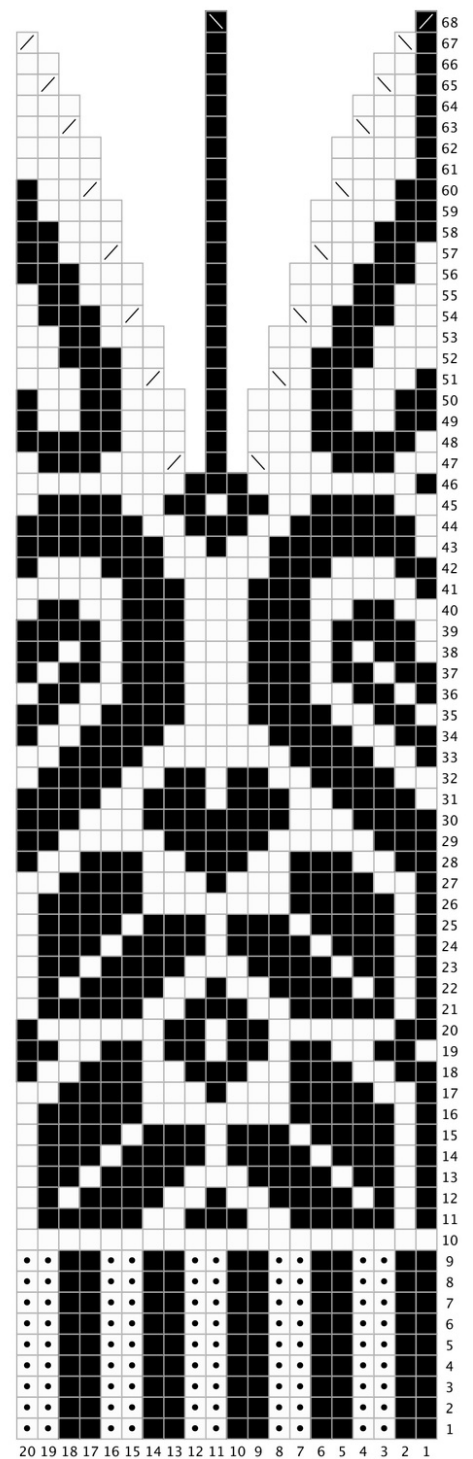
KIDS' CHART



SHORT CHART



TALL CHART



KEY

- knit
- k2tog
- ssk
- purl
- MC
- CC
- C2

COLD HEARTS HAT

ABBREVIATIONS

BOR	beginning of round
CC	Contrast Color
CO	Cast on
K	knit
k2tog	knit 2 together
MC	Main Color
P	purl
ssk	slip, slip, knit
st(s)	stitch(es)

For pattern support, please visit my Ravelry Group,
Boyland Knitworks. You can contact the designer at
boylandknitworks@gmail.com.

Find more designs by Caitlin Hunter at
www.boylandknitworks.com

On Ravelry as: [boylandknitworks](#)

Follow me on Instagram: [boylandknitworks](#)

Share your finished objects and see others on social
media with the tags [#boylandknitworks](#) and
[#coldheartshat](#)

Thank you for supporting independent design!

