

cold hearts COWL



By Caitlin Hunter

BOYLAND
KNITWORKS

cold hearts

COWL

MATERIALS

Yarn:

The Farmer's Daughter Fibers Pishkun
100% Non-Superwash MT & WY Rambouillet
255 yards [142 m] / 100g
Heavy DK/Light Worsted Weight

Sample shown in:

MC: PBR (blue)

CC: Elk Antler (beige)

Needles:

Main: US 7 [4.5 mm] circular needle 16" [40 cm] length for the hat body.

Ribbing: US 6 [4.0 mm] circular needle, 16" [40 cm] length

Notions: Stitch Marker, darning needle, scissors, balloon or bowl for blocking

GAUGE

20 sts and 28 rounds = 4 inches [10 cm] in colorwork and stockinette on main gauge needles.

Note- You should always knit your swatch the same way that the pattern is knit—in this case, in the round. Block your swatch as you will your finished garment and allow it to dry fully before measuring.

Size: One Size

Circumference: 20" [51 cm]

Height: 10" [25.5 cm]

Height:

Yardage: *Please note that yardage is estimated, and can vary between knitters.*

MC : 100 yards [91.5m]

CC : 95 yards 87 m]

cold hearts COWL

CHART

KEY

DIRECTIONS

With ribbing needles MC, CO 80 (100) sts using your preferred cast-on method. Sample uses Long Tail Cast-On. Join in the round and PM to indicate BOR, taking care not to twist sts.

Chart

Begin working the chart for your size as shown. After completing ribbing (round 9), switch to main needles.

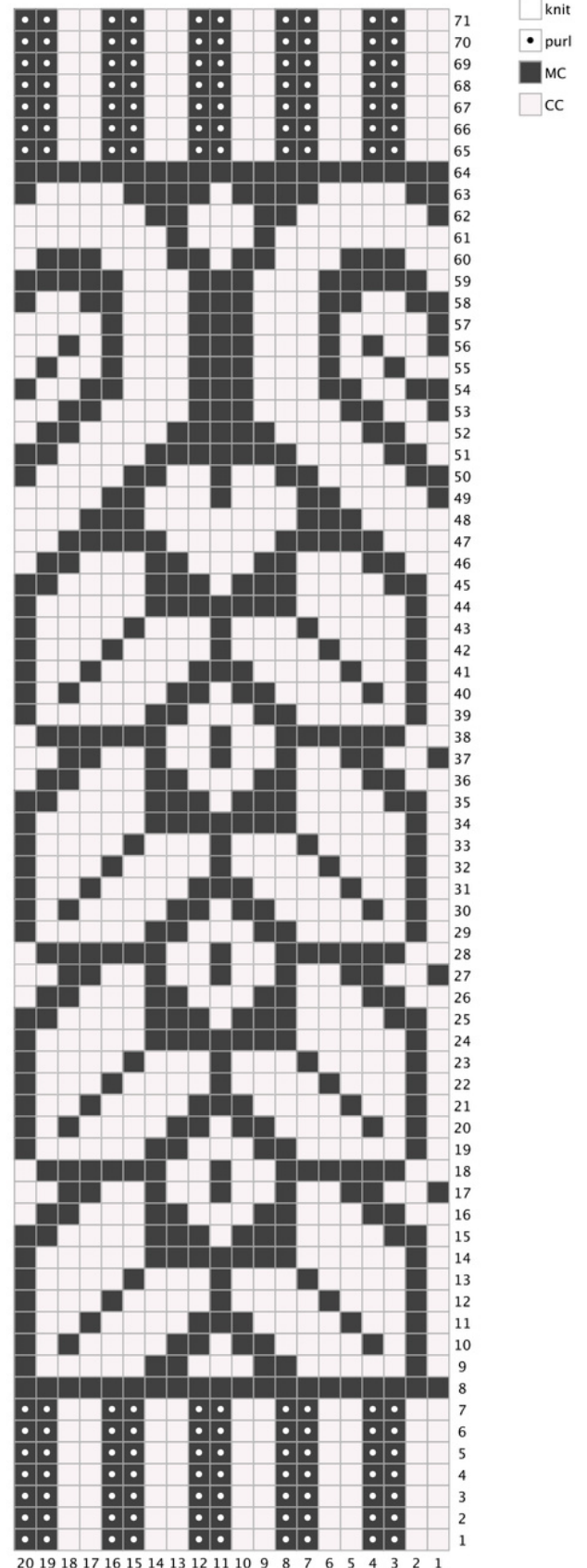
Work through all rounds of the chart. Switch back to ribbing needles for ribbing at the top of the cowl (round 65).

Break CC. Bind off using a stretchy bind-off method. Sample uses Jenny's Surprisingly Strwthc

Finishing

Weave in ends. Steam- or wet-block to finished measurements.

Enjoy your cowl!



cold hearts COWL

ABBREVIATIONS

BOR	beginning of round
CC	Contrast Color
CO	Cast on
K	knit
MC	Main Color
P	purl
st(s)	stitch(es)

For pattern support, please visit my Ravelry Group,
Boyland Knitworks. You can contact the designer at
boylandknitworks@gmail.com.

Find more designs by Caitlin Hunter at
www.boylandknitworks.com

On Ravelry as: [boylandknitworks](#)

Follow me on Instagram: [boylandknitworks](#)

Share your finished objects and see others on social
media with the tags [#boylandknitworks](#) and
[#coldheartscowl](#)

Thank you for supporting independent design!

