

b u n n y h u g

the petite knitter



NOTES

The bunny hug jumper is knitted "top-down" and in the round. It has colourwork motif throughout and increases to fit your fur friend's comfortably. This was designed for a little bunny so if you have a kitty or a small pup you'd like to knit this for, you can adjust the increases based on how 'round' your fur buddy is. Colourwork chart is read from bottom to top and right to left.

GAUGE

22 sts x 29 rnds by 10cm x 4" in colourwork

YARN - SPORT

Mc - The Farmers Daughters Fibers Recollect Eagle Eye

Cc - Similar weight scrap yarn in white

CIRCULAR NEEDLES / DPNS

3.5mm needle / Size US 4 or size necessary to obtain gauge

ABBREVIATIONS

bor - beginning of rnd

co - cast on

cc - contrasting colour

dpn - double pointed needles

inc - increases

k - knit

p - purl

m1 - make one stitch

mc - main colour

pm - place marker

st(s) - stitch(es)

rnd(s) - round(s)

NOTIONS

Stitch markers

Tapestry needle

Stitch holders / Waste yarn

FINISHED MEASUREMENTS

Neckhole: 26cm / 10"

Length: 16cm / 6"

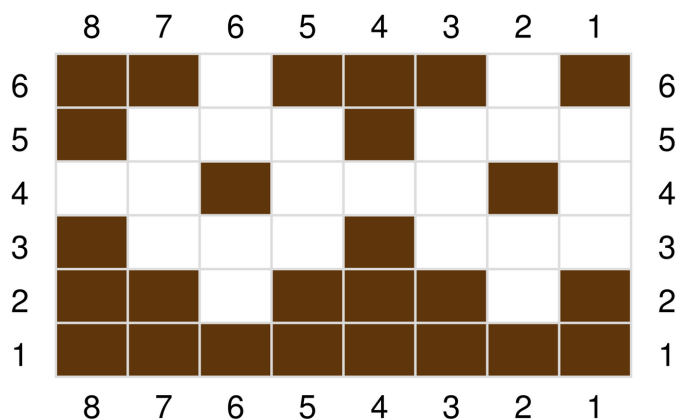
Body hole: 40cm / 16"

BEGIN PATTERN

With mc, co 66 sts on. Join in the rnd. Pm to mark bor. *k1, p1* until work measures 1.5cm / 0.6" from co edge.

Inc rnd 1: k1, m1, k to last sts, m1, k1 (68 sts) (2 sts inc)

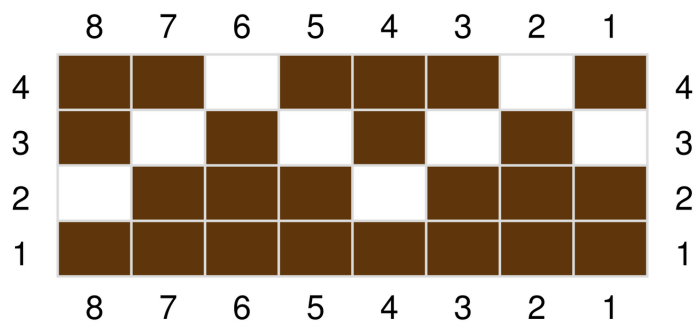
Knit chart a.



Inc rnd 2: k1, m1, k to last sts, m1, k1 (70 sts) (2 sts inc)

Inc rnd 3: k1, m1, k to last sts, m1, k1 (72 sts) (2 sts inc)

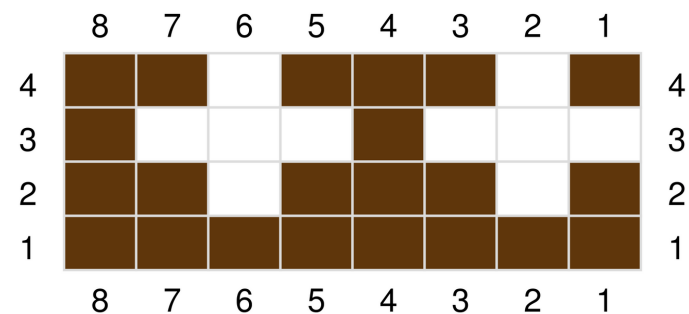
Knit chart b.



Inc rnd 4: k1, m1, k to last sts, m1, k1 (74 sts) (2 sts inc)

Inc rnd 5: k1, m1, k to last sts, m1, k1 (76 sts) (2 sts inc)

Knit chart c.



FEET HOLE

Knit the first 10 sts, place the next 8 sts on scrap yarn or stitch holder, backwards loop cast-on 8 sts. Continue knitting the next 36 sts, place 8 sts on scrap yarn or stitch holder, backwards loop cast-on 8 sts and knit the last 10 sts.

Inc rnd 6: k1, m1, k to last sts, m1, k1 (78 sts) (2 sts inc)

Inc rnd 7: k1, m1, k to last sts, m1, k1 (80 sts) (2 sts inc)

Knit chart d.

	8	7	6	5	4	3	2	1	
5									5
4									4
3									3
2									2
1									1
	8	7	6	5	4	3	2	1	

Inc rnd 8: k1, m1, k to last sts, m1, k1 (82 sts) (2 sts inc)

Inc rnd 9: k1, m1, k to last sts, m1, k1 (84 sts) (2 sts inc)

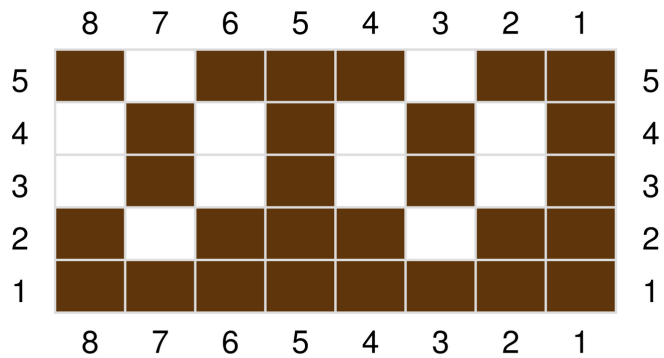
Knit chart e.

	8	7	6	5	4	3	2	1	
5									5
4									4
3									3
2									2
1									1
	8	7	6	5	4	3	2	1	

Inc rnd 10: k1, m1, k to last sts, m1, k1 (86 sts) (2 sts inc)

Inc rnd 11: k1, m1, k to last sts, m1, k1 (88 sts) (2 sts inc)

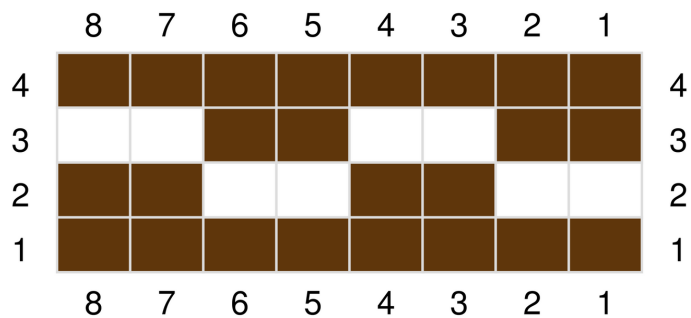
Knit chart f.



Inc rnd 12: k1, m1, k to last sts, m1, k1 (90 sts) (2 sts inc)

Inc rnd 13: k1, m1, k to last sts, m1, k1 (92 sts) (2 sts inc)

Knit chart g.



Inc rnd 14: k1, m1, k to last sts, m1, k1 (94 sts) (2 sts inc)

HEM

k1,p1 until work measures 1.5cm / 0.6". Bind off.

FEET

Transfer 8 sts from scrap yarn or stitch holder to dpns. Attach main colour.

Pick up an additional 8 sts. Distribute sts evenly on dpns. Join in the rnd. Pm to mark bor. K all sts until work measures 1cm / 0.4". *k1,p1* until ribbing measures 1cm / 0.4". Repeat all steps for second feet.

FINISHING

Bind off. Weave in all ends. Wet block.

b u n n y h u g

the petite knitter



COPYRIGHT \ \ THEPETITEKNITTER
SHARE \ \ #THEPETITEKNITTER

