



# BANA Hoodie Vest

BANA Hoodie Vest is a cute vest with a hoodie, and a zipper. It is worked from the bottom up in the round, and front and back are separated for the armholes.

After working the back, the front will be separated for the zipper.

The shoulders are seamed and the hood will be worked.

Installing a zipper is optional.





# BANA HOODIE VEST

#banahoodievest

BANA Hoodie Vest is a cute vest with a hoodie, and a zipper. It is worked from the bottom up in the round, and front and back are separated for the armholes.

After working the back, the front will be separated for the zipper.

The shoulders are seamed and the hood will be worked.

Installing a zipper is optional.

I hope you love the Bana Hoodie Vest and please share your work on Ravelry or Instagram using #banahoodievest

If you have any questions about the pattern, please feel free to contact me :)



@bana\_knitting



banaknittingkal@gmail.com

## SIZE & MEASUREMENTS

(S) M (L/XL)

Bust approx : (108) 120 (130)cm

Full Length approx : (50) 53 (55)cm

Armhole appox : (20) 23 (25)cm

It is designed to have approx. 15-20cm of positive ease.

## YARN

Bulky (7 wpi)

Approximately (600)650(700)m

Size M with Nutiden version.

- Approx 220g Höner och Eir Nutiden  
2 strands

held together with

- Approx 250g Chunky Mohair  
Ladybug Yarn (200-225m per 100g)

## NEEDLES

- 6mm circular needles for the zipper cover
- 6.5mm circular needles for armhole ribbing
- 7mm circular needles for the rest

## GAUGE

12sts x 18rows = 10cm x 10cm in stockinette stitch with 7mm needles, after blocking.

## NOTIONS

- Stitch makers
- Stitch holder or waste yarn
- Tapestry needle

If you install the zipper

- Sewing pins
- Sewing needle
- Sewing thread
- 20cm Zipper

# INSTRUCTIONS

## ABBREVIATIONS

- **RS**: Right Side
- **WS**: Wrong Side
- **SM**: Slip Marker
- **PM**: Place Marker
- **BOR**: Beginning of row (round)
- **K**: Knit
- **P**: Purl
- **K1tbl**: knit 1 stitch through the back loop
- **SSK**: Slip, Slip, Knit

Slip the first stitch as if to knit, slip the second stitch as if to knit, then slide the left-hand needle into the front part of both stitches and knit them together

- **K2tog**: Knit Two Together

Insert the right knitting needle through the first two stitches as if to knit, then knit these two stitches at the same time.

- **sl1wyif**: slip 1 with yarn in front knitting
- **M1L**: Make 1 Left

Insert the LH needle from front to back under the bar between the stitches then knit this bar through the back loop

- **M1R**: Make 1 Right

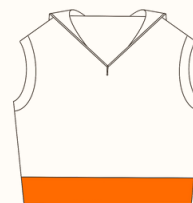
Insert the LH needle from back to front under the bar between the stitches then knit this bar through the front loop

## CAST ON

Cast on (130) 146 (158) sts on 7mm circular needles using "Tubular Cast on Using Judy's Magic Cast on" or preferred method.

Join in the round and PM for BOR.

## BODY RIBBING



(7) 7 (7) cm  
from the cast on edge.

Row1: \*K1tbl, P1\*, repeating from \* - \* until the end.

Repeat row1 for 7cm or your desired length from the cast on edge.

## BODY



(30) 30 (30) cm  
from the cast on edge.

Work in stockinette stitch until the vest measures 30cm or your desired length from the cast on edge.

**i** Unlike a top-down method, it is hard to know the appropriate length when knitting a bottom-up vest as you cannot try on. Measuring the length of one of your favourite sweaters from the edge to the armhole helps to know the appropriate length.

## DIVIDE FOR ARMHOLE

Next row (RS):

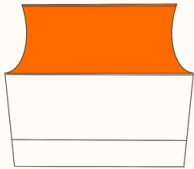
Bind off 5 (9) 11 sts.

K (60) 64 (68) sts and place these sts on a stitch holder. (front)

Bind off (5) 9 (11) sts.

K (59) 63 (67) sts (back)

## BACK



(50) 53 (55) cm  
from the cast on edge.

There are (60) 64 (68) sts on the needle.

With wrong side of work facing,

Next row(WS) : P all sts

Then,

Row1(RS): K1, SSK, K to the last 3sts, K2tog and K1 (2sts decreased)

Row2(WS): P all sts

Repeat the last 2 rows (3) 4 (5) times in total.

(6) 8 (10) sts decreased in total.

There are (54) 56 (58) sts on the needle.

Continue work in stockinette st until (50) 53 (55) cm or your desired length from the cast on edge.

Ending with a WS row.

Next row(RS) :

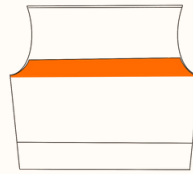
K (14) 15 (15) and place these sts on the stitch holder or waste yarn (right shoulder)

K (26) 26 (28) and place these sts on the stitch holder or waste yarn (neck)

K (14) 15 (15) and place these sts on the stitch holder or waste yarn (left shoulder)

Break Yarn.

## FRONT



(7) 7 (7) cm  
from the front and back  
separation.

There are (60) 64 (68) sts on the needle.

With wrong side of work facing, join the yarn and work as follow.

Next row(WS) : P all sts

Then,

Row1(RS): K1, SSK, K to the last 3sts, K2tog and K1 (2sts decreased)

Row2(WS): P all sts

Repeat the last 2 rows (3) 4 (5) times in total.

(6) 8 (10) sts decreased in total.

There are (54) 56 (58) sts on the needle.

Continue work in stockinette st for 6cm or desired length from the front and back separation.

Ending with a WS row.

**i** If you wish to have a long zip then work shorter than 6cm. The shorter you work in stockinette, the zipper will be longer. If you do not wish to install a zipper, you could knit longer than 6cm.

## DIVIDE LEFT AND RIGHT FRONT

Next row (RS):

K (24) 25(26) sts and K1, sl1wyif, K1

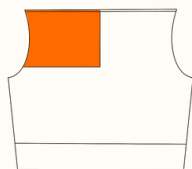
Place these sts on the stitch holder or waste yarn (left front)

K1, sl1wyif, K1 and K to end (right front)

Now left and right side of the front is separated.

## RIGHT FRONT

---



Row 1 (WS) : P to the last 3 sts, sl1wyif, K1, sl1wyif

Row2 (RS) : K1, sl1wyif, K1 and K to the end

Repeat Row 1 and Row 2 until the work measures the same as the back.

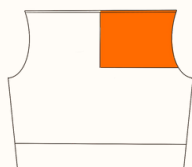
Ending with a WS row.

Place the rest sts on the stitch holder or waste yarn.

Break the yarn.

## LEFT FRONT

---



With wrong side of work facing, join the yarn and work as follow.

Row 1 (WS) : sl1wyif, K1, sl1wyif and P to end

Row2 (RS) : K to last 3 sts, K1, sl1wyif, K1

Repeat Row 1 and Row 2 until the work measures the same as the back.

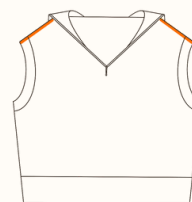
Ending with a WS row.

Place the rest sts on the stitch holder or waste yarn.

Do not break yarn.

## SHOULDERS

---



Place the left shoulder of the back sts (14) 15 (15) on the needle.

Place the left shoulder of the front sts (14) 15 (15) on the other needle.

Bind off these sts using 3 needle bind off.

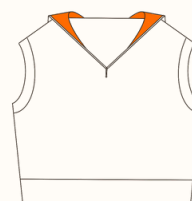
Place the right shoulder of the back sts (14) 15 (15) on the needle.

Place the right shoulder of the front sts (14) 15 (15) on the other needle.

Bind off these sts using 3 needle bind off.

## HOOD

---



Place the right front (13) 13 (14), neck (26) 26 (28) and left front (13) 13 (14) sts onto the 7mm needle.

There are (52) 52 (56) sts on the needle.

With right side of work facing, join the yarn and work as follow.

Next row (RS) :

K1, sl1wyif, K1 and K all the right front sts, pick up 3 sts, K all the neck sts, pick up 3 sts, K all left front sts to the last 3 sts and K1, sl1wyif, K1

You have (58) 58 (62) sts

Row 1 (WS) : sl1wyif, K1, sl1wyif, p to last 3 sts and sl1wyif, K1, sl1wyif

Row 2 (RS) : K1, sl1wyif, K1, K (26) 26 (28), PM, K (26) 26 (28) and K1, sl1wyif K1

Repeat Row 1 and Row 2 for 4cm.  
Ending with a WS row.

### Increase rows

Row 1 (RS): K1, sl1wyif, K1, K to 1 st before the marker, M1L, K1, SM, K1, M1R, K to last 3 sts and K1, sl1wyif, K1.

Row 2 (WS) : sl1wyif, K1, sl1wyif, p to last 3 sts and sl1wyif, K1, sl1wyif

Repeat Row 1 and Row 2 3 times in total.  
Ending with a WS row.

### Stockinette rows

Row1 (RS) : K1, sl1wyif, K1, K to last 3 sts and K1, sl1wyif, K1

Row 2 (WS) : sl1wyif, K1, sl1wyif, p to last 3 sts and sl1wyif, K1, sl1wyif

Repeat row 1 and row 2 until the hood measures 28cm.  
Ending with a WS row.

### Decrease rows

Row 1 : K1, sl1wyif , K1, K to 3 sts before the marker, K2tog, K1, SM, K1, SSK, K to the last 3 sts and K1, sl1wyif, K1.

Row 2 (WS) : sl1wyif, K1, sl1wyif , p to last 3 sts and sl1wyif, K1, sl1wyif

Repeat Row 1 and Row 2 3 times in total.

Ending with a WS row.

Divide sts evenly on 2 needles and bind off with kitchener stitch.

## ARMHOLE RIBBING



(3) 3 (3) cm  
from the picked up edge.

With the right side of work facing, from the centre of the underarm, pick up every st where sts are binded off, pick up 2sts every 3 rows then pick up every st where sts are binded off with 6.5mm needles. PM.

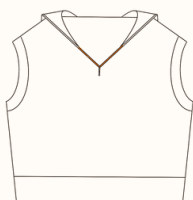
The total sts must be even number.

Row1: \*K1tbl, P1\* , repeating from \* - \* until the end.

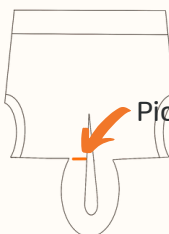
Repeat Row 1 for 3cm or your desired length from the picked up edge.

Bind off using the Italian bind off.

## ZIPPER



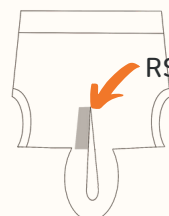
Vest is WS Facing



Pick up 3 sts

With the wrong side of work facing, pick up 3st on the left side from the neck with 6mm needles.

Vest is WS Facing



RS facing

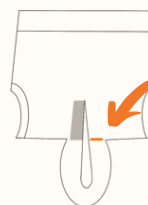
Work back and forth in stockinette st the same length as the side of the open front part from the neck.

**i** It is recommended to knit 20% less than the total length at first, do the steam blocking the cover and knit again. It helps to measure the right length and keeps the fabric from curling.

Ending with a WS row.

Break the yarn and place sts on the stitch holder or waste yarn.

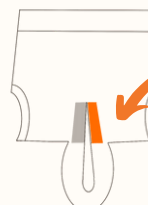
Vest is WS Facing



Pick up 3 sts

With wrong side of work facing, pick up 3st on the right side from the neck with 6mm needles.

Vest is WS Facing

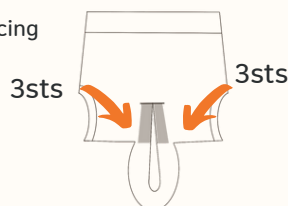


RS facing

Work back and forth in stockinette st the same length as the other side of the cover.

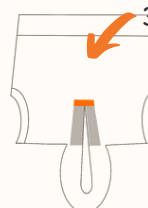
Ending with a WS row.

Vest is WS Facing



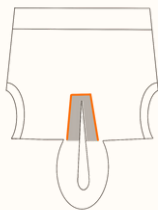
Next Row(RS) : K3 and join the 3st from the stitch holder or waste yarn, K3

Vest is WS Facing



3cm of Stockinette stitch

Work 3 cm back and forth in stockinette stitch.  
Bind off.



Sew the cover to the wrong side of the sweater without the front open edge.

Place a zipper between two layers (zipper cover and front fabric) and check the appropriate length of the zipper.

Cut the length of the zipper so that it fits between the knitted fabric.

Put sewing pins to hold the zipper with the knitted fabric.

Sew the two layers with the zipper together at the same time.

**i** Please note that if you hold the fabric with your hands tight while sewing, the knitted fabric could be curled, so put it down on a flat surface and sew.

## FINISHING

---

Weave in all remaining yarn ends.

Please share your work on Ravelry and Instagram. Thank you :)

#banahoodievest

## HAPPY KNITTING!