



Bambi (EN)





Introduction

As a painter I am used to white canvases. And I am crazy about deer. So this scarf is a combination of both worlds. It is more like a knitted painting. The charts were my canvases and I wanted to break out of the traditional and very geometrical routine of fair isle knitting.

The scarf is knitted back and forth what might be a new technique for some of you. At least I'd never knit Fair Isle flat before but I found a good tutorial that makes it easy, quick and FUN to knit back and forth. Imagine, you might start to enjoy the purl rows :-)

Yarn

Main yarn (A)

2 skeins of Rowan fine art (45 %Wool, 25% Nylon, 20% Mohair, 10% Silk) 437 yrd/100 g color 304 Raven

Yarn B

30 g of Holst Garn Supersoft 100% uld (100% wool) 314 yds/ 50 g color 28 sage blue

Yarn C

30 g of Holst Garn Supersoft 100% uld (100% wool) 314 yds/ 50 g color 85 willow

Gauge

32 st x 26 rows = 4 x 4 inch in fair isle pattern on needle US 3 after blocking.

Needles

Circular or straight needles size 3,25 and size 3 mm or size needed to reach gauge.

Measurement

79 x 15 inch

Materials

To be able to follow the chart you will need a chart reader and 10 markers. Some paper, glue and scissors to create a big chart.

There are two version of the chart added to the pattern. The first one is spread over 4 pages. They will be assembled together as one so you can read it on your chart reader. The other version is a single page for working on a tablet.

Techniques

Flat fair isle knitting. See tutorial

<https://www.youtube.com/watch?v=oVtXJJQxqMU>

If this technique is new to you you might want to experiment a little. For example, I ended up pulling the yarn from underneath the needle instead of from the top. Keep in mind that the most important thing is a relaxed way of knitting and catching the floats easily.



Stitch guide

1/1 rib

RS: *knit, purl* to end

WS: *purl, knit* to end

Edges

RS: beg of row: Slide the first stitch, k2 end of row: k3

WS: beg of row: Slide the first stitch, k2 end of row: k3

Keep knitting the edge throughout the whole project. It is not mentioned in the charts.

Instructions

Start to prepare your chart. The chart is spread into four sheets to obtain the optimal size for reading it. Cut and glue the four sheets together. You will now have one big chart that will fit on your chart reader. With a pen highlight every 10th line. It helps a lot to keep track of where you are. You might also want to put numbers under the boxes (10 rows make one box)

With larger ndl (US 3) cast on 116 st in Main color A.

Row 1: sl the first st, k2,k 1/1 rib to 3 st bef end, k3. Repeat for three more rows.

Start knitting chart A with color A nd B. Place a marker every 10th st within the first row. Keep knitting until chart is done.

CHANGE TO SMALLER NDL (3,00 mm)

WS: sl the first st, k2, p to 3 st bef end, k3

RS: sl the first st, k2, decrease 16 st evenly throughout row to 3 st bef end, k3

Keep knitting in stockinette stitch and edge st with main color for 103 cm or desired length.

RS: sl the first st, k2, increase 16 st evenly throughout row to 3 st bef end, k3

WS: sl the first st, k2, p to 3 st bef end, k3

CHANGE TO BIGGER NDL (US 3)

Knit chart B.

Row 1: sl the first st, k2,k 1/1 rib to 3 st bef end, k3. Repeat for three more rows. Bind off.

Finishing

Weave away the ends and block wet.



Abbreviations

st: stitch(es)

k: knit

RS: right side

WS: wrong side

sl: slide

ndl: needle

p: purl

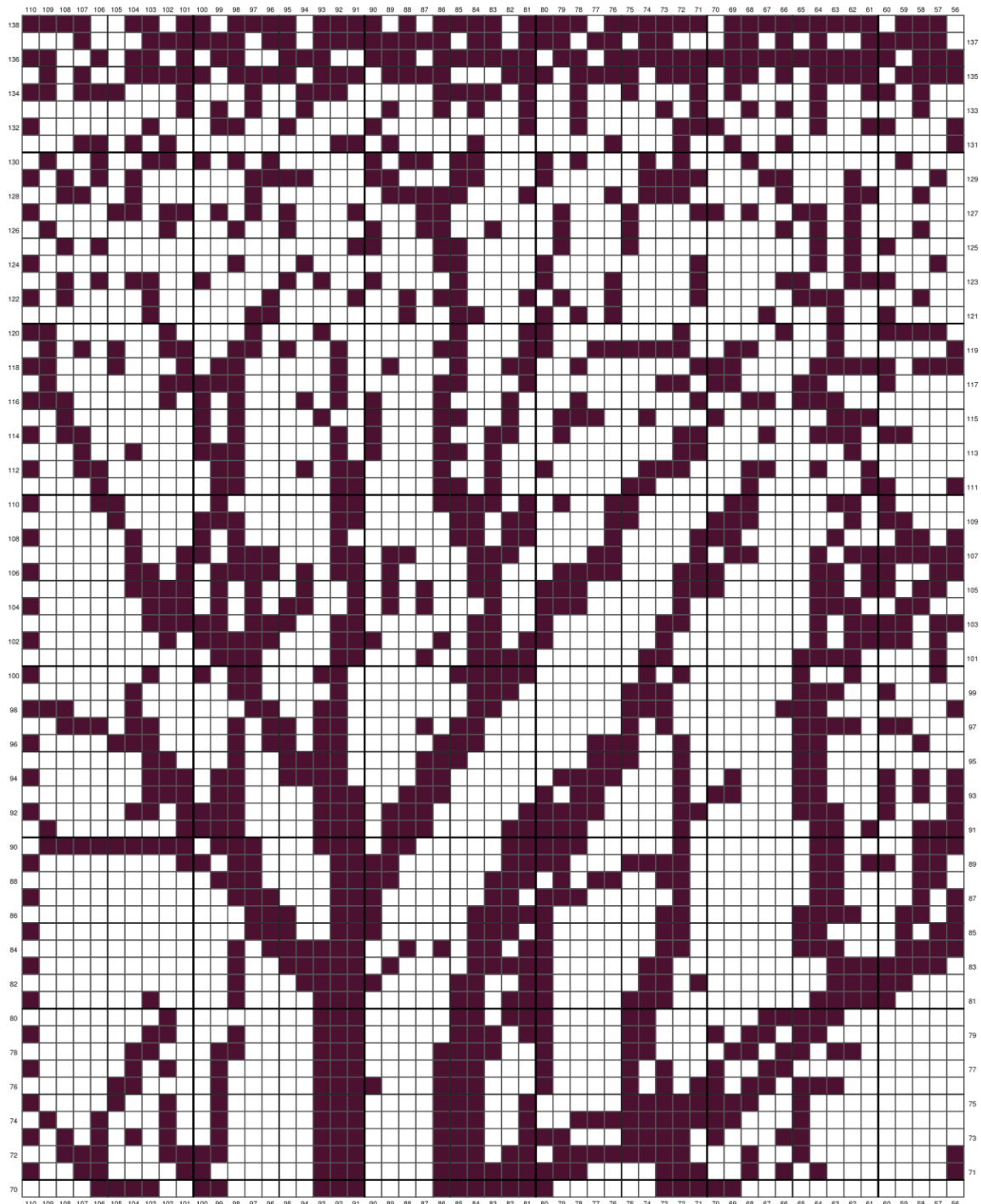
Bambi © 2018 by Sandra Archut/Wollmuschi design

All right reserved This pattern is for personal use only.
No reproduction or distribution of this pattern is allowed.

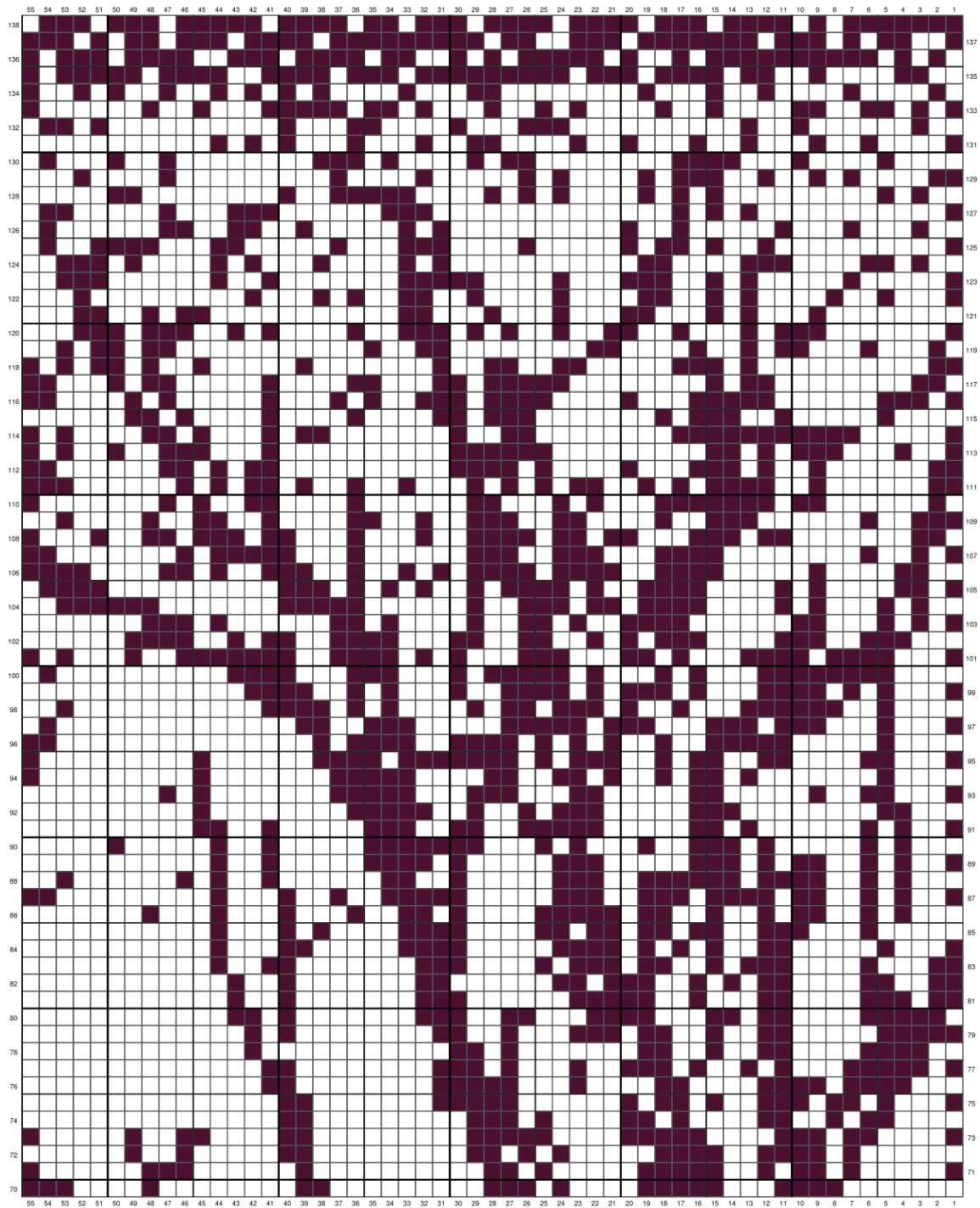


Charts

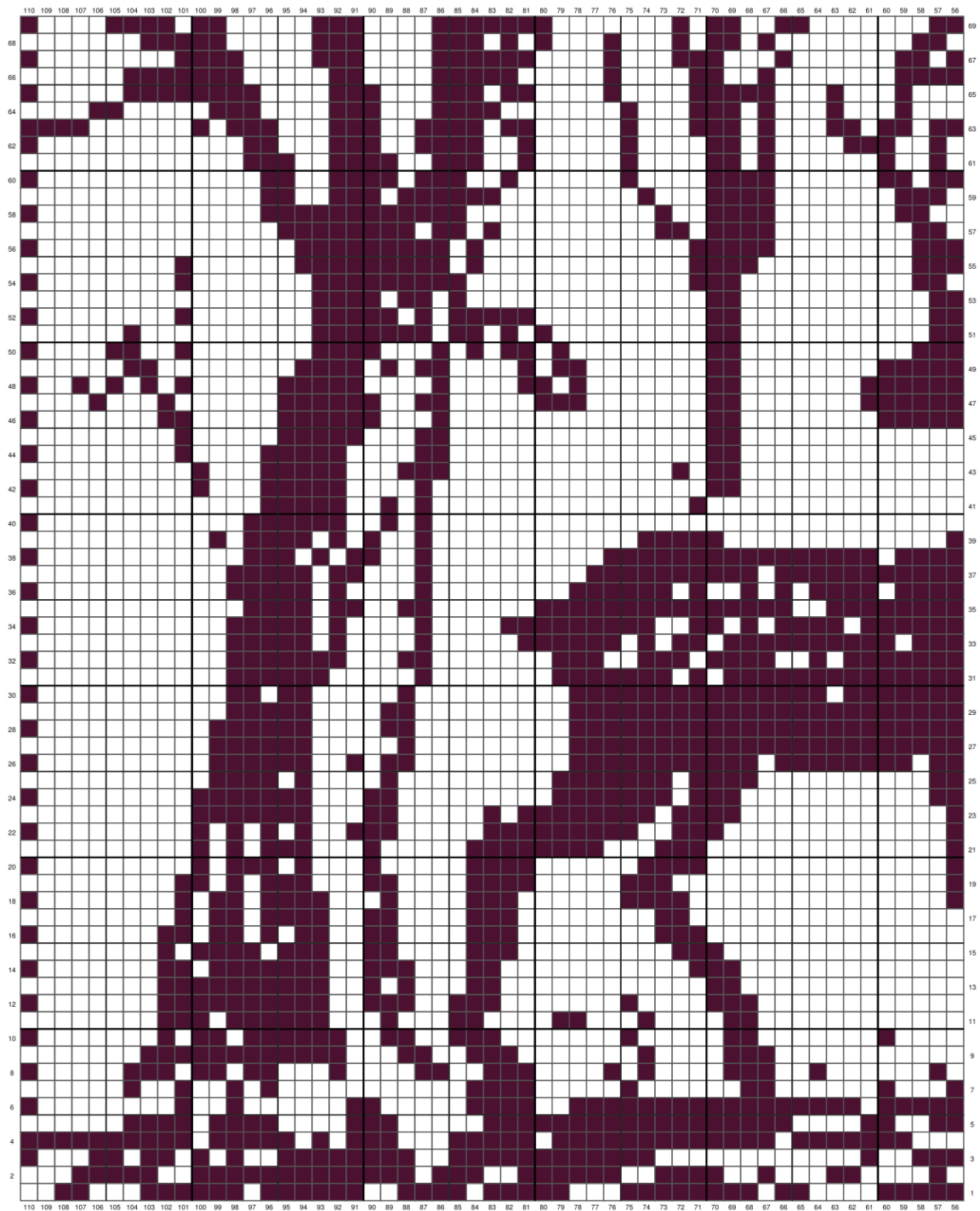
Page 4 of chart A



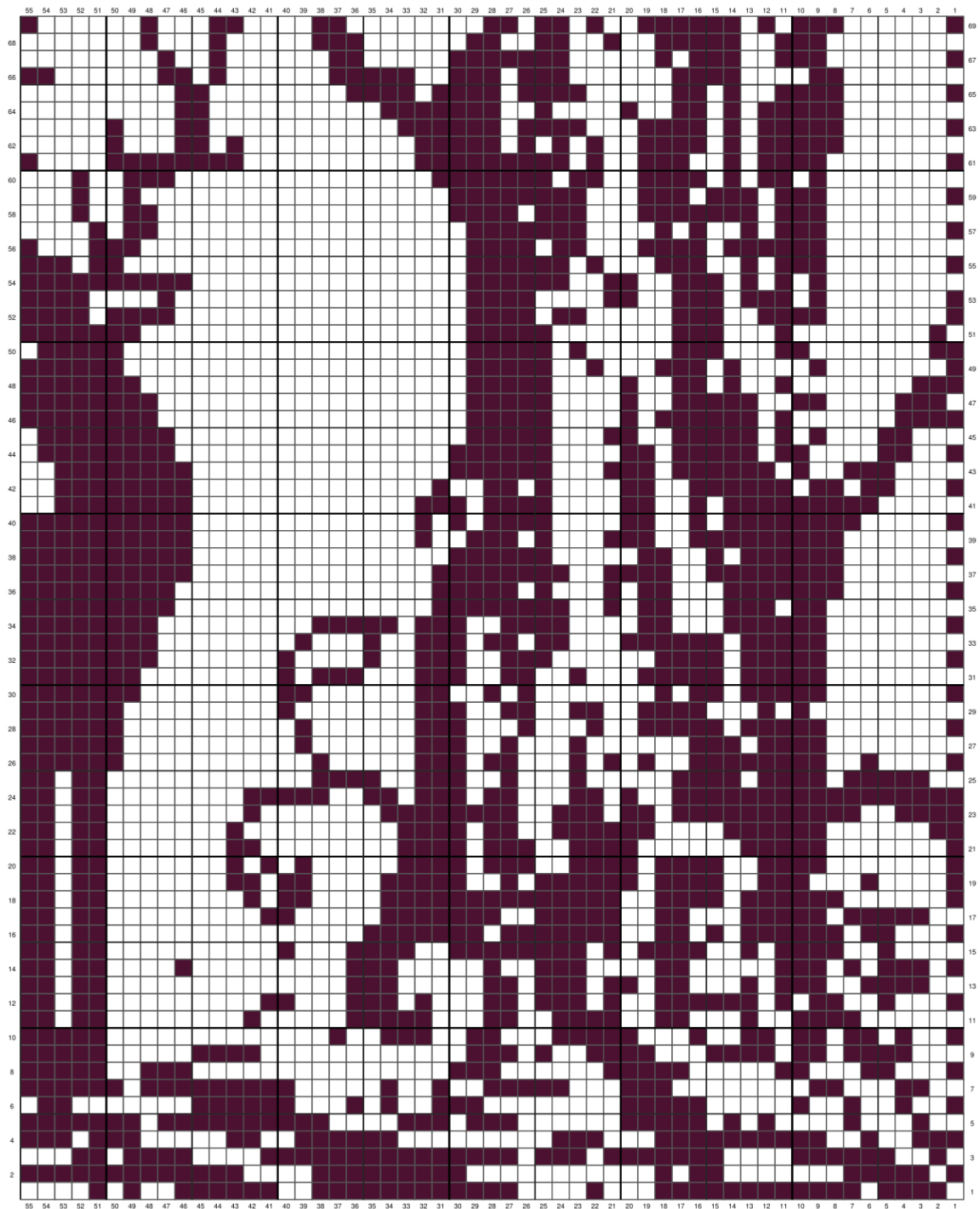
Page 3 of chart A



Page 2 of chart A



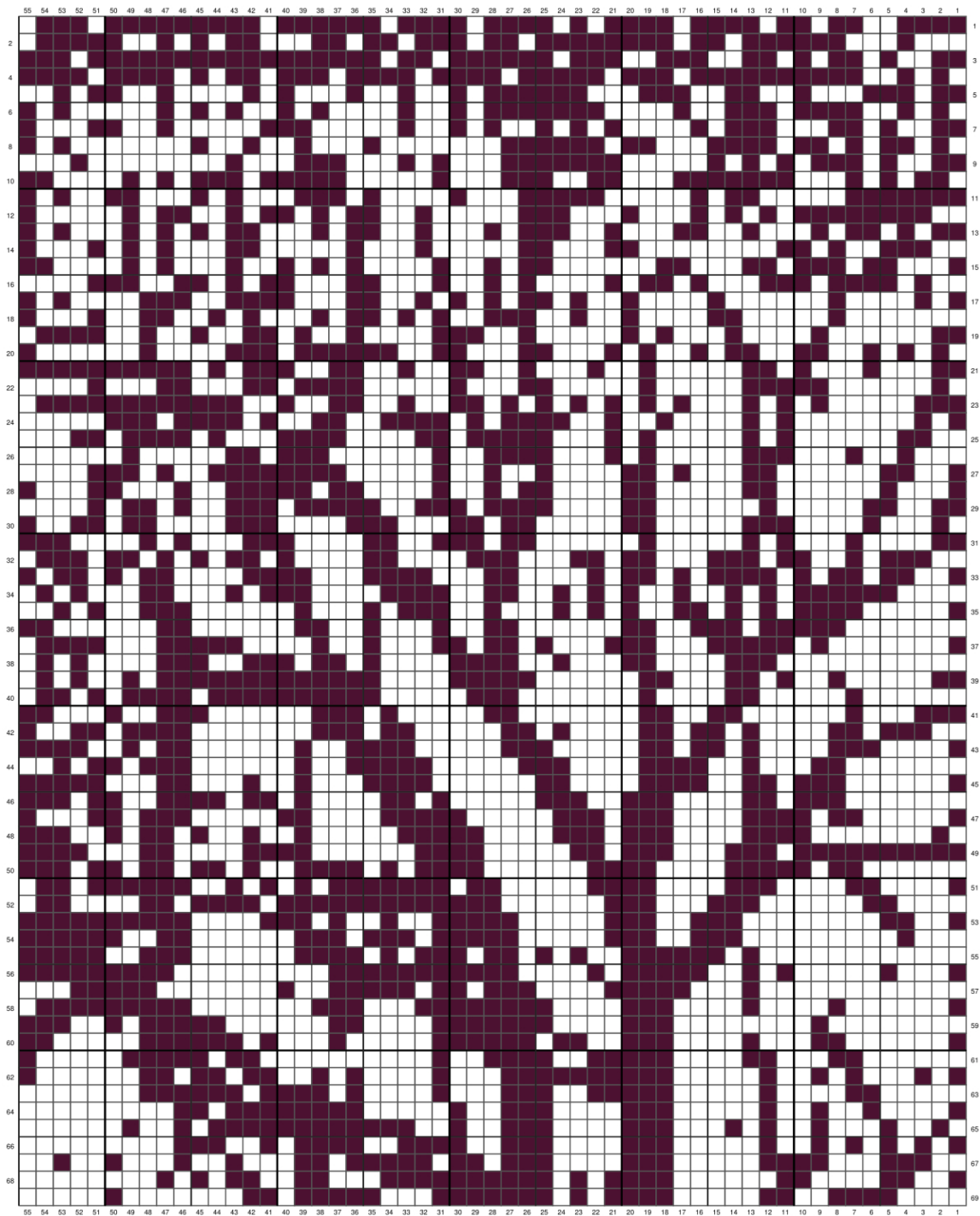
Page 1 of chart A



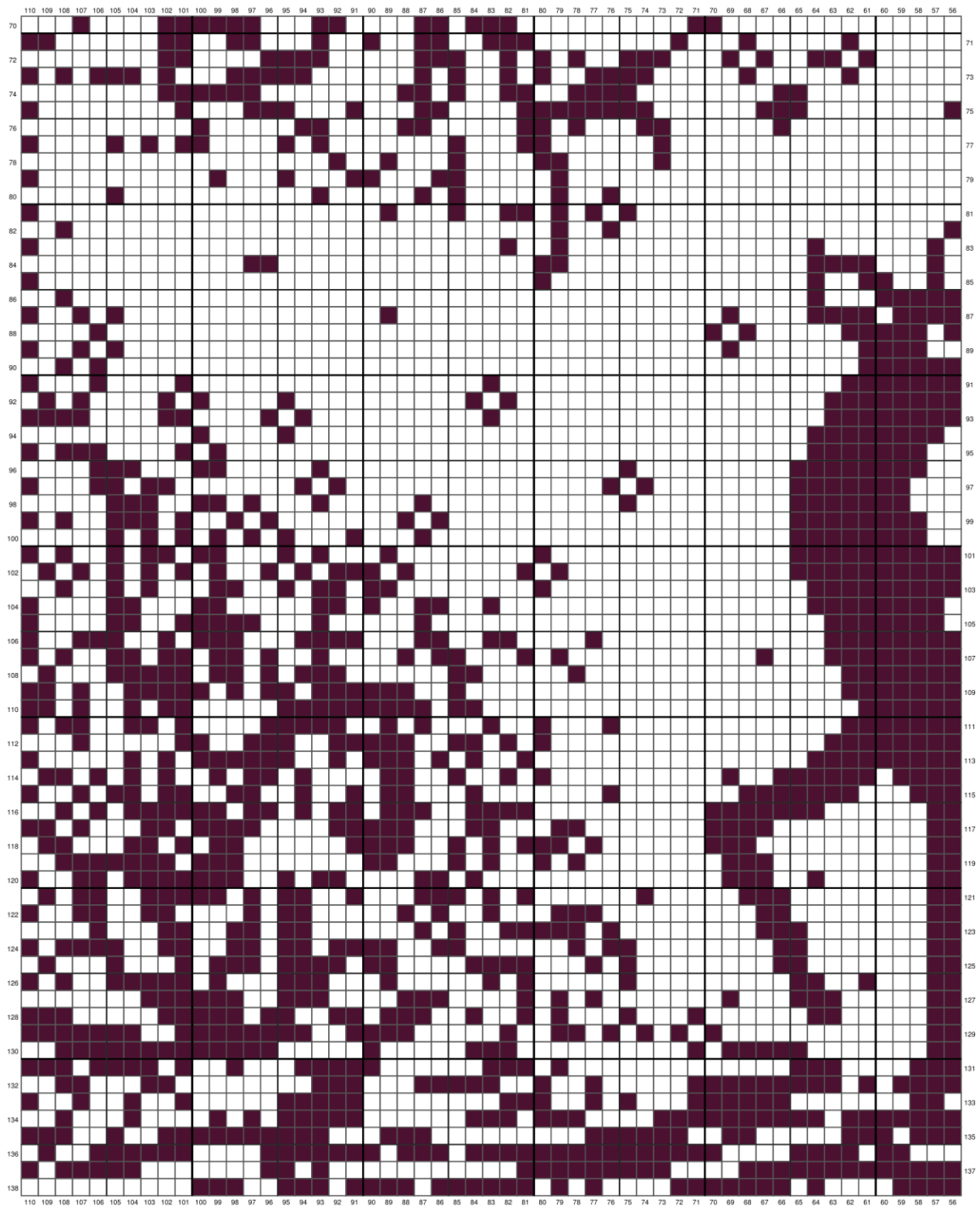
Page 2 of chart B



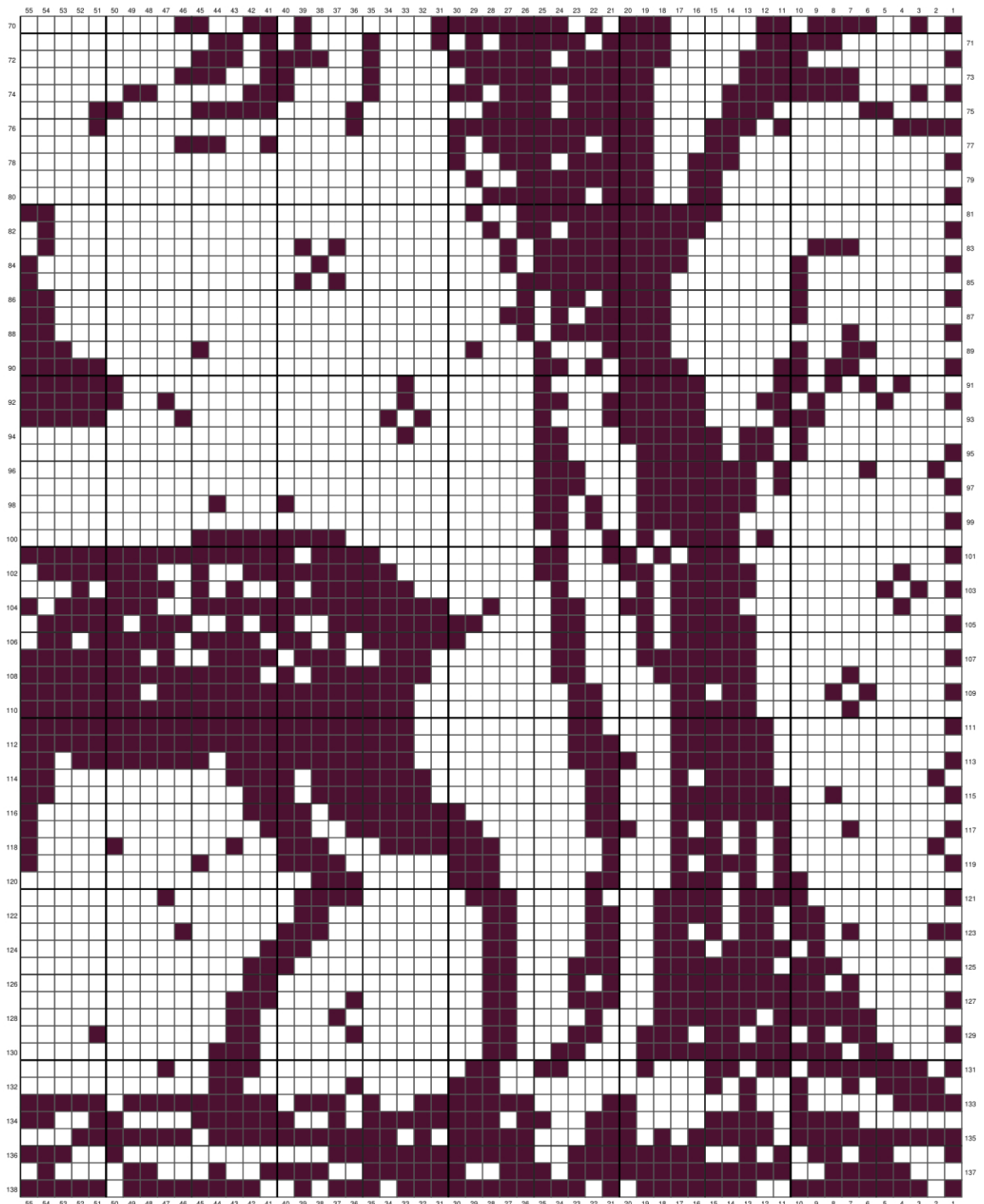
Page 1 of chart B



Page 4 of chart B



Page 3 of chart B





design by
Wollmuschi

