

# AVIARY 2

## JENISE HOPE





# AVIARY THROW PILLOWS PART 2

## JENISE HOPE

*the Rooster, Sparrow, and Pigeon*

*This pattern comes with FIVE colorways! Each has its own set of charts, you may want to look through and print only the relevant ones! Also, any individual pillow may or may not use all yarn colors, please check before buying your yarn!*

### Yarns/colorways

All yarns are fingering weight. The pillows in the photographs were worked up in the rust and steel colorway.

To make three pillows, you will need two skeins/balls of your main color, and less than one each of the contrast colors. If you are using Sunday Knits, you may want to purchase 20g skeins of the less-used contrast colors. If you are using Knit Picks Stroll Tweed, you will want to purchase 2 of each of the three colors.

**Rainbow on White:** Cascade 220 Fingering, 100% Peruvian Highland Wool, 273 yds/50g  
*main (background/edge color): 8505 (white)*

*contrast colors: 9568 (navy), 8975 (blue), 7813 (Teal), 9430 (green), 4147 (yellow), 9622 (orange), 8895 (red), 9477 (pink), 7803 (magenta), 7808 (purple)*

**Rust and steel:** Quince and Co Finch, 100% American Wool, 221 yds/50g  
*main (background/edge color): Frost*

*contrast colors: Gingerbread, Poppy, Sedum, Storm*

**Tonal Tweed:** Knit Picks Stroll Tweed, 65% Superwash Merino Wool 25% Nylon 10% Donegal, 231 yds/50g

*main (background/edge color): Oyster Heather*

*contrast colors: Rabbit Heather (background, but not edge color), Wellies Heather*

**Blue Seas:** Sunday Knits, various fiber contents, various yardage

*main (background/edge color): Ice Angelic*

*contrast colors: Rain Nirvana, Aqua Angelic, Delft Eden, Teal Angelic, Cobalt Eden, Violet Eden, Carrot Eden*

**Navy Stained Glass:** Knit Picks Palette, 100% Peruvian Highland Wool, 231 yds/50g  
*main (background/edge color): Navy*

*contrast colors: Chicory, Majestic, Celestial, Marina, Caribbean, Macaw, Canary, Safflower, Cayenne, Tomato, Cosmopolitan, Fuchsia, Lady Slipper, Oyster Heather*

**Sizes:** to fit standard square pillow sizes 12x12, 14x14, or 16x16. Each pillow design comes in all three sizes. Please note that accurate sizing wholly depends on accurate gauge, but that you can add solid rounds as needed to reach the desired size. You will need additional skeins of yarn if you wish to knit a back for your pillows. I finished mine with fabric backs sewn on.

Or, make a blanket with all 12 squares – 36x48, 42x56, or 48x64, only the squares. Adding on a border will increase the blanket size, as well as eat up additional skeins of yarn.

**Needle size:** 2.5 mm/US 2 you can start your squares on DPNs, two circulars, or one long circular. Use the method you are most comfortable with. Once the square is half-done, you can switch to a 18 or 24 inch long circular, and once it is three quarters done, you can move up

to a 36 or 48 inch long circular to finish. Personally, I prefer to use a 36 inch long circular from start to finish.

**Notions needed:** Yarn needle (to weave in ends), fabric or plain pillow covers to stitch your knit squares to (optional, you can also knit backs)

**Gauge:** 8 sts and 9 rows to 1 inch, in stranded colorwork, blocked

**Finished measurements:** 12 x 12 inches (14 x 14 inches, 16 x 16 inches)

**Skills needed:** invisible cast on in the round, working in the round, stranded colorwork, increases, basic sewing

### How to Start Your Squares:

Cast on 8 stitches using a center-out technique, then work colorwork from chart, 4 repeats.

### Finishing:

(fabric backed pillowcases) cast off, weave in ends, block to required dimensions. When fully dry, sew your knit square to a premade pillowcase or sew one for it.

(knit back) cast off two sides of the pillow, and hold the stitches on two other sides. Note that you want the held stitch sides to be opposite of each other, so you will be alternating cast off side, held side, cast off side, held side. Knit out each end (on its own) in stockinette stitch, back and forth, till it is 6 (7, 8) inches long. Cast off here if you wish to sew a zipper across center back. For an envelope close, work 1x1 ribbing for an additional 2 inches on a smaller needle size. Weave in the tails, and block your rectangle. Once fully dry, fold the knit on ends over the right side of the square, and sew the cast off edges of the square to the sides of your knit extension. If you are inserting a zipper, sew that in, otherwise sew the envelope edges so they overlap 4 inches in the middle of the back. Turn right side out, and you are done!

(blanket) Load the stitches onto scrap yarn. As you complete blocks of your blanket, you can stitch them together using Kitchener stitch or one of the many crochet techniques used for afghans.

### Stitch Glossary:

**Circular Cast on:** Make a slip knot, and knit one stitch into it. Take the slip knot off the needle. Yarnover, then knit into the slip knot. Repeat the yarnover, knit into slip knot until you have the correct number of stitches on your needle (in this pattern, you always need to start with 8). You can end with either a knit or yarn over.

Note that the slip knot should be tied so the free end is the one that makes the loop bigger or smaller, not the end that connects the knot to the ball of yarn.

When you have about 6 rows knit out from the cast on, pull the tail to close the hole.

There are a number of methods for casting on in the round, feel free to use the method you know or YouTube it.

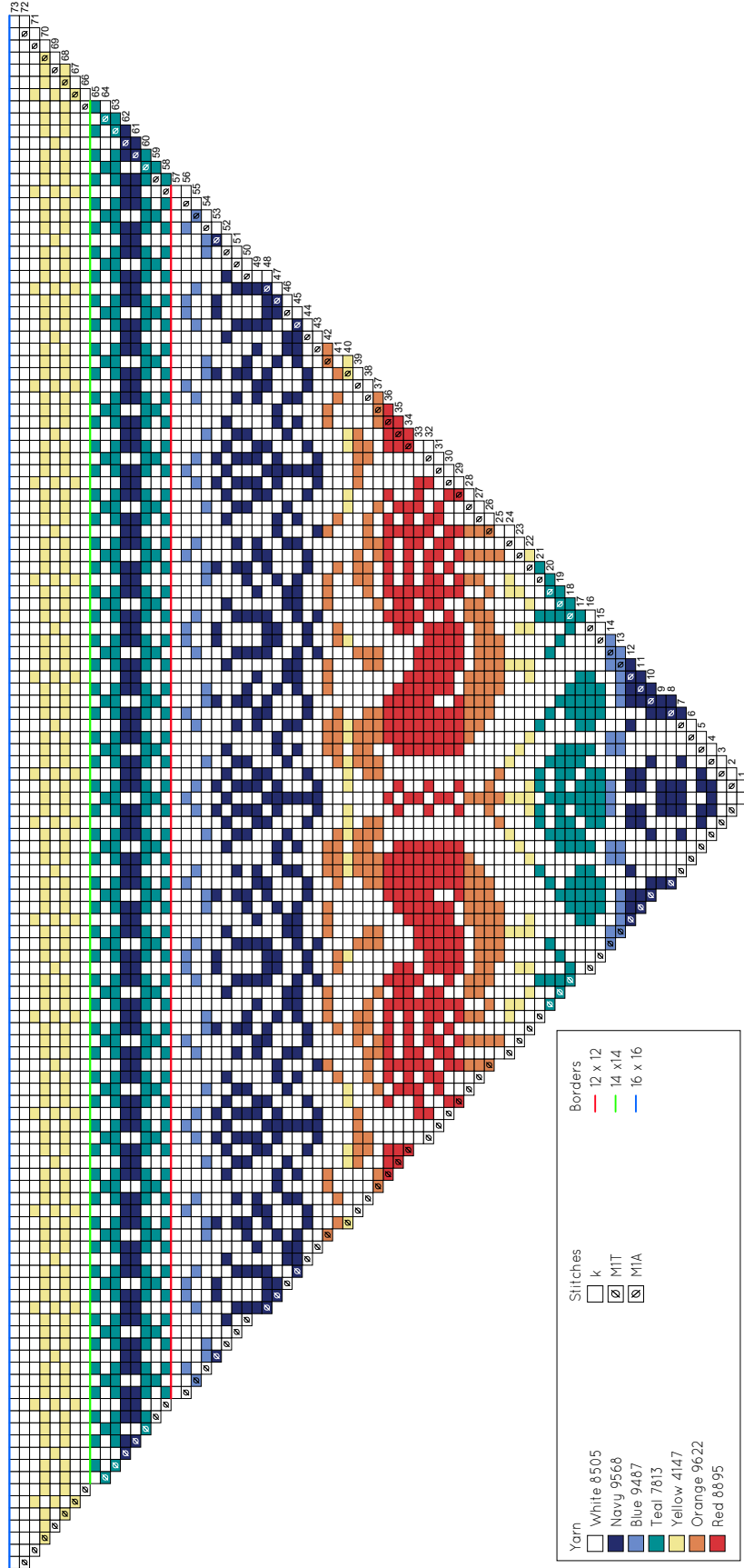
k: Knit.

**M1A (Make 1 Away):** Wrap the working yarn over the left needle, from front to back. From the back of the work, insert the right needle through the front loop and slip to the right needle. On the next round, knit into the loop so there is one twist in the increases legs.

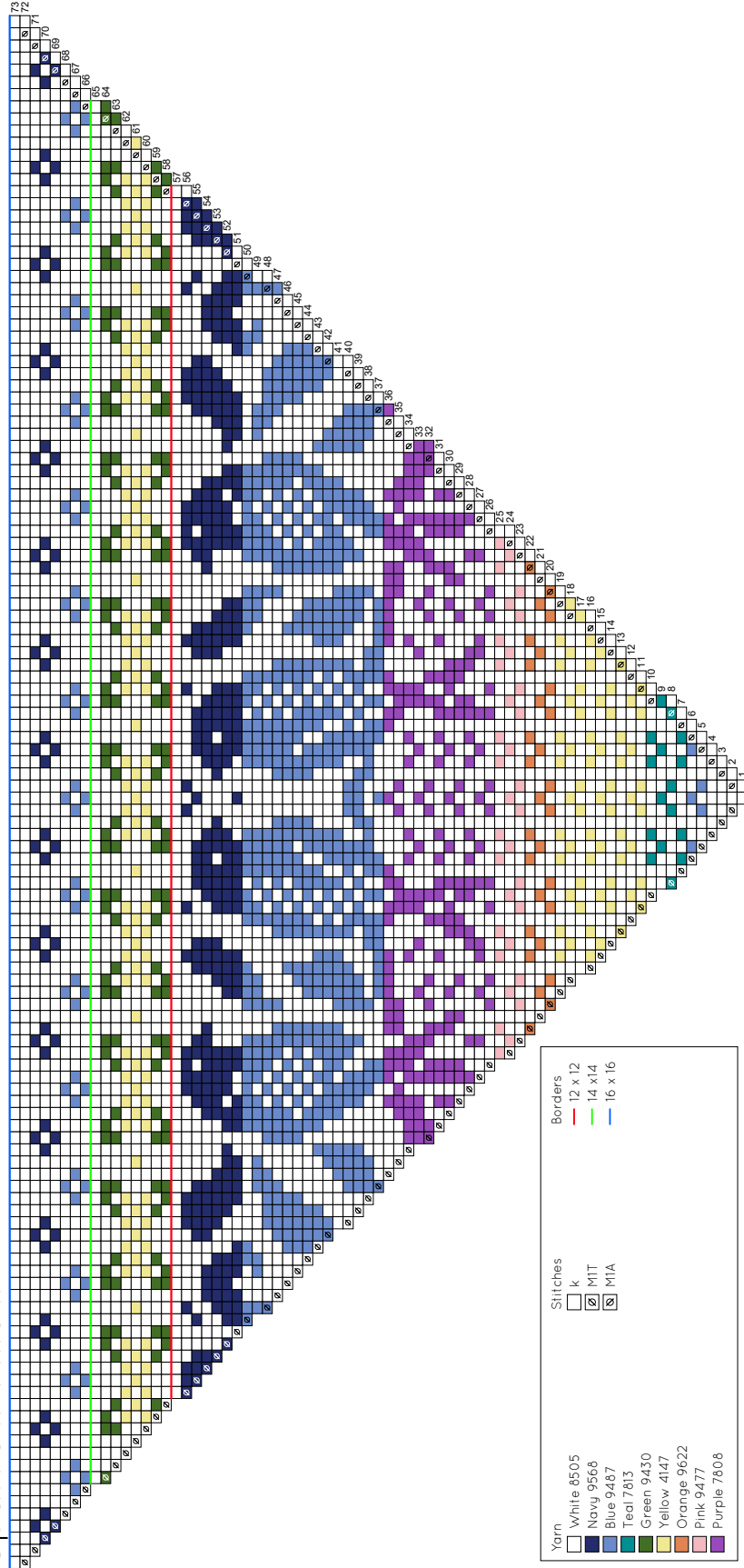
**M1T (Make 1 Towards):** Wrap the working yarn over the right needle, from back to front (clockwise). On the next round, knit into the loop so there is one twist in the increases legs.

If you have any questions or comments regarding this pattern, feel free to contact me through private messages in Ravelry as femininebydesign, or email me at femininebydesign@gmail.com. I am happy to help if you think you may have found a mistake in the pattern or have questions about the sizing or something else.

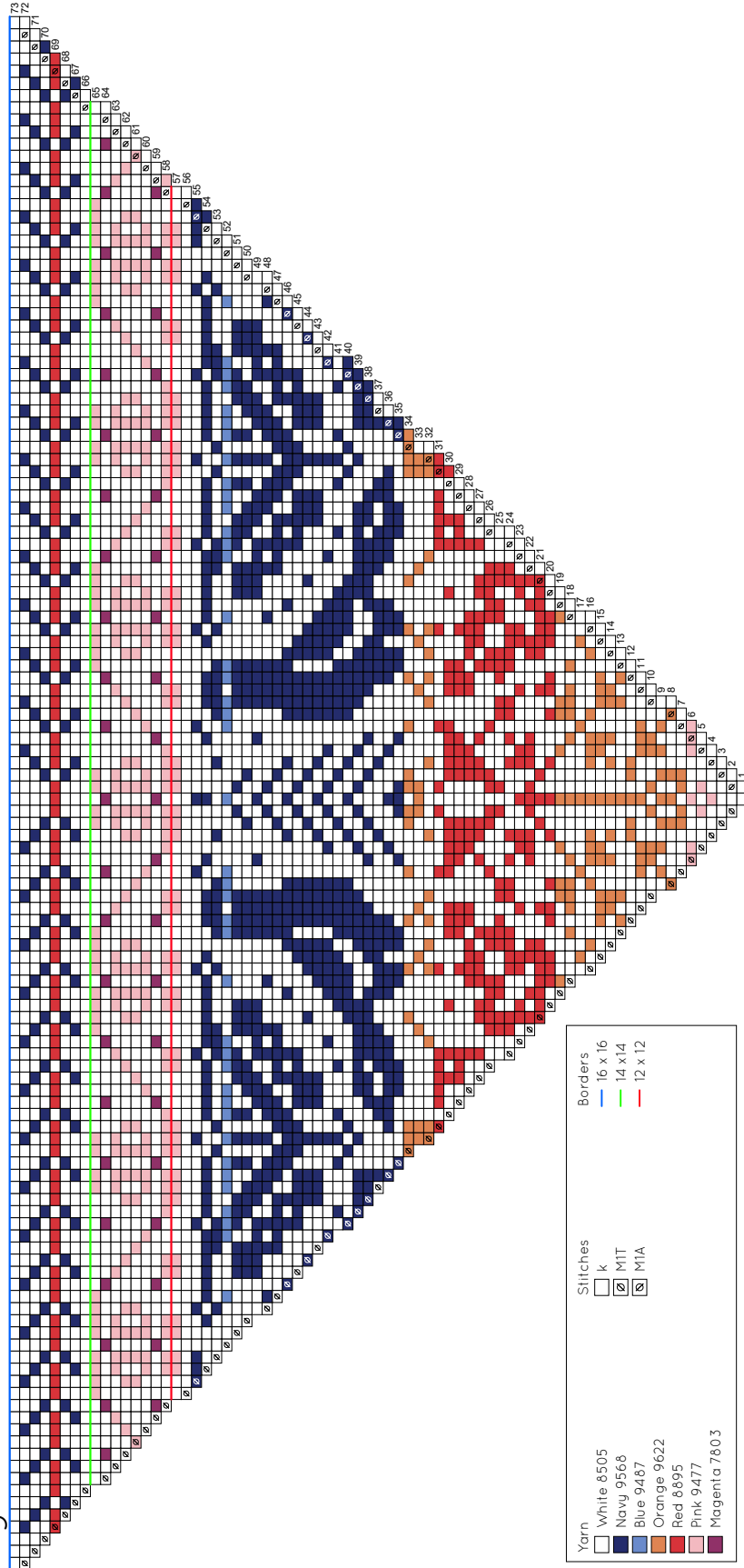
# Rooster Pillow



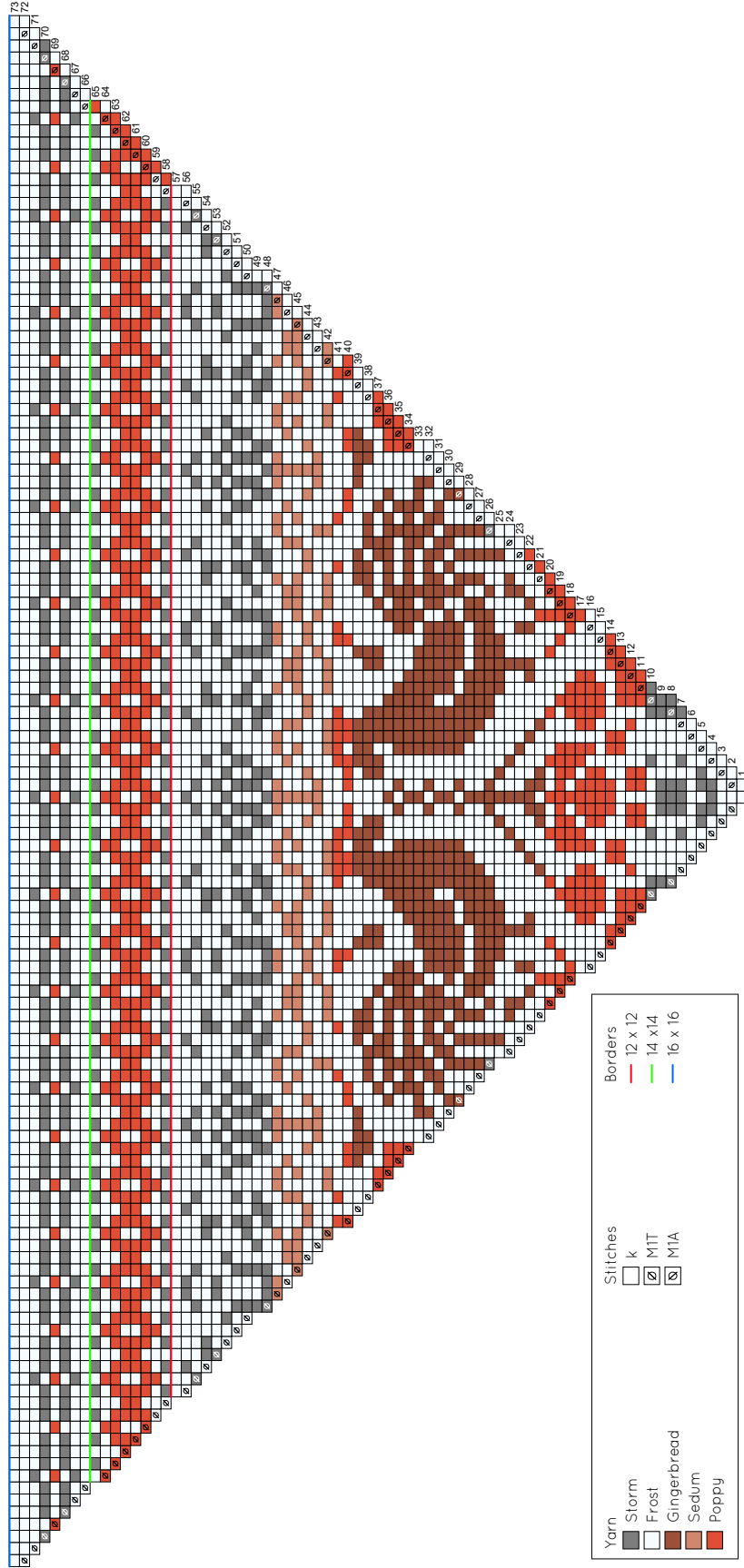
# Sparrow Pillow



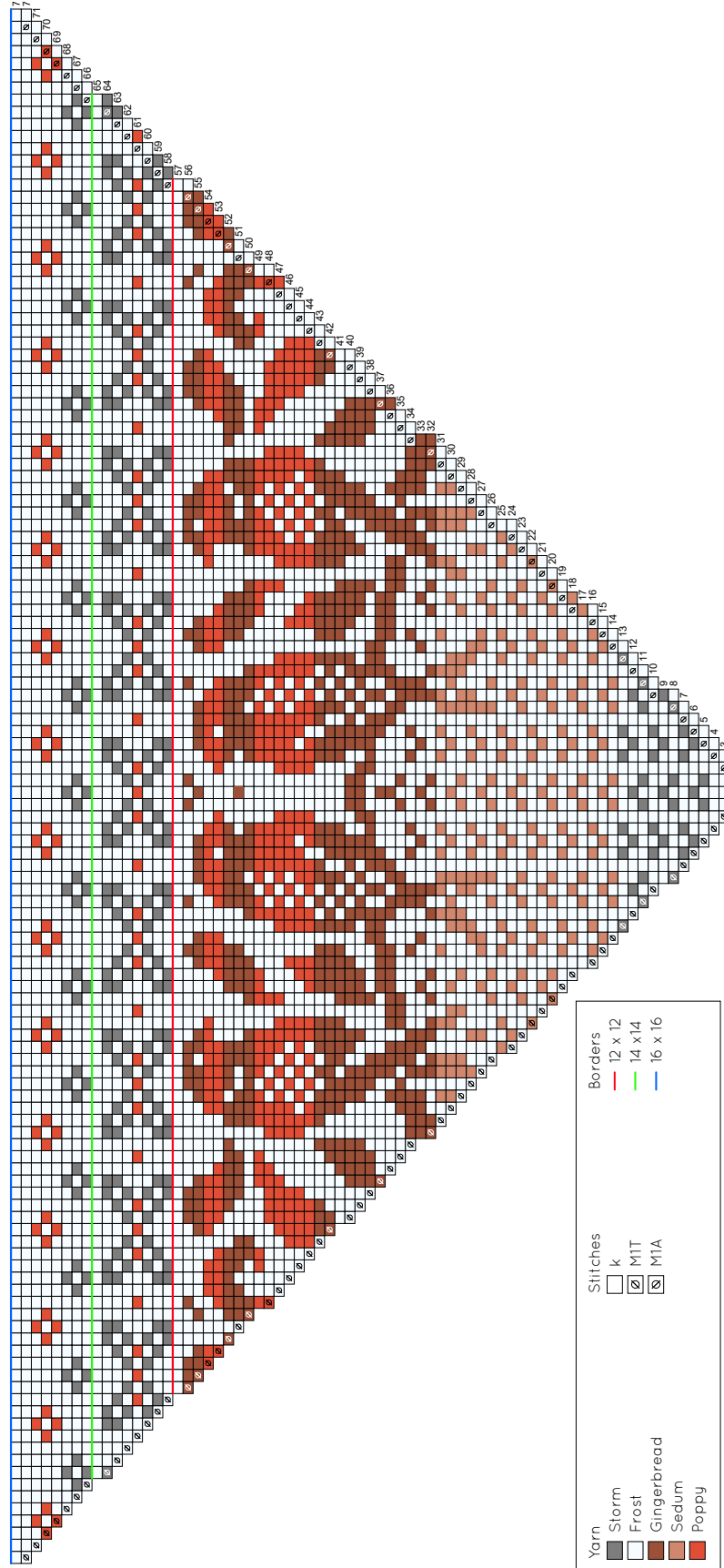
# Pigeon Pillow



# Rooster Pillow

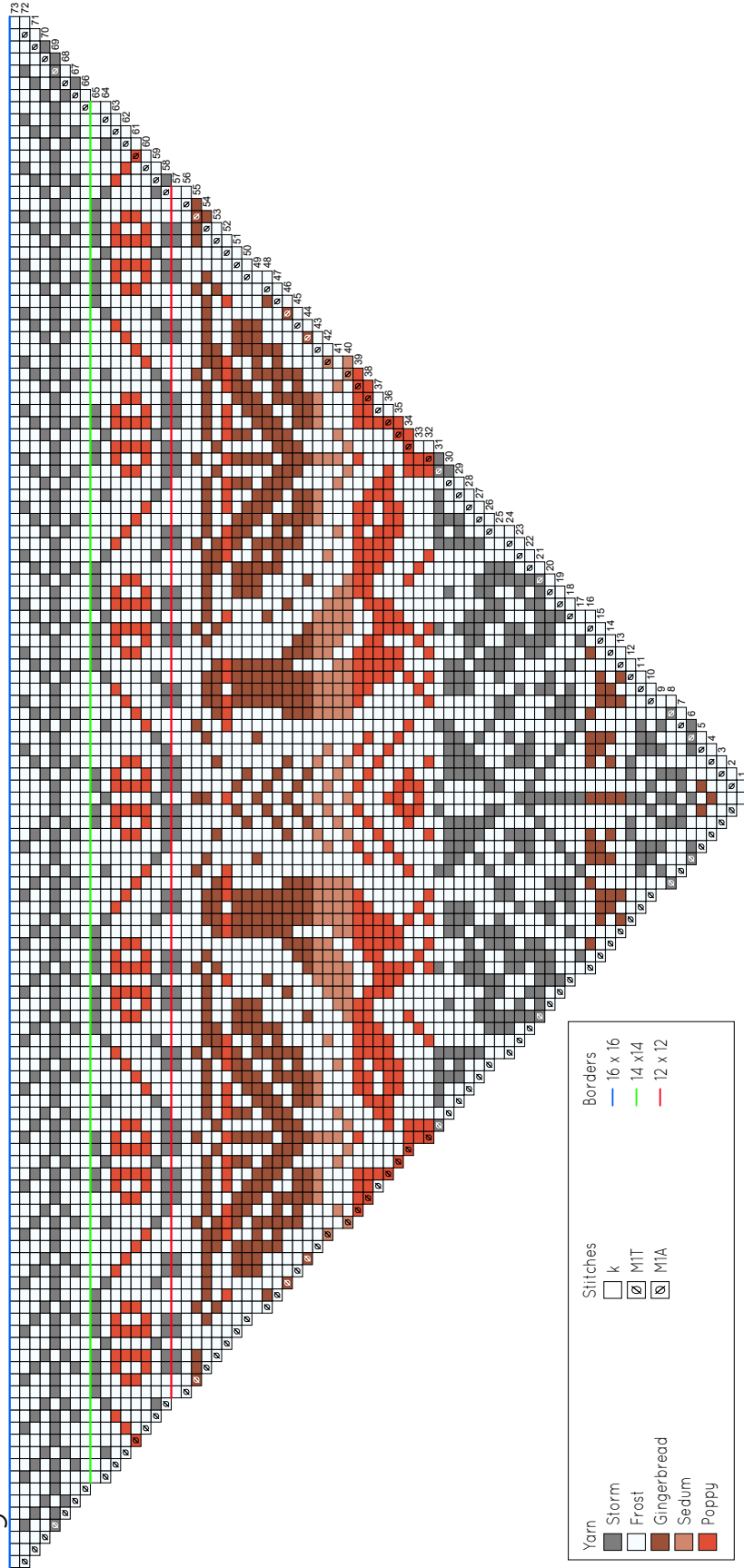


# Sparrow Pillow

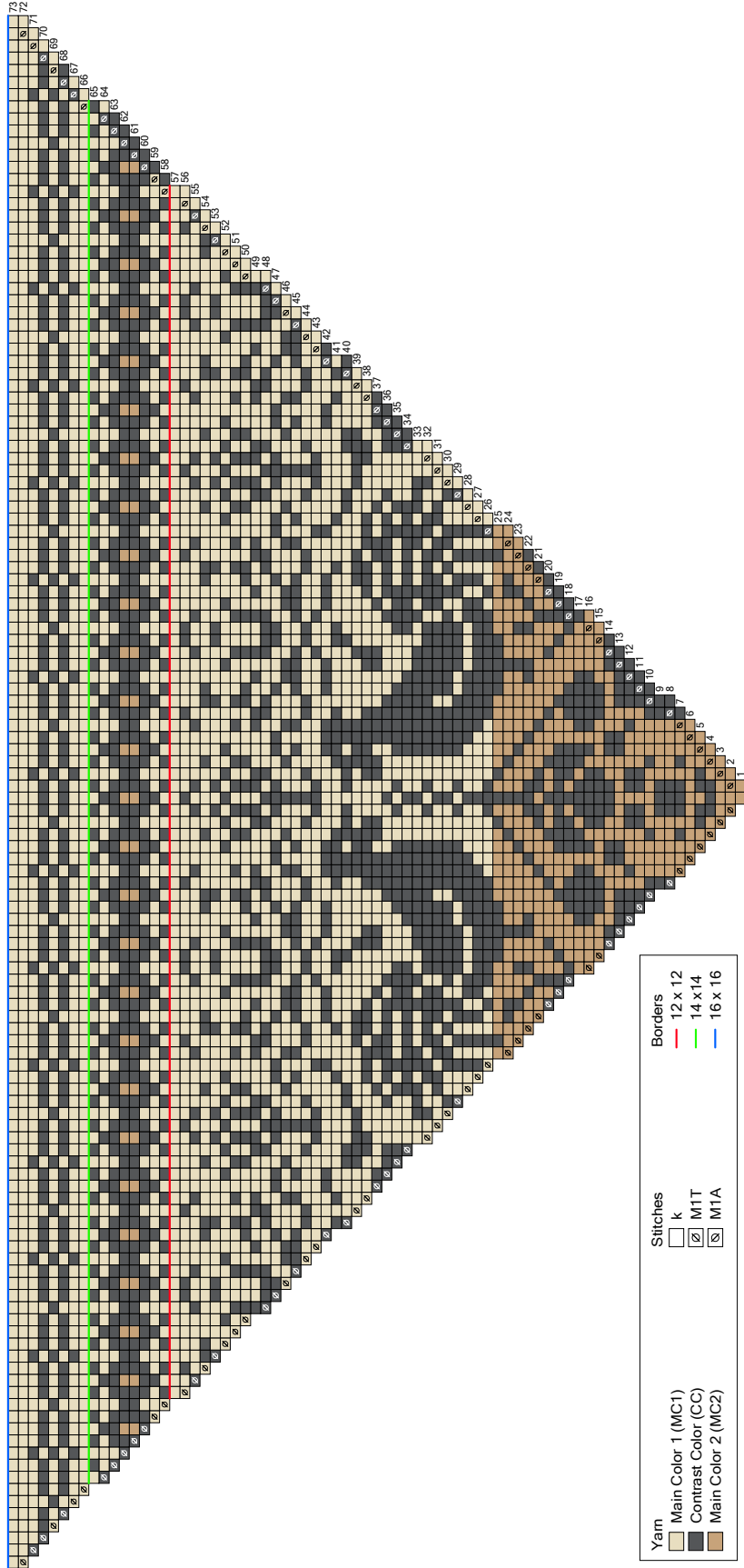




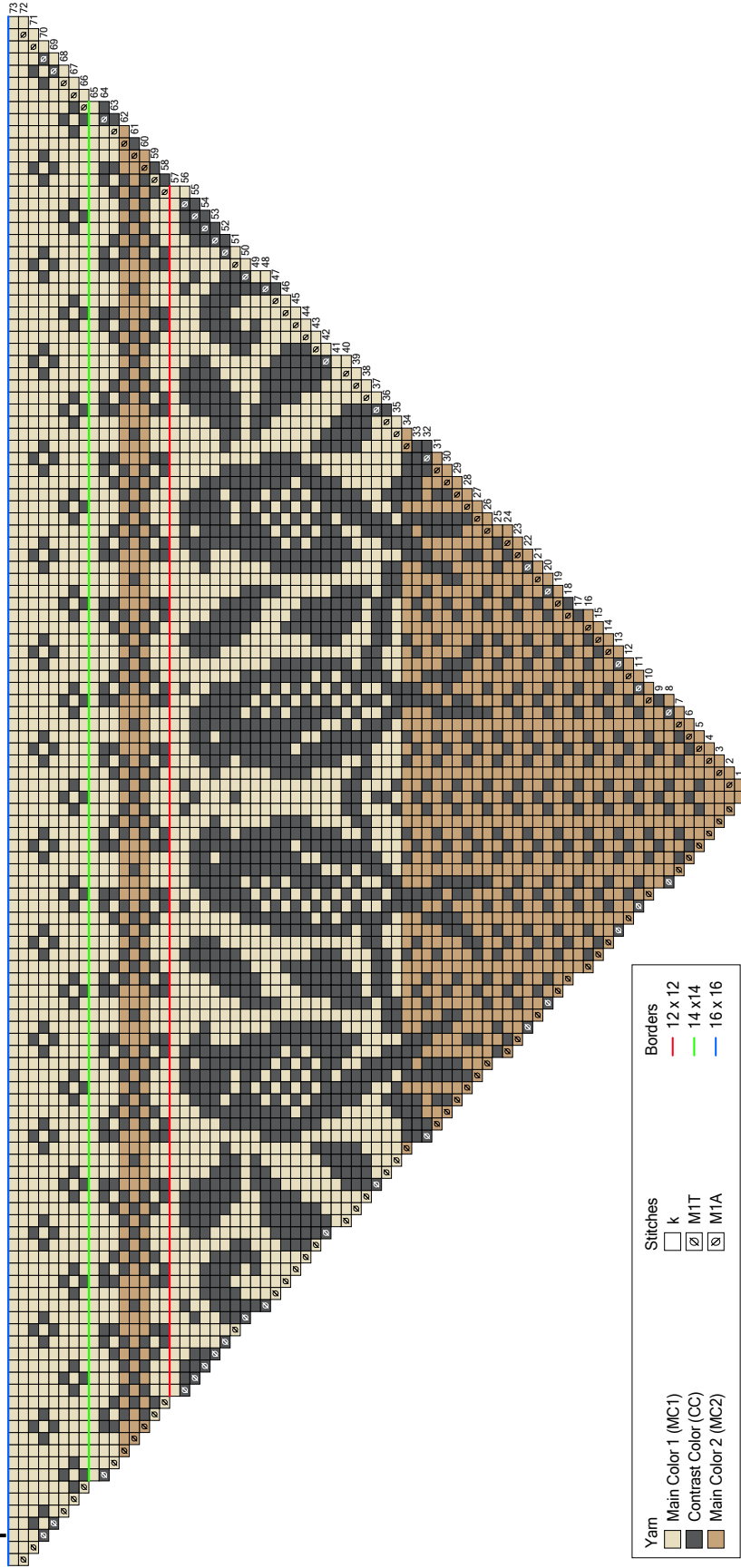
# Pigeon Pillow



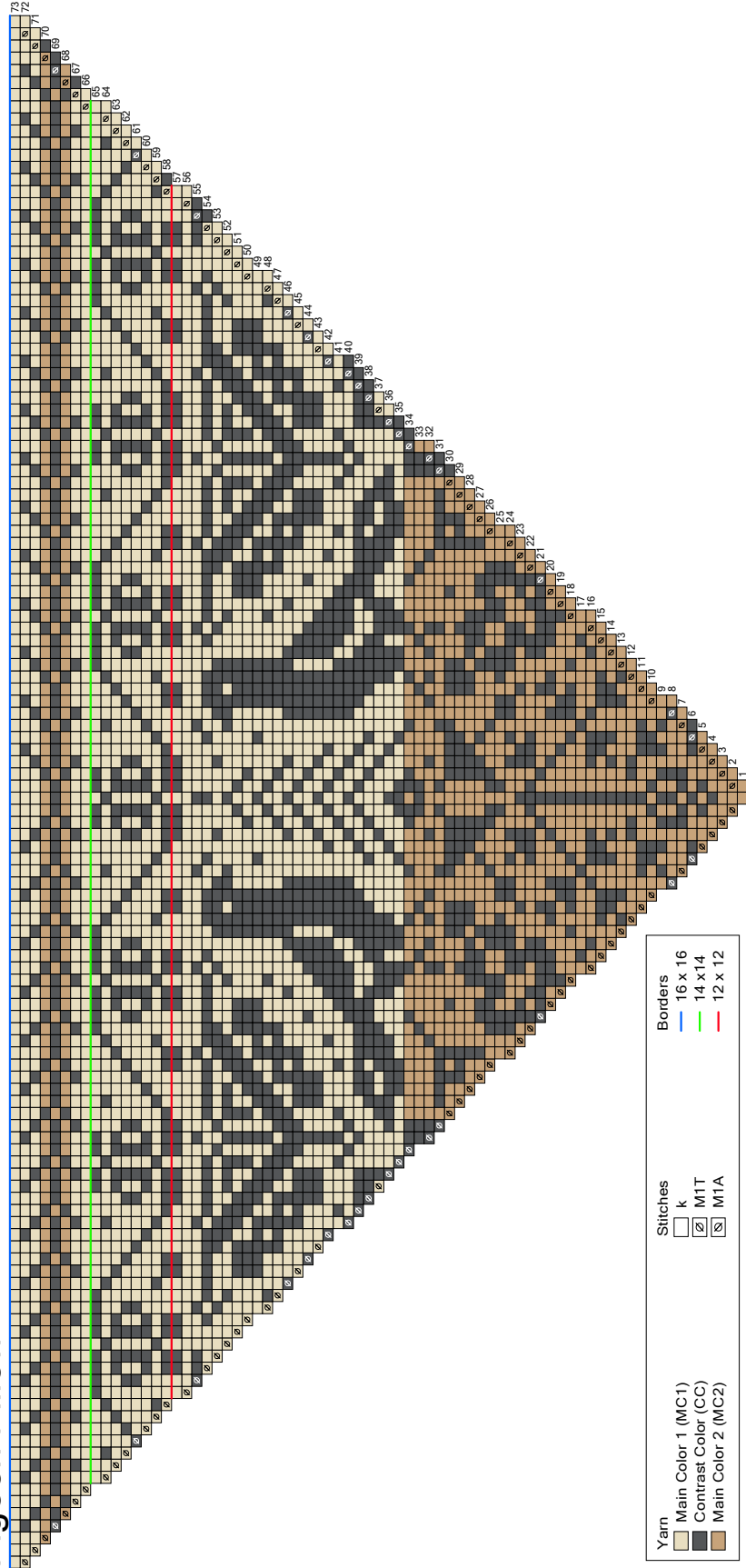
# Rooster Pillow



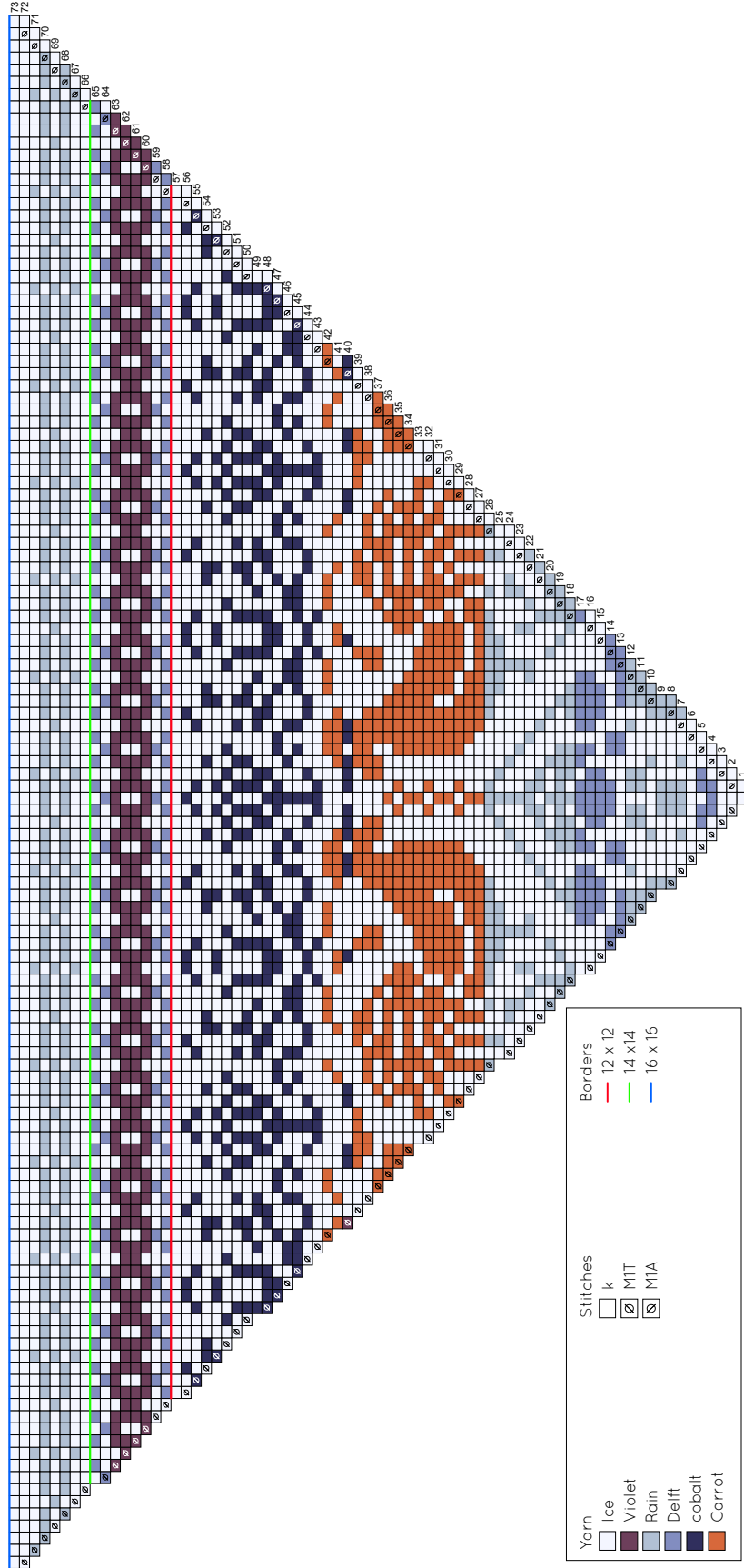
# Sparrow Pillow



# Pigeon Pillow

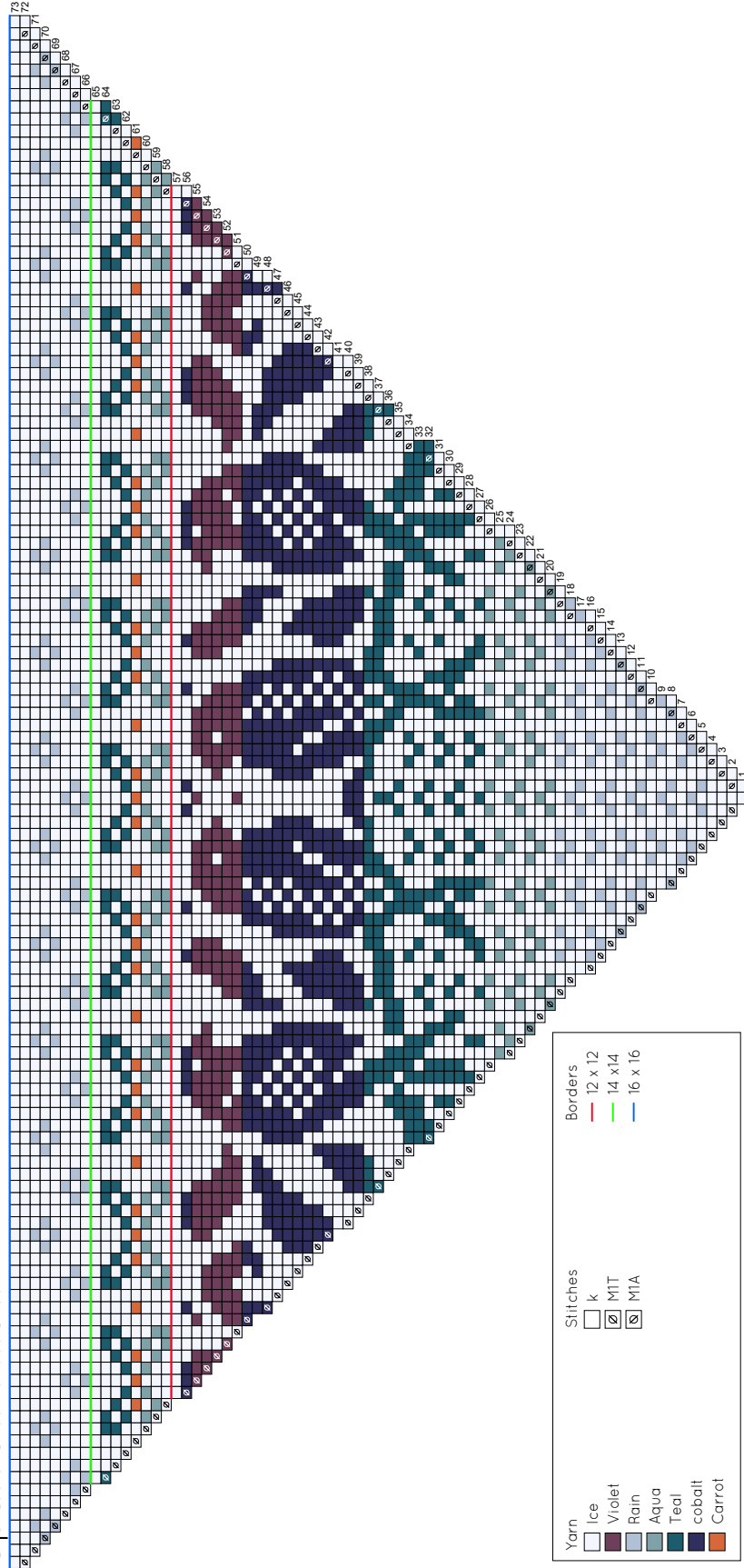


# Rooster Pillow

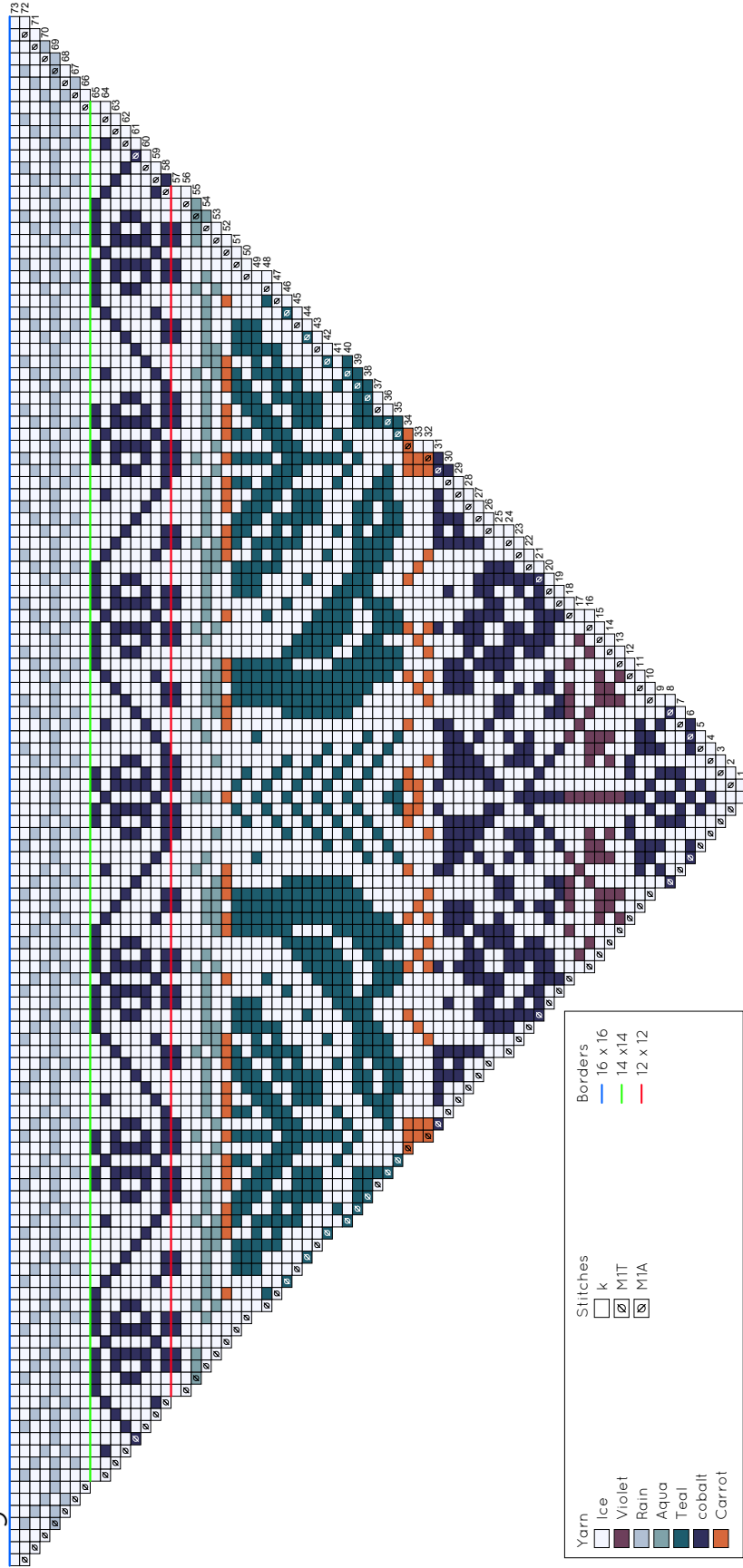




# Sparrow Pillow



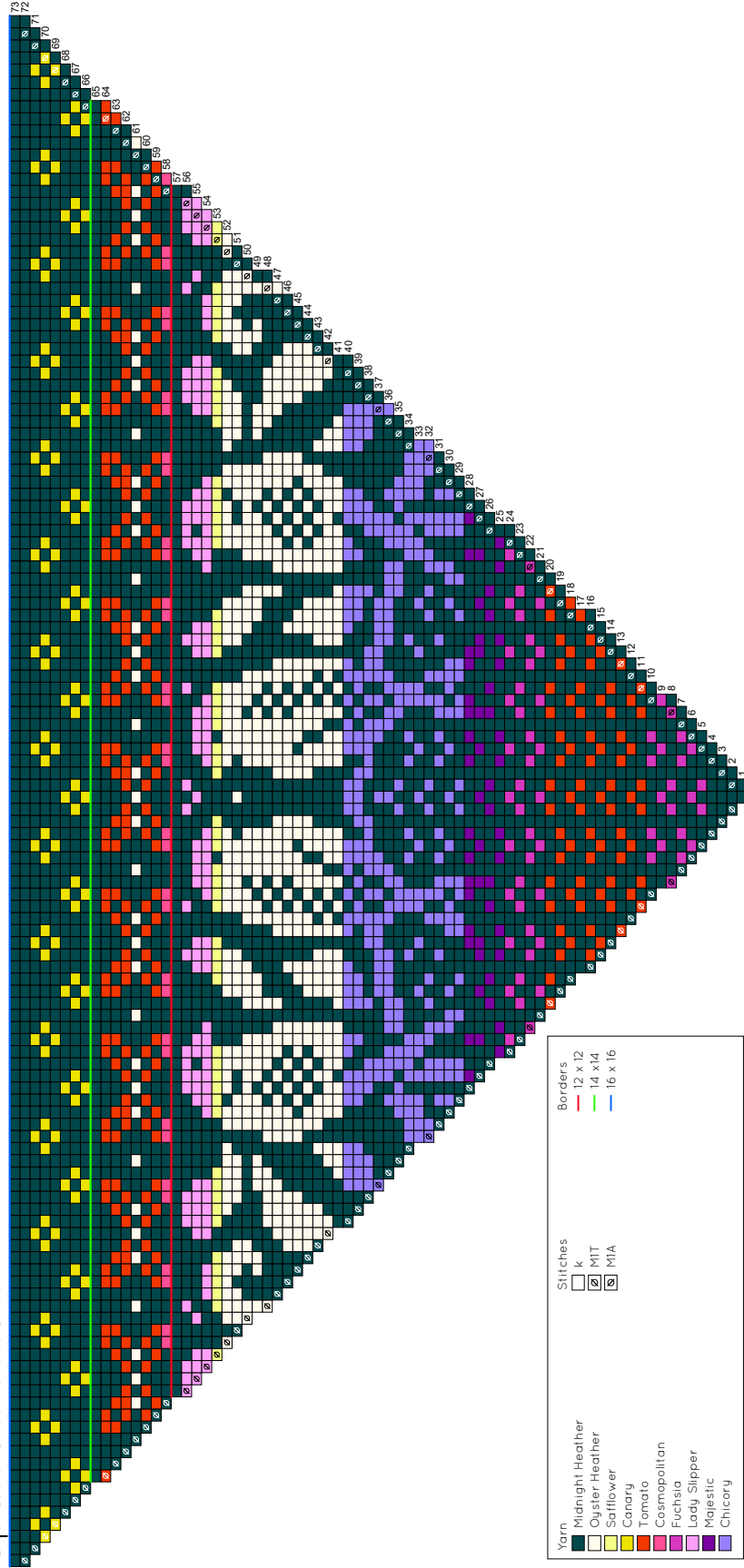
# Pigeon Pillow



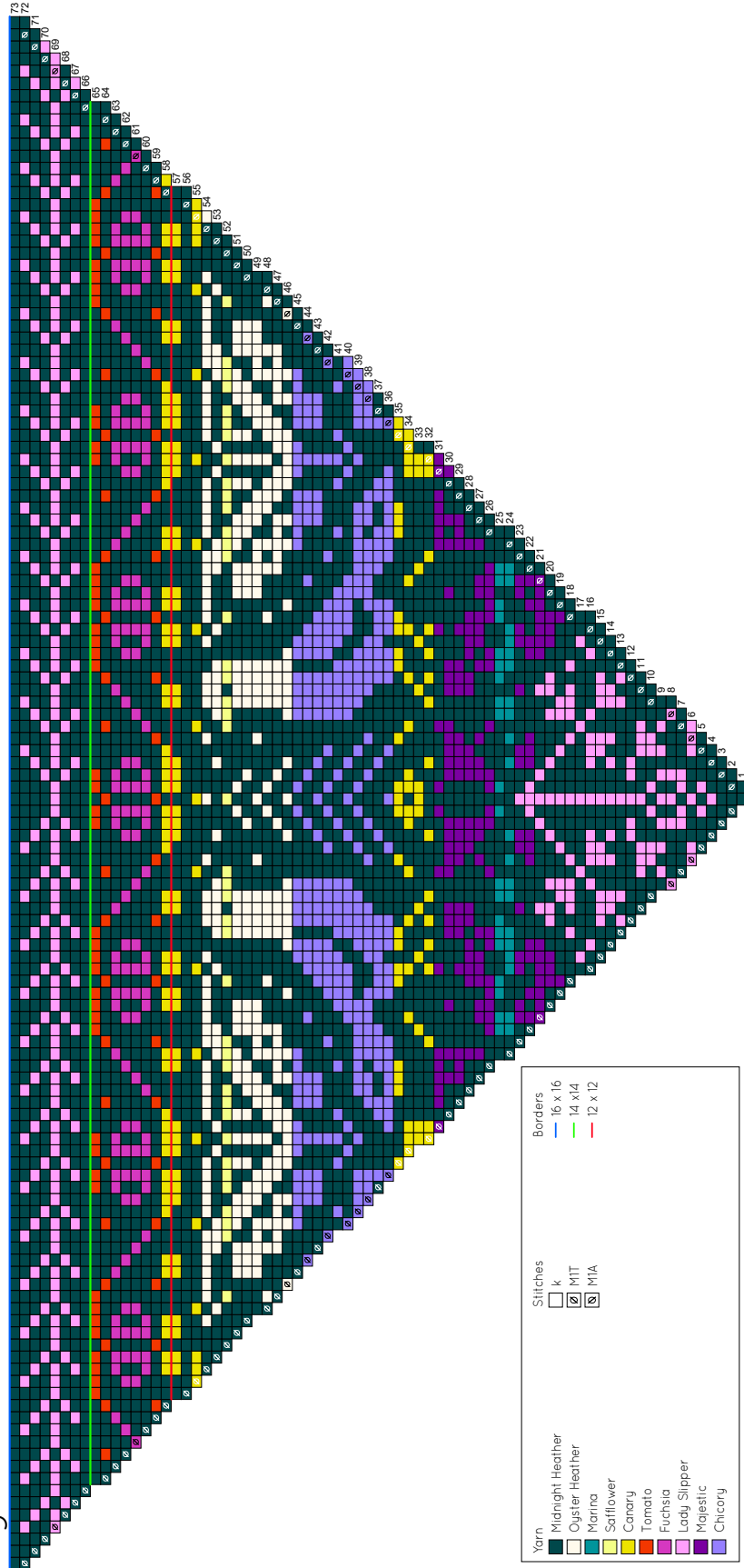
# Rooster Pillow



# Sparrow Pillow



# Pigeon Pillow



Yarn		Stitches		Borders	
Midnight Heather	16 x 16	k	16 x 16	16 x 16	16 x 16
Oyster Heather	14 x 14	MIT	14 x 14	14 x 14	14 x 14
Marina	12 x 12	MIA	12 x 12	12 x 12	12 x 12
Sailflower					
Canary					
Tomato					
Fuchsia					
Lady Slipper					
Maestic					
Chicory					