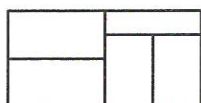




AUTUMN LEAVES STOLE

RECTANGULAR LACE WRAP

by Jared Flood



BROOKLYN TWEED

PATTERN

This rectangular lace stole is worked in two separate halves. The first half is cast on at the outer edge and worked in towards the center. After the first half is complete, stitches are put on a holder and the second half is worked in the same manner as the first. After both halves have been completed, the live stitches from both sides are grafted together invisibly using Kitchener Stitch (see schematic on previous page). This directional method is used so that lace motifs are vertically mirrored on both halves.

Using the Long-Tail Method, cast on 67 stitches.

NOTE It is important to use a relaxed, elastic cast-on when working lace pieces so that this edge does not give resistance during the blocking process.

ROW 1 (WS) Knit all stitches.

ROW 2 (RS) Knit all stitches.

Repeat the last two rows once more.

NEXT ROW (WS) Knit 3, purl until 3 stitches remain in row, knit 3.

NEXT ROW (RS) Knit all stitches.

NEXT ROW (WS) Knit 3, purl until 3 stitches remain in row, knit 3.

Work Rows 1-52 of Chart A one time.

NOTE The bracketed 10-stitch motif repeats itself 5 times on every row of Chart A.

Work Rows 1-36 of Chart B one time.

NOTE The bracketed 10-stitch motif repeats itself 5 times on every row of Chart B.

Work Rows 1-12 of Chart C seven times.

NOTE The bracketed 10-stitch motif repeats itself 5 times on every row of Chart C. If you would like to make your stole longer or shorter than the directed size, you may add or subtract instances of Chart C at this point to achieve desired length.

Work Rows 1-11 of Chart C once more.

Place all 67 stitches on a holder and set first half aside.

Repeat the steps above for the second half of stole.



FINISHING

After completion of both stole halves, graft the pieces together using Kitchener Stitch. **Make sure that RS and WS of both fabrics are matching before grafting.**

Using T-pins (and blocking wires, if desired), wet-block to specified dimensions.

Blocking wires were used to block the sample in the photographs -- you may notice crisp, straight edges on either side of the stole. This was achieved by threading blocking wires through the selvedge stitch to create a rectangular "frame" for blocking a perfectly straight edge.

Weave in all ends invisibly on the WS of fabric.

SYMBOL LEGEND



RS Knit
WS Purl



RS Purl
WS Knit



K2TOG Knit 2 Together (Right-Leaning Decrease)



SSK Slip 1 stitch from L to R needle as if to knit, replace this stitch on L needle in its new orientation and knit two together through the back loop (Left-Leaning Decrease)



YO Yarn Over



DOUBLE DECREASE Slip 1 stitch from L to R as if to knit, k2tog from L needle, pass slipped stitch over stitch just worked (2 stitches decreased)



AUTUMN LEAVES CHARTS

The following chart is worked back and forth. All odd-numbered rows fall on the RS of your fabric and are read from right to left, all even-numbered rows fall on the WS of your fabric and are read from left to right. The symbol legend is located on page 4.

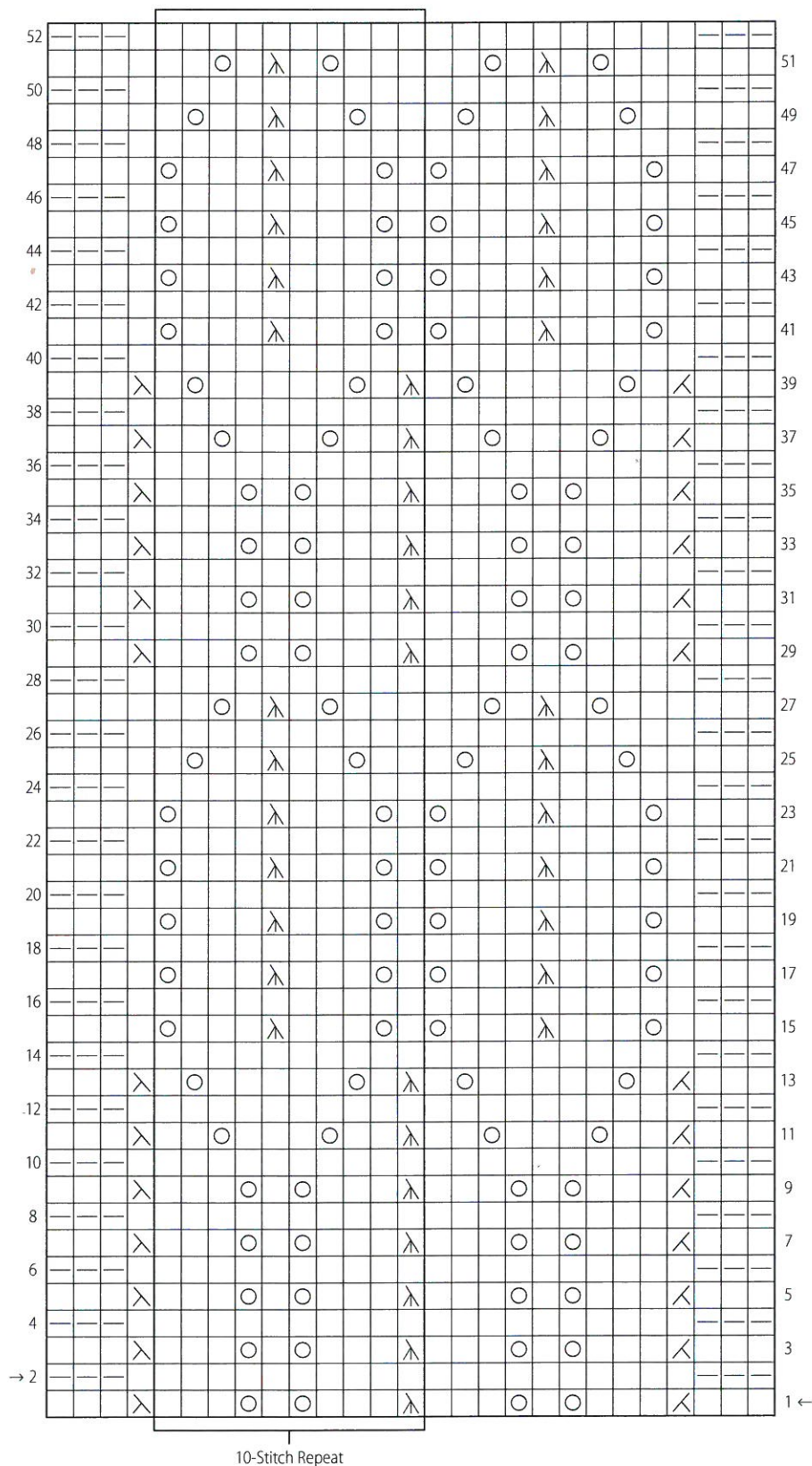
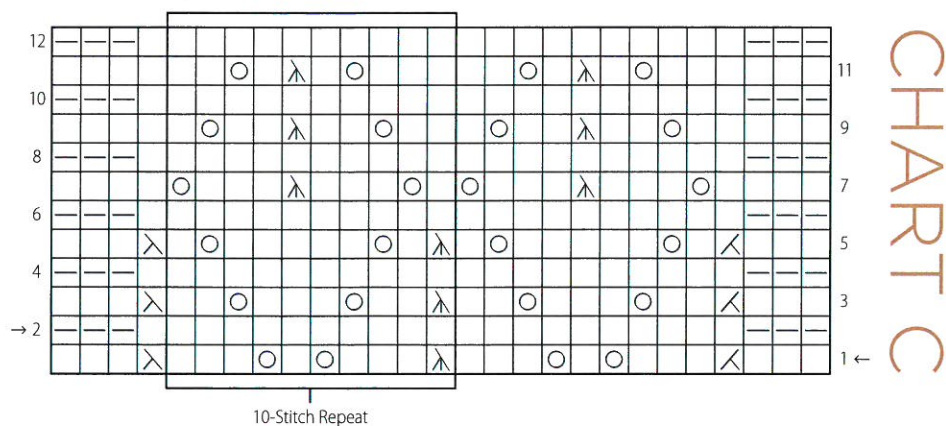
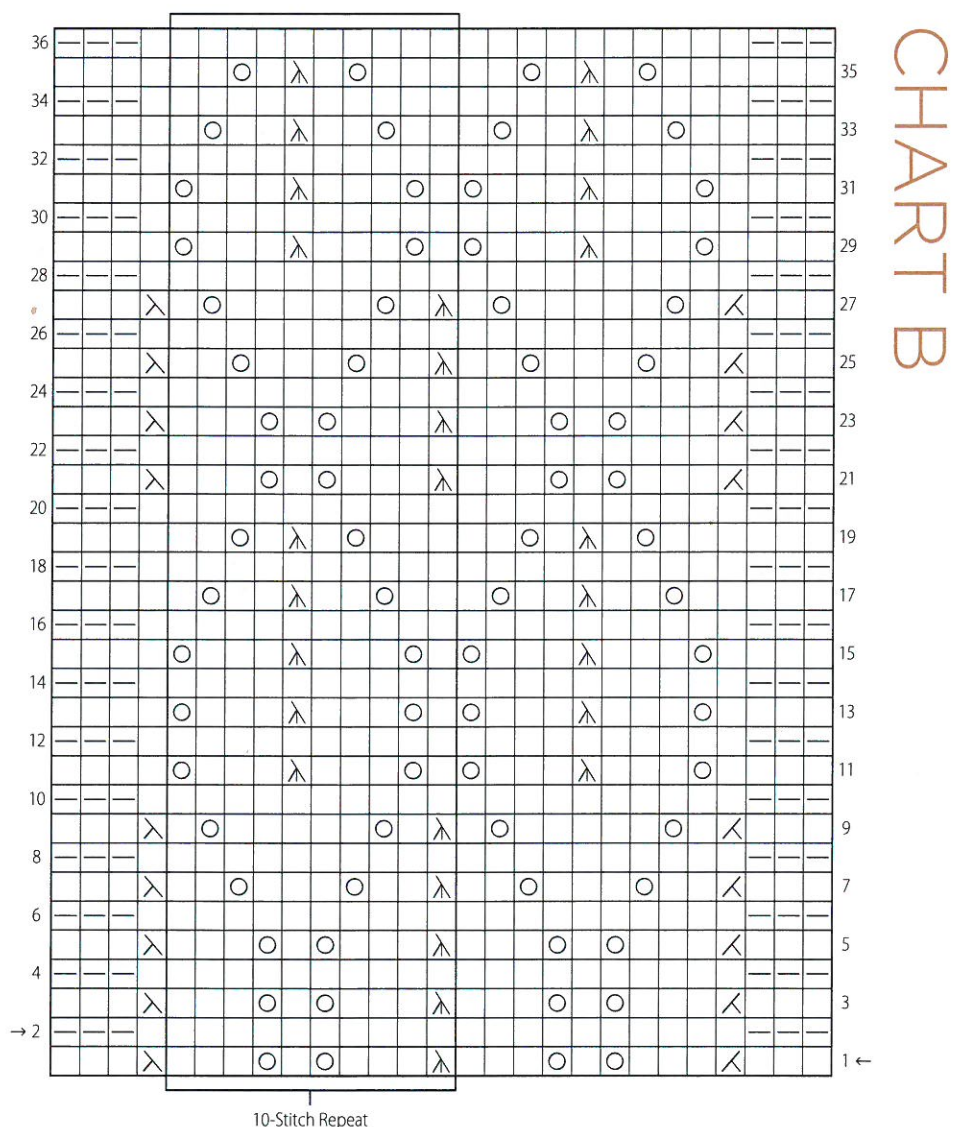


CHART A

AUTUMN LEAVES CHARTS

The following charts are worked back and forth. All odd-numbered rows fall on the RS of your fabric and are read from right to left, all even-numbered rows fall on the WS of your fabric and are read from left to right. The symbol legend is located on page 4.



BLUEPRINT

MATERIALS

Approximately 590 yards of worsted-weight wool yarn

Sample shown in **Brooklyn Tweed SHELTER** (100 % US Targhee-Columbia Wool; 140 yards/50g)
5 skeins in "Embers"

GAUGE

14 sts & 20 rows to 4 inches in Lace Pattern *after blocking*
17 sts & 26 rows to 4 inches in Stockinette Stitch

NEEDLES

One set of straight or circular needles in size needed to obtain gauge listed above

Suggested needle size: US 9 (5.5mm)

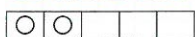
TOOLS

Blunt tapestry needle, several T-pins for blocking
Optional: blocking wires, additional stitch markers for indicating lace repeats

FINISHED DIMENSIONS

19" x 73" rectangle *after blocking*

SKILL LEVEL



SCHEMATIC

