

# ❁ ALPINE BLOOM ❁ hat



by Caitlin Hunter

BOYLAND  
KNITWORKS

# ALPINE BLOOM hat

The Alpine Bloom hat is designed as a companion to my Alpine Bloom tee pattern. I used sport weight yarn, but you can play with fingering and DK as well (taking gauge into account) to make this a great pattern to knit again and again. This fun colorwork hat pattern is written for both child and adult sizes.



## MATERIALS

### Suggested Yarn:

#### MC

Moondrake Soft Sport  
100% Superwash Merino wool  
328 yards [300 m] - 100 g

#### CC

Spincycle Dyed in the Wool  
100% American Wool  
200 yards [183 m] per skein

**Notions:** Stitch Marker, darning needle, scissors, balloon or bowl for blocking

## GAUGE

24 sts and 30 rounds over 4" [10 cm] in colorwork pattern on main needle, after blocking.

*Note- You should always knit your swatch the same way that the pattern is knit—in this case, in the round. Block your swatch as you will your finished garment and allow it to dry fully before measuring.*

## Needles

**Main:** US 5 [3.75 mm] - 16" [40 cm] circular needle and preferred needles for small circumference knitting.

**Ribbing:** US 3 [3.25 mm] - 16" [40 cm] circular needle

## Sizes:

1, 2, 3: To fit child, adult S/M, adult L/XL

**Circumference:** 16.75, 20, 23.5" [42.5, 49.5, 57 cm]

**Height:** 9" [23 cm]

**Yardage:** Please note that yardage is estimated, and can vary between knitters and yarn used.

**MC:** 110, 120, 130 yards [100.5, 110, 119 m]

**CC:** 80, 90, 100 yards [73.5, 82.5, 91.5 m]



# ALPINE BLOOM hat

## DIRECTIONS

With the ribbing needles and MC, CO 100, 120, 140 sts using your preferred cast-on method. Sample uses Long Tail Cast-On. Join in the round and place marker to indicate BOR, taking care not to twist sts.

## Ribbing

Round 1: \*K1, p1; repeat from \* to BOR.

Repeat Round 1 until work measures 1.5" [4 cm] from cast on edge. You can work more rounds of ribbing here if you want a foldable brim. I suggest 4" [10 cm] of ribbing for a foldable brim. Please note that adding length will impact your yardage requirements.

*Switch to main gauge needles.*

K 1 round.

## Chart

Begin working the chart for as shown on page 3, changing colors and making decreases as shown. Change to preferred needles for small circumference knitting when necessary.

10 (12, 14) sts

## Finishing

Thread tapestry needle with yarn tail, and thread through remaining sts twice, pulling tight to close crown of hat.

Weave in ends. Steam or wet-block hat to finished measurements. Trim ends once dry.

I like to soak my hats in cool water and wool wash, gently squeeze dry, and then allow to dry on a balloon that's been inflated to approximately the circumference of the wearer's head.

## ABBREVIATIONS

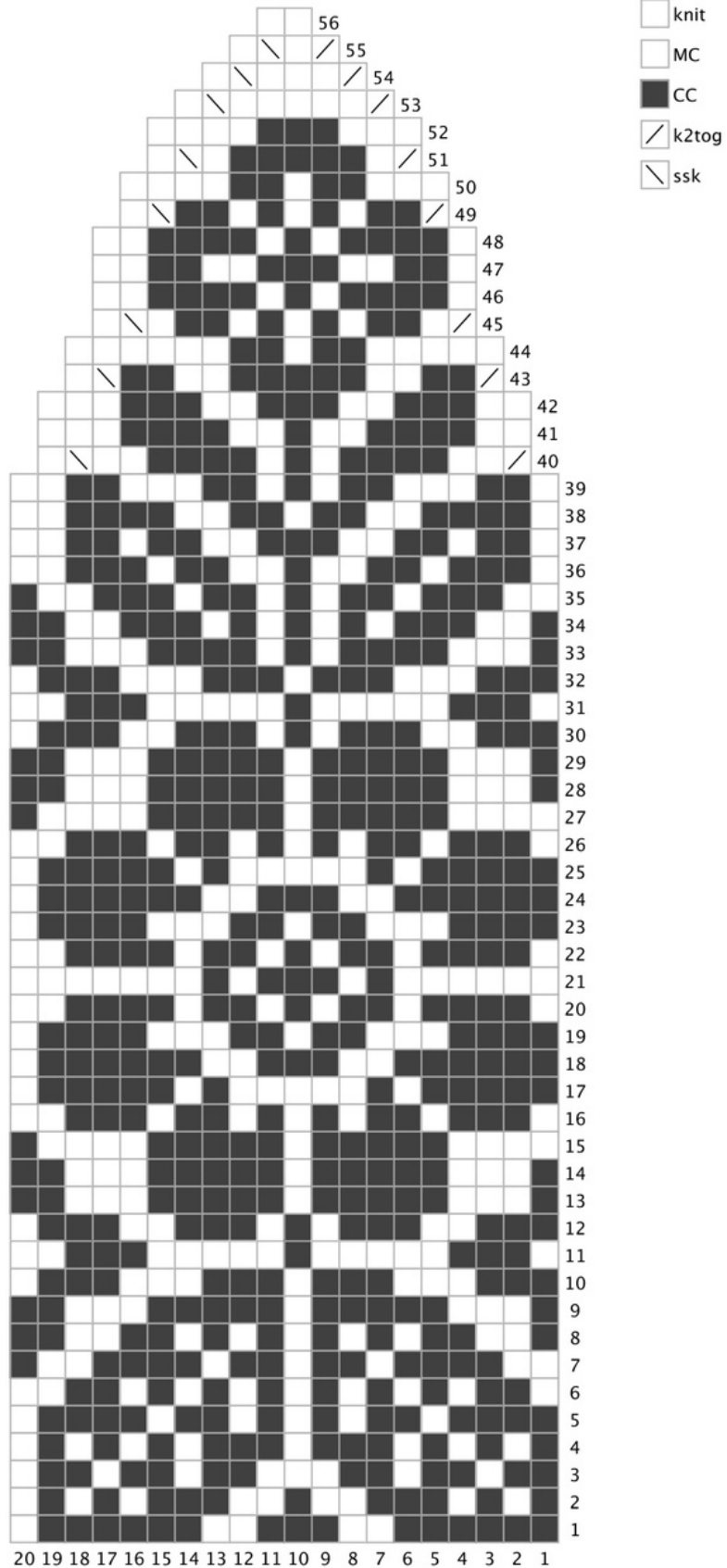
|       |                    |
|-------|--------------------|
| BOR   | beginning of round |
| CC    | Contrast Color     |
| CO    | Cast on            |
| K     | knit               |
| k2tog | knit 2 together    |
| MC    | Main Color         |
| P     | purl               |
| ssk   | slip, slip, knit   |
| st(s) | stitch(es)         |

# ALPINE BLOOM

## hat

chart

key



# ❁ ALPINE BLOOM ❁ hat



For pattern support, please visit my Ravelry Group,  
Boyland Knitworks. You can contact the designer at  
[boylandknitworks@gmail.com](mailto:boylandknitworks@gmail.com).

Find more designs by Caitlin Hunter at  
[www.boylandknitworks.com](http://www.boylandknitworks.com)

On Ravelry as: [boylandknitworks](#)

Follow me on Instagram: [boylandknitworks](#)  
Share your finished objects and see others on social  
media with the tags [#boylandknitworks](#) and  
[#alpinebloomhat](#)

Thank you for supporting independent design!

