

LILLA BJÖRN CROCHET

a sea story

13 MODERN MOSAIC CROCHET PATTERNS





a sea story

13 MODERN MOSAIC CROCHET PATTERNS

Tatsiana Kupryianchyk
Brno, 2021

Copyright 2021
© Tatsiana Kupryianchyk
(Taťána Kuprijančík)
All rights reserved.

No part of this publication may be reproduced or transmitted by any means, electronic, photocopying or otherwise without prior written permission of the author. Translations and video tutorials are not allowed.

CONCEPT & STYLING

Tatsiana Kupryianchyk

GRAPHIC DESIGN

Stephanie Peat

TEXT EDITING

Suzanne Juby

TECHNICAL EDITING

Carol Ibbetson, Amy Curtin

PHOTOGRAPHY

Fredrik Svenningsson

PHOTO EDITING

Vitali Frozen

frozen-photo.com

MODELS

Lucie Szabová, Mattias Davidsson

TESTERS AND MAKERS

Loele van den Bergh-Theunissen,
Jenna Bowers, Ruth Bracey,
Sarah Fabbri, Elizabeth Garcia Kalka,
Pam Hibbert, Laura Jackson,
Lisa Marlow, Macarena Marskell,
Faye Pike, Claire Shipton,
Esther Schippers, Sandra Veneman,
Hilde Tindlund

IN COLLABORATION WITH

scheepjes.com

PATTERN SUPPORT

lillabjorncrochet@gmail.com

PUBLISHED BY

Andrej Kolenčič

LANGUAGE: English

Printed in Brno by helbich.cz

ISBN 978-80-11-00323-4





contents

Preface	5
---------------	---

ACCESSORIES

Seagrass Shawl	8
Blue Whale Cowl	12
Silence Scarf.....	16
Beach Ride Shawl.....	20

HOME DECOR

Day for Two Pillow.....	26
Evening Flames Pillow	30
Seaweed Chair Pad	34

BLANKETS

Northern Winds Blanket.....	38
Pier 3 Blanket	42
From Sea to Sea Blanket	46
Quiet Moments Blanket	50

GARMENTS

Breathe the Breeze Cardigan.....	56
Zigzag Top	60

TIPS & TECHNIQUES	64
-------------------------	----

PATTERNS	70
----------------	----

ACKNOWLEDGMENTS	104
-----------------------	-----

LILLA BJÖRN CROCHET



meet me where the sky touches the sea

It was here where I first learned to breathe. At Pier 4 on the beach at Malmö, Sweden.

We cycled to the beach at night to celebrate my birthday. It was dark and windy, and the air was damp. That night I met with my own sea. One on one. And fell in love with it forever.

The book you are holding in your hands is a personal project. After several uncertain years in my life, the idea of embarking on a career as a crochet designer suddenly appeared on the horizon. And it happened here in Malmö.

I've been crocheting and knitting ever since I can remember. And now, my passion has turned into something bigger. Something that brings inspiration and joy, not only to me but also to many people around the world who follow my work.

This book is about the sea and friendship. And because my connection to Malmö is so strong, it will come as no surprise that I decided to take the photographs for this book here, at the beach line in the Ribersborg quarter of the city.

Divided into several sections, the book features 13 modern designs for home decorations, accessories, blankets and garments. And hopefully, the mosaic stitch patterns presented here will inspire you to use them in other projects, too.

Enjoy.

Tatiana

lillabjorncrochet.com

LILLA BJÖRN CROCHET





ACCESSORIES

as free as the ocean

seagrass shawl

Give yourself a warm woolen hug with this contemporary-style shawl. Generously sized, with a slightly asymmetrical shape and a dramatic mosaic panel with crosses, this must-have accessory will add a modern accent to any outfit.

Pattern on page 85









blue whale cowl

This stylish and versatile accessory for him or her can be worn either as a long scarf or as a cowl. Use two different mosaics and contrasting colors with the same black background for a balanced look.

Pattern on page 74





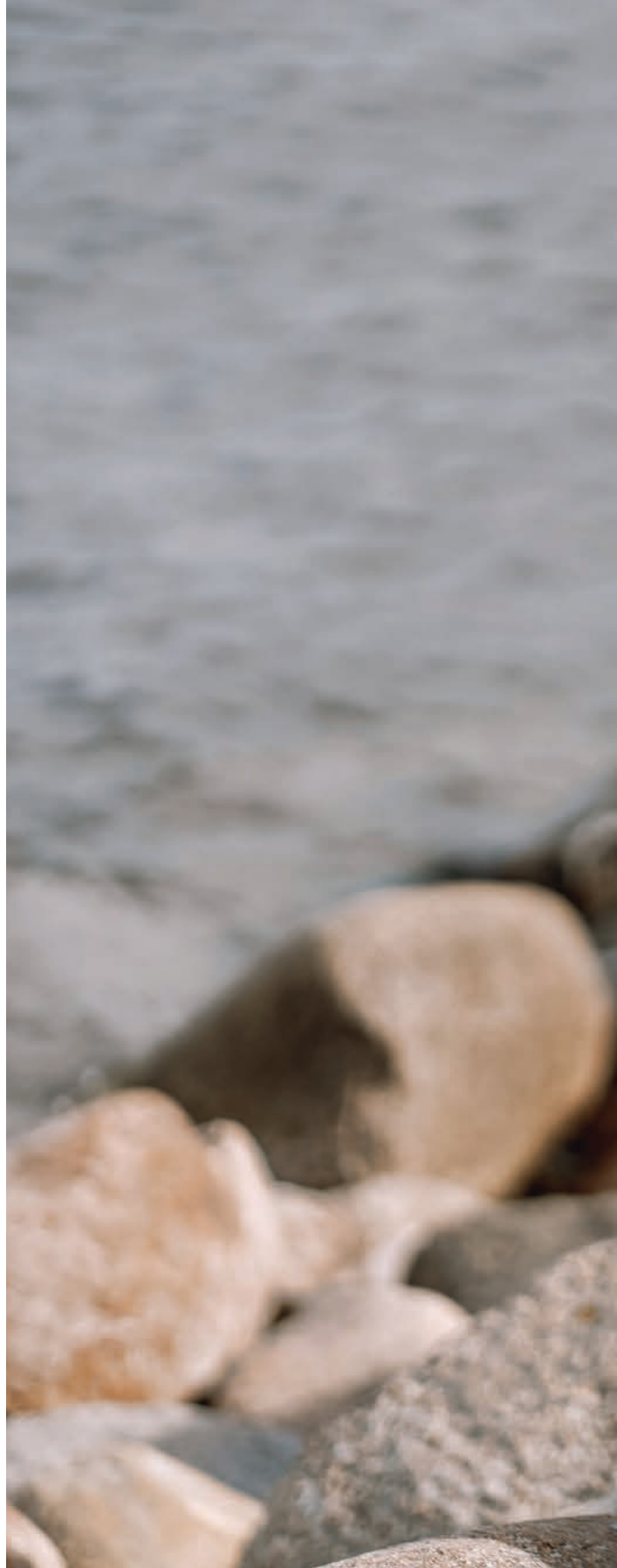




silence scarf

Light as a feather and soft as a morning cloud – you will love wearing this scarf. With a delicate mosaic stitch pattern, fresh colors, and an accent of gold, the design resembles traditional Fair Isle knitting.

Pattern on page 78









beach ride shawl

This asymmetrical shawl has an infinity mosaic pattern on one side, which can be mirrored on another side as well. Take fingering yarns with a long, soft gradient together with high-contrast background shades for a gorgeous illusion effect. Scheepjes Whirl and Whirlette yarns are the perfect choice for this project.

Pattern on page 83









HOME DECOR

the sea lives in every one of us



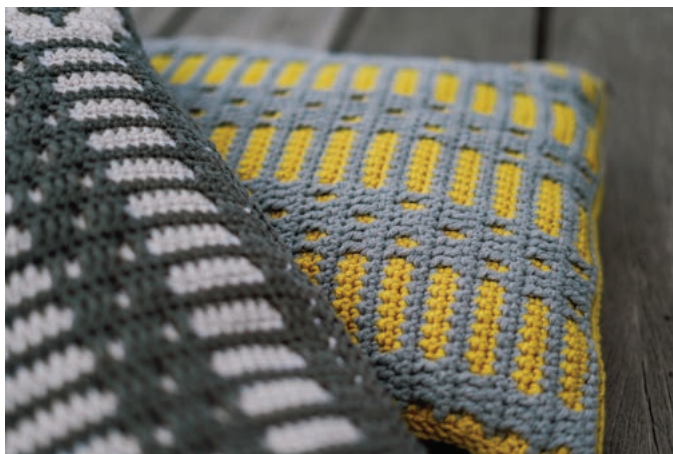
day for two pillow

What could be better than a day for two by the sea? Make your trip extra comfy with these large chunky pillows. Two matching stitch patterns will give you at least four options for each pillow's side. Play with colors and create your own unique accessory.

Pattern on page 72









evening flames pillow

Inspired by summer evenings as the sun sets and candles are lit, this modern pillow is designed with an earthy yellow background and bordered with shapes that mimic dancing flames. Swap the colors to create a twin pillow. Or pick different shades to match your interior.

Pattern on page 80



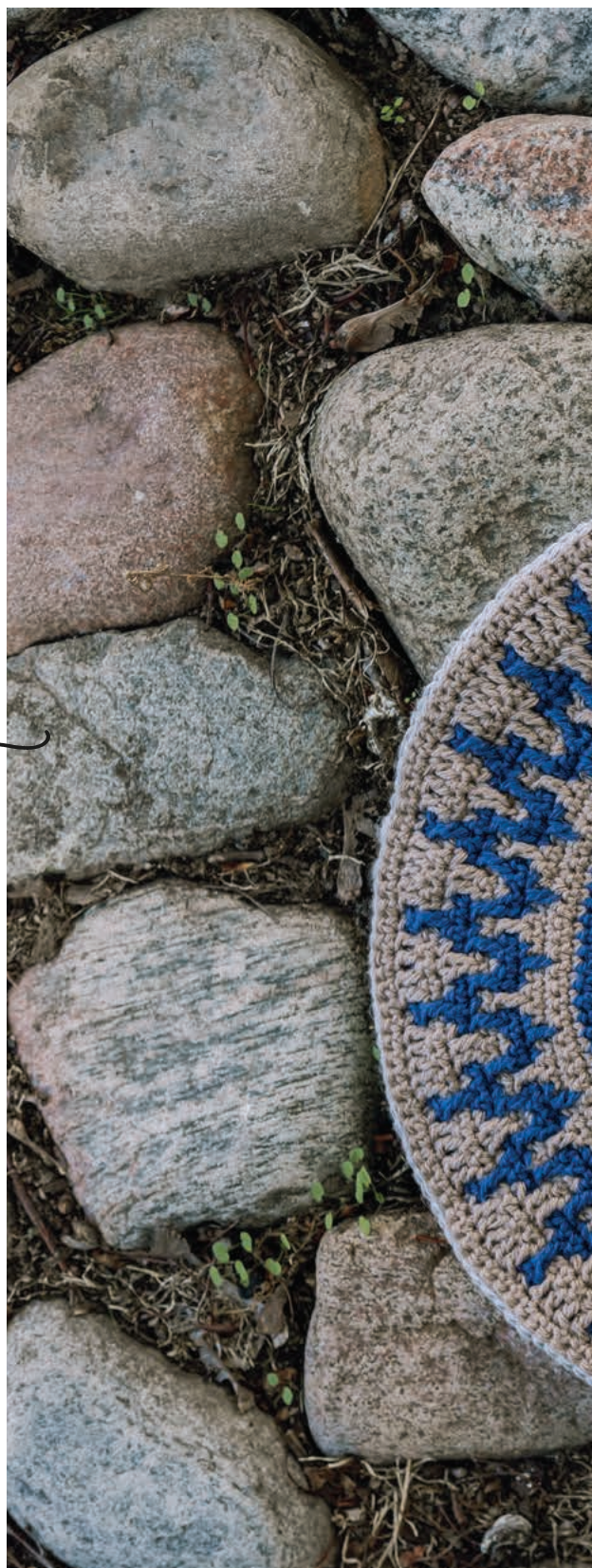




seaweed chair pad

This chair pad was inspired by the fanciful shapes of marine plants. Double layered and worked with natural jute yarn, it will offer comfy seating whether you are at the beach or in your dining room. Swap the colors and make a matching pair, or think creatively and crochet a colorful set.

Pattern on page 97









BLANKETS

we dream in colors borrowed from the sea

northern winds blanket

Imagine the wind in your hair and damp air against your skin, as you wrap up to keep warm in this cozy and stylish blanket. It is a classic example of a sample mosaic blanket, featuring two stitch patterns. The mosaic panels are easy to adjust for width and height, and can make a blanket in any size.

Pattern on page 92









LILLA BJÖRN CROCHET



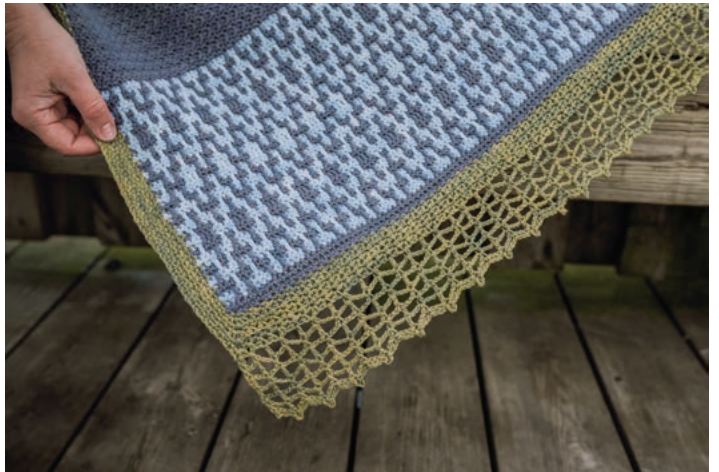


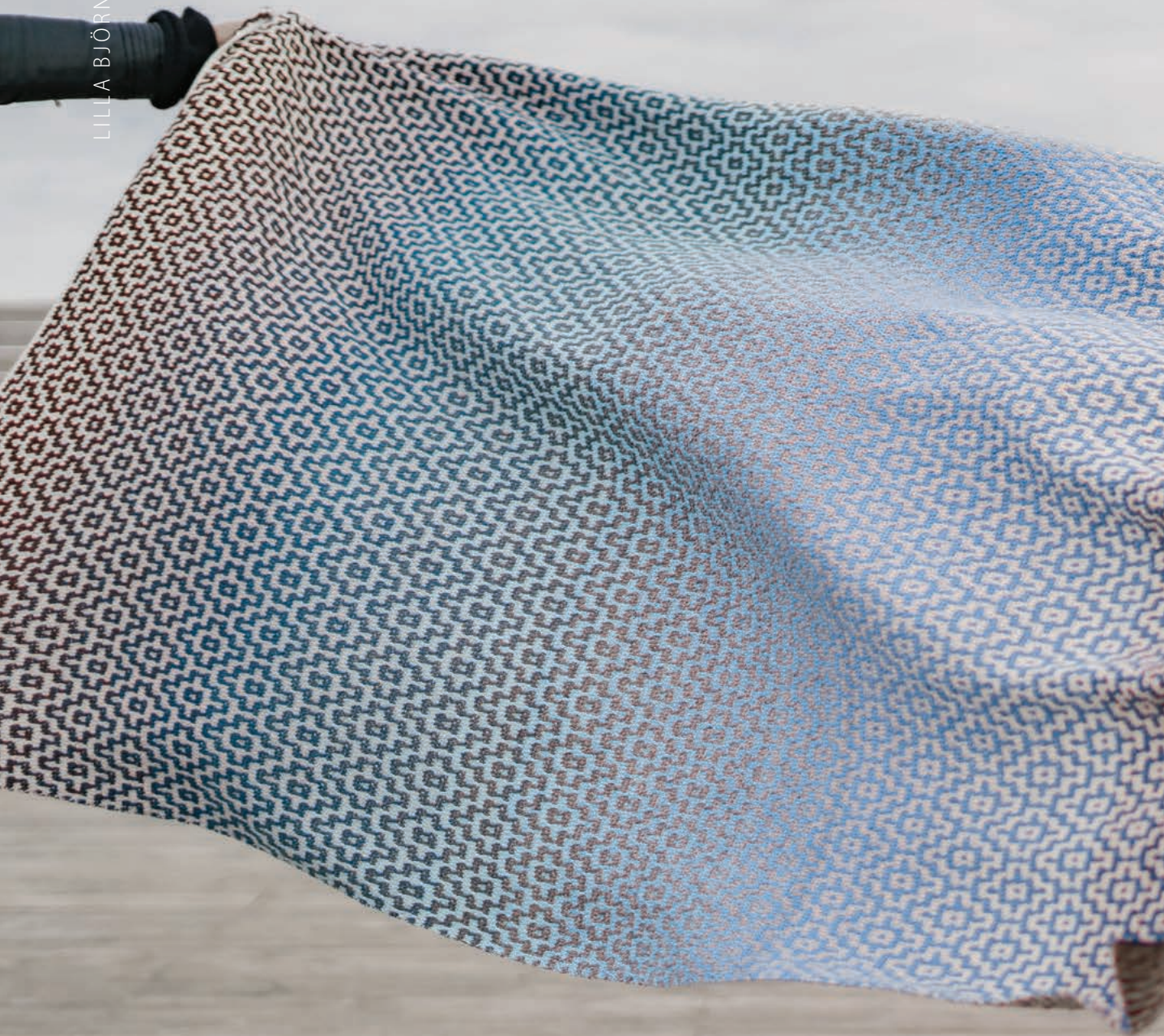
pier 3 blanket

Using Scheepjes Skies Light yarn in various shades of blue, this blanket has a gentle gradient of background colors. A wide panel of mosaics at the bottom edge, together with a delicate see-through lace border, add a timeless vintage vibe.

Pattern on page 75









from sea to sea blanket

Reminiscent of the constantly changing blue hues of the sea, this infinity blanket is worked with two colors of gradient yarn, creating an unbelievably beautiful ombré effect. A handmade masterpiece to be loved and treasured for years to come.

Pattern on page 102









quiet moments blanket

Find a secret place to spend some time alone.
Read your favourite book or listen to music.
Relax, meditate, and recharge your soul. And this
soft merino blanket with a delicate snowflake
design will provide good company.

Pattern on page 93





LILLA BJÖRN CROCHET



GARMENTS

happiness comes in waves



breathe the breeze cardigan

This eye-catching cropped cardigan, edged with a gorgeous mosaic design, is perfect for layering. Try it with a dress, skirt, or jeans, to make any outfit feel special. Made with natural bamboo-blend yarn, it is soft against the skin and breathable even on hot summer days.

Pattern on page 88









zigzag top

You will always be the center of attention in this top with an intricate yet elegant round yoke. A combination of strict geometric lines with a soft color fade makes this little clothing item fresh and attractive. You can also make this project with long sleeves, as it is worked seamlessly from the top down.

Pattern on page 98









tips and techniques

INTRODUCTION TO MOSAIC CROCHET

Mosaic crochet is a simple yet effective technique, which has been widely used in crochet design over the past few years. With only basic crochet stitches (chain, single crochet and so-called “mosaic double crochet” – see *Special Stitches* on page 69), it allows you to create textured fabrics with intricate stitch patterns.

This book uses an “inset” version of the mosaic crochet technique, which means that mosaic long stitches are incorporated into the background layer and don’t stand out much above the fabric’s surface.

Mosaic double crochet stitches are always worked on the right side in skipped stitches from three rows/rounds below, in front of the chains (and chains are

always skipped behind mosaic double crochet). And on the wrong side, only single crochet stitches are worked in all stitches of the previous row/round, and chains are worked over the chain spaces.

Two colors are used for mosaic stitch patterns: One color for every two rows/rounds. The color is changed in the last yarn over of the last stitch of the row (unless otherwise instructed). The yarn is not cut after every two rows/rounds, but is brought up along the edge (or corner) on the wrong side, up to the next row/round. Small floats of yarn appear on the wrong side of the fabric, and there are no tails to weave in. When the floats appear along the edge, they are later hidden by the border for a neat finishing touch.

Changing color



BLOCKING

Blocking is the process by which you dampen your crochet piece by wetting or steaming, then let it dry naturally. This gives the stitches extra definition and allows you to work out any minor flaws in the shape. Wet blocking is recommended over any other methods. If possible, use a color catcher to prevent the colors from running.

To block, immerse your project in water for a couple of minutes, then gently wring out most of the excess water. Place your work between two large clean towels and roll it up so the towels absorb most of the water. Unroll it and place your work on a clean

blocking surface that can hold pins (for example, a yoga mat or mattress). Applying gentle pressure, stretch your work out and use stainless-steel pins to attach it to your blocking surface.

Do not stretch the project too much, as it may ruin your stitches. Just gently adjust the shape, ensuring all parts are symmetrical. Because your gauge might differ, you don’t have to block to the exact measurements given in the pattern, except for garments where correct measurements are key to a perfect fit. When it is completely dry, unpin and enjoy your masterpiece. You can practice this blocking method on your gauge swatch.

CREATING A GAUGE SWATCH

Gauge (tension) is important to ensure the final measurements of your crochet project are correct. For some projects, like home decorations, it is not critical, but for garments it is essential to have the gauge under control, so your finished sweater or cardigan fits perfectly. For blankets and pillows, the gauge is also important, as the wrong tension may result in using more yarn.

The gauge is specified for each project in the book. Please note that your gauge swatch should be lightly blocked first, before measuring (see *Blocking* on page 65). Most of the gauges in this book are given for mosaic patterns.

To create a gauge swatch, make more chains than the actual width of the gauge and work several repeats in the mosaic pattern. You will also need to crochet more rows/rounds for your swatch than the actual height of the gauge. Ideally, your gauge swatch should be a few centimeters/inches bigger than the specified gauge, to increase the likelihood that your measurements are more accurate.

When the swatch is finished, blocked and dried, place a measuring tape across it horizontally and vertically to find out how many stitches and rows fit into 10cm/4in (for projects worked in the round, you will need to measure the gauge across the swatch, from side to side or from corner to corner, as stated in the pattern).

You should count every single crochet and mosaic double crochet stitch on the right side for the width. The gauge for height will be easier to measure on the wrong side: Every colorful stripe will count as two rows.



HOW TO ADJUST MOSAIC PATTERNS FOR A DIFFERENT WIDTH

All projects in this book have been designed with a specific yarn. If you take a closer look at the patterns, you will see they all list the number of stitches contained in one pattern repeat.

This section will help you to adjust the width of your project, as required. For instance, if you like the stitch

pattern used in the Day for Two Pillow (see page 72), but would prefer to make a blanket with it using finer yarn, then the easy steps opposite will help you calculate the exact number of chains you should begin with, to get a project with the same stitch pattern, but with a different yarn and in a different width.

STEP 1: Make a gauge swatch with mosaic pattern using your preferred yarn. All gauges in the book are given after blocking, so you should block your swatch first (see *Blocking* on page 65), then take measurements for width (number of stitches), either for 10cm or 4in.

STEP 2: Decide on the width of your project and calculate the rough number of stitches to begin with, using the simple formula below:

- **For centimeters:** New width gauge x new width of your project (cm) ÷ 10 = new number of stitches.
- **For inches:** New width gauge x new width of your project (inches) ÷ 4 = new number of stitches.

STEP 3: Find out how many repeats will fit into your new number of stitches. You will need to find numbers for a stitch pattern in the written instructions. For example, both stitch patterns for the Day for Two Pillow are multiples of 14 stitches plus 1 stitch. For your calculations, you need the first number (14 stitches), which indicates how many stitches are contained in the pattern repeat.

Use this formula: New number of stitches ÷ pattern repeat = number of repeats.

If your number of repeats is not a whole number (7.3, for example), feel free to round it up or down, either making it bigger or smaller. Obviously, less pattern repeats will result in a narrower project, and more pattern repeats will make it wider.

STEP 4: And now you only need to calculate the final number of stitches and foundation chains you need to begin with.

Use this formula: Number of repeats x pattern repeat + additional stitches (find them in the pattern repeat in the chosen project) + ch1 to begin = final number of chains to begin with.

EXAMPLE USING THE DAY FOR TWO PILLOW

For this example, imagine you want to use the mosaic stitch pattern with crosses from the Day for Two Pillow, but use fingering yarn instead of Aran, and make a blanket with a 100cm/40in width.

STEP 1: After making a swatch and blocking it, you work out that the new gauge with your chosen yarn and hook is now 22 stitches per 10cm/4in.

STEP 2: Now calculate the rough number of stitches for your blanket:

- **For centimeters:** $22 \times 100 \div 10 = 220$ stitches.
- **For inches:** $22 \times 40 \div 4 = 220$ stitches.

STEP 3: Find out how many repeats you will have with the new gauge. The instructions for the Day for Two Pillow state that the stitch pattern is a multiple of 14 stitches plus 1 stitch. For now, we only need number 14: $220 \text{ stitches} \div 14 \text{ stitches per 1 repeat} = 15.7$ repeats. Let's round them up to 16 repeats.

STEP 4: Calculate the final number of stitches for all repeats: $16 \text{ repeats} \times 14 \text{ stitches per 1 repeat} = 224$ stitches.

Then calculate the final number of chains to begin:

$224 \text{ stitches} + 1 \text{ stitch}$ (find this number in the stitch pattern in the written instructions; in this case the stitch pattern was 14 stitches + 1 stitch) + ch1 (we should always add one extra chain to begin the first row with single crochet) = 226 chains to begin.

RESULT: If your gauge is 22 stitches per 10cm/4in, you will need 226 chains to start a blanket with a 100cm/40in width.

HOW TO READ A MOSAIC CHART

The patterns in this book offer full row-by-row written instructions and charts. The chart is read from bottom to top. Each row in the chart represents one row/round. Odd rows are worked on the right side (1, 3, 5, etc.) and are read from right to left. Even rows on the wrong side (2, 4, 6, etc.) are read back across from left to right (unless otherwise instructed). The first square of each row in the chart shows which color is used for that row/round.

Each square of the chart shows 1 stitch or 1 skipped stitch. When squares of different colors appear in the row, they should be skipped. So instead of working them, make the same number of chains as the number of skipped stitches plus 1 chain (unless otherwise instructed). For 1 skipped stitch you will have 2 chains; for 2 skipped stitches, 3 chains, and so on.

Please note that in some projects the number of skipped stitches and chains is the same. And in others

the number of chains differs throughout the pattern. It is highly recommended that you first check the written instructions for the row/round and then refer to the chart.

On right-side rows, when you crochet with a different color, you will make mosaic double crochet in these skipped stitches from three rows/rounds below (see *Special Stitches* on page 69). Mosaic double crochet (marked with **X** in the chart) is only worked on right-side rows/rounds and always made in front of chains of previous rows/rounds, so the chain spaces behind them are always skipped.

On the wrong side (even-numbered rows/rounds), you will only make single crochet and chains. Please note that single crochet is made in all stitches of the previous row/round, and chains are made over chain spaces.

The red frame in the chart indicates the pattern repeat.



HOW TO MAKE A TASSEL

Cut a piece of cardboard to the length you want your tassel. Wrap the yarn around the cardboard until you get the required thickness. Insert about 30cm/12in thread between the cardboard and the yarn at the top of the tassel, pull it through and make a tight knot to hold the tassel together. When you have fixed the tassel, you can remove it from the cardboard. Wrap a little yarn several times around the tassel about 1cm/½in from the top to get a nice little head. Let the tassel hang from the thread at the top and cut the yarn loops in half at the end. Adjust the length of your tassel by trimming the ends of the yarn at the bottom, as required.

ABBREVIATIONS (US TERMS)

approx.	approximately	prev	previous
beg	beginning	rem	remaining
BL	back loop(s)	rep(s)	repeat(s)
blo	back loops only	rnd(s)	round(s)
CC	contrast color	RS	right side
ch	chain	sc	single crochet: insert hook in indicated st, yo, draw up a lp, yo and pull through 2 lps on hook
ch-sp(s)	chain space(s)	sc2tog	single crochet 2 together: [insert hook in indicated st, yo, draw up a lp] twice, yo and pull through 3 lps on hook
ch1-sp(s)	chain 1 space(s): number denotes number of chains in chain space	sc3tog	single crochet 3 together: [insert hook in indicated st, yo, draw up a lp] three times, yo and pull through 4 lps on hook
cont	continue	sk	skip
corr	corresponding	sp(s)	space(s)
dc	double crochet: yo, insert hook in indicated st, yo, draw up a lp, [yo, pull through 2 lps] twice	ss	slip stitch(es): insert hook in indicated st, yo, draw up a lp and pull second lp through the first lp on hook
folls	follows	st(s)	stitch(es)
hdc	half double crochet: yo, insert hook in indicated st, yo, draw up a lp, yo, pull through all 3 lps on hook	tog	together
inc	increase(s): 2 sts worked in the same st of prev row/rnd	WS	wrong side
lp(s)	loop(s)	yo	yarn over hook
m	marker	(...)	several sts worked in 1 st/sp
mdc	mosaic double crochet (see <i>Special Stitches</i> and pictures, below)		
patt	pattern		
pf	puff stitch (see <i>Special Stitches</i> , below)		
pm	place marker		

SPECIAL STITCHES

- pf** puff stitch: yo, insert hook in indicated st, yo, draw up a lp, [yo, insert hook in the same st, yo, draw up a lp] 3 times, yo, pull through 9 lps on hook
- mdc** mosaic double crochet: work dc in skipped/unworked st of same color 3 rows/rnds below in front of ch-sp; ch(s) will stay behind mdc and will be skipped

PATTERN REPEATS

- [...]** repeat instruction inside [...] as many times as indicated in the pattern
- *...;** repeat instruction after * as many times as indicated in the pattern



patterns





DAY FOR TWO PILLOW



MATERIALS

- ☀ *Scheepjes Chunky Monkey*
(100% premium acrylic; 100g/116m)
Yarn A: 1063 Steel (or 1823 Mustard)
x 4 balls
- CC:** 1820 Mist (or 1067 Rosewood)
x 2 balls and 1203 Pale Grey
(or 1099 Mid Grey) x 2 balls
- ☀ 5mm crochet hook
- ☀ Yarn needle to weave in ends
- ☀ Pillow form 40 x 60cm/16 x 24in

GAUGE

14 sts and 16 rows to measure
10 x 10cm/4 x 4in over mosaic pattern
using 5mm hook, blocked

MEASUREMENTS

Approx. 40 x 60cm/16 x 24in, blocked

PATTERN NOTES

Day for Two Pillow consists of two pieces (back and front). Both are worked with one or two of the following mosaic stitch patterns. There are four options for stitch pattern combinations offered in the pattern. Yarn A is used for both front and back. Use a different CC for each piece; two balls of CC will be needed for each piece. Feel free to swap Yarn A and CC according to your preference.

INSTRUCTIONS

Stitch patt is a multiple of 14 sts + 1 st

For all pattern options: To begin, ch58 with Yarn A, 1sc in second ch from hook, 1sc in each ch across (*change to CC*), turn – 57 sts.

Pattern option 1: Rep Stitch Pattern 1 two times; then rep Stitch Pattern 2 six times. Finish with Rows 1–4 of Stitch Pattern 2.

Pattern option 2: Rep Stitch Pattern 1 once; then rep Stitch Pattern 2 six times; then rep Rows 1–4 of Stitch Pattern 2 once; then rep Stitch Pattern 1 once more.

Pattern option 3: Rep Stitch Pattern 1 four times.

Pattern option 4: Rep Stitch Pattern 2 twelve times.

STITCH PATTERN 1 (CROSSES)

Row 1 (RS): With CC. Ch1 (*does not count as a st here and throughout*), 1sc, [ch3, sk 2 sts, 9sc, ch3, sk 2 sts, 1sc] rep across, turn.

Row 2 (WS): Ch1, 1sc, [ch3, sk sp, 9sc, ch3, sk sp, 1sc] rep across (*change to A*), turn.

Row 3: With A. Ch1, 1sc, [2mdc, ch5, sk 4 sts, 1sc, ch5, skip 4 sts, 2mdc, 1sc] rep across, turn.

Row 4: Ch1, 1sc, [2sc, ch5, sk sp, 1sc, ch5, sk sp, 3sc] rep across (*change to CC*), turn.

Row 5: With CC. Ch1, 3sc, 4mdc, ch2, sk 1 st, 4mdc, 2sc, [ch2, sk 1 st, 2sc, 4mdc, ch2, sk 1 st, 4mdc, 2sc] rep to last st, 1sc to end, turn.

Row 6: Ch1, 7sc, [ch2, sk sp, 6sc] rep to last st, 1sc to end (*change to A*), turn.

Row 7: With A. Ch1, 1sc, [ch5, sk 4 sts, 2sc, 1mdc, 2sc, ch5, sk 4 sts, 1mdc] rep across working 1sc instead of last mdc, turn.

Row 8: Ch1, 1sc, [ch5, sk sp, 5sc, ch5, sk sp, 1sc] rep across (*change to CC*), turn.

Row 9: With CC. Ch1, 1sc, 4mdc, ch2, sk 1 st, 3sc, ch2, sk 1 st, 4mdc, [ch2, sk 1 st, 4mdc, ch2, sk 1 st, 3sc, ch2, sk 1 st, 4mdc] rep to last st, 1sc to end, turn.

Row 10: Ch1, 5sc, ch2, sk sp, 3sc, ch2, sk sp, 4sc, [ch2, sk sp, 4sc, ch2, sk sp, 3sc, ch2, sk sp, 4sc] rep to last st, 1sc to end (*change to A*), turn.

Row 11: With A. Ch1, 1sc, [ch3, sk 2 sts, 2sc, 1mdc, ch4, sk 3 sts, 1mdc, 2sc, ch3, sk 2 sts, 1mdc] rep across working 1sc instead of last mdc, turn.

Row 12: Ch1, 1sc, [ch3, sk sp, 3sc, ch4, sk sp, 3sc, ch3, sk sp, 1sc] rep across (*change to CC*), turn.

Row 13: With CC. Ch1, 1sc, 2mdc, 2sc, ch2, sk 1 st, 3mdc, ch2, sk 1 st, 2sc, 2mdc, [ch2, sk 1 st, 2mdc, 2sc, ch2, sk 1 st,

3mdc, ch2, sk 1 st, 2sc, 2mdc] rep to last st, 1sc to end, turn.

Row 14: Rep Row 10.

Row 15: With A. Ch1, 1sc, [ch5, sk 4 sts, 1mdc, 3sc, 1mdc, ch5, sk 4 sts, 1mdc] rep across working 1sc instead of last mdc, turn.

Row 16: Rep Row 8.

Row 17: With CC. Ch1, 1sc, 4mdc, 2sc, ch2, sk 1 st, 2sc, 4mdc, [ch2, sk 1 st, 4mdc, 2sc, ch2, sk 1 st, 2sc, 4mdc] rep to last st, 1sc to end, turn.

Row 18: Rep Row 6.

Row 19: With A. Ch1, 1sc, [2sc, ch5, sk 4 sts, 1mdc, ch5, sk 4 sts, 2sc, 1mdc] rep across working 1sc instead of last mdc, turn.

Row 20: Rep Row 4.

Row 21: With CC. Ch1, 1sc, [ch3, sk 2 sts, 4mdc, 1sc, 4mdc, ch3, sk 2 sts, 1sc] rep across, turn.

Row 22: Rep Row 2.

Row 23: With A. Ch1, 1sc, [2mdc, 9sc, 2mdc, 1sc] rep across, turn.

Row 24: Ch1, 1sc in each st across (*change to CC*), turn.

STITCH PATTERN 2 (STRIPES)

Row 1 (RS): With CC. Ch1 (*does not count as a st here and throughout*), 1sc, ch4, sk 3 sts, 7sc, [ch2, sk 1 st, 1sc, ch4, sk 3 sts, 1sc, ch2, sk 1 st, 7sc] rep to last 4 sts, ch4, sk 3 sts, 1sc to end, turn.

Row 2 (WS): Ch1, 1sc, ch4, sk sp, 7sc, [ch2, sk sp, 1sc, ch4, sk sp, 1sc, ch2, sk sp, 7sc] rep to last sp and sc, ch4, sk sp, 1sc to end (*change to A*), turn.

Row 3: With A. Ch1, 1sc, 3mdc, 7sc, [1mdc, 1sc, 3mdc, 1sc, 1mdc, 7sc] rep to last sp and sc, 3mdc, 1sc to end, turn.

Row 4: Ch1, 1sc in each st across (*change to CC*), turn.

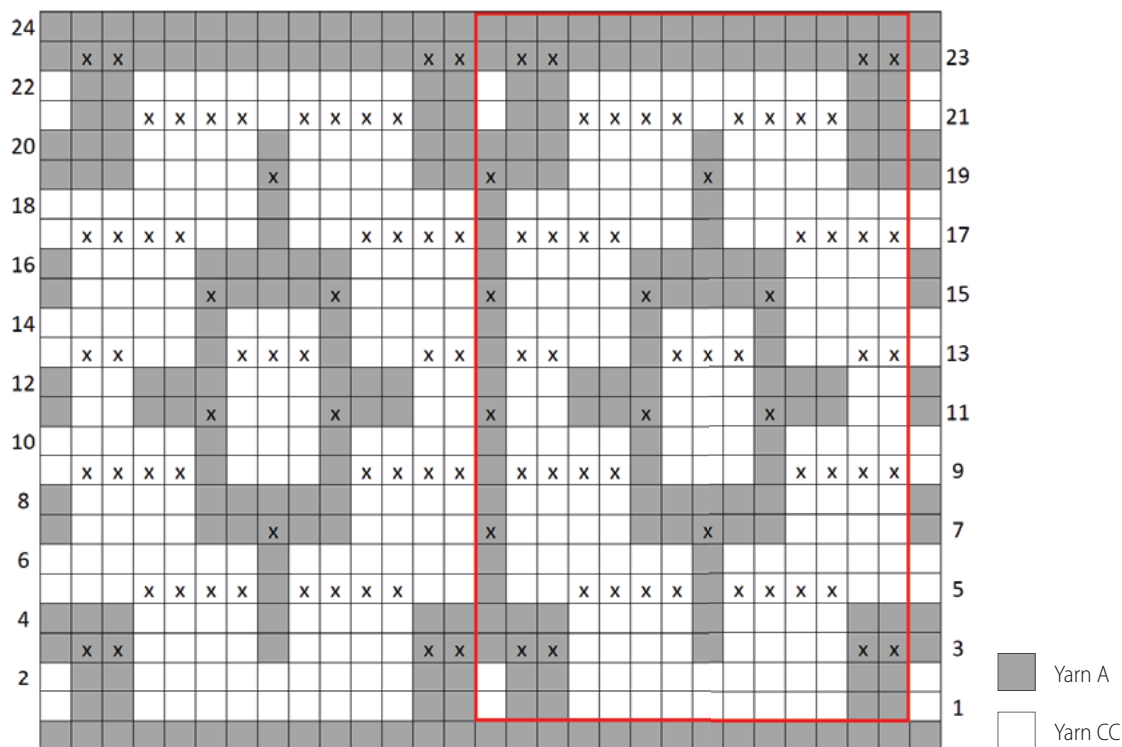
Row 5: With CC. Ch1, 1sc, [ch4, sk 3 sts, 7sc, ch4, sk 3 sts, 1sc] rep across, turn.

Row 6: Ch1, 1sc, [ch4, sk sp, 7sc, ch4, sk sp, 1sc] rep across (*change to A*), turn.

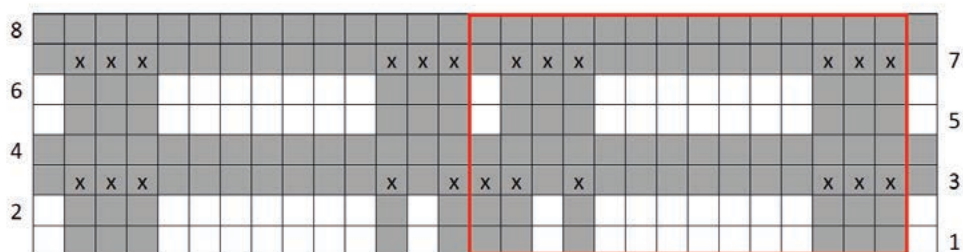
Row 7: With A. Ch1, 1sc, [3mdc, 7sc, 3mdc, 1sc] rep across, turn.

Row 8: Rep Row 4 (*change to CC*).

STITCH PATTERN 1 (CROSSES)



STITCH PATTERN 2 (STRIPES)



FINISHING

After rectangle is finished, do not fasten off Yarn A (*cut CC and weave in all ends*). Turn to work across last row. Ch1, [(1sc, ch2, 1sc) in first st, sc in each st across to last st, (1sc, ch2, 1sc) in last st, rotate to work across row edges, work 1sc in each row edge, rotate] 2 times, join with ss in first sc. Block back and front pieces to

measurements, as they might be slightly different lengths depending on which patterns you use. Then place them with WS tog and join with ss around three sides, leaving one short side unworked. Insert pillow form and close last side with ss. Fasten off, weave in ends.

BLUE WHALE COWL



MATERIALS

- ☀ *Scheepjes Our Tribe*
(70% superwash merino wool,
30% polyamide; 100g/420m)
- Yarn A:** 881 Blackberry Black x 2 balls
- Yarn B:** 882 Blue Flower Haze
x 1 ball
- Yarn C:** 880 Silver Birch x 1 ball
- ☀ 3.5mm crochet hook
- ☀ Yarn needle to weave in ends

GAUGE

21 sts and 26 rows to measure
10 x 10cm/4 x 4in over mosaic
pattern using 3.5mm hook, blocked

MEASUREMENTS

Approx. 40 x 170cm/15¾ x 67in, blocked

PATTERN NOTES

Blue Whale Cowl consists of two mosaic stitch patterns. The first is worked with Yarn A and B, and the second is worked with Yarn A and C. Worked as a long rectangle, the cowl is crocheted in rows back and forth. Then the short edges are joined together to turn it into a cowl, and a final border is added around the long edges.

INSTRUCTIONS

STITCH PATTERN 1

Stitch patt is a multiple of 8 sts + 1 st

Row 1 (RS): With Yarn A. Ch82, 1sc in second ch from hook, 1sc in each ch across, turn – 81 sc.

Row 2 (WS): Ch1 (*does not count as a st here and throughout*), 1sc in each st across (*change to B*), turn.

Row 3: With B. Ch1, 4sc, [ch2, sk 1 st, 3sc] rep to last st, 1sc to end, turn.

Row 4: Ch1, 4sc, [ch2, sk sp, 3sc] rep to last st, 1sc to end (*change to A*), turn.

Pattern repeat

Row 5: With A. Ch1, 1sc, [ch2, sk 1 st, 1sc, ch2, sk 1 st, 1mdc, 1sc, ch2, sk 1 st, 1sc, 1mdc] rep across working 1 sc instead of last mdc, turn.

Row 6: Ch1, 2sc, [ch2, sk sp, 2sc, ch2, sk sp, 1sc, ch2, sk sp, 2sc] rep across omitting last sc (*change to B*), turn.

Row 7: With B. Ch1, 1sc, [1mdc, 1sc, 1mdc, ch2, sk 1 st, 1sc, 1mdc, 1sc, ch2, sk 1 st] rep across omitting last ch2, 1sc in last st, turn.

Row 8: Ch1, 4sc, [ch2, sk sp, 3sc] rep to last st, 1sc to end (*change to A*), turn.

Row 9: With A. Ch1, 2sc, ch2, sk 1 st, 1sc, 1mdc, ch2, sk 1 st, 1sc, [ch2, sk 1 st, 1sc, 1mdc, ch2, sk 1 st, 1sc] rep to last 2 sts, ch2, sk 1 st, 1sc to end, turn.

Row 10: Ch1, 1sc, *ch2, sk sp, 1sc, [ch2, sk sp, 2sc] twice; rep from * across (*change to B*), turn.

Row 11: With B. Ch1, 2sc, 1mdc, 1sc, ch2, sk 1 st, 1mdc, 1sc, 1mdc, [ch2, sk 1 st, 1sc, 1mdc, 1sc, ch2, sk 1 st, 1mdc, 1sc, 1mdc] rep to last st, 1sc to end, turn.

Row 12: Rep Row 8.

End of pattern repeat

Rep Rows 5–12 twenty-five more times (212 rows in total).

Next row: With A. Ch1, 4sc, [1mdc, 3sc] rep to last st, 1sc to end, turn.

Last row: Ch1, 1sc in each st across (*change to C, cut B*), turn and proceed to Stitch Pattern 2.

STITCH PATTERN 2

Stitch patt is a multiple of 6 sts + 3 sts

Row 1 (RS): With C. Ch1, 1sc in each st across, turn.

Row 2 (WS): Rep Row 1 (*change to A*), turn.

Row 3: With A. Ch1, 3sc, [ch2, sk 1 st, 1sc, ch2, sk 1 st, 3sc] rep across, turn.

Row 4: Ch1, 3sc, [ch2, sk sp, 1sc, ch2, sk sp, 3sc] rep across (*change to C*), turn.

Pattern repeat

Row 5: With C. Ch1, 3sc, [1mdc, ch2, sk 1 st, 1mdc, 3sc] rep across, turn.

Row 6: Ch1, 4sc, [ch2, sk sp, 5sc] rep across omitting last sc (*change to A*), turn.

Row 7: With A. Ch1, 2sc, [ch2, sk 1 st, 1sc, 1mdc, 1sc, ch2, sk 1 st, 1sc] rep to last st, 1sc to end, turn.

Row 8: Ch1, 2sc, [ch2, sk sp, 3sc, ch2, sk sp, 1sc] rep to last st, 1sc to end (*change to C*), turn.

Row 9: With C. Ch1, 1sc, [ch2, sk 1 st, 1mdc, 3sc, 1mdc] rep to last 2 sts, ch2, sk 1 st, 1sc to end, turn.

Row 10: Ch1, 1sc, [ch2, sk sp, 5sc] rep to last sp and sc, ch2, sk sp, 1sc to end (*change to A*), turn.

Row 11: With A. Ch1, 1sc, 1mdc, 1sc, [ch2, sk 1 st, 1sc, ch2, sk 1 st, 1sc, 1mdc, 1sc] rep across, turn.

Row 12: Rep Row 4.

End of pattern repeat

Rep Rows 5–12 twenty-five more times (212 rows in total).

Next row: With C. Ch1, 3sc, [1mdc, 1sc, 1mdc, 3sc] rep across, turn.

Last row: Ch1, 1sc in each st across. Fasten off, cut both yarns.

FINISHING

Block rectangle to measurements. Using Yarn A, join short sides with ss (be careful not to twist). When you have finished joining, do not cut Yarn A and proceed to edge.

Edge: With RS facing you, ch1 (*does not count as a st*), *1sc in joining seam, work evenly with sc along edge of the cowl, join with ss in first sc, turn. Ch1, 1sc in each st around, join with ss in first sc, fasten off**. Attach Yarn A in the other side of the seam. Repeat from * to ** for this long edge. Weave in all ends.

PATTERNS 75

INSTRUCTIONS

MOSAIC PANEL

Stitch patt is a multiple of 6 sts + 1 st

Row 1 (RS): With Yarn A. Ch206, 1sc in second ch from hook, 1sc in each ch across, turn – 205 sts.

Row 2 (WS): Ch1 (*does not count as a st here and throughout*), 1sc in each st across (*change to B*), turn.

Row 3: With B. Ch1, 2sc, [ch2, sk 1 st, 1sc, ch2, sk 1 st, 3sc] rep across omitting last sc, turn.

Row 4: Ch1, 2sc, [ch2, sk sp, 1sc, ch2, sk sp, 3sc] rep across omitting last sc (*change to A*), turn.

Row 5: With A. Ch1, 2sc, 1mdc, ch2, sk 1 st, 1mdc, 1sc, [ch2, sk 1 st, 1sc, 1mdc, ch2, sk 1 st, 1mdc, 1sc] rep to last st, 1sc to end, turn.

Row 6: Ch1, 3sc, [ch2, sk sp, 2sc] rep to last st, 1sc to end (*change to B*), turn.

Row 7: With B. Ch1, 1sc, ch2, sk 1 st, 1sc, 1mdc, 1sc, [ch2, sk 1 st, 1mdc, ch2, sk 1 st, 1sc, 1mdc, 1sc] rep to last 2 sts, ch2, sk 1 st, 1sc to end, turn.

Row 8: Ch1, 1sc, [ch2, sk sp, 3sc, ch2, sk sp, 1sc] rep across (*change to A*), turn.

Row 9: With A. Ch1, 1sc, 1mdc, [ch2, sk 1 st, 1sc, ch2, sk 1 st, 1mdc, 1sc, 1mdc] rep across omitting last mdc, turn.

Row 10: Rep Row 4 (*change to B*).

Row 11: With B. Ch1, 2sc, 1mdc, ch2, sk 1 st, 1mdc, 1sc, [ch2, sk 1 st, 1sc, 1mdc, ch2, sk 1 st, 1mdc, 1sc] rep to last st, 1sc to end, turn.

Row 12: Rep Row 6 (*change to A*).

Row 13: With A. Ch1, 1sc, [ch2, sk 1 st, 1sc, 1mdc, 1sc, ch2, sk 1 st, 1mdc] rep across working 1sc instead of last mdc, turn.

Row 14: Rep Row 8 (*change to B*).

Row 15: With B. Ch1, 1sc, 1mdc, [ch4, sk 3 sts, 1mdc, 1sc, 1mdc] rep across omitting last mdc, turn.

Row 16: Ch1, 2sc, [ch4, sk sp, 3sc] rep across omitting last sc (*change to A*), turn.

Row 17: With A. Ch1, 1sc, [ch2, sk 1 st, 3mdc, ch2, sk 1 st, 1sc] rep across, turn.

Row 18: Ch1, 1sc, [ch2, sk sp, 3sc, ch2, sk sp, 1sc] rep across (*change to B*), turn.

Row 19: With B. Ch1, 1sc, 1mdc, 1sc,

ch2, sk 1 st, 1sc, 1mdc, [ch2, sk 1 st, 1mdc, 1sc, ch2, sk 1 st, 1sc, 1mdc] rep to last st, 1sc to end, turn.

Row 20: Rep Row 6 (*change to A*).

Row 21: With A. Ch1, 2sc, ch2, sk 1 st, 1mdc, [ch2, sk 1 st, 1sc, 1mdc, 1sc, ch2, sk 1 st, 1mdc] rep to last 3 sts, ch2, sk 1 st, 2sc to end, turn.

Row 22: Rep Row 4 (*change to B*).

Row 23: With B. Ch1, 1sc, [ch2, sk 1 st, 1mdc, 1sc, 1mdc, ch2, sk 1 st, 1sc] rep across, turn.

Row 24: Rep Row 8.

Row 25: With A. Rep Row 19.

Row 26: Rep Row 6.

Row 27: With B. Ch1, 2sc, ch2, sk 1 st, 1mdc, [ch2, sk 1 st, 1sc, 1mdc, 1sc, ch2, sk 1 st, 1mdc] rep to last 3 sts, ch2, sk 1 st, 2sc to end, turn.

Row 28: Rep Row 4.

Row 29: With A. Ch1, 1sc, ch2, sk 1 st, 1mdc, 1sc, 1mdc, [ch4, sk 3 sts, 1mdc, 1sc, 1mdc] rep to last 2 sts, ch2, sk 1 st, 1sc to end.

Row 30: Ch1, 1sc, ch2, sk sp, 3sc, [ch4, sk sp, 3sc] rep to last sp and sc, ch2, sk last sp, 1sc to end (*change to B*), turn.

Row 31: With B. Ch1, 1sc, 1mdc, [ch2, sk 1 st, 1sc, ch2, sk 1 st, 3mdc] rep across omitting last 2 mdc, 1sc to end, turn.

Row 32: Rep Row 4.

Rows 33–56: Rep Rows 5–28 once more, cut B.

Row 57 (RS): With A. Ch1, 2sc, [1mdc, 1sc, 1mdc, 3sc] rep across omitting last sc, turn.

Row 58 (WS): Ch1, 1sc in each st across. Turn and proceed to body.

BODY

Row 1 (RS): With A. Ch1, 1sc, [1dc, 1sc] rep across, turn.

Row 2 (WS): Ch2 (*does not count as a st here and throughout*), 1dc, [1sc, 1dc] across (*change to another hank of Yarn A in last st, do not fasten off prev hank*), turn.

Rep Rows 1–2 with A, alternating two hanks every two rows. When first hank is finished, cont with remaining hank of Yarn A until approx. 30g remains. Then change to C and cont with Rows 1–2, alternating Yarn A and C every two

rows. When Yarn A is finished, change to second hank of Yarn C and cont with C only, alternating two hanks. Cont to rep Rows 1–2 joining next color (D, E, F) when one of the hanks is finished to create one long gradient color change. When all colors except for G are finished, change to Yarn G in last st of Row 2, turn and proceed to border.

BORDER

Round 1 (RS): With G. Ch1, *(1sc, ch2, 1sc) in first st, [ch1, sk 1 st, 1sc] rep to last 2 sts, ch1, sk 1 st, (1sc, ch2, 1sc) in last st, turn a quarter and cont working with ch1 and 1sc patt along blanket's long edge (*make sure sc are evenly spaced in the same way as on top of the blanket*), turn a quarter; rep from * once more, join with ss in first sc, do not turn.

Round 2: Ss in next ch2-sp, ch1, *(1sc, ch2, 1sc) in corner ch2-sp, 1sc in next sc, [ch1, sk sp, 1sc in next sc] rep to next corner ch2-sp; rep from * three more times, ss in first sc.

Round 3: Ss in next ch2-sp, ch1, *(1sc, ch2, 1sc) in corner ch2-sp, ch1, sk 1 st, 1sc in next sc, [ch1, sk sp, 1sc in next sc] rep to last sc before next corner ch2-sp, ch1, sk 1 st; rep from * three more times, ss in first sc.

Rep Rounds 2–3 once more; then rep Round 2 once more, fasten off.

LACE EDGE

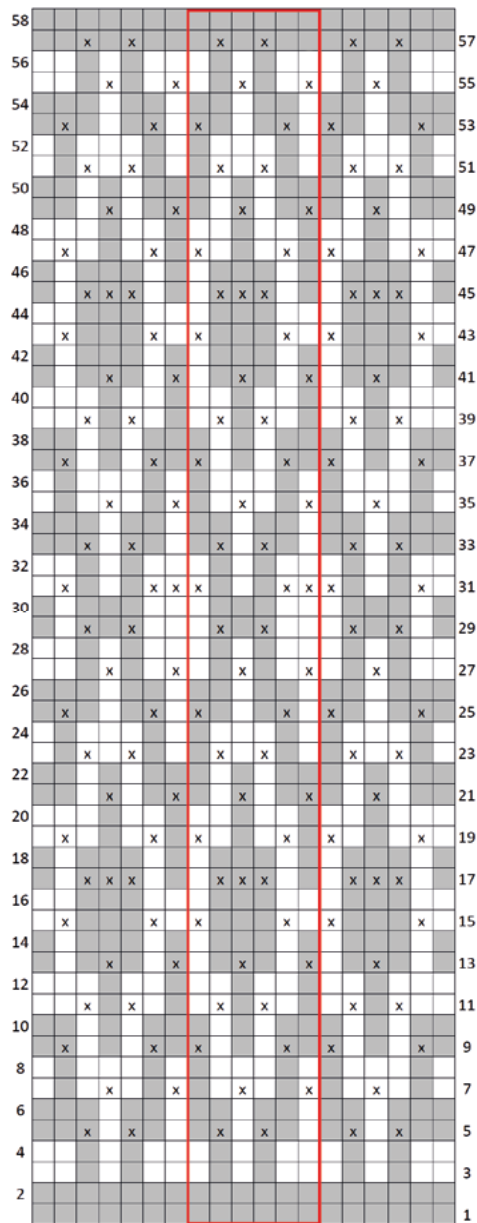
With RS facing you, attach Yarn G in corner ch2-sp at the blanket's lower mosaic edge.

Row 1 (RS): Ch2 (*does not count as a st here and throughout*), 1dc in same corner ch2-sp, ch3, sk 2 sts, 1sc in next sp, ch3, sk next st and sp, 1dc in next sc, [ch3, sk next sp and st, 1sc in next sp, ch3, sk next st and sp, 1dc in next st] rep across skipping 2 sts on last rep and working last dc in ch2-sp in next corner, turn.

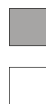
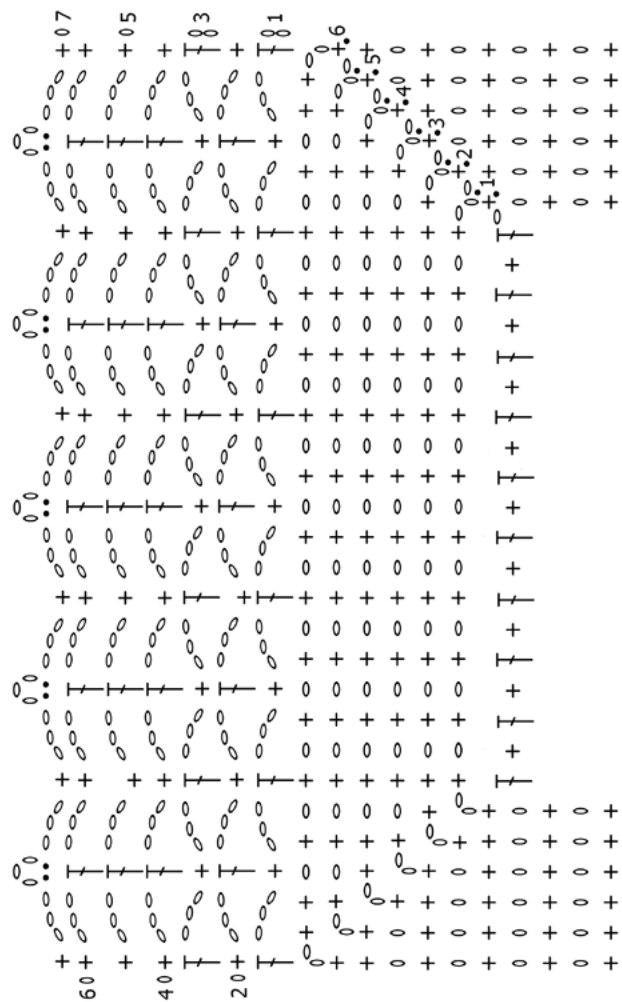
Row 2 (WS): Ch1, 1sc, [ch3, sk sp, 1dc in next sc, ch3, sk sp, 1sc in next dc] rep across, turn.

Row 3: Ch2, 1dc, [ch3, sk sp, 1sc in next dc, ch3, sk sp, 1dc in next sc] rep across, turn.

MOSAIC PANEL

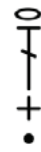


BORDER AND LACE EDGE



Yarn A: 115 Cirrostratus

Yarn B: 109 Cirrocumulus



ch chain

dc double crochet

sc single crochet

ss slip stitch

Row 4: Rep Row 2.

Row 5: Ch1, 1sc, [ch3, sk sp, 1dc in next dc, ch3, sk sp, 1sc in next sc] rep across, turn.

Row 6: Rep Row 5.

Row 7: Ch1, 1sc, [ch3, sk sp, (1ss, ch3, 1ss) in next dc, ch3, sk sp, 1sc in next sc] rep across, fasten off.

Weave in ends. Block blanket to measurements.

SILENCE SCARF



MATERIALS

- ☀ *Scheepjes Alpaca Rhythm*
(80% alpaca, 20% extra fine wool;
25g/200m)
- Yarn A:** 655 Twist x 2 balls
- Yarn B:** 654 Robotic x 3 balls
- Yarn C:** 662 Paso x 2 balls
- Yarn D:** 668 Disco x 1 ball
- Yarn E:** 653 Foxtrot x 2 balls
- ☀ 3.5mm crochet hook
- ☀ Yarn needle to weave in ends

GAUGE

24 sts and 32 rows to measure
10 x 10cm/4 x 4in over mosaic pattern
using 3.5mm hook, blocked

MEASUREMENTS

Approx. 33 x 225cm/13 x 88½in, blocked

PATTERN NOTES

This scarf is worked with all five colors at the same time. The yarn is not cut at the end of the rows but is carried up to the next row along the edge (with longer floats of yarn; make sure they are relaxed and do not pull).

INSTRUCTIONS

Stitch patt is a multiple of 4 sts + 1 st

Color Key 1

Row 1 (RS): With Yarn A. Ch74, 1sc in second ch from hook, 1sc in each ch across, turn – 73 sts.

Row 2 (WS): Ch1 (*does not count as a st here and throughout*), 1sc in each st across (*change to B*), turn.

Row 3: With B. Ch1, 2sc, [ch2, sk 1 st, 3sc] rep across omitting last sc, turn.

Row 4: Ch1, 2sc, [ch2, sk sp, 3sc] rep across omitting last sc (*change to A*), turn.

Row 5: With A. Ch1, 1sc, [ch2, sk 1 st, 1mdc, ch2, sk 1 st, 1sc] rep across, turn.

Row 6: Ch1, 1sc, [ch2, sk sp, 1sc] rep across (*change to B*), turn.

Row 7: With B. Ch1, 1sc, [1mdc, ch2, sk 1 st, 1mdc, 1sc] rep across, turn.

Row 8: Rep Row 4 (*change to C*).

Row 9: With C. Ch1, 2sc, 1mdc, [3sc, 1mdc] rep to last 2 sts, 2sc to end, turn.

Row 10: Rep Row 2 (*change to D*).

Row 11: With D. Ch1, 1sc, [ch2, sk 1 st, 1sc] rep across, turn.

Row 12: Ch1, 1sc, [ch2, sk sp, 1sc] rep across (*change to C*), turn.

Row 13: With C. Ch1, [1sc, 1mdc] 2 times, [ch2, sk 1 st, 1mdc, 1sc, 1mdc] rep to last st, 1sc to end, turn.

Row 14: Ch1, 4sc, [ch2, sk sp, 3sc] rep to last st, 1sc to end (*change to E*), turn.

Row 15: With E. Ch1, 2sc, [ch2, sk 1 st, 1sc, 1mdc, 1sc] rep to last 3 sts, ch2, sk 1 st, 2sc to end, turn.

Row 16: Rep Row 4 (*change to C*).

Row 17: With C. Rep Row 5.

Row 18: Rep Row 6 (*change to E*).

Row 19: With E. Rep Row 13.

Row 20: Rep Row 14 (*change to A*).

Row 21: With A. Ch1, 4sc, [1mdc, 3sc] rep to last st, 1sc to end, turn.

Row 22: Rep Row 2 (*change to D*).

Row 23: With D. Rep Row 11.

Row 24: Rep Row 12 (*change to A*).

Row 25: With A. Rep Row 7.

Row 26: Rep Row 4 (*change to B*).

Row 27: With B. Ch1, 2sc, 1mdc, 1sc, [ch2, sk 1 st, 1sc, 1mdc, 1sc] rep to last st, 1sc to end, turn.

Row 28: Rep Row 14 (*change to C*).

Row 29: With C. Rep Row 15.

Row 30: Rep Row 4 (*change to B*).

Row 31: With B. Ch1, 1sc, ch2, sk 1 st, 1mdc, [ch4, sk 3 sts, 1mdc] rep to last 2 sts, ch2, sk 1 st, 1sc to end, turn.

Row 32: Ch1, 1sc, ch2, sk sp, 1sc, [ch4, sk sp, 1sc] rep to last sp and sc, ch2, sk sp, 1sc to end (*change to C*), turn.

Row 33: With C. Ch1, 1sc, 1mdc, 1sc, [3mdc, 1sc] rep to last sp and sc, 1mdc, 1sc to end, turn.

Row 34: Rep Row 2 (*change color as needed*).

Rep Rows 1–34 once more with Color Key 2 and then once again with Color Key 3 (*listed below*).

Color Key 2 (3)

For all next repeats read Row 1 as follows: Ch1, 1sc in each st to end, turn.

Rows 1–2: E (C)

Rows 3–4: A (E)

Rows 5–6: E (C)

Rows 7–8: A (E)

Rows 9–10: B (A)

Rows 11–12: D

Rows 13–14: B (A)

Rows 15–16: C (B)

Rows 17–18: B (A)

Rows 19–20: C (B)

Rows 21–22: E (C)

Rows 23–24: D

Rows 25–26: E (C)

Rows 27–28: A

Rows 29–30: B (E)

Rows 31–32: A

Rows 33–34: B (E)

Rep Rows 1–34 alternating Color Keys 1–2–3 six more times (714 rows in total), fasten off and cut all yarns leaving approx. 15cm/6in tails.

BORDER

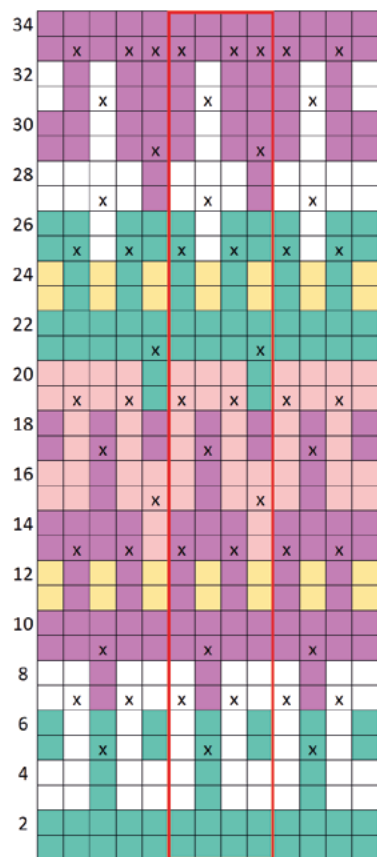
With RS facing you, attach Yarn B with ss in any corner.

Round 1: Work ss evenly around the entire scarf, join with ss in first ss.

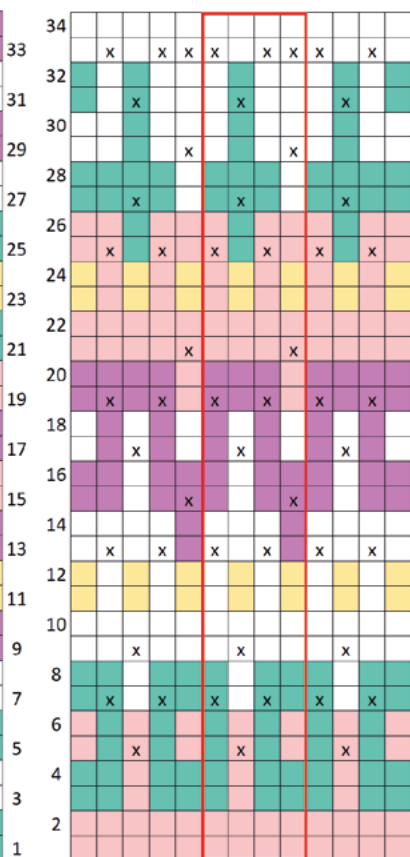
Round 2: Work rnd by inserting hook under two lps of each ss; ch2 (*does not count as a st*), *(1dc, ch2, 1dc) in corner ss, 1dc in each ss to next corner; rep from * three more times, join with ss in first dc, fasten off.

Round 3: With WS facing you, attach Yarn B in third lp of ss in any corner, visible on WS, and cont to work around the entire scarf inserting hook into third lp of each ss. Rep from * on Rnd 2 four times, join with ss in first dc, do not fasten off and cont working with ss through top lps of both dc rnds, joining them together. When join is finished, fasten off and weave in all ends.

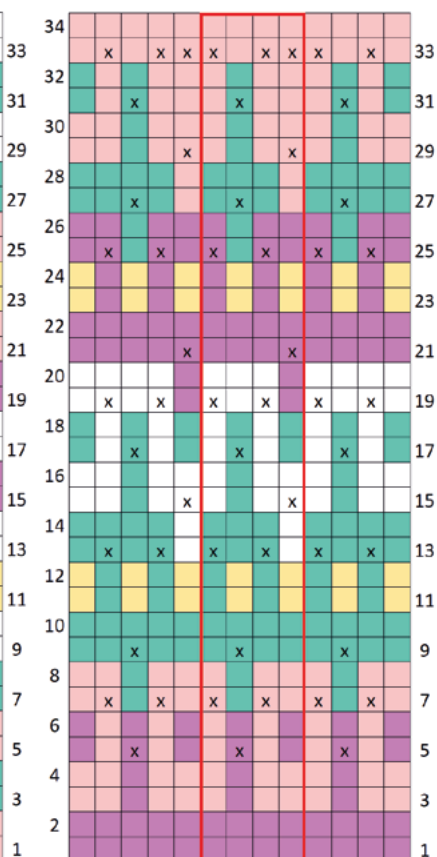
COLORWAY 1








COLORWAY 2

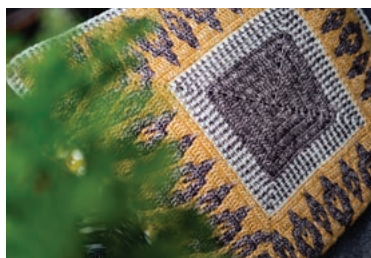


COLORWAY 3



-  Yarn A: 655 Twist
-  Yarn B: 654 Robotic
-  Yarn C: 662 Paso
-  Yarn D: 668 Disco
-  Yarn E: 653 Foxtrot

EVENING FLAMES PILLOW



MATERIALS

- ☀ *Scheepjes Stone Washed*
(78% cotton, 22% acrylic; 50g/130m)
- Yarn A:** 829 Obsidian x 3 balls
- Yarn B:** 814 Crystal Quartz x 1 ball
- Yarn C:** 809 Yellow Jasper x 2 balls
- ☀ 3.5mm and 4mm crochet hooks
- ☀ Ready-made fabric pillowcase,
50cm/20in
- ☀ Yarn needle to weave in ends and
stitch crochet square onto fabric
pillowcase

GAUGE

After 7 rounds central square measures approx. 10cm/4in across using 3.5mm hook, blocked

MEASUREMENTS

Approx. 50cm/20in across, blocked

PATTERN NOTES

Do not cut the yarn unless otherwise instructed in the pattern, carry it up to next round on the wrong side. You will have floats of yarn on the wrong side.

INSTRUCTIONS

CENTRAL SQUARE

Round 1 (RS): With Yarn A and 3.5mm hook. Make a magic ring, ch4 (*counts as corner ch2-sp here and throughout*), [3dc in magic ring, ch2] 3 times, 3dc in magic ring, ss to beg sp, turn – 3 dc per side.

Round 2 (WS): Ch1 (*does not count as a st here and throughout*), 1sc in same ch2-sp, [sc across to next corner, (1sc, ch2, 1sc) in next corner ch2-sp] 3 times, sc across to next corner, 1sc in next ch2-sp, ch2, ss to beg sc (*inserting hook from back to front here and each WS rnd*), turn – 5 sc per side.

Round 3 (RS): Ss in next corner ch2-sp, ch4, 2dc in same ch2-sp, [dc across to next corner, (2dc, ch2, 2dc) in next corner ch2-sp] 3 times, dc across to next corner, 2dc in next corner ch2-sp, ss to beg sp, turn – 9 dc per side.

Rounds 4–9: Rep Rounds 2–3 three times – 27 sts per side.

Round 10: Rep Round 2 – 29 sts per side.

Round 11 (RS): Change to 4mm hook. Changing to Yarn B, ss in next corner ch2-sp (*do not cut Yarn A*), *ch2, 1sc in same corner ch2-sp, [ch1, sk 1 st, 1sc] rep to last st before next corner, ch1, sk 1 st, 1sc in next corner ch2-sp; rep from * three more times, ss to beg sp changing back to A, turn – 16 sc and 15 ch1-*sp*s per side.

Round 12 (WS): With A. Ch1, *1sc in same corner ch2-sp, [ch1, sk 1 st, 1sc in next sp] rep to last st before next corner, ch1, sk 1 st, 1sc in next corner ch2-sp, ch2; rep from * three more times, ss to beg sc, turn – 17 sc and 16 ch1-*sp*s per side.

Round 13 (RS): Changing to B, ss in next ch2-sp, *ch2, 1sc in same corner ch2-sp, [ch1, sk 1 st, 1sc in next sp] rep to last st before next corner, ch1, sk 1 st, 1sc in next corner ch2-sp; rep from * three more times, ss to beg sp changing to A, turn – 18 sc and 17 ch1-*sp*s per side.

Rounds 14–17: Rep Rounds 12–13 twice, changing to C at end of Round 17 – 22 sc and 21 ch1-*sp*s per side.

Round 18: Cont on RS with C, *ch2, 1sc in same corner ch2-sp, [ch1, sk 1 st, 1sc in next sp] rep to last st before next corner, ch1, sk 1 st, 1sc in next corner ch2-sp; rep from * three more times, ss to beg sp, turn – 23 sc and 22 ch1-*sp*s per side.

Round 19 (WS): Change to 3.5mm hook. Cont with C. Ch1, [1sc in same corner ch2-sp, 1sc in each st and ch1-sp to next corner, 1sc in next corner ch2-sp, ch2] 4 times, ss to beg sc, turn – 47 sc per side.

MOSAIC PANEL

Chart begins on next rnd; follow chart or written instructions.

Round 1 (RS): Cont with C. Ss in next ch2-sp, *ch2, 1sc in same corner ch2-sp, 7sc, [ch1, sk 1 st, 7sc] 5 times, 1sc in next

ch2-sp; rep from * three more times, ss to beg sp, turn.

Round 2 (WS): Ch1, sk ss, *8sc, [ch1, sk sp, 7sc] 4 times, ch1, sk sp, 8sc, ch2, sk corner ch2-sp; rep from * three more times, ss to beg sc inserting hook from back to front (*here and each WS rnd*), turn.

Round 3: Changing to A, ss in next ch2-sp, *ch2, 1sc in same corner ch2-sp, 2sc, [ch5, sk 5 sts, 1sc, 1mdc, 1sc] 5 times, ch5, sk 5 sts, 2sc, 1sc in next corner ch2-sp; rep from * three more times, ss to beg sp, turn.

Round 4: Ch1, *1sc in same corner ch2-sp, 3sc, [ch5, sk sp, 3sc] 6 times, 1sc in next corner ch2-sp, ch2; rep from * three more times, ss to beg sc, turn.

Round 5: Changing to C, ss in next ch2-sp, *ch2, 1sc in same corner ch2-sp, 1sc, [ch3, sk 3 sts, 5mdc] 6 times, ch3, sk 3 sts, 1sc, 1sc in next corner ch2-sp; rep from * three more times, ss to beg sp, turn.

Round 6: Ch1, *1sc in same corner ch2-sp, 2sc, [ch3, sk sp, 5sc] 6 times, ch3, sk sp, 2sc, 1sc in next corner ch2-sp, ch2; rep from * three more times, ss to beg sc, turn.

Round 7: Changing to A, ss in next ch2-sp, *ch2, 1sc in same corner ch2-sp, [ch2, sk 2 sts, 1sc, 3mdc, 1sc, ch2, sk 2 sts, 2sc, 3mdc, 2sc] 3 times, ch2, sk 2 sts, 1sc, 3mdc, 1sc, ch2, sk 2 sts, 1sc in next corner ch2-sp; rep from * three more times, ss to beg sp, turn.

Round 8: Ch1, *1sc in same corner ch2-sp, 1sc, [ch2, sk sp, 5sc, ch2, sk sp, 7sc] 3 times, ch2, sk sp, 5sc, ch2, sk sp, 1sc, 1sc in next corner ch2-sp, ch2; rep from * three more times, ss to beg sc, turn.

Round 9: Changing to C, ss in next ch2-sp, *ch2, 1sc in same corner ch2-sp, 1sc, ch1, sk 1 st, 2mdc, [ch2, sk 2 sts, 1sc, ch2, sk 2 sts, 2mdc, ch2, sk 2 sts, 1sc, ch1, sk 1 st, 1sc, ch2, sk 2 sts, 2mdc] 3 times, ch2, sk 2 sts, 1sc, ch2, sk 2 sts, 2mdc, ch1, sk 1 st, 1sc, 1sc in next corner ch2-sp; rep from * three more times, ss to beg sp, turn.

Round 10: Ch1, *1sc in same corner ch2-sp, 2sc, ch1, sk sp, 2sc, ch2, sk sp, 1sc, ch2, sk sp, 2sc, [ch2, sk sp, 1sc, ch1, sk sp, 1sc, ch2, sk sp, 2sc, ch2, sk sp, 1sc, ch2, sk sp, 2sc] 3 times, ch1, sk sp, 2sc, 1sc in next

corner ch2-sp, ch2; rep from * three more times, ss to beg sc, turn.

Round 11: Changing to A, ss in next ch2-sp, *ch2, 1sc in same corner ch2-sp, ch2, sk 2 sts, 1sc, 1mdc, 1sc, [(ch1, sk 1 st, 2mdc) 2 times, ch1, sk 1 st, 1sc, 2mdc, ch1, sk 1 st, 1mdc, ch1, sk 1 st, 2mdc, 1sc] 3 times, (ch1, sk 1 st, 2mdc) 2 times, ch1, sk 1 st, 1sc, 1mdc, 1sc, ch2, sk 2 sts, 1sc in next corner ch2-sp; rep from * three more times, ss to beg sp, turn.

Round 12: Ch1, *1sc in same corner ch2-sp, 1sc, ch2, sk sp, 3sc, [(ch1, sk sp, 2sc) 2 times, ch1, sk sp, 3sc, ch1, sk sp, 1sc, ch1, sk sp, 3sc] 3 times, (ch1, sk sp, 2sc) 2 times, ch1, sk sp, 3sc, ch2, sk sp, 1sc, 1sc in next corner ch2-sp, ch2; rep from * three more times, ss to beg sc, turn.

Round 13: Changing to C, ss in next ch2-sp, *ch2, 1sc in same corner ch2-sp, 2sc, 2mdc, [ch3, sk 3 sts, 1mdc, 1sc, ch1, sk 1 st, 1mdc, ch1, sk 1 st, 1sc, 1mdc, ch3, sk 3 sts, 1mdc, 1sc, 1mdc] 3 times, ch3, sk 3 sts, 1mdc, 1sc, ch1, sk 1 st, 1mdc, ch1, sk 1 st, 1sc, 1mdc, ch3, sk 3 sts, 2mdc, 2sc, 1sc in next corner ch2-sp; rep from * three more times, ss to beg sp, turn.

Round 14: Ch1, *1sc in same corner ch2-sp, 5sc, [ch3, sk sp, 2sc, ch1, sk sp, 1sc, ch1, sk sp, 2sc, ch3, sk sp, 3sc] 3 times, ch3, sk sp, 2sc, ch1, sk sp, 1sc, ch1, sk sp, 2sc, ch3, sk sp, 5sc, 1sc in next corner ch2-sp, ch2; rep from * three more times, ss to beg sc, turn.

Round 15: Changing to A, ss in next ch2-sp, *ch2, 1sc in same corner ch2-sp, ch1, sk 1 st, 1sc, ch3, sk 3 sts, 1sc, 3mdc, 1sc, ch1, sk 1 st, 1mdc, 1sc, 1mdc, [ch2, sk 2 sts, 3mdc, 1sc, ch1, sk 1 st, 1sc, 3mdc, ch2, sk 2 sts, 1mdc, 1sc, 1mdc] 3 times, ch1, sk 1 st, 1sc, 3mdc, 1sc, ch3, sk 3 sts, 1sc, ch1, sk 1 st, 1sc in next corner ch2-sp; rep from * three more times, ss to beg sp, turn.

Round 16: Ch1, *1sc in same corner ch2-sp, 1sc, ch1, sk sp, 1sc, ch3, sk sp, 5sc, ch1, sk sp, 3sc, [ch2, sk sp, 4sc, ch1, sk sp, 4sc, ch2, sk sp, 3sc] 3 times, ch1, sk sp, 5sc, ch3, sk sp, 1sc, ch1, sk sp, 1sc, 1sc in next corner ch2-sp, ch2; rep from * three more times, ss to beg sc, turn.

Round 17: Changing to C, ss in next ch2-sp, *ch2, 1sc in same corner ch2-sp,

2sc, 1mdc, ch1, sk 1 st, 3mdc, ch2, sk 2 sts, 1sc, ch2, sk 2 sts, 1mdc, 1sc, [ch1, sk 1 st, 1sc, 2mdc, 1sc, ch3, sk 3 sts, 1mdc, ch3, sk 3 sts, 1sc, 2mdc, 1sc] 3 times, ch1, sk 1 st, 1sc, 1mdc, ch2, sk 2 sts, 1sc, ch2, sk 2 sts, 3mdc, ch1, sk 1 st, 1mdc, 2sc, 1sc in next corner ch2-sp; rep from * three more times, ss to beg sp, turn.

Round 18: Ch1, *1sc in same corner ch2-sp, 4sc, ch1, sk sp, 3sc, ch2, sk sp, 1sc, ch2, sk sp, 2sc, [ch1, sk sp, 4sc, ch3, sk sp, 1sc, ch3, sk sp, 4sc] 3 times, ch1, sk sp, 2sc, ch2, sk sp, 1sc, ch2, sk sp, 3sc, ch1, sk sp, 4sc, 1sc in next corner ch2-sp, ch2; rep from * three more times, ss to beg sc, turn.

Round 19: Changing to A, ss in next ch2-sp, *ch2, 1sc in same corner ch2-sp, ch4, sk 4 sts, 1sc, 1mdc, 1sc, ch2, sk 2 sts, 2mdc, ch1, sk 1 st, 2mdc, ch2, sk 2 sts, 1mdc, [ch4, sk 4 sts, 3mdc, 1sc, 3mdc, ch4, sk 4 sts, 1mdc] 3 times, ch2, sk 2 sts, 2mdc, ch1, sk 1 st, 2mdc, ch2, sk 2 sts, 1sc, 1mdc, 1sc, ch4, sk 4 sts, 1sc in next corner ch2-sp; rep from * three more times, ss to beg sp, turn.

Round 20: Ch1, *1sc in same corner ch2-sp, 1sc, ch4, sk sp, 3sc, ch2, sk sp, 2sc, ch1, sk sp, 2sc, ch2, sk sp, 1sc, [ch4, sk sp, 7sc, ch4, sk sp, 1sc] 3 times, ch2, sk sp, 2sc, ch1, sk sp, 2sc, ch2, sk sp, 3sc, ch4, sk sp, 1sc, 1sc in next corner ch2-sp, ch2; rep from * three more times, ss to beg sc, turn.

Round 21: Changing to C, ss in next ch2-sp, *ch2, 1sc in same corner ch2-sp, 1sc, ch1, sk 1 st, 4mdc, ch3, sk 3 sts, 2mdc, 1sc, ch1, sk 1 st, 1mdc, ch1, sk 1 st, 1sc, 2mdc, 1sc, [4mdc, 2sc, ch3, sk 3 sts, 2sc, 4mdc, 1sc] 3 times, 2mdc, 1sc, ch1, sk 1 st, 1mdc, ch1, sk 1 st, 1sc, 2mdc, ch3, sk 3 sts, 4mdc, ch1, sk 1 st, 1sc, 1sc in next corner ch2-sp; rep from * three more times, ss to beg sp, turn.

Round 22: Ch1, *1sc in same corner ch2-sp, 2sc, ch1, sk sp, 4sc, ch3, sk sp, 3sc, ch1, sk sp, 1sc, ch1, sk sp, 3sc, [7sc, ch3, sk sp, 6sc] 3 times, 4sc, ch1, sk sp, 1sc, ch1, sk sp, 3sc, ch3, sk sp, 4sc, ch1, sk sp, 2sc, 1sc in next corner ch2-sp, ch2; rep from * three more times, ss to beg sc, turn.

Round 23: Changing to A, ss in next ch2-

sp, *ch2, 1sc in same corner ch2-sp, ch2, sk 2 sts, 1sc, 1mdc, 1sc, ch2, sk 2 sts, 1sc, 3mdc, 1sc, ch2, sk 2 sts, 1mdc, 1sc, 1mdc, ch1, sk 1 st, 1sc, [ch3, sk 3 sts, 1sc, ch4, sk 4 sts, 3mdc, ch4, sk 4 sts, 1sc] 3 times, ch3, sk 3 sts, 1sc, ch1, sk 1 st, 1mdc, 1sc, 1mdc, ch2, sk 2 sts, 1sc, 3mdc, 1sc, ch2, sk 2 sts, 1sc, 1mdc, 1sc, ch2, sk 2 sts, 1sc in next corner ch2-sp; rep from * three more times, ss to beg sp, turn.

Round 24: Ch1, *1sc in same corner ch2-sp, 1sc, ch2, sk sp, 3sc, ch2, sk sp, 5sc, ch2, sk sp, 3sc, ch1, sk sp, 1sc, [ch3, sk sp, 1sc, ch4, sk sp, 3sc, ch4, sk sp, 1sc] 3 times, ch3, sk sp, 1sc, ch1, sk sp, 3sc, ch2, sk sp, 5sc, ch2, sk sp, 3sc, ch2, sk sp, 1sc, 1sc in next corner ch2-sp, ch2; rep from * three more times, ss to beg sc, turn.

Round 25: Changing to C, ss in next ch2-sp, *ch2, 1sc in same corner ch2-sp, 2sc, 2mdc, ch1, sk 1 st, 1sc, ch1, sk 1 st, 2mdc, ch2, sk 2 sts, 1sc, ch2, sk 2 sts, 2mdc, 1sc, ch1, sk 1 st, 1sc, 1mdc, 1sc, [3mdc, 1sc, 4mdc, 1sc, ch1, sk 1 st, 1sc, 4mdc, 1sc] 3 times, 3mdc, 1sc, 1mdc, 1sc, ch1, sk 1 st, 1sc, 2mdc, ch2, sk 2 sts, 1sc, ch2, sk 2 sts, 2mdc, ch1, sk 1 st, 1sc, ch1, sk 1 st, 2mdc, 2sc, 1sc in next corner ch2-sp; rep from * three more times, ss to beg sp, turn.

Round 26: Ch1, *1sc in same corner ch2-sp, 5sc, ch1, sk sp, 1sc, ch1, sk sp, 2sc, ch2, sk sp, 1sc, ch2, sk sp, 3sc, ch1, sk sp, 9sc, [3sc, ch1, sk sp, 12sc] 3 times, ch1, sk sp, 3sc, ch2, sk sp, 1sc, ch2, sk sp, 2sc, ch1, sk sp, 1sc, ch1, sk sp, 5sc, 1sc in next corner ch2-sp, ch2; rep from * three more times, ss to beg sc, turn.

Round 27: Changing to A, ss in next ch2-sp, *ch2, 1sc in same corner ch2-sp, ch3, sk 3 sts, 1sc, ch2, sk 2 sts, 1mdc, 1sc, 1mdc, ch2, sk 2 sts, 2mdc, ch1, sk 1 st, 2mdc, ch3, sk 3 sts, 1mdc, ch4, sk 4 sts, 1sc, [ch3, sk 3 sts, 1sc, ch3, sk 3 sts, 1mdc, (ch3, sk 3 sts, 1sc) 2 times] 3 times, ch4, sk 4 sts, 1mdc, ch3, sk 3 sts, 2mdc, ch1, sk 1 st, 2mdc, ch2, sk 2 sts, 1mdc, 1sc, 1mdc, ch2, sk 2 sts, 1sc, ch3, sk 3 sts, 1sc in next corner ch2-sp; rep from * three more times, ss to beg sp, turn.

Round 28: Ch1, *1sc in same corner ch2-sp, 1sc, ch3, sk sp, 1sc, ch2, sk sp, 3sc, ch2, sk sp, 2sc, ch1, sk sp, 2sc, ch3, sk sp, →

1sc, ch4, sk sp, 1sc, [ch3, sk sp, 1sc] 12 times, ch4, sk sp, 1sc, ch3, sk sp, 2sc, ch1, sk sp, 2sc, ch2, sk sp, 3sc, ch2, sk sp, 1sc, ch3, sk sp, 1sc, 1sc in next corner ch2-sp, ch2; rep from * three more times, ss to beg sc, turn.

Round 29: Changing to C, ss in next ch2-sp, *ch2, 1sc in same corner ch2-sp, 2sc, 3mdc, 1sc, 2mdc, 3sc, 2mdc, 2sc, 1mdc, 2sc, 3mdc, 1sc, 4mdc, 1sc, [3mdc, 1sc] 12 times, 4mdc, 1sc, 3mdc, 2sc, 1mdc, 2sc, 2mdc, 3sc, 2mdc, 1sc, 3mdc, 2sc, 1sc in next corner ch2-sp; rep from * three more times, ss to beg sp, do not turn – 105 sts per side.

Round 30 (RS): Cut C. Cont on RS. Rep Round 11 of central square (*do not forget to change to 4mm hook*) – 54 sc and 53 ch1-sp's per side.

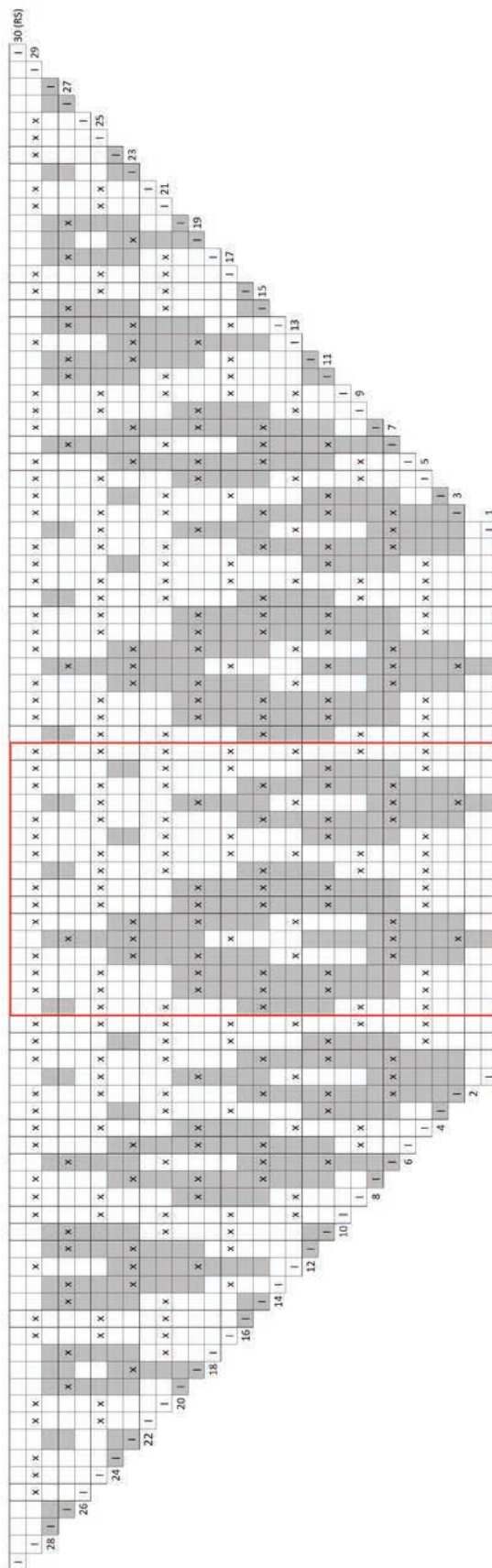
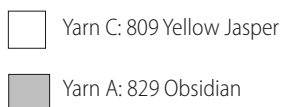
Rounds 31–32: Rep Rounds 12–13 of central square with 4mm hook. Fasten off. Weave in ends, block square to measurements.

FINISHING

Stitch the square by hand onto the ready-made fabric pillowcase using yarn needle and Yarn B.

HOW TO READ THE CHART

The chart shows one of the four sides of the mosaic panel. The pattern repeat marked with the red frame should be repeated twice in total. The squares marked with **I** at the beginning and end of every round indicate sc worked into the corner ch2-sp's. Refer to the pattern for detailed instructions on how the corners are worked. Please note that the number of skipped sts is always the same as the number of mdc and chains.



BEACH RIDE SHAWL



MATERIALS

- ☀ **Scheepjes Whirllette**
(60% cotton, 40% acrylic;
100g/455m)
- Yarn A:** 863 Chocolate x 2 balls
- ☀ **Scheepjes Whirl**
(60% cotton, 40% acrylic;
215g/1000m)
- Yarn B:** 761 Pistachi Oh So Nice
x 1 ball
- ☀ 3.5mm crochet hook
- ☀ Yarn needle to weave in ends
- ☀ Glass beads (optional)

GAUGE

20 sts and 26 rows to measure
10 x 10cm/4 x 4in over mosaic pattern
using 3.5mm hook, blocked

MEASUREMENTS

Approx. 95 x 200cm/37½ x 79in,
blocked

INSTRUCTIONS

- Row 1 (RS):** With Yarn A. Make a magic ring, ch1 (*does not count as a st here and throughout*), (1sc, ch2, 1sc) into ring, turn.
- Row 2 (WS):** Ch1, 2sc in first st, (1sc, ch2, 1sc) in corner ch2-sp, 2sc in last st (*change to B*), turn – 6 sc, 3 on each side.

Note: Each row will add 2 sc on striped side and the equivalent of 2 sc on the mosaic side (actual st count will vary on mosaic side).

- Row 3:** With B. Ch1, 2sc in first st, ch2, sk 1 st, 1sc, (1sc, ch2, 1sc) in corner ch2-sp, 2sc, 2sc in last st, turn.
- Row 4:** Ch1, 2sc in first st, 1sc in each st to corner, (1sc, ch2, 1sc) in corner ch2-sp, 2sc, ch2, sk sp, 1sc, 2sc in last st (*change*

to A), turn.

- Row 5:** With A. Ch1, 2sc in first st, 2sc, 1mdc, 2sc, ch2, sk 1 st, (1sc, ch2, 1sc) in corner ch2-sp, 1sc in each st to last, 2sc in last st, turn.
- Row 6:** Ch1, 2sc in first st, 1sc in each st to corner, (1sc, ch2, 1sc) in corner ch2-sp, 1sc, ch2, sk sp, 1sc in each st to last, 2sc in last st (*change to B*), turn.
- Row 7:** With B. Ch1, 2sc in first st, 2sc, ch2, sk 1 st, 3sc, ch2, sk 1 st, 1mdc, 2sc, (1sc, ch2, 1sc) in corner ch2-sp, 1sc in each st to last, 2sc in last st, turn.
- Row 8:** Ch1, 2sc in first st, 1sc in each st to corner, (1sc, ch2, 1sc) in corner ch2-sp, 4sc, [ch2, sk sp, 3sc] 2 times, 2sc in last st (*change to A*), turn.
- Row 9:** With A. Ch1, 2sc in first st, 4sc, 1mdc, ch2, sk 1 st, 1sc, ch2, sk 1 st, 1mdc, 4sc, ch2, sk 1 st, (1sc, ch2, 1sc) in corner ch2-sp, 1sc in each st to last, 2sc in last st, turn.
- Row 10:** Ch1, 2sc in first st, 1sc in each st to corner, (1sc, ch2, 1sc) in corner ch2-sp, 1sc, ch2, sk sp, 5sc, ch2, sk sp, 1sc, ch2, sk sp, 6sc, 2sc in last st (*change to B*), turn.
- Row 11:** With B. Ch1, 2sc in first st, 2sc, [ch2, sk 1 st, 3sc, ch2, sk 1 st, 1mdc, 1sc, 1mdc] rep to corner working 1sc instead of last mdc, (1sc, ch2, 1sc) in corner ch2-sp, 1sc in each st to last, 2sc in last st, turn.
- Row 12:** Ch1, 2sc in first st, 1sc in each st to corner, (1sc, ch2, 1sc) in corner ch2-sp, 4sc, [ch2, sk sp, 3sc] rep to last st, 2sc in last st (*change to A*), turn.
- Row 13:** With A. Ch1, 2sc in first st, 4sc, [1mdc, ch2, sk 1 st, 1sc, ch2, sk 1 st, 1mdc, 3sc] to last 2 sts before corner, 1sc, ch2, sk 1 st, (1sc, ch2, 1sc) in corner ch2-sp, 1sc in each st to last, 2sc in last st, turn.
- Row 14:** Ch1, 2sc in first st, 1sc in each st to corner, (1sc, ch2, 1sc) in corner ch2-sp, 1sc, ch2, sk sp, 5sc, [ch2, sk sp, 1sc, ch2, sk sp, 5sc] rep to last 2 sts, 1sc, 2sc in last st (*change to B*), turn.
- Row 15:** With B. Ch1, 2sc in first st, 4sc, ch2, sk 1 st, 2sc, 1mdc, [ch2, sk 1 st, 1mdc, 2sc, ch2, sk 1 st, 2sc, 1mdc] to last 2 sts before corner, ch2, sk 1 st, 1sc, (1sc, ch2, 1sc) in corner ch2-sp, 1sc in each st

to last, 2sc in last st, turn.

- Row 16:** Ch1, 2sc in first st, 1sc in each st to corner, (1sc, ch2, 1sc) in corner ch2-sp, 2sc, [ch2, sk sp, 3sc] to last 3 sts, 2sc, 2sc in last (*change to A*), turn.
- Row 17:** With A. Ch1, 2sc in first st, 5sc, [ch2, sk 1 st, 1mdc, ch2, sk 1 st, 2sc, 1mdc, 2sc] rep to last st before corner, ch2, sk 1 st, (1sc, ch2, 1sc) in corner ch2-sp, 1sc in each st to last, 2sc in last st, turn.
- Row 18:** Rep Row 14 – 35 sc on striped side.
- Rows 19–26:** Rep Rows 11–18 once more – 51 sc on striped side.
- Rows 27–30:** Rep Rows 11–14 once more – 59 sc on striped side.

Pattern repeat (20 rows):

- Rep Rows 11–18** twice (16 rows).
Rep Rows 11–14 once (4 rows).
End of pattern repeat

Cont with pattern repeat until your shawl is desired size, or until you have come to the end of Whirllette (Yarn A). When working the last RS row, follow the pattern for the corresponding row but make 1 sc instead of every ch2 mentioned in that row.

FINISHING

With Yarn B, crochet around all three sides with sc, working (1sc, ch2, 1sc) in each of three corners. Join with ss in first sc, fasten off. Weave in ends and block the shawl. Make three tassels with Whirl leftovers (Yarn B), decorate them with beads and attach to the points of the shawl (*optional, see page 68*).



SEAGRASS SHAWL



MATERIALS

- ☀ *Scheepjes Whirligig*
(20% alpaca, 80% virgin wool;
450g/1000m)
- Yarn A:** 202 Grey to Blue x 1 ball
- ☀ *Scheepjes Whirligigette*
(20% alpaca, 80% virgin wool;
100g/215m)
- Yarn B:** 253 Grey x 1 ball
- ☀ 4.5mm crochet hook
- ☀ Yarn needle to weave in ends, stitch
marker

GAUGE

21 sts and 18 rows to measure
10 x 10cm/4 x 4in over pattern below
using 4.5mm hook, blocked:

Row 1: Ch32 loosely, make 1sc in second
ch from hook, [ch1, sk next ch, 1sc in
next ch] rep across, turn – 31 sts (*each sc
and ch1-sp counts as one st*).

Row 2: Ch1, 1sc, 1sc in next sp, [ch1, sk
next sc, 1sc in next sp] rep to last sc, 1sc
to end, turn.

Row 3: Ch1, 1sc, [ch1, sk next sc, 1sc in
next sp] rep to last 2 sc, ch1, sk next sc,
1sc to end, turn.

Rows 4–21: Rep Rows 2–3.

MEASUREMENTS

Approx. 88 x 190cm/35 x 75in, blocked

PATTERN NOTES

Seagrass Shawl is worked with one
Whirligig and one Whirligigette cake at
the same time. The body of the shawl
is worked in a combination of linen
stitch and a mosaic stitch pattern. After
completing the body, a lace border with
puff stitches is worked along the two
side edges.

INSTRUCTIONS

Row 1 (RS): With Yarn A (*begin with end
which contrasts with Yarn B*). Make a magic
ring, ch1 (*does not count as a st here and
throughout*), 3sc in ring, turn – 3 sts.

Row 2 (WS): Ch1, 2sc, 2sc in last st
(*change to B*), turn – 4 sts.

Row 3: With B. Ch1, 2sc in first st, 1sc in
each st across, turn – 5 sts.

Row 4: Ch1, 1sc in each st to last st, 2sc
in last st (*change to A*), turn – 6 sts.

Row 5: With A. Rep Row 3 – 7 sts.

Row 6: Rep Row 4 (*change to B*) – 8 sts.

Row 7: With B. Rep Row 3 – 9 sts.

Row 8: Rep Row 4 – 10 sts.

Row 9: With A. Ch1, 2sc in first st, [ch4,
sk 3 sts, 1sc] 2 times, 1sc to end, turn
– 5 sc and 2 ch4-sps.

Row 10: Ch1, 2sc, [ch4, sk sp, 1sc] 2
times, 2sc in last st (*change to B*), turn
– 6 sc and 2 ch4-sps.

Row 11: With B. Ch1, 2sc in first st, 2sc,
3mdc, ch2, sk 1 st, 3mdc, 2sc, turn – 6 sc,
6 mdc and 1 ch2-sp.

Row 12: Ch1, 5sc, ch2, sk sp, 6sc, 2sc in
last st (*change to A*), turn – 13 sc and 1
ch2-sp.

Row 13: With A. Ch1, 2sc in first st, 2sc,
ch4, sk 3 sts, 2sc, 1mdc, 2sc, ch2, sk 1 st,
2sc, turn – 10 sc, 1 mdc, 1 ch4-sp and 1
ch2-sp.

Row 14: Ch1, 2sc, ch2, sk sp, 5sc, ch4, sk
sp, 3sc, 2sc in last st (*change to B*), turn –
12 sc, 1 ch4-sp and 1 ch2-sp.

Row 15: With B. Ch1, 2sc in first st, 1sc,
ch2, sk 1 st, 2sc, 3mdc, 2sc, ch2, sk 1 st,
2sc, 1mdc, 2sc, turn – 11 sc, 4 mdc and 2
ch2-sps.

Row 16: Ch1, 5sc, ch2, sk sp, 7sc, ch2, sk
sp, 2sc, 2sc in last st (*change to A*), turn
– 16 sc and 2 ch2-sps.

Row 17: With A. Ch1, 2sc in first st, [ch4,
sk 3 sts, 1mdc, ch4, sk 3 sts, 1sc] rep to
last st, 1sc to end, turn – 5 sc, 2 mdc and
4 ch4-sps.

Row 18: Ch1, 2sc, [ch4, sk sp, 1sc] rep to
last st, 2sc in last st (*change to B*), turn
– 8 sc and 4 ch4-sps.

Row 19: With B. Ch1, 2sc in first st, 2sc,
[3mdc, 1sc] rep to last st, 1sc to end, turn
– 9 sc and 12 mdc.

Row 20: Rep Row 4 – 22 sts.

Row 21: With A. Ch1, 2sc in first st, [ch1,
sk 1 st, 1sc in next st] rep to last st, 1sc to
end, turn – 13 sc and 10 ch1-sps.

Row 22: Ch1, 1sc, [ch1, sk next st, 1sc in
next sp] rep to last 2 sts, ch1, sk next st,
2sc in last st (*change to B*), turn – 13 sc
and 11 ch1-sps.

Row 23: With B. Ch1, 2sc in first st, [ch1,
sk 1 st, 1sc in next sp] rep to last st, 1sc to
end, turn – 14 sc and 11 ch1-sps.

Row 24: Ch1, 1sc in each st and sp to
last st, 2sc in last st (*change to A*), turn –
26 sts.

Row 25: With A. Ch1, 2sc in first st, [ch4,
sk 3 sts, 1sc] rep to last st, 1sc to end,
turn – 9 sc and 6 ch4-sps.

Row 26: Rep Row 18 – 10 sc and 6
ch4-sps.

Row 27: With B. Ch1, 2sc in first st, 2sc,
[3mdc, ch2, sk 1 st, 3mdc, 1sc] rep to last
st, 1sc to end, turn – 8 sc, 18 mdc and 3
ch2-sps.

Row 28: Ch1, 5sc, [ch2, sk sp, 7sc]
rep across, work one more sc in last st
(*change to A*), turn – 27 sc and 3 ch2-sps.

Row 29: With A. Ch1, 2sc in first st, 2sc,
[ch4, sk 3 sts, 2sc, 1mdc, 2sc] 3 times,
ch2, sk 1 st, 2sc, turn – 18 sc, 3 mdc, 3
ch4-sps and 1 ch2-sp.

Row 30: Ch1, 2sc, ch2, sk sp, 5sc, [ch4, sk
sp, 5sc] 2 times, ch4, sk sp, 3sc, 2sc in last
st (*change to B*), turn – 22 sc, 3 ch4-sps
and 1 ch2-sp.

Row 31: With B. Ch1, 2sc in first st, 1sc,
[ch2, sk 1 st, 2sc, 3mdc, 2sc] 3 times, ch2,
sk 1 st, 2sc, 1mdc, 2sc, turn – 19 sc, 10
mdc and 4 ch2-sps.

Row 32: Ch1, 5sc, [ch2, sk sp, 7sc]
3 times, ch2, sk sp, 2sc, 2sc in last st
(*change to A*), turn – 30 sc and 4 ch2-sps.

Row 33: Rep Row 17 – 7 sc, 4 mdc and
8 ch4-sps.

Row 34: Rep Row 18 (*do not change
yarn!*) – 12 sc and 8 ch4-sps.

For the remainder of the shawl, every
other set of two rows will be worked
with only Yarn A. The other rows will be
worked with both Yarn A and Yarn B.
The color will be changed just before
or just after the mosaic part of the row.
Floats of yarn should stay on WS. →

Row 35 (RS): With A. Ch1, 2sc in first st (*change to B in second sc by grabbing it up behind work – here and on all RS rows, pm in second sc, drop A on WS*); continue with B, 2sc, [3mdc, 1sc] rep to last st, 1sc to end, turn – 13 sc and 24 mdc.

Row 36 (WS): Ch1, 1sc in each st to m (*change to A in last sc by grabbing it up in front of work, drop B on WS – here and for all WS rows*), continue with A, ch1 (*pm*), sk marked st, 2sc in last st, turn – 37 sc and 1 ch1-sp.

Row 37: With A only. Ch1, 2sc in first st, ch1, sk 1 st, 1sc in marked sp (*pm*), [ch1, sk 1 st, 1sc in next st] rep to last st, 1sc to end, turn – 21 sc and 18 ch1-sps.

Row 38: Ch1, 1sc in first st, [ch1, sk 1 st, 1sc in next sp] rep to m, ch1 (*pm*), sk marked st, 1sc in next sp, ch1, sk 1 st, 2sc in last st, turn – 21 sc and 19 ch1-sps.

Pattern repeat

Row 39: With A. Ch1, 2sc in first st, *ch1, sk 1 st, 1sc in next sp**; rep from * to m working last sc in marked sp (*change to B, pm*); continue with B, rep between * and ** to last st, 1sc to end, turn – 22 sc and 19 ch1-sps.

Row 40: With B. Ch1, 1sc in every st and sp to m (*change to A in last sc*); continue with A, 1sc in marked st (*pm*), 1sc in next sp, [ch1, sk 1 st, 1sc in next sp] rep to last 2 sts, ch1, sk 1 st, 2sc in last st, turn – *stitch counts are not given for remaining rows*.

Row 41: With A only. Ch1, 2sc in first st, [ch1, sk 1 st, 1sc in next sp] rep to 1 st before m, ch1, sk next st, 1sc in marked st (*pm*), ch2, sk 1 st, 1sc, [ch4, sk 3 sts, 1sc] 8 times, 1sc to end, turn.

Row 42: Ch1, 2sc, [ch4, sk sp, 1sc] 8 times, ch2, sk sp, 1sc in marked st (*pm*), 1sc in next sp, [ch1, sk 1 st, 1sc in next sp] rep to last 2 sts, ch1, sk 1 st, 2sc in last st, turn.

Row 43: With A. Ch1, 2sc in first st, [ch1, sk 1 st, 1sc in next sp] rep to 1 st before m, ch1, sk next st, 1sc in marked st (*change to B, pm*); continue with B, 1mdc, 1sc, [3mdc, ch2, sk 1 st, 3mdc, 1sc] 4 times, 1sc to end, turn.

Row 44: With B. Ch1, 5sc, [ch2, sk sp,

7sc] 3 times, ch2, sk sp, 5sc (*change to A in last sc*); continue with A, 1sc in marked st (*pm*), 1sc in next sp, [ch1, sk 1 st, 1sc in next sp] rep to last 2 sts, ch1, sk 1 st, 2sc in last st, turn.

Row 45: With A only. Ch1, 2sc in first st, [ch1, sk 1 st, 1sc in next sp] rep to 1 st before m, ch1, sk next st, 1sc in marked st (*pm*), [ch4, sk 3 sts, 2sc, 1mdc, 2sc] 4 times, ch2, sk 1 st, 2sc, turn.

Row 46: Ch1, 2sc, ch2, sk sp, 5sc, [ch4, sk sp, 5sc] 3 times, ch4, sk sp, 1sc in marked st (*pm*), 1sc in next sp, [ch1, sk 1 st, 1sc in next sp] rep to last 2 sts, ch1, sk 1 st, 2sc in last st, turn.

Row 47: With A. Ch1, 2sc in first st, [ch1, sk 1 st, 1sc in next sp] rep to 1 st before m, ch1, sk next st, 1sc in marked st (*change to B, pm*); continue with B, [3mdc, 2sc, ch2, sk 1 st, 2sc] 4 times, 1mdc, 2sc, turn.

Row 48: With B. Ch1, 5sc, [ch2, sk sp, 7sc] 3 times, ch2, sk sp, 5sc (*change to A in last sc*); continue with A, 1sc in marked st (*pm*), 1sc in next sp, [ch1, sk 1 st, 1sc in next sp] rep to last 2 sts, ch1, sk 1 st, 2sc in last st, turn.

Row 49: With A only. Ch1, 2sc in first st, [ch1, sk 1 st, 1sc in next sp] rep to 1 st before m, ch1, sk next st, 1sc in marked st (*pm*), ch2, sk 1 st, 1sc, [ch4, sk 3 sts, 1mdc, ch4, sk 3 sts, 1sc] 4 times, 1sc to end, turn.

Row 50: Ch1, 2sc, [ch4, sk sp, 1sc] 8 times, ch2, sk sp, 1sc in marked st (*pm*), 1sc in next sp, [ch1, sk 1 st, 1sc in next sp] rep to last 2 sts, ch1, sk 1 st, 2sc in last st, turn.

Row 51: With A. Ch1, 2sc in first st, [ch1, sk 1 st, 1sc in next sp] rep to 1 st before m, ch1, sk next st, 1sc in marked st (*change to B, pm*); continue with B, 1mdc, 1sc, [3mdc, 1sc] 8 times, 1sc in last st, turn.

Row 52: With B. Ch1, 1sc in each st to m (*change to A in last sc*); continue with A, 1sc in marked st (*pm*), 1sc in next sp, [ch1, sk 1 st, 1sc in next sp] rep to last 2 sts, ch1, sk 1 st, 2sc in last st, turn.

Row 53: With A only. Ch1, 2sc in first st, [ch1, sk 1 st, 1sc in next sp] rep to 1 st before m, ch1, sk next st, 1sc in marked st (*pm*), [ch1, sk 1 st, 1sc in next st] rep to

last st, 1sc to end turn.

Row 54: Ch1, 1sc in first st, *ch1, sk 1 st, 1sc in next sp**; rep from * to m, ch1, sk marked st (*pm*), 1sc in next sp; rep between * and ** to last 2 sts, ch1, sk 1 st, 2sc in last st, turn.
End of pattern repeat

Rep Rows 39–54 eleven more times, omitting Rows 53 and 54 on last repeat. Do not fasten off.

Note: Depending on how much yarn is left, you might need to make fewer repeats. When you have used up the Whirligigette cake, attach the matching tail of the same Whirligig and continue with pattern repeats working with both ends of the same cake. The stitch pattern will gradually fade in one color. After all repeats are done you should have approx. 25g of Yarn A to finish the border.

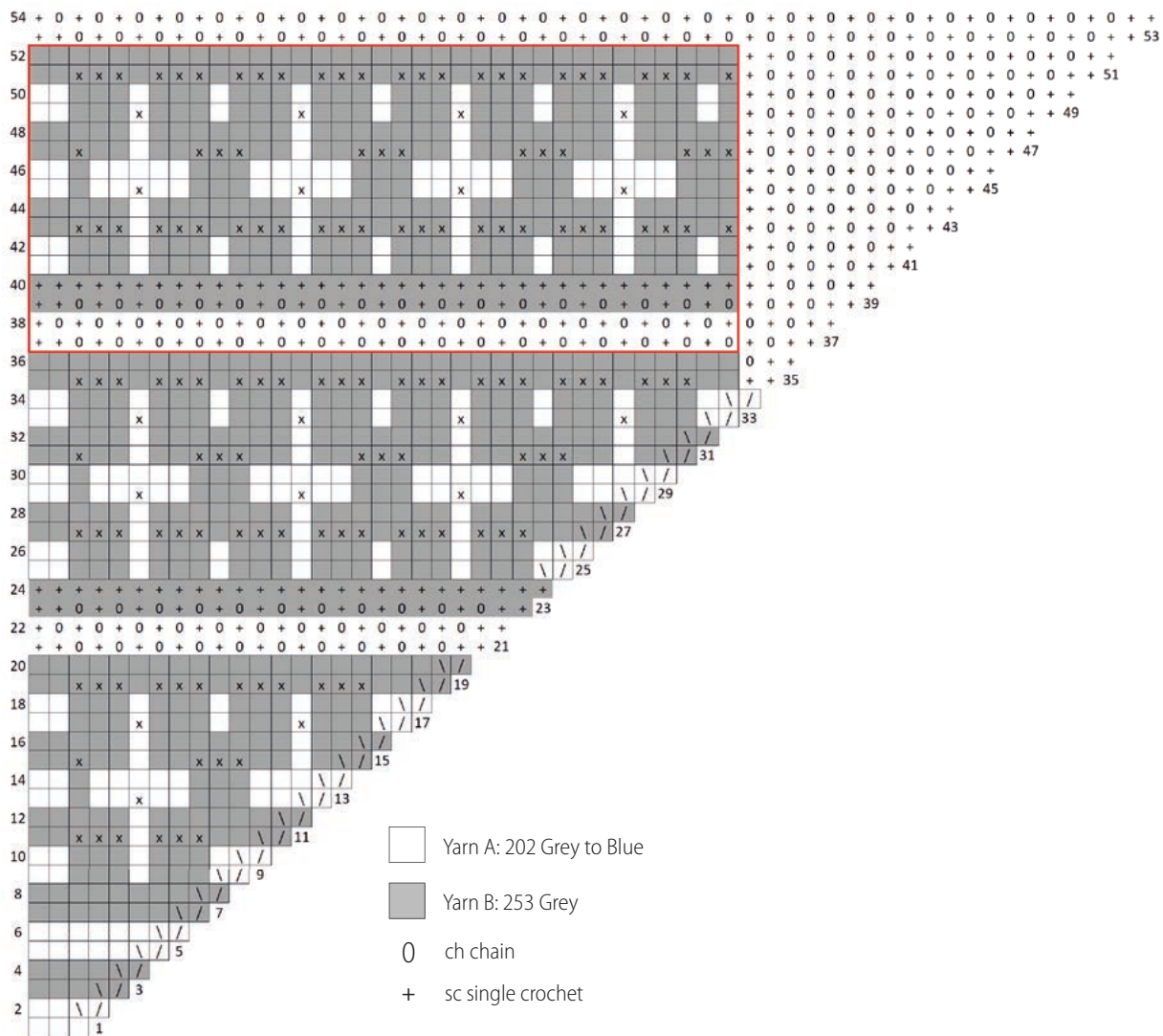
EDGE AND FINISHING

Row 1 (RS): Work along two straight sides of the shawl and mosaic part (only) on the third side.

Ch1, 2sc in first st, *ch1, sk 1 st, 1sc in next st or sp; rep from * to last st, (1sc, ch2, 1sc) in last st, turn a quarter and continue along next straight side; work evenly with the same gauge as for the body of the shawl: **ch1, sk next row, 1sc in the edge of next row; rep from ** to end of straight edge, ch1, (1sc, ch2, 1sc) into the corner with magic ring, turn a quarter and continue along the edge of the mosaic section of the longest side: rep from ** to the end of mosaic up to Row 34 (*inserting hook under floats of yarn to hide them*), leave the non-mosaic section unworked. Fasten off.

Row 2 (WS): With WS facing you, attach Yarn A with ss into ch2-sp in the same corner as magic ring. Work along the two shorter sides.

Ch1, (1sc, ch2, 1sc) in ch2-sp, *ch1, sk next st, 1sc in next sp**; rep from * to 1 sc before next corner, ch1, sk 1 st, (1sc, ch2, 1sc) in next ch2-sp; rep between * and ** to last 2 sts, ch1, sk 1 st, 2sc in last st, turn.



Row 3 (RS): Work along two straight sides. You might need to play with skipped sts and sps before and after each corner – pf in the corners should be worked into ch2-sp.

Ch2, (1pf, ch2, 1pf) in first st, ch3, sk next st, 1ss in next sp, *ch3, skip next st and sp, 1pf in next st, ch3, skip next sp and st, 1ss in next sp**, rep from * to 1 st before

next corner, ch3, sk 1 st, 1pf in corner ch2-sp, ch3, sk 1 st, 1ss in next sp; rep between * and ** to next corner, ch3, (1pf, ch2, 1pf) in last st, fasten off. Block shawl to measurements and weave in all ends.

HOW TO READ THE CHART

Squares marked with \ / represent increases: Two sc worked in the same (first or last) st of previous row.

BREATHE THE BREEZE CARDIGAN



MATERIALS

- ☀ *Scheepjes Bamboo Soft*
(50% bamboo, 50% cotton;
50g/150m)
- Yarn A:** 263 Smoky Diamond
x 5 (5, 6, 6, 7, 7, 8, 8, 9) balls
- Yarn B:** 255 Celestial Blue
x 1 (1, 1, 1, 1, 1, 1, 1) ball
- Yarn C:** 250 Decadent Plum
x 2 (2, 2, 2, 2, 2, 3, 3) balls
- Yarn D:** 260 Golden Nugget
x 1 (1, 1, 2, 2, 2, 2, 2) balls
- ☀ 3mm and 3.5mm crochet hooks
- ☀ 3 x 1cm/½in buttons
- ☀ Yarn needle to weave in ends
- ☀ 4 stitch markers

GAUGE

Gauge for yoke: 22 sts and 16 rows to measure 10 x 10cm/4 x 4in over yoke pattern using 3mm hook, blocked
Gauge for mosaic: 22 sts and 30 rows to measure 10 x 10cm/4 x 4in over mosaic pattern using 3.5mm hook, blocked

SIZES

S1 (S2: M1: M2: L1: L2: XL1: XL2: 2X)

To fit actual bust: 81 (86: 91: 97: 102:
107: 112: 117: 122)cm/32 (34: 36: 38: 40:
42: 44: 46: 48)in

Finished bust: 90 (95.5: 100.5: 106: 111.5:
117: 122.5: 128: 133.5)cm/35¼ (37½: 39¾:
41¾: 44: 46: 48¼: 50½: 52½)in

PATTERN NOTES

This cardigan is designed to fit with 10–12.5cm/4–5in of positive ease at the bust and 3–5cm/1¼–2in of positive ease at the upper arm. The garment is worked seamlessly from the top down. First the yoke with raglan increases is worked

in rows to separation for the body and sleeves, then the lower body with mosaic pattern is worked in rows to the bottom, followed by the sleeves worked top down to the cuffs. The length of both the body and the sleeves is easily adjustable.

INSTRUCTIONS

YOKE

To begin: With Yarn A and 3mm hook.
Ch75 (77, 77, 79, 83, 85, 91, 95, 97) *loosely*.

Set up rows

Row 1 (RS): Sc in second ch from hook, 1sc (*pm for raglan*), 15 (15, 15, 15, 17, 17, 19, 21, 21) sc for sleeve, 1sc (*pm*), 38 (40, 40, 42, 42, 44, 46, 46, 48) sc for back, 1sc (*pm*), 15 (15, 15, 15, 17, 17, 19, 21, 21) sc for sleeve, 1sc (*pm*), 1sc to end, turn.

You will have 1 sc in each of four raglan seams (marked), 38 (40, 40, 42, 42, 44, 46, 46, 48) sts for back, 1 st for each front and 15 (15, 15, 15, 17, 17, 19, 21, 21) sts for each sleeve.

Row 2 (WS): Ch2 (*does not count as a st here and throughout*), 3dc in first st, 1dc in marked st (*pm*), *3dc in next st, 1dc in each st to one st left before next m, 3dc in next st, 1dc in marked (*pm*); rep from * two more times, 3dc in last st, turn.

Row 3 (RS): Ch1 (*does not count as a st here and throughout*), 1sc in each st across, moving markers up to the corr sts (*here and throughout*), turn.

You will have 1 sc in each raglan seam (marked), 42 (44, 44, 46, 46, 48, 50, 50, 52) sts for back, 3 sts for each front and 19 (19, 19, 19, 21, 21, 23, 25, 25) sts for each sleeve.

RAGLAN AND V-NECK INCREASES

On the next rows you will increase for raglan seams and V-neck at the same time.

Inc Set 1 (2 rows)

Row 1 (WS) – inc for body and sleeves: Ch2, 2dc in first st, 1dc in each st to one st left before next m, 3dc in next st, 1dc (*pm*), *3dc in next st, 1dc in each st to one st left before next m, 3dc in next st, 1dc (*pm*); rep from * two more times, 3dc in next st, 1dc in each st to last, 2dc in last st, turn – 18 sts inc'd.

Row 2 (RS) – no inc: Ch1, 1sc in each st across, turn.

Rep Inc Set 1: 2 (3, 2, 3, 2, 3, 4, 5, 6) more times.

You will have 1 sc in each raglan seam (marked), 54 (60, 56, 62, 58, 64, 70, 74, 80) sts for back, 12 (15, 12, 15, 12, 15, 18, 21, 24) sts for each front and 31 (35, 31, 35, 33, 37, 43, 49, 53) sts for each sleeve.

Inc Set 2 (4 rows)

Row 1 (WS) – inc for body and sleeves:

Ch2, 2dc in first st, 1dc in each st to one st left before next m, 3dc in next st, 1dc (*pm*), *3dc in next st, 1dc in each st to one st left before next m, 3dc in next st, 1dc (*pm*); rep from * two more times, 3dc in next st, 1dc in each st to last, 2dc in last st, turn – 18 sts inc'd.

Row 2 (RS) – no inc: Ch1, 1sc in each st across, turn.

Row 3 (WS) – inc for fronts and back:

Ch2, 2dc in first st, 1dc in each st to one st left before next m, 3dc in next st, 1dc (*pm*), 1dc in each st to next m, 1dc (*pm*), 3dc in next st, 1dc in each st to one st left before next m, 3dc in next st, 1dc (*pm*), 1dc in each st to next m, 1dc (*pm*), 3dc in next st, 1dc in each st to last, 2dc in last st, turn – 10 sts inc'd.

Row 4: Rep Row 2.

Rep Inc Set 2: 3 (3, 4, 4, 5, 5, 5, 5, 5) more times.

You will have 1 sc in each raglan seam (marked), 86 (92, 96, 102, 106, 112, 118, 122, 128) sts for back, 36 (39, 42, 45, 48, 51, 54, 57, 60) sts for each front and 47 (51, 51, 55, 57, 61, 67, 73, 77) sts for each sleeve. At this point yoke should measure approx. 15.6 (16.8: 18.1: 19.4: 20.6: 21.9: 23.1: 24.4: 25.6)cm/6¼ (6½: 7¼: 7½: 8: 8½: 9: 9½: 10)in vertically down from front raglan seam.

SEPARATE FOR BODY AND SLEEVES

Row 1 (WS): Ch2, 2dc in first st, *1dc in each st to m, 1dc in marked st, ch8 (8, 10, 10, 12, 12, 12, 14, 14), skip all sts for sleeve, 1dc in next marked st; rep from * once more, 1dc in each st to last, 2dc in last st, turn – 88 (94, 98, 104, 108, 114, 120, 124, 130) sts for back, 38 (41, 44, 47,

50, 53, 56, 59, 62) sts for each front, and two underarm bridges.

Row 2 (RS): Ch1, 1sc in each st and ch across, turn – 180 (192, 206, 218, 232, 244, 256, 270, 282) sts for lower body.

Row 3 (WS): Ch2, 2dc in first st, 1dc in each st to last, 2dc in last st, turn.

Row 4 (RS): Ch1, 1sc in each st across, turn. *Mark first and last st of this row.*

Rep Rows 3–4: 5 (5, 4, 4, 3, 3, 3, 2, 2) more times – 192 (204, 216, 228, 240, 252, 264, 276, 288) sts.

Row 5 (WS): Ch2, 1dc in each st across, turn.

Row 6 (RS): Ch1, 1sc in each st across, turn.

Rep Rows 5–6 until lower body reaches approx. 12.5cm/5in from underarm. Then rep Row 6 on WS again working one inc approx. at the center back, change to Yarn B in last sc, cut Yarn A and proceed to Mosaic Panel – 193 (205, 217, 229, 241, 253, 265, 277, 289) sts.

MOSAIC PANEL

Gauge check: To meet new gauge you might need to change to 3.5mm hook. Chart begins on next row (page 91); follow chart or written instructions. Stitch patt is multiple of 12 sts + 1 st

Row 1 (RS): With B. Ch1, 1sc in each st across, turn.

Row 2 (WS): Rep Row 1 (*change to C, cut B*), turn.

Row 3 (RS): With C. Ch1, 4sc, [ch2, sk 1 st, 3sc] rep to last st, 1sc to end, turn.

Row 4 (WS): Ch1, 4sc, [ch2, sk sp, 3sc] rep to last st, 1sc to end (*change to D, do not cut C*), turn.

Row 5: With D. Ch1, 1sc, ch4, sk 3 sts, 1mdc, 1sc, ch2, sk 1 st, 1sc, 1mdc, [ch3, sk 2 sts, 1sc, 1mdc, 1sc, ch3, sk 2 sts, 1mdc, 1sc, ch2, sk 1 st, 1sc, 1mdc] rep to last 4 sts, ch4, sk 3 sts, 1sc to end, turn.

Row 6: Ch1, 1sc, ch4, sk sp, 2sc, ch2, sk sp, 2sc, [ch3, sk sp, 3sc, ch3, sk sp, 2sc, ch2, sk sp, 2sc] rep to last sp and sc, ch4, sk sp, 1sc to end (*change to C*), turn.

Row 7: With C. Ch1, 1sc, 3mdc, 1sc, ch2, sk 1 st, 1mdc, ch2, sk 1 st, 1sc, [2mdc, 1sc,

ch2, sk 1 st, 1sc, 2mdc, 1sc, ch2, sk 1 st, 1mdc, ch2, sk 1 st, 1sc] rep to last sp and sc, 3mdc, 1sc to end, turn.

Row 8: Ch1, 5sc, ch2, sk sp, 1sc, ch2, sk sp, 4sc, [ch2, sk sp, 4sc, ch2, sk sp, 1sc, ch2, sk sp, 4sc] rep to last st, 1sc to end (*change to D*), turn.

Row 9: With D. Ch1, 1sc, ch5, sk 4 sts, 1mdc, 1sc, 1mdc, [ch4, sk 3 sts, 1sc, 1mdc, 1sc, ch4, sk 3 sts, 1mdc, 1sc, 1mdc] rep to last 5 sts, ch5, sk 4 sts, 1sc to end, turn.

Row 10: Ch1, 1sc, ch5, sk sp, 3sc, [ch4, sk sp, 3sc] rep to last sp and sc, ch5, sk sp, 1sc to end (*change to C*), turn.

Row 11: With C. Ch1, 1sc, 4mdc, 1sc, ch2, sk 1 st, 1sc, [3mdc, 1sc, ch2, sk 1 st, 1sc] rep to last sp and sc, 4mdc, 1sc to end, turn.

Row 12: Ch1, 6sc, [ch2, sk sp, 5sc] rep to last st, 1sc to end (*change to D*), turn.

Row 13: With D. Ch1, 1sc, ch5, sk 4 sts, 1sc, 1mdc, 1sc, [ch4, sk 3 sts, 1sc, 1mdc, 1sc] rep to last 5 sts, ch5, sk 4 sts, 1sc to end, turn.

Row 14: Rep Row 10.

Row 15: With C. Ch1, 1sc, 4mdc, ch4, sk 3 sts, [3mdc, ch2, sk 1 st, 1sc, ch2, sk 1 st, 3mdc, ch4, sk 3 sts] rep to last sp and sc, 4mdc, 1sc to end, turn.

Row 16: Ch1, 5sc, ch4, sk sp, 3sc, [ch2, sk sp, 1sc, ch2, sk sp, 3sc, ch4, sk sp, 3sc] rep to last 2 sts, 2sc to end (*change to D*), turn.

Row 17: With D. Ch1, 1sc, ch4, sk 3 sts, 1sc, 3mdc, 1sc, [ch3, sk 2 sts, 1mdc, 1sc, 1mdc, ch3, sk 2 sts, 1sc, 3mdc, 1sc] rep to last 4 sts, ch4, sk 3 sts, 1sc to end, turn.

Row 18: Ch1, 1sc, ch4, sk sp, 5sc, [ch3, sk sp, 3sc, ch3, sk sp, 5sc] rep to last sp and sc, ch4, sk sp, 1sc to end (*change to C*), turn.

Row 19: With C. Ch1, 1sc, 3mdc, [ch2, sk 1 st, 1sc] 2 times, ch2, sk 1 st, 2mdc, 1sc, *ch2, sk 1 st, 1sc, 2mdc, [ch2, sk 1 st, 1sc] 2 times, ch2, sk 1 st, 2mdc, 1sc; rep from * to last st working 1mdc instead of last sc in repeat, 1sc to end, turn.

Row 20: Ch1, 4sc, [ch2, sk sp, 1sc] 2 times, ch2, sk sp, 3sc, *ch2, sk sp, 3sc, [ch2, sk sp, 1sc] 2 times, ch2, sk sp, 3sc; rep from * to last st, 1sc to end (*change to D*), turn.

Row 21: With D. Ch1, 1sc, ch2, sk 1 st, 2sc, 1mdc, [ch2, sk 1 st, 1mdc] 2 times, 2sc,

*ch2, sk 1 st, 1mdc, ch2, sk 1 st, 2sc, 1mdc, [ch2, sk 1 st, 1mdc] 2 times, 2sc; rep from * to last 2 sts, ch2, sk 1 st, 1sc to end, turn.

Row 22: Ch1, 1sc, [ch2, sk sp, 3sc, ch2, sk sp, 1sc] rep across (*change to C*), turn.

Row 23: With C. Ch1, 1sc, 1mdc, ch2, sk 1 st, 2sc, 1mdc, ch2, sk 1 st, 1mdc, 2sc, ch2, sk 1 st, 1mdc, [1sc, 1mdc, ch2, sk 1 st, 2sc, 1mdc, ch2, sk 1 st, 1mdc, 2sc, ch2, sk 1 st, 1mdc] rep to last st, 1sc to end, turn.

Row 24: Ch1, 2sc, [ch2, sk sp, 3sc] rep across omitting last sc (*change to D*), turn.

Row 25: With D. Ch1, 1sc, [1sc, 1mdc, 1sc, ch3, sk 2 sts, 1mdc, ch3, sk 2 sts, 1sc, 1mdc, 1sc, ch2, sk 1 st] rep to last st omitting last ch2, 1sc to end, turn.

Row 26: Ch1, 4sc, ch3, sk sp, 1sc, ch3, sk sp, 3sc, [ch2, sk sp, 3sc, ch3, sk sp, 1sc, ch3, sk sp, 3sc] rep to last st, 1sc to end (*change to C*), turn.

Row 27: With C. Ch1, 1sc, *ch2, sk 1 st, 1sc, [ch2, sk 1 st, 2mdc] 2 times, ch2, sk 1 st, 1sc, ch2, sk 1 st, 1mdc; rep from * across working 1sc instead of last mdc, turn.

Row 28: Ch1, 1sc, *ch2, sk sp, 1sc, [ch2, sk sp, 2sc] 2 times, [ch2, sk sp, 1sc] 2 times; rep from * across (*change to D*), turn.

Row 29: With D. Ch1, 1sc, [1mdc, 1sc, 1mdc, ch2, sk 1 st, 1sc, 1mdc, 1sc, ch2, sk 1 st, 1mdc, 1sc, 1mdc, ch2, sk 1 st] rep across omitting last ch2, 1sc to end, turn.

Row 30: Rep Row 4 (*change to C*).

Row 31: With C. Ch1, 1sc, [3sc, 1mdc, ch2, sk 1 st, 1sc, ch2, sk 1 st, 1mdc, 3sc, 1mdc] rep across working 1sc instead of last mdc, turn.

Row 32: Ch1, 5sc, [ch2, sk sp, 1sc, ch2, sk sp, 9sc] rep across omitting last 4 sc (*change to D*), turn.

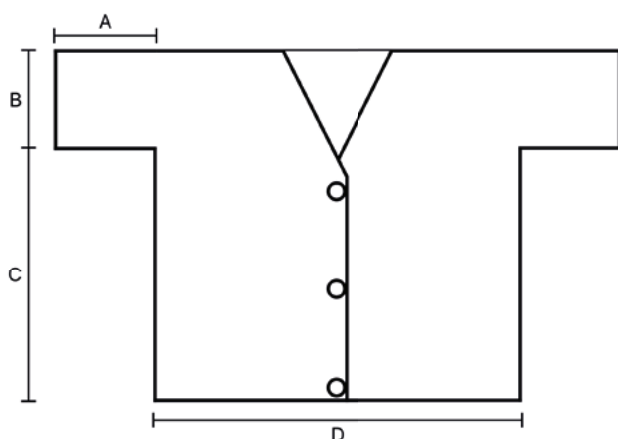
Row 33: With D. Ch1, 1sc, [ch5, sk 4 sts, 1mdc, 1sc, 1mdc, ch5, sk 4 sts, 1sc] rep across, turn.

Row 34: Ch1, 1sc, [ch5, sk sp, 3sc, ch5, sk sp, 1sc] rep across (*change to C*), turn.

Row 35: With C. Ch1, 1sc, [4mdc, 3sc, 4mdc, 1sc] rep across, turn.

Row 36: Ch1, 1sc in each st across (*change to B, cut C and D*).

Rows 37–38: With B. Ch1, 1sc in each st across (*change to A in last st of Row 38, cut B*), turn. Proceed to Collar and Hem. →



COLLAR AND HEM

Round 1 (RS): With A. Ch1, (1sc, ch2, 1sc) in first st, 1sc blo in each st across the cardigan's bottom to last st, (1sc, ch2, 1sc) in last st; continue on RS, turn a quarter and work with evenly spaced sc along right front edge to back raglan seam, work sc3tog in line with *back raglan seam*, work 1sc blo in each st across back to next raglan seam, work sc3tog in line with *back raglan seam*, work with evenly spaced sc along edge of left front down to the bottom (make sure both fronts have equal number of sts), join with ss in beg sc, turn.

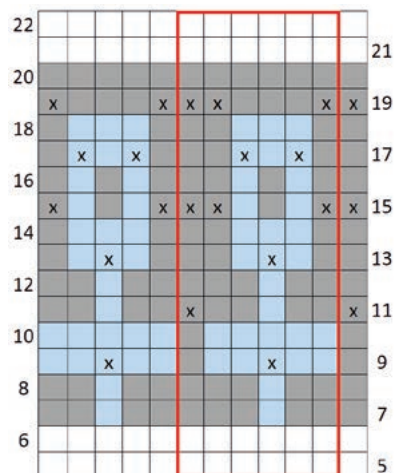
Round 2 (WS): Ch1, beg in joining ss,

1sc blo in each st around to ch2-sp at the bottom of right front, (1sc, ch2, 1sc) in ch2-sp, 1sc blo in each st across the bottom to next ch2-sp, (1sc, ch2, 1sc) in next corner sp, ch2, join with ss to beg sc inserting the hook from back to front, turn.

Round 3 (RS): Ss in next sc, ss to corner ch2-sp, ch1, (1sc, ch2, 1sc) in same ch2-sp, 1sc blo in each st across bottom to next ch2-sp, (1sc, ch2, 1sc) in ch2-sp, 1sc blo in each st across right front, back and left front working sc3tog in line with back raglan seams, join with ss to beg sc, turn.

Round 4 (WS): Rep Round 2, fasten off and proceed to Front Bands.

CUFF



FRONT BANDS

Place m along right front band for buttonholes. Place one m in line with existing m (approx. at the bottom of V-neck), place another m 1cm/1/2in from bottom, and place third m centered between these two.

Row 1 (RS): With RS facing you, attach Yarn A with ss in ch2-sp at the bottom of right front. Ch1, 1sc in same sp, *1sc blo in each st to m, ch2, sk marked st; rep from * two more times, 1sc blo in each st across the rest of right front, back and left front working last sc in ch2-sp at the bottom, turn.

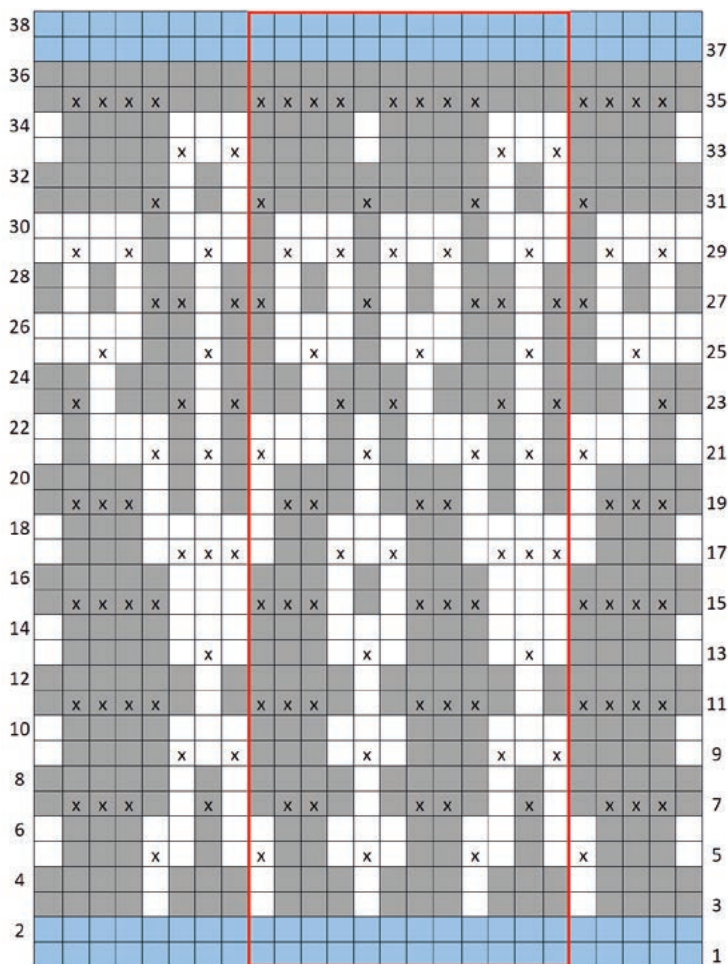
MEASUREMENTS TABLE, CM

	S1	S2	M1	M2	L1	L2	XL1	XL2	2X
A, SLEEVE LENGTH	12.5	12.5	12.5	12.5	13.5	13.5	15	15	15
B, SLEEVE WIDTH	12.5	13.5	13.5	15	16.5	16.5	17.5	20.5	20.5
C, LENGTH FROM UNDERARM	27.5	27.5	27.5	27.5	27.5	27.5	27.5	27.5	27.5
D, WIDTH	45	47.5	50.5	53	56	58.5	61.5	64	66.5

MEASUREMENTS TABLE, INCHES

	S1	S2	M1	M2	L1	L2	XL1	XL2	2X
A, SLEEVE LENGTH	4¾	4¾	4¾	4¾	5¼	5¼	5¼	5¾	5¾
B, SLEEVE WIDTH	4¾	5¼	5¼	6	6½	6½	7	8	8
C, LENGTH FROM UNDERARM	11	11	11	11	11	11	11	11	11
D, WIDTH	17¾	18¾	19¾	21	22	23	24	25¼	26¼

MOSAIC PANEL



- Yarn B: 255 Celestial Blue
- Yarn C: 250 Decadent Plum
- Yarn D: 260 Golden Nugget

Stitch patt is multiple of 6 sts

Round 7 (RS): Changing to C, ch1 (*cut D*), [3sc, ch2, sk 1 st, 2sc] rep around, ss to beg sc, turn.

Round 8 (WS): Ch1, [2sc, ch2, sk sp, 3sc] rep around, ss to beg sc, turn.

Round 9: Changing to B, ch1, [ch2, sk 1 st, 2sc, 1mdc, 2sc] rep around, ss to beg sp, turn.

Round 10: Ch1, [5sc, ch2, sk sp] rep around, ss to beg sc, turn.

Round 11: Changing to C, ch1, [1mdc, 2sc, ch2, sk 1 st, 2sc] rep around, ss to beg mdc, turn.

Round 12: Ch1, [2sc, ch2, sk sp, 3sc] rep around, ss to beg sc, turn.

Round 13: *ss in next 2 sts*, changing to B, ch1, [1sc, 1mdc, 1sc, ch4, sk 3 sts] rep around, ss to beg sc, turn.

Round 14: [Ch4, sk sp, 3sc] rep around, ss to beg sp, turn.

Round 15: Changing to C, ch1, [ch2, sk 1 st, 1sc, ch2, sk 1 st, 3mdc] rep around, ss to beg sp, turn.

Round 16: Ch1, [3sc, ch2, sk sp, 1sc, ch2, sk sp] rep around, ss to beg sc, turn.

Round 17: Changing to B, ch1, [1mdc, 1sc, 1mdc, ch4, sk 3 sts] rep around, ss to beg mdc, turn.

Round 18: [Ch4, sk sp, 3sc] rep around, ss to beg sp, turn.

Round 19: Changing to C, ch1 (*cut B*), [3sc, 3mdc] rep around, ss to beg sc, turn.

Round 20: Ch1, 1sc in each st around, ss to beg sc, turn.

Rounds 21–22: Changing to D, ch1 (*cut C*), 1sc in each st around, ss to beg sc, turn. Fasten off.

FINISHING

Sew buttons onto button band matching buttonholes, weave in all tails and block cardigan to measurements.

Row 2 (WS): Ch1, 1sc blo in each st across working 1sc in each ch2-sp for buttonholes, turn.

Row 3 (RS): Ch1, 1sc blo in each st across, turn.

Row 4 (WS): Rep Row 3. Fasten off.

SLEEVES (both alike)

With RS facing you, using 3mm hook attach Yarn A in approx. middle chain of underarm. In Round 1, for sizes S2, M2, L1, XL2 work a total of – (1, –, 1, 3, –, –, 3, –) additional st(s) by adding st(s) in corner(s) or evenly as desired; for sizes S1, M1, L2, XL1, 2X work 1 (–, 1, –, –, 1, 1, –, 1) sc2tog in any st at bottom of underarm.

Round 1 (RS): Ch1 (*does not count as a st here and throughout*), 1sc in same ch

as join, 1sc in each underarm ch and st around (*adding or subtracting as noted above*), join with ss to beg sc, turn – 54 (60, 60, 66, 72, 72, 78, 90, 90) sts.

Round 2 (WS): Ch2 (*does not count as a st here and throughout*), 1dc in each st around, ss in first dc (*inserting hook from back to front here and each WS rnd*), turn.

Round 3: Ch1, 1sc in each st around, ss to beg sc, turn.

Rep Rounds 2–3: 1 (1, 1, 1, 2, 2, 2, 3, 3) more times.

Round 4: Rep Round 2 (*change to D*).

Rounds 5–6: With D. Rep Round 3.

MOSAIC CUFFS (both alike)

Gauge check: To meet new gauge you might need to change to 3.5mm hook.

NORTHERN WINDS BLANKET



MATERIALS

- ☀ *Scheepjes Metropolis*
(75% extra fine merino wool,
25% nylon; 50g/200m)
- Yarn A:** 24 Cota x 6 balls
- Yarn B:** 63 Toronto x 4 balls
- Yarn C:** 70 Cairo x 10 balls
- Yarn D:** 25 Nice x 8 balls
- ☀ 3.5mm crochet hook
- ☀ Yarn needle to weave in ends

GAUGE

20 sts and 26 rows to measure
10 x 10cm/4 x 4in over mosaic pattern
using 3.5mm hook, blocked

MEASUREMENTS

Approx. 130 x 180cm/51¼ x 70¾in,
blocked

INSTRUCTIONS

Stitch patt is a multiple of 8 sts + 7 sts

Row 1 (RS): With Yarn A. Ch256, 1sc in second ch from hook, 1sc in each ch across, turn – 255 sts.

Row 2 (WS): Ch1 (*does not count as a st here and throughout*), 1sc in each st across (*change to B*), turn.

Pattern repeat

Row 3: With B. Ch1, 1sc, [ch2, sk 1 st, 1sc] rep across, turn.

Row 4: Ch1, 1sc, [ch2, sk sp, 1sc] rep across (*change to A*), turn.

Row 5: With A. Ch1, [1sc, 1mdc] rep to last st, 1sc to end, turn.

Row 6: Rep Row 2.

Row 7: With B. Ch1, 1sc, [ch2, sk 1 st, 3sc] rep to last 2 sts, ch2, sk 1 st, 1sc to end, turn.

Row 8: Ch1, 1sc, [ch2, sk sp, 3sc] rep to last sp and sc, ch2, sk sp, 1sc to end (*change to A*), turn.

Row 9: With A. Ch1, 1sc, 1mdc, 1sc, [ch2, sk 1 st, 1sc, 1mdc, 1sc] rep across, turn.

Row 10: Ch1, 3sc, [ch2, sk sp, 3sc] rep across (*change to B*), turn.

Row 11: With B. Ch1, 1sc, [ch2, sk 1 st, 1sc, 1mdc, 1sc] rep to last 2 sts, ch2, sk 1 st, 1sc to end, turn.

Row 12: Rep Row 8.

Row 13: With A. Ch1, 1sc, 1mdc, [3sc, 1mdc] rep to last st, 1sc to end, turn.

Row 14: Rep Row 2.

Rows 15–17: Rep Rows 3–5.

Row 18: Rep Row 2 (*change to C, cut A and B*).

Rows 19–20: With C. Rep Row 2 (*change to D in last st of Row 20*).

Row 21: With D. Ch1, 3sc, [ch2, sk 1 st, 3sc] rep across, turn.

Row 22: Rep Row 10 (*change to C*).

Row 23: With C. Ch1, 2sc, [ch2, sk 1 st, 1mdc, ch2, sk 1 st, 1sc] rep to last st, 1sc to end, turn.

Row 24: Ch1, 2sc, [ch2, sk sp, 1sc] rep to last st, 1sc to end (*change to D*), turn.

Row 25: With D. Ch1, 2sc, 1mdc, [ch2, sk 1 st, 1mdc, 1sc, 1mdc] rep across working 1sc instead of last mdc, turn.

Row 26: Rep Row 10 (*change to C*).

Row 27: With C. Ch1, 3sc, [1mdc, 3sc] rep across, turn.

Row 28: Rep Row 2 (*change to D*).

Row 29: With D. Ch1, 1sc, ch2, sk 1 st, 3sc, *[ch2, sk 1 st, 1sc] 2 times, ch2, sk 1 st, 3sc; rep from * to last 2 sts, ch2, sk 1 st, 1sc, turn.

Row 30: Ch1, 1sc, ch2, sk sp, 3sc, *[ch2, sk sp, 1sc] 2 times, ch2, sk sp, 3sc; rep from * to last sp and sc, ch2, sk sp, 1sc to end (*change to C*), turn.

Row 31: With C. Ch1, 1sc, 1mdc, 1sc, ch2, sk 1 st, 1sc, 1mdc, [ch2, sk 1 st, 1mdc, ch2, sk 1 st, 1mdc, 1sc, ch2, sk 1 st, 1sc, 1mdc] rep to last st, 1sc to end, turn.

Row 32: Ch1, 3sc, ch2, sk sp, 2sc, *ch2, sk sp, 1sc, [ch2, sk sp, 2sc] 2 times; rep from * to last st, 1sc to end (*change to D*), turn.

Row 33: With D. Ch1, 1sc, ch2, sk 1 st, 1sc, 1mdc, 1sc, [ch2, sk 1 st, 1mdc, 1sc, 1mdc,

ch2, sk 1 st, 1sc, 1mdc, 1sc] rep to last 2 sts, ch2, sk 1 st, 1sc to end, turn.

Row 34: Rep Row 8 (*change to C*).

Row 35: With C. Ch1, 1sc, 1mdc, ch2, sk 1 st, 1sc, ch2, sk 1 st, 1mdc, 1sc, [ch2, sk 1 st, 1sc, 1mdc, ch2, sk 1 st, 1sc, ch2, sk 1 st, 1mdc, 1sc] rep across, turn.

Row 36: Ch1, [2sc, ch2, sk sp, 1sc, ch2, sk sp, 2sc, ch2, sk sp] rep across omitting last ch2 (*change to D*), turn.

Row 37: With D. Ch1, 1sc, [ch2, sk 1 st, 1mdc] 2 times, *ch2, sk 1 st, 1sc, 1mdc, 1sc, [ch2, sk 1 st, 1mdc] 2 times; rep from * to last 2 sts, ch2, sk 1 st, 1sc to end, turn.

Row 38: Ch1, 1sc, [ch2, sk sp, 1sc] 2 times, *ch2, sk sp, 3sc, [ch2, sk sp, 1sc] 2 times; rep from * to last sp and sc, ch2, sk sp, 1sc to end (*change to C*), turn.

Row 39: With C. Ch1, 1sc, [1mdc, 1sc] 2 times, *1mdc, 3sc, [1mdc, 1sc] 2 times; rep from * to last sp and sc, 1mdc, 1sc to end, turn.

Row 40: Rep Row 2 (*change to D*), turn.

Rows 41–48: Rep Rows 21–28 (*change to A in last st of Row 48, cut C and D*).

Rows 49–50: With A. Rep Row 2 (*change to B in last st of Row 50*).
End of pattern repeat

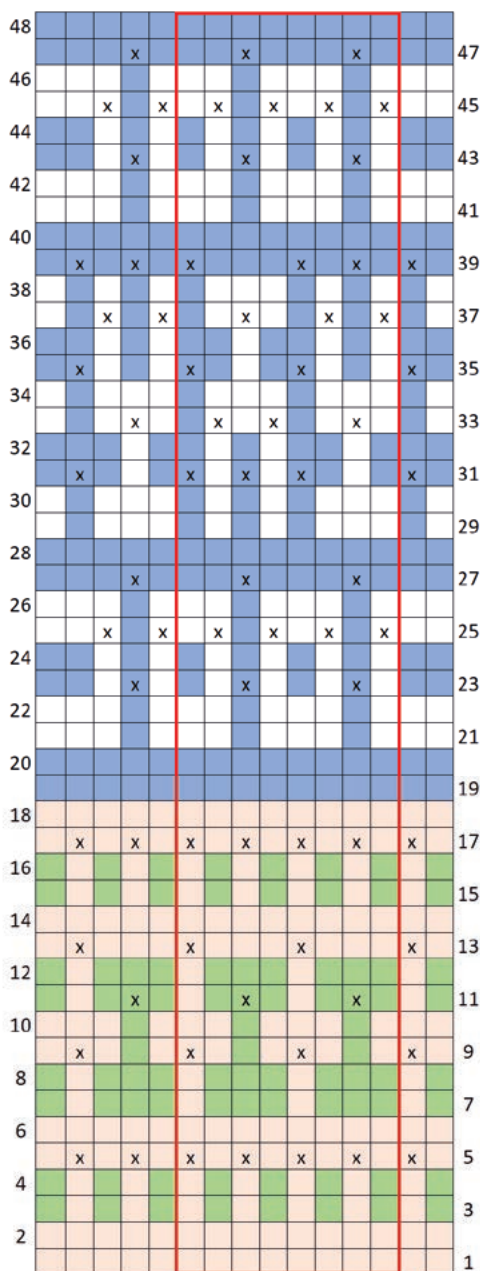
Rep Rows 3–50 eight more times.

Rep Rows 3–18 once more. Fasten off.

BORDER

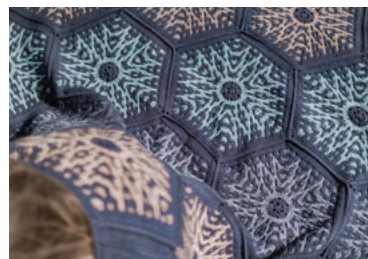
With RS facing you, attach Yarn C with ss in any corner. Work with ss evenly around the entire blanket, join with ss in first ss. Cont to work around the blanket, inserting hook under 2 lps of ss as folls: Ch2 (*does not count as a st*), *(1dc, ch2, 1dc) in corner ss, 1dc in each ss to next corner**, rep from * three more times, ss in first dc, fasten off.

With WS facing you, attach Yarn C in third lp of ss visible on WS in any corner and cont to work around the entire blanket, inserting hook into third lp of ss visible on WS. Rep between * and ** four times, join with ss in first dc, do not fasten off and cont working with ss through top lps of both dc rnds, joining them together. Then fasten off and weave in all ends.



- Yarn A: 24 Cota
- Yarn B: 63 Toronto
- Yarn C: 70 Cairo
- Yarn D: 25 Nice

QUIET MOMENTS BLANKET



MATERIALS

- Scheepjes Merino Soft*
50% superwash merino wool,
25% microfiber, 25% acrylic;
50g/105m)
- Yarn A:** 605 Hogarth x 22 balls
- Scheepjes Merino Soft Brush*
(50% superwash merino wool,
25% microfiber, 25% acrylic;
50g/105m)
- Yarn B:** 251 Avercamp x 4 balls
- Yarn C:** 252 Toorop x 4 balls
- Yarn D:** 254 Israëls x 4 balls
- 4.5mm crochet hook
- Yarn needle to weave in ends

GAUGE

After 6 rounds, hexagon measures approx. 10cm/4in across from side to side (through center), blocked

MEASUREMENTS

Each hexagon measures 36cm/14¼in across from corner to corner (through center), blocked. Finished blanket is approx. 130 x 145cm/51 x 57in

INSTRUCTIONS

HEXAGON

Make 6 each in B, C and D as CC.

Round 1 (RS): With Yarn A. Make a magic ring, ch2 (*does not count as a st here and throughout*), [1dc in magic ring, ch2] 6 times, join with ss in first dc – 6 dc, 6 ch2-sps.

Round 2: Ss in next sp, ch2, [(1dc, ch2, 1dc) in ch2-sp, 1dc in next st] 6 times, join with ss to beg dc – 3 dc per side.

Chart begins on next rnd; follow chart or written instructions. →

Round 3 (RS): Changing to CC, ss in corner ch2-sp, ch1 (*does not count as a st here and throughout*), *(1sc, ch2, 1sc) in corner ch2-sp, 1sc in each st to next corner; rep from * around, join with ss to beg sc, turn – 5 sc *per side*.

Round 4 (WS): Ch1, beg in joining ss (*here and each WS rnd*), [1sc in each st to next corner, ch2, sk corner ch2-sp] 6 times, join with ss to beg sc (*inserting hook from back to front here and each WS rnd*), turn – 5 sc *per side*.

Round 5 (RS): Changing to A, ss in corner ch2-sp, ch1, *(1sc, ch2, 1sc) in corner ch2-sp, 1sc, [ch2, sk 1 st, 1sc] 2 times; rep from * around, join with ss to beg sc, turn – 5 sc and 2 ch2-sps *per side*.

Round 6 (WS): Ch1, [2sc, ch2, sk sp, 1sc, ch2, sk sp, 2sc, ch2, sk corner ch2-sp] 6 times, join with ss to beg sc, turn – 5 sc and 2 ch2-sps *per side*.

Round 7: Changing to CC, ss in corner ch2-sp, ch1, *(1sc, ch2, 1sc) in corner ch2-sp, ch2, sk 1 st, 1sc, 1mdc, ch2, sk 1 st, 1mdc, 1sc, ch2, sk 1 st; rep from * around, join with ss to beg sc, turn – 4 sc, 2mdc and 3 ch2-sps *per side*.

Round 8: Ch1, *1sc, [ch2, sk sp, 2sc] 2 times, ch2, sk sp, 1sc, ch2, sk corner ch2-sp; rep from * around, join with ss to beg sc, turn – 6 sc and 3 ch2-sps *per side*.

Round 9: Changing to A, ss in corner ch2-sp, ch1, *(1sc, ch2, 1sc) in corner ch2-sp, ch2, sk 1 st, 1mdc, ch2, sk 1 st, 1sc, 1mdc, 1sc, ch2, sk 1 st, 1mdc, ch2, sk 1 st; rep from * around, join with ss to beg sc, turn – 4 sc, 3 mdc and 4 ch2-sps *per side*.

Round 10: Ch1, *1sc, ch2, sk sp, 1sc, ch2, sk sp, 3sc, [ch2, sk sp, 1sc] 2 times, ch2, sk corner ch2-sp; rep from * around, join with ss to beg sc, turn – 7 sc and 4 ch2-sps *per side*.

Round 11: Changing to CC, ss in corner ch2-sp, ch1, *(1sc, ch2, 1sc) in corner ch2-sp, ch2, sk 1 st, 1mdc, 1sc, 1mdc, ch2, sk 1 st, 1sc, ch2, sk 1 st, 1mdc, 1sc, 1mdc, ch2, sk 1 st; rep from * around, join with ss to beg sc, turn – 5 sc, 4 mdc and 4 ch2-sps *per side*.

Round 12: Ch1, *1sc, [ch2, sk sp, 3sc, ch2, sk sp, 1sc] 2 times, ch2, sk corner ch2-sp;

rep from * around, join with ss to beg sc, turn – 9 sc and 4 ch2-sps *per side*.

Round 13: Changing to A, ss in corner ch2-sp, ch1, *(1sc, ch2, 1sc) in corner ch2-sp, 1sc, 1mdc, ch2, sk 1 st, 1sc, ch2, sk 1 st, 1mdc, 1sc, 1mdc, ch2, sk 1 st, 1sc, ch2, sk 1 st, 1mdc, 1sc; rep from * around, join with ss to beg sc, turn – 7 sc, 4 mdc and 4 ch2-sps *per side*.

Round 14: Ch1, *3sc, [ch2, sk sp, 1sc, ch2, sk sp, 3sc] 2 times, ch2, sk corner ch2-sp; rep from * around, join with ss to beg sc, turn – 11 sc and 4 ch2-sps *per side*.

Round 15: Changing to CC, ss in corner ch2-sp, ch1, *(1sc, ch2, 1sc) in corner ch2-sp, 1sc, [ch2, sk 1 st, 1sc, 1mdc, ch2, sk 1 st, 1mdc, 1sc] 2 times, ch2, sk 1 st, 1sc; rep from * around, join with ss to beg sc, turn – 8 sc, 4 mdc and 5 ch2-sps *per side*.

Round 16: Ch1, *2sc, [ch2, sk sp, 2sc] 5 times, ch2, sk corner ch2-sp; rep from * around, join with ss to beg sc, turn – 12 sc and 5 ch2-sps *per side*.

Round 17: Changing to A, ss in corner ch2-sp, ch1, *(1sc, ch2, 1sc) in corner ch2-sp, 1sc, [ch2, sk 1 st, 1mdc, ch2, sk 1 st, 1sc, 1mdc, 1sc] 2 times, ch2, sk 1 st, 1mdc, ch2, sk 1 st, 1sc; rep from * around, join with ss to beg sc, turn – 8 sc, 5 mdc and 6 ch2-sps *per side*.

Round 18: Ch1, *2sc, [ch2, sk sp, 1sc, ch2, sk sp, 3sc] 2 times, ch2, sk sp, 1sc, ch2, sk sp, 2sc, ch2, sk corner ch2-sp; rep from * around, join with ss to beg sc, turn – 13 sc and 6 ch2-sps *per side*.

Round 19: Changing to CC, ss in corner ch2-sp, ch1, *(1sc, ch2, 1sc) in corner ch2-sp, ch3, sk 2 sts, [1mdc, 1sc, 1mdc, ch2, sk 1 st, 1sc, ch2, sk 1 st] 2 times, 1mdc, 1sc, 1mdc, ch3, sk 2 sts; rep from * around, join with ss to beg sc, turn – 7 sc, 6 mdc, 4 ch2-sps and 2 ch3-sps *per side*.

Round 20: Ch1, *1sc, ch3, sk sp, 3sc, [ch2, sk sp, 1sc, ch2, sk sp, 3sc] 2 times, ch3, sk sp, 1sc, ch2, sk corner ch2-sp; rep from * around, join with ss to beg sc, turn – 13 sc, 4 ch2-sps and 2 ch3-sps *per side*.

Round 21: Changing to A, ss in corner ch2-sp, ch1, *(1sc, ch2, 1sc) in corner ch2-sp, 1sc, 2mdc, 1sc, [ch2, sk 1 st, 1sc, 1mdc, 1sc, 1mdc, 1sc] 2 times, ch2, sk 1 st, 1sc, 2mdc, 1sc; rep from * around, join

with ss to beg sc, turn – 12 sc, 8 mdc and 3 ch2-sps *per side*.

Round 22: Ch1, *5sc, [ch2, sk sp, 5sc] 3 times, ch2, sk corner ch2-sp; rep from * around, join with ss to beg sc, turn – 20 sc and 3 ch2-sps *per side*.

Round 23: Changing to CC, ss in corner ch2-sp, ch1, *(1sc, ch2, 1sc) in corner ch2-sp, ch3, sk 2 sts, 1sc, [ch3, sk 2 sts, 1mdc, ch3, sk 2 sts, 1sc] 3 times, ch3, sk 2 sts; rep from * around, join with ss to beg sc, turn – 6 sc, 3 mdc and 8 ch3-sps *per side*.

Round 24: Ch1, *1sc, [ch3, sk sp, 1sc] 8 times, ch2, sk corner ch2-sp; rep from * around, join with ss to beg sc, turn – 9 sc and 8 ch3-sps *per side*.

Round 25: Changing to A (*cut CC*), ss in corner ch2-sp, ch1, *(1sc, ch2, 1sc) in corner ch2-sp, 1sc, [2mdc, 1sc] 8 times; rep from * around, join with ss to beg sc, turn – 11 sc and 16 mdc *per side*.

Round 26: Ch1, [27sc, ch2, sk corner ch2-sp] around, join with ss in first sc, turn – 27 sc *per side*.

Round 27: Ss in corner ch2-sp, ch2, *(1dc, ch2, 1dc) in corner ch2-sp, 1dc in each st to next corner; rep from * around, join with ss to beg dc, fasten off – 29 dc *per side*.

HALF HEXAGON

Make 2 in C and 2 in D as CC.

Note: Stitch counts are given for each of the three sides: 6/5/6 dc means 6 dc on the first side, 5 dc on the center side and 6 dc on the last side. Starting with Row 2, there is always a ch2-sp in each of the two corners.

Row 1 (RS): With Yarn A. Make a magic ring, ch2 (*does not count as a st here and throughout*), 7dc in ring, turn – 7 dc.

Row 2 (WS): Ch2, 2dc in first st, 2dc, ch2, 3dc in next st, ch2, 2dc, 2dc in last st, turn – 4/3/4 dc.

Row 3: Ch2, 2dc in first st, *1dc in each st to next corner ch2-sp, (1dc, ch2, 1dc) in corner ch2-sp; rep from * once more, 1dc in each st to last st, 2dc in last st, turn – 6/5/6 dc.

Row 4: Rep Row 3 (*change to CC*), turn – 8/7/8 dc.

Chart begins on next row; follow chart or written instructions.

Row 5 (RS): With CC. Ch1 (*does not count as a st here and throughout*), 2sc in first st, *1sc in each st to corner, (1sc, ch2, 1sc) in corner ch2-sp; rep from * once more, 7sc, 2sc in last st, turn – 10/9/10 sc.

Row 6 (WS): Ch1, [1sc in each st to corner, ch2, sk sp] 2 times, 10sc (*change to A*), turn – 10/9/10 sc.

Row 7: With A. Ch1, 2sc in first st, *1sc, [ch2, sk 1 st, 1sc] 4 times**, (1sc, ch2, 1sc) in corner ch2-sp; rep from * twice more ending last rep at **, 2sc in last st, turn – 8/7/8 sc; 4 ch2-sps per side.

Row 8: Ch1, 3sc, *[ch2, sk sp, 1sc] 4 times**, 1sc, ch2, sk corner ch2-sp, 2sc; rep from * twice more ending last rep at **, 2sc to end (*change to CC*), turn – 8/7/8 sc; 4 ch2-sps per side.

Row 9: With CC. Ch1, 2sc in first st, *ch3, sk 2 sts, 1mdc, 1sc, 1mdc, ch2, sk 1 st, 1mdc, 1sc, 1mdc, ch3, sk 2 sts**, (1sc, ch2, 1sc) in corner ch2-sp; rep from * twice more ending last rep at **, 2sc in last st, turn – 5/4/5 sc; 4 mdc, 1 ch2-sp and 2 ch3-sps per side.

Row 10: Ch1, 1sc, *1sc, ch3, sk sp, 3sc, ch2, sk sp, 3sc, ch3, sk sp**, 1sc, ch2, sk corner ch2-sp; rep from * twice more ending last rep at **, 2sc to end (*change to A*), turn – 9/8/9 sc; 1 ch2-sp and 2 ch3-sps per side.

Row 11: With A. Ch1, 2sc in first st, *1sc, 2mdc, 1sc, ch2, sk 1 st, 1sc, 1mdc, 1sc, ch2, sk 1 st, 1sc, 2mdc, 1sc**, (1sc, ch2, 1sc) in corner ch2-sp; rep from * twice more ending last rep at **, 2sc in last st, turn – 9/8/9 sc; 5 mdc and 2 ch2-sps per side.

Row 12: Ch1, 1sc, *5sc, ch2, sk sp, 3sc, ch2, sk sp, 5sc**, ch2, sk corner ch2-sp; rep from * twice more ending last rep at **, 1sc in last st (*change to CC*), turn – 14/13/14 sc; 2 ch2-sps per side.

Row 13: With CC. Ch1, 2sc in first st, *ch3, sk 2 sts, 1sc, ch3, sk 2 sts, 1mdc, ch2, sk 1 st, 1sc, ch2, sk 1 st, 1mdc, ch3, sk 2 sts, 1sc, ch3, sk 2 sts**, (1sc, ch2, 1sc) in corner ch2-sp; rep from * twice more ending last rep at **, 2sc in last st, turn – 6/5/6 sc; 2 mdc, 2 ch2-sps and 4 ch3-sps per side.

Row 14: Ch1, 1sc, *1sc, [ch3, sk sp, 1sc] 2 times, [ch2, sk sp, 1sc] 2 times, [ch3, sk sp, 1sc] 2 times**, ch2, sk corner ch2-sp; rep

from * twice more ending last rep at **, 1sc in last st (*change to A, cut CC*), turn – 8/7/8 sc; 2 ch2-sps and 4 ch3-sps per side.

Row 15: With A. Ch1, 2sc in first st, *[1sc, 2mdc] 2 times, [1sc, 1mdc] 2 times, [1sc, 2mdc] 2 times, 1sc**, (1sc, ch2, 1sc) in corner ch2-sp; rep from * twice more ending last rep at **, 2sc in last st, turn – 10/9/10 sc; 10 mdc per side.

Row 16: Ch1, [1sc in each st to corner, ch2, sk sp] 2 times, 20sc, turn – 20/19/20 sc.

Rows 17–21: Rep Row 3 – 30/29/30 dc. Fasten off. Block all motifs to measurements before joining.

FINISHING

Starting with 4 hexagons along the top row, arrange hexagons and half hexagons according to schematic. Arrange all the motifs according to your preference. All motifs are joined with sc on RS.

After all motifs are joined tog, work a border around the entire blanket as folls:

Round 1: With RS facing you, attach Yarn A with ss in any ch2-sp in a blanket corner, ch1 (*does not count as a st*), (1sc, ch2, 1sc) in same ch2-sp, *work with sc evenly along all of the blanket's sides and, at the same time, working (1sc, ch2, 1sc) in ch2-sp in every outer zigzag corner and 1sc3tog in every inner zigzag corner, join

with ss in first sc**, ss in ch2-sp, turn.

Round 2 (WS): Ch1, work as for Round 1 between * and **. Fasten off.

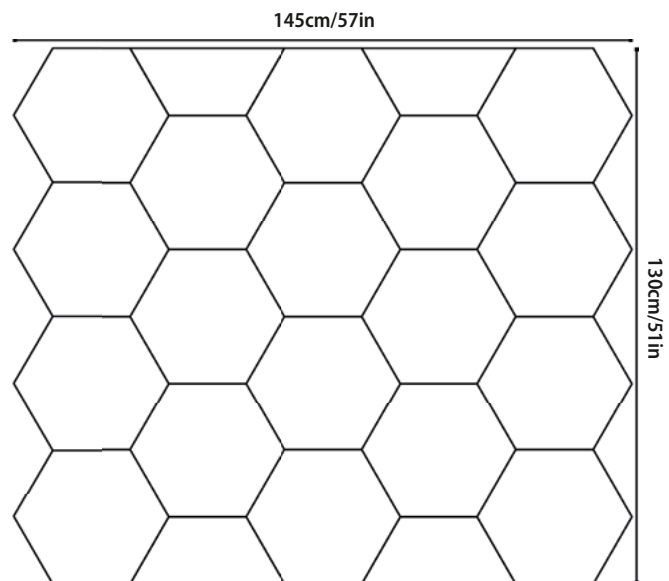
Weave in ends. Block blanket to measurements.

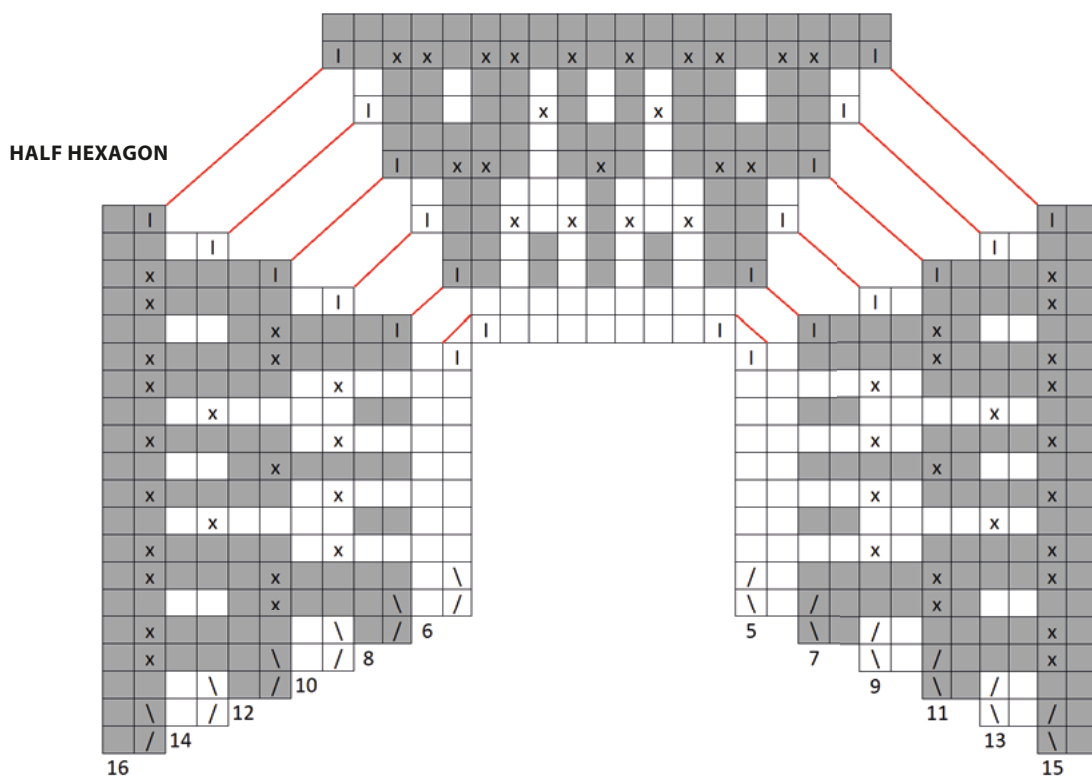
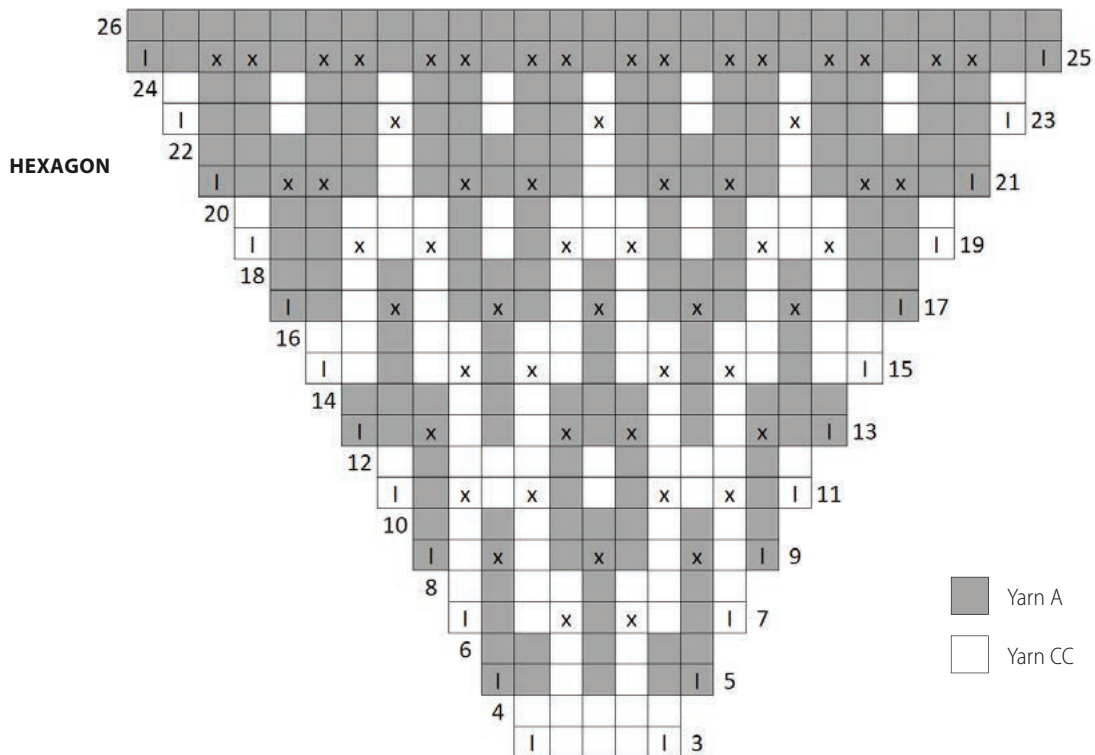
HOW TO READ THE CHART FOR THE HEXAGON

The chart shows one of the six sides of the hexagon. The squares on odd rounds (5, 7, 9, etc.) marked with **I** indicate sc worked into the corner ch2-sps. Refer to the pattern for detailed instructions on how the corners are worked.

HOW TO READ THE CHART FOR THE HALF HEXAGON

The chart shows all three sides of the half hexagon. Odd rows (5, 7, 9, etc.) are read counterclockwise and even rows (6, 8, 10, etc.) are read clockwise. The hanging squares at the beginning and end of every odd row marked with **I** represent increases: Two sc worked in the same (first or last) st of previous row. Work corner ch2 over gap on each side of center chart. The squares on odd rows marked with **I** on both sides of this gap indicate sc worked into the corner ch2-sps. Refer to the pattern for detailed instructions on how the corners are worked.





SEAWEED CHAIR PAD



MATERIALS

- ☀ *Scheepjes Mighty*
(32% jute, 68% cotton; 50g/80m)
- Yarn A:** 756 River (or 757 Ocean)
x 1 ball
- Yarn B:** 751 Stone (or 760 Desert)
x 2 balls
- Yarn C:** 752 Oak x 1 ball
- ☀ 4mm crochet hook
- ☀ Yarn needle to weave in ends

GAUGE

Mosaic top: After 10 rounds, circle measures approx. 10cm/4in across with mosaic pattern, blocked

Plain bottom: After 4½ rounds, circle measures approx. 10cm/4in across with dc, blocked

MEASUREMENTS

Approx. 36cm/14in across, blocked

PATTERN NOTES

Seaweed Chair Pad consists of a mosaic top and a plain bottom which are joined together with sc.

First st of every round is worked *in next st of previous round*, unless otherwise stated in the pattern. For easy counting it is recommended that you mark the first and the last st/sp of every round and move the marker up to the next round as you progress.

Color is changed in the first ch1 of the round. Yarn is not cut, it is carried up to the next round on the wrong side. Because this pattern uses almost all the yarn listed, it is recommended that you crochet tightly; or order more yarn to be on the safe side.

INSTRUCTIONS

MOSAIC TOP

Round 1 (RS): With Yarn A. Make a magic ring, ch1 (*does not count as a st here and throughout*), 6sc into ring, ss to beg sc – 6 sc.

Round 2: Ch1, 2sc in same st as join, 2sc in each st around, ss to beg sc – 12 sc.

Round 3: Ch1, 2sc in same st as join, ch2, sk 1 st, [2sc in next st, ch2, sk 1 st] 5 times, ss to beg sc, turn – 12 sc, 6 ch2-sps.

Round 4 (WS): Ch1, [ch2, sk sp, 1sc, 2sc in next st] rep around, ss to beg sp (*inserting hook from back to front here and each WS rnd*), turn – 18 sc, 6 ch2-sps.

Round 5 (RS): Changing to B, ch1, [1sc, ch2, sk 1 st, 1sc, 1mdc] rep around, ss to beg sc, turn – 12 sc, 6 mdc, 6 ch2-sps.

Round 6 (WS): Ch1, [2sc, ch3, sk sp, 1sc] rep around, ss to beg sc, turn – 18 sc, 6 ch3-sps.

Round 7: Changing to A, ch1, [ch2, sk 1 st, 3mdc in next st, ch2, sk 1 st, 1sc] rep around, ss to beg sp, turn – 6 sc, 18 mdc, 12 ch2-sps.

Round 8: Ch1, [1sc, ch2, sk sp, 3sc, ch2, sk sp] rep around, ss to beg sc, turn – 24 sc, 12 ch2-sps.

Round 9: Changing to B, ch1, [1mdc, 2sc in next st, ch2, sk 1 st, 2sc in next st, 1mdc, ch2, sk 1 st] rep around, ss to beg mdc, turn – 24 sc, 12 mdc, 12 ch2-sps.

Round 10: Ch1, [ch2, sk sp, 3sc] rep around, ss to beg sp, turn – 36 sc, 12 ch2-sps.

Round 11: Changing to A, ch1, [2sc, ch2, sk 1 st, 1mdc, ch2, sk 1 st, 2sc, 3mdc in next st] rep around, ss to beg sc, turn – 24 sc, 24 mdc, 12 ch2-sps.

Round 12: Ch1, [5sc, ch2, sk sp, 1sc, ch2, sk sp, 2sc] rep around, ss to beg sc, turn – 48 sc, 12 ch2-sps.

Round 13: Changing to B, ch1, *1sc, ch2, sk 1 st, 1mdc, 1sc, 1mdc, [ch2, sk 1 st, 1sc] 2 times, ch2, sk 1 st; rep from * around, ss to beg sc, turn – 24 sc, 12 mdc, 24 ch2-sps.

Round 14: Ch1, *[ch2, sk sp, 1sc] 2 times, ch2, sk sp, 2sc in next st, 1sc, 2sc in next st, ch2, sk sp, 1sc; rep from * around, ss to beg sp, turn – 48 sc, 24 ch2-sps.

Round 15: Changing to A, ch1, *1sc, 2mdc in next st, 2sc, ch2, sk 1 st, 2sc, 2mdc in next st, [1sc, 1mdc] 2 times; rep from * around, ss to beg sc, turn – 42 sc, 36 mdc, 6 ch2-sps.

Round 16: Ch1, [8sc, ch2, sk sp, 5sc] rep around, ss to beg sc, turn – 78 sc, 6 ch2-sps.

Round 17: *ss in next st*, changing to B, ch1, *1sc, ch2, sk 1 st, 2sc in next st, ch2, sk 1 st, 1mdc, ch2, sk 1 st, 2sc in next st, [ch2, sk 1 st, 1sc] 3 times, ch2, sk 1 st; rep from * around, ss to beg sc, turn – 48 sc, 6 mdc, 42 ch2-sps.

Round 18: Ch1, *[ch2, sk sp, 1sc] 3 times, [ch2, sk sp, 2sc, ch2, sk sp, 1sc] 2 times; rep from * around, ss to beg sp, turn – 54 sc, 42 ch2-sps.

Round 19: Changing to A, ch1, *1sc, 2mdc in next st, 2sc, 1mdc, 1sc, 1mdc, 2sc, 2mdc in next st, [1sc, 1mdc] 3 times; rep from * around, ss to beg sc, turn – 54 sc, 54 mdc.

Round 20: Ch1, 1sc in each st around, ss to beg sc, turn – 108 sc.

Round 21: Changing to C, ch1 (*cut B leaving approx. 20cm/8in tail for safe weaving*), [6sc, 2sc in next st, 11sc] rep around, ss to beg sc, turn – 114 sc.

Round 22: Ch1, [2sc, 2sc in next st, 16sc] rep around, ss to beg sc, turn – 120 sc.

Round 23: Cont with C. Ch1, [3sc, ch2, sk 1 st] rep around, ss to beg sc, turn – 90 sc, 30 ch2-sps.

Round 24: Ch1, [ch2, sk sp, 3sc] rep around, ss to beg sp, turn – 90 sc, 30 ch2-sps.

Round 25: Changing to A, ch1, [1sc, ch2, sk 1 st, 1sc, 1mdc] rep around, ss to beg sc, turn – 60 sc, 30 mdc, 30 ch2-sps.

Round 26: Ch1, [2sc, ch3, sk sp, 1sc] rep around, ss to beg sc, turn – 90 sc, 30 ch3-sps.

Round 27: Changing to C, ch1, [ch2, sk 1 st, 1mdc, ch2, sk 1 st, 1sc, ch2, sk 1 st, 1mdc, ch2, sk 1 st, 2sc in next st] rep around, ss to beg sp, turn – 45 sc, 30 mdc, 60 ch2-sps.

Round 28: Ch1, *2sc, [ch2, sk sp, 1sc] 3 times, ch2, sk sp; rep from * around, ss to beg sc, turn – 75 sc, 60 ch2-sps.



Round 29: Changing to A, ch1, [1mdc, 1sc, 1mdc, ch2, sk 1 st, 1mdc, 1sc, 1mdc, ch3, sk 2 sts] rep around, ss to beg mdc, turn – 30 sc, 60 mdc, 30 ch-sps.

Round 30: Ch1, [ch3, sk sp, 3sc, ch2, sk sp, 3sc] rep around, ss to beg sp, turn – 90 sts, 30 ch-sps.

Round 31: Changing to C, ch1, [1sc, ch2, sk 1 st, 1sc, 2mdc in next st, 1sc, ch2, sk 1 st, 1sc, 2mdc] rep around, ss to beg sc, turn – 60 sc, 60 mdc, 30 ch2-sps.

Round 32: Ch1, [3sc, ch2, sk sp, 1sc] rep around, ss to beg sc, turn – 120 sc, 30 ch2-sps.

Round 33: *Ss in next st*, changing to A, ch1, [1mdc, ch6, sk 4 sts] rep around, ss to beg mdc, turn – 30 mdc, 30 ch6-sps.

Round 34: Ch1, [ch6, sk sp, 1sc] rep around, ss to beg sp, turn – 30 sc, 30 ch6-sps.

Round 35: Changing to C, ch1 (*cut A leaving approx. 20cm/8in tail for safe weaving*), [1sc, 4mdc, 1sc, 2mdc, 2mdc in next st, 1mdc] rep around, ss to beg sc, turn – 30 sc, 135 mdc.

Round 36: Ch1, [7sc, 2sc in next st, 3sc] rep around, ss to beg sc, fasten off – 180 sc.

PLAIN BOTTOM

Bottom part is worked on RS in a continuous spiral without joining. For easy counting, mark last st of every rnd and move marker up to next rnd as you progress.

Round 1 (RS): With Yarn B. Make a magic ring, (3sc, 3hdc, 6dc) into ring, do not join (*here and throughout*) – 12 sts.

Round 2: [2hdc in next st] 2 times, [2dc in next st] 10 times – 24 sts.

Round 3: [1dc, 2dc in next st] 12 times – 36 dc.

Round 4: [1dc, 2dc in next st, 1dc] 12 times – 48 dc.

Round 5: [3dc, 2dc in next st] 12 times – 60 dc.

Round 6: [2dc, 2dc in next st, 2dc] 12 times – 72 dc.

Round 7: [5dc, 2dc in next st] 12 times – 84 dc.

Round 8: [3dc, 2dc in next st, 3dc] 12 times – 96 dc.

Round 9: [7dc, 2dc in next st] 12 times – 108 dc.

Round 10: [4dc, 2dc in next st, 4dc] 12 times – 120 dc.

Round 11: [9dc, 2dc in next st] 12 times – 132 dc.

Round 12: [5dc, 2dc in next st, 5dc] 12 times – 144 dc.

Round 13: [11dc, 2dc in next st] 12 times – 156 dc.

Round 14: [6dc, 2dc in next st, 6dc] 12 times – 168 dc.

Round 15: [13dc, 2dc in next st] 12 times, 2dc, 3hdc, 3sc, ss in next st, do not fasten off – 188 sts (180 sts available for joining).

JOINING

Place mosaic top and plain bottom together with WS facing, drop lp off hook, insert hook in back lp of any st on last rnd of top, put lp back on hook and pull it through top, ch1. Insert hook in back lp of same st of top and both lps of next st after ss of bottom, yo, draw up a lp and complete sc. Cont joining both parts working with sc through BL of top and both lps of bottom. When joining is complete, ss to beg sc and fasten off.

ZIGZAG TOP



MATERIALS

☀ *Scheepjes Woolly Whirl* (70% cotton, 30% wool; 215g/1000m)

Yarn A: 477 Bubble Gum Centre x 1 (1, 1, 2, 2, 2, 2) balls

☀ *Scheepjes Woolly Whirllette* (70% cotton, 30% wool; 100g/450m)

Yarn B: 573 Bubble Gum x 1 (1, 1, 2, 2, 2, 3) balls

☀ 3mm and 2.5mm crochet hooks

☀ Yarn needle to weave in ends

GAUGE

20 sts and 21 rows to measure 10 x 10cm/4 x 4in over gauge stitch pattern (see below) using 3mm hook, blocked

Stitch pattern for gauge

Row 1: Ch30, 1sc in second ch from hook, [1dc, 1sc] to end, turn – 29 sts.

Row 2: Ch2 (*does not count as a st*), [1dc, 1sc] to last st, 1dc in last st, turn.

Row 3: Ch1 (*does not count as a st*), [1sc, 1dc] to last st, 1sc in last st, turn.

Rows 4–21: Rep Rows 2–3.

SIZES

S (M: L1: L2: XL: 2X: 3X)

To fit actual bust: 81/86 (91/97: 102: 107: 112/117: 122/127: 132/137)cm/ 32/34 (36/38: 40: 42: 44/46: 48/50: 52/54)in

Finished bust: 93 (101: 106: 114: 121: 131: 141)cm/36½ (39¾: 41¾: 44¾: 47¾: 51½: 55½)in

PATTERN NOTES

This top is designed to fit with 5–10cm/2–4in of positive ease at the bust. It is worked seamlessly from the top down. First the yoke is worked in rounds to sleeve separation, then the lower body is worked in rounds to the bottom, followed by the sleeves worked top down. The length of both the body and the sleeves is easily adjustable.

For sizes L2, XL, 2X and 3X use both Whirl cakes at the same time, alternating them after every two rounds for a continuous gradual color change. The color is changed in the ch1 at the beginning of the round, floats of yarn should stay on WS.

INSTRUCTIONS

YOKE

Begin with Yarn A and 3mm hook. Ch100 (106, 110, 110, 114, 120, 120) *loosely*, ss to beg ch (*be careful not to twist*).

Round 1 (RS): Ch1 (*does not count as a st here and throughout*), 1sc in same ch as join, 1sc in each ch around, ss to beg sc, do not turn.

Round 2: Cont on RS. Ch1, 1sc in same st as join, 1dc, [1sc, 1dc] rep around (*pm in last st – here and for all rem rnds*), ss to beg sc, turn.

Round 3 (WS) – inc:

S: Ch1, beg in marked st (*here and for all rem rnds*), *[1sc, 1dc] 12 times, (1sc, 1dc, 1sc) in next st, [1dc, 1sc] 12 times, (1dc, 1sc, 1dc) in next st; rep from * once more (*pm in last st*), ss to beg sc, turn – 8 sts *inc'd*; 108 sts.

M: Ch1, beg in marked st (*here and for all rem rnds*), *[1sc, 1dc] 9 times, 1sc, (1dc, 1sc, 1dc) in next st; rep from * four more times, [1sc, 1dc] 3 times (*pm in last st*), ss to beg sc, turn – 10 sts *inc'd*; 116 sts.

L1: Ch1, beg in marked st (*here and for all rem rnds*), *[1sc, 1dc] 10 times, 1sc, (1dc, 1sc, 1dc) in next st; rep from * four more times (*pm in last st*), ss to beg sc, turn – 10 sts *inc'd*; 120 sts.

L2: Ch1, beg in marked st (*here and for all rem rnds*), *[1sc, 1dc] 5 times, 1sc, (1dc, 1sc, 1dc) in next st; rep from * eight more times, 1sc, 1dc (*pm*), ss to beg sc, turn – 18 sts *inc'd*; 128 sts.

XL: Ch1, beg in marked st (*here and for all rem rnds*), *[1sc, 1dc] 5 times, 1sc, (1dc, 1sc, 1dc) in next st; rep from * eight more times, [1sc, 1dc] 3 times (*pm in last st*), ss to beg sc, turn – 18 sts *inc'd*; 132 sts.

2X: Ch1, beg in marked st (*here and for all rem rnds*), *[1sc, 1dc] 5 times, 1sc, (1dc, 1sc, 1dc) in next st; rep from * nine more times (*pm in last st*), ss to beg sc, turn – 20 sts *inc'd*; 140 sts.

3X: Ch1, beg in marked st (*here and for all rem rnds*), *[1sc, 1dc] 3 times, 1sc, (1dc, 1sc, 1dc) in next st, [1sc, 1dc] 4 times, (1sc, 1dc, 1sc) in next st; rep from * six more times, 1dc (*pm*), ss to beg sc, turn – 28 sts *inc'd*; 148 sts.

Round 4 (RS) for sizes L2, XL, 2X, 3X

only: Ch1, [1sc, 1dc] rep around, ss to beg sc, turn.

Rep Round 4: 0 (0, 0, 1, 3, 3, 3) more times alternating RS and WS.

Next round (RS) – for all sizes; inc:

Ch1, *1sc, 1dc, 1sc, (1dc, 1sc, 1dc) in next st; rep from * around, ss to beg st, turn – 162 (174, 180, 192, 198, 210, 222) sts.

Next round (WS): Ch1, [1sc, 1dc] rep around, ss to beg sc, turn.

COLORWORK

Gauge check: The gauge for height for mosaic patt is 30 rows for 10cm/4in.

Chart begins on next rnd; follow chart or written instructions.

Round 1 (RS): Changing to B, ch1, [5sc, ch1, sk 1 st] rep around, ss to beg sc, turn.

Round 2 (WS): Ch1, [ch1, sk sp, 5sc] rep around, ss to beg sp (*inserting hook from back to front here and each WS rnd*), turn.

Round 3 (inc): Changing to A, ch1, *[ch1, sk 1 st, 2sc in next st] 2 times, ch1, sk 1 st, 1mdc; rep from * around, ss to beg sp, turn.

Round 4: Ch1, *1sc, [ch1, sk sp, 2sc] 2 times, ch1, sk sp; rep from * around, ss to beg sc, turn.

Round 5: Changing to B, ch1, [1mdc, ch1, sk 1 st, 1sc, 1mdc, 1sc, ch1, sk 1 st, 1mdc, 1sc] rep around, ss to beg mdc, turn.

Round 6: Ch1, 2sc, [ch1, sk sp, 3sc] rep to last sp, ch1, sk sp, 1sc, ss to beg sc, turn.

Round 7: Changing to A, ch1, [1sc, 1mdc, ch1, sk 1 st, 1sc, ch1, sk 1 st, 1mdc, 1sc, ch1, sk 1 st] rep around, ss to beg sc, turn.

Round 8: Ch1, [ch1, sk sp, 2sc, ch1, sk sp, 1sc, ch1, sk sp, 2sc] rep around, ss to beg sp, turn.

Round 9: Changing to B, ch1, [ch1, sk 1 st, 1sc, 1mdc, ch1, sk 1 st, 1mdc, 1sc, ch1, sk 1 st, 1mdc] rep around, ss to beg sp, turn.

Round 10: Ch1, *1sc, [ch1, sk sp, 2sc] 2 times, ch1, sk sp; rep from * around, ss to beg sc, turn.

Round 11: Changing to A, ch1.

Rep Round 5.

Round 12: Rep Round 6.

Round 13: Changing to B, ch1, [1sc, 1mdc, ch2, sk 1 st, 1sc, ch2, sk 1 st, 1mdc, 1sc, ch2, sk 1 st] rep around, ss to beg sc, turn.

Round 14: Ch1, [ch2, sk sp, 2sc, ch2, sk sp, 1sc, ch2, sk sp, 2sc] rep around, ss to beg sp, turn.

Round 15: Changing to A, ch1, [ch2, sk 1 st, 1sc, 1mdc, ch2, sk 1 st, 1mdc, 1sc, ch2, sk 1 st, 1mdc] rep around, ss to beg sp, turn.

Round 16: Ch1, *1sc, [ch2, sk sp, 2sc] 2 times, ch2, sk sp; rep from * around, ss to beg sc, turn.

Rounds 17–18: Rep Rounds 5–6 replacing all ch1 with ch2.

Round 19 (inc): Changing to A, ch1, [1sc, 2mdc in next st, ch1, sk 1 st, 1sc, ch1, sk 1 st, 2mdc in next st, 1sc, ch1, sk 1 st] rep around, ss to beg sc, turn.

Round 20: Ch1, [ch1, sk sp, 3sc, ch1, sk sp, 1sc, ch1, sk sp, 3sc] rep around, ss to beg sp, turn.

Round 21: Changing to B, ch1, [ch2, sk 2 sts, 1sc, 1mdc, ch2, sk 1 st, 1mdc, 1sc, ch2, sk 2 sts, 1mdc] rep around, ss to beg sp, turn.

Round 22: Ch1, *1sc, [ch2, sk sp, 2sc] 2 times, ch2, sk sp; rep from * around, ss to beg sc, turn.

Round 23: Changing to A, ch1, [2mdc, ch1, sk 1 st, 1sc, 1mdc, 1sc, ch1, sk 1 st, 2mdc, 1sc] rep around, ss to beg mdc, turn.

→

Round 24: Ch1, *[3sc, ch1, sk sp] 2 times, 2sc; rep from * around, ss to beg sc, turn.

Round 25: *Ss in next st*, changing to B, ch1, [1sc, 1mdc, ch2, sk 1 st, 1sc, ch2, sk 1 st, 1mdc, 1sc, ch4, sk 3 sts] rep around, ss to beg sc, turn.

Round 26: Ch1, [ch4, sk sp, 2sc, ch2, sk sp, 1sc, ch2, sk sp, 2sc] rep around, ss to beg sp, turn.

Round 27: Changing to A, ch1, [ch2, sk 1 st, 1sc, 1mdc, ch2, sk 1 st, 1mdc, 1sc, ch2, sk 1 st, 3mdc] rep around, ss to beg sp, turn.

Round 28: Ch1, *3sc, [ch2, sk sp, 2sc] 2 times, ch2, sk sp; rep from * around, ss to beg sc, turn.

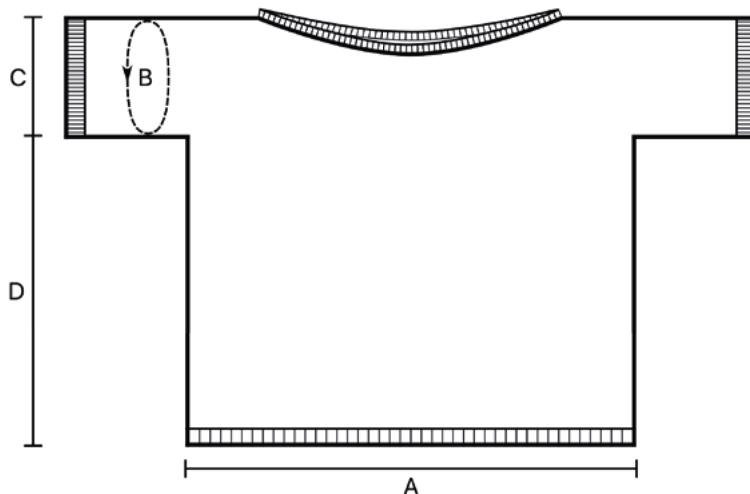
Round 29: Changing to B, ch1, [1mdc, ch2, sk 1 st, 1sc, 1mdc, 1sc, ch2, sk 1 st, 1mdc, 1sc, ch2, sk 1 st, 1sc] rep around, ss to beg mdc, turn.

Round 30: Ch1, [1sc, ch2, sk sp, 2sc, ch2, sk sp, 3sc, ch2, sk sp, 1sc] rep around, ss to beg sc, turn.

Round 31: Changing to A, ch1, [1sc, 1mdc, ch2, sk 1 st, 1sc, ch2, sk 1 st, 1mdc, 1sc, ch2, sk 1 st, 1mdc, ch2, sk 1 st] rep around, ss to beg sc, turn.

Round 32: Ch1, [ch2, sk sp, 1sc, ch2, sk sp, 2sc] rep around, ss to beg sp, turn.

Round 33: Changing to B, ch1, [ch2, sk 1 st, 1sc, 1mdc, ch2, sk 1 st, 1mdc, 1sc, ch2, sk 1 st, 1mdc, 1sc, 1mdc] rep around, ss to beg sp, turn.



Round 34: Rep Round 28.

Round 35: Changing to A, ch1. Rep Round 29.

Round 36: Rep Round 30.

Round 37: Changing to B, ch1, [1sc, 1mdc, ch4, sk 3 sts, 1mdc, 1sc, ch2, sk 1 st, 1mdc, ch2, sk 1 st] rep around, ss to beg sc, turn.

Round 38: Ch1, [ch2, sk sp, 1sc, ch2, sk sp, 2sc, ch4, sk sp, 2sc] rep around, ss to beg sp, turn.

Round 39: Changing to A, ch1, [ch2, sk 1 st, 1sc, 3mdc, 1sc, ch2, sk 1 st, 1mdc, 1sc, 1mdc] rep around, ss to beg sp, turn.

Round 40: Ch1, [3sc, ch2, sk sp, 5sc, ch2, sk sp] rep around, ss to beg sc, turn.

Round 41: Changing to B, ch1, [1mdc, ch6, sk 5 sts, 1mdc, 1sc, ch2, sk 1 st, 1sc] rep around, ss to beg mdc, turn.

Round 42: Ch1, [1sc, ch2, sk sp, 2sc, ch6, sk sp, 1sc] rep around, ss to beg sc, turn.

Round 43: Changing to A, ch1, [1sc, 5mdc, 1sc, ch2, sk 1 st, 1mdc, ch2, sk 1 st] rep around, ss to beg sc, turn.

Round 44: Ch1, [ch2, sk sp, 1sc, ch2, sk sp, 7sc] rep around, ss to beg sp, turn.

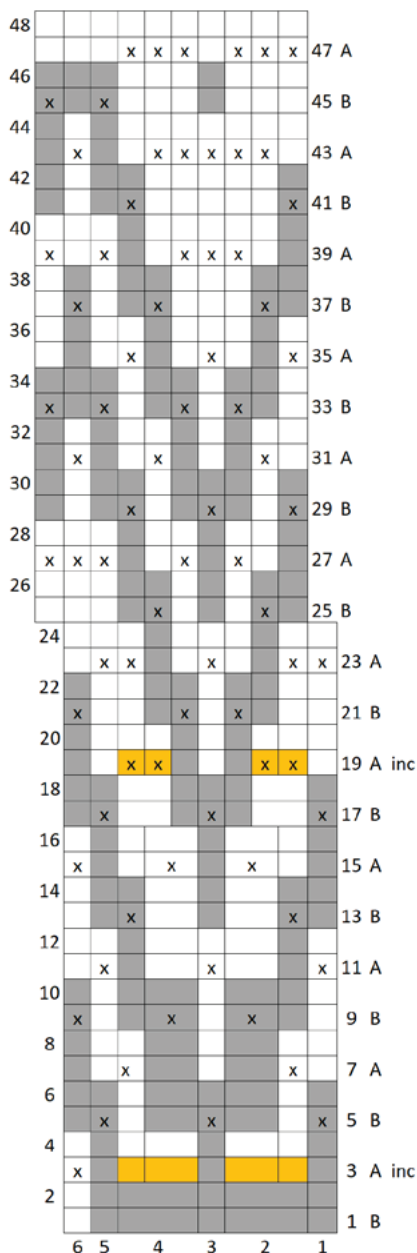
Round 45: Changing to B, ch1, [ch4, sk 3 sts, 1sc, ch4, sk 3 sts, 1mdc, 1sc, 1mdc] rep around, ss to beg sp, turn.



MEASUREMENTS TABLE, CM

	S	M	L1	L2	XL	2X	3X
A, WIDTH	46.5	50.5	53	57	60.5	65.5	70.5
B, SLEEVE CIRCUMFERENCE	29	30	32	33	36	38	42
C, FRONT NECK TO UNDERARM	19	20	21	22.5	23.5	25	26
D, LENGTH FROM UNDERARM	32	32	32	32	32	32	32

MEASUREMENTS TABLE, INCHES

	S	M	L1	L2	XL	2X	3X
A, WIDTH	18¾	20	20¾	22½	23¾	25¾	27¾
B, SLEEVE CIRCUMFERENCE	11½	11¾	12½	13	14¼	15	16½
C, FRONT NECK TO UNDERARM	7½	7¾	8¼	8¾	9¼	9¾	10¼
D, LENGTH FROM UNDERARM	12½	12½	12½	12½	12½	12½	12½



 Yarn A: 477 Bubble Gum Centre
 Yarn B: 573 Bubble Gum

Round 46: Ch1, [3sc, ch4, sk sp, 1sc, ch4, sk sp] rep around, ss to beg sc, turn.

Round 47: Changing to A, ch1 (*cut B*), [3mdc, 1sc, 3mdc, 3sc] rep around, ss to beg mdc, turn.

Round 48: Ch1, sc in each st around, ss to beg sc, turn – 270 (290, 300, 320, 330, 350, 370) sts.

Round 49: Ch1, [1sc, 1dc] rep around, ss to beg sc, turn.

Rep Round 49 until yoke measures approx. 19 (20: 21: 22.5: 23.5: 25: 26)cm/ 7½ (7¾: 8¼: 8¾: 9¼: 9¾: 10¼)in down from neck opening. Last rnd worked should be a WS rnd.

DIVIDING FOR BODY AND SLEEVES

Working on RS, ch1, [1sc, 1dc] 20 (22, 23, 25, 26, 28, 29) times, ch8 (8, 10, 10, 14, 16, 20), sk 50 (52, 54, 56, 58, 60, 64) sts for sleeve, [1sc, 1dc] 43 (47, 49, 53, 54, 58, 61) times, ch8 (8, 10, 10, 14, 16, 20), sk 50 (52, 54, 56, 58, 60, 64) sts for sleeve, [1sc, 1dc] rep to end, turn – 186 (202, 212, 228, 242, 262, 282) sts for body counting 2 chain-bridges.

LOWER BODY

Round 1 (WS): Ch1, [1sc, 1dc] rep around, ss to beg sc, turn.

Rep Round 1, alternating RS and WS until body measures approx. 30cm/11¾in from underarm. Last rnd worked should be a WS rnd.

RIBBING

Change to 2.5mm hook. Begin on RS.

Row 1: Ch7, 1sc in second ch from hook, 1sc in next 5 ch, 1ss in next st on sweater's body, 1ss in next st, turn.

Row 2: Ch1 (*does not count as a st*), 1sc blo in each of next 6 sc of ribbing, turn.

Row 3: Ch1, 1sc blo in each of next 6 sc of ribbing, 1ss in next st on sweater's body, 1ss in next st, turn.

Rep Rows 2–3 around the bottom of the sweater until all sts of the lower body are occupied with ribbing. Fasten off, leaving approx. 20cm/8in tail and sew together short sides of the ribbing using yarn needle.

SLEEVES (both alike)

Round 1: With RS facing, attach Yarn B in approx. central st of underarm. Ch1, 1sc in same st as join, 1sc in each st around armhole working sc2tog in the corners to close the holes, ss to beg sc – 58 (60, 64, 66, 72, 76, 84) sts.
Work ribbing as for the lower body.

NECK OPENING

With RS facing, attach Yarn B in a st of neck opening at approx. center back. With 2.5mm hook, ch1, 1sc in same st as join, 1sc in each st around neck opening, ss to beg sc, do not turn. Work ribbing as for the lower body.

FINISHING

Weave in ends. Block top to measurements.

HOW TO READ THE CHART

The chart for this pattern shows one mosaic repeat. Each square and rectangle represents one stitch. The rectangles and squares marked with orange indicate an increase: Two stitches worked in one stitch of the previous round. A letter (A or B) at the beginning of each odd round indicates the color used for two rounds.

The number of chains for skipped sts changes throughout the yoke. Refer to the pattern instructions for every round to see how many chains should be made.

FROM SEA TO SEA BLANKET



MATERIALS

- ☀ *Scheepjes Whirl*
(60% cotton, 40% acrylic;
215g/1000m)
- Yarn A:** 766 Mid Morning Mochar'oo
x 2 cakes
- Yarn B:** 755 Blueberry Bambam
x 2 cakes
- ☀ 3.5mm crochet hook
- ☀ Yarn needle to weave in ends

GAUGE

20 sts and 28 rows to measure
10 x 10cm/4 x 4in over mosaic pattern
using 3.5mm hook, blocked

MEASUREMENTS

Approx. 115 x 140cm/45 x 55in, blocked

PATTERN NOTES

This blanket is worked with four Whirl cakes at the same time for a soft color fade – two for Yarn A and two for Yarn B. Both cakes for each color (A or B) should be started with the same tail. And Yarns A and B should be contrasting. If you are using the same colors as per the pattern, begin with outside tails for both colors. You will have a light tail for Yarn A and a dark tail for Yarn B.

INSTRUCTIONS

*Stitch patt is a multiple of 12 sts + 3 sts
(19 repeats)*

Row 1 (RS): With Yarn A (*first cake*).

Ch232, 1sc in second ch from hook, 1sc in each ch across, turn – 231 sc.

Row 2 (WS): Ch1 (*does not count as a st here and throughout*), 1sc in each st across (*change to first cake of Yarn B in last st, do not cut Yarn A*), turn.

Row 3: With B (*first cake*). Ch1, 1sc, [ch2, sk 1 st, 3sc] rep to last 2 sts, ch2, sk 1 st, 1sc to end, turn.

Row 4: Ch1, 1sc, [ch2, sk sp, 3sc] rep to last sp and sc, ch2, sk sp, 1sc to end (*change to second cake of Yarn A*), turn.

Pattern repeat

Row 5: With A (*second cake*). Ch1, 1sc, 1mdc, [ch2, sk 1 st, 2sc, 1mdc, ch2, sk 1 st, 1sc, ch2, sk 1 st, 1mdc, 2sc, ch2, sk 1 st, 1mdc] rep to last st, 1sc to end, turn.

Row 6: Ch1, 2sc, [ch2, sk sp, 3sc, ch2, sk sp, 1sc] rep to last st, 1sc to end (*change to second cake of Yarn B*), turn.

Row 7: With B (*second cake*). Ch1, 2sc, [1mdc, ch2, sk 1 st, 2sc, 1mdc, ch2, sk 1 st, 1mdc, 2sc, ch2, sk 1 st, 1mdc, 1sc] rep to last st, 1sc to end, turn.

Row 8: Ch1, 3sc, [ch2, sk sp, 3sc] rep across (*change to first cake of Yarn A*), turn.

Row 9: With A (*first cake*). Ch1, [3sc, 1mdc, ch2, sk 1 st, 2sc, 1mdc, 2sc, ch2, sk 1 st, 1mdc] rep to last 3 sts, 3sc to end, turn.

Row 10: Ch1, 4sc, [ch2, sk sp, 5sc] rep across omitting last sc (*change to first cake of Yarn B*), turn.

Continue changing colors after every 2 rows and at the same time keep alternating first and second cakes in the same way after every 4 rows.

Row 11: With B. Ch1, 1sc, [ch2, sk 1 st, 2sc, 1mdc, ch2, sk 1 st, 3sc, ch2, sk 1 st, 1mdc, 2sc] rep to last 2 sts, ch2, sk 1 st, 1sc to end, turn.

Row 12: Ch1, 1sc, [ch2, sk sp, 3sc] rep to last sp and sc, ch2, sk sp, 1sc to end (*change to A*), turn.

Row 13: With A. Ch1, 1sc, 1mdc, [ch2, sk 1 st, 2sc, 1mdc, ch2, sk 1 st, 1sc, ch2, sk 1 st, 1mdc, 2sc, ch2, sk 1 st, 1mdc] rep to last st, 1sc to end, turn.

Row 14: Ch1, 2sc, [ch2, sk sp, 3sc, ch2, sk sp, 1sc] rep to last st, 1sc to end (*change to B*), turn.

Row 15: With B. Ch1, 1sc, [ch2, sk 1 st, 1mdc, 2sc, ch2, sk 1 st, 1mdc, 1sc, 1mdc, ch2, sk 1 st, 2sc, 1mdc] rep to last 2 sts,

ch2, sk 1 st, 1sc to end, turn.

Row 16: Rep Row 12.

Row 17: With A. Ch1, 1sc, 1mdc, [2sc, ch2, sk 1 st, 1mdc, 3sc, 1mdc, ch2, sk 1 st, 2sc, 1mdc] rep to last st, 1sc to end, turn.

Row 18: Ch1, 4sc, [ch2, sk sp, 5sc] rep across omitting last sc (*change to B*), turn.

Row 19: With B. Ch1, 3sc, [ch2, sk 1 st, 1mdc, 2sc, ch2, sk 1 st, 2sc, 1mdc, ch2, sk 1 st, 3sc] rep across, turn.

Row 20: Ch1, 3sc, [ch2, sk sp, 3sc] rep across (*change to A*), turn.

Row 21: With A. Ch1, 2sc, [ch2, sk 1 st, 1mdc, 2sc, ch2, sk 1 st, 1mdc, ch2, sk 1 st, 2sc, 1mdc, ch2, sk 1 st, 1sc] rep to last st, 1sc to end, turn.

Row 22: Rep Row 14.

Rows 23–30: Rep Rows 15–22.

Rows 31–36: Rep Rows 7–12.

End of pattern repeat

Rep Rows 5–36 (pattern repeat) until your blanket is approx. 10cm/4in short of desired length.

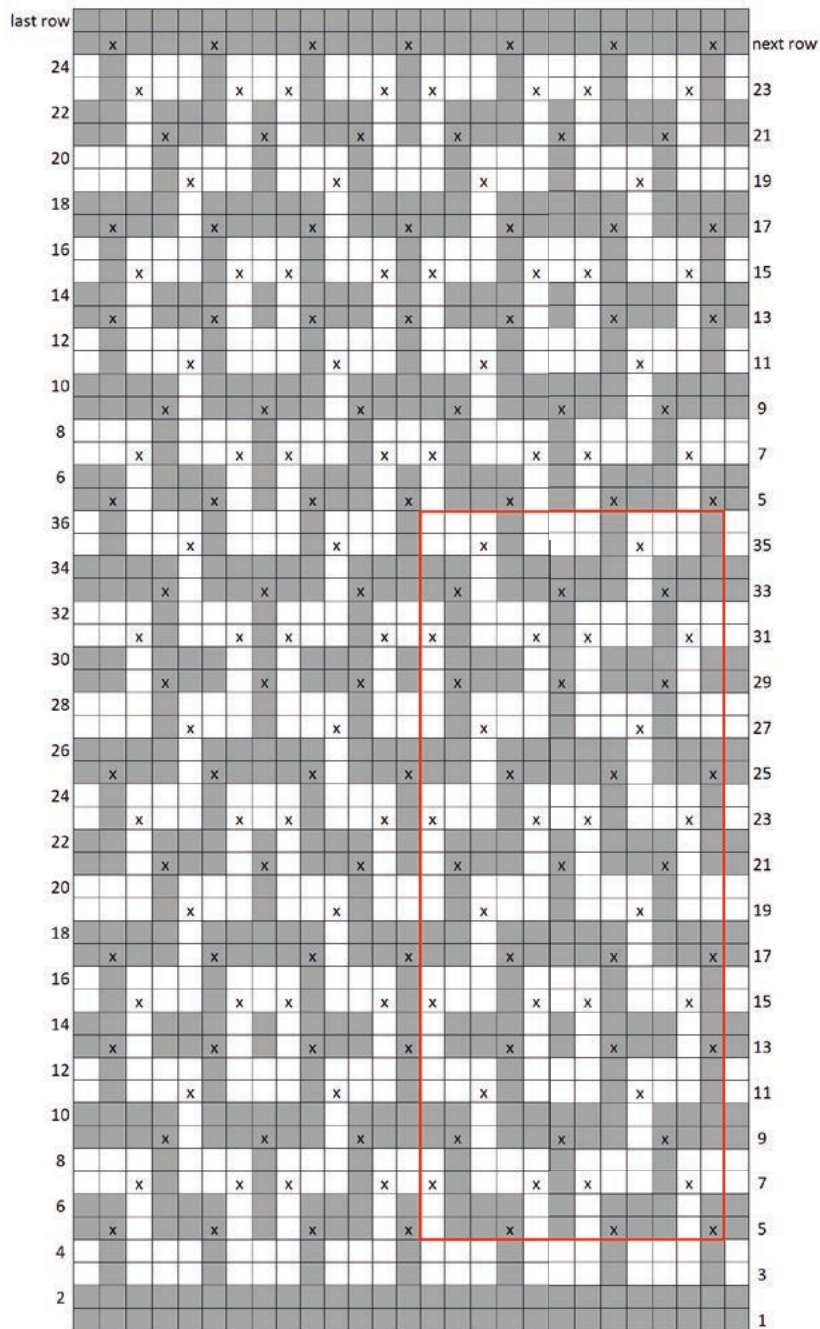
Then **rep Rows 5–24** once more.

Next row: With Yarn A. Ch1, 1sc, 1mdc, [3sc, 1mdc] rep to last st, 1sc to end, turn.

Last row: Ch1, 1sc in each st across.

FINISHING

With remaining yarn, crochet a simple border with any color, working on RS evenly in sc around the blanket and working (1sc, ch2, 1sc) in each corner. Fasten off, weave in ends. Block blanket to measurements.



- ☐ Yarn B: 755 Blueberry Bambam
- ☐ Yarn A: 766 Mid Morning Mochar'oo

acknowledgments

This book is a very personal project. The small seed of an idea was planted seven years ago when I just started designing crochet. And over the years it has grown into something big. That would never have happened without the help and support of my family, friends, readers, followers, and customers. I would like to extend my sincere thanks to them all. A Sea Story was created by friendship.

I am grateful to my dear husband, who has supported me all the way through the creative process, helping to choose colors for the projects, and discussing textures. He was the first to see all the designs and the first one to offer suggestions on some of the details, helping me to improve.

I am thankful to my parents for the support and love they give, and for their patience with all the crazy crochet clothes I created as a kid! Thank you for not judging, but accepting me as I am. And thank you to my lovely little boy, who is taking my crochet work seriously, and is helping with what he can.

I would like to thank my friend Fredrik Svenningsson, who pitched the idea of designing to me seven years ago and was my first customer, buying a small crochet bear. I still have a picture of that bear: Cute, cream, with a scarf. I never thought he would become the beginning of something as big as this book. I also wish to thank Fredrik for the photography for A Sea Story. We were a great team!

I would like to extend my sincere thanks to the lovely ladies who have helped me with pattern testing, and who also made samples for this book.

Over the years they have become my true virtual friends, even though I haven't met all of them in real life. When I need advice or help, they are always there, at the other end of a message: Kind, supportive and helpful. Thank you all so much: Loele van den Bergh-Theunissen, Jenna Bowers, Ruth Bracey, Sarah Fabbri, Elizabeth Garcia Kalka, Pam Hibbert, Laura Jackson, Lisa Marlow, Macarena Marskell, Faye Pike, Esther Schippers, Claire Shipton, Hilde Tindlund, Sandra Veneman.

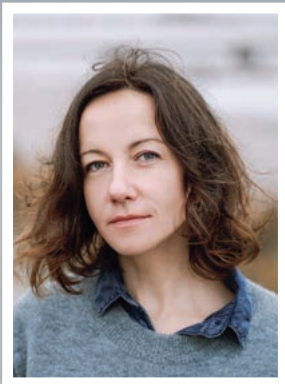
I would like to thank Amy Curtin and Carol Ibbetson (coolwool.net) for technical editing of the patterns, Suzanne Juby for text editing and professional guidance, Stephanie Peat for graphic design and being so sensitive and patient, Vitali Frozen (frozen-photo.com) for photo editing, and to my dear friends Lucie Szabová and Mattias Davidsson who, despite not being professional models, still took the challenge of modelling for this book.

I would also like to extend my gratitude to my friends from Scheepjes (scheepjes.com) for yarn and materials support. Thank you for helping me grow professionally and gain more confidence as a designer and pattern writer.

Finally, I would like to send a huge thanks to all my followers, readers, and customers. The crochet community is amazing! Your daily support continually inspires me to design new creations. Thank you for staying with me over these years. And, hopefully, more crochet adventures to come!



LILLA BJÖRN CROCHET



A SEA STORY

13 MODERN MOSAIC CROCHET PATTERNS

Tatsiana Kupryianchyk is a self-taught designer who developed a love of crochet from a young age. Based in Brno in the Czech Republic, she initially studied journalism and opera singing, and went on to become a magazine editor before her passion for crochet led her to launch Lilla Björn Crochet (lillabjorncrochet.com) in 2014. She specialises in mosaic, overlay and brioche crochet, and contributes patterns to *Inside Crochet*, *Crochet Now* and *Yarn* bookazine.

