

AUSTRALIA'S FAVOURITE KNITTING & FELTING MAGAZINE!

creative knitting

29

inspiring
patterns!

spring
knits

ideas

from Australia's
best designers

easy to follow
step-by-step
instructions

PLUS

Creative knits
for kids and the home

shawls, jumpers, scarves and more ...

EXCITING PATTERNS FOR ALL SKILL LEVELS



CONTENTS



38

WOMEN

*Luxurious knits
to keep ladies warm*

- 4 Coloured curves
- 8 Cabled Waistcoat
- 10 Cashmere Cap
- 16 Striped Scarf
- 18 Textured Wrap Jacket
- 25 Ashes of Roses
- 26 Long Line Vest
- 34 Lace Wave Wrap
- 38 Tight Bodice Cardigan
- 42 Over Size Vest
- 50 Bonnie Bonnie Beret
- 62 Draped Coat



15

KIDS

Adorable and fun children's knits

- 12 Waistcoat
- 24 Baby's First Spring Beanie
- 30 Cap Sleeve Tunic
- 34 Two Colour Garter Rib Jumper
- 42 Tie Front Cardigan and Booties
- 48 Boy's Contrast Sleeve Jumper
- 52 Baby Basket Weave Set
- 66 Girl's Dress with Stripes



10



18

MORE KIDS

- 60 Little Darling
- 66 Gilet With Hood

HOME

Accessorise your home with style

- 15 Coffee Mug Coasters
- 35 Hand Towel and
Face Washer Set



30



COLOURED CURVES

The body of this scoped neck cardigan is knitted sideways to give a gentle colour variation that follows the bodies shape and flatters the wearers curves.

STITCH GUIDE

The sleeves are knitted from wrist to top in the usual way but the back and fronts are knitted sideways.

When working with random dyed yarn, to avoid a sudden jump in colour when starting a new ball, start at a similar place in the colour shading.

BACK

Cast on 45(46, 47, 48) sts.

K1 row.

P1 row.

Shape Right Armhole

1st row: RS - Kfb, k11(12, 13, 14), yf, sl1, yb, turn and leave 32 sts.

2nd row: S11, p13(14, 15, 16).

3rd row: Kfb, k18(19, 20, 21), yf, sl1, yb, turn and leave 26 sts.

4th row: S11, p20(21, 22, 23).

5th row: Kfb, k25(26, 27, 28), yf, sl1, b, turn and leave 20 sts.

6th row: S11, p27(28, 29, 30).

7th row: Kfb, k47(48, 49, 50).

8th row: P49(50, 51, 52).

9th row: Kfb, k48(49, 50, 51).

10th row: P50(51, 52, 53).

11th row: Kfb, k49(50, 51, 52).

12th row: P51(52, 53, 54).

Next row: Cast on 29(31, 33,

35) sts, k to end. 80(83, 86, 89) sts.

Right Shoulder

Work 13(15, 17, 19) rows in st st.

Shape neck

Next row: (right side) K1, k2tog, k to end. Dec in this way on next 2 right side rows. 77(80, 83, 86) sts.

Work 37(41, 45, 49) rows in st st.

Next row: (right side) Kfb, k to end.

Inc in this way at beg of next 2 right side rows. 80(83, 86, 89) sts.

Left Shoulder

Work 15(17, 19, 21) rows in st st.

Shape Left Armhole

1st row: RS - Cast off 29(31, 33, 35) sts, k to end.

2nd row: P51(52, 53, 54).

3rd row: K1, k2tog, k48(49, 50, 51).

4th row: P50(51, 52, 53).

5th row: K1, k2tog, k47(48, 49, 50).

6th row: P49(50, 51, 52).

7th row: K1, k2tog, k25(26, 27, 28), yf, sl1, yb, turn and leave 20 sts.

8th row: S11, p27(28, 29, 30).

9th row: K1, k2tog, k18(19, 20, 21), yf, sl1, yb, turn and leave 26 sts.

10th row: sl1, p20(21, 22, 23).

11th row: K1, k2tog, k11(12, 13, 14), yf, sl1, yb, turn and leave 32 sts.

12th row: sl1, p13(14, 15, 16).

13th row: K1, k2tog, k43(44, 45, 46).

14th row: P45(46, 47, 48). Cast off.

RIGHT FRONT

Cast on 45(46, 47, 48) sts.

Shape Armhole

1st row: K.

2nd row: P11(12, 13, 14), sl1, yb, turn and leave 33 sts.

3rd row: sl1, k9(10, 11, 12), kfb, k1.

4th row: P19(20, 21, 22), sl1, yb, turn and leave 26 sts.

5th row: sl1, k17(18, 19, 20), kfb, k1.

6th row: P26(27, 28, 29), sl1, yb, turn and leave 20 sts.

7th row: sl1, k24(25, 26, 27), kfb, k1.

8th row: P48(49, 50, 51).

9th row: K46(47, 48, 49), kfb, k1.

10th row: P49(50, 51, 52).

11th row: K47(48, 49, 50), kfb, k1.

12th row: P50(51, 52, 53).

13th row: K48(49, 50, 51), kfb, k1.

14th row: P51(52, 53, 54).

15th row: K51(52, 53, 54).

Next row: WS - Cast on 29(31,

SKILL LEVEL



WHAT YOU'LL NEED

Yarn

350(400, 450, 500)g of Noro Silk Garden in shade 34
9 buttons

Needles

Pair of 5mm knitting needles
3.5mm crochet hook

Tension

18 sts by 24 rows to 10cm square over st st on 5mm needles

Special abbreviations

kfb = k into front and back of st.

sc = single crochet.

yb = yarn to back of work.

yf = yarn to front of work.

33, 35) sts, p to end. 80(83, 86, 89) sts.

Right Shoulder

Work 13(15, 17, 19) rows in st st.

Shape Neck

Next row: WS - Cast off 21(22, 23, 24) sts knitwise, p to end. 59(61, 63, 65) sts.

MEASUREMENTS

TO FIT BUST CM	86	91	97	102
FINISHED FIT CM	88	94	101	108
GARMENT LENGTH CM	44	46	47.5	49
SLEEVE LENGTH CM	47.5			



Dec row: RS - K to last 3 sts, skpo, k1.
Dec in this way at end of next 5 right side rows. 53(55, 57, 59) sts.
Work 11(13, 15, 17) rows in st st.
Cast off purlwise.

LEFT FRONT

Cast on 53(55, 57, 59) sts.
Beg with a k row, work 12(14, 16, 18) rows in st st.

Shape Neck

Inc row: RS - K to last 2 sts, kfb, k1.
Inc in this way at end of next 5 right side rows. 59(61, 63, 65) sts.
Next row: WS - Cast on 21(22, 23, 24) sts, p to end. 80(83, 86, 89) sts.

Left Shoulder

Work 13(15, 17, 19) rows in st st.

Shape Armhole

1st row: WS - Cast off 29(31, 33, 35) sts, p to end. 51(52, 53, 54) sts.
2nd row: K48(49, 50, 51), skpo, k1.
3rd row: P50(51, 52, 53).
4th row: K47(48, 49, 50), skpo, k1.
5th row: P49(50, 51, 52).
6th row: K46(47, 48, 49), skpo, k1.
7th row: P27(28, 29, 30), sl1, yb, turn and leave 20 sts.
8th row: sl1, k24(25, 26, 27), skpo, k1.
9th row: P20(21, 22, 23), sl1, yb, turn and leave 26 sts.
10th row: sl1, k17(18, 19, 20), skpo, k1.
11th row: P13(14, 15, 16), sl1, yb, turn and leave 32 sts.
12th row: sl1, k10(11, 12, 13), skpo, k1.
13th row: P45(46, 47, 48).
Cast off.

SLEEVES

Cast on 36(40, 42, 46) sts.
Beg with a k row, work 12 rows in st st.
Inc row: Kfb, k to last 2 sts, kfb, k1.
Inc in this way at each end of 7(7, 8, 8) foll 10th rows. 52(56, 60, 64) sts.
Cont in st st until sleeve measures 46cm from beg, ending with a p row.

Shape Top

Cast off 2 sts at beg of next 2 rows.
Dec row: K1, k2tog, k to last 3 sts, skpo, k1.
Dec in this way at each end of next 5 right side rows. 36(40, 44, 48) sts.
Work 7 rows in st st.
Dec as before at each end of next 5 right side rows. 26(30, 34, 38) sts.
Cast off 2 sts at beg of next 6 rows. 14(18, 22, 24) sts.
Cast off.

MAKING UP

Press according to ball band.
Join shoulders. Set in sleeves.
Join side and sleeve seams.

Edgings

Using crochet hook and with wrong side facing, join yarn to left side seam.

Round 1:

Missing approximately every 5th row end along lower edge and back neck and working three times into same place to turn corners, work a round of dc along left front lower edge, up left front, around neck, down right front and along lower edge of right front and back, ss into 1st dc.

Buttonhole round: 1ch, 1dc in each dc along left front lower edge, 3dc in same dc at corner, 1dc in each dc up left front, 3dc in same dc at corner, 1dc in each dc around neck, 3dc in same dc at corner, 1dc in next dc. [3ch, miss 2dc, 1dc in each of next, 1dc] 8 times. 3ch, miss 2dc, 1dc in each dc to corner. 3dc in same dc. 1dc in each dc along lower edge, ss in 1st dc.

Next round: * [1dc, 1ch, 1dc] all in next dc, 5S in foll dc, * rep from * to * to 1st buttonhole, ending [1 dc, 1ch, 1dc] in last dc, ** [2dc, 1ch, 1dc, ss] in 3ch space, miss 1dc, [1 dc, 1ch, 1dc] in next dc, ss in foll dc, [1 dc, 1ch, 1dc] in next dc, rep from ** 8 more times, cont in patt to end.
Fasten off.

Work around cast on edge of sleeves in the same way. Press edgings. Sew on buttons.

Wools Available

The Wool Inn

Shop 14 NK Centre
450 High St, Penrith
Ph: 02 4732 2201

STITCH 'N TIME



QUALITY YARNS

- PATONS • SIRDAR • WENDY
- CLECKHEATON • JO SHARP
- HEIRLOOM • NATURALLY
- NATURAL & ITALIAN YARNS
- PATTERNS & ACCESSORIES

READY MADE KNITWEAR

- KNITTING CLASSES
- Made to measure Orders Welcome
- HABERDASHERY
- TAPESTRIES • EMBROIDERY

02 6282 8383

2/55 Colbee Court Phillip ACT 2606

Wondoflex
Yarn Craft Centre
Est. 1938



Visit us at 1353 Malvern Road, Malvern Road
or shop online safely at: www.wondoflex.com.au

Phone: (03) 9822 6231



AUSTRALIAN
ALPACA

tailored strands
luxurious knitting yarns



- Luxuriously soft and versatile.
- Stylish, elegant and light.
- Your imagination can be your springboard.
- New Stockist enquiries welcome.



Contact Tailored Strands or ask at your local wool retailer

p (03) 5345 6169 • f (03) 5345 6187

PO Box 368 Creswick Victoria 3363

info@tailoredstrands.com.au • www.tailoredstrands.com.au

CABLED WAISTCOAT

Wendy Design



SKILL LEVEL



WHAT YOU'LL NEED

Yarn

7, 8, 8, 9 balls x Wendy Sorrento DK 50g
5 buttons

Needles

3.25mm knitting needle
4mm knitting needle
Cable needle
Stitch holders

Tension

22 sts by 31 rows to 10 cm over st st using 4mm needles.

Special abbreviations

M1 – make 1, pick up loop before next st and work into back of it.

C10 – slip next 3sts on cable needle to front of work; K2 now K3 from cable needle, now slip next 2 sts on cable needle to back of work, K3 then K2 from cable needle.

[] repeat stitches in brackets given number of times.

HAND KNIT YARNS by
Naturally
IT'S PURE
NEW ZEALAND

STITCH GUIDE

Note: The ladder effect is formed when sts are run down at the end of each piece of work.

BACK

Using 3.25mm needles, cast on 125 (135, 145, 155) sts.

Row 1: RS - K2, * P1, K1, rep from * to last st, K1.

Row 2: K1, * P1, K1, rep from * to end.

Work 3 more rows in rib, inc 1 st at end of last row. 126 (136, 146, 156) sts.

Next row (on which foundation loops for ladders are worked): P9 (14, 19, 24), K4, [P10, K4, yfwd, K4] 5 times, P10, K4, P to end. 131 (141, 151, 161) sts. Change to 4mm needles and patt.

Row 1: RS - K9 (14, 19, 24), P4, [K10, P9] 5 times, K10, P4, K to end.

Row 2: P9 (14, 19, 24), K4, [P10, K9] 5 times, P10, K4, P to end.

Row 3 to 8: Rep 1st and 2nd rows 3 times.

Row 9: K9 (14, 19, 24), P4, [C10, P9] 5 times, C10, P4, K to end.

Row 10: As 2nd row. These 10 rows form the patt. Continue in patt until work measures 66 (67, 67, 69) cm, from beg, ending after a wrong side row.

Shape Shoulders

Note: Whilst shaping shoulders the sts corresponding to the ladder sts (i.e. the yarn

forwards made after the rib row) should not be counted as stitches, but should be dropped off the needle as you come to them. This note applies to front shoulders too.

Cast off 16 (17, 19, 20) sts at beg of next 4 rows, then 16 (18, 19, 21) sts at beg of following 2 rows. Patt 1 row dropping off centre st slip final 30 (32, 32, 34) sts onto a st holder.

RIGHT FRONT

Using 3.25mm needles, cast on 61 (67, 71, 77) sts.

Work 5 rows in rib, inc 1 st at side edge on 1st and 3rd sizes only. 62 (67, 72, 77) sts. **

Next row: P9 (14, 19, 24), K4, [P10, K4, yfwd, K4] twice, P10, K3. 64 (69, 74, 79) sts.

Change to 4mm needles and patt.

Row 1: RS - P3, [K10, P9] twice, K10, P4, K to end.

Row 2: P9 (14, 19, 24), K4, [P10, K9] twice, P10, K3.

Rows 3 to 8: Rep 1st and 2nd row 3 times.

Row 9: P3, [C10, P9] twice, C10, P4, K to end.

Row 10: As 2nd row. These 10 rows form the patt. Continue in patt until work measures 36cm from beg, end after a wrong side row.

Shape front slope

Dec 1 st at front edge on next row, then on every following 4th row until 61 (65, 70, 74) sts remain, then on every following 6th row until 50 (54,

59, 63) sts remain, (including 2 ladder sts).

Work straight until front measures same as back to shoulder shaping, ending at side edge.

Shape shoulder

Cast off 16 (17, 19, 20) sts at beg of next and following alt row.

Work 1 row.

Cast off final 16 (18, 19, 21) sts.

LEFT FRONT

Work as right front to **.

Next row: K3, [P10, K4, yfwd, K4] twice, P10, K4, P to end – 64 (69, 74, 79) sts.

Change to 4mm needles and place patt.

Row 1: K9 (14, 19, 24), P4, K10, [P9, K10] twice, P3.

Complete to match right front.

BORDERS

Join shoulder seams by top sewing.

With right side facing, using 3.25mm needles, K up 98 sts up to start of right front slope, 84 (87, 87, 90) sts up to shoulder shaping, finally K across the first 15 (16, 16, 17) sts of back neck. 197 (201, 201, 205) sts.

Beg 2nd row work 4 rows in rib as on back.

Next row: Rib 106 (110, 110,

114), [cast off 3 sts, rib 18 – including st on needle after cast off] 4 times, cast off 3 sts, rib to end.

Next row: In rib casting on 3 sts over those cast off.

Rib 4 more rows.

Cast off in rib.

Work 2nd border the same omitting holes and picking up sts in reverse order.

Armbands

Place a marker 70 (72, 72, 74) rows down from shoulder on each side edge.

With right side facing, using 3.25mm needles, K up 111 (117, 117, 123) sts evenly between markers.

Beg on 2nd row work 7 rows in rib as given on back, dec 1 st at each end of every row.

Cast off in rib.

MAKING UP

Press as instructions given on ball band. Join side seams and edges of armbands by top sewing. Join borders at back of neck. Sew on buttons.

Wool available.

Wentworth Distributors NZ Ltd

Free phone AU: 1800 150 542
Free phone NZ: 0800 738 998
www.NaturallyYarnsNZ.com

MEASUREMENTS

SIZE CM	81-86,	91-97,	102-107,	112-117
FINISHED FIT CM	97,	107,	117,	127
GARMENT LENGTH CM	66,	67,	67,	69

CASHMERE CAP

This simple seed stitch cap is knitted flat and then joined with one seam at the back.

SKILL LEVEL



WHAT YOU'LL NEED

Yarn

2 balls x Lana Gatto Prestige 100% pure Cashmere. Note: Three balls of yarn will make two caps.

Needles

3.25mm knitting needles
4mm knitting needles
Wool sewing needle

Tension

As per ball band

STITCH GUIDE

Pattern

1st row: * K3, P1 *

2nd and alternate rows: Purl.

Rows 3 and 7: Knit.

Row 5: K1, * P1, K3 *, P1, K2.

CAP

Using 3.25mm needles cast on 120 stitches.

1st row: Knit.

2nd row: Purl.

Repeat these two rows twice (6 rows stocking stitch in all). Change to 4mm needles and work in pattern until work measures approximately 12cm from start, change ending with a purl row.

Shape crown:

Working in stocking stitch



continue as follows.

1st row: * K10, K2 tog repeat from * to end of row.

2nd row: Purl.

3rd row: * K9, K2 tog repeat from * to end of row.

Continue decreasing in this manner until 20 stitches remain.

Next row: * K2 tog, repeat to end (10 sts).

Break off yarn and thread through remaining stitches. Draw up tightly and fasten off securely.

MAKING UP

Use wool needle to join back seam.

Knitting Yarns by Mail

114 Fox and Fankes Road
Boolarra Sth, Vic 3870
Ph: 0408 992 927

www.knittingyarns.com.au

MEASUREMENTS

SIZE	LADIES AVERAGE



bamboo & pearls dk

The most exquisite yarn imaginable, Sublime bamboo and pearls dk is made from a blend of naturally soft bamboo and luxuriously rich pearl fibre to create hand knits with a fabulously elegant drape and incredible stitch definition.

Available in a palette of beautiful colours and shades for dressed up, to party perfect, this Sublime yarn feels great on the skin

Sublime™

*
ON-SHOW NOW!
at all good
wool shops



The most chic Sublime bamboo & pearls dk book
16 designs for women and girls with designs by Sarah Hatton



WAISTCOAT

Design by Twilleys of Stamford Design

STITCH GUIDE

Instructions in square brackets [] should be repeated the number of times given after the brackets.

BACK

Using 4mm needles and A, cast on 61 (67, 73, 79) sts. Starting with a K row, st st until back measures 10 (13, 17, 20) cm, end with a WS row.

Shape Armholes

Cast off 3 sts at beg of next 2 rows. 55 (61, 67, 73) sts. Dec 1 st at each end of next 5 rows, then on foll 2 (3, 4) alt rows. 41 (45, 51, 55) sts. Cont straight until armhole measures 13 (14, 15, 16) cm, end with a WS row.

Shape Shoulders and Back Neck

Next row: RS – Cast off 3 (4, 5, 5) sts, K until there are 7 (7, 8, 9) sts on right needle and turn, leaving rem sts on a holder. Work on this set of sts only for first side of neck. Cast off 3 sts at beg of next row. Cast off rem 4 (4, 5, 6) sts. Return to sts left on holder, rejoin yarn with RS facing, cast off centre 21 (23, 25, 27)

sts and K to end.

Cast off 3 (4, 5, 5) sts at beg of next row, then 3 sts at beg of foll row. Cast off rem 4 (4, 5, 6) sts.

POCKET LINING

Using 4mm needles and A, cast on 17 (19, 21, 23) sts. Starting with a K row, st st for 10 (12, 14, 16) rows, end with a WS row. Break yarn and leave sts on a holder.

LEFT FRONT

Using 4mm needles and A, cast on 2 sts. Starting with a K row, st st as follows: Work 1 row. Inc 1 st at each end of next 3 rows, end with a WS row. 8 sts. Cast on 3 (3, 4, 4) sts at beg of next row, 3 (4, 4, 4) sts at beg of foll alt row, 3 (4, 4, 5) sts at beg of foll alt row, and 4 (5, 7, 9) sts at beg of foll alt row and at same time inc 1 st at end of next row and at same edge on foll 6 rows, ending with a RS row. 28 (31, 34, 37) sts. Place marker at beg of last row to denote base of left side seam. Cont straight for 9 (11, 13, 15) rows, end with a WS row.

PLACE POCKET

Next row: RS – K5 (6, 6, 7), slip next 17 (19, 21, 23) sts onto a holder and, in their place, K across 17 (19, 21, 23) sts of pocket lining, K6 (6, 7, 7). Cont straight until left front measures 10 (13, 17, 20) cm from marker, end with a WS row.

Shape Armhole

Cast off 3 sts at beg of next row. 25 (28, 31, 34) sts. Work 1 row.

Shape Front Slope

Dec 1 st at front opening edge of next and foll 4 (5, 5, 6) alt rows and at same time dec 1 st at armhole edge of next 5 rows, then on foll 2 (3, 3, 4) alt rows. 13 (14, 17, 18) sts. Dec 1 st at front slope edge only on 2nd and foll 2 (1, 2, 2) alt rows, then on 3 (4, 4, 4) foll 4th rows. 7 (8, 10, 11) sts. Cont straight until left front matches back to start of shoulder shaping, end with a WS row.

Shape Shoulder

Cast off 3 (4, 5, 5) sts at beg of next row. Work 1 row. Cast off rem 4 (4, 5, 6) sts.

RIGHT FRONT

Using 4mm needles and A, cast on 2 sts. Starting with a K row, st st as follows: Work 1 row. Inc 1 st at each end of next 3

rows, ending with a WS row. 8 sts.

Inc 1 st at beg of next row. 9 sts.

Cast on 3 (3, 4, 4) sts at beg of next row, 3 (4, 4, 4) sts at beg of foll alt row, 3 (4, 4, 5) sts at beg of foll alt row, and 4 (5, 7, 9) sts at beg of foll alt row and at same time inc 1 st at end of next row and at same edge on foll 5 rows, end with a WS row. 28 (31, 34, 37) sts.

Place marker at beg of last row to denote base of right side seam.

Cont straight until right front measures 10 (13, 17, 20) cm from marker, end with a RS row.

Shape Armhole

Cast off 3 sts at beg of next row. 25 (28, 31, 34) sts.

Shape Front Slope

Dec 1 st at front opening edge of next and foll 4 (5, 5, 6) alt rows and at same time dec 1 st at armhole edge of next 5 rows, then on foll 2 (3, 3, 4) alt rows. 13 (14, 17, 18) sts. Dec 1 st at front slope edge only on 2nd and foll 2 (1, 2, 2) alt rows, then on 3 (4, 4, 4) foll 4th rows. 7 (8, 10, 11) sts. Cont straight until right front matches back to start of shoulder shaping, end with a RS row.

Shape Shoulder

Cast off 3 (4, 5, 5) sts at beg of next row. Work 1 row. Cast off rem 4 (4, 5, 6) sts.

MEASUREMENTS

SIZE – YEARS	2	3	5	7
TO FIT CHEST CM	51	56	61	66
FINISHED FIT CM	55	61	66	72
GARMENT LENGTH CM	34	37	42	46

SKILL LEVEL



intermediate

WHAT YOU'LL NEED

Yarn

Twilleys Freedom Sincere
50g
2 (2, 3, 3) balls Main
colour (A)
1 ball x 1st Contrast Colour
(B)
1 ball x 2nd Contrast
Colour (C)
3 buttons

Needles

3.25mm knitting needles
4.00mm knitting needles
3.25mm circular knitting
needle

Tension

22 stitches and 28 rows
to 10cm over st st using
4mm needles.

Special abbreviations

yrn – yarn round needle

HAND KNIT YARNS by
Naturally
IT'S PURE
NEW ZEALAND





ARMHOLE BORDERS (BOTH ALIKE)

Join both shoulder seams.
With RS facing, using 3.25mm needles and B, pick up and knit 63 (67, 73, 77) sts evenly all round armhole edge.

****Row 1:** WS – P1, *K1, P1, rep from * to end.

Row 2: K1, *P1, K1, rep from * to end.

These 2 rows form rib.

Work in rib for a further 4 rows, end with a RS row.

Break off B and join in C.

Work in rib for 1 row more, end with a WS row.

Cast off in rib.

POCKET TOP

Slip 17 (19, 21, 23) pocket sts onto 3.25mm needles, rejoin B with RS facing and K these sts. Complete as given for Armhole Borders from **.

Sew pocket lining in place on inside, then neatly sew down ends of pocket top.

HEM BORDER

Join both side and armhole border seams.

With RS facing, using 3.25mm needles and B, starting and ending at centre of original cast-on edge of fronts, pick up and knit 19 (22, 25, 28) sts along shaped lower edge of left front to side seam, 61 (67, 73, 79) sts from back cast-on edge, then 19 (22, 25, 28) sts along shaped lower edge of right front - 99 (111, 123, 135) sts.

Starting with row 1, work in rib as given for armhole borders for 6 rows, inc 1 st at each end of every row and end with a RS row. 111 (123, 135, 147) sts. Break off B and join in C.

Work in rib for 1 row more, inc 1 st at each end of row and end with a WS row.

Cast off all 113 (125, 137, 149) sts in rib.

FRONT BORDER

With RS facing, using 3.25mm circular needle and B, starting and ending at centre of original cast-on edge of fronts (this is same place as where hem border started and ended), pick up and knit 12 sts up right front shaped edge to last inc, 27 (33, 44, 51) sts up right front opening edge to start of front slope shaping, 34 (38, 40, 42) sts up right front slope, 27 (29, 31, 33) sts from back, 34 (38, 40, 42) sts down left front slope to start of front slope shaping, 27 (33, 44, 51) sts down left front opening edge to last inc, then 12 sts down left front shaped edge. 173 (195, 223, 243) sts.

Starting with row 1, work in rib as given for armhole borders for 3 rows, inc 1 st at each end of every row and end with a WS row. 179 (201, 229, 249) sts.

Row 4: RS – inc in first st, rib to last 40 (46, 57, 63) sts, yrn, work 2 tog (to make first buttonhole), [rib 9 (12, 11, 13), yrn, work 2 tog (to make a buttonhole)] 2 (2, 3, 3) times, rib to last st, inc in last st. Work in rib for 2 rows more, inc 1 st at each end of both rows and end with a RS row. 185 (207, 235, 255) sts.

Break off B and join in C.

Work in rib for 1 row more, inc 1 st at each end of row and ending with a WS row.

Cast off all 187 (209, 237, 257) sts in rib.

MAKING UP

Sew on buttons.

Wool available.

Wentworth Distributors NZ Ltd

Free phone AU: 1800 150 542

Free phone NZ: 0800 738 998

www.NaturallyYarnsNZ.com

COFFEE MUG COASTERS

Prepare now with Christmas not far away ... these coasters are perfect stocking filler solutions for friends and relatives in colours to match every home decor.

SKILL LEVEL



beginner

WHAT YOU'LL NEED

Yarn

2 x 50gm 8 ply Heirloom Cotton in contrasting colours
1 x button

Needles

4.50mm knitting needles

Tension

25 st x 36 rows to 12cm over pattern

MEASUREMENTS

SIZE	12 X 12 CM

Design note: 2 x 50gm balls will make two sets so there are extra when needed.

COASTER

Cast on 25 sts.

Row 1: * K1, P1 * repeat to last stitch, K1.

Repeat this single row until 34 rows have been knitted.

Cast off with a medium

tension. Sew in ends. Make three pieces in each colour (or more if needed).

TIE

Cast on 65 sts.

Knitting to the same pattern, knit 4 rows.

5th Row: Pattern 4 sts, cast off 2 sts, continue in pattern to end.

6th Row: Pattern to cast off, cast on 2 sts, continue to end. Pattern a further 4 rows. Cast off.

MAKING UP

Sew in ends and sew on button and bundle up your coasters.

Laundry instructions: Wash as normal for cotton. Dry

flat and pull gently back into the 12cm square and leave to dry.

Yarns available.

Tasmanian Wool Suppliers P/L
58 Main Road
Moonah Tas
Ph: 03 6278 1800
www.wool suppliers.com.au



STRIPED SCARF

A soft, lightweight textured Alpaca scarf knitted lengthways – suitable for beginner knitters.



MEASUREMENTS

SIZE CM	175 X 187 EXCLUDING FRINGE
---------	----------------------------

PATTERN

Cast on 230 stitches – Colour A (brushed yarn).

Knit 3 rows (garter stitch, knit only).

Row 5: Change to Colour B (8ply) purl.

Row 6: Knit.

Row 7: Purl.

Row 8: Knit.

Change to Colour C (brushed) – knit 4 rows (garter stitch).

Change to Colour D (8 ply) – work 4 rows stocking stitch as

in rows 5-8.

Change to Colour E (brushed) – knit 4 rows (garter stitch).

Change to Colour B (8ply) – work 4 rows stocking stitch as in rows 5-8.

Change to Colour A (brushed) – knit 4 rows (garter stitch).

Change to Colour B (8ply) – work 4 rows stocking stitch as in rows 5-8.

Change to Colour E (brushed) – knit 4 rows (garter stitch).

Change to Colour D (8ply) –

work 4 rows stocking stitch as in rows 5-8.

Change to Colour C (brushed) – knit 4 rows (garter stitch).

Change to Colour B (8ply) – work 4 rows stocking stitch as in rows 5-8.

Change to Colour A (brushed) – knit 4 rows (garter stitch).

Cast off loosely.

FINISHING

Using wool sewing needle, darn in ends.

SKILL LEVEL



WHAT YOU'LL NEED

Yarn

Colour A – 1 x 50g ball of Tailored Strands Brushed 100% Alpaca (Teal)

Colour B – 1 x 50g ball of Eki Riva Natal Alpaca silk blend (Purple)

Colour C – 1 x 50g ball of Rare Essentials Brushed 80% Alpaca 20% Merino (Cerise)

Colour D – 1 x 50g ball of Eki Riva Natal Alpaca silk blend (Teal)

Colour E – 1 x 50g ball of Rare Essentials Brushed 80% Alpaca 20% Merino (Raspberry)

Needles

5mm knitting needles

Wool sewing needle

Crochet hook

Tension

Correct tension is not essential for this garment.

Cut 20cm lengths of all yarns for fringe. Using four different yarns together, thread using crochet hook; make fringe on each end.

Galifrey Alpaca Textiles

PO Box 326, Braidwood NSW

Ph: 02 4847 5139

www.galifrey.com.au

The Patons logo, featuring a stylized 'P' icon followed by the brand name 'Patons' in a white serif font, all enclosed within a dark blue rounded rectangular border.

Mist

Patons have put together a new book with 8 lust-after pieces designed in Mist for women.

Our guest designer Jo Nathan has developed 5 pieces, which combine dimensional lace work with unstructured shapes, deep armholes and soft shoulder lines. Also included are truly classic garments with flattering side shaping.

Enjoy working with the beautiful colours and touch-me appeal of Mist.

Mist Book 1299



www.patons.biz
1800 337 032

Patons. Quality yarn since 1923.

TEXTURED WRAP JACKET

A Wrap Jacket in advanced knitting. Design by Patons.



SKILL LEVEL



WHAT YOU'LL NEED

Yarn

15, 16, 18, 20 x Patons
Zhivago 50gm Colour
#4439

Needles

4.00mm knitting needles
4.00mm circular knitting
needle
Wool sewing needle

Tension

24 sts by 29 rows to 10
cm over main patt, using
4.00mm needles.



STITCH GUIDE

See graph A and B with notes

BACK

Using 4.00mm needles, cast on 85 (97, 109, 121) sts.

Beg Main Patt

Work rows 1 to 40 incl from Graph A or written instructions as follows:

Row 1: P0 (0, 1, 0), K0 (0, 3, 0), P0 (0, 1, 0), K0 (1, 2, 0), P0 (2, 2, 0), K0 (3, 3, 0), P2 (2, 2, 0), K2 (2, 2, 0), P1, K3, P1, * K1, P1, K3, P1, K2, P2, K3, P2, K2, P1, K3, P1, rep from * to last 10 (16, 0, 6) sts, K1 (1, 0, 1), P1 (1, 0, 1), K3 (3, 0, 3), P1 (1, 0, 1), K2 (2, 0, 0), P2 (2, 0, 0), K0 (3, 0, 0), P0 (2, 0, 0), K0 (1, 0, 0).

Row 2: P0 (1, 0, 0), K0 (2, 0, 0), P0 (3, 0, 0), K2 (2, 0, 0), P2 (2, 0, 0), K5 (5, 0, 5), P1 (1, 0, 1), * K5, P2, K2, P3, K2, P2, K5, P1, rep from * to last 9 (15, 21, 5) sts, K5, P2 (2, 2, 0), K2 (2, 2, 0), P0 (3, 3, 0), K0 (2, 2, 0), P0 (1, 2, 0), K0 (0, 5, 0).

Row 3: As 1st row.

Row 4: As 2nd row.

Row 5: K0 (0, 1, 0), P0 (0, 1, 0), K0 (0, 3, 0), P0 (0, 1, 0), K0 (2, 2, 0), P0 (2, 2, 0), K0 (1, 1, 0), P1 (2, 2, 0), K2 (2, 2, 0), P1 (1, 1, 0), K3, P1, K1, * K2, P1, K3, P1, K2, P2, K1, P2, K2, P1, K3, P1, K1, rep from * to last 10 (16, 0, 6) sts, K2 (2, 0, 2), P1 (1, 0, 1), K3 (3, 0, 3), P1 (1, 0, 0), K2 (2, 0, 0), P1 (2, 0, 0), K0 (1, 0, 0), P0 (2, 0, 0), K0 (2, 0, 0).

Row 6: P0 (2, 0, 0), K0 (2, 0, 0), P0 (1, 0, 0), K1 (2, 0, 0), P2 (2, 0, 0), K5 (5, 0, 4), P2 (2, 0, 2), * P1, K5, P2, K2, P1, K2, P2, K5, P2, rep from * to last 9 (15, 21, 5) sts, P1, K5 (5, 5, 4), P2 (2, 2, 0), K1 (2, 2, 0), P0 (1, 1, 0), K0 (2, 2, 0), P0 (2, 2, 0), K0 (0, 5, 0), P0 (0, 1, 0).

Row 7: As 5th row.

Row 8: As 6th row.

Row 9: K0 (0, 2, 0), P0 (0, 1, 0), K0 (0, 3, 0), P0 (1, 1, 0), K0 (2, 2, 0), P0 (3, 3, 0), K2 (2, 2, 0), P1 (1, 1, 0), K3 (3, 3, 2), P1, K2, * P1, K2, P1, K3, P1, K2, P3, K2, P1, K3, P1, K2, rep from * to last 10 (16, 0, 6) sts, P1 (1, 0, 1), K2 (2, 0, 2), P1 (1, 0, 1), K3 (3, 0, 2), P1 (1, 0, 0), K2 (2, 0, 0), P0 (3, 0, 0), K0 (2, 0, 0), P0 (1, 0, 0).

Row 10: K0 (1, 0, 0), P0 (2, 0, 0), K0 (3, 0, 0), P2 (2, 0, 0), K5 (5, 0, 3), P2 (2, 0, 2), K1 (1, 0, 1), * P2, K5, P2, K3, P2, K5, P2, K1, rep from * to last 9 (15, 21, 5) sts, P2, K5 (5, 5, 3), P2 (2, 2, 0), K0 (3, 3, 0), P0 (2, 2, 0), K0 (1, 5, 0), P0 (0, 2, 0).

Row 11: As 9th row.

Row 12: As 10th row.

Row 13: P0 (0, 1, 0), K0 (0, 2, 0), P0 (0, 1, 0), K0 (1, 3, 0), P0 (1, 1, 0), K0 (2, 2, 0), P0 (1, 1, 0), K1 (2, 2, 0), P1 (1, 1, 0), K3 (3, 3, 1), P1, K2, P1, * P2, K2, P1, K3, P1, K2, P1, K2, P1, K3, P1, K2, P1, rep from * to last 10 (16, 0, 6) sts, P2 (2, 0, 2), K2 (2, 0, 2), P1 (1, 0, 1), K3 (3, 0, 1), P1 (1, 0, 0), K1 (2, 0, 0), P0 (1, 0, 0), K0 (2, 0, 0), P0 (1, 0, 0), K0 (1, 0, 0).

Row 14: K0 (2, 0, 0), P0 (2, 0, 0), K0 (1, 0, 0), P1 (2, 0, 0), K5 (5, 0, 2), P2 (2, 0, 2), K2 (2, 0, 2), * K1, P2, K5, P2, K1, P2, K5, P2, K2, rep from * to last 9 (15, 21, 5) sts, K1, P2, K5 (5, 5, 2), P1 (2, 2, 0), K0 (1, 1, 0), P0 (2, 2, 0), K0 (2, 5, 0), P0 (0, 2, 0), K0 (0, 1, 0).

Row 15: As 13th row.

Row 16: As 14th row.

Row 17: P0 (0, 2, 0), K0 (2, 2, 0), (P1, K3) 1 (2, 3, 0) times, P1, K2, P2, * K1, P2, K2, (P1, K3) 3 times, P1, K2, P2, rep from * to last 10 (16, 0, 6) sts, K1 (1, 0, 1), P2 (2, 0, 2), K2 (2, 0, 2), (P1, K3) 1 (2, 0, 0) times, P1 (1, 0, 1), K0 (2, 0, 0).

Row 18: K0 (3, 0, 0), P0 (3,



0, 0), K5 (5, 0, 1), P2 (2, 0, 2), K2 (2, 0, 2), P1 (1, 0, 1), * K2, P2, K5, P3, K5, P2, K2, P1, rep from * to last 9 (15, 21, 5) sts, K2, P2, K5 (5, 5, 1), P0 (3, 3, 0), K0 (3, 5, 0), P0 (0, 2, 0), K0 (0, 2, 0).

Row 19: As 17th row.

Row 20: As 18th row.

Row 21: K0 (0, 1, 0), P0 (0, 2, 0), K0 (0, 2, 0), P0 (0, 1, 0), K0 (3, 3, 0), P0 (1, 1, 0), K0 (1, 1, 0), P0 (1, 1, 0), K3 (3, 3, 0), P1 (1, 1, 0), K2, P2, K1, * K2, P2, K2, P1, K3, P1, K1, P1, K3, P1, K2, P2, K1, rep from * to last 10 (16, 0, 6) sts, K2 (2, 0, 2), P2 (2, 0, 2), K2 (2, 0, 2), P1 (1, 0, 0), K3 (3, 0, 0), P0 (1, 0,

0), K0 (1, 0, 0), P0 (1, 0, 0), K0 (3, 0, 0).

Row 22: K0 (4, 0, 0), P0 (1, 0, 0), K4 (5, 0, 0), P2 (2, 0, 2), K2 (2, 0, 2), P2 (2, 0, 2), * P1, K2, P2, K5, P1, K5, P2, K2, P2, rep from * to last 9 (15, 21, 5) sts, P1, K2, P2, K4 (5, 5, 0), P0 (1, 1, 0), K0 (4, 5, 0), P0 (0, 2, 0), K0 (0, 2, 0), P0 (0, 1, 0).

Row 23: As 21st row.

Row 24: As 22nd row.

Row 25: As 17th row.

Row 26: As 18th row.

Row 27: As 17th row.

Row 28: As 18th row.

Row 29: As 13th row.

Row 30: As 14th row.

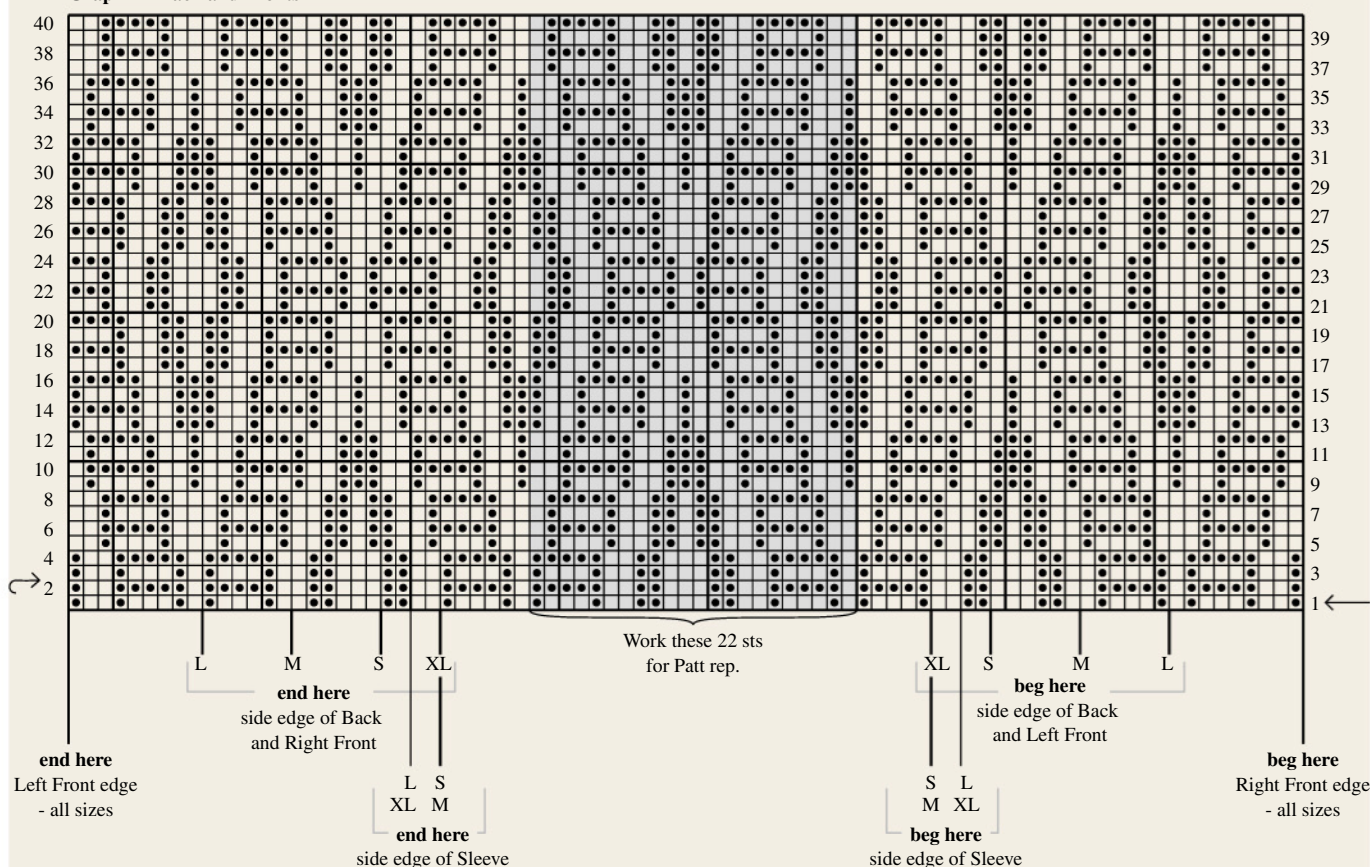
Row 31: As 13th row.

MEASUREMENTS

SIZE	S	M	L	XL
TO FIT BUST	75-80	85-90	95-100	105-110
FINISHED FIT	84	94	104	114 CM
GARMENT LENGTH	52	53	54	55 CM
SLEEVE LENGTH	43 CM			

TEXTURED WRAP JACKET

Graph A - Back and Fronts



KEY - Shaded area represents st repeat.

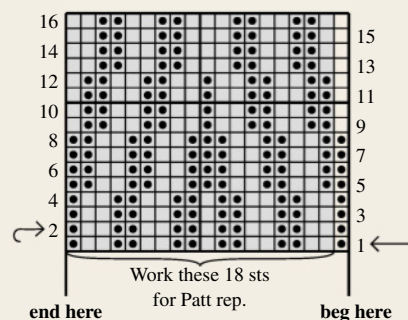
□ = Knit st on right side, purl st on wrong side (stocking st).

■ = Purl st on right side, knit st on wrong side.

Note 1: When working from Graphs, read odd numbered rows (right side rows) from right to left and even numbered rows (wrong side rows) from left to right.

Note 2: For each row, beg at appropriate edge for size being knitted and work to beg of rep, work rep until the number of sts after rep for selected size rem on left hand needle, then work these sts as indicated on Graph.

Graph B - Collar



Row 32: As 14th row.

Row 33: As 9th row.

Row 34: As 10th row.

Row 35: As 9th row.

Row 36: As 10th row.

Row 37: As 5th row.

Row 38: As 6th row.

Row 39: As 5th row.

Row 40: As 6th row.

Shape Sides

Keeping main patt correct, inc one st at each end of 5th row, then in every foll 6th row

until there are 103 (115, 127, 139) sts.

Work 7 rows patt.

Shape For Armholes

Keeping main patt correct, cast on 3 sts at beg of next 2 rows. 109 (121, 133, 145) sts. Tie a coloured thread at each end of last row to indicate beg of armholes.

Inc one st at each end of next (3rd, 3rd, 5th) row, then in every foll 6th row until there

are 127 (139, 151, 163) sts.

Work 0 (2, 4, 6) rows.

Shape Back Neck and Shoulders

Next Row: WS – Patt 43 (48, 53, 58), cast off 41 (43, 45, 47) sts, patt to end.

Cont on these 43 (48, 53, 58) sts for right side of neck.

Row 1: Cast off 9 (10, 12, 13) sts, patt to last 2 sts, patt 2tog.

Row 2: Patt 2tog, patt to end. Rep last 2 rows twice.

Cast off rem 10 (12, 11, 13) sts. With right side facing, join yarn to rem 43 (48, 53, 58) sts for left side of neck.

Row 1: Patt 2tog, patt to end.

Row 2: Cast off 9 (10, 12, 13) sts, patt to last 2 sts, patt 2tog. Rep last 2 rows twice.

Work 1 row patt.

Cast off rem 10 (12, 11, 13) sts.

LEFT FRONT

Using 4.00mm needles, cast on 62 (68, 74, 80) sts.

Beg Main Patt:

Work rows 1 to 40 incl from Graph A (page ?) as given for Left Front or written instructions as follows:

Row 1: P0 (0, 1, 0), K0 (0, 3, 0), P0 (0, 1, 0), K0 (1, 2, 0), P0 (2, 2, 0), K0 (3, 3, 0), P2 (2, 2, 0), K2 (2, 2, 0), P1, K3, P1, * K1, P1, K3, P1, K2, P2, K3, P2, K2, P1, K3, P1, rep from * to last 9 sts, K1, P1, K3, P1, K2, P1.
Row 2: K1, P2, K5, P1, * K5, P2, K2, P3, K2, P2, K5, P1, rep from * to last 9 (15, 21, 5) sts, K5, P2 (2, 2, 0), K2 (2, 2, 0), P0 (3, 3, 0), K0 (2, 2, 0), P0 (1, 2, 0), K0 (0, 5, 0).
Row 3: As 1st row.
Row 4: As 2nd row.
Row 5: K0 (0, 1, 0), P0 (0, 1, 0), K0 (0, 3, 0), P0 (0, 1, 0), K0 (2, 2, 0), P0 (2, 2, 0), K0 (1, 1, 0), P1 (2, 2, 0), K2 (2, 2, 0), P1 (1, 1, 0), K3, P1, K1, * K2, P1, K3, P1, K2, P2, K1, P2, K2, P1, K3, P1, K1, rep from * to last 9 sts, K2, P1, K3, P1, K2.
Row 6: P2, K5, P2, * P1, K5, P2, K2, P1, K2, P2, K5, P2, rep from * to last 9 (15, 21, 5) sts, P1, K5 (5, 5, 4), P2 (2, 2, 0), K1 (2, 2, 0), P0 (1, 1, 0), K0 (2, 2, 0), P0 (2, 2, 0), K0 (0, 5, 0), P0 (0, 1, 0).
Row 7: As 5th row.
Row 8: As 6th row.
Row 9: K0 (0, 2, 0), P0 (0, 1, 0), K0 (0, 3, 0), P0 (1, 1, 0), K0 (2, 2, 0), P0 (3, 3, 0), K2 (2, 2, 0), P1 (1, 1, 0), K3 (3, 3, 2), P1, K2, * P1, K2, P1, K3, P1, K2, P3, K2, P1, K3, P1, K2, rep from * to last 9 sts, P1, K2, P1, K3, P1, K1.
Row 10: P1, K5, P2, K1, * P2, K5, P2, K3, P2, K5, P2, K1, rep from * to last 9 (15, 21, 5) sts, P2, K5 (5, 5, 3), P2 (2, 2, 0), K0 (3, 3, 0), P0 (2, 2, 0), K0 (1, 5, 0), P0 (0, 2, 0).
Row 11: As 9th row.

Row 12: As 10th row.

Row 13: P0 (0, 1, 0), K0 (0, 2, 0), P0 (0, 1, 0), K0 (1, 3, 0), P0 (1, 1, 0), K0 (2, 2, 0), P0 (1, 1, 0), K1 (2, 2, 0), P1 (1, 1, 0), K3 (3, 3, 1), P1, K2, P1, * P2, K2, P1, K3, P1, K2, P1, K2, P1, K3, P1, K2, P1, rep from * to last 9 sts, P2, K2, P1, K3, P1.
Row 14: K5, P2, K2, * K1, P2, K5, P2, K1, P2, K5, P2, K2, rep from * to last 9 (15, 21, 5) sts, K1, P2, K5 (5, 5, 2), P1 (2, 2, 0), K0 (1, 1, 0), P0 (2, 2, 0), K0 (2, 5, 0), P0 (0, 2, 0), K0 (0, 1, 0).
Row 15: As 13th row.
Row 16: As 14th row.
Row 17: P0 (0, 2, 0), K0 (2, 2, 0), (P1, K3) 1 (2, 3, 0) times, P1, K2, P2, * K1, P2, K2, (P1, K3) 3 times, P1, K2, P2, rep from * to last 9 sts, K1, P2, K2, P1, K3.
Row 18: K4, P2, K2, P1, * K2, P2, K5, P3, K5, P2, K2, P1, rep from * to last 9 (15, 21, 5) sts, K2, P2, K5 (5, 5, 1), P0 (3, 3, 0), K0 (3, 5, 0), P0 (0, 2, 0), K0 (0, 2, 0).
Row 19: As 17th row.
Row 20: As 18th row.
Row 21: K0 (0, 1, 0), P0 (0, 2, 0), K0 (0, 2, 0), P0 (0, 1, 0), K0 (3, 3, 0), P0 (1, 1, 0), K0 (1, 1, 0), P0 (1, 1, 0), K3 (3, 3, 0), P1 (1, 1, 0), K2, P2, K1, * K2, P2, K2, P1, K3, P1, K1, P1, K3, P1, K2, P2, K1, rep from * to last 9 sts, K2, P2, K2, P1, K2.
Row 22: K3, P2, K2, P2, * P1, K2, P2, K5, P1, K5, P2, K2, P2, rep from * to last 9 (15, 21, 5) sts, P1, K2, P2, K4 (5, 5, 0), P0 (1, 1, 0), K0 (4, 5, 0), P0 (0, 2, 0), K0 (0, 2, 0), P0 (0, 1, 0).
Row 23: As 21st row.
Row 24: As 22nd row.
Row 25: As 17th row.
Row 26: As 18th row.
Row 27: As 17th row.
Row 28: As 18th row.
Row 29: As 13th row.
Row 30: As 14th row.

Row 31: As 13th row.

Row 32: As 14th row.
Row 33: As 9th row.
Row 34: As 10th row.
Row 35: As 9th row.
Row 36: As 10th row.
Row 37: As 5th row.
Row 38: As 6th row.
Row 39: As 5th row.
Row 40: As 6th row.

Shape Side

Keeping main patt correct, inc one st at beg of 5th row, then in every foll 6th row until there are 65 (71, 77, 83) sts.

Work 3 rows patt.

Beg Front Slope Shaping:

Keeping patt correct, dec one st at end of next row, then in every foll alt row 19 times, AT SAME TIME inc one st at beg of 3rd row, then in every foll 6th row 5 times. 51 (57, 63, 69) sts.

Work 1 row.

Shape for Armhole

Next Row: Cast on 3 sts, patt to last 2 sts, patt 2tog. 53 (59, 65, 71) sts.

Tie a coloured thread at beg of last row to indicate beg of armhole.

Keeping patt correct, dec one st at end of every foll alt row 25 (26, 27, 28) times, AT SAME TIME inc one st at beg of 2nd (4th, 4th, 6th) row, then in every foll 6th row 8 times. 37 (42, 47, 52) sts.

Work 1 (3, 3, 5) rows.

Shape Shoulder

Keeping patt correct, cast off 9 (10, 12, 13) sts at beg of next row, then in foll alt row twice. Work 1 row.

Cast off rem 10 (12, 11, 13) sts.

RIGHT FRONT

Using 4.00mm needles, cast on 62 (68, 74, 80) sts.

Beg Main Patt:

Work rows 1 to 40 incl from Graph A as given for Right Front or written instructions as follows:

Row 1: P1, K2, P1, K3, P1, * K1, P1, K3, P1, K2, P2, K3, P2, K2, P1, K3, P1, rep from * to last 10 (16, 0, 6) sts, K1 (1, 0, 1), P1 (1, 0, 1), K3 (3, 0, 3), P1 (1, 0, 1), K2 (2, 0, 0), P2 (2, 0, 0), K0 (3, 0, 0), P0 (2, 0, 0), K0 (1, 0, 0).
Row 2: P0 (1, 0, 0), K0 (2, 0, 0), P0 (3, 0, 0), K2 (2, 0, 0), P2 (2, 0, 0), K5 (5, 0, 5), P1 (1, 0, 1), * K5, P2, K2, P3, K2, P2, K5, P1, rep from * to last 8 sts, K5, P2, K1.
Row 3: As 1st row.
Row 4: As 2nd row.
Row 5: K2, P1, K3, P1, K1, * K2, P1, K3, P1, K2, P2, K1, P2, K2, P1, K3, P1, K1, rep from * to last 10 (16, 0, 6) sts, K2 (2, 0, 2), P1 (1, 0, 1), K3 (3, 0, 3), P1 (1, 0, 0), K2 (2, 0, 0), P1 (2, 0, 0), K0 (1, 0, 0), P0 (2, 0, 0), K0 (2, 0, 0).
Row 6: P0 (2, 0, 0), K0 (2, 0, 0), P0 (1, 0, 0), K1 (2, 0, 0), P2 (2, 0, 0), K5 (5, 0, 4), P2 (2, 0, 2), * P1, K5, P2, K2, P1, K2, P2, K5, P2, rep from * to last 8 sts, P1, K5, P2.
Row 7: As 5th row.
Row 8: As 6th row.
Row 9: K1, P1, K3, P1, K2, * P1, K2, P1, K3, P1, K2, P3, K2, P1, K3, P1, K2, rep from * to last 10 (16, 0, 6) sts, P1 (1, 0, 1), K2 (2, 0, 2), P1 (1, 0, 1), K3 (3, 0, 2), P1 (1, 0, 0), K2 (2, 0, 0), P0 (3, 0, 0), K0 (2, 0, 0), P0 (1, 0, 0).
Row 10: K0 (1, 0, 0), P0 (2, 0, 0), K0 (3, 0, 0), P2 (2, 0, 0), K5 (5, 0, 3), P2 (2, 0, 2), K1 (1, 0, 1), * P2, K5, P2, K3, P2, K5, P2, K1, rep from * to last 8 sts, P2, K5, P1.
Row 11: As 9th row.
Row 12: As 10th row.
Row 13: P1, K3, P1, K2, P1, *



P2, K2, P1, K3, P1, K2, P1, K2, P1, K3, P1, K2, P1, rep from * to last 10 (16, 0, 6) sts, P2 (2, 0, 2), K2 (2, 0, 2), P1 (1, 0, 1), K3 (3, 0, 1), P1 (1, 0, 0), K1 (2, 0, 0), P0 (1, 0, 0), K0 (2, 0, 0), P0 (1, 0, 0), K0 (1, 0, 0).

Row 14: K0 (2, 0, 0), P0 (2, 0, 0), K0 (1, 0, 0), P1 (2, 0, 0), K5 (5, 0, 2), P2 (2, 0, 2), K2 (2, 0, 2), * K1, P2, K5, P2, K1, P2, K5, P2, K2, rep from * to last 8 sts, K1, P2, K5.

Row 15: As 13th row.

Row 16: As 14th row.

Row 17: K3, P1, K2, P2, * K1, P2, K2, (P1, K3) 3 times, P1, K2, P2, rep from * to last 10 (16, 0, 6) sts, K1 (1, 0, 1), P2 (2, 0, 2), K2 (2, 0, 2), (P1, K3) 1 (2, 0, 0) times, P1 (1, 0, 1), K0 (2, 0, 0).

Row 18: K0 (3, 0, 0), P0 (3, 0, 0), K5 (5, 0, 1), P2 (2, 0, 2), K2 (2, 0, 2), P1 (1, 0, 1), * K2, P2, K5, P3, K5, P2, K2, P1, rep from * to last 8 sts, K2, P2, K4.

Row 19: As 17th row.

Row 20: As 18th row.

Row 21: K2, P1, K2, P2, K1, * K2, P2, K2, P1, K3, P1, K1, P1, K3, P1, K2, P2, K1, rep from * to last 10 (16, 0, 6) sts, K2 (2, 0, 2), P2 (2, 0, 2), K2 (2, 0, 2), P1 (1, 0, 0), K3 (3, 0, 0), P0 (1, 0, 0), K0 (1, 0, 0), P0 (1, 0, 0), K0 (3, 0, 0).

Row 22: K0 (4, 0, 0), P0 (1, 0, 0), K4 (5, 0, 0), P2 (2, 0, 2), K2 (2, 0, 2), P2 (2, 0, 2), * P1, K2, P2, K5, P1, K5, P2, K2, P2, rep from * to last 8 sts, P1, K2, P2, K3.

Row 23: As 21st row.

Row 24: As 22nd row.

Row 25: As 17th row.

Row 26: As 18th row.

Row 27: As 17th row.

Row 28: As 18th row.

Row 29: As 13th row.

Row 30: As 14th row.

Row 31: As 13th row.

Row 32: As 14th row.

Row 33: As 9th row.

Row 34: As 10th row.

Row 35: As 9th row.

Row 36: As 10th row.

Row 37: As 5th row.

Row 38: As 6th row.

Row 39: As 5th row.

Row 40: As 6th row.

Shape Side

Keeping main patt correct, inc one st at end of 5th row, then in every foll 6th row until there are 65 (71, 77, 83) sts. Work 3 rows patt.

Beg Front Slope Shaping

Keeping patt correct, dec one st at beg of next row, then in every foll alt row 20 times, AT SAME TIME inc one st at end of 3rd row, then in every foll 6th row 5 times. 50 (56, 62, 68) sts.

Shape for Armhole

Next Row: Cast on 3 sts, patt to end. 53 (59, 65, 71) sts.

Tie a coloured thread at beg of last row to indicate beg of armhole.

Keeping patt correct, dec one st at beg of next row, then in every foll alt row 24 (25, 26, 27) times, AT SAME TIME inc one st at end of next (3rd, 3rd, 5th) row, then in every foll 6th row 8 times. 37 (42, 47, 52) sts.

Work 2 (4, 4, 6) rows.

Shape Shoulder

Work as given for Left Front shoulder shaping.

SLEEVES

Using 4.00mm needles, cast on 54 (54, 58, 58) sts.

Row 1: K2, * P2, K2, rep from * to end.

Row 2: P2, * K2, P2, rep from * to end.

Rep last 2 rows 5 times, inc one st in last row. 55 (55, 59, 59) sts, 12 rows rib in all.

Beg Main Patt:

Work rows 1 to 6 incl from Graph A or written instructions as follows:

Row 1: K0 (0, 2, 2), P1, K3, P1, * K1, P1, K3, P1, K2, P2, K3, P2, K2, P1, K3, P1, rep from * to last 6 (6, 8, 8) sts, K1, P1, K3, P1, K0 (0, 2, 2).

Row 2: P0 (0, 2, 2), K5, P1, * K5, P2, K2, P3, K2, P2, K5, P1, rep from * to last 5 (5, 7, 7) sts, K5, P0 (0, 2, 2).

Row 3: As 1st row.

Row 4: As 2nd row.

Row 5: (K1, P1) 0 (0, 1, 1) times, K3, P1, K1, * K2, P1, K3, P1, K2, P2, K1, P2, K2, P1, K3, P1, K1, rep from * to last 6 (6, 8, 8) sts, K2, P1, K3, (P1, K1) 0 (0, 1, 1) times.

Row 6: P0 (0, 1, 1), K4 (4, 5, 5), P2, * P1, K5, P2, K2, P1, K2, P2, K5, P2, rep from * to last 5 (5, 7, 7) sts, P1, K4 (4, 5, 5), P0 (0, 1, 1).

Keeping main patt correct as placed in last 6 rows, noting there are 40 rows in main

patt rep (as for body) and working extra sts into patt, inc one st at each end of next row, then in every foll 4th row until there are 61 (79, 83, 95) sts, then in every foll 6th row until there are 89 (95, 99, 103) sts.

Cont without further shaping until sleeve measures 43cm from beg, working last row on wrong side.

Cast off loosely.

COLLAR

Join shoulder seams. With right side facing, using 4.00mm circular needle, beg at lower edge of right front shaping, knit up 76 (76, 76, 82) sts evenly along right front shaping, knit up 10 sts evenly along back neck shaping, knit up 45 (45, 45, 51) sts evenly along sts cast off at back

neck, knit up 10 sts evenly along back neck shaping, then knit up 76 (76, 76, 82) sts evenly along left front shaping. 217 (217, 217, 235) sts.

Beg Patt:

Work rows 1 to 16 incl from Graph B or written instructions as folls:

Row 1: P1, * (K2, P2) twice, K1, (P2, K2) twice, P1, rep from * to end.

Row 2 and foll alt rows: Knit all knit sts and purl all purl sts as they appear.

Row 3: As 1st row.

Row 5: P1, * P1, K2, P2, K2, P3, (K2, P2) twice, rep from * to end.

Row 7: As 5th row.

Row 9: K1, * (P2, K2) twice, P1, (K2, P2) twice, K1, rep from * to end.

Row 11: As 9th row.

Row 13: K1, * K1, P2, K2, P2, K3, (P2, K2) twice, rep from * to end.

Row 15: As 13th row.

Row 16: Knit all knit sts and purl all purl sts as they appear.

Rows 1 to 16 incl form collar patt

Work a further 31 rows patt. Cast off loosely in patt.

MAKING UP

Do not press. Placing centre of sleeve to shoulder seam, sew sleeves in position between coloured threads. Join side and sleeve seams. Fold collar onto right side.

Wool available.

Patons

Ph: 1800 337 032

www.patonsyarn.com.au

KNITTING YARNS BY MAIL

www.knittingyarns.com.au



Your one stop shop for the very best yarns, knitting patterns, needles and accessories.

FREE catalogue now available

Knitting yarns by mail
114 Fox & Fances Rd, Boolarra Sth, Vic 3870
alison@knittingyarns.com.au Ph: 0408 992 927

Alchemy Yarns Kollage Yarns Cascade
Noro Kaalund Yarns WOOLganic
Araucania Mountain Colors
Dream in Color Lorna's Laces Knit Pro

Yay! for yarn..

*Beautiful yarns and accessories
from around the world.*



www.yayforyarn.com.au

ph: 07 3264 7384

email: info@yayforyarn.com.au

BABY'S FIRST SPRING BEANIE

Cute as a button, this easy beanie made in Zara and using Fleur as a feature is simple and sweet.



SKILL LEVEL



WHAT YOU'LL NEED

Yarn

1 x 50gm ball Filatura di crosse Zara
1 x 50gm Fleur

Needles

3.25mm knitting needles
4.00mm knitting needles
Wool sewing needle

Tension

22st by 28 rows to 10cm measured over st.st using 4.00mm needles

Using 3.25mm needles and Zara cast on 79sts.

Row 1: K1 * p1, k1, repeat to end of row.

Row 2: * P1, k1, repeat to last stitch, P1.
Repeat rows 1 and 2 for a total of 12 rows.

Changing to 4.00mm needles.

Row 1: Knit.

Row 2: Purl.

Row 3: Using Fleur as contrast Knit.

Row 4: Purl.

Row 5: Using Zara Knit.

Row 6: Purl.

Repeat Rows 5 and 6 until hat measures 13cm.

Shape crown:

Row 1: K1 * k2tog, k6 * repeat to end of row.

Row 2 and each alternate row: Purl.

Row 3: K1 * k2tog, K5 * repeat to end of row.

Row 5: K1 * k2tog, K4 * repeat to end of row.

Row 7: K1 * k2tog, K3 * repeat to end of row.

Row 9: K1 * k2tog, K3 * repeat to end of row.

Row 11: K1 * k2tog, K2 * repeat to end of row.

Row 13: K1 * K2tog, K1 * repeat to end of row.

Break off yarn and thread through remaining 11sts pulling firmly.

MAKING UP

Using mattress stitch, stitch side seam.

Trim:

Cut the Fleur evenly between florettes (start with about 15) and, using a crochet hook,

thread the ends through the inside of the hat, tying firmly. If you wish, thread the ends through the back of the work. Place as many (or as few) as you prefer, at random places around the hat.

Tasmanian Wool Suppliers P/L

58 Main Road, Moonah Tas
Ph: 03 6278 1800

www.wool suppliers.com.au

MEASUREMENTS

SIZE	0-6MTHS

ASHES OF ROSES

This lacy soft Kid Mohair blend delicate scarf is worked in a subtle array of colours. It is the perfect accessory to add romance and softness to any outfit.



SKILL LEVEL



WHAT YOU'LL NEED

Yarn

2 x 50 gm balls x Fibra Natura Kid Mohair in colour Imperial Palace

Needles

5.00mm crochet Hook

Tension

As per wool

Special abbreviations

2 tr cluster: Work 2 tr in next st, leaving last loop of each st on hook – 3 loops on hook, yo, pull through all 3 loops on hook
dtr: double Treble

WORKING THE PATTERN

With 5.00mm hook work a loose chain of 193 chain.

Row 1: Working in back loops of chain only, 1 ch, 1 dc in each ch to end, turn. 193 dc.

Row 2: 4 ch (counts as 1 dtr throughout), 2 dtr in first dc, * 2 ch, miss next 2 dc, 3 dtr in next dc * rep from * to end. 65

groups.

Row 3: 4 ch, dtr in first dtr, dtr in next dtr, 2 dtr in next dtr, * 2 ch, miss next 2 ch sp, 2 dtr in next dtr, 1 dtr in next dtr, 2 dtr in next dtr * rep from * to end.

Row 4: 4 ch, miss 1 dtr, 1 dtr in next 2 dtr, * 2 ch, (1 tr, 2ch, 1 tr) in next 2 ch space, 2 ch, miss 1 dtr, 1 dtr in next 3 dtr, * rep from * to end.

Row 5: 4 ch, 1 dtr in next dtr, 2 ch, * miss 2ch, and into centre 2 ch space work (2 tr cluster, 2 ch) 4 times, miss 2 ch and 1dtr, 1 tr in next dtr, 2 ch, rep from * ending last repeat omitting final 2ch. Fasten off.

MAKING UP

Rejoin yarn to foundation

chain and working in front loop only repeat Rows 1 to 5 down other side of scarf. With wool needle sew row edges together at both ends of scarf.

The Wool Inn

Shop 14 NK Centre
450 High Street, Penrith
Ph: 02 4732 2201

LONG LINE VEST

Design by Twilleys of Stamford Design



SKILL LEVEL



intermediate

WHAT YOU'LL NEED

Yarn

7 (8, 8, 9, 9, 10) 50g balls
Twilleys Gorgeous DK

Needles

3.25mm knitting needles
4.00mm knitting needles
3.25mm circular knitting
needle

Tension

24 stitches by 30 rows to
10cm over stocking stitch
using 4mm needles

Special abbreviations

psso – pass slipped st
over;
sl 1 – slip one st

HAND KNIT YARNS by

Naturally
IT'S PURE
NEW ZEALAND

STITCH GUIDE

Notes: Instructions in square brackets [] should be repeated the number of times given after the brackets.

BACK

Using 3.25mm needles, cast on 122 (126, 134, 138, 146, 150) sts.

Row 1: RS – K2, * P2, K2, rep from * to end.

Row 2: P2, * K2, P2, rep from * to end.

These 2 rows form rib.

Work in rib for a further 10 rows, dec 1 (0, 1, 0, 1, 0) st at each end of last row and end with a WS row. 120 (126, 132, 138, 144, 150) sts.

Change to 4mm needles. ** Starting with a K row, work in st st for 8 rows, end with a WS row.

Dec 1 st at each end of next and every foll 10th row until 104 (110, 116, 122, 128, 134) sts rem.

Cont straight until Back measures 42 (43, 44, 44, 45)cm, end with a WS row.

Shape for Cap Sleeves

Inc 1 st at each end of next 4 rows, end with a ws row. 112 (118, 124, 130, 136, 142) sts. Place markers at both ends of last row to denote base of armholes.

Inc 1 st at each end of 3rd and every foll 4th row until there are 140 (146, 154, 160, 168, 174) sts.

Work 3 (3, 1, 1, 1, 1) rows, end with a WS row.

Shape Shoulders

Cast off 4 (4, 4, 4, 5, 5) sts at beg of next 18 (14, 6, 2, 16, 10) rows, then 5 (5, 5, 5, 6, 6) sts at beg of foll 4 (8, 16, 20, 6, 12) rows.

Cast off rem 48 (50, 50, 52, 52, 52) sts.

POCKET BACK

Using 4mm needles, cast on 62 sts.

Starting with a K row, work in st st for 14 rows, end with a WS row.

Break yarn and leave sts on a holder.

FRONT

Work as given for Back to **.

Starting with a K row, work in st st for 14 rows, dec 1 st at each end of 9th of these rows and end with a WS row. 118 (124, 130, 136, 142, 148) sts.

Place Pocket

Next row: RS – K28 (31, 34, 37, 40, 43), slip next 62 sts onto a holder and, in their place, K across 62 sts of Pocket Back, K to end.

Cont in st st, dec 1 st at each end of 4th and 2 foll 10th rows. 112 (118, 124, 130, 136, 142) sts.

Work 8 rows, end with a rs row.

Next row: WS – P36 (39, 42, 45, 48, 51), cast off next 40 sts, P to end.

Break yarn.

Return to 62 sts left on holder and rejoin yarn with RS facing. Cont in st st on these 62 sts

for Pocket Front as follows:

Dec 1 st at each end of 3rd and 10 foll 3rd rows – 40 sts.

Work 1 row, end with a WS row. Break yarn.

Join Sections

With RS facing, work across first set of 36 (39, 42, 45, 48, 51) sts of main section as follows: K2tog, K to end, knit across 40 sts of Pocket Front, then work across rem set of 36 (39, 42, 45, 48, 51) sts of main section as follows: K to last 2 sts, K2tog. 110 (116, 122, 128, 134, 140) sts.

Dec 1 st at each end of 10th and every foll 10th row until 104 (110, 116, 122, 128, 134) sts rem.

Cont straight until 24 rows less have been worked than on Back to start of cap sleeve shaping, end with a WS row.

Divide for Neck

Next row: RS – K52 (55, 58, 61, 64, 67) and turn, leaving rem sts on a holder.

Work on this set of sts for first side of neck.

Dec 1 st at neck edge of 4th and 4 foll 4th rows. 47 (50, 53, 56, 59, 62) sts.

Work 3 rows, end with a ws row.

Shape for Cap Sleeves

Inc 1 st at beg of next row and at same edge on foll 3 rows, end with a ws row, and at same time dec 1 st at neck edge of next row. 50 (53, 56, 59, 62, 65) sts.

Place marker at end of last row to denote base of armhole.

Inc 1 st at beg of 3rd and 13 (13, 14, 14, 15, 15) foll 4th rows and at same time dec 1 st at neck edge of next and every foll 4th row. 50 (53, 56, 59, 62, 65) sts.

Work 3 (3, 1, 1, 1, 1) rows, dec 1 (1, 0, 0, 0, 0) st at neck edge of 2nd (2nd, 0, 0, 0, 0) of these rows and end with a WS row. 49 (52, 56, 59, 62, 65) sts.

Shape Shoulder

Cast off 4 (4, 4, 4, 5, 5) sts at beg of next and foll 8 (6, 2, 0, 7, 4) alt rows, then 5 (5, 5, 5, 6, 6) sts at beg of foll 1 (3, 7, 9, 2, 5) alt rows and at same time dec 1 st at neck edge of 3rd (3rd, next, next, next, next) and 2 (3, 3, 4, 3, 3) foll 4th rows.

Work 1 row.

Cast off rem 5 (5, 5, 5, 6, 6) sts.

With RS facing, rejoin yarn to rem sts, K to end. 52 (55, 58, 61, 64, 67) sts.

MEASUREMENTS

TO FIT BUST CM	81	86	91	97	102	107
FINISHED FIT CM	87	92	97	102	107	112
GARMENT LENGTH CM	70	71	72	73	74	75

LONG LINE VEST



Complete to match first side, reversing shapings.

NECKBAND

Join both shoulder seams. With RS facing and using 3.25mm circular needle, starting and ending at left shoulder seam, pick up and knit 105 (105, 109, 109, 113, 113) sts down left side of neck, place marker on needle, pick up and knit 105 (105, 109, 109, 113, 113) sts up right side of neck, then 46 (50, 50, 50, 50, 50) sts from back. 256 (260, 268, 268, 276, 276) sts.

Round 1: RS – *K2, P2, rep from * to end.

This round sets position of rib. Keeping rib correct, cont as follows:

Round 2: rib to within 2 sts of marker, K2tog, slip marker

onto right needle, sl 1, K1, psso, rib to end. Rep last round 8 times more. 238 (242, 250, 250, 258, 258) sts. Cast off in rib, still decreasing either side of marker as before.

ARMHOLE BORDERS (BOTH ALIKE)

With RS facing and using 3.25mm needles, pick up and knit 114 (114, 118, 118, 126, 126) sts evenly along armhole edge between markers. Starting with row 2, work in rib as given for Back for 5 rows, dec 1 st at each end of 2nd and foll alt row and end with a WS row.

Cast off rem 110 (110, 114, 114, 122, 122) sts in rib.

POCKET BORDERS (BOTH ALIKE)

With RS facing and using 3.25mm needles, pick up and knit 34 sts evenly along shaped row-end edge of pocket opening. Starting with Row 2, work in rib as given for Back for 5 rows, ending with a WS row. Cast off in rib.

TO MAKE UP

Join side and armhole border seams. Sew pocket back in place on inside, then neatly sew down ends of pocket borders.

Wool available.

Wentworth Distributors NZ Ltd

Free phone AU: 1800 150 542

Free phone NZ: 0800 738 998

www.NaturallyYarnsNZ.com

...run by... Knitters & Knitters

Woolshed

@manuka

Gypsy Squares
blanket kit available from
Woolshed @ Manuka or from
www.woolshed.com.au

- Jo Sharp
- Noro
- Debbie Bliss
- Sublime
- Addi Needles
- Heirloom
- Filatura di Crosa
- Biggan Design
- Supreme Possum

Knitting and
Crochet classes

\$189.95 (incl. P&H)

Manuka Court, Bougainville St
Manuka ACT 2603
Ph: 02 6295 0061
www.woolshed.com.au
e: shop@woolshed.com.au

HEIRLOOM The Australian Yarn Company

8 PLY
EASY CARE
PREMIUM MACHINE WASHABLE WOOL
HEIRLOOM
50 GRAMS NET AT STANDARD CONDITION

*Heirloom Yarns available
from your favourite wool shop*

03 9770 8155 for stockists
www.rdmorgan.com.au



 **Patons**



Playtime Knits

Patons London 8 ply is a fun, versatile yarn with a happy spark of colour to give plain knitting a playtime feel. Brighten your child's winter wardrobe with one of these classic designs from Patons Book 8006. Available at all good knitting stores. Phone 1800 337 032 for your nearest stockist.

www.ausplanners.com.au
1800 337 032

Patons. Quality yarn since 1923.

CAP SLEEVE TUNIC

Design by Twilleys of Stamford Design



SKILL LEVEL



advanced

WHAT YOU'LL NEED

Yarn

3 (4, 4, 4) 50g Balls
Twilleys Freedom
Gorgeous DK
3 buttons

Needles

3.25mm knitting needles
4.00mm knitting needles

Tension

22 sts and 28 rows to
10cm over st st using
4mm needles.

HAND KNIT YARNS *by*

Naturally
IT'S PURE
NEW ZEALAND

STITCH GUIDE

When working lace patt from chart, do NOT work the (yfwd) increase unless there are sufficient sts to work the corresponding decrease so that number of sts remains constant.

BACK

Using 3.25mm needles, cast on 73 (81, 89, 97) sts.

Work in g st for 4 rows, end with a WS row.

Change to 4mm needles.

Starting with a K row, work in st st, shaping side seams by dec 1 st at each end of 3rd (3rd, 7th, 7th) and every foll 8th row until 61 (67, 73, 79) sts rem.

Cont straight until back measures 20 (23, 27, 30)cm, end with a WS row.

Shape Armholes

Cast off 3 sts at beg of next 2 rows. 55 (61, 67, 73) sts.

Next row: RS – K2, K2tog, K to last 4 sts, sl 1, K1, psso, K2.

Next row: P2, P2tog tbl, P to last 4 sts, P2tog, P2.

Working all armhole decreases as set by last 2 rows, dec 1 st at each end of next and foll 1 (2, 3, 4) alt rows. 47 (51, 55, 59) sts.

Cont straight until armhole measures 12 (13, 14, 15) cm, end with a WS row.

Shape Shoulders and Back Neck

Next row: RS – cast off 5 (6, 6, 7) sts, K until there are 9

(9, 10, 10) sts on right needle and turn, leaving rem sts on a holder.

Work on this set of sts only for first side of neck.

Cast off 3 sts at beg of next row.

Cast off rem 6 (6, 7, 7) sts.

Return to sts left on holder, rejoin yarn with RS facing, cast off centre 19 (21, 23, 25) sts and K to end.

Cast off 5 (6, 6, 7) sts at beg of next row, then 3 sts at beg of foll row.

Cast off rem 6 (6, 7, 7) sts.

LEFT FRONT

Using 3.25mm needles, cast on 36 (40, 44, 48) sts.

Work in g st for 4 rows, ending with a WS row.

Change to 4mm needles.

Starting with a K row, work in st st, shaping side seams by dec 1 st at beg of 3rd (3rd, 7th, 7th) and every foll 8th row until 30 (33, 36, 39) sts rem.

Cont straight until 2 rows less have been worked than on back to start of armhole shaping, end with a WS row.

Starting and ending rows as indicated and repeating the 12 row patt repeat throughout, now work in patt following chart for left front as follows:

Work 2 rows, end with a WS row.

Shape Armhole

Keeping patt correct, cast off 3 sts at beg of next row. 27 (30, 33, 36) sts.

Work 1 row.

Next row: RS – K2, K2tog, patt to end.

Next row: patt to last 4 sts, P2tog, P2.

Working all armhole decreases as set by last 2 rows (and keeping armhole edge 2 sts in st st throughout), dec 1 st at armhole edge of next and foll 1 (2, 3, 4) alt rows. 23 (25, 27, 29) sts.

Cont straight until 15 (15, 17, 17) rows less have been worked than on back to start of shoulder shaping, end with a RS row.

Shape Neck

Keeping patt (and armhole edge 2 sts in st st) correct as set, cast off 4 (5, 5, 6) sts at beg of next row. 19 (20, 22, 23) sts.

Dec 1 st at neck edge of next 5 rows, then on foll 3 (3, 4, 4) alt rows. 11 (12, 13, 14) sts.

Work 3 rows, end with a WS row.

Shape Shoulder

Cast off 5 (6, 6, 7) sts at beg of next row.

Work 1 row.

Cast off rem 6 (6, 7, 7) sts.

RIGHT FRONT

Using 3.25mm needles, cast on 36 (40, 44, 48) sts.

Work in g st for 4 rows, end with a WS row.

Change to 4mm needles.

Starting with a K row, work in st st, shaping side seams by dec 1 st at end of 3rd (3rd, 7th, 7th) and every foll 8th row until 30 (33, 36, 39) sts rem.

Cont straight until 2 rows less have been worked than on back to start of armhole shaping, end with a WS row. Starting and ending rows as indicated and repeating the 12 row patt repeat throughout, now work in patt following chart for right front as follows: Work 3 rows, end with a RS row.

Shape Armhole

Keeping patt correct, cast off 3 sts at beg of next row. 27 (30, 33, 36) sts.

Next row: RS – patt to last 4 sts, sl 1, K1, psso, K2.

Next row: P2, P2tog tbl, patt to end.

Working all armhole decreases as set by last 2 rows (and keeping armhole edge 2 sts in st st throughout), dec 1 st at armhole edge of next and foll

MEASUREMENTS

SIZE – YEARS	2	3	5	7
TO FIT CHEST CM	51	56	61	66
FINISHED FIT CM	55	61	66	72
GARMENT LENGTH CM	32	36	41	45
SLEEVE LENGTH CM	2			



1 (2, 3, 4) alt rows. 23 (25, 27, 29) sts.
Cont straight until 14 (14, 16, 16) rows less have been worked than on back to start of shoulder shaping, end with a WS row.

SHAPE NECK

Keeping patt (and armhole edge 2 sts in st st) correct as set, cast off 4 (5, 5, 6) sts at beg of next row. 19 (20, 22, 23) sts.
Dec 1 st at neck edge of next 5 rows, then on foll 3 (3, 4, 4) alt rows. 11 (12, 13, 14) sts.
Work 3 rows, end with a RS row.

Shape Shoulder

Cast off 5 (6, 6, 7) sts at beg of next row.
Work 1 row.
Cast off rem 6 (6, 7, 7) sts.

SLEEVES

Using 3.25mm needles, cast on 53 (57, 61, 65) sts.
Work in g st for 4 rows, end with a WS row.
Change to 4mm needles. Starting and ending rows as indicated and repeating the 12 row patt repeat throughout, now work in patt following chart for sleeves as follows:
Work 2 rows, end with a WS row.

Shape Top

Keeping patt correct, cast off 3 sts at beg of next 2 rows. 47 (51, 55, 59) sts.
Next row: RS – K2, K2tog, patt to last 4 sts, sl 1, K1, psso, K2.
Next row: P2, P2tog tbl, patt to last 4 sts, P2tog, P2.
Rep last 2 rows 4 (5, 6, 7) times more. 27 sts.
Cast off 4 sts at beg of next 4 rows.
Cast off rem 11 sts.

NECKBAND

Join both shoulder seams.
With RS facing and using 3.25mm needles, starting

and ending at front opening edges, pick up and knit 19 (20, 22, 23) sts up right side of neck, 25 (27, 29, 31) sts from back, then 19 (20, 22, 23) sts down left side of neck. 63 (67, 73, 77) sts.
Work in g st for 4 rows, end with a RS row.
Cast off knitwise (on WS).

BUTTON BAND

With RS facing and using 3.25mm needles, starting at cast-off edge of neckband, pick up and knit 61 (70, 79, 88) sts evenly down left front opening edge to cast-on edge.
Work in g st for 4 rows, end with a RS row.
Cast off knitwise (on WS).

BUTTONHOLE BAND

With RS facing and using 3.25mm needles, starting at cast-on edge, pick up and knit 61 (70, 79, 88) sts evenly up right front opening edge to cast-off edge of neckband.
Row 1: WS – knit.

Row 2: K to last 20 (22, 24, 26) sts, [yfwd, K2tog, K6 (7, 8, 9)] twice, yfwd, K2tog, K2.
Work in g st for a further 2 rows, end with a RS row.
Cast off knitwise (on WS).

MAKING UP

Join side seams. Join sleeve seams. Insert sleeves into armholes. Sew on buttons.

Wool available.

Wentworth Distributors NZ Ltd

Free phone AU: 1800 150 542
Free phone NZ: 0800 738 998
www.NaturallyYarnsNZ.com



Tasmanian Wool Suppliers Pty Ltd

Quality product - friendly service

Tasmania's largest range of local
& imported yarns, patterns, etc.

Jo Sharp
Heirloom
Naturally
Opal
Rowan
Filatura di Crosse
Patons
& Tasmania's distributor
of Ashford products

58 Main Road Moonah 7009
03 6278 1800



Sassafras Wool Store

Stocking quality Australian & International yarns

Including:

- Noro • Anny Blatt • The Rare Yarn Company
- Touchyarns • Filatura Di Crosa • Opal and more



Shop 2/372 Mt Dandenong Tourist Road,
Sassafras, Victoria, 3787
Store Hours 10am – 5.00pm 7 days per week.

Phone (03) 9755 2510

BIGGAN DESIGN

WRAP YOURSELF IN COLOUR

100% Australian Merino First Cross 8Ply Yarn
in a Designer Palette of 64 Harmonised Colours

'So Soft You Can Wear It On Your Skin'

WORLDWIDE DELIVERY
Tel: +61 (0) 7 3378 4453

The Entire Range of Products are Available at:
www.biggandesign.com

LACE WAVE WRAP

Wrap yourself in baby Alpaca and silk. This is a simple but lacy wave wrap.



MEASUREMENTS

SIZE CM 52 X 184

SKILL LEVEL



WHAT YOU'LL NEED

Yarn

4 x 50 gram balls Eki Riva Natal – baby Alpaca, silk and Polyamide.

Needles

12mm knitting needles

Tension

Not critical

WRAP

Cast on 53 stitches. Wave pattern is created in multiples of 12 plus 5 stitches as follows:

Rows 1 to 4: Knit.

Rows 5, 7, 9 and 11: K3, * (K2tog, 2 times); (yfwd, K1, 3 times); yfwd; (K2tog, 2 times), K1; rep from * to last 2 sts; K2.

Rows 6, 8, 10 and 12: K2, purl to last 2 sts, K2.

Work rows 1 to 12 a total of 15 times.

Knit 4 rows.

Cast off all sts loosely. Weave in all ends and gently press to block wave lace pattern, taking care that both ends have the same wave shape.

Wools available.

The Ardent Alpaca

2/35 Camp Street

Beechworth Vic

Ph: 03 5728 2205

www.ardentalpaca.com.au

HAND TOWEL AND FACE WASHER SET

There is nothing quite like the feel of hand knitted cotton on the skin. This design requires a little extra patience and concentration, but is well worth the effort.



SKILL LEVEL



WHAT YOU'LL NEED

Yarn

3 balls x 8 ply Heirloom cotton

Needles

3.75mm knitting needles

Tension

23sts to 10cm over stocking stitch using 3.75mm needles.

STITCH GUIDE

Moss stitch pattern:

Row 1: * K1, P1, rep from * to end.

Row 2: * P1, K1, rep from * to end.

These 2 rows form moss stitch pattern.

Mock cable pattern:

Row 1: (K1, P1) twice, K1, * P4, K1, P1, K4, rep from * to last 5

sts, (P1, K1) twice, P1.

Row 2: (P1, K1) twice, P1, * P3, K2, P2, K3, rep from * to last 5 sts, K1, P1, K1, P1, K1.

Row 3: (K1, P1) twice, K1, * P2, K2, P1, K1, P2, K2, rep from * to last 5 sts, (P1, K1) twice, P1.

Row 4: (P1, K1) twice, P1, * P1, (K2, P2) twice, K1, rep from * to last 5 sts, K1, P1, K1, P1, K1.

Row 5: (K1, P1) twice, K1, * K2, P3, K3, P2, rep from * to last 5

sts, (P1, K1) twice, P1.

Row 6: (P1, K1) twice, P1, * K1, P4, K4, P1, rep from * to last 5 sts, (K1, P1) twice, K1.

These six rows form mock cable pattern.

HAND TOWEL:

Cast on 90 sts.

Work 6 rows moss stitch pattern, ending with a Row 2. Work in mock cable pattern until work measures 48.5cm from beginning.

Work 6 rows moss stitch pattern, ending with a Row 2. Cast off.

FACE WASHER:

Cast on 70 sts.

Work 6 rows moss stitch pattern, ending with a Row 2. Work in mock cable pattern until work measures 23.5cm. Work 6 rows moss stitch pattern, ending with a Row 2. Cast off.

Yarns available.

Knitting Yarns by Mail

114 Fox and Fances Road
Boolarra Sth, Vic 3870
Ph: 0408 992 927

www.knittingyarns.com.au

MEASUREMENTS

HAND TOWEL CM 33 X 50

FACE WASHER CM 25 X 25

TWO COLOUR GARTER RIB JUMPER

An easy knit using Dreamtime 4 ply for your little one.



BACK

Using 3.25mm needles and M, cast on 57 (63, 69, 75, 75, 81) sts.

Next row: WS – Knit.

Beg patt:

Row 1: RS – Using C, K3, * P3, K3, rep from * to end.

Row 2: As 1st row.

Row 3: Using M, K3, * P3, K3, rep from * to end.

Row 4: As 3rd row.

Rows 1 to 4 incl form patt.

Work a further 16 (24, 24, 28, 28, 32) rows patt.

Break off C.

Using M only for rem, cont in patt (as in last 2 rows) until work measures 12 (15, 17, 18, 20, 21) cm from beg, working last row on wrong side.

Shape Armholes

Keeping patt correct, cast off 3 (4, 4, 4, 4) sts at beg of next 2 rows. 51 (55, 61, 67, 67, 73) sts.

Dec one st at each end of next row, then in every foll alt row until 47 (49, 55, 59, 59, 65) sts rem. **

Cont in patt without shaping until work measures 22 (26, 29, 31, 33, 35) cm from beg, working last row on wrong side.

Shape Shoulders

Cast off 4 (4, 5, 5, 5, 6) sts at beg of next 4 rows, then 4 (4, 4, 6, 6, 6) sts at beg of foll 2 rows.

Cast off rem 23 (25, 27, 27, 27, 29) sts loosely in patt.

FRONT

Work as for Back to **.

Work 1 row.

Divide For V Neck

Next row: Patt 23 (24, 27, 29, 29, 32), turn.

*** Cont on these 23 (24, 27, 29, 29, 32) sts.

Dec one st at neck edge in every foll alt row until 17 (18, 21, 25, 25, 29) sts rem, then in every foll 4th row until 12 (12, 14, 16, 16, 18) sts rem.

Cont in patt without shaping until work measures same as Back to beg of shoulder shaping, working last row on wrong side.

Shape Shoulder

Cast off 4 (4, 5, 5, 5, 6) sts at beg of next row and foll alt row.

Work 1 row. Cast off rem 4 (4, 4, 6, 6, 6) sts. ***

With right side facing, join M to rem sts, K2tog, patt to end. Rep from *** to ***, working 1 row more before shoulder shaping.

SLEEVES

Using 3.25mm needles and M, cast on 33 (39, 39, 39, 39, 39) sts.

Next row: WS – Knit.

Beg patt: Work 20 (28, 28, 32, 32, 36) rows patt as for Back, AT SAME TIME working

extra sts into patt, inc one st at each end of 5th row, then in every foll 6th (10th, 12th, 10th, 10th, 8th) row 2 (1, 1, 2, 2, 1) time/s, sizes 3 and 18 months only, then in every foll, (12th, 10th) row (1, 2) time/s. Break off C.

All sizes ... 39 (45, 43, 45, 45, 47) sts.

Using M only for rem, cont in patt inc one st at each end of 3rd (11th, next, 3rd, 3rd, 7th) row, then in every foll, 6th (12th, 12th, 10th, 12th, 10th) row until there are 47 (49, 51, 55, 55, 59) sts.

Cont in patt without shaping until work measures 11 (13, 16, 18, 19, 21) cm (or length desired) from beg, working last row on wrong side.

Shape Top

Keeping patt correct, cast off 2 sts at beg of next 2 rows. 43 (45, 47, 51, 51, 55) sts.

Dec one st at each end of next row, then in every foll 4th row until 35 (35, 37, 39, 39, 43) sts rem, then in every foll alt row until 11 sts rem.

Work 1 row.

Cast off rem sts in patt.

NECKBAND

Join shoulder seams. Using 2.75mm needles and M, cast on 9 sts.

Knit in garter st (1st row is wrong side) until neckband fits (slightly stretched) evenly along fronts and across back neck, working last row on wrong side.

Cast off loosely knitways.

MAKING UP

Do not press. Join side and sleeve seams, matching stripes. Sew in sleeves. Using

SKILL LEVEL**WHAT YOU'LL NEED****Yarn**

3, 3, 3, 4, 4, 5 balls Patons Dreamtime 4 ply 50gm
Main colour #3882
1, 1, 1, 1, 2, 2 balls Patons Dreamtime 4 ply 50gm
Contrast colour #51

Needles

3.25mm knitting needles
2.75mm knitting needles
Wool sewing needle

Tension

26 sts by 52 rows to 10cm over patt, using 3.25mm needles



a flat seam, sew neckband in position as pictured, crossing right end over left end for Girl and left end over right end for Boy, sewing through both thicknesses.

Wool available.

Patons

Ph: 1800 337 032

www.patonsyarn.com.au

MEASUREMENTS

SIZE	0	3	6	9	12	18
TO FIT CHEST CM	35	40	45	47	50	53
FINISHED FIT CM	41	46	52	55	58	61
GARMENT LENGTH CM	22	26	29	31	33	35
SLEEVE LENGTH CM	11	13	16	18	19	21



TIGHT BODICE CARDIGAN

Design by Twilleys of Stamford Design

STITCH GUIDE

Instructions in square brackets [] should be repeated the number of times given after the brackets.

BACK

Using 3.25mm needles, cast on 106 (110, 118, 122, 130, 134) sts.

Row 1: RS – K2, *P2, K2, rep from * to end.

Row 2: P2, *K2, P2, rep from * to end.

These 2 rows form rib.

Work in rib for a further 6 rows, dec (inc, dec, inc, dec, inc) 1 st at end of last row and end with a WS row. 105 (111, 117, 123, 129, 135) sts.

Change to 4mm needles.

Starting with a P row, work in rev st st for 10 rows, end with a WS row.

Dec 1 st at each end of next and every foll 6th row until 89 (95, 101, 107, 113, 119) sts rem. Cont straight until Back measures 25 (26, 26, 27, 27, 28) cm, end with a WS row.

Work in yoke patt as follows:

Row 1: RS – P1 (0, 1, 0, 1, 0), [K1, P1] 3 (5, 6, 8, 9, 11) times, K1, yfwd, sl 1, K1, psso, *[P1,

K1] 5 times, yfwd, sl 1, K1, psso, rep from * to last 7 (10, 13, 16, 19, 22) sts, [P1, K1] 3 (5, 6, 8, 9, 11) times, P1 (0, 1, 0, 1, 0).

Row 2: K1 (0, 1, 0, 1, 0), [P1, K1] 3 (5, 6, 8, 9, 11) times, P3, *K1, [P1, K1] 4 times, P3, rep from * to last 7 (10, 13, 16, 19, 22) sts, [K1, P1] 3 (5, 6, 8, 9, 11) times, K1 (0, 1, 0, 1, 0).

Row 3: P1 (0, 1, 0, 1, 0), [K1, P1] 3 (5, 6, 8, 9, 11) times, K2tog, yfwd, K1, *P1, [K1, P1] 4 times, K2tog, yfwd, K1, rep from * to last 7 (10, 13, 16, 19, 22) sts, [P1, K1] 3 (5, 6, 8, 9, 11) times, P1 (0, 1, 0, 1, 0).

Row 4: as row 2. These 4 rows form yoke patt. Cont in patt as set, inc 1 st at each end of next and every foll 4th row until there are 105 (111, 117, 123, 129, 135) sts, taking inc sts into 1x1 rib. Cont straight until Back measures 40 (41, 41, 42, 42, 43) cm, end with a WS row.

Shape Armholes

Keeping patt correct, cast off 4 (5, 5, 6, 6, 7) sts at beg of next 2 rows. 97 (101, 107, 111, 117, 121) sts.

Dec 1 st at each end of next 5

(5, 7, 7, 9, 9) rows, then on foll 3 (4, 4, 5, 5, 6) alt rows. 81 (83, 85, 87, 89, 91) sts.

Cont straight until armhole measures 20 (20, 21, 21, 22, 22) cm, end with a WS row.

Shape Shoulders

Cast off 7 (7, 7, 7, 8) sts at beg of next 4 rows, then 6 (6, 7, 7, 8, 7) sts at beg of foll 2 rows.

Cast off rem 41 (43, 43, 45, 45, 45) sts.

LEFT FRONT

Using 3.25mm needles, cast on 51 (55, 59, 63, 63, 67) sts.

Row 1: RS – K2, *P2, K2, rep from * to last st, K1.

Row 2: K1, P2, *K2, P2, rep from * to end.

These 2 rows form rib.

Work in rib for a further 6 rows, dec 0 (1, 2, 3, 0, 1) sts evenly across last row and end with a WS row. 51 (54, 57, 60, 63, 66) sts.

Change to 4mm needles.

Starting with a P row, work in rev st st for 10 rows, end with a WS row.

Dec 1 st at beg of next and every foll 6th row until 43 (46, 49, 52, 55, 58) sts rem.

Cont straight until Left Front measures 25 (26, 26, 27, 27, 28) cm, end with a WS row.

Work in yoke patt as follows:

Row 1: RS – P1 (0, 1, 0, 1, 0), [K1, P1] 3 (5, 6, 8, 9, 11) times, K1, yfwd, sl 1, K1, psso, *[P1, K1] 5 times, yfwd, sl 1, K1,

SKILL LEVEL



intermediate

WHAT YOU'LL NEED

Yarn

9 (9, 10, 11, 11, 12) 50g balls
Twilleys Gorgeous DK
3 buttons

Needles

3.25mm knitting needles
4.00mm knitting needles

Tension

24 stitches by 30 rows to
10cm over reverse stocking
stitch using 4mm needles.

HAND KNIT YARNS by
Naturally
IT'S PURE
NEW ZEALAND

MEASUREMENTS

TO FIT BUST CM	81	86	91	97	102	107
FINISHED FIT CM	88	93	98	103	108	113
GARMENT LENGTH CM	60	61	62	63	64	65
SLEEVE LENGTH CM	47	47	48	48	48	49



psso, rep from * to last 9 sts, [P1, K1] 4 times, P1.

Row 2: * K1, [P1, K1] 4 times, P3, rep from * to last 7 (10, 13, 16, 19, 22) sts, [K1, P1] 3 (5, 6, 8, 9, 11) times, K1 (0, 1, 0, 1, 0).
Row 3: P1 (0, 1, 0, 1, 0), [K1, P1] 3 (5, 6, 8, 9, 11) times, K2tog, yfwd, K1, *P1, [K1, P1] 4 times, K2tog, yfwd, K1, rep from * to last 9 sts, [P1, K1] 4 times, P1.

Row 4: as row 2.

These 4 rows form yoke patt. Cont in patt as set, inc 1 st at beg of next and every foll 4th row until there are 51 (54, 57, 60, 63, 66) sts, taking inc sts into 1x1 rib.

Cont straight until Left Front

matches Back to start of armhole shaping, end with a WS row.

Shape Armhole

Keeping patt correct, cast off 4 (5, 5, 6, 6, 7) sts at beg of next row. 47 (49, 52, 54, 57, 59) sts.

Work 1 row.

Dec 1 st at armhole edge of next 5 (5, 7, 7, 9, 9) rows, then on foll 3 (4, 4, 5, 5, 6) alt rows. 39 (40, 41, 42, 43, 44) sts. Work 4 (2, 4, 2, 2, 0) rows, end with a RS row.

Shape Neck

Keeping patt correct, cast off 6 (7, 7, 8, 8, 8) sts at beg of

next row. 33 (33, 34, 34, 35, 36) sts.

Dec 1 st at neck edge of next 7 rows, then on foll 4 alt rows, then on 2 foll 4th rows. 20 (20, 21, 21, 22, 23) sts.

Cont straight until Left Front matches Back to start of shoulder shaping, end with a WS row.

Shape Shoulder

Cast off 7 (7, 7, 7, 7, 8) sts at beg of next and foll alt row.

Work 1 row.

Cast off rem 6 (6, 7, 7, 8, 7) sts.

RIGHT FRONT

Using 3.25mm needles, cast on 51 (55, 59, 63, 63, 67) sts.

Row 1: RS – K3, *P2, K2, rep from * to end.

Row 2: P2, * K2, P2, rep from * to last st, K1.

These 2 rows form rib.

Work in rib for a further 6 rows, dec 0 (1, 2, 3, 0, 1) sts evenly across last row and end with a WS row. 51 (54, 57, 60, 63, 66) sts.

Change to 4mm needles.

Starting with a P row, work in rev st st for 10 rows, end with a WS row.

Dec 1 st at end of next and every foll 6th row until 43 (46, 49, 52, 55, 58) sts rem.

Cont straight until Right Front measures 25 (26, 26, 27, 27, 28) cm, end with a WS row.

Work in yoke patt as follows:

Row 1: RS – * [P1, K1] 5 times, yfwd, sl 1, K1, psso, rep from * to last 7 (10, 13, 16, 19, 22) sts, [P1, K1] 3 (5, 6, 8, 9, 11) times, P1 (0, 1, 0, 1, 0).

Row 2: K1 (0, 1, 0, 1, 0), [P1, K1] 3 (5, 6, 8, 9, 11) times, P3, *K1, [P1, K1] 4 times, P3, rep from * to last 9 sts, [K1, P1] 4 times, K1.

Row 3: * P1, [K1, P1] 4 times, K2tog, yfwd, K1, rep from * to last 7 (10, 13, 16, 19, 22) sts, [P1, K1] 3 (5, 6, 8, 9, 11) times, P1 (0, 1, 0, 1, 0).

Row 4: as row 2.

These 4 rows form yoke patt. Cont in patt as set, inc 1 st at end of next and every foll 4th row until there are 51 (54, 57, 60, 63, 66) sts, taking inc sts into 1x1 rib.

Cont straight until Right Front matches Back to start of armhole shaping, end with a RS row.

Shape Armhole

Keeping patt correct, cast off 4 (5, 5, 6, 6, 7) sts at beg of next row. 47 (49, 52, 54, 57, 59) sts.

Dec 1 st at armhole edge of next 5 (5, 7, 7, 9, 9) rows, then on foll 3 (4, 4, 5, 5, 6) alt rows. 39 (40, 41, 42, 43, 44) sts. Work 5 (3, 5, 3, 3, 1) rows, end with a WS row.

Shape Neck

Keeping patt correct, cast off 6 (7, 7, 8, 8, 8) sts at beg of next row. 33 (33, 34, 34, 35, 36) sts.

Dec 1 st at neck edge of next 7 rows, then on foll 4 alt rows, then on 2 foll 4th rows. 20 (20, 21, 21, 22, 23) sts.

Cont straight until Right Front matches Back to start of shoulder shaping, end with a RS row.

Shape Shoulder

Cast off 7 (7, 7, 7, 7, 8) sts at beg of next and foll alt row. Work 1 row.

Cast off rem 6 (6, 7, 7, 8, 7) sts.

SLEEVES (BOTH ALIKE)

Using 3.25mm needles, cast on 54 (54, 54, 58, 58, 58) sts. Work in rib as given for Back for 8 rows, dec (dec, inc, dec,

dec, inc) 1 st at end of last row and end with a WS row. 53 (53, 55, 57, 57, 59) sts. Change to 4mm needles.

Next row: RS – K1, * P1, K1, rep from * to end.

Next row: P1, * K1, P1, rep from * to end.

These 2 rows form patt for rest of Sleeve.

Cont in patt, shaping sides by inc 1 st at each end of 7th and every foll 8th row to 65 (75, 73, 75, 85, 85) sts, then on every foll 10th row until there are 79 (81, 83, 85, 87, 89) sts, taking inc sts into patt.

Cont straight until Sleeve measures 47 (47, 48, 48, 48, 49) cm, end with a WS row.

Shape Top

Keeping patt correct, cast off 4 (5, 5, 6, 6, 7) sts at beg of

next 2 rows. 71 (71, 73, 73, 75, 75) sts.

Dec 1 st at each end of next 3 rows, then on every foll alt row until 35 sts rem, then on foll 9 rows, end with a WS row. Cast off rem 17 sts.

NECKBAND

Join both shoulder seams.

With RS facing and using 3.25mm needles, starting and ending at front opening edges, pick up and knit 48 (49, 49, 50, 50, 50) sts up right side of neck, 40 (42, 42, 44, 44, 44) sts from back, then 48 (49, 49, 50, 50, 50) sts down left side of neck. 136 (140, 140, 144, 144, 144) sts.

****Row 1:** WS – Knit.

Row 2: K3, * P2, K2, rep from * to last st, K1.

Row 3: K1, P2, * K2, P2, rep from * to last st, K1.

Last 2 rows form rib.

Work in rib for a further 4 rows, ending with a WS row. Cast off in rib.

BUTTON BAND

With RS facing and using 3.25mm needles, starting at top of Neckband, pick up and knit 55 (56, 59, 59, 61, 61) sts down left front opening edge to start of yoke patt, then 61 (64, 65, 65, 67, 67) sts down front opening edge to cast-on edge. 116 (120, 124, 124, 128, 128) sts.

Complete as given for Neckband from **.

BUTTONHOLE BAND

With RS facing and using 3.25mm needles, starting at cast-on edge, pick up and knit 61 (64, 65, 65, 67, 67) sts up right front opening edge

to start of yoke patt, then 55 (56, 59, 59, 61, 61) sts up front opening edge to top of Neckband. 116 (120, 124, 124, 128, 128) sts.

Complete as given for Neckband from **, with the addition of 3 buttonholes in row 4 worked as follows:

Row 4: RS – rib 62 (66, 66, 68, 68), yrn, work 2 tog, [rib 23 (23, 25, 25, 26, 26), yrn, work 2 tog] twice, rib 2.

MAKING UP

Join side seams. Join sleeve seams. Insert sleeves. Sew on buttons.

Wool available.

Wentworth Distributors NZ Ltd

Free phone AU: 1800 150 542

Free phone NZ: 0800 738 998

www.NaturallyYarnsNZ.com

creativecraftclass.com

Handmade felt – Hand knit designs
Created by you



info@creativecraftclass.com

Two fantastic Queensland Locations
Brisbane & Noosa
Quality Informative Tuition
Ph 5470 2500

Wool addiction

Anty Brett Noro Fibre Art Creas
Jo Sharp Killa Mission Falls
Debbie Bliss Louise Harding
Arian Trends WOOLgenic Opal
Sublime Naturally Grignasco
and many more fine yarns

Lantern Moss Patterns/Books
Clover Knitting Accessories
Classes Workshops Art Viva
Knit Pro Soak Ashford

"The Parlour"
Shop 6/20 Station Street BOWRAL NSW 2576
PHONE: 02 4942 4799
Web: www.wooladdiction.com.au
Closed Mondays
Open Tues-Fri 10am – 5pm
Sat-Sun 10am – 4pm (winter)

TIE FRONT CARDIGAN AND BOOTEES

Shaping is worked into this intermediate skill cardigan for babies, with options on a plain or picot cast off edging.



STITCH GUIDE

Instructions given for 41cm chest; larger sizes given in round brackets. Where only one figure is given, this applies to all sizes.

CARDIGAN

BACK

Using 3.25mm needles cast on 62 (70, 78, 86, 94) sts. Starting with a knit row, continue in stocking stitch

throughout as follows:

Work 26 (28, 28, 34, 36) rows, finishing on a wrong side row.

Shape armholes:

Cast off 3 sts at beg of next 2

rows. 56 (64, 72, 80, 88) sts.

Dec 1 st at each end of next 3 (3, 5, 5, 7) rows, then on following 2 (3, 2, 3, 2) alt rows. 46 (52, 58, 64, 70) sts. Continue straight until

armhole measures 7 (8, 8, 9, 10) cm finishing on a wrong side row.

Shape shoulders:

Cast off 3 (4, 4, 5, 6) sts at beg of next 2 rows. 40 (44, 50, 54, 58) sts.

Next row: RS – cast off 3 (4, 4, 5, 6) sts, K until there are 6 (6, 8, 8, 8) sts on right needle and turn, leaving remaining sts on a st holder.

Cast off remaining 3 (3, 5, 5, 5) sts.

Return to sts left on st holder, rejoin yarn with right side facing, cast off centre 22 (24, 26, 28, 30) sts, K to end.

Cast off remaining 3 (4, 4, 5, 6) sts at beg of next row, then 3 sts at beg of following row. Cast off remaining 3 (3, 5, 5, 5) sts.

LEFT FRONT

Using 3.25mm needles cast on 69 (78, 88, 98, 107) sts.

Commencing with a K row, continue in stocking st throughout as follows:

Work 1 row.

Inc 1 st at beg of next row and at the same edge on following 5 rows. 75 (84, 94, 104, 113) sts.

Work 1 row, finishing on a wrong side row.

Place marker at beg of last row.

Dec 1 st at shaped edge of next 5 rows, finishing on a right side row. 70 (79, 89, 99, 108) sts.

Cast off 6 (7, 8, 9, 10) sts at beg of next and 4 following alt rows. 40 (44, 49, 54, 58) sts.

Work 1 row, finishing on a right side row.

Dec 1 st at shaped edge of next 3 (5, 5, 8, 4) rows. 37 (39, 44, 45, 50) sts.

Work 0 (0, 0, 1, 1) row, finishing on a wrong side row.

Shape armhole:

Cast off 3 sts at beg and dec 1 st at end of next row. 33 (35, 40, 41, 46) sts.

Dec 1 (1, 1, 0, 0) sts at front opening (shaped tie end) edge of next row. 32 (34, 39, 41, 46) sts.

Dec 1 st at armhole edge of next 3 (3, 5, 5, 7) rows, then on following 2 (3, 2, 3, 2) alt rows and at same time dec 1 st at front opening edge of next 7 (5, 5, 1, 1) rows, then on following 0 (2, 2, 5, 5) alt rows. 20 (21, 25, 27, 31) sts.

Dec 1 st at front opening edge only on next (2nd, 2nd, 2nd, 2nd) and following 3 (0, 0, 0, 0) rows, then on following 7 (9, 11, 11, 13) alt rows. 9 (11, 13, 15, 17) sts.

Continue straight until left front matches back to start of shoulder shaping, finishing on a wrong side row.

Shape shoulder:

Cast off 3 (4, 4, 5, 6) sts at beg of next and following alt row.

Work 1 row.

Cast off remaining 3 (3, 5, 5, 5) sts.

RIGHT FRONT

Using 3.25mm needles cast on 69 (78, 88, 98, 107) sts.

Commencing with a K row, continue in stocking st throughout as follows:

Work 1 row.

Inc 1 st at end of next row and at same edge on following 5 rows. 75 (84, 94, 104, 113) sts.

Work 1 row, finishing on a wrong side row.

Place marker at beg of last row.

Dec 1 st at shaped edge of next 5 rows, finishing on a

right side row. 70 (79, 89, 99, 106) sts.

Work 1 row.

Cast off 6 (7, 8, 9, 10) sts at beg of next and 4 following alt rows, finishing on a right side row. 40 (44, 49, 54, 58) sts.

Dec 1 st at shaped edge of next 4 (6, 6, 8, 4) rows, then on following 0 (0, 0, 2, 5) alt rows, finishing on a right side row. 36 (38, 43, 44, 49) sts.

Shape armhole:

Cast off 3 sts at beg and dec 1 (1, 1, 0, 0) st at end of next row. 32 (34, 39, 41, 46) sts.

Dec 1 st at armhole edge of next 3 (3, 5, 5, 7) rows, then on following 2 (3, 2, 3, 2) alt rows and at same time dec 1 st at front opening edge of next 7 (5, 5, 1, 1) rows, then on following 0 (2, 2, 5, 5) alt rows. 20 (21, 25, 27, 31) sts.

Dec 1 st at front opening edge only on next (2nd, 2nd, 2nd, 2nd) and following 3 (0, 0, 0, 0) rows, then on following 7 (9, 11, 11, 13) alt rows. 9 (11, 13, 15, 17) sts.

Continue straight until Right Front matches Back to start of shoulder shaping, finishing on a right side row.

Shape shoulder:

Cast off 3 (4, 4, 5, 6) sts at beg of next and following alt row.

Work 1 row.

Cast off remaining 3 (3, 5, 5, 5) sts.

SKILL LEVEL



WHAT YOU'LL NEED

Yarn

2 balls 4 ply 100gm Wendy Happy for set.

2 buttons

Needles

2.75mm knitting needles

3.25mm knitting needles

2.75 circular needle

Stitch holder

Tension

28 stitches by 36 rows to 10cm over stocking st using 3.25mm knitting needles.

SLEEVES

Long:

Using 3.25mm needles cast on 34 (36, 38, 40, 42) sts.

Commencing with a K row continue in stocking st throughout as follows:

Inc 1 st at end each of 3rd (3rd, 5th, 5th, 5th) and every following alt (alt, 4th, 4th, 4th) row to 46 (40, 62, 56, 52) sts, then on every following 4 (4th, 6th, 6th, 6th) row until there are 56 (60, 64, 68, 72) sts.

Continue without further shaping until sleeve measures 12 (15, 19, 23, 27) cm finishing on a wrong side row.

MEASUREMENTS

SIZE	3	6	12	18	24 MTHS
TO FIT CHEST CM	41	46	51	56	61
FINISHED FIT CM	44	50	56	61	67
GARMENT LENGTH CM	17	19	20	22	24
SLEEVE LENGTH CM	12	15	19	23	27
SHORT CM	2	3	3	4	4
BOOTEES LENGTH CM	8	10			

TIE FRONT CARDIGAN AND BOOTEES



Shape top:

Cast off 3 sts at beg of next 2 rows. 50 (54, 58, 62, 66).

Dec 1 st at each end of next 5 rows, then on following 3 alt rows, then on every row until 20 sts remain, finishing on a wrong side row.

Cast off 4 sts at beg of next 2 rows.

Cast off remaining 12 sts.

Short:

Using 3.25mm needles cast on 52 (54, 56, 58, 60) sts. Commencing with a K row, continue in stocking st throughout as follows: Inc 1 st at each end of 3rd and every following alt row until there are 56 (60, 64, 68, 72) sts. Work 3 rows, finishing on a wrong side row.

Shaping top:

Cast off 3 sts at beg of next 2 rows. 50 (54, 58, 62, 66) sts. Dec 1 st at each end of next 5 rows, then on following 3 alt rows, then on every row until 20 sts remain, finishing on a wrong side row.

Cast off 4 sts at beg of next 2 rows.

Cast of remaining 12 sts.

MAKING UP

Gently press to shape. Join shoulder seams to top sewing. Join side seams by top sewing.

Long Sleeve Cuff Border:

With right side facing and using 2.75mm needles, pick up and K34 (34, 37, 40, 40) sts evenly along cast on edge of sleeve. Complete with either plain or picot edge.

Short Sleeve Cuff Border:

With right side facing and using 2.75mm needles, pick up K 52 (52, 55, 58, 58) sts evenly along cast on edge of sleeve. Complete with either plain or picot edge.

Plain edge trim:

Cast off knitwise (on wrong side).

Picot edge trim:

Cast off as follows: Cast off 2 st (one st on right needle) * slip st on right needle back onto left needle, cast on 2 sts, cast off 5 sts (one st on right

needle), rep from * to end, noting that at end of row there will only be 4 sts to cast off.

Join sleeves and cuff borders by top sewing. Inset sleeves into armholes.

Lower Edge Border:

With right side facing and using 2.75mm circular needle, starting and ending at markers at ends of tie extensions, pick up and K 74 (83, 93, 103, 112) sts evenly from marker at end of left front tie, down shape row end edge and then along cast on edge to side seam, 60 (69, 76, 83, 92) sts from cast on edge of Back, and then 74 (83, 93, 103, 112) sts evenly along cast on edge and up shaped row end edge to other marker at end Right Front tie. 208 (235, 262, 289, 316) sts. Complete with either plain or picot edge as in sleeve.

BOOTEES

3.25mm needles cast on 39 (45) sts.

Row 1: RS – K1, * P1, K1, rep from * to end.

Row 2: P1, * K1, P1, rep from * to end.

Repeat last 2 rows until rib measures 5 (7) cm ending with a right side row.

Shape instep:

Row 1: Rib 24 (28) turn.

Row 2: Rib 9 (11) turn. Break yarn off.

With right side facing and continuing on from the 15 (17) sts on right needle pick up and K 6 (8) sts evenly along side of instep, pick up and K 6 (8) sts evenly along other side of instep then knit remaining 15 (17) sts. 51 (61) sts.

Next row: K 20 (24), inc in each of next 2 sts, K 7 (9),

inc in each of next 2 sts, K 20 (24). 55 (65) sts.

Work 8 rows in garter st ending with a wrong side row. Work 6 rows in stocking st, starting with a Knit.

Next row: (tuck row) * K first st on needle together with corresponding st on first row. Repeat from * to end taking care to match sts.

Shape Sole:

Row 1: K 4 (5), * k2tog, k3(4), rep from * to last 6 sts, k2tog, knit to end. 45 (55) sts.

Row 2: k2tog, k18 (23), k2tog, k1, k2tog, k18 (23), k2tog. 41 (51) sts.

Row 3: knit 1 row.

Row 4: k2tog, k16 (21), k2tog, k1, k2tog, k16 (21), k2tog. 37 (47) sts remain.

Row 5: knit 1 row.

Row 6: k2tog, k14 (19), k2tog, k1, k2tog, k14 (19), k2tog. Cast off knitwise.

MAKING UP

Sew the back seam by top sewing, use small over st for the sole.

Strap:

Using 3.25mm needles cast on 44 (50) sts.

Work 2 rows of knit.

Next row: (button hole) – k2, yfwd, k2tog, K to end.

Knit 1 row.

Cast off.

Make second strap in the same way but work the button hole at the end of the row by knitting to last 4 sts, yfwd, k2tog, k2.

Fold strap in half. Sew centre to back seam. Add button.

Wool available.

Stitch N Time

2/55 Colbee Court, Phillip ACT

Ph: 02 6282 8383



Panda Cotton Blend 8 Ply

Summer is just around the corner and now is the time to knit something cool and comfy from Panda's Cotton Blend 8 Ply.

It now comes in 20 great colours – 6 new for this summer.

Panda Book 227 features 10 fabulous designs for girls and women, so you're sure to find something special to create with Panda Cotton Blend 8 Ply.

Available at all good knitting stores. Phone 1800 337 032 for your nearest stockist.

www.auspinners.com.au



Panda Cotton Blend 8 Ply Book 227

OVER SIZE VEST

Design by Patons



SKILL LEVEL



WHAT YOU'LL NEED

Yarn

10, 11, 11, 12, 13 x Patons
Jet 50gm balls

Needles

5.00mm knitting needles
5.50mm knitting needles
5.00mm circular knitting
needle
Stitch holder
Wool sewing needle

Tension

19 sts by 23 rows to 10 cm
over double moss stitch,
using 5.50mm needles

 **Patons**

BACK

Using 5.50mm needles, cast on 87 (97, 107, 117, 125) sts.

Beg Band patt

Row 1: K2, * P1, K1, rep from * to last st, K1.

Row 2: * K1, P1, rep from * to last st, K1.

Last 2 rows form rib.

Rep last 2 rows 8 times (18 rows rib in all).

Beg main patt

Row 1: K1, * P1, K1, rep from * to end.

Row 2: P1, * K1, P1, rep from * to end.

Row 3: As 2nd row.

Row 4: As 1st row.

Row 1 to 4 incl form double moss st patt.

Cont in patt until work measures 18cm from beg, working last row on wrong side.

Tie a coloured thread at each end of last row to mark end of side seams.

Shape curved armholes

Keeping patt correct, dec one st at each end of next row, then in every foll 4th row until 81 (89, 97, 107, 111) sts rem, then in every foll alt row until 57 (67, 77, 85, 95) sts rem. ** Work 3 rows patt.

Keeping patt correct, inc one st at each end of next row, then in every foll alt row until there are 75 (85, 95, 105, 111) sts, then in every foll 4th row until there are 87 (97, 107, 117, 125) sts.

Work 1 row patt.

Shape shoulders

Keeping patt correct, cast off 2 (2, 2, 2, 3) sts at beg of next 24 (20, 12, 4, 22) rows, Sizes S, M, L and XL only – then (3, 3, 3, 4) sts at beg of next (6, 14, 22, 4) rows.

All Sizes: Leave rem 39 (39, 41, 43, 43) sts on a stitch holder.

FRONT

Work as given for Back to **.

Work 1 row patt.

Divide for v neck

Next Row: Patt 28 (33, 38, 42, 47), turn.

Cont on these 28 (33, 38, 42, 47) sts for right side of front neck.

Work 1 row patt.

Keeping patt correct, inc one st at armhole edge in next row, then in every foll alt row 8 (8, 8, 9, 7) times, then in every foll 4th row 6 (6, 6, 6, 7) times, AT SAME TIME dec one st at neck edge in next row, then in every foll alt row 5 (4, 6, 7, 7) times, then in every foll 4th row 7 (8, 7, 7, 7) times. 30 (35, 39, 43, 47) sts.

Work 1 row patt.

Shape shoulder

Keeping patt correct, cast off 2 (2, 2, 2, 3) sts at beg of next row, then in every foll alt row 11 (9, 5, 1, 10) times, Sizes S, M, L and XL only – then (3, 3, 3, 4) sts at beg of every foll alt row (3, 7, 11, 2) times, All Sizes – AT SAME TIME dec one st at neck edge in next (3rd, 3rd, 3rd, 3rd) row, then in every foll 4th row 5 times.

Fasten off.

With right side facing, slip next st (centre st) onto safety pin and leave for neckband.

Join yarn to rem 28 (33, 38, 42, 47) sts and patt to end.

Cont on these 28 (33, 38, 42, 47) sts for left side of front neck.

Work 1 row patt.

Keeping patt correct, inc one st at armhole edge in next row, then in every foll alt row 8 (8,

8, 9, 7) times, then in every foll 4th row 6 (6, 6, 6, 7) times, AT SAME TIME dec one st at neck edge in next row, then in every foll alt row 5 (4, 6, 7, 7) times, then in every foll 4th row 7 (8, 7, 7, 7) times ... 30 (35, 39, 43, 47) sts.

Work 2 rows patt, dec one st at neck edge as before in 2nd row 1 (0, 0, 0, 0) times.

Keeping patt correct, cast off 2 (2, 2, 2, 3) sts at beg of next row, then in every foll alt row 11 (9, 5, 1, 10) times, Sizes S, M, L and XL only – then (3, 3, 3, 4) sts at beg of every foll alt row (3, 7, 11, 2) times, All Sizes – AT SAME TIME dec one st at neck edge in 4th (2nd, 2nd, 2nd, 2nd) row, then in every foll 4th row 4 (5, 5, 5, 5) times. Fasten off.

NECKBAND

Join shoulder seams. With right side facing, using 5.00mm circular needle, beg at left shoulder seam, knit up 66 (66, 68, 68, 70) sts evenly along left front neck shaping to centre st, knit centre st placing a marker on centre st, knit up 66 (66, 68, 68, 70) sts along right front neck shaping to shoulder seam, then knit across sts from back neck stitch holder. 172 (172, 178, 180, 184) sts.

Round 1: * K1, P1, rep from * to end.

Round 2: Rib to within 2 sts of centre st, ybk, sl 1, K1, pssso, K1 (centre st), K2tog, rib to end. 170 (170, 176, 178, 182) sts.

Round 3: Keeping rib correct, rib to end.

Round 4: Rib to within 2 sts of centre st, P2tog tbl, K1 (centre st), P2tog, rib to end. 168 (168, 174, 176, 180) sts.

Rep last 4 rounds twice. 160 (160, 166, 168, 172) sts, 12 rounds rib in all.

Cast off in rib.

ARMHOLE BANDS AND MAKING UP

Do not press. Join side seams to coloured threads. With right side facing, beg at side seam, using 5.00mm circular needle, knit up 138 (140, 142, 146, 150) sts evenly along armhole edge (mark first st knitted up as centre st).

Round 1: * K1, P1, rep from * to end.

Round 2: K1 (centre st), K2tog, rib to last 2 sts, ybk, sl 1, K1, pssso. 136 (138, 140, 144, 148) sts.

Round 3: Keeping rib correct, rib to end.

Round 4: K1 (centre st), P2tog, rib to last 2 sts, P2tog tbl. 134 (136, 138, 142, 146) sts.

Rep last 4 rounds twice. 126 (128, 130, 134, 138) sts, 12 rounds rib in all.

Cast off Round: Sl 1, K1, pssso, * sl 1, K1, pass 2 sts over, rep from * to end.

Fasten off.

Wool available.

Patons

Ph: 1800 337 032

www.patonsyarn.com.au

MEASUREMENTS

SIZE	XS	S	M	L	XL
TO FIT BUST CM	70	80	90	100	110
FINISHED FIT CM	90	100	110	120	130
GARMENT LENGTH CM	62	63	64	65	66

BOY'S CONTRAST SLEEVE JUMPER

Design by Australian Panda Yarns

BACK

Using 3.25mm needles and C1, cast on 71 (77, 83, 91, 95) sts.

Row 1: K2, * P1, K1, rep from * to last st, K1.

Row 2: K1, * P1, K1, rep from * to end.

Last 2 rows form rib.

Rep last 2 rows 3 times (8 rows rib in all).

Change to 4.00mm needles.

Beg Stripe Patt

Using C2, work 10 rows stocking st, beg with a knit row.

Using C3, work 10 rows stocking st.

Last 20 rows form stripe patt for Back.

Cont in stripe patt until Back measures 24 (27, 30, 32, 35) cm from beg, ending with a purl row.

Shape Raglan Armholes

Keeping stripe patt correct, cast off 2 sts at beg of next 2 rows. 67 (73, 79, 87, 91) sts. Dec one st at each end of next row. 65 (71, 77, 85, 89) sts.

Work 3 rows.



Rep last 4 rows 2 (2, 0, 0, 0) times. 61 (67, 77, 85, 89) sts. **
Dec one st at each end of next row, then in every foll alt row until there are 33 (35, 35, 37, 37) sts.
Purl 1 row.
Leave rem 33 (35, 35, 37, 37) sts on a stitch, holder.

FRONT

Work as given for Back to **. Dec one st at each end of next row, then in every foll alt row until there are 55 (57, 59, 61, 61) sts.
Purl 1 row.

Shape Neck

Next Row: K2tog, K20 (20, 21, 21, 21), turn.

Cont on these 21 (21, 22, 22, 22) sts for left side of neck.

Next Row: P2tog, purl to end.

Next Row: K2tog, knit to last 2 sts, K2tog.

Rep last 2 rows once. 15 (15, 16, 16, 16) sts.

Keeping stripe patt correct, dec one st at armhole edge in every foll alt row 8 (8, 9, 9, 9) times, AT SAME TIME dec one st at neck edge in every foll alt row 3 times, then in every foll 4th row twice. 2 sts.

Next Row: Purl.

Next Row: K2tog. Fasten off. Slip next 11 (13, 13, 15, 15) sts onto a stitch, holder and leave for neckband.

With right side facing, join appropriate colour yarn to keep stripes correct, knit to

last 2 sts, K2tog.

Cont on these 21 (21, 22, 22, 22) sts for right side of neck.

Next Row: Purl to last 2 sts, P2tog.

Next Row: K2tog, knit to last 2 sts, K2tog.

Rep last 2 rows once. 15 (15, 16, 16, 16) sts.

Dec one st at armhole edge in every foll alt row 8 (8, 9, 9, 9) times, AT SAME TIME dec one st at neck edge in every foll alt row 3 times, then in every foll 4th row twice. 2 sts.

Next Row: Purl.

Next Row: K2tog. Fasten off.

SLEEVES

Using 3.25mm needles, and C1, cast on 41 (43, 43, 45, 45) sts.

Work 8 rows rib as for Back.

Change to 4.00mm needles.

Beg Stripe Patt:

Work 12 rows stocking st in stripes of 6 rows C4, 6 rows C5, AT SAME TIME inc one st at each end of 7th row. 43 (45, 45, 47, 47) sts.

Last 12 rows form stripe patt for Sleeves.

Keeping stripe patt correct, inc one st at each end of 3rd (3rd, 5th, 7th, 3rd) row, then in every foll 8th (8th, 10th, 12th, 8th) row until there are 47 (49, 55, 57, 59) sts, then in every foll 10th (10th, 12th, 14th, 10th) row until there are 53 (57, 59, 61, 67) sts.

Cont in stripe patt until work measures 23 (28, 33, 38, 41) cm from beg, ending with a purl row.

Shape Raglan

Keeping stripe patt correct, cast off 2 sts at beg of next 2 rows. 49 (53, 55, 57, 63) sts. Dec one st at each end of next row.

Work 1 (1, 1, 3, 3) rows stripe patt.

Rep last 4 rows 0 (0, 0, 1, 0) times. 47 (51, 53, 53, 61) sts.

Dec one st at each end of next row, then in every foll alt row until 9 sts rem.

Purl 1 row.

Leave rem 9 sts on a stitch, holder.

NECKBAND

Join raglan seams, noting that tops of sleeves form part of neckline. With right side facing, using 3.25mm double, pointed needles and C1, beg at left back raglan seam, work across sts from left sleeve stitch, holder as folls – K2tog, K5, sl1, K1, psso, knit up 19 (19, 21, 21, 21) sts evenly along left side of front neck shaping, knit across sts from front neck stitch, holder, knit up 19 (19, 21, 21, 21) sts evenly along right side of front neck shaping, work across right sleeve stitch, holder as folls: K2tog, K5, sl1, K1, psso, then work across back stitch, holder as folls: K2tog, K29 (31, 31, 33, 33), sl1, K1, psso. 94 (98, 102, 106, 106) sts.

Round 1: * K1, P1, rep from * to end.

Rep last round 5 times (6 rounds rib in all).

Cast off loosely in rib.

SKILL LEVEL



WHAT YOU'LL NEED

Yarn

Panda Magnum Soft 8 ply 100gm

1 x Colour 1 #7936

2 x Colour 2 #1861

1, 1, 2, 2, 2 x Colour 3 #4603

1 x Colour 4 #1000

1 x Colour 5 #4606

Needles

3.25mm knitting needles

4.00mm knitting needles

3.25mm set of double,

pointed knitting needles

4 stitch holders

Wool sewing needle

Tension

22 sts and 30 rows to 10cm over stocking st, using 4.00mm needles.



MAKING UP

Do not press. Join side and sleeve seams, matching stripes.

Wool available.

Australian Country Spinners
www.auspinners.com.au

Panda Yarns

www.pandayarns.biz

Ph: 1800 337 032

MEASUREMENTS					
SIZE	2	4	6	8	10
TO FIT CHEST	55	60	65	70	75 CM
FINISHED FIT	63	68	74	80	85 CM
GARMENT LENGTH	38	42	46	50	54 CM
SLEEVE LENGTH	23	28	33	38	41 CM

BONNIE BONNIE BERET

This pattern was given to me many years ago – handwritten by my mother. With the new 'fairisle' yarns available I wanted to try yet another one and was pleased with the psuedo-tam'o'shanter. And yes, it is a cheat, but a lot of fun.



SKILL LEVEL



beginner

WHAT YOU'LL NEED

Yarn

1 x 50gm ball Sirdar
Crofter DK

Needles

3.25mm knitting needles
4.00mm knitting needles

Tension

As per wool ball

MEASUREMENTS

SIZE LADIES AVERAGE

BERET

Cast on 121 sts.

Row 1: K2 * P1, K1, repeat to last st, K1.

Row 2: K1 * P1, K1, repeat to end of row.

Repeat these two rows a further four times, then the 1st row once.

Next Row: Increase evenly across the row to 169sts. Change to 4.00mm needles.

Row 1: Knit.

Row 2: Purl.

Repeat these two rows 22 times.

Shape Crown

Row 1: K13 * sl, K2tog psso, K25 * repeat until 13st remain K13.

Work 3 rows stocking st.

Row 4: K12 * sl K2tog psso, K23 * repeat until 12st

remain K12.

Continue in this way – dec 1st each end and 2 st between decreases until there are 8st each end and 15st between decreases.

Next rows: Continue decreasing each alternate row until 13sts remain.

Break off yarn and thread through stitches and backstitch seam.

MAKING UP

The original pattern says backstitch the seam – but these days I prefer to mattress stitch so that it looks 'seamless'.

Wool available.

Tasmanian Wool Suppliers P/L
58 Main Road, Moonah Tas
Ph: 03 6278 1800
www.wool suppliers.com.au





The Mountain Spinners

Workshops
Wet felting and needle felting, spinning, learn to weave on a knitters loom.
King Cole Yarn
Exciting range of yarn from the UK.
Spinning
Ashford wheels available, second hand wheels.
Equipment
Full range of Ashford equipment available.

Weaving
Looms, Inkle looms, knitters looms.
Knitting
Tekapo and King Cole available.
Books
Ashford books and patterns.
Great felting Fibres
Corriedale, merino.
Dyeing
All your needs covered with Ashford, Gaywool and Landscape dyes.

Ashford come in and try an Ashford wheel or get parts.

Please visit us at our Exciting new shop at:
148 Boundary Road,
Bardon, Brisbane
Open Tuesday to Friday 10-5
and Saturday 10-4
Telephone (07) 3369 6399
www.mountainspinners.com.au
info@mountainspinners.com.au



The Australian Yarn Company



8 PLY EASY CARE
PREMIUM MACHINABLE WASHABLE WOOL
HEIRLOOM
40 GRAMS NET AT STANDARD COMPRESSION

Heirloom Yarns available from your favourite wool shop

03 9770 8155 for stockists
www.rdmorgan.com.au

BABY BASKET WEAVE SET

Peter Pan Design



SKILL LEVEL



WHAT YOU'LL NEED

Peter Pan 4 ply 50g
Jacket 2 (2, 2, 3) balls
Hat 1 (1, 2, 2) balls
Mittens 1 (1, 1, 1) ball
Trainers 1 (1, 1, 1) ball
6 buttons and 1 stud
fastener for Jacket

Needles

2.75mm knitting needles
3mm knitting needles
3.25mm knitting needles
Stitch holders

Tension

26 sts by 34 rows to 10cm
over patt on 3.25mm
needles

Special abbreviations

tbl – through back of
loops

HAND KNIT YARNS by
Naturally
IT'S PURE
NEW ZEALAND

STITCH GUIDE

Instructions given for 41cm
Chest; larger sizes given in
round brackets. Where only
one figure is given this applies
to all sizes.

JACKET BACK

Using 3mm needles, cast on
55 (59, 65, 71) sts. Work 6
rows in garter st, inc 1 st at
end of last row. 56 (60, 66,
72) sts.

Change to 3.25mm needles.

Commence patt:

Row 1: RS – Knit.

Row 2: P0 (2, 1, 0), * K4, P4,
rep from * to last 0 (2, 1, 0)
sts, P0 (2, 1, 0).

Row 3: K0 (2, 1, 0), * P1, K4,
P3, rep from * to last 0 (2, 1,
0) sts, K0 (2, 1, 0).

Row 4: P0 (2, 1, 0), * K2, P4,
K2, rep from * to last 0 (2, 1,
0) sts, P0 (2, 1, 0).

Row 5: K0 (2, 1, 0), * P3, K4, P1, rep from * to last 0 (2, 1, 0) sts, K0 (2, 1, 0).

Row 6: P0 (2, 1, 0), * P4, K4, rep from * to last 0 (2, 1, 0) sts, P0 (2, 1, 0).

Row 7: Knit.

Row 8 and 10: As 2nd row.

Row 9 and 11: K0 (2, 1, 0), * K4, P4, rep from * to last 0 (2, 1, 0) sts, K0 (2, 1, 0).

Row 12: Purl.

Row 13: K0 (2, 1, 0), * P4, K4, rep from * to last 0 (2, 1, 0) sts, K0 (2, 1, 0).

Row 14: P0 (2, 1, 0), * K1, P4, K3, rep from * to last 0 (2, 1, 0) sts, P0 (2, 1, 0).

Row 15: K0 (2, 1, 0), * P2, K4, P2, rep from * to last 0 (2, 1, 0) sts, K0 (2, 1, 0).

Row 16: P0 (2, 1, 0), * K3, P4, K1, rep from * to last 0 (2, 1, 0) sts, P0 (2, 1, 0).

Row 17: K0 (2, 1, 0), * K4, P4, rep from * to last 0 (2, 1, 0) sts, K0 (2, 1, 0).

Row 18: Purl.

Row 19 and 21: K0 (2, 1, 0), * P4, K4, rep from * to last 0 (2, 1, 0) sts, K0 (2, 1, 0).

Row 20 and 22: As 6th row. These 22 rows form the patt. Continue in patt until work measures 19 (21, 23, 25) cm, from commencement finishing on a wrong side row.

Shape shoulders

Cast off 7 (8, 9, 10) sts at beg of next 2 rows, then 8 (8, 9, 10) sts at beg of following 2 rows.
Sl remaining 26 (28, 30, 32) sts onto a st holder. Break off yarn.

LEFT FRONT

Using 3mm needles, cast on 39 (45, 48, 51) sts. Work 6 rows in garter st.

Change to 3.25mm needles.

Commence patt:

Row 1: Knit.

Row 2: K3, P4 (K3) (K3, P4) (K3), * K4, P4, rep from * to last 0 (2, 1, 0) sts, P0 (2, 1, 0).

Row 3: K0 (2, 1, 0), * P1, K4, P3, rep from * to last 7 (3, 7, 3) sts, P1, K6 (K3) (P1, K6) (K3).

Row 4: K3, P2, K2 (K3) (K3, P2, K2) (K3), * K2, P4, K2, rep from * to last 0 (2, 1, 0) sts, P0 (2, 1, 0).

Row 5: K0 (2, 1, 0), * P3, K4, P1, rep from * to last 7 (3, 7, 3) sts, P3, K4 (K3) (P3, K4) (K3).

Row 6: K7 (3, 7, 3), * P4, K4, rep from * to last 0 (2, 1, 0) sts, P0 (2, 1, 0).

Row 7: Knit.

Row 8 and 10: As 2nd row.

Row 9 and 11: K0 (2, 1, 0), * K4, P4, rep from * to last 7 (3, 7, 3) sts, K7 (3, 7, 3).

Row 12: K3, P to end.

These 12 rows set the patt. Continue in 22 row patt as set and work 3 sts in garter st at front edge.

Boy's design only

Work 0 (6, 8, 14) rows.

Next row: buttonholes – Patt 17 (17, 19, 22), K2tog, yfwd, patt 15 (21, 22, 22), K2tog, yfwd, K3.

Work 21 (21, 23, 23) more rows, then work buttonhole row again.

Work 20 (20, 22, 22) more rows finishing at front edge.

Girls's design only

Work 43 (49, 55, 61) rows finishing at front edge.

** Both designs

Shape neck

Keeping patt correct, cast off 16 (21, 21, 23) sts at beg of next row.

Dec 1 st at neck edge on the next 3 (3, 4, 4) rows, then on every following alt row until 15 (16, 18, 20) sts remain.

Continue without further dec until Front measures same as Back to shoulders finishing at side edge.

Shape shoulder

Cast off 7 (8, 9, 10) sts at beg of next row.

Work 1 row.

Cast off remaining 8 (8, 9, 10) sts. **

RIGHT FRONT

Using 3mm needles cast on 39 (45, 48, 51) sts. Work 6 rows in garter st.

Change to 3.25mm needles.

Commence patt:

Row 1: RS – Knit.

Row 2: P0 (2, 1, 0), * K4, P4, rep from * to last 7 (3, 7, 3) sts, K7 (3, 7, 3).

Row 3: K4, P3 (K3) (K4, P3) (K3), * P1, K4, P3, rep from * to last 0 (2, 1, 0) sts, K0 (2, 1, 0).

Row 4: P0 (2, 1, 0), * K2, P4, K2, rep from * to last 7 (3, 7, 3) sts, K2, P2, K3 (K3) (K2, P2, K3) (K3).

Row 5: K6, P1, (K3) (K6, P1) (K3), * P3, K4, P1, rep from * to last 0 (2, 1, 0) sts, K0 (2, 1, 0).

Row 6: P0 (2, 1, 0), * P4, K4, rep from * to last 7 (3, 7, 3) sts, P4, K3 (K3) (P4, K3) (K3).

Row 7: Knit.

Row 8 and 10: As 2nd row.

Row 9 and 11: K3, P4, (K3) (K3, P4) (K3), * K4, P4, rep from * to last 0 (2, 1, 0) sts, K0 (2, 1, 0).

Row 12: P to last 3 sts, K3.

These 12 rows set the patt. Continue in 22 row patt as set and work 3 sts in garter st at front edge.

Girl's design only

Work 0 (6, 8, 14) rows.

Next row: Buttonholes – K3, yfwd, K2tog, patt 15 (21, 22, 22), yfwd, K2tog, patt to end. Work 21 (21, 23, 23) more rows, then work buttonhole row again.

Work 21 (21, 23, 23) more rows finishing at front edge.

Boy's design only

Work 44 (50, 56, 62) rows finishing at front edge. Work as given from Left Front from ** to **.

MEASUREMENTS

TO FIT CHEST	36,	41,	46,	51
FINISHED FIT	44,	47,	51.5,	56
GARMENT LENGTH	19,	21,	23,	25
SLEEVE LENGTH	13.5,	15,	17,	19
WIDTH AROUND HEAD	47,	47,	49.5,	49.5

SLEEVES (both alike)

Using 3mm needles, cast on 35 (37, 39, 41) sts. Work 8 rows in g st, inc one st at end of last row. 36 (38, 40, 42) sts. Change to 3.25mm needles. Commence patt:

Row 1: RS – Knit.

Row 2: P2 (3, 0, 1), * K4, P4, rep from * to last 2 (3, 0, 1) sts, K2 (3, 0, 1).

Row 3: P2 (3, 0, 1), * P1, K4, P3, rep from * to last 2 (3, 0, 1) sts, P1, K1, (P1, K2) (P0) (P1).

Row 4: K2 (P1, K2) (K0) (K1), * K2, P4, K2, rep from * to last 2 (3, 0, 1) sts, K2 (K2, P1) (K0) (K1). Keeping 22 row patt correct as set and working all inc sts into patt, inc 1 st at each end of the needle on the next and every following 4 (6, 6, 6)th row until 46 (48, 52, 56) sts are on the needle. Continue without further inc until Sleeve measures 13.5 (15, 17, 19) cm from commencement finishing on a wrong side row. Cast off loosely.

MAKING UP

Join shoulder seams by top sewing.

Neckband:

With RS facing, using 3mm needles, pick up and K30 (35, 37, 38) sts up right front neck, K26 (28, 30, 32) sts from back neck st holder, pick up and K30 (35, 37, 38) sts down left front neck. 86 (98, 104, 108) sts. Knit 1 row.

Buttonhole row: Girl's design – K3, yfwd, K2tog, K to end. Buttonhole row: Boy's design – K to last 5 sts, K2tog, yfwd, K3. Knit 2 rows. Cast off knitwise.

Mark depth of armholes 9 (9.5, 10, 11) cm from shoulder seams.

Join side seams to markers and sleeve seams by top sewing, reversing seam for turnback on sleeve cuffs, pin sleeves into position, sew in by top sewing. Sew on buttons. Sew on stud fastener to inside.

HAT

Using 2.75mm needles, cast on 119 (119, 127, 127) sts.

Row 1: K1, * P1, K1, rep from * to end.

Row 2: P1, * K1, P1, rep from * to end.

Rep the last 2 rows for 12cm finishing on a 1st row, inc one st at end of last row. 120 (120, 128, 128) sts.

Change to 3.25mm needles.

Commence patt:

Row 1: RS - Knit.

Row 2: * K4, P4, rep from * to end.

Row 3: * P1, K4, P3, rep from * to end.

Row 4: * K2, P4, K2, rep from * to end.

Row 5: * P3, K4, P1, rep from * to end.

Row 6: * P4, K4, rep from * to end.

Row 7: Knit.

Row 8, 9, 10, 11: As 2nd row.

Row 12: Purl.

Row 13: As 6th row.

Row 14: * K1, P4, K3, rep from * to end.

Row 15: * P2, K4, P2, rep from * to end.

Row 16: * K3, P4, K1, rep from * to end.

Row 17: As 2nd row.

Row 18: Purl.

Row 19, 20, 21, and 22: As 6th row.

These 22 rows form the patt.

Inc one st at each end of last row for 3rd and 4th sizes only. 120 (120, 130, 130) sts.

Shape top

Row 1: dec row – * K10 (10, 11, 11), K2tog, rep from * to end – 110 (110, 120, 120) sts.

Row 2, 3, 4: Knit.

Row 5: dec row – * K9 (9, 10, 10), K2tog, rep from * to end – 100 (100, 110, 110) sts.

Row 6, 7, 8: Knit.

Row 9: dec row – * K8, (8, 9, 9), K2tog, rep from * to end. 90 (90, 100, 100) sts.

Continue to dec in this manner on every following 4th row until 60 (60, 70, 70) sts, then on every following alt row until 30 (30, 40, 40) sts remain.

Next row: dec row – * K2tog, rep from * to end. 15 (15, 20, 20) sts.

Next row: dec row – * K2tog, rep from * to last 1 (1, 0, 0) st, K1 (1, 0, 0). 8 (8, 10, 10) sts. Break off yarn, leaving enough to thread through remaining sts, draw up tight and fasten off.

Join seams by top sewing, reversing seam for turnback. Make a pom pom or tassel and attach to top.

MITTENS (both alike)

Using 3mm needles, cast on 32 (32, 36, 36) sts. Work 14 rows in garter st.

Change to 3.25mm needles.

Commence patt:

1st and 2nd sizes only

Work in patt as given for Hat.

3rd and 4th sizes only

Work in patt as given for Hat

but working first 2 sts and last 2 sts in st st.

All sizes

Work 5 (6.5, 6.5, 7) cm in patt finishing on a wrong side row.

Shape top

Row 1: dec row – K2tog, K12 (12, 14, 14), [K2tog] twice, K12 (12, 14, 14), K2tog – 28 (28, 32, 32) sts.

Row 2 and 4: Knit.

Row 3: dec row – K2tog, K10 (10, 12, 12), [K2tog] twice, K10 (10, 12, 12), K2tog – 24 (24, 28, 28) sts.

Row 5: dec row – K2tog, K8 (8, 10, 10), [K2tog] twice, K8 (8, 10, 10), K2tog – 20 (20, 24, 24) sts.

Row 6: Knit. Cast off.

Join seam by top sewing, reversing seam for turnback. Make 2 twisted cords and attach to wrists.

TRAINERS (both alike)

Using 3.25mm needles, cast on 35 (35, 41, 41) sts.

Shape sole

Row 1 and foll alt row: 1st row is right side – Knit.

Row 2: inc row – K1, m1, K15 (15, 18, 18), m1, K3, m1, K15 (15, 18, 18), m1, K1 – 39 (39, 45, 45) sts.

Row 4: inc row – K1, m1, K16 (16, 19, 19), m1, K5, m1, K16 (16, 19, 19), m1, K1 – 43 (43, 49, 49) sts.

Row 6: inc row – K1, m1, K17 (17, 20, 20), m1, K7, m1, K17 (17, 20, 20), m1, K1 – 47 (47, 53, 53) sts.

Row 8: inc row – K1, m1, K18 (18, 21, 21), m1, K9, m1, K18 (18, 21, 21), m1, K1 – 51 (51, 57, 57) sts.

Work 2 rows in garter st.

Work 8 rows in st st. Mark 1st row with a coloured thread.

Next row: make tuck – * Pick up loop from wrong side 8 rows down (marked row) and

K tog with next st on needle,
rep from * to end.
Work 13 rows in g st.
Work 8 rows in st st. (Mark 1st
row with a coloured thread.)
Work tuck row once more.
Next row: Knit.

Shape top

Next row: K31 (31, 35, 35),
turn.
Next row: K11 (11, 13, 13), turn.
Next row: K10 (10, 12, 12),
K2tog, turn.
Rep the last row 11 times
more, turn, K to end. 39 (39,
45, 45) sts.
Work 8 rows in g st.
Work 2 rows in st st.
Next row: make eyelet holes
– K16 (16, 19, 19), K2tog, yfwd,
K3, yfwd, K2tog, K16 (16, 19,

19).
Commencing on a P row, work
7 rows in st st.
Cast off and make hem – *
[Pick up st 10 rows below and
place on left hand needle, K
tog with next st] twice then
cast off, rep from * to end.
Fasten off.

Join back seam by top
sewing, leaving opening
in hem. Make 2 twisted
cords and thread through
openings.

Wool available.

Wentworth Distributors NZ Ltd
Free phone NZ: 0800 738 998
Free phone AU: 1800 150 542
www.NaturallyYarnsNZ.com



freestyle – for freedom of style

SPECIAL READER OFFER
BUSINESS CARDS (double-sided)
designed* and 500 printed
ONLY \$275
* logo design extra

Advertising
Brochures
Booklets
Logos
Letterheads
Business cards
Annual reports

Contact: Hayley
Phone/Fax: 02 4739 4818
Email: hjagger@bigpond.net.au

freestyle graphic design

creativecraftclass.com

Handmade felt – Hand knit designs
Created by you

info@creativecraftclass.com

Two fantastic Queensland Locations
Brisbane & Noosa
Quality informative Tuition
Ph 5470 2500

GIRL'S DRESS WITH STRIPES

Stripes of fun for little girls.



BACK

Using 4.00mm needles and M, cast on 74 (82, 86, 94, 98) sts. Beg Band Patt

Row 1: K2, * P2, K2, rep from * to end.

Row 2: P2, * K2, P2, rep from * to end.

Last 2 rows form band patt. Rep last 2 rows twice (6 rows band patt in all).

Beg stripes and shape sides
Work 62 rows stocking st in stripes of 10 rows C, 4 rows M, 8 rows C, (4 rows M, 4 rows C) 5 times, AT SAME TIME dec one st at each end of first row, then in every foll 18th (18th, 24th, 22nd, 28th) row 3 (3, 2, 2, 2) times. 66 (74, 80, 88, 92) sts.

Using M for rem, cont in stocking st, dec one st at each end of 11th (11th, 11th, 5th, 23rd) row, then in every foll 16th (16th, 22nd, 20th, 26th) row until 62 (68, 74, 80, 86) sts rem.

Work 11 (13, 15, 11, 11) rows.

Shape Armholes

Cast off 2 (3, 3, 3, 4) sts at beg of next 2 rows. 58 (62, 68, 74, 78) sts.

Dec one st at each end of next row, then in every foll alt row until 52 (56, 60, 66, 68) sts rem. **

Work 27 (31, 31, 37, 39) rows.

Shape Back Neck

Next Row: K12 (14, 15, 18, 19), turn.

Cont on these 12 (14, 15, 18,

19) sts for right side of back neck.

Next Row: P2tog, purl to end.

Shape Shoulder

Row 1: Cast off 5 (6, 6, 8, 8) sts, knit to last 2 sts, K2tog.

Row 2: P2tog, purl to end.

Cast off rem 4 (5, 6, 7, 8) sts. Slip next 28 (28, 30, 30, 30) sts onto a stitch holder and leave for neckband.

With right side facing, join M to rem sts, knit to end.

Cont on these 12 (14, 15, 18, 19) sts for left side of back neck.

Dec one st at neck edge in every row until 10 (12, 13, 16, 17) sts rem.

Shape Shoulder

Row 1: Cast off 5 (6, 6, 8, 8) sts, purl to last 2 sts, P2tog.

Row 2: Knit to end.

Cast off rem 4 (5, 6, 7, 8) sts.

FRONT

Work as given for Back to **. Work 7 (11, 9, 15, 17) rows.

Shape Neck

Next Row: K19 (20, 22, 24, 25) sts, turn.

Cont on these 19 (20, 22, 24, 25) sts for left side of front neck.

Dec one st at neck edge in every row until 15 (16, 18, 20, 21) sts rem, then in every foll alt row until 11 (13, 15, 18, 19) sts rem, then in every foll 4th row until 9 (11, 12, 15, 16) sts rem.

Work 1 (3, 1, 3, 3) rows.

Shape Shoulder

Cast off 5 (6, 6, 8, 8) sts at beg of next row.

Work 1 row.

Cast off rem 4 (5, 6, 7, 8) sts. Slip next 14 (16, 16, 18, 18) sts onto stitch, holder and leave for neckband.

With right side facing, join M to rem sts, knit to end.

Cont on these 19 (20, 22, 24, 25) sts for right side of front neck.

Dec one st at neck edge in every row until 15 (16, 18, 20, 21) sts rem, then in every foll alt row until 11 (13, 15, 18, 19) sts rem, then in every foll 4th row until 9 (11, 12, 15, 16) sts rem.

Work 2 (4, 2, 4, 4) rows.

Cast off 5 (6, 6, 8, 8) sts sts at beg of next row.

Work 1 row.

Cast off rem 4 (5, 6, 7, 8) sts.

SLEEVES

Using 4.00mm needles and M, cast on 50 (50, 54, 54, 58) sts.

Work 6 rows band patt as given for Back, inc one st at each end of 5th row. 52 (52, 56, 56, 60) sts.

Beg stripes and shaping:

Work in stocking st in stripes of 8 rows C, 4 rows M, 4 rows C and then rem in M, AT SAME TIME work sleeve shaping as folls:

Inc one st at each end of first row, Sizes 4, 6, 8 and 10 years only, then in every foll alt row until there are (56, 60, 62, 64) sts.

All Sizes. 54 (56, 60, 62, 64) sts.

Work 3 (1, 3, 1, 7) rows.

Shape Top

Cast off 1 (2, 2, 2, 2) sts at beg of next 2 rows. 52 (52, 56, 58, 60) sts.

Dec one st at each end of next

SKILL LEVEL**WHAT YOU'LL NEED****Yarn**

Panda Cotton blend 8 ply 50gm
4, 5, 6, 7, 8 x Main colour #11 Violet
2, 2, 2, 2, 3 x Contrast Colour #1 White

Needles

4.00mm knitting needles
4.00mm double, pointed knitting needles
2 stitch holders
Wool sewing needle

Tension

22 sts by 30 rows to 10cm over stocking st, using 4.00mm needles



row, then in every foll alt row until 48 (44, 48, 44, 44) sts rem, then in every row until 14 sts rem.

Cast off rem 14 sts.

PATCH POCKETS (MAKE 2)

Using 4.00mm needles and M, cast on 10 sts.

Knit 1 row.

Working in stocking st (beg with a purl row), inc one st at each end of every row until there are 14 sts, then in every foll alt row until there are 20 sts.

Work 9 rows.

Beg Band Patt

Row 1: K3, * P2, K2, rep from * to last st, K1.

MEASUREMENTS

SIZE	2	4	6	8	10
TO FIT CHEST CM	55	60	65	70	75
GARMENT LENGTH CM	47	54	60	64	68
SLEEVE LENGTH CM	3	3	4	4	5

GIRL'S DRESS WITH STRIPES



Row 2: P3, * K2, P2, rep from * to last st, P1.

Rep last 2 rows twice. 6 rows rib.

Cast off loosely in rib.

NECKBAND

Join shoulder seams. With right side facing, using a set of 4.00mm double pointed needles and M, beg at left shoulder seam, knit up 20 (21, 22, 23, 23) sts evenly along left side of front neck, knit across sts from front stitch, holder, knit up 20 (21, 22, 23, 23) sts evenly along right side of front neck to shoulder, knit up 5 sts evenly along right back neck shaping, knit across sts from back stitch, holder, then knit up 5 sts evenly along left back neck

shaping. 92 (96, 100, 104, 104) sts.

Round 1: * K2, P2, rep from * to end.

Last round forms rib for neckband.

Rep last round 5 times. 6 rounds rib in all.

Cast off loosely in rib.

MAKING UP

Do not press. Placing centre of sleeve to shoulder seam, sew in sleeves evenly. Join side and sleeve seams, matching stripes. Sew patch pockets in position as illustrated.

Wool available.

Panda Yarns

www.pandayarns.biz

Ph: 1800 337 032

Wondoflex Yarn Craft Centre

Est. 1938



Stockists of beautiful quality yarns from Australia, New Zealand, Italy, Germany, France and the United Kingdom.

Visit us at 1353 Mahvern Road, Mahvern 3144
or shop online safely at: www.wondoflex.com.au

Phone: (03) 9822 6231

KNITTING YARNS BY MAIL

www.knittingyarns.com.au



Your one stop shop for the very best yarns, knitting patterns, needles and accessories.

FREE catalogue now available

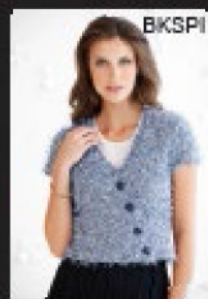
Knitting yarns by mail

114 Fox & Fancles Rd, Boolarra Stn, Vic 3870
alison@knittingyarns.com.au Ph: 0408 992 927

FILATURA DI CROSA



CRISTAL, SPIGA & LOVELY JEANS



WENTWORTH DISTRIBUTORS NZ LTD. PROUDLY DISTRIBUTES:

**FILATURA
DI CROSA**

IC

Naturally

Wendy

Peter Pan

Miss Alpaca

For details of local stockists visit
www.NaturallyYarnsNZ.com

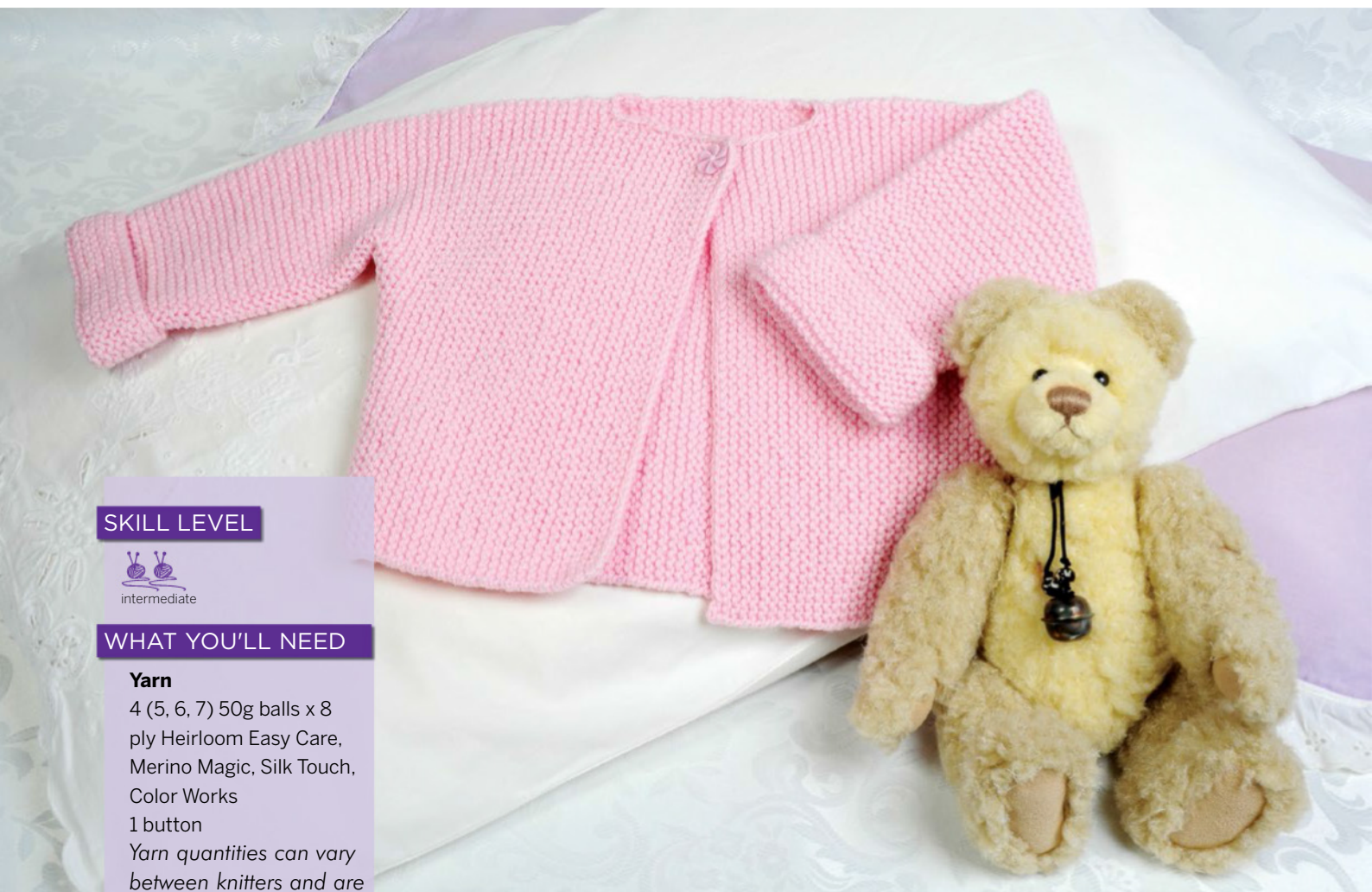
FREE PHONE

(AU): 1800 150 542

(NZ): 0800 738 998

LITTLE DARLING

A one piece garter stitch jacket – knitted sideways. Design by Heirloom Yarns.



SKILL LEVEL



WHAT YOU'LL NEED

Yarn

4 (5, 6, 7) 50g balls x 8 ply Heirloom Easy Care, Merino Magic, Silk Touch, Color Works

1 button

Yarn quantities can vary between knitters and are therefore approximate requirements. Use only Heirloom yarns as specified

Needles

1 pair 4.00mm knitting needles

1 stitch holder

Tension

21 sts by 44 rows to 10cm over garter stitch pattern

STITCH GUIDE

Garter st = every row knit.

Begin at Left Sleeve

Using 4.00mm needles, cast on 36 (40, 44, 48) sts.

Work 16 rows garter st.

Tie a marker at each end to indicate end of cuff.

Cont in garter st until work measures 9 (11, 16, 19) cm from marker.

Begin Increase for Back and Left Front

Cast on 5 sts at beg of next 6 rows 66 (70, 74, 78) sts.

Cast on 11 (15, 20, 26) sts at beg of next 2 rows.

88 (100, 114, 130) sts.

Work 26 (30, 36, 40) rows garter st.

Divide for Neck

Next row: K44 (50, 57, 65)

sts, cast off next 2 sts, knit to end.

Cont on these 42 (48, 55, 63) sts for left Front.

Work 23 (23, 25, 27) rows.

Cast off loosely knitways.

With wrong side facing join yarn to rem 44 (50, 57, 65) sts for Back, knit to end.

Work 37 (37, 39, 43) rows.

Leave Back sts on a stitch holder.

Begin Right Front**(separately):**

Using 4.00mm needles, cast on 42 (48, 55, 63) sts.

Work 2 rows.

Next row: K3, yfwd, K2tog for buttonhole, knit to end.

Work 20 (20, 22, 24) rows.

Next row: Knit to end, turn, cast on 2 sts, turn, knit across sts from back stitch holder. 88 (100, 114, 130) sts.

Work 26 (30, 36, 40) rows garter st.

Cast off 11 (15, 20, 26) sts at beg of next 2 rows. 66 (70, 74, 78) sts.

Cast off 5 sts at beg of next 6 rows.

36 (40, 44, 48) sts.

Cont in garter st until work measures 9 (11, 16, 19) cm from last cast off.

Tie a marker at each end of last row to indicate beg of cuff.

Work 16 rows.

Cast off knitways.

TO MAKE UP

Join side and sleeve seams noting to reverse seam at markers for turn back cuff. Sew button onto Left Front. Turn back cuff.

Optional – Work 1 row Double Crochet or Crab St along neck edge.

Wools available.

Heirloom Yarns

The Australian Yarn Company
Ph: 03 9770 8155

www.rdmorgan.com.au

MEASUREMENTS				
TO FIT CHEST CM	35	40	45	50
FINISHED FIT CM	50	56	62	68
GARMENT LENGTH CM	21	24	27	31
SLEEVE LENGTH CM	11	13	16	19



**U.S. and
Canadian
Subscribers***

International craft magazines now available from **one** North American source in U.S. or Canadian funds.

Call TODAY for Special Subscription **DISCOUNT OFFERS** and your **FREE CATALOGUE** of these and all of our other arts and crafts publications.

1-800-461-1640
e-mail: subs@craftmags.com



*Shipped FREE, direct from Buffalo, NY or Toronto

NOW AVAILABLE:

*Embroidery & Cross Stitch • Handmade
Australian Country Threads • Patchwork & Stitching
Australian Stitches • Machine Embroidery
Country Patchwork & Craft • Australian Patchwork
& Quilting and many more!*

Stonehouse Publications
www.craftmags.com

DRAPED COAT

This draped coat design is made in two sections from left to right, with a swing allowance in the lower section.

SKILL LEVEL



WHAT YOU'LL NEED

Yarn

Long sleeve coat
5 (6, 8, 9, 10, 11) x 50gm
balls Flirt DK
¾ length sleeve
4 (6, 7, 8, 9, 10) x 50gm
balls Flirt DK

Needles

3.25mm knitting needles
4mm knitting needles

Tension

22sts by 28 rows to 10cm
over stocking stitch on
4mm needles.

Special abbreviations

Wrap 1 = slip next st onto
right hand needle and
take yarn to opposite
side of work between
needles, slip the same st
back onto the left hand
needle.

STITCH GUIDE

This garment is knitted in
two sections – a lower front
left back and right front, and
upper left sleeve back and
right sleeve – working from
the left to right.

LONG SLEEVED DRAPE COAT LOWER BACK

Using 4mm needles and
thumb method cast on 54
(62, 70, 74, 76, 78) sts.

Row 1: knit. Place marker C at
end of row.

Row 2: Purl.
Continue working in stocking
stitch throughout proceed as
follows:

Work 13 (13, 19, 19, 19, 21)
rows. Place marker C for back
neck border at end of last row.
Next row: Cast off 20 (22, 24,
28, 28, 30) sts, purl to end.
Work 48 (56, 62, 70, 76, 84)
rows. Place marker A at beg of
last row.

Shape Side

Next row: * K2, wrap 1, turn.

Next row: Purl.

Next row: K7 (8, 9, 9, 9, 9)
wrap 1, turn.

Next row: Purl.

Next row: K12 (14, 16, 16, 16,
16), wrap 1, turn.

Next row: Purl.

Work 8 rows working 5 (6, 7,
7, 7, 7) sts more in each wrap
1, turn.

Next row: K27 (26, 30, 30, 30,
30), wrap 1, turn.

Next row: Purl.

Work 8 rows working 5 (6, 7,
7, 7, 7) sts less in each wrap 1,
turn. *

Next row: work across all sts.

BACK

Work 98 (112, 126, 140, 154,
168) rows in stocking st. Place
marker B at beg of last row.

Shape Side

Work as given for shape side
of left front from * to *.

RIGHT FRONT

Next row: Work across all sts.

Work 48 (56, 62, 70, 76, 84)
rows.

Next row: knit to end, cast
on 20 (22, 24, 28, 28, 30) sts.
Place marker C for back neck
border at end of cast on sts.

Next row: Purl to end.

Work 14 (14, 20, 20, 20, 22)
rows. Place marker C at beg of
last row.

Cast off.

UPPER BACK AND SLEEVES

Left Sleeve

Using 3.25mm needles and
thumb method cast on 46
(50, 52, 56, 60, 62) sts.

Next row: Knit.

Work 3 more rows of knit.
Change to 4mm needles
and working in stocking
st throughout proceed as
follows:

Inc 1 st at each end of 27th
(37th, 41st, 41st, 41st, 41st)
and every foll 10th (8th, 6th,
6th, 6th, 4th) row to 58 (62,
58, 70, 86, 78) sts.

**For 2nd, 3rd, 4th, 5th, and
6th size only:**

Inc 1 st at each end of every
foll (10th, 8th, 8th, 8th, 6th)
rows without shaping. Place
marker A at each end of last
row for sleeve seam.

Shape Neck

** Next row: Cast off 4 (4, 4,
4, 6, 6) sts (neck edge), purl
to end. 54 (62, 70, 76, 82, 90)
sts.

For 2nd, 3rd, 5th, and 6th
sizes only:

Work (4, 2, 2, 2) rows without
shaping.

For 4th size only:

Work 6 rows dec 1 st at neck
edge in 3rd row. (75) sts.

For all sizes:

Work 33 (35, 43, 43, 51, 59)
rows dec 1 st at neck edge in
next and every foll alt row. 37
(44, 48, 53, 56, 60) sts.

Shape Back Neck

Next row: cast off 8 (11, 11,

MEASUREMENTS

TO FIT BUST CM	61-66	71-76	81-86	91-97	102-107	112-117
FINISHED FIT CM	70	80	90	101	111	121
GARMENT LENGTH CM	28	33	38	40	42	44
SLEEVE LENGTH ¾ CM	20	25	30	30	31	31
LONG SLEEVE CM	33	41	48	48	49	50





12, 12, 12) sts (neck edge), purl to end. 29 (33, 37, 41, 44, 48) sts.
Work 28 (30, 36, 36, 36, 42) rows without shaping. Place marker C at centre of these rows for centre back of neck. Next row: Knit to end (neck edge), cast on 8 (11, 11, 12, 12, 12) sts. 37 (44, 48, 53, 56, 60) sts.

Shape Neck

Next row: Purl.

Work 34 (36, 44, 44, 52, 60) rows.

Inc 1 st at neck edge in next and every foll alt row. 54 (62, 70, 75, 82, 90) sts.

For 2nd, 3rd, 5th, and 6th sizes only:

Work (4, 2, 2, 2) rows without shaping.

For 4th size only:

Work 6 rows inc 1 st at neck edge in 3rd row (76) sts.

For all sizes:

Next row: knit to end, cast on 4 (4, 4, 4, 6, 6) sts. 58 (66, 74, 80, 88, 96) sts. Place marker B at each end of last row for sleeve seam. **

RIGHT SLEEVE

Work 9 (13, 13, 13, 13, 13) rows without shaping.

Dec 1 st at each end for next and every foll 10 (10th, 8th, 8th, 8th, 6th) row to 46 (60, 56, 68, 84, 76) sts.

For 2nd, 3rd, 4th, 5th and 6th sizes only:

Dec 1 st at each end of every foll (8th, 6th, 6th, 6th, 4th) row to (50, 52, 56, 60, 62) sts.

For all sizes:

Work 26 (36, 40, 40, 40, 40) rows without shaping.

Change to 3.25mm needles and work 4 rows of Knit.

Cast off knitways.

¾ SLEEVED DRAPE COAT LOWER BACK

Work lower back, left and right fronts as given for lower back left and right of long sleeved drape coat.

UPPER BACK AND SLEEVES

Using 3.25mm needles and thumb method cast on 50 (56, 58, 62, 64, 66) sts work 4 rows in knit.

Change to 4mm needles and working in stocking st throughout proceed as follows:

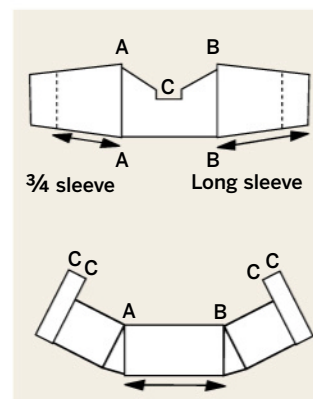
Inc 1 st at each end of 11th (13th, 7th, 11th, 7th, 7th) and every foll 10th (10th, 8th, 6th, 4th, 4th) row to 58 (66, 70, 72, 70, 90) sts.

For 3rd, 4th, 5th, and 6th sizes only:

Inc 1 st at each end of every foll (10th, 8th, 6th, 6th) row to (74, 80, 88, 96) sts.

For all sizes:

Work 10 (14, 14, 14, 14, 14) rows without shaping. Place marker A at each end of last row. Work ** to ** as given for upper back, left and right front of long sleeved drape coat.



Right Sleeve

Work 9 (13, 13, 13, 13, 13) rows without shaping.

Dec 1 st at each end of next and every foll 10th (10th, 10th, 8th, 6th, 6th) row to 50 (56, 68, 70, 68, 88) sts.

For 3rd, 4th, 5th, and 6th sizes only:

Dec 1 st at each end of every foll (8th, 6th, 4th, 4th) row to (58, 62, 64, 66) sts.

For all sizes:

Work 10 (12, 6, 10, 6, 6) rows without shaping.

Change to 3.25mm needles and work 4 knit rows.

Cast off knitways.

MAKING UP

Sew sleeve seams to markers A and B. Join lower back to upper back from marker A to B. Join back neck border seam from markers C to C. Place back neck border seam to marker C at centre back of neck and sew back neck order and neck edge seams in position. Pin out garment to measurements given. Cover with damp cloths and leave until dry.

Yarn available.

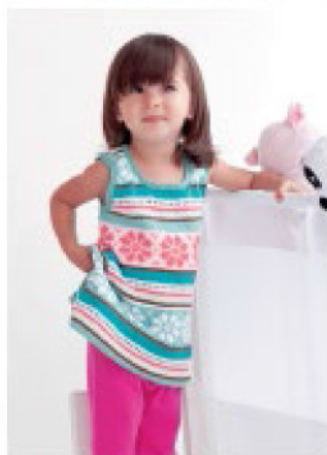
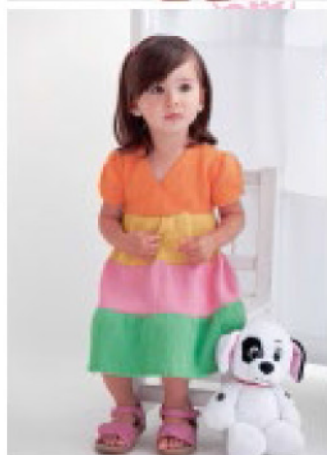
Creative Image

Ph: 03 5979 1555



**FILATURA
DI CROSA**

Dolce Amore



For details of local stockists
www.NaturallyYarnsNZ.com

FREE PHONE

(AU): 1800 150 542

(NZ): 0800 738 998

Wentworth Distributors NZ Ltd.
proudly distributes:



Gondy *Peter Pan* *Merino Alpaca*

BKDA2

GILET WITH HOOD

Twilleys of Stamford Design

BACK

Using 3.25mm needles and A,
cast on 62 (70, 74, 82) sts.

Row 1: RS - K2, * P2, K2, rep
from * to end.

Row 2: P2, * K2, P2, rep from
* to end.

These 2 rows form rib.

Work in rib for a further 12
rows, inc (dec, inc, dec) 1 st at
end of last row and end with a
ws row. 63 (69, 75, 81) sts.

Change to 4mm needles.

Starting with a K row, work in

SKILL LEVEL



intermediate

WHAT YOU'LL NEED

Yarn

3 (3, 3, 4) balls Twilleys
Freedom Gorgeous DK
50g Main Colour (A)
1 (1, 2, 2) balls Contrast
Colour (B)
6 buttons

Needles

3.25mm knitting needles
4mm knitting needles

Tension

22 stitches by 28 rows
to 10cm over st st using
4mm needles.

HAND KNIT YARNS by

Naturally
IT'S PURE
NEW ZEALAND



striped st st as follows:
Join in B.
Using B, work 16 rows.
Using A, work 16 rows.
These 32 rows form striped st st.
Cont in striped st st until back measures 19 (22, 26, 29) cm end with a WS row.

Shape armholes:

Keeping stripes correct, cast off 4 sts at beg of next 2 rows. 55 (61, 67, 73) sts.
Dec 1 st at each end of next 5 (5, 7, 7) rows, then on foll 2 (3, 2, 3) alt rows. 41 (45, 49, 53) sts.
Cont straight until armhole measures 13 (14, 15, 16) cm, end with a WS row.

Shape shoulders and back neck:

Next row: RS cast off 3 (4, 4, 5) sts, K until there are 7 (7, 8, 8) sts on right needle and turn, leaving rem sts on a holder.
Work on this set of sts only for first side of neck.
Cast off 3 sts at beg of next row.
Cast off rem 4 (4, 5, 5) sts.
Return to sts left on holder, rejoin appropriate yarn with rs facing, cast off centre 21 (23, 25, 27) sts and K to end.
Cast off 3 (4, 4, 5) sts at beg of next row, then 3 sts at beg of foll row.
Cast off rem 4 (4, 5, 5) sts.

LEFT FRONT

Using 3.25mm needles and A, cast on 31 (35, 35, 39) sts.
Row 1: RS - K2, * P2, K2, rep from * to last st, K1.
Row 2: K1, P2, * K2, P2, rep from * to end.
These 2 rows form rib.
Work in rib for a further 12 rows, dec (dec, inc, 0) 1 (2, 1, 0) sts evenly across last row and end with a WS row. 30 (33, 36, 39) sts.

Change to 4mm needles.
Starting with a K row and 16 rows using yarn B, work in striped st st as given for back until left front matches back to start of armhole shaping, ending with a WS row.

Shape armhole:

Keeping stripes correct, cast off 4 sts at beg of next row. 26 (29, 32, 35) sts.
Work 1 row.
Dec 1 st at armhole edge of next 5 (5, 7, 7) rows, then on foll 2 (3, 2, 3) alt rows. 19 (21, 23, 25) sts.
Cont straight until 15 (15, 17, 17) rows less have been worked than on back to start of shoulder shaping, ending with a RS row.

Shape neck:

Keeping stripes correct, cast off 4 (5, 5, 6) sts at beg of next row. 15 (16, 18, 19) sts.
Dec 1 st at neck edge of next 5 rows, then on foll 3 (3, 4, 4) alt rows. 7 (8, 9, 10) sts.
Work 3 rows, end with a WS row.

Shape shoulder:

Cast off 3 (4, 4, 5) sts at beg of next row.
Work 1 row.
Cast off rem 4 (4, 5, 5) sts.

RIGHT FRONT

Using 3.25mm needles and A, cast on 31 (35, 35, 39) sts.
Row 1: RS - K3, * P2, K2, rep from * to end.
Row 2: P2, * K2, P2, rep from * to last st, K1.
These 2 rows form rib.
Work in rib for a further 12 rows, dec (dec, inc, 0) 1 (2, 1, 0) sts evenly across last row and end with a WS row – 30 (33, 36, 39) sts.
Change to 4mm needles.

Starting with a K row and 16 rows using yarn B, work in striped st st as given for back until right front matches back to start of armhole shaping, ending with a RS row.

Shape armhole:

Keeping stripes correct, cast off 4 sts at beg of next row. 26 (29, 32, 35) sts.
Dec 1 st at armhole edge of next 5 (5, 7, 7) rows, then on foll 2 (3, 2, 3) alt rows. 19 (21, 23, 25) sts.
Cont straight until 14 (14, 16, 16) rows less have been worked than on back to start of shoulder shaping, ending with a WS row.

Shape neck:

Keeping stripes correct, cast off 4 (5, 5, 6) sts at beg of next row. 15 (16, 18, 19) sts.
Dec 1 st at neck edge of next 5 rows, then on foll 3 (3, 4, 4) alt rows. 7 (8, 9, 10) sts.
Work 3 rows, end with a RS row.

Shape shoulder

Cast off 3 (4, 4, 5) sts at beg of next row.
Work 1 row.
Cast off rem 4 (4, 5, 5) sts.

HOOD

Using 3.25mm needles and A, cast on 116 (120, 124, 128) sts.
Row 1: RS - K3, * P2, K2, rep from * to last st, K1.
Row 2: K1, P2, * K2, P2, rep from * to last st, K1.
These 2 rows form rib.
Work in rib for a further 4

rows, end with a WS row.
Change to 4mm needles.
Starting with a K row, work in st st, dec 1 st at each end of next and foll 7 alt rows. 100 (104, 108, 112) sts.
Cont straight until hood measures 15 (16, 16, 17) cm, end with a WS row.
Place marker between centre 2 sts of last row.
Next row: RS K to within 2 sts of marker, K2tog, slip marker onto right needle, K2tog tbl, K to end.
Next row: Purl.
Rep last 2 rows 3 times more. 92 (96, 100, 104) sts.
Next row: RS - K to within 2 sts of marker, K2tog, slip marker onto right needle, K2tog tbl, K to end.
Next row: P to within 2 sts of marker, P2tog tbl, slip marker onto right needle, P2tog, P to end.
Rep last 2 rows twice more, end with a WS row.
Cast off rem 80 (84, 88, 92) sts.

ARMHOLE BORDERS (BOTH ALIKE)

Join both shoulder seams.
With RS facing, using 3.25mm needles and A, pick up and knit 70 (74, 78, 82) sts evenly all round armhole edge.
Starting with row 2, work in rib as given for back for 5 rows, end with a WS row.
Cast off in rib.

BUTTON BAND

With RS facing, using 3.25mm needles and A, pick up and

MEASUREMENTS

SIZE AGE: 2-7 YEARS

TO FIT CHEST CM:	51	56	61	66
FINISHED FIT CM:	57	63	68	74
GARMENT LENGTH CM:	32	36	41	45

GILET WITH HOOD



knit 68 (76, 88, 100) sts evenly along one front opening edge (left front for a girl, or right front for a boy), between neck shaping and cast-on edge.

Row 1: WS - K1, P2, * K2, P2, rep from * to last st, K1.

Row 2: K3, * P2, K2, rep from * to last st, K1.

These 2 rows form rib.

Work in rib for a further 3 rows, ending with a WS row.

Cast off in rib.

BUTTONHOLE BAND

With RS facing, using 3.25mm needles and A, pick up and knit 68 (76, 88, 100) sts evenly along other front opening edge, between neck shaping and cast-on edge.

Work in rib as given for button band for 2 rows, end with a RS row.

Row 3: WS – rib 3 (2, 3, 2), * yrn, work 2 tog (to make

a buttonhole), rib 10 (12, 14, 17), rep from * 4 times more, yrn, work 2 tog (to make 6th buttonhole), rib 3 (2, 3, 1). Work in rib for a further 2 rows, end with a WS row. Cast off in rib.

MAKING UP

Join side and armhole border seams. Fold hood in half and join cast-on edges to form back seam. Matching hood seam to centre back neck and positioning ends of hood cast-off edge halfway across top of bands, sew shaped row-end edges of hood to neck edge, easing in slight fullness. Sew on buttons.

Wools available.

Wentworth Distributors NZ Ltd

Free phone NZ: 0800 738 998

Free phone AU: 1800 150 542

www.NaturallyYarnsNZ.com

See your colours in perfect natural light, day and night



The 18w low heat daylight tube in the professional artist lamp gives you more natural daylight than ever before making perfect colour matching so much easier. The Daylight tube shows you true colours and reduces the eye strain caused by glare.

The professional artist lamp comes with a fully flexible arm and two unique clamps, one for easels and one for tables. So pick up your brushes now and start working on your next masterpiece.

Mix and match perfect colours anytime of the day!



art tracing light box
A32000



compact lamp
A33050



ultraslim fluorescent
A22020

For more information: 07 3283 3092 or www.daylightcompany.com



FILATURA
DI CROSA

SPRING / SUMMER



BKMF1



BKTP1



BKMF1

New from FILATURA DI CROSA

Available in Fine Yarn Stores in AU and NZ



LELX2



LEBD1



LELX3

For details of local stockists
www.NaturallyYarnsNZ.com

FREE PHONE

(AU): 1800 150 542

(NZ): 0800 738 998

Wentworth Distributors NZ Ltd.
proudly distributes:

FILATURA
DI CROSA



Wendy Peter Pan Naturally

HAND KNOT YARNS

GLOSSARY

BEGINNER'S TOOL KIT

PINS

Plastic-head pins are useful for checking tension and blocking out items. Pins with coloured heads are best because they do not get lost in your work.



ROW COUNTER

A row counter is helpful for keeping track of rows worked, particularly where increases, decreases or other kinds of patterning occur.



KNITTING NEEDLES

Knitting needles are made from plastic, aluminium or wood and come in varying lengths and widths. Straight needles come in pairs and doublepointed needles come in sets of four.



KNITTING BAG

A knitting bag is essential for those who like to knit 'on the go'. Not only is it a practical way to keep all your knitting paraphernalia together, it also helps keep the yarn clean and tangle-free.



CIRCULAR KNITTING NEEDLES

Circular needles have two working ends joined by a thin nylon wire. They are more balanced than straight needles and allow the weight of your work to rest in your lap.



KNITTING IN ELASTIC

Elastic yarn prevents sagging in cuffs, collars and waists. You can work it in with knitting yarn on knitted or crocheted garments.



TAPE MEASURE

A basic tape measure is essential for checking your garment measurements.

KNITTER'S NEEDLES

Knitter's needles need to have a large eye and a blunt point so they do not split stitches when sewing up your knitting.



STITCH GAUGE

A stitch gauge is a flat piece of metal or plastic with a ruler marked on one side and/or a window

cut out in the centre. It allows you to mark and measure easily and accurately.

STITCH HOLDER

A stitch holder is used to secure stitches not in use. You can also use safety pins for holding a small number of stitches.

Diagram 1

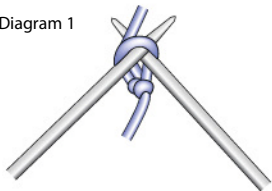
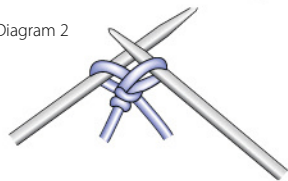


Diagram 2



CASTING ON

Casting on is creating a row of loops on a knitting needle to form the base row for your knitting. One of the most popular methods of casting on is the cable cast on. Form a slipknot about 25cm away from the end of the yarn.

Place the slipknot on a knitting needle and pull gently to secure. Hold this needle in your left hand. Insert the right-hand needle through the slip knot. Pass the yarn over the point of the right-hand needle (see Diagram 1).

Pull a loop through the slip knot with the right-hand needle (see Diagram 2). Place this loop on the left-hand needle and gently pull the yarn to secure the stitch. For the remaining cast-on stitches, insert the right-hand needle between the slip knot and the first stitch on the left-hand needle. Wind the yarn around the point of the right-hand needle. Draw a loop through and place this loop on the left-hand needle. Continue in this manner until you have cast on the desired number of stitches.

KNIT STITCH

Diagram 1

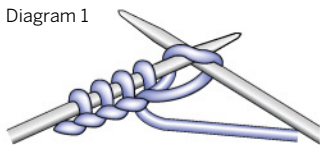
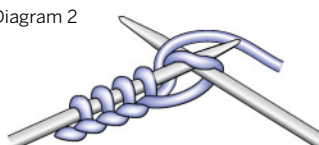


Diagram 2



Once you have cast on, you then knit into the stitches you have made to form the knitted fabric. Hold the needle with the cast on stitches in your left hand, with the loose yarn at the back of your work. Insert the right-hand needle from left to right through the front of the first stitch on the left-hand needle (see Diagram 1). Wind the yarn from left to right over the point of the right-hand needle (see Diagram 2). Draw the

yarn through the stitch to form a new stitch on the right-hand needle. Slip the original stitch off the left-hand needle, keeping the new stitch on the right-hand needle. To knit a row, repeat these steps until all the stitches have been transferred from the left-hand needle to the right-hand needle. Turn your work, transferring the needle with the stitches on into your left hand to work the next row.

PURL STITCH

Diagram 1

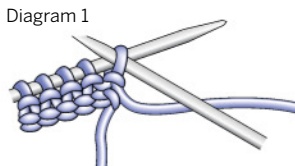
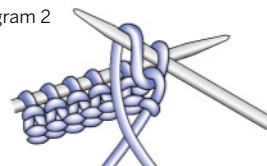


Diagram 2



The purl stitch is basically the reverse of the knit stitch. Hold the needle with the stitches on in your left hand, with the loose yarn at the front of your work. Insert the right-hand needle from right to left into the front of the first stitch on the left-hand needle (see Diagram 1). Wind the yarn from right to left over the point of the right-hand needle (see Diagram 2). Draw the yarn through the

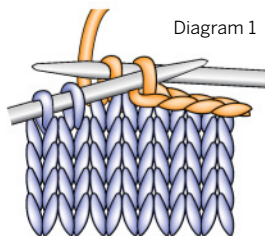
stitch to form a new stitch on the right-hand needle. Slip the original stitch off the left-hand needle, keeping the new stitch on the right-hand needle. To purl a row, repeat these steps until all the stitches have been transferred from the left-hand needle to the right-hand needle. Turn your work, transferring the needle with the stitches on into your left hand to work the next row.

CASTING OFF

KNITWISE

Knit two stitches. Use the point of the left-hand needle to lift the first stitch on the right-hand needle over the second, and drop it off the needle. Knit the next stitch on the left-hand needle so that there are two stitches on the right-hand needle again, and repeat. Continue in this manner until all the stitches have been worked off the left-hand needle and only one stitch remains on the right-hand needle. Cut the yarn, leaving a tail and thread the yarn through the loop and pull it firmly to fasten off.

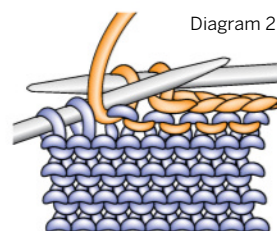
Diagram 1



PURLWISE

Purl two stitches. Use the point of the left-hand needle to lift the first stitch on the right-hand needle over the second, and drop it off the needle. Purl the next stitch on the left-hand needle so that there are two stitches on the right-hand needle again, and repeat. Continue in this manner until all the stitches have been worked off the left-hand needle and only one stitch remains on the right-hand needle. Secure this last stitch as described in casting off knitwise.

Diagram 2



SUBSTITUTING YARNS

If you substitute or spin a yarn for a project, you can compare the weight of the yarn to the project yarn by comparing wraps per inch. Wrap your yarn around a ruler for one inch and count the number of wraps. If you have more wraps per inch than the project yarn, your yarn is too thin; if you have fewer wraps per inch than the project yarn, your yarn is too thick.



KNITTING TENSION

Checking your knitting tension, that is, the tightness or looseness of your knitting, is important. To check your tension, cast on 30 stitches using the recommended needle size. Work in the pattern until your work measures 10cm from the cast on edge then cast off. You now have a "swatch". Measure your tension by placing a ruler over your swatch and counting the number of stitches

across and rows down (including fractions of stitches and rows) in 10cm. Repeat these measurements two to three times on a different parts of the swatch to check your measurements. If you have more stitches and rows than called for in the instructions, you should use larger needles; if you have fewer, use smaller needles. Check your tension again before starting your project.

PROVISIONAL CAST ON (INVISIBLE CAST ON)

Place a loose slipknot on the needle in your right hand. Hold the waste yarn next to the slipknot and around your left thumb. Hold your working yarn over your left index finger.

*Bring the needle forward under the waste yarn, over the working yarn, grab a loop of working yarn (Diagram

1), then bring the needle to the front, over both yarns, and grab a second loop (Diagram 2). Repeat from * until you have the desired number of stitches on your needle. When you're ready to work in the opposite direction, pick out the waste yarn to expose the live stitches.

Diagram 1

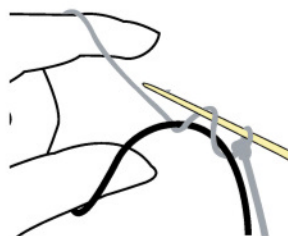
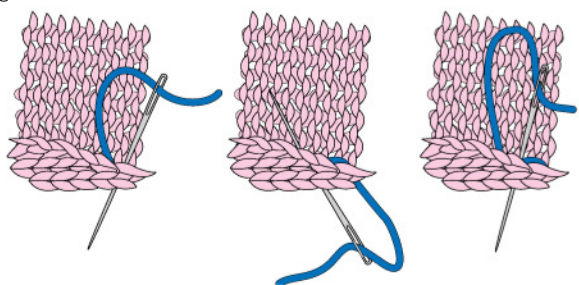


Diagram 2



Diagram 1



BACKSTITCH

This is the stitch most commonly used for joining knitted garments. With the right sides of your work together, pin the knitted fabric together with the edges even. The seam should be sewn one full stitch from the end of the row. One stitch should be worked over every row. Thread the yarn needle. Insert the needle through both layers and sew two stitches to the left then one stitch back to the right. Keep stitches at an even distance. Continue working from right to left in this circular motion. (Diagram 1)

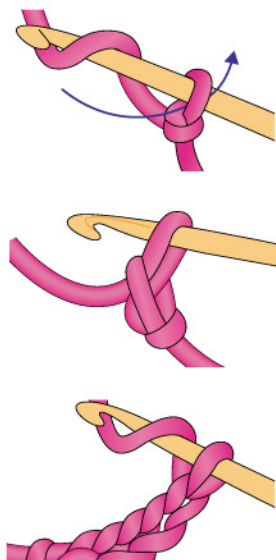
TASSELS

Cut yarn twice the length of your desired tassel plus a bit extra for the knot. According to the desired thickness of the tassel, select a number of lengths of yarn. Fold the lengths of yarn in half over a crochet hook. On the wrong side, insert the crochet hook from the front to the back through the edge of the work. Grab the yarn and pull through and tighten. Trim the ends to the same length.

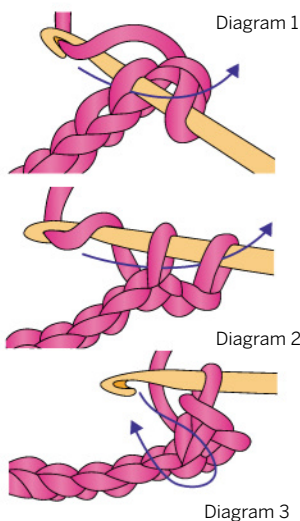
KNOTTED FRINGE

After working a tassel, take one half of the strands from each tassel and knot them with half the strands from the neighbouring tassel. Trim.

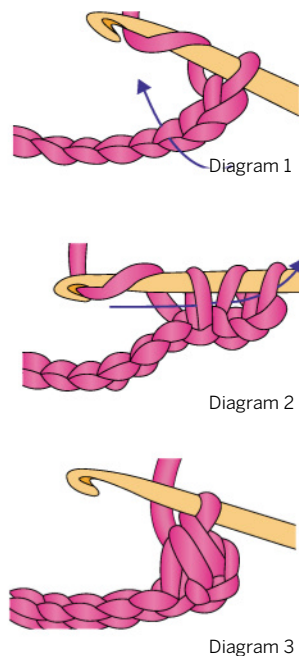


CROCHET CHAIN

Make a slip knot on your hook. Pass the yarn over the hook and catch it with the hook and draw it through the loop on the hook. Repeat, drawing yarn through the last loop formed.

DOUBLE CROCHET (DC) (US SINGLE CROCHET SC)

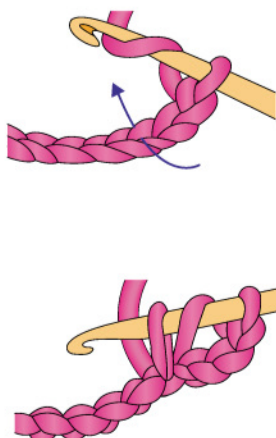
Insert the hook through the top two loops of a stitch. Pass the yarn over the hook and draw up a loop so that you have two loops on the hook (Diagram 1). Pass the yarn over the hook and draw through both loops on the hook (Diagram 2). Continue in the same way, inserting the hook into each stitch (Diagram 3).

HALF TREBLE CROCHET (HTR) (US HALF DOUBLE CROCHET HDC)

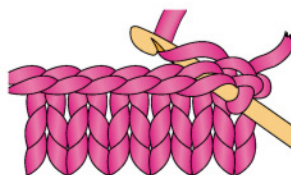
Pass the yarn over the hook. Insert the hook through the top two loops of a stitch (Diagram 1). Pass the yarn over the hook and draw up a loop so that there are three loops on the hook (Diagram 2). Draw through all three loops on the hook (Diagram 3).

TREBLE CROCHET (TR) (US DOUBLE CROCHET DC)

Diagram 1



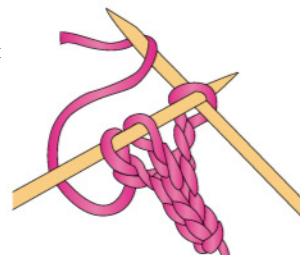
Pass the yarn over the hook. Insert the hook through the top two loops of a stitch (Diagram 1). Pass the yarn over the hook and draw up a loop so that you have three loops on the hook (Diagram 2). Pass the yarn over the hook and draw it through the first two loops on the hook, pass the yarn over the hook and draw through the remaining two loops. Continue in the same way, inserting the hook into each stitch (Diagram 3).

SLIP STITCH CROCHET (SL ST)

Insert your hook into the stitch. Yarn over the hook and draw the loop through the stitch and loop onto the hook.

I-CORD

With double-pointed needles, cast on the desired number of stitches. *Without turning the needle, slide the stitches to the other end of the needle, pull the yarn around the back and knit the stitches as usual. Repeat from * until your work measures the desired length

**PICKING UP DROPPED STITCHES**

A dropped stitch can be picked up using a crochet hook and don't be put off by stitches that have unraveled several rows down into the work. To pick up knit stitches, insert the crochet hook into the dropped stitch, draw through the bar lying above the dropped stitch and pull it through the loop of the dropped stitch.

KNITTING ABBREVIATIONS

Alt - Alternate; alternately	P2tog - Purl two stitches together
Beg - Begin; begins; beginning	Patt - pattern
CC - Contrasting colour	Psso - Pass slipped stitch over previous stitch
Ch - Chain	Pb - Purl through the back of the stitch
Cm - Centimetre/s	Pwise - Purlwise
CO - Cast on	Rem - Remaining
Cont - Continue; continuing	Rep - Repeat
Dec - Decrease; decreasing	Sl 1 - Slip one stitch across from left needle to right needle without knitting it.
Dk - Double Knitting	Sl 1 Purlwise - Slip next stitch off left needle onto right as if to purl the stitch.
Foll - Follow; follows; following	Sts - Stitches
G st - Garter stitch. If knitting back and forth, knit every row. If knitting circularly, one round knit, next round purl.	St st - Stocking stitch. If knitting back and forth, one row knit, next row purl. If knitting circularly, knit each round.
Inc - Increase; increasing	SSK - Slip, slip knit. Makes a left slanting decrease. Slip two stitches knitwise, on at a time from the left to the right needle, then knit them together through their backs.
Incl - Including	Tog - Together
K - Knit	WS - Wrong side
K1 - Knit one stitch	Ybk - Yarn back
K2tog - Knit two stitches together	Y fwd - Yarn forward - bring yarn under the needle, then over to the knitting position again, creating a new stitch.
Kb - Knit through the back of the stitch	Yo - Yarn over.
Kwise - Knitwise	
M - Make one stitch	
MC - Main colour. When two or more colours are used, the main colour is the yarn that is dominant.	
P - Purl	
P1 - Purl one stitch	

CROCHET TERMS & ABBREVIATIONS

approx	approximately		together or skipping the stitches.
beg	begin(ning)		
CC	contrast colour	foll	follow(s)(ing)
ch	chain(s)	gm	grams
cm	centimetre(s)	htr	half treble crochet (US half double crochet hdc)
cont	continue(ing)		
dc	double crochet (US single crochet sc)	inc	increase(ing). Add stitches in a row by working in extra stitches into a chain or between the stitches.
dec	decrease(ing). Reduce the stitches in a row by either working the stitches		

CROCHET TERMS & ABBREVIATIONS CONTINUED ...

LH	left-hand	sl st	slip stitch
lp(s)	loop(s)	sp(s)	space(s)
m	metre(s)	st(s)	stitch(es)
MC	main colour	t-ch	turning chain
mm	millimetre	tog	together
oz	ounces	tr	treble (US dc)
pat(s)	pattern(s)	WS	wrong side
pm	place markers. Place or attach a loop of contrast yarn or a stitch marker as indicated.		work even/work straight. Continue in the pattern without increasing or decreasing yards
rem	remaining	yd	yards
rep	repeat	yo	yarn over. Wrap the yarn around the hook
rnd(s)	round(s)	*	repeat the directions following * as many times as indicated
RH	right-hand		
RS	right side		
sk	skip, miss		

CROCHET HOOKS

METRIC	US
.60mm	14 steel
.75mm	12 steel
1.00mm	10 steel
1.50mm	6 steel
1.75mm	5 steel
2.00mm	B/1
2.5mm	C/2
3.00mm	D/3
3.50mm	E/4
4.00mm	F/5
4.50mm	G/6
5.00mm	H/8
5.50mm	I/9
6.00mm	J/10
6.50mm	K
7.00mm	K/10.5
	P
	Q
	S

KNITTING NEEDLES

METRIC	UK	US
2mm	14	0
2.25mm	13	1
2.5mm		
2.75mm	12	2
3mm	11	
3.25mm	10	3
3.5mm		4
3.75mm	9	5
4mm	8	6
4.5mm	7	7
5mm	6	8
5.5mm	5	9
6mm	4	10
6.5mm	3	10.5
7mm	2	
7.5mm	1	
8mm	0	11
9mm	00	13
10mm	000	15

© Creative Knitting

All work in Creative Knitting is protected by copyright. A single pattern or chart may be reproduced for personal, nonprofit use. Patterns and charts may not be reproduced to sell or distribute to others. Patterns may not be reproduced on letterhead, with another designers name attached or on the internet. Patterns may not be reproduced for classes or groups without the express permission of the publisher. Items produced using patterns may not be sold with any name other than that of the pattern designer. Contact Woodlands Publishing Pty Ltd for further information on copyright.

Warm up for Winter with Naturally Handknit Yarns



BKHE I

New from Naturally !!!
"Heather DK" 100% Pure Wool
10 stunning shades, 10 great designs
 Ask at your nearest Naturally yarn stockist



BKHE I



BKHE I

HAND KNIT YARNS by
Naturally™
 IT'S PURE
 NEW ZEALAND

FREE PHONE
 (AU): 1800 150 542
 (NZ): 0800 738 998
www.NaturallyYarnsNZ.com

Wentworth Distributors NZ Ltd. proudly distributes:

AVAILABLE IN NEW ZEALAND FROM

WELLINGTON & WAIRARAPA

Thimbles & Threads, Upper Hutt, (04) 526 6513
 Knitting Pretty, Karori 6012, (04) 476 3278
 Dianna's Lotto, Paraparaumu Beach 5032, (04) 902 5455

COROMANDEL, BAY OF PLENTY & WAIKATO

Greerton Sewing & Craft Centre, Greerton, (07) 578 8368
 Daisy Hill Designs, Te Aroha, (07) 884 4597
 Allens Fabrics, Huntly, (07) 828 7219
 Woolen Mill, Rotorua 3010, (07) 357 1050
 Tauranga Knitting Centre, Tauranga, (07) 571 8892
 Quilters Patch, Cambridge, (07) 823 5878
 Quilt n Knit 2, Putaruru 3411, (07) 883 7673
 Bargain Wools Ltd, Mt Maunganui, (07) 575 4700
 The Glasshouse, Whitianga, (07) 866 481
 Jaynes Wool & Fabric, Whakatane, (07) 307 0081

TARANAKI & CENTRAL

In Stitches, Stratford, (06) 765 4164
 Dallisons, Waverley, (06) 346 5005

NORTHLAND, BAY OF ISLANDS & AUCKLAND

Hodgson's Sewing Centre 2006, Howick, (09) 534 7301
 Arrow Clothing, Kalkohe 0405, (09) 401 1332
 Michelle Ann, Pukekohe 1800, (09) 238 7693
 Twinset & Pearls, Warkworth, (09) 425 7246
 Exquisite Stitch (woolmart), Takapuna 0627, (09) 486 1392
 Shore Wools, Browns Bay, (09) 478 1975

HAWKES BAY, GISBORNE & PALMERSTON NORTH

Bernina Sewing Centre, Gisborne, (06) 867 3990
 Suzies Wool in Things, Napier 4110, (06) 843 6267
 Get Fleeced Wool Shop, Mahora, (06) 878 9083
 Maggie-May, Marton, (06) 327 7343

SOUTHLAND

Jumper Co, Gore 9710, 021 180 4261
 Barkers, Hornby 8004, (03) 349 7867
 Blackwells, Kaipoi 7644, (03) 327 8029
 Silken Spindles Ltd, Te Anau 9640, (03) 249 8552
 Cromwell Handcrafts & Babywear, Cromwell 9342, (03) 445 3077
 Hands Ashford NZ Ltd, Christchurch 8052, (03) 355 9099
 Rangiora Woolshop (woolmart), Rangiora, (03) 313 6062
 Richmond Fabrics (woolmart), Nelson 7040, (03) 544 2515

AVAILABLE IN AUSTRALIA FROM

NSW

Simply Stitches, Wagga Wagga 2650, (02) 69216722
 Two Friends, Leston 2705, (02) 69535804
 Mosman Needlecraft, Mosman 2088, (02) 99695105
 Wool 'N' Things, Ulladulla 2539, (02) 44552501
 Pins & Things, Boolaroo 2284, (02) 49586362
 Woolshed @ Manuka, Manuka 2603, (02) 62950061
 Classic Treasures, Mudgee 2850, (02) 63727626

SOUTH AUSTRALIA

The Yarnbarn, Rostrevor 5073, (08) 83659654

VICTORIA

Watsonia Wool Shop, Watsonia 3087, (03) 94323544
 Country Folk, Mansfield 3722, (03) 57752044
 Dromana Wool & Craft, Dromana 3936, (03) 59810564
 Windmills & Roses, Mt Eliza 3930, (03) 9787494
 Woollybutt Knitting, East Rosanna 3084, (03) 94583101
 Clegs, East Brunswick 3057, (03) 96547677
 Sassafras Wool Store, Sassafras 3787, (03) 97552510
 Knit 'N' Purl, Dandenong 3175, (03) 97933530

ACT

Stitch n Time, Phillip 2606, (02) 62828383

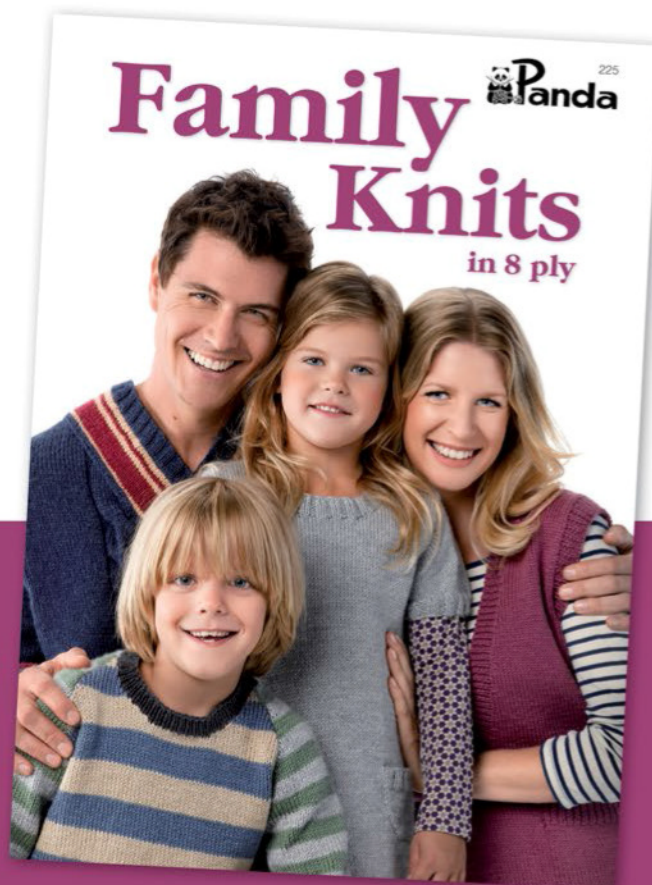
WESTERN AUSTRALIA

Gentle Era, Bridgetown 6255, (08) 97611490
 Crafters Croft, Augusta 6290, (08) 97581981
 Margaret River Wool Co, Margaret River 6285, (04) 08925590

TASMANIA

Tasmanian Wool Supplies, Moonah 7009, (03) 62781800





Family Knits in 8 ply.

Knitting something warm for your loved ones this winter is made easy with the Panda Family Knits in 8 ply. With 19 new designs you're sure to create something they'll love.

Available at all good knitting stores. Phone 1800 337 032 for your nearest stockist.

www.pandayarns.biz

Family Knits in 8 ply Book 225