

FUN Crochet MAGAZINE

- Christmas Cards
- Mandalas & Ornaments
- Christmas Tree Basket
- Glamour Headband
- Meet Angel Maggie
& More Inside!
- Christmas Gnome



Festive
shrug

Christmas Edition:

MAKE THE HOLIDAYS SHINE

Crochet!

LET'S GET STARTED

Crochet is super fun! But how do you actually make all these wonderful creations? We've listed all the basics and techniques just for you, so you can get started right away. Before you know it, you'll be hooked...

ABBREVIATIONS AND SYMBOLS

These are the most commonly used abbreviations and symbols:

Rnd 1	round 1, etc.
○ = ch	chain
X = sc	single crochet
● = sl st	slip stitch
MR	magic ring
next	next
dec	decrease
stm	stitch marker
inc	increase
tog	together
pcs	popcorn stitch
skip	skip
T = esc	extended single crochet
T = dc	double crochet
T = hdc	half double crochet
⊖ = cl	cluster
T = tr	treble crochet
T = dtr	double treble crochet
[]	work everything between the brackets into the same stitch
RS	right side
WS	wrong side
FL	front loop
BL	back loop
post stitch	post stitch
FPdc	Front Post double crochet
BPdc	Back Post double crochet
FPEdc	Front Post Extended double crochet

Stitches used

Would you like to learn more about the most commonly used stitches and techniques?

At aandehaak.nl/basis we explain how to do things like crochet a chain, single crochet, slip stitch or double crochet, but also how you can set up a magic ring and decrease and increase as you're working. The step-by-step instructions include drawings and videos to help you on your way. **Take a look at aandehaak.nl/basis.**

Note: videos are in Dutch.

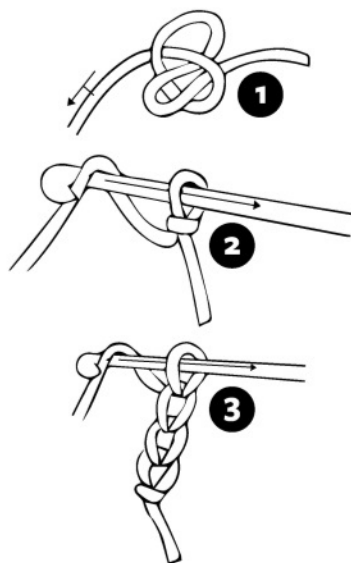


With instruction videos!

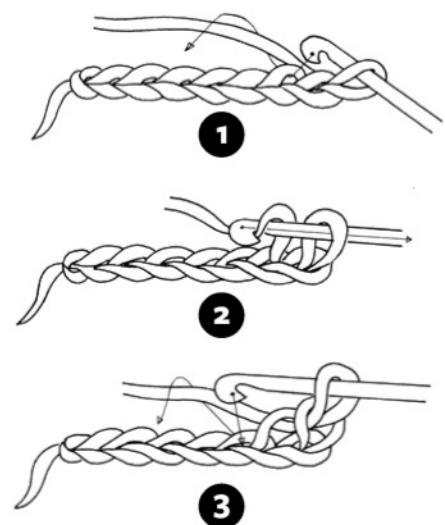
TIP! Scan the QR code



CHAIN (CH)



SLIP STITCH (SL ST)



FOLLOW FUN CROCHET MAGAZINE

Follow us on social media and share your thoughts on new projects, videos, sneak previews, and much more!

COLOPHON

Original title Aan de Haak **Translation** Mirjam Rap-Köpcke, Monique van Kerkvoorden-Loerakker
Publisher Ashja Bosboom-Fetvacıyan **Chief Editor** Marion Boeckhout **Coordination** Monique van Kerkvoorden-Loerakker **Photography and styling** Mirjam Vroegindewey **Contributors to this issue** Alie Walsweer, Kristina de Barse, Bérita van den Bedem, Annie Mathijssen, Marja Waalwijk, Monique van den Elzen, Marja Kasper **Company address** Fun Crochet Magazine, P.O. Box 38, 3800 AA Amersfoort, funcrochetmagazine@scalacrossmedia.nl, www.funcrochetmagazine.com **Design** Marco Lassing **ISSN** 2468-6492

© Copyright 2025. No part of this publication may be reproduced and/or made public by means of print, scan, photocopy, digital or any other means without written permission from the publisher. COPYRIGHT NOTICE © Fun Crochet Magazine All copyright and database rights are applicable to this issue and its contents. This copyright is held by Fun Crochet Magazine and/or the author concerned. All content is written with the utmost care and in accordance with safety guidelines. Carry out any projects at your own risk. Scala BV and/or its employees will not be held responsible. Fun Crochet Magazine will be archived and exploited in digital format. Fun Crochet Magazine content may also be published in other languages or in Fun Crochet Magazine specials and/or used in any of the publisher's media forms or those of third parties. All authors and contributors to articles and submitted letters and/or makers of photographic materials must be informed of and agree to any changes in accordance with the authors handbook and/or the purchasing conditions. These can be requested from the publisher.

We'd like to keep up to date with our readers. Let us know what you've created and show us by tagging **@FunCrochetMagazine** in your social posts!

Fun Crochet Magazine is a publication of
SCALA
PUBLISHING LIMITED



A SPARKLING Christmas

Welcome to our very merry **Christmas edition** of Fun Crochet Magazine! As the air turns crisp and the scent of pine fills the room, it's time to infuse every part of your holiday season with the warmth and charm of handmade crochet. This issue is a treasure trove of festive projects, perfect for decorating, gifting, and celebrating in style.

Why stick to ordinary ornaments when you can create something magical? Ditch the traditional balls for our colorful **mandalas for the Christmas tree** or make our **sparkling ornament** that truly comes alive under fairy lights. And no festive scene is complete without a new friend; the adorable **Christmas gnome**, complete with a glowing light, is ready to bravely join your holiday cheer!

For a touch of elegance, meet **Christmas Angel Maggie**, with her sweet dangling legs—perfect for guarding your presents or crowning your tree. Speaking of presents, our **basket by the Christmas tree** is a must-make to keep gifts tidy and add a fun, festive flair to your tree display. We've even included a gift for the littlest ones: the delightful **Christmas tree teething ring**.

Finally, step out in style! Our luxurious **shrug in diamond pattern** is the perfect eye-catcher to drape over a party dress, and our **glamour headband** adds a unique, festive touch to any outfit. And to truly make a statement, send a unique **crocheted Christmas card** this year!

Grab your glittery yarn and your hook—let the festive making begin!

Happy crocheting!

Ashja Bosboom-Fetvacıyan (publisher)
Marion Boeckhout (chief editor)
& Monique van Kerkvoorden-Loerakker (brand coordinator)



4 CHRISTMAS GNOME

7 CROCHETED CHRISTMAS CARDS

12 SHRUG IN DIAMOND PATTERN

17 SPARKLING ORNAMENT

20 MANDALAS FOR THE CHRISTMAS TREE


24 CHRISTMAS ANGEL MAGGIE

Contents IN THIS ISSUE

29 COWL SCARF AND HEADBAND

34 BASKET BY THE CHRISTMAS TREE

39 CHRISTMAS TREE TEETHING RING



Cheerful little fella

Christmas Gnome

Goblins are here to stay, for these little fellows known as gnomes or tomtes in the Far North, have become a beloved tradition. This tiny gnome bravely joins in the holiday cheer with his glowing light.

Tip!

Crochet an entire gnome tribe with lights for your windowsill!

What do you need

- Durable Coral yarn: 50 g. Tomato 328, White 245.
- Schachenmayr Catania yarn: 10 g. Skin tone 263,
- Scheepjes Panda yarn: 10 g. White
- Scheepjes Twinkle yarn: 10 g. Silver 940
- 2.5 and 4.5 mm Crochet hook
- Fiberfill stuffing
- Poly pellets (optional)
- LED tea light
- Darning needle
- Scissors

This is how you make it

The gnome will be about 17 cm.

Body and head

Rnd 1: make a MR with Tomato and work 6 sc into it (= 6).

Rnd 2: 2 sc in each sc (= 12).

Rnd 3: 6 x (1 sc, 1 inc) (= 18).

Rnd 4: 6 x (2 sc, 1 inc) (= 24).

Rnd 5: 6 x (3 sc, 1 inc) (= 30).

Rnd 6: 2 sc, 6 x (1 inc, 4 sc), 2 sc (= 36).

Rnd 7: 6 x (5 sc, 1 inc) (= 42).

Rnd 8: 3 sc, 6 x (1 inc, 6 sc), 3 sc (= 48).

Rnd 9: 6 x (7 sc, 1 inc) (= 54).

Rnd 10: 54 sc in the BL.

Rnds 11-32: 54 sc.

Rnd 33: 4 sc, 9 x (sc2tog) (= 45).

Rnd 34: 45 sc.

Rnd 35: 3 sc, 9 x (sc2tog) (= 36).

Rnd 36: 36 sc.

Rnd 37: 2 sc, 9 x (sc2tog) (= 27). Change to Skin tone.

Rnd 38: 27 sc.

Rnd 39: 9 x (2 sc, 1 inc) (= 36).

Rnd 40: 9 x (3 sc, 1 inc) (= 45).

Rnds 41-43: 45 sc.

Rnd 44: 9 x (3 sc, sc2tog) (= 36).

Rnd 45: 9 x (2 sc, sc2tog) (= 27).

Rnd 46: 9 x (1 sc, sc2tog) (= 18). Stuff the work.

Rnd 47: 9 x (sc2tog) (= 9).

Rnd 48: 4 x (sc2tog), 1 sc (= 5).

Cut the yarn and weave it through the loops, fasten off.

Crochet with Silver in the FL of Rnd 10 (= 54 sc).

Cut the yarn and fasten off.

Beard

Crochet 7 l with Scheepjes Panda and the 4,5 mm crochet hook.

Turn the work and crochet 6 sc (2 x).

From here, increase 1 sc at the beginning and end of each round. Rep until you have 14 sc. Crochet 2 more rounds.

Cut the yarn and sew the beard from one side to the other side at Rnd 6 of the skin tone.

Nose

Rnd 1: make a MR with Skin Tone and work 6 sc into it (= 6).

Rnd 2: 2 sc in each sc (= 12).

Rnds 3-5: 12 sc. Stuff the nose.

Rnd 6: 6 x (sc2tog) (= 6).

Cut the yarn and weave it through the loops. Stuff the nose lightly and sew it in the center of the beard at Rnd 2 of the skin tone.

Hat

With Tomato, crochet the hat in a spiral using FPdc and BPdc. Begin the round with 2 ch and end with 1 sl st in the 2nd ch of the 1 st 2 ch. Crochet 34 ch, join with 1 sl st.

Rnd 1: 2 ch, 33 dc, 1 sl st in the 2nd ch from the 1st 2 ch.

Rnd 2: rep (2 ch, 1 FPdc, 1 BPdc), end with 1 FPdc, 1 sl st in the 1st 2 ch.

Rep Rnd 2 another 7 x. Cut the yarn and fasten off.

Change to Silver and crochet 1 round of sc. Cut the yarn and fasten off.

Thread the yarn through the starting ch, pull tight and fasten off. Sew the hat above the nose onto the head. Decorate the hat with stars.

Arm (2 x)

Crochet 14 ch, join with 1 sl st to form a ring.

Continue working in the round.

Rnds 1-17: 14 sc. Cut the yarn and fasten off.

Rnd 18: change to Skin tone and attach in the BL, crochet 14 sc.

Rnds 19-21: 14 sc.

Rnd 22: 2 sc, sc2tog, 6 sc, sc2tog, 2 sc (= 12).

Rnd 23: 2 sc, sc2tog, 4 sc, sc2tog, 2 sc (= 10).

Cut the yarn and weave it through the loops. Fasten off.

Change to Silver. Crochet with Silver in the FL of Rnd 18 (= 14 sc).

Cut the yarn and fasten off. Stuff the hands and half of the arm lightly, do no stuff the upper part. Sew the arms to the sides of the body. »



Basket for candle

Rnd 1: make a MR with Silver and work 6 sc into it (= 6).

Rnd 2: 2 sc in each sc (= 12).

Rnd 3: 6 x (1 sc, 1 inc) (= 18).

Rnd 4: 6 x (2 sc, 1 inc) (= 24).

Rnd 5: 6 x (3 sc, 1 inc) (= 30).

Rnd 6: 30 sc in the BL.

Rnds 7-9: 30 sc.

Rnd 10: 30 sl st. Cut the yarn and fasten off. Thread the yarn through the loops and weave it in. Attach the basket between the hands and place a LED tea light in it.

Lid on the candle basket

Rnd 1: make a MR with Silver and work 6 sc into it (= 6).

Don't pull the MR too tight, but leave an opening so you can slide it over the flame of the tea light.

Rnd 2: 2 sc in each sc (= 12).

Rnd 3: 6 x (1 sc, 1 inc) (= 18).

Rnd 4: 6 x (2 sc, 1 inc) (= 24).

Rnd 5: 6 x (3 sc, 1 inc) (= 30).

Rnd 6: 30 sc in the BL.

Rnd 7: 30 sl st, join the round with 1 sl st.

Cut the yarn and fasten off. Insert the flame of the LED tea light through the hole and glue it in place if needed.

Star (11 x)

Make a MR with Silver and work 5 x (3 ch, 2 sl st on the ch, 1 sl st in the MR) into it. Fasten off and weave in the ends.

Sew the stars onto the body and the hat. ●

Designer: Kristina de Barse



Pattern

Be original

Crocheted Christmas Cards

Want everyone to know you love crocheting? Then send a crocheted Christmas card this year. A unique and special surprise among all the paper ones.

Tip!

If you crochet very loosely, use a smaller hook or make the card without a border. Otherwise, the crocheted card might not fit an A6-card.

What do you need

General

- 2 and 2.5 mm Crochet hook
- Scissors
- Darning needle
- Textile glue or double-sided tape
- A6 (folded) cardboard cards

Holly leaf card

- Scheepjes Catona yarn: Twinkle Red 924, Twinkle Green 930, Fir 525, Bridal White 105

Card stars

- Scheepjes Catona Yarn: Saffron 249, Scarlet 192, Bridal White 105, Twinkle Gold 941

Card Christmas tree

- Scheepjes Catona Yarn: Twinkle Red 924, Bridal White 105, Dark Olive 387, Twinkle Silver 940, Fir 525

This is how you make it

The crocheted cards measure approx. 9 x 13 cm without the border. Follow the **pattern** to make the cards, starting in the lower right-hand corner. After each round, turn with 1 tch, it does not count as a stitch. The odd-numbered rounds form the front and the even-numbered rounds form the back of the work. The pattern is made using the Intarsia technique. This means you crochet with multiple colors. Do not carry the unused yarn along, but fasten off or pick it up again when changing colors.

Color change

For a smooth transition to a new color, finish the last stitch of the "old" color with the new one. Make the final yarn-over with the new color **1 - 3**.

For both front and back color changes, leave the unused yarn at the back of the work. When changing colors at the front, lay the threads of yarn away from you. When changing colors at the back, lay the threads of yarn facing you. The back is slightly trickier, as there may be a strand of yarn running in front of the stitch you need to work into. After a color change, gently tighten the old color after making a stitch in the new color. Not too tight, but not too loose either **4**. This way, you pick up the strands of yarn as you go, so you don't need to fasten off too many strands. It's helpful to create a 2nd ball of yarn for some colors that are used at multiple places in the pattern. After each round, organize your yarn balls to avoid tangles.

Start of the Christmas tree and holly leaf pattern

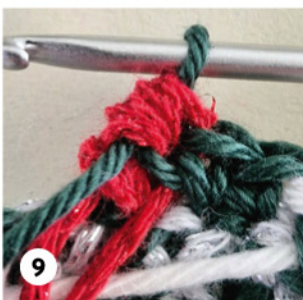
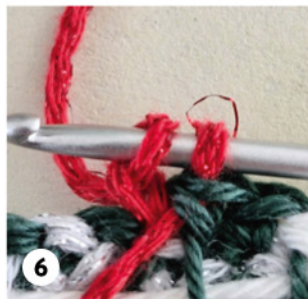
Using White and the 2.5 mm crochet hook, crochet 23 ch + 1 tch. Crochet 32 rounds of 23 sc. Follow the **pattern** chart for this. Crochet the indicated number of blocks in the given color, for example for the Christmas tree, **Rnd 2:** 10 sc in white, 3 sc in brown, 10 sc in white. Begin the Intarsia color work starting in Rnd 2 (= the back). Make sure the end of the new strand stays at the back of the work. >>



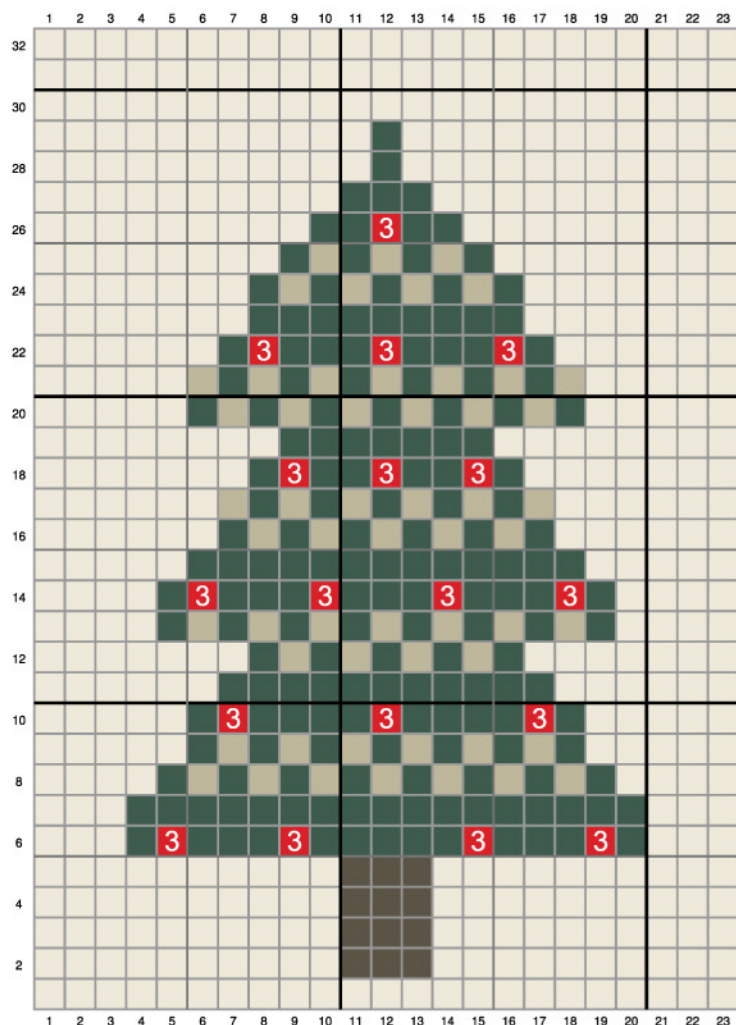
Christmas balls

Crochet the Christmas balls of the tree using the bobble stitch at the back of the work. Each bobble consists of 3 extended single crochet stitches worked together. This works as follows: make the color change as described to Twinkle Red. Insert into the next stitch, pull up a loop, yarn over, pull through only the 1st loop (= 2 loops on the hook). Leave them on the hook and work 2 more extended single crochet stitches in the same stitch. When you have 4 loops on the hook, pull the green yarn through all loops at once **5 - 10**.

>>



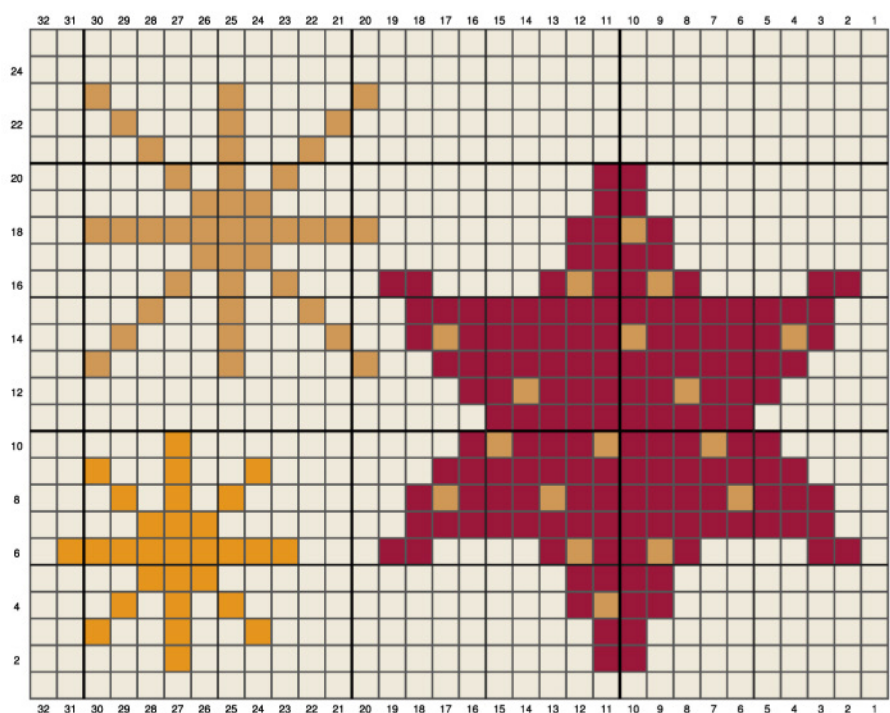
Christmas tree



- 3** Scheepjes Catona 924 Twinkle rood (Ro)
- Scheepjes Catona 105 - Bridal White (Wi)
- Scheepjes Catona 387 - Dark Olive (Br)
- Scheepjes Catona 940 Twinkle zilver (Zi)
- Scheepjes Catona 525 - Fir (Gr)



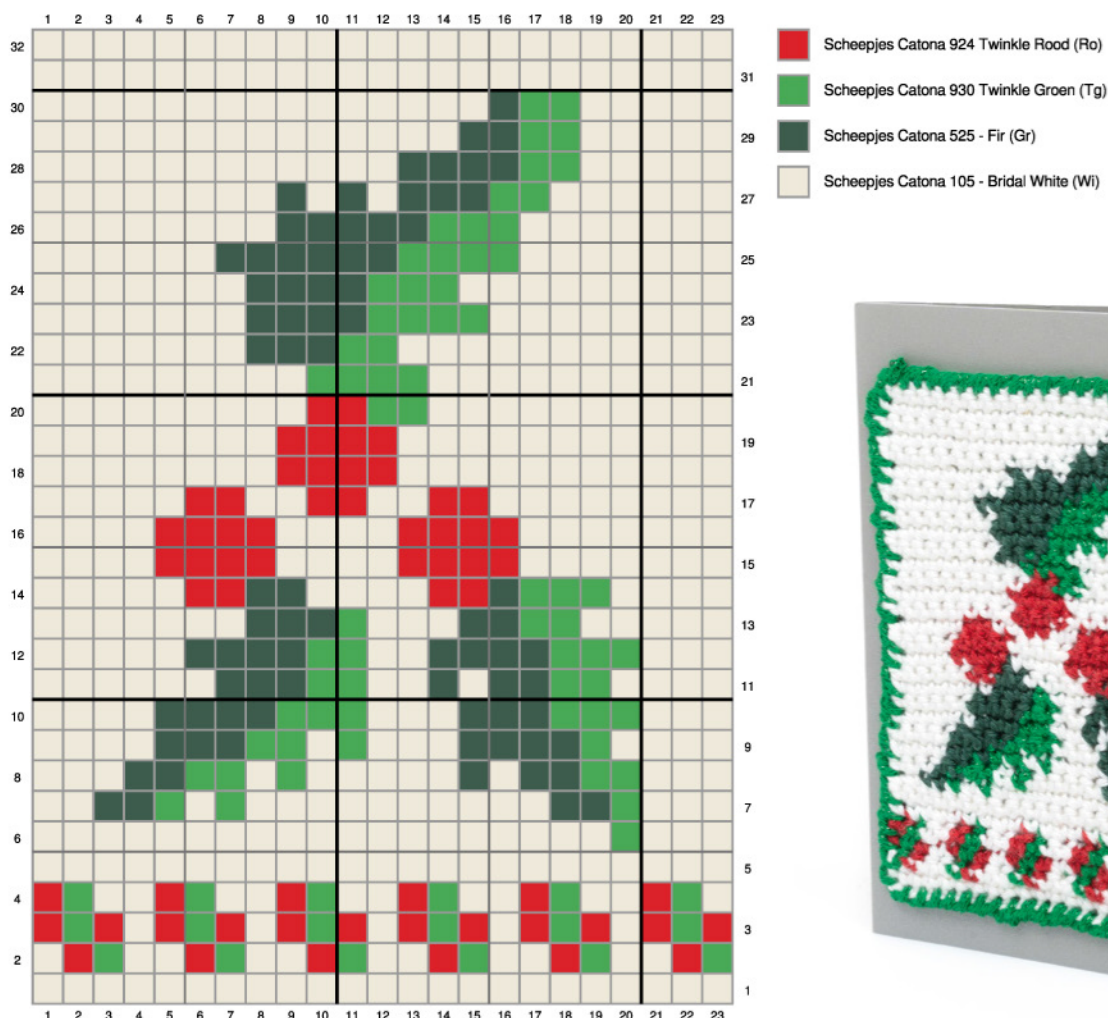
Stars



- Scheepjes Catona 249 - Saffron (Ge)
- Scheepjes Catona 192 - Scarlet (Dr)
- Scheepjes Twinkle 941 Goud (Go)
- Scheepjes Catona 105 - Bridal White (Wi)



Holly leaf



Start star pattern

Using White and the 2.5 mm crochet hook, crochet 32 ch + 1 tch. Crochet 25 rounds of 32 sc. Follow the **pattern** for this.

Finishing

Fasten off all yarn ends at the back. Pin the crocheted card neatly into shape, lightly moisten it, and let it dry. Then, using a 2 mm hook, crochet a border around the card with the lobster stitch. Glue the work onto the folded A6 card-board card.

Lobster stitch

Join with 1 ch and crochet sc from left to right **11** - **16**. Crochet lobster stitches into each single crochet at the top and bottom. To prevent the piece from becoming too wide along the sides, crochet 1 lobster stitch into each of the 1st 2 rounds on the sides. Then skip 1 Rnd and repeat this. Make 1 lobster stitch into each corner. •

Designer: Marja Kasper, @marjahaakt

Cool shoulder shrug

SHRUG IN DIAMOND PATTERN

A shrug is a combination of a short cardigan and a shawl and looks a bit like a bolero, but with its own twist. It's definitely an eye-catcher and drapes beautifully over your shoulders. It looks festive over a nice dress or layered on top of a blouse.

What do you need

- Schachenmayr Tuscany Tweed yarn:
4 balls of red 0036, 3 balls of green 0072,
2 balls of lime 0070, 1 ball of ecru 0005,
light green 0071, white 0002
- 4 mm crochet hook
- Blunt-tip needle
- Scissors

Schachenmayr Tuscany Tweed is available at specialized yarn stores. More info and designs on Schachenmayr.com

This is how you make it

The panel for the shrug will be 90 cm long and about 70 cm wide. If you like, make it longer by repeating the pattern 1 x, and make it wider by adding an extra pattern section. No matter how you make the panel, the stripes of the pattern will line up neatly on all sides. Crochet according to the **diagram**. You can crochet Rnd 4 of the pattern in reverse. This means that if you're supposed to crochet a return round, you can also crochet a forward round instead (see diagram). The pattern consists of 31 stitches and repeats continuously. »







TIP!

The sleeves of the shrug are 90 cm long and approximately 70 cm wide. If you like, you can make the sleeves longer by repeating the pattern one more time.

Gauge swatch

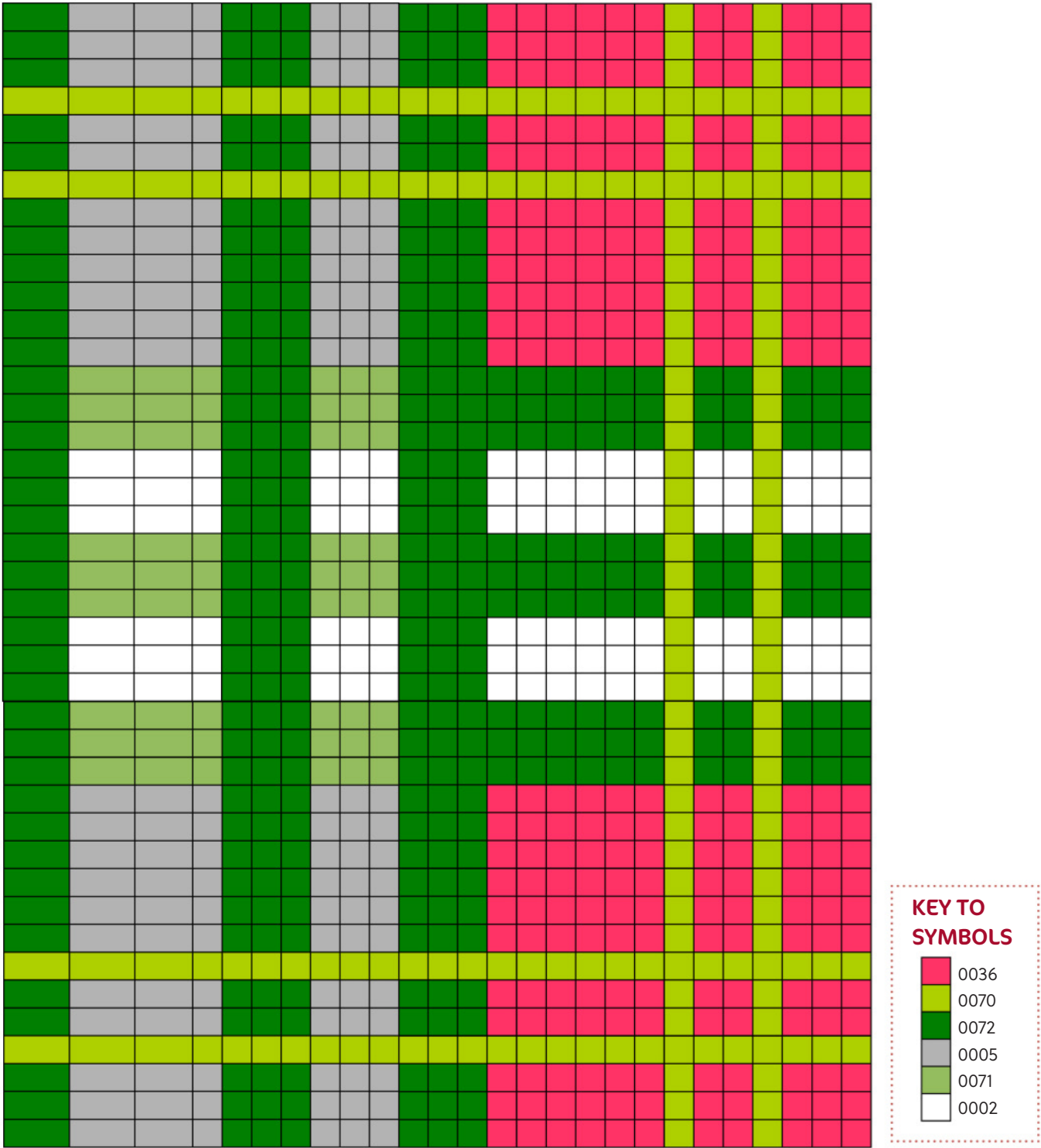
Crochet 21 rounds with 18 sc = 10 x 10 cm.
Prepare small balls in advance. 6 x red, 5 x green, 5 x lime, 5 x ecru. If you always turn the same way while crocheting, you'll avoid having the yarn balls get tangled.

Shrug

Make a chain of 158 ch (= 157 sc: 155 for the pattern and 2 edge stitches). Crochet as follows: (2 lime, 2 red, 1 lime, 6 red, 3 green, 3 ecru, 3 green, 3 ecru, 3 green, 6 red). Rep this, but now 1 lime instead of 2. Continue crocheting according to the diagram and make the pattern 4 x. Fasten off and weave in the ends. »



Diagram





Finishing

Fold the panel in half and sew them about 13 cm closed at both sides. Crochet 5 rounds of sc around the ends for the cuffs using red or any color you like. Fasten off.

Cuffs

Make a chain of 26 ch and crochet a cuff of 25 sc up to a height of about 32 cm **1**. Crochet this 2 x. Divide the cuff into four sections and do the same with the shrug **2** and **3**. Divide the space evenly and crochet the cuff onto the shrug **4** t/m **6**. •

Designer: Bérta van den Bedem

Very festive

Sparkling ORNAMENT

This ornament looks extra festive thanks to the glittery yarn. It really shines when candles or fairy lights are lit, perfect for setting the Christmas mood.

Tip!

Try different beads colors to give it a whole new look.



What do you need

- Party yarn (with metal thread):
1 ball of Gold colored yarn
- 3 mm crochet hook
- Wooden beads: 4 x round 1 cm Ø,
3 x faceted 2.5 cm Ø
- Tapestry needle
- Fiberfill Stuffing
- Scissors

TIP!

For extra shine,
choose yarn with
a bit of sparkle.

This is how you make it

The ornament will be about 30 cm tall. The hanging loop and the tassel are both approximately 8 cm long. The 1 ch at the beginning of the round does not count as a stitch.

Ornament

Rnd 1: 21 ch, start in the 2nd ch from the hook and crochet 20 sc (= 20).

Rnds 2-5: 1 ch, turn, 20 sc (= 20).

Rnd 6: 1 ch, turn, 5 sc (= 5).

Rnds 7-18: 1 ch, turn, 5 sc (= 5). Fasten off.

You have now crocheted the base and 1 upright leg.

Now crochet the other leg and the top section:

Rnd 7: insert in the 5th stitch to make the corner at the other side of the base that you just crocheted, 1 ch, 5 sc (= 5).

Rnds 8-18: 1 ch, turn, 5 sc (= 5). At Rnd 18, crochet 10 ch, then continue on the other leg, 5 sc (= 10 sc, 10 ch).

Rnd 19: 1 ch, turn, 20 sc (= 20), 5 sc on each of the 2 legs and 10 sc on the chain **1**.

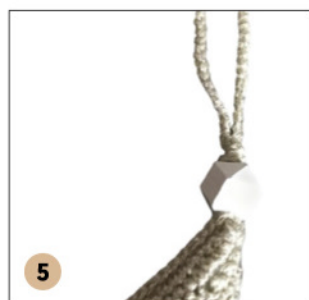
Rnds 20-23: 1 ch, turn, 20 sc (= 20). Crochet 1 round of sc evenly around the entire square, making 3 sc in each corner. Fasten off.

Crochet 1 round of sc along the inside of the square, working 2 sc together in each corner. Fasten off **2**.

Finishing

Fold the square in half **3**. Join yarn at the top point of the triangle, crochet 60 ch, then join with 1 sl st in the stitch where you began the chain. Crochet sc through both layers around the outside of the triangle, up to the other point.

Stuff lightly as you go. Crochet 40 ch, join with 1 sl st in the stitch where you began the chain **4**. Crochet sc through both layers at the inside of the triangle. Thread the doubled 60-chain cord through a bead and tie a knot above the bead **5**. Thread the doubled 40-chain cord through 2 beads. Wrap the yarn 25 times around the short side of a mobile phone or other object. Cut 1 side open. Pull the





bundle of yarn through the 40-chain cord and fold the strands downward **6**. Tie a piece of yarn 1 cm from the top to secure the tassel **7**. Slide 1 bead down toward the tassel and 1 bead up toward the tip of the hanger **8**. Crochet 12 ch, leaving a long tail. Sew one side securely to the inside bottom of the triangle. String 4 beads onto the cord and sew the other end of the cord securely in place **9**. •

Designer: Marja Waalwijk, tjeempie.com



Mandalas

for the Christmas Tree

Tired of your Christmas balls? Try something different and hang these colorful mandalas in your tree. They also look beautiful in front of a window or hanging from a branch.

What do you need

Mandala with bells

- Scheepjes Maxi Sweet Treat yarn: cream 505, moss green 212
- 3 mm Crochet hook
- Metal ring Ø 7 cm
- 2 Bells



This is how you make it

Join each round with 1 sl st.

The 1st part of each round is described. Rep this until the end of each round.

Mandalas with bells and star charm

Make a MR with moss green.

Rnd 1: 16 dc in MR.

Rnd 2: 2 dc in 1 dc (= 32).

Rnd 3: 1 sc in 1 dc, 5 ch, skip 3 dc, 1 sc in next dc.

Change to cream.

Rnd 4: 1 dc, 1 ch, 1 dc in the sc, 3 ch, 1 sc in the center ch, 3 ch.

Rnd 5: 2 dc, 2 ch, 2 dc in the ch, 2 ch, 1 bobble of 3 dc in the sc, 2 ch. Change to moss green.

Rnd 6: crochet this round around the ring. 2 x 1 sc in 1 dc, 3 sc around the 2 ch, 2 x 1 sc in 1 dc, 3 sc around the 2 ch, 1 sc on the bobble, 3 sc around the 2 ch.

Rnd 7: 1 sc in 1 sc, 2 ch, skip 2 sc, 1 sc in the next sc. Also crochet a loop of 18 ch. Fasten off.

Crochet a chain of 200 ch with cream. Thread this through the arches, making sure the ends stay the same length.

Thread the bells onto the ends and make two loops.

Tie together with the charm.

»



What do you need

Mandala with rose

- Scheepjes Sweet Treat yarn: moss green 212
- Scheepjes Twinkle: red 924, silver 940
- 2.5 mm crochet hook
- Metal ring Ø 7 cm
- Cream cotton cord
- Charm Christmas tree
- Needle
- Scissors

Mandala with rose

Rose

Make a MR with silver.

Rnd 1: 6 sc in the MR (= 6).

Rnd 2: 2 sc in 1 sc (= 12). Change to red.

Rnd 3: 1 sc in 1 sc, 2 sc in 1 sc (= 18).

Rnd 4: 1 sl st at the back of the sc of Rnd 2, 3 ch, skip 1 sc, 1 sl st in the next sc (= 6 arches).

Rnd 5: 1 sc, 1 hdc, 1 dc, 1 hdc, 1 sc in each arch. Fasten off.

Rnd 6: using red again, start with 1 sl st at the back of the dc of Rnd 5 Crochet 4 ch, 1 sl st in the next dc.

Rnd 7: 1 sc, 1 hdc, 1 dc, 1 tr, 1 sc, 1 hdc, 1 sc in each arch. Fasten off. Make another rose.

Mandala

Place the roses with the backs facing each other and crochet with moss green Sweet Treat.

Rnd 1: 1 sl st at the inside of Rnd 7 of the rose, 6 ch, repeat.

Rnd 2: 1 dc, 3 ch, 1 dc in the sl st, 4 ch, 1 sc in the arch, 4 ch.

Rnd 3: 1 dc, 3 ch, 1 dc in the sc, 4 ch, 1 sc in the 3 ch, 4 ch.

Rnd 4: 6 sc around the arch of 4 ch, 1 sc on the sc, 6 sc around the arch, 1 sc in 1 dc, 4 sc around the 3-ch arch, 1 sc in 1 dc and crochet this entire round around the ring. Also join a chain of 18 ch. Fasten off.

Feather

This feather is not crocheted but knotted. Pull a 22 cm length of cream cotton cord through the ring. Cut 30 strands of yarn of 13 cm. Knot them around the cord using a square knot. Note: alternate the direction so it stays nice and straight. Place one strand under on the left, the other over on the right. Pull the strands through and pull tightly. For the next knot, place right under and left over. Finally, attach a Christmas tree charm at the bottom and tie it securely. Fray the strands with a needle. Trim the feather into shape.



What do you need

Mandala with green feather

- Scheepjes Maxi Sweet Treat yarn: cream 505, moss green 212
- Feathers
- 1.5 mm Crochet hook
- Metal ring Ø 7 cm
- 5 Bronze beads
- Cream cotton cord
- Needle
- Pliers
- Cord end clamp



Mandala with green feather

Make a MR with cream.

Rnd 1: 6 sc in the MR.

Rnd 2: 2 sc in 1 sc (= 12).

Rnd 3: 1 dc in 1 sc, 1 dc, 2 ch, 1 dc in the next sc. Change to moss green.

Rnd 4: 3 sc in the 2 ch, 3 x (1 sc in 1 dc) (= 36 sc).

Rnd 5: 1 sc in 1 sc, 3 ch, skip 2 sc, 1 sc in the next sc.

Rnd 6: 1 sc, 1 hdc in the arch, 1 dc in the sc of Rnd 4, 1 hdc, 1 sc in the same arch, rep in each arch. Change to Cream.

Rnd 7: 1 sc in 1 sc, 1 sc in the hdc, 2 sc in the dc, 1 sc in the hdc, 1 sc in the sc.

Rnd 8: sl st to the sc on the dc. Crochet 2 x 1 dc in 1 sc, 5 ch. Change to moss green.

Rnd 9: 2 x 1 sc in 1 dc and around the ring, 6 sc around the ring. Also join a chain of 18 ch. Fasten off.

Feather and cord

Take 1 or 2 feathers and secure the ends inside the cord end clamp. Close it with small pliers. Thread 2 beads onto the cream yarn and onto the feather. Crochet 6 ch, pull the feather upward and make 11 ch. Pull the loop through the bead and crochet 10 ch, take the next bead and crochet 12 ch. Pull the loop through the 1st bead again and crochet 1 sc above it. Fasten off. For the second cord, cut a length of 44 cm. Pull it through between the 2 dc of the mandala. Thread 2 beads on and tie them using a square knot. Tie another bead underneath and secure with a knot. Separate the yarn ends a little. Sew the whole piece to the ring with sc.

Tip!

For the Christmas tree you can also leave out the loop at the top, instead use a metal ornament hook for hanging.



What do you need

Mandala tassel

- Scheepjes Maxi Sweet Treat yarn: cream 505, moss green 212
- 1.5 mm Crochet hook
- Charm Christmas tree
- Brown cotton cord
- Metal ring Ø 7 cm

Mandala with tassel

Make a MR with cream.

Rnd 1: 13 sc in the MR.

Rnd 2: 12 x 2 sc in 1 sc, 1 x 1 sc in 1 sc (= 25 sc).

Rnd 3: 4 x 1 dc in 1 sc, 3 ch, skip 1 sc. Change to green.

Rnd 4: 2 sc in 1 dc, 2 x 1 sc in 1 dc, 2 sc in 1 dc (= 6 sc), 2 ch, 1 sc around the 3 ch, 2 ch.

Rnd 5: 2 dc in 1 sc, 4 x 1 dc in 1 sc, 2 dc in 1 sc (= 8 dc), 4 ch. Switch to cream.

Rnd 6: sc2tog, 4 x 1 sc in 1 dc, sc2tog (= 6 sc), 3 ch, 1 sc in the arch, 3 ch.

Rnd 7: 1 sc in 1 sc, 1 hdc in 1 sc, 2 x 1 dc in 1 sc, 1 hdc in 1 sc, 1 sc in 1 sc, 1 sc in the arch, 5 ch, 1 sc in the next arch. Change to moss green.

Rnd 8: sl st upwards and crochet 1 sc between the dc and around the ring, 15 sc around the ring, 1 sc in the arch and around the ring, 15 sc around the arch.

Rep and join a chain of 18 ch. Fasten off. Cut 9 strands of brown cotton cord of 18 cm, and 1 of 22 cm. Fold the strands in half and hang the charm on the long strand. Twist that strand a few times at the top and tie securely. Separate the strands and trim neatly. Secure the top of the tassel with a piece of wire or yarn. ●

Designer: Annie Mathijsen

Adorable with dangling legs

Christmas Angel

Maggie

With her cute little dangling legs, Christmas angel Maggie is sure to steal your heart. Give her a lovely spot to sit or hang her at the top of the Christmas tree so she can watch over everything. Also fun to crochet several angels and place them among the presents.

What do you need

- Schachenmayr Catania yarn: 7 g. Ivory 00436, 11 g. Vintage 00423 (pink), 4 g. White 00106, 10 g. Maroon 00517 (brown), 7 g. Turquoise 00397 (light blue)
- Schachenmayr Catania yarn: 7 g. Unicorn 00231 (colored)
- Schachenmayr Lenja Soft Baby Smiles yarn: 5 g. White 01001
- Anchor metallic fine yarn: 3 g. Silver
- 2.5 mm Crochet hook
- Safety eyes, Ø 6 mm
- Skewer
- Stitch marker or colored yarn
- Fiberfill stuffing
- Pins
- Clear glue
- Red blush
- Scissors
- Darning needle

Schachenmayr Catania, Catania Color and Lenja Soft are available at specialized yarn stores. More info and designs on Schachenmayr.com

This is how you make it

The little angel will be 27 cm tall and 20 cm when seated.

Head and body

Rnd 1: make a MR with Ivory and work 6 sc into it (= 6).

Rnd 2: 2 sc in each sc (= 12).

Rnd 3: 2 sc in every 2nd sc (= 18).

Rnd 4: 2 sc in every 3rd sc (= 24).

Rnd 5: 2 sc in every 4th sc (= 30).

Rnd 6: 2 sc in every 5th sc. (= 36).

Rnds 7-11: 36 sc.

Rnd 12: every 5th and 6th sc2tog (= 30).

Rnd 13: every 4th and 5th sc2tog (= 24). Place the eyes between Rnd 8 and Rnd 9, with a space of 2 sc in between.

Rnd 14: every 3rd and 4th sc2tog (= 18). Stuff the head.

Rnd 15: every 2nd and 3rd sc2tog (= 12).

Rnds 16-17: 12 sc.

Rnd 18: change to Vintage: 2 sc in every 2nd sc (= 18).

Rnd 19: 2 sc in every 3rd sc (= 24).

Rnd 20: 2 sc in every 4th sc (= 30).

Rnd 21: 2 sc in every 5th sc (= 36).

Rnds 22-23: 36 sc.

Rnd 24: 2 sc in every 6th sc (= 42). Firmly stuff the neck.

Rnds 25-31: 42 sc.

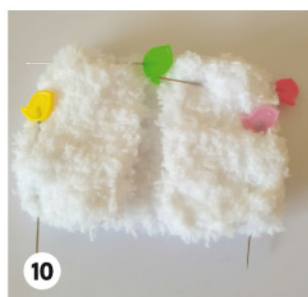
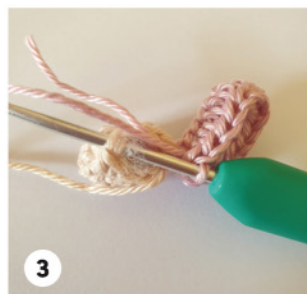
Rnd 32: 42 sc in the BL.

Rnd 33: every 6th and 7th sc2tog (= 36).

Rnd 34: every 5th and 6th sc2tog (= 30).

»





Rnd 35: every 4th and 5th sc2tog (= 24). Start stuffing and continue until you reach the end.

Rnd 36: every 3rd and 4th sc2tog (= 18).

Rnd 37: every 2nd and 3rd sc2tog (= 12).

Rnd 38: sc2tog all around (= 6).

Weave the yarn through the 6 stitches and pull tightly.

Fasten off and weave in the end.

Embroider a nose with 2 threads of yarn under the eyes across 2 sc **1**.

Arm (2 x)

Rnd 1: make a MR with Ivory and work 6 sc into it (= 6).

Rnd 2: 2 sc in every 2nd sc (= 9).

Rnd 3: 9 sc. Stuff the hand.

Rnd 4: every 2nd and 3rd sc2tog (= 6).

Rnd 5: change to Vintage, but leave a long Ivory tail **2**.

Make 16 ch, crochet 14 hdc back from the 3rd ch from the hook. Fasten off with 1 sl st at the other side of the hand **3**.

Weave in the Vintage end. Pull the Ivory strand through the 6 stitches of the arm and tighten. Fasten off and weave in the end. Pin the arms to the sides of the body in Rnd 19 and sew them in place **4**.

Leg (2 x)

Rnd 1: make a MR with Ivory and work 6 sc into it (= 6).

Rnd 2: 2 sc in every 2nd sc (= 9).

Rnds 3-4: 9 sc. Stuff the foot.

Rnd 5: every 2nd and 3rd sc2tog (= 6).

Rnd 6: change to Vintage, but leave a long Ivory tail. Make 22 ch, crochet 20 hdc back from the 3rd ch from the hook. Fasten off with 1 sl st at the other side of the foot. Weave in the Vintage end. Pull the Ivory strand through the 6 stitches of the foot and tighten. Fasten off and weave in the end. Pin the legs to the sides of the body at the front in Rnd 37 and sew them in place **5**.

Skirt

Attach Silver and White in the FL of Rnd 32 of the body **6**.

Rnd 1: 1 sc in every FL (= 42).

Rnd 2: 2 sc in every 7th sc (= 48).

Rnds 3-5: 48 sc.

Rnd 6: 16 x (5 sc in 1 sc, skip 1 sc, 1 sl st (= 96). Fasten off and weave in the ends.

Hair

Rnd 1: make a MR with Maroon and work 6 sc into it (= 6).

Rnd 2: in the BL: 2 sc in each sc (= 12).

Rnd 3: 2 sc in every 2nd sc (= 18).

Rnd 4: in the BL: 2 sc in every 3rd sc (= 24).

Rnd 5: 2 sc in every 4th sc (= 30).

Rnd 6: 30 sc in the BL.

Rnd 7: 30 sc.

Rnd 8: 30 sc in the BL.

Rnd 9: 2 sc in every 5th sc (= 36).

Rnd 10: 36 sc in the BL.

Rnd 11: 36 sc. Fasten off with 1 sl st. Leave a long tail.

Rnd 12: attach Maroon in the BL of Rnd 2, crochet 1 sc in every BL, 5 ch **7**. Continue crocheting in a spiral in BL of Rnd 4, Rnd 6, Rnd 8 and Rnd 10 **8**. Fasten off with 1 sl st and weave in the end. Pin the hair on top of the head and secure it. Weave in the end **9**. Roll the hair downward.

Jacket

Back panel

Rnd 1: make 22 ch with Lenja Soft White, crochet 20 dc back from the 3rd ch from the hook.

Rnds 2-7: 2 tch, 20 dc. Fasten off and weave in the ends.

Front panel (2 x)

Rnd 1: make 10 ch with Lenja soft white, crochet 8 dc back from the 3rd ch from the hook.

Rnds 2-7: 2 tch, 8 dc. Fasten off and weave in the ends.

Pin the front panels to the back panel **10**. Sew 3 rounds together along the bottom/side. Sew 3 sc together at the shoulders. Put the jacket on.

Wing (2 x)

Rnd 1: make a MR with Turquoise and work 6 sc into it (= 6).

Rnd 2: 2 sc in every 2nd sc (= 9).

Rnd 3: 2 sc in every 3rd sc (= 12).

Rnd 4: 2 sc in every 2nd sc (= 18).

Rnds 5-10: 18 sc.

Rnd 11: crochet the work in half with 1 ch, 1 hdc, 5 dc in 1 sc, skip 1 sc, 1 sc, 1 hdc, 5 dc in 1 sc, skip 1 sc, 1 sc. Fasten off and weave in the end.

Pin the wings to the center back of the jacket, spaced 2 dc apart **11**. Sew them only at the tip of Rnd 1 and Rnd 2, using Lenja Soft White.

»



Hat

Rnd 1: make a MR with Unicorn and work 6 sc into it (= 6).

Rnds 2-5: 6 sc.

Rnd 6: 2 sc in every 2nd sc (= 9).

Rnds 7-10: 9 sc.

Rnd 11: 2 sc in every 3rd sc (= 12).

Rnds 12-14: 12 sc.

Rnd 15: 2 sc in every 4th sc (= 15).

Rnds 16-19: 15 sc.

Rnd 20: 2 sc in every 5th sc (= 18).

Rnds 21-24: 18 sc.

Rnd 25: 2 sc in every 3rd sc (= 24).

Rnds 26-29: 24 sc.

Rnd 30: 2 sc in every 4th sc (= 30).

Rnd 31: 2 sc in every 5th sc (= 36).

Rnd 32: 2 sc in every 6th sc (= 42).

Rnd 33: 2 sc in every 7th sc (= 48).

Rnd 34: change to Lenja Soft White. Crochet 48 sc.

Fasten off and weave in the ends.

Glue the hat to the hair.

Heart small (4 x)

Crochet 1 heart with Turquoise and Silver, and 3 with only Silver. Make a MR with Turquoise and crochet 3 ch, 3 dc, 3 hdc, 1 ch, 1 dc, 1 ch, 3 hdc, 3 dc, 3 ch into it. Fasten off with 1 sl st, leaving a long tail. Hang the heart to the tip of the hat. Crochet 3 hearts in Silver in the same way. Fasten off and weave in the ends. Glue 1 Silver heart to the hat and glue the other hearts to the jacket.



Tip!

Crochet Christmas angel Maggie in the colors of your Christmas tree.

Little heart on magic wand

Crochet with Turquoise and Silver.

Rnd 1: make a MR with Turquoise and Silver and work 6 sc into it (= 6). Do not pull too tight, as the tip of the skewer needs to pass through here.

Rnd 2: 2 sc in every 2nd sc (= 9).

Rnd 3: 2 sc in every 3rd sc (= 12).

Rnds 4-7: 12 sc.

Fold the work in half, crochet it together with 1 ch, 1 sc, 5 dc in 1 sc, 1 sc, 5 dc in 1 sc, 1 sc. Fasten off and weave in the end. Cut a skewer at 10 cm. Put a bit of glue on the tip and push it through the MR in the heart. Also apply some glue to the skewer below the heart and wrap Lenja Soft White around it **12**. Glue the yarn securely at the bottom and make sure the skewer is no longer visible. With a few stitches, attach the right hand to the front center of the body in Rnd 27. Insert the magic wand through the arm.

Finishing

Put blush onto the cheeks with the red coloring pencil. •

Designer: Alie Walsweer, @bezigmeidje



COWL SCARF and headband

Got some scraps of crochet yarn at home? Use it to make this fun cowl scarf or headband. Or make both, of course!



Cowl scarf



Headband

What do you need?

- Scheepjes Merino Soft yarn:
1 ball of Melevich 600, Manet 627,
Lowry 604, Picasso 621, Michelangelo 603,
Constable 629, Hogarth 605
- 4 mm Crochet hook
- Blunt-tip needle
- Scissors
- Pins

Cowl scarf

With your preferred color, make a chain of 17 ch and crochet 18 rounds of 16 sc on this chain. Then crochet 1 round of sc all around with the same color. Make 10 squares this way. Join 5 squares together in one long row. Repeat this with the other 5 squares. Then join the squares underneath each other and close the side seam. Make sure that one seam faces the left side and the other seam faces the right side. **1** Fasten off and weave in the ends.







Headband

Crochet 5 squares as for the cowl scarf and join them together. For the loop, make a chain of 7 ch with a color of your choice and crochet 16 rounds of sc. Work 1 round of sc around the loop. Drape it over the headband and attach the loop with sc **2**. Adjust the number of squares to fit the head circumference or add elastic to make it fit properly.

Bérta van den Bedem

The headband consists of 5 blocks of ± 10 cm. The cowl scarf consists of 10 blocks of about 10 cm, two rows of 5 blocks.



TIP! You can find the pattern of the bomberjacket in Fun Crochet Magazine 23!

That looks cheerful

BASKET

by the Christmas Tree

*You don't want to leave the presents scattered under the tree?
Or are you looking for a beautiful basket to go around the tree?
Grab your crochet hooks and make this super fun basket:
your tree has never looked so festive!*

This is how you make it

The basket has a diameter of 40 cm and will be about 29 cm tall.

Basket

Rnd 1: make a MR with Forest Green and work 12 sc into it (= 12).
Rnd 2: 3 ch, rep (2 dc in each dc), join with 1 sl st in 1st dc (= 24).
Rnd 3: 3 ch, rep (1 dc, 2 dc in next dc), join with 1 sl st in 1st dc (= 36).
Rnd 4: 3 ch, rep (2 dc, 2 dc in each dc), join with 1 sl st in 1st dc (= 48).
Rnd 5: 3 ch, rep (3 dc, 2 dc in next dc), join with 1 sl st in 1st dc (= 60).
Rnd 6: 3 ch, rep (4 dc, 2 dc in next dc), join with 1 sl st in 1st dc (= 72).
Rnd 7: 3 ch, rep (5 dc, 2 dc in next dc), join with 1 sl st in 1st dc (= 84).
Rnd 8: 3 ch, rep (6 dc, 2 dc in next dc), join with 1 sl st in 1st dc (= 96).
Rnd 9: 3 ch, rep (7 dc, 2 dc in next dc), join with 1 sl st in 1st dc (= 108).
Rnd 10: 3 ch, rep (8 dc, 2 dc in next dc), join with 1 sl st in 1st dc (= 120).
Rnd 11: 3 ch, rep (9 dc, 2 dc in next dc), join with 1 sl st in 1st dc (= 132).
Rnd 12: 3 ch, rep (10 dc, 2 dc in next dc), join with 1 sl st in 1st dc (= 144).
Rnd 13: 3 ch, rep (11 dc, 2 dc in next dc), join with 1 sl st in 1st dc (= 156).
Rnd 14: 3 ch, rep (12 dc, 2 dc in next dc), join with 1 sl st in 1st dc (= 168).
Rnd 15: 1 ch, 1 sc in the BL of each stitch, join with 1 sl st in the BL of the 1st sc (= 168).
Rnd 16: 1 ch, 1 sc in every stitch, join with 1 sl st in 1st sc.
Rnds 17-24: 1 ch, 1 sc in every stitch, join with 1 sl st in 1st sc. Change to Cream.
Rnd 25: crochet this round with the lobster stitch. Fasten off and weave in the end.

Santa

Body and head

Rnd 1: using Red, crochet 16 ch, 1 sc in the 2nd ch, 1 sc in each ch, turn.
Rnd 2: no tch, 1 sc in the 2nd sc, 1 sc in each sc up to the final 2 sc, sc2tog, turn.
Rnd 3: 1 sc in each sc, turn.
Rnd 4: rep Rnd 2.
Rnd 5: fasten off and attach Pale Pink, crochet 1 ch, 1 sc in each sc, turn.
Rnd 6: 1 ch, 2 sc in the 1st sc, 1 sc in each sc up to the final 2 sc, sc2tog, turn.
Rnds 7-8: rep Rnd 5.
Rnds 9-11: 1 ch, 1 sc in each sc.
Rnd 12: no tch, sc2tog, 1 sc up to the final 2 sc, sc2tog, turn.
Rnd 13: rep Rnd 11. Fasten off and weave in the ends.

Hat

Rnd 1: using Red, crochet 3 ch, 1 sc in the 2nd ch from the hook, 2 sc in each ch, turn.
Rnd 2: 1 sc in each sc, turn.
Rnd 3: 1 ch, 2 sc in 1st sc, 2 sc, turn.
Rnd 4: no tch, 1 sc in each sc, turn.
Rnd 5: 1 ch, 2 sc in 1st sc, 3 sc, turn.
Rnd 6: 1 ch, 1 sc in each sc, turn.
Rnd 7: 1 ch, 2 sc in 1st sc, 4 sc, turn.
Rnd 8: no tch, skip 1 stitch, 4 sc, sc2tog, turn.
Rnd 9: no tch, skip 1 stitch, 4 sc, 2 sc in next sc, turn.
Rnd 10: no tch, skip 1 stitch, 5 sc, 2 sc in next sc, turn.
Rnd 11: no tch, skip 1 stitch, 4 sc, sc2tog, turn.
Rnd 12: no tch, skip 1 stitch, 3 sc, 2 sc in next sc, do not turn. Continue at the side **1**, 3 sc, turn.
Rnds 10-16: 1 ch, 3 sc, turn.
Rnd 17: no tch, skip 1 stitch, sc2tog, do not fasten off. Make 1 ch, crochet around with sl st and join with 1st sl st. Fasten off.

»

What do you need

- Durable Cosy Yarn: 5 balls of Forest Green 2150, 6 balls of Cream 2172, 2 balls of Ivory 326, 1 ball of Caramel 2210, Cayenne 2208, Pale Pink 2192, Red 316
 - Durable Cosy Fine Yarn: 1 ball of Black 325, scraps of Coral 2190, Baby Blue 214
 - 3 and 4.5 mm Crochet hook
 - Row counter
 - Darning needle
 - Scissors
- Yarn from DurableYarn.com





TIP!

Sew the pieces together using a split thread.

Mustache

The 3 ch at the beginning of each round do not count as a double crochet.

Rnd 1: crochet 3 ch with Ivory, 2 dc in the 3rd ch from the hook, turn.

Rnd 2: 3 ch, 1 dc in each dc, turn.

Rnds 3-12: rep Rnd 2.

Rnd 13: 3 ch, dc3tog. Fasten off and weave in the end.

Beard

Cut about 20 threads of 13 cm in Ivory. Tie them to each stitch above the body and gently comb them out **2 - 4**. Trim the beard into shape. Do the same to create the hair around the face.

Eye (2 x)

Rnd 1: crochet 6 ch with Black, 1 sc in the 2nd ch from the hook, 4 sc, continue at the other side of the chain, crochet 1 sc in next 5 ch (= 10).

Rnd 2: 1 ch, 1 sl st in each sc. Fasten off and weave in the end. Embroider pupils at the top of the eyes using Ivory and add accents around them with Baby Blue.

Cheek (2 x)

Rnd 1: crochet 4 ch with Coral, 2 sc in the 2nd ch from the hook, 1 sc, 2 sc in next ch, continue at the other side of the chain, crochet 2 sc in next ch, 1 sc in next stitch, 2 sc in next stitch. Join with 1 sl st and fasten off.

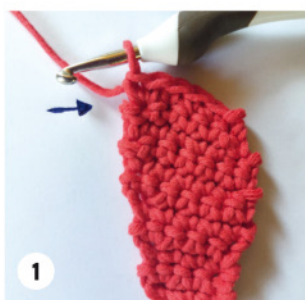
Nose

Make a MR with Red and work 6 dc into it. Close in the 1st dc and fasten off, leaving a long tail. Sew the nose onto the face.

Eyebrows (2 x)

Rnd 1: for the left eyebrow, crochet 7 ch with Ivory, 1 dc in the 3rd ch from the hook, 1 hdc in next 2 stitches, 1 sc, 1 sl st, fasten off.

Rnd 2: for the right eyebrow, crochet 6 ch, 1 sl st in the 2nd ch, 1 sc, 2 hdc, 2 dc in final ch. Fasten off and sew the eyebrows above the eyes.





Reindeer

Head

Rnd 1: crochet 9 ch with Caramel, 1 sc in the 2nd ch from the hook, 1 sc in each ch, turn, don't crochet a tch (= 8).

Rnd 2: sc2tog, 4 sc, sc2tog, turn (= 6).

Rnd 3: 1 ch, 2 sc in next sc, 4 sc, 2 sc in next sc, turn (= 8).

Rnd 4: 1 ch, 2 sc in next sc, 1 sc in each sc up to the final stitch, 2 sc in next sc, turn (= 10).

Rnd 5: 1 ch, 2 sc in next sc, 1 sc in each sc up to the final stitch, 2 sc in next sc, turn (= 12).

Rnd 6: 1 ch, 2 sc in next sc, 1 sc in each sc up to the final stitch, 2 sc in next sc, turn (= 14).

Rnds 7-12: 1 ch, 1 sc in each sc, turn.

Rnd 13: no tch, sc2tog, 10 sc, sc2tog, turn.

Rnd 14: no tch, sc2tog, 8 sc, sc2tog, turn.

Rnd 15: no tch, sc2tog, 6 sc, sc2tog, turn.

Rnds 16-20: 1 ch, 1 sc in each sc, turn.

Rnd 21: no tch, sc2tog, 4 sc, sc2tog, turn.

Rnd 22: no tch, sc2tog, 2 sc, sc2tog, do not turn.

Work sc all around and fasten off. Sew the head onto the basket.

Ear (2 x)

Crochet 11 ch with Caramel, 1 sc in the 2nd ch, 2 hdc, 3 dc, 2 hdc, 1 sc, 1 sl st, continue at the other side of the chain, 4 sl st, 2 sc, 4 sl st, join in 1st sl st, fasten off.

Accent ear

Crochet 10 ch with Cayenne, fasten off. Fold in half and sew onto the ear.

»





Tip!

*Instead of a gift basket,
you can also use the basket to
place a real or artificial Christmas tree in.
← For a real tree, always use a waterproof
flowerpot inside the basket with
the root ball in it.*

Eye (2 x)

Crochet 9 ch with Black, 2 sc in the 2nd ch, 6 sc, 2 sc in next ch, continue at the other side of the chain, 2 sc in next stitch, 6 sc, 2 sc in next stitch. Fasten off. Attach Baby Blue and crochet 6 sl st. Do not fasten off and attach White. Now crochet sl st around the eye. Fasten off and weave in the ends.

Nose

Make a MR with Red and work 2 hdc, 2 dc, 4 hdc, 2 dc, 2 hdc into it. Close in 1st hdc, fasten off.

MOUTH

With Black, make a chain with 12 ch, fasten off. Make a chain with 20 ch, fasten off. Attach the chain in the shape of the mouth. Fill the space with Black.

Tongue

Crochet 4 ch with Coral, fasten off. Sew the tongue onto the mouth.

Antlers

Crochet a foundation chain of 20 ch. For the first branch, crochet 1 sl st in the 3rd ch from the hook, 5 ch, return to the chain with 4 sl st, join with 1 sl st on the foundation chain. For the second branch, crochet 7 ch, 1 sl st in the 1st ch from the hook, 1 sl st in next 5 ch, make 3 sl st back on the foundation chain. For the third branch, crochet 12 ch, 1 sl st in next 3 ch, join with 2 sl st on the foundation chain. For the fourth branch, crochet 4 ch, work 3 sl st back along the chain, make 7 sl st along the foundation chain. For the fifth branch, crochet 5 ch, join with 1 sl st on the foundation chain, work 5 sl st on the foundation chain. Make the second antler in mirror image, starting from the other side of the 20-ch foundation chain. ●

Designer: Monique van den Elzen,
Wolengaren.com

Gift for the little ones

Christmas Tree TEETHING RING

Pattern

*Presents under the Christmas tree have slowly become a tradition.
 And the little ones aren't left out, for this teething ring will
 surely make them smile.*



What do you need

- Crochet cotton suitable for a 2.5 mm crochet hook: old green, scrap of brown.
- 2.5 mm crochet hook
- Tapestry needle
- Fiberfill stuffing
- Wooden teething ring
- Scissors



This is how you make it

Wind a small ball of yarn in old green, you'll need it later.
Edging stitch: Rep to the end (2 sc, 2 ch, 1 sl st in the sc).

Christmas tree (2 x)

Rnd 1: crochet 22 ch with old green. Start to crochet into the 2nd ch from the hook and work 21 sc into it (= 21).

Rnds 2-4: 1 ch, turn, 21 sc (= 21).

Rnd 5: 1 ch, turn, skip 1st stitch, 3 sc, 2 sc in the final stitch (= 5).

Rnd 6: 1 ch, turn, 5 sc (= 5).

Rnd 7: 1 ch, turn, skip 1st stitch, 3 sc, 2 sc in the final stitch (= 5).

Rnd 8: 1 ch, turn, 5 sc (= 5).

Rnd 9: 1 ch, turn, skip 1st stitch, 3 sc, 2 sc in the final stitch (= 5).

Rnd 10: 1 ch, turn, 5 sc (= 5).

Rnd 11: 1 ch, turn, skip 1st stitch, 3 sc, 2 sc in the final stitch (= 5).

Rnd 12: 1 ch, turn, 5 sc (= 5).

Rnd 13: 1 ch, turn, skip 1st stitch, 3 sc, 2 sc in the final stitch (= 5).

Rnd 14: 1 ch, turn, 5 sc (= 5).

Rnd 15: 1 ch, turn, skip 1st stitch, 3 sc, 2 sc in the final stitch (= 5).

Rnd 16: 1 ch, turn, 5 sc (= 5).

Rnd 17: 1 ch, turn, skip 1st stitch, 4 sc, pull the loop off the hook, stretch slightly and leave hanging. Do not fasten off and now use the small ball of yarn to crochet the other side of the tree.

Rnd 18: attach yarn in the 5th stitch for the other corner of Rnd 5. Make 5 sc (= 5).

Rnd 19: 1 ch, turn, skip 1st stitch, 3 sc, 2 sc in the final stitch (= 5).

Rnd 20: 1 ch, turn, 5 sc (= 5).

Rnd 21: 1 ch, turn, skip 1st stitch, 3 sc, 2 sc in the final stitch (= 5).

Rnd 22: 1 ch, turn, 5 sc (= 5).

Rnd 23: 1 ch, turn, skip 1st stitch, 3 sc, 2 sc in the final stitch (= 5).

Rnd 24: 1 ch, turn, 5 sc (= 5).

Rnd 25: 1 ch, turn, skip 1st stitch, 3 sc, 2 sc in the final stitch (= 5).

Rnd 26: 1 ch, turn, 5 sc (= 5).

Rnd 27: 1 ch, turn, skip 1st stitch, 3 sc, 2 sc in the final stitch (= 5).

Rnd 28: 1 ch, turn, 5 sc (= 5).

Rnd 29: 1 ch, turn, skip 1st stitch, 3 sc, 2 sc in the final stitch (= 5).

Place the wooden ring around this side of the Christmas tree. Don't forget: after the next round the work is closed. Make sure to do the same with the second Christmas tree later.

Rnd 30: insert the hook in the loop of Rnd 17 and crochet 5 sc onto the 5 sc of Rnd 25 (= 9).

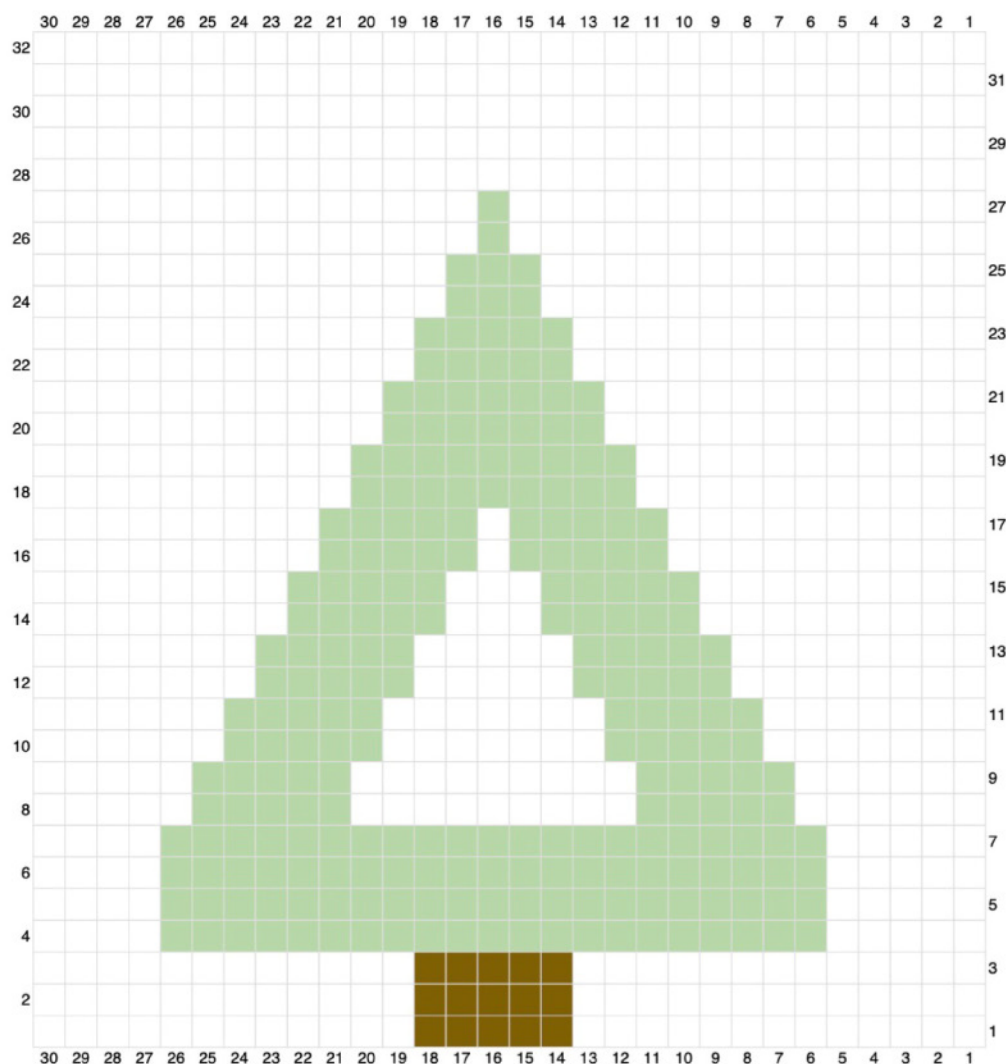
Rnd 31: 1 ch, turn, skip the 1st stitch, 8 sc (= 8).

Rnd 32: 1 ch, turn, skip the 1st stitch, 7 sc (= 7).

Rnd 33: 1 ch, turn, skip the 1st stitch, 6 sc (= 6).

Rnd 34: 1 ch, turn, skip the 1st stitch, 5 sc (= 5).

Pattern



Rnd 35: 1 ch, turn, skip the 1st stitch, 4 sc (= 4).

Rnd 36: 1 ch, turn, skip the 1st stitch, 3 sc (= 3).

Rnd 37: 1 ch, turn, skip the 1st stitch, 2 sc (= 2).

Rnd 38: 1 ch, turn, skip the 1st stitch, 1 sc (= 1).

Work 1 round of sc along the edge. Join the round with 1 sl st in the 1st stitch.

Rnd 39: change to brown, crochet 5 sc onto the 5 stitches at the bottom of the tree (=5).

Rnds 40-41: 1 ch, turn, 5 sc (= 5). Fasten off.

Rnd 42: attach in a corner of the open section. Crochet 1 round of sc all around and crochet sc2tog in each corner. Fasten off.

Finishing

Place the trees on top of each other. Attach brown in the corner between the tree and the trunk and sc around the trunk, working 2 sc in each corner. Insert the hook through the loops of both the top and bottom to make the sc. Join with 1 sl st in the 1st stitch and fasten off. Attach in the corner between the tree and trunk again and crochet 1 round of edging stitch (see 'This is how you make it') around the tree. Insert the hook through the loops of both the top and

bottom to make the sc. Join with 1 sl st in the 1st stitch and fasten off.

Sew the open center part of the tree together, stitch by stitch, aligning the rectangles. Insert the hook under the top 2 loops of 1 sc and do the same with the stitch of the lower tree.

Insert in the stitch of the lower tree and pull the hook under the 2 loops of the next stitch of the upper tree. Stuff the tree and trunk as you sew. Fasten off and weave in all ends. •

Designer: Marja Waalwijk,
tjeempie.com



Perfect for any party

GLAMOUR Headband

This headband will make you feel completely festive and for a good reason, as it's a truly unique accessory for any party.



What do you need

- Scheepjes Maxi Sweet Treat yarn: 1 ball each of Pale Peach 523, Salmon 414, Bridal White 105, Silver Green 402, Black Coffee 162
 - Hair tie
 - 2 mm crochet hook
 - Sewing needle
 - Scissors
- Yarn from Scheepjes.com



This is how you make it

This headband will be about 42 cm (including the hair tie) with a diameter of about 14 cm Ø. You can of course adjust the size to any size, whether it is for a child or a larger head.

Band (2 x)

Crochet 11 ch with Black Coffee

Rnd 1: 1 sc in the 2nd ch from the hook, 1 sc in each sc, turn.

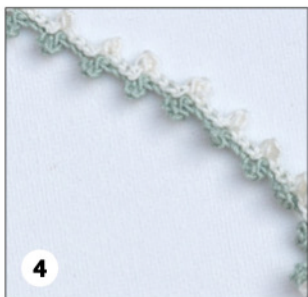
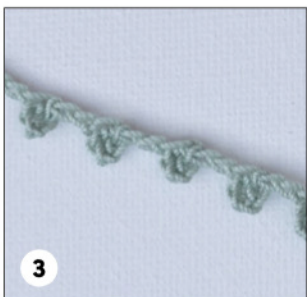
Rnd 2: 1 ch, 1 sc in each sc, turn.

Rnds 3- 5: rep Rnd 2. Do not turn after Rnd 5 but crochet along the band as follows: 1 ch (does not count as stitch), *1 sc, 1 ch, 1 sc in the next sc* (= the corner), 1 sc to the next corner, rep from * to * at the short and the long sides. Fasten off and weave in the end **1**.

Flower (7 x)

Crochet 39 ch with Pale Peach, 2 dc in the 4th ch from the hook, 1 sc in the next ch, *3 dc in the next ch, 1 sc in the next ch*. The work will start to curl, but that's okay. Rep from *to* to the end **2**.

Fasten off, leaving a long tail. Turn the petal garland into a circle to form a flower.



Baby's breath sprig (3 x)

Start with Silver Green and crochet 5 ch, 1 sl st in the 5th ch from the hook, crochet (7 ch, 1 sl st in the 5th ch from the hook) and rep 18 x **3**. Fasten off.

Join Bridal White. Work back along the other side of the chain: 3 ch, 1 sl st in the 3rd ch (crochet sl st up to the next picot on the other side, 3 ch, 1 sl st in the 3rd ch), rep to the end **4**. Fasten off and weave in the end.

Berry branch (3 x)

Start with Salmon and crochet *3 ch, 1 puff stitch in 2nd ch*. Rep from * to * until you have crocheted 100 puff stitches. Fasten off, leaving a long tail. Arrange the branches in a circle and place them on the headband between a flower and a baby's breath sprig.

Finishing

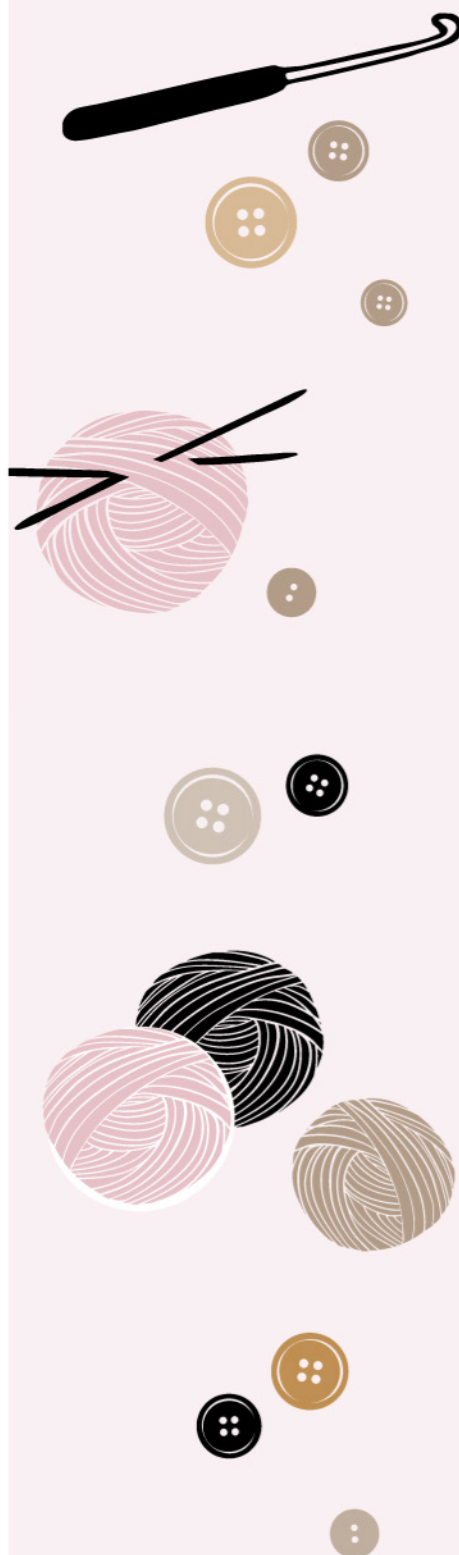
First, divide the flowers on one part of the headband and sew them in place with a few stitches **5**. Arrange the baby's breath sprigs so that a twisted sprig is placed between the 2nd and 3rd flower **6**. Place the berry branch in the same way and sew everything in place. Place the 2nd part of the headband with the wrong side down on top of the 1st part. First, crochet with sl st the short side and 2 stitches at the long side. Put the hair tie between the bands, skip 1 stitch and continue crocheting until 2 stitches remain. Place the other end of the hair tie here, skip 1 stitch and continue crocheting along the short side to the end of the round. Fasten off and weave in the end. •

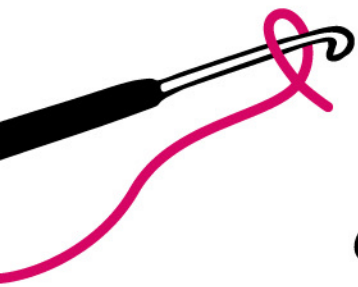
Designer: Monique van den Elzen, wolengaren.com



CROCHET HOOK SIZES

Metric (mm)	UK	US
0.60		14
0.75		12
1		11
1.25		7
1.50		6
1.75		5
2	14	
2.25		B-1
2.5	12	
2.75		C-2
3	10	
3.125 mm		D
3.25		D-3
3.5	9	E-4
3.75		F-5
4	8	G-6
4.25		G
4.5	7	7
5	6	H-8
5.5	5	I-9
5.75		J
6	4	J-10
6.5	3	K-10 1/2
7	2	
8	0	L-11
9	00	M/N-13
10	000	N/P-15
11.5		P-16
12		
15		P/Q





MORE Fun Crochet?



@FunCrochetMagazine



Etsy.com/shop/FunCrochetMagazine



Hobbyyou.nl/FunCrochetMagazine



www.FunCrochetMagazine.com