

Dreamland Knits



Sweet Gift of Love Scarf

Sizes: One size only.

Width: 29 cm.

Length: 140 cm.

Needles: 1 pair each 4 mm (US 6) and 4.5 mm (US 7) strait single pointed needles. One 4.5 mm cable stitch holder, one tapestry needle bent point and a measuring tape in centimeters.

Gauge: 21 st x 26 rows = 10 x 10 cm on 4.5 mm needle (knitted in pattern).

Materials: 5 skeins of 100% Baby Alpaca, Alpaca Warehouse www.alpaca4less.com (The company ships worldwide).

50 g = approx. 100 meters (1.76 oz = approx. 109 yards) Weight: DK.

2 skeins of 70% kid mohair & 30% silk Filcolana, TILIA, 25 g = 210 meters.

Yarn option: The Alpaca Warehouse DK weight yarn can be replaced by:
Drops 100% Alpaca PUNA Natural Mix, 50 g = 110 meters, or any other DK weight yarn.

This scarf is super soft, warm and fluffy. It is knitted from bottom up, while holding two yarns together throughout the whole project. If you have already knitted The Sweet Gift of Love Sweater, it would be super nice to use the same yarns you used to knit that.

Test swatch for gauge

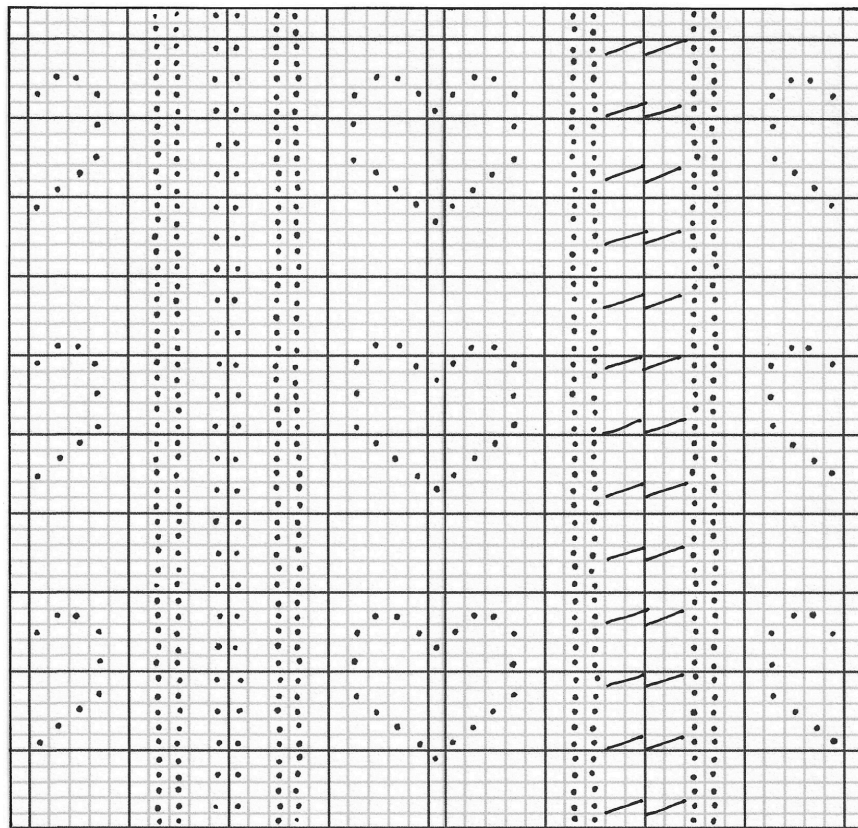
Gauge: 21 st x 26 rows = 10 x 10 cm on 4.5 mm needle (knitted in pattern).

For the test swatch we knit double the stitches and rows (plus one center stitch).

Gauge: 43 st x 52 rows = 20 X 20 cm on 4.5 mm needle (knitted in pattern).

Holding two yarns together (throughout the whole swatch), cast on 43 st. on a 4.5 mm strait single pointed knitting needle.

Dreamland Knits



Begin the test swatch as follows: on the first row WS (wrong side of your work, the charts don't include the cast on row).

Row 1, WS work

P7, k2, p4, k2, p13, k2, p4, k2, p7.

Row 2, RS work

K7, p2, sl 2 sts on to cable needle and hold at back, k2 then k2 from cable needle, p2, k13, p2, k1, p2, k1, p2, k7.

Row 3, WS work same as row 1.

Row 4, RS work

K7, p2, k4, p2, k13, p2, k1, p2, k1, p2, k7.

Row 5, WS work

P7, k2, p4, k2, p6, k1, p6, k2, p4, k2, p7.

Row 6, RS work

K1, p1, k5, p2, sl 2 sts on to cable needle and hold at back, k2 then k2 from cable needle, p2, k5, p1, k1, p1, k5, p2, k1, p2, k1, p2, k5, p1, k1.

Follow pattern from chart until you reached row 49 WS and cast off 43 stitches.

SCARF

Dreamland Knits

Holding two yarns together (throughout the whole pattern), cast on 61 st. on a 4 mm strait single pointed knitting needle. I like using Italian Cast on. Leave about 15 cm of yarn tail.

Begin the border rib as follows: on the first row WS (wrong side of your work, the charts don't include the cast on row) p2, then *k1, p1* repeat from * to * until 2 stitches are left, p2 these last two stitches. Turn work, RS, k2, then *p1, k1* repeat from * to * until 2 stitches are left, k2 these last two stitches. Work a total of 6 rows in this rib pattern.

Change to 4.5 mm needles. The first 6 rows are already knitted in rib border and your first row will be a WS row. Please follow the pattern from chart page A.

Row 7, WS work.

P2, k2, p4, k2, p6, k2, p4, k2, p13, k2, p4, k2, p6, k2, p4, k2, p2.

Row 8, RS work.

K2, p2, k4, p2, k6, p2, k4, p2, k13, p2, k1, p2, k1, p2, k6, p2, k4, p2, k2.

Row 9, WS work.

Same as row 7.

Row 10, RS work.

K2, p2, sl 2 sts on to cable needle and hold at back, k2 then k2 from cable needle, p2, k6, p2, sl 2 sts on to cable needle and hold at back, k2 then k2 from cable needle, p2, k6, p1, k6, p2, k1, p2, k1, p2, k6, p2, sl 2 sts on to cable needle and hold at front, k2 then k2 from cable needle, p2, k2.

Row 11, WS work.

P2, k2, p4, k2, p6, k2, p4, k2, p5, k1, p1, k1, p5, k2, p4, k2, p6, k2, p4, k2, p2.

Row 12, RS work.

K2, p2, k4, p2, k6, p2, k4, p2, k4, p1, k3, p1, k4, p2, k1, p2, k1, p2, k6, p2, k4, p2, k2.

Now follow the pattern from the chart until you knitted 13 heart patterns. Row 350 (Please follow the pattern from chart page B), is a RS row, we knit 4 more rows and change to 4 mm needles. Begin the border rib as follows: on the first row, row 354, RS work, k2, then *p1, k1* repeat from * to * until 2 stitches are left, k2 these last two stitches. Turn work, WS, p2, then *k1, p1* repeat from * to * until 2 stitches are left, p2 these last two stitches. Work a total of 6 rows in this rib pattern.

Now bind off all 61 stitches with Italian Cast-Off stitch and weave in last ends of threads.







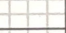
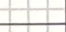
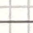
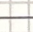
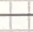
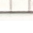
Blocking

Now it is time to block your scarf. I always wet block, it makes your knitwear look so beautiful!!!

Abbreviations:

Dreamland Knits

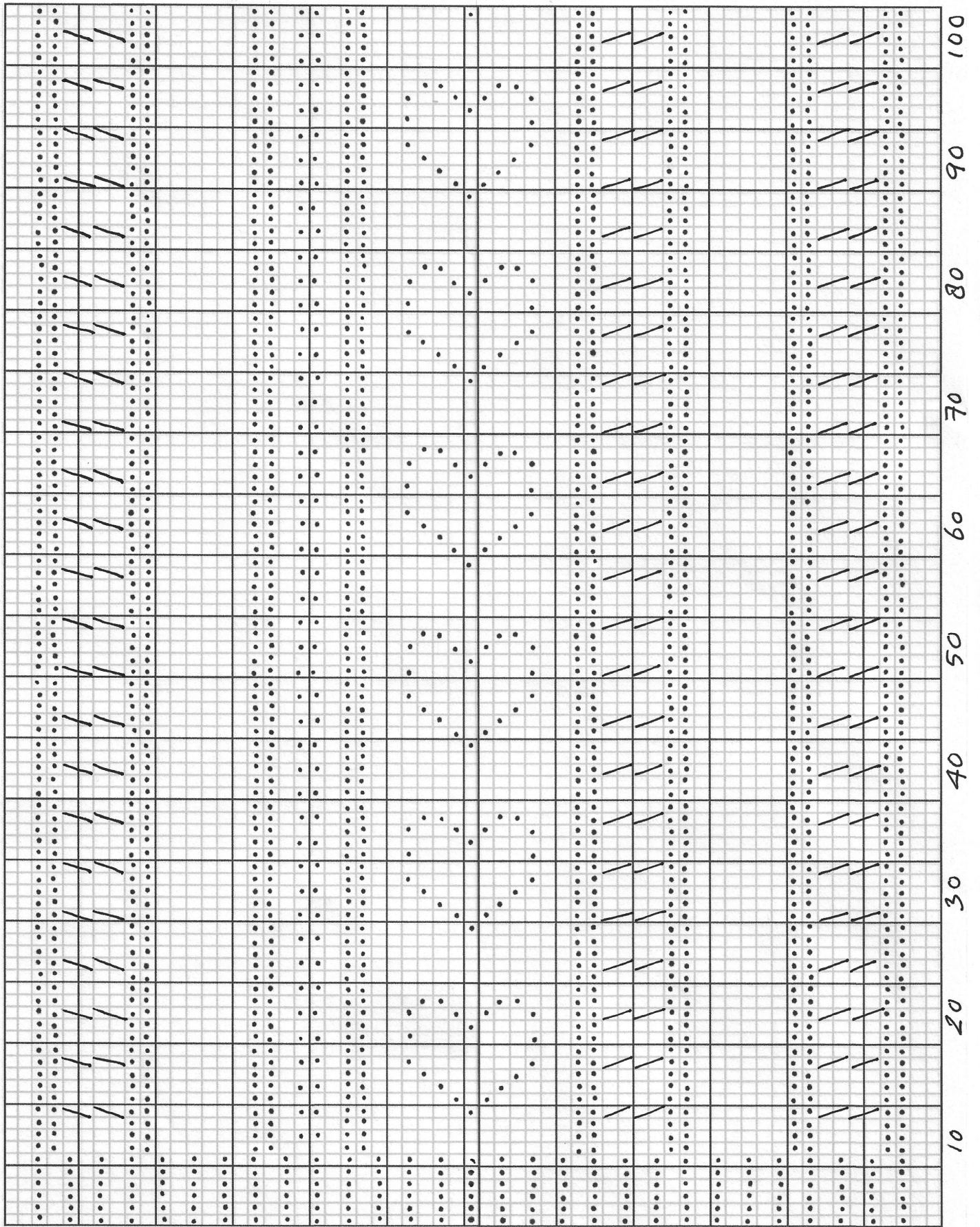
Cm	Centimeters.
K	Knit.
Mm	Millimeters.
P	Purl.
RS	Right side.
Sl	Slip.
Ssk	Slip, slip, knit.
Ssp	Slip, slip, purl.
St(s)	Stitch(es).
Tog	Together.
WS	Wrong side.

1		1. K1 on right-side rows, p1 on wrong side rows.
2		2. P1 on right-side rows, k1 on wrong side rows.
3		3. K2 tog on right-side rows, p2 tog on wrong side rows.
4		4. Ssk on right-side rows, p2 tog twisted on wrong side rows.
5		5. Increase 1 st by working k in front, then back, of st.
6		6. Yarn forward and over needle to make a stitch.
7		7. Sl 2 st(s) on to cable needle and hold at back, k2 then k2 from cable needle.
8		8. Sl 2 st(s) on to cable needle and hold at front, k2 then k2 from cable needle.
9		9. Sl 1 st on to cable needle and hold at back, k1 then k1 from cable needle.
10		10. Sl 1 st on to cable needle and hold at front, k1 then k1 from cable needle.
11		11. Marker point.
12		12. Marker point.

*Please note for stitch number 3, we knit the triangle stitch together with the stitch in front of it. On WS work, we P2 where the triangle is.

Instagram: @dreamlandknits
 Designs by Marjolijn Reuter - Ravelry
 Please use pattern for private use only and don't sell items produced from this pattern.
 Thank you so very much and warm wishes!
 Marjolijn :)

A



B

