

# HALIBUT HAT

BY CAITLIN HUNTER



BOYLAND  
KNITWORKS

# HALIBUT HAT



## MATERIALS

### Yarn:

Kelbourne Woolens Scout (100% wool)  
274 yards [250 m] - 100 g or other DK weight yarn

Sample shown in:

MC: Gray Heather

CC: Scarlett Heather

### Needles:

**Main:** US 6 [4 mm] circular needle 16" [40 cm] length for the hat body.

Double pointed needles of the same sizes suitable for small circumference knitting for the crown decreases

**Ribbing:** US 4 [3.5 mm] circular needle, 16" [40 cm] length

**Notions:** Stitch Marker, darning needle, scissors, balloon or bowl for blocking

## GAUGE

20 sts and 28 rounds = 4 inches [10 cm] in colorwork and stockinette on main gauge needles.

*Note- You should always knit your swatch the same way that the pattern is knit—in this case, in the round. Block your swatch as you will your finished garment and allow it to dry fully before measuring.*

## Sizes S (M, L)

**Circumference:** 20 (21.75, 23.25)" [51 (55.5, 59) cm]

**Height:** 10.5" [27 cm]

**Yardage:** *Please note that yardage is estimated, and can vary between knitters.*

**MC :** 105 (120, 135) yards [96 (110, 123.5) m]

**CC :** 65 (70, 75) yards [59.5 (64, 68.5) m]

# HALIBUT HAT

## DIRECTIONS

With the ribbing needles and MC, CO 100 (108, 116) sts using your preferred cast-on method. Sample uses Long Tail Cast-On. Join in the round and PM to indicate BOR, taking care not to twist sts.

### Ribbing

Round 1: \*K1, p1; repeat from \* to BOR.

Repeat Round 1 until work measures 1.5" [4 cm] from cast on edge.

*Switch to main gauge needles.*

K 1 round.

### Chart

Begin working the chart for your size as shown on page 3, 4 or 5. Work through all rounds of chart. Break CC.

### Finishing

Thread tapestry needle with yarn tail, and thread through remaining sts twice, pulling tight to close crown of hat.

Weave in ends. Steam- or wet-block hat to finished measurements.

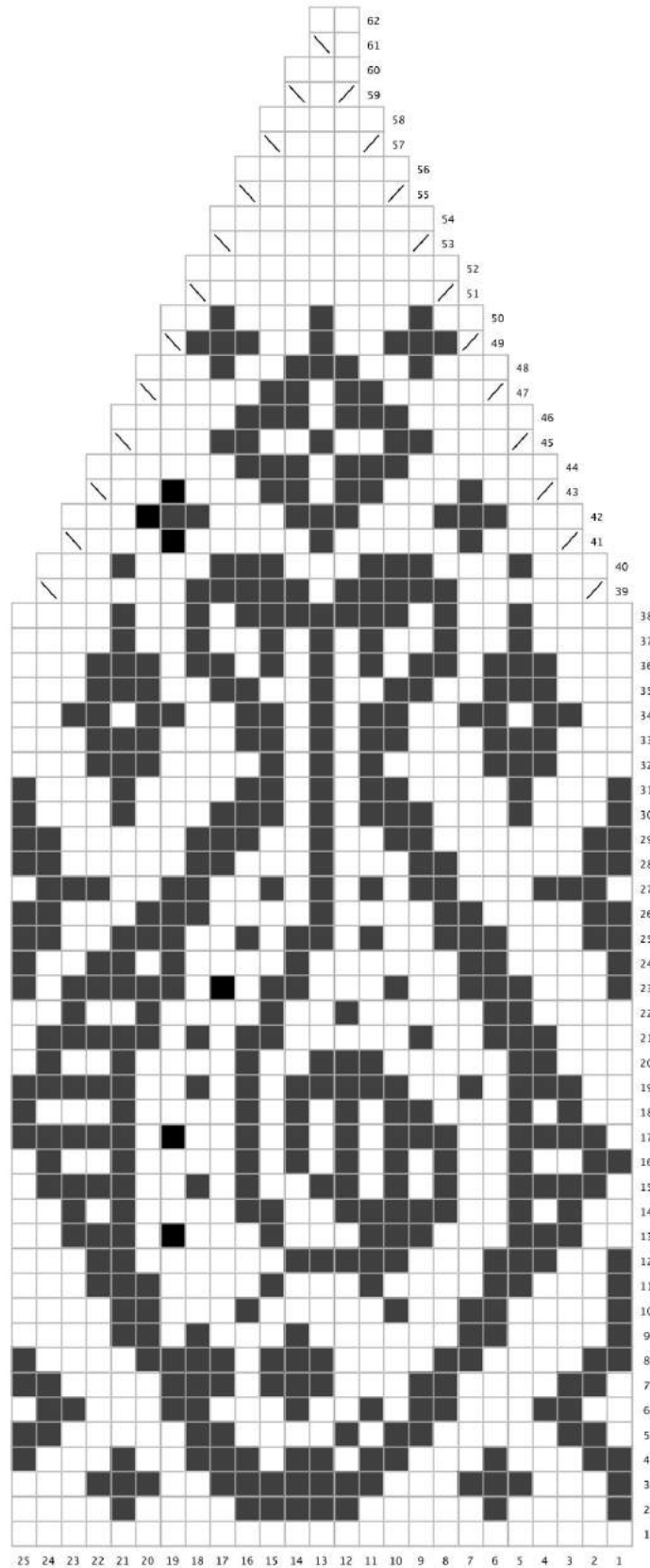
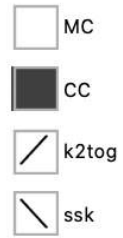
I like to soak my hats in cool water and wool wash, gently squeeze dry, and then allow to dry on a balloon that's been inflated to approximately the circumference of the wearer's head.



# HALIBUT HAT

## SIZE S CHART

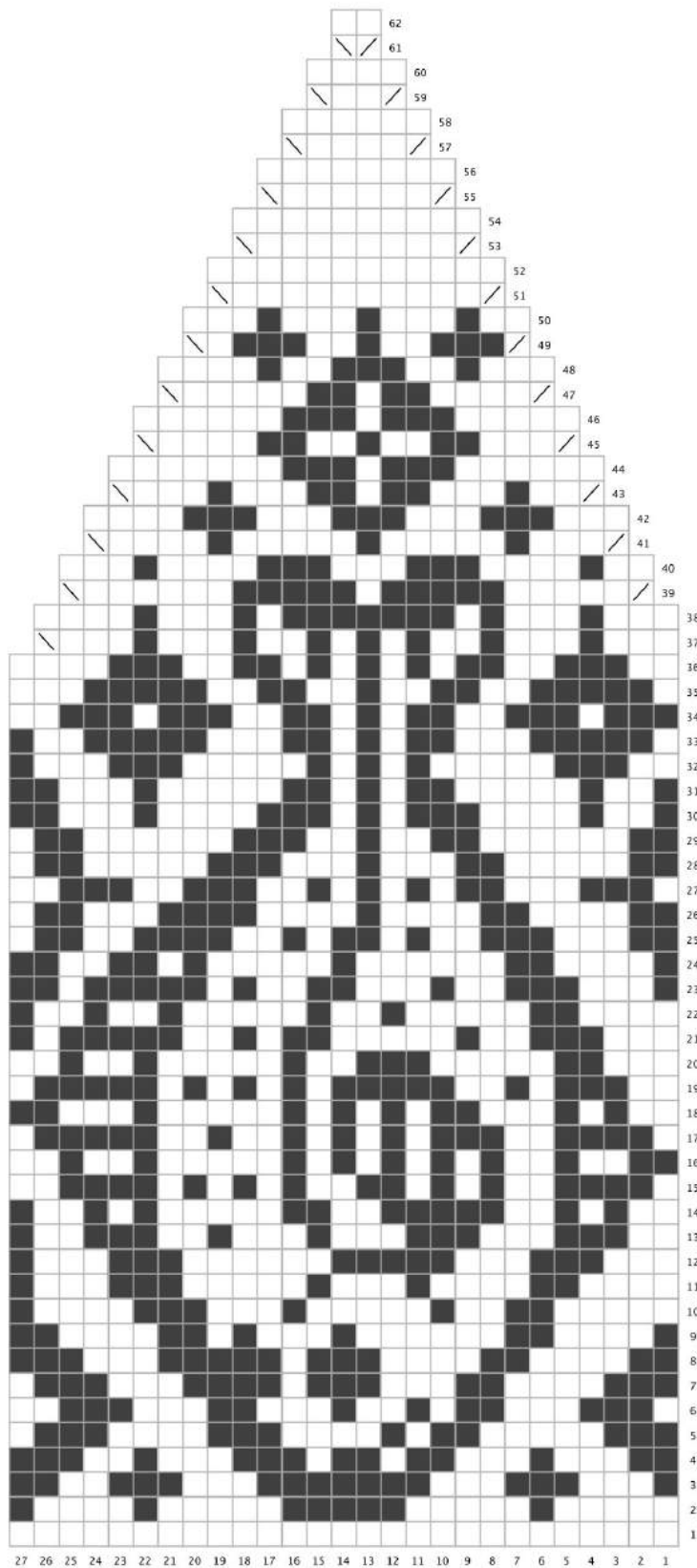
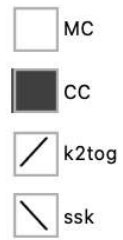
### KEY



# HALIBUT HAT

## SIZE M CHART

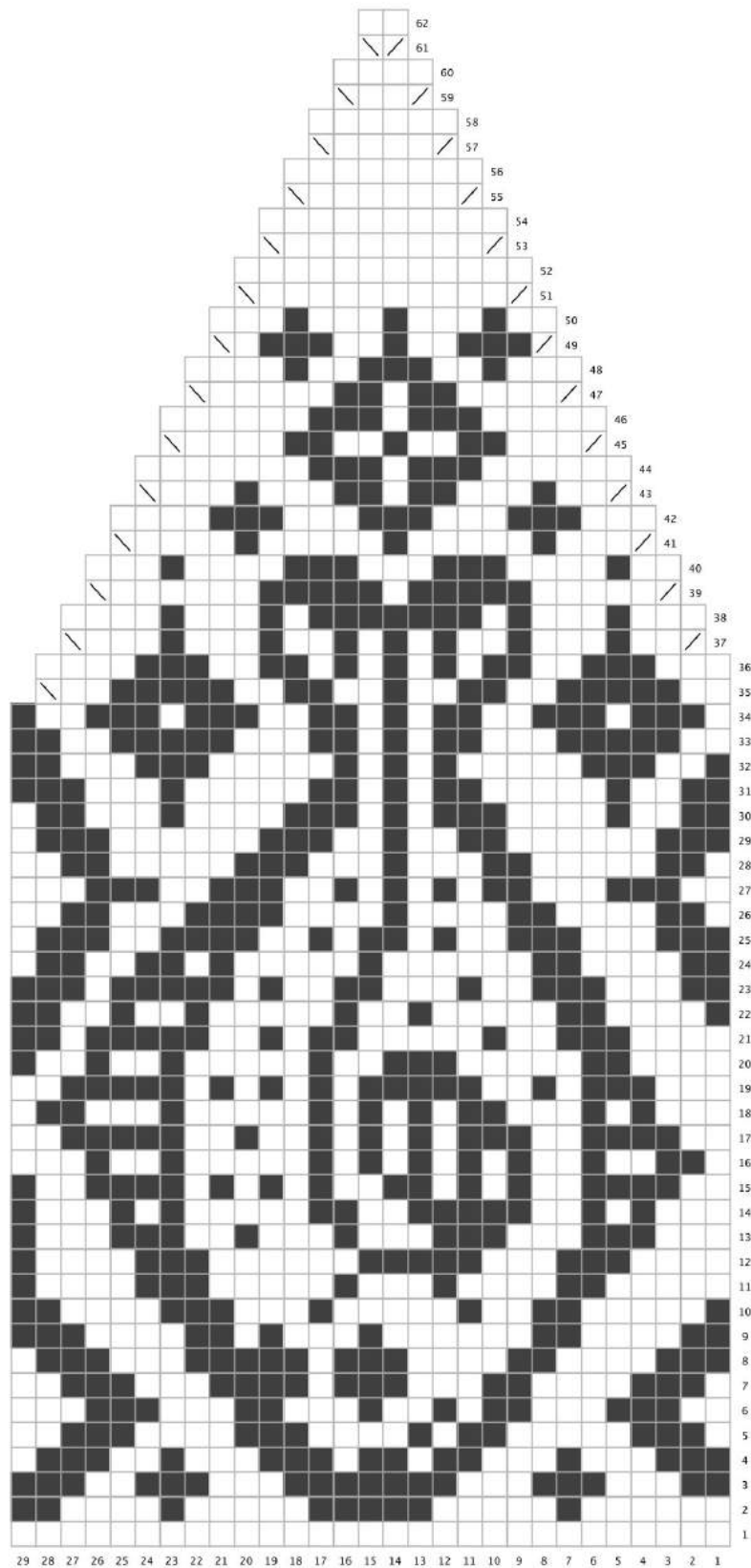
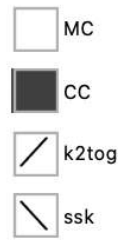
### KEY



# HALIBUT HAT

## SIZE L CHART

### KEY



# HALIBUT HAT

## ABBREVIATIONS

BOR	beginning of round
CC	Contrast Color
CO	Cast on
K	knit
k2tog	knit 2 together
MC	Main Color
P	purl
ssk	slip, slip, knit
st(s)	stitch(es)

For pattern support, please visit my Ravelry Group,  
Boyland Knitworks. You can contact the designer at  
[boylandknitworks@gmail.com](mailto:boylandknitworks@gmail.com).

Find more designs by Caitlin Hunter at  
[www.boylandknitworks.com](http://www.boylandknitworks.com)

On Ravelry as: [boylandknitworks](#)

Follow me on Instagram: [boylandknitworks](#)

Share your finished objects and see others on social  
media with the tags [#boylandknitworks](#) and  
[#halibuthat](#)

Thank you for supporting independent design!

