

PREMIER®  
YARNS

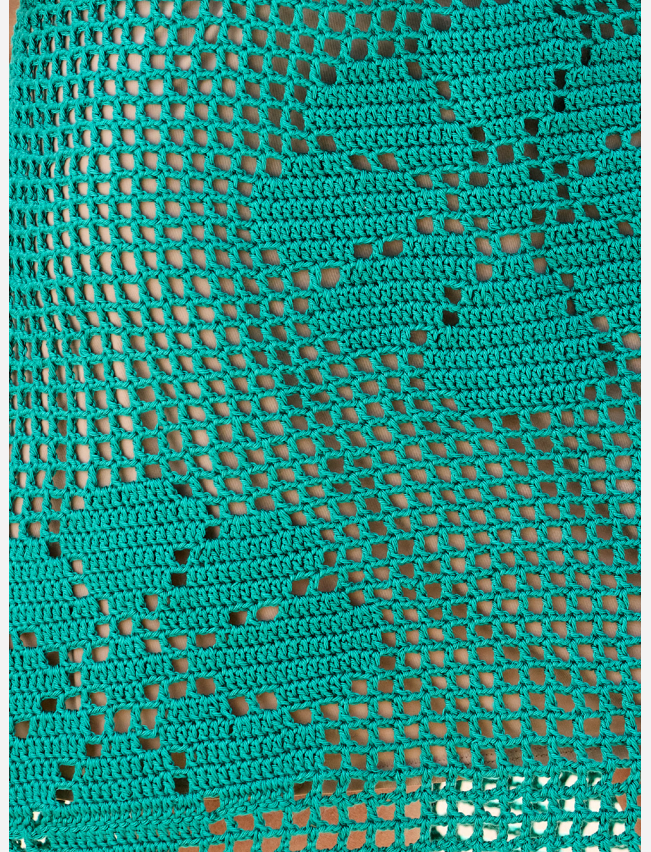


# Filet Flowers Dress

FREE CROCHET PATTERN



# Filet Flowers Dress



**TYPE:** Crochet

**DESIGNER:** Liz Salazar for Premier® Yarns

## **SIZES**

XS (S, M, L, 1X) (2X, 3X, 4X, 5X)  
Shown in M size.

## **FINISHED MEASUREMENTS:**

**Bust:** 32 (36, 40¾, 44, 48¾) (53½, 56¾, 60, 64¾)''

**Length:** 28¾ (29½, 30¾, 31½, 32) (32¾, 33½, 34½, 34¾)''

## **GAUGE:**

10 blocks x 10 rows/rnds = 4'' in filet  
crochet patt

**Save time, check your gauge.**

## **MATERIALS:**

Premier® Yarns Afternoon Cotton®  
(100% Mercerized Egyptian Giza  
Cotton; 1.75oz/50g, 136yds/125m)

2011-14 Deep Jade – 8 (8, 10, 11, 12)  
(13, 14, 16, 17) balls

## **HOOK & NOTIONS:**

- US Size B-1 (2.5 mm) or size  
needed to obtain gauge
- Tapestry needle
- 2 locking stitch markers

## **SKILLS/TECHNIQUES USED IN THIS PATTERN:**

- Chain, and double crochet stitches.
- Working in the Filet crochet technique and from a Filet crochet chart.
- Working in rounds and in turned rows.
- Standing double crochet.
- Seaming shoulders with mattress stitch.

## STITCH GUIDE

**Open Block:** [Dc in next dc, ch 2, sk 2 ch] or [dc in next dc, ch 2, sk 2 dc] these 3 sts count as 1 Open Block.

**Solid Block:** [Dc in each of next 3 dc] or [dc in next dc, 2 dc in next ch-2 sp] these 3 sts count as 1 Solid Block.

**Filet Crochet Patt** (multiple of 3 chs + 5)

**Row 1:** Dc in 8th ch from hook, \*ch 2, sk 2 ch, dc in next ch; rep from \* to last ch, dc in last ch, turn.

**Row 2:** Ch 5 (counts as dc, ch 2 throughout), sk 2 ch, dc in next dc, \*ch 2, sk 2 ch, dc in next dc; rep from \* across, turn.

Rep Row 2 for patt, incorporating Solid Blocks according to chart.

**Filet Crochet Patt in the Rnd** (multiple of 3 sts)

**Rnd 1:** Ch 5, sk 2 ch, \*dc in next dc, ch 2, sk 2 ch; rep from \* around, join to beg dc with a sl st.

Rep Rnd 1 for patt, incorporating Solid Blocks according to chart.

**Standing Double Crochet (standing dc):** With slip knot on hook, yo and insert hook in indicated st/sp and pull up a loop, (yo, pull through 2 loops on hook) twice.

## PATTERN NOTES

This Dress is worked from the top down. The Front and Back Bodice are worked separately in rows from the Shoulders down and joined together at the underarm. The Body is worked in rounds to the Split Hem. The Sleeves are worked in rounds directly onto the Dress. The Flowers are made using the Filet Crochet technique. Follow the chart where instructed to create the Flowers. The Flower design is symmetrical so the same is used when working in rows or rounds. Work Open Blocks and Solid Blocks as defined in the Stitch Guide. Each block consists of 3 stitches. Count each block as a set of 3 stitches to ensure block counts are correct and the flower chart is worked correctly.

## DRESS

### Front Bodice

#### First Shoulder

Ch 38 (44, 53, 59, 68) (74, 80, 83, 92).

Beg with Row 1, work 4 rows in **Filet Crochet Patt** – 11 (13, 16, 18, 21) (23, 25, 26, 29) **Open Blocks** per row. Fasten off. Weave in ends.

#### Second Shoulder

Ch 38 (44, 53, 59, 68) (74, 80, 83, 92).

Beg with Row 1, work 5 rows in **Filet Crochet Patt**, at end of last row, ch 51 (54, 54, 54, 54) (60, 60, 66, 66) – 11 (13, 16, 18, 21) (23, 25, 26, 29) **Open Blocks** and a 51 (54, 54, 54, 54) (60, 60, 66, 66)-ch Neck extension.

### Join Shoulders/Neck

Join Neck extension ch with a **standing dc** to last **Open Block** of First Shoulder, [ch 2, sk 2 chs, dc in next dc] to end, turn.

**Next Row:** Ch 5, sk 2 ch, dc in next dc, [ch 2, sk 2 chs, dc in next dc] to Neck extension, ch 2, sk first 2 chs of Neck extension, dc in next ch, [ch 2, sk 2 chs, dc in next ch] to last 2 chs of Neck extension, ch 2, sk last 2 chs, dc in first dc of Second Shoulder, [ch 2, sk 2 chs, dc in next dc] to end, turn – 39 (44, 50, 54, 60) (66, 70, 74, 80) **Open Blocks**.

**Next Row:** Work Row 2 of **Filet Crochet Patt**.

### Setup

Count 11 (13, 16, 18, 21) (24, 26, 28, 31) **Open Blocks** and pm in next **Open Block**, count 16 **Open Blocks** and pm in next **Open Block**. You are now set up to beg working from the filet crochet Flower Chart. The chart represents the group of 17 blocks bet the 2 markers and 19 rows/rnds. Work all blocks outside the 17 marked blocks as **Open Blocks**.

### Chart Rows

Work Rows 1-8 (9, 11, 12, 13) (14, 16, 17, 18) according to chart and as instructed above. Fasten off, weave in ends.

### Back Bodice

Work as Front Bodice to Chart Rows.

Work Rows 1-9 (10, 12, 13, 14) (15, 17, 18, 19) according to chart, at end of last row, do not fasten off.

**Joining Rnd:** Ch 2 (not a st, counts as ch-2 sp at underarm), join with a **standing dc** to last dc of last row of Front Bodice, work in est patt and according to chart to end of Front Bodice, ch 2 (counts as ch-2 sp at underarm), join with a sl st to Back Bodice – 2 Blocks inc'd at underarms, 80 (90, 102, 110, 122) (134, 142, 150, 162) total Blocks.

*Note: Pieces are now joined to beg working in rounds for Body. Place markers as instructed below to beg working the Body in Filet Crochet Patt in the Rnd.*

### Body

Starting at Back, set up the first 2 markers on the working rnd to work the next flower vertically aligned with the first flower as shown in the photo.

Turn piece so that Front is facing. The next set of 2 Front flowers should be staggered on either side of the first Front flower as shown in the photo.



Place the next set of markers so that you have 9 (13, 17, 19, 19) (21, 21, 23, 25) **Open Blocks** centered below the first flower. Now place the remaining 2 markers so that you have a set of 17 blocks marked to the left of the center **Open Blocks** and a set of 17 blocks marked to the right of the center **Open Blocks**. You will work the same Flower chart across all 3 sets of 17 marked Blocks. Work all other blocks as **Open Blocks**. To keep the flowers staggered yet still showing on the front of the garment for all sizes, most sizes will have more **Open Blocks** along the sides than between the 2 Front flowers.

### Chart Rnds

Work Rnds 1-19 of Body in **Filet Crochet Patt** in the Rnd and according to chart – 3 Filet Flowers made.

Adjust markers to working rnd so that the next flowers on Front and Back are aligned vertically with the first flowers worked.

Work Rnds 1-19 of Body in **Filet Crochet Patt** in the Rnd and according to chart – 2 Filet Flowers made.

Adjust markers to working rnd so that the next 3 flowers on Front and Back are aligned vertically with the second set of 3 Flowers made.

Work Rnds 1-9 (9, 13, 15, 17) (19, 19, 19, 19) of Body in **Filet Crochet Patt** in the Rnd and according to chart, at end of last rnd do not join, turn – 3 Filet Flowers made or partially made.

### Front Split Hem

#### Sizes XS (S, M, L, 1X) (-, -, -, -) Only

Complete rem rows according to chart and in **Filet Crochet Patt** across next 39 (44, 50, 54, 60) (-, -, -, -) Blocks, leaving 2 chs (1 Block) unworked along both sides for Split Hem.

Work 0 (1, 2, 3, 3) (-, -, -, -) more row(s) in **Filet Crochet Patt**. Fasten off.

#### Sizes - (-, -, -, -) (2X, 3X, 4X, 5X) Only

Work - (-, -, -, -) (4, 4, 5, 5) more rows in **Filet Crochet Patt** across next - (-, -, -, -) (66, 70, 74, 80) **Open Blocks**, leaving same 2 chs unworked along both sides for Split Hem. Fasten off.

### Back Split Hem

Join yarn with a sl st in next dc after 2 skipped chs at side. Rep as for Front Split Hem. Fasten off.

Seam shoulders using mattress st.

**Sleeves**

Sk the ch-2 sp at underarm and join yarn with sl st at the base of next dc and beg working along row ends.

**Setup Rnd:** Ch 5, \*dc in base of dc at next row end, ch 2; rep from \* around, ending at ch-2 sp at underarm, join to beg dc with a sl st – 30 (32, 36, 38, 40) (42, 46, 48, 50) **Open Blocks.**

Work in **Filet Crochet Patt in the Rnd** until Sleeve measures 4” from Setup Rnd. Fasten off.

Rep steps on opposite Sleeve. Fasten off.

**FINISHING**

Weave in ends.

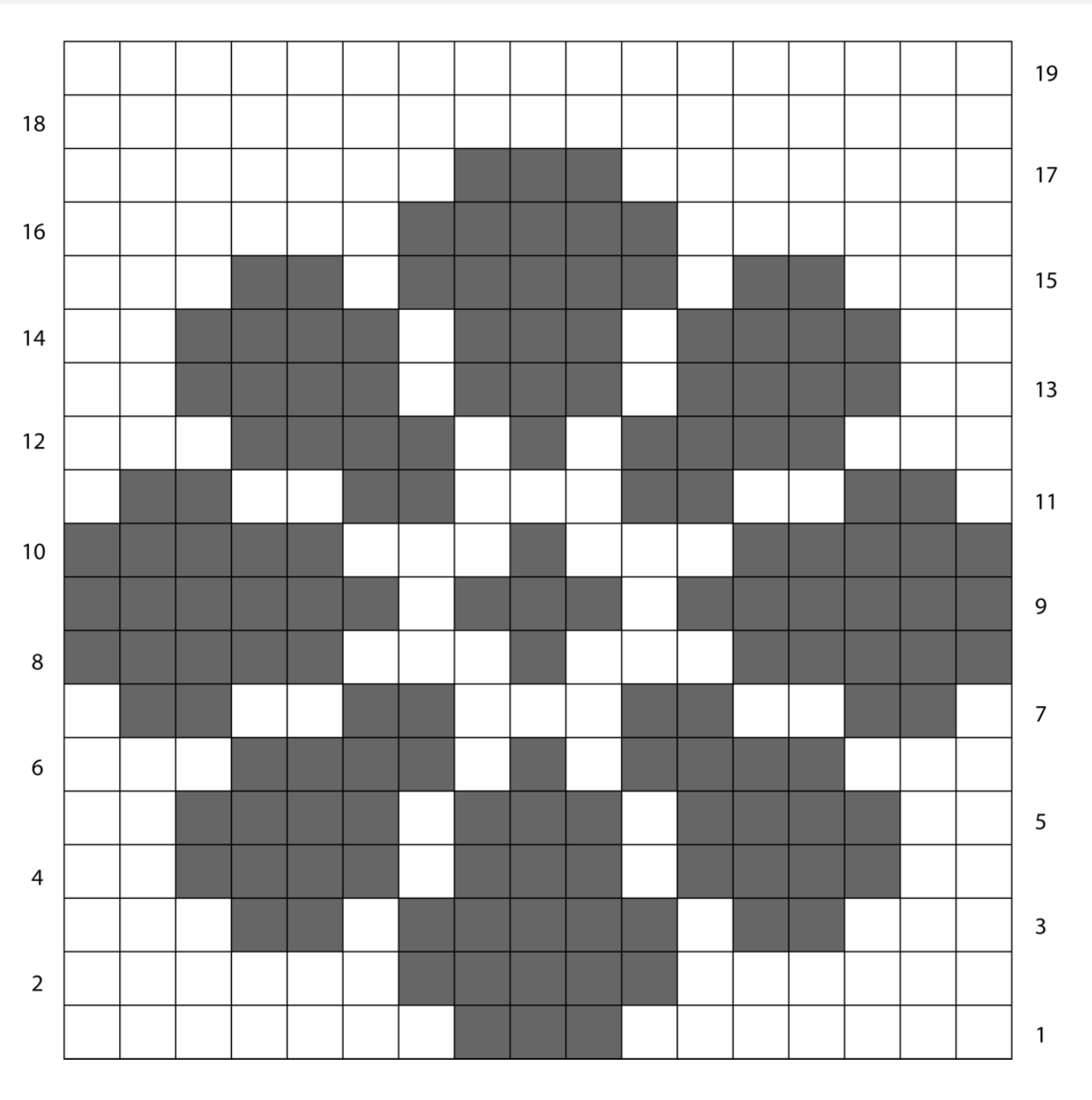
**MEET THE DESIGNER**




Liz is a Creative Manager on the Premier Yarns® team. She’s been creating crochet designs and patterns since 2016. Her favorites are sweaters, cardigans, and anything for the home. Knitting and weaving are a few of her other favorite hobbies and she is always up for learning new crafts and skills. Liz is currently delighted to be living in Kentucky with her husband and 2 sons.

ABBREVIATIONS	
beg	begin(ing)
bet	between
ch(s)	chain(s)
dc	double crochet
est('d)	establish(ed)
inc('d)	increase(d)
patt	pattern
pm	place marker
rem	remain(ing)
rep	repeat(ing)
rnd(s)	round(s)
sk	skip
sl st(s)	slip stitch(es)
sp(s)	space(es)
st(s)	stitch(es)
yo	yarn over


FILET FLOWER CHART



Key



Open Block



Solid Block

dress schematic

