



CASCINA CABLED HEADBAND

58126

by QuayIn Stark

FINISHED MEASUREMENTS

4" wide x 18" circumference, meant to be worn with 2-5" negative ease

YARN

Capra™ (DK weight, 85% Merino, 15% Cashmere; 123 yards/50g): Adriatic Heather 27668, 2 balls

HOOKS

US F/5 (3.75 mm) Crochet hook, or size needed to obtain gauge

NOTIONS

Yarn Needle
Elastic Hair Tie

GAUGE

27 sts and 14 rows = 4" in pattern, blocked.
(Note: Stitch count to gauge measurement may vary slightly depending on rows because of cables)

wecrochet®

©Copyright WeCrochet®. All rights reserved. For private, non-commercial use only.
Please see our website for terms of use | www.crochet.com • 1-855-251-5727

For pattern support, please contact TheQUOE@gmail.com

Cascina Cabled Headband

Notes

The twisting and braiding of cables in tandem with pops of bobbles conjure a picture of crawling ivy and climbing roses on this contemporary yet classic headband.

The Cascina Cabled Headband is an oval-shaped ear warmer, worked flat from point to point, then seamed together at the end with an elastic hair tie. Unique wedge cable shaping grows from one cable to six at the start and shrinks from six cables down to one at the end.

Special Stitches

2-skip 2-2 Front Post Treble Left Cross (2-sk 2-2 FPLC) (worked over 6 sts)

Sk next 4 sts, FPtr around next 2 sts, ch 1, working in front of both FPtr just made, FPtr around first 2 skipped sts.

2-skip 2-2 Front Post Treble Right Cross (2-sk 2-2 FPRC) (worked over 6 sts)

Sk next 4 sts, FPtr around next 2 sts, ch 1, working behind both FPtr just made, FPtr around first 2 skipped sts.

2-skip 3-2 Front Post Treble Left Cross (2-sk 3-2 FPLC) (worked over 7 sts)

Sk next 5 sts, FPtr around next 2 sts, ch 1, working in front of both FPtr just made, FPtr around first 2 skipped sts.

2-skip 3-2 Front Post Treble Right Cross (2-sk 3-2 FPRC) (worked over 7 sts)

Sk next 5 sts, FPtr around next 2 sts, ch 1, working behind of both FPtr just made, FPtr around first 2 skipped sts.

Double Crochet 5 Together Bobble (DC5tog)

YO, insert hook in indicated st, YO, pull up a lp, pull through 2 lps on hook, [YO, insert hook same sp, pull up a lp, pull through 2 lps on hook] 4 times, YO, pull through all 6 lps on hook.

DIRECTIONS

Ch 7.

Row 1 (RS): HDC in 2nd ch from hook, HDC in next st, DC in next 2 sts, HDC in next 2 sts, turn. 4 HDC, 2 DC.

Row 2 (WS): Ch 1 (does not count as HDC throughout), HDC in next 2 sts, BPDC in next 2 sts, HDC in next 2 sts, turn.

Row 3: Ch 1, HDC in next 2 sts, FPDC in next 2 sts, HDC in next 2 sts, turn.

Rows 4-7: Rep Rows 2-3 twice.

Row 8: Rep Row 2.

Row 9: Ch 1, HDC in next 2 sts, 2 FPDC in next st, ch 1, 2 FPDC in next st, HDC in next 2 sts, turn. 4 HDC, 4 FPDC, 1 ch-1 sp.

Row 10: Ch 1, HDC in next 2 sts, BPDC in next 2 sts, 3 HDC in ch-1 sp, BPDC in next 2 sts, HDC in next 2 sts, turn. 7 HDC, 4 BPDC.

Row 11: Ch 1, HDC in next 2 sts, FPDC in next 2 sts, HDC in next st, 2 DC in next st, HDC in next st, FPDC in next 2 sts, HDC in next 2 sts, turn. 6 HDC, 2 DC, 4 FPDC.



Row 12: Ch 1, HDC in next 2 sts, BPDC in next 2 sts, 2 HDC in next st, BPDC in next 2 sts, 2 HDC in next st, BPDC in next 2 sts, HDC in next 2 sts, turn. 8 HDC, 6 BPDC.

Row 13: Ch 1, HDC in next 2 sts, FPDC in next 2 sts, HDC in next 2 sts, 2 FPDC in next st, ch 1, 2 FPDC in next st, HDC in next 2 sts, FPDC in next 2 sts, HDC in next 2 sts, turn. 8 HDC, 8 FPDC, 1 ch-1 sp.

Row 14: Ch 1, [HDC in next 2 sts, BPDC in next 2 sts] 2 times, 3 HDC in ch-1 sp, [BPDC in next 2 sts, HDC in next 2 sts] 2 times, turn. 11 HDC, 8 BPDC.

Row 15: Ch 1, [HDC in next 2 sts, FPDC in next 2 sts] 2 times, HDC in next st, 2 DC in next st, HDC in next st, [FPDC in next 2 sts, HDC in next 2 sts] 2 times, turn. 10 HDC, 2 DC, 8 FPDC.

Row 16: Ch 1, [HDC in next 2 sts, BPDC in next 2 sts] 2 times, 2 HDC in next st, BPDC in next 2 sts, 2 HDC in next st, [BPDC in next 2 sts, HDC in next 2 sts] 2 times, turn. 12 HDC, 10 BPDC.

Row 17: Ch 1, [HDC in next 2 sts, FPDC in next 2 sts] 2 times, HDC in next 2 sts, 2 FPDC in next st, ch 1, 2 FPDC in next st, HDC in next 2 sts, [FPDC in next 2 sts, HDC in next 2 sts] 2 times, turn. 12 HDC, 12 FPDC, 1 ch-1 sp.

Row 18: Ch 1, [HDC in next 2 sts, BPDC in next 2 sts] 3 times, 3 HDC in ch-1 sp, [BPDC in next 2 sts, HDC in next 2 sts] 3 times, turn. 15 HDC, 12 BPDC.

Row 19: Ch 1, [HDC in next 2 sts, FPDC in next 2 sts] 3 times, 2 HDC in next st, HDC in next st, 2 HDC in next st, [FPDC in next 2 sts, HDC in next 2 sts] 3 times, turn. 17 HDC, 12 FPDC.

Row 20: Ch 1, [HDC in next 2 sts, BPDC in next 2 sts] 3 times, HDC in next 2 sts, DC5tog (see *Special Stitches*) in next st, HDC in next 2 sts, [BPDC in next 2 sts, HDC in next 2 sts] 3 times, turn. 16 HDC, 1 DC5tog, 12 BPDC.

Row 21: Ch 1, [HDC in next 2 sts, FPDC in next 2 sts] 3 times, HDC in next 5 sts, [FPDC in next 2 sts, HDC in next 2 sts] 3 times, turn. 17 HDC, 12 FPDC.

Row 22: Ch 1, [HDC in next 2 sts, BPDC in next 2 sts] 3 times, HDC2tog over next 2 sts, HDC in next st, HDC2tog over next 2 sts, [BPDC in next 2 sts, HDC in next 2 sts] 3 times, turn. 15 HDC, 12 BPDC.

Row 23: Ch 1, [HDC in next 2 sts, FPDC in next 2 sts] 2 times, HDC in next st, 2 HDC in next st, 2-sk 3-2 FPLC (see *Special Stitches*), 2 HDC in next st, HDC in next st, [FPDC in next 2 sts, HDC in next 2 sts] 2 times, turn. 14 HDC, 8 FPDC, 1 FPLC, 1 ch-1 sp.

Row 24: Ch 1, [HDC in next 2 sts, BPDC in next 2 sts] 2 times, HDC in next st, HDC2tog over next 2 sts, BPDC in next 2 sts, 3 HDC in ch-1 sp, BPDC in next 2 sts, HDC2tog over next 2 sts, HDC in next st, [BPDC in next 2 sts, HDC in next 2 sts] 2 times, turn. 15 HDC, 12 BPDC.

Row 25: Ch 1, HDC in next 2 sts, FPDC in next 2 sts, HDC in next st, 2 HDC in next st, 2-sk 2-2 FPRC (see *Special Stitches*), 2 HDC in next st, HDC in next st, 2 HDC in next st, 2-sk 2-2 FPRC, 2 HDC in next st, HDC in next st, FPDC in next 2 sts, HDC in next 2 sts, turn. 15 HDC, 4 FPDC, 2 FPRC, 2 ch-1 sps.

Row 26: Ch 1, HDC in next 2 sts, BPDC in next 2 sts, HDC in next st, HDC2tog over next 2 sts, BPDC in next 2 sts, 2 HDC in ch-1 sp, BPDC in next 2 sts, HDC2tog over next 2 sts, BPDC in next 2 sts, 2 HDC in ch-1 sp, BPDC in next 2 sts, HDC2tog over next 2 sts, HDC in next st, BPDC in next 2 sts, HDC in next 2 sts, turn. 15 HDC, 12 BPDC.

Row 27: Ch 1, HDC in next st, 2 HDC in next st, 2-sk 2-2 FPLC (see *Special Stitches*), 2 HDC in next 2 sts, 2-sk 3-2 FPRC (see *Special Stitches*), 2 HDC in next 2 sts, 2-sk 2-2 FPLC, 2 HDC in next st, HDC in next st, turn. 14 HDC, 3 FPLC, 2 ch-1 sps.

Row 28: Ch 1, HDC in next st, HDC2tog over next 2 sts, BPDC in next 2 sts, 2 HDC in ch-1 sp, BPDC in next 2 sts, [HDC2tog over next 2 sts] 2 times, BPDC in next 2 sts, 3 HDC in ch-1 sp, BPDC in next 2 sts, [HDC2tog over next 2 sts] 2 times, BPDC in next 2 sts, 2 HDC in ch-1 sp, BPDC in next 2 sts, HDC2tog over next 2 sts, HDC in next st, turn. 15 HDC, 12 BPDC.

Rows 29-30: Rep Rows 25-26.

Rows 31-32: Rep Rows 23-24.

Rows 33-36: Rep Rows 19-22.

Rows 37-64: Rep Rows 23-36.

Row 65: Ch 1, [HDC in next 2 sts, FPDC in next 2 sts] 3 times, sk next 3 sts, [FPDC in next 2 sts, HDC in next 2 sts] 3 times, turn. 12 HDC, 12 FPDC.

Row 66: Ch 1, [HDC in next 2 sts, BPDC in next 2 sts] 2 times, HDC in next 2 sts, [BPDC2tog over next 2 sts] 2 times, HDC in next 2 sts, [BPDC in next 2 sts, HDC in next 2 sts] 2 times, turn. 12 HDC, 10 BPDC.

Row 67: Ch 1, [HDC in next 2 sts, FPDC in next 2 sts] 2 times, HDC2tog over next 2 sts, FPDC in next 2 sts, HDC2tog over

next 2 sts, [FPDC in next 2 sts, HDC in next 2 sts] 2 times, turn. 10 HDC, 10 FPDC.

Row 68: Ch 1, [HDC in next 2 sts, BPDC in next 2 sts] 2 times, HDC in next st, HDC2tog over next 2 sts, HDC in next st, [BPDC in next 2 sts, HDC in next 2 sts] 2 times, turn. 11 HDC, 8 BPDC,

Row 69: Ch 1, [HDC in next 2 sts, FPDC in next 2 sts] 2 times, sk next 3 sts, [FPDC in next 2 sts, HDC in next 2 sts] 2 times, turn. 8 HDC, 8 FPDC.

Row 70: Ch 1, HDC in next 2 sts, BPDC in next 2 sts, HDC in next 2 sts, [BPDC2tog over next 2 sts] 2 times, HDC in next 2 sts, BPDC in next 2 sts, HDC in next 2 sts, turn. 8 HDC, 6 BPDC.

Row 71: Ch 1, HDC in next 2 sts, FPDC in next 2 sts, HDC2tog over next 2 sts, FPDC in next 2 sts, HDC2tog over next 2 sts, FPDC in next 2 sts, HDC in next 2 sts, turn. 6 HDC, 6 FPDC.

Row 72: Ch 1, HDC in next 2 sts, BPDC in next 2 sts, HDC in next st, HDC2tog over next 2 sts, HDC in next st, BPDC in next 2 sts, HDC in next 2 sts, turn. 7 HDC, 4 BPDC.

Row 73: Ch 1, HDC in next 2 sts, FPDC in next 2 sts, sk next 3 sts, FPDC in next 2 sts, HDC in next 2 sts, turn. 4 HDC, 4 FPDC.

Row 74: Ch 1, HDC in next 2 sts, [BPDC2tog over next 2 sts] 2 times, HDC in next 2 sts, turn. 4 HDC, 2 BPDC.

Row 75: Ch 1, HDC in next 2 sts, FPDC in next 2 sts, HDC in next 2 sts, turn.

Row 76: Ch 1, HDC in next 2 sts, BPDC in next 2 sts, HDC in next 2 sts, turn.

Rows 77-82: Rep Rows 75-76. Fasten off.

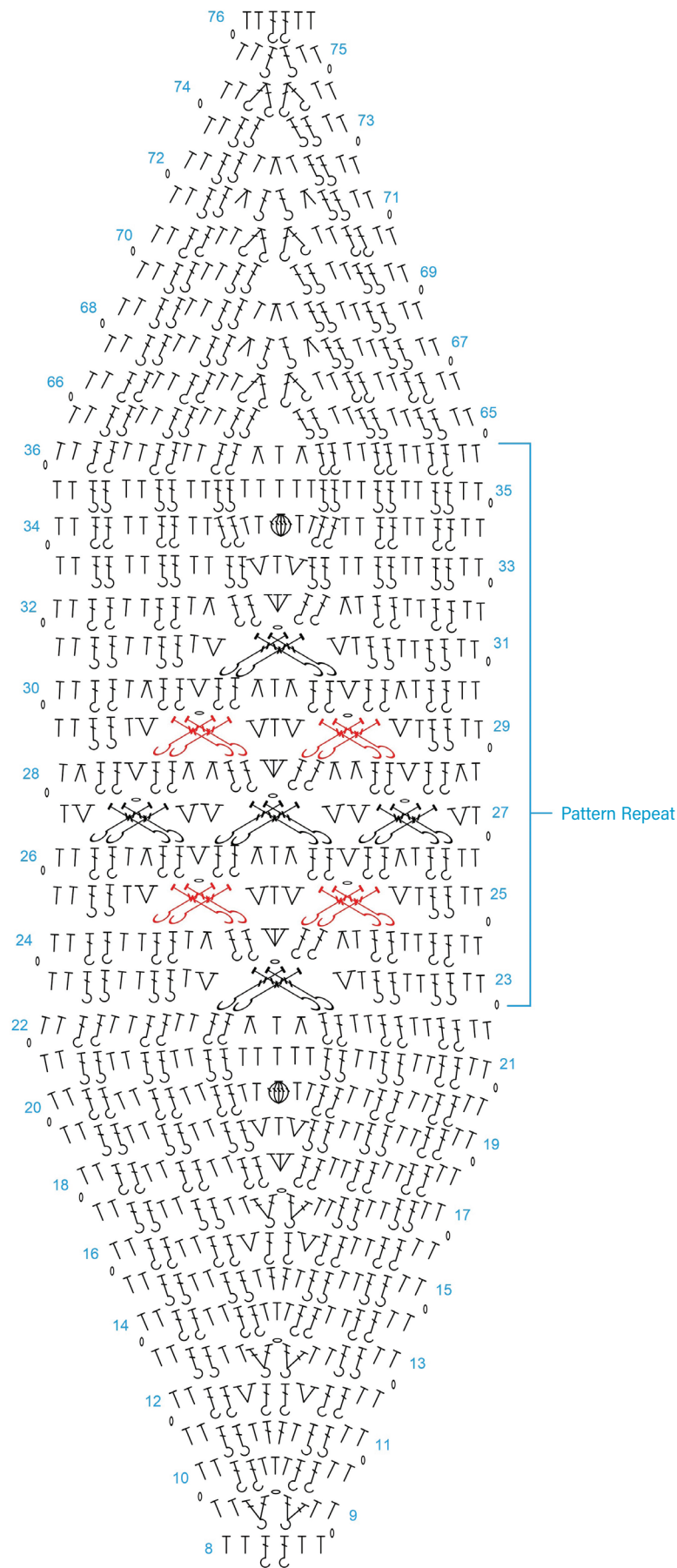
Finishing

Weave in ends, wash and block to diagram. Once blocked, fold over end flap on either side of the headband to WS, catching hair tie between flap and headband. Taking darning needle and excess yarn, whipstitch flap down to headband. Repeat process on the other side.

#CascinaHeadband



Cascina Chart



LEGEND

- ch
- HDC
- HDC2tog
- 2 HDC in same st
- 3 HDC in same st
- DC
- DC5tog
- FPDC
- FPDC2tog
- 2 FPDC in same st
- BPDC
- BPDC2tog
- 2-sk 2-2 FPRC
- 2-sk 2-2 FPLC
- 2-sk 3-2 FPLC



CROCHET ABBREVIATIONS all abbreviations are in US terms

beg	beginning	FSC	foundation single crochet	shell	a group of stitches all worked in the same stitch
Blp	single or double crochet in back loop only	FPDC	front post double crochet	sk	skip
bo	bobble	FPtr	front post treble	sl	slip
BPDC	back post double crochet	HDC	half double crochet	sl st	slip stitch
BPtr	back post treble	LDC	linked double crochet	sp	space
C (1, 2...)	contrast color (1, 2...)	lp(s)	loop(s)	st(s)	stitch(es)
CC	contrast color	MC	main color	tr	treble crochet
ch(s)	chain(s)	PC	popcorn stitch	Tch	top of turning chain made at start of previous row
ch-sp	chain space	PM	place marker	WS	wrong side
CSC	center single crochet (also known as waistcoat stitch or crochet knit stitch)	PS	puff stitch	YO	yarn over
DC	double crochet	rem	remaining	*	repeat directions given from *
EDC	extended double crochet	rep	repeat	[]	work stitches within [] as many times as directed
ESC	extended single crochet	RM	remove marker	()	work stitches within () in the same stitch or space
Flp	single or double crochet in front loop only	rnd(s)	round(s)		
		RS	right side		
		SC	single crochet		
		SC2tog	single crochet two together		

TUNISIAN ABBREVIATIONS

FwP	forward pass	TKS	Tunisian knit stitch	Tslst	Tunisian slip stitch
RetP	return pass	TPS	Tunisian purl stitch	Ttr	Tunisian treble crochet
TDC	Tunisian double crochet	TRS	Tunisian reverse stitch	TTW	Tunisian twisted stitch
TFS	Tunisian full stitch	TSC	Tunisian single crochet		
THDC	Tunisian half double crochet	TSS	Tunisian simple stitch		