



Northern Augustins No 9

By Anne-Sophie Nørby Velling



Dictionary

*Please note that this is a general dictionary,
applicable for all Augustins patterns.*

st(s) // stitch(es)
r // row
rnd(s) // round(s)
BOR // beginning of round/row

k // knit
p // purl
k tbl // knit through back loop
p tbl // purl through back loop
sl st // slip st
s1wyif // slip 1 st with yarn held in front
pssso // pass the slipped st over

k2tog // knit 2 sts together
k2tog tbl // knit 2 sts together through the back loop
p2tog // purl 2 sts together
p2tog tbl // purl 2 sts together through the back loop

dec // decrease
inc // increase
yo // yarn over
m1L // make 1 left inc, knitwise
m1R // make 1 right inc, knitwise
m1P // make 1 left inc, purlwise

M // marker
cM // chart marker
rM // raglan marker
sM // side marker
sl M // slip marker

RS // right side
WS // wrong side
CF // center front
CB // center back



About

Size: a (b) c (d) e (f) g (h).

Your bust circumference: 80 (90) 100 (110) 120 (130) 140 (150) cm.

Total bust width of the sweater: 100 (110) 120 (130) 140 (150) 160 (170) cm.

Full length, measured CF below the neckline: 52 (54) 56 (58) 60 (62) 64 (66) cm.

Positive ease: This sweater has a positive ease at approximately 20 cm, depending on your bust circumference. When deciding which size to knit, choose the one which corresponds to your own actual bust circumference.

Gauge: The gauge in height varies depending on whether you are knitting with 1 or 2 colours.

- 1 colour (yoke): 24 sts x 32 rows = 10 x 10 cm in Stockinette Stitch, at needle size 3,5 mm.

- 2 colours (yoke, body and sleeves): 24 sts x 30 rows = 10 x 10 cm in Stockinette Stitch, at needle size 3,5 mm.

Needle sizes: 2 different needle sizes are used, whilst knitting the sweater.

- 2 sets of circular needles 3 mm (the lengths 40 and 60 cm are recommended).

- 1 set of circular needles 3,5 mm (the lengths 40, 60 and 80 cm are recommended).

Yarn: The sweater is knitted with 2 threads held together in each of the 2 colours.

Colour A is the main colour, whilst colour B is the contrast colour.

- 1st thread - colour A: "Organic Wool 1", in colour "Sart Gul - 03", Krea Deluxe (150m per 50 g).

- 2nd thread - colour A: "Deluxe Silk Mohair", in colour "Sart Gul - 03", Krea Deluxe (240m per 20 g).

- 3rd thread - colour B: "Organic Wool 1", in colour "Rød - 35", Krea Deluxe (150m per 50g).

- 4th thread - colour B: "Deluxe Silk Mohair", in colour "Rød - 35", Krea Deluxe (240m per 20 g).

Amount: The following amounts of yarn are used when knitting the sweater.

- 1st thread - colour A: 300 (300) 350 (400) 450 (500) 550 (600) g.

- 2nd thread - colour A: 80 (80) 100 (100) 120 (140) 140 (160) g.

- 3rd thread - colour B: 150 (150) 200 (250) 300 (350) 400 (450) g.

- 4th thread - colour B: 40 (40) 60 (80) 80 (100) 100 (120) g.

Method: The sweater is knitted top-down in the round in Stockinette Stitch. All edges of the sweater are knitted in rib, and the neckline is double layered. When knitting the round yoke, body and sleeves, a series of charts is followed to create the multicolored pattern.

Before you begin

- Please read the entire pattern before casting on.

- Be sure to make a swatch before beginning, to ensure the right gauge.

- Knitting with dominance: for this sweater, colour B is the dominant colour. When knitting, hold colour B over your index finger, whilst holding color A over both your index- and middle finger. Thereby, colour B becomes the dominant colour, as it is closest to your knitwear.

- In this pattern, the following methods are used: Stockinette Stitch, rib, left leaning increases, German Short Rows, Judy's Magic Cast On, 3-needle knitting, as well as Italian Bind Off.

Pattern

Neckline

With colour A and 2 sets of circular needles 3 mm, cast on 212 (216) 220 (224) 228 (232) 236 (240) 280 sts, using the method "Judy's Magic Cast On" - 106 (108) 110 (112) 114 (116) 118 (120) sts on each set.

Now, knit *k 1, p 1* for the first 106 (108) 110 (112) 114 (116) 118 (120) sts, and then place the

following 106 (108) 110 (112) 114 (116) 118 (120) sts on a thread to rest - the resting sts must later be used when folding the neckline to become double layered.

Over the 106 (108) 110 (112) 114 (116) 118 (120) sts which are left on the needle, continue to knit in the rnd in the following way:

Gather work, and place a M between the first and last st = M1, which is CB and BOR.
Knit *k 1, p 1* until the neckline measures 16 cm in total.

Now, the neckline must be folded, and then knitted together using the method “3-needle knitting” to make it double layered. This is done in the following way:

Starting at BOR, place the 106 (108) 110 (112) 114 (116) 118 (120) resting sts onto a new circular needle 3 mm, and place the 2 needles with their WS facing each other, so that the neckline will be knitted together from the RS.

Now, *k2tog* (1 st from each of the 2 needles) throughout the rnd.

Change to circular needles 3,5 mm, and k 1 rnd, whilst at the same time evenly increasing 24 (32) 40 (48) 56 (64) 72 (80) sts, using the method “m1L”.

There are now a total of 130 (140) 150 (160) 170 (180) 190 (200) sts on the needle.

To secure the right fit of the back, a series of German Short Row turns must now be made:

Starting at M1 from the RS, k 33 (35) 38 (40) 43 (45) 48 (50) sts, turn the work, and place the first st purlwise onto the right-side needle with the yarn held in front of the work.

Pull the thread backwards (double st), and then p until reaching M1.

Then, p 33 (35) 38 (40) 43 (45) 48 (50) sts, turn the work, and place the first st purlwise onto the right-side needle with the yarn held in front of the work.

Pull the thread backwards (double st), and then k until reaching M1.

*Starting at M1 from the RS, k until 4 sts before the last made double st, turn the work, and place the first st purlwise onto the right-side needle with the yarn held in front of the work.

Pull the thread backwards (double st), and then p until reaching M1.

Then, p until 4 sts before the last made double st, turn the work, and place the first st purlwise onto the right-side needle with the yarn held in front of the work.

Pull the thread backwards (double st), and then k until reaching M1.*

Repeat *-* one more time, so that there are 3 turns on each side of M1.

Yoke

Now, the yoke must be knitted.

The multicoloured pattern of the sweater is worked with *colour A* as the main color and *colour B* as the contrast colour.

Continue by knitting the yoke in the following way:

Starting at BOR, knit *Chart 1*, which is 61 rows in height - join *colour B* to the work at the 28th row.

When *Chart 1* is completed, there is a total of 364 (392) 420 (448) 476 (504) 532 (560) sts on the needle.



Now, repeat the 61th row of *Chart 1* (marked in the chart with a green box) until the yoke is 23 (23,5) 24 (24,5) 25 (25,5) 26 (26,5), measured CF from below the neckline and downwards.

The yoke has now been knitted.

On the next rnd, repeat the 61th row of *Chart 1* one last time whilst at the same time dividing the work for body and sleeves in the following way:

- Start at BOR.
- Following the 61th row as the stitch pattern indicate, k 52 (57) 62 (67) 72 (77) 82 (87) sts (*back*).
- Place the next 78 (82) 86 (90) 94 (98) 102 (106) sts on a thread to rest (*1st sleeve*).
- Following the 61th row as the stitch pattern indicate, cast on 16 (18) 20 (22) 24 (26) 28 (30) with *colour A* and *B*, and then place a M after the 8th (8th) 10th (10th) 12th (12th) 14th (14th) new st = sM1 (note, that in order to later knit the sleeve chart correctly, it is important that sM1 is placed after an even number of cast on stitches, rather than centered on the cast on row).
- Following the 61th row as the stitch pattern indicate, k 104 (114) 124 (134) 144 (154) 164 (174) sts (*front*).
- Place the next 78 (82) 86 (90) 94 (98) 102 (106) sts on a thread to rest (*2nd sleeve*).
- Following the 61th row as the stitch pattern indicate, cast on 16 (18) 20 (22) 24 (26) 28 (30) with *colour A* and *B*, and then place a M after the 8th (8th) 10th (10th) 12th (12th) 14th (14th) new st = sM2 (note, that in order to later knit the sleeve chart correctly, it is important that sM2 is placed after an even number of cast on stitches, rather than centered on the cast on row).
- Following the 61th row as the stitch pattern indicate, k the last 52 (57) 62 (67) 72 (77) 82 (87) sts (*back*).
- There is now a total of 240 (264) 288 (312) 336 (360) 384 (408) sts on the needle for the body.

Let sM1 and sM2 rest in the work, whilst knitting the body, as they later must be used when knitting the sleeves.

Body

Now the body of the sweater must be knitted.

Starting at BOR, knit *Chart 2*, which is 81 rows in height - join *colour B* to the work at the 28th row.

When *Chart 2* is completed, repeat the 81th row of the chart (marked in the chart with a green box) until the sweater is 49 (51) 52,5 (54,5) 56 (58) 59,5 (61,5) cm in total, measured CF from below the neckline and downwards (or until it is 3 (3) 3,5 (3,5) 4 (4) 4,5 (4,5) cm from being the preferred length).

Then, k 1 rnd with *colour B* and break the yarn in *colour B* - from this point onwards, the body is only worked with *colour A*.

Change to circular needle 3 mm and k 1 rnd.

Then, continue to knit rib in the rnd *k 1, p 1* until the edge measures 2,5 (2,5) 3 (3) 3,5 (3,5) 4 (4) cm.

To finish the rib edge, knit the last 4 rnds in the following way:

1st rnd: Knit *k 1, slip knit 1 st purlwise with the yarn in front*, and repeat *-* throughout the rnd.

2nd rnd: Knit *slip 1 purl st purlwise with the yarn in back*, and repeat *-* throughout the rnd.

3rd rnd: Knit *k 1, slip knit 1 st purlwise with the yarn in front*,

and repeat *-* throughout the rnd.

4th rnd: Knit *slip 1 purl st purlwise with the yarn in back*, and repeat *-* throughout the rnd.

Break the yarn, and bind off all sts using the Italian Bind Off method.

Sleeves

Now the 2 sleeves must be knitted.

Start by establishing the sts for the first sleeve in the following way:

- With needle size 3,5 mm, and starting at sM1 from the RS, pick up 8 (8) 10 (10) 12 (12) 14 (14) sts directly in the armhole cast on row (the new sts are to the left of sM1).
- In continuation hereof, place the 78 (82) 86 (90) 94 (98) 102 (106) resting sleeve sts onto the needle.
- Finish, by picking up 10 (6) 8 (12) 14 (10) 12 (16) new sts directly in the armhole cast on row (these sts are to the right of sM1).

You are now back at sM1, and there is a total of 96 (96) 104 (112) 120 (120) 128 (136) sts on the needle.

Place a M (M2) between the first and last new st and let it follow down along the sleeve, as it marks BOR.

Now, join *colour A* and *B* to the work, and then knit the sleeve in the following way:

Starting at BOR, knit *Chart 3A (3B) 3A (3B) 3A (3B) 3A (3B)*, which is 51 rows in height.

When *Chart 3A (3B) 3A (3B) 3A (3B) 3A (3B)* is completed, repeat the *40th-51st row* of the chart (marked in the chart with a green box) until the sleeve is 41 cm in total, measured from the armhole cast on row and downwards (or until it is 3 (3) 3,5 (3,5) 4 (4) 4,5 (4,5) cm from being the preferred length).

Then, k 1 rnd with *colour B* and break the yarn in *colour B* - from this point onwards, the body is only worked with *colour A*.

Change to circular needle 3 mm and k 1 rnd.

Then, continue to knit rib in the rnd *k 1, p 1* until the edge measures 2,5 (2,5) 3 (3) 3,5 (3,5) 4 (4) cm.

To finish the rib edge, knit the last 4 rnds in the following way:

1st rnd: Knit *k 1, slip knit 1 st purlwise with the yarn in front*, and repeat *-* throughout the rnd.

2nd rnd: Knit *slip 1 purl st purlwise with the yarn in back*, and repeat *-* throughout the rnd.

3rd rnd: Knit *k 1, slip knit 1 st purlwise with the yarn in front*,
and repeat *-* throughout the rnd.

4th rnd: Knit *slip 1 purl st purlwise with the yarn in back*, and repeat *-* throughout the rnd.

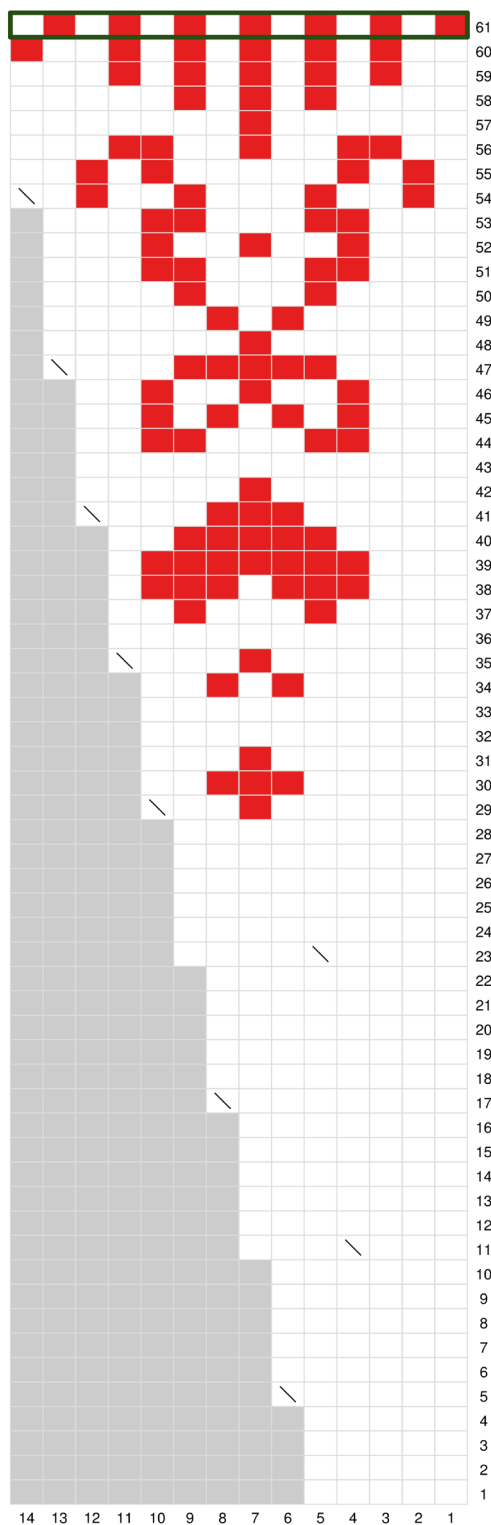
Break the yarn, and bind off all sts using the Italian Bind Off method.

Knit the 2nd sleeve in the same way as the 1st.

Finishing

- Weave in all ends.
- Steam or rinse the sweater, lay it into shape, and let it dry laying flat.

Chart 1



Symbols





-  Farve A / Colour A / Farge A: Strikkes r / k this st.
-  Farve B / Colour B / Farge B: Strikkes r / k this st.
-  1 ve-udt (bundfarve) / m1L (main colour) / ve-økn (bunnfarge).
-  Ingen m / Non existent st.

Chart 2

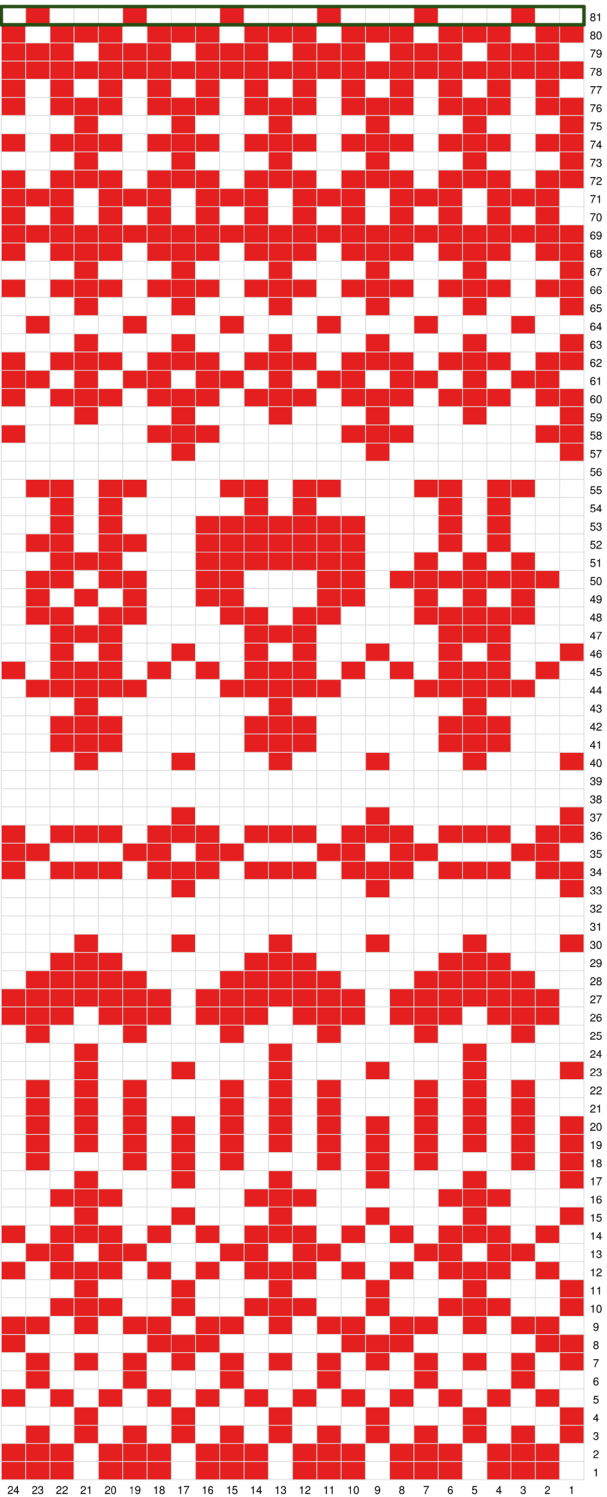


Chart 3A

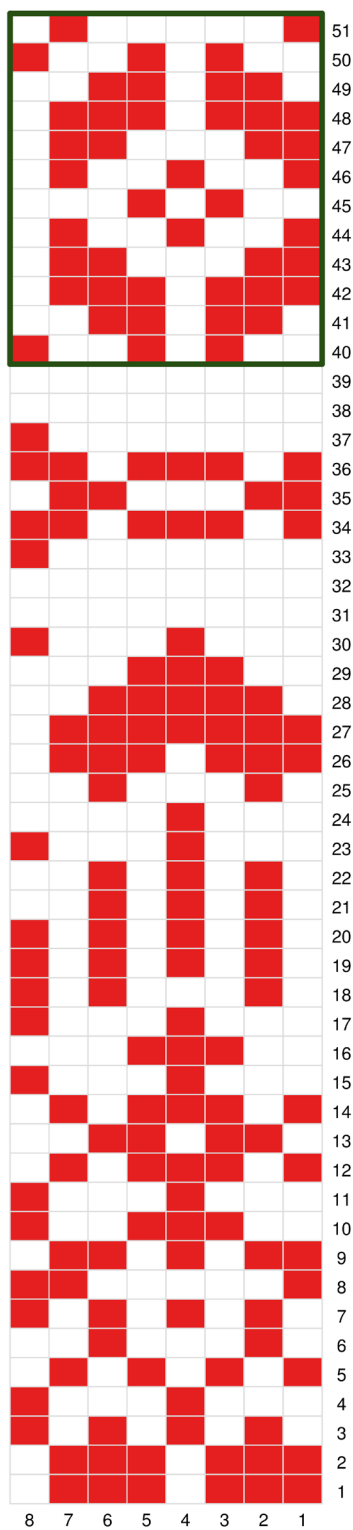
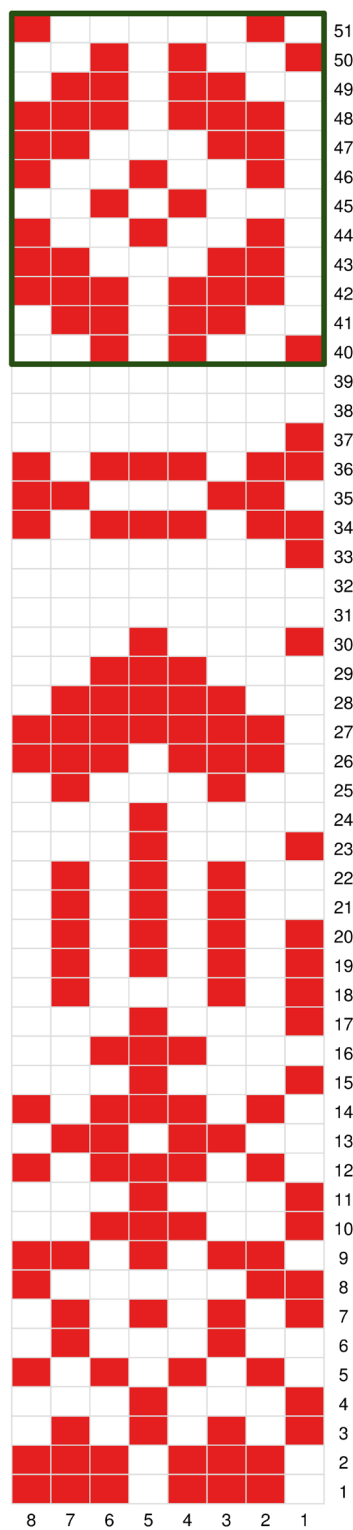


Chart 3B



Notes

.....

.....

.....

.....

.....

.....

.....

.....

.....

.....

.....

.....

.....

.....

.....

*This pattern is designed
by Augustins, Anne-Sophie Nørby Velling*

The pattern is for private use only. Do not reproduce, resell or
share the pattern in any way. Please notice that you are not
allowed to sell any items knitted from the pattern either.

© Copyright Augustins, 2025
www.augustins.dk // [@augustins.dk](https://www.instagram.com/augustins.dk) // [#northernaugustinsno9](https://www.facebook.com/northernaugustinsno9)

