



Ambler Quilt Hat

By: Katryn Seeburger

This hat is designed to keep you comfortable and warm as you amble on chilly days full of sunshine. Evoking those heritage qualities found in the coziest homes, may this hat provide feelings of joy and warmth as you make and wear it.

Gauge

For gauge in stranded colorwork In the round:

28 stitches x 32 rows = 4 x 4 inches [10 x 10 cm]

To gauge swatch: cast on 72 stitches with colorwork needles, join your work, and knit the Adult Small Brim chart

Suggested Needles

Colorwork: US 2 [2.75 mm] 16" circulars [40cm] or needles you prefer for small circular knitting.

Plain Stockinette: US 1 [2.25 mm] 16" circular [40cm] or needles you prefer for small circular knitting.

Note: This needle is used only in the stockinette portion of the brim. I like to go down one needle size to help get a closer gauge to the colorwork in the round, and reduce potential bunching on the inside of the brim.

Suggested Yarn

Fingering Weight

Sample:

Stitch Stuff Yarn: Home Stuff (100% Non Super Wash Shaniwo Wool 100g / 450yds [420m])

MC: Mindful

CC: Chocolate

Requirements:

- MC: 25g, 31g, 41g (56g, 60g, 66g)
113yds, 139yds, 185yds (252yds, 270yds, 297yds)
[103m, 127m, 170m (230m, 247m, 272m)]
- CC: 21g, 26g, 34g (46g, 50g, 55g)
95yds, 117yds, 158yds (207yds, 225yds, 248yds)
[87m, 107m, 145m (190m, 206m, 227m)]

Schematic Measurements

This hat is designed to fit with a slight amount of negative ease.

0.25", 1", 1", (1", 1.5", 1.25") [0.6cm, 2.5cm, 2.5cm (2.5cm, 4cm, 3cm)]

Please Note: This type of colorwork has less stretch than your standard stockinette hat and you may need to size up or down based on your preferred fit.

If you'd like more negative ease, please swatch and record the difference between relaxed to fully stretched swatch. This will help you best estimate the stretch ratio before choosing a size with more negative ease.

Designed to fit below Head Circumference:

14", 16", 18" (20", 22", 24") [35.5cm, 40.5cm, 45.5cm (51cm, 56cm, 61cm)]

Typical head circumference for newborn, toddler, child (youth, adult small, adult large)

Reminder: There is less stretch in this hat due to the nature of the colorwork design. Please be sure to measure the intended head to confirm which size you'd like to make.

Techniques Used

Knitted Cast On

Stranded Colorwork In the Round

Joining Two Rows for Folded Hem

Double Stitch Turn

Decreases

Abbreviation Key

MC	Main Color
CC	Contrast Color
BOR	Beginning of Row
kl	Knit 1
PM	Place Marker
SM	Slip Marker
DS	Double Stitch
k2tog	Knit 2 Together
ssk	Slip Slip Knit



Garment Length with Folded Brim

5.5", 6", 7" (9", 9", 9")

[14cm, 15cm, 17.5cm (22.5cm, 22.5cm, 22.5cm)]

Garment Circumference

13.75", 15", 17.25" (19.5", 20.5", 22.75")
[34.5cm, 37.5cm, 43cm (49cm, 51.5cm, 57cm)]

Brim

Cast On

Using CC. and US 2 [2.75 mm] needles.

Cast on 96, 104, 120 (136, 144, 160) total stitches using a knitted cast on. PM at BOR. Join for knitting in the round.

Please Note: Using CC yarn for the cast on will make your first row more visible and aid in folding the brim further on in the process.

Round 1: Using MC and US 1 [2.25 mm] needles. Knit to BOR

Repeat Round 1 for a total of 16, 20, 24 (30, 30, 30) rounds.

Colorwork Set Up Row:

Using MC and US 2 [2.75 mm] needles *Knit 24, 26, 30 (34, 36, 40) stitches. PM (distinct from BOR). Repeat from * a. total of three times. Knit to BOR

Please note: The markers placed in this round are to help separate the colorwork repeats for easy chart tracking. You should have one BOR marker and three repeat markers

Colorwork Knitting:

Using both MC and CC. begin knitting colorwork in the round. I recommend catching floats every 4 stitches.

Follow the chart on page 4, 4, 5 (5, 6, 6).

Folding the Brim:

Weave in the cast on CC yarn end before folding the brim.

Following the colorwork chart, fold your cast on edge inside the hat so that it sits against the live stitches, wrong sides together. Using your left needle, pick up the first stitch of the first MC row, and knit it together with the first live stitch on your needle. Repeat this step until all stitches have been worked.

(Test Knitters found this tutorial by Stephen West to be helpful for this technique: <https://youtube/kJLwSJBRJQ?si=tYBEK8UTUOWXEJGD>)

Once the brim is folded, continue with the colorwork chart for the brim.

Body and Crown

Round 1: Complete one DS to turn your work and start knitting in the opposite direction.

This is important to have colorwork facing outside in the end on brim and body, so trust the process!

Follow the chart for the body and crown for your given size, and be sure to knit the DS when you approach it after Row 1 in the chart.

The charts for each size are on the following pages 7, 8, 9 (10, 11, 12).

Complete the chart entirely following instructions for the colorwork and the decreases in the crown.

Bind Off

Once the last row of the chart is complete, cut the MC yarn with a 6" tail. Thread your tapestry needle and run the tail through the remaining 16, 8, 16 (12, 16, 16) live stitches, tighten the tail and weave in on the inside to secure.

Blocking

Follow the blocking instructions for your yarn and wool wash and lay your piece flat to dry.

Be sure to fold the brim up to secure its position as it dries.

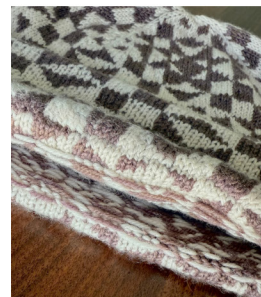
You can find the bottom of the brim by finding the row that you joined your first row to your colorwork row. This row will appear tighter and you will be able to feel the cast on row inside.

The colorwork rows you knitted in the brim chart after the fold should roll towards the inside to create a neat appearance.

Once cast off, this is what your hat should look like!

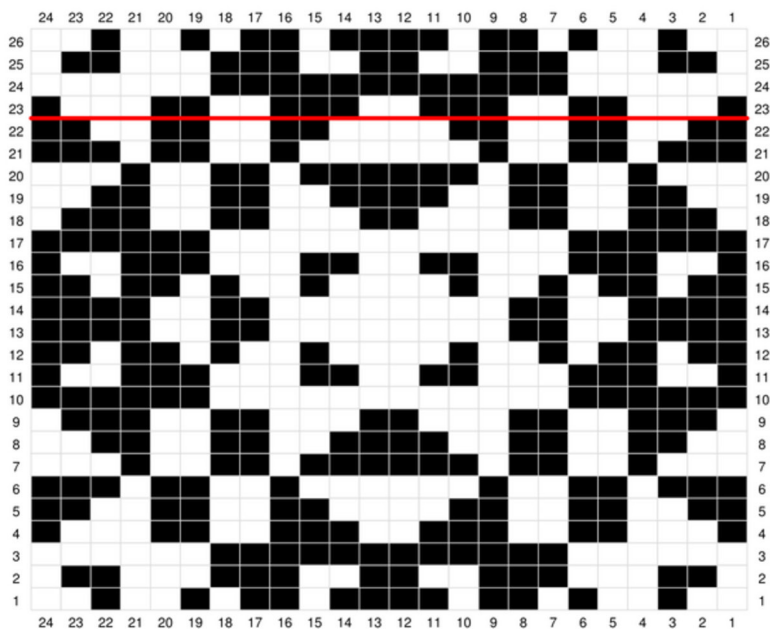


When blocking, you'll see a row of tighter stitches from where you folded the brim, this is where you'd fold up the brim.



Brim

Newborn



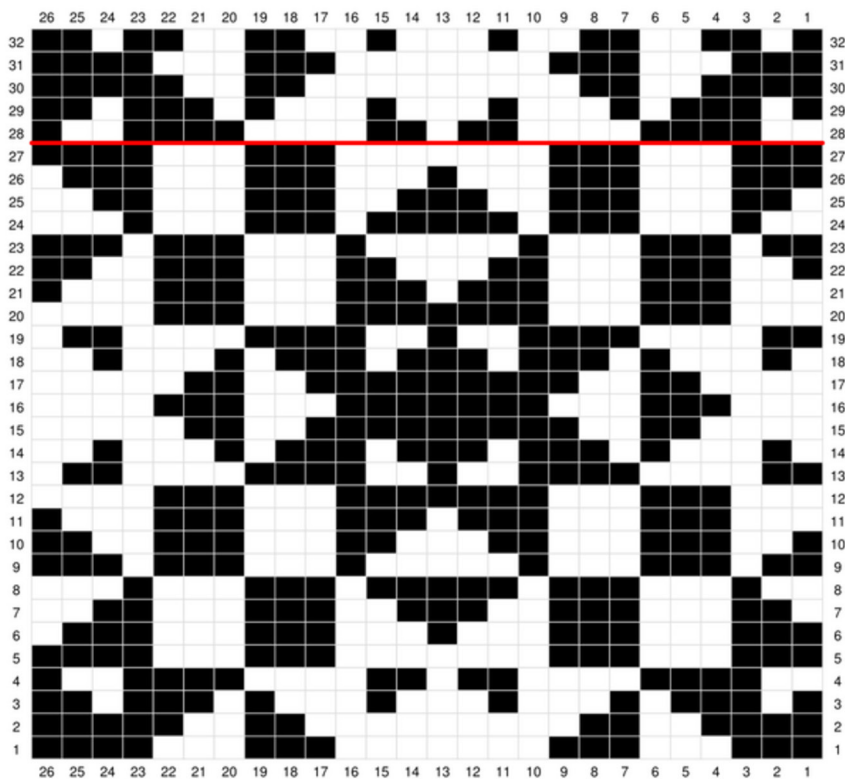
Key

MC

CC

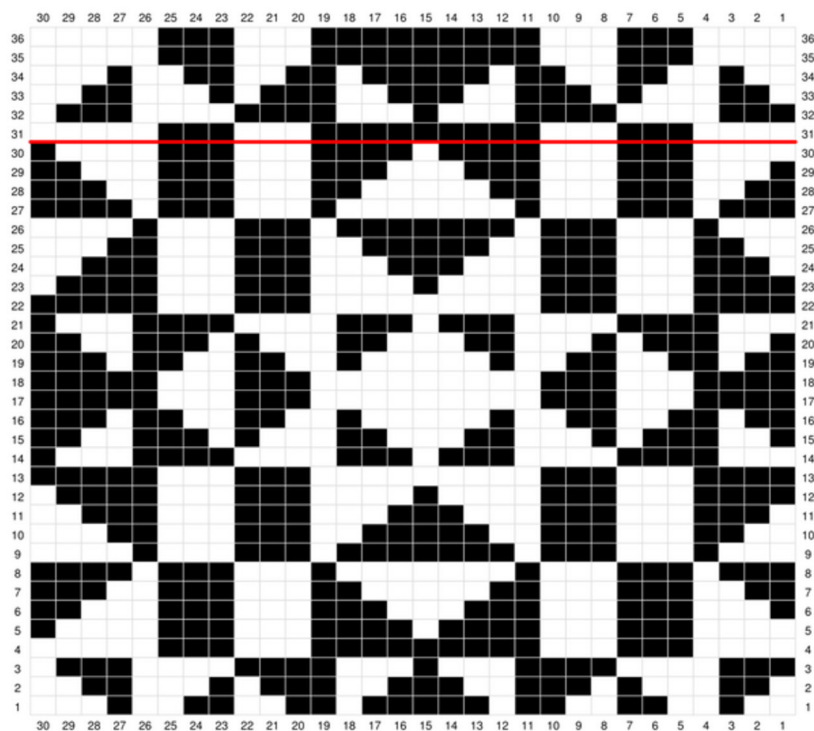
Work Folded Brim Technique
described on Page 3

Toddler



Brim

Child



Key



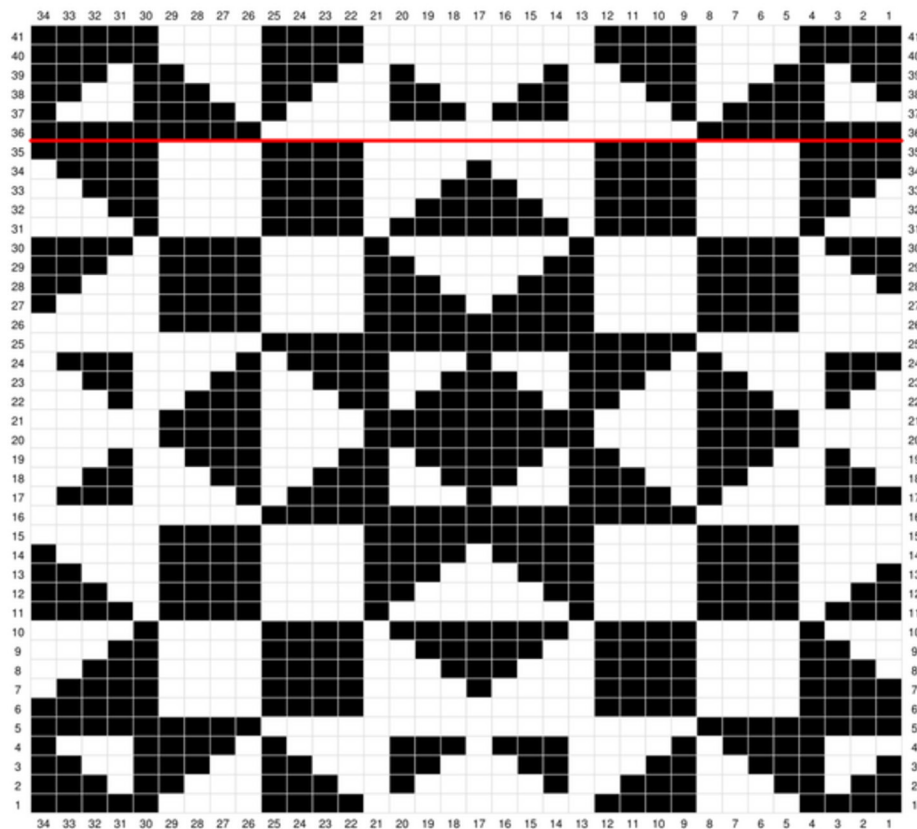
MC



CC

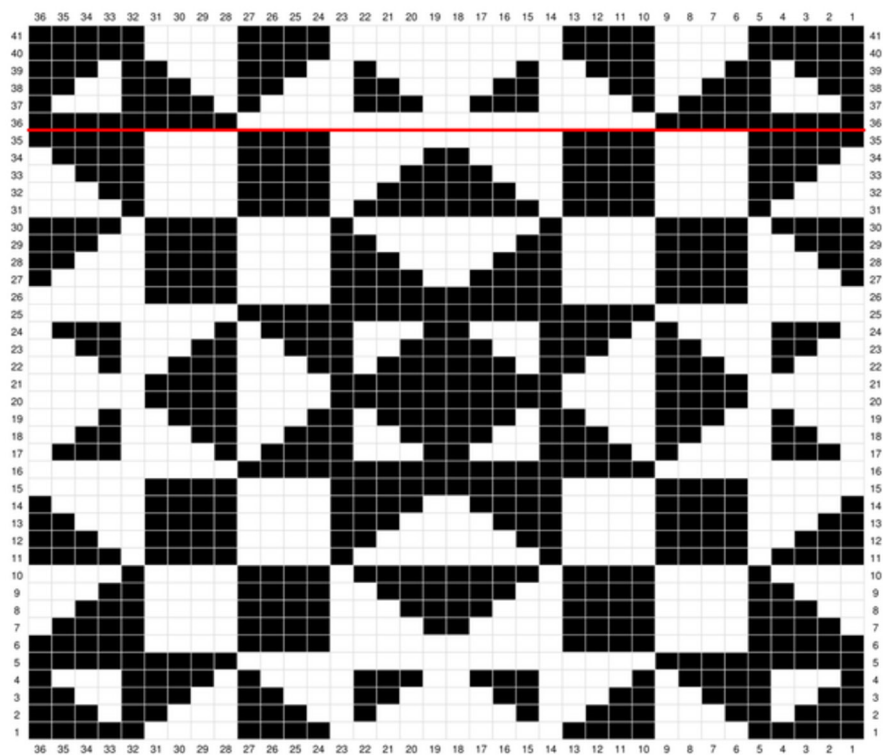
 Work Folded Brim Technique
described on Page 3

Youth



Brim

Adult Small



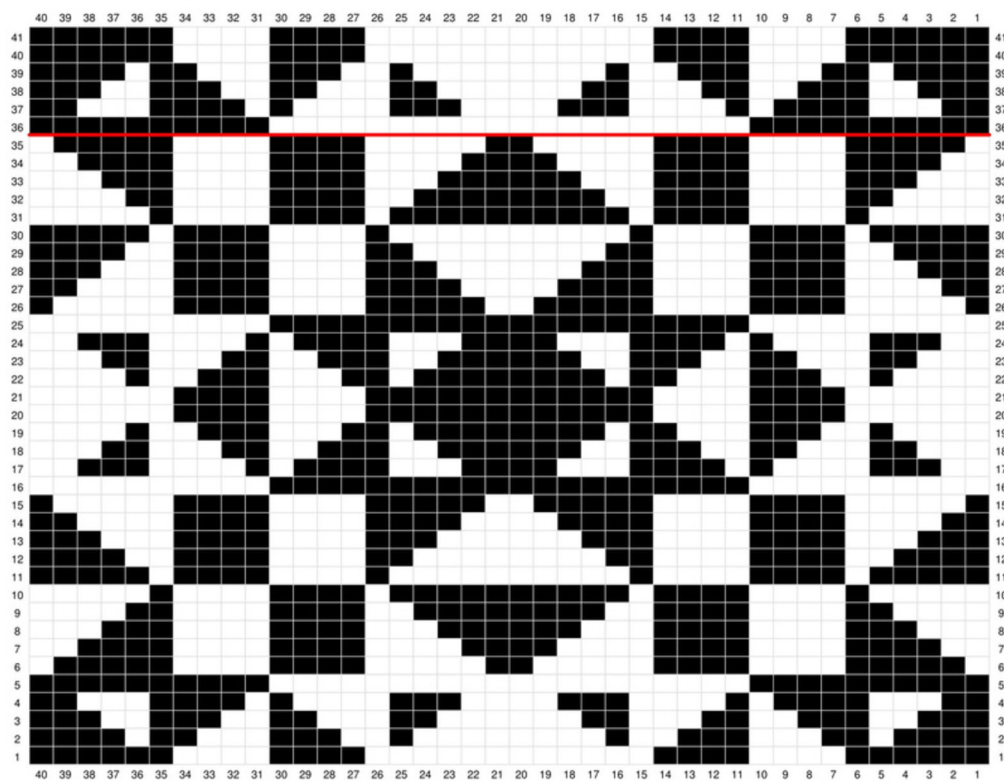
Key

MC

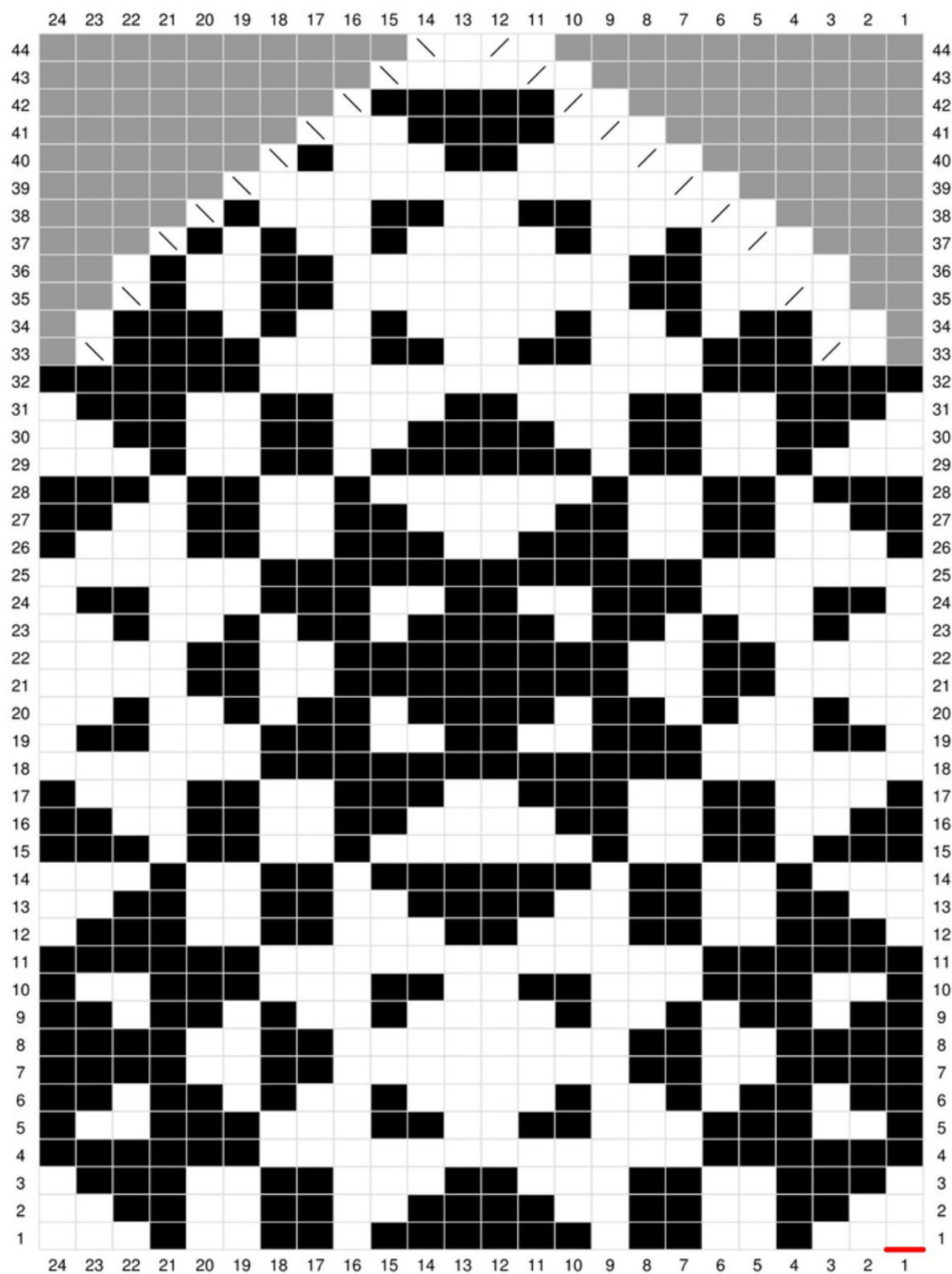
CC

Work Folded Brim Technique
described on Page 3

Adult Large



Newborn Body and Crown



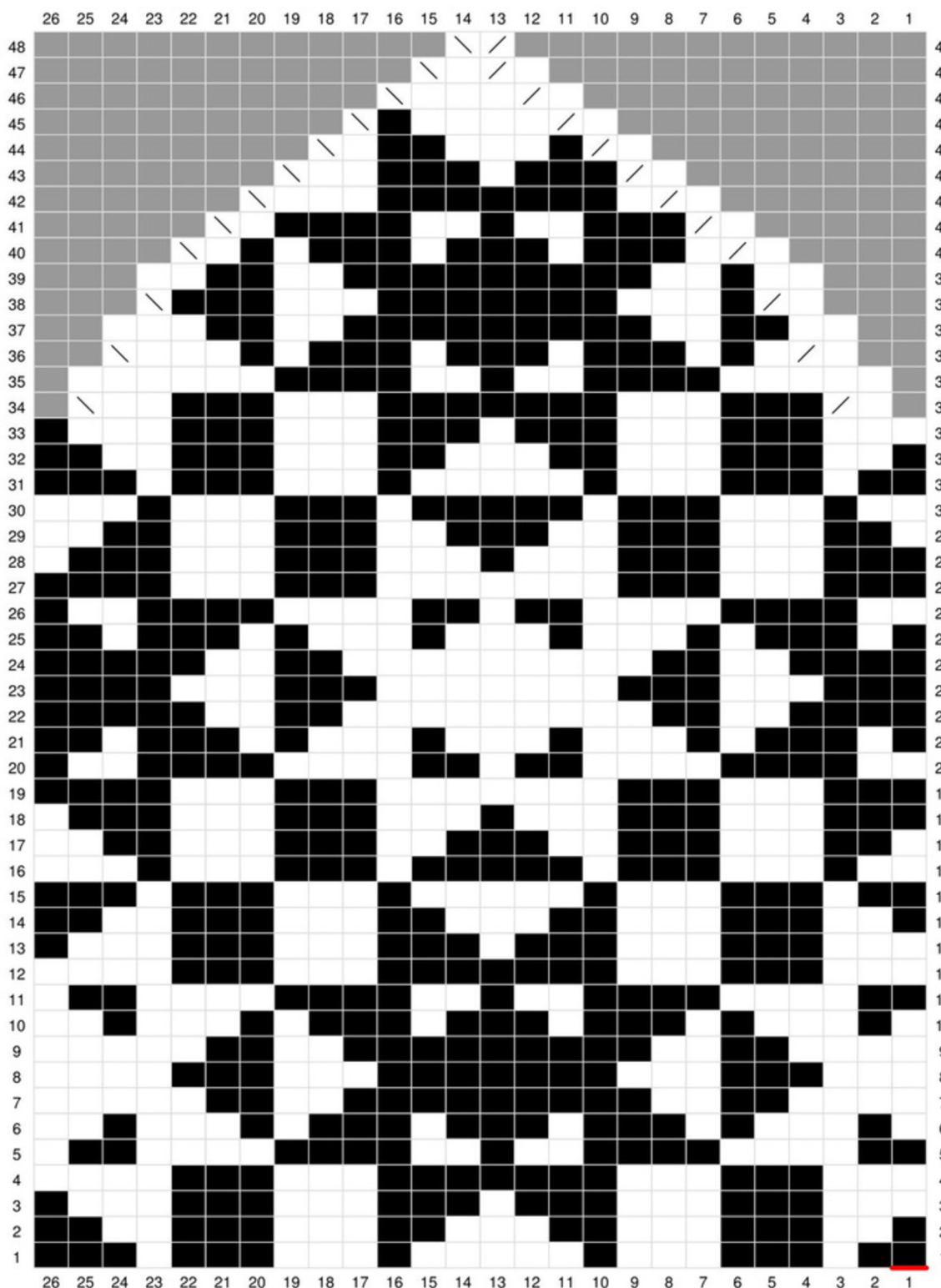
Key

- MC
- CC
- No Stitch
- k2tog
- ssk

Complete one DS to turn your work and start knitting in the opposite direction. This is important to have colorwork facing outside in the end on brim and body, so trust the process!

Knit the DS when you approach it after Row 1 in the chart.

Toddler Body and Crown



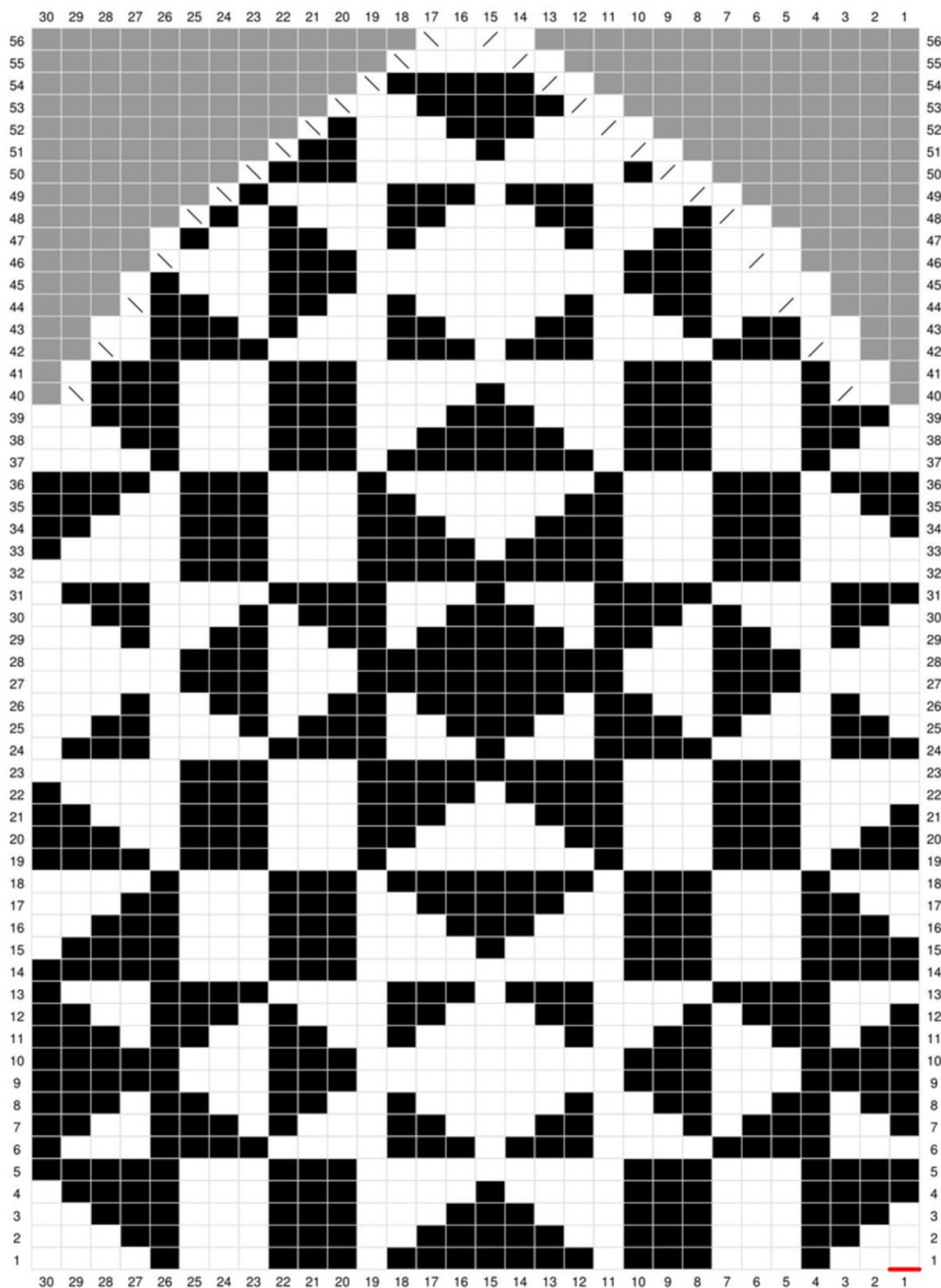
Key

- ☐ MC
- ☒ CC
- ☐ No Stitch
- ☐ k2tog
- ☐ ssk

Complete one DS to turn your work and start knitting in the opposite direction. This is important to have colorwork facing outside in the end on brim and body, so trust the process!

Knit the DS when you approach it after Row 1 in the chart.

Child Body and Crown



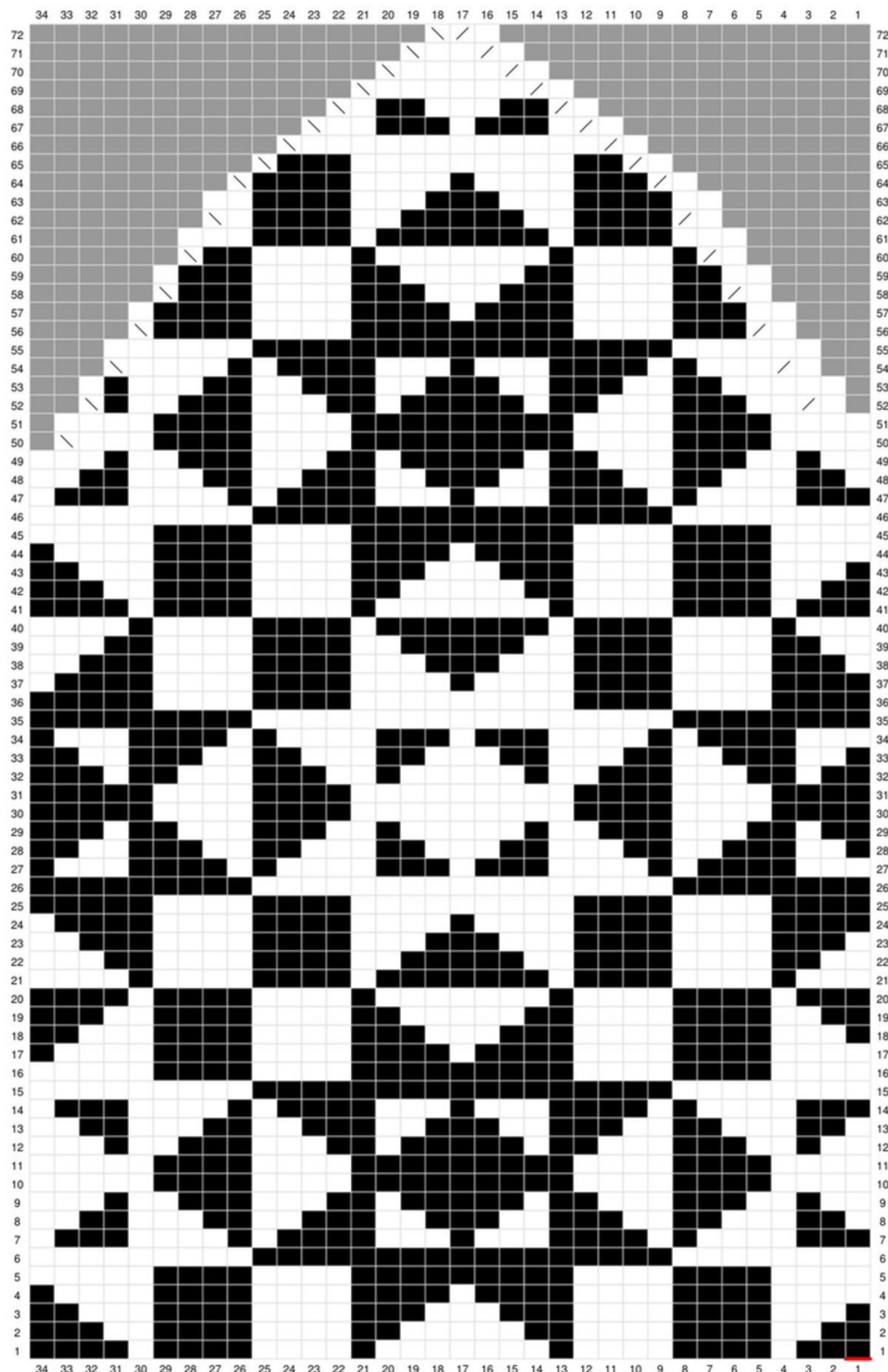
Key

- ☐ MC
- ☒ CC
- ☐ No Stitch
- ☐ k2tog
- ☐ ssk

Complete one DS to turn your work and start knitting in the opposite direction. This is important to have colorwork facing outside in the end on brim and body, so trust the process!

Knit the DS when you approach it after Row 1 in the chart.

Youth Body and Crown



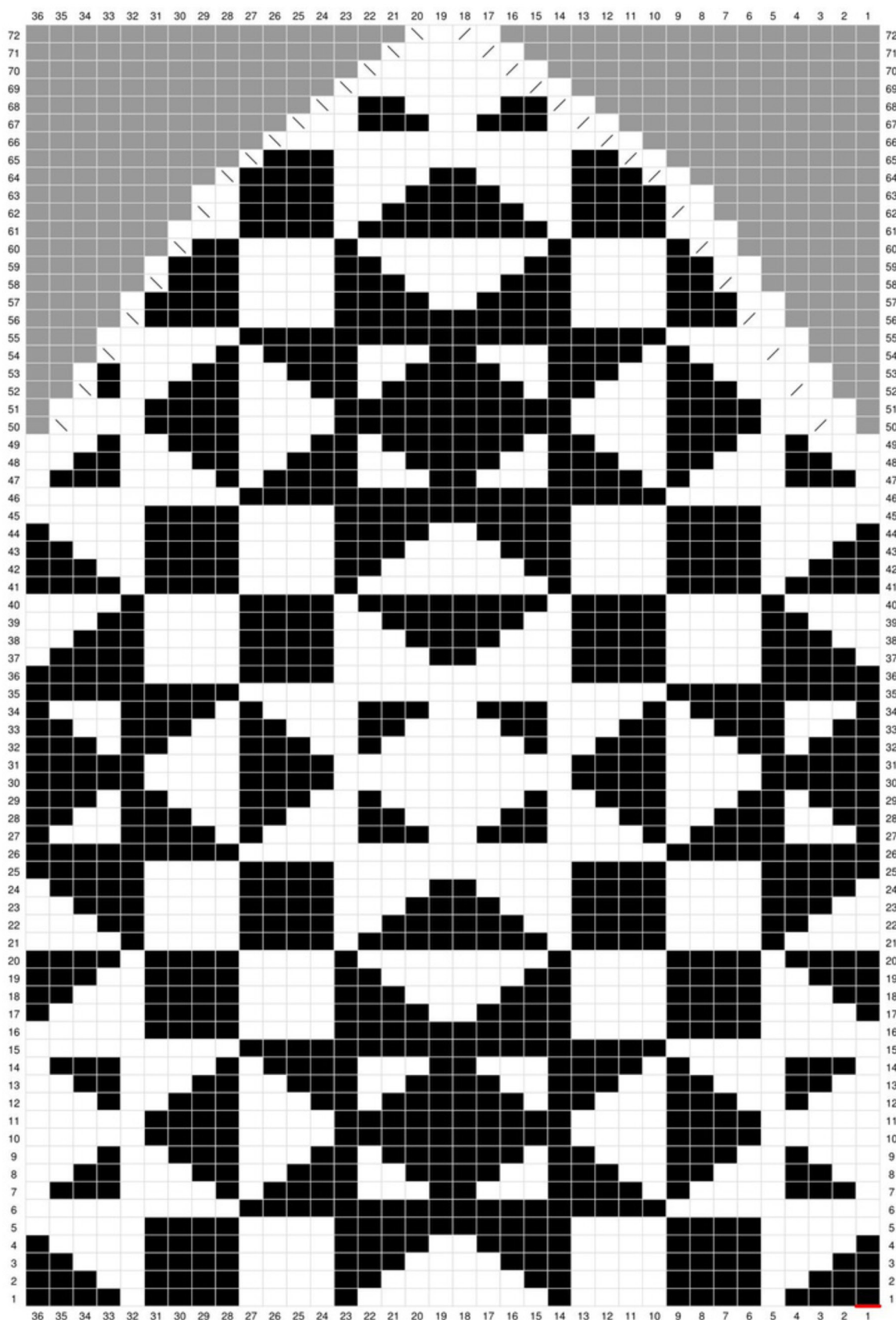
Key

- ☐ MC
- ☒ CC
- ☐ No Stitch
- ☒ k2tog
- ☒ ssk

Complete one DS to turn your work and start knitting in the opposite direction. This is important to have colorwork facing outside in the end on brim and body, so trust the process!

Knit the DS when you approach it after Row 1 in the chart.

Adult Small Body and Crown



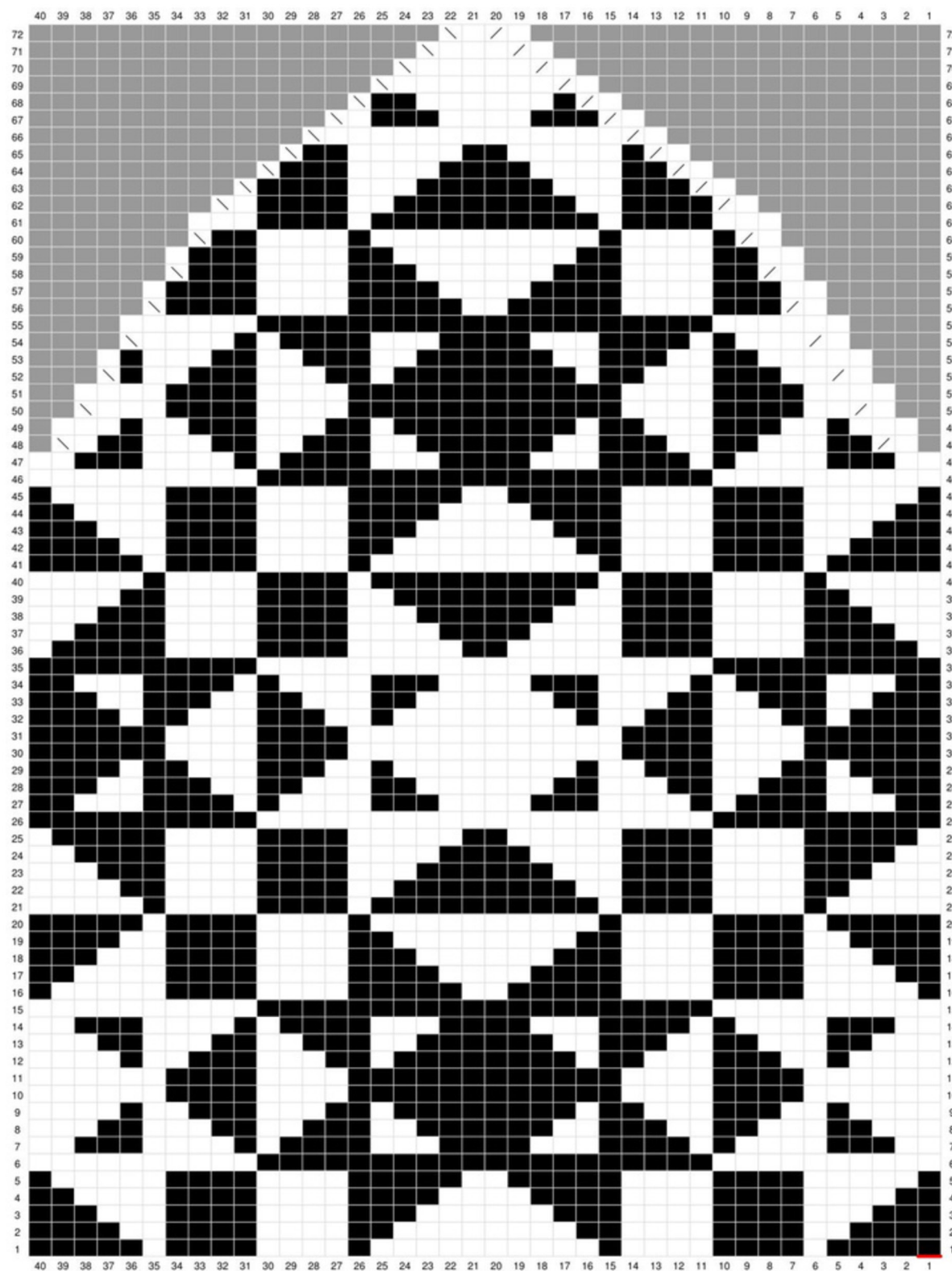
Key

- ☐ MC
- ☒ CC
- ☐ No Stitch
- ☐ k2tog
- ☐ ssk

Complete one DS to turn your work and start knitting in the opposite direction. This is important to have colorwork facing outside in the end on brim and body, so trust the process!

Knit the DS when you approach it after Row 1 in the chart.

Adult Large Body and Crown



Key

- ☐ MC
- ☒ CC
- ☐ No Stitch
- ☐ k2tog
- ☐ ssk

Complete one DS to turn your work and start knitting in the opposite direction. This is important to have colorwork facing outside in the end on brim and body, so trust the process!

Knit the DS when you approach it after Row 1 in the chart.

Congratulations on your beautiful new hat!

If you post photos of your finished project, please tag me @KatrynSeeburger or use #AmblerQuiltHat.
I would love to see your project!

Thank you to Kylen (@yarn_over_everything) for her Tech Editing services and valuable expertise shared through the writing process. You have been incredible to work with!

Special thanks to the testers for their wonderful creativity and feedback, to you for choosing this pattern and for your encouragement over the last few years.
I can't wait to see what we make next together :)

